



Full wwPDB X-ray Structure Validation Report ⓘ

Feb 1, 2016 – 04:48 AM GMT

PDB ID : 2OB3
Title : Structure of Phosphotriesterase mutant H257Y/L303T
Authors : Kim, J.; Ramagopal, U.A.; Tsai, P.; Raushel, F.M.; Almo, S.C.
Deposited on : 2006-12-18
Resolution : 1.04 Å(reported)

This is a Full wwPDB X-ray Structure Validation Report for a publicly released PDB entry.
We welcome your comments at validation@mail.wwpdb.org
A user guide is available at
<http://wwpdb.org/validation/2016/XrayValidationReportHelp>
with specific help available everywhere you see the ⓘ symbol.

The following versions of software and data (see [references ⓘ](#)) were used in the production of this report:

MolProbity : 4.02b-467
Mogul : 1.7 (RC4), CSD as536be (2015)
Xtriage (Phenix) : 1.9-1692
EDS : rb-20026688
Percentile statistics : 20151230.v01 (using entries in the PDB archive December 30th 2015)
Refmac : 5.8.0135
CCP4 : 6.5.0
Ideal geometry (proteins) : Engh & Huber (2001)
Ideal geometry (DNA, RNA) : Parkinson et al. (1996)
Validation Pipeline (wwPDB-VP) : trunk26865

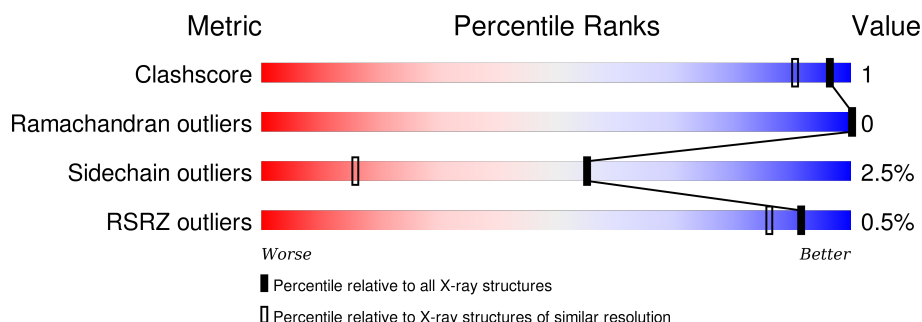
1 Overall quality at a glance

The following experimental techniques were used to determine the structure:

X-RAY DIFFRACTION

The reported resolution of this entry is 1.04 Å.

Percentile scores (ranging between 0-100) for global validation metrics of the entry are shown in the following graphic. The table shows the number of entries on which the scores are based.



Metric	Whole archive (#Entries)	Similar resolution (#Entries, resolution range(Å))
Clashscore	102246	1109 (1.10-0.98)
Ramachandran outliers	100387	1041 (1.10-0.98)
Sidechain outliers	100360	1039 (1.10-0.98)
RSRZ outliers	91569	1034 (1.10-0.98)

The table below summarises the geometric issues observed across the polymeric chains and their fit to the electron density. The red, orange, yellow and green segments on the lower bar indicate the fraction of residues that contain outliers for ≥ 3 , 2, 1 and 0 types of geometric quality criteria. A grey segment represents the fraction of residues that are not modelled. The numeric value for each fraction is indicated below the corresponding segment, with a dot representing fractions $\leq 5\%$. The upper red bar (where present) indicates the fraction of residues that have poor fit to the electron density. The numeric value is given above the bar.

Mol	Chain	Length	Quality of chain
1	A	330	 92% 6% •
1	B	330	 90% 9% •

2 Entry composition

There are 4 unique types of molecules in this entry. The entry contains 6065 atoms, of which 0 are hydrogens and 0 are deuteriums.

In the tables below, the ZeroOcc column contains the number of atoms modelled with zero occupancy, the AltConf column contains the number of residues with at least one atom in alternate conformation and the Trace column contains the number of residues modelled with at most 2 atoms.

- Molecule 1 is a protein called Parathion hydrolase.

Mol	Chain	Residues	Atoms					ZeroOcc	AltConf	Trace
1	A	330	Total	C	N	O	S	0	11	0
			2615	1652	464	492	7			
1	B	330	Total	C	N	O	S	0	4	0
			2563	1618	454	484	7			

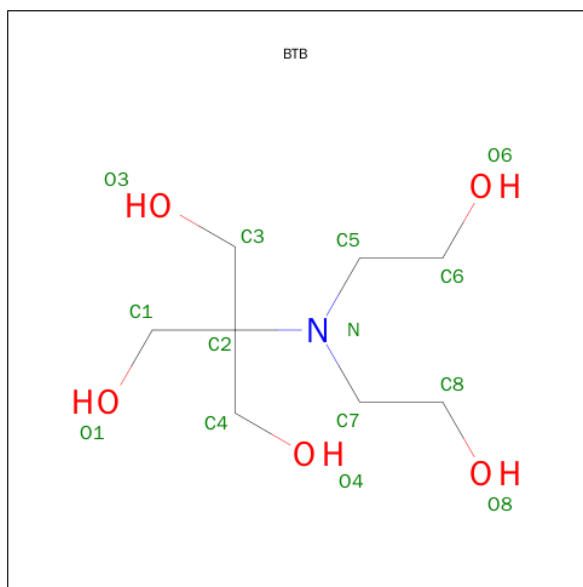
There are 4 discrepancies between the modelled and reference sequences:

Chain	Residue	Modelled	Actual	Comment	Reference
A	257	TYR	HIS	ENGINEERED	UNP P0A434
A	303	THR	LEU	ENGINEERED	UNP P0A434
B	257	TYR	HIS	ENGINEERED	UNP P0A434
B	303	THR	LEU	ENGINEERED	UNP P0A434

- Molecule 2 is ZINC ION (three-letter code: ZN) (formula: Zn).

Mol	Chain	Residues	Atoms		ZeroOcc	AltConf
2	B	2	Total	Zn	0	0
			2	2		
2	A	2	Total	Zn	0	0
			2	2		

- Molecule 3 is 2-[BIS-(2-HYDROXY-ETHYL)-AMINO]-2-HYDROXYMETHYL-PROPAN E-1,3-DIOL (three-letter code: BTB) (formula: C₈H₁₉NO₅).



Mol	Chain	Residues	Atoms				ZeroOcc	AltConf
3	B	1	Total	C	N	O	0	0
			14	8	1	5		
3	A	1	Total	C	N	O	0	0
			14	8	1	5		

- Molecule 4 is water.

Mol	Chain	Residues	Atoms		ZeroOcc	AltConf
4	A	423	Total	O	0	0
			423	423		
4	B	432	Total	O	0	0
			432	432		

3 Residue-property plots [i](#)


These plots are drawn for all protein, RNA and DNA chains in the entry. The first graphic for a chain summarises the proportions of errors displayed in the second graphic. The second graphic shows the sequence view annotated by issues in geometry and electron density. Residues are color-coded according to the number of geometric quality criteria for which they contain at least one outlier: green = 0, yellow = 1, orange = 2 and red = 3 or more. A red dot above a residue indicates a poor fit to the electron density ($RSRZ > 2$). Stretches of 2 or more consecutive residues without any outlier are shown as a green connector. Residues present in the sample, but not in the model, are shown in grey.

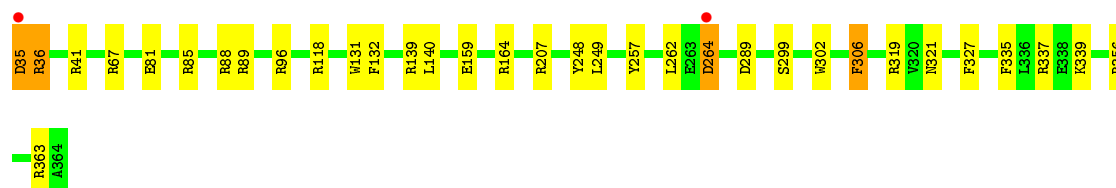
- Molecule 1: Parathion hydrolase

Chain A:  92% 6% .



- Molecule 1: Parathion hydrolase

Chain B:  90% 9% .



4 Data and refinement statistics

Property	Value	Source
Space group	P 1	Depositor
Cell constants a, b, c, α , β , γ	43.36 Å 45.37 Å 79.21 Å 104.86° 93.27° 97.81°	Depositor
Resolution (Å)	30.00 – 1.04 29.91 – 1.04	Depositor EDS
% Data completeness (in resolution range)	95.0 (30.00-1.04) 76.5 (29.91-1.04)	Depositor EDS
R_{merge}	0.06	Depositor
R_{sym}	0.06	Depositor
$\langle I/\sigma(I) \rangle$ ¹	6.25 (at 1.04 Å)	Xtriage
Refinement program	SHELXH	Depositor
R, R_{free}	0.105 , 0.127 0.114 , (Not available)	Depositor DCC
R_{free} test set	No test flags present.	DCC
Wilson B-factor (Å ²)	6.1	Xtriage
Anisotropy	0.260	Xtriage
Bulk solvent k_{sol} (e/Å ³), B_{sol} (Å ²)	0.37 , 49.9	EDS
Estimated twinning fraction	No twinning to report.	Xtriage
L-test for twinning ²	$\langle L \rangle = 0.50$, $\langle L^2 \rangle = 0.33$	Xtriage
Outliers	0 of 224066 reflections	Xtriage
F_o, F_c correlation	0.98	EDS
Total number of atoms	6065	wwPDB-VP
Average B, all atoms (Å ²)	9.0	wwPDB-VP

Xtriage's analysis on translational NCS is as follows: *The largest off-origin peak in the Patterson function is 6.76% of the height of the origin peak. No significant pseudotranslation is detected.*

¹Intensities estimated from amplitudes.

²Theoretical values of $\langle |L| \rangle$, $\langle L^2 \rangle$ for acentric reflections are 0.5, 0.375 respectively for untwinned datasets, and 0.333, 0.2 for perfectly twinned datasets.

5 Model quality [i](#)

5.1 Standard geometry [i](#)

Bond lengths and bond angles in the following residue types are not validated in this section: ZN, KCX, BTB

The Z score for a bond length (or angle) is the number of standard deviations the observed value is removed from the expected value. A bond length (or angle) with $|Z| > 5$ is considered an outlier worth inspection. RMSZ is the root-mean-square of all Z scores of the bond lengths (or angles).

Mol	Chain	Bond lengths		Bond angles	
		RMSZ	$\# Z > 5$	RMSZ	$\# Z > 5$
1	A	0.76	2/2651 (0.1%)	1.32	30/3600 (0.8%)
1	B	0.75	0/2598	1.29	34/3527 (1.0%)
All	All	0.76	2/5249 (0.0%)	1.31	64/7127 (0.9%)

All (2) bond length outliers are listed below:

Mol	Chain	Res	Type	Atoms	Z	Observed(Å)	Ideal(Å)
1	A	364	ALA	C-OXT	5.88	1.34	1.23
1	A	356	ARG	CD-NE	-5.13	1.37	1.46

All (64) bond angle outliers are listed below:

Mol	Chain	Res	Type	Atoms	Z	Observed(°)	Ideal(°)
1	A	88	ARG	NE-CZ-NH1	15.37	127.98	120.30
1	A	356	ARG	NE-CZ-NH2	13.78	127.19	120.30
1	A	356	ARG	NE-CZ-NH1	-13.67	113.46	120.30
1	B	118	ARG	NE-CZ-NH2	13.19	126.90	120.30
1	B	139	ARG	CG-CD-NE	13.08	139.26	111.80
1	A	89[A]	ARG	NE-CZ-NH2	12.51	126.55	120.30
1	A	89[B]	ARG	NE-CZ-NH2	12.51	126.55	120.30
1	A	118	ARG	NE-CZ-NH2	-11.51	114.54	120.30
1	A	118	ARG	NE-CZ-NH1	11.39	125.99	120.30
1	B	356	ARG	NE-CZ-NH2	-11.33	114.63	120.30
1	B	139	ARG	NE-CZ-NH1	11.18	125.89	120.30
1	B	140	LEU	CD1-CG-CD2	10.54	142.12	110.50
1	B	264	ASP	CB-CG-OD2	-10.07	109.23	118.30
1	A	264	ASP	CB-CG-OD2	9.25	126.62	118.30
1	A	337	ARG	NE-CZ-NH2	-8.95	115.83	120.30
1	A	41	ARG	NE-CZ-NH1	-8.80	115.90	120.30
1	A	356	ARG	CD-NE-CZ	8.75	135.85	123.60

Continued on next page...

Continued from previous page...

Mol	Chain	Res	Type	Atoms	Z	Observed(°)	Ideal(°)
1	A	337	ARG	CD-NE-CZ	7.97	134.75	123.60
1	B	41	ARG	NE-CZ-NH1	-7.65	116.48	120.30
1	B	89	ARG	NE-CZ-NH2	-7.21	116.69	120.30
1	A	139	ARG	CA-CB-CG	7.19	129.22	113.40
1	B	67	ARG	NE-CZ-NH2	7.12	123.86	120.30
1	B	132	PHE	CB-CG-CD2	7.05	125.73	120.80
1	B	36	ARG	NE-CZ-NH2	-6.97	116.81	120.30
1	A	139	ARG	NE-CZ-NH1	6.95	123.78	120.30
1	B	159	GLU	OE1-CD-OE2	-6.95	114.96	123.30
1	A	41	ARG	NE-CZ-NH2	6.68	123.64	120.30
1	A	51	PHE	CB-CG-CD1	6.66	125.47	120.80
1	A	164	ARG	CD-NE-CZ	6.53	132.74	123.60
1	B	264	ASP	OD1-CG-OD2	6.50	135.65	123.30
1	A	89[A]	ARG	CB-CG-CD	6.47	128.42	111.60
1	A	89[B]	ARG	CB-CG-CD	6.47	128.42	111.60
1	B	36	ARG	NE-CZ-NH1	6.40	123.50	120.30
1	B	356	ARG	CD-NE-CZ	6.39	132.55	123.60
1	A	131	TRP	CA-CB-CG	6.38	125.81	113.70
1	B	131	TRP	CA-CB-CG	6.38	125.81	113.70
1	B	41	ARG	NE-CZ-NH2	6.36	123.48	120.30
1	B	207	ARG	CD-NE-CZ	6.26	132.37	123.60
1	B	85	ARG	NE-CZ-NH2	6.22	123.41	120.30
1	B	164	ARG	NE-CZ-NH1	-6.22	117.19	120.30
1	B	257	TYR	CB-CG-CD1	6.01	124.60	121.00
1	B	249	LEU	CD1-CG-CD2	5.93	128.31	110.50
1	B	306	PHE	CB-CG-CD1	5.93	124.95	120.80
1	B	363	ARG	NE-CZ-NH1	-5.93	117.34	120.30
1	B	249	LEU	CA-CB-CG	-5.78	102.01	115.30
1	B	337	ARG	CG-CD-NE	-5.72	99.78	111.80
1	A	195	GLY	C-N-CA	5.71	135.97	121.70
1	B	327	PHE	CB-CG-CD2	-5.52	116.94	120.80
1	B	88	ARG	CD-NE-CZ	5.46	131.25	123.60
1	A	152	ARG	CD-NE-CZ	5.44	131.22	123.60
1	A	225	ARG	NE-CZ-NH2	-5.40	117.60	120.30
1	A	306	PHE	CB-CG-CD1	5.38	124.57	120.80
1	B	118	ARG	NE-CZ-NH1	-5.37	117.61	120.30
1	B	356	ARG	NH1-CZ-NH2	5.25	125.17	119.40
1	A	132[A]	PHE	CB-CA-C	5.21	120.82	110.40
1	A	132[B]	PHE	CB-CA-C	5.21	120.82	110.40
1	B	140	LEU	CA-CB-CG	-5.20	103.34	115.30
1	A	89[A]	ARG	CD-NE-CZ	5.19	130.87	123.60
1	A	89[B]	ARG	CD-NE-CZ	5.19	130.87	123.60

Continued on next page...

Continued from previous page...

Mol	Chain	Res	Type	Atoms	Z	Observed(^o)	Ideal(^o)
1	B	289	ASP	CB-CG-OD1	5.12	122.91	118.30
1	B	248	TYR	CB-CG-CD1	-5.12	117.93	121.00
1	A	88	ARG	NH1-CZ-NH2	-5.10	113.79	119.40
1	A	118	ARG	CD-NE-CZ	5.08	130.72	123.60
1	B	96	ARG	NE-CZ-NH1	5.05	122.83	120.30

There are no chirality outliers.

There are no planarity outliers.

5.2 Too-close contacts ⓘ

In the following table, the Non-H and H(model) columns list the number of non-hydrogen atoms and hydrogen atoms in the chain respectively. The H(added) column lists the number of hydrogen atoms added and optimized by MolProbity. The Clashes column lists the number of clashes within the asymmetric unit, whereas Symm-Clashes lists symmetry related clashes.

Mol	Chain	Non-H	H(model)	H(added)	Clashes	Symm-Clashes
1	A	2615	0	2622	11	0
1	B	2563	0	2573	4	0
2	A	2	0	0	0	0
2	B	2	0	0	0	0
3	A	14	0	19	0	0
3	B	14	0	18	0	0
4	A	423	0	0	8	0
4	B	432	0	0	1	0
All	All	6065	0	5232	15	0

The all-atom clashscore is defined as the number of clashes found per 1000 atoms (including hydrogen atoms). The all-atom clashscore for this structure is 1.

All (15) close contacts within the same asymmetric unit are listed below, sorted by their clash magnitude.

Atom-1	Atom-2	Interatomic distance (Å)	Clash overlap (Å)
1:A:35:ASP:HA	4:A:1190:HOH:O	1.92	0.69
1:A:338:GLU:HG3	4:A:1280:HOH:O	2.04	0.56
1:A:89[A]:ARG:NH1	4:A:1093:HOH:O	2.49	0.46
1:A:115:GLU:HG2	4:A:1132:HOH:O	2.15	0.46
1:A:88:ARG:NH2	4:A:1252:HOH:O	2.49	0.45
1:B:335:PHE:CZ	1:B:339:LYS:HE3	2.52	0.44
1:A:302:TRP:CH2	1:A:321:ASN:HB3	2.51	0.44

Continued on next page...

Continued from previous page...

Atom-1	Atom-2	Interatomic distance (Å)	Clash overlap (Å)
1:A:89[B]:ARG:NH2	4:A:1092:HOH:O	2.49	0.44
1:B:35:ASP:OD1	1:B:36:ARG:NH1	2.50	0.44
1:A:164:ARG:NH2	4:A:1310:HOH:O	2.50	0.43
1:B:81:GLU:HG3	4:B:1070:HOH:O	2.18	0.43
1:A:139:ARG:HA	1:A:179:PHE:CE1	2.53	0.43
1:B:302:TRP:CH2	1:B:321:ASN:HB3	2.54	0.43
1:A:298[B]:VAL:CG1	1:A:328:ILE:HD12	2.50	0.42
1:A:88:ARG:NH1	4:A:1150:HOH:O	2.49	0.40

There are no symmetry-related clashes.

5.3 Torsion angles [i](#)

5.3.1 Protein backbone [i](#)

In the following table, the Percentiles column shows the percent Ramachandran outliers of the chain as a percentile score with respect to all X-ray entries followed by that with respect to entries of similar resolution.

The Analysed column shows the number of residues for which the backbone conformation was analysed, and the total number of residues.

Mol	Chain	Analysed	Favoured	Allowed	Outliers	Percentiles	
1	A	339/330 (103%)	330 (97%)	9 (3%)	0	100	100
1	B	333/330 (101%)	323 (97%)	10 (3%)	0	100	100
All	All	672/660 (102%)	653 (97%)	19 (3%)	0	100	100

There are no Ramachandran outliers to report.

5.3.2 Protein sidechains [i](#)

In the following table, the Percentiles column shows the percent sidechain outliers of the chain as a percentile score with respect to all X-ray entries followed by that with respect to entries of similar resolution.

The Analysed column shows the number of residues for which the sidechain conformation was analysed, and the total number of residues.

Mol	Chain	Analysed	Rotameric	Outliers	Percentiles	
1	A	276/264 (104%)	267 (97%)	9 (3%)	45	9

Continued on next page...

Continued from previous page...

Mol	Chain	Analysed	Rotameric	Outliers	Percentiles	
1	B	270/264 (102%)	264 (98%)	6 (2%)	60	20
All	All	546/528 (103%)	531 (97%)	15 (3%)	55	14

All (15) residues with a non-rotameric sidechain are listed below:

Mol	Chain	Res	Type
1	A	35	ASP
1	A	51	PHE
1	A	89[A]	ARG
1	A	89[B]	ARG
1	A	262	LEU
1	A	299[A]	SER
1	A	299[B]	SER
1	A	306	PHE
1	A	319	ARG
1	B	35	ASP
1	B	262	LEU
1	B	264	ASP
1	B	299	SER
1	B	306	PHE
1	B	319	ARG

Some sidechains can be flipped to improve hydrogen bonding and reduce clashes. All (1) such sidechains are listed below:

Mol	Chain	Res	Type
1	B	206	GLN

5.3.3 RNA ⓘ

There are no RNA molecules in this entry.

5.4 Non-standard residues in protein, DNA, RNA chains ⓘ

2 non-standard protein/DNA/RNA residues are modelled in this entry.

In the following table, the Counts columns list the number of bonds (or angles) for which Mogul statistics could be retrieved, the number of bonds (or angles) that are observed in the model and the number of bonds (or angles) that are defined in the chemical component dictionary. The Link column lists molecule types, if any, to which the group is linked. The Z score for a bond length (or angle) is the number of standard deviations the observed value is removed from the expected

value. A bond length (or angle) with $|Z| > 2$ is considered an outlier worth inspection. RMSZ is the root-mean-square of all Z scores of the bond lengths (or angles).

Mol	Type	Chain	Res	Link	Bond lengths			Bond angles		
					Counts	RMSZ	$\# Z > 2$	Counts	RMSZ	$\# Z > 2$
1	KCX	A	169	1,2	7,11,12	2.42	1 (14%)	7,12,14	0.72	0
1	KCX	B	169	1,2	7,11,12	1.10	0	7,12,14	0.95	0

In the following table, the Chirals column lists the number of chiral outliers, the number of chiral centers analysed, the number of these observed in the model and the number defined in the chemical component dictionary. Similar counts are reported in the Torsion and Rings columns. '-' means no outliers of that kind were identified.

Mol	Type	Chain	Res	Link	Chirals	Torsions	Rings
1	KCX	A	169	1,2	-	0/6/10/12	0/0/0/0
1	KCX	B	169	1,2	-	0/6/10/12	0/0/0/0

All (1) bond length outliers are listed below:

Mol	Chain	Res	Type	Atoms	Z	Observed(Å)	Ideal(Å)
1	A	169	KCX	CB-CA	6.25	1.59	1.53

There are no bond angle outliers.

There are no chirality outliers.

There are no torsion outliers.

There are no ring outliers.

No monomer is involved in short contacts.

5.5 Carbohydrates [i](#)

There are no carbohydrates in this entry.

5.6 Ligand geometry [i](#)

Of 6 ligands modelled in this entry, 4 are monoatomic - leaving 2 for Mogul analysis.

In the following table, the Counts columns list the number of bonds (or angles) for which Mogul statistics could be retrieved, the number of bonds (or angles) that are observed in the model and the number of bonds (or angles) that are defined in the chemical component dictionary. The Link column lists molecule types, if any, to which the group is linked. The Z score for a bond length (or angle) is the number of standard deviations the observed value is removed from the expected

value. A bond length (or angle) with $|Z| > 2$ is considered an outlier worth inspection. RMSZ is the root-mean-square of all Z scores of the bond lengths (or angles).

Mol	Type	Chain	Res	Link	Bond lengths			Bond angles		
					Counts	RMSZ	$\# Z > 2$	Counts	RMSZ	$\# Z > 2$
3	BTB	A	906	-	12,13,13	2.93	3 (25%)	8,16,16	1.53	2 (25%)
3	BTB	B	905	-	12,13,13	2.15	1 (8%)	8,16,16	1.00	0

In the following table, the Chirals column lists the number of chiral outliers, the number of chiral centers analysed, the number of these observed in the model and the number defined in the chemical component dictionary. Similar counts are reported in the Torsion and Rings columns. '-' means no outliers of that kind were identified.

Mol	Type	Chain	Res	Link	Chirals	Torsions	Rings
3	BTB	A	906	-	-	0/21/21/21	0/0/0/0
3	BTB	B	905	-	-	0/21/21/21	0/0/0/0

All (4) bond length outliers are listed below:

Mol	Chain	Res	Type	Atoms	Z	Observed(Å)	Ideal(Å)
3	A	906	BTB	C4-C2	-2.77	1.49	1.53
3	A	906	BTB	C5-N	3.71	1.53	1.48
3	B	905	BTB	C7-N	6.45	1.57	1.48
3	A	906	BTB	C3-C2	8.65	1.64	1.53

All (2) bond angle outliers are listed below:

Mol	Chain	Res	Type	Atoms	Z	Observed(°)	Ideal(°)
3	A	906	BTB	O3-C3-C2	-2.59	104.88	111.12
3	A	906	BTB	C7-N-C2	2.29	120.47	113.86

There are no chirality outliers.

There are no torsion outliers.

There are no ring outliers.

No monomer is involved in short contacts.

5.7 Other polymers ⓘ

There are no such residues in this entry.

5.8 Polymer linkage issues ⓘ

There are no chain breaks in this entry.

6 Fit of model and data [i](#)

6.1 Protein, DNA and RNA chains [i](#)

In the following table, the column labelled ‘#RSRZ> 2’ contains the number (and percentage) of RSRZ outliers, followed by percent RSRZ outliers for the chain as percentile scores relative to all X-ray entries and entries of similar resolution. The OWAB column contains the minimum, median, 95th percentile and maximum values of the occupancy-weighted average B-factor per residue. The column labelled ‘Q< 0.9’ lists the number of (and percentage) of residues with an average occupancy less than 0.9.

Mol	Chain	Analysed	<RSRZ>	#RSRZ>2	OWAB(Å ²)	Q<0.9
1	A	329/330 (99%)	-0.30	1 (0%) 94 88	4, 7, 15, 44	0
1	B	329/330 (99%)	-0.30	2 (0%) 90 84	4, 7, 15, 32	0
All	All	658/660 (99%)	-0.30	3 (0%) 91 86	4, 7, 16, 44	0

All (3) RSRZ outliers are listed below:

Mol	Chain	Res	Type	RSRZ
1	B	35	ASP	4.3
1	A	35	ASP	4.2
1	B	264	ASP	2.3

6.2 Non-standard residues in protein, DNA, RNA chains [i](#)

In the following table, the Atoms column lists the number of modelled atoms in the group and the number defined in the chemical component dictionary. LLDF column lists the quality of electron density of the group with respect to its neighbouring residues in protein, DNA or RNA chains. The B-factors column lists the minimum, median, 95th percentile and maximum values of B factors of atoms in the group. The column labelled ‘Q< 0.9’ lists the number of atoms with occupancy less than 0.9.

Mol	Type	Chain	Res	Atoms	RSCC	RSR	LLDF	B-factors(Å ²)	Q<0.9
1	KCX	A	169	12/13	0.99	0.07	-	4,5,6,7	0
1	KCX	B	169	12/13	0.99	0.08	-	4,5,5,6	0

6.3 Carbohydrates [i](#)

There are no carbohydrates in this entry.

6.4 Ligands [i](#)

In the following table, the Atoms column lists the number of modelled atoms in the group and the number defined in the chemical component dictionary. LLDF column lists the quality of electron density of the group with respect to its neighbouring residues in protein, DNA or RNA chains. The B-factors column lists the minimum, median, 95th percentile and maximum values of B factors of atoms in the group. The column labelled 'Q< 0.9' lists the number of atoms with occupancy less than 0.9.

Mol	Type	Chain	Res	Atoms	RSCC	RSR	LLDF	B-factors(Å ²)	Q<0.9
3	BTB	B	905	14/14	0.98	0.05	-0.00	6,7,10,13	0
3	BTB	A	906	14/14	0.99	0.05	-1.06	6,7,12,14	0
2	ZN	A	902	1/1	1.00	0.03	-2.88	7,7,7,7	0
2	ZN	B	904	1/1	1.00	0.02	-	7,7,7,7	0
2	ZN	B	903	1/1	1.00	0.02	-	4,4,4,4	0
2	ZN	A	901	1/1	1.00	0.02	-	5,5,5,5	0

6.5 Other polymers [i](#)

There are no such residues in this entry.