



Full wwPDB X-ray Structure Validation Report ⓘ

Feb 1, 2016 – 04:49 AM GMT

PDB ID : 2OC8
Title : Structure of Hepatitis C Viral NS3 protease domain complexed with NS4A peptide and ketoamide SCH503034
Authors : Prongay, A.J.; Guo, Z.; Yao, N.; Fischmann, T.; Strickland, C.; Myers, J.; Weber, P.C.; Malcolm, B.; Beyer, B.M.; Ingram, R.; Pichardo, J.; Hong, Z.; Prosise, W.W.; Ramanathan, L.; Taremi, S.S.; Yarosh-Tomaine, T.; Zhang, R.; Senior, M.; Yang, R.S.; Arasappan, A.; Bennett, F.; Bogen, S.L.; Chen, K.; Jao, E.; Liu, Y.T.; Lovey, R.G.; Saksena, A.K.; Venkatraman, S.; Girijavallabhan, V.; Njoroge, F.G.; Madison, V.
Deposited on : 2006-12-20
Resolution : 2.66 Å(reported)

This is a Full wwPDB X-ray Structure Validation Report for a publicly released PDB entry.
We welcome your comments at validation@mail.wwpdb.org
A user guide is available at
<http://wwpdb.org/validation/2016/XrayValidationReportHelp>
with specific help available everywhere you see the ⓘ symbol.

The following versions of software and data (see [references ⓘ](#)) were used in the production of this report:

MolProbity : 4.02b-467
Mogul : 1.7 (RC4), CSD as536be (2015)
Xtriage (Phenix) : 1.9-1692
EDS : rb-20026688
Percentile statistics : 20151230.v01 (using entries in the PDB archive December 30th 2015)
Refmac : 5.8.0135
CCP4 : 6.5.0
Ideal geometry (proteins) : Engh & Huber (2001)
Ideal geometry (DNA, RNA) : Parkinson et al. (1996)
Validation Pipeline (wwPDB-VP) : trunk26865

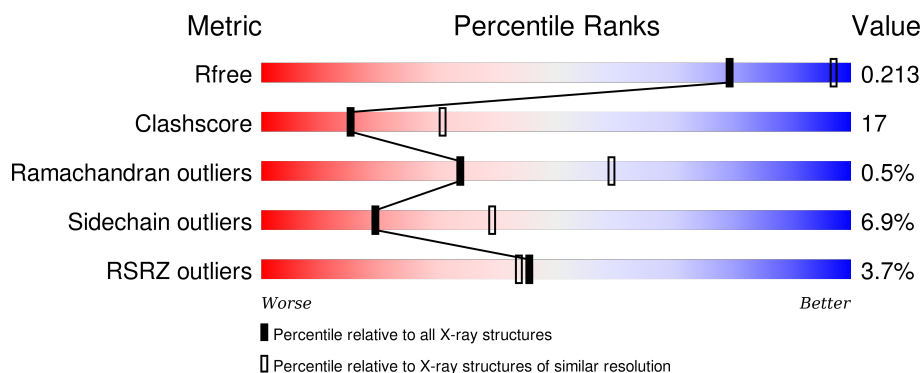
1 Overall quality at a glance

The following experimental techniques were used to determine the structure:

X-RAY DIFFRACTION

The reported resolution of this entry is 2.66 Å.

Percentile scores (ranging between 0-100) for global validation metrics of the entry are shown in the following graphic. The table shows the number of entries on which the scores are based.



Metric	Whole archive (#Entries)	Similar resolution (#Entries, resolution range(Å))
R_{free}	91344	3152 (2.70-2.62)
Clashscore	102246	3524 (2.70-2.62)
Ramachandran outliers	100387	3469 (2.70-2.62)
Sidechain outliers	100360	3469 (2.70-2.62)
RSRZ outliers	91569	3161 (2.70-2.62)

The table below summarises the geometric issues observed across the polymeric chains and their fit to the electron density. The red, orange, yellow and green segments on the lower bar indicate the fraction of residues that contain outliers for ≥ 3 , 2, 1 and 0 types of geometric quality criteria. A grey segment represents the fraction of residues that are not modelled. The numeric value for each fraction is indicated below the corresponding segment, with a dot representing fractions $\leq 5\%$. The upper red bar (where present) indicates the fraction of residues that have poor fit to the electron density. The numeric value is given above the bar.

Mol	Chain	Length	Quality of chain
1	A	200	<div> <div>3%</div> <div>60%</div> <div>29%</div> <div>9%</div> </div>
1	C	200	<div> <div>3%</div> <div>51%</div> <div>22%</div> <div>24%</div> </div>
2	B	23	<div> <div>4%</div> <div>70%</div> <div>26%</div> <div>.</div> </div>
2	D	23	<div> <div>13%</div> <div>35%</div> <div>35%</div> <div>26%</div> <div>.</div> </div>

The following table lists non-polymeric compounds, carbohydrate monomers and non-standard

residues in protein, DNA, RNA chains that are outliers for geometric or electron-density-fit criteria:

Mol	Type	Chain	Res	Chirality	Geometry	Clashes	Electron density
4	BME	A	801	-	-	-	X

2 Entry composition

There are 6 unique types of molecules in this entry. The entry contains 2935 atoms, of which 0 are hydrogens and 0 are deuteriums.

In the tables below, the ZeroOcc column contains the number of atoms modelled with zero occupancy, the AltConf column contains the number of residues with at least one atom in alternate conformation and the Trace column contains the number of residues modelled with at most 2 atoms.

- Molecule 1 is a protein called Hepatitis C virus.

Mol	Chain	Residues	Atoms					ZeroOcc	AltConf	Trace
1	A	183	Total	C	N	O	S	0	0	0
			1353	843	246	254	10			
1	C	152	Total	C	N	O	S	0	0	0
			1125	704	202	211	8			

There are 40 discrepancies between the modelled and reference sequences:

Chain	Residue	Modelled	Actual	Comment	Reference
A	-10	MET	-	CLONING ARTIFACT	UNP Q9ELS8
A	-9	ALA	-	CLONING ARTIFACT	UNP Q9ELS8
A	-8	SER	-	CLONING ARTIFACT	UNP Q9ELS8
A	-7	MET	-	CLONING ARTIFACT	UNP Q9ELS8
A	-6	THR	-	CLONING ARTIFACT	UNP Q9ELS8
A	-5	GLY	-	CLONING ARTIFACT	UNP Q9ELS8
A	-4	GLY	-	CLONING ARTIFACT	UNP Q9ELS8
A	-3	GLN	-	CLONING ARTIFACT	UNP Q9ELS8
A	-2	GLN	-	CLONING ARTIFACT	UNP Q9ELS8
A	-1	MET	-	CLONING ARTIFACT	UNP Q9ELS8
A	0	GLY	-	CLONING ARTIFACT	UNP Q9ELS8
A	119	ARG	GLN	CONFLICT	UNP Q9ELS8
A	182	GLY	-	CLONING ARTIFACT	UNP Q9ELS8
A	183	SER	-	CLONING ARTIFACT	UNP Q9ELS8
A	184	HIS	-	EXPRESSION TAG	UNP Q9ELS8
A	185	HIS	-	EXPRESSION TAG	UNP Q9ELS8
A	186	HIS	-	EXPRESSION TAG	UNP Q9ELS8
A	187	HIS	-	EXPRESSION TAG	UNP Q9ELS8
A	188	HIS	-	EXPRESSION TAG	UNP Q9ELS8
A	189	HIS	-	EXPRESSION TAG	UNP Q9ELS8
C	-10	MET	-	CLONING ARTIFACT	UNP Q9ELS8
C	-9	ALA	-	CLONING ARTIFACT	UNP Q9ELS8
C	-8	SER	-	CLONING ARTIFACT	UNP Q9ELS8
C	-7	MET	-	CLONING ARTIFACT	UNP Q9ELS8
C	-6	THR	-	CLONING ARTIFACT	UNP Q9ELS8

Continued on next page...

Continued from previous page...

Chain	Residue	Modelled	Actual	Comment	Reference
C	-5	GLY	-	CLONING ARTIFACT	UNP Q9ELS8
C	-4	GLY	-	CLONING ARTIFACT	UNP Q9ELS8
C	-3	GLN	-	CLONING ARTIFACT	UNP Q9ELS8
C	-2	GLN	-	CLONING ARTIFACT	UNP Q9ELS8
C	-1	MET	-	CLONING ARTIFACT	UNP Q9ELS8
C	0	GLY	-	CLONING ARTIFACT	UNP Q9ELS8
C	119	ARG	GLN	CONFLICT	UNP Q9ELS8
C	182	GLY	-	CLONING ARTIFACT	UNP Q9ELS8
C	183	SER	-	CLONING ARTIFACT	UNP Q9ELS8
C	184	HIS	-	EXPRESSION TAG	UNP Q9ELS8
C	185	HIS	-	EXPRESSION TAG	UNP Q9ELS8
C	186	HIS	-	EXPRESSION TAG	UNP Q9ELS8
C	187	HIS	-	EXPRESSION TAG	UNP Q9ELS8
C	188	HIS	-	EXPRESSION TAG	UNP Q9ELS8
C	189	HIS	-	EXPRESSION TAG	UNP Q9ELS8

- Molecule 2 is a protein called Hepatitis C virus.

Mol	Chain	Residues	Atoms				ZeroOcc	AltConf	Trace
2	B	22	Total	C	N	O	0	0	0
			159	105	29	25			
2	D	17	Total	C	N	O	0	0	0
			117	76	22	19			

There are 8 discrepancies between the modelled and reference sequences:

Chain	Residue	Modelled	Actual	Comment	Reference
B	19	LYS	-	CLONING ARTIFACT	UNP Q9QP06
B	20	LYS	-	CLONING ARTIFACT	UNP Q9QP06
B	40	LYS	-	CLONING ARTIFACT	UNP Q9QP06
B	41	LYS	-	CLONING ARTIFACT	UNP Q9QP06
D	19	LYS	-	CLONING ARTIFACT	UNP Q9QP06
D	20	LYS	-	CLONING ARTIFACT	UNP Q9QP06
D	40	LYS	-	CLONING ARTIFACT	UNP Q9QP06
D	41	LYS	-	CLONING ARTIFACT	UNP Q9QP06

- Molecule 3 is ZINC ION (three-letter code: ZN) (formula: Zn).

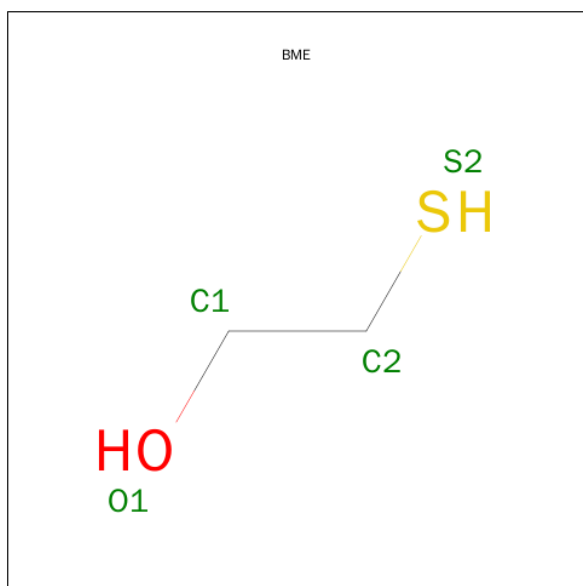
Mol	Chain	Residues	Atoms		ZeroOcc	AltConf
3	A	1	Total	Zn	0	0
			1	1		

Continued on next page...

Continued from previous page...

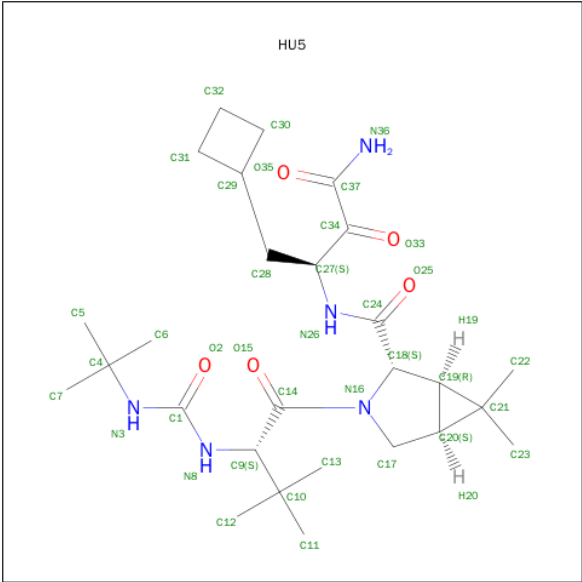
Mol	Chain	Residues	Atoms			ZeroOcc	AltConf
3	C	1	Total	Zn		0	0
			1	1			

- Molecule 4 is BETA-MERCAPTOETHANOL (three-letter code: BME) (formula: C_2H_6OS).



Mol	Chain	Residues	Atoms				ZeroOcc	AltConf
4	A	1	Total	C	O	S	0	0
			4	2	1	1		

- Molecule 5 is (1R,2S,5S)-N-[(1S)-3-AMINO-1-(CYCLOBUTYLMETHYL)-2,3-DIOXOPROPYL]-3-[(2S)-2-{[(TERT-BUTYLAMINO)CARBONYL]AMINO}-3,3-DIMETHYLBUTANOYL]-6,6-DIMETHYL-3-AZABICYCLO[3.1.0]HEXANE-2-CARBOXAMIDE (three-letter code: HU5) (formula: $C_{27}H_{45}N_5O_5$).



Mol	Chain	Residues	Atoms				ZeroOcc	AltConf
5	A	1	Total	C	N	O	0	0
			37	27	5	5		

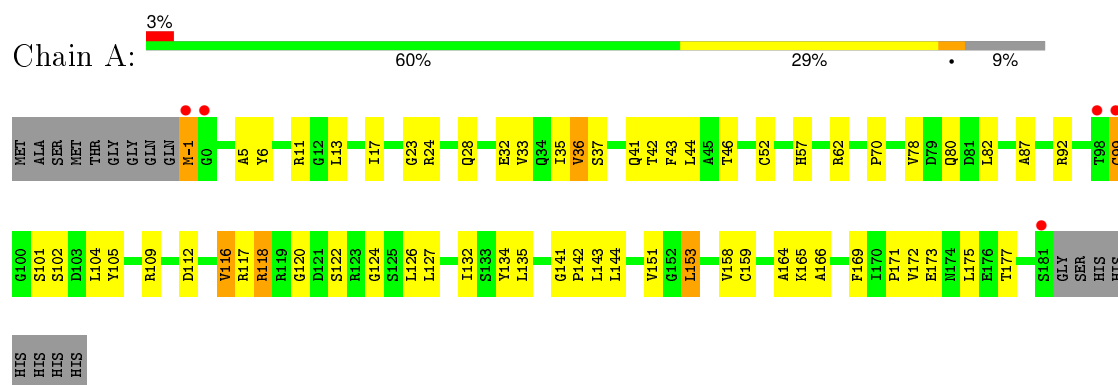
- Molecule 6 is water.

Mol	Chain	Residues	Atoms		ZeroOcc	AltConf
6	A	82	Total	O	0	0
			82	82		
6	B	9	Total	O	0	0
			9	9		
6	C	42	Total	O	0	0
			42	42		
6	D	5	Total	O	0	0
			5	5		

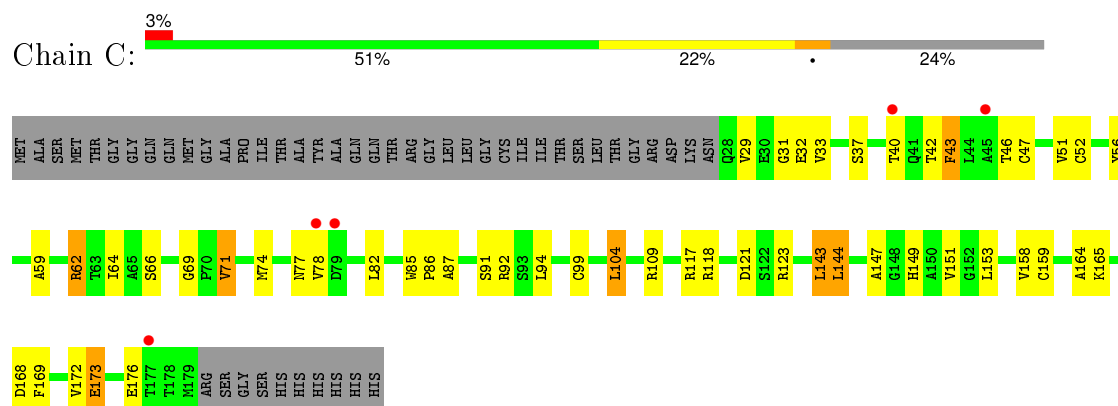
3 Residue-property plots

These plots are drawn for all protein, RNA and DNA chains in the entry. The first graphic for a chain summarises the proportions of errors displayed in the second graphic. The second graphic shows the sequence view annotated by issues in geometry and electron density. Residues are color-coded according to the number of geometric quality criteria for which they contain at least one outlier: green = 0, yellow = 1, orange = 2 and red = 3 or more. A red dot above a residue indicates a poor fit to the electron density ($RSRZ > 2$). Stretches of 2 or more consecutive residues without any outlier are shown as a green connector. Residues present in the sample, but not in the model, are shown in grey.

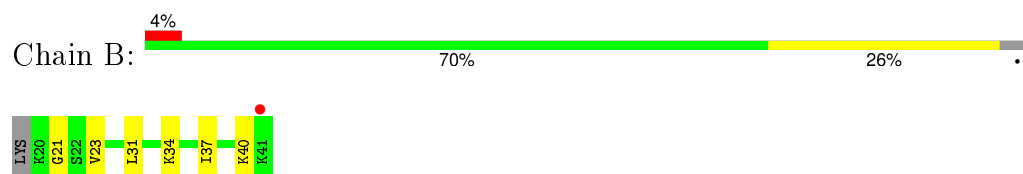
• Molecule 1: Hepatitis C virus



• Molecule 1: Hepatitis C virus

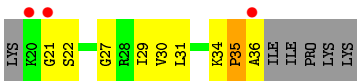


• Molecule 2: Hepatitis C virus



• Molecule 2: Hepatitis C virus





4 Data and refinement statistics

Property	Value	Source
Space group	H 3 2	Depositor
Cell constants a, b, c, α , β , γ	223.87Å 223.87Å 74.96Å 90.00° 90.00° 120.00°	Depositor
Resolution (Å)	8.00 – 2.66 24.39 – 2.65	Depositor EDS
% Data completeness (in resolution range)	87.2 (8.00-2.66) 97.2 (24.39-2.65)	Depositor EDS
R_{merge}	(Not available)	Depositor
R_{sym}	0.04	Depositor
$\langle I/\sigma(I) \rangle$ ¹	3.30 (at 2.64Å)	Xtriage
Refinement program	X-PLOR 98.1	Depositor
R, R_{free}	0.192 , 0.278 0.211 , 0.213	Depositor DCC
R_{free} test set	No test flags present.	DCC
Wilson B-factor (Å ²)	51.4	Xtriage
Anisotropy	0.118	Xtriage
Bulk solvent k_{sol} (e/Å ³), B_{sol} (Å ²)	0.37 , 86.7	EDS
Estimated twinning fraction	No twinning to report.	Xtriage
L-test for twinning ²	$\langle L \rangle = 0.49$, $\langle L^2 \rangle = 0.33$	Xtriage
Outliers	0 of 20306 reflections	Xtriage
F_o, F_c correlation	0.94	EDS
Total number of atoms	2935	wwPDB-VP
Average B, all atoms (Å ²)	41.0	wwPDB-VP

Xtriage's analysis on translational NCS is as follows: *The largest off-origin peak in the Patterson function is 5.01% of the height of the origin peak. No significant pseudotranslation is detected.*

¹Intensities estimated from amplitudes.

²Theoretical values of $\langle |L| \rangle$, $\langle L^2 \rangle$ for acentric reflections are 0.5, 0.375 respectively for untwinned datasets, and 0.333, 0.2 for perfectly twinned datasets.

5 Model quality [i](#)

5.1 Standard geometry [i](#)

Bond lengths and bond angles in the following residue types are not validated in this section: HU5, ZN, BME

The Z score for a bond length (or angle) is the number of standard deviations the observed value is removed from the expected value. A bond length (or angle) with $|Z| > 5$ is considered an outlier worth inspection. RMSZ is the root-mean-square of all Z scores of the bond lengths (or angles).

Mol	Chain	Bond lengths		Bond angles	
		RMSZ	$\# Z > 5$	RMSZ	$\# Z > 5$
1	A	0.44	0/1379	0.73	0/1879
1	C	0.39	0/1149	0.72	0/1569
2	B	0.45	0/160	0.77	0/212
2	D	0.48	0/117	0.68	0/156
All	All	0.43	0/2805	0.73	0/3816

There are no bond length outliers.

There are no bond angle outliers.

There are no chirality outliers.

There are no planarity outliers.

5.2 Too-close contacts [i](#)

In the following table, the Non-H and H(model) columns list the number of non-hydrogen atoms and hydrogen atoms in the chain respectively. The H(added) column lists the number of hydrogen atoms added and optimized by MolProbity. The Clashes column lists the number of clashes within the asymmetric unit, whereas Symm-Clashes lists symmetry related clashes.

Mol	Chain	Non-H	H(model)	H(added)	Clashes	Symm-Clashes
1	A	1353	0	1367	56	0
1	C	1125	0	1127	39	0
2	B	159	0	193	7	0
2	D	117	0	138	10	0
3	A	1	0	0	0	0
3	C	1	0	0	0	0
4	A	4	0	5	0	0
5	A	37	0	45	3	0
6	A	82	0	0	2	0

Continued on next page...

Continued from previous page...

Mol	Chain	Non-H	H(model)	H(added)	Clashes	Symm-Clashes
6	B	9	0	0	1	0
6	C	42	0	0	1	0
6	D	5	0	0	0	0
All	All	2935	0	2875	99	0

The all-atom clashscore is defined as the number of clashes found per 1000 atoms (including hydrogen atoms). The all-atom clashscore for this structure is 17.

All (99) close contacts within the same asymmetric unit are listed below, sorted by their clash magnitude.

Atom-1	Atom-2	Interatomic distance (Å)	Clash overlap (Å)
1:C:37:SER:HB3	1:C:42:THR:HG23	1.67	0.76
1:C:66:SER:HB3	1:C:69:GLY:O	1.87	0.75
1:C:159:CYS:HB3	1:C:164:ALA:HA	1.70	0.73
1:A:11:ARG:HG2	1:A:11:ARG:HH11	1.59	0.67
1:C:42:THR:HG21	1:C:109:ARG:HH22	1.60	0.67
1:C:59:ALA:O	1:C:62:ARG:HB2	1.95	0.66
1:A:112:ASP:HB2	1:A:134:TYR:OH	1.96	0.66
2:B:37:ILE:HD13	2:D:29:ILE:HG12	1.78	0.65
1:A:132:ILE:HG23	5:A:999:HU5:H322	1.78	0.65
1:C:32:GLU:HG3	1:C:92:ARG:HG3	1.80	0.62
1:A:117:ARG:HB2	1:A:127:LEU:HD11	1.82	0.62
1:A:46:THR:HG21	1:A:142:PRO:HB3	1.81	0.61
1:A:24:ARG:NH1	1:A:24:ARG:HB2	2.14	0.61
1:A:24:ARG:HH11	1:A:24:ARG:HB2	1.66	0.60
1:C:31:GLY:O	1:C:91:SER:HA	2.02	0.60
1:A:132:ILE:HD11	1:A:159:CYS:HB3	1.83	0.60
1:A:78:VAL:HG23	6:A:1007:HOH:O	2.01	0.60
1:A:-1:MET:N	1:A:-1:MET:SD	2.72	0.59
1:C:42:THR:HG22	1:C:109:ARG:HH12	1.67	0.59
1:C:64:ILE:HG23	1:C:71:VAL:HG13	1.84	0.59
1:A:92:ARG:HB3	1:A:92:ARG:NH1	2.20	0.57
1:C:118:ARG:HE	1:C:169:PHE:HZ	1.54	0.56
1:A:158:VAL:HB	1:A:166:ALA:HB3	1.88	0.55
1:C:32:GLU:HG3	1:C:92:ARG:CG	2.36	0.55
1:A:23:GLY:HA3	1:A:70:PRO:HG3	1.88	0.55
1:C:42:THR:HG21	1:C:109:ARG:NH2	2.22	0.55
1:A:80:GLN:HE21	1:A:80:GLN:HA	1.71	0.55
1:A:99:CYS:SG	1:A:101:SER:OG	2.65	0.55
1:A:122:SER:HB2	1:A:169:PHE:O	2.08	0.54
1:C:32:GLU:HG2	1:C:94:LEU:HD13	1.89	0.54

Continued on next page...

Continued from previous page...

Atom-1	Atom-2	Interatomic distance (Å)	Clash overlap (Å)
1:A:62:ARG:HD3	2:B:21:GLY:O	2.09	0.53
1:C:29:VAL:HG22	2:D:36:ALA:HB3	1.90	0.53
1:A:173:GLU:O	1:A:177:THR:HG23	2.07	0.53
1:A:117:ARG:O	1:A:124:GLY:HA2	2.09	0.52
1:A:13:LEU:O	1:A:17:ILE:HG13	2.08	0.52
1:A:102:SER:HB2	1:A:117:ARG:NH1	2.25	0.52
1:A:112:ASP:HB2	1:A:134:TYR:HH	1.73	0.51
1:A:127:LEU:HD23	1:C:99:CYS:HA	1.92	0.51
1:C:123:ARG:CZ	1:C:158:VAL:HG21	2.41	0.51
1:A:36:VAL:HG22	2:B:23:VAL:HG12	1.93	0.51
1:A:37:SER:HB3	1:A:42:THR:OG1	2.10	0.50
1:A:5:ALA:HB2	2:B:31:LEU:HD23	1.93	0.50
1:A:82:LEU:HD11	1:A:175:LEU:HD12	1.94	0.50
1:A:104:LEU:HB2	1:A:116:VAL:HG22	1.93	0.49
1:A:102:SER:HB2	1:A:117:ARG:CZ	2.43	0.49
1:A:32:GLU:HB3	1:A:92:ARG:O	2.13	0.48
1:A:109:ARG:HH11	1:A:109:ARG:HG2	1.78	0.48
1:A:6:TYR:HB2	2:D:34:LYS:HD2	1.96	0.48
1:A:171:PRO:HB2	1:A:173:GLU:OE2	2.14	0.47
1:C:85:TRP:HB3	1:C:86:PRO:HD2	1.95	0.47
1:A:132:ILE:CD1	1:A:164:ALA:HB2	2.45	0.47
1:C:47:CYS:HA	1:C:51:VAL:O	2.15	0.46
1:A:32:GLU:HA	1:A:92:ARG:O	2.15	0.46
1:A:92:ARG:HB3	1:A:92:ARG:HH11	1.80	0.46
1:C:104:LEU:HB3	1:C:143:LEU:HD23	1.97	0.46
2:B:40:LYS:HZ1	2:D:27:GLY:HA2	1.81	0.46
1:A:11:ARG:HH11	1:A:11:ARG:CG	2.27	0.46
1:A:57:HIS:NE2	5:A:999:HU5:H19	2.31	0.46
1:A:132:ILE:HG23	5:A:999:HU5:C32	2.44	0.46
1:C:43:PHE:CD1	1:C:43:PHE:N	2.84	0.46
1:A:126:LEU:HD12	1:A:126:LEU:HA	1.80	0.46
2:D:30:VAL:HG13	2:D:30:VAL:O	2.17	0.45
1:A:141:GLY:O	1:A:153:LEU:HA	2.17	0.45
1:C:64:ILE:CG2	1:C:71:VAL:HG13	2.47	0.45
1:A:52:CYS:HB2	1:A:87:ALA:HA	1.98	0.45
1:A:33:VAL:HG22	1:A:46:THR:HG23	1.99	0.44
1:A:172:VAL:O	1:A:175:LEU:HB2	2.18	0.44
1:C:94:LEU:HD11	2:D:31:LEU:HD12	2.00	0.44
1:A:28:GLN:HA	1:A:28:GLN:OE1	2.18	0.44
1:C:52:CYS:HB2	1:C:87:ALA:HA	2.00	0.43
1:A:105:TYR:CD1	1:C:147:ALA:HB2	2.52	0.43

Continued on next page...

Continued from previous page...

Atom-1	Atom-2	Interatomic distance (Å)	Clash overlap (Å)
1:C:173:GLU:CD	1:C:173:GLU:H	2.20	0.43
1:A:109:ARG:NH1	1:A:109:ARG:HG2	2.33	0.43
1:C:74:MET:HG3	1:C:86:PRO:HD3	2.00	0.43
1:A:35:ILE:HA	1:A:44:LEU:HD23	2.00	0.43
2:B:34:LYS:HE2	6:B:50:HOH:O	2.19	0.43
1:A:104:LEU:HD22	1:A:151:VAL:HG21	1.99	0.43
1:C:46:THR:HB	1:C:153:LEU:HD11	2.00	0.42
1:C:62:ARG:HG2	2:D:21:GLY:O	2.20	0.42
1:A:41:GLN:HG2	6:A:1074:HOH:O	2.18	0.42
2:D:35:PRO:HG2	2:D:36:ALA:H	1.84	0.42
1:C:77:ASN:N	1:C:82:LEU:O	2.53	0.42
1:A:118:ARG:HG3	1:A:120:GLY:H	1.84	0.42
1:A:132:ILE:HD11	1:A:164:ALA:HB2	2.01	0.42
2:D:34:LYS:HA	2:D:35:PRO:HD2	1.90	0.42
1:C:104:LEU:HD23	1:C:143:LEU:CD2	2.49	0.42
1:A:105:TYR:CE1	1:C:147:ALA:HB2	2.54	0.42
1:A:43:PHE:CD1	1:A:43:PHE:N	2.88	0.42
1:A:80:GLN:NE2	1:A:80:GLN:HA	2.33	0.41
1:A:132:ILE:HD13	1:A:132:ILE:HA	1.72	0.41
2:B:40:LYS:N	2:B:40:LYS:HD2	2.35	0.41
1:C:56:TYR:CE1	1:C:78:VAL:HG22	2.56	0.41
1:C:144:LEU:HA	1:C:149:HIS:O	2.21	0.41
1:C:94:LEU:HA	1:C:94:LEU:HD12	1.83	0.41
1:C:143:LEU:O	1:C:151:VAL:HB	2.20	0.41
1:C:104:LEU:HD23	1:C:143:LEU:HD22	2.02	0.41
1:C:165:LYS:HB2	6:C:915:HOH:O	2.21	0.40
1:C:172:VAL:O	1:C:176:GLU:HG3	2.21	0.40
1:C:33:VAL:HB	2:D:29:ILE:HB	2.02	0.40

There are no symmetry-related clashes.

5.3 Torsion angles [i](#)

5.3.1 Protein backbone [i](#)

In the following table, the Percentiles column shows the percent Ramachandran outliers of the chain as a percentile score with respect to all X-ray entries followed by that with respect to entries of similar resolution.

The Analysed column shows the number of residues for which the backbone conformation was analysed, and the total number of residues.

Mol	Chain	Analysed	Favoured	Allowed	Outliers	Percentiles	
1	A	181/200 (90%)	173 (96%)	7 (4%)	1 (1%)	30	54
1	C	150/200 (75%)	138 (92%)	12 (8%)	0	100	100
2	B	20/23 (87%)	20 (100%)	0	0	100	100
2	D	15/23 (65%)	14 (93%)	0	1 (7%)	1	1
All	All	366/446 (82%)	345 (94%)	19 (5%)	2 (0%)	34	59

All (2) Ramachandran outliers are listed below:

Mol	Chain	Res	Type
1	A	99	CYS
2	D	35	PRO

5.3.2 Protein sidechains ⓘ

In the following table, the Percentiles column shows the percent sidechain outliers of the chain as a percentile score with respect to all X-ray entries followed by that with respect to entries of similar resolution.

The Analysed column shows the number of residues for which the sidechain conformation was analysed, and the total number of residues.

Mol	Chain	Analysed	Rotameric	Outliers	Percentiles	
1	A	148/161 (92%)	139 (94%)	9 (6%)	23	46
1	C	124/161 (77%)	113 (91%)	11 (9%)	12	25
2	B	18/19 (95%)	18 (100%)	0	100	100
2	D	13/19 (68%)	12 (92%)	1 (8%)	16	33
All	All	303/360 (84%)	282 (93%)	21 (7%)	19	39

All (21) residues with a non-rotameric sidechain are listed below:

Mol	Chain	Res	Type
1	A	-1	MET
1	A	36	VAL
1	A	116	VAL
1	A	118	ARG
1	A	135	LEU
1	A	143	LEU
1	A	144	LEU
1	A	153	LEU
1	A	165	LYS

Continued on next page...

Continued from previous page...

Mol	Chain	Res	Type
1	C	40	THR
1	C	43	PHE
1	C	62	ARG
1	C	71	VAL
1	C	104	LEU
1	C	117	ARG
1	C	121	ASP
1	C	143	LEU
1	C	144	LEU
1	C	168	ASP
1	C	173	GLU
2	D	22	SER

Some sidechains can be flipped to improve hydrogen bonding and reduce clashes. All (2) such sidechains are listed below:

Mol	Chain	Res	Type
1	A	34	GLN
1	A	80	GLN

5.3.3 RNA [i](#)

There are no RNA molecules in this entry.

5.4 Non-standard residues in protein, DNA, RNA chains [i](#)

There are no non-standard protein/DNA/RNA residues in this entry.

5.5 Carbohydrates [i](#)

There are no carbohydrates in this entry.

5.6 Ligand geometry [i](#)

Of 4 ligands modelled in this entry, 2 are monoatomic - leaving 2 for Mogul analysis.

In the following table, the Counts columns list the number of bonds (or angles) for which Mogul statistics could be retrieved, the number of bonds (or angles) that are observed in the model and the number of bonds (or angles) that are defined in the chemical component dictionary. The Link column lists molecule types, if any, to which the group is linked. The Z score for a bond length

(or angle) is the number of standard deviations the observed value is removed from the expected value. A bond length (or angle) with $|Z| > 2$ is considered an outlier worth inspection. RMSZ is the root-mean-square of all Z scores of the bond lengths (or angles).

Mol	Type	Chain	Res	Link	Bond lengths			Bond angles		
					Counts	RMSZ	$\# Z > 2$	Counts	RMSZ	$\# Z > 2$
4	BME	A	801	1	3,3,3	0.42	0	2,2,2	0.67	0
5	HU5	A	999	1	37,39,39	2.41	3 (8%)	50,62,62	2.24	7 (14%)

In the following table, the Chirals column lists the number of chiral outliers, the number of chiral centers analysed, the number of these observed in the model and the number defined in the chemical component dictionary. Similar counts are reported in the Torsion and Rings columns. '-' means no outliers of that kind were identified.

Mol	Type	Chain	Res	Link	Chirals	Torsions	Rings
4	BME	A	801	1	-	0/1/1/1	0/0/0/0
5	HU5	A	999	1	-	0/40/74/74	0/2/3/3

All (3) bond length outliers are listed below:

Mol	Chain	Res	Type	Atoms	Z	Observed(Å)	Ideal(Å)
5	A	999	HU5	C22-C21	-2.37	1.46	1.53
5	A	999	HU5	C17-C20	-2.26	1.48	1.52
5	A	999	HU5	O33-C34	13.77	1.47	1.22

All (7) bond angle outliers are listed below:

Mol	Chain	Res	Type	Atoms	Z	Observed(°)	Ideal(°)
5	A	999	HU5	O33-C34-C37	-9.51	107.73	119.45
5	A	999	HU5	C17-C20-C21	-8.44	110.31	119.95
5	A	999	HU5	O33-C34-C27	-5.66	110.06	119.69
5	A	999	HU5	C34-C37-N36	2.44	120.78	114.92
5	A	999	HU5	C7-C4-N3	2.49	115.09	108.75
5	A	999	HU5	C13-C10-C9	2.65	115.25	109.75
5	A	999	HU5	C19-C18-N16	3.88	108.55	102.92

There are no chirality outliers.

There are no torsion outliers.

There are no ring outliers.

1 monomer is involved in 3 short contacts:

Mol	Chain	Res	Type	Clashes	Symm-Clashes
5	A	999	HU5	3	0

5.7 Other polymers

There are no such residues in this entry.

5.8 Polymer linkage issues

There are no chain breaks in this entry.

6 Fit of model and data [i](#)

6.1 Protein, DNA and RNA chains [i](#)

In the following table, the column labelled ‘#RSRZ> 2’ contains the number (and percentage) of RSRZ outliers, followed by percent RSRZ outliers for the chain as percentile scores relative to all X-ray entries and entries of similar resolution. The OWAB column contains the minimum, median, 95th percentile and maximum values of the occupancy-weighted average B-factor per residue. The column labelled ‘Q< 0.9’ lists the number of (and percentage) of residues with an average occupancy less than 0.9.

Mol	Chain	Analysed	<RSRZ>	#RSRZ>2	OWAB(Å ²)	Q<0.9
1	A	183/200 (91%)	-0.22	5 (2%) 58 56	17, 34, 64, 100	0
1	C	152/200 (76%)	0.04	5 (3%) 50 48	26, 43, 69, 86	0
2	B	22/23 (95%)	-0.28	1 (4%) 37 35	17, 31, 68, 99	0
2	D	17/23 (73%)	0.08	3 (17%) 2 1	21, 30, 82, 85	0
All	All	374/446 (83%)	-0.10	14 (3%) 45 44	17, 38, 70, 100	0

All (14) RSRZ outliers are listed below:

Mol	Chain	Res	Type	RSRZ
2	D	20	LYS	4.7
1	A	-1	MET	4.5
2	D	21	GLY	3.6
1	C	40	THR	3.4
1	C	79	ASP	3.4
1	A	98	THR	2.9
1	C	78	VAL	2.9
2	D	36	ALA	2.9
1	A	99	CYS	2.4
1	A	181	SER	2.4
2	B	41	LYS	2.3
1	C	45	ALA	2.2
1	A	0	GLY	2.2
1	C	177	THR	2.1

6.2 Non-standard residues in protein, DNA, RNA chains [i](#)

There are no non-standard protein/DNA/RNA residues in this entry.

6.3 Carbohydrates [i](#)

There are no carbohydrates in this entry.

6.4 Ligands [i](#)

In the following table, the Atoms column lists the number of modelled atoms in the group and the number defined in the chemical component dictionary. LLDF column lists the quality of electron density of the group with respect to its neighbouring residues in protein, DNA or RNA chains. The B-factors column lists the minimum, median, 95th percentile and maximum values of B factors of atoms in the group. The column labelled 'Q< 0.9' lists the number of atoms with occupancy less than 0.9.

Mol	Type	Chain	Res	Atoms	RSCC	RSR	LLDF	B-factors(\AA^2)	Q<0.9
4	BME	A	801	4/4	0.96	0.25	2.09	49,55,61,68	0
5	HU5	A	999	37/37	0.94	0.18	0.42	17,34,41,43	0
3	ZN	A	901	1/1	0.97	0.06	-1.82	65,65,65,65	0
3	ZN	C	902	1/1	0.99	0.05	-1.86	46,46,46,46	0

6.5 Other polymers [i](#)

There are no such residues in this entry.