



Full wwPDB X-ray Structure Validation Report ⓘ

Feb 1, 2016 – 04:53 AM GMT

PDB ID : 2OM2
Title : Crystal Structure Of Human G[alpha]i1 Bound To The Goloco Motif Of Rgs14
Authors : Siderovski, D.P.; Kimple, R.J.
Deposited on : 2007-01-20
Resolution : 2.20 Å(reported)

This is a Full wwPDB X-ray Structure Validation Report for a publicly released PDB entry.
We welcome your comments at validation@mail.wwpdb.org
A user guide is available at
<http://wwpdb.org/validation/2016/XrayValidationReportHelp>
with specific help available everywhere you see the ⓘ symbol.

The following versions of software and data (see [references ⓘ](#)) were used in the production of this report:

MolProbity : 4.02b-467
Mogul : 1.7 (RC4), CSD as536be (2015)
Xtriage (Phenix) : 1.9-1692
EDS : rb-20026688
Percentile statistics : 20151230.v01 (using entries in the PDB archive December 30th 2015)
Refmac : 5.8.0135
CCP4 : 6.5.0
Ideal geometry (proteins) : Engh & Huber (2001)
Ideal geometry (DNA, RNA) : Parkinson et al. (1996)
Validation Pipeline (wwPDB-VP) : trunk26865

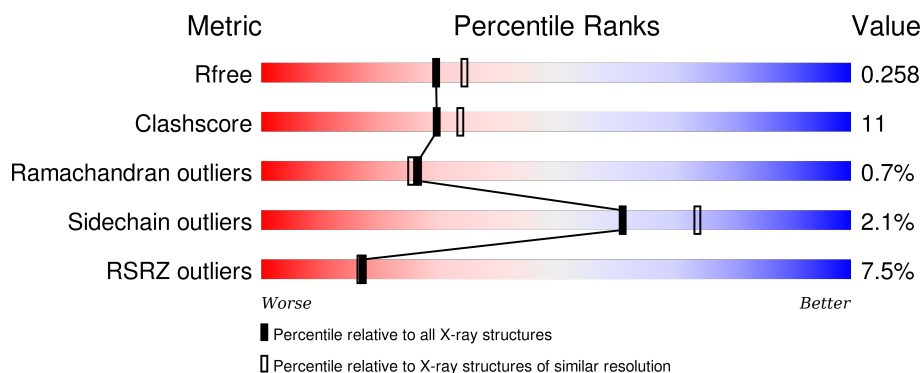
1 Overall quality at a glance

The following experimental techniques were used to determine the structure:

X-RAY DIFFRACTION

The reported resolution of this entry is 2.20 Å.

Percentile scores (ranging between 0-100) for global validation metrics of the entry are shown in the following graphic. The table shows the number of entries on which the scores are based.



Metric	Whole archive (#Entries)	Similar resolution (#Entries, resolution range(Å))
R_{free}	91344	3774 (2.20-2.20)
Clashscore	102246	4477 (2.20-2.20)
Ramachandran outliers	100387	4404 (2.20-2.20)
Sidechain outliers	100360	4405 (2.20-2.20)
RSRZ outliers	91569	3781 (2.20-2.20)

The table below summarises the geometric issues observed across the polymeric chains and their fit to the electron density. The red, orange, yellow and green segments on the lower bar indicate the fraction of residues that contain outliers for ≥ 3 , 2, 1 and 0 types of geometric quality criteria. A grey segment represents the fraction of residues that are not modelled. The numeric value for each fraction is indicated below the corresponding segment, with a dot representing fractions $\leq 5\%$. The upper red bar (where present) indicates the fraction of residues that have poor fit to the electron density. The numeric value is given above the bar.

Mol	Chain	Length	Quality of chain
1	A	325	<div> <div>7%</div> <div>77%</div> <div>21%</div> <div>.</div> </div>
1	C	325	<div> <div>6%</div> <div>74%</div> <div>21%</div> <div>..</div> </div>
2	B	36	<div> <div>19%</div> <div>67%</div> <div>25%</div> <div>8%</div> </div>
2	D	36	<div> <div>6%</div> <div>72%</div> <div>28%</div> </div>

2 Entry composition

There are 5 unique types of molecules in this entry. The entry contains 6039 atoms, of which 0 are hydrogens and 0 are deuteriums.

In the tables below, the ZeroOcc column contains the number of atoms modelled with zero occupancy, the AltConf column contains the number of residues with at least one atom in alternate conformation and the Trace column contains the number of residues modelled with at most 2 atoms.

- Molecule 1 is a protein called Guanine nucleotide-binding protein G(i), alpha-1 subunit.

Mol	Chain	Residues	Atoms					ZeroOcc	AltConf	Trace
1	A	320	Total	C	N	O	S	0	0	0
			2566	1630	433	488	15			
1	C	318	Total	C	N	O	S	0	0	0
			2553	1621	431	486	15			

There are 2 discrepancies between the modelled and reference sequences:

Chain	Residue	Modelled	Actual	Comment	Reference
A	30	GLY	-	CLONING ARTIFACT	UNP P63096
C	1030	GLY	-	CLONING ARTIFACT	UNP P63096

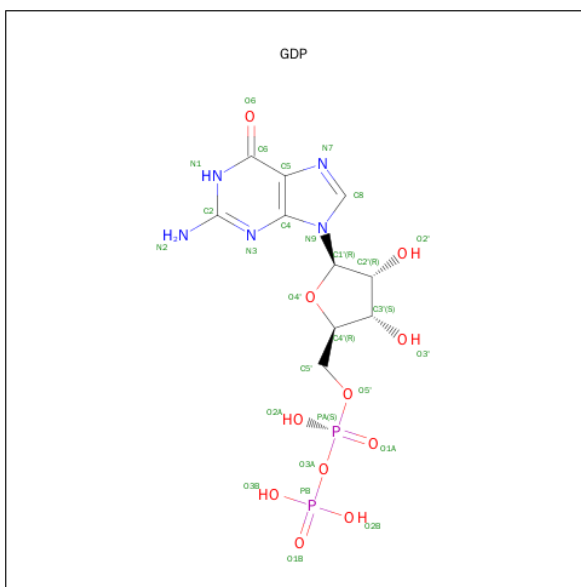
- Molecule 2 is a protein called Regulator of G-protein signalling 14 GoLoco motif peptide.

Mol	Chain	Residues	Atoms				ZeroOcc	AltConf	Trace
2	B	36	Total	C	N	O	0	0	0
			288	179	52	57			
2	D	36	Total	C	N	O	0	0	0
			288	179	52	57			

- Molecule 3 is MAGNESIUM ION (three-letter code: MG) (formula: Mg).

Mol	Chain	Residues	Atoms		ZeroOcc	AltConf
3	A	1	Total	Mg	0	0
			1	1		
3	C	1	Total	Mg	0	0
			1	1		

- Molecule 4 is GUANOSINE-5'-DIPHOSPHATE (three-letter code: GDP) (formula: C₁₀H₁₅N₅O₁₁P₂).



Mol	Chain	Residues	Atoms					ZeroOcc	AltConf
4	A	1	Total 28	C 10	N 5	O 11	P 2	0	0
4	C	1	Total 28	C 10	N 5	O 11	P 2	0	0

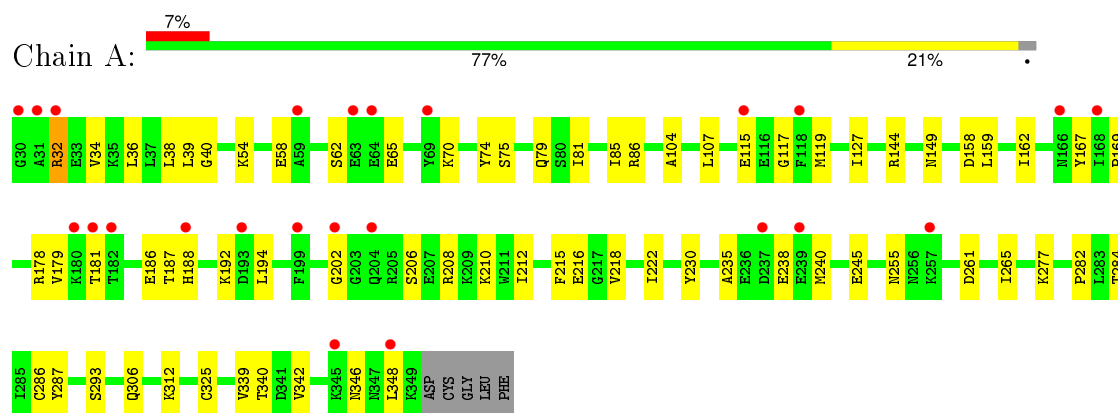
- Molecule 5 is water.

Mol	Chain	Residues	Atoms	ZeroOcc	AltConf
5	A	128	Total O 128 128	0	0
5	B	8	Total O 8 8	0	0
5	C	145	Total O 145 145	0	0
5	D	5	Total O 5 5	0	0

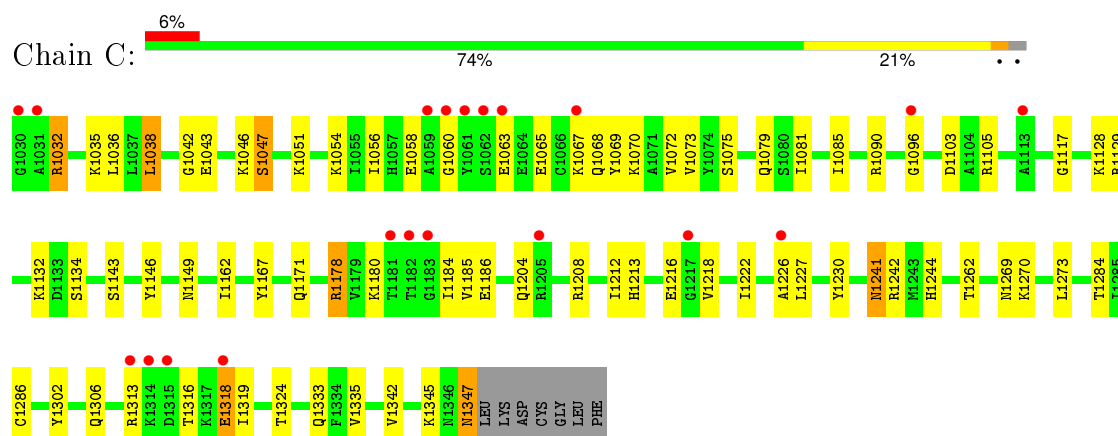
3 Residue-property plots [i](#)

These plots are drawn for all protein, RNA and DNA chains in the entry. The first graphic for a chain summarises the proportions of errors displayed in the second graphic. The second graphic shows the sequence view annotated by issues in geometry and electron density. Residues are color-coded according to the number of geometric quality criteria for which they contain at least one outlier: green = 0, yellow = 1, orange = 2 and red = 3 or more. A red dot above a residue indicates a poor fit to the electron density ($\text{RSRZ} > 2$). Stretches of 2 or more consecutive residues without any outlier are shown as a green connector. Residues present in the sample, but not in the model, are shown in grey.

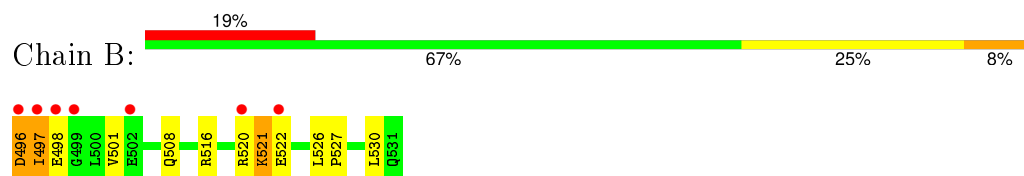
- Molecule 1: Guanine nucleotide-binding protein G(i), alpha-1 subunit



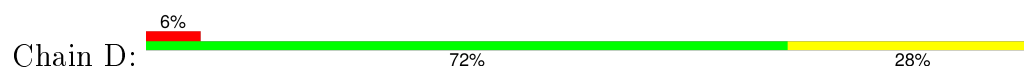
- Molecule 1: Guanine nucleotide-binding protein G(i), alpha-1 subunit

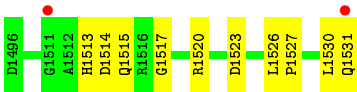


- Molecule 2: Regulator of G-protein signalling 14 GoLoco motif peptide



- Molecule 2: Regulator of G-protein signalling 14 GoLoco motif peptide





4 Data and refinement statistics

Property	Value	Source
Space group	P 2 2 21	Depositor
Cell constants a, b, c, α , β , γ	69.59 Å 82.31 Å 187.57 Å 90.00° 90.00° 90.00°	Depositor
Resolution (Å)	20.00 – 2.20 49.79 – 2.20	Depositor EDS
% Data completeness (in resolution range)	99.9 (20.00-2.20) 99.9 (49.79-2.20)	Depositor EDS
R_{merge}	(Not available)	Depositor
R_{sym}	(Not available)	Depositor
$\langle I/\sigma(I) \rangle$ ¹	2.57 (at 2.20 Å)	Xtriage
Refinement program	CNS	Depositor
R, R_{free}	0.227 , 0.260 0.228 , 0.258	Depositor DCC
R_{free} test set	5627 reflections (10.15%)	DCC
Wilson B-factor (Å ²)	32.8	Xtriage
Anisotropy	0.187	Xtriage
Bulk solvent k_{sol} (e/Å ³), B_{sol} (Å ²)	0.36 , 49.6	EDS
Estimated twinning fraction	No twinning to report.	Xtriage
L-test for twinning ²	$\langle L \rangle = 0.48$, $\langle L^2 \rangle = 0.32$	Xtriage
Outliers	1 of 55526 reflections (0.002%)	Xtriage
F_o, F_c correlation	0.93	EDS
Total number of atoms	6039	wwPDB-VP
Average B, all atoms (Å ²)	41.0	wwPDB-VP

Xtriage's analysis on translational NCS is as follows: *The largest off-origin peak in the Patterson function is 4.85% of the height of the origin peak. No significant pseudotranslation is detected.*

¹Intensities estimated from amplitudes.

²Theoretical values of $\langle |L| \rangle$, $\langle L^2 \rangle$ for acentric reflections are 0.5, 0.375 respectively for untwinned datasets, and 0.333, 0.2 for perfectly twinned datasets.

5 Model quality [i](#)

5.1 Standard geometry [i](#)

Bond lengths and bond angles in the following residue types are not validated in this section: GDP, MG

The Z score for a bond length (or angle) is the number of standard deviations the observed value is removed from the expected value. A bond length (or angle) with $|Z| > 5$ is considered an outlier worth inspection. RMSZ is the root-mean-square of all Z scores of the bond lengths (or angles).

Mol	Chain	Bond lengths		Bond angles	
		RMSZ	$\# Z > 5$	RMSZ	$\# Z > 5$
1	A	0.36	0/2612	0.55	0/3519
1	C	0.36	0/2599	0.56	0/3501
2	B	0.30	0/290	0.58	0/388
2	D	0.31	0/290	0.51	0/388
All	All	0.35	0/5791	0.56	0/7796

There are no bond length outliers.

There are no bond angle outliers.

There are no chirality outliers.

There are no planarity outliers.

5.2 Too-close contacts [i](#)

In the following table, the Non-H and H(model) columns list the number of non-hydrogen atoms and hydrogen atoms in the chain respectively. The H(added) column lists the number of hydrogen atoms added and optimized by MolProbity. The Clashes column lists the number of clashes within the asymmetric unit, whereas Symm-Clashes lists symmetry related clashes.

Mol	Chain	Non-H	H(model)	H(added)	Clashes	Symm-Clashes
1	A	2566	0	2540	51	0
1	C	2553	0	2527	59	0
2	B	288	0	290	22	0
2	D	288	0	290	8	0
3	A	1	0	0	0	0
3	C	1	0	0	0	0
4	A	28	0	12	1	0
4	C	28	0	12	2	0
5	A	128	0	0	4	0

Continued on next page...

Continued from previous page...

Mol	Chain	Non-H	H(model)	H(added)	Clashes	Symm-Clashes
5	B	8	0	0	0	0
5	C	145	0	0	5	0
5	D	5	0	0	0	0
All	All	6039	0	5671	128	0

The all-atom clashscore is defined as the number of clashes found per 1000 atoms (including hydrogen atoms). The all-atom clashscore for this structure is 11.

All (128) close contacts within the same asymmetric unit are listed below, sorted by their clash magnitude.

Atom-1	Atom-2	Interatomic distance (Å)	Clash overlap (Å)
1:A:86:ARG:HH11	1:A:86:ARG:HG3	1.46	0.81
1:C:1313:ARG:HB3	1:C:1316:THR:HB	1.63	0.79
1:A:40:GLY:H	2:B:508:GLN:NE2	1.79	0.79
1:A:86:ARG:HD3	2:B:527:PRO:HB3	1.65	0.77
1:C:1046:LYS:O	1:C:1047:SER:HB2	1.85	0.75
1:C:1212:ILE:O	1:C:1216:GLU:HG2	1.92	0.69
1:A:282:PRO:HB2	1:A:284:THR:HG22	1.76	0.67
1:A:40:GLY:H	2:B:508:GLN:HE21	1.40	0.67
2:B:520:ARG:HG3	2:B:521:LYS:HD3	1.76	0.67
1:C:1054:LYS:HE2	1:C:1060:GLY:O	1.94	0.67
2:D:1526:LEU:HD12	2:D:1527:PRO:HD2	1.77	0.67
1:C:1038:LEU:HD12	1:C:1222:ILE:HB	1.78	0.66
2:B:526:LEU:HD12	2:B:527:PRO:HD2	1.78	0.65
1:C:1042:GLY:O	1:C:1242:ARG:NH2	2.29	0.65
1:A:178:ARG:O	2:B:516:ARG:O	2.15	0.65
2:B:496:ASP:C	2:B:498:GLU:H	2.01	0.65
2:B:497:ILE:O	2:B:501:VAL:HG23	1.98	0.63
1:A:277:LYS:HE3	5:A:4052:HOH:O	1.99	0.63
2:B:527:PRO:HG2	2:B:530:LEU:HD12	1.81	0.63
1:C:1070:LYS:HE3	1:C:1117:GLY:O	2.00	0.62
2:B:520:ARG:NE	2:B:521:LYS:HD2	2.15	0.62
1:A:208:ARG:NH1	2:B:498:GLU:HB2	2.14	0.62
1:C:1128:LYS:HE2	1:C:1132:LYS:HE2	1.83	0.61
1:A:86:ARG:HG3	1:A:86:ARG:NH1	2.13	0.60
1:C:1218:VAL:HG23	1:C:1262:THR:HG23	1.84	0.60
1:C:1226:ALA:O	1:C:1270:LYS:HB2	2.02	0.60
2:B:521:LYS:HE3	2:B:522:GLU:HG3	1.84	0.59
1:C:1081:ILE:O	1:C:1085:ILE:HG12	2.02	0.59
1:C:1178:ARG:HD3	2:D:1515:GLN:O	2.03	0.59
1:A:265:ILE:N	1:A:265:ILE:HD12	2.19	0.58

Continued on next page...

Continued from previous page...

Atom-1	Atom-2	Interatomic distance (Å)	Clash overlap (Å)
1:C:1241:ASN:ND2	1:C:1244:HIS:H	2.01	0.58
1:C:1204:GLN:HG2	5:C:4208:HOH:O	2.04	0.57
1:A:39:LEU:HA	2:B:508:GLN:HE22	1.69	0.57
1:A:235:ALA:HB3	1:A:238:GLU:HG2	1.86	0.56
1:C:1318:GLU:O	1:C:1319:ILE:HD13	2.06	0.56
1:C:1035:LYS:HE2	1:C:1218:VAL:HG12	1.87	0.55
1:C:1056:ILE:HG23	1:C:1333:GLN:HE21	1.72	0.55
1:C:1046:LYS:O	4:C:356:GDP:O1B	2.25	0.54
2:D:1531:GLN:OXT	2:D:1531:GLN:HG3	2.06	0.54
1:A:179:VAL:O	2:B:516:ARG:HG2	2.08	0.54
1:A:192:LYS:HD2	1:A:340:THR:HG21	1.90	0.54
1:A:75:SER:O	1:A:79:GLN:HG3	2.09	0.53
1:C:1046:LYS:O	1:C:1047:SER:CB	2.52	0.53
1:A:208:ARG:HD2	2:B:498:GLU:OE1	2.08	0.53
1:A:342:VAL:O	1:A:346:ASN:HB2	2.08	0.52
1:A:74:TYR:HE1	1:A:162:ILE:HG22	1.75	0.52
1:C:1149:ASN:HB2	1:C:1178:ARG:CZ	2.40	0.51
1:C:1241:ASN:C	1:C:1241:ASN:HD22	2.14	0.51
1:C:1069:TYR:O	1:C:1072:VAL:HG12	2.11	0.50
1:C:1171:GLN:HA	1:C:1171:GLN:HE21	1.76	0.50
1:C:1347:ASN:C	1:C:1347:ASN:HD22	2.14	0.50
1:C:1051:LYS:HG3	5:C:4151:HOH:O	2.11	0.50
1:C:1128:LYS:HE2	1:C:1132:LYS:CE	2.41	0.50
1:A:104:ALA:O	1:A:107:LEU:HB3	2.11	0.50
1:A:208:ARG:O	1:A:212:ILE:HG12	2.12	0.50
1:A:70:LYS:HE3	1:A:117:GLY:O	2.11	0.49
2:B:527:PRO:CG	2:B:530:LEU:HD12	2.42	0.49
1:C:1226:ALA:O	1:C:1227:LEU:HB2	2.11	0.49
2:B:496:ASP:O	2:B:497:ILE:HB	2.11	0.49
1:C:1075:SER:O	1:C:1079:GLN:HG3	2.12	0.49
1:C:1162:ILE:HA	1:C:1167:TYR:CD1	2.48	0.49
1:C:1208:ARG:O	1:C:1212:ILE:HG12	2.12	0.49
1:C:1318:GLU:O	1:C:1318:GLU:OE1	2.31	0.48
1:A:167:TYR:CE2	1:A:169:PRO:HG3	2.47	0.48
2:B:521:LYS:CE	2:B:522:GLU:HG3	2.43	0.48
1:A:38:LEU:HD23	1:A:222:ILE:HB	1.95	0.48
1:A:186:GLU:OE2	1:A:188:HIS:CE1	2.66	0.48
2:D:1513:HIS:O	2:D:1514:ASP:HB2	2.14	0.48
1:C:1105:ARG:HD3	2:D:1530:LEU:O	2.13	0.48
1:C:1180:LYS:HG3	2:D:1517:GLY:HA3	1.94	0.48
1:A:255:ASN:OD1	1:A:312:LYS:HG2	2.12	0.48

Continued on next page...

Continued from previous page...

Atom-1	Atom-2	Interatomic distance (Å)	Clash overlap (Å)
1:A:230:TYR:O	1:A:286:CYS:HB2	2.13	0.48
1:A:127:ILE:HG22	1:A:159:LEU:HD11	1.96	0.48
1:A:81:ILE:O	1:A:85:ILE:HG12	2.15	0.47
1:C:1090:ARG:NH2	5:C:4113:HOH:O	2.48	0.47
2:B:496:ASP:C	2:B:498:GLU:N	2.67	0.46
1:A:62:SER:OG	1:A:65:GLU:HG3	2.14	0.46
1:C:1241:ASN:HD22	1:C:1244:HIS:H	1.62	0.46
1:A:212:ILE:O	1:A:216:GLU:HG3	2.16	0.46
1:A:206:SER:CB	1:A:210:LYS:HD3	2.45	0.46
1:A:34:VAL:HG12	1:A:36:LEU:HD13	1.98	0.46
1:A:206:SER:HB3	1:A:210:LYS:HD3	1.97	0.46
1:C:1069:TYR:O	1:C:1073:VAL:HG23	2.15	0.45
1:C:1313:ARG:O	1:C:1316:THR:N	2.49	0.45
1:C:1324:THR:HG22	1:C:1335:VAL:HG21	1.99	0.45
2:B:521:LYS:HE3	2:B:522:GLU:CG	2.47	0.45
1:C:1043:GLU:O	4:C:356:GDP:H5"	2.17	0.45
1:A:119:MET:HA	5:A:4139:HOH:O	2.17	0.45
1:C:1167:TYR:HA	5:C:4271:HOH:O	2.16	0.44
1:C:1213:HIS:HA	1:C:1216:GLU:CG	2.47	0.44
1:A:346:ASN:C	1:A:348:LEU:H	2.21	0.44
1:C:1043:GLU:OE2	1:C:1178:ARG:NH2	2.41	0.44
1:A:54:LYS:O	1:A:58:GLU:HB2	2.17	0.44
1:C:1230:TYR:O	1:C:1286:CYS:HB2	2.18	0.44
1:A:86:ARG:NH1	1:A:86:ARG:CG	2.80	0.44
2:B:520:ARG:HA	2:B:520:ARG:HD2	1.75	0.43
1:A:158:ASP:O	1:A:162:ILE:HG12	2.17	0.43
1:C:1226:ALA:O	1:C:1269:ASN:O	2.36	0.43
1:C:1342:VAL:HG22	1:C:1345:LYS:NZ	2.33	0.43
1:C:1096:GLY:HA3	1:C:1134:SER:OG	2.17	0.43
1:C:1213:HIS:HA	1:C:1216:GLU:HG2	2.01	0.43
1:A:240:MET:HG3	1:A:245:GLU:HG3	2.01	0.43
1:A:287:TYR:CE1	1:A:306:GLN:HG3	2.53	0.43
1:C:1171:GLN:NE2	1:C:1171:GLN:HA	2.33	0.42
1:A:265:ILE:HG12	1:A:339:VAL:HG13	2.01	0.42
1:C:1103:ASP:OD1	1:C:1129:ARG:NH1	2.52	0.42
1:C:1185:VAL:HG12	1:C:1186:GLU:N	2.34	0.42
1:C:1302:TYR:O	1:C:1306:GLN:HG2	2.20	0.42
1:A:32:ARG:HH11	1:A:194:LEU:HD21	1.84	0.42
1:A:215:PHE:O	1:A:218:VAL:HG12	2.19	0.42
1:C:1063:GLU:O	1:C:1067:LYS:HG3	2.19	0.42
1:A:255:ASN:CG	1:A:312:LYS:HG2	2.40	0.42

Continued on next page...

Continued from previous page...

Atom-1	Atom-2	Interatomic distance (Å)	Clash overlap (Å)
1:C:1128:LYS:HE3	5:C:4252:HOH:O	2.20	0.42
1:C:1270:LYS:HD3	1:C:1273:LEU:HD12	2.02	0.42
1:A:115:GLU:O	1:A:115:GLU:HG3	2.18	0.42
1:C:1065:GLU:O	1:C:1068:GLN:HB2	2.20	0.41
1:A:149:ASN:HB2	1:A:178:ARG:CZ	2.50	0.41
1:A:186:GLU:HG2	1:A:187:THR:N	2.35	0.41
2:D:1520:ARG:HG2	2:D:1523:ASP:OD2	2.19	0.41
2:D:1530:LEU:O	2:D:1531:GLN:C	2.59	0.41
1:C:1054:LYS:HA	1:C:1058:GLU:CG	2.51	0.41
1:A:144:ARG:HG2	5:A:4096:HOH:O	2.20	0.41
1:A:181:THR:HG21	5:A:4062:HOH:O	2.21	0.41
1:A:40:GLY:N	2:B:508:GLN:NE2	2.59	0.40
1:C:1143:SER:HA	1:C:1146:TYR:CE1	2.57	0.40
1:A:325:CYS:HA	4:A:355:GDP:O6	2.21	0.40
1:C:1241:ASN:ND2	1:C:1244:HIS:ND1	2.67	0.40
1:C:1035:LYS:CE	1:C:1218:VAL:HG12	2.51	0.40

There are no symmetry-related clashes.

5.3 Torsion angles [i](#)

5.3.1 Protein backbone [i](#)

In the following table, the Percentiles column shows the percent Ramachandran outliers of the chain as a percentile score with respect to all X-ray entries followed by that with respect to entries of similar resolution.

The Analysed column shows the number of residues for which the backbone conformation was analysed, and the total number of residues.

Mol	Chain	Analysed	Favoured	Allowed	Outliers	Percentiles	
1	A	318/325 (98%)	305 (96%)	12 (4%)	1 (0%)	46	50
1	C	316/325 (97%)	299 (95%)	14 (4%)	3 (1%)	21	19
2	B	34/36 (94%)	31 (91%)	2 (6%)	1 (3%)	6	2
2	D	34/36 (94%)	31 (91%)	3 (9%)	0	100	100
All	All	702/722 (97%)	666 (95%)	31 (4%)	5 (1%)	26	25

All (5) Ramachandran outliers are listed below:

Mol	Chain	Res	Type
1	A	202	GLY
1	C	1047	SER
1	C	1184	ILE
2	B	497	ILE
1	C	1032	ARG

5.3.2 Protein sidechains ⓘ

In the following table, the Percentiles column shows the percent sidechain outliers of the chain as a percentile score with respect to all X-ray entries followed by that with respect to entries of similar resolution.

The Analysed column shows the number of residues for which the sidechain conformation was analysed, and the total number of residues.

Mol	Chain	Analysed	Rotameric	Outliers	Percentiles	
1	A	276/281 (98%)	273 (99%)	3 (1%)	80	89
1	C	275/281 (98%)	267 (97%)	8 (3%)	50	62
2	B	32/32 (100%)	30 (94%)	2 (6%)	22	24
2	D	32/32 (100%)	32 (100%)	0	100	100
All	All	615/626 (98%)	602 (98%)	13 (2%)	61	74

All (13) residues with a non-rotameric sidechain are listed below:

Mol	Chain	Res	Type
1	A	32	ARG
1	A	261	ASP
1	A	293	SER
2	B	496	ASP
2	B	521	LYS
1	C	1032	ARG
1	C	1036	LEU
1	C	1038	LEU
1	C	1178	ARG
1	C	1241	ASN
1	C	1284	THR
1	C	1318	GLU
1	C	1347	ASN

Some sidechains can be flipped to improve hydrogen bonding and reduce clashes. All (14) such sidechains are listed below:

Mol	Chain	Res	Type
1	A	106	GLN
1	A	172	GLN
1	A	188	HIS
1	A	333	GLN
1	A	346	ASN
1	A	347	ASN
2	B	508	GLN
1	C	1106	GLN
1	C	1147	GLN
1	C	1171	GLN
1	C	1172	GLN
1	C	1241	ASN
1	C	1333	GLN
1	C	1347	ASN

5.3.3 RNA [i](#)

There are no RNA molecules in this entry.

5.4 Non-standard residues in protein, DNA, RNA chains [i](#)

There are no non-standard protein/DNA/RNA residues in this entry.

5.5 Carbohydrates [i](#)

There are no carbohydrates in this entry.

5.6 Ligand geometry [i](#)

Of 4 ligands modelled in this entry, 2 are monoatomic - leaving 2 for Mogul analysis.

In the following table, the Counts columns list the number of bonds (or angles) for which Mogul statistics could be retrieved, the number of bonds (or angles) that are observed in the model and the number of bonds (or angles) that are defined in the chemical component dictionary. The Link column lists molecule types, if any, to which the group is linked. The Z score for a bond length (or angle) is the number of standard deviations the observed value is removed from the expected value. A bond length (or angle) with $|Z| > 2$ is considered an outlier worth inspection. RMSZ is the root-mean-square of all Z scores of the bond lengths (or angles).

Mol	Type	Chain	Res	Link	Bond lengths			Bond angles		
					Counts	RMSZ	# $ Z > 2$	Counts	RMSZ	# $ Z > 2$
4	GDP	A	355	3	23,30,30	1.67	5 (21%)	30,47,47	2.51	10 (33%)

Mol	Type	Chain	Res	Link	Bond lengths			Bond angles		
					Counts	RMSZ	# Z > 2	Counts	RMSZ	# Z > 2
4	GDP	C	356	3	23,30,30	1.84	7 (30%)	30,47,47	2.51	9 (30%)

In the following table, the Chirals column lists the number of chiral outliers, the number of chiral centers analysed, the number of these observed in the model and the number defined in the chemical component dictionary. Similar counts are reported in the Torsion and Rings columns. '-' means no outliers of that kind were identified.

Mol	Type	Chain	Res	Link	Chirals	Torsions	Rings
4	GDP	A	355	3	-	0/12/32/32	0/3/3/3
4	GDP	C	356	3	-	0/12/32/32	0/3/3/3

All (12) bond length outliers are listed below:

Mol	Chain	Res	Type	Atoms	Z	Observed(Å)	Ideal(Å)
4	C	356	GDP	C8-N7	-3.36	1.28	1.34
4	A	355	GDP	C8-N7	-2.75	1.29	1.34
4	A	355	GDP	PA-O2A	-2.62	1.43	1.54
4	C	356	GDP	PA-O2A	-2.47	1.44	1.54
4	C	356	GDP	PB-O2B	-2.40	1.46	1.54
4	A	355	GDP	PB-O2B	-2.25	1.46	1.54
4	C	356	GDP	O4'-C1'	2.03	1.43	1.41
4	C	356	GDP	C4-N3	2.33	1.39	1.35
4	A	355	GDP	C2-N1	2.65	1.40	1.35
4	C	356	GDP	C2-N1	3.06	1.40	1.35
4	A	355	GDP	C6-N1	4.73	1.41	1.33
4	C	356	GDP	C6-N1	4.92	1.42	1.33

All (19) bond angle outliers are listed below:

Mol	Chain	Res	Type	Atoms	Z	Observed(°)	Ideal(°)
4	A	355	GDP	C5-C6-N1	-8.47	112.01	123.59
4	C	356	GDP	C5-C6-N1	-8.40	112.11	123.59
4	A	355	GDP	N3-C2-N1	-3.24	122.50	127.44
4	C	356	GDP	N3-C2-N1	-3.10	122.72	127.44
4	C	356	GDP	O4'-C1'-N9	-2.85	102.13	108.10
4	C	356	GDP	O4'-C4'-C5'	-2.35	100.93	109.32
4	A	355	GDP	O4'-C4'-C5'	-2.17	101.57	109.32
4	A	355	GDP	O4'-C1'-N9	-2.14	103.61	108.10
4	A	355	GDP	C6-C5-C4	-2.02	118.48	120.90
4	A	355	GDP	C4-C5-N7	2.01	111.33	109.48
4	C	356	GDP	O5'-C5'-C4'	2.08	116.77	109.12
4	A	355	GDP	O5'-C5'-C4'	2.13	116.97	109.12

Continued on next page...

Continued from previous page...

Mol	Chain	Res	Type	Atoms	Z	Observed(°)	Ideal(°)
4	C	356	GDP	C4-C5-N7	2.20	111.50	109.48
4	A	355	GDP	C2'-C3'-C4'	2.27	107.27	102.61
4	C	356	GDP	C2'-C3'-C4'	2.47	107.68	102.61
4	A	355	GDP	C4'-O4'-C1'	3.08	113.11	109.72
4	C	356	GDP	C4'-O4'-C1'	3.39	113.44	109.72
4	C	356	GDP	C6-N1-C2	6.82	125.40	115.94
4	A	355	GDP	C6-N1-C2	6.92	125.54	115.94

There are no chirality outliers.

There are no torsion outliers.

There are no ring outliers.

2 monomers are involved in 3 short contacts:

Mol	Chain	Res	Type	Clashes	Symm-Clashes
4	A	355	GDP	1	0
4	C	356	GDP	2	0

5.7 Other polymers [i](#)

There are no such residues in this entry.

5.8 Polymer linkage issues [i](#)

There are no chain breaks in this entry.

6 Fit of model and data [i](#)

6.1 Protein, DNA and RNA chains [i](#)

In the following table, the column labelled ‘#RSRZ> 2’ contains the number (and percentage) of RSRZ outliers, followed by percent RSRZ outliers for the chain as percentile scores relative to all X-ray entries and entries of similar resolution. The OWAB column contains the minimum, median, 95th percentile and maximum values of the occupancy-weighted average B-factor per residue. The column labelled ‘Q< 0.9’ lists the number of (and percentage) of residues with an average occupancy less than 0.9.

Mol	Chain	Analysed	<RSRZ>	#RSRZ>2	OWAB(Å ²)	Q<0.9
1	A	320/325 (98%)	0.37	24 (7%) 17 17	16, 37, 65, 77	0
1	C	318/325 (97%)	0.43	20 (6%) 23 23	17, 38, 71, 83	0
2	B	36/36 (100%)	1.05	7 (19%) 1 1	31, 54, 75, 80	0
2	D	36/36 (100%)	0.63	2 (5%) 28 27	29, 57, 71, 77	0
All	All	710/722 (98%)	0.45	53 (7%) 17 17	16, 39, 71, 83	0

All (53) RSRZ outliers are listed below:

Mol	Chain	Res	Type	RSRZ
1	C	1182	THR	6.6
1	A	181	THR	6.4
2	D	1531	GLN	6.0
1	C	1181	THR	5.8
1	A	30	GLY	5.5
1	C	1059	ALA	5.1
1	C	1315	ASP	4.8
2	B	497	ILE	4.6
2	B	496	ASP	4.4
1	C	1318	GLU	4.4
1	A	182	THR	4.3
1	C	1062	SER	3.8
1	A	202	GLY	3.8
1	C	1030	GLY	3.7
1	A	180	LYS	3.6
1	A	59	ALA	3.6
1	C	1096	GLY	3.3
1	A	188	HIS	3.3
1	A	31	ALA	3.2
1	C	1067	LYS	3.1
1	C	1205	ARG	3.1

Continued on next page...

Continued from previous page...

Mol	Chain	Res	Type	RSRZ
2	B	502	GLU	3.0
1	C	1061	TYR	3.0
1	C	1314	LYS	3.0
1	C	1031	ALA	3.0
1	C	1113	ALA	3.0
2	D	1511	GLY	2.9
2	B	499	GLY	2.7
1	A	166	ASN	2.7
1	C	1226	ALA	2.7
1	A	204	GLN	2.7
1	A	237	ASP	2.6
2	B	522	GLU	2.6
1	C	1183	GLY	2.6
2	B	498	GLU	2.6
1	C	1060	GLY	2.6
1	A	193	ASP	2.5
1	A	64	GLU	2.5
1	A	168	ILE	2.5
2	B	520	ARG	2.5
1	C	1063	GLU	2.5
1	A	239	GLU	2.4
1	A	348	LEU	2.3
1	C	1217	GLY	2.3
1	A	345	LYS	2.2
1	A	257	LYS	2.2
1	A	118	PHE	2.2
1	A	32	ARG	2.2
1	A	115	GLU	2.2
1	A	63	GLU	2.1
1	A	199	PHE	2.1
1	A	69	TYR	2.1
1	C	1313	ARG	2.1

6.2 Non-standard residues in protein, DNA, RNA chains [i](#)

There are no non-standard protein/DNA/RNA residues in this entry.

6.3 Carbohydrates [i](#)

There are no carbohydrates in this entry.

6.4 Ligands [i](#)

In the following table, the Atoms column lists the number of modelled atoms in the group and the number defined in the chemical component dictionary. LLDF column lists the quality of electron density of the group with respect to its neighbouring residues in protein, DNA or RNA chains. The B-factors column lists the minimum, median, 95th percentile and maximum values of B factors of atoms in the group. The column labelled 'Q< 0.9' lists the number of atoms with occupancy less than 0.9.

Mol	Type	Chain	Res	Atoms	RSCC	RSR	LLDF	B-factors(Å ²)	Q<0.9
4	GDP	A	355	28/28	0.96	0.17	1.16	20,26,36,40	0
4	GDP	C	356	28/28	0.95	0.17	1.02	18,22,37,39	0
3	MG	A	800	1/1	0.88	0.12	-0.63	51,51,51,51	0
3	MG	C	801	1/1	0.83	0.11	-	35,35,35,35	0

6.5 Other polymers [i](#)

There are no such residues in this entry.