



Full wwPDB X-ray Structure Validation Report ⓘ

Feb 1, 2016 – 11:20 AM GMT

PDB ID : 3OM1
Title : Crystal structure of the GluK5 (KA2) ATD dimer at 1.7 Angstrom Resolution
Authors : Kumar, J.; Mayer, M.L.
Deposited on : 2010-08-26
Resolution : 1.68 Å(reported)

This is a Full wwPDB X-ray Structure Validation Report for a publicly released PDB entry.
We welcome your comments at validation@mail.wwpdb.org
A user guide is available at
<http://wwpdb.org/validation/2016/XrayValidationReportHelp>
with specific help available everywhere you see the ⓘ symbol.

The following versions of software and data (see [references ⓘ](#)) were used in the production of this report:

MolProbity : 4.02b-467
Mogul : 1.7 (RC4), CSD as536be (2015)
Xtriage (Phenix) : 1.9-1692
EDS : rb-20026688
Percentile statistics : 20151230.v01 (using entries in the PDB archive December 30th 2015)
Refmac : 5.8.0135
CCP4 : 6.5.0
Ideal geometry (proteins) : Engh & Huber (2001)
Ideal geometry (DNA, RNA) : Parkinson et al. (1996)
Validation Pipeline (wwPDB-VP) : trunk26865

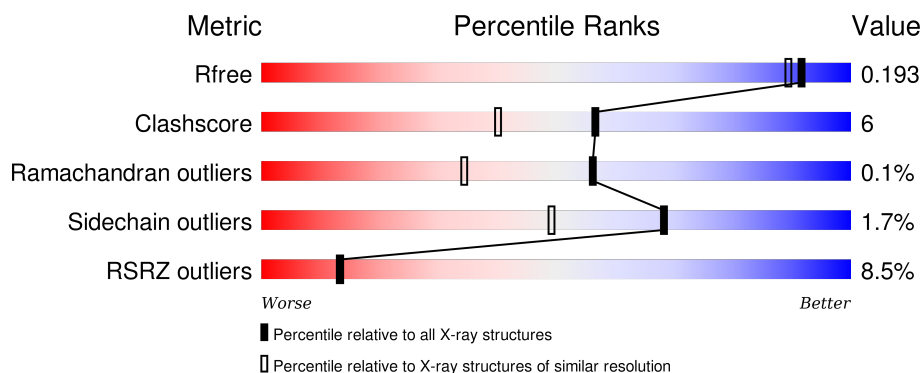
1 Overall quality at a glance

The following experimental techniques were used to determine the structure:

X-RAY DIFFRACTION

The reported resolution of this entry is 1.68 Å.

Percentile scores (ranging between 0-100) for global validation metrics of the entry are shown in the following graphic. The table shows the number of entries on which the scores are based.



Metric	Whole archive (#Entries)	Similar resolution (#Entries, resolution range(Å))
R_{free}	91344	4802 (1.70-1.66)
Clashscore	102246	5317 (1.70-1.66)
Ramachandran outliers	100387	5225 (1.70-1.66)
Sidechain outliers	100360	5224 (1.70-1.66)
RSRZ outliers	91569	4813 (1.70-1.66)

The table below summarises the geometric issues observed across the polymeric chains and their fit to the electron density. The red, orange, yellow and green segments on the lower bar indicate the fraction of residues that contain outliers for ≥ 3 , 2, 1 and 0 types of geometric quality criteria. A grey segment represents the fraction of residues that are not modelled. The numeric value for each fraction is indicated below the corresponding segment, with a dot representing fractions $\leq 5\%$. The upper red bar (where present) indicates the fraction of residues that have poor fit to the electron density. The numeric value is given above the bar.

Mol	Chain	Length	Quality of chain
1	A	393	<div> <div>9%</div> <div>81% 12% • 5%</div> </div>
1	B	393	<div> <div>7%</div> <div>82% 11% 7%</div> </div>

The following table lists non-polymeric compounds, carbohydrate monomers and non-standard residues in protein, DNA, RNA chains that are outliers for geometric or electron-density-fit criteria:

Mol	Type	Chain	Res	Chirality	Geometry	Clashes	Electron density
2	GOL	A	394	-	-	-	X
3	NAG	A	396	-	-	-	X
3	NAG	B	395	-	-	-	X
3	NAG	B	396	-	-	-	X
4	NAG	A	399	-	-	-	X
4	NAG	B	399	-	-	-	X

2 Entry composition [i](#)

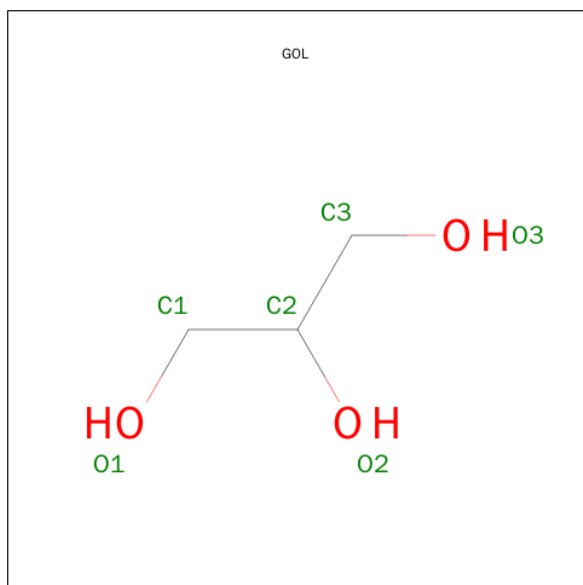
There are 6 unique types of molecules in this entry. The entry contains 12601 atoms, of which 5976 are hydrogens and 0 are deuteriums.

In the tables below, the ZeroOcc column contains the number of atoms modelled with zero occupancy, the AltConf column contains the number of residues with at least one atom in alternate conformation and the Trace column contains the number of residues modelled with at most 2 atoms.

- Molecule 1 is a protein called Glutamate receptor GluK5 (KA2).

Mol	Chain	Residues	Atoms						ZeroOcc	AltConf	Trace
1	A	373	Total	C	H	N	O	S	0	11	0
			5889	1857	2944	515	555	18			
1	B	367	Total	C	H	N	O	S	0	11	0
			5753	1829	2864	497	546	17			

- Molecule 2 is GLYCEROL (three-letter code: GOL) (formula: C₃H₈O₃).

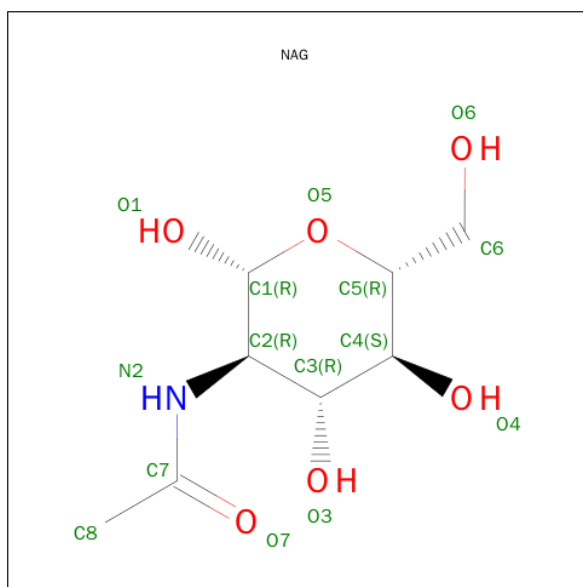


Mol	Chain	Residues	Atoms				ZeroOcc	AltConf
2	A	1	Total	C	H	O	0	0
			14	3	8	3		
2	B	1	Total	C	H	O	0	0
			14	3	8	3		

- Molecule 3 is a polymer of unknown type called SUGAR (2-MER).

Mol	Chain	Residues	Atoms					ZeroOcc	AltConf
3	A	2	Total	C	H	N	O	0	0
			52	16	24	2	10		
3	B	2	Total	C	H	N	O	0	0
			52	16	24	2	10		

- Molecule 4 is SUGAR (N-ACETYL-D-GLUCOSAMINE) (three-letter code: NAG) (formula: $C_8H_{15}NO_6$).



Mol	Chain	Residues	Atoms					ZeroOcc	AltConf
4	A	1	Total	C	H	N	O	0	0
			27	8	13	1	5		
4	A	1	Total	C	H	N	O	0	0
			27	8	13	1	5		
4	A	1	Total	C	H	N	O	0	0
			27	8	13	1	5		
4	A	1	Total	C	H	N	O	0	0
			27	8	13	1	5		
4	B	1	Total	C	H	N	O	0	0
			27	8	13	1	5		
4	B	1	Total	C	H	N	O	0	0
			27	8	13	1	5		
4	B	1	Total	C	H	N	O	0	0
			27	8	13	1	5		
4	B	1	Total	C	H	N	O	0	0
			27	8	13	1	5		

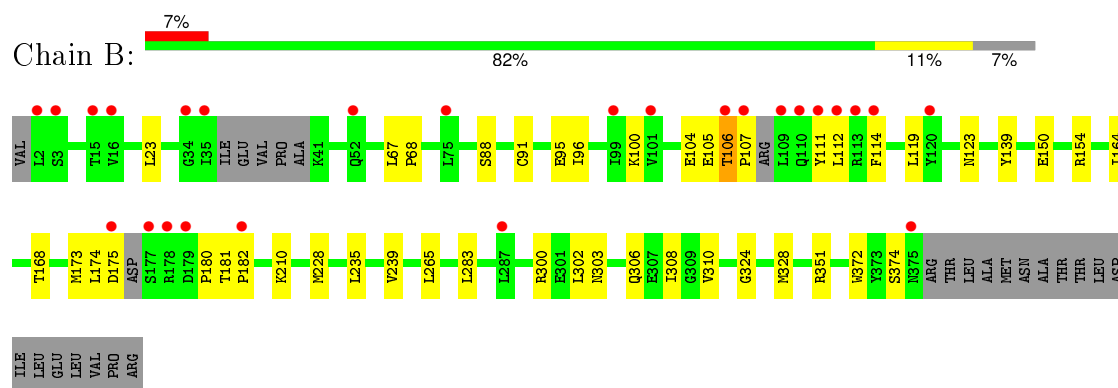
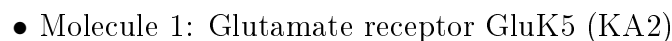
- Molecule 5 is SODIUM ION (three-letter code: NA) (formula: Na).

Mol	Chain	Residues	Atoms		ZeroOcc	AltConf
5	B	1	Total 1	Na 1	0	0
5	A	1	Total 1	Na 1	0	0

- Molecule 6 is water.

Mol	Chain	Residues	Atoms		ZeroOcc	AltConf
6	A	329	Total 329	O 329	0	4
6	B	280	Total 280	O 280	0	4

- Molecule 1: Glutamate receptor GluK5 (KA2)



4 Data and refinement statistics

Property	Value	Source
Space group	C 1 2 1	Depositor
Cell constants a, b, c, α , β , γ	109.34Å 65.64Å 113.77Å 90.00° 95.72° 90.00°	Depositor
Resolution (Å)	29.89 – 1.68 29.89 – 1.68	Depositor EDS
% Data completeness (in resolution range)	96.1 (29.89-1.68) 96.1 (29.89-1.68)	Depositor EDS
R_{merge}	0.07	Depositor
R_{sym}	(Not available)	Depositor
$\langle I/\sigma(I) \rangle$ ¹	2.79 (at 1.68Å)	Xtriage
Refinement program	PHENIX (phenix.refine: 1.6.2_432)	Depositor
R, R_{free}	0.168 , 0.196 0.166 , 0.193	Depositor DCC
R_{free} test set	4409 reflections (4.99%)	DCC
Wilson B-factor (Å ²)	22.5	Xtriage
Anisotropy	0.566	Xtriage
Bulk solvent k_{sol} (e/Å ³), B_{sol} (Å ²)	0.39 , 52.3	EDS
Estimated twinning fraction	No twinning to report.	Xtriage
L-test for twinning ²	$\langle L \rangle = 0.49$, $\langle L^2 \rangle = 0.32$	Xtriage
Outliers	0 of 88368 reflections	Xtriage
F_o, F_c correlation	0.97	EDS
Total number of atoms	12601	wwPDB-VP
Average B, all atoms (Å ²)	42.0	wwPDB-VP

Xtriage's analysis on translational NCS is as follows: *The largest off-origin peak in the Patterson function is 5.69% of the height of the origin peak. No significant pseudotranslation is detected.*

¹Intensities estimated from amplitudes.

²Theoretical values of $\langle |L| \rangle$, $\langle L^2 \rangle$ for acentric reflections are 0.5, 0.375 respectively for untwinned datasets, and 0.333, 0.2 for perfectly twinned datasets.

5 Model quality

5.1 Standard geometry

Bond lengths and bond angles in the following residue types are not validated in this section: GOL, NAG, NA

The Z score for a bond length (or angle) is the number of standard deviations the observed value is removed from the expected value. A bond length (or angle) with $|Z| > 5$ is considered an outlier worth inspection. RMSZ is the root-mean-square of all Z scores of the bond lengths (or angles).

Mol	Chain	Bond lengths		Bond angles	
		RMSZ	# Z >5	RMSZ	# Z >5
1	A	0.34	0/3024	0.51	0/4096
1	B	0.33	0/2974	0.52	0/4028
All	All	0.33	0/5998	0.51	0/8124

There are no bond length outliers.

There are no bond angle outliers.

There are no chirality outliers.

There are no planarity outliers.

5.2 Too-close contacts

In the following table, the Non-H and H(model) columns list the number of non-hydrogen atoms and hydrogen atoms in the chain respectively. The H(added) column lists the number of hydrogen atoms added and optimized by MolProbity. The Clashes column lists the number of clashes within the asymmetric unit, whereas Symm-Clashes lists symmetry related clashes.

Mol	Chain	Non-H	H(model)	H(added)	Clashes	Symm-Clashes
1	A	2945	2944	2941	39	0
1	B	2889	2864	2867	33	0
2	A	6	8	8	1	0
2	B	6	8	8	1	0
3	A	28	24	25	0	0
3	B	28	24	25	1	0
4	A	56	52	52	1	0
4	B	56	52	52	0	0
5	A	1	0	0	0	0
5	B	1	0	0	0	0
6	A	329	0	0	11	0

Continued on next page...

Continued from previous page...

Mol	Chain	Non-H	H(model)	H(added)	Clashes	Symm-Clashes
6	B	280	0	0	3	0
All	All	6625	5976	5978	73	0

The all-atom clashscore is defined as the number of clashes found per 1000 atoms (including hydrogen atoms). The all-atom clashscore for this structure is 6.

All (73) close contacts within the same asymmetric unit are listed below, sorted by their clash magnitude.

Atom-1	Atom-2	Interatomic distance (Å)	Clash overlap (Å)
1:B:105:GLU:HG2	1:B:154[B]:ARG:HD3	1.70	0.73
1:A:23:LEU:HD23	1:A:265:LEU:HD23	1.73	0.70
1:B:106:THR:H	1:B:107:PRO:HD3	1.60	0.65
1:A:106:THR:HB	1:A:150:GLU:OE2	1.98	0.64
1:B:228:MET:HB3	1:B:283:LEU:HD22	1.81	0.62
1:A:95:GLU:O	1:A:324:GLY:HA3	2.01	0.60
1:B:104:GLU:C	1:B:106:THR:HA	2.22	0.59
1:B:106:THR:N	1:B:107:PRO:HD3	2.18	0.58
1:A:235:LEU:HB2	1:A:239:VAL:HG23	1.85	0.58
1:B:114[B]:PHE:CZ	1:B:328:MET:HB3	2.39	0.57
4:A:398:NAG:H81	6:A:441:HOH:O	2.03	0.57
1:A:375:ASN:OD1	1:A:376:ARG:HG3	2.06	0.55
1:B:123:ASN:OD1	1:B:154[A]:ARG:HG3	2.07	0.55
1:A:157:GLU:HB2	6:A:522:HOH:O	2.06	0.55
1:A:235:LEU:CB	1:A:239:VAL:HG23	2.37	0.55
1:B:235:LEU:CB	1:B:239:VAL:HG23	2.38	0.54
1:A:17:CYS:SG	1:A:273[A]:CYS:HB3	2.47	0.53
1:B:106:THR:N	1:B:107:PRO:CD	2.72	0.52
1:B:95:GLU:O	1:B:324:GLY:HA3	2.10	0.51
1:A:303:ASN:HB2	1:A:308:ILE:HD12	1.93	0.51
1:B:302:LEU:HD11	1:B:306:GLN:CD	2.31	0.51
6:A:429:HOH:O	1:B:168:THR:HG22	2.12	0.50
1:A:70:GLY:O	1:A:310:VAL:HG11	2.12	0.50
1:B:111:TYR:CE2	1:B:112:LEU:HG	2.47	0.50
1:A:375:ASN:OD1	1:A:376:ARG:N	2.45	0.49
1:B:105:GLU:N	1:B:106:THR:HA	2.27	0.49
1:A:241:ASP:OD1	1:A:363:ARG:HD3	2.13	0.49
1:A:36:ILE:HD12	1:A:36:ILE:H	1.79	0.48
1:B:174:LEU:O	1:B:175:ASP:C	2.52	0.47
1:B:235:LEU:HB2	1:B:239:VAL:HG23	1.97	0.47
1:B:88:SER:OG	1:B:100:LYS:HE2	2.15	0.47
1:A:174:LEU:HD21	1:A:180:PRO:HB3	1.97	0.47

Continued on next page...

Continued from previous page...

Atom-1	Atom-2	Interatomic distance (Å)	Clash overlap (Å)
3:B:396:NAG:H82	6:B:484:HOH:O	2.16	0.46
1:A:107:PRO:HB3	1:B:150:GLU:OE2	2.16	0.46
1:A:56:GLN:NE2	6:B:431:HOH:O	2.49	0.46
1:B:372:TRP:CH2	1:B:374:SER:HA	2.51	0.46
1:A:91:CYS:HB3	1:A:96:ILE:O	2.16	0.45
1:A:127[A]:SER:OG	1:A:155:LEU:HA	2.16	0.45
1:B:181:THR:HB	1:B:182:PRO:HD3	1.96	0.45
1:B:67:LEU:N	1:B:68:PRO:CD	2.79	0.45
1:B:235:LEU:HB3	1:B:239:VAL:HG23	1.98	0.45
1:A:117:VAL:HG13	1:A:328:MET:HE1	2.00	0.44
1:B:303:ASN:HB2	1:B:308:ILE:HD12	1.99	0.44
1:B:23:LEU:HD23	1:B:265[B]:LEU:HD13	2.00	0.44
1:A:229:ASP:O	1:A:232:ILE:HG13	2.17	0.44
1:A:273[A]:CYS:SG	6:A:545:HOH:O	2.62	0.43
1:A:168:THR:HG22	6:B:427:HOH:O	2.17	0.43
1:B:180:PRO:HD2	1:B:210:LYS:HG3	2.00	0.43
1:A:302:LEU:HD13	1:A:330:TYR:CE1	2.52	0.43
1:A:105:GLU:CB	6:A:650:HOH:O	2.65	0.43
1:A:139:TYR:O	1:A:167:GLU:HG3	2.19	0.43
1:B:91:CYS:HB3	1:B:96:ILE:O	2.19	0.43
1:A:232:ILE:C	1:A:232:ILE:HD12	2.39	0.43
1:A:214:LEU:HD13	6:A:486:HOH:O	2.18	0.43
1:B:123:ASN:OD1	1:B:154[A]:ARG:CG	2.66	0.43
1:A:162:PHE:CE1	2:A:394:GOL:H32	2.53	0.43
1:B:106:THR:O	1:B:107:PRO:C	2.57	0.42
1:B:119:LEU:HA	1:B:351:ARG:HD3	2.01	0.42
1:A:157:GLU:CB	6:A:522:HOH:O	2.66	0.42
1:A:81:PRO:HD2	6:A:706:HOH:O	2.17	0.42
1:A:258:TYR:HB3	1:A:259:PRO:HD3	2.01	0.42
1:B:106:THR:H	1:B:107:PRO:CD	2.29	0.42
1:A:372:TRP:CH2	1:A:374:SER:HA	2.55	0.42
1:A:235:LEU:HB2	1:A:239:VAL:CG2	2.50	0.42
1:A:110:GLN:HG2	6:A:727:HOH:O	2.19	0.42
1:B:139:TYR:HD1	2:B:394:GOL:H11	1.84	0.41
1:B:123:ASN:CG	1:B:154[A]:ARG:HG3	2.40	0.41
1:A:267:MET:HG2	1:A:270:ARG:NH1	2.35	0.41
1:A:17:CYS:N	6:A:545:HOH:O	2.53	0.41
1:A:108:ARG:NH1	1:A:109:LEU:H	2.18	0.41
1:A:212:SER:HB2	1:A:238:ILE:HG23	2.03	0.41
1:B:164:ILE:O	1:B:164:ILE:HG22	2.21	0.41
1:A:173:MET:HG2	6:A:622:HOH:O	2.21	0.40

There are no symmetry-related clashes.

5.3 Torsion angles [i](#)

5.3.1 Protein backbone [i](#)

In the following table, the Percentiles column shows the percent Ramachandran outliers of the chain as a percentile score with respect to all X-ray entries followed by that with respect to entries of similar resolution.

The Analysed column shows the number of residues for which the backbone conformation was analysed, and the total number of residues.

Mol	Chain	Analysed	Favoured	Allowed	Outliers	Percentiles	
1	A	380/393 (97%)	372 (98%)	8 (2%)	0	100	100
1	B	370/393 (94%)	362 (98%)	7 (2%)	1 (0%)	46	25
All	All	750/786 (95%)	734 (98%)	15 (2%)	1 (0%)	56	34

All (1) Ramachandran outliers are listed below:

Mol	Chain	Res	Type
1	B	106	THR

5.3.2 Protein sidechains [i](#)

In the following table, the Percentiles column shows the percent sidechain outliers of the chain as a percentile score with respect to all X-ray entries followed by that with respect to entries of similar resolution.

The Analysed column shows the number of residues for which the sidechain conformation was analysed, and the total number of residues.

Mol	Chain	Analysed	Rotameric	Outliers	Percentiles	
1	A	329/346 (95%)	320 (97%)	9 (3%)	52	28
1	B	323/346 (93%)	320 (99%)	3 (1%)	84	75
All	All	652/692 (94%)	640 (98%)	12 (2%)	68	47

All (12) residues with a non-rotameric sidechain are listed below:

Mol	Chain	Res	Type
1	A	17	CYS
1	A	138	ASN

Continued on next page...

Continued from previous page...

Mol	Chain	Res	Type
1	A	150	GLU
1	A	173	MET
1	A	214	LEU
1	A	229	ASP
1	A	273[A]	CYS
1	A	273[B]	CYS
1	A	367	ARG
1	B	173	MET
1	B	300	ARG
1	B	310	VAL

Some sidechains can be flipped to improve hydrogen bonding and reduce clashes. All (3) such sidechains are listed below:

Mol	Chain	Res	Type
1	A	52	GLN
1	A	272	ASN
1	B	14	GLN

5.3.3 RNA ⓘ

There are no RNA molecules in this entry.

5.4 Non-standard residues in protein, DNA, RNA chains ⓘ

There are no non-standard protein/DNA/RNA residues in this entry.

5.5 Carbohydrates ⓘ

4 carbohydrates are modelled in this entry.

In the following table, the Counts columns list the number of bonds (or angles) for which Mogul statistics could be retrieved, the number of bonds (or angles) that are observed in the model and the number of bonds (or angles) that are defined in the chemical component dictionary. The Link column lists molecule types, if any, to which the group is linked. The Z score for a bond length (or angle) is the number of standard deviations the observed value is removed from the expected value. A bond length (or angle) with $|Z| > 2$ is considered an outlier worth inspection. RMSZ is the root-mean-square of all Z scores of the bond lengths (or angles).

Mol	Type	Chain	Res	Link	Bond lengths			Bond angles		
					Counts	RMSZ	$\# Z > 2$	Counts	RMSZ	$\# Z > 2$
3	NAG	A	395	3	14,14,15	0.58	0	15,19,21	1.57	3 (20%)

Mol	Type	Chain	Res	Link	Bond lengths			Bond angles		
					Counts	RMSZ	# Z > 2	Counts	RMSZ	# Z > 2
3	NAG	A	396	1,3	14,14,15	0.47	0	15,19,21	1.23	1 (6%)
3	NAG	B	395	3	14,14,15	0.51	0	15,19,21	0.85	0
3	NAG	B	396	1,3	14,14,15	0.62	0	15,19,21	0.92	1 (6%)

In the following table, the Chirals column lists the number of chiral outliers, the number of chiral centers analysed, the number of these observed in the model and the number defined in the chemical component dictionary. Similar counts are reported in the Torsion and Rings columns. '-' means no outliers of that kind were identified.

Mol	Type	Chain	Res	Link	Chirals	Torsions	Rings
3	NAG	A	395	3	-	0/6/23/26	0/1/1/1
3	NAG	A	396	1,3	-	0/6/23/26	0/1/1/1
3	NAG	B	395	3	-	0/6/23/26	0/1/1/1
3	NAG	B	396	1,3	-	0/6/23/26	0/1/1/1

There are no bond length outliers.

All (5) bond angle outliers are listed below:

Mol	Chain	Res	Type	Atoms	Z	Observed(°)	Ideal(°)
3	A	395	NAG	C2-N2-C7	-2.11	120.33	123.04
3	B	396	NAG	C4-C3-C2	2.27	114.76	111.23
3	A	396	NAG	C1-O5-C5	2.76	115.75	112.25
3	A	395	NAG	C1-O5-C5	2.88	115.90	112.25
3	A	395	NAG	C3-C4-C5	4.27	117.64	110.20

There are no chirality outliers.

There are no torsion outliers.

There are no ring outliers.

1 monomer is involved in 1 short contact:

Mol	Chain	Res	Type	Clashes	Symm-Clashes
3	B	396	NAG	1	0

5.6 Ligand geometry ⓘ

Of 12 ligands modelled in this entry, 2 are monoatomic - leaving 10 for Mogul analysis.

In the following table, the Counts columns list the number of bonds (or angles) for which Mogul statistics could be retrieved, the number of bonds (or angles) that are observed in the model and the number of bonds (or angles) that are defined in the chemical component dictionary. The Link

column lists molecule types, if any, to which the group is linked. The Z score for a bond length (or angle) is the number of standard deviations the observed value is removed from the expected value. A bond length (or angle) with $|Z| > 2$ is considered an outlier worth inspection. RMSZ is the root-mean-square of all Z scores of the bond lengths (or angles).

Mol	Type	Chain	Res	Link	Bond lengths			Bond angles		
					Counts	RMSZ	# Z > 2	Counts	RMSZ	# Z > 2
2	GOL	A	394	-	5,5,5	0.34	0	5,5,5	0.33	0
4	NAG	A	397	1	14,14,15	0.64	0	15,19,21	0.57	0
4	NAG	A	398	1	14,14,15	0.65	0	15,19,21	0.67	0
4	NAG	A	399	1	14,14,15	0.53	0	15,19,21	1.26	2 (13%)
4	NAG	A	400	1	14,14,15	0.61	0	15,19,21	0.92	1 (6%)
2	GOL	B	394	-	5,5,5	0.37	0	5,5,5	0.16	0
4	NAG	B	397	1	14,14,15	0.59	0	15,19,21	0.64	0
4	NAG	B	398	1	14,14,15	0.48	0	15,19,21	0.93	1 (6%)
4	NAG	B	399	1	14,14,15	0.50	0	15,19,21	1.22	3 (20%)
4	NAG	B	400	1	14,14,15	0.62	0	15,19,21	0.89	0

In the following table, the Chirals column lists the number of chiral outliers, the number of chiral centers analysed, the number of these observed in the model and the number defined in the chemical component dictionary. Similar counts are reported in the Torsion and Rings columns. '-' means no outliers of that kind were identified.

Mol	Type	Chain	Res	Link	Chirals	Torsions	Rings
2	GOL	A	394	-	-	0/4/4/4	0/0/0/0
4	NAG	A	397	1	-	0/6/23/26	0/1/1/1
4	NAG	A	398	1	-	0/6/23/26	0/1/1/1
4	NAG	A	399	1	-	0/6/23/26	0/1/1/1
4	NAG	A	400	1	-	0/6/23/26	0/1/1/1
2	GOL	B	394	-	-	0/4/4/4	0/0/0/0
4	NAG	B	397	1	-	0/6/23/26	0/1/1/1
4	NAG	B	398	1	-	0/6/23/26	0/1/1/1
4	NAG	B	399	1	-	0/6/23/26	0/1/1/1
4	NAG	B	400	1	-	0/6/23/26	0/1/1/1

There are no bond length outliers.

All (7) bond angle outliers are listed below:

Mol	Chain	Res	Type	Atoms	Z	Observed(°)	Ideal(°)
4	B	399	NAG	C2-N2-C7	-2.41	119.94	123.04
4	B	399	NAG	C4-C3-C2	-2.08	107.99	111.23
4	B	398	NAG	C1-O5-C5	2.03	114.82	112.25
4	A	400	NAG	C4-C3-C2	2.28	114.77	111.23

Continued on next page...

Continued from previous page...

Mol	Chain	Res	Type	Atoms	Z	Observed(°)	Ideal(°)
4	A	399	NAG	C4-C3-C2	2.35	114.88	111.23
4	A	399	NAG	C3-C4-C5	2.62	114.76	110.20
4	B	399	NAG	C1-O5-C5	2.83	115.84	112.25

There are no chirality outliers.

There are no torsion outliers.

There are no ring outliers.

3 monomers are involved in 3 short contacts:

Mol	Chain	Res	Type	Clashes	Symm-Clashes
2	A	394	GOL	1	0
4	A	398	NAG	1	0
2	B	394	GOL	1	0

5.7 Other polymers [i](#)

There are no such residues in this entry.

5.8 Polymer linkage issues [i](#)

There are no chain breaks in this entry.

6 Fit of model and data ⓘ

6.1 Protein, DNA and RNA chains ⓘ

In the following table, the column labelled ‘#RSRZ> 2’ contains the number (and percentage) of RSRZ outliers, followed by percent RSRZ outliers for the chain as percentile scores relative to all X-ray entries and entries of similar resolution. The OWAB column contains the minimum, median, 95th percentile and maximum values of the occupancy-weighted average B-factor per residue. The column labelled ‘Q< 0.9’ lists the number of (and percentage) of residues with an average occupancy less than 0.9.

Mol	Chain	Analysed	<RSRZ>	#RSRZ>2	OWAB(Å ²)	Q<0.9
1	A	373/393 (94%)	0.46	37 (9%) 9 9	17, 30, 81, 174	0
1	B	367/393 (93%)	0.24	26 (7%) 19 19	17, 31, 79, 126	0
All	All	740/786 (94%)	0.35	63 (8%) 13 13	17, 31, 80, 174	0

All (63) RSRZ outliers are listed below:

Mol	Chain	Res	Type	RSRZ
1	A	36	ILE	12.6
1	A	275	ALA	12.5
1	A	276	SER	8.8
1	A	17	CYS	8.4
1	A	274[A]	GLU	7.8
1	B	111	TYR	7.8
1	A	38	VAL	7.4
1	B	35	ILE	7.3
1	A	273[A]	CYS	6.7
1	A	16	VAL	6.5
1	A	376	ARG	6.1
1	B	112	LEU	5.6
1	A	39	PRO	5.6
1	B	114[A]	PHE	5.3
1	A	271	GLU	4.9
1	A	15	THR	4.8
1	A	3	SER	4.7
1	B	177	SER	4.1
1	A	35	ILE	4.0
1	B	106	THR	4.0
1	B	113	ARG	3.9
1	A	178	ARG	3.9
1	A	270	ARG	3.6
1	A	277	THR	3.4

Continued on next page...

Continued from previous page...

Mol	Chain	Res	Type	RSRZ
1	A	176	ASP	3.4
1	A	239	VAL	3.3
1	B	34	GLY	3.1
1	B	16	VAL	3.1
1	A	269	TRP	3.1
1	A	267	MET	3.1
1	A	37	GLU	3.1
1	B	15	THR	3.1
1	A	40	ALA	2.9
1	A	54	ASP	2.9
1	B	375	ASN	2.9
1	B	2	LEU	2.8
1	B	110	GLN	2.8
1	A	272	ASN	2.7
1	A	294	VAL	2.7
1	A	99	ILE	2.6
1	A	373	TYR	2.6
1	B	3	SER	2.5
1	A	53	ARG	2.5
1	A	34	GLY	2.5
1	B	120	TYR	2.4
1	B	107	PRO	2.4
1	A	308	ILE	2.4
1	B	175	ASP	2.3
1	B	287	LEU	2.3
1	A	310	VAL	2.3
1	B	101	VAL	2.3
1	B	99	ILE	2.2
1	A	108	ARG	2.2
1	A	375	ASN	2.2
1	B	178	ARG	2.2
1	B	179	ASP	2.1
1	A	114	PHE	2.1
1	B	52	GLN	2.1
1	B	109	LEU	2.1
1	B	75	LEU	2.1
1	B	182	PRO	2.0
1	A	295	VAL	2.0
1	A	309	GLY	2.0

6.2 Non-standard residues in protein, DNA, RNA chains ⓘ

There are no non-standard protein/DNA/RNA residues in this entry.

6.3 Carbohydrates ⓘ

In the following table, the Atoms column lists the number of modelled atoms in the group and the number defined in the chemical component dictionary. LLDF column lists the quality of electron density of the group with respect to its neighbouring residues in protein, DNA or RNA chains. The B-factors column lists the minimum, median, 95th percentile and maximum values of B factors of atoms in the group. The column labelled 'Q< 0.9' lists the number of atoms with occupancy less than 0.9.

Mol	Type	Chain	Res	Atoms	RSCC	RSR	LLDF	B-factors(Å ²)	Q<0.9
3	NAG	A	396	14/15	0.91	0.17	3.49	37,66,87,94	0
3	NAG	B	396	14/15	0.84	0.17	2.48	39,72,120,120	0
3	NAG	B	395	14/15	0.72	0.37	2.18	73,98,128,138	0
3	NAG	A	395	14/15	0.68	0.38	-	107,135,162,167	0

6.4 Ligands ⓘ

In the following table, the Atoms column lists the number of modelled atoms in the group and the number defined in the chemical component dictionary. LLDF column lists the quality of electron density of the group with respect to its neighbouring residues in protein, DNA or RNA chains. The B-factors column lists the minimum, median, 95th percentile and maximum values of B factors of atoms in the group. The column labelled 'Q< 0.9' lists the number of atoms with occupancy less than 0.9.

Mol	Type	Chain	Res	Atoms	RSCC	RSR	LLDF	B-factors(Å ²)	Q<0.9
2	GOL	A	394	6/6	0.69	0.19	4.34	39,51,54,65	0
4	NAG	B	399	14/15	0.75	0.26	2.93	59,80,110,115	0
4	NAG	A	399	14/15	0.70	0.25	2.40	42,100,155,164	0
2	GOL	B	394	6/6	0.66	0.18	1.92	42,70,81,84	0
4	NAG	A	398	14/15	0.69	0.23	1.55	52,68,89,90	0
4	NAG	A	400	14/15	0.85	0.23	1.01	31,54,81,81	0
4	NAG	B	400	14/15	0.90	0.16	0.71	41,60,119,119	0
4	NAG	B	397	14/15	0.95	0.12	0.29	26,37,55,57	0
4	NAG	B	398	14/15	0.93	0.09	-0.01	23,40,59,64	0
5	NA	A	401	1/1	0.98	0.08	-0.40	36,36,36,36	0
4	NAG	A	397	14/15	0.96	0.07	-0.67	18,30,60,60	0
5	NA	B	401	1/1	0.96	0.04	-1.45	33,33,33,33	0

6.5 Other polymers [i](#)

There are no such residues in this entry.