



# Full wwPDB X-ray Structure Validation Report ⓘ

Feb 1, 2016 – 05:02 AM GMT

PDB ID : 2P7Z  
Title : Estrogen Related Receptor Gamma in complex with 4-hydroxy-tamoxifen  
Authors : Abad, M.C.  
Deposited on : 2007-03-21  
Resolution : 2.50 Å(reported)

This is a Full wwPDB X-ray Structure Validation Report for a publicly released PDB entry.  
We welcome your comments at [validation@mail.wwpdb.org](mailto:validation@mail.wwpdb.org)  
A user guide is available at  
<http://wwpdb.org/validation/2016/XrayValidationReportHelp>  
with specific help available everywhere you see the ⓘ symbol.

---

The following versions of software and data (see [references ⓘ](#)) were used in the production of this report:

MolProbity : 4.02b-467  
Mogul : 1.7 (RC4), CSD as536be (2015)  
Xtriage (Phenix) : 1.9-1692  
EDS : rb-20026688  
Percentile statistics : 20151230.v01 (using entries in the PDB archive December 30th 2015)  
Refmac : 5.8.0135  
CCP4 : 6.5.0  
Ideal geometry (proteins) : Engh & Huber (2001)  
Ideal geometry (DNA, RNA) : Parkinson et al. (1996)  
Validation Pipeline (wwPDB-VP) : trunk26865

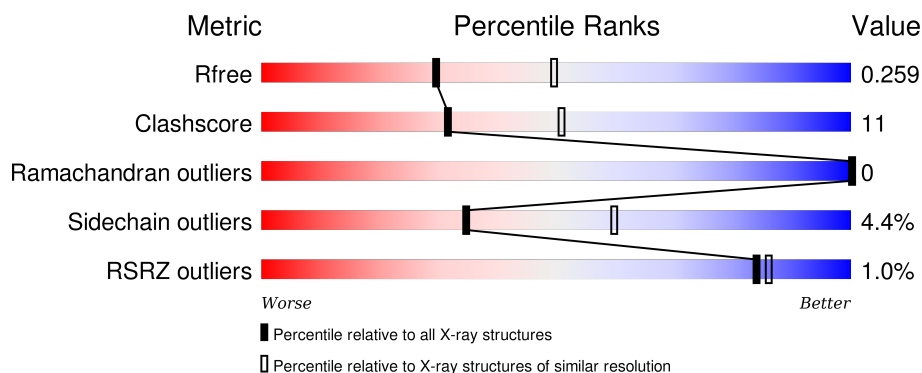
# 1 Overall quality at a glance

The following experimental techniques were used to determine the structure:

## *X-RAY DIFFRACTION*

The reported resolution of this entry is 2.50 Å.

Percentile scores (ranging between 0-100) for global validation metrics of the entry are shown in the following graphic. The table shows the number of entries on which the scores are based.



Metric	Whole archive (#Entries)	Similar resolution (#Entries, resolution range(Å))
$R_{free}$	91344	3553 (2.50-2.50)
Clashscore	102246	4242 (2.50-2.50)
Ramachandran outliers	100387	4156 (2.50-2.50)
Sidechain outliers	100360	4158 (2.50-2.50)
RSRZ outliers	91569	3562 (2.50-2.50)

The table below summarises the geometric issues observed across the polymeric chains and their fit to the electron density. The red, orange, yellow and green segments on the lower bar indicate the fraction of residues that contain outliers for  $\geq 3$ , 2, 1 and 0 types of geometric quality criteria. A grey segment represents the fraction of residues that are not modelled. The numeric value for each fraction is indicated below the corresponding segment, with a dot representing fractions  $\leq 5\%$ . The upper red bar (where present) indicates the fraction of residues that have poor fit to the electron density. The numeric value is given above the bar.

Mol	Chain	Length	Quality of chain
1	A	251	

## 2 Entry composition

There are 3 unique types of molecules in this entry. The entry contains 1773 atoms, of which 0 are hydrogens and 0 are deuteriums.

In the tables below, the ZeroOcc column contains the number of atoms modelled with zero occupancy, the AltConf column contains the number of residues with at least one atom in alternate conformation and the Trace column contains the number of residues modelled with at most 2 atoms.

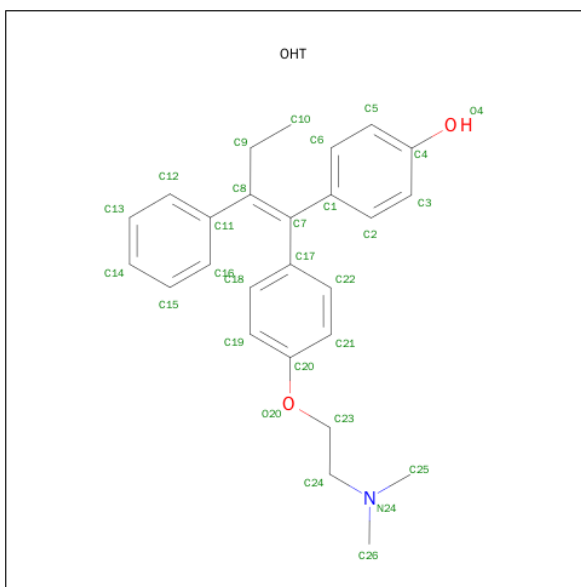
- Molecule 1 is a protein called Estrogen-related receptor gamma.

Mol	Chain	Residues	Atoms					ZeroOcc	AltConf	Trace
			Total	C	N	O	S			
1	A	207	1641	1049	266	316	10	0	0	0

There are 21 discrepancies between the modelled and reference sequences:

Chain	Residue	Modelled	Actual	Comment	Reference
A	208	MET	-	EXPRESSION TAG	UNP P62508
A	209	GLY	-	EXPRESSION TAG	UNP P62508
A	210	SER	-	EXPRESSION TAG	UNP P62508
A	211	SER	-	EXPRESSION TAG	UNP P62508
A	212	HIS	-	EXPRESSION TAG	UNP P62508
A	213	HIS	-	EXPRESSION TAG	UNP P62508
A	214	HIS	-	EXPRESSION TAG	UNP P62508
A	215	HIS	-	EXPRESSION TAG	UNP P62508
A	216	HIS	-	EXPRESSION TAG	UNP P62508
A	217	HIS	-	EXPRESSION TAG	UNP P62508
A	218	SER	-	EXPRESSION TAG	UNP P62508
A	219	SER	-	EXPRESSION TAG	UNP P62508
A	220	GLY	-	EXPRESSION TAG	UNP P62508
A	221	LEU	-	EXPRESSION TAG	UNP P62508
A	222	VAL	-	EXPRESSION TAG	UNP P62508
A	223	PRO	-	EXPRESSION TAG	UNP P62508
A	224	ARG	-	EXPRESSION TAG	UNP P62508
A	225	GLY	-	EXPRESSION TAG	UNP P62508
A	226	SER	-	EXPRESSION TAG	UNP P62508
A	227	HIS	-	EXPRESSION TAG	UNP P62508
A	228	MET	-	EXPRESSION TAG	UNP P62508

- Molecule 2 is 4-HYDROXYTAMOXIFEN (three-letter code: OHT) (formula: C<sub>26</sub>H<sub>29</sub>NO<sub>2</sub>).



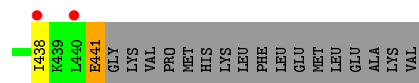
Mol	Chain	Residues	Atoms				ZeroOcc	AltConf
2	A	1	Total	C	N	O	0	0
			29	26	1	2		

- Molecule 3 is water.

Mol	Chain	Residues	Atoms		ZeroOcc	AltConf
3	A	103	Total	O	0	0
			103	103		

**i**

- Molecule 1: Estrogen-related receptor gamma



## 4 Data and refinement statistics

Property	Value	Source
Space group	P 41 21 2	Depositor
Cell constants a, b, c, $\alpha$ , $\beta$ , $\gamma$	63.99Å 63.99Å 137.95Å 90.00° 90.00° 90.00°	Depositor
Resolution (Å)	58.00 – 2.50 58.05 – 2.50	Depositor EDS
% Data completeness (in resolution range)	92.9 (58.00-2.50) 92.3 (58.05-2.50)	Depositor EDS
$R_{merge}$	0.09	Depositor
$R_{sym}$	(Not available)	Depositor
$\langle I/\sigma(I) \rangle$ <sup>1</sup>	3.62 (at 2.51Å)	Xtriage
Refinement program	CNS	Depositor
R, $R_{free}$	0.213 , 0.263 0.211 , 0.259	Depositor DCC
$R_{free}$ test set	972 reflections (10.00%)	DCC
Wilson B-factor (Å <sup>2</sup> )	20.0	Xtriage
Anisotropy	0.100	Xtriage
Bulk solvent $k_{sol}$ (e/Å <sup>3</sup> ), $B_{sol}$ (Å <sup>2</sup> )	0.34 , 40.0	EDS
Estimated twinning fraction	No twinning to report.	Xtriage
L-test for twinning <sup>2</sup>	$\langle  L  \rangle = 0.47$ , $\langle L^2 \rangle = 0.29$	Xtriage
Outliers	0 of 9739 reflections	Xtriage
$F_o, F_c$ correlation	0.91	EDS
Total number of atoms	1773	wwPDB-VP
Average B, all atoms (Å <sup>2</sup> )	21.0	wwPDB-VP

Xtriage's analysis on translational NCS is as follows: *The largest off-origin peak in the Patterson function is 6.95% of the height of the origin peak. No significant pseudotranslation is detected.*

<sup>1</sup>Intensities estimated from amplitudes.

<sup>2</sup>Theoretical values of  $\langle |L| \rangle$ ,  $\langle L^2 \rangle$  for acentric reflections are 0.5, 0.375 respectively for untwinned datasets, and 0.333, 0.2 for perfectly twinned datasets.

## 5 Model quality [i](#)

### 5.1 Standard geometry [i](#)

Bond lengths and bond angles in the following residue types are not validated in this section: OHT

The Z score for a bond length (or angle) is the number of standard deviations the observed value is removed from the expected value. A bond length (or angle) with  $|Z| > 5$  is considered an outlier worth inspection. RMSZ is the root-mean-square of all Z scores of the bond lengths (or angles).

Mol	Chain	Bond lengths		Bond angles	
		RMSZ	$\# Z  > 5$	RMSZ	$\# Z  > 5$
1	A	0.39	0/1668	0.64	1/2258 (0.0%)

There are no bond length outliers.

All (1) bond angle outliers are listed below:

Mol	Chain	Res	Type	Atoms	Z	Observed( $^{\circ}$ )	Ideal( $^{\circ}$ )
1	A	441	GLU	N-CA-C	12.89	145.79	111.00

There are no chirality outliers.

There are no planarity outliers.

### 5.2 Too-close contacts [i](#)

In the following table, the Non-H and H(model) columns list the number of non-hydrogen atoms and hydrogen atoms in the chain respectively. The H(added) column lists the number of hydrogen atoms added and optimized by MolProbity. The Clashes column lists the number of clashes within the asymmetric unit, whereas Symm-Clashes lists symmetry related clashes.

Mol	Chain	Non-H	H(model)	H(added)	Clashes	Symm-Clashes
1	A	1641	0	1668	35	0
2	A	29	0	29	6	0
3	A	103	0	0	2	0
All	All	1773	0	1697	36	0

The all-atom clashscore is defined as the number of clashes found per 1000 atoms (including hydrogen atoms). The all-atom clashscore for this structure is 11.

All (36) close contacts within the same asymmetric unit are listed below, sorted by their clash magnitude.

Atom-1	Atom-2	Interatomic distance (Å)	Clash overlap (Å)
1:A:435:PHE:HB2	2:A:201:OHT:H15	1.51	0.92
1:A:304:ALA:HB2	1:A:377:SER:HB3	1.70	0.73
1:A:425:ARG:O	1:A:429:THR:HG23	1.91	0.71
1:A:310:ILE:O	1:A:314:VAL:HG23	1.97	0.64
1:A:261:ASP:O	1:A:265:LEU:HG	1.97	0.64
1:A:314:VAL:HG13	1:A:353:VAL:HG22	1.81	0.62
1:A:273:ASP:OD2	2:A:201:OHT:H263	1.99	0.62
1:A:305:TRP:HZ3	2:A:201:OHT:H21	1.66	0.61
1:A:403:GLU:OE1	1:A:413:ARG:HD3	2.03	0.57
1:A:246:PRO:HB3	1:A:278:VAL:HG11	1.88	0.55
1:A:235:ASN:N	3:A:480:HOH:O	2.40	0.55
1:A:438:ILE:O	1:A:438:ILE:HG22	2.11	0.50
1:A:356:TYR:CG	1:A:361:LEU:HD22	2.47	0.50
1:A:246:PRO:HB3	1:A:278:VAL:CG1	2.43	0.47
1:A:428:SER:O	1:A:432:VAL:HG23	2.13	0.47
1:A:312:GLY:O	1:A:316:ARG:HG3	2.15	0.47
1:A:434:HIS:O	1:A:438:ILE:HG13	2.15	0.47
1:A:388:VAL:O	1:A:392:GLN:HG3	2.16	0.46
1:A:314:VAL:HG13	1:A:353:VAL:CG2	2.46	0.45
1:A:402:TYR:CZ	1:A:406:GLN:HG3	2.51	0.45
1:A:351:GLN:HG2	1:A:423:LEU:HD21	1.99	0.45
1:A:435:PHE:HB2	2:A:201:OHT:C15	2.34	0.44
1:A:339:LEU:O	1:A:339:LEU:HD22	2.17	0.44
1:A:248:LYS:HD3	1:A:328:ASP:OD2	2.18	0.44
1:A:336:GLN:HB3	3:A:557:HOH:O	2.17	0.44
1:A:390:LYS:O	1:A:394:VAL:HG13	2.18	0.44
1:A:271:LEU:HG	1:A:275:GLU:OE2	2.18	0.43
1:A:318:LEU:HD23	1:A:353:VAL:HG13	2.00	0.43
1:A:356:TYR:CD1	1:A:361:LEU:HD22	2.54	0.42
1:A:296:ASP:OD2	1:A:383:GLU:HG3	2.20	0.42
2:A:201:OHT:H252	2:A:201:OHT:H232	1.77	0.41
1:A:257:VAL:HA	1:A:258:PRO:HD3	1.99	0.41
1:A:382:ILE:HG21	1:A:388:VAL:HG21	2.02	0.41
1:A:365:GLU:O	1:A:369:LEU:HB2	2.21	0.41
1:A:307:GLU:OE1	1:A:425:ARG:NE	2.52	0.40
1:A:273:ASP:OD2	2:A:201:OHT:H252	2.22	0.40

There are no symmetry-related clashes.



## 5.3 Torsion angles

### 5.3.1 Protein backbone

In the following table, the Percentiles column shows the percent Ramachandran outliers of the chain as a percentile score with respect to all X-ray entries followed by that with respect to entries of similar resolution.

The Analysed column shows the number of residues for which the backbone conformation was analysed, and the total number of residues.

Mol	Chain	Analysed	Favoured	Allowed	Outliers	Percentiles	
1	A	205/251 (82%)	201 (98%)	4 (2%)	0	100	100

There are no Ramachandran outliers to report.

### 5.3.2 Protein sidechains

In the following table, the Percentiles column shows the percent sidechain outliers of the chain as a percentile score with respect to all X-ray entries followed by that with respect to entries of similar resolution.

The Analysed column shows the number of residues for which the sidechain conformation was analysed, and the total number of residues.

Mol	Chain	Analysed	Rotameric	Outliers	Percentiles	
1	A	183/221 (83%)	175 (96%)	8 (4%)	35	60

All (8) residues with a non-rotameric sidechain are listed below:

Mol	Chain	Res	Type
1	A	294	LEU
1	A	311	LEU
1	A	339	LEU
1	A	345	LEU
1	A	358	SER
1	A	369	LEU
1	A	433	GLN
1	A	441	GLU

Some sidechains can be flipped to improve hydrogen bonding and reduce clashes. All (4) such sidechains are listed below:

Mol	Chain	Res	Type
1	A	347	ASN
1	A	392	GLN
1	A	400	GLN
1	A	437	ASN

### 5.3.3 RNA [i](#)

There are no RNA molecules in this entry.

## 5.4 Non-standard residues in protein, DNA, RNA chains [i](#)

There are no non-standard protein/DNA/RNA residues in this entry.

## 5.5 Carbohydrates [i](#)

There are no carbohydrates in this entry.

## 5.6 Ligand geometry [i](#)

1 ligand is modelled in this entry.

In the following table, the Counts columns list the number of bonds (or angles) for which Mogul statistics could be retrieved, the number of bonds (or angles) that are observed in the model and the number of bonds (or angles) that are defined in the chemical component dictionary. The Link column lists molecule types, if any, to which the group is linked. The Z score for a bond length (or angle) is the number of standard deviations the observed value is removed from the expected value. A bond length (or angle) with  $|Z| > 2$  is considered an outlier worth inspection. RMSZ is the root-mean-square of all Z scores of the bond lengths (or angles).

Mol	Type	Chain	Res	Link	Bond lengths			Bond angles		
					Counts	RMSZ	$\# Z  > 2$	Counts	RMSZ	$\# Z  > 2$
2	OHT	A	201	-	31,31,31	1.93	13 (41%)	41,41,41	1.08	5 (12%)

In the following table, the Chirals column lists the number of chiral outliers, the number of chiral centers analysed, the number of these observed in the model and the number defined in the chemical component dictionary. Similar counts are reported in the Torsion and Rings columns. '-' means no outliers of that kind were identified.

Mol	Type	Chain	Res	Link	Chirals	Torsions	Rings
2	OHT	A	201	-	-	0/24/24/24	0/3/3/3

All (13) bond length outliers are listed below:

Mol	Chain	Res	Type	Atoms	Z	Observed(Å)	Ideal(Å)
2	A	201	OHT	O20-C20	-2.21	1.32	1.37
2	A	201	OHT	C21-C20	2.06	1.42	1.38
2	A	201	OHT	C6-C5	2.31	1.42	1.38
2	A	201	OHT	C9-C8	2.37	1.57	1.52
2	A	201	OHT	C19-C20	2.39	1.43	1.38
2	A	201	OHT	C19-C18	2.41	1.43	1.38
2	A	201	OHT	C7-C8	2.46	1.41	1.34
2	A	201	OHT	C3-C2	2.57	1.43	1.38
2	A	201	OHT	C12-C11	2.67	1.43	1.39
2	A	201	OHT	C2-C1	2.82	1.44	1.39
2	A	201	OHT	C18-C17	2.84	1.44	1.39
2	A	201	OHT	C6-C1	2.95	1.44	1.39
2	A	201	OHT	C1-C7	3.05	1.54	1.49

All (5) bond angle outliers are listed below:

Mol	Chain	Res	Type	Atoms	Z	Observed(°)	Ideal(°)
2	A	201	OHT	C9-C8-C11	-2.65	110.53	114.39
2	A	201	OHT	C22-C17-C7	-2.40	117.42	120.92
2	A	201	OHT	C17-C7-C8	-2.36	119.67	122.84
2	A	201	OHT	C9-C8-C7	2.53	126.34	123.47
2	A	201	OHT	C23-O20-C20	2.54	124.15	117.91

There are no chirality outliers.

There are no torsion outliers.

There are no ring outliers.

1 monomer is involved in 6 short contacts:

Mol	Chain	Res	Type	Clashes	Symm-Clashes
2	A	201	OHT	6	0

## 5.7 Other polymers [i](#)

There are no such residues in this entry.

## 5.8 Polymer linkage issues [i](#)

There are no chain breaks in this entry.

## 6 Fit of model and data [i](#)

### 6.1 Protein, DNA and RNA chains [i](#)

In the following table, the column labelled ‘#RSRZ> 2’ contains the number (and percentage) of RSRZ outliers, followed by percent RSRZ outliers for the chain as percentile scores relative to all X-ray entries and entries of similar resolution. The OWAB column contains the minimum, median, 95<sup>th</sup> percentile and maximum values of the occupancy-weighted average B-factor per residue. The column labelled ‘Q< 0.9’ lists the number of (and percentage) of residues with an average occupancy less than 0.9.

Mol	Chain	Analysed	<RSRZ>	#RSRZ>2	OWAB(Å <sup>2</sup> )	Q<0.9
1	A	207/251 (82%)	-0.31	2 (0%) 84 86	8, 19, 35, 74	0

All (2) RSRZ outliers are listed below:

Mol	Chain	Res	Type	RSRZ
1	A	440	LEU	2.4
1	A	438	ILE	2.0

### 6.2 Non-standard residues in protein, DNA, RNA chains [i](#)

There are no non-standard protein/DNA/RNA residues in this entry.

### 6.3 Carbohydrates [i](#)

There are no carbohydrates in this entry.

### 6.4 Ligands [i](#)

In the following table, the Atoms column lists the number of modelled atoms in the group and the number defined in the chemical component dictionary. LLDF column lists the quality of electron density of the group with respect to its neighbouring residues in protein, DNA or RNA chains. The B-factors column lists the minimum, median, 95<sup>th</sup> percentile and maximum values of B factors of atoms in the group. The column labelled ‘Q< 0.9’ lists the number of atoms with occupancy less than 0.9.

Mol	Type	Chain	Res	Atoms	RSCC	RSR	LLDF	B-factors(Å <sup>2</sup> )	Q<0.9
2	OHT	A	201	29/29	0.91	0.21	0.86	24,32,46,48	0

## 6.5 Other polymers [i](#)

There are no such residues in this entry.