



Full wwPDB X-ray Structure Validation Report ⓘ

Feb 1, 2016 – 05:11 AM GMT

PDB ID : 2PSJ
Title : Crystal Structures of the Luciferase and Green Fluorescent Protein from Renilla Reniformis
Authors : Loening, A.M.; Fenn, T.D.; Gambhir, S.S.
Deposited on : 2007-05-06
Resolution : 1.80 Å(reported)

This is a Full wwPDB X-ray Structure Validation Report for a publicly released PDB entry.
We welcome your comments at validation@mail.wwpdb.org
A user guide is available at
<http://wwpdb.org/validation/2016/XrayValidationReportHelp>
with specific help available everywhere you see the ⓘ symbol.

The following versions of software and data (see [references ⓘ](#)) were used in the production of this report:

MolProbity : 4.02b-467
Mogul : 1.7 (RC4), CSD as536be (2015)
Xtriage (Phenix) : 1.9-1692
EDS : rb-20026688
Percentile statistics : 20151230.v01 (using entries in the PDB archive December 30th 2015)
Refmac : 5.8.0135
CCP4 : 6.5.0
Ideal geometry (proteins) : Engh & Huber (2001)
Ideal geometry (DNA, RNA) : Parkinson et al. (1996)
Validation Pipeline (wwPDB-VP) : trunk26865

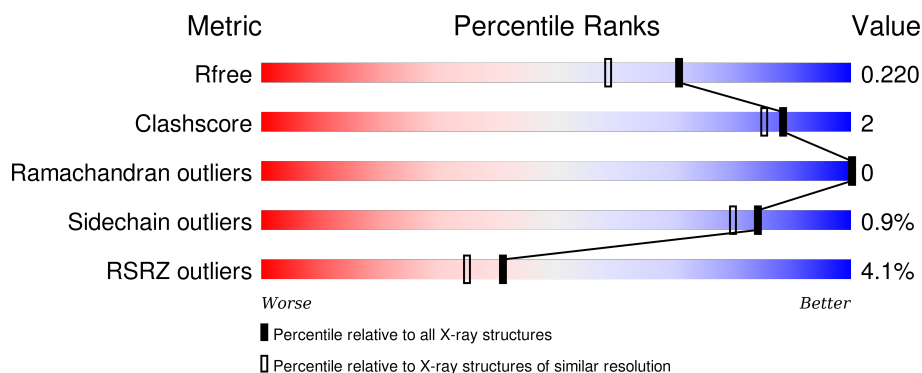
1 Overall quality at a glance

The following experimental techniques were used to determine the structure:

X-RAY DIFFRACTION


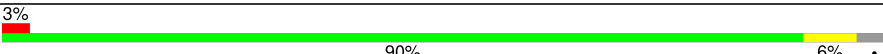
The reported resolution of this entry is 1.80 Å.

Percentile scores (ranging between 0-100) for global validation metrics of the entry are shown in the following graphic. The table shows the number of entries on which the scores are based.



Metric	Whole archive (#Entries)	Similar resolution (#Entries, resolution range(Å))
R_{free}	91344	4533 (1.80-1.80)
Clashscore	102246	5383 (1.80-1.80)
Ramachandran outliers	100387	5320 (1.80-1.80)
Sidechain outliers	100360	5319 (1.80-1.80)
RSRZ outliers	91569	4547 (1.80-1.80)

The table below summarises the geometric issues observed across the polymeric chains and their fit to the electron density. The red, orange, yellow and green segments on the lower bar indicate the fraction of residues that contain outliers for ≥ 3 , 2, 1 and 0 types of geometric quality criteria. A grey segment represents the fraction of residues that are not modelled. The numeric value for each fraction is indicated below the corresponding segment, with a dot representing fractions $\leq 5\%$. The upper red bar (where present) indicates the fraction of residues that have poor fit to the electron density. The numeric value is given above the bar.

Mol	Chain	Length	Quality of chain
1	A	319	
1	B	319	

2 Entry composition

There are 3 unique types of molecules in this entry. The entry contains 5521 atoms, of which 0 are hydrogens and 0 are deuteriums.

In the tables below, the ZeroOcc column contains the number of atoms modelled with zero occupancy, the AltConf column contains the number of residues with at least one atom in alternate conformation and the Trace column contains the number of residues modelled with at most 2 atoms.

- Molecule 1 is a protein called Renilla-luciferin 2-monooxygenase.

Mol	Chain	Residues	Atoms					ZeroOcc	AltConf	Trace
1	A	306	Total	C	N	O	S	0	0	0
			2503	1621	420	453	9			
1	B	306	Total	C	N	O	S	0	0	0
			2503	1621	420	453	9			

There are 34 discrepancies between the modelled and reference sequences:

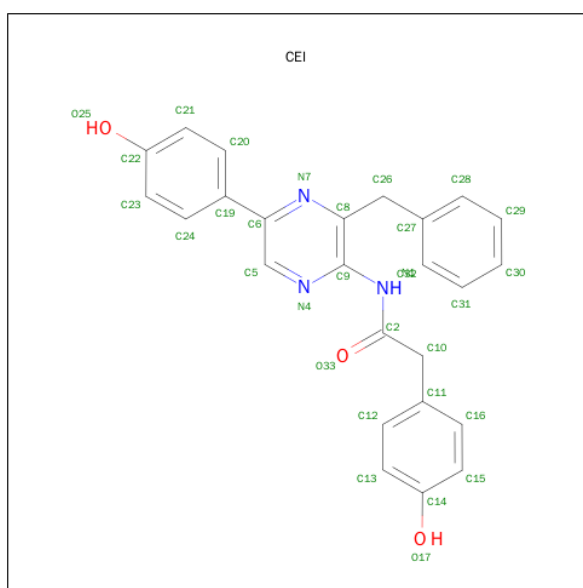
Chain	Residue	Modelled	Actual	Comment	Reference
A	2	ALA	THR	ENGINEERED	UNP P27652
A	55	THR	ALA	ENGINEERED	UNP P27652
A	124	ALA	CYS	ENGINEERED	UNP P27652
A	130	ALA	SER	ENGINEERED	UNP P27652
A	136	ARG	LYS	ENGINEERED	UNP P27652
A	143	MET	ALA	ENGINEERED	UNP P27652
A	185	VAL	MET	ENGINEERED	UNP P27652
A	253	LEU	MET	ENGINEERED	UNP P27652
A	287	LEU	SER	ENGINEERED	UNP P27652
A	312	VAL	-	EXPRESSION TAG	UNP P27652
A	313	ASP	-	EXPRESSION TAG	UNP P27652
A	314	HIS	-	EXPRESSION TAG	UNP P27652
A	315	HIS	-	EXPRESSION TAG	UNP P27652
A	316	HIS	-	EXPRESSION TAG	UNP P27652
A	317	HIS	-	EXPRESSION TAG	UNP P27652
A	318	HIS	-	EXPRESSION TAG	UNP P27652
A	319	HIS	-	EXPRESSION TAG	UNP P27652
B	2	ALA	THR	ENGINEERED	UNP P27652
B	55	THR	ALA	ENGINEERED	UNP P27652
B	124	ALA	CYS	ENGINEERED	UNP P27652
B	130	ALA	SER	ENGINEERED	UNP P27652
B	136	ARG	LYS	ENGINEERED	UNP P27652
B	143	MET	ALA	ENGINEERED	UNP P27652
B	185	VAL	MET	ENGINEERED	UNP P27652
B	253	LEU	MET	ENGINEERED	UNP P27652

Continued on next page...

Continued from previous page...

Chain	Residue	Modelled	Actual	Comment	Reference
B	287	LEU	SER	ENGINEERED	UNP P27652
B	312	VAL	-	EXPRESSION TAG	UNP P27652
B	313	ASP	-	EXPRESSION TAG	UNP P27652
B	314	HIS	-	EXPRESSION TAG	UNP P27652
B	315	HIS	-	EXPRESSION TAG	UNP P27652
B	316	HIS	-	EXPRESSION TAG	UNP P27652
B	317	HIS	-	EXPRESSION TAG	UNP P27652
B	318	HIS	-	EXPRESSION TAG	UNP P27652
B	319	HIS	-	EXPRESSION TAG	UNP P27652

- Molecule 2 is N-[3-BENZYL-5-(4-HYDROXYPHENYL)PYRAZIN-2-YL]-2-(4-HYDROXY PHENYL)ACETAMIDE (three-letter code: CEI) (formula: C₂₅H₂₁N₃O₃).

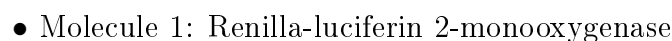


Mol	Chain	Residues	Atoms				ZeroOcc	AltConf
2	A	1	Total	C	N	O	0	0
			31	25	3	3		
2	B	1	Total	C	N	O	0	0
			31	25	3	3		

- Molecule 3 is water.

Mol	Chain	Residues	Atoms		ZeroOcc	AltConf
3	A	228	Total	O	0	0
			228	228		
3	B	225	Total	O	0	0
			225	225		

- Molecule 1: Renilla-luciferin 2-monooxygenase



4 Data and refinement statistics

Property	Value	Source
Space group	P 1 21 1	Depositor
Cell constants a, b, c, α , β , γ	51.33Å 74.47Å 89.25Å 90.00° 103.45° 90.00°	Depositor
Resolution (Å)	50.00 – 1.80 37.50 – 1.69	Depositor EDS
% Data completeness (in resolution range)	96.4 (50.00-1.80) 92.7 (37.50-1.69)	Depositor EDS
R_{merge}	(Not available)	Depositor
R_{sym}	(Not available)	Depositor
$\langle I/\sigma(I) \rangle$ ¹	1.76 (at 1.69Å)	Xtriage
Refinement program	REFMAC 5.2.0019	Depositor
R, R_{free}	0.188 , 0.216 0.192 , 0.220	Depositor DCC
R_{free} test set	2916 reflections (5.24%)	DCC
Wilson B-factor (Å ²)	21.7	Xtriage
Anisotropy	0.322	Xtriage
Bulk solvent k_{sol} (e/Å ³), B_{sol} (Å ²)	0.37 , 48.7	EDS
Estimated twinning fraction	No twinning to report.	Xtriage
L-test for twinning ²	$\langle L \rangle = 0.49$, $\langle L^2 \rangle = 0.33$	Xtriage
Outliers	0 of 67545 reflections	Xtriage
F_o, F_c correlation	0.95	EDS
Total number of atoms	5521	wwPDB-VP
Average B, all atoms (Å ²)	27.0	wwPDB-VP

Xtriage's analysis on translational NCS is as follows: *The largest off-origin peak in the Patterson function is 9.12% of the height of the origin peak. No significant pseudotranslation is detected.*

¹Intensities estimated from amplitudes.

²Theoretical values of $\langle |L| \rangle$, $\langle L^2 \rangle$ for acentric reflections are 0.5, 0.375 respectively for untwinned datasets, and 0.333, 0.2 for perfectly twinned datasets.

5 Model quality

5.1 Standard geometry

Bond lengths and bond angles in the following residue types are not validated in this section: CEI

The Z score for a bond length (or angle) is the number of standard deviations the observed value is removed from the expected value. A bond length (or angle) with $|Z| > 5$ is considered an outlier worth inspection. RMSZ is the root-mean-square of all Z scores of the bond lengths (or angles).

Mol	Chain	Bond lengths		Bond angles	
		RMSZ	$\# Z > 5$	RMSZ	$\# Z > 5$
1	A	0.43	0/2572	0.59	1/3479 (0.0%)
1	B	0.42	0/2572	0.59	0/3479
All	All	0.43	0/5144	0.59	1/6958 (0.0%)

There are no bond length outliers.

All (1) bond angle outliers are listed below:

Mol	Chain	Res	Type	Atoms	Z	Observed(°)	Ideal(°)
1	A	287	LEU	CA-CB-CG	5.07	126.96	115.30

There are no chirality outliers.

There are no planarity outliers.

5.2 Too-close contacts

In the following table, the Non-H and H(model) columns list the number of non-hydrogen atoms and hydrogen atoms in the chain respectively. The H(added) column lists the number of hydrogen atoms added and optimized by MolProbity. The Clashes column lists the number of clashes within the asymmetric unit, whereas Symm-Clashes lists symmetry related clashes.

Mol	Chain	Non-H	H(model)	H(added)	Clashes	Symm-Clashes
1	A	2503	0	2472	13	0
1	B	2503	0	2472	12	0
2	A	31	0	19	0	0
2	B	31	0	19	0	0
3	A	228	0	0	1	0
3	B	225	0	0	1	0
All	All	5521	0	4982	25	0

The all-atom clashscore is defined as the number of clashes found per 1000 atoms (including hydrogen atoms). The all-atom clashscore for this structure is 2.

All (25) close contacts within the same asymmetric unit are listed below, sorted by their clash magnitude.

Atom-1	Atom-2	Interatomic distance (Å)	Clash overlap (Å)
1:B:223:ILE:HD12	1:B:224:PRO:HD2	1.51	0.91
1:A:223:ILE:HD12	1:A:224:PRO:HD2	1.66	0.75
1:A:191:MET:SD	1:A:282:LYS:NZ	2.66	0.67
1:A:135:ASP:OD2	3:A:669:HOH:O	2.16	0.63
1:A:150:ILE:HB	1:A:225:LEU:HD23	1.81	0.62
1:B:150:ILE:HB	1:B:225:LEU:HD23	1.92	0.52
1:A:287:LEU:H	1:A:287:LEU:HD12	1.75	0.52
1:B:67:ILE:O	1:B:70:VAL:HG22	2.10	0.52
1:B:142:HIS:HD2	1:B:145:SER:OG	1.95	0.49
1:A:142:HIS:HD2	1:A:145:SER:OG	1.96	0.48
1:B:95:LEU:HD12	3:B:706:HOH:O	2.13	0.48
1:A:308:LYS:O	1:A:309:ASN:HB2	2.14	0.48
1:B:308:LYS:O	1:B:309:ASN:HB2	2.13	0.47
1:B:64:VAL:HG12	1:B:65:PRO:HD3	1.97	0.46
1:A:189:LYS:HE3	1:A:261:PHE:CD1	2.51	0.46
1:B:64:VAL:CG1	1:B:65:PRO:HD3	2.45	0.46
1:B:287:LEU:HD12	1:B:287:LEU:H	1.81	0.46
1:A:306:VAL:O	1:A:308:LYS:O	2.35	0.44
1:A:64:VAL:N	1:A:65:PRO:CD	2.81	0.43
1:B:53:ASN:OD1	1:B:216:THR:HA	2.19	0.42
1:B:64:VAL:N	1:B:65:PRO:CD	2.83	0.42
1:A:53:ASN:OD1	1:A:216:THR:HA	2.20	0.41
1:B:255:ILE:HD13	1:B:295:MET:HG3	2.03	0.41
1:A:186:LEU:HD12	1:A:286:PHE:CE2	2.56	0.40
1:A:189:LYS:HB3	1:A:285:HIS:HB3	2.04	0.40

There are no symmetry-related clashes.

5.3 Torsion angles

5.3.1 Protein backbone

In the following table, the Percentiles column shows the percent Ramachandran outliers of the chain as a percentile score with respect to all X-ray entries followed by that with respect to entries of similar resolution.

The Analysed column shows the number of residues for which the backbone conformation was

analysed, and the total number of residues.

Mol	Chain	Analysed	Favoured	Allowed	Outliers	Percentiles	
1	A	302/319 (95%)	291 (96%)	11 (4%)	0	100	100
1	B	302/319 (95%)	291 (96%)	11 (4%)	0	100	100
All	All	604/638 (95%)	582 (96%)	22 (4%)	0	100	100

There are no Ramachandran outliers to report.

5.3.2 Protein sidechains ⓘ

In the following table, the Percentiles column shows the percent sidechain outliers of the chain as a percentile score with respect to all X-ray entries followed by that with respect to entries of similar resolution.

The Analysed column shows the number of residues for which the sidechain conformation was analysed, and the total number of residues.

Mol	Chain	Analysed	Rotameric	Outliers	Percentiles	
1	A	270/282 (96%)	267 (99%)	3 (1%)	80	74
1	B	270/282 (96%)	268 (99%)	2 (1%)	88	86
All	All	540/564 (96%)	535 (99%)	5 (1%)	84	80

All (5) residues with a non-rotameric sidechain are listed below:

Mol	Chain	Res	Type
1	A	240	TYR
1	A	257	SER
1	A	287	LEU
1	B	240	TYR
1	B	287	LEU

Some sidechains can be flipped to improve hydrogen bonding and reduce clashes. All (5) such sidechains are listed below:

Mol	Chain	Res	Type
1	A	28	ASN
1	A	142	HIS
1	B	28	ASN
1	B	42	HIS
1	B	142	HIS

5.3.3 RNA ⓘ

There are no RNA molecules in this entry.

5.4 Non-standard residues in protein, DNA, RNA chains ⓘ

There are no non-standard protein/DNA/RNA residues in this entry.

5.5 Carbohydrates ⓘ

There are no carbohydrates in this entry.

5.6 Ligand geometry ⓘ

2 ligands are modelled in this entry.

In the following table, the Counts columns list the number of bonds (or angles) for which Mogul statistics could be retrieved, the number of bonds (or angles) that are observed in the model and the number of bonds (or angles) that are defined in the chemical component dictionary. The Link column lists molecule types, if any, to which the group is linked. The Z score for a bond length (or angle) is the number of standard deviations the observed value is removed from the expected value. A bond length (or angle) with $|Z| > 2$ is considered an outlier worth inspection. RMSZ is the root-mean-square of all Z scores of the bond lengths (or angles).

Mol	Type	Chain	Res	Link	Bond lengths			Bond angles		
					Counts	RMSZ	$\# Z > 2$	Counts	RMSZ	$\# Z > 2$
2	CEI	A	501	-	34,34,34	0.54	0	41,46,46	1.24	3 (7%)
2	CEI	B	502	-	34,34,34	0.58	0	41,46,46	1.20	3 (7%)

In the following table, the Chirals column lists the number of chiral outliers, the number of chiral centers analysed, the number of these observed in the model and the number defined in the chemical component dictionary. Similar counts are reported in the Torsion and Rings columns. '-' means no outliers of that kind were identified.

Mol	Type	Chain	Res	Link	Chirals	Torsions	Rings
2	CEI	A	501	-	-	0/16/16/16	0/4/4/4
2	CEI	B	502	-	-	0/16/16/16	0/4/4/4

There are no bond length outliers.

All (6) bond angle outliers are listed below:

Mol	Chain	Res	Type	Atoms	Z	Observed($^{\circ}$)	Ideal($^{\circ}$)
2	A	501	CEI	C9-N1-C2	-5.29	119.27	128.12
2	B	502	CEI	C9-N1-C2	-4.88	119.97	128.12
2	A	501	CEI	C19-C6-N7	2.49	119.44	116.13
2	B	502	CEI	C19-C6-N7	2.56	119.53	116.13
2	A	501	CEI	C6-N7-C8	2.74	120.27	118.11
2	B	502	CEI	C6-N7-C8	3.06	120.53	118.11

There are no chirality outliers.

There are no torsion outliers.

There are no ring outliers.

No monomer is involved in short contacts.

5.7 Other polymers [i](#)

There are no such residues in this entry.

5.8 Polymer linkage issues [i](#)

There are no chain breaks in this entry.

6 Fit of model and data ⓘ

6.1 Protein, DNA and RNA chains ⓘ

In the following table, the column labelled ‘#RSRZ > 2’ contains the number (and percentage) of RSRZ outliers, followed by percent RSRZ outliers for the chain as percentile scores relative to all X-ray entries and entries of similar resolution. The OWAB column contains the minimum, median, 95th percentile and maximum values of the occupancy-weighted average B-factor per residue. The column labelled ‘Q < 0.9’ lists the number of (and percentage) of residues with an average occupancy less than 0.9.

Mol	Chain	Analysed	<RSRZ>	#RSRZ>2	OWAB(Å ²)	Q<0.9
1	A	306/319 (95%)	0.25	14 (4%) 36 30	21, 26, 32, 41	0
1	B	306/319 (95%)	0.14	11 (3%) 46 40	21, 25, 32, 41	0
All	All	612/638 (95%)	0.20	25 (4%) 41 35	21, 25, 32, 41	0

All (25) RSRZ outliers are listed below:

Mol	Chain	Res	Type	RSRZ
1	A	152	SER	6.0
1	A	157	PRO	5.4
1	A	156	TRP	4.7
1	A	158	ASP	4.5
1	B	152	SER	4.3
1	A	159	ILE	3.9
1	A	155	GLU	3.6
1	A	160	GLU	3.4
1	B	157	PRO	3.4
1	B	308	LYS	3.4
1	A	308	LYS	3.2
1	A	161	GLU	3.2
1	A	227	LYS	3.0
1	B	151	GLU	2.9
1	B	158	ASP	2.9
1	A	163	ILE	2.6
1	B	9	GLU	2.6
1	B	155	GLU	2.5
1	A	151	GLU	2.4
1	B	169	GLU	2.4
1	B	160	GLU	2.3
1	A	88	GLY	2.3
1	B	310	GLU	2.2
1	A	169	GLU	2.2

Continued on next page...

Continued from previous page...

Mol	Chain	Res	Type	RSRZ
1	B	309	ASN	2.1

6.2 Non-standard residues in protein, DNA, RNA chains [i](#)

There are no non-standard protein/DNA/RNA residues in this entry.

6.3 Carbohydrates [i](#)

There are no carbohydrates in this entry.

6.4 Ligands [i](#)

In the following table, the Atoms column lists the number of modelled atoms in the group and the number defined in the chemical component dictionary. LLDF column lists the quality of electron density of the group with respect to its neighbouring residues in protein, DNA or RNA chains. The B-factors column lists the minimum, median, 95th percentile and maximum values of B factors of atoms in the group. The column labelled 'Q< 0.9' lists the number of atoms with occupancy less than 0.9.

Mol	Type	Chain	Res	Atoms	RSCC	RSR	LLDF	B-factors(Å ²)	Q<0.9
2	CEI	A	501	31/31	0.74	0.23	1.42	41,42,42,43	0
2	CEI	B	502	31/31	0.81	0.16	0.82	37,39,41,41	0

6.5 Other polymers [i](#)

There are no such residues in this entry.