



Full wwPDB X-ray Structure Validation Report ⓘ

Feb 1, 2016 – 11:45 AM GMT

PDB ID : 3PX2
Title : Structure of TylM1 from Streptomyces fradiae H123N mutant in complex with
SAH and dTDP-Quip3N
Authors : Holden, H.M.; Carney, A.E.
Deposited on : 2010-12-09
Resolution : 1.65 Å(reported)

This is a Full wwPDB X-ray Structure Validation Report for a publicly released PDB entry.
We welcome your comments at validation@mail.wwpdb.org
A user guide is available at
<http://wwpdb.org/validation/2016/XrayValidationReportHelp>
with specific help available everywhere you see the ⓘ symbol.

The following versions of software and data (see [references ⓘ](#)) were used in the production of this report:

MolProbity : 4.02b-467
Mogul : 1.7 (RC4), CSD as536be (2015)
Xtriage (Phenix) : 1.9-1692
EDS : rb-20026688
Percentile statistics : 20151230.v01 (using entries in the PDB archive December 30th 2015)
Refmac : 5.8.0135
CCP4 : 6.5.0
Ideal geometry (proteins) : Engh & Huber (2001)
Ideal geometry (DNA, RNA) : Parkinson et al. (1996)
Validation Pipeline (wwPDB-VP) : trunk26865

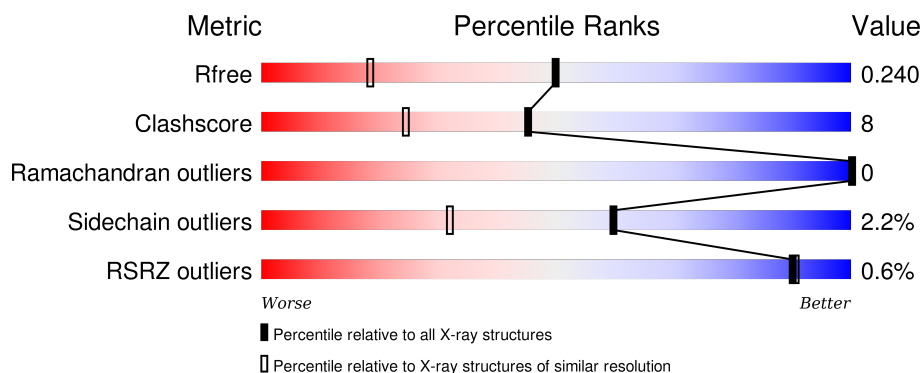
1 Overall quality at a glance

The following experimental techniques were used to determine the structure:

X-RAY DIFFRACTION

The reported resolution of this entry is 1.65 Å.

Percentile scores (ranging between 0-100) for global validation metrics of the entry are shown in the following graphic. The table shows the number of entries on which the scores are based.



Metric	Whole archive (#Entries)	Similar resolution (#Entries, resolution range(Å))
R_{free}	91344	1226 (1.66-1.66)
Clashscore	102246	1323 (1.66-1.66)
Ramachandran outliers	100387	1295 (1.66-1.66)
Sidechain outliers	100360	1295 (1.66-1.66)
RSRZ outliers	91569	1227 (1.66-1.66)

The table below summarises the geometric issues observed across the polymeric chains and their fit to the electron density. The red, orange, yellow and green segments on the lower bar indicate the fraction of residues that contain outliers for ≥ 3 , 2, 1 and 0 types of geometric quality criteria. A grey segment represents the fraction of residues that are not modelled. The numeric value for each fraction is indicated below the corresponding segment, with a dot representing fractions $\leq 5\%$. The upper red bar (where present) indicates the fraction of residues that have poor fit to the electron density. The numeric value is given above the bar.

Mol	Chain	Length	Quality of chain
1	A	262	<div> <div style="width: 100%; height: 10px; background: linear-gradient(to right, red 1%, orange 1%, yellow 1%, green 79%, grey 10%);"></div> <div style="display: flex; justify-content: space-between; width: 100%;"> % 79% 10% 8% </div> </div>
1	D	262	<div> <div style="width: 100%; height: 10px; background: linear-gradient(to right, green 78%, yellow 12%, grey 8%);"></div> <div style="display: flex; justify-content: space-between; width: 100%;"> 78% 12% 8% </div> </div>

The following table lists non-polymeric compounds, carbohydrate monomers and non-standard residues in protein, DNA, RNA chains that are outliers for geometric or electron-density-fit criteria:

Mol	Type	Chain	Res	Chirality	Geometry	Clashes	Electron density
4	EDO	D	264	-	-	-	X
4	EDO	D	265	-	-	-	X

2 Entry composition

There are 5 unique types of molecules in this entry. The entry contains 4232 atoms, of which 0 are hydrogens and 0 are deuteriums.

In the tables below, the ZeroOcc column contains the number of atoms modelled with zero occupancy, the AltConf column contains the number of residues with at least one atom in alternate conformation and the Trace column contains the number of residues modelled with at most 2 atoms.

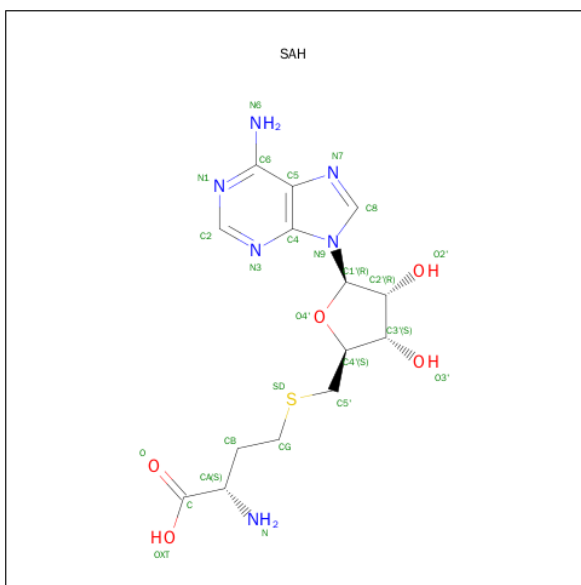
- Molecule 1 is a protein called N-methyltransferase.

Mol	Chain	Residues	Atoms					ZeroOcc	AltConf	Trace
1	A	240	Total	C	N	O	S	0	1	0
			1837	1148	338	344	7			
1	D	240	Total	C	N	O	S	0	3	0
			1851	1156	340	348	7			

There are 16 discrepancies between the modelled and reference sequences:

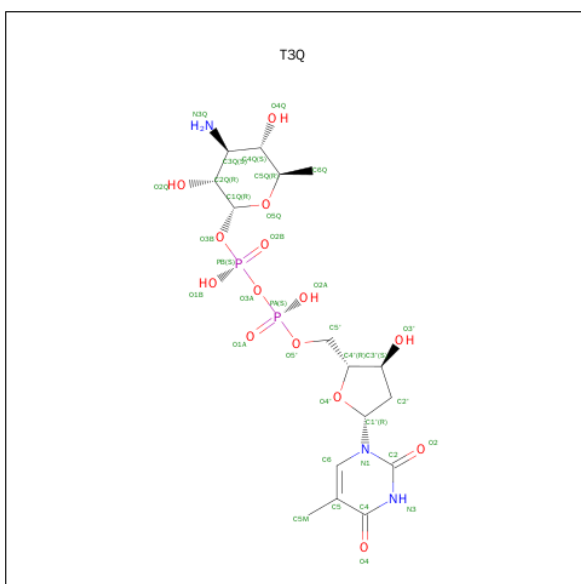
Chain	Residue	Modelled	Actual	Comment	Reference
A	123	ASN	HIS	ENGINEERED MUTATION	UNP P95748
A	256	LEU	-	EXPRESSION TAG	UNP P95748
A	257	GLU	-	EXPRESSION TAG	UNP P95748
A	258	HIS	-	EXPRESSION TAG	UNP P95748
A	259	HIS	-	EXPRESSION TAG	UNP P95748
A	260	HIS	-	EXPRESSION TAG	UNP P95748
A	261	HIS	-	EXPRESSION TAG	UNP P95748
A	262	HIS	-	EXPRESSION TAG	UNP P95748
D	123	ASN	HIS	ENGINEERED MUTATION	UNP P95748
D	256	LEU	-	EXPRESSION TAG	UNP P95748
D	257	GLU	-	EXPRESSION TAG	UNP P95748
D	258	HIS	-	EXPRESSION TAG	UNP P95748
D	259	HIS	-	EXPRESSION TAG	UNP P95748
D	260	HIS	-	EXPRESSION TAG	UNP P95748
D	261	HIS	-	EXPRESSION TAG	UNP P95748
D	262	HIS	-	EXPRESSION TAG	UNP P95748

- Molecule 2 is S-ADENOSYL-L-HOMOCYSTEINE (three-letter code: SAH) (formula: $C_{14}H_{20}N_6O_5S$).



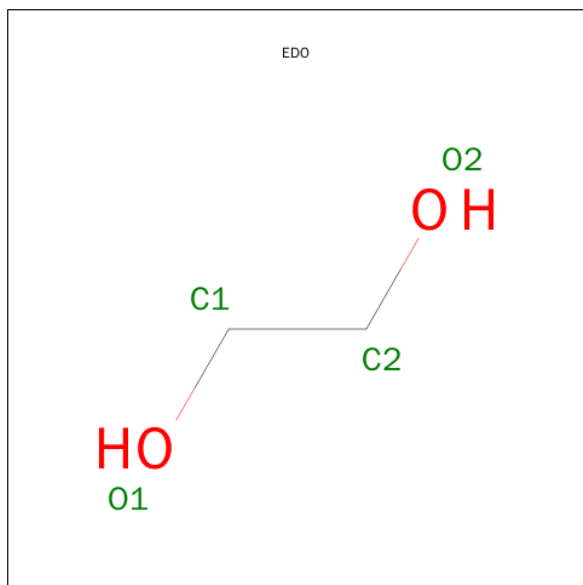
Mol	Chain	Residues	Atoms					ZeroOcc	AltConf
2	A	1	Total 26	C 14	N 6	O 5	S 1	0	0
2	D	1	Total 26	C 14	N 6	O 5	S 1	0	0

- Molecule 3 is [(3R,4S,5S,6R)-4-AMINO-3,5-DIHYDROXY-6-METHYLOXAN-2-YL][HYDROXY-[(2R,3S,5R)-3-HYDROXY-5-(5-METHYL-2,4-DIOXOPYRIMIDIN-1-YL)OXOLAN-2-YL]METHOXY]PHOSPHORYL] HYDROGEN PHOSPHATE (three-letter code: T3Q) (formula: C₁₆H₂₇N₃O₁₄P₂).



Mol	Chain	Residues	Atoms					ZeroOcc	AltConf
3	A	1	Total	C	N	O	P	0	0
			35	16	3	14	2		
3	D	1	Total	C	N	O	P	0	0
			35	16	3	14	2		

- Molecule 4 is 1,2-ETHANEDIOL (three-letter code: EDO) (formula: C₂H₆O₂).



Mol	Chain	Residues	Atoms			ZeroOcc	AltConf
4	D	1	Total	C	O	0	0
			4	2	2		
4	D	1	Total	C	O	0	0
			4	2	2		

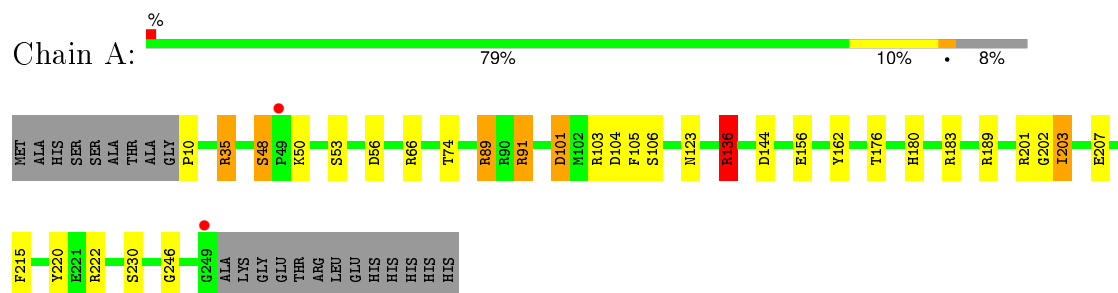
- Molecule 5 is water.

Mol	Chain	Residues	Atoms		ZeroOcc	AltConf
5	A	204	Total	O	0	0
			204	204		
5	D	210	Total	O	0	0
			210	210		

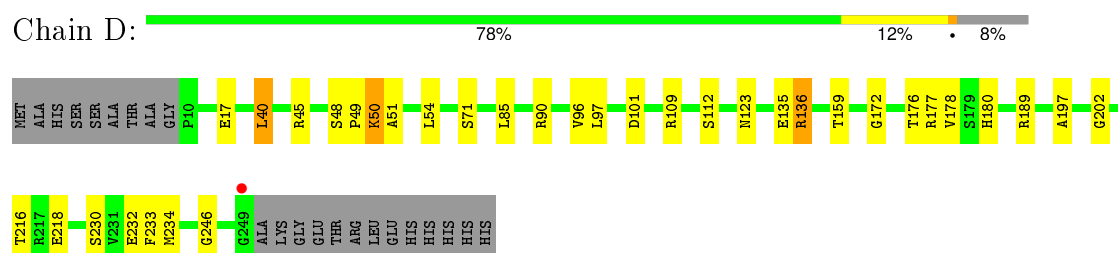
3 Residue-property plots [i](#)

These plots are drawn for all protein, RNA and DNA chains in the entry. The first graphic for a chain summarises the proportions of errors displayed in the second graphic. The second graphic shows the sequence view annotated by issues in geometry and electron density. Residues are color-coded according to the number of geometric quality criteria for which they contain at least one outlier: green = 0, yellow = 1, orange = 2 and red = 3 or more. A red dot above a residue indicates a poor fit to the electron density ($\text{RSRZ} > 2$). Stretches of 2 or more consecutive residues without any outlier are shown as a green connector. Residues present in the sample, but not in the model, are shown in grey.

• Molecule 1: N-methyltransferase



• Molecule 1: N-methyltransferase



4 Data and refinement statistics

Property	Value	Source
Space group	P 1 21 1	Depositor
Cell constants a, b, c, α , β , γ	86.57Å 40.70Å 87.21Å 90.00° 117.93° 90.00°	Depositor
Resolution (Å)	77.05 – 1.65 43.57 – 1.65	Depositor EDS
% Data completeness (in resolution range)	93.5 (77.05-1.65) 93.5 (43.57-1.65)	Depositor EDS
R_{merge}	0.08	Depositor
R_{sym}	0.08	Depositor
$\langle I/\sigma(I) \rangle$ ¹	1.57 (at 1.65Å)	Xtriage
Refinement program	REFMAC 5.5.0066	Depositor
R, R_{free}	0.194 , 0.245 0.190 , 0.240	Depositor DCC
R_{free} test set	3073 reflections (5.31%)	DCC
Wilson B-factor (Å ²)	10.5	Xtriage
Anisotropy	0.065	Xtriage
Bulk solvent k_{sol} (e/Å ³), B_{sol} (Å ²)	0.37 , 49.0	EDS
Estimated twinning fraction	0.000 for -h-l,k,h 0.000 for l,k,-h-l 0.011 for h,-k,-h-l 0.011 for -h-l,-k,l 0.022 for l,-k,h	Xtriage
L-test for twinning ²	$\langle L \rangle = 0.49$, $\langle L^2 \rangle = 0.32$	Xtriage
Outliers	1 of 60948 reflections (0.002%)	Xtriage
F_o, F_c correlation	0.95	EDS
Total number of atoms	4232	wwPDB-VP
Average B, all atoms (Å ²)	16.0	wwPDB-VP

Xtriage's analysis on translational NCS is as follows: *The analyses of the Patterson function reveals a significant off-origin peak that is 38.66 % of the origin peak, indicating pseudo translational symmetry. The chance of finding a peak of this or larger height randomly in a structure without pseudo translational symmetry is equal to 3.5664e-04. The detected translational NCS is most likely also responsible for the elevated intensity ratio.*

¹ Intensities estimated from amplitudes.

² Theoretical values of $\langle |L| \rangle$, $\langle L^2 \rangle$ for acentric reflections are 0.5, 0.375 respectively for untwinned datasets, and 0.333, 0.2 for perfectly twinned datasets.

5 Model quality

5.1 Standard geometry

Bond lengths and bond angles in the following residue types are not validated in this section: SAH, EDO, T3Q

The Z score for a bond length (or angle) is the number of standard deviations the observed value is removed from the expected value. A bond length (or angle) with $|Z| > 5$ is considered an outlier worth inspection. RMSZ is the root-mean-square of all Z scores of the bond lengths (or angles).

Mol	Chain	Bond lengths		Bond angles	
		RMSZ	# Z >5	RMSZ	# Z >5
1	A	0.69	0/1884	1.17	13/2553 (0.5%)
1	D	0.70	0/1901	1.10	6/2576 (0.2%)
All	All	0.69	0/3785	1.14	19/5129 (0.4%)

There are no bond length outliers.

All (19) bond angle outliers are listed below:

Mol	Chain	Res	Type	Atoms	Z	Observed(°)	Ideal(°)
1	A	35	ARG	NE-CZ-NH1	8.94	124.77	120.30
1	A	189	ARG	NE-CZ-NH2	-7.93	116.33	120.30
1	A	89	ARG	NE-CZ-NH2	7.81	124.20	120.30
1	A	203	ILE	CG1-CB-CG2	-7.46	95.00	111.40
1	A	201	ARG	NE-CZ-NH2	7.23	123.92	120.30
1	D	136	ARG	NE-CZ-NH2	7.15	123.87	120.30
1	D	189	ARG	NE-CZ-NH2	-6.79	116.91	120.30
1	A	91	ARG	NE-CZ-NH1	-6.60	117.00	120.30
1	D	136	ARG	NE-CZ-NH1	-6.52	117.04	120.30
1	A	101	ASP	CB-CG-OD1	5.93	123.64	118.30
1	A	136	ARG	NE-CZ-NH1	-5.91	117.35	120.30
1	A	56	ASP	CB-CG-OD2	-5.70	113.17	118.30
1	A	35	ARG	NE-CZ-NH2	-5.55	117.52	120.30
1	D	177	ARG	NE-CZ-NH2	5.54	123.07	120.30
1	A	201	ARG	NE-CZ-NH1	-5.43	117.58	120.30
1	D	40	LEU	CA-CB-CG	5.37	127.66	115.30
1	A	156	GLU	OE1-CD-OE2	-5.33	116.91	123.30
1	D	101	ASP	CB-CG-OD1	-5.18	113.64	118.30
1	A	136	ARG	NE-CZ-NH2	5.16	122.88	120.30

There are no chirality outliers.

There are no planarity outliers.

5.2 Too-close contacts ⓘ

In the following table, the Non-H and H(model) columns list the number of non-hydrogen atoms and hydrogen atoms in the chain respectively. The H(added) column lists the number of hydrogen atoms added and optimized by MolProbity. The Clashes column lists the number of clashes within the asymmetric unit, whereas Symm-Clashes lists symmetry related clashes.

Mol	Chain	Non-H	H(model)	H(added)	Clashes	Symm-Clashes
1	A	1837	0	1771	19	0
1	D	1851	0	1782	41	0
2	A	26	0	19	1	0
2	D	26	0	19	2	0
3	A	35	0	25	1	0
3	D	35	0	25	0	0
4	D	8	0	12	2	0
5	A	204	0	0	5	0
5	D	210	0	0	2	0
All	All	4232	0	3653	58	0

The all-atom clashscore is defined as the number of clashes found per 1000 atoms (including hydrogen atoms). The all-atom clashscore for this structure is 8.

All (58) close contacts within the same asymmetric unit are listed below, sorted by their clash magnitude.

Atom-1	Atom-2	Interatomic distance (Å)	Clash overlap (Å)
1:D:50:LYS:CD	1:D:50:LYS:H	1.61	1.10
1:D:50:LYS:H	1:D:50:LYS:CE	1.68	1.07
1:A:35:ARG:NH2	5:A:344:HOH:O	1.93	0.99
1:D:50:LYS:HD2	1:D:50:LYS:N	1.69	0.97
1:D:50:LYS:CD	1:D:50:LYS:N	2.23	0.95
1:D:50:LYS:H	1:D:50:LYS:HE2	1.37	0.90
1:D:50:LYS:HD2	1:D:50:LYS:C	1.84	0.88
1:A:176:THR:HG21	1:D:176:THR:HG21	1.57	0.87
1:D:50:LYS:HD2	1:D:50:LYS:H	1.32	0.80
1:A:89:ARG:HD2	5:A:453:HOH:O	1.85	0.76
1:D:49:PRO:N	1:D:50:LYS:HE2	2.02	0.75
1:D:172:GLY:HA2	5:D:509:HOH:O	1.91	0.71
1:A:104:ASP:C	1:A:104:ASP:OD1	2.28	0.69
1:D:233:PHE:O	1:D:234:MET:HE3	1.93	0.69
1:D:50:LYS:N	1:D:50:LYS:HE2	2.09	0.66
1:D:49:PRO:CD	1:D:50:LYS:HE2	2.29	0.62
1:D:51:ALA:HB1	1:D:112:SER:HB3	1.83	0.60
1:D:50:LYS:HD2	1:D:51:ALA:N	2.16	0.59

Continued on next page...

Continued from previous page...

Atom-1	Atom-2	Interatomic distance (Å)	Clash overlap (Å)
1:D:230:SER:O	1:D:246:GLY:HA2	2.02	0.59
1:D:90[B]:ARG:HG2	5:D:368:HOH:O	2.01	0.59
1:A:123:ASN:OD1	5:A:513:HOH:O	2.17	0.59
1:D:49:PRO:HD2	1:D:50:LYS:HE2	1.85	0.59
1:D:54:LEU:C	1:D:54:LEU:HD23	2.25	0.56
1:D:17:GLU:O	1:D:17:GLU:HG3	2.05	0.56
1:A:230:SER:O	1:A:246:GLY:HA2	2.06	0.55
1:D:233:PHE:O	1:D:234:MET:CE	2.55	0.54
1:D:135:GLU:OE1	1:D:136:ARG:HD2	2.07	0.54
1:A:101:ASP:OD2	1:A:103:ARG:NH2	2.39	0.54
1:D:218:GLU:H	1:D:218:GLU:CD	2.10	0.54
1:D:123[B]:ASN:OD1	2:D:263:SAH:H8	2.10	0.52
1:D:51:ALA:HB1	1:D:112:SER:CB	2.40	0.51
1:A:183[A]:ARG:NH2	5:A:471:HOH:O	2.00	0.50
1:D:159:THR:OG1	4:D:265:EDO:C1	2.62	0.48
1:D:45:ARG:NH2	1:D:71:SER:O	2.47	0.48
1:D:48:SER:C	1:D:50:LYS:HE3	2.35	0.47
1:D:49:PRO:HD2	1:D:50:LYS:CE	2.44	0.47
1:D:48:SER:C	1:D:50:LYS:CE	2.83	0.47
1:A:203:ILE:HD11	1:D:178:VAL:HG12	1.96	0.46
1:D:51:ALA:CB	1:D:112:SER:HB3	2.44	0.46
1:A:10:PRO:HB3	1:A:207:GLU:HG3	1.97	0.46
1:A:162:TYR:CD1	3:A:301:T3Q:H2'	2.51	0.46
1:A:66:ARG:NH1	1:A:91:ARG:HE	2.14	0.45
1:D:85:LEU:HD11	1:D:97:LEU:HB3	1.99	0.45
1:A:202:GLY:HA2	1:D:180:HIS:CD2	2.51	0.45
1:D:232:GLU:HG2	1:D:234:MET:HE3	1.99	0.44
1:A:48:SER:HB2	1:A:144:ASP:O	2.17	0.44
1:A:105:PHE:CE1	1:A:136:ARG:HB3	2.52	0.44
1:D:216:THR:OG1	1:D:218:GLU:HG2	2.18	0.43
2:D:263:SAH:H4'	2:D:263:SAH:HB1	2.01	0.43
1:A:180:HIS:CD2	1:D:202:GLY:HA2	2.54	0.43
1:D:96:VAL:C	1:D:97:LEU:HD12	2.39	0.42
1:D:197:ALA:HA	1:D:202:GLY:O	2.20	0.42
1:A:215:PHE:HB2	1:A:220:TYR:CE2	2.55	0.41
2:A:263:SAH:H4'	2:A:263:SAH:HB1	2.03	0.41
1:D:159:THR:OG1	4:D:265:EDO:H12	2.20	0.41
1:D:50:LYS:CD	1:D:50:LYS:C	2.71	0.41
1:A:183[A]:ARG:NE	5:A:367:HOH:O	2.23	0.41
1:A:53:SER:HA	1:A:74:THR:O	2.22	0.40

There are no symmetry-related clashes.

5.3 Torsion angles

5.3.1 Protein backbone

In the following table, the Percentiles column shows the percent Ramachandran outliers of the chain as a percentile score with respect to all X-ray entries followed by that with respect to entries of similar resolution.

The Analysed column shows the number of residues for which the backbone conformation was analysed, and the total number of residues.

Mol	Chain	Analysed	Favoured	Allowed	Outliers	Percentiles	
1	A	239/262 (91%)	236 (99%)	3 (1%)	0	100	100
1	D	241/262 (92%)	236 (98%)	5 (2%)	0	100	100
All	All	480/524 (92%)	472 (98%)	8 (2%)	0	100	100

There are no Ramachandran outliers to report.

5.3.2 Protein sidechains

In the following table, the Percentiles column shows the percent sidechain outliers of the chain as a percentile score with respect to all X-ray entries followed by that with respect to entries of similar resolution.

The Analysed column shows the number of residues for which the sidechain conformation was analysed, and the total number of residues.

Mol	Chain	Analysed	Rotameric	Outliers	Percentiles	
1	A	186/201 (92%)	181 (97%)	5 (3%)	52	23
1	D	188/201 (94%)	185 (98%)	3 (2%)	70	48
All	All	374/402 (93%)	366 (98%)	8 (2%)	60	34

All (8) residues with a non-rotameric sidechain are listed below:

Mol	Chain	Res	Type
1	A	48	SER
1	A	50	LYS
1	A	106	SER
1	A	136	ARG
1	A	222	ARG
1	D	40	LEU
1	D	50	LYS
1	D	109	ARG

Some sidechains can be flipped to improve hydrogen bonding and reduce clashes. All (1) such sidechains are listed below:

Mol	Chain	Res	Type
1	D	157	ASN

5.3.3 RNA [i](#)

There are no RNA molecules in this entry.

5.4 Non-standard residues in protein, DNA, RNA chains [i](#)

There are no non-standard protein/DNA/RNA residues in this entry.

5.5 Carbohydrates [i](#)

There are no carbohydrates in this entry.

5.6 Ligand geometry [i](#)

6 ligands are modelled in this entry.

In the following table, the Counts columns list the number of bonds (or angles) for which Mogul statistics could be retrieved, the number of bonds (or angles) that are observed in the model and the number of bonds (or angles) that are defined in the chemical component dictionary. The Link column lists molecule types, if any, to which the group is linked. The Z score for a bond length (or angle) is the number of standard deviations the observed value is removed from the expected value. A bond length (or angle) with $|Z| > 2$ is considered an outlier worth inspection. RMSZ is the root-mean-square of all Z scores of the bond lengths (or angles).

Mol	Type	Chain	Res	Link	Bond lengths			Bond angles		
					Counts	RMSZ	# $ Z > 2$	Counts	RMSZ	# $ Z > 2$
2	SAH	A	263	-	20,28,28	1.17	2 (10%)	19,40,40	2.12	3 (15%)
3	T3Q	A	301	-	29,37,37	1.22	2 (6%)	41,57,57	2.05	13 (31%)
2	SAH	D	263	-	20,28,28	1.19	2 (10%)	19,40,40	2.37	7 (36%)
4	EDO	D	264	-	3,3,3	0.62	0	2,2,2	0.24	0
4	EDO	D	265	-	3,3,3	0.51	0	2,2,2	0.76	0
3	T3Q	D	301	-	29,37,37	1.04	1 (3%)	41,57,57	1.87	7 (17%)

In the following table, the Chirals column lists the number of chiral outliers, the number of chiral centers analysed, the number of these observed in the model and the number defined in the chemical component dictionary. Similar counts are reported in the Torsion and Rings columns. '-' means

no outliers of that kind were identified.

Mol	Type	Chain	Res	Link	Chirals	Torsions	Rings
2	SAH	A	263	-	-	0/7/31/31	0/3/3/3
3	T3Q	A	301	-	-	0/17/53/53	0/3/3/3
2	SAH	D	263	-	-	0/7/31/31	0/3/3/3
4	EDO	D	264	-	-	0/1/1/1	0/0/0/0
4	EDO	D	265	-	-	0/1/1/1	0/0/0/0
3	T3Q	D	301	-	-	0/17/53/53	0/3/3/3

All (7) bond length outliers are listed below:

Mol	Chain	Res	Type	Atoms	Z	Observed(Å)	Ideal(Å)
2	D	263	SAH	C5'-SD	-2.54	1.76	1.81
2	A	263	SAH	C5'-SD	-2.35	1.76	1.81
3	D	301	T3Q	C6-N1	2.50	1.38	1.35
3	A	301	T3Q	C6-N1	2.51	1.38	1.35
3	A	301	T3Q	C4-N3	2.89	1.38	1.33
2	D	263	SAH	C5-C4	3.48	1.48	1.40
2	A	263	SAH	C5-C4	3.57	1.48	1.40

All (30) bond angle outliers are listed below:

Mol	Chain	Res	Type	Atoms	Z	Observed(°)	Ideal(°)
2	D	263	SAH	N3-C2-N1	-5.80	124.45	128.89
3	A	301	T3Q	C6Q-C5Q-C4Q	-5.27	102.70	113.08
2	A	263	SAH	N3-C2-N1	-5.20	124.92	128.89
2	A	263	SAH	C1'-N9-C4	-5.00	119.40	126.94
3	A	301	T3Q	C5-C4-N3	-4.70	119.90	125.14
2	D	263	SAH	C4-C5-N7	-4.63	105.22	109.48
3	D	301	T3Q	C4Q-C3Q-N3Q	-4.56	102.40	110.86
3	D	301	T3Q	C5-C4-N3	-4.03	120.65	125.14
2	A	263	SAH	C4-C5-N7	-3.87	105.92	109.48
3	A	301	T3Q	O3A-PA-O5'	-3.77	92.94	102.94
3	A	301	T3Q	O2Q-C2Q-C3Q	-3.57	104.29	110.31
3	A	301	T3Q	C4Q-C3Q-N3Q	-3.26	104.82	110.86
2	D	263	SAH	C1'-N9-C4	-3.12	122.23	126.94
3	A	301	T3Q	O5Q-C1Q-O3B	-2.86	107.59	111.36
3	A	301	T3Q	O4'-C1'-N1	-2.42	103.53	107.72
3	A	301	T3Q	O5Q-C1Q-C2Q	-2.36	105.43	110.28
3	D	301	T3Q	C2'-C1'-N1	-2.35	108.43	114.16
3	A	301	T3Q	O3'-C3'-C2'	-2.33	103.05	110.74
2	D	263	SAH	CB-CG-SD	-2.12	109.49	113.57
2	D	263	SAH	C4'-O4'-C1'	-2.06	107.46	109.72

Continued on next page...

Continued from previous page...

Mol	Chain	Res	Type	Atoms	Z	Observed(°)	Ideal(°)
3	D	301	T3Q	O5Q-C1Q-O3B	-2.04	108.67	111.36
3	A	301	T3Q	O3A-PB-O3B	-2.00	97.87	103.63
3	D	301	T3Q	C5M-C5-C6	2.02	122.68	118.62
3	A	301	T3Q	O4'-C4'-C5'	2.11	116.85	109.32
3	A	301	T3Q	O5'-PA-O1A	2.14	117.92	109.62
2	D	263	SAH	C2'-C1'-N9	2.22	117.68	114.29
3	D	301	T3Q	O5Q-C5Q-C4Q	3.32	115.28	109.53
2	D	263	SAH	C2-N1-C6	4.20	126.27	118.77
3	A	301	T3Q	C4-N3-C2	4.75	119.36	115.25
3	D	301	T3Q	C4-N3-C2	5.87	120.32	115.25

There are no chirality outliers.

There are no torsion outliers.

There are no ring outliers.

4 monomers are involved in 6 short contacts:

Mol	Chain	Res	Type	Clashes	Symm-Clashes
2	A	263	SAH	1	0
3	A	301	T3Q	1	0
2	D	263	SAH	2	0
4	D	265	EDO	2	0

5.7 Other polymers [i](#)

There are no such residues in this entry.

5.8 Polymer linkage issues [i](#)

There are no chain breaks in this entry.

6 Fit of model and data [i](#)

6.1 Protein, DNA and RNA chains [i](#)

In the following table, the column labelled ‘#RSRZ> 2’ contains the number (and percentage) of RSRZ outliers, followed by percent RSRZ outliers for the chain as percentile scores relative to all X-ray entries and entries of similar resolution. The OWAB column contains the minimum, median, 95th percentile and maximum values of the occupancy-weighted average B-factor per residue. The column labelled ‘Q< 0.9’ lists the number of (and percentage) of residues with an average occupancy less than 0.9.

Mol	Chain	Analysed	<RSRZ>	#RSRZ>2	OWAB(Å ²)	Q<0.9
1	A	240/262 (91%)	-0.47	2 (0%) 87 88	5, 15, 29, 48	0
1	D	240/262 (91%)	-0.47	1 (0%) 93 93	6, 14, 32, 40	0
All	All	480/524 (91%)	-0.47	3 (0%) 90 90	5, 14, 29, 48	0

All (3) RSRZ outliers are listed below:

Mol	Chain	Res	Type	RSRZ
1	A	249	GLY	4.1
1	D	249	GLY	3.2
1	A	49	PRO	2.0

6.2 Non-standard residues in protein, DNA, RNA chains [i](#)

There are no non-standard protein/DNA/RNA residues in this entry.

6.3 Carbohydrates [i](#)

There are no carbohydrates in this entry.

6.4 Ligands [i](#)

In the following table, the Atoms column lists the number of modelled atoms in the group and the number defined in the chemical component dictionary. LLDF column lists the quality of electron density of the group with respect to its neighbouring residues in protein, DNA or RNA chains. The B-factors column lists the minimum, median, 95th percentile and maximum values of B factors of atoms in the group. The column labelled ‘Q< 0.9’ lists the number of atoms with occupancy less than 0.9.

Mol	Type	Chain	Res	Atoms	RSCC	RSR	LLDF	B-factors(\AA^2)	Q<0.9
4	EDO	D	265	4/4	0.92	0.14	7.38	22,27,30,36	0
4	EDO	D	264	4/4	0.94	0.11	3.11	18,20,25,28	0
3	T3Q	D	301	35/35	0.99	0.07	0.44	2,7,11,14	0
3	T3Q	A	301	35/35	0.99	0.07	-0.06	2,6,11,13	0
2	SAH	D	263	26/26	0.99	0.06	-0.25	5,8,12,13	0
2	SAH	A	263	26/26	0.99	0.05	-0.61	2,9,14,15	0

6.5 Other polymers [i](#)

There are no such residues in this entry.