



Full wwPDB X-ray Structure Validation Report ⓘ

Feb 1, 2016 – 07:48 PM GMT

PDB ID : 4PY6
Title : Crystal Structure of bromodomain of PFA0510w from Plasmodium Falciparum
Authors : Fonseca, M.; Tallant, C.; Hutchinson, A.; Savitsky, P.; Krojer, T.; Filipakopoulos, P.; Loppnau, P.; Brennan, P.E.; von Delft, F.; Dong, A.; Josling, G.A.; Duffy, M.F.; Arrowsmith, C.H.; Bountra, C.; Hui, R.; Knapp, S.; Wernimont, A.K.; Structural Genomics Consortium (SGC)
Deposited on : 2014-03-26
Resolution : 2.50 Å(reported)

This is a Full wwPDB X-ray Structure Validation Report for a publicly released PDB entry.
We welcome your comments at validation@mail.wwpdb.org
A user guide is available at
<http://wwpdb.org/validation/2016/XrayValidationReportHelp>
with specific help available everywhere you see the ⓘ symbol.

The following versions of software and data (see [references ⓘ](#)) were used in the production of this report:

MolProbity : 4.02b-467
Mogul : 1.7 (RC4), CSD as536be (2015)
Xtriage (Phenix) : 1.9-1692
EDS : rb-20026688
Percentile statistics : 20151230.v01 (using entries in the PDB archive December 30th 2015)
Refmac : 5.8.0135
CCP4 : 6.5.0
Ideal geometry (proteins) : Engh & Huber (2001)
Ideal geometry (DNA, RNA) : Parkinson et al. (1996)
Validation Pipeline (wwPDB-VP) : trunk26865

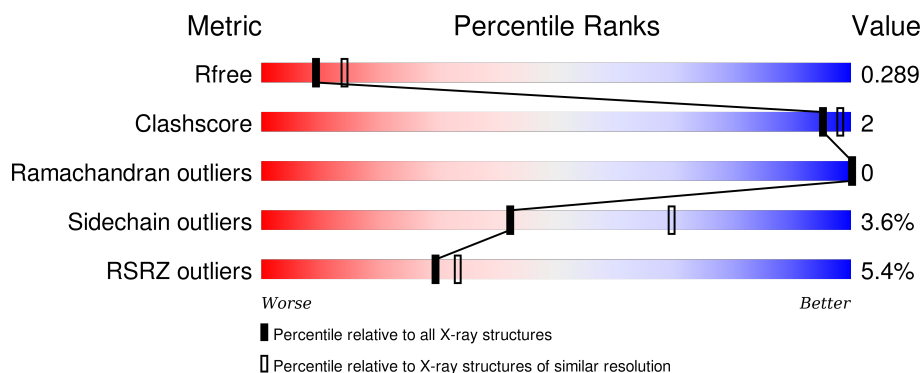
1 Overall quality at a glance ⓘ

The following experimental techniques were used to determine the structure:

X-RAY DIFFRACTION

The reported resolution of this entry is 2.50 Å.

Percentile scores (ranging between 0-100) for global validation metrics of the entry are shown in the following graphic. The table shows the number of entries on which the scores are based.



Metric	Whole archive (#Entries)	Similar resolution (#Entries, resolution range(Å))
R_{free}	91344	3553 (2.50-2.50)
Clashscore	102246	4242 (2.50-2.50)
Ramachandran outliers	100387	4156 (2.50-2.50)
Sidechain outliers	100360	4158 (2.50-2.50)
RSRZ outliers	91569	3562 (2.50-2.50)

The table below summarises the geometric issues observed across the polymeric chains and their fit to the electron density. The red, orange, yellow and green segments on the lower bar indicate the fraction of residues that contain outliers for ≥ 3 , 2, 1 and 0 types of geometric quality criteria. A grey segment represents the fraction of residues that are not modelled. The numeric value for each fraction is indicated below the corresponding segment, with a dot representing fractions $\leq 5\%$. The upper red bar (where present) indicates the fraction of residues that have poor fit to the electron density. The numeric value is given above the bar.

Mol	Chain	Length	Quality of chain
1	A	145	<div> <div>0%</div> <div>82% 9% 9%</div> </div>
1	B	145	<div> <div>4%</div> <div>86% • 10%</div> </div>
1	C	145	<div> <div>5%</div> <div>83% • 12%</div> </div>
1	D	145	<div> <div>10%</div> <div>79% 9% 12%</div> </div>

The following table lists non-polymeric compounds, carbohydrate monomers and non-standard

residues in protein, DNA, RNA chains that are outliers for geometric or electron-density-fit criteria:

Mol	Type	Chain	Res	Chirality	Geometry	Clashes	Electron density
2	R78	C	1401	-	-	-	X
3	EDO	B	1403	-	-	-	X

2 Entry composition

There are 4 unique types of molecules in this entry. The entry contains 4733 atoms, of which 0 are hydrogens and 0 are deuteriums.

In the tables below, the ZeroOcc column contains the number of atoms modelled with zero occupancy, the AltConf column contains the number of residues with at least one atom in alternate conformation and the Trace column contains the number of residues modelled with at most 2 atoms.

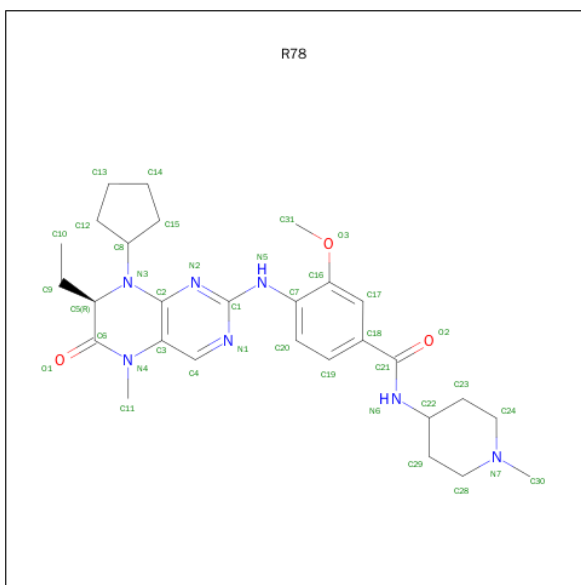
- Molecule 1 is a protein called Bromodomain protein, putative.

Mol	Chain	Residues	Atoms					ZeroOcc	AltConf	Trace
1	A	132	Total	C	N	O	S	0	1	0
			1138	734	189	210	5			
1	B	131	Total	C	N	O	S	0	0	0
			1119	722	185	207	5			
1	C	127	Total	C	N	O	S	0	1	0
			1092	707	179	201	5			
1	D	128	Total	C	N	O	S	0	0	0
			1092	706	178	203	5			

There are 4 discrepancies between the modelled and reference sequences:

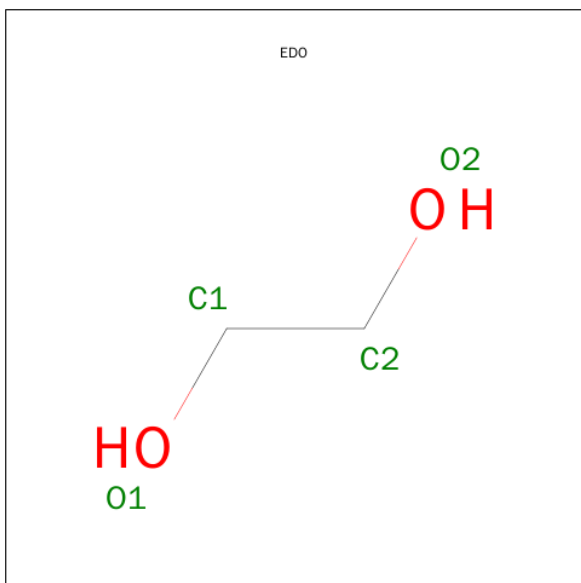
Chain	Residue	Modelled	Actual	Comment	Reference
A	1174	GLY	-	EXPRESSION TAG	UNP Q8I240
B	1174	GLY	-	EXPRESSION TAG	UNP Q8I240
C	1174	GLY	-	EXPRESSION TAG	UNP Q8I240
D	1174	GLY	-	EXPRESSION TAG	UNP Q8I240

- Molecule 2 is 4-([(7R)-8-CYCLOPENTYL-7-ETHYL-5-METHYL-6-OXO-5,6,7,8-TETRAHYDROPTERIDIN-2-YL]AMINO}-3-METHOXY-N-(1-METHYLPYPERIDIN-4-YL)BENZAMIDE (three-letter code: R78) (formula: C₂₈H₃₉N₇O₃).



Mol	Chain	Residues	Atoms				ZeroOcc	AltConf
2	A	1	Total	C	N	O	0	1
			58	44	10	4		
2	B	1	Total	C	N	O	0	0
			29	22	5	2		
2	C	1	Total	C	N	O	0	0
			29	22	5	2		
2	D	1	Total	C	N	O	0	0
			29	22	5	2		

- Molecule 3 is 1,2-ETHANEDIOL (three-letter code: EDO) (formula: C₂H₆O₂).



Mol	Chain	Residues	Atoms	ZeroOcc	AltConf
3	A	1	Total C O 4 2 2	0	0
3	B	1	Total C O 4 2 2	0	0
3	B	1	Total C O 4 2 2	0	0

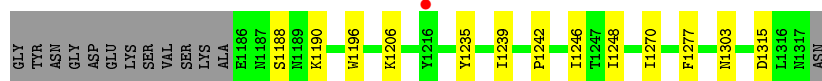
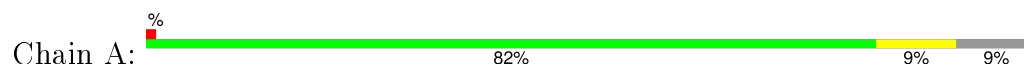
- Molecule 4 is water.

Mol	Chain	Residues	Atoms	ZeroOcc	AltConf
4	A	46	Total O 46 46	0	0
4	B	40	Total O 41 41	0	1
4	C	28	Total O 28 28	0	0
4	D	20	Total O 20 20	0	0

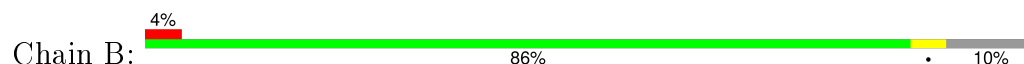
3 Residue-property plots [i](#)

These plots are drawn for all protein, RNA and DNA chains in the entry. The first graphic for a chain summarises the proportions of errors displayed in the second graphic. The second graphic shows the sequence view annotated by issues in geometry and electron density. Residues are color-coded according to the number of geometric quality criteria for which they contain at least one outlier: green = 0, yellow = 1, orange = 2 and red = 3 or more. A red dot above a residue indicates a poor fit to the electron density ($RSRZ > 2$). Stretches of 2 or more consecutive residues without any outlier are shown as a green connector. Residues present in the sample, but not in the model, are shown in grey.

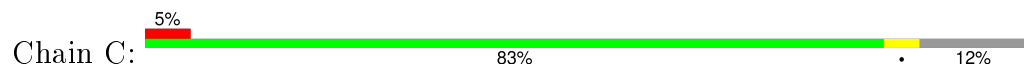
- Molecule 1: Bromodomain protein, putative



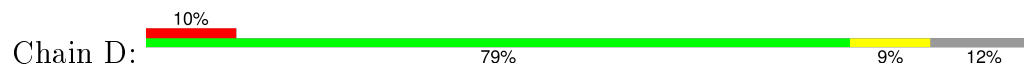
- Molecule 1: Bromodomain protein, putative



- Molecule 1: Bromodomain protein, putative



- Molecule 1: Bromodomain protein, putative



4 Data and refinement statistics

Property	Value	Source
Space group	I 2 2 2	Depositor
Cell constants a, b, c, α , β , γ	74.32Å 84.27Å 219.72Å 90.00° 90.00° 90.00°	Depositor
Resolution (Å)	29.41 – 2.50 28.92 – 2.50	Depositor EDS
% Data completeness (in resolution range)	99.8 (29.41-2.50) 99.8 (28.92-2.50)	Depositor EDS
R_{merge}	0.16	Depositor
R_{sym}	(Not available)	Depositor
$\langle I/\sigma(I) \rangle$ ¹	3.49 (at 2.51Å)	Xtriage
Refinement program	BUSTER 2.10.0	Depositor
R, R_{free}	0.237 , 0.268 0.255 , 0.289	Depositor DCC
R_{free} test set	1254 reflections (5.44%)	DCC
Wilson B-factor (Å ²)	34.5	Xtriage
Anisotropy	0.080	Xtriage
Bulk solvent k_{sol} (e/Å ³), B_{sol} (Å ²)	0.32 , 46.1	EDS
Estimated twinning fraction	No twinning to report.	Xtriage
L-test for twinning ²	$\langle L \rangle = 0.45$, $\langle L^2 \rangle = 0.28$	Xtriage
Outliers	1 of 24293 reflections (0.004%)	Xtriage
F_o, F_c correlation	0.89	EDS
Total number of atoms	4733	wwPDB-VP
Average B, all atoms (Å ²)	45.0	wwPDB-VP

Xtriage's analysis on translational NCS is as follows: *The largest off-origin peak in the Patterson function is 4.08% of the height of the origin peak. No significant pseudotranslation is detected.*

¹Intensities estimated from amplitudes.

²Theoretical values of $\langle |L| \rangle$, $\langle L^2 \rangle$ for acentric reflections are 0.5, 0.375 respectively for untwinned datasets, and 0.333, 0.2 for perfectly twinned datasets.

5 Model quality [i](#)

5.1 Standard geometry [i](#)

Bond lengths and bond angles in the following residue types are not validated in this section: R78, EDO

The Z score for a bond length (or angle) is the number of standard deviations the observed value is removed from the expected value. A bond length (or angle) with $|Z| > 5$ is considered an outlier worth inspection. RMSZ is the root-mean-square of all Z scores of the bond lengths (or angles).

Mol	Chain	Bond lengths		Bond angles	
		RMSZ	$\# Z > 5$	RMSZ	$\# Z > 5$
1	A	0.38	0/1165	0.57	0/1565
1	B	0.38	0/1143	0.57	0/1538
1	C	0.38	0/1116	0.57	0/1501
1	D	0.39	0/1116	0.57	0/1502
All	All	0.38	0/4540	0.57	0/6106

There are no bond length outliers.

There are no bond angle outliers.

There are no chirality outliers.

There are no planarity outliers.

5.2 Too-close contacts [i](#)

In the following table, the Non-H and H(model) columns list the number of non-hydrogen atoms and hydrogen atoms in the chain respectively. The H(added) column lists the number of hydrogen atoms added and optimized by MolProbity. The Clashes column lists the number of clashes within the asymmetric unit, whereas Symm-Clashes lists symmetry related clashes.

Mol	Chain	Non-H	H(model)	H(added)	Clashes	Symm-Clashes
1	A	1138	0	1137	4	0
1	B	1119	0	1108	1	0
1	C	1092	0	1080	3	0
1	D	1092	0	1078	3	0
2	A	58	0	52	2	0
2	B	29	0	26	0	0
2	C	29	0	26	2	0
2	D	29	0	26	1	0
3	A	4	0	6	1	0

Continued on next page...

Continued from previous page...

Mol	Chain	Non-H	H(model)	H(added)	Clashes	Symm-Clashes
3	B	8	0	12	0	0
4	A	46	0	0	0	0
4	B	41	0	0	0	0
4	C	28	0	0	0	0
4	D	20	0	0	0	0
All	All	4733	0	4551	15	0

The all-atom clashscore is defined as the number of clashes found per 1000 atoms (including hydrogen atoms). The all-atom clashscore for this structure is 2.

All (15) close contacts within the same asymmetric unit are listed below, sorted by their clash magnitude.

Atom-1	Atom-2	Interatomic distance (Å)	Clash overlap (Å)
1:D:1248:ILE:HD12	1:D:1270:ILE:HD11	1.83	0.61
1:A:1239:ILE:HD11	1:A:1277:PHE:HB2	1.86	0.56
1:A:1196:TRP:HE1	3:A:1402:EDO:H21	1.75	0.52
1:C:1239:ILE:HD11	1:C:1277:PHE:HB2	1.92	0.50
1:A:1248:ILE:HD12	1:A:1270:ILE:HD11	1.95	0.49
1:C:1248:ILE:HD12	1:C:1270:ILE:HD11	1.96	0.48
1:D:1239:ILE:HD11	1:D:1277:PHE:HB2	1.98	0.45
1:A:1235:TYR:HE1	1:A:1242:PRO:HB3	1.81	0.45
1:C:1227:ILE:HG12	2:C:1401:R78:HN5	1.82	0.45
2:A:1401[B]:R78:H4	2:A:1401[B]:R78:H11	1.86	0.43
2:D:1401:R78:H20	2:D:1401:R78:N1	2.33	0.43
2:A:1401[A]:R78:H4	2:A:1401[A]:R78:H11	1.85	0.42
2:C:1401:R78:H12	2:C:1401:R78:H5	1.88	0.42
1:D:1235:TYR:HE2	1:D:1242:PRO:HB3	1.84	0.41
1:B:1200:LEU:HD22	1:B:1263:PHE:CE1	2.56	0.41

There are no symmetry-related clashes.

5.3 Torsion angles ⓘ

5.3.1 Protein backbone ⓘ

In the following table, the Percentiles column shows the percent Ramachandran outliers of the chain as a percentile score with respect to all X-ray entries followed by that with respect to entries of similar resolution.

The Analysed column shows the number of residues for which the backbone conformation was analysed, and the total number of residues.

Mol	Chain	Analysed	Favoured	Allowed	Outliers	Percentiles	
1	A	131/145 (90%)	127 (97%)	4 (3%)	0	100	100
1	B	129/145 (89%)	125 (97%)	4 (3%)	0	100	100
1	C	126/145 (87%)	123 (98%)	3 (2%)	0	100	100
1	D	126/145 (87%)	122 (97%)	4 (3%)	0	100	100
All	All	512/580 (88%)	497 (97%)	15 (3%)	0	100	100

There are no Ramachandran outliers to report.

5.3.2 Protein sidechains ⓘ

In the following table, the Percentiles column shows the percent sidechain outliers of the chain as a percentile score with respect to all X-ray entries followed by that with respect to entries of similar resolution.

The Analysed column shows the number of residues for which the sidechain conformation was analysed, and the total number of residues.

Mol	Chain	Analysed	Rotameric	Outliers	Percentiles	
1	A	128/138 (93%)	122 (95%)	6 (5%)	32	56
1	B	125/138 (91%)	121 (97%)	4 (3%)	46	74
1	C	121/138 (88%)	120 (99%)	1 (1%)	86	96
1	D	122/138 (88%)	115 (94%)	7 (6%)	25	46
All	All	496/552 (90%)	478 (96%)	18 (4%)	42	69

All (18) residues with a non-rotameric sidechain are listed below:

Mol	Chain	Res	Type
1	A	1188	SER
1	A	1190	LYS
1	A	1206	LYS
1	A	1246	ILE
1	A	1303	ASN
1	A	1315	ASP
1	B	1192	LEU
1	B	1230	ASN
1	B	1234	GLU
1	B	1312	ASN
1	C	1258	LYS
1	D	1192	LEU
1	D	1201	ARG

Continued on next page...

Continued from previous page...

Mol	Chain	Res	Type
1	D	1210	ASN
1	D	1234	GLU
1	D	1238	LYS
1	D	1258	LYS
1	D	1318	ASN

Some sidechains can be flipped to improve hydrogen bonding and reduce clashes. All (4) such sidechains are listed below:

Mol	Chain	Res	Type
1	A	1311	ASN
1	B	1203	ASN
1	B	1251	ASN
1	D	1318	ASN

5.3.3 RNA [i](#)

There are no RNA molecules in this entry.

5.4 Non-standard residues in protein, DNA, RNA chains [i](#)

There are no non-standard protein/DNA/RNA residues in this entry.

5.5 Carbohydrates [i](#)

There are no carbohydrates in this entry.

5.6 Ligand geometry [i](#)

8 ligands are modelled in this entry.

In the following table, the Counts columns list the number of bonds (or angles) for which Mogul statistics could be retrieved, the number of bonds (or angles) that are observed in the model and the number of bonds (or angles) that are defined in the chemical component dictionary. The Link column lists molecule types, if any, to which the group is linked. The Z score for a bond length (or angle) is the number of standard deviations the observed value is removed from the expected value. A bond length (or angle) with $|Z| > 2$ is considered an outlier worth inspection. RMSZ is the root-mean-square of all Z scores of the bond lengths (or angles).

Mol	Type	Chain	Res	Link	Bond lengths			Bond angles		
					Counts	RMSZ	# Z > 2	Counts	RMSZ	# Z > 2
2	R78	A	1401[A]	-	30,32,42	1.73	5 (16%)	32,46,60	1.79	7 (21%)
2	R78	A	1401[B]	-	30,32,42	1.75	5 (16%)	32,46,60	1.65	5 (15%)
3	EDO	A	1402	-	3,3,3	0.55	0	2,2,2	0.42	0
2	R78	B	1401	-	30,32,42	1.77	6 (20%)	32,46,60	1.76	4 (12%)
3	EDO	B	1402	-	3,3,3	0.57	0	2,2,2	0.35	0
3	EDO	B	1403	-	3,3,3	0.57	0	2,2,2	0.42	0
2	R78	C	1401	-	30,32,42	1.81	7 (23%)	32,46,60	1.70	6 (18%)
2	R78	D	1401	-	30,32,42	1.78	6 (20%)	32,46,60	1.75	5 (15%)

In the following table, the Chirals column lists the number of chiral outliers, the number of chiral centers analysed, the number of these observed in the model and the number defined in the chemical component dictionary. Similar counts are reported in the Torsion and Rings columns. '-' means no outliers of that kind were identified.

Mol	Type	Chain	Res	Link	Chirals	Torsions	Rings
2	R78	A	1401[A]	-	-	0/12/39/57	0/4/4/5
2	R78	A	1401[B]	-	-	0/12/39/57	0/4/4/5
3	EDO	A	1402	-	-	0/1/1/1	0/0/0/0
2	R78	B	1401	-	-	0/12/39/57	0/4/4/5
3	EDO	B	1402	-	-	0/1/1/1	0/0/0/0
3	EDO	B	1403	-	-	0/1/1/1	0/0/0/0
2	R78	C	1401	-	-	0/12/39/57	0/4/4/5
2	R78	D	1401	-	-	0/12/39/57	0/4/4/5

All (29) bond length outliers are listed below:

Mol	Chain	Res	Type	Atoms	Z	Observed(Å)	Ideal(Å)
2	D	1401	R78	C5-C6	-5.35	1.41	1.51
2	A	1401[A]	R78	C5-C6	-5.28	1.41	1.51
2	B	1401	R78	C5-C6	-5.21	1.41	1.51
2	A	1401[B]	R78	C5-C6	-5.20	1.41	1.51
2	C	1401	R78	C5-C6	-5.20	1.41	1.51
2	C	1401	R78	C21-C18	-3.18	1.39	1.51
2	D	1401	R78	C21-C18	-3.17	1.39	1.51
2	A	1401[B]	R78	C21-C18	-3.15	1.39	1.51
2	A	1401[A]	R78	C21-C18	-3.13	1.39	1.51
2	B	1401	R78	C21-C18	-3.12	1.39	1.51
2	B	1401	R78	C14-C15	-2.84	1.39	1.51
2	A	1401[A]	R78	C14-C15	-2.83	1.39	1.51
2	A	1401[B]	R78	C14-C15	-2.80	1.39	1.51
2	C	1401	R78	C14-C15	-2.80	1.39	1.51

Continued on next page...

Continued from previous page...

Mol	Chain	Res	Type	Atoms	Z	Observed(Å)	Ideal(Å)
2	D	1401	R78	C14-C15	-2.80	1.39	1.51
2	D	1401	R78	C13-C12	-2.79	1.39	1.51
2	A	1401[A]	R78	C13-C12	-2.78	1.39	1.51
2	B	1401	R78	C13-C12	-2.78	1.39	1.51
2	C	1401	R78	C13-C12	-2.76	1.40	1.51
2	A	1401[B]	R78	C13-C12	-2.76	1.40	1.51
2	C	1401	R78	C7-N5	-2.09	1.34	1.39
2	D	1401	R78	C5-N3	2.48	1.51	1.47
2	B	1401	R78	C5-N3	2.67	1.51	1.47
2	C	1401	R78	C5-N3	2.75	1.51	1.47
2	A	1401[A]	R78	C4-N1	3.02	1.40	1.34
2	A	1401[B]	R78	C4-N1	3.13	1.41	1.34
2	D	1401	R78	C4-N1	3.18	1.41	1.34
2	B	1401	R78	C4-N1	3.34	1.41	1.34
2	C	1401	R78	C4-N1	3.40	1.41	1.34

All (27) bond angle outliers are listed below:

Mol	Chain	Res	Type	Atoms	Z	Observed(°)	Ideal(°)
2	B	1401	R78	N1-C1-N2	-7.34	118.85	126.67
2	D	1401	R78	N1-C1-N2	-7.19	119.01	126.67
2	A	1401[A]	R78	N1-C1-N2	-7.12	119.09	126.67
2	C	1401	R78	N1-C1-N2	-6.73	119.50	126.67
2	A	1401[B]	R78	N1-C1-N2	-6.46	119.79	126.67
2	A	1401[A]	R78	C31-O3-C16	-2.44	113.84	117.54
2	A	1401[B]	R78	C7-N5-C1	-2.32	123.11	129.22
2	C	1401	R78	C31-O3-C16	-2.29	114.06	117.54
2	B	1401	R78	C7-N5-C1	-2.12	123.63	129.22
2	C	1401	R78	C7-N5-C1	-2.05	123.81	129.22
2	A	1401[A]	R78	C14-C13-C12	2.04	112.57	106.09
2	D	1401	R78	O3-C16-C7	2.15	117.61	114.87
2	C	1401	R78	C4-N1-C1	2.15	120.06	115.95
2	A	1401[B]	R78	C4-N1-C1	2.18	120.11	115.95
2	D	1401	R78	N5-C1-N1	2.22	122.73	116.01
2	A	1401[A]	R78	N5-C1-N1	2.33	123.06	116.01
2	A	1401[A]	R78	O3-C16-C7	2.34	117.86	114.87
2	C	1401	R78	O3-C16-C7	2.38	117.91	114.87
2	B	1401	R78	C4-N1-C1	2.39	120.52	115.95
2	A	1401[B]	R78	O3-C16-C7	2.41	117.95	114.87
2	A	1401[B]	R78	C1-N2-C2	2.51	122.77	113.90
2	D	1401	R78	C1-N2-C2	2.52	122.82	113.90
2	C	1401	R78	C1-N2-C2	2.58	123.03	113.90

Continued on next page...

Continued from previous page...

Mol	Chain	Res	Type	Atoms	Z	Observed(°)	Ideal(°)
2	A	1401[A]	R78	C1-N2-C2	2.59	123.07	113.90
2	A	1401[A]	R78	C4-N1-C1	2.59	120.91	115.95
2	D	1401	R78	C4-N1-C1	2.63	120.97	115.95
2	B	1401	R78	C1-N2-C2	2.75	123.63	113.90

There are no chirality outliers.

There are no torsion outliers.

There are no ring outliers.

5 monomers are involved in 6 short contacts:

Mol	Chain	Res	Type	Clashes	Symm-Clashes
2	A	1401[A]	R78	1	0
2	A	1401[B]	R78	1	0
3	A	1402	EDO	1	0
2	C	1401	R78	2	0
2	D	1401	R78	1	0

5.7 Other polymers [i](#)

There are no such residues in this entry.

5.8 Polymer linkage issues [i](#)

There are no chain breaks in this entry.

6 Fit of model and data ⓘ

6.1 Protein, DNA and RNA chains ⓘ

In the following table, the column labelled ‘#RSRZ> 2’ contains the number (and percentage) of RSRZ outliers, followed by percent RSRZ outliers for the chain as percentile scores relative to all X-ray entries and entries of similar resolution. The OWAB column contains the minimum, median, 95th percentile and maximum values of the occupancy-weighted average B-factor per residue. The column labelled ‘Q< 0.9’ lists the number of (and percentage) of residues with an average occupancy less than 0.9.

Mol	Chain	Analysed	<RSRZ>	#RSRZ>2	OWAB(Å ²)	Q<0.9
1	A	132/145 (91%)	0.35	1 (0%) 87 89	21, 35, 60, 75	0
1	B	131/145 (90%)	0.50	6 (4%) 36 41	24, 39, 63, 72	0
1	C	127/145 (87%)	0.57	7 (5%) 29 32	29, 46, 64, 88	0
1	D	128/145 (88%)	0.75	14 (10%) 7 7	29, 51, 81, 89	0
All	All	518/580 (89%)	0.54	28 (5%) 29 33	21, 43, 69, 89	0

All (28) RSRZ outliers are listed below:

Mol	Chain	Res	Type	RSRZ
1	D	1280	ASP	4.0
1	B	1188	SER	3.6
1	B	1225	ILE	3.3
1	D	1192	LEU	3.3
1	D	1282	GLU	3.2
1	D	1193	LEU	3.0
1	D	1237	ILE	2.9
1	C	1252	LEU	2.8
1	D	1252	LEU	2.8
1	B	1189	ASN	2.8
1	D	1283	GLU	2.6
1	C	1225	ILE	2.5
1	D	1199	ILE	2.4
1	C	1259	GLU	2.3
1	D	1281	ILE	2.3
1	D	1238	LYS	2.2
1	C	1315	ASP	2.2
1	D	1195	GLN	2.2
1	B	1229	ASP	2.2
1	D	1231	ILE	2.2
1	B	1282	GLU	2.2

Continued on next page...

Continued from previous page...

Mol	Chain	Res	Type	RSRZ
1	D	1235	TYR	2.2
1	C	1314	CYS	2.1
1	D	1191	ARG	2.1
1	C	1234	GLU	2.1
1	A	1216	TYR	2.1
1	B	1215	PHE	2.1
1	C	1279	PRO	2.0

6.2 Non-standard residues in protein, DNA, RNA chains [i](#)

There are no non-standard protein/DNA/RNA residues in this entry.

6.3 Carbohydrates [i](#)

There are no carbohydrates in this entry.

6.4 Ligands [i](#)

In the following table, the Atoms column lists the number of modelled atoms in the group and the number defined in the chemical component dictionary. LLDF column lists the quality of electron density of the group with respect to its neighbouring residues in protein, DNA or RNA chains. The B-factors column lists the minimum, median, 95th percentile and maximum values of B factors of atoms in the group. The column labelled 'Q< 0.9' lists the number of atoms with occupancy less than 0.9.

Mol	Type	Chain	Res	Atoms	RSCC	RSR	LLDF	B-factors(Å ²)	Q<0.9
3	EDO	B	1403	4/4	0.68	0.43	11.20	67,67,67,67	0
2	R78	C	1401	29/38	0.82	0.29	2.16	67,79,90,93	0
2	R78	A	1401[A]	29/38	0.87	0.25	1.50	40,45,52,53	29
2	R78	A	1401[B]	29/38	0.87	0.25	1.50	53,58,65,68	29
3	EDO	A	1402	4/4	0.78	0.23	1.02	53,53,53,53	0
2	R78	D	1401	29/38	0.88	0.25	0.49	77,91,100,102	0
2	R78	B	1401	29/38	0.83	0.20	-0.09	47,56,66,68	0
3	EDO	B	1402	4/4	0.80	0.26	-	44,44,44,44	0

6.5 Other polymers [i](#)

There are no such residues in this entry.