



Full wwPDB X-ray Structure Validation Report ⓘ

Feb 1, 2016 – 05:15 AM GMT

PDB ID : 2Q1S
Title : Crystal structure of the Bordetella bronchiseptica enzyme WbmF in complex with NADH
Authors : Harmer, N.J.; King, J.D.; Palmer, C.M.; Maskell, D.; Blundell, T.L.
Deposited on : 2007-05-25
Resolution : 1.50 Å(reported)

This is a Full wwPDB X-ray Structure Validation Report for a publicly released PDB entry.
We welcome your comments at validation@mail.wwpdb.org
A user guide is available at
<http://wwpdb.org/validation/2016/XrayValidationReportHelp>
with specific help available everywhere you see the ⓘ symbol.

The following versions of software and data (see [references ⓘ](#)) were used in the production of this report:

MolProbity : 4.02b-467
Mogul : 1.7 (RC4), CSD as536be (2015)
Xtriage (Phenix) : 1.9-1692
EDS : rb-20026688
Percentile statistics : 20151230.v01 (using entries in the PDB archive December 30th 2015)
Refmac : 5.8.0135
CCP4 : 6.5.0
Ideal geometry (proteins) : Engh & Huber (2001)
Ideal geometry (DNA, RNA) : Parkinson et al. (1996)
Validation Pipeline (wwPDB-VP) : trunk26865

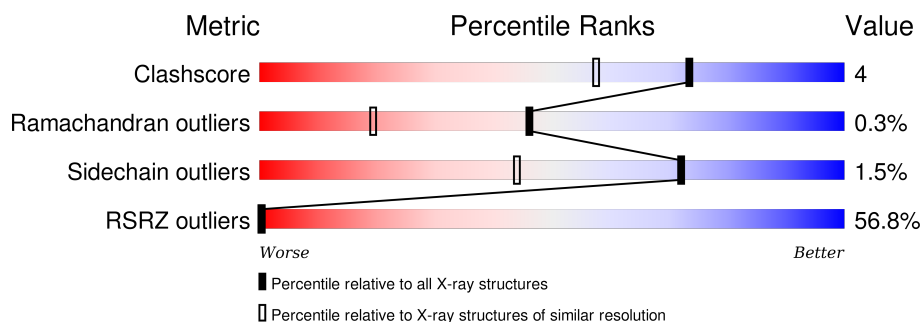
1 Overall quality at a glance

The following experimental techniques were used to determine the structure:

X-RAY DIFFRACTION

The reported resolution of this entry is 1.50 Å.

Percentile scores (ranging between 0-100) for global validation metrics of the entry are shown in the following graphic. The table shows the number of entries on which the scores are based.



Metric	Whole archive (#Entries)	Similar resolution (#Entries, resolution range(Å))
Clashscore	102246	2274 (1.50-1.50)
Ramachandran outliers	100387	2218 (1.50-1.50)
Sidechain outliers	100360	2216 (1.50-1.50)
RSRZ outliers	91569	2075 (1.50-1.50)

The table below summarises the geometric issues observed across the polymeric chains and their fit to the electron density. The red, orange, yellow and green segments on the lower bar indicate the fraction of residues that contain outliers for ≥ 3 , 2, 1 and 0 types of geometric quality criteria. A grey segment represents the fraction of residues that are not modelled. The numeric value for each fraction is indicated below the corresponding segment, with a dot representing fractions $\leq 5\%$. The upper red bar (where present) indicates the fraction of residues that have poor fit to the electron density. The numeric value is given above the bar.

Mol	Chain	Length	Quality of chain
1	A	377	

2 Entry composition

There are 3 unique types of molecules in this entry. The entry contains 2885 atoms, of which 0 are hydrogens and 0 are deuteriums.

In the tables below, the ZeroOcc column contains the number of atoms modelled with zero occupancy, the AltConf column contains the number of residues with at least one atom in alternate conformation and the Trace column contains the number of residues modelled with at most 2 atoms.

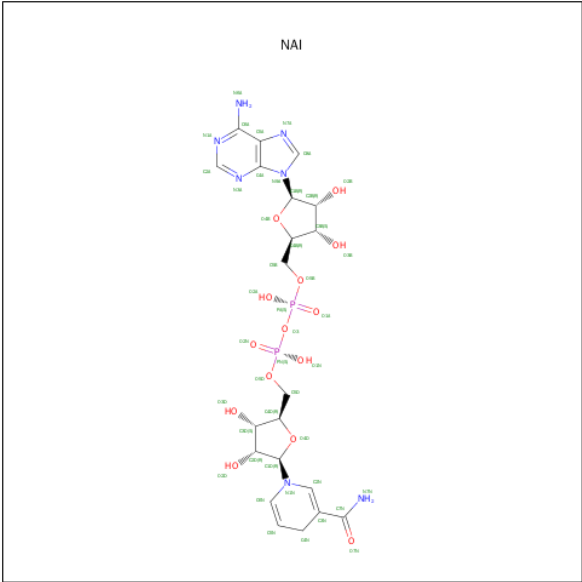
- Molecule 1 is a protein called Putative nucleotide sugar epimerase/ dehydratase.

Mol	Chain	Residues	Atoms					ZeroOcc	AltConf	Trace
1	A	336	Total	C	N	O	S	0	6	0
			2593	1650	447	491	5			

There are 20 discrepancies between the modelled and reference sequences:

Chain	Residue	Modelled	Actual	Comment	Reference
A	-19	MET	-	EXPRESSION TAG	UNP O87989
A	-18	GLY	-	EXPRESSION TAG	UNP O87989
A	-17	SER	-	EXPRESSION TAG	UNP O87989
A	-16	SER	-	EXPRESSION TAG	UNP O87989
A	-15	HIS	-	EXPRESSION TAG	UNP O87989
A	-14	HIS	-	EXPRESSION TAG	UNP O87989
A	-13	HIS	-	EXPRESSION TAG	UNP O87989
A	-12	HIS	-	EXPRESSION TAG	UNP O87989
A	-11	HIS	-	EXPRESSION TAG	UNP O87989
A	-10	HIS	-	EXPRESSION TAG	UNP O87989
A	-9	SER	-	EXPRESSION TAG	UNP O87989
A	-8	SER	-	EXPRESSION TAG	UNP O87989
A	-7	GLY	-	EXPRESSION TAG	UNP O87989
A	-6	LEU	-	EXPRESSION TAG	UNP O87989
A	-5	VAL	-	EXPRESSION TAG	UNP O87989
A	-4	PRO	-	EXPRESSION TAG	UNP O87989
A	-3	ARG	-	EXPRESSION TAG	UNP O87989
A	-2	GLY	-	EXPRESSION TAG	UNP O87989
A	-1	SER	-	EXPRESSION TAG	UNP O87989
A	0	HIS	-	EXPRESSION TAG	UNP O87989

- Molecule 2 is 1,4-DIHYDRONICOTINAMIDE ADENINE DINUCLEOTIDE (three-letter code: NAI) (formula: C₂₁H₂₉N₇O₁₄P₂).



Mol	Chain	Residues	Atoms					ZeroOcc	AltConf
2	A	1	Total	C	N	O	P	0	0
			44	21	7	14	2		

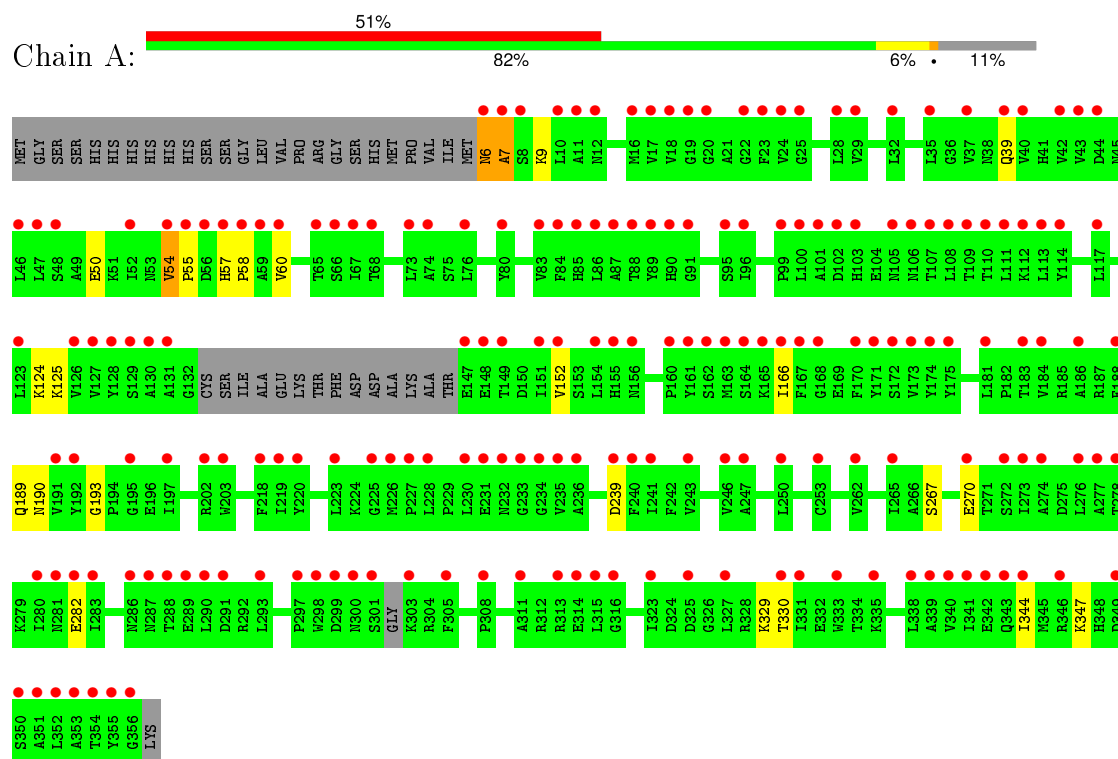
- Molecule 3 is water.

Mol	Chain	Residues	Atoms		ZeroOcc	AltConf
3	A	248	Total	O	0	0
			248	248		

3 Residue-property plots [i](#)

These plots are drawn for all protein, RNA and DNA chains in the entry. The first graphic for a chain summarises the proportions of errors displayed in the second graphic. The second graphic shows the sequence view annotated by issues in geometry and electron density. Residues are color-coded according to the number of geometric quality criteria for which they contain at least one outlier: green = 0, yellow = 1, orange = 2 and red = 3 or more. A red dot above a residue indicates a poor fit to the electron density ($RSRZ > 2$). Stretches of 2 or more consecutive residues without any outlier are shown as a green connector. Residues present in the sample, but not in the model, are shown in grey.

- Molecule 1: Putative nucleotide sugar epimerase/ dehydratase



4 Data and refinement statistics

Property	Value	Source
Space group	C 1 2 1	Depositor
Cell constants a, b, c, α , β , γ	83.19Å 77.88Å 59.41Å 90.00° 108.19° 90.00°	Depositor
Resolution (Å)	38.52 – 1.50 38.51 – 1.50	Depositor EDS
% Data completeness (in resolution range)	99.2 (38.52-1.50) 99.2 (38.51-1.50)	Depositor EDS
R_{merge}	0.05	Depositor
R_{sym}	(Not available)	Depositor
$\langle I/\sigma(I) \rangle$ ¹	1.40 (at 1.50Å)	Xtriage
Refinement program	REFMAC 5.0	Depositor
R, R_{free}	0.192 , 0.226 0.185 , (Not available)	Depositor DCC
R_{free} test set	No test flags present.	DCC
Wilson B-factor (Å ²)	31.1	Xtriage
Anisotropy	0.071	Xtriage
Bulk solvent k_{sol} (e/Å ³), B_{sol} (Å ²)	0.30 , 34.8	EDS
Estimated twinning fraction	No twinning to report.	Xtriage
L-test for twinning ²	$\langle L \rangle = 0.51$, $\langle L^2 \rangle = 0.34$	Xtriage
Outliers	0 of 57181 reflections	Xtriage
F_o, F_c correlation	0.95	EDS
Total number of atoms	2885	wwPDB-VP
Average B, all atoms (Å ²)	44.0	wwPDB-VP

Xtriage's analysis on translational NCS is as follows: *The largest off-origin peak in the Patterson function is 6.25% of the height of the origin peak. No significant pseudotranslation is detected.*

¹Intensities estimated from amplitudes.

²Theoretical values of $\langle |L| \rangle$, $\langle L^2 \rangle$ for acentric reflections are 0.5, 0.375 respectively for untwinned datasets, and 0.333, 0.2 for perfectly twinned datasets.

5 Model quality [i](#)

5.1 Standard geometry [i](#)

Bond lengths and bond angles in the following residue types are not validated in this section: NAI

The Z score for a bond length (or angle) is the number of standard deviations the observed value is removed from the expected value. A bond length (or angle) with $|Z| > 5$ is considered an outlier worth inspection. RMSZ is the root-mean-square of all Z scores of the bond lengths (or angles).

Mol	Chain	Bond lengths		Bond angles	
		RMSZ	$\# Z > 5$	RMSZ	$\# Z > 5$
1	A	0.67	1/2666 (0.0%)	0.73	0/3625

Chiral center outliers are detected by calculating the chiral volume of a chiral center and verifying if the center is modelled as a planar moiety or with the opposite hand. A planarity outlier is detected by checking planarity of atoms in a peptide group, atoms in a mainchain group or atoms of a sidechain that are expected to be planar.

Mol	Chain	#Chirality outliers	#Planarity outliers
1	A	0	1

All (1) bond length outliers are listed below:

Mol	Chain	Res	Type	Atoms	Z	Observed(Å)	Ideal(Å)
1	A	270	GLU	CD-OE2	7.72	1.34	1.25

There are no bond angle outliers.

There are no chirality outliers.

All (1) planarity outliers are listed below:

Mol	Chain	Res	Type	Group
1	A	6	ASN	Peptide

5.2 Too-close contacts [i](#)

In the following table, the Non-H and H(model) columns list the number of non-hydrogen atoms and hydrogen atoms in the chain respectively. The H(added) column lists the number of hydrogen atoms added and optimized by MolProbity. The Clashes column lists the number of clashes within the asymmetric unit, whereas Symm-Clashes lists symmetry related clashes.

Mol	Chain	Non-H	H(model)	H(added)	Clashes	Symm-Clashes
1	A	2593	0	2522	21	0
2	A	44	0	27	1	0
3	A	248	0	0	8	0
All	All	2885	0	2549	21	0

The all-atom clashscore is defined as the number of clashes found per 1000 atoms (including hydrogen atoms). The all-atom clashscore for this structure is 4.

All (21) close contacts within the same asymmetric unit are listed below, sorted by their clash magnitude.

Atom-1	Atom-2	Interatomic distance (Å)	Clash overlap (Å)
1:A:39[B]:GLN:NE2	3:A:502:HOH:O	1.94	0.98
1:A:239[B]:ASP:OD1	3:A:600:HOH:O	1.81	0.98
1:A:239[A]:ASP:OD1	1:A:267:SER:OG	2.08	0.69
1:A:7:ALA:HB1	1:A:9:LYS:H	1.59	0.67
1:A:7:ALA:HB2	3:A:567:HOH:O	1.99	0.61
1:A:190:ASN:ND2	3:A:600:HOH:O	1.97	0.60
1:A:6:ASN:HA	3:A:413:HOH:O	2.02	0.58
1:A:6:ASN:N	3:A:466:HOH:O	2.38	0.56
1:A:6:ASN:O	1:A:7:ALA:CB	2.56	0.54
1:A:54:VAL:O	1:A:54:VAL:HG22	2.06	0.54
1:A:7:ALA:CB	1:A:9:LYS:H	2.23	0.52
1:A:189:GLN:HA	2:A:358:NAI:H42N	1.94	0.49
1:A:6:ASN:O	1:A:7:ALA:HB2	2.13	0.48
1:A:329:LYS:NZ	3:A:563:HOH:O	2.48	0.46
1:A:193:GLY:HA2	1:A:330:THR:OG1	2.17	0.44
1:A:55:PRO:HG2	1:A:60:VAL:HG21	2.01	0.42
1:A:344:ILE:O	1:A:347:LYS:HG2	2.20	0.41
1:A:57:HIS:ND1	1:A:58:PRO:HD2	2.35	0.41
1:A:50:GLU:HG3	1:A:344:ILE:HD13	2.03	0.41
1:A:6:ASN:CA	3:A:413:HOH:O	2.66	0.41
1:A:152[A]:VAL:HG11	1:A:166:ILE:HD13	2.04	0.40

There are no symmetry-related clashes.

5.3 Torsion angles ⓘ

5.3.1 Protein backbone ⓘ

In the following table, the Percentiles column shows the percent Ramachandran outliers of the chain as a percentile score with respect to all X-ray entries followed by that with respect to entries of similar resolution.

The Analysed column shows the number of residues for which the backbone conformation was analysed, and the total number of residues.

Mol	Chain	Analysed	Favoured	Allowed	Outliers	Percentiles	
1	A	336/377 (89%)	331 (98%)	4 (1%)	1 (0%)	46	19

All (1) Ramachandran outliers are listed below:

Mol	Chain	Res	Type
1	A	7	ALA

5.3.2 Protein sidechains ⓘ

In the following table, the Percentiles column shows the percent sidechain outliers of the chain as a percentile score with respect to all X-ray entries followed by that with respect to entries of similar resolution.

The Analysed column shows the number of residues for which the sidechain conformation was analysed, and the total number of residues.

Mol	Chain	Analysed	Rotameric	Outliers	Percentiles	
1	A	269/315 (85%)	265 (98%)	4 (2%)	72	44

All (4) residues with a non-rotameric sidechain are listed below:

Mol	Chain	Res	Type
1	A	54	VAL
1	A	124	LYS
1	A	125	LYS
1	A	282	GLU

Some sidechains can be flipped to improve hydrogen bonding and reduce clashes. All (1) such sidechains are listed below:

Mol	Chain	Res	Type
1	A	178	GLN

5.3.3 RNA ⓘ

There are no RNA molecules in this entry.

5.4 Non-standard residues in protein, DNA, RNA chains ⓘ

There are no non-standard protein/DNA/RNA residues in this entry.

5.5 Carbohydrates ⓘ

There are no carbohydrates in this entry.

5.6 Ligand geometry ⓘ

1 ligand is modelled in this entry.

In the following table, the Counts columns list the number of bonds (or angles) for which Mogul statistics could be retrieved, the number of bonds (or angles) that are observed in the model and the number of bonds (or angles) that are defined in the chemical component dictionary. The Link column lists molecule types, if any, to which the group is linked. The Z score for a bond length (or angle) is the number of standard deviations the observed value is removed from the expected value. A bond length (or angle) with $|Z| > 2$ is considered an outlier worth inspection. RMSZ is the root-mean-square of all Z scores of the bond lengths (or angles).

Mol	Type	Chain	Res	Link	Bond lengths			Bond angles		
					Counts	RMSZ	$\# Z > 2$	Counts	RMSZ	$\# Z > 2$
2	NAI	A	358	-	38,48,48	1.42	6 (15%)	48,73,73	1.41	6 (12%)

In the following table, the Chirals column lists the number of chiral outliers, the number of chiral centers analysed, the number of these observed in the model and the number defined in the chemical component dictionary. Similar counts are reported in the Torsion and Rings columns. '-' means no outliers of that kind were identified.

Mol	Type	Chain	Res	Link	Chirals	Torsions	Rings
2	NAI	A	358	-	-	0/25/72/72	0/5/5/5

All (6) bond length outliers are listed below:

Mol	Chain	Res	Type	Atoms	Z	Observed(Å)	Ideal(Å)
2	A	358	NAI	C4N-C5N	-2.84	1.42	1.49
2	A	358	NAI	PN-O1N	-2.32	1.45	1.54
2	A	358	NAI	C2N-C3N	2.03	1.39	1.34
2	A	358	NAI	O4B-C1B	2.92	1.44	1.41
2	A	358	NAI	C6N-C5N	3.38	1.39	1.33
2	A	358	NAI	C5A-C4A	3.72	1.48	1.40

All (6) bond angle outliers are listed below:

Mol	Chain	Res	Type	Atoms	Z	Observed(°)	Ideal(°)
2	A	358	NAI	C4A-C5A-N7A	-5.28	104.63	109.48
2	A	358	NAI	C1B-N9A-C4A	-2.99	122.44	126.94
2	A	358	NAI	C4B-O4B-C1B	-2.95	106.47	109.72
2	A	358	NAI	N3A-C2A-N1A	-2.70	126.83	128.89
2	A	358	NAI	O4D-C1D-C2D	-2.28	101.30	106.58
2	A	358	NAI	O1N-PN-O2N	2.07	123.77	112.53

There are no chirality outliers.

There are no torsion outliers.

There are no ring outliers.

1 monomer is involved in 1 short contact:

Mol	Chain	Res	Type	Clashes	Symm-Clashes
2	A	358	NAI	1	0

5.7 Other polymers [i](#)

There are no such residues in this entry.

5.8 Polymer linkage issues [i](#)

There are no chain breaks in this entry.

6 Fit of model and data ⓘ

6.1 Protein, DNA and RNA chains ⓘ

In the following table, the column labelled ‘#RSRZ> 2’ contains the number (and percentage) of RSRZ outliers, followed by percent RSRZ outliers for the chain as percentile scores relative to all X-ray entries and entries of similar resolution. The OWAB column contains the minimum, median, 95th percentile and maximum values of the occupancy-weighted average B-factor per residue. The column labelled ‘Q< 0.9’ lists the number of (and percentage) of residues with an average occupancy less than 0.9.

Mol	Chain	Analysed	<RSRZ>	#RSRZ>2	OWAB(Å ²)	Q<0.9
1	A	336/377 (89%)	2.87	191 (56%) 0 0	23, 44, 63, 71	0

All (191) RSRZ outliers are listed below:

Mol	Chain	Res	Type	RSRZ
1	A	6	ASN	11.2
1	A	167	PHE	10.4
1	A	274	ALA	9.9
1	A	111	LEU	9.7
1	A	108	LEU	9.3
1	A	7	ALA	8.8
1	A	288	THR	8.4
1	A	171	TYR	8.3
1	A	8	SER	7.9
1	A	354	THR	7.6
1	A	113	LEU	7.5
1	A	86	LEU	7.4
1	A	227	PRO	7.2
1	A	339	ALA	6.8
1	A	87	ALA	6.7
1	A	107	THR	6.7
1	A	161	TYR	6.6
1	A	170	PHE	6.6
1	A	305	PHE	6.6
1	A	67	ILE	6.5
1	A	100	LEU	6.5
1	A	114	TYR	6.3
1	A	128	TYR	6.3
1	A	18	VAL	6.3
1	A	24	VAL	6.1
1	A	166	ILE	6.0
1	A	287[A]	ASN	5.9

Continued on next page...

Continued from previous page...

Mol	Chain	Res	Type	RSRZ
1	A	88	THR	5.9
1	A	154	LEU	5.8
1	A	110	THR	5.8
1	A	181	LEU	5.8
1	A	353	ALA	5.8
1	A	89	TYR	5.7
1	A	151	ILE	5.7
1	A	230	LEU	5.7
1	A	96	ILE	5.6
1	A	84	PHE	5.6
1	A	298	TRP	5.5
1	A	109	THR	5.5
1	A	352	LEU	5.5
1	A	54	VAL	5.5
1	A	126	VAL	5.3
1	A	23	PHE	5.2
1	A	83	VAL	5.2
1	A	56	ASP	5.2
1	A	43	VAL	5.0
1	A	127	VAL	5.0
1	A	191	VAL	5.0
1	A	32	LEU	4.9
1	A	175	TYR	4.8
1	A	163	MET	4.8
1	A	76	LEU	4.8
1	A	28	LEU	4.8
1	A	262	VAL	4.7
1	A	55	PRO	4.6
1	A	290	LEU	4.6
1	A	164	SER	4.6
1	A	241	ILE	4.6
1	A	246	VAL	4.5
1	A	37	VAL	4.5
1	A	106	ASN	4.5
1	A	276	LEU	4.5
1	A	40	VAL	4.4
1	A	42	VAL	4.4
1	A	344	ILE	4.4
1	A	188	PHE	4.4
1	A	346	ARG	4.3
1	A	47	LEU	4.3
1	A	291	ASP	4.3

Continued on next page...

Continued from previous page...

Mol	Chain	Res	Type	RSRZ
1	A	283	ILE	4.2
1	A	350	SER	4.2
1	A	148	GLU	4.1
1	A	231	GLU	4.1
1	A	165	LYS	4.1
1	A	351	ALA	4.1
1	A	103	HIS	4.1
1	A	184	VAL	4.0
1	A	331	ILE	4.0
1	A	355	TYR	4.0
1	A	160	PRO	4.0
1	A	232	ASN	4.0
1	A	99	PRO	3.9
1	A	149	THR	3.9
1	A	39[A]	GLN	3.9
1	A	327	LEU	3.9
1	A	243	VAL	3.9
1	A	341	ILE	3.8
1	A	105	ASN	3.8
1	A	301	SER	3.8
1	A	85	HIS	3.8
1	A	117	LEU	3.8
1	A	155	HIS	3.8
1	A	315	LEU	3.7
1	A	223	LEU	3.7
1	A	174	TYR	3.7
1	A	129	SER	3.6
1	A	156	ASN	3.6
1	A	280	ILE	3.6
1	A	130	ALA	3.5
1	A	73	LEU	3.5
1	A	253	CYS	3.5
1	A	192	TYR	3.5
1	A	250	LEU	3.5
1	A	147	GLU	3.5
1	A	225	GLY	3.5
1	A	112	LYS	3.5
1	A	101	ALA	3.4
1	A	220	TYR	3.4
1	A	123	LEU	3.4
1	A	162[A]	SER	3.4
1	A	59	ALA	3.4

Continued on next page...

Continued from previous page...

Mol	Chain	Res	Type	RSRZ
1	A	297	PRO	3.4
1	A	343	GLN	3.4
1	A	219	ILE	3.3
1	A	152[A]	VAL	3.3
1	A	168	GLY	3.3
1	A	270	GLU	3.2
1	A	325	ASP	3.2
1	A	273	ILE	3.2
1	A	338	LEU	3.2
1	A	340	VAL	3.2
1	A	58	PRO	3.2
1	A	316	GLY	3.1
1	A	303	LYS	3.1
1	A	333	TRP	3.1
1	A	131	ALA	3.1
1	A	60	VAL	3.0
1	A	278	THR	3.0
1	A	277	ALA	3.0
1	A	57	HIS	3.0
1	A	25	GLY	2.9
1	A	234	GLY	2.9
1	A	29	VAL	2.9
1	A	240	PHE	2.9
1	A	203	TRP	2.9
1	A	80	TYR	2.8
1	A	286	ASN	2.8
1	A	90	HIS	2.8
1	A	311	ALA	2.8
1	A	313	ARG	2.8
1	A	226	MET	2.7
1	A	323	ILE	2.7
1	A	35	LEU	2.7
1	A	173	VAL	2.7
1	A	299	ASP	2.7
1	A	172	SER	2.7
1	A	17	VAL	2.7
1	A	20	GLY	2.7
1	A	48	SER	2.6
1	A	74	ALA	2.6
1	A	342	GLU	2.6
1	A	235	VAL	2.6
1	A	22	GLY	2.6

Continued on next page...

Continued from previous page...

Mol	Chain	Res	Type	RSRZ
1	A	197	ILE	2.6
1	A	233	GLY	2.6
1	A	195	GLY	2.6
1	A	16	MET	2.5
1	A	19	GLY	2.5
1	A	102	ASP	2.5
1	A	12	ASN	2.5
1	A	218	PHE	2.5
1	A	65	THR	2.4
1	A	46	LEU	2.4
1	A	228	LEU	2.4
1	A	66	SER	2.4
1	A	95	SER	2.4
1	A	183	THR	2.4
1	A	356	GLY	2.4
1	A	281	ASN	2.4
1	A	308	PRO	2.3
1	A	202	ARG	2.3
1	A	68	THR	2.3
1	A	289	GLU	2.3
1	A	10	LEU	2.2
1	A	300	ASN	2.2
1	A	265	ILE	2.2
1	A	282	GLU	2.2
1	A	335	LYS	2.2
1	A	91	GLY	2.2
1	A	186	ALA	2.2
1	A	236	ALA	2.2
1	A	11	ALA	2.1
1	A	293	LEU	2.1
1	A	239[A]	ASP	2.1
1	A	330	THR	2.1
1	A	314	GLU	2.1
1	A	247	ALA	2.1
1	A	349	ASP	2.1
1	A	272	SER	2.0
1	A	44	ASP	2.0
1	A	52	ILE	2.0

6.2 Non-standard residues in protein, DNA, RNA chains ⓘ

There are no non-standard protein/DNA/RNA residues in this entry.

6.3 Carbohydrates [i](#)

There are no carbohydrates in this entry.

6.4 Ligands [i](#)

In the following table, the Atoms column lists the number of modelled atoms in the group and the number defined in the chemical component dictionary. LLDF column lists the quality of electron density of the group with respect to its neighbouring residues in protein, DNA or RNA chains. The B-factors column lists the minimum, median, 95th percentile and maximum values of B factors of atoms in the group. The column labelled 'Q< 0.9' lists the number of atoms with occupancy less than 0.9.

Mol	Type	Chain	Res	Atoms	RSCC	RSR	LLDF	B-factors(\AA^2)	Q<0.9
2	NAI	A	358	44/44	0.95	0.12	-2.02	23,26,31,33	0

6.5 Other polymers [i](#)

There are no such residues in this entry.