



Full wwPDB X-ray Structure Validation Report ⓘ

Feb 1, 2016 – 05:18 AM GMT

PDB ID : 2Q6C
Title : Design and synthesis of novel, conformationally restricted HMG-COA reductase inhibitors
Authors : Pavlovsky, A.; Pfefferkorn, J.A.; Harris, M.S.; Finzel, B.C.
Deposited on : 2007-06-04
Resolution : 2.00 Å(reported)

This is a Full wwPDB X-ray Structure Validation Report for a publicly released PDB entry.
We welcome your comments at validation@mail.wwpdb.org
A user guide is available at
<http://wwpdb.org/validation/2016/XrayValidationReportHelp>
with specific help available everywhere you see the ⓘ symbol.

The following versions of software and data (see [references ⓘ](#)) were used in the production of this report:

MolProbity : 4.02b-467
Mogul : 1.7 (RC4), CSD as536be (2015)
Xtriage (Phenix) : 1.9-1692
EDS : rb-20026688
Percentile statistics : 20151230.v01 (using entries in the PDB archive December 30th 2015)
Refmac : 5.8.0135
CCP4 : 6.5.0
Ideal geometry (proteins) : Engh & Huber (2001)
Ideal geometry (DNA, RNA) : Parkinson et al. (1996)
Validation Pipeline (wwPDB-VP) : trunk26865

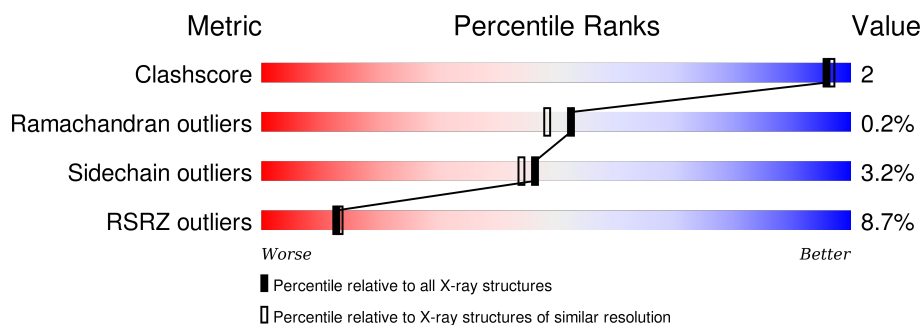
1 Overall quality at a glance

The following experimental techniques were used to determine the structure:

X-RAY DIFFRACTION

The reported resolution of this entry is 2.00 Å.

Percentile scores (ranging between 0-100) for global validation metrics of the entry are shown in the following graphic. The table shows the number of entries on which the scores are based.



Metric	Whole archive (#Entries)	Similar resolution (#Entries, resolution range(Å))
Clashscore	102246	7340 (2.00-2.00)
Ramachandran outliers	100387	7248 (2.00-2.00)
Sidechain outliers	100360	7247 (2.00-2.00)
RSRZ outliers	91569	6262 (2.00-2.00)

The table below summarises the geometric issues observed across the polymeric chains and their fit to the electron density. The red, orange, yellow and green segments on the lower bar indicate the fraction of residues that contain outliers for ≥ 3 , 2, 1 and 0 types of geometric quality criteria. A grey segment represents the fraction of residues that are not modelled. The numeric value for each fraction is indicated below the corresponding segment, with a dot representing fractions $\leq 5\%$. The upper red bar (where present) indicates the fraction of residues that have poor fit to the electron density. The numeric value is given above the bar.

Mol	Chain	Length	Quality of chain
1	A	441	<div> <div>5%</div> <div>88% 7% 5%</div> </div>
1	B	441	<div> <div>10%</div> <div>89% 5% 5%</div> </div>
1	C	441	<div> <div>8%</div> <div>88% 5% 6%</div> </div>
1	D	441	<div> <div>9%</div> <div>89% 5% 6%</div> </div>

2 Entry composition

There are 4 unique types of molecules in this entry. The entry contains 13720 atoms, of which 0 are hydrogens and 0 are deuteriums.

In the tables below, the ZeroOcc column contains the number of atoms modelled with zero occupancy, the AltConf column contains the number of residues with at least one atom in alternate conformation and the Trace column contains the number of residues modelled with at most 2 atoms.

- Molecule 1 is a protein called 3-hydroxy-3-methylglutaryl-coenzyme A reductase.

Mol	Chain	Residues	Atoms					ZeroOcc	AltConf	Trace
1	A	421	Total	C	N	O	S	0	6	0
			3133	1951	551	601	30			
1	B	420	Total	C	N	O	S	0	8	0
			3127	1947	548	602	30			
1	C	414	Total	C	N	O	S	0	8	0
			3079	1918	541	590	30			
1	D	413	Total	C	N	O	S	0	6	0
			3077	1916	541	590	30			

There are 28 discrepancies between the modelled and reference sequences:

Chain	Residue	Modelled	Actual	Comment	Reference
A	435	HIS	-	EXPRESSION TAG	UNP P04035
A	436	HIS	-	EXPRESSION TAG	UNP P04035
A	437	HIS	-	EXPRESSION TAG	UNP P04035
A	438	HIS	-	EXPRESSION TAG	UNP P04035
A	439	HIS	-	EXPRESSION TAG	UNP P04035
A	440	HIS	-	EXPRESSION TAG	UNP P04035
A	485	ILE	MET	ENGINEERED	UNP P04035
B	435	HIS	-	EXPRESSION TAG	UNP P04035
B	436	HIS	-	EXPRESSION TAG	UNP P04035
B	437	HIS	-	EXPRESSION TAG	UNP P04035
B	438	HIS	-	EXPRESSION TAG	UNP P04035
B	439	HIS	-	EXPRESSION TAG	UNP P04035
B	440	HIS	-	EXPRESSION TAG	UNP P04035
B	485	ILE	MET	ENGINEERED	UNP P04035
C	435	HIS	-	EXPRESSION TAG	UNP P04035
C	436	HIS	-	EXPRESSION TAG	UNP P04035
C	437	HIS	-	EXPRESSION TAG	UNP P04035
C	438	HIS	-	EXPRESSION TAG	UNP P04035
C	439	HIS	-	EXPRESSION TAG	UNP P04035
C	440	HIS	-	EXPRESSION TAG	UNP P04035
C	485	ILE	MET	ENGINEERED	UNP P04035

Continued on next page...

Continued from previous page...

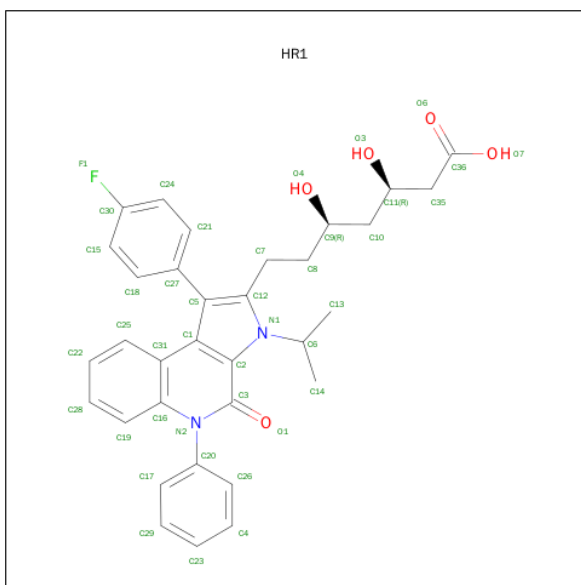
Chain	Residue	Modelled	Actual	Comment	Reference
D	435	HIS	-	EXPRESSION TAG	UNP P04035
D	436	HIS	-	EXPRESSION TAG	UNP P04035
D	437	HIS	-	EXPRESSION TAG	UNP P04035
D	438	HIS	-	EXPRESSION TAG	UNP P04035
D	439	HIS	-	EXPRESSION TAG	UNP P04035
D	440	HIS	-	EXPRESSION TAG	UNP P04035
D	485	ILE	MET	ENGINEERED	UNP P04035

- Molecule 2 is SULFATE ION (three-letter code: SO4) (formula: O₄S).



Mol	Chain	Residues	Atoms	ZeroOcc	AltConf
2	A	1	Total O S 5 4 1	0	0
2	B	1	Total O S 5 4 1	0	0
2	C	1	Total O S 5 4 1	0	0
2	D	1	Total O S 5 4 1	0	0

- Molecule 3 is (3R,5R)-7-[1-(4-FLUOROPHENYL)-3-ISOPROPYL-4-OXO-5-PHENYL-4,5-DIHYDRO-3H-PYRROLO[2,3-C]QUINOLIN-2-YL]-3,5-DIHYDROXYHEPTANOIC ACID (three-letter code: HR1) (formula: C₃₃H₃₃FN₂O₅).



Mol	Chain	Residues	Atoms					ZeroOcc	AltConf
3	B	1	Total 41	C 33	F 1	N 2	O 5	0	0
3	A	1	Total 41	C 33	F 1	N 2	O 5	0	0
3	D	1	Total 41	C 33	F 1	N 2	O 5	0	0
3	C	1	Total 41	C 33	F 1	N 2	O 5	0	0

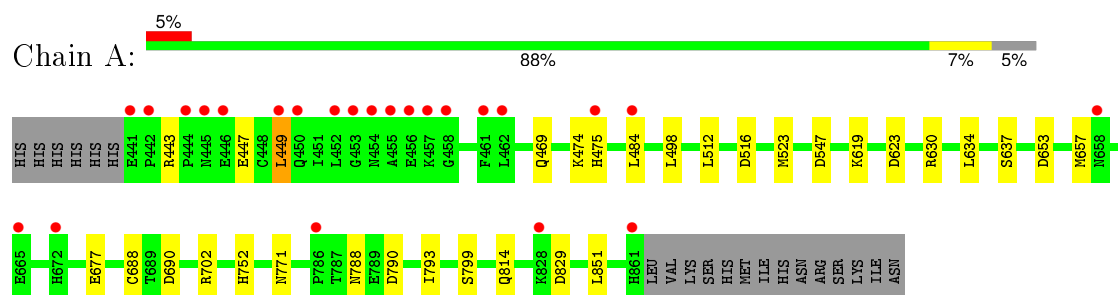
- Molecule 4 is water.

Mol	Chain	Residues	Atoms	ZeroOcc	AltConf
4	A	253	Total O 253 253	0	0
4	B	295	Total O 295 295	0	0
4	C	282	Total O 282 282	0	0
4	D	290	Total O 290 290	0	0

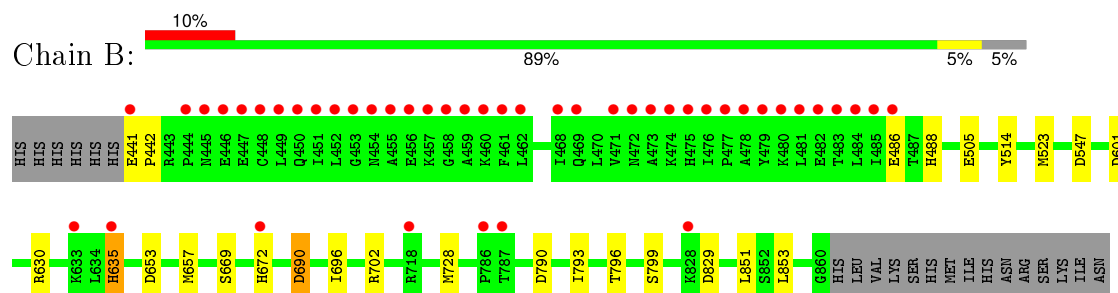
3 Residue-property plots [i](#)

These plots are drawn for all protein, RNA and DNA chains in the entry. The first graphic for a chain summarises the proportions of errors displayed in the second graphic. The second graphic shows the sequence view annotated by issues in geometry and electron density. Residues are color-coded according to the number of geometric quality criteria for which they contain at least one outlier: green = 0, yellow = 1, orange = 2 and red = 3 or more. A red dot above a residue indicates a poor fit to the electron density ($RSRZ > 2$). Stretches of 2 or more consecutive residues without any outlier are shown as a green connector. Residues present in the sample, but not in the model, are shown in grey.

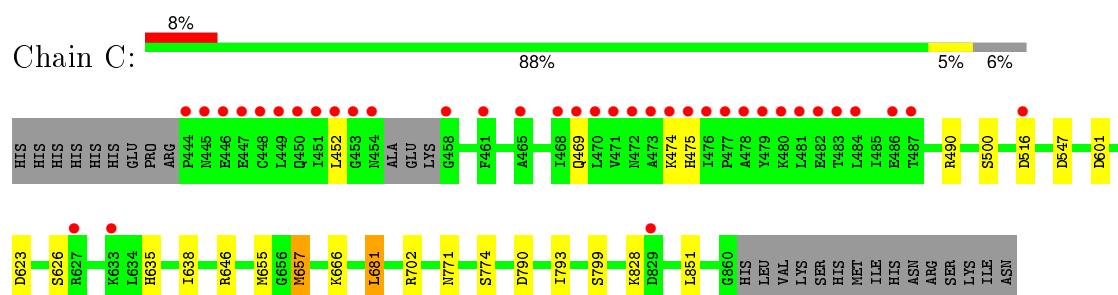
- Molecule 1: 3-hydroxy-3-methylglutaryl-coenzyme A reductase



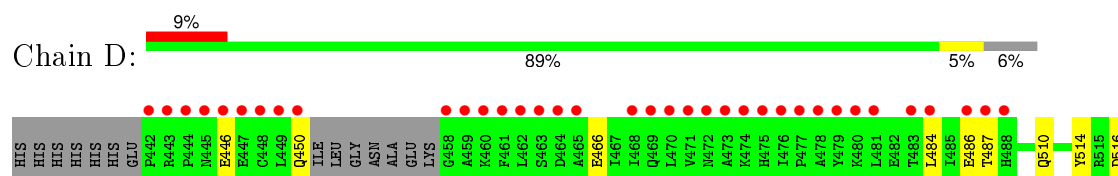
- Molecule 1: 3-hydroxy-3-methylglutaryl-coenzyme A reductase



- Molecule 1: 3-hydroxy-3-methylglutaryl-coenzyme A reductase



- Molecule 1: 3-hydroxy-3-methylglutaryl-coenzyme A reductase





4 Data and refinement statistics

Property	Value	Source
Space group	P 1 21 1	Depositor
Cell constants a, b, c, α , β , γ	82.82Å 135.37Å 83.12Å 90.00° 97.02° 90.00°	Depositor
Resolution (Å)	50.00 – 2.00 41.10 – 2.00	Depositor EDS
% Data completeness (in resolution range)	(Not available) (50.00-2.00) 91.1 (41.10-2.00)	Depositor EDS
R_{merge}	0.05	Depositor
R_{sym}	(Not available)	Depositor
$\langle I/\sigma(I) \rangle$ ¹	3.64 (at 2.00Å)	Xtriage
Refinement program	REFMAC 5.1.24	Depositor
R, R_{free}	0.217 , 0.252 0.221 , (Not available)	Depositor DCC
R_{free} test set	No test flags present.	DCC
Wilson B-factor (Å ²)	26.0	Xtriage
Anisotropy	0.193	Xtriage
Bulk solvent k_{sol} (e/Å ³), B_{sol} (Å ²)	(Not available) , (Not available)	EDS
Estimated twinning fraction	0.085 for l,-k,h	Xtriage
L-test for twinning ²	$\langle L \rangle = 0.50$, $\langle L^2 \rangle = 0.33$	Xtriage
Outliers	0 of 116802 reflections	Xtriage
F_o, F_c correlation	0.93	EDS
Total number of atoms	13720	wwPDB-VP
Average B, all atoms (Å ²)	30.0	wwPDB-VP

Xtriage's analysis on translational NCS is as follows: *The largest off-origin peak in the Patterson function is 3.69% of the height of the origin peak. No significant pseudotranslation is detected.*

¹ Intensities estimated from amplitudes.

² Theoretical values of $\langle |L| \rangle$, $\langle L^2 \rangle$ for acentric reflections are 0.5, 0.375 respectively for untwinned datasets, and 0.333, 0.2 for perfectly twinned datasets.

5 Model quality

5.1 Standard geometry

Bond lengths and bond angles in the following residue types are not validated in this section: HR1, SO4

The Z score for a bond length (or angle) is the number of standard deviations the observed value is removed from the expected value. A bond length (or angle) with $|Z| > 5$ is considered an outlier worth inspection. RMSZ is the root-mean-square of all Z scores of the bond lengths (or angles).

Mol	Chain	Bond lengths		Bond angles	
		RMSZ	$\# Z > 5$	RMSZ	$\# Z > 5$
1	A	0.27	0/3179	0.57	7/4298 (0.2%)
1	B	0.27	0/3177	0.56	6/4295 (0.1%)
1	C	0.27	0/3127	0.56	5/4225 (0.1%)
1	D	0.27	0/3127	0.57	5/4226 (0.1%)
All	All	0.27	0/12610	0.57	23/17044 (0.1%)

There are no bond length outliers.

All (23) bond angle outliers are listed below:

Mol	Chain	Res	Type	Atoms	Z	Observed(°)	Ideal(°)
1	B	547	ASP	CB-CG-OD2	5.62	123.36	118.30
1	C	547	ASP	CB-CG-OD2	5.57	123.31	118.30
1	A	547	ASP	CB-CG-OD2	5.49	123.24	118.30
1	A	690	ASP	CB-CG-OD2	5.49	123.24	118.30
1	A	790	ASP	CB-CG-OD2	5.45	123.21	118.30
1	D	623	ASP	CB-CG-OD2	5.45	123.20	118.30
1	A	623	ASP	CB-CG-OD2	5.43	123.19	118.30
1	C	623	ASP	CB-CG-OD2	5.42	123.17	118.30
1	A	653	ASP	CB-CG-OD2	5.31	123.08	118.30
1	D	547	ASP	CB-CG-OD2	5.29	123.06	118.30
1	B	690	ASP	CB-CG-OD2	5.27	123.05	118.30
1	C	790	ASP	CB-CG-OD2	5.26	123.04	118.30
1	B	790	ASP	CB-CG-OD2	5.26	123.03	118.30
1	B	601	ASP	CB-CG-OD2	5.22	123.00	118.30
1	D	690	ASP	CB-CG-OD2	5.18	122.96	118.30
1	D	829	ASP	CB-CG-OD2	5.17	122.96	118.30
1	D	516	ASP	CB-CG-OD2	5.17	122.96	118.30
1	C	516	ASP	CB-CG-OD2	5.15	122.94	118.30
1	A	516	ASP	CB-CG-OD2	5.11	122.90	118.30
1	A	829	ASP	CB-CG-OD2	5.11	122.90	118.30

Continued on next page...

Continued from previous page...

Mol	Chain	Res	Type	Atoms	Z	Observed(°)	Ideal(°)
1	C	601	ASP	CB-CG-OD2	5.07	122.86	118.30
1	B	829	ASP	CB-CG-OD2	5.03	122.83	118.30
1	B	653	ASP	CB-CG-OD2	5.02	122.82	118.30

There are no chirality outliers.

There are no planarity outliers.

5.2 Too-close contacts

In the following table, the Non-H and H(model) columns list the number of non-hydrogen atoms and hydrogen atoms in the chain respectively. The H(added) column lists the number of hydrogen atoms added and optimized by MolProbity. The Clashes column lists the number of clashes within the asymmetric unit, whereas Symm-Clashes lists symmetry related clashes.

Mol	Chain	Non-H	H(model)	H(added)	Clashes	Symm-Clashes
1	A	3133	0	3155	5	0
1	B	3127	0	3148	11	0
1	C	3079	0	3105	7	0
1	D	3077	0	3098	7	0
2	A	5	0	0	0	0
2	B	5	0	0	0	0
2	C	5	0	0	0	0
2	D	5	0	0	0	0
3	A	41	0	32	4	0
3	B	41	0	32	2	0
3	C	41	0	32	3	0
3	D	41	0	32	3	0
4	A	253	0	0	0	0
4	B	295	0	0	0	0
4	C	282	0	0	0	0
4	D	290	0	0	0	0
All	All	13720	0	12634	39	0

The all-atom clashscore is defined as the number of clashes found per 1000 atoms (including hydrogen atoms). The all-atom clashscore for this structure is 2.

All (39) close contacts within the same asymmetric unit are listed below, sorted by their clash magnitude.

Atom-1	Atom-2	Interatomic distance (Å)	Clash overlap (Å)
1:B:635:HIS:HE2	1:B:696:ILE:HD11	1.52	0.73

Continued on next page...

Continued from previous page...

Atom-1	Atom-2	Interatomic distance (Å)	Clash overlap (Å)
1:B:635:HIS:ND1	1:B:635:HIS:C	2.43	0.71
3:A:3002:HR1:H133	3:A:3002:HR1:H71	1.74	0.69
1:C:655:MET:SD	1:C:657[A]:MET:HG3	2.35	0.67
3:B:3001:HR1:H133	3:B:3001:HR1:H72	1.77	0.67
1:C:681:LEU:HD22	1:D:731:VAL:HG22	1.80	0.63
1:B:635:HIS:NE2	1:B:696:ILE:HD11	2.16	0.59
3:B:3001:HR1:H142	3:B:3001:HR1:H82	1.88	0.56
3:A:3002:HR1:H72	3:A:3002:HR1:H142	1.92	0.51
1:A:657[A]:MET:HE1	1:A:702:ARG:HH22	1.76	0.50
1:C:793:ILE:HD13	1:C:851:LEU:HG	1.95	0.49
1:D:595:ARG:HE	1:D:642:ASN:HD21	1.62	0.48
3:D:3003:HR1:H25	3:D:3003:HR1:C18	2.43	0.48
3:C:3004:HR1:H71	3:C:3004:HR1:H133	1.95	0.48
1:D:702:ARG:O	1:D:799:SER:HA	2.15	0.46
1:D:642:ASN:HD22	1:D:642:ASN:N	2.14	0.46
3:C:3004:HR1:H25	3:C:3004:HR1:C18	2.46	0.46
1:D:595:ARG:HE	1:D:642:ASN:ND2	2.14	0.45
1:C:774:SER:HA	1:C:799:SER:O	2.17	0.44
1:A:449:LEU:HD11	1:A:475:HIS:CD2	2.52	0.44
1:B:702:ARG:O	1:B:799:SER:HA	2.17	0.44
1:B:793:ILE:HD13	1:B:851:LEU:HG	2.00	0.44
1:C:635:HIS:HB3	1:C:646:ARG:HB3	2.00	0.43
1:A:619:LYS:HZ1	1:A:630[A]:ARG:CD	2.32	0.43
1:A:793:ILE:HD13	1:A:851:LEU:HG	2.01	0.43
3:D:3003:HR1:H133	3:D:3003:HR1:H71	2.01	0.42
1:C:702:ARG:O	1:C:799:SER:HA	2.20	0.42
1:A:702:ARG:O	1:A:799:SER:HA	2.20	0.42
1:B:657[A]:MET:HE1	1:B:690:ASP:CG	2.40	0.42
3:D:3003:HR1:H142	3:D:3003:HR1:H71	2.02	0.41
3:A:3002:HR1:H25	3:A:3002:HR1:C27	2.51	0.41
1:D:793:ILE:HD13	1:D:851:LEU:HG	2.03	0.41
1:B:441:GLU:N	1:B:442:PRO:CD	2.84	0.41
1:B:635:HIS:ND1	1:B:635:HIS:O	2.54	0.40
3:A:3002:HR1:H21	1:B:853:LEU:HD11	2.03	0.40
3:C:3004:HR1:H71	3:C:3004:HR1:H142	2.02	0.40
1:B:669:SER:O	1:B:672:HIS:HB2	2.21	0.40
1:B:796:THR:HG21	1:C:638:ILE:O	2.22	0.40
1:D:765:GLY:CA	1:D:814:GLN:HG2	2.51	0.40

There are no symmetry-related clashes.

5.3 Torsion angles [i](#)

5.3.1 Protein backbone [i](#)

In the following table, the Percentiles column shows the percent Ramachandran outliers of the chain as a percentile score with respect to all X-ray entries followed by that with respect to entries of similar resolution.

The Analysed column shows the number of residues for which the backbone conformation was analysed, and the total number of residues.

Mol	Chain	Analysed	Favoured	Allowed	Outliers	Percentiles	
1	A	419/441 (95%)	405 (97%)	14 (3%)	0	100	100
1	B	419/441 (95%)	404 (96%)	14 (3%)	1 (0%)	52	48
1	C	411/441 (93%)	395 (96%)	15 (4%)	1 (0%)	52	48
1	D	410/441 (93%)	396 (97%)	13 (3%)	1 (0%)	52	48
All	All	1659/1764 (94%)	1600 (96%)	56 (3%)	3 (0%)	52	48

All (3) Ramachandran outliers are listed below:

Mol	Chain	Res	Type
1	C	474	LYS
1	B	514	TYR
1	D	514	TYR

5.3.2 Protein sidechains [i](#)

In the following table, the Percentiles column shows the percent sidechain outliers of the chain as a percentile score with respect to all X-ray entries followed by that with respect to entries of similar resolution.

The Analysed column shows the number of residues for which the sidechain conformation was analysed, and the total number of residues.

Mol	Chain	Analysed	Rotameric	Outliers	Percentiles	
1	A	335/355 (94%)	318 (95%)	17 (5%)	29	23
1	B	335/355 (94%)	328 (98%)	7 (2%)	61	63
1	C	330/355 (93%)	319 (97%)	11 (3%)	45	43
1	D	330/355 (93%)	323 (98%)	7 (2%)	61	63
All	All	1330/1420 (94%)	1288 (97%)	42 (3%)	46	44

All (42) residues with a non-rotameric sidechain are listed below:

Mol	Chain	Res	Type
1	A	443	ARG
1	A	447	GLU
1	A	449	LEU
1	A	469	GLN
1	A	474	LYS
1	A	484	LEU
1	A	498	LEU
1	A	512	LEU
1	A	523	MET
1	A	634	LEU
1	A	637	SER
1	A	677	GLU
1	A	688	CYS
1	A	752	HIS
1	A	771[A]	ASN
1	A	788	ASN
1	A	814	GLN
1	B	486	GLU
1	B	488	HIS
1	B	505	GLU
1	B	523	MET
1	B	630[A]	ARG
1	B	635	HIS
1	B	728	MET
1	C	452	LEU
1	C	469	GLN
1	C	475	HIS
1	C	490	ARG
1	C	500	SER
1	C	626	SER
1	C	657[A]	MET
1	C	666	LYS
1	C	681	LEU
1	C	771[A]	ASN
1	C	828	LYS
1	D	446	GLU
1	D	450	GLN
1	D	466	GLU
1	D	484	LEU
1	D	486	GLU
1	D	487	THR
1	D	510	GLN

Some sidechains can be flipped to improve hydrogen bonding and reduce clashes. All (15) such

sidechains are listed below:

Mol	Chain	Res	Type
1	A	510	GLN
1	A	518	ASN
1	A	567	ASN
1	A	771[A]	ASN
1	A	788	ASN
1	B	472	ASN
1	B	510	GLN
1	B	529	ASN
1	B	635	HIS
1	C	672	HIS
1	C	679	GLN
1	C	771[A]	ASN
1	D	518	ASN
1	D	642	ASN
1	D	861	HIS

5.3.3 RNA ⓘ

There are no RNA molecules in this entry.

5.4 Non-standard residues in protein, DNA, RNA chains ⓘ

There are no non-standard protein/DNA/RNA residues in this entry.

5.5 Carbohydrates ⓘ

There are no carbohydrates in this entry.

5.6 Ligand geometry ⓘ

8 ligands are modelled in this entry.

In the following table, the Counts columns list the number of bonds (or angles) for which Mogul statistics could be retrieved, the number of bonds (or angles) that are observed in the model and the number of bonds (or angles) that are defined in the chemical component dictionary. The Link column lists molecule types, if any, to which the group is linked. The Z score for a bond length (or angle) is the number of standard deviations the observed value is removed from the expected value. A bond length (or angle) with $|Z| > 2$ is considered an outlier worth inspection. RMSZ is the root-mean-square of all Z scores of the bond lengths (or angles).

Mol	Type	Chain	Res	Link	Bond lengths			Bond angles		
					Counts	RMSZ	# Z > 2	Counts	RMSZ	# Z > 2
2	SO4	A	2001	-	4,4,4	0.30	0	6,6,6	0.11	0
3	HR1	A	3002	-	38,45,45	1.39	4 (10%)	45,65,65	1.66	4 (8%)
2	SO4	B	2002	-	4,4,4	0.27	0	6,6,6	0.06	0
3	HR1	B	3001	-	38,45,45	1.29	4 (10%)	45,65,65	2.01	10 (22%)
2	SO4	C	2003	-	4,4,4	0.30	0	6,6,6	0.10	0
3	HR1	C	3004	-	38,45,45	1.39	4 (10%)	45,65,65	1.69	5 (11%)
2	SO4	D	2004	-	4,4,4	0.29	0	6,6,6	0.18	0
3	HR1	D	3003	-	38,45,45	1.36	4 (10%)	45,65,65	1.75	4 (8%)

In the following table, the Chirals column lists the number of chiral outliers, the number of chiral centers analysed, the number of these observed in the model and the number defined in the chemical component dictionary. Similar counts are reported in the Torsion and Rings columns. '-' means no outliers of that kind were identified.

Mol	Type	Chain	Res	Link	Chirals	Torsions	Rings
2	SO4	A	2001	-	-	0/0/0/0	0/0/0/0
3	HR1	A	3002	-	-	0/23/25/25	0/5/5/5
2	SO4	B	2002	-	-	0/0/0/0	0/0/0/0
3	HR1	B	3001	-	-	0/23/25/25	0/5/5/5
2	SO4	C	2003	-	-	0/0/0/0	0/0/0/0
3	HR1	C	3004	-	-	0/23/25/25	0/5/5/5
2	SO4	D	2004	-	-	0/0/0/0	0/0/0/0
3	HR1	D	3003	-	-	0/23/25/25	0/5/5/5

All (16) bond length outliers are listed below:

Mol	Chain	Res	Type	Atoms	Z	Observed(Å)	Ideal(Å)
3	D	3003	HR1	C20-N2	-3.65	1.42	1.46
3	C	3004	HR1	C20-N2	-3.64	1.42	1.46
3	A	3002	HR1	C20-N2	-3.55	1.42	1.46
3	B	3001	HR1	C20-N2	-3.46	1.42	1.46
3	B	3001	HR1	C5-C1	2.27	1.46	1.42
3	A	3002	HR1	C5-C1	2.69	1.46	1.42
3	D	3003	HR1	C5-C1	2.73	1.46	1.42
3	C	3004	HR1	C5-C1	2.84	1.46	1.42
3	A	3002	HR1	C1-C2	2.98	1.46	1.42
3	B	3001	HR1	C1-C2	3.03	1.46	1.42
3	C	3004	HR1	C1-C2	3.09	1.46	1.42
3	D	3003	HR1	C1-C2	3.12	1.46	1.42
3	B	3001	HR1	C5-C12	4.40	1.48	1.40
3	D	3003	HR1	C5-C12	4.74	1.49	1.40

Continued on next page...

Continued from previous page...

Mol	Chain	Res	Type	Atoms	Z	Observed(Å)	Ideal(Å)
3	C	3004	HR1	C5-C12	4.90	1.49	1.40
3	A	3002	HR1	C5-C12	5.19	1.50	1.40

All (23) bond angle outliers are listed below:

Mol	Chain	Res	Type	Atoms	Z	Observed(°)	Ideal(°)
3	B	3001	HR1	C3-C2-C1	-8.57	113.79	119.93
3	D	3003	HR1	C3-C2-C1	-8.52	113.83	119.93
3	A	3002	HR1	C3-C2-C1	-8.29	114.00	119.93
3	C	3004	HR1	C3-C2-C1	-8.23	114.04	119.93
3	B	3001	HR1	C7-C12-C5	-4.34	123.08	130.41
3	B	3001	HR1	C7-C8-C9	-4.04	106.97	115.31
3	C	3004	HR1	C1-C31-C16	-3.15	116.19	118.86
3	D	3003	HR1	C1-C31-C16	-3.13	116.20	118.86
3	B	3001	HR1	C1-C31-C16	-3.12	116.21	118.86
3	A	3002	HR1	C1-C31-C16	-3.04	116.29	118.86
3	B	3001	HR1	C10-C11-C35	-2.46	108.25	112.94
3	D	3003	HR1	C7-C12-C5	-2.45	126.27	130.41
3	B	3001	HR1	C21-C27-C5	-2.23	117.28	120.76
3	B	3001	HR1	C11-C10-C9	-2.15	111.19	114.18
3	A	3002	HR1	C7-C8-C9	-2.10	110.97	115.31
3	C	3004	HR1	C7-C8-C9	-2.04	111.09	115.31
3	B	3001	HR1	C24-C30-C15	-2.03	119.95	122.87
3	C	3004	HR1	C24-C30-C15	-2.02	119.97	122.87
3	B	3001	HR1	C25-C31-C16	2.70	121.47	117.73
3	B	3001	HR1	C3-N2-C16	2.84	123.61	120.93
3	A	3002	HR1	C3-N2-C16	3.04	123.80	120.93
3	D	3003	HR1	C3-N2-C16	3.10	123.86	120.93
3	C	3004	HR1	C3-N2-C16	3.15	123.90	120.93

There are no chirality outliers.

There are no torsion outliers.

There are no ring outliers.

4 monomers are involved in 12 short contacts:

Mol	Chain	Res	Type	Clashes	Symm-Clashes
3	A	3002	HR1	4	0
3	B	3001	HR1	2	0
3	C	3004	HR1	3	0
3	D	3003	HR1	3	0

5.7 Other polymers

There are no such residues in this entry.

5.8 Polymer linkage issues

There are no chain breaks in this entry.

6 Fit of model and data ⓘ

6.1 Protein, DNA and RNA chains ⓘ

In the following table, the column labelled ‘#RSRZ> 2’ contains the number (and percentage) of RSRZ outliers, followed by percent RSRZ outliers for the chain as percentile scores relative to all X-ray entries and entries of similar resolution. The OWAB column contains the minimum, median, 95th percentile and maximum values of the occupancy-weighted average B-factor per residue. The column labelled ‘Q< 0.9’ lists the number of (and percentage) of residues with an average occupancy less than 0.9.

Mol	Chain	Analysed	<RSRZ>	#RSRZ>2	OWAB(Å ²)	Q<0.9
1	A	421/441 (95%)	0.27	24 (5%) 27 29	16, 27, 50, 55	6 (1%)
1	B	420/441 (95%)	0.61	45 (10%) 8 8	16, 28, 55, 57	6 (1%)
1	C	414/441 (93%)	0.49	37 (8%) 12 13	14, 26, 55, 58	6 (1%)
1	D	413/441 (93%)	0.67	39 (9%) 11 11	16, 26, 55, 58	4 (0%)
All	All	1668/1764 (94%)	0.51	145 (8%) 13 13	14, 27, 55, 58	22 (1%)

All (145) RSRZ outliers are listed below:

Mol	Chain	Res	Type	RSRZ
1	D	481	LEU	24.0
1	D	473	ALA	17.2
1	C	479	TYR	14.8
1	B	477	PRO	14.1
1	D	484	LEU	14.1
1	B	479	TYR	14.0
1	B	455	ALA	13.9
1	C	473	ALA	13.7
1	D	480	LYS	13.2
1	B	481	LEU	13.1
1	D	479	TYR	12.9
1	D	483	THR	12.7
1	D	476	ILE	12.5
1	B	449	LEU	12.4
1	D	472	ASN	11.7
1	B	478	ALA	10.8
1	D	446	GLU	10.3
1	D	475	HIS	10.3
1	B	480	LYS	10.2
1	B	458	GLY	9.9
1	B	461	PHE	9.4

Continued on next page...

Continued from previous page...

Mol	Chain	Res	Type	RSRZ
1	D	468	ILE	9.4
1	D	444	PRO	9.3
1	D	458	GLY	9.3
1	B	444	PRO	9.3
1	A	453	GLY	9.1
1	A	452	LEU	9.0
1	A	455	ALA	9.0
1	B	453	GLY	8.5
1	C	472	ASN	8.5
1	D	448	CYS	8.4
1	D	462	LEU	8.4
1	A	449	LEU	8.0
1	C	461	PHE	7.8
1	D	470	LEU	7.8
1	B	452	LEU	7.7
1	D	474	LYS	7.7
1	C	481	LEU	7.6
1	C	484	LEU	7.6
1	B	450	GLN	7.5
1	C	474	LYS	7.2
1	B	475	HIS	7.1
1	D	478	ALA	7.1
1	D	443	ARG	6.8
1	D	477	PRO	6.8
1	A	441	GLU	6.8
1	B	459	ALA	6.6
1	D	469	GLN	6.6
1	C	476	ILE	6.4
1	B	445	ASN	6.4
1	C	469	GLN	6.3
1	C	480	LYS	6.2
1	A	461	PHE	6.2
1	C	448	CYS	6.1
1	B	476	ILE	6.1
1	D	461	PHE	6.0
1	A	454	ASN	5.9
1	C	475	HIS	5.8
1	A	450	GLN	5.8
1	C	477	PRO	5.8
1	B	483	THR	5.7
1	C	471	VAL	5.5
1	C	446	GLU	5.4

Continued on next page...

Continued from previous page...

Mol	Chain	Res	Type	RSRZ
1	D	445	ASN	5.4
1	B	454	ASN	5.2
1	B	457	LYS	5.2
1	B	472	ASN	5.2
1	C	453	GLY	5.1
1	D	450	GLN	5.0
1	C	486	GLU	5.0
1	B	484	LEU	5.0
1	C	452	LEU	4.9
1	B	485	ILE	4.9
1	B	473	ALA	4.9
1	C	465	ALA	4.9
1	C	483	THR	4.9
1	C	468	ILE	4.8
1	C	454	ASN	4.8
1	D	486	GLU	4.8
1	B	448	CYS	4.7
1	D	463	SER	4.6
1	C	450	GLN	4.5
1	C	478	ALA	4.4
1	B	672	HIS	4.4
1	D	447	GLU	4.4
1	C	829	ASP	4.3
1	B	482	GLU	4.3
1	B	471	VAL	4.3
1	A	861	HIS	4.3
1	D	459	ALA	4.3
1	B	474	LYS	4.2
1	B	635	HIS	4.2
1	A	456	GLU	4.2
1	B	447	GLU	4.1
1	C	470	LEU	4.0
1	C	458	GLY	3.9
1	D	471	VAL	3.9
1	D	442	PRO	3.9
1	B	441	GLU	3.8
1	A	458	GLY	3.7
1	C	444	PRO	3.7
1	B	451	ILE	3.6
1	B	446	GLU	3.6
1	C	447	GLU	3.6
1	C	487	THR	3.6

Continued on next page...

Continued from previous page...

Mol	Chain	Res	Type	RSRZ
1	B	462	LEU	3.5
1	D	627	ARG	3.4
1	C	482	GLU	3.4
1	C	633	LYS	3.3
1	A	444	PRO	3.3
1	A	445	ASN	3.2
1	B	469	GLN	3.2
1	A	672	HIS	3.1
1	A	442	PRO	3.0
1	C	445	ASN	3.0
1	B	787	THR	2.9
1	D	488	HIS	2.8
1	A	462	LEU	2.8
1	B	456	GLU	2.8
1	C	449	LEU	2.8
1	A	457	LYS	2.8
1	C	451	ILE	2.8
1	D	449	LEU	2.7
1	B	786	PRO	2.7
1	D	465	ALA	2.7
1	A	446	GLU	2.6
1	D	487	THR	2.6
1	B	468	ILE	2.5
1	B	633	LYS	2.5
1	A	665	GLU	2.4
1	A	828	LYS	2.3
1	A	658	ASN	2.3
1	D	861	HIS	2.3
1	A	786	PRO	2.3
1	D	464	ASP	2.3
1	B	828	LYS	2.3
1	D	460	LYS	2.3
1	D	828	LYS	2.3
1	B	460	LYS	2.2
1	C	627	ARG	2.1
1	A	475	HIS	2.1
1	B	486	GLU	2.0
1	A	484	LEU	2.0
1	B	718	ARG	2.0
1	C	516	ASP	2.0

6.2 Non-standard residues in protein, DNA, RNA chains [i](#)

There are no non-standard protein/DNA/RNA residues in this entry.

6.3 Carbohydrates [i](#)

There are no carbohydrates in this entry.

6.4 Ligands [i](#)

In the following table, the Atoms column lists the number of modelled atoms in the group and the number defined in the chemical component dictionary. LLDF column lists the quality of electron density of the group with respect to its neighbouring residues in protein, DNA or RNA chains. The B-factors column lists the minimum, median, 95th percentile and maximum values of B factors of atoms in the group. The column labelled 'Q< 0.9' lists the number of atoms with occupancy less than 0.9.

Mol	Type	Chain	Res	Atoms	RSCC	RSR	LLDF	B-factors(Å ²)	Q<0.9
3	HR1	A	3002	41/41	0.87	0.17	1.64	20,34,37,37	0
2	SO4	B	2002	5/5	0.91	0.17	1.10	52,52,52,52	0
2	SO4	A	2001	5/5	0.82	0.20	0.98	58,58,58,58	0
3	HR1	B	3001	41/41	0.85	0.17	0.87	21,36,39,39	0
3	HR1	C	3004	41/41	0.88	0.15	0.85	18,33,35,35	0
3	HR1	D	3003	41/41	0.90	0.14	0.82	18,28,31,32	0
2	SO4	D	2004	5/5	0.93	0.14	0.23	40,41,41,41	0
2	SO4	C	2003	5/5	0.95	0.12	-0.35	45,45,45,45	0

6.5 Other polymers [i](#)

There are no such residues in this entry.