



# Full wwPDB X-ray Structure Validation Report ⓘ

Feb 1, 2016 – 11:50 AM GMT

PDB ID : 3Q7A  
Title : Cryptococcus neoformans protein farnesyltransferase in complex with FPP and L-778,123  
Authors : Hast, M.A.; Beese, L.S.  
Deposited on : 2011-01-04  
Resolution : 2.00 Å(reported)

This is a Full wwPDB X-ray Structure Validation Report for a publicly released PDB entry.  
We welcome your comments at [validation@mail.wwpdb.org](mailto:validation@mail.wwpdb.org)  
A user guide is available at  
<http://wwpdb.org/validation/2016/XrayValidationReportHelp>  
with specific help available everywhere you see the ⓘ symbol.

---

The following versions of software and data (see [references ⓘ](#)) were used in the production of this report:

MolProbity : 4.02b-467  
Mogul : 1.7 (RC4), CSD as536be (2015)  
Xtriage (Phenix) : 1.9-1692  
EDS : rb-20026688  
Percentile statistics : 20151230.v01 (using entries in the PDB archive December 30th 2015)  
Refmac : 5.8.0135  
CCP4 : 6.5.0  
Ideal geometry (proteins) : Engh & Huber (2001)  
Ideal geometry (DNA, RNA) : Parkinson et al. (1996)  
Validation Pipeline (wwPDB-VP) : trunk26865

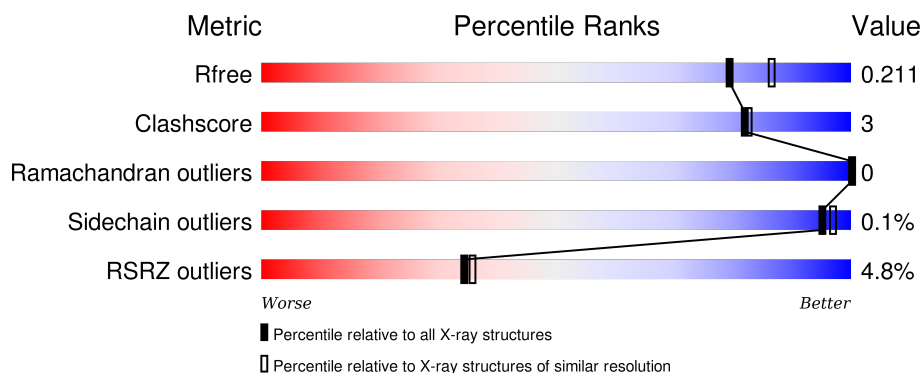
# 1 Overall quality at a glance

The following experimental techniques were used to determine the structure:

## *X-RAY DIFFRACTION*

The reported resolution of this entry is 2.00 Å.

Percentile scores (ranging between 0-100) for global validation metrics of the entry are shown in the following graphic. The table shows the number of entries on which the scores are based.



Metric	Whole archive (#Entries)	Similar resolution (#Entries, resolution range(Å))
$R_{free}$	91344	6249 (2.00-2.00)
Clashscore	102246	7340 (2.00-2.00)
Ramachandran outliers	100387	7248 (2.00-2.00)
Sidechain outliers	100360	7247 (2.00-2.00)
RSRZ outliers	91569	6262 (2.00-2.00)

The table below summarises the geometric issues observed across the polymeric chains and their fit to the electron density. The red, orange, yellow and green segments on the lower bar indicate the fraction of residues that contain outliers for  $\geq 3$ , 2, 1 and 0 types of geometric quality criteria. A grey segment represents the fraction of residues that are not modelled. The numeric value for each fraction is indicated below the corresponding segment, with a dot representing fractions  $\leq 5\%$ . The upper red bar (where present) indicates the fraction of residues that have poor fit to the electron density. The numeric value is given above the bar.

Mol	Chain	Length	Quality of chain
1	A	349	<div> <div>5%</div> <div>88%</div> <div>10%</div> </div>
2	B	520	<div> <div>4%</div> <div>85%</div> <div>8%</div> <div>7%</div> </div>

The following table lists non-polymeric compounds, carbohydrate monomers and non-standard residues in protein, DNA, RNA chains that are outliers for geometric or electron-density-fit criteria:

Mol	Type	Chain	Res	Chirality	Geometry	Clashes	Electron density
5	3FX	B	522	-	-	-	X
5	3FX	B	524	-	-	-	X

## 2 Entry composition [i](#)

There are 9 unique types of molecules in this entry. The entry contains 7245 atoms, of which 0 are hydrogens and 0 are deuteriums.

In the tables below, the ZeroOcc column contains the number of atoms modelled with zero occupancy, the AltConf column contains the number of residues with at least one atom in alternate conformation and the Trace column contains the number of residues modelled with at most 2 atoms.

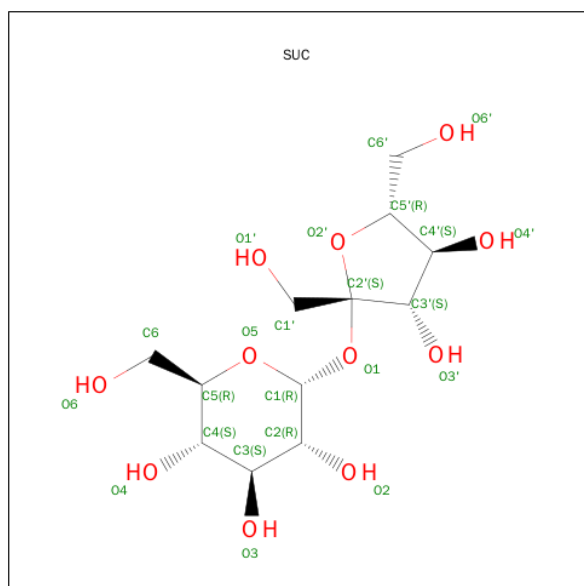
- Molecule 1 is a protein called Farnesyltransferase alpha subunit.

Mol	Chain	Residues	Atoms					ZeroOcc	AltConf	Trace
1	A	315	Total	C	N	O	S	0	0	0
			2621	1691	446	473	11			

- Molecule 2 is a protein called Farnesyltransferase beta subunit.

Mol	Chain	Residues	Atoms					ZeroOcc	AltConf	Trace
2	B	485	Total	C	N	O	S	0	1	0
			3730	2366	649	700	15			

- Molecule 3 is SUGAR (SUCROSE) (three-letter code: SUC) (formula: C<sub>12</sub>H<sub>22</sub>O<sub>11</sub>).



Mol	Chain	Residues	Atoms			ZeroOcc	AltConf
3	A	1	Total	C	O	0	0
			23	12	11		
3	B	1	Total	C	O	0	0
			23	12	11		

*Continued on next page...*

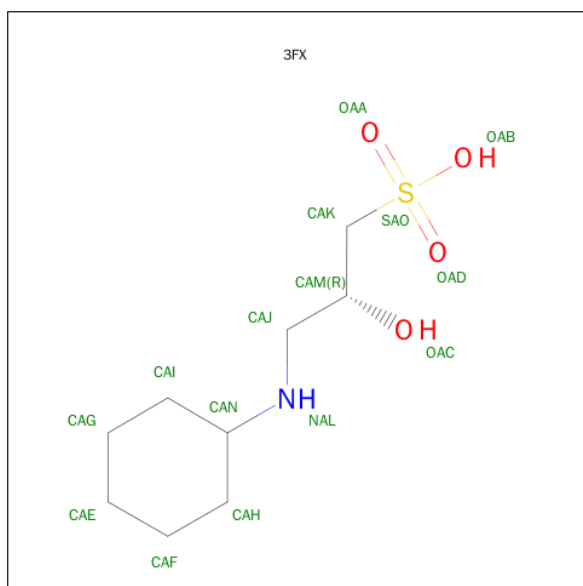
*Continued from previous page...*

Mol	Chain	Residues	Atoms			ZeroOcc	AltConf
3	B	1	Total	C	O	0	0
			23	12	11		

- Molecule 4 is ZINC ION (three-letter code: ZN) (formula: Zn).

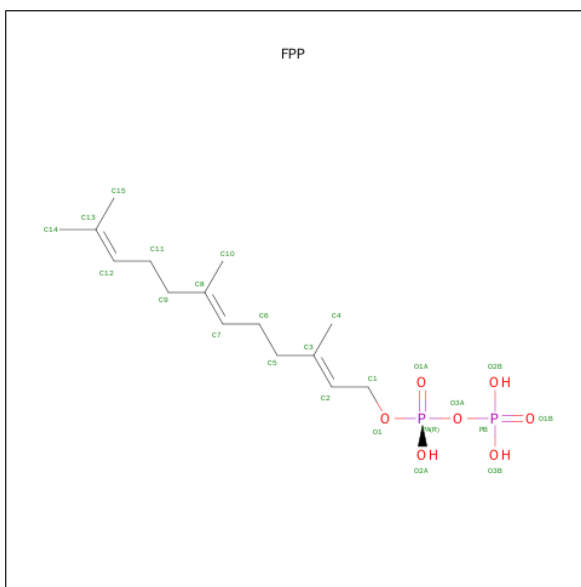
Mol	Chain	Residues	Atoms		ZeroOcc	AltConf
4	B	1	Total	Zn	0	0
			1	1		

- Molecule 5 is (2R)-3-(CYCLOHEXYLAMINO)-2-HYDROXYPROPANE-1-SULFONIC ACID (three-letter code: 3FX) (formula: C<sub>9</sub>H<sub>19</sub>NO<sub>4</sub>S).



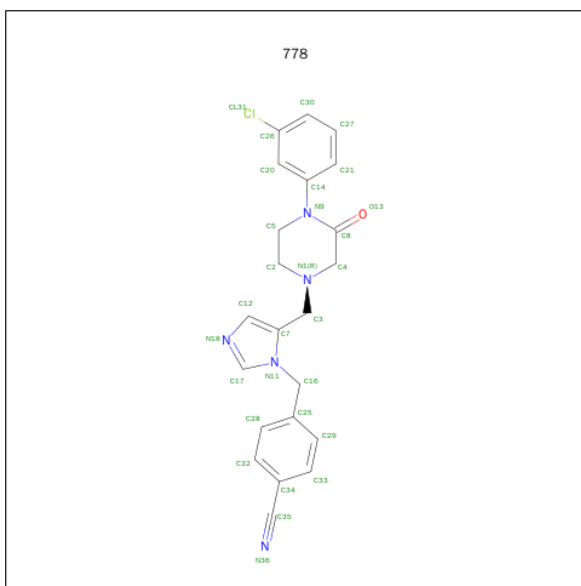
Mol	Chain	Residues	Atoms					ZeroOcc	AltConf
5	B	1	Total	C	N	O	S	0	0
			15	9	1	4	1		
5	B	1	Total	C	N	O	S	0	0
			15	9	1	4	1		
5	B	1	Total	C	N	O	S	0	0
			15	9	1	4	1		

- Molecule 6 is FARNESYL DIPHOSPHATE (three-letter code: FPP) (formula: C<sub>15</sub>H<sub>28</sub>O<sub>7</sub>P<sub>2</sub>).



Mol	Chain	Residues	Atoms				ZeroOcc	AltConf
6	B	1	Total	C	O	P	0	0
			24	15	7	2		

- Molecule 7 is 4-[(5-{[4-(3-CHLOROPHENYL)-3-OXOPIPERAZIN-1-YL]METHYL}-1H-IMIDAZOL-1-YL)METHYL]BENZONITRILE (three-letter code: 778) (formula:  $C_{22}H_{20}ClN_5O$ ).



Mol	Chain	Residues	Atoms					ZeroOcc	AltConf
7	B	1	Total	C	Cl	N	O	0	0
			29	22	1	5	1		

- Molecule 8 is SULFATE ION (three-letter code: SO4) (formula:  $O_4S$ ).



Mol	Chain	Residues	Atoms			ZeroOcc	AltConf
8	B	1	Total	O	S	0	0
			5	4	1		

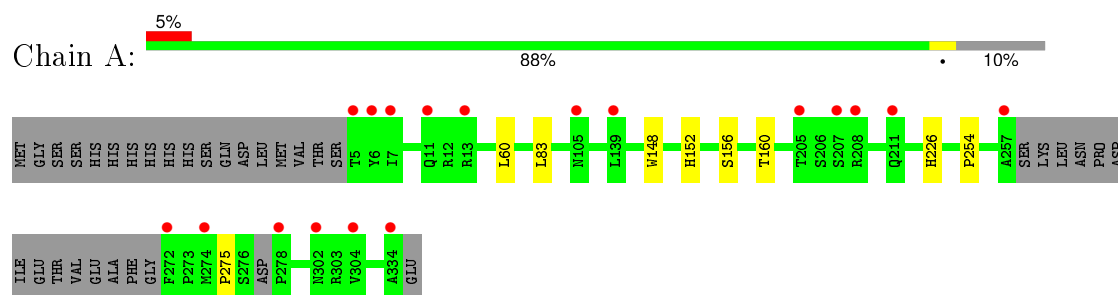
- Molecule 9 is water.

Mol	Chain	Residues	Atoms		ZeroOcc	AltConf
9	A	253	Total	O	0	0
			253	253		
9	B	468	Total	O	0	0
			468	468		

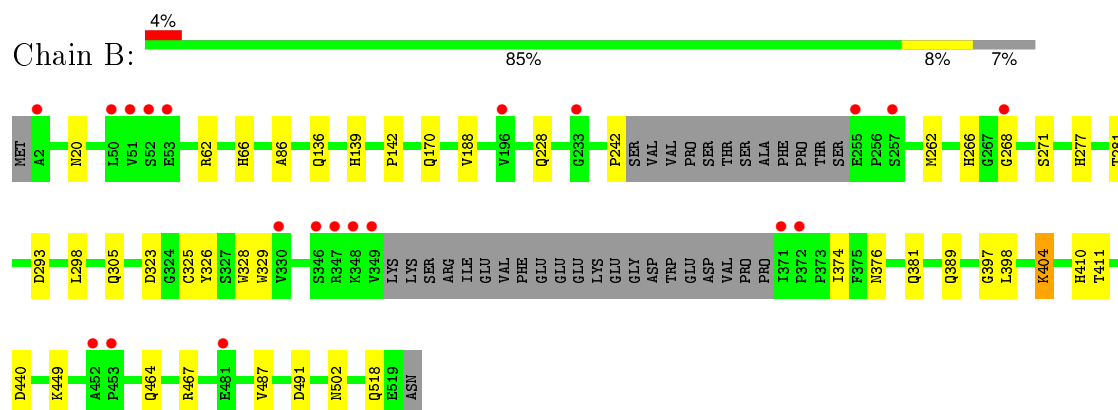
### 3 Residue-property plots [i](#)

These plots are drawn for all protein, RNA and DNA chains in the entry. The first graphic for a chain summarises the proportions of errors displayed in the second graphic. The second graphic shows the sequence view annotated by issues in geometry and electron density. Residues are color-coded according to the number of geometric quality criteria for which they contain at least one outlier: green = 0, yellow = 1, orange = 2 and red = 3 or more. A red dot above a residue indicates a poor fit to the electron density ( $RSRZ > 2$ ). Stretches of 2 or more consecutive residues without any outlier are shown as a green connector. Residues present in the sample, but not in the model, are shown in grey.

#### • Molecule 1: Farnesyltransferase alpha subunit



#### • Molecule 2: Farnesyltransferase beta subunit





## 4 Data and refinement statistics

Property	Value	Source
Space group	P 43 21 2	Depositor
Cell constants a, b, c, $\alpha$ , $\beta$ , $\gamma$	142.71Å 142.71Å 130.44Å 90.00° 90.00° 90.00°	Depositor
Resolution (Å)	48.14 – 2.00 48.14 – 2.00	Depositor EDS
% Data completeness (in resolution range)	98.7 (48.14-2.00) 98.7 (48.14-2.00)	Depositor EDS
$R_{merge}$	(Not available)	Depositor
$R_{sym}$	(Not available)	Depositor
$\langle I/\sigma(I) \rangle$ <sup>1</sup>	2.84 (at 2.00Å)	Xtriage
Refinement program	REFMAC	Depositor
R, $R_{free}$	0.185 , 0.203 0.193 , 0.211	Depositor DCC
$R_{free}$ test set	4507 reflections (5.28%)	DCC
Wilson B-factor (Å <sup>2</sup> )	24.7	Xtriage
Anisotropy	0.098	Xtriage
Bulk solvent $k_{sol}$ (e/Å <sup>3</sup> ), $B_{sol}$ (Å <sup>2</sup> )	0.37 , 44.7	EDS
Estimated twinning fraction	No twinning to report.	Xtriage
L-test for twinning <sup>2</sup>	$\langle  L  \rangle = 0.48$ , $\langle L^2 \rangle = 0.31$	Xtriage
Outliers	0 of 89937 reflections	Xtriage
$F_o, F_c$ correlation	0.95	EDS
Total number of atoms	7245	wwPDB-VP
Average B, all atoms (Å <sup>2</sup> )	27.0	wwPDB-VP

Xtriage's analysis on translational NCS is as follows: *The largest off-origin peak in the Patterson function is 3.10% of the height of the origin peak. No significant pseudotranslation is detected.*

<sup>1</sup>Intensities estimated from amplitudes.

<sup>2</sup>Theoretical values of  $\langle |L| \rangle$ ,  $\langle L^2 \rangle$  for acentric reflections are 0.5, 0.375 respectively for untwinned datasets, and 0.333, 0.2 for perfectly twinned datasets.

## 5 Model quality [i](#)

### 5.1 Standard geometry [i](#)

Bond lengths and bond angles in the following residue types are not validated in this section: ZN, SUC, 3FX, 778, SO4, FPP

The Z score for a bond length (or angle) is the number of standard deviations the observed value is removed from the expected value. A bond length (or angle) with  $|Z| > 5$  is considered an outlier worth inspection. RMSZ is the root-mean-square of all Z scores of the bond lengths (or angles).

Mol	Chain	Bond lengths		Bond angles	
		RMSZ	$\# Z  > 5$	RMSZ	$\# Z  > 5$
1	A	0.33	0/2703	0.44	0/3680
2	B	0.35	0/3827	0.48	1/5198 (0.0%)
All	All	0.34	0/6530	0.46	1/8878 (0.0%)

There are no bond length outliers.

All (1) bond angle outliers are listed below:

Mol	Chain	Res	Type	Atoms	Z	Observed(°)	Ideal(°)
2	B	242	PRO	CA-N-CD	-8.53	99.56	111.50

There are no chirality outliers.

There are no planarity outliers.

### 5.2 Too-close contacts [i](#)

In the following table, the Non-H and H(model) columns list the number of non-hydrogen atoms and hydrogen atoms in the chain respectively. The H(added) column lists the number of hydrogen atoms added and optimized by MolProbity. The Clashes column lists the number of clashes within the asymmetric unit, whereas Symm-Clashes lists symmetry related clashes.

Mol	Chain	Non-H	H(model)	H(added)	Clashes	Symm-Clashes
1	A	2621	0	2544	6	0
2	B	3730	0	3657	35	0
3	A	23	0	22	0	0
3	B	46	0	44	0	0
4	B	1	0	0	0	0
5	B	45	0	56	2	0
6	B	24	0	25	3	0
7	B	29	0	20	1	0

*Continued on next page...*

*Continued from previous page...*

Mol	Chain	Non-H	H(model)	H(added)	Clashes	Symm-Clashes
8	B	5	0	0	0	0
9	A	253	0	0	0	0
9	B	468	0	0	1	0
All	All	7245	0	6368	41	0

The all-atom clashscore is defined as the number of clashes found per 1000 atoms (including hydrogen atoms). The all-atom clashscore for this structure is 3.

All (41) close contacts within the same asymmetric unit are listed below, sorted by their clash magnitude.

Atom-1	Atom-2	Interatomic distance (Å)	Clash overlap (Å)
2:B:464:GLN:HE22	2:B:467:ARG:HH11	1.21	0.84
2:B:440:ASP:H	2:B:518:GLN:HE22	1.24	0.82
2:B:305:GLN:HE22	2:B:376:ASN:H	1.30	0.79
2:B:62:ARG:H	2:B:389:GLN:HE22	1.29	0.78
2:B:228:GLN:HE22	2:B:293:ASP:H	1.28	0.78
2:B:66:HIS:HD1	2:B:397:GLY:H	1.36	0.73
2:B:170:GLN:HE22	2:B:449:LYS:H	1.37	0.72
2:B:266:HIS:HD2	2:B:268:GLY:H	1.40	0.68
2:B:381:GLN:HE22	2:B:487:VAL:H	1.48	0.61
2:B:266:HIS:HE1	6:B:3011:FPP:O2B	1.86	0.59
1:A:148:TRP:O	1:A:152:HIS:HD2	1.87	0.57
2:B:440:ASP:H	2:B:518:GLN:NE2	2.00	0.57
1:A:226:HIS:H	2:B:20:ASN:HD21	1.53	0.56
5:B:522:3FX:HAJA	9:B:1900:HOH:O	2.08	0.54
2:B:381:GLN:NE2	2:B:487:VAL:H	2.06	0.53
2:B:139:HIS:CE1	2:B:188:VAL:HB	2.45	0.52
2:B:305:GLN:NE2	2:B:376:ASN:H	2.06	0.49
2:B:328:TRP:CZ2	2:B:502:ASN:HB2	2.47	0.49
2:B:298:LEU:HD11	2:B:374:ILE:HG12	1.96	0.48
2:B:268:GLY:HA3	6:B:3011:FPP:C8	2.45	0.47
2:B:323:ASP:HB3	2:B:326:TYR:CD2	2.50	0.46
2:B:464:GLN:HE22	2:B:467:ARG:NH1	2.01	0.45
2:B:139:HIS:HB3	2:B:142:PRO:CG	2.47	0.45
2:B:62:ARG:H	2:B:389:GLN:NE2	2.07	0.44
2:B:305:GLN:HE22	2:B:376:ASN:N	2.06	0.44
2:B:86:ALA:HA	2:B:136:GLN:HE22	1.82	0.44
1:A:226:HIS:H	2:B:20:ASN:ND2	2.14	0.44
1:A:156:SER:O	1:A:160:THR:HG23	2.18	0.43
2:B:271:SER:HB2	2:B:329:TRP:O	2.18	0.43
2:B:325:CYS:HB3	2:B:410:HIS:CD2	2.54	0.43

*Continued on next page...*

Continued from previous page...

Atom-1	Atom-2	Interatomic distance (Å)	Clash overlap (Å)
1:A:254:PRO:HG2	1:A:275:PRO:HG2	2.00	0.42
2:B:262[B]:MET:HA	2:B:262[B]:MET:CE	2.49	0.42
2:B:66:HIS:HD1	2:B:397:GLY:N	2.09	0.42
2:B:170:GLN:NE2	2:B:449:LYS:H	2.12	0.42
2:B:398:LEU:HB2	2:B:411:THR:HA	2.02	0.42
2:B:491:ASP:OD2	5:B:522:3FX:NAL	2.51	0.41
1:A:60:LEU:HA	1:A:83:LEU:HD13	2.01	0.41
6:B:3011:FPP:H102	7:B:3012:778:C29	2.50	0.41
2:B:277:HIS:O	2:B:281:THR:HG23	2.19	0.41
2:B:404:LYS:HA	2:B:404:LYS:HD2	1.96	0.41
2:B:170:GLN:HE22	2:B:449:LYS:N	2.12	0.40

There are no symmetry-related clashes.

## 5.3 Torsion angles [i](#)

### 5.3.1 Protein backbone [i](#)

In the following table, the Percentiles column shows the percent Ramachandran outliers of the chain as a percentile score with respect to all X-ray entries followed by that with respect to entries of similar resolution.

The Analysed column shows the number of residues for which the backbone conformation was analysed, and the total number of residues.

Mol	Chain	Analysed	Favoured	Allowed	Outliers	Percentiles	
1	A	309/349 (88%)	301 (97%)	8 (3%)	0	100	100
2	B	480/520 (92%)	470 (98%)	10 (2%)	0	100	100
All	All	789/869 (91%)	771 (98%)	18 (2%)	0	100	100

There are no Ramachandran outliers to report.

### 5.3.2 Protein sidechains [i](#)

In the following table, the Percentiles column shows the percent sidechain outliers of the chain as a percentile score with respect to all X-ray entries followed by that with respect to entries of similar resolution.

The Analysed column shows the number of residues for which the sidechain conformation was analysed, and the total number of residues.

Mol	Chain	Analysed	Rotameric	Outliers	Percentiles	
1	A	285/316 (90%)	285 (100%)	0	100	100
2	B	404/436 (93%)	403 (100%)	1 (0%)	95	97
All	All	689/752 (92%)	688 (100%)	1 (0%)	95	97

All (1) residues with a non-rotameric sidechain are listed below:

Mol	Chain	Res	Type
2	B	404	LYS

Some sidechains can be flipped to improve hydrogen bonding and reduce clashes. All (21) such sidechains are listed below:

Mol	Chain	Res	Type
1	A	73	HIS
1	A	110	GLN
1	A	152	HIS
1	A	187	ASN
1	A	211	GLN
2	B	20	ASN
2	B	108	GLN
2	B	136	GLN
2	B	170	GLN
2	B	219	ASN
2	B	228	GLN
2	B	266	HIS
2	B	304	GLN
2	B	305	GLN
2	B	319	ASN
2	B	381	GLN
2	B	389	GLN
2	B	414	ASN
2	B	464	GLN
2	B	495	ASN
2	B	518	GLN

### 5.3.3 RNA ⓘ

There are no RNA molecules in this entry.

## 5.4 Non-standard residues in protein, DNA, RNA chains ⓘ

There are no non-standard protein/DNA/RNA residues in this entry.

## 5.5 Carbohydrates ⓘ

There are no carbohydrates in this entry.

## 5.6 Ligand geometry ⓘ

Of 10 ligands modelled in this entry, 1 is monoatomic - leaving 9 for Mogul analysis.

In the following table, the Counts columns list the number of bonds (or angles) for which Mogul statistics could be retrieved, the number of bonds (or angles) that are observed in the model and the number of bonds (or angles) that are defined in the chemical component dictionary. The Link column lists molecule types, if any, to which the group is linked. The Z score for a bond length (or angle) is the number of standard deviations the observed value is removed from the expected value. A bond length (or angle) with  $|Z| > 2$  is considered an outlier worth inspection. RMSZ is the root-mean-square of all Z scores of the bond lengths (or angles).

Mol	Type	Chain	Res	Link	Bond lengths			Bond angles		
					Counts	RMSZ	# $ Z  > 2$	Counts	RMSZ	# $ Z  > 2$
3	SUC	A	3010	-	24,24,24	0.73	0	36,36,36	0.74	1 (2%)
3	SUC	B	1002	-	24,24,24	0.74	0	36,36,36	0.57	0
3	SUC	B	3010	-	24,24,24	0.72	0	36,36,36	0.75	1 (2%)
6	FPP	B	3011	-	21,23,23	2.05	6 (28%)	27,31,31	0.95	1 (3%)
7	778	B	3012	4	29,32,32	1.02	2 (6%)	36,44,44	1.21	4 (11%)
5	3FX	B	522	-	14,15,15	1.30	1 (7%)	15,20,20	1.48	1 (6%)
5	3FX	B	523	-	14,15,15	1.33	1 (7%)	15,20,20	1.30	2 (13%)
5	3FX	B	524	-	14,15,15	1.25	1 (7%)	15,20,20	1.24	1 (6%)
8	SO4	B	525	-	4,4,4	0.27	0	6,6,6	0.08	0

In the following table, the Chirals column lists the number of chiral outliers, the number of chiral centers analysed, the number of these observed in the model and the number defined in the chemical component dictionary. Similar counts are reported in the Torsion and Rings columns. '-' means no outliers of that kind were identified.

Mol	Type	Chain	Res	Link	Chirals	Torsions	Rings
3	SUC	A	3010	-	-	0/12/51/51	0/2/2/2
3	SUC	B	1002	-	-	0/12/51/51	0/2/2/2
3	SUC	B	3010	-	-	0/12/51/51	0/2/2/2
6	FPP	B	3011	-	-	0/25/25/25	0/0/0/0

*Continued on next page...*

*Continued from previous page...*

Mol	Type	Chain	Res	Link	Chirals	Torsions	Rings
7	778	B	3012	4	-	0/14/27/27	0/4/4/4
5	3FX	B	522	-	-	0/10/18/18	0/1/1/1
5	3FX	B	523	-	-	0/10/18/18	0/1/1/1
5	3FX	B	524	-	-	0/10/18/18	0/1/1/1
8	SO4	B	525	-	-	0/0/0/0	0/0/0/0

All (11) bond length outliers are listed below:

Mol	Chain	Res	Type	Atoms	Z	Observed(Å)	Ideal(Å)
6	B	3011	FPP	C11-C12	-3.72	1.40	1.50
6	B	3011	FPP	C6-C7	-3.62	1.40	1.50
6	B	3011	FPP	C1-C2	-2.60	1.40	1.49
7	B	3012	778	C3-C7	2.01	1.54	1.50
6	B	3011	FPP	C12-C13	2.43	1.39	1.32
7	B	3012	778	C8-N9	3.37	1.42	1.36
5	B	524	3FX	CAK-SAO	3.56	1.83	1.77
5	B	522	3FX	CAK-SAO	3.61	1.83	1.77
5	B	523	3FX	CAK-SAO	3.77	1.83	1.77
6	B	3011	FPP	C7-C8	3.79	1.40	1.33
6	B	3011	FPP	C2-C3	3.79	1.40	1.33

All (11) bond angle outliers are listed below:

Mol	Chain	Res	Type	Atoms	Z	Observed(°)	Ideal(°)
7	B	3012	778	N18-C17-N11	-4.08	106.76	112.28
3	A	3010	SUC	C6'-C5'-C4'	-2.53	109.09	115.08
3	B	3010	SUC	C6'-C5'-C4'	-2.49	109.18	115.08
7	B	3012	778	C7-C3-N1	-2.32	107.56	112.75
6	B	3011	FPP	PA-O3A-PB	-2.18	125.35	132.67
7	B	3012	778	C3-N1-C4	2.07	113.24	110.56
5	B	523	3FX	OAD-SAO-CAK	2.11	108.72	106.94
7	B	3012	778	C4-C8-N9	2.18	120.76	115.92
5	B	523	3FX	OAA-SAO-CAK	3.84	110.18	106.94
5	B	524	3FX	OAD-SAO-CAK	4.00	110.31	106.94
5	B	522	3FX	OAD-SAO-CAK	4.88	111.06	106.94

There are no chirality outliers.

There are no torsion outliers.

There are no ring outliers.

3 monomers are involved in 5 short contacts:

Mol	Chain	Res	Type	Clashes	Symm-Clashes
6	B	3011	FPP	3	0
7	B	3012	778	1	0
5	B	522	3FX	2	0

## 5.7 Other polymers [i](#)

There are no such residues in this entry.

## 5.8 Polymer linkage issues [i](#)

There are no chain breaks in this entry.



## 6 Fit of model and data

### 6.1 Protein, DNA and RNA chains

In the following table, the column labelled ‘#RSRZ > 2’ contains the number (and percentage) of RSRZ outliers, followed by percent RSRZ outliers for the chain as percentile scores relative to all X-ray entries and entries of similar resolution. The OWAB column contains the minimum, median, 95<sup>th</sup> percentile and maximum values of the occupancy-weighted average B-factor per residue. The column labelled ‘Q < 0.9’ lists the number of (and percentage) of residues with an average occupancy less than 0.9.

Mol	Chain	Analysed	<RSRZ>	#RSRZ>2	OWAB(Å <sup>2</sup> )	Q<0.9
1	A	315/349 (90%)	0.09	18 (5%) 27 29	17, 29, 48, 55	0
2	B	485/520 (93%)	0.21	20 (4%) 41 42	14, 22, 37, 57	0
All	All	800/869 (92%)	0.16	38 (4%) 34 36	14, 25, 45, 57	0

All (38) RSRZ outliers are listed below:

Mol	Chain	Res	Type	RSRZ
2	B	349	VAL	6.9
1	A	5	THR	6.0
2	B	371	ILE	4.9
2	B	347	ARG	4.8
1	A	334	ALA	4.7
2	B	481	GLU	4.5
1	A	208	ARG	4.5
2	B	255	GLU	4.3
2	B	51	VAL	4.3
2	B	50	LEU	4.1
1	A	13	ARG	4.0
2	B	348	LYS	3.8
1	A	272	PHE	3.8
1	A	207	SER	3.7
1	A	205	THR	3.6
2	B	257	SER	3.6
2	B	52	SER	3.3
1	A	7	ILE	3.3
2	B	2	ALA	3.3
1	A	139	LEU	3.2
2	B	453	PRO	3.0
2	B	53	GLU	2.8
1	A	304	VAL	2.8
1	A	302	ASN	2.7

*Continued on next page...*

*Continued from previous page...*

Mol	Chain	Res	Type	RSRZ
1	A	6	TYR	2.6
2	B	346	SER	2.5
1	A	257	ALA	2.4
1	A	105	ASN	2.4
2	B	452	ALA	2.4
1	A	11	GLN	2.4
1	A	278	PRO	2.3
1	A	211	GLN	2.3
1	A	274	MET	2.2
2	B	330	VAL	2.2
2	B	233	GLY	2.1
2	B	268	GLY	2.1
2	B	372	PRO	2.1
2	B	196	VAL	2.1

## 6.2 Non-standard residues in protein, DNA, RNA chains [i](#)

There are no non-standard protein/DNA/RNA residues in this entry.

## 6.3 Carbohydrates [i](#)

There are no carbohydrates in this entry.

## 6.4 Ligands [i](#)

In the following table, the Atoms column lists the number of modelled atoms in the group and the number defined in the chemical component dictionary. LLDF column lists the quality of electron density of the group with respect to its neighbouring residues in protein, DNA or RNA chains. The B-factors column lists the minimum, median, 95<sup>th</sup> percentile and maximum values of B factors of atoms in the group. The column labelled 'Q< 0.9' lists the number of atoms with occupancy less than 0.9.

Mol	Type	Chain	Res	Atoms	RSCC	RSR	LLDF	B-factors(Å <sup>2</sup> )	Q<0.9
5	3FX	B	524	15/15	0.82	0.19	2.83	46,48,53,54	0
5	3FX	B	522	15/15	0.97	0.13	2.07	20,21,22,22	0
3	SUC	A	3010	23/23	0.93	0.17	1.40	35,36,37,37	0
3	SUC	B	3010	23/23	0.86	0.17	1.38	43,44,45,45	0
8	SO4	B	525	5/5	0.91	0.18	1.20	38,39,39,39	0
5	3FX	B	523	15/15	0.96	0.14	1.13	37,39,39,40	0
6	FPP	B	3011	24/24	0.97	0.18	0.39	17,19,19,20	0

*Continued on next page...*

*Continued from previous page...*

Mol	Type	Chain	Res	Atoms	RSCC	RSR	LLDF	B-factors( $\text{\AA}^2$ )	Q<0.9
3	SUC	B	1002	23/23	0.92	0.12	0.17	29,31,31,32	0
7	778	B	3012	29/29	0.96	0.15	-0.08	17,19,26,30	0
4	ZN	B	521	1/1	1.00	0.10	-1.01	17,17,17,17	0

## 6.5 Other polymers [i](#)

There are no such residues in this entry.