



Full wwPDB X-ray Structure Validation Report ⓘ

Feb 1, 2016 – 11:58 AM GMT

PDB ID : 3QLF
Title : Crystal structure of the L317I mutant of the C-src tyrosine kinase domain complexed with pyrazolopyrimidine 5
Authors : Boubeva, R.; Pernot, L.; Perozzo, R.; Scapozza, L.
Deposited on : 2011-02-02
Resolution : 2.75 Å(reported)

This is a Full wwPDB X-ray Structure Validation Report for a publicly released PDB entry.
We welcome your comments at validation@mail.wwpdb.org
A user guide is available at
<http://wwpdb.org/validation/2016/XrayValidationReportHelp>
with specific help available everywhere you see the ⓘ symbol.

The following versions of software and data (see [references ⓘ](#)) were used in the production of this report:

MolProbity : 4.02b-467
Mogul : 1.7 (RC4), CSD as536be (2015)
Xtriage (Phenix) : 1.9-1692
EDS : rb-20026688
Percentile statistics : 20151230.v01 (using entries in the PDB archive December 30th 2015)
Refmac : 5.8.0135
CCP4 : 6.5.0
Ideal geometry (proteins) : Engh & Huber (2001)
Ideal geometry (DNA, RNA) : Parkinson et al. (1996)
Validation Pipeline (wwPDB-VP) : trunk26865

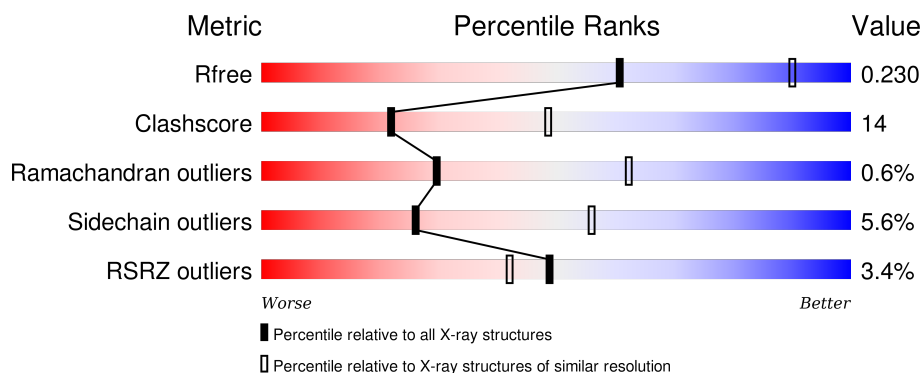
1 Overall quality at a glance

The following experimental techniques were used to determine the structure:

X-RAY DIFFRACTION

The reported resolution of this entry is 2.75 Å.

Percentile scores (ranging between 0-100) for global validation metrics of the entry are shown in the following graphic. The table shows the number of entries on which the scores are based.



Metric	Whole archive (#Entries)	Similar resolution (#Entries, resolution range(Å))
R_{free}	91344	3340 (2.80-2.72)
Clashscore	102246	3829 (2.80-2.72)
Ramachandran outliers	100387	3767 (2.80-2.72)
Sidechain outliers	100360	3770 (2.80-2.72)
RSRZ outliers	91569	3352 (2.80-2.72)

The table below summarises the geometric issues observed across the polymeric chains and their fit to the electron density. The red, orange, yellow and green segments on the lower bar indicate the fraction of residues that contain outliers for ≥ 3 , 2, 1 and 0 types of geometric quality criteria. A grey segment represents the fraction of residues that are not modelled. The numeric value for each fraction is indicated below the corresponding segment, with a dot representing fractions $\leq 5\%$. The upper red bar (where present) indicates the fraction of residues that have poor fit to the electron density. The numeric value is given above the bar.

Mol	Chain	Length	Quality of chain
1	A	286	<div> <div>3%</div> <div>60%</div> <div>26%</div> <div>13%</div> </div>
1	B	286	<div> <div>3%</div> <div>66%</div> <div>21%</div> <div>10%</div> </div>

2 Entry composition

There are 3 unique types of molecules in this entry. The entry contains 4215 atoms, of which 0 are hydrogens and 0 are deuteriums.

In the tables below, the ZeroOcc column contains the number of atoms modelled with zero occupancy, the AltConf column contains the number of residues with at least one atom in alternate conformation and the Trace column contains the number of residues modelled with at most 2 atoms.

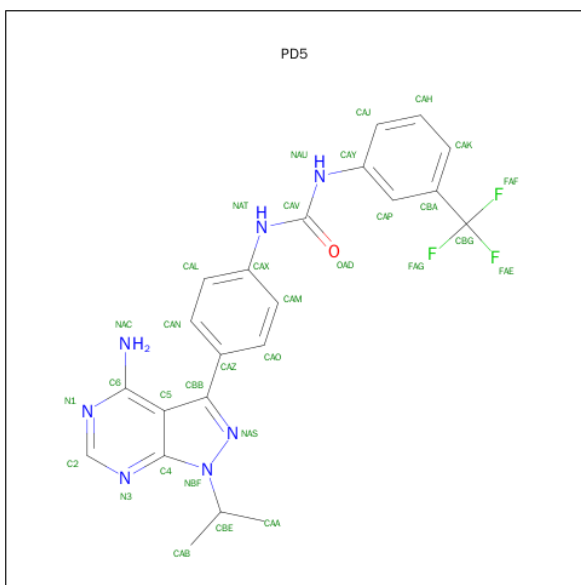
- Molecule 1 is a protein called Proto-oncogene tyrosine-protein kinase Src.

Mol	Chain	Residues	Atoms					ZeroOcc	AltConf	Trace
1	A	249	Total	C	N	O	S	0	1	0
			1996	1280	336	364	16			
1	B	258	Total	C	N	O	S	0	0	0
			2043	1308	344	375	16			

There are 8 discrepancies between the modelled and reference sequences:

Chain	Residue	Modelled	Actual	Comment	Reference
A	248	GLY	-	EXPRESSION TAG	UNP P00523
A	249	HIS	-	EXPRESSION TAG	UNP P00523
A	250	MET	-	EXPRESSION TAG	UNP P00523
A	317	ILE	LEU	ENGINEERED MUTATION	UNP P00523
B	248	GLY	-	EXPRESSION TAG	UNP P00523
B	249	HIS	-	EXPRESSION TAG	UNP P00523
B	250	MET	-	EXPRESSION TAG	UNP P00523
B	317	ILE	LEU	ENGINEERED MUTATION	UNP P00523

- Molecule 2 is 1-{4-[4-AMINO-1-(1-METHYLETHYL)-1H-PYRAZOLO[3,4-D]PYRIMIDIN-3-YL]PHENYL}-3-[3-(TRIFLUOROMETHYL)PHENYL]UREA (three-letter code: PD5) (formula: C₂₂H₂₀F₃N₇O).



Mol	Chain	Residues	Atoms					ZeroOcc	AltConf
2	A	1	Total 33	C 22	F 3	N 7	O 1	0	0
2	B	1	Total 33	C 22	F 3	N 7	O 1	0	0

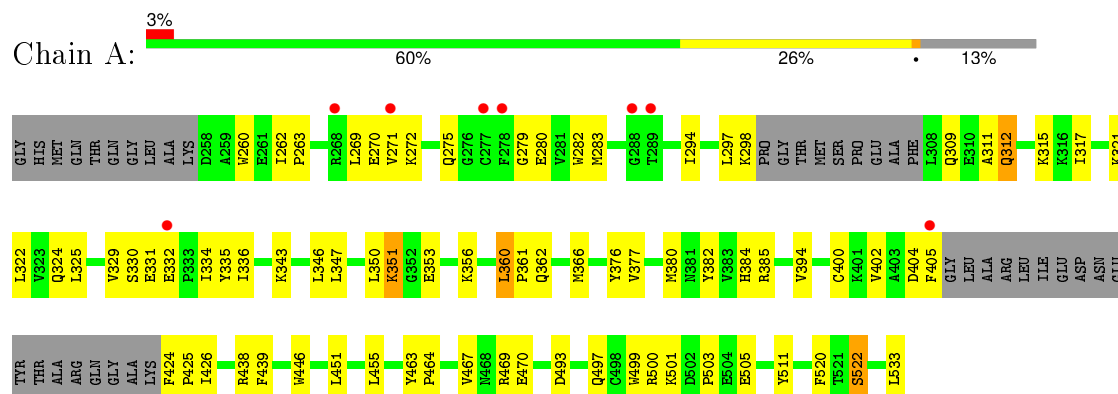
- Molecule 3 is water.

Mol	Chain	Residues	Atoms	ZeroOcc	AltConf
3	A	55	Total O 55 55	0	0
3	B	55	Total O 55 55	0	0

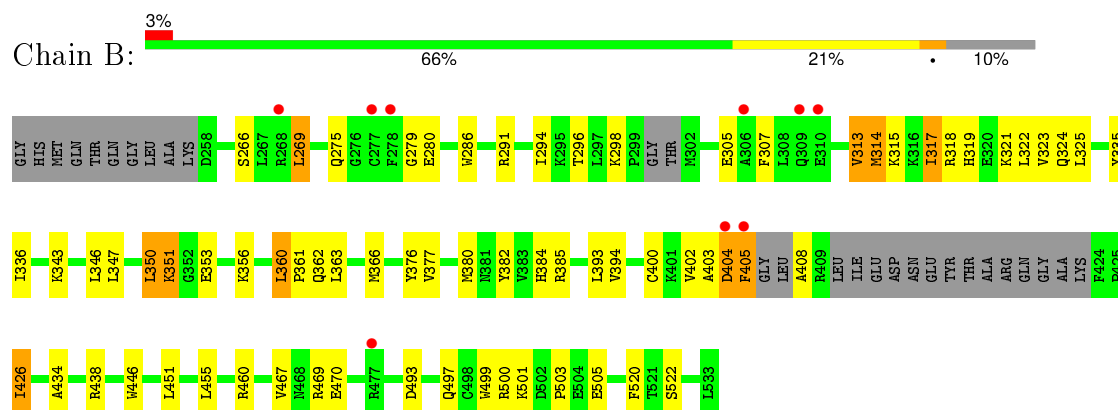
3 Residue-property plots

These plots are drawn for all protein, RNA and DNA chains in the entry. The first graphic for a chain summarises the proportions of errors displayed in the second graphic. The second graphic shows the sequence view annotated by issues in geometry and electron density. Residues are color-coded according to the number of geometric quality criteria for which they contain at least one outlier: green = 0, yellow = 1, orange = 2 and red = 3 or more. A red dot above a residue indicates a poor fit to the electron density ($RSRZ > 2$). Stretches of 2 or more consecutive residues without any outlier are shown as a green connector. Residues present in the sample, but not in the model, are shown in grey.

- Molecule 1: Proto-oncogene tyrosine-protein kinase Src



- Molecule 1: Proto-oncogene tyrosine-protein kinase Src



4 Data and refinement statistics

Property	Value	Source
Space group	P 1	Depositor
Cell constants a, b, c, α , β , γ	42.27Å 63.49Å 73.45Å 79.48° 90.09° 89.41°	Depositor
Resolution (Å)	32.95 – 2.75 32.95 – 2.75	Depositor EDS
% Data completeness (in resolution range)	96.1 (32.95-2.75) 90.2 (32.95-2.75)	Depositor EDS
R_{merge}	0.17	Depositor
R_{sym}	0.12	Depositor
$\langle I/\sigma(I) \rangle$ ¹	2.21 (at 2.76Å)	Xtriage
Refinement program	PHENIX (phenix.refine: 1.6.2_432)	Depositor
R, R_{free}	0.192 , 0.232 0.190 , 0.230	Depositor DCC
R_{free} test set	938 reflections (5.27%)	DCC
Wilson B-factor (Å ²)	36.9	Xtriage
Anisotropy	0.257	Xtriage
Bulk solvent k_{sol} (e/Å ³), B_{sol} (Å ²)	0.33 , 53.7	EDS
Estimated twinning fraction	0.031 for h,-k,-l	Xtriage
L-test for twinning ²	$\langle L \rangle = 0.49$, $\langle L^2 \rangle = 0.31$	Xtriage
Outliers	0 of 18749 reflections	Xtriage
F_o, F_c correlation	0.93	EDS
Total number of atoms	4215	wwPDB-VP
Average B, all atoms (Å ²)	39.0	wwPDB-VP

Xtriage's analysis on translational NCS is as follows: *The largest off-origin peak in the Patterson function is 7.30% of the height of the origin peak. No significant pseudotranslation is detected.*

¹Intensities estimated from amplitudes.

²Theoretical values of $\langle |L| \rangle$, $\langle L^2 \rangle$ for acentric reflections are 0.5, 0.375 respectively for untwinned datasets, and 0.333, 0.2 for perfectly twinned datasets.

5 Model quality

5.1 Standard geometry

Bond lengths and bond angles in the following residue types are not validated in this section: PD5

The Z score for a bond length (or angle) is the number of standard deviations the observed value is removed from the expected value. A bond length (or angle) with $|Z| > 5$ is considered an outlier worth inspection. RMSZ is the root-mean-square of all Z scores of the bond lengths (or angles).

Mol	Chain	Bond lengths		Bond angles	
		RMSZ	# Z >5	RMSZ	# Z >5
1	A	0.29	0/2048	0.46	0/2772
1	B	0.28	0/2090	0.47	0/2830
All	All	0.29	0/4138	0.46	0/5602

There are no bond length outliers.

There are no bond angle outliers.

There are no chirality outliers.

There are no planarity outliers.

5.2 Too-close contacts

In the following table, the Non-H and H(model) columns list the number of non-hydrogen atoms and hydrogen atoms in the chain respectively. The H(added) column lists the number of hydrogen atoms added and optimized by MolProbity. The Clashes column lists the number of clashes within the asymmetric unit, whereas Symm-Clashes lists symmetry related clashes.

Mol	Chain	Non-H	H(model)	H(added)	Clashes	Symm-Clashes
1	A	1996	0	1966	58	0
1	B	2043	0	1994	55	0
2	A	33	0	20	7	0
2	B	33	0	20	5	0
3	A	55	0	0	0	0
3	B	55	0	0	0	0
All	All	4215	0	4000	113	0

The all-atom clashscore is defined as the number of clashes found per 1000 atoms (including hydrogen atoms). The all-atom clashscore for this structure is 14.

All (113) close contacts within the same asymmetric unit are listed below, sorted by their clash

magnitude.

Atom-1	Atom-2	Interatomic distance (Å)	Clash overlap (Å)
1:B:405:PHE:HB3	1:B:408:ALA:HB3	1.31	1.07
1:B:314:MET:SD	2:B:601:PD5:HAJ	2.02	0.99
1:B:405:PHE:CB	1:B:408:ALA:HB3	2.06	0.85
1:B:393:LEU:HD11	2:B:601:PD5:HAN	1.58	0.83
1:B:269:LEU:HD22	1:B:294:ILE:HD13	1.68	0.74
1:A:269:LEU:HD23	1:A:294:ILE:HD12	1.69	0.72
1:B:405:PHE:HB3	1:B:408:ALA:CB	2.16	0.70
1:A:404:ASP:HB2	2:A:601:PD5:HAL	1.74	0.70
1:A:279:GLY:HA2	1:A:298:LYS:HE2	1.76	0.67
1:A:311:ALA:HB1	1:A:315:LYS:HE3	1.77	0.66
1:B:405:PHE:HA	1:B:408:ALA:N	2.11	0.65
1:A:522:SER:HB3	1:B:347:LEU:HD21	1.78	0.64
1:B:314:MET:SD	2:B:601:PD5:CAJ	2.84	0.64
2:A:601:PD5:OAD	2:A:601:PD5:HAP	1.98	0.64
1:B:451:LEU:HD23	1:B:451:LEU:O	1.98	0.64
1:A:451:LEU:HD23	1:A:451:LEU:O	1.98	0.63
1:A:269:LEU:CD2	1:A:294:ILE:HD12	2.29	0.61
1:A:269:LEU:HD22	1:A:282:TRP:HB2	1.83	0.61
1:B:363:LEU:HD23	1:B:366:MET:HE2	1.84	0.59
1:B:269:LEU:HD23	1:B:269:LEU:N	2.19	0.58
1:A:500:ARG:HD2	1:A:505:GLU:HB3	1.84	0.58
1:A:317:ILE:HG23	1:A:322:LEU:HD12	1.87	0.57
1:A:309:GLN:O	1:A:312:GLN:HG2	2.05	0.57
1:B:405:PHE:CD1	1:B:405:PHE:N	2.72	0.57
1:B:500:ARG:HD2	1:B:505:GLU:HB3	1.85	0.56
1:A:384:HIS:CE1	1:A:405:PHE:HB3	2.39	0.56
1:A:330:SER:O	1:A:334:ILE:HG12	2.05	0.56
1:B:384:HIS:O	1:B:385:ARG:HB2	2.05	0.55
1:A:343:LYS:HB2	1:A:394:VAL:HB	1.89	0.54
1:A:405:PHE:CE2	2:A:601:PD5:HAK	2.42	0.54
1:B:376:TYR:O	1:B:380:MET:HG2	2.07	0.54
1:A:346:LEU:HD11	1:A:366:MET:HE3	1.90	0.53
1:A:376:TYR:O	1:A:380:MET:HG2	2.08	0.53
1:A:384:HIS:NE2	1:A:405:PHE:HB3	2.24	0.53
1:A:322:LEU:HD22	1:A:402:VAL:HB	1.89	0.52
1:B:347:LEU:O	1:B:351:LYS:HG2	2.10	0.52
1:A:347:LEU:O	1:A:351:LYS:HG2	2.09	0.52
1:A:385[A]:ARG:HG2	1:A:439:PHE:CD2	2.45	0.52
1:A:493:ASP:O	1:A:497:GLN:HG3	2.11	0.51
1:A:353:GLU:O	1:A:356:LYS:HE3	2.11	0.51
1:B:319:HIS:CD2	1:B:376:TYR:HB2	2.47	0.50

Continued on next page...

Continued from previous page...

Atom-1	Atom-2	Interatomic distance (Å)	Clash overlap (Å)
1:B:353:GLU:O	1:B:356:LYS:HE3	2.12	0.50
1:B:314:MET:SD	1:B:405:PHE:CE1	3.04	0.50
1:A:294:ILE:HA	1:A:336:ILE:O	2.11	0.50
1:A:384:HIS:O	1:A:385[A]:ARG:HB2	2.11	0.50
1:A:297:LEU:O	1:A:298:LYS:HD3	2.11	0.49
1:B:366:MET:HB3	1:B:400:CYS:SG	2.52	0.49
1:B:322:LEU:HD22	1:B:402:VAL:HB	1.94	0.49
1:B:275:GLN:HE21	1:B:280:GLU:HG2	1.78	0.48
1:A:404:ASP:HA	2:A:601:PD5:CAY	2.43	0.48
1:A:362:GLN:O	1:A:366:MET:HG3	2.13	0.48
1:B:493:ASP:O	1:B:497:GLN:HG3	2.13	0.48
2:A:601:PD5:OAD	2:A:601:PD5:CAP	2.61	0.48
1:B:343:LYS:HB2	1:B:394:VAL:HB	1.96	0.48
1:A:335:TYR:C	1:A:336:ILE:HG13	2.35	0.47
1:B:405:PHE:CA	1:B:408:ALA:HB3	2.45	0.47
1:A:321:LYS:O	1:A:322:LEU:HD23	2.16	0.46
1:B:275:GLN:NE2	1:B:280:GLU:HG2	2.29	0.46
1:A:271:VAL:HG12	1:A:272:LYS:O	2.15	0.46
1:A:262:ILE:HB	1:A:263:PRO:HD2	1.98	0.46
1:A:360:LEU:HB2	1:A:533:LEU:OXT	2.16	0.46
1:A:360:LEU:HB3	1:A:361:PRO:HD3	1.98	0.46
1:A:271:VAL:HG12	1:A:272:LYS:N	2.29	0.46
1:B:321:LYS:O	1:B:322:LEU:HD23	2.16	0.46
1:B:305:GLU:C	1:B:307:PHE:H	2.19	0.46
1:A:384:HIS:O	1:A:385[B]:ARG:HB2	2.14	0.46
1:A:404:ASP:H	2:A:601:PD5:CAP	2.28	0.46
1:A:269:LEU:HD22	1:A:282:TRP:CB	2.46	0.45
1:B:269:LEU:HD11	1:B:335:TYR:HE2	1.81	0.45
1:B:336:ILE:CD1	2:B:601:PD5:CBA	2.95	0.44
1:B:279:GLY:HA3	1:B:296:THR:O	2.17	0.44
1:B:360:LEU:HB3	1:B:361:PRO:HD3	1.98	0.44
1:A:404:ASP:H	2:A:601:PD5:HAP	1.83	0.44
1:A:360:LEU:HD13	1:A:520:PHE:HZ	1.81	0.44
1:A:467:VAL:HG22	1:A:470:GLU:HG2	2.00	0.44
1:A:335:TYR:O	1:A:336:ILE:HG13	2.17	0.43
1:B:323:VAL:HG21	1:B:393:LEU:HD12	2.01	0.43
1:B:446:TRP:CE3	1:B:499:TRP:HA	2.54	0.43
1:A:346:LEU:HD21	1:A:455:LEU:HD21	2.01	0.43
1:B:346:LEU:HD21	1:B:455:LEU:HD21	2.00	0.43
1:B:362:GLN:O	1:B:366:MET:HG3	2.19	0.43
1:A:424:PHE:HA	1:A:425:PRO:HD3	1.79	0.43

Continued on next page...

Continued from previous page...

Atom-1	Atom-2	Interatomic distance (Å)	Clash overlap (Å)
1:B:460:ARG:HD2	1:B:460:ARG:HA	1.79	0.43
1:B:319:HIS:HD2	1:B:376:TYR:CD1	2.37	0.43
1:A:260:TRP:CD1	1:A:315:LYS:HD3	2.54	0.42
1:A:360:LEU:HD13	1:A:520:PHE:CZ	2.55	0.42
1:A:446:TRP:CE3	1:A:499:TRP:HA	2.54	0.42
1:B:361:PRO:HA	1:B:520:PHE:CE2	2.54	0.42
1:B:350:LEU:HA	1:B:350:LEU:HD12	1.87	0.42
1:A:501:LYS:O	1:A:503:PRO:HD3	2.20	0.42
1:B:313:VAL:O	1:B:315:LYS:N	2.53	0.42
1:B:501:LYS:O	1:B:503:PRO:HD3	2.19	0.42
1:B:298:LYS:HE2	1:B:298:LYS:N	2.35	0.42
1:A:511:TYR:HE2	1:B:351:LYS:O	2.03	0.42
1:A:463:TYR:N	1:A:464:PRO:HD3	2.34	0.41
1:A:366:MET:HB3	1:A:400:CYS:SG	2.61	0.41
1:B:336:ILE:HD13	2:B:601:PD5:CBA	2.51	0.41
1:A:280:GLU:HB2	1:A:282:TRP:HE1	1.86	0.41
1:A:329:VAL:O	1:A:334:ILE:HA	2.21	0.41
1:B:317:ILE:HD13	1:B:317:ILE:H	1.85	0.41
1:B:266:SER:O	1:B:286:TRP:HA	2.21	0.41
1:B:377:VAL:HG13	1:B:382:TYR:HB2	2.03	0.41
1:A:356:LYS:HB3	1:A:356:LYS:HE2	1.94	0.41
1:A:377:VAL:HG13	1:A:382:TYR:HB2	2.03	0.41
1:A:330:SER:O	1:A:331:GLU:C	2.59	0.41
1:B:314:MET:CE	1:B:405:PHE:CE1	3.04	0.40
1:B:403:ALA:O	1:B:404:ASP:HB2	2.20	0.40
1:B:426:ILE:HD11	1:B:434:ALA:HB1	2.02	0.40
1:B:467:VAL:HG22	1:B:470:GLU:HG2	2.03	0.40
1:A:324:GLN:HG3	1:A:325:LEU:O	2.22	0.40
1:B:405:PHE:HB3	1:B:408:ALA:O	2.22	0.40
1:A:309:GLN:C	1:A:311:ALA:H	2.24	0.40
1:B:324:GLN:HG3	1:B:325:LEU:O	2.22	0.40

There are no symmetry-related clashes.

5.3 Torsion angles [i](#)

5.3.1 Protein backbone [i](#)

In the following table, the Percentiles column shows the percent Ramachandran outliers of the chain as a percentile score with respect to all X-ray entries followed by that with respect to entries of similar resolution.

The Analysed column shows the number of residues for which the backbone conformation was analysed, and the total number of residues.

Mol	Chain	Analysed	Favoured	Allowed	Outliers	Percentiles	
1	A	244/286 (85%)	226 (93%)	17 (7%)	1 (0%)	39	72
1	B	250/286 (87%)	236 (94%)	12 (5%)	2 (1%)	24	55
All	All	494/572 (86%)	462 (94%)	29 (6%)	3 (1%)	30	62

All (3) Ramachandran outliers are listed below:

Mol	Chain	Res	Type
1	A	270	GLU
1	B	314	MET
1	B	313	VAL

5.3.2 Protein sidechains ⓘ

In the following table, the Percentiles column shows the percent sidechain outliers of the chain as a percentile score with respect to all X-ray entries followed by that with respect to entries of similar resolution.

The Analysed column shows the number of residues for which the sidechain conformation was analysed, and the total number of residues.

Mol	Chain	Analysed	Rotameric	Outliers	Percentiles	
1	A	212/245 (86%)	201 (95%)	11 (5%)	29	60
1	B	214/245 (87%)	201 (94%)	13 (6%)	23	52
All	All	426/490 (87%)	402 (94%)	24 (6%)	26	56

All (24) residues with a non-rotameric sidechain are listed below:

Mol	Chain	Res	Type
1	A	275	GLN
1	A	283	MET
1	A	312	GLN
1	A	332	GLU
1	A	350	LEU
1	A	351	LYS
1	A	360	LEU
1	A	426	ILE
1	A	438	ARG
1	A	469	ARG

Continued on next page...

Continued from previous page...

Mol	Chain	Res	Type
1	A	522	SER
1	B	269	LEU
1	B	291	ARG
1	B	317	ILE
1	B	318	ARG
1	B	350	LEU
1	B	351	LYS
1	B	360	LEU
1	B	404	ASP
1	B	405	PHE
1	B	426	ILE
1	B	438	ARG
1	B	469	ARG
1	B	522	SER

Some sidechains can be flipped to improve hydrogen bonding and reduce clashes. All (3) such sidechains are listed below:

Mol	Chain	Res	Type
1	A	397	ASN
1	B	397	ASN
1	B	474	GLN

5.3.3 RNA [i](#)

There are no RNA molecules in this entry.

5.4 Non-standard residues in protein, DNA, RNA chains [i](#)

There are no non-standard protein/DNA/RNA residues in this entry.

5.5 Carbohydrates [i](#)

There are no carbohydrates in this entry.

5.6 Ligand geometry [i](#)

2 ligands are modelled in this entry.

In the following table, the Counts columns list the number of bonds (or angles) for which Mogul statistics could be retrieved, the number of bonds (or angles) that are observed in the model and the number of bonds (or angles) that are defined in the chemical component dictionary. The Link column lists molecule types, if any, to which the group is linked. The Z score for a bond length (or angle) is the number of standard deviations the observed value is removed from the expected value. A bond length (or angle) with $|Z| > 2$ is considered an outlier worth inspection. RMSZ is the root-mean-square of all Z scores of the bond lengths (or angles).

Mol	Type	Chain	Res	Link	Bond lengths			Bond angles		
					Counts	RMSZ	$\# Z > 2$	Counts	RMSZ	$\# Z > 2$
2	PD5	A	601	-	34,36,36	1.37	3 (8%)	42,53,53	1.76	13 (30%)
2	PD5	B	601	-	34,36,36	1.30	2 (5%)	42,53,53	1.74	11 (26%)

In the following table, the Chirals column lists the number of chiral outliers, the number of chiral centers analysed, the number of these observed in the model and the number defined in the chemical component dictionary. Similar counts are reported in the Torsion and Rings columns. '-' means no outliers of that kind were identified.

Mol	Type	Chain	Res	Link	Chirals	Torsions	Rings
2	PD5	A	601	-	-	0/20/22/22	0/4/4/4
2	PD5	B	601	-	-	0/20/22/22	0/4/4/4

All (5) bond length outliers are listed below:

Mol	Chain	Res	Type	Atoms	Z	Observed(Å)	Ideal(Å)
2	A	601	PD5	CAZ-CBB	-5.71	1.42	1.49
2	B	601	PD5	CAZ-CBB	-5.37	1.43	1.49
2	B	601	PD5	CAV-NAU	2.16	1.41	1.37
2	A	601	PD5	CAV-NAU	2.19	1.41	1.37
2	A	601	PD5	CBG-CBA	2.30	1.54	1.49

All (24) bond angle outliers are listed below:

Mol	Chain	Res	Type	Atoms	Z	Observed(°)	Ideal(°)
2	A	601	PD5	CAY-NAU-CAV	-3.63	119.65	126.65
2	B	601	PD5	CAB-CBE-NBF	-3.48	106.98	111.46
2	A	601	PD5	CAZ-CBB-NAS	-3.36	116.36	120.71
2	A	601	PD5	CAB-CBE-NBF	-3.32	107.19	111.46
2	B	601	PD5	CAA-CBE-NBF	-2.94	107.68	111.46
2	B	601	PD5	CAY-CAP-CBA	-2.85	116.18	119.84
2	A	601	PD5	CAX-NAT-CAV	-2.85	121.15	126.65
2	A	601	PD5	CAA-CBE-NBF	-2.79	107.87	111.46
2	B	601	PD5	CAO-CAM-CAX	-2.45	117.53	120.28
2	B	601	PD5	NAU-CAV-NAT	-2.39	108.78	112.53

Continued on next page...

Continued from previous page...

Mol	Chain	Res	Type	Atoms	Z	Observed(°)	Ideal(°)
2	B	601	PD5	CAK-CBA-CBG	-2.34	116.48	119.99
2	A	601	PD5	CAN-CAL-CAX	-2.24	117.76	120.28
2	A	601	PD5	CAN-CAZ-CBB	-2.20	117.16	120.70
2	A	601	PD5	CAO-CAM-CAX	-2.16	117.86	120.28
2	A	601	PD5	CAM-CAO-CAZ	-2.13	118.03	121.14
2	B	601	PD5	CAZ-CBB-NAS	-2.02	118.10	120.71
2	A	601	PD5	N3-C2-N1	2.38	130.71	128.89
2	A	601	PD5	CBB-NAS-NBF	2.43	107.08	105.34
2	B	601	PD5	N3-C2-N1	2.77	131.02	128.89
2	B	601	PD5	CAK-CBA-CAP	3.14	123.67	117.63
2	B	601	PD5	CAL-CAX-CAM	3.15	123.44	119.06
2	A	601	PD5	CAL-CAX-CAM	3.25	123.58	119.06
2	B	601	PD5	CAO-CAZ-CAN	3.31	123.82	117.55
2	A	601	PD5	CAO-CAZ-CAN	3.41	123.99	117.55

There are no chirality outliers.

There are no torsion outliers.

There are no ring outliers.

2 monomers are involved in 12 short contacts:

Mol	Chain	Res	Type	Clashes	Symm-Clashes
2	A	601	PD5	7	0
2	B	601	PD5	5	0

5.7 Other polymers [i](#)

There are no such residues in this entry.

5.8 Polymer linkage issues [i](#)

There are no chain breaks in this entry.

6 Fit of model and data ⓘ

6.1 Protein, DNA and RNA chains ⓘ

In the following table, the column labelled ‘#RSRZ> 2’ contains the number (and percentage) of RSRZ outliers, followed by percent RSRZ outliers for the chain as percentile scores relative to all X-ray entries and entries of similar resolution. The OWAB column contains the minimum, median, 95th percentile and maximum values of the occupancy-weighted average B-factor per residue. The column labelled ‘Q< 0.9’ lists the number of (and percentage) of residues with an average occupancy less than 0.9.

Mol	Chain	Analysed	<RSRZ>	#RSRZ>2	OWAB(Å ²)	Q<0.9
1	A	249/286 (87%)	-0.03	8 (3%) 51 44	11, 34, 79, 111	0
1	B	258/286 (90%)	-0.17	9 (3%) 48 41	16, 35, 81, 135	0
All	All	507/572 (88%)	-0.10	17 (3%) 49 42	11, 34, 81, 135	0

All (17) RSRZ outliers are listed below:

Mol	Chain	Res	Type	RSRZ
1	B	277	CYS	5.5
1	A	277	CYS	3.9
1	A	278	PHE	3.8
1	A	405	PHE	3.2
1	B	309	GLN	3.2
1	A	271	VAL	3.2
1	A	332	GLU	3.0
1	B	477	ARG	2.9
1	A	288	GLY	2.8
1	B	278	PHE	2.8
1	B	405	PHE	2.8
1	B	404	ASP	2.6
1	B	306	ALA	2.5
1	A	268	ARG	2.4
1	B	268	ARG	2.1
1	A	289	THR	2.1
1	B	310	GLU	2.1

6.2 Non-standard residues in protein, DNA, RNA chains ⓘ

There are no non-standard protein/DNA/RNA residues in this entry.

6.3 Carbohydrates [i](#)

There are no carbohydrates in this entry.

6.4 Ligands [i](#)

In the following table, the Atoms column lists the number of modelled atoms in the group and the number defined in the chemical component dictionary. LLDF column lists the quality of electron density of the group with respect to its neighbouring residues in protein, DNA or RNA chains. The B-factors column lists the minimum, median, 95th percentile and maximum values of B factors of atoms in the group. The column labelled 'Q< 0.9' lists the number of atoms with occupancy less than 0.9.

Mol	Type	Chain	Res	Atoms	RSCC	RSR	LLDF	B-factors(\AA^2)	Q<0.9
2	PD5	B	601	33/33	0.90	0.21	0.31	41,41,41,41	0
2	PD5	A	601	33/33	0.94	0.19	0.18	54,54,54,54	0

6.5 Other polymers [i](#)

There are no such residues in this entry.