



Full wwPDB X-ray Structure Validation Report ⓘ

Feb 1, 2016 – 08:17 PM GMT

PDB ID : 4RET
Title : Crystal structure of the Na,K-ATPase E2P-digoxin complex with bound magnesium
Authors : Gregersen, J.L.; Laursen, M.; Yatime, L.; Nissen, P.; Fedosova, N.U.
Deposited on : 2014-09-23
Resolution : 4.00 Å(reported)

This is a Full wwPDB X-ray Structure Validation Report for a publicly released PDB entry.
We welcome your comments at validation@mail.wwpdb.org
A user guide is available at
<http://wwpdb.org/validation/2016/XrayValidationReportHelp>
with specific help available everywhere you see the ⓘ symbol.

The following versions of software and data (see [references ⓘ](#)) were used in the production of this report:

MolProbity : 4.02b-467
Mogul : 1.7 (RC4), CSD as536be (2015)
Xtriage (Phenix) : 1.9-1692
EDS : rb-20026688
Percentile statistics : 20151230.v01 (using entries in the PDB archive December 30th 2015)
Refmac : 5.8.0135
CCP4 : 6.5.0
Ideal geometry (proteins) : Engh & Huber (2001)
Ideal geometry (DNA, RNA) : Parkinson et al. (1996)
Validation Pipeline (wwPDB-VP) : trunk26865

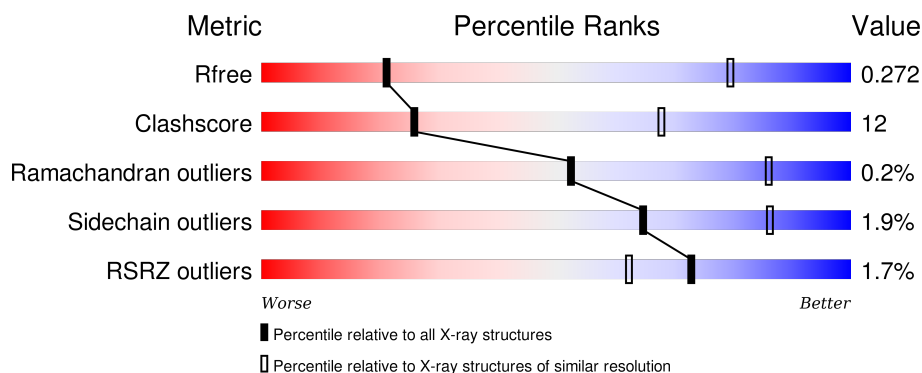
1 Overall quality at a glance

The following experimental techniques were used to determine the structure:

X-RAY DIFFRACTION

The reported resolution of this entry is 4.00 Å.

Percentile scores (ranging between 0-100) for global validation metrics of the entry are shown in the following graphic. The table shows the number of entries on which the scores are based.



Metric	Whole archive (#Entries)	Similar resolution (#Entries, resolution range(Å))
R_{free}	91344	1010 (4.42-3.56)
Clashscore	102246	1052 (4.40-3.60)
Ramachandran outliers	100387	1005 (4.40-3.60)
Sidechain outliers	100360	1013 (4.42-3.58)
RSRZ outliers	91569	1013 (4.42-3.56)

The table below summarises the geometric issues observed across the polymeric chains and their fit to the electron density. The red, orange, yellow and green segments on the lower bar indicate the fraction of residues that contain outliers for ≥ 3 , 2, 1 and 0 types of geometric quality criteria. A grey segment represents the fraction of residues that are not modelled. The numeric value for each fraction is indicated below the corresponding segment, with a dot representing fractions $\leq 5\%$. The upper red bar (where present) indicates the fraction of residues that have poor fit to the electron density. The numeric value is given above the bar.

Mol	Chain	Length	Quality of chain
1	A	1021	<div> <div></div> <div>71% 26% .</div> </div>
1	C	1021	<div> <div>2%</div> <div>71% 26% .</div> </div>
2	B	303	<div> <div></div> <div>64% 29% . .</div> </div>
2	D	303	<div> <div>2%</div> <div>64% 29% . 5%</div> </div>
3	E	65	<div> <div></div> <div>40% 8% . 51%</div> </div>

Continued on next page...

Continued from previous page...

Mol	Chain	Length	Quality of chain
3	G	65	

The following table lists non-polymeric compounds, carbohydrate monomers and non-standard residues in protein, DNA, RNA chains that are outliers for geometric or electron-density-fit criteria:

Mol	Type	Chain	Res	Chirality	Geometry	Clashes	Electron density
4	MG	A	1102	-	-	-	X
4	MG	C	2002	-	-	-	X
5	CLR	C	2004	-	-	-	X
6	SUC	A	1105	-	-	X	-
8	17F	A	1108	-	-	-	X
8	17F	B	1004	-	-	-	X

2 Entry composition

There are 11 unique types of molecules in this entry. The entry contains 21123 atoms, of which 0 are hydrogens and 0 are deuteriums.

In the tables below, the ZeroOcc column contains the number of atoms modelled with zero occupancy, the AltConf column contains the number of residues with at least one atom in alternate conformation and the Trace column contains the number of residues modelled with at most 2 atoms.

- Molecule 1 is a protein called Sodium/potassium-transporting ATPase subunit alpha-1.

Mol	Chain	Residues	Atoms						ZeroOcc	AltConf	Trace
1	A	996	Total	C	N	O	P	S	0	0	0
			7730	4922	1301	1459	1	47			
1	C	996	Total	C	N	O	P	S	0	0	0
			7730	4922	1301	1459	1	47			

- Molecule 2 is a protein called Sodium/potassium-transporting ATPase subunit beta-1.

Mol	Chain	Residues	Atoms					ZeroOcc	AltConf	Trace
2	B	290	Total	C	N	O	S	0	0	0
			2377	1540	388	436	13			
2	D	288	Total	C	N	O	S	0	0	0
			2357	1525	385	434	13			

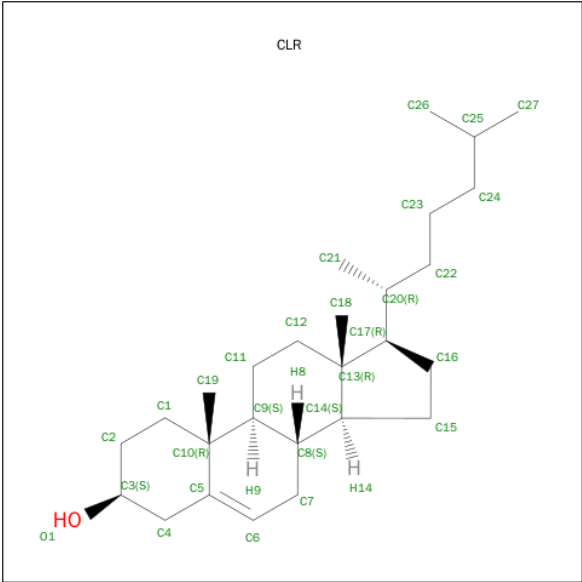
- Molecule 3 is a protein called Na⁺/K⁺ ATPase gamma subunit transcript variant a.

Mol	Chain	Residues	Atoms				ZeroOcc	AltConf	Trace
3	G	32	Total	C	N	O	0	0	0
			255	174	37	44			
3	E	32	Total	C	N	O	0	0	0
			255	174	37	44			

- Molecule 4 is MAGNESIUM ION (three-letter code: MG) (formula: Mg).

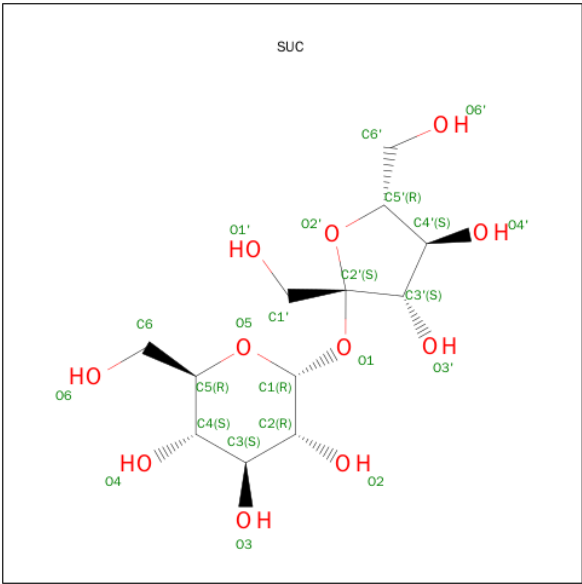
Mol	Chain	Residues	Atoms		ZeroOcc	AltConf
4	A	3	Total	Mg	0	0
			3	3		
4	C	3	Total	Mg	0	0
			3	3		

- Molecule 5 is CHOLESTEROL (three-letter code: CLR) (formula: C₂₇H₄₆O).



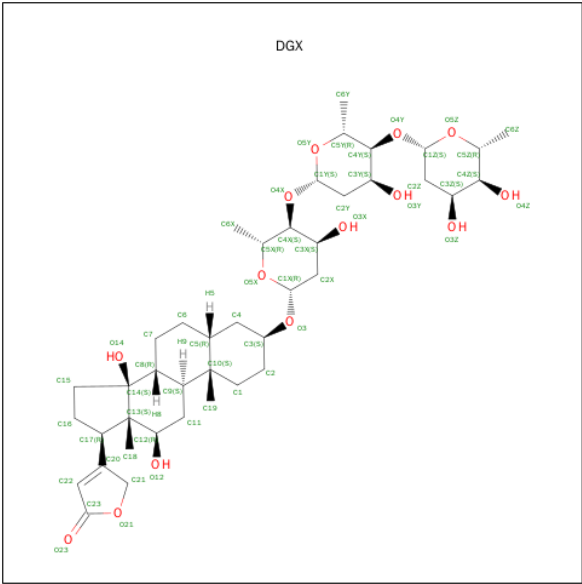
Mol	Chain	Residues	Atoms			ZeroOcc	AltConf
5	A	1	Total	C	O	0	0
			28	27	1		
5	G	1	Total	C	O	0	0
			28	27	1		
5	C	1	Total	C	O	0	0
			28	27	1		
5	C	1	Total	C	O	0	0
			28	27	1		

- Molecule 6 is SUGAR (SUCROSE) (three-letter code: SUC) (formula: C₁₂H₂₂O₁₁).



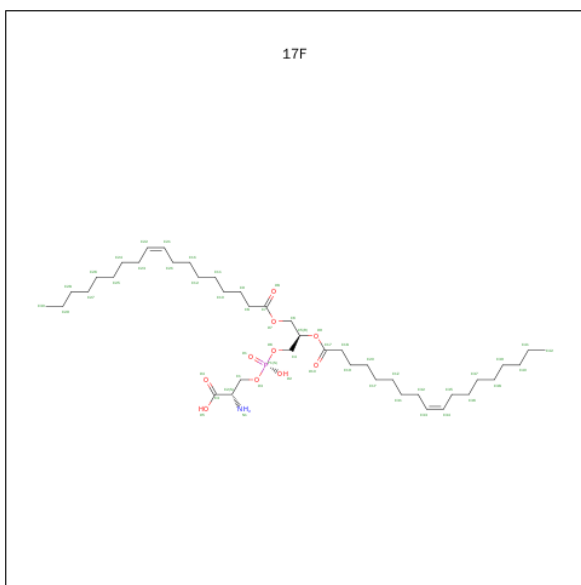
Mol	Chain	Residues	Atoms			ZeroOcc	AltConf
6	A	1	Total	C	O	0	0
			23	12	11		
6	A	1	Total	C	O	0	0
			23	12	11		

- Molecule 7 is DIGOXIN (three-letter code: DGX) (formula: C₄₁H₆₄O₁₄).



Mol	Chain	Residues	Atoms			ZeroOcc	AltConf
7	A	1	Total	C	O	0	0
			55	41	14		
7	C	1	Total	C	O	0	0
			55	41	14		

- Molecule 8 is O-[(S)-({(2R)-2,3-BIS[(9Z)-OCTADEC-9-ENOYLOXY]PROPYL}OXY)(HYDROXY)PHOSPHORYL]-L-SERINE (three-letter code: 17F) (formula: C₄₂H₇₈NO₁₀P).



Mol	Chain	Residues	Atoms					ZeroOcc	AltConf
8	A	1	Total	C	N	O	P	0	0
			16	6	1	8	1		
8	A	1	Total	C	N	O	P	0	0
			15	6	1	7	1		
8	B	1	Total	C	N	O	P	0	0
			24	13	1	9	1		

- Molecule 9 is a polymer of unknown type called SUGAR (2-MER).

Mol	Chain	Residues	Atoms				ZeroOcc	AltConf
9	B	2	Total	C	N	O	0	0
			28	16	2	10		

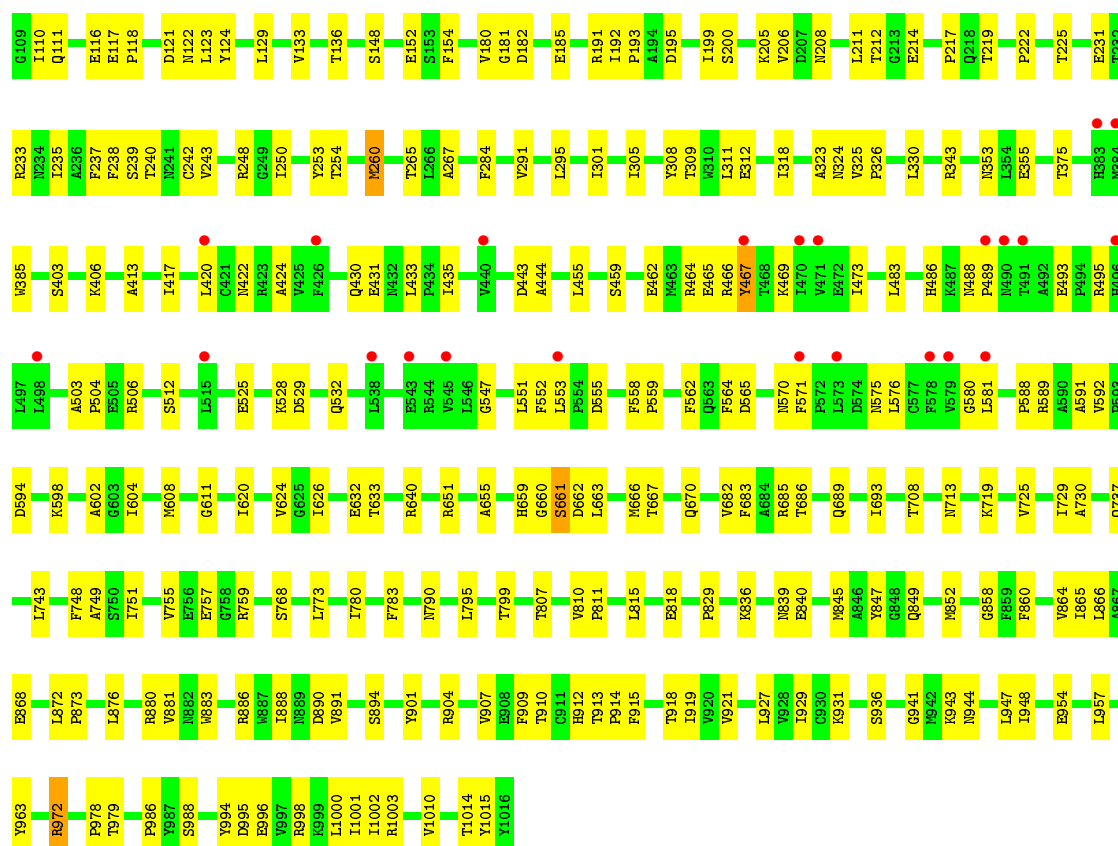
- Molecule 10 is SUGAR (N-ACETYL-D-GLUCOSAMINE) (three-letter code: NAG) (formula: C₈H₁₅NO₆).



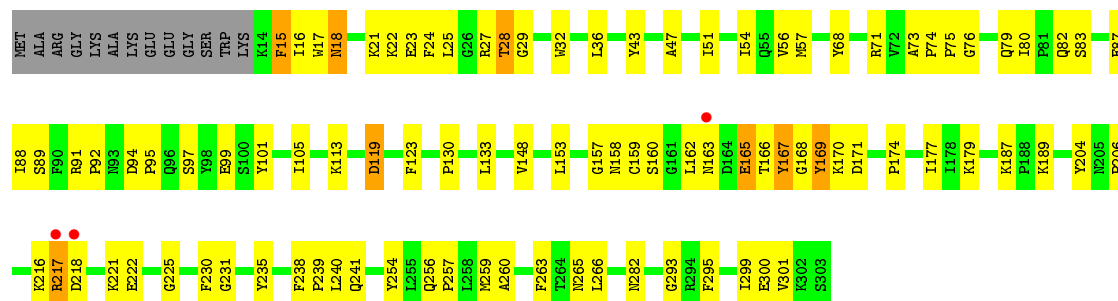
Mol	Chain	Residues	Atoms				ZeroOcc	AltConf
10	B	1	Total	C	N	O	0	0
			14	8	1	5		
10	D	1	Total	C	N	O	0	0
			14	8	1	5		
10	D	1	Total	C	N	O	0	0
			14	8	1	5		
10	D	1	Total	C	N	O	0	0
			14	8	1	5		

- Molecule 11 is water.

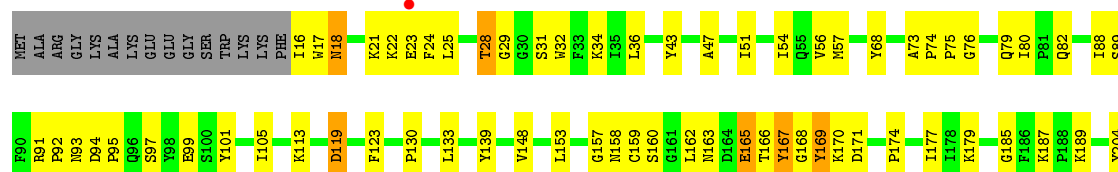
Mol	Chain	Residues	Atoms		ZeroOcc	AltConf
11	A	3	Total	O	0	0
			3	3		
11	C	3	Total	O	0	0
			3	3		

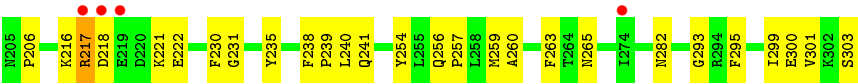


• Molecule 2: Sodium/potassium-transporting ATPase subunit beta-1

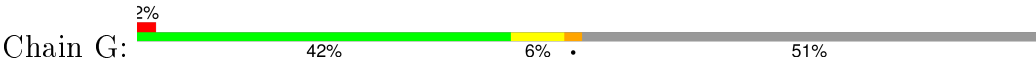


• Molecule 2: Sodium/potassium-transporting ATPase subunit beta-1

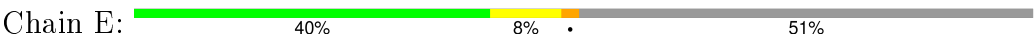




● Molecule 3: Na⁺/K⁺ ATPase gamma subunit transcript variant a



● Molecule 3: Na⁺/K⁺ ATPase gamma subunit transcript variant a



4 Data and refinement statistics

Property	Value	Source
Space group	P 21 21 21	Depositor
Cell constants a, b, c, α , β , γ	118.24Å 118.35Å 494.09Å 90.00° 90.00° 90.00°	Depositor
Resolution (Å)	49.41 – 4.00 49.41 – 3.89	Depositor EDS
% Data completeness (in resolution range)	72.2 (49.41-4.00) 68.6 (49.41-3.89)	Depositor EDS
R_{merge}	(Not available)	Depositor
R_{sym}	(Not available)	Depositor
$\langle I/\sigma(I) \rangle$ ¹	1.45 (at 3.88Å)	Xtriage
Refinement program	PHENIX (phenix.refine: dev_1593)	Depositor
R, R_{free}	0.221 , 0.253 0.257 , 0.272	Depositor DCC
R_{free} test set	2196 reflections (4.96%)	DCC
Wilson B-factor (Å ²)	153.1	Xtriage
Anisotropy	0.084	Xtriage
Bulk solvent k_{sol} (e/Å ³), B_{sol} (Å ²)	0.27 , 125.6	EDS
Estimated twinning fraction	0.044 for k,h,-l	Xtriage
L-test for twinning ²	$\langle L \rangle = 0.45$, $\langle L^2 \rangle = 0.28$	Xtriage
Outliers	1 of 44534 reflections (0.002%)	Xtriage
F_o, F_c correlation	0.91	EDS
Total number of atoms	21123	wwPDB-VP
Average B, all atoms (Å ²)	198.0	wwPDB-VP

Xtriage's analysis on translational NCS is as follows: *The largest off-origin peak in the Patterson function is 2.94% of the height of the origin peak. No significant pseudotranslation is detected.*

¹Intensities estimated from amplitudes.

²Theoretical values of $\langle |L| \rangle$, $\langle L^2 \rangle$ for acentric reflections are 0.5, 0.375 respectively for untwinned datasets, and 0.333, 0.2 for perfectly twinned datasets.

5 Model quality [i](#)

5.1 Standard geometry [i](#)

Bond lengths and bond angles in the following residue types are not validated in this section: MG, SUC, NAG, 17F, PHD, DGX, CLR

The Z score for a bond length (or angle) is the number of standard deviations the observed value is removed from the expected value. A bond length (or angle) with $|Z| > 5$ is considered an outlier worth inspection. RMSZ is the root-mean-square of all Z scores of the bond lengths (or angles).

Mol	Chain	Bond lengths		Bond angles	
		RMSZ	# $ Z > 5$	RMSZ	# $ Z > 5$
1	A	0.29	2/7867 (0.0%)	0.46	0/10674
1	C	0.29	3/7867 (0.0%)	0.46	0/10674
2	B	0.29	0/2440	0.53	0/3290
2	D	0.29	0/2419	0.52	0/3263
3	E	0.26	0/261	0.45	0/354
3	G	0.27	0/261	0.45	0/354
All	All	0.29	5/21115 (0.0%)	0.48	0/28609

Chiral center outliers are detected by calculating the chiral volume of a chiral center and verifying if the center is modelled as a planar moiety or with the opposite hand. A planarity outlier is detected by checking planarity of atoms in a peptide group, atoms in a mainchain group or atoms of a sidechain that are expected to be planar.

Mol	Chain	#Chirality outliers	#Planarity outliers
2	B	0	3
2	D	0	2
All	All	0	5

All (5) bond length outliers are listed below:

Mol	Chain	Res	Type	Atoms	Z	Observed(Å)	Ideal(Å)
1	C	737	GLN	CD-NE2	-6.42	1.16	1.32
1	A	737	GLN	CD-NE2	-6.10	1.17	1.32
1	A	737	GLN	CD-OE1	-5.51	1.11	1.24
1	C	840	GLU	CB-CG	-5.21	1.42	1.52
1	C	737	GLN	CD-OE1	-5.13	1.12	1.24

There are no bond angle outliers.

There are no chirality outliers.

All (5) planarity outliers are listed below:

Mol	Chain	Res	Type	Group
2	B	15	PHE	Peptide
2	B	165	GLU	Peptide
2	B	222	GLU	Peptide
2	D	165	GLU	Peptide
2	D	222	GLU	Peptide

5.2 Too-close contacts

In the following table, the Non-H and H(model) columns list the number of non-hydrogen atoms and hydrogen atoms in the chain respectively. The H(added) column lists the number of hydrogen atoms added and optimized by MolProbity. The Clashes column lists the number of clashes within the asymmetric unit, whereas Symm-Clashes lists symmetry related clashes.

Mol	Chain	Non-H	H(model)	H(added)	Clashes	Symm-Clashes
1	A	7730	0	7776	188	0
1	C	7730	0	7776	180	0
2	B	2377	0	2349	77	0
2	D	2357	0	2326	74	0
3	E	255	0	259	5	0
3	G	255	0	259	4	0
4	A	3	0	0	0	0
4	C	3	0	0	0	0
5	A	28	0	46	4	0
5	C	56	0	92	7	0
5	G	28	0	46	5	0
6	A	46	0	44	16	0
7	A	55	0	64	2	0
7	C	55	0	64	2	0
8	A	31	0	18	5	0
8	B	24	0	20	2	0
9	B	28	0	25	0	0
10	B	14	0	13	0	0
10	D	42	0	39	1	0
11	A	3	0	0	0	0
11	C	3	0	0	0	0
All	All	21123	0	21216	524	0

The all-atom clashscore is defined as the number of clashes found per 1000 atoms (including hydrogen atoms). The all-atom clashscore for this structure is 12.

All (524) close contacts within the same asymmetric unit are listed below, sorted by their clash magnitude.

Atom-1	Atom-2	Interatomic distance (Å)	Clash overlap (Å)
2:D:170:LYS:HB2	2:D:174:PRO:HA	1.57	0.86
2:B:170:LYS:HB2	2:B:174:PRO:HA	1.57	0.86
1:C:488:ASN:ND2	1:C:493:GLU:O	2.09	0.86
1:A:488:ASN:ND2	1:A:493:GLU:O	2.09	0.84
1:A:977:LYS:HB3	6:A:1105:SUC:H62	1.60	0.82
2:B:113:LYS:HA	2:B:153:LEU:HD11	1.65	0.78
1:A:978:PRO:HB3	5:G:1001:CLR:H192	1.66	0.78
1:C:604:ILE:HD11	1:C:755:VAL:HG21	1.65	0.78
1:A:864:VAL:HG22	2:B:57:MET:HG3	1.66	0.78
1:A:659:HIS:HB3	1:A:685:ARG:HH22	1.49	0.77
1:C:864:VAL:HG22	2:D:57:MET:HG3	1.65	0.77
2:D:113:LYS:HA	2:D:153:LEU:HD11	1.66	0.76
1:C:659:HIS:HB3	1:C:685:ARG:HH22	1.48	0.76
1:C:195:ASP:HB2	1:C:253:TYR:HB2	1.68	0.74
1:A:195:ASP:HB2	1:A:253:TYR:HB2	1.68	0.74
1:A:385:TRP:HB3	1:A:581:LEU:H	1.53	0.73
1:C:385:TRP:HB3	1:C:581:LEU:H	1.53	0.71
2:D:216:LYS:HB2	2:D:221:LYS:HG2	1.73	0.70
1:A:375:THR:HA	1:A:588:PRO:HA	1.74	0.70
2:B:80:ILE:HD11	2:B:177:ILE:HD12	1.73	0.70
1:A:565:ASP:O	1:A:570:ASN:ND2	2.25	0.70
2:B:216:LYS:HB2	2:B:221:LYS:HG2	1.73	0.70
1:A:979:THR:H	6:A:1105:SUC:H61	1.56	0.69
1:C:565:ASP:O	1:C:570:ASN:ND2	2.25	0.69
1:C:22:GLU:HA	1:C:25:MET:HG3	1.75	0.69
2:D:80:ILE:HD11	2:D:177:ILE:HD12	1.73	0.69
1:C:111:GLN:HB3	1:C:116:GLU:HG2	1.75	0.68
1:A:22:GLU:HA	1:A:25:MET:HG3	1.75	0.68
2:B:29:GLY:HA2	2:B:32:TRP:CD1	2.30	0.67
2:D:238:PHE:HD1	2:D:257:PRO:HB2	1.60	0.67
1:A:111:GLN:HB3	1:A:116:GLU:HG2	1.75	0.67
1:A:493:GLU:OE1	1:A:495:ARG:NH2	2.29	0.66
2:D:29:GLY:HA2	2:D:32:TRP:CD1	2.30	0.66
2:B:238:PHE:HD1	2:B:257:PRO:HB2	1.60	0.66
1:C:493:GLU:OE1	1:C:495:ARG:NH2	2.28	0.65
1:A:865:ILE:HD12	1:A:914:PRO:HG3	1.78	0.65
1:C:865:ILE:HD12	1:C:914:PRO:HG3	1.78	0.65
2:D:160:SER:HB2	2:D:169:TYR:HE1	1.62	0.65
1:C:430:GLN:HG3	1:C:433:LEU:HD12	1.79	0.64
1:A:611:GLY:HA2	1:A:686:THR:H	1.63	0.64
1:C:267:ALA:O	1:C:719:LYS:NZ	2.31	0.63
1:C:611:GLY:HA2	1:C:686:THR:H	1.63	0.63

Continued on next page...

Continued from previous page...

Atom-1	Atom-2	Interatomic distance (Å)	Clash overlap (Å)
1:C:117:GLU:HG3	1:C:118:PRO:HD3	1.81	0.63
6:A:1106:SUC:C1'	1:C:978:PRO:HB2	2.28	0.63
1:C:880:ARG:HA	1:C:883:TRP:HB3	1.80	0.63
2:B:160:SER:HB2	2:B:169:TYR:CE1	2.34	0.63
2:B:160:SER:HB2	2:B:169:TYR:HE1	1.62	0.63
1:A:430:GLN:HG3	1:A:433:LEU:HD12	1.79	0.63
2:D:160:SER:HB2	2:D:169:TYR:CE1	2.34	0.63
1:A:979:THR:HG22	5:A:1104:CLR:H41	1.81	0.62
1:C:200:SER:HA	1:C:222:PRO:HG3	1.81	0.62
2:D:189:LYS:H	2:D:282:ASN:HB2	1.64	0.62
1:A:880:ARG:HA	1:A:883:TRP:HB3	1.80	0.62
2:D:165:GLU:HB3	2:D:166:THR:HA	1.81	0.62
6:A:1105:SUC:H4'	1:C:941:GLY:HA3	1.80	0.62
1:C:931:LYS:NZ	1:C:941:GLY:O	2.32	0.62
2:B:189:LYS:H	2:B:282:ASN:HB2	1.65	0.62
1:C:589:ARG:HB2	1:C:592:VAL:HG23	1.82	0.62
2:B:158:ASN:O	2:B:166:THR:OG1	2.17	0.61
1:A:117:GLU:HG3	1:A:118:PRO:HD3	1.82	0.61
2:D:158:ASN:O	2:D:166:THR:OG1	2.18	0.61
1:C:868:GLU:OE1	5:C:2004:CLR:O1	2.17	0.61
1:A:907:VAL:HA	1:A:910:THR:HG22	1.82	0.61
2:B:165:GLU:HB3	2:B:166:THR:HA	1.81	0.61
1:A:1010:VAL:O	1:A:1014:THR:OG1	2.14	0.61
2:D:79:GLN:HB3	2:D:295:PHE:CZ	2.36	0.61
1:A:208:ASN:HB3	1:A:212:THR:HG22	1.83	0.61
2:D:148:VAL:HG11	2:D:254:TYR:HA	1.81	0.61
1:C:29:LYS:HE2	1:C:265:THR:HB	1.83	0.61
2:B:148:VAL:HG11	2:B:254:TYR:HA	1.82	0.61
1:A:205:LYS:HG2	1:A:219:THR:HG22	1.82	0.60
1:C:907:VAL:HA	1:C:910:THR:HG22	1.83	0.60
1:A:29:LYS:HE2	1:A:265:THR:HB	1.83	0.60
1:A:931:LYS:NZ	1:A:941:GLY:O	2.32	0.60
1:C:807:THR:HG22	1:C:957:LEU:HD23	1.83	0.60
1:A:200:SER:HA	1:A:222:PRO:HG3	1.81	0.60
2:B:79:GLN:HB3	2:B:295:PHE:CZ	2.36	0.60
1:C:979:THR:HG22	5:C:2004:CLR:H41	1.82	0.60
1:A:807:THR:HG22	1:A:957:LEU:HD23	1.84	0.60
1:C:205:LYS:HG2	1:C:219:THR:HG22	1.83	0.60
2:D:265:ASN:HD22	10:D:2003:NAG:H83	1.67	0.60
1:A:811:PRO:HB3	1:A:927:LEU:HD22	1.83	0.59
1:A:529:ASP:HA	1:A:532:GLN:HB2	1.84	0.59

Continued on next page...

Continued from previous page...

Atom-1	Atom-2	Interatomic distance (Å)	Clash overlap (Å)
1:C:111:GLN:OE1	1:C:122:ASN:ND2	2.36	0.59
1:A:931:LYS:HE2	1:A:947:LEU:HD13	1.85	0.59
1:C:208:ASN:HB3	1:C:212:THR:HG22	1.83	0.59
1:C:529:ASP:HA	1:C:532:GLN:HB2	1.84	0.59
2:D:130:PRO:HB2	2:D:204:TYR:CE1	2.38	0.58
1:A:180:VAL:HG23	1:A:254:THR:HG22	1.85	0.58
1:C:624:VAL:HG23	1:C:626:ILE:HG13	1.86	0.58
1:C:811:PRO:HB3	1:C:927:LEU:HD22	1.83	0.58
2:B:130:PRO:HB2	2:B:204:TYR:CE1	2.39	0.58
2:B:79:GLN:HE21	2:B:82:GLN:HA	1.68	0.58
1:A:551:LEU:HD22	1:A:576:LEU:HD23	1.85	0.58
1:C:180:VAL:HG23	1:C:254:THR:HG22	1.85	0.58
1:C:901:TYR:HA	1:C:904:ARG:HE	1.69	0.58
1:C:116:GLU:HG3	1:C:118:PRO:HD2	1.85	0.58
1:C:118:PRO:HB3	1:C:122:ASN:HB2	1.85	0.57
1:C:592:VAL:HG22	1:C:748:PHE:HD2	1.69	0.57
1:C:807:THR:HB	1:C:954:GLU:HG3	1.86	0.57
1:C:37:HIS:HB3	1:C:235:ILE:HD11	1.86	0.57
2:D:88:ILE:HB	2:D:299:ILE:HG22	1.86	0.57
2:D:79:GLN:HE21	2:D:82:GLN:HA	1.67	0.57
1:A:807:THR:HB	1:A:954:GLU:HG3	1.86	0.57
1:A:589:ARG:HB2	1:A:592:VAL:HG23	1.86	0.57
2:B:25:LEU:H	2:B:29:GLY:HA3	1.70	0.57
1:A:901:TYR:HA	1:A:904:ARG:HE	1.69	0.57
1:A:118:PRO:HB3	1:A:122:ASN:HB2	1.85	0.57
3:G:45:ILE:HD12	3:G:46:LEU:HG	1.87	0.57
2:B:88:ILE:HB	2:B:299:ILE:HG22	1.86	0.57
1:A:116:GLU:HG3	1:A:118:PRO:HD2	1.86	0.57
1:C:799:THR:HG21	1:C:912:HIS:HB3	1.87	0.57
1:A:111:GLN:OE1	1:A:122:ASN:ND2	2.37	0.57
1:C:986:PRO:HG3	5:C:2004:CLR:H181	1.85	0.56
2:B:119:ASP:O	2:B:123:PHE:HB2	2.06	0.56
1:C:931:LYS:HE2	1:C:947:LEU:HD13	1.86	0.56
1:A:624:VAL:HG23	1:A:626:ILE:HG13	1.86	0.56
2:D:73:ALA:O	2:D:75:PRO:HD3	2.06	0.56
1:C:551:LEU:HD22	1:C:576:LEU:HD23	1.86	0.56
2:B:101:TYR:O	2:B:105:ILE:HG13	2.06	0.56
1:A:604:ILE:HD11	1:A:755:VAL:HG21	1.87	0.56
2:D:101:TYR:O	2:D:105:ILE:HG13	2.06	0.56
1:A:661:SER:HB3	1:A:685:ARG:HH21	1.71	0.55
2:B:16:ILE:C	2:B:18:ASN:H	2.09	0.55

Continued on next page...

Continued from previous page...

Atom-1	Atom-2	Interatomic distance (Å)	Clash overlap (Å)
1:C:978:PRO:HB3	5:C:2006:CLR:H192	1.87	0.55
1:A:799:THR:HG21	1:A:912:HIS:HB3	1.87	0.55
1:A:37:HIS:HB3	1:A:235:ILE:HD11	1.88	0.55
2:B:73:ALA:O	2:B:75:PRO:HD3	2.06	0.55
1:A:888:ILE:O	1:A:904:ARG:NH2	2.40	0.55
2:B:16:ILE:O	2:B:18:ASN:N	2.40	0.55
1:C:1010:VAL:O	1:C:1014:THR:OG1	2.15	0.55
1:A:512:SER:HB3	1:A:575:ASN:HA	1.89	0.55
1:C:998:ARG:HE	1:C:1014:THR:HB	1.72	0.54
1:A:977:LYS:HB3	6:A:1105:SUC:C6	2.33	0.54
1:C:551:LEU:HD13	1:C:576:LEU:HA	1.90	0.54
2:D:166:THR:HG21	2:D:170:LYS:H	1.72	0.54
2:D:204:TYR:C	2:D:206:PRO:HD2	2.28	0.54
1:C:888:ILE:O	1:C:904:ARG:NH2	2.41	0.54
2:D:133:LEU:HG	2:D:240:LEU:HB3	1.88	0.54
1:C:661:SER:HB3	1:C:685:ARG:HH21	1.71	0.54
2:D:119:ASP:O	2:D:123:PHE:HB2	2.07	0.54
2:B:133:LEU:HG	2:B:240:LEU:HB3	1.89	0.54
1:C:890:ASP:OD1	2:D:82:GLN:NE2	2.41	0.54
1:A:998:ARG:HE	1:A:1014:THR:HB	1.72	0.54
1:C:301:ILE:O	1:C:305:ILE:HG12	2.08	0.54
3:E:45:ILE:HD12	3:E:46:LEU:HG	1.88	0.54
2:D:73:ALA:HB3	2:D:74:PRO:HD3	1.90	0.53
2:D:25:LEU:H	2:D:29:GLY:HA3	1.72	0.53
1:C:632:GLU:OE1	1:C:640:ARG:NH1	2.42	0.53
1:C:591:ALA:HB1	1:C:749:ALA:HB2	1.91	0.53
1:C:725:VAL:HG11	1:C:751:ILE:HD11	1.90	0.53
1:A:301:ILE:O	1:A:305:ILE:HG12	2.08	0.53
2:B:204:TYR:C	2:B:206:PRO:HD2	2.28	0.53
2:B:92:PRO:HG3	2:B:301:VAL:HG12	1.91	0.53
2:B:166:THR:HG21	2:B:170:LYS:H	1.73	0.53
2:B:80:ILE:HG21	2:B:105:ILE:HA	1.91	0.53
1:C:890:ASP:OD1	1:C:890:ASP:N	2.42	0.53
1:A:551:LEU:HD13	1:A:576:LEU:HA	1.90	0.53
2:B:73:ALA:HB3	2:B:74:PRO:HD3	1.91	0.53
1:A:632:GLU:OE1	1:A:640:ARG:NH1	2.42	0.52
1:A:661:SER:H	1:A:685:ARG:HH21	1.57	0.52
1:A:547:GLY:HA2	1:A:581:LEU:HD23	1.92	0.52
1:A:890:ASP:N	1:A:890:ASP:OD1	2.42	0.52
2:B:231:GLY:HA3	2:B:235:TYR:O	2.09	0.52
1:C:512:SER:HB3	1:C:575:ASN:HA	1.89	0.52

Continued on next page...

Continued from previous page...

Atom-1	Atom-2	Interatomic distance (Å)	Clash overlap (Å)
1:C:443:ASP:OD1	1:C:444:ALA:N	2.41	0.52
1:A:840:GLU:HG3	8:A:1108:17F:HN1	1.75	0.52
1:C:385:TRP:HE3	1:C:580:GLY:HA2	1.75	0.52
2:D:166:THR:HB	2:D:169:TYR:H	1.74	0.52
1:C:661:SER:H	1:C:685:ARG:HH21	1.58	0.52
2:D:80:ILE:HG21	2:D:105:ILE:HA	1.91	0.52
1:C:68:ASP:OD1	1:C:69:GLY:N	2.33	0.52
1:C:206:VAL:HA	1:C:242:CYS:HA	1.92	0.52
2:B:166:THR:HB	2:B:169:TYR:H	1.74	0.52
2:B:217:ARG:NH1	2:B:218:ASP:OD2	2.43	0.52
1:A:148:SER:O	1:A:152:GLU:HG2	2.10	0.52
2:D:16:ILE:C	2:D:18:ASN:H	2.13	0.52
8:A:1108:17F:H5	8:A:1109:17F:H5	1.90	0.51
2:D:217:ARG:NH1	2:D:218:ASP:OD2	2.43	0.51
1:A:136:THR:HG21	1:A:330:LEU:HG	1.92	0.51
1:C:729:ILE:HG13	1:C:730:ALA:H	1.75	0.51
1:A:68:ASP:OD1	1:A:69:GLY:N	2.33	0.51
2:D:231:GLY:HA3	2:D:235:TYR:O	2.09	0.51
1:A:385:TRP:HE3	1:A:580:GLY:HA2	1.75	0.51
2:D:92:PRO:HG3	2:D:301:VAL:HG12	1.91	0.51
1:A:308:TYR:HB3	1:A:312:GLU:HB2	1.92	0.51
1:C:818:GLU:OE2	1:C:931:LYS:NZ	2.43	0.51
1:C:420:LEU:HB3	1:C:486:HIS:HE1	1.76	0.51
1:A:979:THR:OG1	6:A:1105:SUC:H5	2.11	0.51
1:A:890:ASP:OD1	2:B:82:GLN:NE2	2.44	0.51
1:C:136:THR:HG21	1:C:330:LEU:HG	1.93	0.51
1:C:435:ILE:HD12	1:C:455:LEU:HD12	1.92	0.51
1:C:768:SER:HA	1:C:815:LEU:HD23	1.93	0.51
1:C:291:VAL:HG21	1:C:847:TYR:HE2	1.76	0.51
2:D:170:LYS:HB2	2:D:174:PRO:CA	2.36	0.51
1:C:375:THR:HA	1:C:588:PRO:HA	1.92	0.51
1:C:1002:ILE:HD13	1:C:1015:TYR:HB2	1.93	0.51
1:C:90:PHE:O	1:C:94:SER:HB2	2.11	0.51
1:A:435:ILE:HD12	1:A:455:LEU:HD12	1.91	0.51
1:A:206:VAL:HA	1:A:242:CYS:HA	1.92	0.51
1:C:683:PHE:HB3	1:C:686:THR:HG21	1.93	0.51
1:A:1002:ILE:HD13	1:A:1015:TYR:HB2	1.93	0.51
1:A:99:ILE:HG13	1:A:100:GLY:N	2.26	0.51
1:C:547:GLY:HA2	1:C:581:LEU:HD23	1.92	0.50
1:A:93:PHE:HE1	1:A:284:PHE:HE2	1.59	0.50
1:A:729:ILE:HG13	1:A:730:ALA:H	1.74	0.50

Continued on next page...

Continued from previous page...

Atom-1	Atom-2	Interatomic distance (Å)	Clash overlap (Å)
1:A:420:LEU:HB3	1:A:486:HIS:HE1	1.75	0.50
1:A:90:PHE:O	1:A:94:SER:HB2	2.12	0.50
1:A:936:SER:OG	1:A:996:GLU:OE2	2.24	0.50
1:A:275:THR:OG1	1:A:355:GLU:OE2	2.27	0.50
1:A:689:GLN:O	1:A:693:ILE:HG12	2.11	0.50
1:A:840:GLU:HB3	8:B:1004:17F:C3	2.41	0.50
1:A:443:ASP:OD1	1:A:444:ALA:N	2.42	0.50
1:A:768:SER:HA	1:A:815:LEU:HD23	1.93	0.50
1:A:238:PHE:HD2	1:A:260:MET:HG2	1.77	0.50
1:C:25:MET:O	1:C:29:LYS:HG3	2.12	0.50
1:C:689:GLN:O	1:C:693:ILE:HG12	2.11	0.50
1:C:909:PHE:CG	1:C:972:ARG:HG3	2.47	0.50
1:C:99:ILE:HG13	1:C:100:GLY:N	2.27	0.50
2:D:153:LEU:H	2:D:153:LEU:HD12	1.77	0.50
6:A:1106:SUC:O2	1:C:978:PRO:HD2	2.12	0.50
1:A:462:GLU:HA	1:A:465:GLU:HG2	1.93	0.50
1:C:116:GLU:HG3	1:C:118:PRO:CD	2.42	0.50
1:A:25:MET:O	1:A:29:LYS:HG3	2.11	0.50
1:C:238:PHE:HD2	1:C:260:MET:HG2	1.76	0.50
1:A:909:PHE:CG	1:A:972:ARG:HG3	2.47	0.50
1:C:469:LYS:HA	1:C:486:HIS:HD2	1.77	0.50
1:C:308:TYR:HB3	1:C:312:GLU:HB2	1.92	0.50
1:C:462:GLU:HA	1:C:465:GLU:HG2	1.94	0.50
1:C:237:PHE:O	1:C:240:THR:OG1	2.25	0.50
1:A:291:VAL:HG21	1:A:847:TYR:HE2	1.76	0.50
1:C:660:GLY:HA2	1:C:663:LEU:HD12	1.94	0.50
1:C:790:ASN:OD1	1:C:880:ARG:NH1	2.41	0.49
1:C:979:THR:CG2	5:C:2004:CLR:H41	2.42	0.49
2:B:153:LEU:H	2:B:153:LEU:HD12	1.77	0.49
1:A:986:PRO:HG3	5:A:1104:CLR:H181	1.94	0.49
1:A:551:LEU:HG	1:A:552:PHE:O	2.12	0.49
1:C:343:ARG:NH2	1:C:757:GLU:OE1	2.45	0.49
1:C:211:LEU:O	1:C:713:ASN:HB3	2.12	0.49
1:C:41:LEU:HD12	1:C:41:LEU:H	1.77	0.49
1:A:181:GLY:HA2	1:A:250:ILE:HG23	1.95	0.49
1:A:979:THR:HB	6:A:1105:SUC:O6	2.12	0.49
1:C:181:GLY:HA2	1:C:250:ILE:HG23	1.94	0.49
1:A:106:LEU:O	1:A:110:ILE:HG12	2.12	0.49
1:A:343:ARG:NH2	1:A:757:GLU:OE1	2.45	0.49
1:C:836:LYS:HB2	1:C:839:ASN:HB3	1.94	0.49
2:B:170:LYS:HB2	2:B:174:PRO:CA	2.36	0.49

Continued on next page...

Continued from previous page...

Atom-1	Atom-2	Interatomic distance (Å)	Clash overlap (Å)
1:A:469:LYS:HA	1:A:486:HIS:HD2	1.77	0.49
1:A:41:LEU:H	1:A:41:LEU:HD12	1.77	0.49
1:A:924:TRP:CH2	5:G:1001:CLR:H231	2.48	0.49
1:C:93:PHE:HE1	1:C:284:PHE:HE2	1.59	0.49
1:A:898:GLN:HE22	2:B:179:LYS:HE3	1.78	0.49
1:A:915:PHE:O	1:A:919:ILE:HG12	2.12	0.49
1:A:116:GLU:HG3	1:A:118:PRO:CD	2.42	0.49
1:C:915:PHE:O	1:C:919:ILE:HG12	2.13	0.49
2:D:21:LYS:HA	2:D:21:LYS:HD2	1.55	0.49
1:A:683:PHE:HB3	1:A:686:THR:HG21	1.94	0.48
2:B:79:GLN:N	2:B:79:GLN:OE1	2.45	0.48
1:C:106:LEU:O	1:C:110:ILE:HG12	2.13	0.48
1:A:1001:ILE:HG22	1:A:1010:VAL:HG21	1.95	0.48
1:C:148:SER:O	1:C:152:GLU:HG2	2.12	0.48
1:A:872:LEU:HD23	1:A:894:SER:HB2	1.95	0.48
1:C:551:LEU:HG	1:C:552:PHE:O	2.12	0.48
1:A:1000:LEU:HD23	1:A:1003:ARG:NH2	2.29	0.48
1:A:783:PHE:CE1	7:A:1107:DGX:H2	2.49	0.48
1:C:872:LEU:HD23	1:C:894:SER:HB2	1.96	0.48
1:A:995:ASP:OD1	1:A:998:ARG:NH1	2.47	0.48
2:D:79:GLN:N	2:D:79:GLN:OE1	2.46	0.48
1:C:98:TRP:CE2	1:C:133:VAL:HG11	2.48	0.48
3:E:39:ILE:O	3:E:43:ILE:HG12	2.14	0.48
6:A:1106:SUC:O1'	1:C:978:PRO:HB2	2.14	0.48
1:C:467:TYR:CZ	1:C:489:PRO:HG3	2.49	0.48
1:A:790:ASN:OD1	1:A:880:ARG:NH1	2.42	0.48
1:A:467:TYR:CZ	1:A:489:PRO:HG3	2.49	0.48
1:C:1001:ILE:HG22	1:C:1010:VAL:HG21	1.95	0.47
1:A:978:PRO:HB2	6:A:1105:SUC:H1'2	1.96	0.47
2:B:24:PHE:HB3	2:B:28:THR:HA	1.97	0.47
8:A:1108:17F:C5	8:A:1109:17F:H5	2.44	0.47
1:C:1000:LEU:HD23	1:C:1003:ARG:NH2	2.29	0.47
1:A:660:GLY:HA2	1:A:663:LEU:HD12	1.95	0.47
1:A:129:LEU:O	1:A:133:VAL:HG23	2.14	0.47
1:A:237:PHE:O	1:A:240:THR:OG1	2.24	0.47
5:C:2004:CLR:H211	5:C:2004:CLR:H231	1.62	0.47
1:A:963:TYR:CE2	5:G:1001:CLR:H6	2.50	0.47
1:C:212:THR:HG23	1:C:214:GLU:H	1.80	0.47
2:B:21:LYS:O	2:B:23:GLU:HA	2.14	0.47
1:A:979:THR:H	6:A:1105:SUC:C6	2.27	0.47
3:G:39:ILE:O	3:G:43:ILE:HG12	2.14	0.47

Continued on next page...

Continued from previous page...

Atom-1	Atom-2	Interatomic distance (Å)	Clash overlap (Å)
1:C:858:GLY:HA2	1:C:918:THR:HG21	1.96	0.47
1:A:212:THR:HG23	1:A:214:GLU:H	1.79	0.47
2:D:21:LYS:O	2:D:23:GLU:HA	2.14	0.47
1:A:98:TRP:CE2	1:A:133:VAL:HG11	2.49	0.47
2:D:51:ILE:O	2:D:54:ILE:HG22	2.14	0.47
1:A:661:SER:H	1:A:685:ARG:NH2	2.12	0.47
1:C:995:ASP:OD1	1:C:998:ARG:NH1	2.48	0.47
1:C:661:SER:H	1:C:685:ARG:NH2	2.13	0.47
2:D:24:PHE:HB3	2:D:28:THR:HA	1.96	0.47
2:B:166:THR:N	2:B:167:TYR:HA	2.30	0.47
2:B:51:ILE:O	2:B:54:ILE:HG22	2.15	0.47
1:A:858:GLY:HA2	1:A:918:THR:HG21	1.96	0.46
2:D:22:LYS:HA	2:D:23:GLU:HA	1.62	0.46
1:A:977:LYS:HB2	1:A:980:TRP:NE1	2.31	0.46
1:C:129:LEU:O	1:C:133:VAL:HG23	2.15	0.46
2:D:94:ASP:HB3	2:D:97:SER:HB2	1.98	0.46
1:C:462:GLU:O	1:C:466:ARG:HB2	2.16	0.46
1:C:107:ALA:HB2	1:C:318:ILE:HG21	1.98	0.46
1:C:424:ALA:O	1:C:464:ARG:NH2	2.48	0.46
1:A:836:LYS:HB2	1:A:839:ASN:HB3	1.96	0.46
1:A:979:THR:CG2	5:A:1104:CLR:H41	2.45	0.46
1:C:324:ASN:HA	1:C:780:ILE:HD11	1.97	0.46
1:A:422:ASN:HB3	1:A:424:ALA:H	1.81	0.46
1:A:868:GLU:OE2	2:B:68:TYR:HE2	1.99	0.46
1:C:795:LEU:HD13	1:C:915:PHE:HB3	1.97	0.46
1:A:963:TYR:O	3:G:27:ARG:HG3	2.15	0.46
1:C:93:PHE:CE2	1:C:330:LEU:HB2	2.51	0.46
2:D:166:THR:N	2:D:167:TYR:HA	2.30	0.45
1:A:462:GLU:O	1:A:466:ARG:HB2	2.16	0.45
2:D:230:PHE:HB2	2:D:260:ALA:HB3	1.97	0.45
2:B:94:ASP:HB3	2:B:97:SER:HB2	1.98	0.45
1:C:420:LEU:HB3	1:C:486:HIS:CE1	2.51	0.45
1:A:729:ILE:HG13	1:A:730:ALA:N	2.31	0.45
1:A:424:ALA:O	1:A:464:ARG:NH2	2.49	0.45
1:C:963:TYR:O	3:E:27:ARG:HG3	2.16	0.45
1:C:936:SER:OG	1:C:996:GLU:OE2	2.23	0.45
1:A:886:ARG:HA	1:A:901:TYR:CD1	2.52	0.45
1:C:729:ILE:HG13	1:C:730:ALA:N	2.31	0.45
1:C:469:LYS:HA	1:C:486:HIS:CD2	2.52	0.45
1:A:420:LEU:HB3	1:A:486:HIS:CE1	2.51	0.45
2:B:21:LYS:HA	2:B:21:LYS:HD2	1.56	0.45

Continued on next page...

Continued from previous page...

Atom-1	Atom-2	Interatomic distance (Å)	Clash overlap (Å)
1:A:191:ARG:HE	1:A:239:SER:HA	1.82	0.45
1:C:852:MET:HG2	2:D:43:TYR:CE2	2.52	0.45
1:C:662:ASP:O	1:C:666:MET:HG3	2.16	0.45
2:B:168:GLY:HA3	2:B:171:ASP:HB2	1.99	0.45
1:C:422:ASN:HB3	1:C:424:ALA:H	1.80	0.45
1:A:325:VAL:HA	1:A:326:PRO:HD3	1.72	0.45
1:A:941:GLY:HA3	6:A:1106:SUC:H6'1	1.97	0.45
1:C:929:ILE:HB	1:C:995:ASP:OD2	2.17	0.45
1:C:886:ARG:HA	1:C:901:TYR:CD1	2.52	0.45
2:D:162:LEU:HB3	2:D:163:ASN:H	1.51	0.45
3:E:45:ILE:HG13	3:E:45:ILE:H	1.54	0.45
1:A:972:ARG:HA	1:A:972:ARG:HD3	1.62	0.45
1:A:852:MET:HG2	2:B:43:TYR:CE2	2.52	0.45
1:C:594:ASP:O	1:C:598:LYS:HG2	2.17	0.45
2:B:15:PHE:HB2	2:B:16:ILE:HG12	1.98	0.45
1:C:467:TYR:HB3	1:C:486:HIS:HB3	1.99	0.45
1:A:662:ASP:O	1:A:666:MET:HG3	2.16	0.45
2:B:230:PHE:HB2	2:B:260:ALA:HB3	1.98	0.44
1:C:845:MET:HA	1:C:849:GLN:HE21	1.82	0.44
2:D:79:GLN:HB3	2:D:295:PHE:CE1	2.52	0.44
2:B:79:GLN:HB3	2:B:295:PHE:CE1	2.52	0.44
8:B:1004:17F:H4A	8:B:1004:17F:H1	1.99	0.44
1:A:93:PHE:CE2	1:A:330:LEU:HB2	2.52	0.44
2:B:21:LYS:HG3	2:B:22:LYS:H	1.82	0.44
1:C:80:PRO:HB2	1:C:84:LYS:HD3	1.99	0.44
1:C:191:ARG:HE	1:C:239:SER:HA	1.81	0.44
1:A:107:ALA:HB2	1:A:318:ILE:HG21	1.98	0.44
1:A:929:ILE:HB	1:A:995:ASP:OD2	2.17	0.44
1:A:324:ASN:HA	1:A:780:ILE:HD11	1.98	0.44
1:A:118:PRO:HA	1:A:121:ASP:CB	2.46	0.44
1:C:891:VAL:HG21	1:C:904:ARG:NH1	2.33	0.44
8:A:1108:17F:H2	2:B:27:ARG:NH2	2.32	0.44
2:D:80:ILE:HG13	2:D:177:ILE:HB	2.00	0.44
1:A:801:LEU:HD23	1:A:801:LEU:HA	1.82	0.44
1:C:118:PRO:HA	1:C:121:ASP:CB	2.47	0.44
1:A:469:LYS:HA	1:A:486:HIS:CD2	2.52	0.44
2:D:168:GLY:HA3	2:D:171:ASP:HB2	1.99	0.44
1:C:944:ASN:O	1:C:948:ILE:HG12	2.17	0.44
1:C:913:THR:N	1:C:914:PRO:HD2	2.33	0.44
6:A:1106:SUC:HO3	2:D:68:TYR:HH	1.64	0.44
1:A:467:TYR:HB3	1:A:486:HIS:HB3	1.99	0.44

Continued on next page...

Continued from previous page...

Atom-1	Atom-2	Interatomic distance (Å)	Clash overlap (Å)
1:A:845:MET:HA	1:A:849:GLN:HE21	1.83	0.44
1:C:633:THR:HA	1:C:655:ALA:O	2.18	0.44
1:A:868:GLU:OE1	5:A:1104:CLR:O1	2.25	0.43
2:B:80:ILE:HG13	2:B:177:ILE:HB	2.00	0.43
2:D:47:ALA:O	2:D:51:ILE:HG13	2.17	0.43
2:B:91:ARG:HD2	2:B:94:ASP:H	1.83	0.43
2:D:89:SER:HA	2:D:300:GLU:O	2.18	0.43
1:C:667:THR:N	1:C:670:GLN:OE1	2.44	0.43
1:A:795:LEU:HD13	1:A:915:PHE:HB3	1.98	0.43
2:D:76:GLY:HA2	2:D:293:GLY:H	1.83	0.43
2:B:216:LYS:H	2:B:221:LYS:HD2	1.83	0.43
2:B:89:SER:HA	2:B:300:GLU:O	2.18	0.43
2:D:79:GLN:HB3	2:D:295:PHE:HZ	1.82	0.43
2:D:91:ARG:HD2	2:D:94:ASP:H	1.83	0.43
2:D:216:LYS:H	2:D:221:LYS:HD2	1.83	0.43
2:D:239:PRO:HB3	2:D:241:GLN:HE21	1.84	0.43
1:A:880:ARG:HG3	1:A:881:VAL:N	2.34	0.43
1:A:323:ALA:HB1	1:A:780:ILE:HG12	2.01	0.43
1:A:594:ASP:O	1:A:598:LYS:HG2	2.18	0.43
1:A:944:ASN:O	1:A:948:ILE:HG12	2.17	0.43
1:A:866:LEU:HA	1:A:866:LEU:HD23	1.76	0.43
1:C:473:ILE:HD12	1:C:483:LEU:HD21	2.01	0.43
1:A:413:ALA:O	1:A:417:ILE:HG13	2.19	0.43
1:A:185:GLU:HB2	1:A:248:ARG:HD3	2.01	0.43
2:D:174:PRO:O	2:D:263:PHE:N	2.48	0.43
6:A:1105:SUC:H1	6:A:1105:SUC:H1'1	1.77	0.43
1:A:860:PHE:O	1:A:864:VAL:HG23	2.19	0.43
2:D:187:LYS:O	2:D:282:ASN:ND2	2.52	0.43
1:A:891:VAL:HG21	1:A:904:ARG:NH1	2.34	0.43
1:C:559:PRO:HG2	1:C:562:PHE:HB2	2.00	0.43
1:A:76:PRO:HA	1:A:77:PRO:HD3	1.84	0.43
1:A:633:THR:HA	1:A:655:ALA:O	2.19	0.43
1:A:559:PRO:HG2	1:A:562:PHE:HB2	2.00	0.43
2:D:157:GLY:C	2:D:159:CYS:H	2.22	0.43
1:C:217:PRO:HB3	1:C:243:VAL:HG21	2.01	0.43
6:A:1105:SUC:O3'	1:C:943:LYS:HE3	2.19	0.43
1:C:860:PHE:O	1:C:864:VAL:HG23	2.19	0.43
1:C:323:ALA:HB1	1:C:780:ILE:HG12	2.00	0.43
1:A:849:GLN:OE1	1:A:994:TYR:OH	2.37	0.43
1:A:525:GLU:HA	1:A:528:LYS:HB3	2.01	0.43
1:C:413:ALA:O	1:C:417:ILE:HG13	2.19	0.43

Continued on next page...

Continued from previous page...

Atom-1	Atom-2	Interatomic distance (Å)	Clash overlap (Å)
1:A:225:THR:HG21	1:A:233:ARG:HD2	2.01	0.43
1:A:913:THR:N	1:A:914:PRO:HD2	2.34	0.42
1:C:611:GLY:HA2	1:C:686:THR:N	2.33	0.42
1:C:592:VAL:HG22	1:C:748:PHE:CD2	2.51	0.42
1:A:620:ILE:HD13	1:A:620:ILE:HA	1.94	0.42
1:C:192:ILE:HA	1:C:193:PRO:HD3	1.69	0.42
1:C:185:GLU:HB2	1:C:248:ARG:HD3	2.01	0.42
1:C:182:ASP:N	1:C:182:ASP:OD1	2.52	0.42
1:C:880:ARG:HG3	1:C:881:VAL:N	2.33	0.42
2:D:21:LYS:HG3	2:D:22:LYS:H	1.84	0.42
1:A:608:MET:HE1	1:A:620:ILE:HG22	2.01	0.42
1:C:608:MET:HB3	1:C:682:VAL:HG22	2.01	0.42
1:A:217:PRO:HB3	1:A:243:VAL:HG21	2.01	0.42
1:A:667:THR:N	1:A:670:GLN:OE1	2.44	0.42
2:B:174:PRO:O	2:B:263:PHE:N	2.47	0.42
6:A:1105:SUC:H4	2:B:68:TYR:OH	2.19	0.42
2:B:47:ALA:O	2:B:51:ILE:HG13	2.18	0.42
1:A:810:VAL:HB	1:A:811:PRO:HD3	2.02	0.42
2:B:22:LYS:HA	2:B:23:GLU:HA	1.62	0.42
1:A:182:ASP:N	1:A:182:ASP:OD1	2.51	0.42
2:B:187:LYS:O	2:B:282:ASN:ND2	2.52	0.42
2:D:179:LYS:HE2	2:D:179:LYS:HB3	1.91	0.42
1:C:225:THR:HG21	1:C:233:ARG:HD2	2.01	0.42
2:B:157:GLY:C	2:B:159:CYS:H	2.22	0.42
1:A:399:GLN:HE21	1:A:436:LEU:HD11	1.85	0.42
1:A:267:ALA:HB2	1:A:715:SER:HB3	2.01	0.42
1:C:353:ASN:HD21	1:C:355:GLU:HG2	1.85	0.42
2:B:71:ARG:HD3	2:B:71:ARG:HA	1.83	0.42
8:A:1108:17F:H2	2:B:27:ARG:CZ	2.50	0.42
1:A:192:ILE:HA	1:A:193:PRO:HD3	1.70	0.42
1:A:403:SER:OG	1:A:406:LYS:NZ	2.53	0.42
2:D:167:TYR:C	2:D:169:TYR:N	2.73	0.42
1:A:978:PRO:HB3	5:G:1001:CLR:C19	2.43	0.42
1:A:118:PRO:C	1:A:121:ASP:H	2.23	0.42
2:B:179:LYS:HD2	2:B:256:GLN:HE21	1.85	0.42
2:D:179:LYS:HD2	2:D:256:GLN:HE21	1.84	0.42
2:B:162:LEU:HB3	2:B:163:ASN:H	1.51	0.42
2:B:76:GLY:HA2	2:B:293:GLY:H	1.84	0.42
2:B:167:TYR:C	2:B:169:TYR:N	2.73	0.42
1:C:743:LEU:HD11	1:C:751:ILE:CD1	2.49	0.42
1:C:849:GLN:OE1	1:C:994:TYR:OH	2.37	0.42

Continued on next page...

Continued from previous page...

Atom-1	Atom-2	Interatomic distance (Å)	Clash overlap (Å)
1:A:803:ILE:HG12	1:A:916:PHE:HD1	1.85	0.42
1:C:921:VAL:HG12	1:C:988:SER:OG	2.20	0.42
1:C:525:GLU:HA	1:C:528:LYS:HB3	2.01	0.42
2:B:239:PRO:HB3	2:B:241:GLN:HE21	1.85	0.41
1:C:708:THR:HG22	1:C:725:VAL:HB	2.02	0.41
2:D:16:ILE:O	2:D:18:ASN:N	2.51	0.41
1:A:708:THR:HG22	1:A:725:VAL:HB	2.02	0.41
1:C:620:ILE:HD13	1:C:620:ILE:HA	1.94	0.41
2:B:95:PRO:O	2:B:99:GLU:HG2	2.20	0.41
1:A:663:LEU:HD23	1:A:666:MET:SD	2.60	0.41
1:C:555:ASP:N	1:C:555:ASP:OD1	2.53	0.41
1:A:874:ILE:H	1:A:874:ILE:HD12	1.85	0.41
2:B:80:ILE:CG2	2:B:105:ILE:HA	2.51	0.41
1:C:118:PRO:C	1:C:121:ASP:H	2.24	0.41
1:C:978:PRO:HG3	3:E:26:VAL:HG13	2.02	0.41
1:A:108:TYR:CD2	1:A:123:LEU:HB2	2.55	0.41
1:C:651:ARG:HD3	1:C:651:ARG:HA	1.89	0.41
1:C:325:VAL:HA	1:C:326:PRO:HD3	1.73	0.41
1:C:108:TYR:CD2	1:C:123:LEU:HB2	2.55	0.41
1:A:323:ALA:HA	7:A:1107:DGX:C23	2.51	0.41
5:G:1001:CLR:H8	5:G:1001:CLR:H191	1.73	0.41
2:B:24:PHE:HB3	2:B:29:GLY:H	1.86	0.41
2:D:238:PHE:HA	2:D:239:PRO:HD3	1.95	0.41
1:C:94:SER:HB3	1:C:133:VAL:HG13	2.03	0.41
2:D:91:ARG:HG2	2:D:93:ASN:H	1.86	0.41
1:C:873:PRO:HA	1:C:876:LEU:HD12	2.03	0.41
1:A:555:ASP:OD1	1:A:555:ASP:N	2.53	0.41
1:A:964:CYS:HA	1:A:965:PRO:HD3	1.95	0.41
2:B:225:GLY:HA2	2:B:266:LEU:HD23	2.03	0.41
2:B:83:SER:HB3	2:B:87:GLU:H	1.85	0.41
2:D:167:TYR:O	2:D:167:TYR:CG	2.73	0.41
2:D:92:PRO:HD2	2:D:303:SER:HB2	2.03	0.41
1:A:921:VAL:HG12	1:A:988:SER:OG	2.21	0.41
2:D:31:SER:HB2	2:D:34:LYS:HD2	2.03	0.41
2:B:238:PHE:HA	2:B:239:PRO:HD3	1.96	0.41
1:A:818:GLU:OE2	1:A:931:LYS:NZ	2.42	0.41
1:A:755:VAL:O	1:A:759:ARG:HB2	2.20	0.41
1:C:403:SER:OG	1:C:406:LYS:NZ	2.54	0.41
2:D:95:PRO:O	2:D:99:GLU:HG2	2.20	0.41
1:A:473:ILE:HD12	1:A:483:LEU:HD21	2.01	0.41
1:A:553:LEU:HD13	1:A:558:PHE:CD2	2.56	0.41

Continued on next page...

Continued from previous page...

Atom-1	Atom-2	Interatomic distance (Å)	Clash overlap (Å)
1:C:54:ARG:HB3	1:C:54:ARG:HE	1.73	0.41
1:C:755:VAL:O	1:C:759:ARG:HB2	2.21	0.41
1:C:199:ILE:HG13	1:C:200:SER:N	2.36	0.41
1:A:883:TRP:HA	1:A:904:ARG:NH1	2.36	0.41
1:A:918:THR:O	1:A:922:VAL:HG22	2.21	0.41
1:C:553:LEU:HD13	1:C:558:PHE:CD2	2.56	0.41
1:C:309:THR:HG23	1:C:311:LEU:HB3	2.02	0.41
1:C:810:VAL:HB	1:C:811:PRO:HD3	2.02	0.40
1:A:608:MET:HB3	1:A:682:VAL:HG22	2.02	0.40
1:C:602:ALA:O	1:C:829:PRO:HD3	2.22	0.40
1:A:309:THR:HG23	1:A:311:LEU:HB3	2.03	0.40
1:C:773:LEU:HA	1:C:773:LEU:HD23	1.90	0.40
1:A:228:ASN:HA	1:A:229:PRO:HD3	1.89	0.40
1:C:503:ALA:HA	1:C:504:PRO:HD3	1.89	0.40
1:C:866:LEU:HA	1:C:866:LEU:HD23	1.76	0.40
2:B:80:ILE:HD11	2:B:177:ILE:HB	2.04	0.40
2:D:80:ILE:HD11	2:D:177:ILE:HB	2.03	0.40
1:C:108:TYR:CD1	1:C:118:PRO:HB2	2.57	0.40
1:A:199:ILE:HG13	1:A:200:SER:N	2.36	0.40
1:A:469:LYS:HB2	1:A:469:LYS:HE3	1.83	0.40
1:A:353:ASN:HD21	1:A:355:GLU:HG2	1.86	0.40
2:B:179:LYS:HB3	2:B:179:LYS:HE2	1.92	0.40
1:C:295:LEU:HA	1:C:295:LEU:HD23	1.85	0.40
2:D:80:ILE:CG2	2:D:105:ILE:HA	2.51	0.40
1:A:949:PHE:HB2	3:G:45:ILE:HG23	2.04	0.40
1:C:663:LEU:HD23	1:C:666:MET:SD	2.61	0.40
7:C:2005:DGX:H11	7:C:2005:DGX:H19B	1.91	0.40
1:C:783:PHE:CE1	7:C:2005:DGX:H2	2.56	0.40
5:C:2006:CLR:H213	5:C:2006:CLR:H231	1.88	0.40
2:B:225:GLY:HA2	2:B:265:ASN:O	2.22	0.40
2:D:139:TYR:OH	2:D:185:GLY:HA2	2.22	0.40

There are no symmetry-related clashes.

5.3 Torsion angles ⓘ

5.3.1 Protein backbone ⓘ

In the following table, the Percentiles column shows the percent Ramachandran outliers of the chain as a percentile score with respect to all X-ray entries followed by that with respect to entries of similar resolution.

The Analysed column shows the number of residues for which the backbone conformation was analysed, and the total number of residues.

Mol	Chain	Analysed	Favoured	Allowed	Outliers	Percentiles	
1	A	993/1021 (97%)	941 (95%)	52 (5%)	0	100	100
1	C	993/1021 (97%)	942 (95%)	51 (5%)	0	100	100
2	B	288/303 (95%)	268 (93%)	17 (6%)	3 (1%)	19	65
2	D	286/303 (94%)	265 (93%)	18 (6%)	3 (1%)	19	65
3	E	30/65 (46%)	30 (100%)	0	0	100	100
3	G	30/65 (46%)	30 (100%)	0	0	100	100
All	All	2620/2778 (94%)	2476 (94%)	138 (5%)	6 (0%)	52	86

All (6) Ramachandran outliers are listed below:

Mol	Chain	Res	Type
2	B	17	TRP
2	B	18	ASN
2	B	217	ARG
2	D	18	ASN
2	D	217	ARG
2	D	17	TRP

5.3.2 Protein sidechains ⓘ

In the following table, the Percentiles column shows the percent sidechain outliers of the chain as a percentile score with respect to all X-ray entries followed by that with respect to entries of similar resolution.

The Analysed column shows the number of residues for which the sidechain conformation was analysed, and the total number of residues.

Mol	Chain	Analysed	Rotameric	Outliers	Percentiles	
1	A	846/864 (98%)	832 (98%)	14 (2%)	68	88
1	C	846/864 (98%)	832 (98%)	14 (2%)	68	88
2	B	260/269 (97%)	253 (97%)	7 (3%)	52	80
2	D	258/269 (96%)	251 (97%)	7 (3%)	52	80
3	E	26/52 (50%)	25 (96%)	1 (4%)	40	74
3	G	26/52 (50%)	25 (96%)	1 (4%)	40	74
All	All	2262/2370 (95%)	2218 (98%)	44 (2%)	65	86

All (44) residues with a non-rotameric sidechain are listed below:

Mol	Chain	Res	Type
1	A	26	ASP
1	A	45	HIS
1	A	124	TYR
1	A	154	PHE
1	A	231	GLU
1	A	260	MET
1	A	431	GLU
1	A	459	SER
1	A	467	TYR
1	A	506	ARG
1	A	564	PHE
1	A	571	PHE
1	A	661	SER
1	A	972	ARG
2	B	28	THR
2	B	36	LEU
2	B	56	VAL
2	B	119	ASP
2	B	167	TYR
2	B	169	TYR
2	B	259	MET
3	G	45	ILE
1	C	26	ASP
1	C	45	HIS
1	C	124	TYR
1	C	154	PHE
1	C	231	GLU
1	C	260	MET
1	C	431	GLU
1	C	459	SER
1	C	467	TYR
1	C	506	ARG
1	C	564	PHE
1	C	571	PHE
1	C	661	SER
1	C	972	ARG
2	D	28	THR
2	D	36	LEU
2	D	56	VAL
2	D	119	ASP
2	D	167	TYR
2	D	169	TYR

Continued on next page...

Continued from previous page...

Mol	Chain	Res	Type
2	D	259	MET
3	E	45	ILE

Some sidechains can be flipped to improve hydrogen bonding and reduce clashes. All (5) such sidechains are listed below:

Mol	Chain	Res	Type
1	A	241	ASN
1	A	486	HIS
1	A	737	GLN
1	C	241	ASN
1	C	486	HIS

5.3.3 RNA ⓘ

There are no RNA molecules in this entry.

5.4 Non-standard residues in protein, DNA, RNA chains ⓘ

2 non-standard protein/DNA/RNA residues are modelled in this entry.

In the following table, the Counts columns list the number of bonds (or angles) for which Mogul statistics could be retrieved, the number of bonds (or angles) that are observed in the model and the number of bonds (or angles) that are defined in the chemical component dictionary. The Link column lists molecule types, if any, to which the group is linked. The Z score for a bond length (or angle) is the number of standard deviations the observed value is removed from the expected value. A bond length (or angle) with $|Z| > 2$ is considered an outlier worth inspection. RMSZ is the root-mean-square of all Z scores of the bond lengths (or angles).

Mol	Type	Chain	Res	Link	Bond lengths			Bond angles		
					Counts	RMSZ	$\# Z > 2$	Counts	RMSZ	$\# Z > 2$
1	PHD	A	369	1,4	8,11,12	1.12	1 (12%)	9,15,17	1.48	3 (33%)
1	PHD	C	369	1,4	8,11,12	1.17	1 (12%)	9,15,17	1.52	3 (33%)

In the following table, the Chirals column lists the number of chiral outliers, the number of chiral centers analysed, the number of these observed in the model and the number defined in the chemical component dictionary. Similar counts are reported in the Torsion and Rings columns. '-' means no outliers of that kind were identified.

Mol	Type	Chain	Res	Link	Chirals	Torsions	Rings
1	PHD	A	369	1,4	-	0/7/11/13	0/0/0/0

Continued on next page...

Continued from previous page...

Mol	Type	Chain	Res	Link	Chirals	Torsions	Rings
1	PHD	C	369	1,4	-	0/7/11/13	0/0/0/0

All (2) bond length outliers are listed below:

Mol	Chain	Res	Type	Atoms	Z	Observed(Å)	Ideal(Å)
1	C	369	PHD	CB-CA	-2.29	1.48	1.53
1	A	369	PHD	CB-CA	-2.11	1.49	1.53

All (6) bond angle outliers are listed below:

Mol	Chain	Res	Type	Atoms	Z	Observed(°)	Ideal(°)
1	C	369	PHD	OD2-CG-CB	-2.69	118.50	124.69
1	A	369	PHD	OD2-CG-CB	-2.42	119.12	124.69
1	A	369	PHD	O-C-CA	-2.21	119.73	125.49
1	C	369	PHD	O-C-CA	-2.19	119.80	125.49
1	C	369	PHD	CA-CB-CG	2.14	116.77	113.06
1	A	369	PHD	CA-CB-CG	2.16	116.80	113.06

There are no chirality outliers.

There are no torsion outliers.

There are no ring outliers.

No monomer is involved in short contacts.

5.5 Carbohydrates ⓘ

2 carbohydrates are modelled in this entry.

In the following table, the Counts columns list the number of bonds (or angles) for which Mogul statistics could be retrieved, the number of bonds (or angles) that are observed in the model and the number of bonds (or angles) that are defined in the chemical component dictionary. The Link column lists molecule types, if any, to which the group is linked. The Z score for a bond length (or angle) is the number of standard deviations the observed value is removed from the expected value. A bond length (or angle) with $|Z| > 2$ is considered an outlier worth inspection. RMSZ is the root-mean-square of all Z scores of the bond lengths (or angles).

Mol	Type	Chain	Res	Link	Bond lengths			Bond angles		
					Counts	RMSZ	$\# Z > 2$	Counts	RMSZ	$\# Z > 2$
9	NAG	B	1001	9,2	14,14,15	1.89	1 (7%)	15,19,21	0.73	0
9	NAG	B	1002	9	14,14,15	0.24	0	15,19,21	0.24	0

In the following table, the Chirals column lists the number of chiral outliers, the number of chiral centers analysed, the number of these observed in the model and the number defined in the chemical component dictionary. Similar counts are reported in the Torsion and Rings columns. '-' means no outliers of that kind were identified.

Mol	Type	Chain	Res	Link	Chirals	Torsions	Rings
9	NAG	B	1001	9,2	-	0/6/23/26	0/1/1/1
9	NAG	B	1002	9	-	0/6/23/26	0/1/1/1

All (1) bond length outliers are listed below:

Mol	Chain	Res	Type	Atoms	Z	Observed(Å)	Ideal(Å)
9	B	1001	NAG	O5-C1	6.89	1.55	1.43

There are no bond angle outliers.

There are no chirality outliers.

There are no torsion outliers.

There are no ring outliers.

No monomer is involved in short contacts.

5.6 Ligand geometry

Of 21 ligands modelled in this entry, 6 are monoatomic - leaving 15 for Mogul analysis.

In the following table, the Counts columns list the number of bonds (or angles) for which Mogul statistics could be retrieved, the number of bonds (or angles) that are observed in the model and the number of bonds (or angles) that are defined in the chemical component dictionary. The Link column lists molecule types, if any, to which the group is linked. The Z score for a bond length (or angle) is the number of standard deviations the observed value is removed from the expected value. A bond length (or angle) with $|Z| > 2$ is considered an outlier worth inspection. RMSZ is the root-mean-square of all Z scores of the bond lengths (or angles).

Mol	Type	Chain	Res	Link	Bond lengths			Bond angles		
					Counts	RMSZ	$\# Z > 2$	Counts	RMSZ	$\# Z > 2$
5	CLR	A	1104	-	31,31,31	2.17	7 (22%)	48,48,48	2.82	17 (35%)
6	SUC	A	1105	-	24,24,24	0.41	0	36,36,36	1.01	2 (5%)
6	SUC	A	1106	-	24,24,24	0.44	0	36,36,36	0.89	2 (5%)
7	DGX	A	1107	-	61,62,62	1.17	6 (9%)	88,98,98	1.71	19 (21%)
8	17F	A	1108	-	12,15,53	1.48	2 (16%)	10,20,60	2.51	2 (20%)
8	17F	A	1109	-	11,14,53	1.79	2 (18%)	8,19,60	2.23	2 (25%)
10	NAG	B	1003	2	14,14,15	0.37	0	15,19,21	0.33	0

Mol	Type	Chain	Res	Link	Bond lengths			Bond angles		
					Counts	RMSZ	# Z > 2	Counts	RMSZ	# Z > 2
8	17F	B	1004	-	20,23,53	1.54	2 (10%)	19,29,60	1.57	3 (15%)
5	CLR	C	2004	-	31,31,31	2.18	7 (22%)	48,48,48	2.70	17 (35%)
7	DGX	C	2005	-	61,62,62	1.14	4 (6%)	88,98,98	1.69	17 (19%)
5	CLR	C	2006	-	31,31,31	2.19	7 (22%)	48,48,48	2.58	16 (33%)
10	NAG	D	2001	2	14,14,15	0.38	0	15,19,21	0.22	0
10	NAG	D	2002	2	14,14,15	0.28	0	15,19,21	0.28	0
10	NAG	D	2003	2	14,14,15	0.59	0	15,19,21	0.74	1 (6%)
5	CLR	G	1001	-	31,31,31	2.19	8 (25%)	48,48,48	2.75	16 (33%)

In the following table, the Chirals column lists the number of chiral outliers, the number of chiral centers analysed, the number of these observed in the model and the number defined in the chemical component dictionary. Similar counts are reported in the Torsion and Rings columns. '-' means no outliers of that kind were identified.

Mol	Type	Chain	Res	Link	Chirals	Torsions	Rings
5	CLR	A	1104	-	-	0/10/68/68	0/4/4/4
6	SUC	A	1105	-	-	0/12/51/51	0/2/2/2
6	SUC	A	1106	-	-	0/12/51/51	0/2/2/2
7	DGX	A	1107	-	-	0/16/141/141	0/8/8/8
8	17F	A	1108	-	-	0/14/18/59	0/0/0/0
8	17F	A	1109	-	-	0/12/16/59	0/0/0/0
10	NAG	B	1003	2	-	0/6/23/26	0/1/1/1
8	17F	B	1004	-	-	0/24/28/59	0/0/0/0
5	CLR	C	2004	-	-	0/10/68/68	0/4/4/4
7	DGX	C	2005	-	-	0/16/141/141	0/8/8/8
5	CLR	C	2006	-	-	0/10/68/68	0/4/4/4
10	NAG	D	2001	2	-	0/6/23/26	0/1/1/1
10	NAG	D	2002	2	-	0/6/23/26	0/1/1/1
10	NAG	D	2003	2	-	0/6/23/26	0/1/1/1
5	CLR	G	1001	-	-	0/10/68/68	0/4/4/4

All (45) bond length outliers are listed below:

Mol	Chain	Res	Type	Atoms	Z	Observed(Å)	Ideal(Å)
5	C	2006	CLR	C20-C17	-2.66	1.49	1.54
5	G	1001	CLR	C20-C17	-2.58	1.49	1.54
5	G	1001	CLR	C15-C14	-2.54	1.48	1.54
5	C	2006	CLR	C13-C17	-2.53	1.49	1.55
7	A	1107	DGX	O14-C14	-2.43	1.39	1.44
5	C	2006	CLR	C15-C14	-2.40	1.48	1.54
5	G	1001	CLR	C13-C17	-2.37	1.50	1.55

Continued on next page...

Continued from previous page...

Mol	Chain	Res	Type	Atoms	Z	Observed(Å)	Ideal(Å)
5	A	1104	CLR	C20-C17	-2.35	1.50	1.54
5	C	2004	CLR	C15-C14	-2.24	1.49	1.54
5	A	1104	CLR	C15-C14	-2.23	1.49	1.54
7	C	2005	DGX	O14-C14	-2.22	1.40	1.44
5	C	2004	CLR	C20-C17	-2.20	1.50	1.54
5	G	1001	CLR	C19-C10	-2.08	1.50	1.54
5	C	2004	CLR	C13-C17	-2.03	1.50	1.55
5	A	1104	CLR	C13-C17	-2.02	1.50	1.55
7	A	1107	DGX	C4Z-C5Z	2.06	1.57	1.52
7	A	1107	DGX	C3Z-C4Z	2.13	1.55	1.52
7	C	2005	DGX	C2Z-C1Z	2.19	1.55	1.51
8	A	1108	17F	P1-O3	2.22	1.69	1.59
7	A	1107	DGX	C2Z-C1Z	2.28	1.56	1.51
8	A	1109	17F	C4-C5	2.42	1.60	1.51
5	C	2006	CLR	C12-C13	2.72	1.59	1.54
8	B	1004	17F	C4-C5	2.84	1.58	1.50
5	G	1001	CLR	C12-C13	2.89	1.59	1.54
7	C	2005	DGX	C4Y-C5Y	2.99	1.58	1.52
5	C	2004	CLR	C12-C13	3.00	1.59	1.54
5	A	1104	CLR	C12-C13	3.04	1.60	1.54
8	A	1108	17F	P1-O6	3.07	1.73	1.59
7	A	1107	DGX	C4Y-C5Y	3.07	1.58	1.52
5	G	1001	CLR	C8-C14	3.24	1.60	1.53
5	A	1104	CLR	C8-C14	3.38	1.60	1.53
5	C	2006	CLR	C8-C14	3.45	1.60	1.53
5	C	2004	CLR	C8-C14	3.48	1.60	1.53
7	C	2005	DGX	C4X-C5X	3.83	1.59	1.52
7	A	1107	DGX	C4X-C5X	3.88	1.59	1.52
8	A	1109	17F	P1-O6	4.32	1.78	1.59
5	G	1001	CLR	C11-C9	4.44	1.61	1.53
5	C	2004	CLR	C11-C9	4.68	1.62	1.53
5	C	2006	CLR	C11-C9	4.75	1.62	1.53
5	A	1104	CLR	C11-C9	4.79	1.62	1.53
8	B	1004	17F	P1-O6	4.85	1.81	1.59
5	A	1104	CLR	C6-C5	7.99	1.52	1.33
5	C	2006	CLR	C6-C5	8.05	1.52	1.33
5	G	1001	CLR	C6-C5	8.09	1.53	1.33
5	C	2004	CLR	C6-C5	8.11	1.53	1.33

All (114) bond angle outliers are listed below:

Continued on next page...

Continued from previous page...

Mol	Chain	Res	Type	Atoms	Z	Observed(°)	Ideal(°)
5	G	1001	CLR	C19-C10-C9	-7.57	101.99	111.67
5	C	2006	CLR	C4-C5-C6	-6.87	108.91	120.57
5	C	2004	CLR	C4-C5-C6	-6.65	109.28	120.57
5	A	1104	CLR	C4-C5-C6	-6.63	109.32	120.57
5	A	1104	CLR	C7-C6-C5	-6.51	111.01	125.01
5	C	2004	CLR	C7-C6-C5	-6.46	111.12	125.01
5	G	1001	CLR	C7-C6-C5	-6.35	111.35	125.01
5	A	1104	CLR	C12-C13-C17	-6.29	105.39	116.56
5	G	1001	CLR	C4-C5-C6	-6.25	109.97	120.57
5	C	2004	CLR	C12-C13-C17	-5.73	106.37	116.56
5	C	2006	CLR	C12-C13-C17	-5.69	106.44	116.56
5	G	1001	CLR	C12-C13-C17	-5.50	106.78	116.56
5	C	2006	CLR	C7-C6-C5	-5.47	113.26	125.01
5	C	2004	CLR	C19-C10-C9	-5.24	104.97	111.67
5	A	1104	CLR	C19-C10-C9	-5.10	105.16	111.67
5	G	1001	CLR	C10-C5-C6	-5.02	113.64	122.92
7	A	1107	DGX	C11-C9-C10	-4.66	108.94	113.79
7	C	2005	DGX	C4-C3-C2	-4.23	105.71	111.53
7	A	1107	DGX	C4-C3-C2	-4.15	105.81	111.53
5	C	2006	CLR	C19-C10-C9	-4.03	106.52	111.67
5	C	2006	CLR	C10-C5-C6	-3.84	115.82	122.92
7	C	2005	DGX	C11-C9-C10	-3.81	109.83	113.79
7	A	1107	DGX	O5Y-C1Y-C2Y	-3.59	105.39	110.85
5	C	2004	CLR	C4-C5-C10	-3.48	111.36	116.43
5	A	1104	CLR	C10-C5-C6	-3.48	116.49	122.92
5	A	1104	CLR	C4-C5-C10	-3.42	111.44	116.43
7	C	2005	DGX	O5Y-C1Y-C2Y	-3.33	105.77	110.85
5	C	2004	CLR	C10-C5-C6	-3.32	116.78	122.92
7	C	2005	DGX	C6Z-C5Z-C4Z	-3.16	106.85	113.08
7	C	2005	DGX	C6Y-C5Y-C4Y	-3.12	108.22	113.36
7	A	1107	DGX	O5X-C1X-C2X	-3.10	106.13	110.85
7	A	1107	DGX	C6Y-C5Y-C4Y	-3.08	108.28	113.36
7	C	2005	DGX	O5X-C1X-C2X	-2.97	106.33	110.85
5	A	1104	CLR	C21-C20-C22	-2.96	105.41	110.35
5	C	2006	CLR	C19-C10-C1	-2.94	105.02	109.43
5	A	1104	CLR	C19-C10-C1	-2.92	105.05	109.43
7	A	1107	DGX	C6Z-C5Z-C4Z	-2.89	107.40	113.08
5	C	2006	CLR	C21-C20-C22	-2.83	105.62	110.35
7	C	2005	DGX	C6X-C5X-C4X	-2.81	108.73	113.36
5	G	1001	CLR	C21-C20-C22	-2.64	105.95	110.35
5	C	2004	CLR	C21-C20-C22	-2.62	105.98	110.35

Continued on next page...

Continued from previous page...

Mol	Chain	Res	Type	Atoms	Z	Observed(°)	Ideal(°)
5	C	2004	CLR	C19-C10-C1	-2.60	105.52	109.43
6	A	1106	SUC	C1'-C2'-C3'	-2.46	106.17	114.49
7	A	1107	DGX	C6X-C5X-C4X	-2.37	109.46	113.36
7	A	1107	DGX	C19-C10-C9	-2.23	107.84	111.18
7	C	2005	DGX	C19-C10-C9	-2.21	107.87	111.18
5	G	1001	CLR	C19-C10-C1	-2.19	106.15	109.43
6	A	1106	SUC	C2'-O1-C1	-2.17	111.82	117.53
7	A	1107	DGX	O12-C12-C13	-2.07	105.67	110.72
5	C	2006	CLR	C16-C17-C13	-2.04	101.17	103.82
5	G	1001	CLR	C11-C12-C13	-2.02	109.23	112.84
6	A	1105	SUC	C6-C5-C4	-2.00	108.08	113.02
7	A	1107	DGX	C2-C1-C10	2.01	116.43	112.84
5	G	1001	CLR	C11-C9-C10	2.09	115.88	113.11
5	C	2004	CLR	C1-C2-C3	2.11	113.86	110.43
5	A	1104	CLR	C11-C9-C10	2.14	115.94	113.11
6	A	1105	SUC	O5-C5-C6	2.14	111.76	106.36
7	C	2005	DGX	C1Z-O4Y-C4Y	2.15	119.32	114.73
5	G	1001	CLR	C18-C13-C17	2.19	116.05	111.75
7	C	2005	DGX	C5-C4-C3	2.21	116.58	111.66
5	C	2004	CLR	C11-C9-C8	2.27	115.04	111.74
5	C	2004	CLR	C2-C1-C10	2.31	117.65	112.75
7	A	1107	DGX	C5-C4-C3	2.37	116.93	111.66
8	B	1004	17F	O9-C17-C18	2.41	116.77	111.53
8	B	1004	17F	O2-P1-O1	2.42	125.66	112.53
5	A	1104	CLR	C18-C13-C17	2.50	116.64	111.75
5	A	1104	CLR	C2-C1-C10	2.52	118.09	112.75
7	A	1107	DGX	C1-C2-C3	2.54	114.82	110.23
5	G	1001	CLR	C11-C9-C8	2.55	115.45	111.74
8	A	1108	17F	O2-P1-O1	2.57	126.45	112.53
5	G	1001	CLR	C2-C1-C10	2.60	118.27	112.75
10	D	2003	NAG	C1-O5-C5	2.61	115.57	112.25
7	A	1107	DGX	C15-C16-C17	2.64	109.73	104.37
8	A	1109	17F	O2-P1-O1	2.65	126.89	112.53
5	C	2004	CLR	C12-C11-C9	2.73	117.69	113.10
5	C	2006	CLR	C12-C11-C9	2.73	117.70	113.10
7	C	2005	DGX	C15-C16-C17	2.84	110.12	104.37
5	A	1104	CLR	C17-C13-C14	2.96	103.57	100.09
5	C	2006	CLR	C17-C13-C14	3.07	103.70	100.09
5	C	2006	CLR	C11-C9-C10	3.13	117.25	113.11
5	C	2006	CLR	C11-C9-C8	3.22	116.42	111.74
5	C	2006	CLR	C7-C8-C9	3.25	114.14	109.71
5	A	1104	CLR	C12-C11-C9	3.41	118.85	113.10

Continued on next page...

Continued from previous page...

Mol	Chain	Res	Type	Atoms	Z	Observed(°)	Ideal(°)
7	A	1107	DGX	C9-C10-C5	3.51	113.87	108.67
5	C	2004	CLR	C17-C13-C14	3.56	104.28	100.09
7	A	1107	DGX	C7-C8-C14	3.60	114.99	111.38
7	C	2005	DGX	C9-C10-C5	3.68	114.12	108.67
7	C	2005	DGX	O3-C3-C4	3.71	118.22	108.88
7	A	1107	DGX	C16-C17-C20	3.79	120.14	113.36
7	A	1107	DGX	O3-C3-C4	3.81	118.48	108.88
7	C	2005	DGX	O4Y-C4Y-C5Y	3.83	116.88	106.83
7	C	2005	DGX	C16-C17-C20	3.91	120.36	113.36
5	C	2004	CLR	C21-C20-C17	4.02	119.65	112.96
5	C	2006	CLR	C21-C20-C17	4.04	119.69	112.96
7	C	2005	DGX	C7-C8-C14	4.06	115.45	111.38
5	G	1001	CLR	C7-C8-C9	4.12	115.33	109.71
7	C	2005	DGX	O4X-C4X-C5X	4.19	117.81	106.83
5	G	1001	CLR	C7-C8-C14	4.19	117.40	110.86
7	A	1107	DGX	O4Y-C4Y-C5Y	4.23	117.92	106.83
7	A	1107	DGX	O4X-C4X-C5X	4.25	117.98	106.83
5	C	2006	CLR	C7-C8-C14	4.46	117.82	110.86
5	G	1001	CLR	C21-C20-C17	4.74	120.86	112.96
5	C	2004	CLR	C7-C8-C9	4.86	116.33	109.71
8	B	1004	17F	O3-C1-C2	5.01	111.83	108.18
5	C	2004	CLR	C7-C8-C14	5.08	118.78	110.86
5	A	1104	CLR	C7-C8-C14	5.16	118.91	110.86
8	A	1109	17F	O3-C1-C2	5.22	111.99	108.18
5	A	1104	CLR	C21-C20-C17	5.23	121.66	112.96
5	A	1104	CLR	C7-C8-C9	5.29	116.92	109.71
5	C	2004	CLR	C1-C10-C9	6.03	116.39	108.64
5	G	1001	CLR	C1-C10-C9	6.33	116.78	108.64
5	A	1104	CLR	C1-C10-C9	6.50	116.99	108.64
5	C	2006	CLR	C1-C10-C9	6.54	117.04	108.64
8	A	1108	17F	O3-C1-C2	6.89	113.21	108.18

There are no chirality outliers.

There are no torsion outliers.

There are no ring outliers.

12 monomers are involved in 44 short contacts:

Mol	Chain	Res	Type	Clashes	Symm-Clashes
5	A	1104	CLR	4	0
6	A	1105	SUC	11	0
6	A	1106	SUC	5	0

Continued on next page...

Continued from previous page...

Mol	Chain	Res	Type	Clashes	Symm-Clashes
7	A	1107	DGX	2	0
8	A	1108	17F	5	0
8	A	1109	17F	2	0
8	B	1004	17F	2	0
5	C	2004	CLR	5	0
7	C	2005	DGX	2	0
5	C	2006	CLR	2	0
10	D	2003	NAG	1	0
5	G	1001	CLR	5	0

5.7 Other polymers [i](#)

There are no such residues in this entry.

5.8 Polymer linkage issues [i](#)

There are no chain breaks in this entry.

6 Fit of model and data ⓘ

6.1 Protein, DNA and RNA chains ⓘ

In the following table, the column labelled ‘#RSRZ> 2’ contains the number (and percentage) of RSRZ outliers, followed by percent RSRZ outliers for the chain as percentile scores relative to all X-ray entries and entries of similar resolution. The OWAB column contains the minimum, median, 95th percentile and maximum values of the occupancy-weighted average B-factor per residue. The column labelled ‘Q< 0.9’ lists the number of (and percentage) of residues with an average occupancy less than 0.9.

Mol	Chain	Analysed	<RSRZ>	#RSRZ>2	OWAB(Å ²)	Q<0.9
1	A	995/1021 (97%)	-0.30	13 (1%) 79 70	109, 155, 307, 408	0
1	C	995/1021 (97%)	-0.23	23 (2%) 64 52	116, 190, 348, 473	0
2	B	290/303 (95%)	-0.30	3 (1%) 84 77	125, 222, 307, 421	0
2	D	288/303 (95%)	-0.14	5 (1%) 73 62	120, 198, 300, 381	0
3	E	32/65 (49%)	-0.69	0 100 100	97, 148, 217, 297	0
3	G	32/65 (49%)	-0.39	1 (3%) 52 40	128, 149, 228, 268	0
All	All	2632/2778 (94%)	-0.26	45 (1%) 73 62	97, 181, 324, 473	0

All (45) RSRZ outliers are listed below:

Mol	Chain	Res	Type	RSRZ
2	D	218	ASP	11.9
2	D	217	ARG	7.2
2	B	218	ASP	4.8
1	A	471	VAL	4.6
2	D	219	GLU	4.5
1	C	545	VAL	4.4
1	A	500	MET	4.4
1	C	467	TYR	4.0
1	C	489	PRO	3.9
1	C	515	LEU	3.5
1	C	543	GLU	3.3
1	A	580	GLY	3.2
1	C	579	VAL	3.1
1	C	496	HIS	3.1
1	A	501	LYS	3.0
1	A	579	VAL	2.9
2	B	163	ASN	2.9
2	D	23	GLU	2.9
1	C	538	LEU	2.8

Continued on next page...

Continued from previous page...

Mol	Chain	Res	Type	RSRZ
1	C	420	LEU	2.8
1	C	571	PHE	2.8
1	A	483	LEU	2.8
1	A	564	PHE	2.7
1	C	471	VAL	2.6
1	A	581	LEU	2.6
1	C	384	MET	2.6
1	A	548	PHE	2.6
1	C	440	VAL	2.6
1	C	498	LEU	2.6
2	D	274	ILE	2.5
1	C	490	ASN	2.5
1	C	470	ILE	2.5
1	C	553	LEU	2.4
1	C	383	HIS	2.4
1	C	581	LEU	2.4
1	A	485	ILE	2.4
1	C	578	PHE	2.3
2	B	217	ARG	2.3
1	A	479	ASN	2.3
3	G	19	PHE	2.3
1	C	491	THR	2.3
1	A	473	ILE	2.1
1	A	385	TRP	2.1
1	C	573	LEU	2.1
1	C	426	PHE	2.1

6.2 Non-standard residues in protein, DNA, RNA chains [\(i\)](#)

In the following table, the Atoms column lists the number of modelled atoms in the group and the number defined in the chemical component dictionary. LLDF column lists the quality of electron density of the group with respect to its neighbouring residues in protein, DNA or RNA chains. The B-factors column lists the minimum, median, 95th percentile and maximum values of B factors of atoms in the group. The column labelled 'Q< 0.9' lists the number of atoms with occupancy less than 0.9.

Mol	Type	Chain	Res	Atoms	RSCC	RSR	LLDF	B-factors(\AA^2)	Q<0.9
1	PHD	A	369	12/13	0.97	0.18	-	120,125,129,130	0
1	PHD	C	369	12/13	0.94	0.18	-	164,202,204,205	0

6.3 Carbohydrates ⓘ

In the following table, the Atoms column lists the number of modelled atoms in the group and the number defined in the chemical component dictionary. LLDF column lists the quality of electron density of the group with respect to its neighbouring residues in protein, DNA or RNA chains. The B-factors column lists the minimum, median, 95th percentile and maximum values of B factors of atoms in the group. The column labelled 'Q< 0.9' lists the number of atoms with occupancy less than 0.9.

Mol	Type	Chain	Res	Atoms	RSCC	RSR	LLDF	B-factors(Å ²)	Q<0.9
9	NAG	B	1002	14/15	0.85	0.44	-	245,257,261,266	0
9	NAG	B	1001	14/15	0.87	0.18	-	226,235,245,249	0

6.4 Ligands ⓘ

In the following table, the Atoms column lists the number of modelled atoms in the group and the number defined in the chemical component dictionary. LLDF column lists the quality of electron density of the group with respect to its neighbouring residues in protein, DNA or RNA chains. The B-factors column lists the minimum, median, 95th percentile and maximum values of B factors of atoms in the group. The column labelled 'Q< 0.9' lists the number of atoms with occupancy less than 0.9.

Mol	Type	Chain	Res	Atoms	RSCC	RSR	LLDF	B-factors(Å ²)	Q<0.9
4	MG	A	1102	1/1	0.90	0.63	12.51	115,115,115,115	0
4	MG	C	2002	1/1	0.94	0.63	5.79	148,148,148,148	0
8	17F	B	1004	24/54	0.67	0.40	3.39	128,215,240,263	0
5	CLR	C	2004	28/28	0.82	0.45	3.33	146,162,169,218	0
8	17F	A	1108	16/54	0.65	0.36	2.59	196,222,271,271	0
10	NAG	D	2001	14/15	0.84	0.29	1.99	201,213,221,222	0
7	DGX	A	1107	55/55	0.82	0.35	1.42	128,187,256,259	0
5	CLR	A	1104	28/28	0.84	0.31	0.79	128,137,188,190	0
7	DGX	C	2005	55/55	0.87	0.26	0.52	153,182,232,234	0
5	CLR	G	1001	28/28	0.93	0.25	0.36	143,143,143,143	0
6	SUC	A	1105	23/23	0.82	0.31	0.29	187,208,213,215	0
5	CLR	C	2006	28/28	0.90	0.25	0.28	143,143,143,143	0
4	MG	C	2003	1/1	0.95	0.31	-0.13	130,130,130,130	0
6	SUC	A	1106	23/23	0.88	0.21	-0.62	162,171,187,189	0
4	MG	A	1101	1/1	0.99	0.14	-1.03	123,123,123,123	0
4	MG	C	2001	1/1	0.91	0.17	-1.04	147,147,147,147	0
4	MG	A	1103	1/1	0.95	0.28	-1.24	112,112,112,112	0
8	17F	A	1109	15/54	0.71	0.36	-	143,217,306,306	0
10	NAG	D	2003	14/15	0.84	0.30	-	228,238,245,250	0
10	NAG	D	2002	14/15	0.81	0.15	-	179,191,200,204	0
10	NAG	B	1003	14/15	0.86	0.45	-	209,222,229,230	0

6.5 Other polymers

There are no such residues in this entry.