



# Full wwPDB X-ray Structure Validation Report ⓘ

Feb 1, 2016 – 01:04 PM GMT

PDB ID : 3SSM  
Title : MycE Methyltransferase from the Mycinamycin Biosynthetic Pathway in Complex with Mg and SAH, Crystal form 1  
Authors : Akey, D.L.; Smith, J.L.  
Deposited on : 2011-07-08  
Resolution : 2.25 Å(reported)

This is a Full wwPDB X-ray Structure Validation Report for a publicly released PDB entry.  
We welcome your comments at [validation@mail.wwpdb.org](mailto:validation@mail.wwpdb.org)  
A user guide is available at  
<http://wwpdb.org/validation/2016/XrayValidationReportHelp>  
with specific help available everywhere you see the ⓘ symbol.

---

The following versions of software and data (see [references ⓘ](#)) were used in the production of this report:

MolProbity : 4.02b-467  
Mogul : 1.7 (RC4), CSD as536be (2015)  
Xtriage (Phenix) : 1.9-1692  
EDS : rb-20026688  
Percentile statistics : 20151230.v01 (using entries in the PDB archive December 30th 2015)  
Refmac : 5.8.0135  
CCP4 : 6.5.0  
Ideal geometry (proteins) : Engh & Huber (2001)  
Ideal geometry (DNA, RNA) : Parkinson et al. (1996)  
Validation Pipeline (wwPDB-VP) : trunk26865

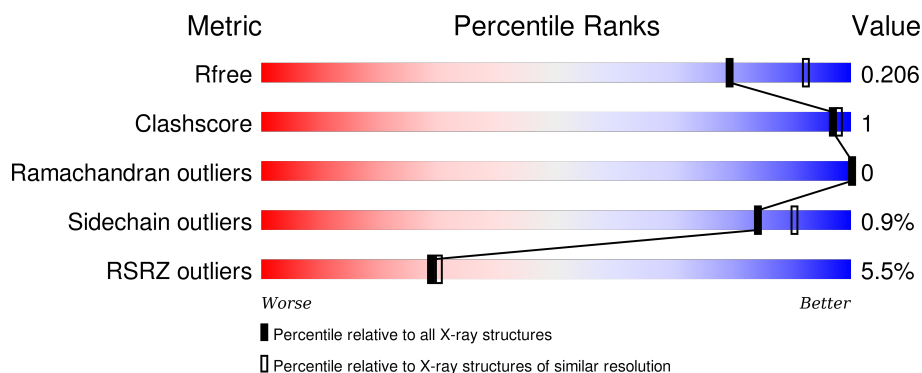
# 1 Overall quality at a glance

The following experimental techniques were used to determine the structure:

## *X-RAY DIFFRACTION*

The reported resolution of this entry is 2.25 Å.

Percentile scores (ranging between 0-100) for global validation metrics of the entry are shown in the following graphic. The table shows the number of entries on which the scores are based.



Metric	Whole archive (#Entries)	Similar resolution (#Entries, resolution range(Å))
$R_{free}$	91344	1611 (2.26-2.22)
Clashscore	102246	1764 (2.26-2.22)
Ramachandran outliers	100387	1724 (2.26-2.22)
Sidechain outliers	100360	1724 (2.26-2.22)
RSRZ outliers	91569	1616 (2.26-2.22)

The table below summarises the geometric issues observed across the polymeric chains and their fit to the electron density. The red, orange, yellow and green segments on the lower bar indicate the fraction of residues that contain outliers for  $\geq 3$ , 2, 1 and 0 types of geometric quality criteria. A grey segment represents the fraction of residues that are not modelled. The numeric value for each fraction is indicated below the corresponding segment, with a dot representing fractions  $\leq 5\%$ . The upper red bar (where present) indicates the fraction of residues that have poor fit to the electron density. The numeric value is given above the bar.

Mol	Chain	Length	Quality of chain
1	A	419	<div> <div>5%</div> <div>90%</div> <div>8%</div> </div>
1	B	419	<div> <div>7%</div> <div>81%</div> <div>16%</div> </div>
1	C	419	<div> <div>3%</div> <div>82%</div> <div>13%</div> </div>
1	D	419	<div> <div>5%</div> <div>91%</div> <div>6%</div> </div>

## 2 Entry composition

There are 4 unique types of molecules in this entry. The entry contains 12852 atoms, of which 0 are hydrogens and 0 are deuteriums.

In the tables below, the ZeroOcc column contains the number of atoms modelled with zero occupancy, the AltConf column contains the number of residues with at least one atom in alternate conformation and the Trace column contains the number of residues modelled with at most 2 atoms.

- Molecule 1 is a protein called Methyltransferase.

Mol	Chain	Residues	Atoms					ZeroOcc	AltConf	Trace
1	A	387	Total	C	N	O	S	0	0	0
			3085	1960	548	569	8			
1	B	354	Total	C	N	O	S	0	0	0
			2805	1768	502	529	6			
1	C	363	Total	C	N	O	S	0	1	0
			2910	1852	517	533	8			
1	D	393	Total	C	N	O	S	0	0	0
			3126	1982	554	582	8			

There are 80 discrepancies between the modelled and reference sequences:

Chain	Residue	Modelled	Actual	Comment	Reference
A	-19	MET	-	EXPRESSION TAG	UNP Q83WF2
A	-18	GLY	-	EXPRESSION TAG	UNP Q83WF2
A	-17	SER	-	EXPRESSION TAG	UNP Q83WF2
A	-16	SER	-	EXPRESSION TAG	UNP Q83WF2
A	-15	HIS	-	EXPRESSION TAG	UNP Q83WF2
A	-14	HIS	-	EXPRESSION TAG	UNP Q83WF2
A	-13	HIS	-	EXPRESSION TAG	UNP Q83WF2
A	-12	HIS	-	EXPRESSION TAG	UNP Q83WF2
A	-11	HIS	-	EXPRESSION TAG	UNP Q83WF2
A	-10	HIS	-	EXPRESSION TAG	UNP Q83WF2
A	-9	SER	-	EXPRESSION TAG	UNP Q83WF2
A	-8	SER	-	EXPRESSION TAG	UNP Q83WF2
A	-7	GLY	-	EXPRESSION TAG	UNP Q83WF2
A	-6	LEU	-	EXPRESSION TAG	UNP Q83WF2
A	-5	VAL	-	EXPRESSION TAG	UNP Q83WF2
A	-4	PRO	-	EXPRESSION TAG	UNP Q83WF2
A	-3	ARG	-	EXPRESSION TAG	UNP Q83WF2
A	-2	GLY	-	EXPRESSION TAG	UNP Q83WF2
A	-1	SER	-	EXPRESSION TAG	UNP Q83WF2
A	0	HIS	-	EXPRESSION TAG	UNP Q83WF2
B	-19	MET	-	EXPRESSION TAG	UNP Q83WF2

*Continued on next page...*

*Continued from previous page...*

Chain	Residue	Modelled	Actual	Comment	Reference
B	-18	GLY	-	EXPRESSION TAG	UNP Q83WF2
B	-17	SER	-	EXPRESSION TAG	UNP Q83WF2
B	-16	SER	-	EXPRESSION TAG	UNP Q83WF2
B	-15	HIS	-	EXPRESSION TAG	UNP Q83WF2
B	-14	HIS	-	EXPRESSION TAG	UNP Q83WF2
B	-13	HIS	-	EXPRESSION TAG	UNP Q83WF2
B	-12	HIS	-	EXPRESSION TAG	UNP Q83WF2
B	-11	HIS	-	EXPRESSION TAG	UNP Q83WF2
B	-10	HIS	-	EXPRESSION TAG	UNP Q83WF2
B	-9	SER	-	EXPRESSION TAG	UNP Q83WF2
B	-8	SER	-	EXPRESSION TAG	UNP Q83WF2
B	-7	GLY	-	EXPRESSION TAG	UNP Q83WF2
B	-6	LEU	-	EXPRESSION TAG	UNP Q83WF2
B	-5	VAL	-	EXPRESSION TAG	UNP Q83WF2
B	-4	PRO	-	EXPRESSION TAG	UNP Q83WF2
B	-3	ARG	-	EXPRESSION TAG	UNP Q83WF2
B	-2	GLY	-	EXPRESSION TAG	UNP Q83WF2
B	-1	SER	-	EXPRESSION TAG	UNP Q83WF2
B	0	HIS	-	EXPRESSION TAG	UNP Q83WF2
C	-19	MET	-	EXPRESSION TAG	UNP Q83WF2
C	-18	GLY	-	EXPRESSION TAG	UNP Q83WF2
C	-17	SER	-	EXPRESSION TAG	UNP Q83WF2
C	-16	SER	-	EXPRESSION TAG	UNP Q83WF2
C	-15	HIS	-	EXPRESSION TAG	UNP Q83WF2
C	-14	HIS	-	EXPRESSION TAG	UNP Q83WF2
C	-13	HIS	-	EXPRESSION TAG	UNP Q83WF2
C	-12	HIS	-	EXPRESSION TAG	UNP Q83WF2
C	-11	HIS	-	EXPRESSION TAG	UNP Q83WF2
C	-10	HIS	-	EXPRESSION TAG	UNP Q83WF2
C	-9	SER	-	EXPRESSION TAG	UNP Q83WF2
C	-8	SER	-	EXPRESSION TAG	UNP Q83WF2
C	-7	GLY	-	EXPRESSION TAG	UNP Q83WF2
C	-6	LEU	-	EXPRESSION TAG	UNP Q83WF2
C	-5	VAL	-	EXPRESSION TAG	UNP Q83WF2
C	-4	PRO	-	EXPRESSION TAG	UNP Q83WF2
C	-3	ARG	-	EXPRESSION TAG	UNP Q83WF2
C	-2	GLY	-	EXPRESSION TAG	UNP Q83WF2
C	-1	SER	-	EXPRESSION TAG	UNP Q83WF2
C	0	HIS	-	EXPRESSION TAG	UNP Q83WF2
D	-19	MET	-	EXPRESSION TAG	UNP Q83WF2
D	-18	GLY	-	EXPRESSION TAG	UNP Q83WF2
D	-17	SER	-	EXPRESSION TAG	UNP Q83WF2

*Continued on next page...*

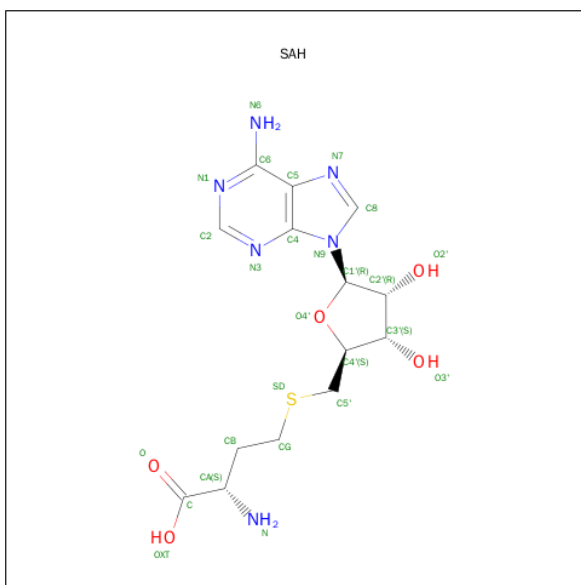
*Continued from previous page...*

Chain	Residue	Modelled	Actual	Comment	Reference
D	-16	SER	-	EXPRESSION TAG	UNP Q83WF2
D	-15	HIS	-	EXPRESSION TAG	UNP Q83WF2
D	-14	HIS	-	EXPRESSION TAG	UNP Q83WF2
D	-13	HIS	-	EXPRESSION TAG	UNP Q83WF2
D	-12	HIS	-	EXPRESSION TAG	UNP Q83WF2
D	-11	HIS	-	EXPRESSION TAG	UNP Q83WF2
D	-10	HIS	-	EXPRESSION TAG	UNP Q83WF2
D	-9	SER	-	EXPRESSION TAG	UNP Q83WF2
D	-8	SER	-	EXPRESSION TAG	UNP Q83WF2
D	-7	GLY	-	EXPRESSION TAG	UNP Q83WF2
D	-6	LEU	-	EXPRESSION TAG	UNP Q83WF2
D	-5	VAL	-	EXPRESSION TAG	UNP Q83WF2
D	-4	PRO	-	EXPRESSION TAG	UNP Q83WF2
D	-3	ARG	-	EXPRESSION TAG	UNP Q83WF2
D	-2	GLY	-	EXPRESSION TAG	UNP Q83WF2
D	-1	SER	-	EXPRESSION TAG	UNP Q83WF2
D	0	HIS	-	EXPRESSION TAG	UNP Q83WF2

- Molecule 2 is MAGNESIUM ION (three-letter code: MG) (formula: Mg).

Mol	Chain	Residues	Atoms	ZeroOcc	AltConf
2	A	1	Total Mg 1 1	0	0
2	D	1	Total Mg 1 1	0	0
2	C	1	Total Mg 1 1	0	0

- Molecule 3 is S-ADENOSYL-L-HOMOCYSTEINE (three-letter code: SAH) (formula: C<sub>14</sub>H<sub>20</sub>N<sub>6</sub>O<sub>5</sub>S).



Mol	Chain	Residues	Atoms					ZeroOcc	AltConf
3	A	1	Total 26	C 14	N 6	O 5	S 1	0	0
3	C	1	Total 26	C 14	N 6	O 5	S 1	0	0
3	D	1	Total 26	C 14	N 6	O 5	S 1	0	0

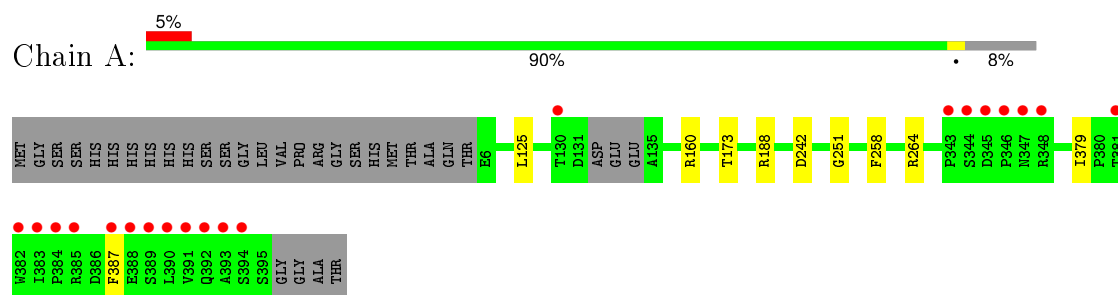
- Molecule 4 is water.

Mol	Chain	Residues	Atoms	ZeroOcc	AltConf
4	A	242	Total O 242 242	0	0
4	B	207	Total O 207 207	0	0
4	C	197	Total O 197 197	0	0
4	D	199	Total O 199 199	0	0

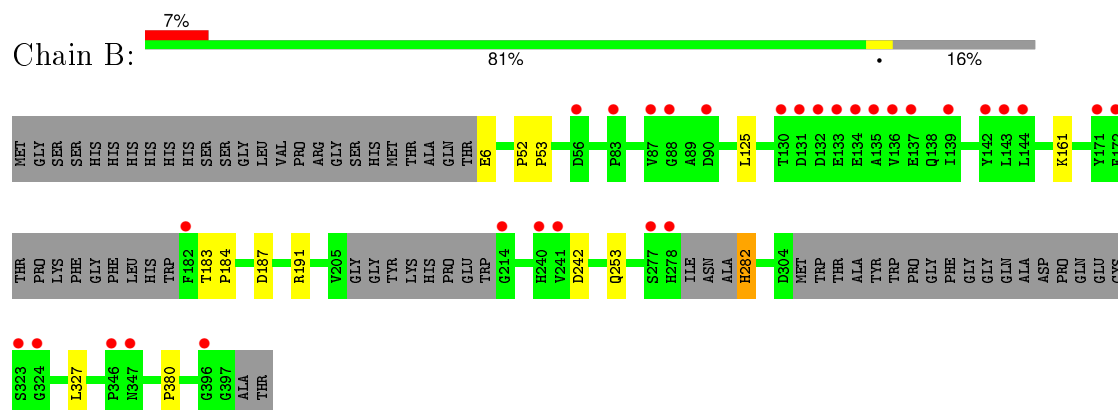
### 3 Residue-property plots [i](#)

These plots are drawn for all protein, RNA and DNA chains in the entry. The first graphic for a chain summarises the proportions of errors displayed in the second graphic. The second graphic shows the sequence view annotated by issues in geometry and electron density. Residues are color-coded according to the number of geometric quality criteria for which they contain at least one outlier: green = 0, yellow = 1, orange = 2 and red = 3 or more. A red dot above a residue indicates a poor fit to the electron density ( $RSRZ > 2$ ). Stretches of 2 or more consecutive residues without any outlier are shown as a green connector. Residues present in the sample, but not in the model, are shown in grey.

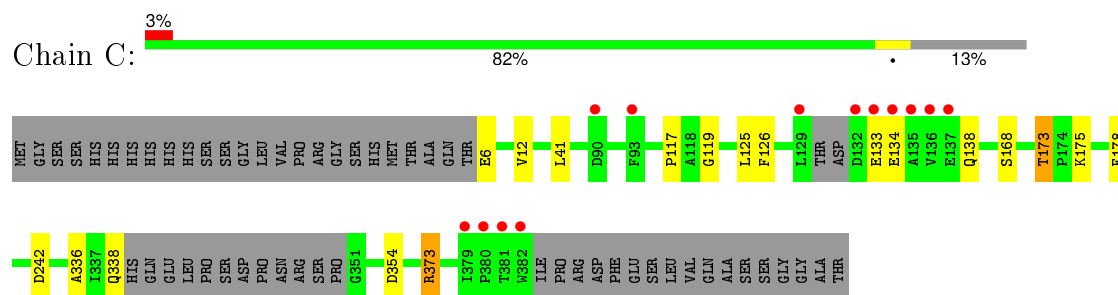
#### • Molecule 1: Methyltransferase



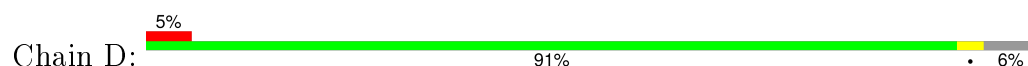
#### • Molecule 1: Methyltransferase

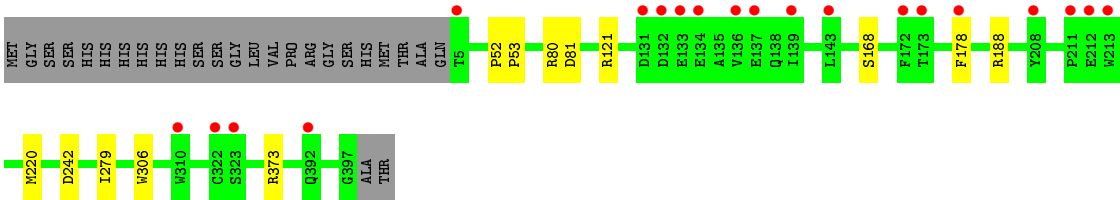


#### • Molecule 1: Methyltransferase



#### • Molecule 1: Methyltransferase







## 4 Data and refinement statistics

Property	Value	Source
Space group	P 1 21 1	Depositor
Cell constants a, b, c, $\alpha$ , $\beta$ , $\gamma$	73.91Å 143.41Å 84.64Å 90.00° 105.60° 90.00°	Depositor
Resolution (Å)	81.52 – 2.25 47.65 – 2.25	Depositor EDS
% Data completeness (in resolution range)	99.5 (81.52-2.25) 99.5 (47.65-2.25)	Depositor EDS
$R_{merge}$	0.09	Depositor
$R_{sym}$	(Not available)	Depositor
$\langle I/\sigma(I) \rangle$ <sup>1</sup>	2.49 (at 2.24Å)	Xtriage
Refinement program	REFMAC 5.5.0102	Depositor
R, $R_{free}$	0.165 , 0.210 0.163 , 0.206	Depositor DCC
$R_{free}$ test set	4025 reflections (5.28%)	DCC
Wilson B-factor (Å <sup>2</sup> )	32.9	Xtriage
Anisotropy	0.314	Xtriage
Bulk solvent $k_{sol}$ (e/Å <sup>3</sup> ), $B_{sol}$ (Å <sup>2</sup> )	0.32 , 41.4	EDS
Estimated twinning fraction	No twinning to report.	Xtriage
L-test for twinning <sup>2</sup>	$\langle  L  \rangle = 0.50$ , $\langle L^2 \rangle = 0.33$	Xtriage
Outliers	1 of 80307 reflections (0.001%)	Xtriage
$F_o, F_c$ correlation	0.96	EDS
Total number of atoms	12852	wwPDB-VP
Average B, all atoms (Å <sup>2</sup> )	41.0	wwPDB-VP

Xtriage's analysis on translational NCS is as follows: *The largest off-origin peak in the Patterson function is 3.83% of the height of the origin peak. No significant pseudotranslation is detected.*

<sup>1</sup>Intensities estimated from amplitudes.

<sup>2</sup>Theoretical values of  $\langle |L| \rangle$ ,  $\langle L^2 \rangle$  for acentric reflections are 0.5, 0.375 respectively for untwinned datasets, and 0.333, 0.2 for perfectly twinned datasets.

## 5 Model quality [i](#)

### 5.1 Standard geometry [i](#)

Bond lengths and bond angles in the following residue types are not validated in this section: MG, SAH

The Z score for a bond length (or angle) is the number of standard deviations the observed value is removed from the expected value. A bond length (or angle) with  $|Z| > 5$  is considered an outlier worth inspection. RMSZ is the root-mean-square of all Z scores of the bond lengths (or angles).

Mol	Chain	Bond lengths		Bond angles	
		RMSZ	$\# Z  > 5$	RMSZ	$\# Z  > 5$
1	A	0.40	0/3168	0.53	0/4300
1	B	0.39	0/2866	0.52	0/3879
1	C	0.39	0/2986	0.53	0/4047
1	D	0.39	0/3210	0.52	0/4358
All	All	0.39	0/12230	0.52	0/16584

There are no bond length outliers.

There are no bond angle outliers.

There are no chirality outliers.

There are no planarity outliers.

### 5.2 Too-close contacts [i](#)

In the following table, the Non-H and H(model) columns list the number of non-hydrogen atoms and hydrogen atoms in the chain respectively. The H(added) column lists the number of hydrogen atoms added and optimized by MolProbity. The Clashes column lists the number of clashes within the asymmetric unit, whereas Symm-Clashes lists symmetry related clashes.

Mol	Chain	Non-H	H(model)	H(added)	Clashes	Symm-Clashes
1	A	3085	0	2983	10	0
1	B	2805	0	2728	9	0
1	C	2910	0	2815	11	0
1	D	3126	0	3013	10	0
2	A	1	0	0	0	0
2	C	1	0	0	0	0
2	D	1	0	0	0	0
3	A	26	0	19	0	0
3	C	26	0	19	0	0

*Continued on next page...*

*Continued from previous page...*

Mol	Chain	Non-H	H(model)	H(added)	Clashes	Symm-Clashes
3	D	26	0	19	0	0
4	A	242	0	0	2	0
4	B	207	0	0	1	0
4	C	197	0	0	0	0
4	D	199	0	0	1	0
All	All	12852	0	11596	30	0

The all-atom clashscore is defined as the number of clashes found per 1000 atoms (including hydrogen atoms). The all-atom clashscore for this structure is 1.

All (30) close contacts within the same asymmetric unit are listed below, sorted by their clash magnitude.

Atom-1	Atom-2	Interatomic distance (Å)	Clash overlap (Å)
1:B:327:LEU:HD21	1:C:338:GLN:HG3	1.73	0.69
1:C:168:SER:HA	1:C:173:THR:HG23	1.89	0.54
1:B:253:GLN:HG2	4:B:515:HOH:O	2.11	0.50
1:A:125:LEU:HB2	1:C:178:PHE:CZ	2.48	0.49
1:A:387:PHE:HB2	1:D:279:ILE:HD11	1.94	0.49
1:C:134:GLU:HB3	1:C:138:GLN:HG2	1.95	0.49
1:A:379:ILE:HG13	1:D:306:TRP:CD2	2.49	0.48
1:B:187:ASP:O	1:B:191:ARG:HD3	2.14	0.47
1:D:168:SER:HB2	1:D:220:MET:HE3	1.97	0.47
1:B:253:GLN:OE1	1:B:282:HIS:CE1	2.68	0.47
1:A:264:ARG:NH1	4:A:563:HOH:O	2.49	0.46
1:A:251:GLY:HA3	1:A:258:PHE:CZ	2.51	0.46
1:C:373:ARG:HD2	1:D:121:ARG:C	2.38	0.44
1:D:188:ARG:NE	4:D:431:HOH:O	2.42	0.44
1:B:282:HIS:C	1:B:282:HIS:ND1	2.71	0.43
1:B:125:LEU:HB2	1:D:178:PHE:CZ	2.53	0.43
1:C:12:VAL:HG22	1:C:41:LEU:HD11	2.00	0.43
1:B:183:THR:N	1:B:184:PRO:CD	2.82	0.43
1:A:160:ARG:NH2	4:A:877:HOH:O	2.51	0.43
1:D:80:ARG:O	1:D:81:ASP:HB2	2.19	0.42
1:B:52:PRO:HA	1:B:53:PRO:HD3	1.88	0.42
1:A:125:LEU:HD21	1:B:380:PRO:HG3	2.01	0.42
1:C:125:LEU:O	1:C:126:PHE:C	2.58	0.42
1:C:336:ALA:HB1	1:C:354:ASP:HA	2.02	0.42
1:C:173:THR:OG1	1:C:175:LYS:HG2	2.20	0.41
1:C:119:GLY:HA2	1:D:373:ARG:O	2.21	0.41
1:D:52:PRO:HA	1:D:53:PRO:HD3	1.96	0.41
1:A:387:PHE:CB	1:D:279:ILE:HD11	2.51	0.41

*Continued on next page...*

*Continued from previous page...*

Atom-1	Atom-2	Interatomic distance (Å)	Clash overlap (Å)
1:A:251:GLY:HA3	1:A:258:PHE:CE2	2.56	0.41
1:A:188:ARG:NE	1:C:117:PRO:HG3	2.37	0.40

There are no symmetry-related clashes.

## 5.3 Torsion angles [i](#)

### 5.3.1 Protein backbone [i](#)

In the following table, the Percentiles column shows the percent Ramachandran outliers of the chain as a percentile score with respect to all X-ray entries followed by that with respect to entries of similar resolution.

The Analysed column shows the number of residues for which the backbone conformation was analysed, and the total number of residues.

Mol	Chain	Analysed	Favoured	Allowed	Outliers	Percentiles	
1	A	383/419 (91%)	376 (98%)	7 (2%)	0	100	100
1	B	344/419 (82%)	336 (98%)	8 (2%)	0	100	100
1	C	358/419 (85%)	347 (97%)	11 (3%)	0	100	100
1	D	391/419 (93%)	381 (97%)	10 (3%)	0	100	100
All	All	1476/1676 (88%)	1440 (98%)	36 (2%)	0	100	100

There are no Ramachandran outliers to report.

### 5.3.2 Protein sidechains [i](#)

In the following table, the Percentiles column shows the percent sidechain outliers of the chain as a percentile score with respect to all X-ray entries followed by that with respect to entries of similar resolution.

The Analysed column shows the number of residues for which the sidechain conformation was analysed, and the total number of residues.

Mol	Chain	Analysed	Rotameric	Outliers	Percentiles	
1	A	328/353 (93%)	326 (99%)	2 (1%)	90	94
1	B	302/353 (86%)	298 (99%)	4 (1%)	76	85
1	C	306/353 (87%)	301 (98%)	5 (2%)	70	80

*Continued on next page...*

*Continued from previous page...*

Mol	Chain	Analysed	Rotameric	Outliers	Percentiles	
1	D	332/353 (94%)	331 (100%)	1 (0%)	94	97
All	All	1268/1412 (90%)	1256 (99%)	12 (1%)	84	90

All (12) residues with a non-rotameric sidechain are listed below:

Mol	Chain	Res	Type
1	A	173	THR
1	A	242	ASP
1	B	6	GLU
1	B	161	LYS
1	B	242	ASP
1	B	282	HIS
1	C	6	GLU
1	C	133	GLU
1	C	173	THR
1	C	242	ASP
1	C	373	ARG
1	D	242	ASP

Some sidechains can be flipped to improve hydrogen bonding and reduce clashes. There are no such sidechains identified.

### 5.3.3 RNA ⓘ

There are no RNA molecules in this entry.

## 5.4 Non-standard residues in protein, DNA, RNA chains ⓘ

There are no non-standard protein/DNA/RNA residues in this entry.

### 5.5 Carbohydrates ⓘ

There are no carbohydrates in this entry.

### 5.6 Ligand geometry ⓘ

Of 6 ligands modelled in this entry, 3 are monoatomic - leaving 3 for Mogul analysis.

In the following table, the Counts columns list the number of bonds (or angles) for which Mogul statistics could be retrieved, the number of bonds (or angles) that are observed in the model and the number of bonds (or angles) that are defined in the chemical component dictionary. The Link column lists molecule types, if any, to which the group is linked. The Z score for a bond length (or angle) is the number of standard deviations the observed value is removed from the expected value. A bond length (or angle) with  $|Z| > 2$  is considered an outlier worth inspection. RMSZ is the root-mean-square of all Z scores of the bond lengths (or angles).

Mol	Type	Chain	Res	Link	Bond lengths			Bond angles		
					Counts	RMSZ	$\# Z  > 2$	Counts	RMSZ	$\# Z  > 2$
3	SAH	A	601	-	20,28,28	1.14	2 (10%)	19,40,40	2.07	3 (15%)
3	SAH	C	601	-	20,28,28	1.15	1 (5%)	19,40,40	1.95	3 (15%)
3	SAH	D	601	-	20,28,28	1.16	1 (5%)	19,40,40	2.04	3 (15%)

In the following table, the Chirals column lists the number of chiral outliers, the number of chiral centers analysed, the number of these observed in the model and the number defined in the chemical component dictionary. Similar counts are reported in the Torsion and Rings columns. '-' means no outliers of that kind were identified.

Mol	Type	Chain	Res	Link	Chirals	Torsions	Rings
3	SAH	A	601	-	-	0/7/31/31	0/3/3/3
3	SAH	C	601	-	-	0/7/31/31	0/3/3/3
3	SAH	D	601	-	-	0/7/31/31	0/3/3/3

All (4) bond length outliers are listed below:

Mol	Chain	Res	Type	Atoms	Z	Observed(Å)	Ideal(Å)
3	A	601	SAH	C5'-SD	-2.08	1.77	1.81
3	A	601	SAH	C5-C4	3.14	1.47	1.40
3	C	601	SAH	C5-C4	3.16	1.47	1.40
3	D	601	SAH	C5-C4	3.24	1.47	1.40

All (9) bond angle outliers are listed below:

Mol	Chain	Res	Type	Atoms	Z	Observed(°)	Ideal(°)
3	D	601	SAH	N3-C2-N1	-7.19	123.39	128.89
3	A	601	SAH	N3-C2-N1	-7.08	123.47	128.89
3	C	601	SAH	N3-C2-N1	-6.81	123.68	128.89
3	C	601	SAH	C4-C5-N7	-3.50	106.26	109.48
3	D	601	SAH	C4-C5-N7	-3.14	106.59	109.48
3	A	601	SAH	CB-CG-SD	-2.74	108.30	113.57
3	A	601	SAH	C4-C5-N7	-2.72	106.98	109.48
3	D	601	SAH	CB-CG-SD	-2.10	109.51	113.57
3	C	601	SAH	CB-CG-SD	-2.01	109.69	113.57

There are no chirality outliers.

There are no torsion outliers.

There are no ring outliers.

No monomer is involved in short contacts.

## 5.7 Other polymers

There are no such residues in this entry.

## 5.8 Polymer linkage issues

There are no chain breaks in this entry.

## 6 Fit of model and data ⓘ

### 6.1 Protein, DNA and RNA chains ⓘ

In the following table, the column labelled ‘#RSRZ> 2’ contains the number (and percentage) of RSRZ outliers, followed by percent RSRZ outliers for the chain as percentile scores relative to all X-ray entries and entries of similar resolution. The OWAB column contains the minimum, median, 95<sup>th</sup> percentile and maximum values of the occupancy-weighted average B-factor per residue. The column labelled ‘Q< 0.9’ lists the number of (and percentage) of residues with an average occupancy less than 0.9.

Mol	Chain	Analysed	<RSRZ>	#RSRZ>2	OWAB(Å <sup>2</sup> )	Q<0.9
1	A	387/419 (92%)	-0.15	20 (5%) 31 32	17, 32, 79, 164	0
1	B	354/419 (84%)	0.11	30 (8%) 13 14	18, 41, 93, 166	0
1	C	363/419 (86%)	-0.08	13 (3%) 46 49	19, 35, 70, 146	0
1	D	393/419 (93%)	-0.04	20 (5%) 32 33	20, 39, 76, 109	0
All	All	1497/1676 (89%)	-0.04	83 (5%) 29 30	17, 36, 83, 166	0

All (83) RSRZ outliers are listed below:

Mol	Chain	Res	Type	RSRZ
1	C	381	THR	6.2
1	B	133	GLU	6.1
1	C	134	GLU	6.0
1	B	132	ASP	5.8
1	A	347	ASN	5.7
1	A	346	PRO	5.6
1	B	323	SER	5.4
1	B	172	PHE	5.3
1	A	344	SER	4.7
1	B	139	ILE	4.4
1	B	131	ASP	4.0
1	B	182	PHE	3.9
1	A	390	LEU	3.7
1	B	214	GLY	3.7
1	A	392	GLN	3.6
1	A	384	PRO	3.6
1	B	396	GLY	3.6
1	A	381	THR	3.4
1	B	134	GLU	3.4
1	D	178	PHE	3.4
1	B	130	THR	3.3

*Continued on next page...*



*Continued from previous page...*

Mol	Chain	Res	Type	RSRZ
1	C	137	GLU	3.3
1	A	130	THR	3.2
1	D	5	THR	3.2
1	C	133	GLU	3.2
1	A	391	VAL	3.2
1	D	136	VAL	3.1
1	D	213	TRP	3.1
1	D	310	TRP	3.1
1	B	240	HIS	3.1
1	D	134	GLU	3.0
1	B	346	PRO	3.0
1	C	132	ASP	3.0
1	A	382	TRP	3.0
1	B	137	GLU	3.0
1	D	133	GLU	3.0
1	C	129	LEU	2.9
1	B	171	TYR	2.9
1	B	277	SER	2.8
1	A	383	ILE	2.8
1	D	323	SER	2.8
1	C	380	PRO	2.7
1	B	83	PRO	2.7
1	C	136	VAL	2.7
1	D	211	PRO	2.6
1	B	90	ASP	2.6
1	D	392	GLN	2.6
1	A	345	ASP	2.6
1	B	87	VAL	2.6
1	B	135	ALA	2.6
1	B	142	TYR	2.5
1	B	241	VAL	2.5
1	D	143	LEU	2.5
1	C	379	ILE	2.5
1	A	387	PHE	2.5
1	B	324	GLY	2.4
1	D	131	ASP	2.4
1	D	139	ILE	2.4
1	A	393	ALA	2.4
1	B	88	GLY	2.4
1	B	144	LEU	2.4
1	B	56	ASP	2.4
1	A	389	SER	2.4

*Continued on next page...*

*Continued from previous page...*

Mol	Chain	Res	Type	RSRZ
1	A	394	SER	2.4
1	C	90	ASP	2.3
1	B	143	LEU	2.2
1	B	347	ASN	2.2
1	C	382	TRP	2.2
1	C	93	PHE	2.2
1	D	322	CYS	2.2
1	B	136	VAL	2.2
1	D	212	GLU	2.2
1	A	343	PRO	2.1
1	D	132	ASP	2.1
1	A	388	GLU	2.1
1	A	348	ARG	2.1
1	C	135	ALA	2.1
1	D	172	PHE	2.1
1	A	385	ARG	2.0
1	D	137	GLU	2.0
1	D	208	TYR	2.0
1	D	173	THR	2.0
1	B	278	HIS	2.0

## 6.2 Non-standard residues in protein, DNA, RNA chains [i](#)

There are no non-standard protein/DNA/RNA residues in this entry.

## 6.3 Carbohydrates [i](#)

There are no carbohydrates in this entry.

## 6.4 Ligands [i](#)

In the following table, the Atoms column lists the number of modelled atoms in the group and the number defined in the chemical component dictionary. LLDF column lists the quality of electron density of the group with respect to its neighbouring residues in protein, DNA or RNA chains. The B-factors column lists the minimum, median, 95<sup>th</sup> percentile and maximum values of B factors of atoms in the group. The column labelled 'Q< 0.9' lists the number of atoms with occupancy less than 0.9.

Mol	Type	Chain	Res	Atoms	RSCC	RSR	LLDF	B-factors(Å <sup>2</sup> )	Q<0.9
3	SAH	C	601	26/26	0.96	0.14	1.41	37,39,41,43	0

*Continued on next page...*

*Continued from previous page...*

Mol	Type	Chain	Res	Atoms	RSCC	RSR	LLDF	B-factors( $\text{\AA}^2$ )	Q<0.9
2	MG	D	501	1/1	0.92	0.14	1.14	73,73,73,73	0
3	SAH	D	601	26/26	0.95	0.17	0.68	56,57,62,62	0
2	MG	A	501	1/1	0.94	0.12	0.53	52,52,52,52	0
3	SAH	A	601	26/26	0.97	0.09	-0.97	25,28,31,31	0
2	MG	C	501	1/1	0.97	0.05	-2.55	64,64,64,64	0

## 6.5 Other polymers [i](#)

There are no such residues in this entry.