



Full wwPDB X-ray Structure Validation Report ⓘ

Feb 19, 2016 – 07:38 PM GMT

PDB ID : 4UWC
Title : Fibroblast growth factor receptor 1 kinase in complex with JK-P3
Authors : Beeston, H.; Tucker, J.; Kankanala, J.
Deposited on : 2014-08-11
Resolution : 1.96 Å(reported)

This is a Full wwPDB X-ray Structure Validation Report for a publicly released PDB entry.
We welcome your comments at validation@mail.wwpdb.org
A user guide is available at
<http://wwpdb.org/validation/2016/XrayValidationReportHelp>
with specific help available everywhere you see the ⓘ symbol.

The following versions of software and data (see [references ⓘ](#)) were used in the production of this report:

MolProbity : 4.02b-467
Mogul : 1.7.1 (RC1), CSD as537be (2016)
Xtriage (Phenix) : 1.9-1692
EDS : rb-20026982
Percentile statistics : 20151230.v01 (using entries in the PDB archive December 30th 2015)
Refmac : 5.8.0135
CCP4 : 6.5.0
Ideal geometry (proteins) : Engh & Huber (2001)
Ideal geometry (DNA, RNA) : Parkinson et al. (1996)
Validation Pipeline (wwPDB-VP) : rb-20026982

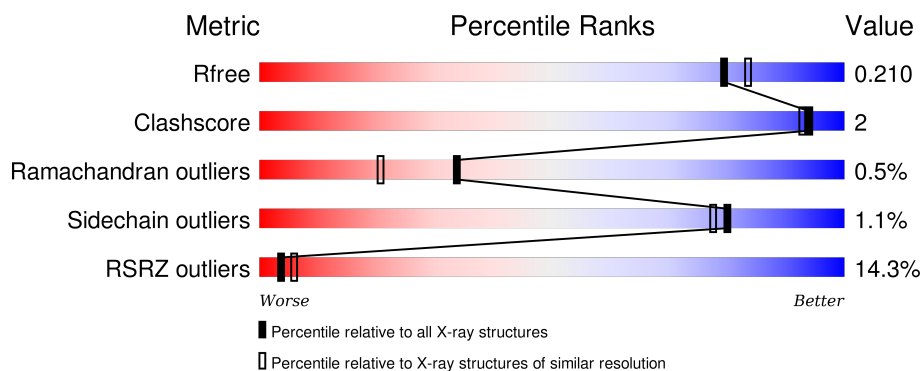
1 Overall quality at a glance

The following experimental techniques were used to determine the structure:

X-RAY DIFFRACTION

The reported resolution of this entry is 1.96 Å.

Percentile scores (ranging between 0-100) for global validation metrics of the entry are shown in the following graphic. The table shows the number of entries on which the scores are based.



Metric	Whole archive (#Entries)	Similar resolution (#Entries, resolution range(Å))
R_{free}	91344	1833 (1.96-1.96)
Clashscore	102246	1953 (1.96-1.96)
Ramachandran outliers	100387	1936 (1.96-1.96)
Sidechain outliers	100360	1936 (1.96-1.96)
RSRZ outliers	91569	1835 (1.96-1.96)

The table below summarises the geometric issues observed across the polymeric chains and their fit to the electron density. The red, orange, yellow and green segments on the lower bar indicate the fraction of residues that contain outliers for ≥ 3 , 2, 1 and 0 types of geometric quality criteria. A grey segment represents the fraction of residues that are not modelled. The numeric value for each fraction is indicated below the corresponding segment, with a dot representing fractions $\leq 5\%$. The upper red bar (where present) indicates the fraction of residues that have poor fit to the electron density. The numeric value is given above the bar.

Mol	Chain	Length	Quality of chain
1	A	309	<div> <div>14%</div> <div>92%</div> <div>6%</div> <div>.</div> </div>
1	B	309	<div> <div>14%</div> <div>94%</div> <div>.</div> <div>.</div> </div>

The following table lists non-polymeric compounds, carbohydrate monomers and non-standard residues in protein, DNA, RNA chains that are outliers for geometric or electron-density-fit criteria:

Mol	Type	Chain	Res	Chirality	Geometry	Clashes	Electron density
2	EDO	A	1766	-	-	-	X
2	EDO	A	1771	-	-	-	X
2	EDO	B	1766	-	-	-	X
2	EDO	B	1767	-	-	-	X
2	EDO	B	1768	-	-	-	X
2	EDO	B	1769	-	-	-	X
4	PPI	A	1774	-	-	-	X
4	PPI	A	1775	-	-	-	X
4	PPI	B	1771	-	-	-	X
5	SO4	A	1777	-	-	-	X

2 Entry composition [i](#)

There are 6 unique types of molecules in this entry. The entry contains 5154 atoms, of which 34 are hydrogens and 0 are deuteriums.

In the tables below, the ZeroOcc column contains the number of atoms modelled with zero occupancy, the AltConf column contains the number of residues with at least one atom in alternate conformation and the Trace column contains the number of residues modelled with at most 2 atoms.

- Molecule 1 is a protein called FIBROBLAST GROWTH FACTOR RECEPTOR 1.

Mol	Chain	Residues	Atoms					ZeroOcc	AltConf	Trace
1	A	301	Total	C	N	O	S	0	3	1
			2328	1485	397	427	19			
1	B	301	Total	C	N	O	S	0	2	0
			2312	1475	393	426	18			

There are 6 discrepancies between the modelled and reference sequences:

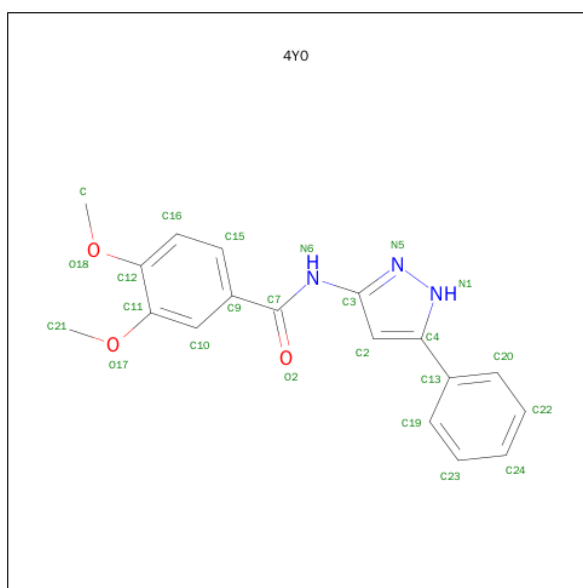
Chain	Residue	Modelled	Actual	Comment	Reference
A	457	GLY	-	EXPRESSION TAG	UNP P11362
A	488	ALA	CYS	ENGINEERED MUTATION	UNP P11362
A	584	SER	CYS	ENGINEERED MUTATION	UNP P11362
B	457	GLY	-	EXPRESSION TAG	UNP P11362
B	488	ALA	CYS	ENGINEERED MUTATION	UNP P11362
B	584	SER	CYS	ENGINEERED MUTATION	UNP P11362

- Molecule 2 is 1,2-ETHANEDIOL (three-letter code: EDO) (formula: C₂H₆O₂).



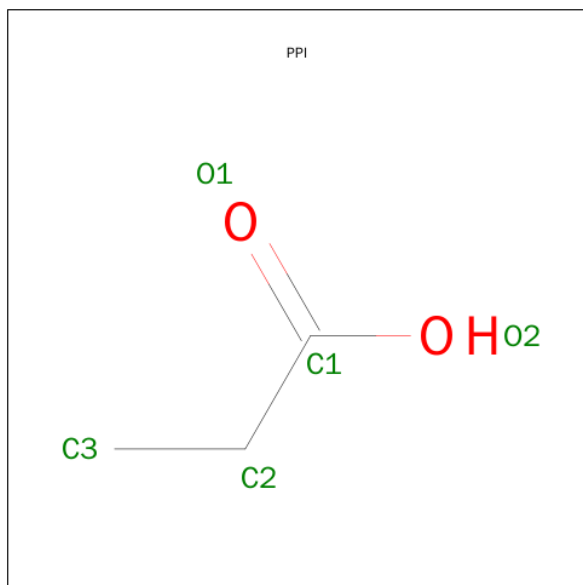
Mol	Chain	Residues	Atoms	ZeroOcc	AltConf
2	A	1	Total C O 4 2 2	0	0
2	A	1	Total C O 4 2 2	0	0
2	A	1	Total C O 4 2 2	0	0
2	A	1	Total C O 4 2 2	0	0
2	A	1	Total C O 4 2 2	0	0
2	A	1	Total C O 4 2 2	0	0
2	A	1	Total C O 4 2 2	0	0
2	B	1	Total C O 4 2 2	0	0
2	B	1	Total C O 4 2 2	0	0
2	B	1	Total C O 4 2 2	0	0
2	B	1	Total C O 4 2 2	0	0
2	B	1	Total C O 4 2 2	0	0

- Molecule 3 is 3,4-DIMETHOXY-N-(5-PHENYL-1H-PYRAZOL-3-YL)BENZAMIDE (three-letter code: 4Y0) (formula: $C_{18}H_{17}N_3O_3$).



Mol	Chain	Residues	Atoms					ZeroOcc	AltConf
3	A	1	Total	C	H	N	O	17	0
			41	18	17	3	3		
3	B	1	Total	C	H	N	O	17	0
			41	18	17	3	3		

- Molecule 4 is PROPANOIC ACID (three-letter code: PPI) (formula: $C_3H_6O_2$).



Mol	Chain	Residues	Atoms			ZeroOcc	AltConf
4	A	1	Total	C	O	0	0
			5	3	2		
4	A	1	Total	C	O	0	0
			5	3	2		
4	B	1	Total	C	O	0	0
			5	3	2		

- Molecule 5 is SULFATE ION (three-letter code: SO4) (formula: O_4S).



Mol	Chain	Residues	Atoms			ZeroOcc	AltConf
5	A	1	Total	O	S	0	0
			5	4	1		
5	A	1	Total	O	S	0	0
			5	4	1		
5	A	1	Total	O	S	0	0
			5	4	1		
5	A	1	Total	O	S	0	0
			5	4	1		
5	B	1	Total	O	S	0	0
			5	4	1		
5	B	1	Total	O	S	0	0
			5	4	1		

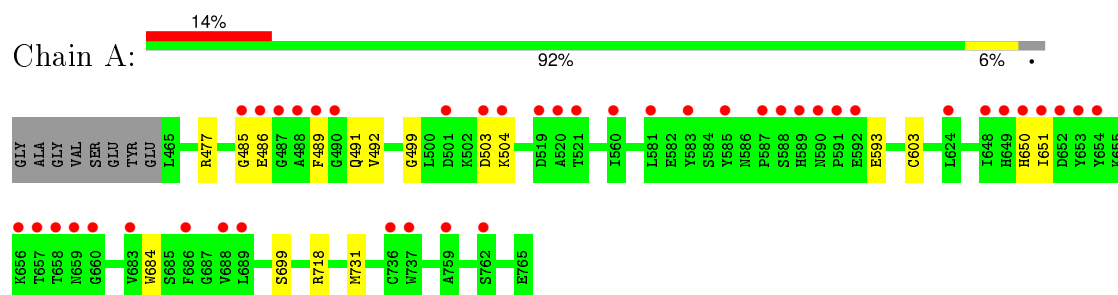
- Molecule 6 is water.

Mol	Chain	Residues	Atoms		ZeroOcc	AltConf
6	A	169	Total	O	0	0
			169	169		
6	B	170	Total	O	0	0
			170	170		

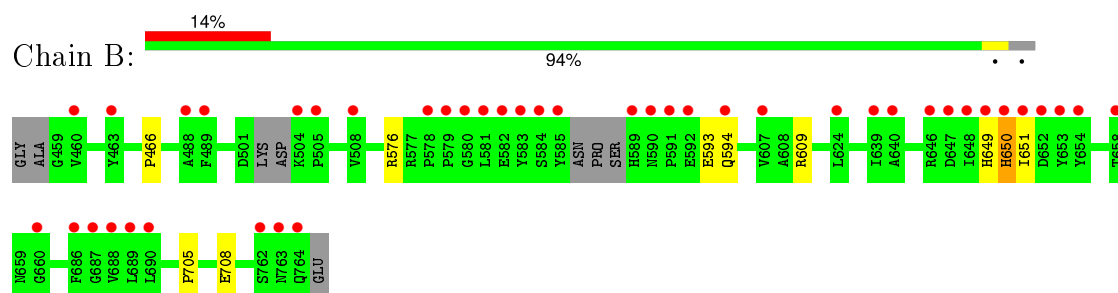
3 Residue-property plots

These plots are drawn for all protein, RNA and DNA chains in the entry. The first graphic for a chain summarises the proportions of errors displayed in the second graphic. The second graphic shows the sequence view annotated by issues in geometry and electron density. Residues are color-coded according to the number of geometric quality criteria for which they contain at least one outlier: green = 0, yellow = 1, orange = 2 and red = 3 or more. A red dot above a residue indicates a poor fit to the electron density ($RSRZ > 2$). Stretches of 2 or more consecutive residues without any outlier are shown as a green connector. Residues present in the sample, but not in the model, are shown in grey.

• Molecule 1: FIBROBLAST GROWTH FACTOR RECEPTOR 1



• Molecule 1: FIBROBLAST GROWTH FACTOR RECEPTOR 1



4 Data and refinement statistics

Property	Value	Source
Space group	C 1 2 1	Depositor
Cell constants a, b, c, α , β , γ	207.46Å 58.42Å 65.95Å 90.00° 107.38° 90.00°	Depositor
Resolution (Å)	29.21 – 1.96 28.48 – 1.96	Depositor EDS
% Data completeness (in resolution range)	87.6 (29.21-1.96) 87.6 (28.48-1.96)	Depositor EDS
R_{merge}	0.03	Depositor
R_{sym}	(Not available)	Depositor
$\langle I/\sigma(I) \rangle$ ¹	1.28 (at 1.96Å)	Xtriage
Refinement program	BUSTER 2.11.2	Depositor
R, R_{free}	0.177 , 0.206 0.183 , 0.210	Depositor DCC
R_{free} test set	2440 reflections (5.40%)	DCC
Wilson B-factor (Å ²)	39.1	Xtriage
Anisotropy	0.607	Xtriage
Bulk solvent k_{sol} (e/Å ³), B_{sol} (Å ²)	0.33 , 60.5	EDS
Estimated twinning fraction	0.025 for -h-2*k,l	Xtriage
L-test for twinning ²	$\langle L \rangle = 0.48$, $\langle L^2 \rangle = 0.31$	Xtriage
Outliers	0 of 47602 reflections	Xtriage
F_o, F_c correlation	0.96	EDS
Total number of atoms	5154	wwPDB-VP
Average B, all atoms (Å ²)	51.0	wwPDB-VP

Xtriage's analysis on translational NCS is as follows: *The largest off-origin peak in the Patterson function is 6.99% of the height of the origin peak. No significant pseudotranslation is detected.*

¹Intensities estimated from amplitudes.

²Theoretical values of $\langle |L| \rangle$, $\langle L^2 \rangle$ for acentric reflections are 0.5, 0.375 respectively for untwinned datasets, and 0.333, 0.2 for perfectly twinned datasets.

5 Model quality

5.1 Standard geometry

Bond lengths and bond angles in the following residue types are not validated in this section: PPI, 4Y0, SO4, EDO

The Z score for a bond length (or angle) is the number of standard deviations the observed value is removed from the expected value. A bond length (or angle) with $|Z| > 5$ is considered an outlier worth inspection. RMSZ is the root-mean-square of all Z scores of the bond lengths (or angles).

Mol	Chain	Bond lengths		Bond angles	
		RMSZ	# Z >5	RMSZ	# Z >5
1	A	0.52	0/2378	0.65	0/3225
1	B	0.49	0/2360	0.63	0/3202
All	All	0.51	0/4738	0.64	0/6427

There are no bond length outliers.

There are no bond angle outliers.

There are no chirality outliers.

There are no planarity outliers.

5.2 Too-close contacts

In the following table, the Non-H and H(model) columns list the number of non-hydrogen atoms and hydrogen atoms in the chain respectively. The H(added) column lists the number of hydrogen atoms added and optimized by MolProbity. The Clashes column lists the number of clashes within the asymmetric unit, whereas Symm-Clashes lists symmetry related clashes.

Mol	Chain	Non-H	H(model)	H(added)	Clashes	Symm-Clashes
1	A	2328	0	2259	12	0
1	B	2312	0	2224	4	0
2	A	28	0	42	5	0
2	B	20	0	30	2	0
3	A	24	17	17	0	0
3	B	24	17	17	0	0
4	A	10	0	10	1	0
4	B	5	0	5	0	0
5	A	20	0	0	0	0
5	B	10	0	0	0	0
6	A	169	0	0	1	0

Continued on next page...

Continued from previous page...

Mol	Chain	Non-H	H(model)	H(added)	Clashes	Symm-Clashes
6	B	170	0	0	0	0
All	All	5120	34	4604	17	0

The all-atom clashscore is defined as the number of clashes found per 1000 atoms (including hydrogen atoms). The all-atom clashscore for this structure is 2.

All (17) close contacts within the same asymmetric unit are listed below, sorted by their clash magnitude.

Atom-1	Atom-2	Interatomic distance (Å)	Clash overlap (Å)
1:A:699:SER:H	4:A:1774:PPI:H22	1.53	0.74
1:A:650:HIS:CB	1:A:651:ILE:HA	2.23	0.68
1:B:650:HIS:CB	1:B:651:ILE:HA	2.26	0.65
1:A:603[B]:CYS:SG	2:A:1771:EDO:C2	2.97	0.53
1:A:603[B]:CYS:SG	2:A:1771:EDO:H22	2.50	0.51
1:A:485:GLY:HA3	1:A:492:VAL:HB	1.94	0.50
2:B:1765:EDO:H22	2:B:1769:EDO:H11	1.92	0.50
1:A:684:TRP:HZ2	2:A:1767:EDO:H21	1.81	0.46
1:B:466:PRO:HD2	2:B:1768:EDO:H22	1.97	0.46
1:B:705:PRO:HD2	1:B:708:GLU:HB2	1.98	0.45
1:A:650:HIS:CB	1:A:651:ILE:CA	2.93	0.45
1:A:477[B]:ARG:NH2	1:A:499:GLY:O	2.51	0.43
1:A:503:ASP:HA	1:A:504:LYS:HA	1.84	0.43
1:B:576:ARG:HG2	1:B:593:GLU:O	2.18	0.43
1:A:718:ARG:HD3	2:A:1767:EDO:H12	2.02	0.42
1:A:731[B]:MET:HE3	6:A:2139:HOH:O	2.19	0.41
1:A:684:TRP:CZ2	2:A:1767:EDO:H21	2.55	0.40

There are no symmetry-related clashes.

5.3 Torsion angles ⓘ

5.3.1 Protein backbone ⓘ

In the following table, the Percentiles column shows the percent Ramachandran outliers of the chain as a percentile score with respect to all X-ray entries followed by that with respect to entries of similar resolution.

The Analysed column shows the number of residues for which the backbone conformation was analysed, and the total number of residues.

Mol	Chain	Analysed	Favoured	Allowed	Outliers	Percentiles	
1	A	300/309 (97%)	290 (97%)	9 (3%)	1 (0%)	46	35
1	B	297/309 (96%)	287 (97%)	8 (3%)	2 (1%)	26	14
All	All	597/618 (97%)	577 (97%)	17 (3%)	3 (0%)	34	21

All (3) Ramachandran outliers are listed below:

Mol	Chain	Res	Type
1	A	486	GLU
1	B	649	HIS
1	B	650	HIS

5.3.2 Protein sidechains ⓘ

In the following table, the Percentiles column shows the percent sidechain outliers of the chain as a percentile score with respect to all X-ray entries followed by that with respect to entries of similar resolution.

The Analysed column shows the number of residues for which the sidechain conformation was analysed, and the total number of residues.

Mol	Chain	Analysed	Rotameric	Outliers	Percentiles	
1	A	239/269 (89%)	236 (99%)	3 (1%)	76	72
1	B	234/269 (87%)	232 (99%)	2 (1%)	84	83
All	All	473/538 (88%)	468 (99%)	5 (1%)	80	77

All (5) residues with a non-rotameric sidechain are listed below:

Mol	Chain	Res	Type
1	A	489	PHE
1	A	491	GLN
1	A	593	GLU
1	B	594	GLN
1	B	609	ARG

Some sidechains can be flipped to improve hydrogen bonding and reduce clashes. There are no such sidechains identified.

5.3.3 RNA ⓘ

There are no RNA molecules in this entry.

5.4 Non-standard residues in protein, DNA, RNA chains [i](#)

There are no non-standard protein/DNA/RNA residues in this entry.

5.5 Carbohydrates [i](#)

There are no carbohydrates in this entry.

5.6 Ligand geometry [i](#)

23 ligands are modelled in this entry.

In the following table, the Counts columns list the number of bonds (or angles) for which Mogul statistics could be retrieved, the number of bonds (or angles) that are observed in the model and the number of bonds (or angles) that are defined in the chemical component dictionary. The Link column lists molecule types, if any, to which the group is linked. The Z score for a bond length (or angle) is the number of standard deviations the observed value is removed from the expected value. A bond length (or angle) with $|Z| > 2$ is considered an outlier worth inspection. RMSZ is the root-mean-square of all Z scores of the bond lengths (or angles).

Mol	Type	Chain	Res	Link	Bond lengths			Bond angles		
					Counts	RMSZ	$\# Z > 2$	Counts	RMSZ	$\# Z > 2$
2	EDO	A	1766	-	3,3,3	0.65	0	2,2,2	0.20	0
2	EDO	A	1767	-	3,3,3	0.50	0	2,2,2	0.68	0
2	EDO	A	1768	-	3,3,3	0.57	0	2,2,2	0.14	0
2	EDO	A	1769	-	3,3,3	0.64	0	2,2,2	0.26	0
2	EDO	A	1770	-	3,3,3	0.51	0	2,2,2	0.43	0
2	EDO	A	1771	-	3,3,3	0.54	0	2,2,2	0.38	0
2	EDO	A	1772	-	3,3,3	0.65	0	2,2,2	0.16	0
3	4Y0	A	1773	-	23,26,26	0.39	0	28,35,35	0.46	0
4	PPI	A	1774	-	1,4,4	0.56	0	0,4,4	0.00	-
4	PPI	A	1775	-	1,4,4	0.65	0	0,4,4	0.00	-
5	SO4	A	1776	-	4,4,4	0.30	0	6,6,6	0.25	0
5	SO4	A	1777	-	4,4,4	0.28	0	6,6,6	0.14	0
5	SO4	A	1778	-	4,4,4	0.22	0	6,6,6	0.16	0
5	SO4	A	1779	-	4,4,4	0.27	0	6,6,6	0.17	0
2	EDO	B	1765	-	3,3,3	0.50	0	2,2,2	0.48	0
2	EDO	B	1766	-	3,3,3	0.68	0	2,2,2	0.06	0
2	EDO	B	1767	-	3,3,3	0.47	0	2,2,2	0.40	0
2	EDO	B	1768	-	3,3,3	0.54	0	2,2,2	0.47	0
2	EDO	B	1769	-	3,3,3	0.54	0	2,2,2	0.35	0
3	4Y0	B	1770	-	23,26,26	0.37	0	28,35,35	0.42	0
4	PPI	B	1771	-	1,4,4	0.55	0	0,4,4	0.00	-
5	SO4	B	1772	-	4,4,4	0.63	0	6,6,6	0.18	0
5	SO4	B	1773	-	4,4,4	0.13	0	6,6,6	0.12	0

In the following table, the Chirals column lists the number of chiral outliers, the number of chiral centers analysed, the number of these observed in the model and the number defined in the chemical component dictionary. Similar counts are reported in the Torsion and Rings columns. '-' means no outliers of that kind were identified.

Mol	Type	Chain	Res	Link	Chirals	Torsions	Rings
2	EDO	A	1766	-	-	0/1/1/1	0/0/0/0
2	EDO	A	1767	-	-	0/1/1/1	0/0/0/0
2	EDO	A	1768	-	-	0/1/1/1	0/0/0/0
2	EDO	A	1769	-	-	0/1/1/1	0/0/0/0
2	EDO	A	1770	-	-	0/1/1/1	0/0/0/0
2	EDO	A	1771	-	-	0/1/1/1	0/0/0/0
2	EDO	A	1772	-	-	0/1/1/1	0/0/0/0
3	4Y0	A	1773	-	-	0/14/16/16	0/3/3/3
4	PPI	A	1774	-	-	0/0/2/2	0/0/0/0
4	PPI	A	1775	-	-	0/0/2/2	0/0/0/0
5	SO4	A	1776	-	-	0/0/0/0	0/0/0/0
5	SO4	A	1777	-	-	0/0/0/0	0/0/0/0
5	SO4	A	1778	-	-	0/0/0/0	0/0/0/0
5	SO4	A	1779	-	-	0/0/0/0	0/0/0/0
2	EDO	B	1765	-	-	0/1/1/1	0/0/0/0
2	EDO	B	1766	-	-	0/1/1/1	0/0/0/0
2	EDO	B	1767	-	-	0/1/1/1	0/0/0/0
2	EDO	B	1768	-	-	0/1/1/1	0/0/0/0
2	EDO	B	1769	-	-	0/1/1/1	0/0/0/0
3	4Y0	B	1770	-	-	0/14/16/16	0/3/3/3
4	PPI	B	1771	-	-	0/0/2/2	0/0/0/0
5	SO4	B	1772	-	-	0/0/0/0	0/0/0/0
5	SO4	B	1773	-	-	0/0/0/0	0/0/0/0

There are no bond length outliers.

There are no bond angle outliers.

There are no chirality outliers.

There are no torsion outliers.

There are no ring outliers.

6 monomers are involved in 8 short contacts:

Mol	Chain	Res	Type	Clashes	Symm-Clashes
2	A	1767	EDO	3	0
2	A	1771	EDO	2	0
4	A	1774	PPI	1	0
2	B	1765	EDO	1	0
2	B	1768	EDO	1	0

Continued on next page...

Continued from previous page...

Mol	Chain	Res	Type	Clashes	Symm-Clashes
2	B	1769	EDO	1	0

5.7 Other polymers [i](#)

There are no such residues in this entry.

5.8 Polymer linkage issues [i](#)

There are no chain breaks in this entry.

6 Fit of model and data ⓘ

6.1 Protein, DNA and RNA chains ⓘ

In the following table, the column labelled ‘#RSRZ> 2’ contains the number (and percentage) of RSRZ outliers, followed by percent RSRZ outliers for the chain as percentile scores relative to all X-ray entries and entries of similar resolution. The OWAB column contains the minimum, median, 95th percentile and maximum values of the occupancy-weighted average B-factor per residue. The column labelled ‘Q< 0.9’ lists the number of (and percentage) of residues with an average occupancy less than 0.9.

Mol	Chain	Analysed	<RSRZ>	#RSRZ>2	OWAB(Å ²)	Q<0.9
1	A	301/309 (97%)	0.73	43 (14%) 4 6	30, 46, 86, 98	7 (2%)
1	B	301/309 (97%)	0.57	43 (14%) 4 6	33, 47, 87, 110	5 (1%)
All	All	602/618 (97%)	0.65	86 (14%) 4 6	30, 47, 87, 110	12 (1%)

All (86) RSRZ outliers are listed below:

Mol	Chain	Res	Type	RSRZ
1	B	648	ILE	11.6
1	A	488	ALA	7.9
1	A	486	GLU	7.7
1	A	648	ILE	7.5
1	A	487	GLY	7.5
1	A	651	ILE	7.1
1	A	650	HIS	6.3
1	B	580	GLY	6.1
1	A	519	ASP	5.8
1	A	485	GLY	5.7
1	B	585	TYR	5.6
1	A	587	PRO	5.4
1	B	591	PRO	5.4
1	B	579	PRO	5.3
1	B	581	LEU	5.0
1	B	590	ASN	4.9
1	A	590	ASN	4.8
1	A	581	LEU	4.7
1	B	460	VAL	4.7
1	A	490	GLY	4.6
1	A	503	ASP	4.6
1	A	649	HIS	4.5
1	A	654	TYR	4.5
1	B	639	ILE	4.4

Continued on next page...

Continued from previous page...

Mol	Chain	Res	Type	RSRZ
1	A	585	TYR	4.4
1	A	588	SER	4.4
1	B	650	HIS	4.2
1	A	520	ALA	4.2
1	A	658	THR	4.1
1	B	649	HIS	4.1
1	B	652	ASP	4.1
1	B	592	GLU	4.0
1	B	582	GLU	3.9
1	B	583	TYR	3.8
1	A	652	ASP	3.7
1	B	647	ASP	3.7
1	B	651	ILE	3.7
1	B	764	GLN	3.7
1	A	589	HIS	3.7
1	B	763	ASN	3.7
1	B	504	LYS	3.6
1	B	489	PHE	3.6
1	A	521	THR	3.6
1	A	489	PHE	3.5
1	B	488	ALA	3.4
1	B	690	LEU	3.4
1	B	505	PRO	3.4
1	A	686	PHE	3.4
1	B	624	LEU	3.4
1	B	584	SER	3.4
1	A	683	VAL	3.4
1	A	591	PRO	3.3
1	B	607	VAL	3.1
1	A	583	TYR	3.1
1	B	660	GLY	3.0
1	A	592	GLU	2.9
1	B	653	TYR	2.9
1	B	589	HIS	2.9
1	A	653	TYR	2.9
1	B	654	TYR	2.8
1	A	660	GLY	2.8
1	B	688	VAL	2.8
1	A	659	ASN	2.8
1	B	578	PRO	2.7
1	A	624	LEU	2.7
1	A	688	VAL	2.7

Continued on next page...

Continued from previous page...

Mol	Chain	Res	Type	RSRZ
1	A	501	ASP	2.6
1	B	646	ARG	2.6
1	A	657	THR	2.6
1	B	508	VAL	2.6
1	B	762	SER	2.5
1	A	689	LEU	2.5
1	B	689	LEU	2.5
1	A	762	SER	2.5
1	B	687	GLY	2.4
1	B	658	THR	2.3
1	B	640	ALA	2.3
1	A	736	CYS	2.3
1	A	656	LYS	2.3
1	B	686	PHE	2.2
1	A	759	ALA	2.2
1	A	504	LYS	2.2
1	B	594	GLN	2.1
1	A	560	ILE	2.1
1	B	463	TYR	2.0
1	A	737	TRP	2.0

6.2 Non-standard residues in protein, DNA, RNA chains [i](#)

There are no non-standard protein/DNA/RNA residues in this entry.

6.3 Carbohydrates [i](#)

There are no carbohydrates in this entry.

6.4 Ligands [i](#)

In the following table, the Atoms column lists the number of modelled atoms in the group and the number defined in the chemical component dictionary. LLDF column lists the quality of electron density of the group with respect to its neighbouring residues in protein, DNA or RNA chains. The B-factors column lists the minimum, median, 95th percentile and maximum values of B factors of atoms in the group. The column labelled 'Q< 0.9' lists the number of atoms with occupancy less than 0.9.

Mol	Type	Chain	Res	Atoms	RSCC	RSR	LLDF	B-factors(Å ²)	Q<0.9
2	EDO	A	1771	4/4	0.93	0.39	13.77	42,43,44,44	4

Continued on next page...

Continued from previous page...

Mol	Type	Chain	Res	Atoms	RSCC	RSR	LLDF	B-factors(\AA^2)	Q<0.9
4	PPI	A	1774	5/5	0.71	0.23	5.43	65,68,68,70	0
2	EDO	B	1768	4/4	0.79	0.23	4.44	75,76,77,77	0
5	SO4	A	1777	5/5	0.90	0.26	3.79	75,76,78,78	5
4	PPI	A	1775	5/5	0.77	0.34	3.74	73,75,78,79	0
2	EDO	B	1767	4/4	0.98	0.30	3.51	51,54,56,56	0
2	EDO	A	1766	4/4	0.96	0.24	3.17	38,39,40,40	0
2	EDO	B	1769	4/4	0.75	0.23	2.97	72,75,77,79	0
4	PPI	B	1771	5/5	0.79	0.20	2.90	63,66,70,71	0
2	EDO	B	1766	4/4	0.97	0.24	2.23	42,44,45,45	0
3	4Y0	B	1770	24/24	0.84	0.18	1.30	45,58,75,76	17
2	EDO	A	1767	4/4	0.96	0.20	1.13	42,46,48,50	0
5	SO4	A	1776	5/5	0.87	0.21	0.73	45,55,57,58	4
2	EDO	A	1772	4/4	0.73	0.18	0.66	71,73,73,73	0
3	4Y0	A	1773	24/24	0.84	0.15	0.34	40,51,64,66	17
2	EDO	A	1768	4/4	0.96	0.12	-0.09	37,38,41,41	0
5	SO4	B	1772	5/5	0.98	0.12	-0.58	40,43,44,44	4
5	SO4	B	1773	5/5	0.93	0.12	-0.65	96,97,97,97	0
5	SO4	A	1779	5/5	0.93	0.22	-	71,76,77,78	0
2	EDO	A	1769	4/4	0.60	0.17	-	64,67,70,71	0
2	EDO	A	1770	4/4	0.88	0.30	-	99,99,99,99	0
5	SO4	A	1778	5/5	0.96	0.25	-	74,76,76,78	0
2	EDO	B	1765	4/4	0.93	0.28	-	72,72,74,76	0

6.5 Other polymers [i](#)

There are no such residues in this entry.