



wwPDB X-ray Structure Validation Summary Report ⓘ

Feb 1, 2016 – 05:57 AM GMT

PDB ID : 2VCK
Title : STRUCTURE OF PHYCOERYTHROBILIN SYNTHASE PEBS FROM
THE CYANOPHAGE P-SSM2 IN COMPLEX WITH THE BOUND SUB-
STRATE BILIVERDIN IXA
Authors : Dammeyer, T.; Hofmann, E.; Frankenberg-Dinkel, N.
Deposited on : 2007-09-25
Resolution : 1.80 Å(reported)

This is a wwPDB X-ray Structure Validation Summary Report for a publicly released PDB entry.
We welcome your comments at validation@mail.wwpdb.org
A user guide is available at
<http://wwpdb.org/validation/2016/XrayValidationReportHelp>
with specific help available everywhere you see the ⓘ symbol.

The following versions of software and data (see [references ⓘ](#)) were used in the production of this report:

MolProbity : 4.02b-467
Mogul : 1.7 (RC4), CSD as536be (2015)
Xtriage (Phenix) : 1.9-1692
EDS : rb-20026688
Percentile statistics : 20151230.v01 (using entries in the PDB archive December 30th 2015)
Refmac : 5.8.0135
CCP4 : 6.5.0
Ideal geometry (proteins) : Engh & Huber (2001)
Ideal geometry (DNA, RNA) : Parkinson et al. (1996)
Validation Pipeline (wwPDB-VP) : trunk26865

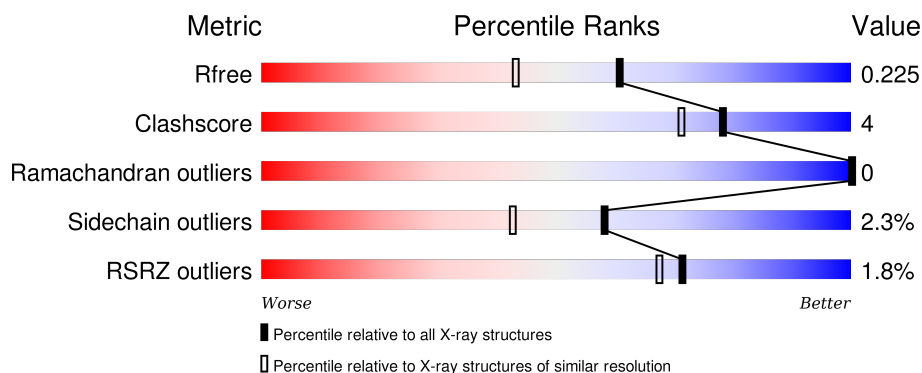
1 Overall quality at a glance

The following experimental techniques were used to determine the structure:

X-RAY DIFFRACTION

The reported resolution of this entry is 1.80 Å.

Percentile scores (ranging between 0-100) for global validation metrics of the entry are shown in the following graphic. The table shows the number of entries on which the scores are based.



Metric	Whole archive (#Entries)	Similar resolution (#Entries, resolution range(Å))
R_{free}	91344	4533 (1.80-1.80)
Clashscore	102246	5383 (1.80-1.80)
Ramachandran outliers	100387	5320 (1.80-1.80)
Sidechain outliers	100360	5319 (1.80-1.80)
RSRZ outliers	91569	4547 (1.80-1.80)

The table below summarises the geometric issues observed across the polymeric chains and their fit to the electron density. The red, orange, yellow and green segments on the lower bar indicate the fraction of residues that contain outliers for ≥ 3 , 2, 1 and 0 types of geometric quality criteria. A grey segment represents the fraction of residues that are not modelled. The numeric value for each fraction is indicated below the corresponding segment, with a dot representing fractions $\leq 5\%$. The upper red bar (where present) indicates the fraction of residues that have poor fit to the electron density. The numeric value is given above the bar.

Mol	Chain	Length	Quality of chain
1	A	233	<div> <div>%</div> <div> <div></div> <div>80%</div> <div>9%</div> <div>11%</div> </div> </div>
1	B	233	<div> <div>3%</div> <div> <div></div> <div>81%</div> <div>8%</div> <div>10%</div> </div> </div>
1	C	233	<div> <div>%</div> <div> <div></div> <div>81%</div> <div>7%</div> <div>10%</div> </div> </div>
1	D	233	<div> <div>2%</div> <div> <div></div> <div>88%</div> <div>10%</div> </div> </div>

2 Entry composition [i](#)

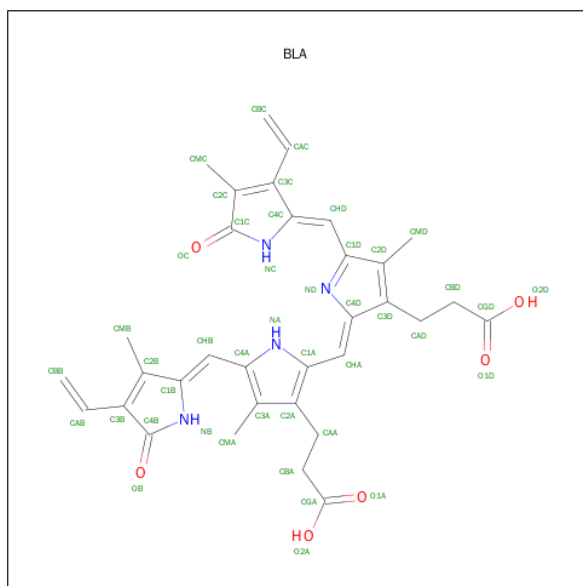
There are 3 unique types of molecules in this entry. The entry contains 7736 atoms, of which 0 are hydrogens and 0 are deuteriums.

In the tables below, the ZeroOcc column contains the number of atoms modelled with zero occupancy, the AltConf column contains the number of residues with at least one atom in alternate conformation and the Trace column contains the number of residues modelled with at most 2 atoms.

- Molecule 1 is a protein called CYANOBACTERIAL PHYCOERYTHROBILIN.

Mol	Chain	Residues	Atoms						ZeroOcc	AltConf	Trace
1	A	208	Total	C	N	O	S	Se	0	1	0
			1737	1125	278	326	2	6			
1	B	209	Total	C	N	O	S	Se	0	3	0
			1751	1133	277	333	2	6			
1	C	209	Total	C	N	O	S	Se	0	3	0
			1756	1138	279	331	2	6			
1	D	209	Total	C	N	O	S	Se	0	2	0
			1745	1131	277	329	2	6			

- Molecule 2 is BILIVERDINE IX ALPHA (three-letter code: BLA) (formula: $C_{33}H_{34}N_4O_6$).



Mol	Chain	Residues	Atoms				ZeroOcc	AltConf
2	A	1	Total	C	N	O	0	0
			43	33	4	6		
2	B	1	Total	C	N	O	0	0
			43	33	4	6		

Continued on next page...

Continued from previous page...

Mol	Chain	Residues	Atoms				ZeroOcc	AltConf
2	C	1	Total	C	N	O	0	0
			43	33	4	6		
2	D	1	Total	C	N	O	0	0
			43	33	4	6		

- Molecule 3 is water.

Mol	Chain	Residues	Atoms		ZeroOcc	AltConf
3	A	125	Total	O	0	0
			125	125		
3	B	139	Total	O	0	0
			139	139		
3	C	144	Total	O	0	0
			144	144		
3	D	167	Total	O	0	0
			167	167		

4 Data and refinement statistics

Property	Value	Source
Space group	P 1	Depositor
Cell constants a, b, c, α , β , γ	53.56Å 67.57Å 81.28Å 92.26° 109.07° 106.58°	Depositor
Resolution (Å)	49.21 – 1.80 49.19 – 1.80	Depositor EDS
% Data completeness (in resolution range)	100.0 (49.21-1.80) 92.3 (49.19-1.80)	Depositor EDS
R_{merge}	0.11	Depositor
R_{sym}	(Not available)	Depositor
$\langle I/\sigma(I) \rangle$ ¹	4.29 (at 1.79Å)	Xtriage
Refinement program	REFMAC 5.2.0019	Depositor
R, R_{free}	0.184 , 0.225 0.184 , 0.225	Depositor DCC
R_{free} test set	4819 reflections (5.53%)	DCC
Wilson B-factor (Å ²)	13.6	Xtriage
Anisotropy	0.293	Xtriage
Bulk solvent k_{sol} (e/Å ³), B_{sol} (Å ²)	0.37 , 50.5	EDS
Estimated twinning fraction	No twinning to report.	Xtriage
L-test for twinning ²	$\langle L \rangle = 0.47$, $\langle L^2 \rangle = 0.29$	Xtriage
Outliers	0 of 91990 reflections	Xtriage
F_o, F_c correlation	0.94	EDS
Total number of atoms	7736	wwPDB-VP
Average B, all atoms (Å ²)	15.0	wwPDB-VP

Xtriage's analysis on translational NCS is as follows: *The largest off-origin peak in the Patterson function is 5.88% of the height of the origin peak. No significant pseudotranslation is detected.*

¹Intensities estimated from amplitudes.

²Theoretical values of $\langle |L| \rangle$, $\langle L^2 \rangle$ for acentric reflections are 0.5, 0.375 respectively for untwinned datasets, and 0.333, 0.2 for perfectly twinned datasets.

5 Model quality [i](#)

5.1 Standard geometry [i](#)

Bond lengths and bond angles in the following residue types are not validated in this section: BLA

The Z score for a bond length (or angle) is the number of standard deviations the observed value is removed from the expected value. A bond length (or angle) with $|Z| > 5$ is considered an outlier worth inspection. RMSZ is the root-mean-square of all Z scores of the bond lengths (or angles).

Mol	Chain	Bond lengths		Bond angles	
		RMSZ	$\# Z > 5$	RMSZ	$\# Z > 5$
1	A	0.70	0/1778	0.72	0/2386
1	B	0.69	0/1799	0.72	0/2417
1	C	0.68	0/1803	0.74	1/2420 (0.0%)
1	D	0.70	0/1793	0.70	0/2408
All	All	0.69	0/7173	0.72	1/9631 (0.0%)

There are no bond length outliers.

All (1) bond angle outliers are listed below:

Mol	Chain	Res	Type	Atoms	Z	Observed(°)	Ideal(°)
1	C	81	ASP	CB-CG-OD1	5.44	123.19	118.30

There are no chirality outliers.

There are no planarity outliers.

5.2 Too-close contacts [i](#)

In the following table, the Non-H and H(model) columns list the number of non-hydrogen atoms and hydrogen atoms in the chain respectively. The H(added) column lists the number of hydrogen atoms added and optimized by MolProbity. The Clashes column lists the number of clashes within the asymmetric unit, whereas Symm-Clashes lists symmetry related clashes.

Mol	Chain	Non-H	H(model)	H(added)	Clashes	Symm-Clashes
1	A	1737	0	1659	14	0
1	B	1751	0	1668	14	0
1	C	1756	0	1681	18	0
1	D	1745	0	1671	3	0
2	A	43	0	32	2	0
2	B	43	0	32	3	0

Continued on next page...

Continued from previous page...

Mol	Chain	Non-H	H(model)	H(added)	Clashes	Symm-Clashes
2	C	43	0	32	4	0
2	D	43	0	32	1	0
3	A	125	0	0	6	0
3	B	139	0	0	5	0
3	C	144	0	0	1	0
3	D	167	0	0	1	0
All	All	7736	0	6807	50	0

The all-atom clashscore is defined as the number of clashes found per 1000 atoms (including hydrogen atoms). The all-atom clashscore for this structure is 4.

The worst 5 of 50 close contacts within the same asymmetric unit are listed below, sorted by their clash magnitude.

Atom-1	Atom-2	Interatomic distance (Å)	Clash overlap (Å)
1:A:70:HIS:ND1	3:A:2031:HOH:O	1.94	0.97
1:B:200:THR:O	1:B:204:GLU:HG2	1.80	0.81
1:A:70:HIS:CE1	3:A:2031:HOH:O	2.38	0.71
1:B:186:LYS:NZ	3:B:2114:HOH:O	2.23	0.70
3:A:2064:HOH:O	1:B:139:GLY:HA3	1.95	0.66

There are no symmetry-related clashes.

5.3 Torsion angles [i](#)

5.3.1 Protein backbone [i](#)

In the following table, the Percentiles column shows the percent Ramachandran outliers of the chain as a percentile score with respect to all X-ray entries followed by that with respect to entries of similar resolution.

The Analysed column shows the number of residues for which the backbone conformation was analysed, and the total number of residues.

Mol	Chain	Analysed	Favoured	Allowed	Outliers	Percentiles	
1	A	203/233 (87%)	200 (98%)	3 (2%)	0	100	100
1	B	208/233 (89%)	202 (97%)	6 (3%)	0	100	100
1	C	208/233 (89%)	204 (98%)	4 (2%)	0	100	100
1	D	207/233 (89%)	202 (98%)	5 (2%)	0	100	100
All	All	826/932 (89%)	808 (98%)	18 (2%)	0	100	100

There are no Ramachandran outliers to report.

5.3.2 Protein sidechains ⓘ

In the following table, the Percentiles column shows the percent sidechain outliers of the chain as a percentile score with respect to all X-ray entries followed by that with respect to entries of similar resolution.

The Analysed column shows the number of residues for which the sidechain conformation was analysed, and the total number of residues.

Mol	Chain	Analysed	Rotameric	Outliers	Percentiles	
1	A	188/204 (92%)	180 (96%)	8 (4%)	35	17
1	B	191/204 (94%)	187 (98%)	4 (2%)	61	47
1	C	191/204 (94%)	186 (97%)	5 (3%)	54	37
1	D	190/204 (93%)	189 (100%)	1 (0%)	92	91
All	All	760/816 (93%)	742 (98%)	18 (2%)	58	41

5 of 18 residues with a non-rotameric sidechain are listed below:

Mol	Chain	Res	Type
1	B	46	LYS
1	B	48	ASP
1	C	115[A]	ILE
1	A	215	LYS
1	A	218	GLU

Some sidechains can be flipped to improve hydrogen bonding and reduce clashes. All (2) such sidechains are listed below:

Mol	Chain	Res	Type
1	B	83	ASN
1	B	166	GLN

5.3.3 RNA ⓘ

There are no RNA molecules in this entry.

5.4 Non-standard residues in protein, DNA, RNA chains ⓘ

There are no non-standard protein/DNA/RNA residues in this entry.

5.5 Carbohydrates

There are no carbohydrates in this entry.

5.6 Ligand geometry

4 ligands are modelled in this entry.

In the following table, the Counts columns list the number of bonds (or angles) for which Mogul statistics could be retrieved, the number of bonds (or angles) that are observed in the model and the number of bonds (or angles) that are defined in the chemical component dictionary. The Link column lists molecule types, if any, to which the group is linked. The Z score for a bond length (or angle) is the number of standard deviations the observed value is removed from the expected value. A bond length (or angle) with $|Z| > 2$ is considered an outlier worth inspection. RMSZ is the root-mean-square of all Z scores of the bond lengths (or angles).

Mol	Type	Chain	Res	Link	Bond lengths			Bond angles		
					Counts	RMSZ	# $ Z > 2$	Counts	RMSZ	# $ Z > 2$
2	BLA	A	1234	-	35,46,46	1.42	4 (11%)	43,67,67	1.20	6 (13%)
2	BLA	B	1234	-	35,46,46	1.55	4 (11%)	43,67,67	1.18	3 (6%)
2	BLA	C	1234	-	35,46,46	1.42	7 (20%)	43,67,67	1.74	6 (13%)
2	BLA	D	1234	-	35,46,46	1.54	5 (14%)	43,67,67	1.25	3 (6%)

In the following table, the Chirals column lists the number of chiral outliers, the number of chiral centers analysed, the number of these observed in the model and the number defined in the chemical component dictionary. Similar counts are reported in the Torsion and Rings columns. '-' means no outliers of that kind were identified.

Mol	Type	Chain	Res	Link	Chirals	Torsions	Rings
2	BLA	A	1234	-	-	0/22/74/74	0/4/4/4
2	BLA	B	1234	-	-	0/22/74/74	0/4/4/4
2	BLA	C	1234	-	-	0/22/74/74	0/4/4/4
2	BLA	D	1234	-	-	0/22/74/74	0/4/4/4

The worst 5 of 20 bond length outliers are listed below:

Mol	Chain	Res	Type	Atoms	Z	Observed(Å)	Ideal(Å)
2	C	1234	BLA	OC-C1C	-2.21	1.19	1.23
2	A	1234	BLA	C4D-C3D	-2.14	1.41	1.45
2	D	1234	BLA	C4A-CHB	2.03	1.48	1.40
2	C	1234	BLA	CAD-C3D	2.24	1.57	1.51
2	B	1234	BLA	C1B-C2B	2.25	1.49	1.45

The worst 5 of 18 bond angle outliers are listed below:

Mol	Chain	Res	Type	Atoms	Z	Observed(°)	Ideal(°)
2	C	1234	BLA	CAD-C3D-C2D	-6.10	117.36	128.01
2	C	1234	BLA	CBA-CAA-C2A	-3.72	105.87	112.53
2	D	1234	BLA	CAD-C3D-C2D	-3.21	122.41	128.01
2	A	1234	BLA	C1B-NB-C4B	-2.64	106.87	110.73
2	A	1234	BLA	CAD-C3D-C4D	-2.28	120.99	125.06

There are no chirality outliers.

There are no torsion outliers.

There are no ring outliers.

4 monomers are involved in 10 short contacts:

Mol	Chain	Res	Type	Clashes	Symm-Clashes
2	A	1234	BLA	2	0
2	B	1234	BLA	3	0
2	C	1234	BLA	4	0
2	D	1234	BLA	1	0

5.7 Other polymers [i](#)

There are no such residues in this entry.

5.8 Polymer linkage issues [i](#)

There are no chain breaks in this entry.

6 Fit of model and data [i](#)

6.1 Protein, DNA and RNA chains [i](#)

In the following table, the column labelled ‘#RSRZ> 2’ contains the number (and percentage) of RSRZ outliers, followed by percent RSRZ outliers for the chain as percentile scores relative to all X-ray entries and entries of similar resolution. The OWAB column contains the minimum, median, 95th percentile and maximum values of the occupancy-weighted average B-factor per residue. The column labelled ‘Q< 0.9’ lists the number of (and percentage) of residues with an average occupancy less than 0.9.

Mol	Chain	Analysed	<RSRZ>	#RSRZ>2	OWAB(Å ²)	Q<0.9
1	A	202/233 (86%)	-0.20	3 (1%) 76 72	4, 13, 27, 39	0
1	B	203/233 (87%)	-0.11	6 (2%) 54 48	6, 13, 28, 34	0
1	C	203/233 (87%)	-0.25	2 (0%) 84 82	5, 12, 27, 35	0
1	D	203/233 (87%)	-0.21	4 (1%) 68 64	4, 12, 27, 33	0
All	All	811/932 (87%)	-0.19	15 (1%) 71 67	4, 12, 28, 39	0

The worst 5 of 15 RSRZ outliers are listed below:

Mol	Chain	Res	Type	RSRZ
1	D	143	PHE	3.4
1	D	21	LYS	3.3
1	B	21	LYS	3.0
1	C	111	ASP	2.8
1	A	142	ARG	2.8

6.2 Non-standard residues in protein, DNA, RNA chains [i](#)

There are no non-standard protein/DNA/RNA residues in this entry.

6.3 Carbohydrates [i](#)

There are no carbohydrates in this entry.

6.4 Ligands [i](#)

In the following table, the Atoms column lists the number of modelled atoms in the group and the number defined in the chemical component dictionary. LLDF column lists the quality of electron density of the group with respect to its neighbouring residues in protein, DNA or RNA chains. The B-factors column lists the minimum, median, 95th percentile and maximum values of B factors

of atoms in the group. The column labelled 'Q< 0.9' lists the number of atoms with occupancy less than 0.9.

Mol	Type	Chain	Res	Atoms	RSCC	RSR	LLDF	B-factors(\AA^2)	Q<0.9
2	BLA	A	1234	43/43	0.88	0.14	0.66	10,21,33,39	0
2	BLA	C	1234	43/43	0.92	0.13	0.49	12,21,31,33	0
2	BLA	D	1234	43/43	0.91	0.12	0.46	14,20,33,38	0
2	BLA	B	1234	43/43	0.88	0.14	0.29	14,23,35,40	0

6.5 Other polymers [i](#)

There are no such residues in this entry.