



Full wwPDB X-ray Structure Validation Report ⓘ

Feb 1, 2016 – 01:57 PM GMT

PDB ID : 3VMR
Title : Crystal structure of Staphylococcus aureus membrane-bound transglycosylase in complex with moenomycin
Authors : Huang, C.Y.; Shih, H.W.; Lin, L.Y.; Tien, Y.W.; Cheng, T.J.R.; Cheng, W.C.; Wong, C.H.; Ma, C.
Deposited on : 2011-12-15
Resolution : 3.69 Å(reported)

This is a Full wwPDB X-ray Structure Validation Report for a publicly released PDB entry.
We welcome your comments at validation@mail.wwpdb.org
A user guide is available at
<http://wwpdb.org/validation/2016/XrayValidationReportHelp>
with specific help available everywhere you see the ⓘ symbol.

The following versions of software and data (see [references ⓘ](#)) were used in the production of this report:

MolProbity : 4.02b-467
Mogul : 1.7 (RC4), CSD as536be (2015)
Xtriage (Phenix) : 1.9-1692
EDS : rb-20026688
Percentile statistics : 20151230.v01 (using entries in the PDB archive December 30th 2015)
Refmac : 5.8.0135
CCP4 : 6.5.0
Ideal geometry (proteins) : Engh & Huber (2001)
Ideal geometry (DNA, RNA) : Parkinson et al. (1996)
Validation Pipeline (wwPDB-VP) : trunk26865

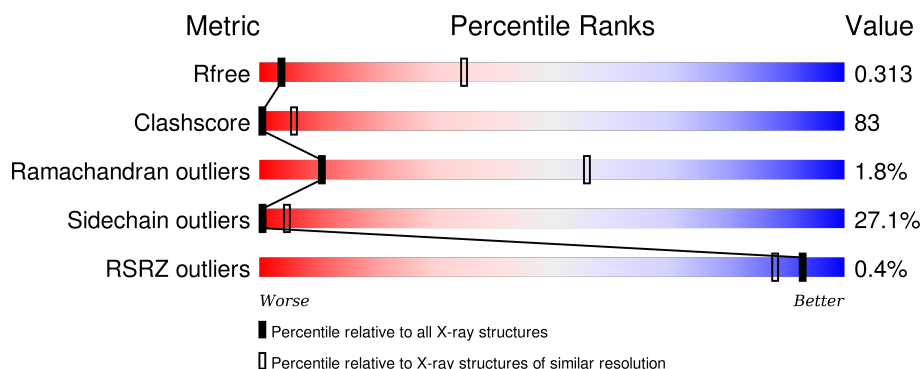
1 Overall quality at a glance

The following experimental techniques were used to determine the structure:

X-RAY DIFFRACTION

The reported resolution of this entry is 3.69 Å.

Percentile scores (ranging between 0-100) for global validation metrics of the entry are shown in the following graphic. The table shows the number of entries on which the scores are based.



Metric	Whole archive (#Entries)	Similar resolution (#Entries, resolution range(Å))
R_{free}	91344	1033 (3.86-3.50)
Clashscore	102246	1148 (3.86-3.50)
Ramachandran outliers	100387	1100 (3.86-3.50)
Sidechain outliers	100360	1098 (3.86-3.50)
RSRZ outliers	91569	1040 (3.86-3.50)

The table below summarises the geometric issues observed across the polymeric chains and their fit to the electron density. The red, orange, yellow and green segments on the lower bar indicate the fraction of residues that contain outliers for ≥ 3 , 2, 1 and 0 types of geometric quality criteria. A grey segment represents the fraction of residues that are not modelled. The numeric value for each fraction is indicated below the corresponding segment, with a dot representing fractions $\leq 5\%$. The upper red bar (where present) indicates the fraction of residues that have poor fit to the electron density. The numeric value is given above the bar.

Mol	Chain	Length	Quality of chain
1	A	263	<div> <div></div> <div>18%</div> <div>49%</div> <div>17%</div> <div>•</div> <div>14%</div> </div>

2 Entry composition

There are 2 unique types of molecules in this entry. The entry contains 1938 atoms, of which 0 are hydrogens and 0 are deuteriums.

In the tables below, the ZeroOcc column contains the number of atoms modelled with zero occupancy, the AltConf column contains the number of residues with at least one atom in alternate conformation and the Trace column contains the number of residues modelled with at most 2 atoms.

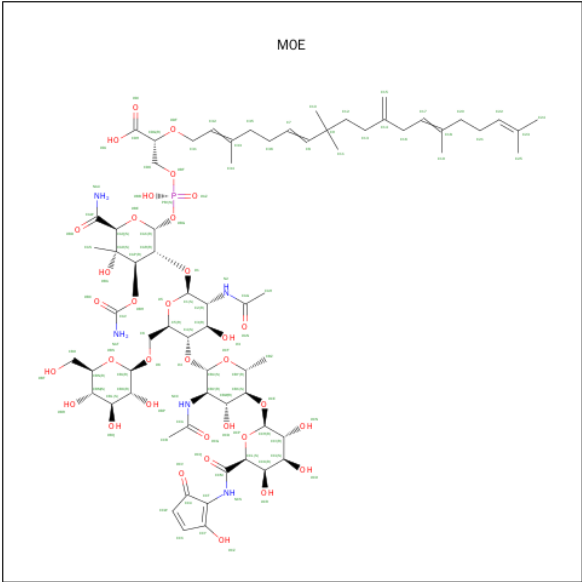
- Molecule 1 is a protein called Monofunctional glycosyltransferase.

Mol	Chain	Residues	Atoms					ZeroOcc	AltConf	Trace
1	A	227	Total	C	N	O	S	0	0	0
			1854	1174	319	354	7			

There are 21 discrepancies between the modelled and reference sequences:

Chain	Residue	Modelled	Actual	Comment	Reference
A	7	MET	-	EXPRESSION TAG	UNP Q99T05
A	8	GLY	-	EXPRESSION TAG	UNP Q99T05
A	9	SER	-	EXPRESSION TAG	UNP Q99T05
A	10	SER	-	EXPRESSION TAG	UNP Q99T05
A	11	HIS	-	EXPRESSION TAG	UNP Q99T05
A	12	HIS	-	EXPRESSION TAG	UNP Q99T05
A	13	HIS	-	EXPRESSION TAG	UNP Q99T05
A	14	HIS	-	EXPRESSION TAG	UNP Q99T05
A	15	HIS	-	EXPRESSION TAG	UNP Q99T05
A	16	HIS	-	EXPRESSION TAG	UNP Q99T05
A	17	SER	-	EXPRESSION TAG	UNP Q99T05
A	18	SER	-	EXPRESSION TAG	UNP Q99T05
A	19	GLY	-	EXPRESSION TAG	UNP Q99T05
A	20	LEU	-	EXPRESSION TAG	UNP Q99T05
A	21	VAL	-	EXPRESSION TAG	UNP Q99T05
A	22	PRO	-	EXPRESSION TAG	UNP Q99T05
A	23	ARG	-	EXPRESSION TAG	UNP Q99T05
A	24	GLY	-	EXPRESSION TAG	UNP Q99T05
A	25	SER	-	EXPRESSION TAG	UNP Q99T05
A	26	HIS	-	EXPRESSION TAG	UNP Q99T05
A	27	MET	-	EXPRESSION TAG	UNP Q99T05

- Molecule 2 is MOENOMYCIN (three-letter code: M0E) (formula: $C_{69}H_{106}N_5O_{34}P$).

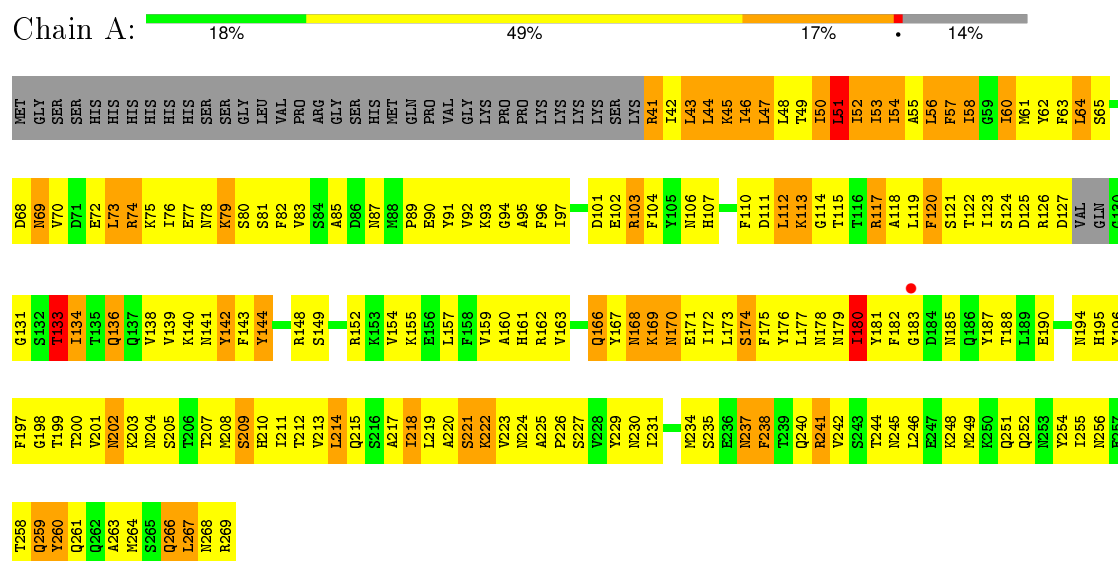


Mol	Chain	Residues	Atoms					ZeroOcc	AltConf
			Total	C	N	O	P		
2	A	1	84	44	5	34	1	0	0

3 Residue-property plots

These plots are drawn for all protein, RNA and DNA chains in the entry. The first graphic for a chain summarises the proportions of errors displayed in the second graphic. The second graphic shows the sequence view annotated by issues in geometry and electron density. Residues are color-coded according to the number of geometric quality criteria for which they contain at least one outlier: green = 0, yellow = 1, orange = 2 and red = 3 or more. A red dot above a residue indicates a poor fit to the electron density ($RSRZ > 2$). Stretches of 2 or more consecutive residues without any outlier are shown as a green connector. Residues present in the sample, but not in the model, are shown in grey.

- Molecule 1: Monofunctional glycosyltransferase



4 Data and refinement statistics

Property	Value	Source
Space group	P 21 21 2	Depositor
Cell constants a, b, c, α , β , γ	130.42Å 52.85Å 54.59Å 90.00° 90.00° 90.00°	Depositor
Resolution (Å)	28.60 – 3.69 28.60 – 3.69	Depositor EDS
% Data completeness (in resolution range)	91.5 (28.60-3.69) 98.7 (28.60-3.69)	Depositor EDS
R_{merge}	(Not available)	Depositor
R_{sym}	(Not available)	Depositor
$\langle I/\sigma(I) \rangle$ ¹	4.12 (at 3.65Å)	Xtriage
Refinement program	PHENIX (phenix.refine: 1.5_2)	Depositor
R, R_{free}	0.303 , 0.309 0.317 , 0.313	Depositor DCC
R_{free} test set	202 reflections (4.88%)	DCC
Wilson B-factor (Å ²)	153.1	Xtriage
Anisotropy	0.648	Xtriage
Bulk solvent k_{sol} (e/Å ³), B_{sol} (Å ²)	0.28 , 142.6	EDS
Estimated twinning fraction	0.025 for -h,l,k	Xtriage
L-test for twinning ²	$\langle L \rangle = 0.49$, $\langle L^2 \rangle = 0.33$	Xtriage
Outliers	0 of 4344 reflections	Xtriage
F_o, F_c correlation	0.93	EDS
Total number of atoms	1938	wwPDB-VP
Average B, all atoms (Å ²)	176.0	wwPDB-VP

Xtriage's analysis on translational NCS is as follows: *The largest off-origin peak in the Patterson function is 8.47% of the height of the origin peak. No significant pseudotranslation is detected.*

¹Intensities estimated from amplitudes.

²Theoretical values of $\langle |L| \rangle$, $\langle L^2 \rangle$ for acentric reflections are 0.5, 0.375 respectively for untwinned datasets, and 0.333, 0.2 for perfectly twinned datasets.

5 Model quality [i](#)

5.1 Standard geometry [i](#)

Bond lengths and bond angles in the following residue types are not validated in this section: M0E

The Z score for a bond length (or angle) is the number of standard deviations the observed value is removed from the expected value. A bond length (or angle) with $|Z| > 5$ is considered an outlier worth inspection. RMSZ is the root-mean-square of all Z scores of the bond lengths (or angles).

Mol	Chain	Bond lengths		Bond angles	
		RMSZ	$\# Z > 5$	RMSZ	$\# Z > 5$
1	A	0.31	0/1886	0.55	1/2542 (0.0%)

There are no bond length outliers.

All (1) bond angle outliers are listed below:

Mol	Chain	Res	Type	Atoms	Z	Observed($^{\circ}$)	Ideal($^{\circ}$)
1	A	51	LEU	CA-CB-CG	5.32	127.54	115.30

There are no chirality outliers.

There are no planarity outliers.

5.2 Too-close contacts [i](#)

In the following table, the Non-H and H(model) columns list the number of non-hydrogen atoms and hydrogen atoms in the chain respectively. The H(added) column lists the number of hydrogen atoms added and optimized by MolProbity. The Clashes column lists the number of clashes within the asymmetric unit, whereas Symm-Clashes lists symmetry related clashes.

Mol	Chain	Non-H	H(model)	H(added)	Clashes	Symm-Clashes
1	A	1854	0	1828	310	0
2	A	84	0	63	18	0
All	All	1938	0	1891	317	0

The all-atom clashscore is defined as the number of clashes found per 1000 atoms (including hydrogen atoms). The all-atom clashscore for this structure is 83.

All (317) close contacts within the same asymmetric unit are listed below, sorted by their clash magnitude.

Atom-1	Atom-2	Interatomic distance (Å)	Clash overlap (Å)
1:A:218:ILE:H	1:A:218:ILE:HD12	1.13	1.08
1:A:218:ILE:CD1	1:A:218:ILE:H	1.69	1.04
1:A:180:ILE:HB	1:A:222:LYS:HZ1	1.23	1.02
1:A:141:ASN:HD21	2:A:901:M0E:HAH1	1.27	1.00
1:A:212:THR:N	1:A:215:GLN:HE21	1.58	1.00
1:A:212:THR:H	1:A:215:GLN:NE2	1.61	0.99
1:A:172:ILE:HD12	1:A:173:LEU:H	1.28	0.97
1:A:224:ASN:ND2	2:A:901:M0E:HAR	1.79	0.97
1:A:218:ILE:HD12	1:A:218:ILE:N	1.85	0.91
2:A:901:M0E:HAH2	2:A:901:M0E:HAT2	1.35	0.90
1:A:51:LEU:HA	1:A:54:ILE:HG23	1.56	0.88
1:A:72:GLU:HB3	1:A:142:TYR:CZ	2.10	0.87
1:A:48:LEU:HA	1:A:51:LEU:HD13	1.54	0.86
1:A:199:THR:HG22	1:A:209:SER:HB3	1.60	0.83
1:A:180:ILE:O	1:A:187:TYR:HA	1.78	0.83
1:A:220:ALA:HB3	1:A:245:ASN:ND2	1.91	0.83
1:A:52:ILE:O	1:A:56:LEU:HD13	1.78	0.83
1:A:212:THR:H	1:A:215:GLN:HE21	0.86	0.82
1:A:207:THR:HG23	1:A:208:MET:N	1.94	0.82
1:A:55:ALA:O	1:A:58:ILE:HG13	1.79	0.81
1:A:172:ILE:HA	1:A:175:PHE:CD2	2.16	0.81
1:A:172:ILE:HD12	1:A:173:LEU:N	1.93	0.81
1:A:200:THR:HG21	1:A:205:SER:HB3	1.61	0.80
1:A:42:ILE:O	1:A:45:LYS:HG3	1.81	0.80
1:A:207:THR:HG23	1:A:208:MET:H	1.44	0.80
1:A:133:THR:HG23	1:A:136:GLN:NE2	1.95	0.80
1:A:149:SER:HB3	1:A:152:ARG:HG2	1.64	0.79
1:A:260:TYR:O	1:A:264:MET:HG2	1.83	0.79
1:A:77:GLU:HA	1:A:82:PHE:CZ	2.17	0.79
1:A:48:LEU:HA	1:A:51:LEU:CD1	2.12	0.78
1:A:224:ASN:HD21	2:A:901:M0E:HAR	1.45	0.78
1:A:46:ILE:O	1:A:50:ILE:HG22	1.86	0.76
1:A:172:ILE:HA	1:A:175:PHE:HD2	1.51	0.76
1:A:237:ASN:O	1:A:241:ARG:HD2	1.85	0.76
1:A:248:LYS:HA	1:A:251:GLN:HB3	1.68	0.75
1:A:219:LEU:O	1:A:222:LYS:HG3	1.86	0.75
1:A:48:LEU:O	1:A:52:ILE:HG22	1.86	0.74
1:A:168:ASN:O	1:A:172:ILE:HG13	1.88	0.74
1:A:169:LYS:HA	1:A:172:ILE:HD11	1.69	0.74
1:A:237:ASN:O	1:A:240:GLN:HB3	1.88	0.74
1:A:121:SER:HA	1:A:124:SER:OG	1.88	0.73
1:A:87:ASN:HA	1:A:203:LYS:HE2	1.70	0.73

Continued on next page...

Continued from previous page...

Atom-1	Atom-2	Interatomic distance (Å)	Clash overlap (Å)
1:A:47:LEU:HD13	1:A:48:LEU:N	2.05	0.72
1:A:73:LEU:HG	1:A:175:PHE:CG	2.25	0.71
1:A:41:ARG:HH12	1:A:42:ILE:HG13	1.55	0.70
1:A:222:LYS:HA	1:A:225:ALA:HB3	1.71	0.70
1:A:173:LEU:O	1:A:176:TYR:HB3	1.90	0.70
1:A:53:ILE:O	1:A:56:LEU:HD22	1.92	0.70
1:A:266:GLN:HA	1:A:269:ARG:CZ	2.21	0.70
1:A:72:GLU:HB3	1:A:142:TYR:CE2	2.27	0.69
1:A:79:LYS:HE2	1:A:80:SER:H	1.57	0.68
1:A:70:VAL:HG11	1:A:166:GLN:NE2	2.09	0.68
1:A:51:LEU:HD22	1:A:52:ILE:N	2.09	0.68
1:A:159:VAL:HA	1:A:162:ARG:HD3	1.76	0.68
1:A:79:LYS:CE	1:A:80:SER:H	2.07	0.67
1:A:176:TYR:HD2	1:A:177:LEU:HD22	1.58	0.67
1:A:49:THR:O	1:A:53:ILE:HG22	1.95	0.67
1:A:220:ALA:HB3	1:A:245:ASN:HD21	1.57	0.67
1:A:142:TYR:C	1:A:142:TYR:HD1	1.99	0.66
1:A:252:GLN:HB2	1:A:254:TYR:CE2	2.31	0.66
1:A:50:ILE:HA	1:A:53:ILE:HG22	1.78	0.66
1:A:229:TYR:HB3	1:A:238:PHE:CE2	2.30	0.66
1:A:60:ILE:O	1:A:63:PHE:HB2	1.95	0.66
1:A:133:THR:HG23	1:A:136:GLN:HE21	1.60	0.66
1:A:214:LEU:HD13	1:A:214:LEU:H	1.62	0.65
1:A:140:LYS:NZ	1:A:148:ARG:HH21	1.95	0.65
1:A:72:GLU:HB3	1:A:142:TYR:OH	1.96	0.65
1:A:133:THR:OG1	1:A:134:ILE:N	2.29	0.65
1:A:76:ILE:O	1:A:82:PHE:CE1	2.50	0.65
1:A:197:PHE:HD2	1:A:199:THR:CG2	2.10	0.65
1:A:121:SER:HB2	1:A:125:ASP:OD2	1.96	0.64
1:A:79:LYS:HE3	1:A:79:LYS:HA	1.80	0.64
1:A:141:ASN:ND2	2:A:901:M0E:HAH1	2.06	0.64
1:A:202:ASN:ND2	1:A:204:ASN:H	1.96	0.64
1:A:224:ASN:ND2	2:A:901:M0E:HAS3	2.12	0.64
1:A:70:VAL:HG22	1:A:167:TYR:HE2	1.63	0.64
2:A:901:M0E:CAH	2:A:901:M0E:HAT2	2.11	0.64
1:A:142:TYR:C	1:A:142:TYR:CD1	2.71	0.64
1:A:74:ARG:NE	1:A:167:TYR:HE1	1.95	0.64
1:A:104:PHE:HZ	1:A:172:ILE:CD1	2.10	0.64
1:A:199:THR:HG22	1:A:209:SER:CB	2.29	0.63
1:A:208:MET:O	1:A:209:SER:O	2.15	0.63
1:A:267:LEU:HD12	1:A:268:ASN:H	1.62	0.63

Continued on next page...

Continued from previous page...

Atom-1	Atom-2	Interatomic distance (Å)	Clash overlap (Å)
2:A:901:M0E:HAH2	2:A:901:M0E:NAT	2.12	0.63
1:A:179:ASN:O	1:A:180:ILE:HG23	1.99	0.63
1:A:73:LEU:HG	1:A:175:PHE:CD2	2.34	0.63
1:A:178:ASN:HA	1:A:188:THR:HA	1.80	0.63
1:A:197:PHE:O	1:A:199:THR:HG23	1.98	0.62
1:A:89:PRO:HB2	1:A:92:VAL:HG23	1.82	0.62
1:A:96:PHE:CZ	1:A:219:LEU:HB2	2.34	0.62
1:A:112:LEU:HD13	1:A:113:LYS:N	2.14	0.62
1:A:42:ILE:H	1:A:42:ILE:HD12	1.65	0.62
1:A:214:LEU:H	1:A:214:LEU:CD1	2.14	0.61
1:A:134:ILE:N	1:A:136:GLN:HE22	1.99	0.61
1:A:199:THR:HA	1:A:208:MET:O	2.01	0.60
1:A:200:THR:CG2	1:A:205:SER:HB3	2.32	0.60
1:A:266:GLN:CD	1:A:266:GLN:N	2.54	0.60
1:A:201:VAL:HG12	1:A:211:ILE:HD13	1.83	0.60
1:A:138:VAL:HG22	1:A:176:TYR:HA	1.83	0.60
1:A:180:ILE:HB	1:A:222:LYS:NZ	2.07	0.59
1:A:211:ILE:HA	1:A:215:GLN:NE2	2.18	0.59
1:A:252:GLN:HB2	1:A:254:TYR:HE2	1.68	0.59
1:A:91:TYR:OH	1:A:211:ILE:HG23	2.02	0.59
1:A:221:SER:OG	1:A:242:VAL:HG12	2.03	0.59
1:A:168:ASN:ND2	1:A:171:GLU:H	2.01	0.59
1:A:182:PHE:HA	1:A:222:LYS:HD3	1.85	0.59
1:A:222:LYS:HE3	1:A:223:VAL:HA	1.83	0.59
1:A:113:LYS:HD3	1:A:114:GLY:H	1.68	0.59
1:A:69:ASN:H	1:A:69:ASN:ND2	2.01	0.59
1:A:72:GLU:O	1:A:75:LYS:N	2.36	0.59
1:A:140:LYS:HZ1	2:A:901:M0E:HDK2	1.68	0.58
1:A:74:ARG:HE	1:A:167:TYR:HE1	1.51	0.58
1:A:95:ALA:O	1:A:220:ALA:HB2	2.03	0.58
1:A:212:THR:O	1:A:215:GLN:HG2	2.03	0.58
1:A:65:SER:HB2	1:A:162:ARG:NH2	2.19	0.58
1:A:224:ASN:HD22	2:A:901:M0E:HAS3	1.70	0.57
1:A:54:ILE:O	1:A:58:ILE:HG12	2.05	0.57
1:A:214:LEU:HG	1:A:266:GLN:HG2	1.86	0.57
1:A:200:THR:HG21	1:A:205:SER:CB	2.34	0.57
1:A:118:ALA:HB2	1:A:131:GLY:HA3	1.86	0.57
1:A:207:THR:HG23	1:A:208:MET:HG3	1.85	0.57
1:A:267:LEU:HD13	1:A:268:ASN:ND2	2.19	0.57
1:A:47:LEU:O	1:A:50:ILE:HG23	2.05	0.57
1:A:57:PHE:O	1:A:60:ILE:HG13	2.04	0.56

Continued on next page...

Continued from previous page...

Atom-1	Atom-2	Interatomic distance (Å)	Clash overlap (Å)
1:A:49:THR:HA	1:A:52:ILE:CG2	2.35	0.56
1:A:142:TYR:HD1	1:A:142:TYR:O	1.87	0.56
1:A:196:TYR:CE1	1:A:231:ILE:HD12	2.41	0.56
1:A:50:ILE:HA	1:A:53:ILE:CG2	2.35	0.56
1:A:51:LEU:HA	1:A:54:ILE:CG2	2.32	0.56
1:A:54:ILE:HG13	1:A:55:ALA:N	2.20	0.56
1:A:235:SER:OG	1:A:238:PHE:HB2	2.06	0.56
1:A:133:THR:C	1:A:136:GLN:HE22	2.09	0.55
1:A:182:PHE:CE1	1:A:222:LYS:HE2	2.41	0.55
1:A:93:LYS:O	1:A:97:ILE:HG13	2.06	0.55
1:A:180:ILE:HG13	1:A:182:PHE:CE2	2.41	0.55
1:A:207:THR:CG2	1:A:208:MET:H	2.14	0.55
1:A:51:LEU:C	1:A:51:LEU:HD22	2.27	0.55
1:A:169:LYS:CA	1:A:172:ILE:HD11	2.35	0.55
2:A:901:M0E:H62	2:A:901:M0E:HBU	1.88	0.54
1:A:118:ALA:O	1:A:122:THR:HG23	2.07	0.54
1:A:180:ILE:CB	1:A:222:LYS:HZ1	2.08	0.54
1:A:44:LEU:O	1:A:47:LEU:HD12	2.06	0.54
1:A:74:ARG:HA	1:A:77:GLU:HB3	1.90	0.54
1:A:51:LEU:CA	1:A:54:ILE:HG23	2.31	0.54
1:A:261:GLN:HA	1:A:264:MET:HB2	1.89	0.54
1:A:72:GLU:CB	1:A:142:TYR:CZ	2.88	0.54
1:A:104:PHE:HA	1:A:107:HIS:CD2	2.43	0.54
1:A:47:LEU:HD22	1:A:47:LEU:O	2.08	0.54
1:A:64:LEU:HD12	1:A:155:LYS:HE3	1.90	0.54
1:A:234:MET:N	1:A:234:MET:SD	2.81	0.54
1:A:45:LYS:HD3	1:A:46:ILE:N	2.23	0.53
1:A:223:VAL:HG12	2:A:901:M0E:NAT	2.24	0.53
1:A:43:LEU:CD2	1:A:44:LEU:HD23	2.38	0.53
1:A:260:TYR:CE2	1:A:261:GLN:HG3	2.45	0.52
1:A:215:GLN:C	1:A:218:ILE:HD13	2.29	0.52
1:A:267:LEU:HD12	1:A:268:ASN:N	2.22	0.52
1:A:134:ILE:HG22	1:A:176:TYR:CD1	2.44	0.52
1:A:50:ILE:CA	1:A:53:ILE:HG22	2.38	0.52
1:A:225:ALA:N	1:A:226:PRO:HD2	2.25	0.52
1:A:85:ALA:HB3	1:A:170:ASN:ND2	2.25	0.52
1:A:202:ASN:OD1	1:A:204:ASN:HB2	2.09	0.52
2:A:901:M0E:OCQ	2:A:901:M0E:OCV	2.28	0.52
1:A:68:ASP:O	1:A:162:ARG:NH1	2.43	0.52
1:A:255:ILE:HB	1:A:259:GLN:HG3	1.91	0.52
1:A:163:VAL:O	1:A:167:TYR:N	2.43	0.52

Continued on next page...

Continued from previous page...

Atom-1	Atom-2	Interatomic distance (Å)	Clash overlap (Å)
1:A:222:LYS:C	1:A:222:LYS:HD2	2.30	0.52
1:A:202:ASN:HB3	1:A:205:SER:HB2	1.91	0.51
1:A:200:THR:HG22	1:A:209:SER:O	2.10	0.51
1:A:102:GLU:HG3	1:A:252:GLN:CD	2.31	0.51
1:A:143:PHE:HB3	1:A:144:TYR:CE2	2.44	0.51
1:A:115:THR:O	1:A:118:ALA:HB3	2.10	0.51
1:A:190:GLU:OE1	1:A:190:GLU:HA	2.10	0.51
1:A:79:LYS:HB3	1:A:82:PHE:HD1	1.76	0.51
1:A:197:PHE:HD2	1:A:199:THR:HG21	1.74	0.51
1:A:74:ARG:NE	1:A:167:TYR:CE1	2.77	0.51
1:A:222:LYS:HA	1:A:225:ALA:CB	2.41	0.51
1:A:52:ILE:O	1:A:55:ALA:HB3	2.10	0.51
1:A:212:THR:N	1:A:215:GLN:NE2	2.37	0.51
1:A:181:TYR:HD1	1:A:187:TYR:CE1	2.28	0.51
1:A:177:LEU:HA	1:A:180:ILE:HD11	1.93	0.50
1:A:266:GLN:NE2	1:A:267:LEU:N	2.59	0.50
1:A:214:LEU:N	1:A:214:LEU:HD13	2.26	0.50
1:A:266:GLN:CD	1:A:266:GLN:H	2.15	0.50
1:A:196:TYR:HE1	1:A:231:ILE:HD12	1.77	0.50
1:A:214:LEU:O	1:A:218:ILE:HD11	2.11	0.50
1:A:264:MET:C	1:A:267:LEU:HD11	2.31	0.50
1:A:136:GLN:H	1:A:136:GLN:NE2	2.10	0.50
1:A:169:LYS:HD3	1:A:169:LYS:N	2.27	0.49
1:A:46:ILE:HA	1:A:49:THR:HG22	1.93	0.49
1:A:217:ALA:HA	1:A:245:ASN:ND2	2.26	0.49
1:A:267:LEU:CD1	1:A:268:ASN:N	2.75	0.49
1:A:107:HIS:CE1	1:A:133:THR:HG21	2.47	0.49
1:A:199:THR:HB	1:A:209:SER:O	2.12	0.49
1:A:264:MET:O	1:A:267:LEU:HD11	2.13	0.49
1:A:229:TYR:HB3	1:A:238:PHE:CZ	2.47	0.49
1:A:214:LEU:HB3	1:A:263:ALA:HA	1.95	0.49
1:A:168:ASN:O	1:A:171:GLU:HG2	2.13	0.49
1:A:125:ASP:O	1:A:126:ARG:HB2	2.13	0.49
1:A:169:LYS:CD	1:A:169:LYS:N	2.75	0.49
1:A:48:LEU:CA	1:A:51:LEU:HD13	2.35	0.49
1:A:50:ILE:O	1:A:53:ILE:HG22	2.13	0.49
1:A:222:LYS:O	1:A:226:PRO:HD2	2.13	0.48
1:A:48:LEU:HD13	1:A:52:ILE:HG21	1.95	0.48
1:A:197:PHE:CE1	1:A:215:GLN:HB3	2.48	0.48
1:A:260:TYR:CZ	1:A:261:GLN:HG3	2.48	0.48
1:A:237:ASN:N	1:A:237:ASN:OD1	2.45	0.48

Continued on next page...

Continued from previous page...

Atom-1	Atom-2	Interatomic distance (Å)	Clash overlap (Å)
1:A:43:LEU:HD22	1:A:44:LEU:N	2.29	0.48
1:A:223:VAL:HG12	2:A:901:M0E:HAT1	1.79	0.48
1:A:50:ILE:O	1:A:53:ILE:CG2	2.61	0.48
1:A:50:ILE:O	1:A:54:ILE:HG23	2.13	0.48
1:A:197:PHE:CD2	1:A:199:THR:HG21	2.47	0.48
1:A:102:GLU:HG2	1:A:103:ARG:HG3	1.95	0.48
1:A:45:LYS:HB2	1:A:45:LYS:HE2	1.58	0.47
1:A:143:PHE:CE1	1:A:159:VAL:HG11	2.49	0.47
1:A:118:ALA:CB	1:A:131:GLY:HA3	2.45	0.47
1:A:121:SER:O	1:A:125:ASP:N	2.48	0.47
1:A:48:LEU:C	1:A:52:ILE:HG22	2.34	0.47
1:A:49:THR:O	1:A:52:ILE:HG23	2.15	0.47
1:A:101:ASP:HB3	1:A:104:PHE:HB2	1.97	0.47
1:A:168:ASN:OD1	1:A:170:ASN:HB3	2.15	0.47
1:A:53:ILE:HG12	1:A:53:ILE:O	2.15	0.47
1:A:50:ILE:HD13	1:A:51:LEU:N	2.30	0.46
1:A:112:LEU:C	1:A:112:LEU:HD22	2.35	0.46
1:A:263:ALA:O	1:A:267:LEU:HG	2.15	0.46
1:A:248:LYS:O	1:A:252:GLN:N	2.39	0.46
1:A:49:THR:HA	1:A:52:ILE:HG23	1.98	0.46
1:A:220:ALA:CB	1:A:245:ASN:HD21	2.26	0.46
1:A:142:TYR:CE1	1:A:143:PHE:CE2	3.04	0.46
1:A:101:ASP:OD1	1:A:103:ARG:C	2.54	0.46
1:A:230:ASN:O	1:A:238:PHE:HE2	1.99	0.46
1:A:72:GLU:CB	1:A:142:TYR:OH	2.63	0.46
1:A:213:VAL:C	1:A:215:GLN:H	2.19	0.46
1:A:136:GLN:N	1:A:136:GLN:NE2	2.64	0.46
1:A:47:LEU:HD22	1:A:47:LEU:C	2.35	0.46
1:A:123:ILE:HD12	1:A:124:SER:N	2.30	0.46
1:A:125:ASP:HB3	1:A:127:ASP:OD2	2.16	0.46
1:A:142:TYR:CD1	1:A:143:PHE:CD2	3.04	0.46
1:A:238:PHE:O	1:A:241:ARG:HG2	2.15	0.46
1:A:74:ARG:O	1:A:77:GLU:HB3	2.16	0.46
1:A:136:GLN:N	1:A:136:GLN:CD	2.70	0.45
1:A:197:PHE:CD2	1:A:199:THR:CG2	2.96	0.45
1:A:141:ASN:HD21	2:A:901:M0E:CAH	2.14	0.45
1:A:249:MET:O	1:A:254:TYR:N	2.49	0.45
1:A:43:LEU:HD21	1:A:44:LEU:HD23	1.98	0.45
1:A:214:LEU:HG	1:A:266:GLN:NE2	2.32	0.45
1:A:148:ARG:NE	2:A:901:M0E:HDK1	2.31	0.45
1:A:73:LEU:HD12	1:A:73:LEU:HA	1.58	0.45

Continued on next page...

Continued from previous page...

Atom-1	Atom-2	Interatomic distance (Å)	Clash overlap (Å)
1:A:51:LEU:C	1:A:51:LEU:CD2	2.85	0.45
1:A:104:PHE:HZ	1:A:172:ILE:HD13	1.79	0.45
1:A:226:PRO:HA	1:A:227:SER:HA	1.57	0.45
1:A:166:GLN:HG2	1:A:167:TYR:CE2	2.52	0.45
1:A:207:THR:CG2	1:A:208:MET:N	2.64	0.45
1:A:96:PHE:HZ	1:A:219:LEU:HB2	1.79	0.45
1:A:110:PHE:CZ	1:A:112:LEU:HA	2.52	0.45
1:A:64:LEU:CD1	1:A:155:LYS:HE3	2.47	0.45
1:A:176:TYR:CD2	1:A:177:LEU:HD22	2.43	0.44
1:A:112:LEU:HD22	1:A:112:LEU:O	2.17	0.44
1:A:194:ASN:HA	1:A:198:GLY:HA2	2.00	0.44
1:A:101:ASP:OD2	1:A:107:HIS:CD2	2.71	0.44
1:A:73:LEU:HA	1:A:76:ILE:HG22	1.98	0.44
1:A:140:LYS:HZ1	1:A:148:ARG:HH21	1.60	0.44
1:A:106:ASN:N	1:A:106:ASN:HD22	2.15	0.44
1:A:74:ARG:CA	1:A:77:GLU:HB3	2.47	0.44
1:A:41:ARG:NH1	1:A:42:ILE:HG13	2.28	0.44
1:A:266:GLN:OE1	1:A:266:GLN:N	2.50	0.43
1:A:92:VAL:O	1:A:95:ALA:HB3	2.18	0.43
1:A:48:LEU:HD13	1:A:52:ILE:CG2	2.48	0.43
1:A:51:LEU:O	1:A:55:ALA:N	2.43	0.43
1:A:171:GLU:HA	1:A:174:SER:HG	1.83	0.43
1:A:169:LYS:C	1:A:172:ILE:HD11	2.39	0.43
1:A:90:GLU:OE1	1:A:93:LYS:HD3	2.18	0.43
1:A:104:PHE:HZ	1:A:172:ILE:HD11	1.80	0.43
1:A:157:LEU:O	1:A:160:ALA:HB3	2.18	0.43
1:A:256:ASN:C	1:A:256:ASN:OD1	2.56	0.43
1:A:65:SER:HB2	1:A:162:ARG:HH21	1.82	0.43
1:A:171:GLU:HA	1:A:174:SER:OG	2.19	0.43
1:A:68:ASP:HB3	1:A:143:PHE:CZ	2.53	0.43
1:A:196:TYR:HD1	1:A:231:ILE:HG21	1.83	0.43
1:A:171:GLU:HB2	1:A:175:PHE:CZ	2.54	0.43
1:A:196:TYR:CE1	1:A:231:ILE:HB	2.54	0.43
1:A:205:SER:OG	1:A:207:THR:HG22	2.19	0.43
1:A:180:ILE:O	1:A:187:TYR:CA	2.59	0.43
1:A:242:VAL:HA	1:A:245:ASN:HB3	1.99	0.43
1:A:139:VAL:HG13	1:A:159:VAL:HG11	2.01	0.42
1:A:111:ASP:OD1	1:A:114:GLY:HA3	2.18	0.42
1:A:117:ARG:O	1:A:120:PHE:HD1	2.01	0.42
1:A:104:PHE:HA	1:A:107:HIS:NE2	2.34	0.42
1:A:168:ASN:CG	1:A:170:ASN:H	2.22	0.42

Continued on next page...

Continued from previous page...

Atom-1	Atom-2	Interatomic distance (Å)	Clash overlap (Å)
1:A:79:LYS:HG3	1:A:80:SER:N	2.33	0.42
1:A:217:ALA:HB2	1:A:246:LEU:CD2	2.50	0.42
1:A:81:SER:O	1:A:188:THR:HG21	2.19	0.42
1:A:41:ARG:HG2	1:A:41:ARG:O	2.20	0.42
1:A:241:ARG:HE	1:A:241:ARG:HB3	1.49	0.42
1:A:113:LYS:HD3	1:A:114:GLY:N	2.34	0.42
1:A:70:VAL:HG11	1:A:166:GLN:CD	2.39	0.42
1:A:169:LYS:HA	1:A:172:ILE:CD1	2.43	0.41
1:A:101:ASP:OD2	1:A:107:HIS:NE2	2.53	0.41
2:A:901:M0E:OCD	2:A:901:M0E:OCP	2.29	0.41
1:A:196:TYR:CD2	1:A:196:TYR:N	2.88	0.41
1:A:94:GLY:HA2	1:A:97:ILE:HB	2.03	0.41
1:A:139:VAL:HG11	1:A:159:VAL:HB	2.02	0.41
1:A:143:PHE:HB3	1:A:144:TYR:CZ	2.56	0.41
1:A:241:ARG:O	1:A:244:THR:N	2.54	0.41
1:A:50:ILE:O	1:A:54:ILE:CG2	2.69	0.41
1:A:61:MET:HG2	1:A:154:VAL:CG2	2.50	0.41
1:A:166:GLN:HB2	1:A:166:GLN:HE21	1.73	0.41
1:A:95:ALA:HA	1:A:249:MET:SD	2.60	0.41
1:A:149:SER:HB3	1:A:152:ARG:CG	2.43	0.40
1:A:140:LYS:HZ1	1:A:148:ARG:NH2	2.19	0.40
2:A:901:M0E:HBL	2:A:901:M0E:OBB	2.22	0.40
1:A:115:THR:O	1:A:119:LEU:HD23	2.21	0.40
1:A:211:ILE:HG13	1:A:212:THR:N	2.36	0.40
1:A:181:TYR:CD2	1:A:226:PRO:HG3	2.56	0.40
1:A:181:TYR:HD2	1:A:226:PRO:HG3	1.85	0.40
1:A:69:ASN:N	1:A:69:ASN:ND2	2.66	0.40
1:A:222:LYS:O	1:A:224:ASN:N	2.54	0.40
1:A:104:PHE:CD1	1:A:134:ILE:HG13	2.56	0.40

There are no symmetry-related clashes.

5.3 Torsion angles ⓘ

5.3.1 Protein backbone ⓘ

In the following table, the Percentiles column shows the percent Ramachandran outliers of the chain as a percentile score with respect to all X-ray entries followed by that with respect to entries of similar resolution.

The Analysed column shows the number of residues for which the backbone conformation was analysed, and the total number of residues.

Mol	Chain	Analysed	Favoured	Allowed	Outliers	Percentiles	
1	A	223/263 (85%)	189 (85%)	30 (14%)	4 (2%)	11	56

All (4) Ramachandran outliers are listed below:

Mol	Chain	Res	Type
1	A	133	THR
1	A	209	SER
1	A	183	GLY
1	A	180	ILE

5.3.2 Protein sidechains ⓘ

In the following table, the Percentiles column shows the percent sidechain outliers of the chain as a percentile score with respect to all X-ray entries followed by that with respect to entries of similar resolution.

The Analysed column shows the number of residues for which the sidechain conformation was analysed, and the total number of residues.

Mol	Chain	Analysed	Rotameric	Outliers	Percentiles	
1	A	207/239 (87%)	151 (73%)	56 (27%)	0	5

All (56) residues with a non-rotameric sidechain are listed below:

Mol	Chain	Res	Type
1	A	41	ARG
1	A	43	LEU
1	A	44	LEU
1	A	45	LYS
1	A	46	ILE
1	A	47	LEU
1	A	50	ILE
1	A	51	LEU
1	A	52	ILE
1	A	53	ILE
1	A	54	ILE
1	A	56	LEU
1	A	57	PHE
1	A	58	ILE
1	A	60	ILE
1	A	62	TYR
1	A	64	LEU

Continued on next page...

Continued from previous page...

Mol	Chain	Res	Type
1	A	69	ASN
1	A	73	LEU
1	A	74	ARG
1	A	78	ASN
1	A	79	LYS
1	A	83	VAL
1	A	103	ARG
1	A	112	LEU
1	A	113	LYS
1	A	117	ARG
1	A	120	PHE
1	A	133	THR
1	A	134	ILE
1	A	136	GLN
1	A	142	TYR
1	A	144	TYR
1	A	161	HIS
1	A	166	GLN
1	A	168	ASN
1	A	169	LYS
1	A	170	ASN
1	A	174	SER
1	A	180	ILE
1	A	185	ASN
1	A	195	HIS
1	A	202	ASN
1	A	210	HIS
1	A	214	LEU
1	A	218	ILE
1	A	221	SER
1	A	222	LYS
1	A	237	ASN
1	A	238	PHE
1	A	241	ARG
1	A	258	THR
1	A	259	GLN
1	A	260	TYR
1	A	266	GLN
1	A	267	LEU

Some sidechains can be flipped to improve hydrogen bonding and reduce clashes. All (15) such sidechains are listed below:

Mol	Chain	Res	Type
1	A	69	ASN
1	A	87	ASN
1	A	106	ASN
1	A	136	GLN
1	A	141	ASN
1	A	166	GLN
1	A	179	ASN
1	A	202	ASN
1	A	204	ASN
1	A	215	GLN
1	A	224	ASN
1	A	230	ASN
1	A	245	ASN
1	A	262	GLN
1	A	268	ASN

5.3.3 RNA ⓘ

There are no RNA molecules in this entry.

5.4 Non-standard residues in protein, DNA, RNA chains ⓘ

There are no non-standard protein/DNA/RNA residues in this entry.

5.5 Carbohydrates ⓘ

There are no carbohydrates in this entry.

5.6 Ligand geometry ⓘ

1 ligand is modelled in this entry.

In the following table, the Counts columns list the number of bonds (or angles) for which Mogul statistics could be retrieved, the number of bonds (or angles) that are observed in the model and the number of bonds (or angles) that are defined in the chemical component dictionary. The Link column lists molecule types, if any, to which the group is linked. The Z score for a bond length (or angle) is the number of standard deviations the observed value is removed from the expected value. A bond length (or angle) with $|Z| > 2$ is considered an outlier worth inspection. RMSZ is the root-mean-square of all Z scores of the bond lengths (or angles).

Mol	Type	Chain	Res	Link	Bond lengths			Bond angles		
					Counts	RMSZ	# Z > 2	Counts	RMSZ	# Z > 2
2	M0E	A	901	-	81,89,114	2.53	27 (33%)	101,134,166	2.81	57 (56%)

In the following table, the Chirals column lists the number of chiral outliers, the number of chiral centers analysed, the number of these observed in the model and the number defined in the chemical component dictionary. Similar counts are reported in the Torsion and Rings columns. '-' means no outliers of that kind were identified.

Mol	Type	Chain	Res	Link	Chirals	Torsions	Rings
2	M0E	A	901	-	-	0/52/175/206	0/6/6/6

All (27) bond length outliers are listed below:

Mol	Chain	Res	Type	Atoms	Z	Observed(Å)	Ideal(Å)
2	A	901	M0E	CCT-CCU	-4.28	1.41	1.50
2	A	901	M0E	OBH-CAP	-3.27	1.39	1.45
2	A	901	M0E	OBA-CAO	-2.28	1.40	1.44
2	A	901	M0E	OCD-CBW	-2.02	1.38	1.43
2	A	901	M0E	CCT-NCS	2.01	1.46	1.41
2	A	901	M0E	CAX-CAR	2.25	1.58	1.52
2	A	901	M0E	CBW-CBX	2.26	1.58	1.52
2	A	901	M0E	O5-C1	2.33	1.47	1.41
2	A	901	M0E	CCK-CCJ	2.49	1.58	1.52
2	A	901	M0E	O4-CBU	2.60	1.48	1.41
2	A	901	M0E	OCP-CCL	2.79	1.48	1.43
2	A	901	M0E	CAG-N2	2.83	1.45	1.34
2	A	901	M0E	OBC-CAV	2.85	1.26	1.21
2	A	901	M0E	CBL-CBM	2.97	1.60	1.52
2	A	901	M0E	CCA-NCC	3.19	1.46	1.34
2	A	901	M0E	CBK-CBL	3.45	1.61	1.52
2	A	901	M0E	C1-C2	3.53	1.59	1.53
2	A	901	M0E	CAO-CAP	3.66	1.59	1.53
2	A	901	M0E	CAR-CAP	3.72	1.60	1.52
2	A	901	M0E	CCK-CCL	5.18	1.62	1.53
2	A	901	M0E	CAV-NAT	5.44	1.45	1.33
2	A	901	M0E	CBU-CBV	5.53	1.62	1.53
2	A	901	M0E	CCM-NCS	5.68	1.46	1.36
2	A	901	M0E	CBW-CBV	5.70	1.64	1.53
2	A	901	M0E	OCV-CCU	5.92	1.40	1.24
2	A	901	M0E	CAW-NAU	6.99	1.46	1.32
2	A	901	M0E	CCX-CCW	7.53	1.52	1.35

All (57) bond angle outliers are listed below:

Mol	Chain	Res	Type	Atoms	Z	Observed(°)	Ideal(°)
2	A	901	M0E	CAS-CAO-CAP	-8.14	103.53	111.71
2	A	901	M0E	OBA-CAO-CAP	-4.03	98.52	108.11
2	A	901	M0E	CBK-CBL-CBM	-3.42	104.42	110.79
2	A	901	M0E	CBU-OCF-CBY	-3.39	107.85	113.64
2	A	901	M0E	OBC-CAV-NAT	-2.91	119.76	125.34
2	A	901	M0E	C3-C4-C5	-2.45	105.29	110.84
2	A	901	M0E	OBD-CAW-NAU	-2.37	119.57	123.08
2	A	901	M0E	CBL-CBM-CBN	-2.37	106.07	110.20
2	A	901	M0E	OCP-CCH-CCI	-2.28	105.59	110.28
2	A	901	M0E	C2-N2-CAG	-2.20	117.45	123.10
2	A	901	M0E	O5-C1-C2	-2.17	106.07	110.78
2	A	901	M0E	CBW-CBX-CBY	-2.13	106.94	110.30
2	A	901	M0E	CCH-OCP-CCL	2.02	115.32	112.11
2	A	901	M0E	CBU-CBV-NCC	2.28	115.30	111.01
2	A	901	M0E	OCD-CBW-CBV	2.29	114.33	109.66
2	A	901	M0E	CAH-CAG-N2	2.33	120.56	116.11
2	A	901	M0E	O4-C4-C5	2.34	115.46	109.32
2	A	901	M0E	OCO-CCJ-CCI	2.42	115.79	110.34
2	A	901	M0E	OCO-CCJ-CCK	2.49	115.94	110.34
2	A	901	M0E	OCE-CCH-CCI	2.51	114.20	108.10
2	A	901	M0E	OCR-CCK-CCJ	2.51	115.99	110.34
2	A	901	M0E	O4-CBU-OCF	2.54	117.10	110.68
2	A	901	M0E	CCB-CCA-NCC	2.54	120.97	116.11
2	A	901	M0E	OCN-CCI-CCJ	2.69	116.39	110.34
2	A	901	M0E	OBE-CAQ-CAW	2.77	116.34	109.63
2	A	901	M0E	OCN-CCI-CCH	2.79	116.13	110.02
2	A	901	M0E	OCE-CBX-CBY	2.80	114.17	106.83
2	A	901	M0E	C6-O6-CBJ	2.90	119.90	113.82
2	A	901	M0E	O3-C3-C2	2.92	115.62	109.66
2	A	901	M0E	OBH-CAP-CAR	3.01	114.44	107.96
2	A	901	M0E	OCE-CCH-OCP	3.01	118.30	110.68
2	A	901	M0E	CBZ-CBY-CBX	3.05	118.38	113.36
2	A	901	M0E	O1-C1-O5	3.18	118.72	110.68
2	A	901	M0E	OCD-CBW-CBX	3.18	117.39	109.87
2	A	901	M0E	O1-CAR-CAX	3.18	117.27	108.87
2	A	901	M0E	OBS-CBJ-O6	3.38	118.19	110.05
2	A	901	M0E	OBE-CAX-OBG	3.45	115.91	111.36
2	A	901	M0E	OBH-CAP-CAO	3.45	113.24	108.16
2	A	901	M0E	O4-C4-C3	3.47	116.13	107.17
2	A	901	M0E	O3-C3-C4	3.49	118.14	109.87
2	A	901	M0E	C3-C2-N2	3.51	117.94	110.66
2	A	901	M0E	OCR-CCK-CCL	3.63	117.78	109.81
2	A	901	M0E	OBG-CAX-CAR	3.67	115.24	108.39

Continued on next page...

Continued from previous page...

Mol	Chain	Res	Type	Atoms	Z	Observed(°)	Ideal(°)
2	A	901	M0E	C1-C2-N2	3.68	117.94	111.01
2	A	901	M0E	OBR-CBM-CBN	4.02	119.89	109.24
2	A	901	M0E	O5-C5-C6	4.05	114.88	106.61
2	A	901	M0E	OBP-CBK-CBL	4.09	119.55	110.34
2	A	901	M0E	OBQ-CBL-CBM	4.10	119.57	110.34
2	A	901	M0E	OBP-CBK-CBJ	4.10	119.02	110.02
2	A	901	M0E	O1-CAR-CAP	4.20	117.82	106.83
2	A	901	M0E	OBS-CBN-CBO	4.23	117.05	106.36
2	A	901	M0E	OBR-CBM-CBL	4.32	120.06	110.34
2	A	901	M0E	OBQ-CBL-CBK	4.33	120.08	110.34
2	A	901	M0E	O6-C6-C5	4.54	117.30	109.08
2	A	901	M0E	OCF-CBY-CBZ	5.86	119.46	106.64
2	A	901	M0E	OCE-CBX-CBW	5.87	122.33	107.17
2	A	901	M0E	O6-CBJ-CBK	8.20	118.39	108.04

There are no chirality outliers.

There are no torsion outliers.

There are no ring outliers.

1 monomer is involved in 18 short contacts:

Mol	Chain	Res	Type	Clashes	Symm-Clashes
2	A	901	M0E	18	0

5.7 Other polymers ⓘ

There are no such residues in this entry.

5.8 Polymer linkage issues ⓘ

There are no chain breaks in this entry.

6 Fit of model and data [i](#)

6.1 Protein, DNA and RNA chains [i](#)

In the following table, the column labelled ‘#RSRZ> 2’ contains the number (and percentage) of RSRZ outliers, followed by percent RSRZ outliers for the chain as percentile scores relative to all X-ray entries and entries of similar resolution. The OWAB column contains the minimum, median, 95th percentile and maximum values of the occupancy-weighted average B-factor per residue. The column labelled ‘Q< 0.9’ lists the number of (and percentage) of residues with an average occupancy less than 0.9.

Mol	Chain	Analysed	<RSRZ>	#RSRZ>2	OWAB(Å ²)	Q<0.9
1	A	227/263 (86%)	-0.25	1 (0%) 93 88	110, 174, 223, 271	0

All (1) RSRZ outliers are listed below:

Mol	Chain	Res	Type	RSRZ
1	A	183	GLY	2.5

6.2 Non-standard residues in protein, DNA, RNA chains [i](#)

There are no non-standard protein/DNA/RNA residues in this entry.

6.3 Carbohydrates [i](#)

There are no carbohydrates in this entry.

6.4 Ligands [i](#)

In the following table, the Atoms column lists the number of modelled atoms in the group and the number defined in the chemical component dictionary. LLDF column lists the quality of electron density of the group with respect to its neighbouring residues in protein, DNA or RNA chains. The B-factors column lists the minimum, median, 95th percentile and maximum values of B factors of atoms in the group. The column labelled ‘Q< 0.9’ lists the number of atoms with occupancy less than 0.9.

Mol	Type	Chain	Res	Atoms	RSCC	RSR	LLDF	B-factors(Å ²)	Q<0.9
2	M0E	A	901	84/109	0.84	0.24	-0.45	96,182,211,243	0

6.5 Other polymers [i](#)

There are no such residues in this entry.