



Full wwPDB X-ray Structure Validation Report ⓘ

Feb 1, 2016 – 09:49 PM GMT

PDB ID : 4WC1
Title : Structure of tRNA-processing enzyme with CTP
Authors : Yamashita, S.; Tomita, K.
Deposited on : 2014-09-04
Resolution : 3.10 Å(reported)

This is a Full wwPDB X-ray Structure Validation Report for a publicly released PDB entry.
We welcome your comments at validation@mail.wwpdb.org
A user guide is available at
<http://wwpdb.org/validation/2016/XrayValidationReportHelp>
with specific help available everywhere you see the ⓘ symbol.

The following versions of software and data (see [references ⓘ](#)) were used in the production of this report:

MolProbity : 4.02b-467
Mogul : 1.7 (RC4), CSD as536be (2015)
Xtriage (Phenix) : 1.9-1692
EDS : rb-20026688
Percentile statistics : 20151230.v01 (using entries in the PDB archive December 30th 2015)
Refmac : 5.8.0135
CCP4 : 6.5.0
Ideal geometry (proteins) : Engh & Huber (2001)
Ideal geometry (DNA, RNA) : Parkinson et al. (1996)
Validation Pipeline (wwPDB-VP) : trunk26865

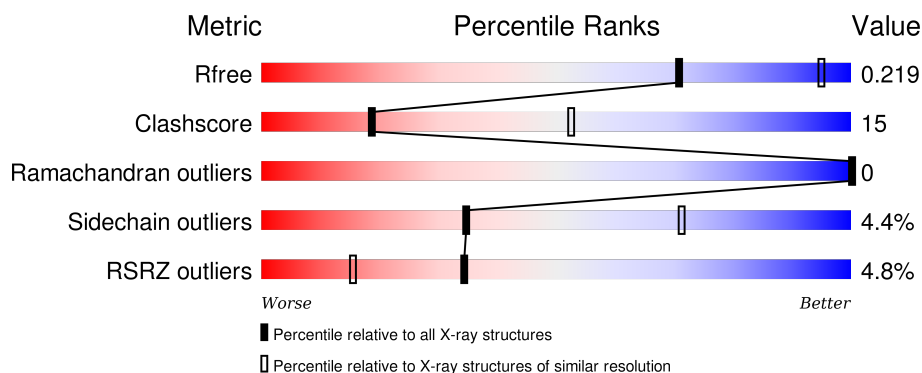
1 Overall quality at a glance

The following experimental techniques were used to determine the structure:

X-RAY DIFFRACTION

The reported resolution of this entry is 3.10 Å.

Percentile scores (ranging between 0-100) for global validation metrics of the entry are shown in the following graphic. The table shows the number of entries on which the scores are based.



Metric	Whole archive (#Entries)	Similar resolution (#Entries, resolution range(Å))
R_{free}	91344	1114 (3.14-3.06)
Clashscore	102246	1222 (3.14-3.06)
Ramachandran outliers	100387	1174 (3.14-3.06)
Sidechain outliers	100360	1174 (3.14-3.06)
RSRZ outliers	91569	1119 (3.14-3.06)

The table below summarises the geometric issues observed across the polymeric chains and their fit to the electron density. The red, orange, yellow and green segments on the lower bar indicate the fraction of residues that contain outliers for ≥ 3 , 2, 1 and 0 types of geometric quality criteria. A grey segment represents the fraction of residues that are not modelled. The numeric value for each fraction is indicated below the corresponding segment, with a dot representing fractions $\leq 5\%$. The upper red bar (where present) indicates the fraction of residues that have poor fit to the electron density. The numeric value is given above the bar.

Mol	Chain	Length	Quality of chain
1	A	396	
1	B	396	

2 Entry composition [i](#)

There are 2 unique types of molecules in this entry. The entry contains 5995 atoms, of which 0 are hydrogens and 0 are deuteriums.

In the tables below, the ZeroOcc column contains the number of atoms modelled with zero occupancy, the AltConf column contains the number of residues with at least one atom in alternate conformation and the Trace column contains the number of residues modelled with at most 2 atoms.

- Molecule 1 is a protein called Poly A polymerase.

Mol	Chain	Residues	Atoms					ZeroOcc	AltConf	Trace
1	A	364	Total	C	N	O	S	0	0	0
			3026	1967	524	528	7			
1	B	350	Total	C	N	O	S	0	0	0
			2911	1892	506	506	7			

There are 28 discrepancies between the modelled and reference sequences:

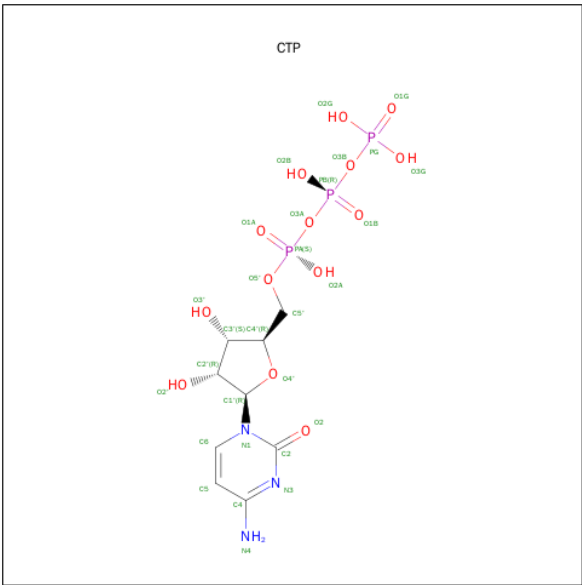
Chain	Residue	Modelled	Actual	Comment	Reference
A	1	MET	-	expression tag	UNP O66728
A	384	LYS	-	expression tag	UNP O66728
A	385	LEU	-	expression tag	UNP O66728
A	386	ALA	-	expression tag	UNP O66728
A	387	ALA	-	expression tag	UNP O66728
A	388	ALA	-	expression tag	UNP O66728
A	389	LEU	-	expression tag	UNP O66728
A	390	GLU	-	expression tag	UNP O66728
A	391	HIS	-	expression tag	UNP O66728
A	392	HIS	-	expression tag	UNP O66728
A	393	HIS	-	expression tag	UNP O66728
A	394	HIS	-	expression tag	UNP O66728
A	395	HIS	-	expression tag	UNP O66728
A	396	HIS	-	expression tag	UNP O66728
B	1	MET	-	expression tag	UNP O66728
B	384	LYS	-	expression tag	UNP O66728
B	385	LEU	-	expression tag	UNP O66728
B	386	ALA	-	expression tag	UNP O66728
B	387	ALA	-	expression tag	UNP O66728
B	388	ALA	-	expression tag	UNP O66728
B	389	LEU	-	expression tag	UNP O66728
B	390	GLU	-	expression tag	UNP O66728
B	391	HIS	-	expression tag	UNP O66728
B	392	HIS	-	expression tag	UNP O66728
B	393	HIS	-	expression tag	UNP O66728

Continued on next page...

Continued from previous page...

Chain	Residue	Modelled	Actual	Comment	Reference
B	394	HIS	-	expression tag	UNP O66728
B	395	HIS	-	expression tag	UNP O66728
B	396	HIS	-	expression tag	UNP O66728

- Molecule 2 is CYTIDINE-5'-TRIPHOSPHATE (three-letter code: CTP) (formula: C₉H₁₆N₃O₁₄P₃).

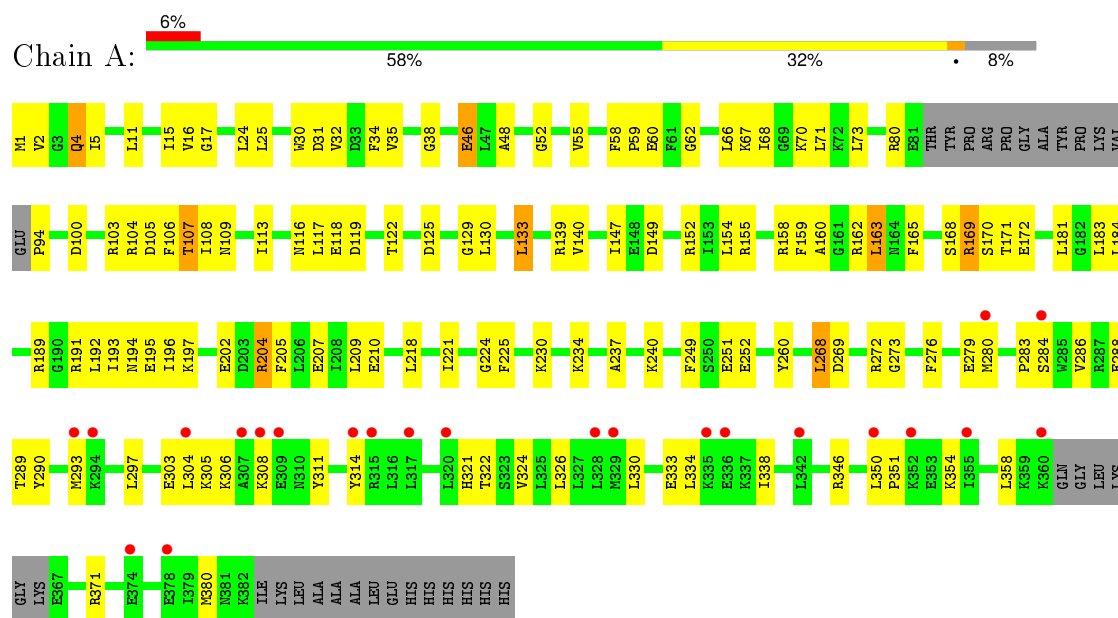


Mol	Chain	Residues	Atoms					ZeroOcc	AltConf
2	A	1	Total	C	N	O	P	0	0
			29	9	3	14	3		
2	B	1	Total	C	N	O	P	0	0
			29	9	3	14	3		

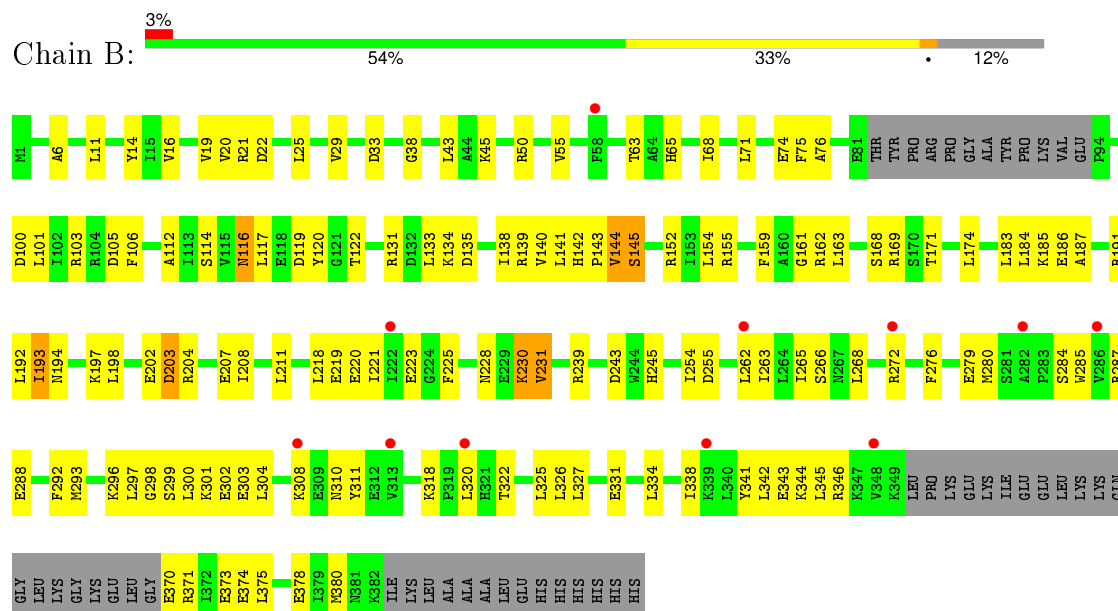
3 Residue-property plots

These plots are drawn for all protein, RNA and DNA chains in the entry. The first graphic for a chain summarises the proportions of errors displayed in the second graphic. The second graphic shows the sequence view annotated by issues in geometry and electron density. Residues are color-coded according to the number of geometric quality criteria for which they contain at least one outlier: green = 0, yellow = 1, orange = 2 and red = 3 or more. A red dot above a residue indicates a poor fit to the electron density ($RSRZ > 2$). Stretches of 2 or more consecutive residues without any outlier are shown as a green connector. Residues present in the sample, but not in the model, are shown in grey.

• Molecule 1: Poly A polymerase



• Molecule 1: Poly A polymerase



4 Data and refinement statistics

Property	Value	Source
Space group	P 1 21 1	Depositor
Cell constants a, b, c, α , β , γ	58.40Å 108.09Å 84.92Å 90.00° 110.08° 90.00°	Depositor
Resolution (Å)	19.83 – 3.10 48.90 – 3.10	Depositor EDS
% Data completeness (in resolution range)	98.8 (19.83-3.10) 98.3 (48.90-3.10)	Depositor EDS
R_{merge}	0.08	Depositor
R_{sym}	(Not available)	Depositor
$\langle I/\sigma(I) \rangle$ ¹	1.53 (at 3.12Å)	Xtriage
Refinement program	PHENIX (phenix.refine: 1.8.4_1496)	Depositor
R, R_{free}	0.181 , 0.231 0.182 , 0.219	Depositor DCC
R_{free} test set	892 reflections (5.27%)	DCC
Wilson B-factor (Å ²)	99.8	Xtriage
Anisotropy	0.459	Xtriage
Bulk solvent k_{sol} (e/Å ³), B_{sol} (Å ²)	0.32 , 105.2	EDS
Estimated twinning fraction	0.490 for h,-k,-h-l 0.468 for h,-k,-h-l	Xtriage
Reported twinning fraction	0.490 for h,-k,-h-l	Depositor
L-test for twinning ²	$\langle L \rangle = 0.49$, $\langle L^2 \rangle = 0.32$	Xtriage
Outliers	0 of 17858 reflections	Xtriage
F_o, F_c correlation	0.96	EDS
Total number of atoms	5995	wwPDB-VP
Average B, all atoms (Å ²)	135.0	wwPDB-VP

Xtriage's analysis on translational NCS is as follows: *The largest off-origin peak in the Patterson function is 6.80% of the height of the origin peak. No significant pseudotranslation is detected.*

¹ Intensities estimated from amplitudes.

² Theoretical values of $\langle |L| \rangle$, $\langle L^2 \rangle$ for acentric reflections are 0.5, 0.375 respectively for untwinned datasets, and 0.333, 0.2 for perfectly twinned datasets.

5 Model quality

5.1 Standard geometry

Bond lengths and bond angles in the following residue types are not validated in this section: CTP

The Z score for a bond length (or angle) is the number of standard deviations the observed value is removed from the expected value. A bond length (or angle) with $|Z| > 5$ is considered an outlier worth inspection. RMSZ is the root-mean-square of all Z scores of the bond lengths (or angles).

Mol	Chain	Bond lengths		Bond angles	
		RMSZ	$\# Z > 5$	RMSZ	$\# Z > 5$
1	A	0.31	0/3077	0.47	0/4122
1	B	0.31	0/2961	0.48	0/3969
All	All	0.31	0/6038	0.48	0/8091

There are no bond length outliers.

There are no bond angle outliers.

There are no chirality outliers.

There are no planarity outliers.

5.2 Too-close contacts

In the following table, the Non-H and H(model) columns list the number of non-hydrogen atoms and hydrogen atoms in the chain respectively. The H(added) column lists the number of hydrogen atoms added and optimized by MolProbity. The Clashes column lists the number of clashes within the asymmetric unit, whereas Symm-Clashes lists symmetry related clashes.

Mol	Chain	Non-H	H(model)	H(added)	Clashes	Symm-Clashes
1	A	3026	0	3190	95	0
1	B	2911	0	3060	95	0
2	A	29	0	12	4	0
2	B	29	0	12	4	0
All	All	5995	0	6274	189	0

The all-atom clashscore is defined as the number of clashes found per 1000 atoms (including hydrogen atoms). The all-atom clashscore for this structure is 15.

All (189) close contacts within the same asymmetric unit are listed below, sorted by their clash magnitude.

Atom-1	Atom-2	Interatomic distance (Å)	Clash overlap (Å)
1:B:161:GLY:HA3	1:B:208:ILE:HG12	1.57	0.84
1:B:298:GLY:HA2	1:B:301:LYS:HE2	1.66	0.78
1:A:269:ASP:H	1:A:272:ARG:HE	1.35	0.74
1:A:109:ASN:HD21	1:A:159:PHE:HE2	1.36	0.74
1:B:21:ARG:NH2	2:B:501:CTP:O3G	2.21	0.73
1:B:162:ARG:NH2	2:B:501:CTP:O2G	2.23	0.71
1:A:303:GLU:HA	1:A:306:LYS:HB2	1.72	0.70
1:B:45:LYS:HA	1:B:55:VAL:HG11	1.73	0.69
1:B:142:HIS:HD2	1:B:144:VAL:HG23	1.58	0.69
1:A:105:ASP:OD2	1:A:155:ARG:NH1	2.22	0.68
1:B:304:LEU:HD23	1:B:334:LEU:HD13	1.76	0.68
1:B:293:MET:HA	1:B:297:LEU:HB2	1.77	0.65
1:A:252:GLU:OE2	1:A:346:ARG:NH2	2.29	0.65
1:B:223:GLU:O	1:B:272:ARG:NH1	2.31	0.64
1:A:34:PHE:HE1	1:A:73:LEU:HD22	1.63	0.64
1:B:116:ASN:OD1	1:B:116:ASN:N	2.29	0.63
1:A:107:THR:HB	1:A:129:GLY:HA2	1.79	0.63
1:A:158:ARG:NH2	1:A:195:GLU:OE1	2.26	0.63
1:B:131:ARG:NE	1:B:135:ASP:OD2	2.32	0.62
1:B:19:VAL:HG13	1:B:29:VAL:HG21	1.81	0.62
1:B:11:LEU:HD22	1:B:38:GLY:HA3	1.82	0.61
1:A:268:LEU:HA	1:A:272:ARG:HH21	1.66	0.59
1:A:105:ASP:OD1	1:A:106:PHE:N	2.30	0.59
1:A:333:GLU:HG2	1:A:334:LEU:HG	1.86	0.58
1:B:20:VAL:HG21	1:B:112:ALA:HA	1.85	0.58
1:A:204:ARG:NH1	1:A:207:GLU:OE1	2.36	0.58
1:A:160:ALA:HA	1:A:165:PHE:HB2	1.84	0.58
1:A:55:VAL:HG23	1:A:66:LEU:HB3	1.86	0.57
2:A:401:CTP:O2G	2:A:401:CTP:O1A	2.22	0.57
1:A:80:ARG:NH2	1:A:94:PRO:O	2.38	0.57
1:A:105:ASP:HB3	1:A:152:ARG:NE	2.19	0.57
1:B:152:ARG:HA	1:B:155:ARG:HB2	1.87	0.56
1:A:125:ASP:OD1	1:A:129:GLY:N	2.37	0.56
1:A:24:LEU:HD13	1:A:130:LEU:HD13	1.86	0.56
1:B:22:ASP:HA	1:B:25:LEU:HD12	1.88	0.56
1:B:203:ASP:N	1:B:203:ASP:OD1	2.37	0.56
1:B:142:HIS:CD2	1:B:144:VAL:HG23	2.41	0.55
1:B:117:LEU:O	1:B:120:TYR:HB2	2.06	0.55
1:A:269:ASP:HB2	1:A:272:ARG:HG2	1.89	0.55
1:A:5:ILE:HD13	1:A:46:GLU:HB3	1.89	0.55
1:B:262:LEU:HA	1:B:265:ILE:HG12	1.89	0.55
1:B:159:PHE:HE1	2:B:501:CTP:O2G	1.89	0.55

Continued on next page...

Continued from previous page...

Atom-1	Atom-2	Interatomic distance (Å)	Clash overlap (Å)
1:B:207:GLU:OE2	1:B:239:ARG:NH1	2.40	0.54
1:A:305:LYS:HE3	1:A:333:GLU:HG3	1.90	0.54
1:B:19:VAL:HG21	1:B:33:ASP:H	1.72	0.54
1:A:354:LYS:O	1:A:358:LEU:HG	2.08	0.53
1:B:187:ALA:HB3	1:B:192:LEU:HD11	1.89	0.53
1:B:239:ARG:O	1:B:243:ASP:HB2	2.07	0.53
1:A:204:ARG:NH1	1:A:204:ARG:HA	2.24	0.53
1:A:225:PHE:HA	1:A:268:LEU:HD21	1.89	0.53
1:A:269:ASP:H	1:A:272:ARG:NE	2.05	0.53
1:B:293:MET:HG3	1:B:297:LEU:HD22	1.90	0.53
1:A:205:PHE:HE2	1:A:260:TYR:HB2	1.73	0.52
1:B:143:PRO:HA	1:B:174:LEU:HD13	1.91	0.52
1:B:325:LEU:HD13	1:B:342:LEU:HD21	1.91	0.52
1:B:343:GLU:HB3	1:B:344:LYS:HE2	1.91	0.52
1:B:14:TYR:HD1	1:B:114:SER:HA	1.73	0.51
1:A:139:ARG:HH22	1:A:169:ARG:CZ	2.24	0.51
1:B:331:GLU:HG3	1:B:334:LEU:HD12	1.92	0.51
1:A:1:MET:HG3	1:A:2:VAL:H	1.75	0.51
1:A:155:ARG:NH2	2:A:401:CTP:O3A	2.44	0.51
1:B:225:PHE:HA	1:B:268:LEU:HD21	1.91	0.51
1:B:298:GLY:O	1:B:302:GLU:HG2	2.11	0.51
1:B:142:HIS:O	1:B:145:SER:HB2	2.11	0.50
1:B:370:GLU:HA	1:B:373:GLU:HG2	1.93	0.50
1:B:310:ASN:HB2	1:B:380:MET:HG2	1.93	0.50
1:B:6:ALA:O	1:B:11:LEU:N	2.44	0.50
1:A:15:ILE:HG12	1:A:34:PHE:CE2	2.46	0.50
1:B:341:TYR:CE1	1:B:346:ARG:HB3	2.47	0.50
1:A:293:MET:HG3	1:A:297:LEU:HD22	1.94	0.50
1:B:228:ASN:ND2	1:B:231:VAL:HB	2.27	0.49
1:B:304:LEU:HG	1:B:334:LEU:HD22	1.94	0.49
1:A:358:LEU:HD22	1:A:371:ARG:HG2	1.93	0.49
1:B:21:ARG:NE	1:B:22:ASP:OD1	2.46	0.49
1:A:108:ILE:HG13	1:A:109:ASN:OD1	2.13	0.49
1:B:198:LEU:O	1:B:202:GLU:HG2	2.11	0.49
1:B:322:THR:HA	1:B:325:LEU:HD12	1.95	0.49
1:A:289:THR:HG23	1:A:324:VAL:HG22	1.95	0.48
1:B:65:HIS:CE1	1:B:74:GLU:HG3	2.48	0.48
1:B:131:ARG:HD2	1:B:134:LYS:HD3	1.96	0.48
1:A:11:LEU:HD22	1:A:38:GLY:HA3	1.94	0.48
1:A:283:PRO:HD2	1:A:286:VAL:HG21	1.96	0.48
1:B:22:ASP:HA	1:B:25:LEU:HB2	1.96	0.48

Continued on next page...

Continued from previous page...

Atom-1	Atom-2	Interatomic distance (Å)	Clash overlap (Å)
1:A:218:LEU:HD23	1:A:221:ILE:HD12	1.96	0.47
1:A:16:VAL:HG21	1:A:35:VAL:HB	1.95	0.47
2:A:401:CTP:PB	2:A:401:CTP:H5'1	2.54	0.47
1:B:162:ARG:HH22	2:B:501:CTP:PG	2.36	0.47
1:A:116:ASN:HB2	1:A:119:ASP:OD1	2.14	0.47
1:B:284:SER:O	1:B:288:GLU:HG2	2.14	0.47
1:B:300:LEU:HD21	1:B:320:LEU:HD11	1.95	0.47
1:B:100:ASP:O	1:B:103:ARG:HG2	2.14	0.47
1:B:184:LEU:HB3	1:B:220:GLU:OE1	2.15	0.47
1:A:4:GLN:HG3	1:A:117:LEU:HD11	1.96	0.47
1:B:138:ILE:HD11	1:B:163:LEU:HD12	1.96	0.47
1:B:68:ILE:O	1:B:71:LEU:HB2	2.15	0.47
1:B:140:VAL:HG22	1:B:171:THR:HG23	1.96	0.47
1:A:189:ARG:NH1	1:A:221:ILE:O	2.41	0.47
1:A:30:TRP:HB3	1:A:71:LEU:HA	1.97	0.47
1:A:251:GLU:HG2	1:B:318:LYS:HE3	1.97	0.47
1:B:245:HIS:CD2	1:B:326:LEU:HD21	2.50	0.46
1:A:237:ALA:HA	1:A:240:LYS:HD2	1.96	0.46
1:A:168:SER:HB3	1:A:171:THR:OG1	2.15	0.46
1:B:292:PHE:CE1	1:B:296:LYS:HB2	2.50	0.46
1:A:32:VAL:HB	1:A:73:LEU:HD23	1.98	0.46
1:B:375:LEU:HA	1:B:378:GLU:HG3	1.98	0.46
1:A:249:PHE:HB2	1:A:252:GLU:HB2	1.97	0.46
1:B:284:SER:HA	1:B:287:ARG:NH1	2.31	0.46
1:A:334:LEU:O	1:A:338:ILE:HG12	2.16	0.46
1:B:185:LYS:HE3	1:B:220:GLU:HG2	1.98	0.45
1:A:1:MET:HG3	1:A:2:VAL:HG23	1.98	0.45
1:A:48:ALA:O	1:A:52:GLY:N	2.50	0.45
1:A:288:GLU:OE1	1:B:284:SER:HB2	2.17	0.45
1:B:183:LEU:HA	1:B:186:GLU:HB2	1.98	0.45
1:B:63:THR:HB	1:B:75:PHE:O	2.16	0.45
1:A:321:HIS:HB3	1:A:324:VAL:HG23	1.99	0.45
1:B:105:ASP:OD1	1:B:106:PHE:N	2.46	0.45
1:A:192:LEU:O	1:A:196:ILE:HG13	2.17	0.45
1:B:262:LEU:O	1:B:266:SER:N	2.50	0.45
1:A:184:LEU:HD12	1:A:184:LEU:HA	1.79	0.45
1:B:193:ILE:HG12	1:B:279:GLU:HG2	1.99	0.45
1:B:311:TYR:HA	1:B:380:MET:SD	2.56	0.45
1:A:100:ASP:O	1:A:103:ARG:HG2	2.16	0.44
1:B:194:ASN:HA	1:B:197:LYS:HD3	1.99	0.44
1:B:154:LEU:HD21	1:B:221:ILE:HD11	2.00	0.44

Continued on next page...

Continued from previous page...

Atom-1	Atom-2	Interatomic distance (Å)	Clash overlap (Å)
1:A:17:GLY:HA2	1:A:109:ASN:O	2.18	0.44
1:A:207:GLU:O	1:A:210:GLU:HB2	2.17	0.44
1:A:189:ARG:NE	1:A:279:GLU:OE2	2.40	0.44
1:A:118:GLU:HG2	1:A:119:ASP:H	1.82	0.44
1:A:162:ARG:NE	1:A:202:GLU:OE2	2.49	0.44
1:A:163:LEU:HG	1:A:163:LEU:H	1.61	0.44
1:A:234:LYS:HE3	1:A:330:LEU:HD13	2.00	0.44
1:B:219:GLU:N	1:B:219:GLU:OE1	2.43	0.44
1:A:104:ARG:HD3	2:A:401:CTP:O3'	2.18	0.44
1:B:141:LEU:HB2	1:B:142:HIS:ND1	2.33	0.44
1:A:154:LEU:HB2	1:A:195:GLU:HG2	1.99	0.44
1:A:149:ASP:OD1	1:A:191:ARG:NH2	2.51	0.44
1:A:149:ASP:HB3	1:A:152:ARG:HD2	2.00	0.43
1:B:371:ARG:HH11	1:B:374:GLU:HB2	1.83	0.43
1:B:101:LEU:HA	1:B:101:LEU:HD23	1.84	0.43
1:A:268:LEU:HD22	1:A:272:ARG:NH2	2.34	0.43
1:A:350:LEU:HA	1:A:351:PRO:HD3	1.75	0.43
1:B:139:ARG:HH12	1:B:169:ARG:HH12	1.65	0.43
1:A:273:GLY:HA3	1:A:290:TYR:OH	2.18	0.43
1:B:254:ILE:HD12	1:B:285:TRP:CZ3	2.53	0.43
1:A:105:ASP:OD1	1:A:109:ASN:ND2	2.51	0.43
1:B:371:ARG:NH1	1:B:374:GLU:HB2	2.35	0.42
1:A:311:TYR:HA	1:A:380:MET:SD	2.59	0.42
1:B:16:VAL:HG12	1:B:33:ASP:O	2.19	0.42
1:A:169:ARG:O	1:A:172:GLU:HB3	2.18	0.42
1:B:334:LEU:O	1:B:338:ILE:HG12	2.20	0.42
1:B:116:ASN:HB2	1:B:119:ASP:OD1	2.20	0.42
1:A:24:LEU:HD23	1:A:24:LEU:HA	1.82	0.42
1:B:341:TYR:HA	1:B:345:LEU:HG	2.02	0.42
1:A:68:ILE:O	1:A:71:LEU:HB3	2.20	0.42
1:A:209:LEU:HD23	1:A:209:LEU:HA	1.77	0.42
1:A:129:GLY:O	1:A:133:LEU:HB2	2.19	0.42
1:A:147:ILE:HA	1:A:183:LEU:HD13	2.02	0.42
1:A:58:PHE:O	1:A:62:GLY:N	2.51	0.42
1:A:113:ILE:HA	1:A:122:THR:O	2.20	0.41
1:A:322:THR:O	1:A:326:LEU:HG	2.19	0.41
1:A:58:PHE:HA	1:A:59:PRO:HD2	1.86	0.41
1:B:254:ILE:HD12	1:B:285:TRP:CH2	2.55	0.41
1:B:263:ILE:HD11	1:B:327:LEU:HD11	2.03	0.41
1:B:119:ASP:OD1	1:B:119:ASP:N	2.48	0.41
1:A:276:PHE:O	1:A:279:GLU:HB3	2.21	0.41

Continued on next page...

Continued from previous page...

Atom-1	Atom-2	Interatomic distance (Å)	Clash overlap (Å)
1:B:63:THR:HB	1:B:76:ALA:HA	2.02	0.41
1:B:310:ASN:ND2	1:B:380:MET:O	2.54	0.41
1:B:299:SER:O	1:B:303:GLU:HG3	2.21	0.41
1:A:284:SER:OG	1:B:284:SER:OG	2.28	0.41
1:A:181:LEU:HA	1:A:181:LEU:HD23	1.77	0.41
1:A:67:LYS:HE2	1:A:70:LYS:HA	2.02	0.41
1:A:304:LEU:HD23	1:A:334:LEU:HD13	2.02	0.41
1:B:208:ILE:HA	1:B:211:LEU:HB2	2.03	0.41
1:A:224:GLY:HA3	1:A:272:ARG:NH1	2.35	0.41
1:A:25:LEU:HD21	1:A:133:LEU:HD22	2.03	0.41
1:B:207:GLU:N	1:B:207:GLU:OE1	2.43	0.41
1:A:1:MET:HG3	1:A:2:VAL:N	2.36	0.41
1:B:193:ILE:O	1:B:197:LYS:HG3	2.21	0.41
1:B:191:ARG:HB3	1:B:191:ARG:HE	1.62	0.41
1:B:276:PHE:CE2	1:B:280:MET:HG3	2.56	0.41
1:B:218:LEU:HD23	1:B:218:LEU:HA	1.91	0.41
1:B:230:LYS:HA	1:B:230:LYS:HD3	1.90	0.41
1:A:1:MET:HB3	1:A:1:MET:HE2	1.80	0.41
1:A:276:PHE:O	1:A:280:MET:HG2	2.21	0.41
1:A:311:TYR:O	1:A:314:TYR:HB3	2.21	0.40
1:A:194:ASN:O	1:A:197:LYS:HB2	2.21	0.40
1:A:193:ILE:HG13	1:A:280:MET:SD	2.61	0.40
1:B:142:HIS:CD2	1:B:145:SER:HA	2.56	0.40
1:A:60:GLU:CD	1:A:60:GLU:H	2.24	0.40

There are no symmetry-related clashes.

5.3 Torsion angles [i](#)

5.3.1 Protein backbone [i](#)

In the following table, the Percentiles column shows the percent Ramachandran outliers of the chain as a percentile score with respect to all X-ray entries followed by that with respect to entries of similar resolution.

The Analysed column shows the number of residues for which the backbone conformation was analysed, and the total number of residues.

Mol	Chain	Analysed	Favoured	Allowed	Outliers	Percentiles
1	A	358/396 (90%)	345 (96%)	13 (4%)	0	100 100

Continued on next page...

Continued from previous page...

Mol	Chain	Analysed	Favoured	Allowed	Outliers	Percentiles	
1	B	344/396 (87%)	330 (96%)	14 (4%)	0	100	100
All	All	702/792 (89%)	675 (96%)	27 (4%)	0	100	100

There are no Ramachandran outliers to report.

5.3.2 Protein sidechains ⓘ

In the following table, the Percentiles column shows the percent sidechain outliers of the chain as a percentile score with respect to all X-ray entries followed by that with respect to entries of similar resolution.

The Analysed column shows the number of residues for which the sidechain conformation was analysed, and the total number of residues.

Mol	Chain	Analysed	Rotameric	Outliers	Percentiles	
1	A	324/349 (93%)	311 (96%)	13 (4%)	38	75
1	B	311/349 (89%)	296 (95%)	15 (5%)	31	69
All	All	635/698 (91%)	607 (96%)	28 (4%)	35	71

All (28) residues with a non-rotameric sidechain are listed below:

Mol	Chain	Res	Type
1	A	4	GLN
1	A	31	ASP
1	A	46	GLU
1	A	107	THR
1	A	133	LEU
1	A	140	VAL
1	A	163	LEU
1	A	169	ARG
1	A	170	SER
1	A	204	ARG
1	A	230	LYS
1	A	268	LEU
1	A	308	LYS
1	B	43	LEU
1	B	50	ARG
1	B	116	ASN
1	B	122	THR
1	B	133	LEU

Continued on next page...

Continued from previous page...

Mol	Chain	Res	Type
1	B	144	VAL
1	B	145	SER
1	B	168	SER
1	B	193	ILE
1	B	203	ASP
1	B	204	ARG
1	B	230	LYS
1	B	231	VAL
1	B	255	ASP
1	B	308	LYS

Some sidechains can be flipped to improve hydrogen bonding and reduce clashes. There are no such sidechains identified.

5.3.3 RNA ⓘ

There are no RNA molecules in this entry.

5.4 Non-standard residues in protein, DNA, RNA chains ⓘ

There are no non-standard protein/DNA/RNA residues in this entry.

5.5 Carbohydrates ⓘ

There are no carbohydrates in this entry.

5.6 Ligand geometry ⓘ

2 ligands are modelled in this entry.

In the following table, the Counts columns list the number of bonds (or angles) for which Mogul statistics could be retrieved, the number of bonds (or angles) that are observed in the model and the number of bonds (or angles) that are defined in the chemical component dictionary. The Link column lists molecule types, if any, to which the group is linked. The Z score for a bond length (or angle) is the number of standard deviations the observed value is removed from the expected value. A bond length (or angle) with $|Z| > 2$ is considered an outlier worth inspection. RMSZ is the root-mean-square of all Z scores of the bond lengths (or angles).

Mol	Type	Chain	Res	Link	Bond lengths			Bond angles		
					Counts	RMSZ	$\# Z > 2$	Counts	RMSZ	$\# Z > 2$
2	CTP	A	401	-	21,30,30	0.78	0	31,47,47	1.34	4 (12%)

Mol	Type	Chain	Res	Link	Bond lengths			Bond angles		
					Counts	RMSZ	# Z > 2	Counts	RMSZ	# Z > 2
2	CTP	B	501	-	21,30,30	0.75	0	31,47,47	1.51	5 (16%)

In the following table, the Chirals column lists the number of chiral outliers, the number of chiral centers analysed, the number of these observed in the model and the number defined in the chemical component dictionary. Similar counts are reported in the Torsion and Rings columns. '-' means no outliers of that kind were identified.

Mol	Type	Chain	Res	Link	Chirals	Torsions	Rings
2	CTP	A	401	-	-	0/18/38/38	0/2/2/2
2	CTP	B	501	-	-	0/18/38/38	0/2/2/2

There are no bond length outliers.

All (9) bond angle outliers are listed below:

Mol	Chain	Res	Type	Atoms	Z	Observed(°)	Ideal(°)
2	B	501	CTP	PB-O3A-PA	-4.01	121.47	132.73
2	A	401	CTP	PB-O3A-PA	-3.81	122.03	132.73
2	A	401	CTP	PB-O3B-PG	-3.49	120.97	132.67
2	B	501	CTP	PB-O3B-PG	-2.11	125.60	132.67
2	A	401	CTP	N4-C4-N3	2.17	120.46	116.50
2	B	501	CTP	N4-C4-N3	2.25	120.61	116.50
2	A	401	CTP	C2-N3-C4	2.43	119.04	115.61
2	B	501	CTP	C4'-O4'-C1'	2.79	112.79	109.72
2	B	501	CTP	C2-N3-C4	2.90	119.70	115.61

There are no chirality outliers.

There are no torsion outliers.

There are no ring outliers.

2 monomers are involved in 8 short contacts:

Mol	Chain	Res	Type	Clashes	Symm-Clashes
2	A	401	CTP	4	0
2	B	501	CTP	4	0

5.7 Other polymers ⓘ

There are no such residues in this entry.

5.8 Polymer linkage issues ⓘ

There are no chain breaks in this entry.

6 Fit of model and data ⓘ

6.1 Protein, DNA and RNA chains ⓘ

In the following table, the column labelled ‘#RSRZ> 2’ contains the number (and percentage) of RSRZ outliers, followed by percent RSRZ outliers for the chain as percentile scores relative to all X-ray entries and entries of similar resolution. The OWAB column contains the minimum, median, 95th percentile and maximum values of the occupancy-weighted average B-factor per residue. The column labelled ‘Q< 0.9’ lists the number of (and percentage) of residues with an average occupancy less than 0.9.

Mol	Chain	Analysed	<RSRZ>	#RSRZ>2		OWAB(Å ²)	Q<0.9
1	A	364/396 (91%)	0.06	23 (6%)	23 9	61, 116, 251, 422	0
1	B	350/396 (88%)	-0.03	11 (3%)	52 28	58, 118, 234, 287	0
All	All	714/792 (90%)	0.02	34 (4%)	34 15	58, 117, 246, 422	0

All (34) RSRZ outliers are listed below:

Mol	Chain	Res	Type	RSRZ
1	A	293	MET	8.5
1	A	294	LYS	8.5
1	A	309	GLU	6.5
1	A	360	LYS	5.0
1	B	308	LYS	5.0
1	A	335	LYS	4.3
1	A	336	GLU	4.3
1	B	262	LEU	4.1
1	A	355	ILE	4.0
1	B	58	PHE	4.0
1	A	378	GLU	3.9
1	A	315	ARG	3.9
1	A	308	LYS	3.9
1	A	350	LEU	3.7
1	B	320	LEU	3.7
1	A	307	ALA	3.6
1	B	313	VAL	3.5
1	B	348	VAL	3.5
1	A	320	LEU	3.2
1	B	339	LYS	3.1
1	A	328	LEU	3.1
1	B	272	ARG	3.0
1	A	284	SER	2.9
1	A	280	MET	2.7

Continued on next page...

Continued from previous page...

Mol	Chain	Res	Type	RSRZ
1	A	304	LEU	2.5
1	B	282	ALA	2.5
1	A	329	MET	2.4
1	B	286	VAL	2.3
1	A	374	GLU	2.3
1	A	352	LYS	2.2
1	A	317	LEU	2.2
1	B	222	ILE	2.1
1	A	314	TYR	2.1
1	A	342	LEU	2.0

6.2 Non-standard residues in protein, DNA, RNA chains [i](#)

There are no non-standard protein/DNA/RNA residues in this entry.

6.3 Carbohydrates [i](#)

There are no carbohydrates in this entry.

6.4 Ligands [i](#)

In the following table, the Atoms column lists the number of modelled atoms in the group and the number defined in the chemical component dictionary. LLDF column lists the quality of electron density of the group with respect to its neighbouring residues in protein, DNA or RNA chains. The B-factors column lists the minimum, median, 95th percentile and maximum values of B factors of atoms in the group. The column labelled 'Q< 0.9' lists the number of atoms with occupancy less than 0.9.

Mol	Type	Chain	Res	Atoms	RSCC	RSR	LLDF	B-factors(Å ²)	Q<0.9
2	CTP	A	401	29/29	0.94	0.20	-0.09	60,79,119,123	0
2	CTP	B	501	29/29	0.95	0.20	-0.09	54,81,118,123	0

6.5 Other polymers [i](#)

There are no such residues in this entry.