



wwPDB X-ray Structure Validation Summary Report ⓘ

Feb 1, 2016 – 02:17 PM GMT

PDB ID : 3WPC
Title : Crystal structure of horse TLR9 in complex with agonistic DNA1668_12mer
Authors : Ohto, U.; Tanji, H.; Shimizu, T.
Deposited on : 2014-01-11
Resolution : 1.60 Å(reported)

This is a wwPDB X-ray Structure Validation Summary Report for a publicly released PDB entry.
We welcome your comments at validation@mail.wwpdb.org
A user guide is available at
<http://wwpdb.org/validation/2016/XrayValidationReportHelp>
with specific help available everywhere you see the ⓘ symbol.

The following versions of software and data (see [references ⓘ](#)) were used in the production of this report:

MolProbity : 4.02b-467
Mogul : 1.7 (RC4), CSD as536be (2015)
Xtriage (Phenix) : 1.9-1692
EDS : rb-20026688
Percentile statistics : 20151230.v01 (using entries in the PDB archive December 30th 2015)
Refmac : 5.8.0135
CCP4 : 6.5.0
Ideal geometry (proteins) : Engh & Huber (2001)
Ideal geometry (DNA, RNA) : Parkinson et al. (1996)
Validation Pipeline (wwPDB-VP) : trunk26865

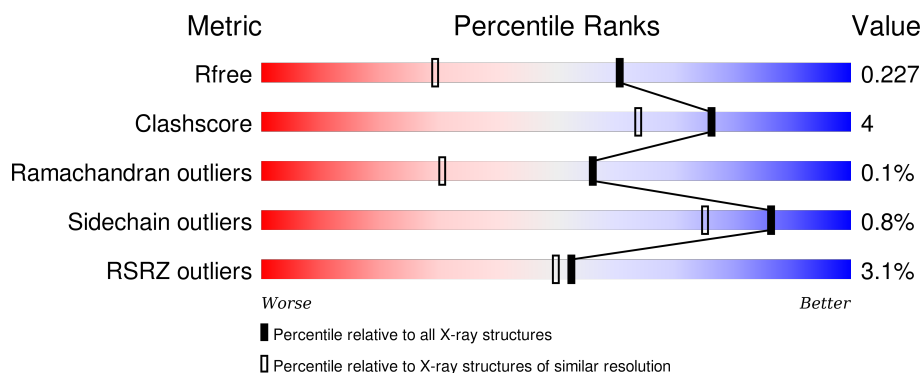
1 Overall quality at a glance ⓘ

The following experimental techniques were used to determine the structure:

X-RAY DIFFRACTION

The reported resolution of this entry is 1.60 Å.

Percentile scores (ranging between 0-100) for global validation metrics of the entry are shown in the following graphic. The table shows the number of entries on which the scores are based.



Metric	Whole archive (#Entries)	Similar resolution (#Entries, resolution range(Å))
R_{free}	91344	2475 (1.60-1.60)
Clashscore	102246	2732 (1.60-1.60)
Ramachandran outliers	100387	2654 (1.60-1.60)
Sidechain outliers	100360	2653 (1.60-1.60)
RSRZ outliers	91569	2479 (1.60-1.60)

The table below summarises the geometric issues observed across the polymeric chains and their fit to the electron density. The red, orange, yellow and green segments on the lower bar indicate the fraction of residues that contain outliers for ≥ 3 , 2, 1 and 0 types of geometric quality criteria. A grey segment represents the fraction of residues that are not modelled. The numeric value for each fraction is indicated below the corresponding segment, with a dot representing fractions $\leq 5\%$. The upper red bar (where present) indicates the fraction of residues that have poor fit to the electron density. The numeric value is given above the bar.

Mol	Chain	Length	Quality of chain
1	A	802	<div> <div>2%</div> <div>86%</div> <div>7%</div> <div>7%</div> </div>
1	B	802	<div> <div>3%</div> <div>86%</div> <div>7%</div> <div>7%</div> </div>
2	E	12	<div> <div>25%</div> <div>58%</div> <div>42%</div> </div>
2	F	12	<div> <div>33%</div> <div>42%</div> <div>58%</div> </div>

The following table lists non-polymeric compounds, carbohydrate monomers and non-standard

residues in protein, DNA, RNA chains that are outliers for geometric or electron-density-fit criteria:

Mol	Type	Chain	Res	Chirality	Geometry	Clashes	Electron density
3	NAG	A	901	-	-	-	X
3	NAG	A	905	-	-	-	X
3	NAG	B	904	-	-	-	X
3	NAG	B	906	-	-	-	X
4	NAG	A	907	-	-	-	X
5	SO4	A	909	-	-	-	X
5	SO4	B	911	-	-	-	X

2 Entry composition

There are 8 unique types of molecules in this entry. The entry contains 14350 atoms, of which 0 are hydrogens and 0 are deuteriums.

In the tables below, the ZeroOcc column contains the number of atoms modelled with zero occupancy, the AltConf column contains the number of residues with at least one atom in alternate conformation and the Trace column contains the number of residues modelled with at most 2 atoms.

- Molecule 1 is a protein called Toll-like receptor 9.

Mol	Chain	Residues	Atoms					ZeroOcc	AltConf	Trace
1	A	747	Total	C	N	O	S	7	19	0
			6013	3834	1058	1093	28			
1	B	749	Total	C	N	O	S	12	18	0
			6009	3833	1054	1093	29			

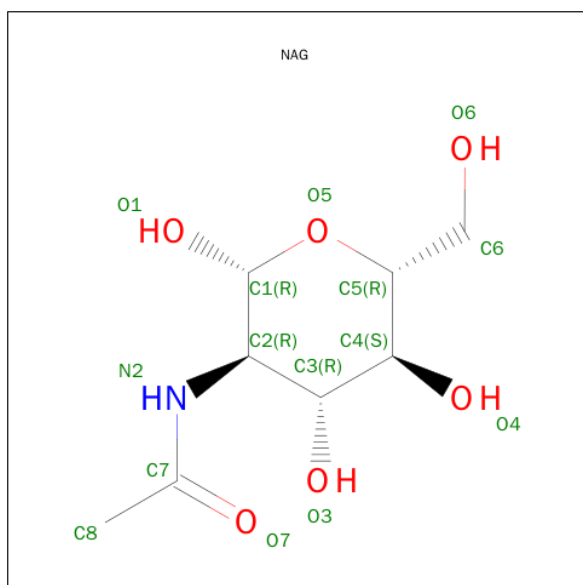
There are 20 discrepancies between the modelled and reference sequences:

Chain	Residue	Modelled	Actual	Comment	Reference
A	22	ARG	-	EXPRESSION TAG	UNP Q2EEY0
A	23	SER	-	EXPRESSION TAG	UNP Q2EEY0
A	24	PRO	-	EXPRESSION TAG	UNP Q2EEY0
A	25	TRP	-	EXPRESSION TAG	UNP Q2EEY0
A	818	GLU	-	EXPRESSION TAG	UNP Q2EEY0
A	819	PHE	-	EXPRESSION TAG	UNP Q2EEY0
A	820	LEU	-	EXPRESSION TAG	UNP Q2EEY0
A	821	VAL	-	EXPRESSION TAG	UNP Q2EEY0
A	822	PRO	-	EXPRESSION TAG	UNP Q2EEY0
A	823	ARG	-	EXPRESSION TAG	UNP Q2EEY0
B	22	ARG	-	EXPRESSION TAG	UNP Q2EEY0
B	23	SER	-	EXPRESSION TAG	UNP Q2EEY0
B	24	PRO	-	EXPRESSION TAG	UNP Q2EEY0
B	25	TRP	-	EXPRESSION TAG	UNP Q2EEY0
B	818	GLU	-	EXPRESSION TAG	UNP Q2EEY0
B	819	PHE	-	EXPRESSION TAG	UNP Q2EEY0
B	820	LEU	-	EXPRESSION TAG	UNP Q2EEY0
B	821	VAL	-	EXPRESSION TAG	UNP Q2EEY0
B	822	PRO	-	EXPRESSION TAG	UNP Q2EEY0
B	823	ARG	-	EXPRESSION TAG	UNP Q2EEY0

- Molecule 2 is a DNA chain called DNA (5'-D(*CP*AP*TP*GP*AP*CP*GP*TP*TP*CP*CP*T)-3').

Mol	Chain	Residues	Atoms					ZeroOcc	AltConf	Trace
2	F	12	Total	C	N	O	P	0	0	0
			239	116	40	72	11			
2	E	12	Total	C	N	O	P	0	0	0
			239	116	40	72	11			

- Molecule 3 is SUGAR (N-ACETYL-D-GLUCOSAMINE) (three-letter code: NAG) (formula: $C_8H_{15}NO_6$).



Mol	Chain	Residues	Atoms				ZeroOcc	AltConf
3	A	1	Total	C	N	O	0	0
			14	8	1	5		
3	A	1	Total	C	N	O	0	0
			14	8	1	5		
3	A	1	Total	C	N	O	0	0
			14	8	1	5		
3	A	1	Total	C	N	O	0	0
			14	8	1	5		
3	A	1	Total	C	N	O	0	0
			14	8	1	5		
3	B	1	Total	C	N	O	0	0
			14	8	1	5		
3	B	1	Total	C	N	O	0	0
			14	8	1	5		
3	B	1	Total	C	N	O	0	0
			14	8	1	5		

Continued on next page...

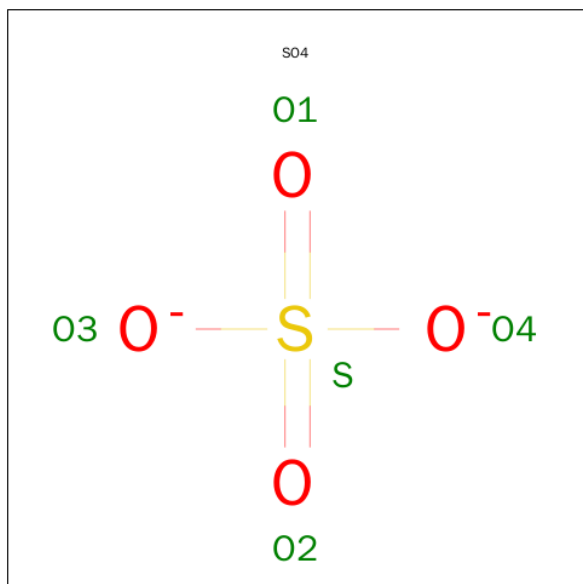
Continued from previous page...

Mol	Chain	Residues	Atoms				ZeroOcc	AltConf
3	B	1	Total	C	N	O	0	0
			14	8	1	5		
3	B	1	Total	C	N	O	0	0
			14	8	1	5		
3	B	1	Total	C	N	O	0	0
			14	8	1	5		
3	B	1	Total	C	N	O	0	0
			14	8	1	5		

- Molecule 4 is a polymer of unknown type called SUGAR (2-MER).

Mol	Chain	Residues	Atoms				ZeroOcc	AltConf
4	A	2	Total	C	N	O	0	0
			28	16	2	10		
4	B	2	Total	C	N	O	0	0
			28	16	2	10		

- Molecule 5 is SULFATE ION (three-letter code: SO4) (formula: O₄S).

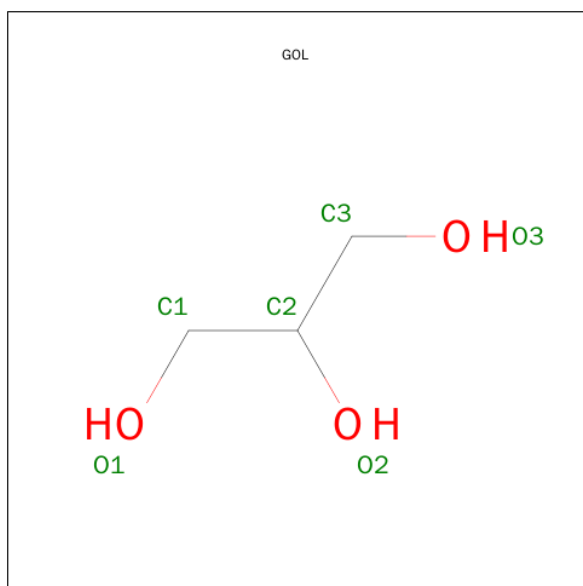


Mol	Chain	Residues	Atoms			ZeroOcc	AltConf
5	A	1	Total	O	S	0	0
			5	4	1		
5	B	1	Total	O	S	0	0
			5	4	1		

- Molecule 6 is SODIUM ION (three-letter code: NA) (formula: Na).

Mol	Chain	Residues	Atoms	ZeroOcc	AltConf
6	B	1	Total Na 1 1	0	0

- Molecule 7 is GLYCEROL (three-letter code: GOL) (formula: $C_3H_8O_3$).



Mol	Chain	Residues	Atoms	ZeroOcc	AltConf
7	B	1	Total C O 6 3 3	0	0

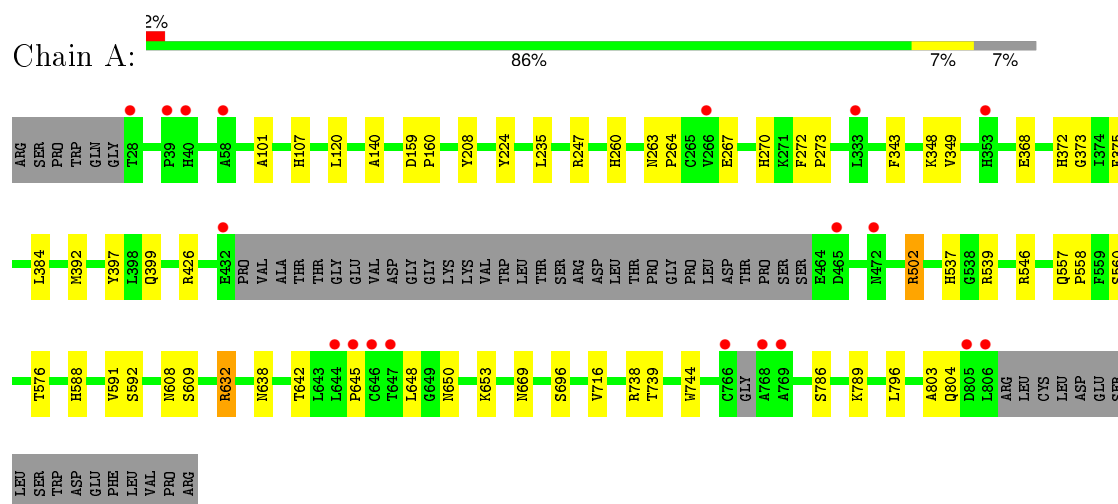
- Molecule 8 is water.

Mol	Chain	Residues	Atoms	ZeroOcc	AltConf
8	A	766	Total O 766 766	0	0
8	B	788	Total O 788 788	0	0
8	F	21	Total O 21 21	0	0
8	E	20	Total O 20 20	0	0

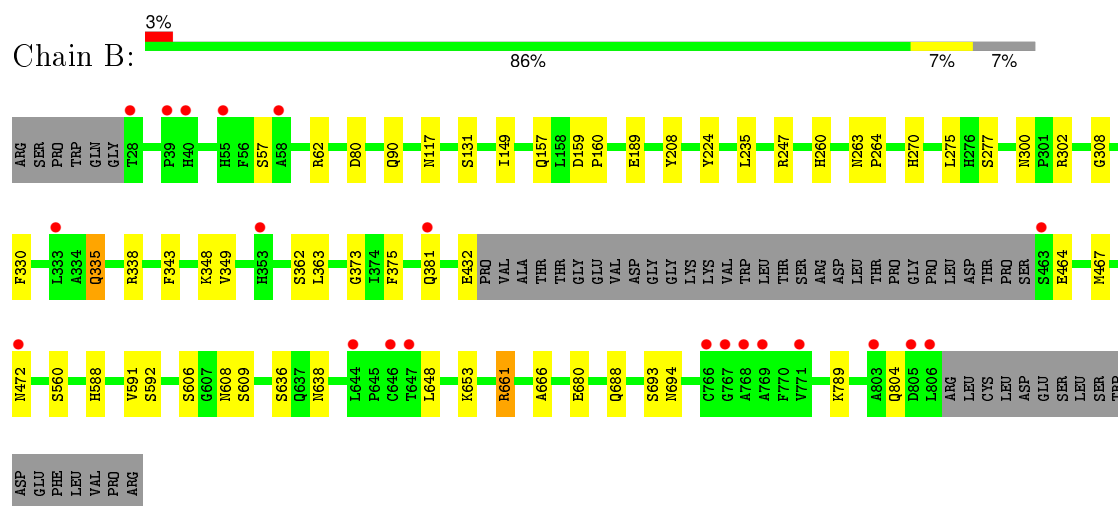
3 Residue-property plots [i](#)

These plots are drawn for all protein, RNA and DNA chains in the entry. The first graphic for a chain summarises the proportions of errors displayed in the second graphic. The second graphic shows the sequence view annotated by issues in geometry and electron density. Residues are color-coded according to the number of geometric quality criteria for which they contain at least one outlier: green = 0, yellow = 1, orange = 2 and red = 3 or more. A red dot above a residue indicates a poor fit to the electron density ($RSRZ > 2$). Stretches of 2 or more consecutive residues without any outlier are shown as a green connector. Residues present in the sample, but not in the model, are shown in grey.

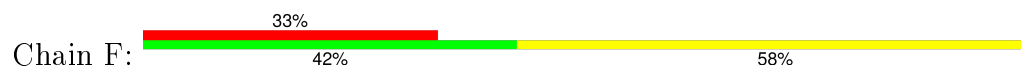
• Molecule 1: Toll-like receptor 9



• Molecule 1: Toll-like receptor 9

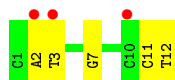


• Molecule 2: DNA (5'-D(*CP*AP*TP*GP*AP*CP*GP*TP*TP*CP*CP*T)-3')





- Molecule 2: DNA (5'-D(*CP*AP*TP*GP*AP*CP*GP*TP*TP*CP*CP*T)-3')



4 Data and refinement statistics

Property	Value	Source
Space group	P 1	Depositor
Cell constants a, b, c, α , β , γ	68.76Å 81.62Å 81.52Å 87.50° 83.50° 85.98°	Depositor
Resolution (Å)	47.49 – 1.60 44.13 – 1.60	Depositor EDS
% Data completeness (in resolution range)	95.6 (47.49-1.60) 94.9 (44.13-1.60)	Depositor EDS
R_{merge}	(Not available)	Depositor
R_{sym}	0.08	Depositor
$\langle I/\sigma(I) \rangle$ ¹	1.89 (at 1.60Å)	Xtriage
Refinement program	REFMAC 5.7.0029	Depositor
R, R_{free}	0.184 , 0.220 0.193 , 0.227	Depositor DCC
R_{free} test set	11134 reflections (5.30%)	DCC
Wilson B-factor (Å ²)	17.9	Xtriage
Anisotropy	0.223	Xtriage
Bulk solvent k_{sol} (e/Å ³), B_{sol} (Å ²)	0.38 , 51.5	EDS
Estimated twinning fraction	0.086 for -h,-l,-k	Xtriage
L-test for twinning ²	$\langle L \rangle = 0.50$, $\langle L^2 \rangle = 0.33$	Xtriage
Outliers	0 of 221165 reflections	Xtriage
F_o, F_c correlation	0.96	EDS
Total number of atoms	14350	wwPDB-VP
Average B, all atoms (Å ²)	22.0	wwPDB-VP

Xtriage's analysis on translational NCS is as follows: *The largest off-origin peak in the Patterson function is 5.14% of the height of the origin peak. No significant pseudotranslation is detected.*

¹Intensities estimated from amplitudes.

²Theoretical values of $\langle |L| \rangle$, $\langle L^2 \rangle$ for acentric reflections are 0.5, 0.375 respectively for untwinned datasets, and 0.333, 0.2 for perfectly twinned datasets.

5 Model quality [i](#)

5.1 Standard geometry [i](#)

Bond lengths and bond angles in the following residue types are not validated in this section: GOL, SO4, NAG, NA

The Z score for a bond length (or angle) is the number of standard deviations the observed value is removed from the expected value. A bond length (or angle) with $|Z| > 5$ is considered an outlier worth inspection. RMSZ is the root-mean-square of all Z scores of the bond lengths (or angles).

Mol	Chain	Bond lengths		Bond angles	
		RMSZ	# $ Z > 5$	RMSZ	# $ Z > 5$
1	A	0.70	0/6152	0.85	7/8370 (0.1%)
1	B	0.70	0/6149	0.83	3/8366 (0.0%)
2	E	0.77	1/266 (0.4%)	1.04	0/408
2	F	0.64	0/266	1.02	2/408 (0.5%)
All	All	0.70	1/12833 (0.0%)	0.85	12/17552 (0.1%)

All (1) bond length outliers are listed below:

Mol	Chain	Res	Type	Atoms	Z	Observed(Å)	Ideal(Å)
2	E	7	DG	O3'-P	-6.95	1.52	1.61

The worst 5 of 12 bond angle outliers are listed below:

Mol	Chain	Res	Type	Atoms	Z	Observed(°)	Ideal(°)
1	B	432	GLU	CB-CA-C	-6.41	97.57	110.40
1	A	392	MET	CG-SD-CE	-5.96	90.66	100.20
1	A	738	ARG	NE-CZ-NH2	-5.80	117.40	120.30
1	A	426	ARG	NE-CZ-NH2	-5.37	117.61	120.30
1	B	661	ARG	NE-CZ-NH1	5.35	122.97	120.30

There are no chirality outliers.

There are no planarity outliers.

5.2 Too-close contacts [i](#)

In the following table, the Non-H and H(model) columns list the number of non-hydrogen atoms and hydrogen atoms in the chain respectively. The H(added) column lists the number of hydrogen atoms added and optimized by MolProbity. The Clashes column lists the number of clashes within the asymmetric unit, whereas Symm-Clashes lists symmetry related clashes.

Mol	Chain	Non-H	H(model)	H(added)	Clashes	Symm-Clashes
1	A	6013	0	6008	41	0
1	B	6009	0	6005	40	0
2	E	239	0	138	9	0
2	F	239	0	138	10	0
3	A	84	0	78	0	0
3	B	98	0	91	0	0
4	A	28	0	25	0	0
4	B	28	0	25	0	0
5	A	5	0	0	0	0
5	B	5	0	0	0	0
6	B	1	0	0	0	0
7	B	6	0	8	1	0
8	A	766	0	0	13	1
8	B	788	0	0	10	2
8	E	20	0	0	0	0
8	F	21	0	0	0	0
All	All	14350	0	12516	97	2

The all-atom clashscore is defined as the number of clashes found per 1000 atoms (including hydrogen atoms). The all-atom clashscore for this structure is 4.

The worst 5 of 97 close contacts within the same asymmetric unit are listed below, sorted by their clash magnitude.

Atom-1	Atom-2	Interatomic distance (Å)	Clash overlap (Å)
1:A:642[B]:THR:OG1	2:F:7:DG:H5''	1.57	1.01
2:F:11:DC:OP1	2:F:12:DT:H73	1.82	0.79
1:B:277[A]:SER:OG	1:B:302:ARG:NH1	2.17	0.78
1:B:653:LYS:HA	1:B:653:LYS:HE2	1.69	0.72
2:E:11:DC:OP1	2:E:12:DT:H73	1.92	0.69

All (2) symmetry-related close contacts are listed below. The label for Atom-2 includes the symmetry operator and encoded unit-cell translations to be applied.

Atom-1	Atom-2	Interatomic distance (Å)	Clash overlap (Å)
8:A:1286:HOH:O	8:B:1285:HOH:O[1_655]	1.71	0.49
8:B:1218:HOH:O	8:B:1753:HOH:O[1_556]	2.13	0.07

5.3 Torsion angles

5.3.1 Protein backbone

In the following table, the Percentiles column shows the percent Ramachandran outliers of the chain as a percentile score with respect to all X-ray entries followed by that with respect to entries of similar resolution.

The Analysed column shows the number of residues for which the backbone conformation was analysed, and the total number of residues.

Mol	Chain	Analysed	Favoured	Allowed	Outliers	Percentiles	
1	A	760/802 (95%)	729 (96%)	30 (4%)	1 (0%)	56	31
1	B	763/802 (95%)	723 (95%)	39 (5%)	1 (0%)	56	31
All	All	1523/1604 (95%)	1452 (95%)	69 (4%)	2 (0%)	56	31

All (2) Ramachandran outliers are listed below:

Mol	Chain	Res	Type
1	B	375	PHE
1	A	375	PHE

5.3.2 Protein sidechains

In the following table, the Percentiles column shows the percent sidechain outliers of the chain as a percentile score with respect to all X-ray entries followed by that with respect to entries of similar resolution.

The Analysed column shows the number of residues for which the sidechain conformation was analysed, and the total number of residues.

Mol	Chain	Analysed	Rotameric	Outliers	Percentiles	
1	A	683/712 (96%)	678 (99%)	5 (1%)	88	78
1	B	683/712 (96%)	676 (99%)	7 (1%)	82	67
All	All	1366/1424 (96%)	1354 (99%)	12 (1%)	86	71

5 of 12 residues with a non-rotameric sidechain are listed below:

Mol	Chain	Res	Type
1	B	57	SER
1	B	62	ARG
1	B	362[A]	SER
1	A	653	LYS

Continued on next page...

Continued from previous page...

Mol	Chain	Res	Type
1	B	335	GLN

Some sidechains can be flipped to improve hydrogen bonding and reduce clashes. All (5) such sidechains are listed below:

Mol	Chain	Res	Type
1	A	260	HIS
1	A	650	ASN
1	B	260	HIS
1	B	270	HIS
1	B	641	HIS

5.3.3 RNA ⓘ

There are no RNA molecules in this entry.

5.4 Non-standard residues in protein, DNA, RNA chains ⓘ

There are no non-standard protein/DNA/RNA residues in this entry.

5.5 Carbohydrates ⓘ

4 carbohydrates are modelled in this entry.

In the following table, the Counts columns list the number of bonds (or angles) for which Mogul statistics could be retrieved, the number of bonds (or angles) that are observed in the model and the number of bonds (or angles) that are defined in the chemical component dictionary. The Link column lists molecule types, if any, to which the group is linked. The Z score for a bond length (or angle) is the number of standard deviations the observed value is removed from the expected value. A bond length (or angle) with $|Z| > 2$ is considered an outlier worth inspection. RMSZ is the root-mean-square of all Z scores of the bond lengths (or angles).

Mol	Type	Chain	Res	Link	Bond lengths			Bond angles		
					Counts	RMSZ	$\# Z > 2$	Counts	RMSZ	$\# Z > 2$
4	NAG	A	907	1,4	14,14,15	0.78	0	15,19,21	1.20	2 (13%)
4	NAG	A	908	4	14,14,15	0.47	0	15,19,21	1.22	1 (6%)
4	NAG	B	908	1,4	14,14,15	0.70	0	15,19,21	1.07	1 (6%)
4	NAG	B	909	4	14,14,15	0.54	0	15,19,21	1.04	2 (13%)

In the following table, the Chirals column lists the number of chiral outliers, the number of chiral

centers analysed, the number of these observed in the model and the number defined in the chemical component dictionary. Similar counts are reported in the Torsion and Rings columns. '-' means no outliers of that kind were identified.

Mol	Type	Chain	Res	Link	Chirals	Torsions	Rings
4	NAG	A	907	1,4	-	0/6/23/26	0/1/1/1
4	NAG	A	908	4	-	0/6/23/26	0/1/1/1
4	NAG	B	908	1,4	-	0/6/23/26	0/1/1/1
4	NAG	B	909	4	-	0/6/23/26	0/1/1/1

There are no bond length outliers.

The worst 5 of 6 bond angle outliers are listed below:

Mol	Chain	Res	Type	Atoms	Z	Observed(°)	Ideal(°)
4	B	908	NAG	C3-C4-C5	-2.41	105.99	110.20
4	A	907	NAG	O7-C7-C8	-2.13	118.15	122.06
4	A	907	NAG	O5-C5-C6	2.18	112.07	107.35
4	B	909	NAG	O5-C5-C6	2.22	112.16	107.35
4	B	909	NAG	O3-C3-C2	2.36	113.79	109.11

There are no chirality outliers.

There are no torsion outliers.

There are no ring outliers.

No monomer is involved in short contacts.

5.6 Ligand geometry ⓘ

Of 17 ligands modelled in this entry, 1 is monoatomic - leaving 16 for Mogul analysis.

In the following table, the Counts columns list the number of bonds (or angles) for which Mogul statistics could be retrieved, the number of bonds (or angles) that are observed in the model and the number of bonds (or angles) that are defined in the chemical component dictionary. The Link column lists molecule types, if any, to which the group is linked. The Z score for a bond length (or angle) is the number of standard deviations the observed value is removed from the expected value. A bond length (or angle) with $|Z| > 2$ is considered an outlier worth inspection. RMSZ is the root-mean-square of all Z scores of the bond lengths (or angles).

Mol	Type	Chain	Res	Link	Bond lengths			Bond angles		
					Counts	RMSZ	$\# Z > 2$	Counts	RMSZ	$\# Z > 2$
3	NAG	A	901	1	14,14,15	0.43	0	15,19,21	1.09	2 (13%)
3	NAG	A	902	1	14,14,15	0.77	1 (7%)	15,19,21	1.10	1 (6%)
3	NAG	A	903	1	14,14,15	0.41	0	15,19,21	1.39	2 (13%)

Mol	Type	Chain	Res	Link	Bond lengths			Bond angles		
					Counts	RMSZ	# Z > 2	Counts	RMSZ	# Z > 2
3	NAG	A	904	1	14,14,15	0.55	0	15,19,21	0.84	0
3	NAG	A	905	1	14,14,15	0.79	1 (7%)	15,19,21	1.03	0
3	NAG	A	906	1	14,14,15	0.57	0	15,19,21	0.94	0
5	SO4	A	909	-	4,4,4	0.82	0	6,6,6	0.36	0
3	NAG	B	901	1	14,14,15	0.69	0	15,19,21	1.31	1 (6%)
3	NAG	B	902	1	14,14,15	0.68	1 (7%)	15,19,21	1.24	2 (13%)
3	NAG	B	903	1	14,14,15	0.47	0	15,19,21	0.82	0
3	NAG	B	904	1	14,14,15	0.79	0	15,19,21	1.29	1 (6%)
3	NAG	B	905	1	14,14,15	0.72	0	15,19,21	0.87	0
3	NAG	B	906	1	14,14,15	0.73	0	15,19,21	1.50	2 (13%)
3	NAG	B	907	1	14,14,15	0.63	0	15,19,21	1.21	1 (6%)
5	SO4	B	911	-	4,4,4	0.81	0	6,6,6	0.36	0
7	GOL	B	912	-	5,5,5	0.25	0	5,5,5	0.55	0

In the following table, the Chirals column lists the number of chiral outliers, the number of chiral centers analysed, the number of these observed in the model and the number defined in the chemical component dictionary. Similar counts are reported in the Torsion and Rings columns. '-' means no outliers of that kind were identified.

Mol	Type	Chain	Res	Link	Chirals	Torsions	Rings
3	NAG	A	901	1	-	0/6/23/26	0/1/1/1
3	NAG	A	902	1	-	0/6/23/26	0/1/1/1
3	NAG	A	903	1	-	0/6/23/26	0/1/1/1
3	NAG	A	904	1	-	0/6/23/26	0/1/1/1
3	NAG	A	905	1	-	0/6/23/26	0/1/1/1
3	NAG	A	906	1	-	0/6/23/26	0/1/1/1
5	SO4	A	909	-	-	0/0/0/0	0/0/0/0
3	NAG	B	901	1	-	0/6/23/26	0/1/1/1
3	NAG	B	902	1	-	0/6/23/26	0/1/1/1
3	NAG	B	903	1	-	0/6/23/26	0/1/1/1
3	NAG	B	904	1	-	0/6/23/26	0/1/1/1
3	NAG	B	905	1	-	0/6/23/26	0/1/1/1
3	NAG	B	906	1	-	0/6/23/26	0/1/1/1
3	NAG	B	907	1	-	0/6/23/26	0/1/1/1
5	SO4	B	911	-	-	0/0/0/0	0/0/0/0
7	GOL	B	912	-	-	0/4/4/4	0/0/0/0

All (3) bond length outliers are listed below:

Mol	Chain	Res	Type	Atoms	Z	Observed(Å)	Ideal(Å)
3	A	905	NAG	O5-C1	-2.35	1.39	1.43

Continued on next page...

Continued from previous page...

Mol	Chain	Res	Type	Atoms	Z	Observed(Å)	Ideal(Å)
3	A	902	NAG	O5-C1	-2.09	1.40	1.43
3	B	902	NAG	C1-C2	2.06	1.55	1.52

The worst 5 of 12 bond angle outliers are listed below:

Mol	Chain	Res	Type	Atoms	Z	Observed(°)	Ideal(°)
3	B	904	NAG	C2-N2-C7	-3.72	118.26	123.04
3	B	902	NAG	O7-C7-C8	-3.10	116.38	122.06
3	B	906	NAG	O7-C7-C8	-2.65	117.20	122.06
3	B	907	NAG	C6-C5-C4	-2.38	107.16	113.02
3	A	902	NAG	O7-C7-C8	-2.30	117.84	122.06

There are no chirality outliers.

There are no torsion outliers.

There are no ring outliers.

1 monomer is involved in 1 short contact:

Mol	Chain	Res	Type	Clashes	Symm-Clashes
7	B	912	GOL	1	0

5.7 Other polymers [i](#)

There are no such residues in this entry.

5.8 Polymer linkage issues [i](#)

There are no chain breaks in this entry.

6 Fit of model and data [i](#)

6.1 Protein, DNA and RNA chains [i](#)

In the following table, the column labelled ‘#RSRZ> 2’ contains the number (and percentage) of RSRZ outliers, followed by percent RSRZ outliers for the chain as percentile scores relative to all X-ray entries and entries of similar resolution. The OWAB column contains the minimum, median, 95th percentile and maximum values of the occupancy-weighted average B-factor per residue. The column labelled ‘Q< 0.9’ lists the number of (and percentage) of residues with an average occupancy less than 0.9.

Mol	Chain	Analysed	<RSRZ>	#RSRZ>2	OWAB(Å ²)	Q<0.9
1	A	747/802 (93%)	0.05	19 (2%) 61 58	10, 19, 35, 64	1 (0%)
1	B	749/802 (93%)	0.04	21 (2%) 56 54	10, 18, 37, 58	2 (0%)
2	E	12/12 (100%)	1.07	3 (25%) 1 1	27, 32, 65, 82	0
2	F	12/12 (100%)	1.03	4 (33%) 0 0	23, 32, 62, 102	0
All	All	1520/1628 (93%)	0.06	47 (3%) 52 50	10, 19, 37, 102	3 (0%)

The worst 5 of 47 RSRZ outliers are listed below:

Mol	Chain	Res	Type	RSRZ
1	A	646	CYS	10.1
1	B	646	CYS	6.6
1	B	806	LEU	5.4
1	B	766	CYS	5.4
1	A	766	CYS	4.8

6.2 Non-standard residues in protein, DNA, RNA chains [i](#)

There are no non-standard protein/DNA/RNA residues in this entry.

6.3 Carbohydrates [i](#)

In the following table, the Atoms column lists the number of modelled atoms in the group and the number defined in the chemical component dictionary. LLDF column lists the quality of electron density of the group with respect to its neighbouring residues in protein, DNA or RNA chains. The B-factors column lists the minimum, median, 95th percentile and maximum values of B factors of atoms in the group. The column labelled ‘Q< 0.9’ lists the number of atoms with occupancy less than 0.9.

Mol	Type	Chain	Res	Atoms	RSCC	RSR	LLDF	B-factors(\AA^2)	Q<0.9
4	NAG	A	907	14/15	0.93	0.12	3.25	16,23,28,32	0
4	NAG	B	908	14/15	0.88	0.11	1.36	17,24,31,33	0
4	NAG	A	908	14/15	0.86	0.17	-	42,56,70,76	0
4	NAG	B	909	14/15	0.78	0.20	-	38,53,63,69	0

6.4 Ligands [i](#)

In the following table, the Atoms column lists the number of modelled atoms in the group and the number defined in the chemical component dictionary. LLDF column lists the quality of electron density of the group with respect to its neighbouring residues in protein, DNA or RNA chains. The B-factors column lists the minimum, median, 95th percentile and maximum values of B factors of atoms in the group. The column labelled 'Q< 0.9' lists the number of atoms with occupancy less than 0.9.

Mol	Type	Chain	Res	Atoms	RSCC	RSR	LLDF	B-factors(\AA^2)	Q<0.9
5	SO4	B	911	5/5	0.85	0.29	12.01	21,34,45,51	0
5	SO4	A	909	5/5	0.87	0.28	11.13	21,35,44,46	0
3	NAG	B	906	14/15	0.83	0.24	6.84	33,46,58,63	0
3	NAG	A	905	14/15	0.76	0.17	5.96	35,49,53,58	0
3	NAG	A	901	14/15	0.82	0.23	3.16	33,38,46,53	0
3	NAG	B	904	14/15	0.85	0.15	2.19	22,31,37,45	0
7	GOL	B	912	6/6	0.80	0.15	1.60	39,46,47,49	0
3	NAG	A	906	14/15	0.92	0.10	0.68	22,26,36,38	0
3	NAG	B	907	14/15	0.90	0.12	0.66	23,29,35,37	0
3	NAG	A	902	14/15	0.93	0.10	0.39	19,23,28,33	0
3	NAG	B	902	14/15	0.92	0.10	0.11	16,20,30,33	0
3	NAG	A	904	14/15	0.82	0.12	0.11	30,40,48,54	0
3	NAG	B	905	14/15	0.82	0.13	-0.06	31,34,45,47	0
6	NA	B	910	1/1	0.98	0.17	-	33,33,33,33	0
3	NAG	A	903	14/15	0.81	0.28	-	36,42,46,62	0
3	NAG	B	901	14/15	0.87	0.23	-	34,39,50,56	0
3	NAG	B	903	14/15	0.82	0.25	-	29,35,44,57	0

6.5 Other polymers [i](#)

There are no such residues in this entry.