



# wwPDB X-ray Structure Validation Summary Report ⓘ

Jan 31, 2016 – 11:15 PM GMT

PDB ID : 1WUI  
Title : Ultra-High resolution Structure Of The Ni-A State Of [Nife]Hydrogenase From Desulfovibrio Vulgaris Miyazaki F  
Authors : Ogata, H.; Hirota, S.; Nakahara, A.; Komori, H.; Shibata, N.; Kato, T.; Kano, K.; Higuchi, Y.  
Deposited on : 2004-12-07  
Resolution : 1.04 Å(reported)

This is a wwPDB X-ray Structure Validation Summary Report for a publicly released PDB entry.  
We welcome your comments at [validation@mail.wwpdb.org](mailto:validation@mail.wwpdb.org)  
A user guide is available at  
<http://wwpdb.org/validation/2016/XrayValidationReportHelp>  
with specific help available everywhere you see the ⓘ symbol.

---

The following versions of software and data (see [references ⓘ](#)) were used in the production of this report:

MolProbity : 4.02b-467  
Mogul : 1.7 (RC4), CSD as536be (2015)  
Xtriage (Phenix) : **NOT EXECUTED**  
EDS : **NOT EXECUTED**  
Percentile statistics : 20151230.v01 (using entries in the PDB archive December 30th 2015)  
Ideal geometry (proteins) : Engh & Huber (2001)  
Ideal geometry (DNA, RNA) : Parkinson et al. (1996)  
Validation Pipeline (wwPDB-VP) : trunk26865

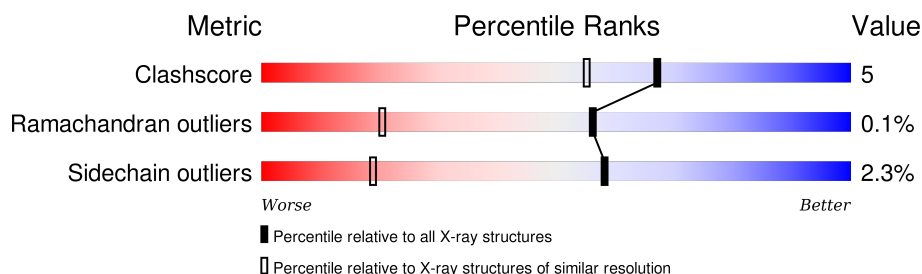
# 1 Overall quality at a glance

The following experimental techniques were used to determine the structure:

## *X-RAY DIFFRACTION*

The reported resolution of this entry is 1.04 Å.

Percentile scores (ranging between 0-100) for global validation metrics of the entry are shown in the following graphic. The table shows the number of entries on which the scores are based.



Metric	Whole archive (#Entries)	Similar resolution (#Entries, resolution range(Å))
Clashscore	102246	1109 (1.10-0.98)
Ramachandran outliers	100387	1041 (1.10-0.98)
Sidechain outliers	100360	1039 (1.10-0.98)

The table below summarises the geometric issues observed across the polymeric chains and their fit to the electron density. The red, orange, yellow and green segments on the lower bar indicate the fraction of residues that contain outliers for  $\geq 3$ , 2, 1 and 0 types of geometric quality criteria. A grey segment represents the fraction of residues that are not modelled. The numeric value for each fraction is indicated below the corresponding segment, with a dot representing fractions  $\leq 5\%$ . The upper red bar (where present) indicates the fraction of residues that have poor fit to the electron density. The numeric value is given above the bar.

Note EDS was not executed.

Mol	Chain	Length	Quality of chain
1	S	267	
2	L	534	

The following table lists non-polymeric compounds, carbohydrate monomers and non-standard residues in protein, DNA, RNA chains that are outliers for geometric or electron-density-fit criteria:

Mol	Type	Chain	Res	Chirality	Geometry	Clashes	Electron density
8	MPD	S	2004	-	-	X	-

## 2 Entry composition

There are 9 unique types of molecules in this entry. The entry contains 7269 atoms, of which 0 are hydrogens and 0 are deuteriums.

In the tables below, the ZeroOcc column contains the number of atoms modelled with zero occupancy, the AltConf column contains the number of residues with at least one atom in alternate conformation and the Trace column contains the number of residues modelled with at most 2 atoms.

- Molecule 1 is a protein called Periplasmic [NiFe] hydrogenase small subunit.

Mol	Chain	Residues	Atoms					ZeroOcc	AltConf	Trace
1	S	267	Total	C	N	O	S	0	1	0
			2020	1283	342	378	17			

- Molecule 2 is a protein called Periplasmic [NiFe] hydrogenase large subunit.

Mol	Chain	Residues	Atoms					ZeroOcc	AltConf	Trace
2	L	534	Total	C	N	O	S	0	2	0
			4188	2681	726	766	15			

There are 2 discrepancies between the modelled and reference sequences:

Chain	Residue	Modelled	Actual	Comment	Reference
L	514	LYS	ASN	SEE REMARK 999	UNP P21852
L	515	LEU	VAL	SEE REMARK 999	UNP P21852

- Molecule 3 is MAGNESIUM ION (three-letter code: MG) (formula: Mg).

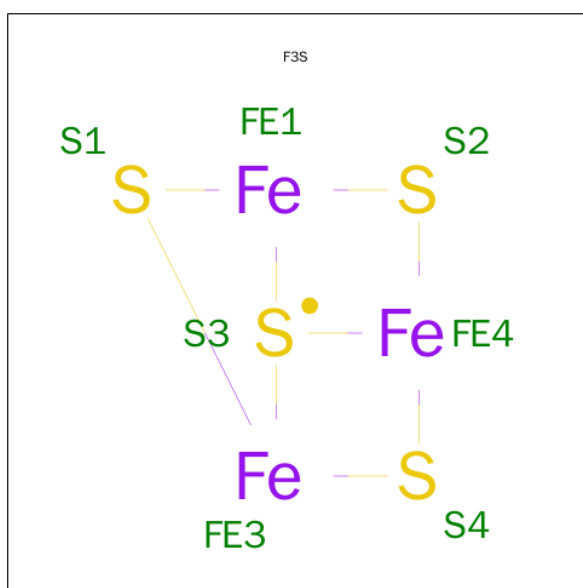
Mol	Chain	Residues	Atoms		ZeroOcc	AltConf
3	L	1	Total	Mg	0	0
			1	1		

- Molecule 4 is IRON/SULFUR CLUSTER (three-letter code: SF4) (formula: Fe<sub>4</sub>S<sub>4</sub>).



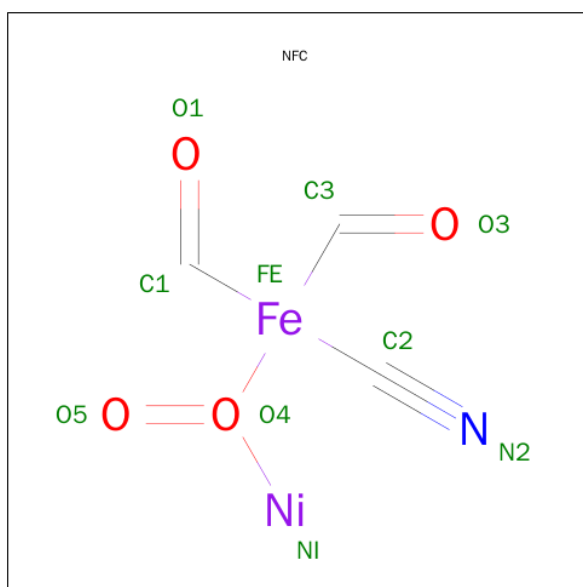
Mol	Chain	Residues	Atoms			ZeroOcc	AltConf
4	S	1	Total	Fe	S	0	0
			8	4	4		
4	S	1	Total	Fe	S	0	0
			8	4	4		

- Molecule 5 is FE3-S4 CLUSTER (three-letter code: F3S) (formula:  $\text{Fe}_3\text{S}_4$ ).



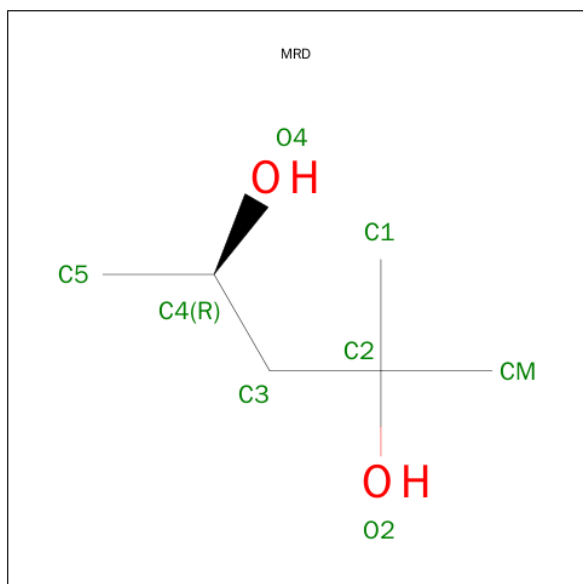
Mol	Chain	Residues	Atoms			ZeroOcc	AltConf
5	S	1	Total	Fe	S	0	0
			7	3	4		

- Molecule 6 is NI-FE ACTIVE CENTER A-FORM (three-letter code: NFC) (formula:  $\text{C}_3\text{H}_2\text{FeNNiO}_4$ ).



Mol	Chain	Residues	Atoms						ZeroOcc	AltConf
6	L	1	Total	C	Fe	N	Ni	O	0	0
			10	3	1	1	1	4		

- Molecule 7 is (4R)-2-METHYLPENTANE-2,4-DIOL (three-letter code: MRD) (formula:  $C_6H_{14}O_2$ ).



Mol	Chain	Residues	Atoms			ZeroOcc	AltConf
7	L	1	Total	C	O	0	0
			8	6	2		

- Molecule 8 is (4S)-2-METHYL-2,4-PENTANEDIOL (three-letter code: MPD) (formula:  $C_6H_{14}O_2$ ).



Mol	Chain	Residues	Atoms			ZeroOcc	AltConf
8	S	1	Total	C	O	0	0
			8	6	2		
8	S	1	Total	C	O	0	0
			8	6	2		
8	S	1	Total	C	O	0	0
			8	6	2		

- Molecule 9 is water.

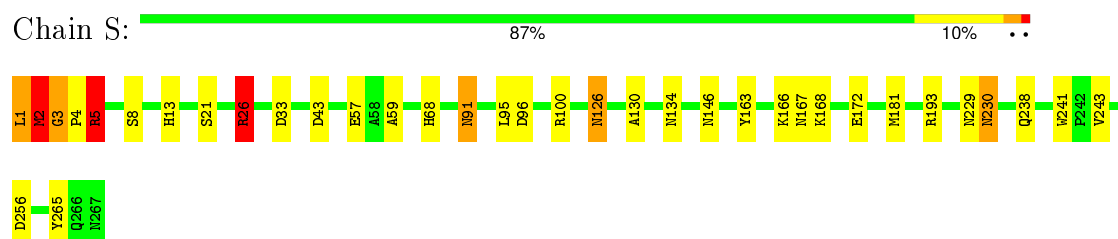
Mol	Chain	Residues	Atoms		ZeroOcc	AltConf
9	L	675	Total	O	0	0
			675	675		
9	S	320	Total	O	0	0
			320	320		

### 3 Residue-property plots

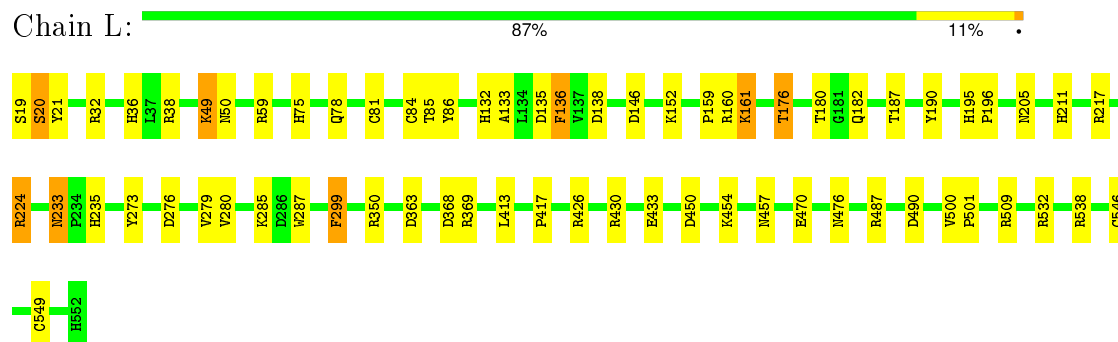
These plots are drawn for all protein, RNA and DNA chains in the entry. The first graphic for a chain summarises the proportions of errors displayed in the second graphic. The second graphic shows the sequence view annotated by issues in geometry and electron density. Residues are color-coded according to the number of geometric quality criteria for which they contain at least one outlier: green = 0, yellow = 1, orange = 2 and red = 3 or more. A red dot above a residue indicates a poor fit to the electron density ( $\text{RSRZ} > 2$ ). Stretches of 2 or more consecutive residues without any outlier are shown as a green connector. Residues present in the sample, but not in the model, are shown in grey.

Note EDS was not executed.

- Molecule 1: Periplasmic [NiFe] hydrogenase small subunit



- Molecule 2: Periplasmic [NiFe] hydrogenase large subunit



## 4 Data and refinement statistics

Xtriage (Phenix) and EDS were not executed - this section will therefore be incomplete.

Property	Value	Source
Space group	P 21 21 21	Depositor
Cell constants a, b, c, $\alpha$ , $\beta$ , $\gamma$	98.07Å 125.97Å 66.38Å 90.00° 90.00° 90.00°	Depositor
Resolution (Å)	20.00 – 1.04	Depositor
% Data completeness (in resolution range)	(Not available) (20.00-1.04)	Depositor
$R_{merge}$	0.07	Depositor
$R_{sym}$	(Not available)	Depositor
Refinement program	SHELXL-97	Depositor
R, $R_{free}$	0.096 , 0.134	Depositor
Estimated twinning fraction	No twinning to report.	Xtriage
Total number of atoms	7269	wwPDB-VP
Average B, all atoms (Å <sup>2</sup> )	15.0	wwPDB-VP



## 5 Model quality

### 5.1 Standard geometry

Bond lengths and bond angles in the following residue types are not validated in this section: CSO, NFC, SF4, MG, F3S, MRD, MPD

The Z score for a bond length (or angle) is the number of standard deviations the observed value is removed from the expected value. A bond length (or angle) with  $|Z| > 5$  is considered an outlier worth inspection. RMSZ is the root-mean-square of all Z scores of the bond lengths (or angles).

Mol	Chain	Bond lengths		Bond angles	
		RMSZ	$\# Z  > 5$	RMSZ	$\# Z  > 5$
1	S	0.85	1/2083 (0.0%)	1.38	26/2841 (0.9%)
2	L	0.84	1/4295 (0.0%)	1.28	49/5837 (0.8%)
All	All	0.85	2/6378 (0.0%)	1.31	75/8678 (0.9%)

Chiral center outliers are detected by calculating the chiral volume of a chiral center and verifying if the center is modelled as a planar moiety or with the opposite hand. A planarity outlier is detected by checking planarity of atoms in a peptide group, atoms in a mainchain group or atoms of a sidechain that are expected to be planar.

Mol	Chain	#Chirality outliers	#Planarity outliers
1	S	0	2

All (2) bond length outliers are listed below:

Mol	Chain	Res	Type	Atoms	Z	Observed(Å)	Ideal(Å)
2	L	433	GLU	CB-CG	-10.48	1.32	1.52
1	S	3	GLY	N-CA	-5.42	1.38	1.46

The worst 5 of 75 bond angle outliers are listed below:

Mol	Chain	Res	Type	Atoms	Z	Observed(°)	Ideal(°)
1	S	1	LEU	CA-CB-CG	20.59	162.66	115.30
2	L	224	ARG	NE-CZ-NH2	15.30	127.95	120.30
1	S	100	ARG	CD-NE-CZ	14.57	143.99	123.60
2	L	509	ARG	NE-CZ-NH1	12.56	126.58	120.30
1	S	2	MET	C-N-CA	12.47	148.49	122.30

There are no chirality outliers.

All (2) planarity outliers are listed below:

Mol	Chain	Res	Type	Group
1	S	2	MET	Peptide
1	S	26	ARG	Sidechain

## 5.2 Too-close contacts ⓘ

In the following table, the Non-H and H(model) columns list the number of non-hydrogen atoms and hydrogen atoms in the chain respectively. The H(added) column lists the number of hydrogen atoms added and optimized by MolProbity. The Clashes column lists the number of clashes within the asymmetric unit, whereas Symm-Clashes lists symmetry related clashes.

Mol	Chain	Non-H	H(model)	H(added)	Clashes	Symm-Clashes
1	S	2020	0	1947	31	0
2	L	4188	0	4132	37	0
3	L	1	0	0	0	0
4	S	16	0	0	0	0
5	S	7	0	0	0	0
6	L	10	0	0	0	0
7	L	8	0	14	2	0
8	S	24	0	42	7	0
9	L	675	0	0	6	0
9	S	320	0	0	4	0
All	All	7269	0	6135	59	0

The all-atom clashscore is defined as the number of clashes found per 1000 atoms (including hydrogen atoms). The all-atom clashscore for this structure is 5.

The worst 5 of 59 close contacts within the same asymmetric unit are listed below, sorted by their clash magnitude.

Atom-1	Atom-2	Interatomic distance (Å)	Clash overlap (Å)
1:S:2:MET:HB2	2:L:182:GLN:HE21	1.17	1.08
1:S:146:ASN:HD21	8:S:2004:MPD:H13	1.25	0.98
1:S:2:MET:HA	2:L:182:GLN:HG2	1.50	0.92
1:S:2:MET:HG2	1:S:8:SER:HB2	1.63	0.80
1:S:1:LEU:HA	2:L:187:THR:OG1	1.81	0.79

There are no symmetry-related clashes.

## 5.3 Torsion angles [i](#)

### 5.3.1 Protein backbone [i](#)

In the following table, the Percentiles column shows the percent Ramachandran outliers of the chain as a percentile score with respect to all X-ray entries followed by that with respect to entries of similar resolution.

The Analysed column shows the number of residues for which the backbone conformation was analysed, and the total number of residues.

Mol	Chain	Analysed	Favoured	Allowed	Outliers	Percentiles	
1	S	266/267 (100%)	257 (97%)	8 (3%)	1 (0%)	39	12
2	L	532/534 (100%)	519 (98%)	13 (2%)	0	100	100
All	All	798/801 (100%)	776 (97%)	21 (3%)	1 (0%)	56	20

All (1) Ramachandran outliers are listed below:

Mol	Chain	Res	Type
1	S	5	ARG

### 5.3.2 Protein sidechains [i](#)

In the following table, the Percentiles column shows the percent sidechain outliers of the chain as a percentile score with respect to all X-ray entries followed by that with respect to entries of similar resolution.

The Analysed column shows the number of residues for which the sidechain conformation was analysed, and the total number of residues.

Mol	Chain	Analysed	Rotameric	Outliers	Percentiles	
1	S	214/213 (100%)	208 (97%)	6 (3%)	51	13
2	L	438/436 (100%)	429 (98%)	9 (2%)	61	21
All	All	652/649 (100%)	637 (98%)	15 (2%)	58	19

5 of 15 residues with a non-rotameric sidechain are listed below:

Mol	Chain	Res	Type
2	L	19	SER
2	L	49	LYS
2	L	233	ASN
1	S	230	ASN
2	L	161	LYS

Some sidechains can be flipped to improve hydrogen bonding and reduce clashes. 5 of 30 such sidechains are listed below:

Mol	Chain	Res	Type
2	L	75	HIS
2	L	132	HIS
2	L	457	ASN
2	L	113	ASN
2	L	188	ASN

### 5.3.3 RNA ⓘ

There are no RNA molecules in this entry.

## 5.4 Non-standard residues in protein, DNA, RNA chains ⓘ

2 non-standard protein/DNA/RNA residues are modelled in this entry.

In the following table, the Counts columns list the number of bonds (or angles) for which Mogul statistics could be retrieved, the number of bonds (or angles) that are observed in the model and the number of bonds (or angles) that are defined in the chemical component dictionary. The Link column lists molecule types, if any, to which the group is linked. The Z score for a bond length (or angle) is the number of standard deviations the observed value is removed from the expected value. A bond length (or angle) with  $|Z| > 2$  is considered an outlier worth inspection. RMSZ is the root-mean-square of all Z scores of the bond lengths (or angles).

Mol	Type	Chain	Res	Link	Bond lengths			Bond angles		
					Counts	RMSZ	$\# Z  > 2$	Counts	RMSZ	$\# Z  > 2$
2	CSO	L	546	2,6	3,6,7	0.46	0	1,6,8	1.60	0
2	CSO	L	84	2,6	3,6,7	0.48	0	1,6,8	1.16	0

In the following table, the Chirals column lists the number of chiral outliers, the number of chiral centers analysed, the number of these observed in the model and the number defined in the chemical component dictionary. Similar counts are reported in the Torsion and Rings columns. '-' means no outliers of that kind were identified.

Mol	Type	Chain	Res	Link	Chirals	Torsions	Rings
2	CSO	L	546	2,6	-	0/1/5/7	0/0/0/0
2	CSO	L	84	2,6	-	0/1/5/7	0/0/0/0

There are no bond length outliers.

There are no bond angle outliers.

There are no chirality outliers.

There are no torsion outliers.

There are no ring outliers.

2 monomers are involved in 5 short contacts:

Mol	Chain	Res	Type	Clashes	Symm-Clashes
2	L	546	CSO	3	0
2	L	84	CSO	2	0

## 5.5 Carbohydrates [i](#)

There are no carbohydrates in this entry.

## 5.6 Ligand geometry [i](#)

Of 9 ligands modelled in this entry, 1 is monoatomic - leaving 8 for Mogul analysis.

In the following table, the Counts columns list the number of bonds (or angles) for which Mogul statistics could be retrieved, the number of bonds (or angles) that are observed in the model and the number of bonds (or angles) that are defined in the chemical component dictionary. The Link column lists molecule types, if any, to which the group is linked. The Z score for a bond length (or angle) is the number of standard deviations the observed value is removed from the expected value. A bond length (or angle) with  $|Z| > 2$  is considered an outlier worth inspection. RMSZ is the root-mean-square of all Z scores of the bond lengths (or angles).

Mol	Type	Chain	Res	Link	Bond lengths			Bond angles		
					Counts	RMSZ	$\# Z  > 2$	Counts	RMSZ	$\# Z  > 2$
6	NFC	L	1004	2	1,9,9	1.57	0	0,12,12	0.00	-
7	MRD	L	2006	-	6,7,7	0.49	0	7,10,10	1.01	0
4	SF4	S	1001	1	0,12,12	0.00	-	0,24,24	0.00	-
4	SF4	S	1002	1	0,12,12	0.00	-	0,24,24	0.00	-
5	F3S	S	1003	1	0,9,9	0.00	-	0,15,15	0.00	-
8	MPD	S	2001	-	6,7,7	0.45	0	7,10,10	0.70	0
8	MPD	S	2004	-	6,7,7	0.81	0	7,10,10	0.82	0
8	MPD	S	2007	-	6,7,7	0.69	0	7,10,10	0.81	0

In the following table, the Chirals column lists the number of chiral outliers, the number of chiral centers analysed, the number of these observed in the model and the number defined in the chemical component dictionary. Similar counts are reported in the Torsion and Rings columns. '-' means no outliers of that kind were identified.

Mol	Type	Chain	Res	Link	Chirals	Torsions	Rings
6	NFC	L	1004	2	-	0/0/15/15	0/0/0/0
7	MRD	L	2006	-	-	0/5/5/5	0/0/0/0

*Continued on next page...*

*Continued from previous page...*

Mol	Type	Chain	Res	Link	Chirals	Torsions	Rings
4	SF4	S	1001	1	-	0/0/48/48	2/6/5/5
4	SF4	S	1002	1	-	0/0/48/48	2/6/5/5
5	F3S	S	1003	1	-	0/0/24/24	0/0/3/3
8	MPD	S	2001	-	-	0/5/5/5	0/0/0/0
8	MPD	S	2004	-	-	0/5/5/5	0/0/0/0
8	MPD	S	2007	-	-	0/5/5/5	0/0/0/0

There are no bond length outliers.

There are no bond angle outliers.

There are no chirality outliers.

There are no torsion outliers.

All (4) ring outliers are listed below:

Mol	Chain	Res	Type	Atoms
4	S	1001	SF4	FE3-FE4-S1-S2
4	S	1001	SF4	FE1-FE2-S3-S4
4	S	1002	SF4	FE1-FE2-S3-S4
4	S	1002	SF4	FE3-FE4-S1-S2

2 monomers are involved in 9 short contacts:

Mol	Chain	Res	Type	Clashes	Symm-Clashes
7	L	2006	MRD	2	0
8	S	2004	MPD	7	0

## 5.7 Other polymers [i](#)

There are no such residues in this entry.

## 5.8 Polymer linkage issues [i](#)

There are no chain breaks in this entry.

## 6 Fit of model and data

### 6.1 Protein, DNA and RNA chains

EDS was not executed - this section will therefore be empty.

### 6.2 Non-standard residues in protein, DNA, RNA chains

EDS was not executed - this section will therefore be empty.

### 6.3 Carbohydrates

EDS was not executed - this section will therefore be empty.

### 6.4 Ligands

EDS was not executed - this section will therefore be empty.

### 6.5 Other polymers

EDS was not executed - this section will therefore be empty.