



# wwPDB X-ray Structure Validation Summary Report ⓘ

Feb 1, 2016 – 02:20 PM GMT

PDB ID : 3WX9  
Title : Crystal structure of Pyrococcus horikoshii kynurenine aminotransferase in complex with PMP, GLA, 4AD, 2OG, GLU and KYA  
Authors : Okada, K.; Angkawidjaja, C.; Koga, Y.; Kanaya, S.  
Deposited on : 2014-07-28  
Resolution : 1.58 Å(reported)

This is a wwPDB X-ray Structure Validation Summary Report for a publicly released PDB entry.  
We welcome your comments at [validation@mail.wwpdb.org](mailto:validation@mail.wwpdb.org)  
A user guide is available at  
<http://wwpdb.org/validation/2016/XrayValidationReportHelp>  
with specific help available everywhere you see the ⓘ symbol.

---

The following versions of software and data (see [references ⓘ](#)) were used in the production of this report:

MolProbity : 4.02b-467  
Mogul : 1.7 (RC4), CSD as536be (2015)  
Xtriage (Phenix) : 1.9-1692  
EDS : rb-20026688  
Percentile statistics : 20151230.v01 (using entries in the PDB archive December 30th 2015)  
Refmac : 5.8.0135  
CCP4 : 6.5.0  
Ideal geometry (proteins) : Engh & Huber (2001)  
Ideal geometry (DNA, RNA) : Parkinson et al. (1996)  
Validation Pipeline (wwPDB-VP) : trunk26865

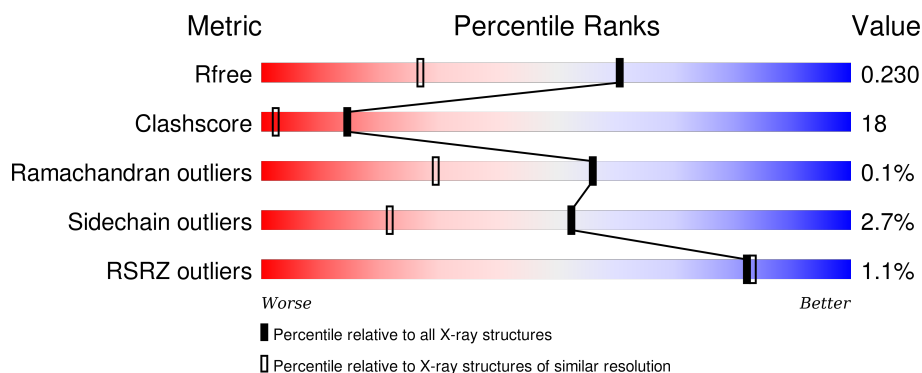
# 1 Overall quality at a glance ⓘ

The following experimental techniques were used to determine the structure:

## *X-RAY DIFFRACTION*

The reported resolution of this entry is 1.58 Å.

Percentile scores (ranging between 0-100) for global validation metrics of the entry are shown in the following graphic. The table shows the number of entries on which the scores are based.



Metric	Whole archive (#Entries)	Similar resolution (#Entries, resolution range(Å))
$R_{free}$	91344	3815 (1.60-1.56)
Clashscore	102246	4131 (1.60-1.56)
Ramachandran outliers	100387	4021 (1.60-1.56)
Sidechain outliers	100360	4018 (1.60-1.56)
RSRZ outliers	91569	3823 (1.60-1.56)

The table below summarises the geometric issues observed across the polymeric chains and their fit to the electron density. The red, orange, yellow and green segments on the lower bar indicate the fraction of residues that contain outliers for  $\geq 3$ , 2, 1 and 0 types of geometric quality criteria. A grey segment represents the fraction of residues that are not modelled. The numeric value for each fraction is indicated below the corresponding segment, with a dot representing fractions  $\leq 5\%$ . The upper red bar (where present) indicates the fraction of residues that have poor fit to the electron density. The numeric value is given above the bar.

Mol	Chain	Length	Quality of chain
1	A	448	<div> <div style="width: 100%; height: 10px; background: linear-gradient(to right, red 1%, orange 1%, yellow 16%, green 73%, grey 10%);"></div> <div style="display: flex; justify-content: space-between; width: 100%;"> <span>%</span> <span>73%</span> <span>16%</span> <span>• 10%</span> </div> </div>
1	C	448	<div> <div style="width: 100%; height: 10px; background: linear-gradient(to right, red 1%, orange 1%, yellow 15%, green 73%, grey 10%);"></div> <div style="display: flex; justify-content: space-between; width: 100%;"> <span>%</span> <span>73%</span> <span>15%</span> <span>•• 10%</span> </div> </div>

The following table lists non-polymeric compounds, carbohydrate monomers and non-standard residues in protein, DNA, RNA chains that are outliers for geometric or electron-density-fit criteria:

Mol	Type	Chain	Res	Chirality	Geometry	Clashes	Electron density
3	AKG	A	502	-	-	X	X
3	AKG	C	502	-	-	X	X
4	G9A	A	503	-	-	X	X
4	G9A	C	503	-	-	X	X
5	3EE	A	504	-	-	X	X
5	3EE	C	504	-	-	X	X
6	GLU	A	505	-	-	X	X
7	KYA	C	505	-	-	X	X

## 2 Entry composition

There are 8 unique types of molecules in this entry. The entry contains 7447 atoms, of which 0 are hydrogens and 0 are deuteriums.

In the tables below, the ZeroOcc column contains the number of atoms modelled with zero occupancy, the AltConf column contains the number of residues with at least one atom in alternate conformation and the Trace column contains the number of residues modelled with at most 2 atoms.

- Molecule 1 is a protein called Putative uncharacterized protein PH0207.

Mol	Chain	Residues	Atoms					ZeroOcc	AltConf	Trace
1	A	404	Total	C	N	O	S	0	0	0
			3247	2093	536	602	16			
1	C	404	Total	C	N	O	S	0	0	0
			3247	2093	536	602	16			

There are 40 discrepancies between the modelled and reference sequences:

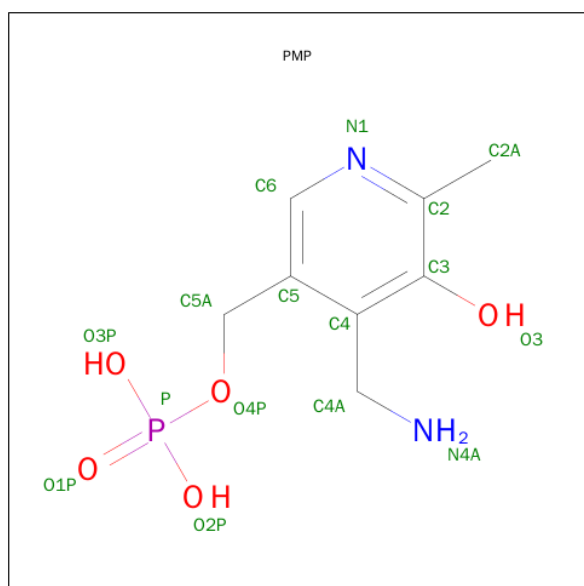
Chain	Residue	Modelled	Actual	Comment	Reference
A	-19	MET	-	EXPRESSION TAG	UNP O57946
A	-18	GLY	-	EXPRESSION TAG	UNP O57946
A	-17	SER	-	EXPRESSION TAG	UNP O57946
A	-16	SER	-	EXPRESSION TAG	UNP O57946
A	-15	HIS	-	EXPRESSION TAG	UNP O57946
A	-14	HIS	-	EXPRESSION TAG	UNP O57946
A	-13	HIS	-	EXPRESSION TAG	UNP O57946
A	-12	HIS	-	EXPRESSION TAG	UNP O57946
A	-11	HIS	-	EXPRESSION TAG	UNP O57946
A	-10	HIS	-	EXPRESSION TAG	UNP O57946
A	-9	SER	-	EXPRESSION TAG	UNP O57946
A	-8	SER	-	EXPRESSION TAG	UNP O57946
A	-7	GLY	-	EXPRESSION TAG	UNP O57946
A	-6	LEU	-	EXPRESSION TAG	UNP O57946
A	-5	VAL	-	EXPRESSION TAG	UNP O57946
A	-4	PRO	-	EXPRESSION TAG	UNP O57946
A	-3	ARG	-	EXPRESSION TAG	UNP O57946
A	-2	GLY	-	EXPRESSION TAG	UNP O57946
A	-1	SER	-	EXPRESSION TAG	UNP O57946
A	0	HIS	-	EXPRESSION TAG	UNP O57946
C	-19	MET	-	EXPRESSION TAG	UNP O57946
C	-18	GLY	-	EXPRESSION TAG	UNP O57946
C	-17	SER	-	EXPRESSION TAG	UNP O57946
C	-16	SER	-	EXPRESSION TAG	UNP O57946
C	-15	HIS	-	EXPRESSION TAG	UNP O57946

*Continued on next page...*

Continued from previous page...

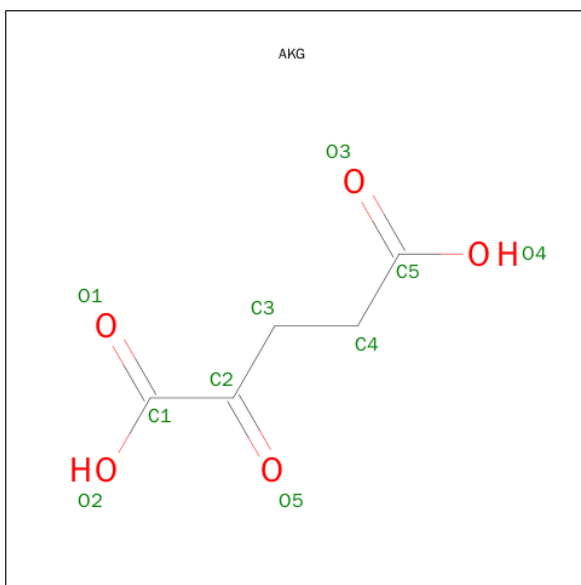
Chain	Residue	Modelled	Actual	Comment	Reference
C	-14	HIS	-	EXPRESSION TAG	UNP O57946
C	-13	HIS	-	EXPRESSION TAG	UNP O57946
C	-12	HIS	-	EXPRESSION TAG	UNP O57946
C	-11	HIS	-	EXPRESSION TAG	UNP O57946
C	-10	HIS	-	EXPRESSION TAG	UNP O57946
C	-9	SER	-	EXPRESSION TAG	UNP O57946
C	-8	SER	-	EXPRESSION TAG	UNP O57946
C	-7	GLY	-	EXPRESSION TAG	UNP O57946
C	-6	LEU	-	EXPRESSION TAG	UNP O57946
C	-5	VAL	-	EXPRESSION TAG	UNP O57946
C	-4	PRO	-	EXPRESSION TAG	UNP O57946
C	-3	ARG	-	EXPRESSION TAG	UNP O57946
C	-2	GLY	-	EXPRESSION TAG	UNP O57946
C	-1	SER	-	EXPRESSION TAG	UNP O57946
C	0	HIS	-	EXPRESSION TAG	UNP O57946

- Molecule 2 is 4'-DEOXY-4'-AMINOPYRIDOXAL-5'-PHOSPHATE (three-letter code: PMP) (formula:  $C_8H_{13}N_2O_5P$ ).



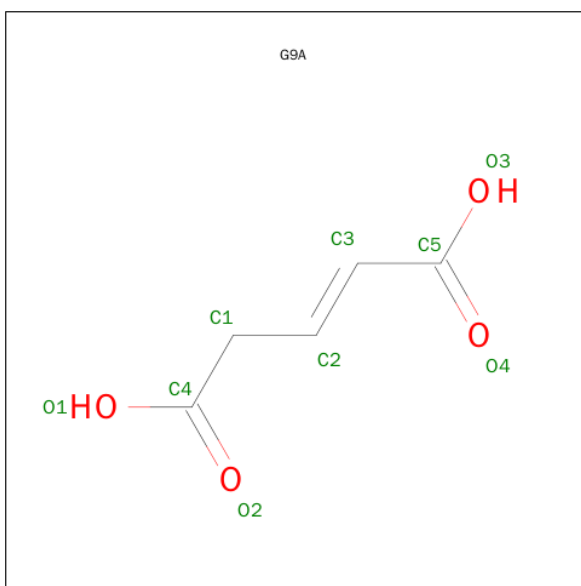
Mol	Chain	Residues	Atoms					ZeroOcc	AltConf
2	A	1	Total	C	N	O	P	0	0
			16	8	2	5	1		
2	C	1	Total	C	N	O	P	0	0
			16	8	2	5	1		

- Molecule 3 is 2-OXOGLUTARIC ACID (three-letter code: AKG) (formula:  $C_5H_6O_5$ ).



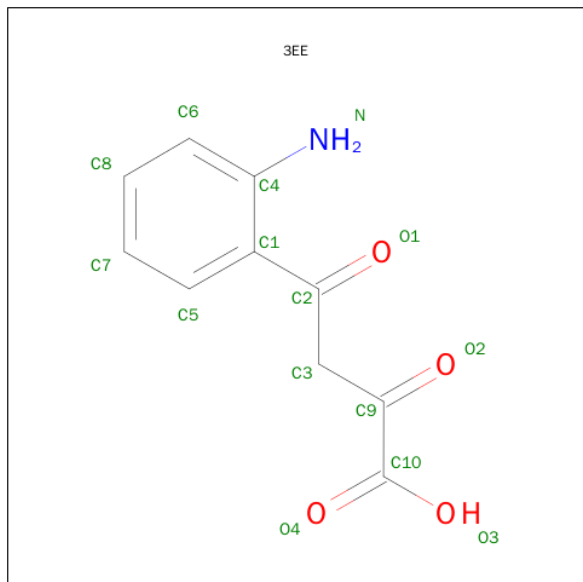
Mol	Chain	Residues	Atoms			ZeroOcc	AltConf
3	A	1	Total	C	O	0	0
			10	5	5		
3	C	1	Total	C	O	0	0
			10	5	5		

- Molecule 4 is (2E)-PENT-2-ENEDIOIC ACID (three-letter code: G9A) (formula: C<sub>5</sub>H<sub>6</sub>O<sub>4</sub>).



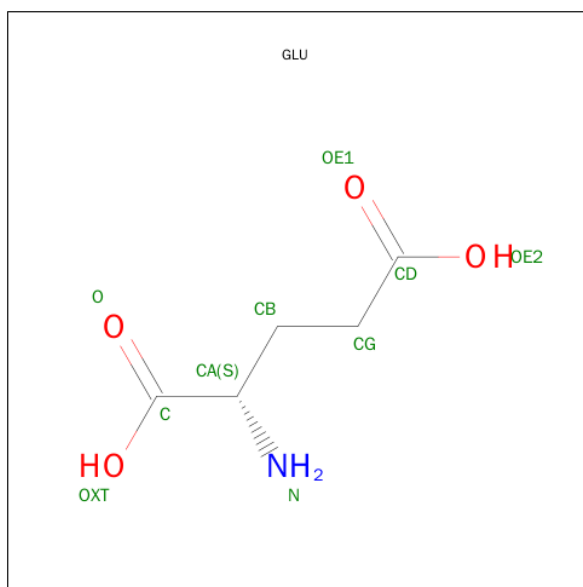
Mol	Chain	Residues	Atoms			ZeroOcc	AltConf
4	A	1	Total	C	O	0	0
			9	5	4		
4	C	1	Total	C	O	0	0
			9	5	4		

- Molecule 5 is 4-(2-AMINOPHENYL)-2,4-DIOXOBUTANOIC ACID (three-letter code: 3EE) (formula:  $C_{10}H_9NO_4$ ).



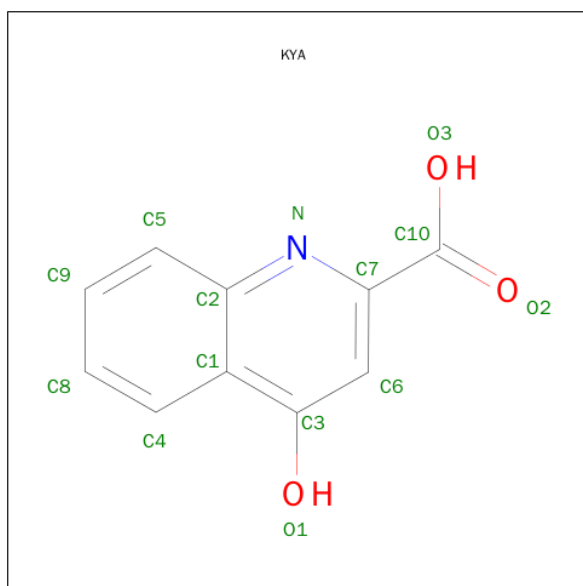
Mol	Chain	Residues	Atoms				ZeroOcc	AltConf
5	A	1	Total	C	N	O	0	0
			15	10	1	4		
5	C	1	Total	C	N	O	0	0
			15	10	1	4		

- Molecule 6 is GLUTAMIC ACID (three-letter code: GLU) (formula:  $C_5H_9NO_4$ ).



Mol	Chain	Residues	Atoms				ZeroOcc	AltConf
6	A	1	Total	C	N	O	0	0
			10	5	1	4		

- Molecule 7 is 4-HYDROXYQUINOLINE-2-CARBOXYLIC ACID (three-letter code: KYA) (formula:  $C_{10}H_7NO_3$ ).



Mol	Chain	Residues	Atoms				ZeroOcc	AltConf
7	C	1	Total	C	N	O	0	0
			14	10	1	3		

- Molecule 8 is water.

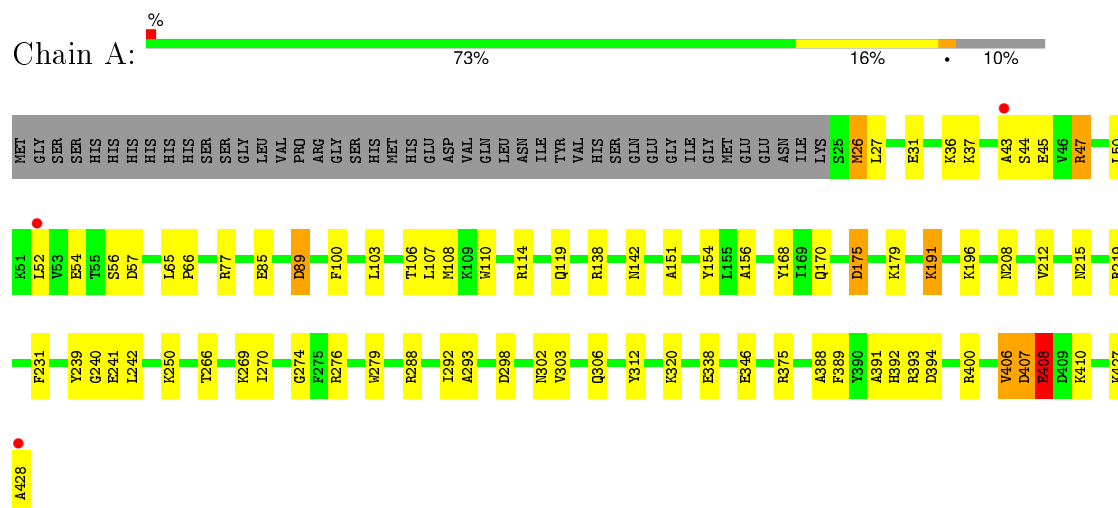
Mol	Chain	Residues	Atoms		ZeroOcc	AltConf
8	A	409	Total	O	0	0
			409	409		
8	C	420	Total	O	0	0
			420	420		



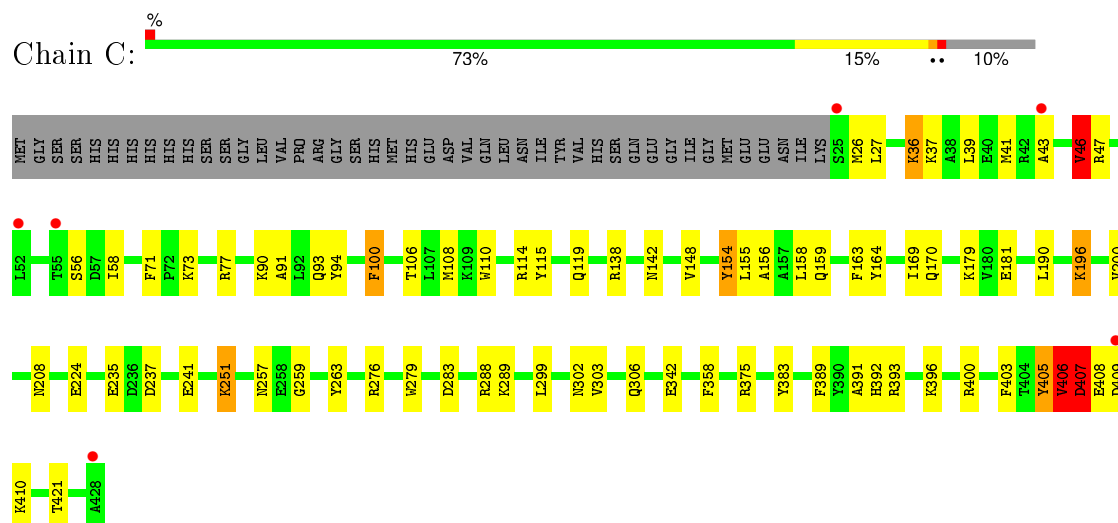
### 3 Residue-property plots [i](#)

These plots are drawn for all protein, RNA and DNA chains in the entry. The first graphic for a chain summarises the proportions of errors displayed in the second graphic. The second graphic shows the sequence view annotated by issues in geometry and electron density. Residues are color-coded according to the number of geometric quality criteria for which they contain at least one outlier: green = 0, yellow = 1, orange = 2 and red = 3 or more. A red dot above a residue indicates a poor fit to the electron density ( $\text{RSRZ} > 2$ ). Stretches of 2 or more consecutive residues without any outlier are shown as a green connector. Residues present in the sample, but not in the model, are shown in grey.

- Molecule 1: Putative uncharacterized protein PH0207



- Molecule 1: Putative uncharacterized protein PH0207



## 4 Data and refinement statistics

Property	Value	Source
Space group	C 1 2 1	Depositor
Cell constants a, b, c, $\alpha$ , $\beta$ , $\gamma$	85.77Å 71.00Å 136.70Å 90.00° 90.02° 90.00°	Depositor
Resolution (Å)	50.00 – 1.58 27.35 – 1.58	Depositor EDS
% Data completeness (in resolution range)	96.6 (50.00-1.58) 96.5 (27.35-1.58)	Depositor EDS
$R_{merge}$	0.05	Depositor
$R_{sym}$	(Not available)	Depositor
$\langle I/\sigma(I) \rangle$ <sup>1</sup>	2.06 (at 1.57Å)	Xtriage
Refinement program	REFMAC 5.5.0102	Depositor
R, $R_{free}$	0.180 , 0.230 0.183 , 0.230	Depositor DCC
$R_{free}$ test set	5444 reflections (5.26%)	DCC
Wilson B-factor (Å <sup>2</sup> )	21.5	Xtriage
Anisotropy	0.033	Xtriage
Bulk solvent $k_{sol}$ (e/Å <sup>3</sup> ), $B_{sol}$ (Å <sup>2</sup> )	0.38 , 43.6	EDS
Estimated twinning fraction	0.480 for -h,-k,l	Xtriage
L-test for twinning <sup>2</sup>	$\langle  L  \rangle = 0.49$ , $\langle L^2 \rangle = 0.33$	Xtriage
Outliers	0 of 109166 reflections	Xtriage
$F_o, F_c$ correlation	0.97	EDS
Total number of atoms	7447	wwPDB-VP
Average B, all atoms (Å <sup>2</sup> )	25.0	wwPDB-VP

Xtriage's analysis on translational NCS is as follows: *The largest off-origin peak in the Patterson function is 4.70% of the height of the origin peak. No significant pseudotranslation is detected.*

<sup>1</sup>Intensities estimated from amplitudes.

<sup>2</sup>Theoretical values of  $\langle |L| \rangle$ ,  $\langle L^2 \rangle$  for acentric reflections are 0.5, 0.375 respectively for untwinned datasets, and 0.333, 0.2 for perfectly twinned datasets.

## 5 Model quality [i](#)

### 5.1 Standard geometry [i](#)

Bond lengths and bond angles in the following residue types are not validated in this section: AKG, KYA, PMP, 3EE, G9A

The Z score for a bond length (or angle) is the number of standard deviations the observed value is removed from the expected value. A bond length (or angle) with  $|Z| > 5$  is considered an outlier worth inspection. RMSZ is the root-mean-square of all Z scores of the bond lengths (or angles).

Mol	Chain	Bond lengths		Bond angles	
		RMSZ	# Z  >5	RMSZ	# Z  >5
1	A	1.33	4/3313 (0.1%)	1.20	9/4463 (0.2%)
1	C	1.36	6/3313 (0.2%)	1.21	7/4463 (0.2%)
All	All	1.34	10/6626 (0.2%)	1.20	16/8926 (0.2%)

Chiral center outliers are detected by calculating the chiral volume of a chiral center and verifying if the center is modelled as a planar moiety or with the opposite hand. A planarity outlier is detected by checking planarity of atoms in a peptide group, atoms in a mainchain group or atoms of a sidechain that are expected to be planar.

Mol	Chain	#Chirality outliers	#Planarity outliers
1	C	0	3

The worst 5 of 10 bond length outliers are listed below:

Mol	Chain	Res	Type	Atoms	Z	Observed(Å)	Ideal(Å)
1	C	46	VAL	CB-CG1	-5.77	1.40	1.52
1	A	312	TYR	CE1-CZ	5.74	1.46	1.38
1	A	212	VAL	CB-CG2	5.62	1.64	1.52
1	C	403	PHE	CE1-CZ	5.28	1.47	1.37
1	C	110	TRP	CB-CG	5.17	1.59	1.50

The worst 5 of 16 bond angle outliers are listed below:

Mol	Chain	Res	Type	Atoms	Z	Observed(°)	Ideal(°)
1	A	312	TYR	CB-CG-CD2	-5.97	117.42	121.00
1	C	100	PHE	CB-CG-CD2	-5.95	116.63	120.80
1	C	407	ASP	CB-CG-OD1	5.94	123.65	118.30
1	A	107	LEU	CB-CG-CD1	-5.90	100.97	111.00
1	A	103	LEU	CB-CG-CD2	-5.88	101.01	111.00

There are no chirality outliers.

All (3) planarity outliers are listed below:

Mol	Chain	Res	Type	Group
1	C	405	TYR	Peptide
1	C	406	VAL	Peptide
1	C	407	ASP	Peptide

## 5.2 Too-close contacts

In the following table, the Non-H and H(model) columns list the number of non-hydrogen atoms and hydrogen atoms in the chain respectively. The H(added) column lists the number of hydrogen atoms added and optimized by MolProbity. The Clashes column lists the number of clashes within the asymmetric unit, whereas Symm-Clashes lists symmetry related clashes.

Mol	Chain	Non-H	H(model)	H(added)	Clashes	Symm-Clashes
1	A	3247	0	3306	111	0
1	C	3247	0	3307	122	0
2	A	16	0	9	0	0
2	C	16	0	9	0	0
3	A	10	0	4	16	0
3	C	10	0	4	13	0
4	A	9	0	4	17	0
4	C	9	0	4	18	0
5	A	15	0	8	13	0
5	C	15	0	8	13	0
6	A	10	0	5	8	0
7	C	14	0	5	16	0
8	A	409	0	0	32	0
8	C	420	0	0	34	0
All	All	7447	0	6673	238	0

The all-atom clashscore is defined as the number of clashes found per 1000 atoms (including hydrogen atoms). The all-atom clashscore for this structure is 18.

The worst 5 of 238 close contacts within the same asymmetric unit are listed below, sorted by their clash magnitude.

Atom-1	Atom-2	Interatomic distance (Å)	Clash overlap (Å)
1:C:208:ASN:ND2	4:C:503:G9A:H5	1.39	1.36
1:A:65:LEU:CD2	5:A:504:3EE:H6	1.64	1.28
1:A:175:ASP:HB3	8:A:903:HOH:O	1.38	1.21
5:C:504:3EE:C9	5:C:504:3EE:H4	1.56	1.19

*Continued on next page...*

*Continued from previous page...*

Atom-1	Atom-2	Interatomic distance (Å)	Clash overlap (Å)
1:C:288:ARG:HD2	8:C:785:HOH:O	1.42	1.18

There are no symmetry-related clashes.

## 5.3 Torsion angles [i](#)

### 5.3.1 Protein backbone [i](#)

In the following table, the Percentiles column shows the percent Ramachandran outliers of the chain as a percentile score with respect to all X-ray entries followed by that with respect to entries of similar resolution.

The Analysed column shows the number of residues for which the backbone conformation was analysed, and the total number of residues.

Mol	Chain	Analysed	Favoured	Allowed	Outliers	Percentiles
1	A	402/448 (90%)	395 (98%)	6 (2%)	1 (0%)	52 27
1	C	402/448 (90%)	388 (96%)	14 (4%)	0	100 100
All	All	804/896 (90%)	783 (97%)	20 (2%)	1 (0%)	56 29

All (1) Ramachandran outliers are listed below:

Mol	Chain	Res	Type
1	A	408	GLU

### 5.3.2 Protein sidechains [i](#)

In the following table, the Percentiles column shows the percent sidechain outliers of the chain as a percentile score with respect to all X-ray entries followed by that with respect to entries of similar resolution.

The Analysed column shows the number of residues for which the sidechain conformation was analysed, and the total number of residues.

Mol	Chain	Analysed	Rotameric	Outliers	Percentiles
1	A	349/388 (90%)	339 (97%)	10 (3%)	50 19
1	C	349/388 (90%)	340 (97%)	9 (3%)	54 23
All	All	698/776 (90%)	679 (97%)	19 (3%)	52 22

5 of 19 residues with a non-rotameric sidechain are listed below:

Mol	Chain	Res	Type
1	A	407	ASP
1	C	27	LEU
1	C	251	LYS
1	A	406	VAL
1	C	257	ASN

Some sidechains can be flipped to improve hydrogen bonding and reduce clashes. 5 of 10 such sidechains are listed below:

Mol	Chain	Res	Type
1	A	306	GLN
1	C	119	GLN
1	C	170	GLN
1	A	170	GLN
1	C	142	ASN

### 5.3.3 RNA ⓘ

There are no RNA molecules in this entry.

## 5.4 Non-standard residues in protein, DNA, RNA chains ⓘ

There are no non-standard protein/DNA/RNA residues in this entry.

## 5.5 Carbohydrates ⓘ

There are no carbohydrates in this entry.

## 5.6 Ligand geometry ⓘ

10 ligands are modelled in this entry.

In the following table, the Counts columns list the number of bonds (or angles) for which Mogul statistics could be retrieved, the number of bonds (or angles) that are observed in the model and the number of bonds (or angles) that are defined in the chemical component dictionary. The Link column lists molecule types, if any, to which the group is linked. The Z score for a bond length (or angle) is the number of standard deviations the observed value is removed from the expected value. A bond length (or angle) with  $|Z| > 2$  is considered an outlier worth inspection. RMSZ is the root-mean-square of all Z scores of the bond lengths (or angles).

Mol	Type	Chain	Res	Link	Bond lengths			Bond angles		
					Counts	RMSZ	# Z  > 2	Counts	RMSZ	# Z  > 2
2	PMP	A	501	1	16,16,16	1.73	3 (18%)	20,23,23	1.50	4 (20%)
3	AKG	A	502	-	3,9,9	1.81	1 (33%)	4,11,11	1.98	2 (50%)
4	G9A	A	503	-	2,8,8	0.46	0	1,9,9	1.91	0
5	3EE	A	504	-	12,15,15	1.46	1 (8%)	13,20,20	1.82	4 (30%)
6	GLU	A	505	-	3,9,9	1.15	0	2,11,11	0.15	0
2	PMP	C	501	1	16,16,16	0.93	1 (6%)	20,23,23	0.98	2 (10%)
3	AKG	C	502	-	3,9,9	2.44	2 (66%)	4,11,11	1.77	2 (50%)
4	G9A	C	503	-	2,8,8	0.44	0	1,9,9	1.88	0
5	3EE	C	504	-	12,15,15	1.38	1 (8%)	13,20,20	0.67	0
7	KYA	C	505	-	12,15,15	1.75	2 (16%)	15,21,21	2.21	5 (33%)

In the following table, the Chirals column lists the number of chiral outliers, the number of chiral centers analysed, the number of these observed in the model and the number defined in the chemical component dictionary. Similar counts are reported in the Torsion and Rings columns. '-' means no outliers of that kind were identified.

Mol	Type	Chain	Res	Link	Chirals	Torsions	Rings
2	PMP	A	501	1	-	0/8/8/8	0/1/1/1
3	AKG	A	502	-	-	0/3/9/9	0/0/0/0
4	G9A	A	503	-	-	0/2/6/6	0/0/0/0
5	3EE	A	504	-	-	1/8/12/12	0/1/1/1
6	GLU	A	505	-	-	0/3/9/9	0/0/0/0
2	PMP	C	501	1	-	0/8/8/8	0/1/1/1
3	AKG	C	502	-	-	0/3/9/9	0/0/0/0
4	G9A	C	503	-	-	0/2/6/6	0/0/0/0
5	3EE	C	504	-	-	0/8/12/12	0/1/1/1
7	KYA	C	505	-	-	0/0/4/4	0/2/2/2

The worst 5 of 11 bond length outliers are listed below:

Mol	Chain	Res	Type	Atoms	Z	Observed(Å)	Ideal(Å)
2	A	501	PMP	C3-C2	-3.63	1.38	1.40
3	C	502	AKG	O5-C2	-3.35	1.16	1.22
2	A	501	PMP	P-O2P	-3.28	1.42	1.54
2	A	501	PMP	O4P-C5A	-3.07	1.31	1.44
3	A	502	AKG	C3-C2	-2.75	1.46	1.51

The worst 5 of 19 bond angle outliers are listed below:

Mol	Chain	Res	Type	Atoms	Z	Observed(°)	Ideal(°)
5	A	504	3EE	C6-C4-C1	-3.94	114.06	118.06

*Continued on next page...*

*Continued from previous page...*

Mol	Chain	Res	Type	Atoms	Z	Observed(°)	Ideal(°)
7	C	505	KYA	C1-C2-N	-3.52	119.47	122.90
3	C	502	AKG	C3-C4-C5	-2.68	107.83	112.75
7	C	505	KYA	C6-C3-C1	-2.48	117.81	120.63
2	A	501	PMP	C5A-C5-C6	-2.38	114.78	119.28

There are no chirality outliers.

All (1) torsion outliers are listed below:

Mol	Chain	Res	Type	Atoms
5	A	504	3EE	C1-C2-C3-C9

There are no ring outliers.

8 monomers are involved in 106 short contacts:

Mol	Chain	Res	Type	Clashes	Symm-Clashes
3	A	502	AKG	16	0
4	A	503	G9A	17	0
5	A	504	3EE	13	0
6	A	505	GLU	8	0
3	C	502	AKG	13	0
4	C	503	G9A	18	0
5	C	504	3EE	13	0
7	C	505	KYA	16	0

## 5.7 Other polymers [i](#)

There are no such residues in this entry.

## 5.8 Polymer linkage issues [i](#)

There are no chain breaks in this entry.



## 6 Fit of model and data [i](#)

### 6.1 Protein, DNA and RNA chains [i](#)

In the following table, the column labelled ‘#RSRZ> 2’ contains the number (and percentage) of RSRZ outliers, followed by percent RSRZ outliers for the chain as percentile scores relative to all X-ray entries and entries of similar resolution. The OWAB column contains the minimum, median, 95<sup>th</sup> percentile and maximum values of the occupancy-weighted average B-factor per residue. The column labelled ‘Q< 0.9’ lists the number of (and percentage) of residues with an average occupancy less than 0.9.

Mol	Chain	Analysed	<RSRZ>	#RSRZ>2	OWAB(Å <sup>2</sup> )	Q<0.9
1	A	404/448 (90%)	-0.40	3 (0%) 89 89	15, 21, 41, 59	0
1	C	404/448 (90%)	-0.38	6 (1%) 76 77	14, 21, 41, 59	0
All	All	808/896 (90%)	-0.39	9 (1%) 82 83	14, 21, 41, 59	0

The worst 5 of 9 RSRZ outliers are listed below:

Mol	Chain	Res	Type	RSRZ
1	A	428	ALA	5.0
1	C	428	ALA	4.9
1	C	43	ALA	3.7
1	C	55	THR	3.2
1	A	43	ALA	2.6

### 6.2 Non-standard residues in protein, DNA, RNA chains [i](#)

There are no non-standard protein/DNA/RNA residues in this entry.

### 6.3 Carbohydrates [i](#)

There are no carbohydrates in this entry.

### 6.4 Ligands [i](#)

In the following table, the Atoms column lists the number of modelled atoms in the group and the number defined in the chemical component dictionary. LLDF column lists the quality of electron density of the group with respect to its neighbouring residues in protein, DNA or RNA chains. The B-factors column lists the minimum, median, 95<sup>th</sup> percentile and maximum values of B factors of atoms in the group. The column labelled ‘Q< 0.9’ lists the number of atoms with occupancy less than 0.9.

Mol	Type	Chain	Res	Atoms	RSCC	RSR	LLDF	B-factors( $\text{\AA}^2$ )	Q<0.9
3	AKG	C	502	10/10	0.95	0.24	22.50	24,37,42,46	0
4	G9A	A	503	9/9	0.68	0.24	8.94	20,34,43,44	0
3	AKG	A	502	10/10	0.94	0.23	8.73	19,35,41,45	0
4	G9A	C	503	9/9	0.64	0.26	8.07	24,37,44,47	0
7	KYA	C	505	14/14	0.74	0.25	6.22	35,40,43,50	0
5	3EE	C	504	15/15	0.67	0.29	5.15	34,41,44,48	0
6	GLU	A	505	10/10	0.83	0.22	4.87	34,38,43,45	0
5	3EE	A	504	15/15	0.70	0.23	4.35	30,38,46,48	0
2	PMP	C	501	16/16	0.97	0.08	0.81	16,18,23,27	0
2	PMP	A	501	16/16	0.96	0.08	0.65	15,19,24,32	0

## 6.5 Other polymers [i](#)

There are no such residues in this entry.