



# wwPDB X-ray Structure Validation Summary Report ⓘ

Feb 1, 2016 – 02:23 PM GMT

PDB ID : 3WXM  
Title : Crystal structure of archaeal Pelota and GTP-bound EF1 alpha complex  
Authors : Kobayashi, K.; Ishitani, R.; Nureki, O.  
Deposited on : 2014-08-04  
Resolution : 2.30 Å(reported)

This is a wwPDB X-ray Structure Validation Summary Report for a publicly released PDB entry.  
We welcome your comments at [validation@mail.wwpdb.org](mailto:validation@mail.wwpdb.org)  
A user guide is available at  
<http://wwpdb.org/validation/2016/XrayValidationReportHelp>  
with specific help available everywhere you see the ⓘ symbol.

---

The following versions of software and data (see [references ⓘ](#)) were used in the production of this report:

MolProbity : 4.02b-467  
Mogul : 1.7 (RC4), CSD as536be (2015)  
Xtriage (Phenix) : 1.9-1692  
EDS : rb-20026688  
Percentile statistics : 20151230.v01 (using entries in the PDB archive December 30th 2015)  
Refmac : 5.8.0135  
CCP4 : 6.5.0  
Ideal geometry (proteins) : Engh & Huber (2001)  
Ideal geometry (DNA, RNA) : Parkinson et al. (1996)  
Validation Pipeline (wwPDB-VP) : trunk26865

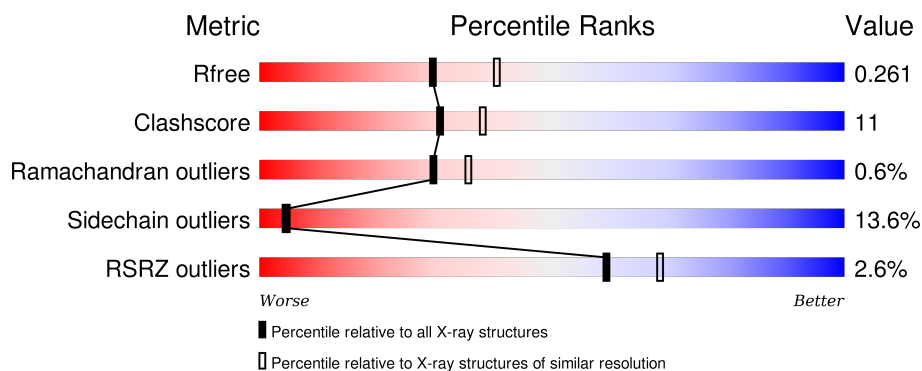
# 1 Overall quality at a glance

The following experimental techniques were used to determine the structure:

## *X-RAY DIFFRACTION*

The reported resolution of this entry is 2.30 Å.

Percentile scores (ranging between 0-100) for global validation metrics of the entry are shown in the following graphic. The table shows the number of entries on which the scores are based.



Metric	Whole archive (#Entries)	Similar resolution (#Entries, resolution range(Å))
$R_{free}$	91344	3852 (2.30-2.30)
Clashscore	102246	4452 (2.30-2.30)
Ramachandran outliers	100387	4410 (2.30-2.30)
Sidechain outliers	100360	4409 (2.30-2.30)
RSRZ outliers	91569	3857 (2.30-2.30)

The table below summarises the geometric issues observed across the polymeric chains and their fit to the electron density. The red, orange, yellow and green segments on the lower bar indicate the fraction of residues that contain outliers for  $\geq 3$ , 2, 1 and 0 types of geometric quality criteria. A grey segment represents the fraction of residues that are not modelled. The numeric value for each fraction is indicated below the corresponding segment, with a dot representing fractions  $\leq 5\%$ . The upper red bar (where present) indicates the fraction of residues that have poor fit to the electron density. The numeric value is given above the bar.

Mol	Chain	Length	Quality of chain
1	A	447	
1	C	447	
1	E	447	
1	G	447	
2	B	376	

*Continued on next page...*

Continued from previous page...

Mol	Chain	Length	Quality of chain
2	D	376	<div><div></div><div>2%</div><div>63%</div><div>25%</div><div>7%</div><div>5%</div></div>
2	F	376	<div><div></div><div>2%</div><div>61%</div><div>27%</div><div>6%</div><div>6%</div></div>
2	H	376	<div><div></div><div>3%</div><div>63%</div><div>25%</div><div>6%</div><div>5%</div></div>

## 2 Entry composition

There are 5 unique types of molecules in this entry. The entry contains 25701 atoms, of which 0 are hydrogens and 0 are deuteriums.

In the tables below, the ZeroOcc column contains the number of atoms modelled with zero occupancy, the AltConf column contains the number of residues with at least one atom in alternate conformation and the Trace column contains the number of residues modelled with at most 2 atoms.

- Molecule 1 is a protein called Elongation factor 1-alpha.

Mol	Chain	Residues	Atoms					ZeroOcc	AltConf	Trace
1	A	432	Total	C	N	O	S	0	0	0
			3340	2143	580	604	13			
1	C	431	Total	C	N	O	S	0	0	0
			3354	2152	582	607	13			
1	E	430	Total	C	N	O	S	0	1	0
			3347	2148	581	605	13			
1	G	432	Total	C	N	O	S	0	0	0
			3338	2142	579	604	13			

There are 40 discrepancies between the modelled and reference sequences:

Chain	Residue	Modelled	Actual	Comment	Reference
A	-2	GLY	-	EXPRESSION TAG	UNP Q9YAV0
A	-1	SER	-	EXPRESSION TAG	UNP Q9YAV0
A	0	HIS	-	EXPRESSION TAG	UNP Q9YAV0
A	438	LEU	-	EXPRESSION TAG	UNP Q9YAV0
A	439	ALA	-	EXPRESSION TAG	UNP Q9YAV0
A	440	ARG	-	EXPRESSION TAG	UNP Q9YAV0
A	441	GLY	-	EXPRESSION TAG	UNP Q9YAV0
A	442	SER	-	EXPRESSION TAG	UNP Q9YAV0
A	443	GLY	-	EXPRESSION TAG	UNP Q9YAV0
A	444	CYS	-	EXPRESSION TAG	UNP Q9YAV0
C	-2	GLY	-	EXPRESSION TAG	UNP Q9YAV0
C	-1	SER	-	EXPRESSION TAG	UNP Q9YAV0
C	0	HIS	-	EXPRESSION TAG	UNP Q9YAV0
C	438	LEU	-	EXPRESSION TAG	UNP Q9YAV0
C	439	ALA	-	EXPRESSION TAG	UNP Q9YAV0
C	440	ARG	-	EXPRESSION TAG	UNP Q9YAV0
C	441	GLY	-	EXPRESSION TAG	UNP Q9YAV0
C	442	SER	-	EXPRESSION TAG	UNP Q9YAV0
C	443	GLY	-	EXPRESSION TAG	UNP Q9YAV0
C	444	CYS	-	EXPRESSION TAG	UNP Q9YAV0
E	-2	GLY	-	EXPRESSION TAG	UNP Q9YAV0

*Continued on next page...*

*Continued from previous page...*

Chain	Residue	Modelled	Actual	Comment	Reference
E	-1	SER	-	EXPRESSION TAG	UNP Q9YAV0
E	0	HIS	-	EXPRESSION TAG	UNP Q9YAV0
E	438	LEU	-	EXPRESSION TAG	UNP Q9YAV0
E	439	ALA	-	EXPRESSION TAG	UNP Q9YAV0
E	440	ARG	-	EXPRESSION TAG	UNP Q9YAV0
E	441	GLY	-	EXPRESSION TAG	UNP Q9YAV0
E	442	SER	-	EXPRESSION TAG	UNP Q9YAV0
E	443	GLY	-	EXPRESSION TAG	UNP Q9YAV0
E	444	CYS	-	EXPRESSION TAG	UNP Q9YAV0
G	-2	GLY	-	EXPRESSION TAG	UNP Q9YAV0
G	-1	SER	-	EXPRESSION TAG	UNP Q9YAV0
G	0	HIS	-	EXPRESSION TAG	UNP Q9YAV0
G	438	LEU	-	EXPRESSION TAG	UNP Q9YAV0
G	439	ALA	-	EXPRESSION TAG	UNP Q9YAV0
G	440	ARG	-	EXPRESSION TAG	UNP Q9YAV0
G	441	GLY	-	EXPRESSION TAG	UNP Q9YAV0
G	442	SER	-	EXPRESSION TAG	UNP Q9YAV0
G	443	GLY	-	EXPRESSION TAG	UNP Q9YAV0
G	444	CYS	-	EXPRESSION TAG	UNP Q9YAV0

- Molecule 2 is a protein called Protein pelota homolog.

Mol	Chain	Residues	Atoms					ZeroOcc	AltConf	Trace
2	B	357	Total	C	N	O	S	0	0	0
			2722	1699	508	508	7			
2	D	357	Total	C	N	O	S	0	0	0
			2727	1701	509	510	7			
2	F	355	Total	C	N	O	S	0	0	0
			2692	1685	502	498	7			
2	H	356	Total	C	N	O	S	0	0	0
			2700	1685	506	502	7			

There are 80 discrepancies between the modelled and reference sequences:

Chain	Residue	Modelled	Actual	Comment	Reference
B	-19	MET	-	EXPRESSION TAG	UNP Q9YAZ5
B	-18	GLY	-	EXPRESSION TAG	UNP Q9YAZ5
B	-17	SER	-	EXPRESSION TAG	UNP Q9YAZ5
B	-16	SER	-	EXPRESSION TAG	UNP Q9YAZ5
B	-15	HIS	-	EXPRESSION TAG	UNP Q9YAZ5
B	-14	HIS	-	EXPRESSION TAG	UNP Q9YAZ5
B	-13	HIS	-	EXPRESSION TAG	UNP Q9YAZ5

*Continued on next page...*

*Continued from previous page...*

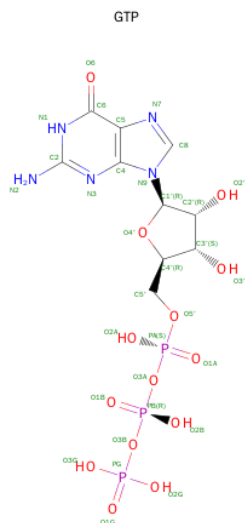
Chain	Residue	Modelled	Actual	Comment	Reference
B	-12	HIS	-	EXPRESSION TAG	UNP Q9YAZ5
B	-11	HIS	-	EXPRESSION TAG	UNP Q9YAZ5
B	-10	HIS	-	EXPRESSION TAG	UNP Q9YAZ5
B	-9	SER	-	EXPRESSION TAG	UNP Q9YAZ5
B	-8	SER	-	EXPRESSION TAG	UNP Q9YAZ5
B	-7	GLY	-	EXPRESSION TAG	UNP Q9YAZ5
B	-6	LEU	-	EXPRESSION TAG	UNP Q9YAZ5
B	-5	VAL	-	EXPRESSION TAG	UNP Q9YAZ5
B	-4	PRO	-	EXPRESSION TAG	UNP Q9YAZ5
B	-3	ARG	-	EXPRESSION TAG	UNP Q9YAZ5
B	-2	GLY	-	EXPRESSION TAG	UNP Q9YAZ5
B	-1	SER	-	EXPRESSION TAG	UNP Q9YAZ5
B	0	HIS	-	EXPRESSION TAG	UNP Q9YAZ5
D	-19	MET	-	EXPRESSION TAG	UNP Q9YAZ5
D	-18	GLY	-	EXPRESSION TAG	UNP Q9YAZ5
D	-17	SER	-	EXPRESSION TAG	UNP Q9YAZ5
D	-16	SER	-	EXPRESSION TAG	UNP Q9YAZ5
D	-15	HIS	-	EXPRESSION TAG	UNP Q9YAZ5
D	-14	HIS	-	EXPRESSION TAG	UNP Q9YAZ5
D	-13	HIS	-	EXPRESSION TAG	UNP Q9YAZ5
D	-12	HIS	-	EXPRESSION TAG	UNP Q9YAZ5
D	-11	HIS	-	EXPRESSION TAG	UNP Q9YAZ5
D	-10	HIS	-	EXPRESSION TAG	UNP Q9YAZ5
D	-9	SER	-	EXPRESSION TAG	UNP Q9YAZ5
D	-8	SER	-	EXPRESSION TAG	UNP Q9YAZ5
D	-7	GLY	-	EXPRESSION TAG	UNP Q9YAZ5
D	-6	LEU	-	EXPRESSION TAG	UNP Q9YAZ5
D	-5	VAL	-	EXPRESSION TAG	UNP Q9YAZ5
D	-4	PRO	-	EXPRESSION TAG	UNP Q9YAZ5
D	-3	ARG	-	EXPRESSION TAG	UNP Q9YAZ5
D	-2	GLY	-	EXPRESSION TAG	UNP Q9YAZ5
D	-1	SER	-	EXPRESSION TAG	UNP Q9YAZ5
D	0	HIS	-	EXPRESSION TAG	UNP Q9YAZ5
F	-19	MET	-	EXPRESSION TAG	UNP Q9YAZ5
F	-18	GLY	-	EXPRESSION TAG	UNP Q9YAZ5
F	-17	SER	-	EXPRESSION TAG	UNP Q9YAZ5
F	-16	SER	-	EXPRESSION TAG	UNP Q9YAZ5
F	-15	HIS	-	EXPRESSION TAG	UNP Q9YAZ5
F	-14	HIS	-	EXPRESSION TAG	UNP Q9YAZ5
F	-13	HIS	-	EXPRESSION TAG	UNP Q9YAZ5
F	-12	HIS	-	EXPRESSION TAG	UNP Q9YAZ5
F	-11	HIS	-	EXPRESSION TAG	UNP Q9YAZ5

*Continued on next page...*

*Continued from previous page...*

Chain	Residue	Modelled	Actual	Comment	Reference
F	-10	HIS	-	EXPRESSION TAG	UNP Q9YAZ5
F	-9	SER	-	EXPRESSION TAG	UNP Q9YAZ5
F	-8	SER	-	EXPRESSION TAG	UNP Q9YAZ5
F	-7	GLY	-	EXPRESSION TAG	UNP Q9YAZ5
F	-6	LEU	-	EXPRESSION TAG	UNP Q9YAZ5
F	-5	VAL	-	EXPRESSION TAG	UNP Q9YAZ5
F	-4	PRO	-	EXPRESSION TAG	UNP Q9YAZ5
F	-3	ARG	-	EXPRESSION TAG	UNP Q9YAZ5
F	-2	GLY	-	EXPRESSION TAG	UNP Q9YAZ5
F	-1	SER	-	EXPRESSION TAG	UNP Q9YAZ5
F	0	HIS	-	EXPRESSION TAG	UNP Q9YAZ5
H	-19	MET	-	EXPRESSION TAG	UNP Q9YAZ5
H	-18	GLY	-	EXPRESSION TAG	UNP Q9YAZ5
H	-17	SER	-	EXPRESSION TAG	UNP Q9YAZ5
H	-16	SER	-	EXPRESSION TAG	UNP Q9YAZ5
H	-15	HIS	-	EXPRESSION TAG	UNP Q9YAZ5
H	-14	HIS	-	EXPRESSION TAG	UNP Q9YAZ5
H	-13	HIS	-	EXPRESSION TAG	UNP Q9YAZ5
H	-12	HIS	-	EXPRESSION TAG	UNP Q9YAZ5
H	-11	HIS	-	EXPRESSION TAG	UNP Q9YAZ5
H	-10	HIS	-	EXPRESSION TAG	UNP Q9YAZ5
H	-9	SER	-	EXPRESSION TAG	UNP Q9YAZ5
H	-8	SER	-	EXPRESSION TAG	UNP Q9YAZ5
H	-7	GLY	-	EXPRESSION TAG	UNP Q9YAZ5
H	-6	LEU	-	EXPRESSION TAG	UNP Q9YAZ5
H	-5	VAL	-	EXPRESSION TAG	UNP Q9YAZ5
H	-4	PRO	-	EXPRESSION TAG	UNP Q9YAZ5
H	-3	ARG	-	EXPRESSION TAG	UNP Q9YAZ5
H	-2	GLY	-	EXPRESSION TAG	UNP Q9YAZ5
H	-1	SER	-	EXPRESSION TAG	UNP Q9YAZ5
H	0	HIS	-	EXPRESSION TAG	UNP Q9YAZ5

- Molecule 3 is GUANOSINE-5'-TRIPHOSPHATE (three-letter code: GTP) (formula:  $C_{10}H_{16}N_5O_{14}P_3$ ).



Mol	Chain	Residues	Atoms					ZeroOcc	AltConf
3	A	1	Total 32	C 10	N 5	O 14	P 3	0	0
3	C	1	Total 32	C 10	N 5	O 14	P 3	0	0
3	E	1	Total 32	C 10	N 5	O 14	P 3	0	0
3	G	1	Total 32	C 10	N 5	O 14	P 3	0	0

- Molecule 4 is MAGNESIUM ION (three-letter code: MG) (formula: Mg).

Mol	Chain	Residues	Atoms	ZeroOcc	AltConf
4	G	1	Total Mg 1 1	0	0
4	A	1	Total Mg 1 1	0	0
4	C	1	Total Mg 1 1	0	0
4	E	1	Total Mg 1 1	0	0

- Molecule 5 is water.

Mol	Chain	Residues	Atoms	ZeroOcc	AltConf
5	A	222	Total O 222 222	0	0

*Continued on next page...*



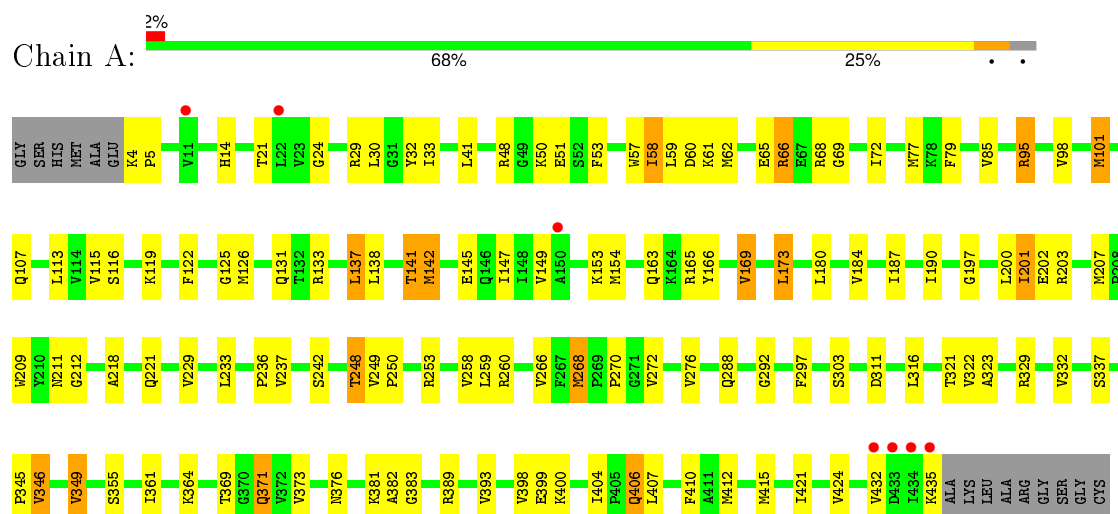
*Continued from previous page...*

Mol	Chain	Residues	Atoms		ZeroOcc	AltConf
5	B	160	Total 160	O 160	0	0
5	C	192	Total 192	O 192	0	0
5	D	177	Total 177	O 177	0	0
5	E	178	Total 178	O 178	0	0
5	F	145	Total 145	O 145	0	0
5	G	124	Total 124	O 124	0	0
5	H	151	Total 151	O 151	0	0

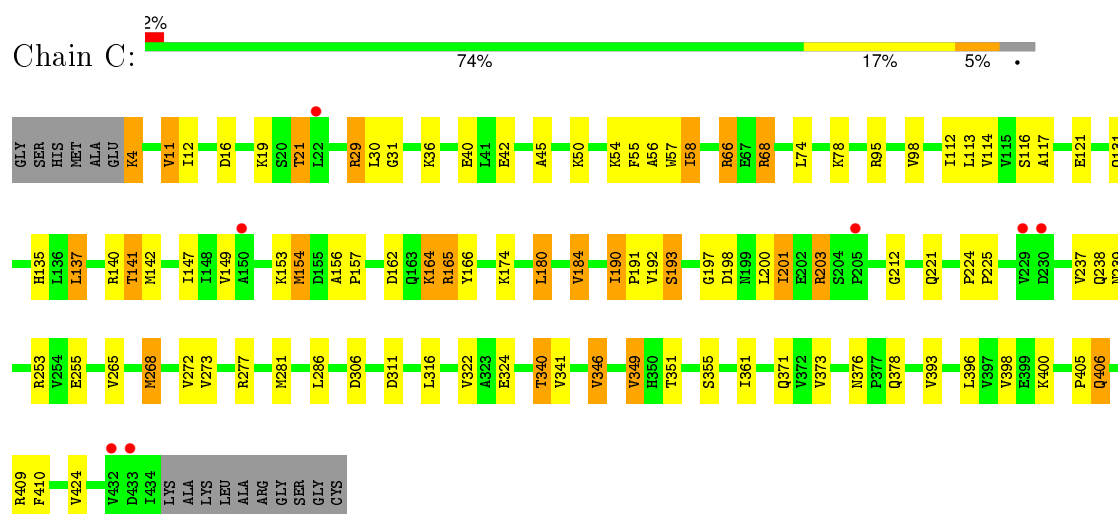
### 3 Residue-property plots [i](#)

These plots are drawn for all protein, RNA and DNA chains in the entry. The first graphic for a chain summarises the proportions of errors displayed in the second graphic. The second graphic shows the sequence view annotated by issues in geometry and electron density. Residues are color-coded according to the number of geometric quality criteria for which they contain at least one outlier: green = 0, yellow = 1, orange = 2 and red = 3 or more. A red dot above a residue indicates a poor fit to the electron density ( $RSRZ > 2$ ). Stretches of 2 or more consecutive residues without any outlier are shown as a green connector. Residues present in the sample, but not in the model, are shown in grey.

#### • Molecule 1: Elongation factor 1-alpha



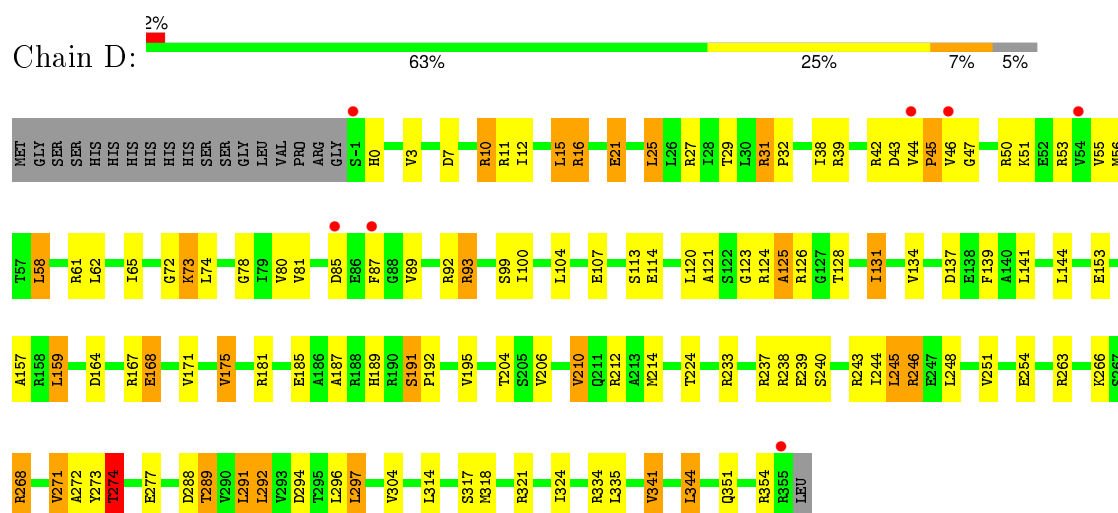
#### • Molecule 1: Elongation factor 1-alpha



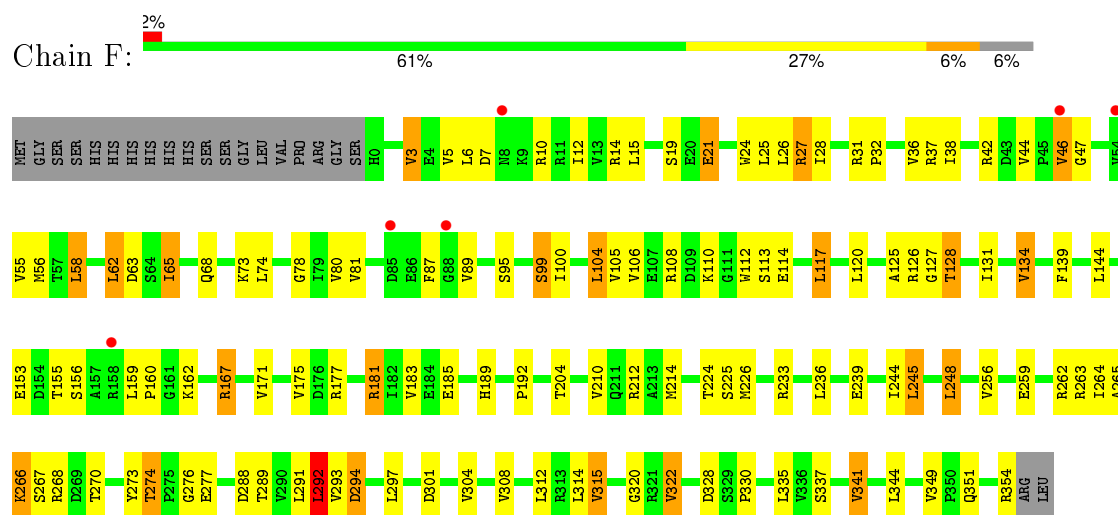
#### • Molecule 1: Elongation factor 1-alpha



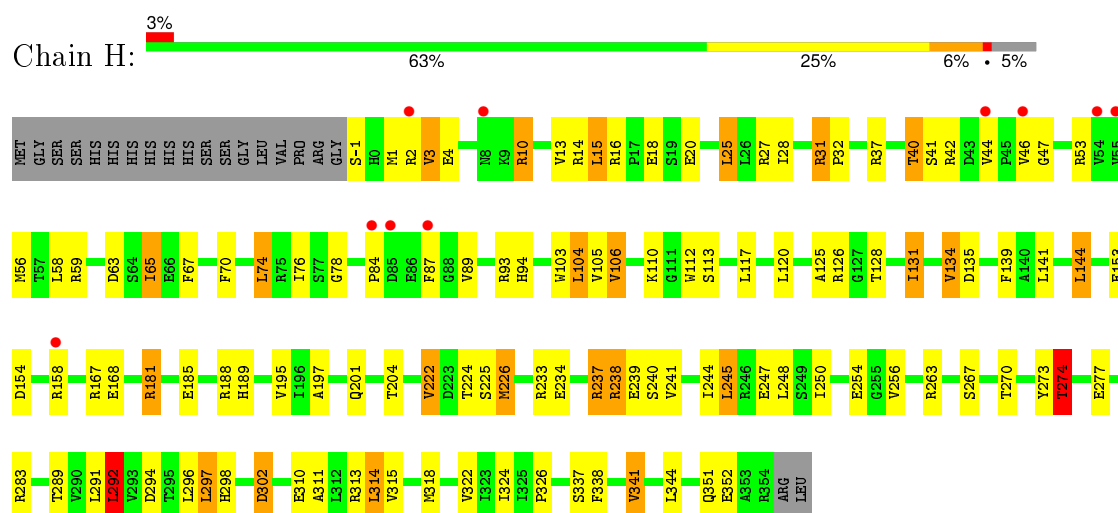




• Molecule 2: Protein pelota homolog



• Molecule 2: Protein pelota homolog



## 4 Data and refinement statistics

Property	Value	Source
Space group	C 2 2 21	Depositor
Cell constants a, b, c, $\alpha$ , $\beta$ , $\gamma$	148.93Å 158.94Å 427.24Å 90.00° 90.00° 90.00°	Depositor
Resolution (Å)	32.43 – 2.30 32.43 – 2.19	Depositor EDS
% Data completeness (in resolution range)	96.8 (32.43-2.30) 95.0 (32.43-2.19)	Depositor EDS
$R_{merge}$	(Not available)	Depositor
$R_{sym}$	(Not available)	Depositor
$\langle I/\sigma(I) \rangle$ <sup>1</sup>	1.63 (at 2.20Å)	Xtriage
Refinement program	PHENIX (phenix.refine: 1.8.3_1479)	Depositor
R, $R_{free}$	0.198 , 0.261 0.198 , 0.261	Depositor DCC
$R_{free}$ test set	10892 reflections (5.04%)	DCC
Wilson B-factor (Å <sup>2</sup> )	35.1	Xtriage
Anisotropy	0.227	Xtriage
Bulk solvent $k_{sol}$ (e/Å <sup>3</sup> ), $B_{sol}$ (Å <sup>2</sup> )	0.34 , 50.4	EDS
Estimated twinning fraction	No twinning to report.	Xtriage
L-test for twinning <sup>2</sup>	$\langle  L  \rangle = 0.45$ , $\langle L^2 \rangle = 0.28$	Xtriage
Outliers	0 of 244864 reflections	Xtriage
$F_o, F_c$ correlation	0.95	EDS
Total number of atoms	25701	wwPDB-VP
Average B, all atoms (Å <sup>2</sup> )	45.0	wwPDB-VP

Xtriage's analysis on translational NCS is as follows: *The largest off-origin peak in the Patterson function is 2.25% of the height of the origin peak. No significant pseudotranslation is detected.*

<sup>1</sup>Intensities estimated from amplitudes.

<sup>2</sup>Theoretical values of  $\langle |L| \rangle$ ,  $\langle L^2 \rangle$  for acentric reflections are 0.5, 0.375 respectively for untwinned datasets, and 0.333, 0.2 for perfectly twinned datasets.

## 5 Model quality

### 5.1 Standard geometry

Bond lengths and bond angles in the following residue types are not validated in this section: GTP, MG

The Z score for a bond length (or angle) is the number of standard deviations the observed value is removed from the expected value. A bond length (or angle) with  $|Z| > 5$  is considered an outlier worth inspection. RMSZ is the root-mean-square of all Z scores of the bond lengths (or angles).

Mol	Chain	Bond lengths		Bond angles	
		RMSZ	# $ Z  > 5$	RMSZ	# $ Z  > 5$
1	A	0.46	0/3414	0.62	0/4631
1	C	0.44	0/3428	0.62	0/4645
1	E	0.43	0/3424	0.61	0/4640
1	G	0.40	0/3412	0.57	0/4629
2	B	0.47	0/2758	0.67	3/3732 (0.1%)
2	D	0.46	0/2763	0.68	2/3738 (0.1%)
2	F	0.43	0/2728	0.63	2/3692 (0.1%)
2	H	0.42	0/2735	0.63	3/3702 (0.1%)
All	All	0.44	0/24662	0.63	10/33409 (0.0%)

There are no bond length outliers.

The worst 5 of 10 bond angle outliers are listed below:

Mol	Chain	Res	Type	Atoms	Z	Observed(°)	Ideal(°)
2	H	292	LEU	CA-CB-CG	7.05	131.52	115.30
2	B	292	LEU	CA-CB-CG	6.63	130.55	115.30
2	D	15	LEU	CA-CB-CG	6.36	129.92	115.30
2	F	104	LEU	CA-CB-CG	5.88	128.83	115.30
2	B	104	LEU	CA-CB-CG	5.84	128.74	115.30

There are no chirality outliers.

There are no planarity outliers.

### 5.2 Too-close contacts

In the following table, the Non-H and H(model) columns list the number of non-hydrogen atoms and hydrogen atoms in the chain respectively. The H(added) column lists the number of hydrogen atoms added and optimized by MolProbity. The Clashes column lists the number of clashes within the asymmetric unit, whereas Symm-Clashes lists symmetry related clashes.

Mol	Chain	Non-H	H(model)	H(added)	Clashes	Symm-Clashes
1	A	3340	0	3372	77	0
1	C	3354	0	3409	53	0
1	E	3347	0	3397	68	0
1	G	3338	0	3366	75	0
2	B	2722	0	2790	66	0
2	D	2727	0	2799	68	0
2	F	2692	0	2769	68	0
2	H	2700	0	2766	66	0
3	A	32	0	12	3	0
3	C	32	0	12	0	0
3	E	32	0	12	1	0
3	G	32	0	12	6	0
4	A	1	0	0	0	0
4	C	1	0	0	0	0
4	E	1	0	0	0	0
4	G	1	0	0	0	0
5	A	222	0	0	8	0
5	B	160	0	0	5	0
5	C	192	0	0	6	0
5	D	177	0	0	9	0
5	E	178	0	0	6	0
5	F	145	0	0	9	0
5	G	124	0	0	6	0
5	H	151	0	0	4	0
All	All	25701	0	24716	533	0

The all-atom clashscore is defined as the number of clashes found per 1000 atoms (including hydrogen atoms). The all-atom clashscore for this structure is 11.

The worst 5 of 533 close contacts within the same asymmetric unit are listed below, sorted by their clash magnitude.

Atom-1	Atom-2	Interatomic distance (Å)	Clash overlap (Å)
2:H:65:ILE:HG22	2:H:76:ILE:HG22	1.54	0.90
1:E:13:GLY:H	1:E:135:HIS:HD2	1.19	0.90
2:F:63:ASP:HB2	2:F:78:GLY:HA2	1.55	0.88
1:G:149:VAL:HG12	1:G:187:ILE:HD11	1.54	0.88
1:A:62:MET:HE3	1:A:72:ILE:HB	1.56	0.85

There are no symmetry-related clashes.

## 5.3 Torsion angles

### 5.3.1 Protein backbone

In the following table, the Percentiles column shows the percent Ramachandran outliers of the chain as a percentile score with respect to all X-ray entries followed by that with respect to entries of similar resolution.

The Analysed column shows the number of residues for which the backbone conformation was analysed, and the total number of residues.

Mol	Chain	Analysed	Favoured	Allowed	Outliers	Percentiles	
1	A	430/447 (96%)	412 (96%)	17 (4%)	1 (0%)	52	64
1	C	429/447 (96%)	407 (95%)	22 (5%)	0	100	100
1	E	429/447 (96%)	410 (96%)	19 (4%)	0	100	100
1	G	430/447 (96%)	406 (94%)	20 (5%)	4 (1%)	21	24
2	B	355/376 (94%)	344 (97%)	8 (2%)	3 (1%)	24	27
2	D	355/376 (94%)	340 (96%)	12 (3%)	3 (1%)	24	27
2	F	353/376 (94%)	331 (94%)	17 (5%)	5 (1%)	14	13
2	H	354/376 (94%)	337 (95%)	14 (4%)	3 (1%)	24	27
All	All	3135/3292 (95%)	2987 (95%)	129 (4%)	19 (1%)	30	36

5 of 19 Ramachandran outliers are listed below:

Mol	Chain	Res	Type
2	B	123	GLY
2	F	127	GLY
2	F	266	LYS
1	G	127	SER
2	H	110	LYS

### 5.3.2 Protein sidechains

In the following table, the Percentiles column shows the percent sidechain outliers of the chain as a percentile score with respect to all X-ray entries followed by that with respect to entries of similar resolution.

The Analysed column shows the number of residues for which the sidechain conformation was analysed, and the total number of residues.

Mol	Chain	Analysed	Rotameric	Outliers	Percentiles	
1	A	356/378 (94%)	315 (88%)	41 (12%)	7	7

*Continued on next page...*



*Continued from previous page...*

Mol	Chain	Analysed	Rotameric	Outliers	Percentiles	
1	C	361/378 (96%)	319 (88%)	42 (12%)	7	7
1	E	359/378 (95%)	328 (91%)	31 (9%)	13	15
1	G	355/378 (94%)	314 (88%)	41 (12%)	7	7
2	B	284/311 (91%)	238 (84%)	46 (16%)	3	3
2	D	286/311 (92%)	236 (82%)	50 (18%)	2	2
2	F	279/311 (90%)	230 (82%)	49 (18%)	2	2
2	H	280/311 (90%)	231 (82%)	49 (18%)	2	2
All	All	2560/2756 (93%)	2211 (86%)	349 (14%)	5	4

5 of 349 residues with a non-rotameric sidechain are listed below:

Mol	Chain	Res	Type
2	D	204	THR
1	E	201	ILE
2	H	201	GLN
2	D	240	SER
2	D	341	VAL

Some sidechains can be flipped to improve hydrogen bonding and reduce clashes. All (2) such sidechains are listed below:

Mol	Chain	Res	Type
1	E	135	HIS
1	G	107	GLN

### 5.3.3 RNA ⓘ

There are no RNA molecules in this entry.

## 5.4 Non-standard residues in protein, DNA, RNA chains ⓘ

There are no non-standard protein/DNA/RNA residues in this entry.

## 5.5 Carbohydrates ⓘ

There are no carbohydrates in this entry.

## 5.6 Ligand geometry

Of 8 ligands modelled in this entry, 4 are monoatomic - leaving 4 for Mogul analysis.

In the following table, the Counts columns list the number of bonds (or angles) for which Mogul statistics could be retrieved, the number of bonds (or angles) that are observed in the model and the number of bonds (or angles) that are defined in the chemical component dictionary. The Link column lists molecule types, if any, to which the group is linked. The Z score for a bond length (or angle) is the number of standard deviations the observed value is removed from the expected value. A bond length (or angle) with  $|Z| > 2$  is considered an outlier worth inspection. RMSZ is the root-mean-square of all Z scores of the bond lengths (or angles).

Mol	Type	Chain	Res	Link	Bond lengths			Bond angles		
					Counts	RMSZ	# $ Z  > 2$	Counts	RMSZ	# $ Z  > 2$
3	GTP	A	501	4	25,34,34	0.84	1 (4%)	34,54,54	1.78	7 (20%)
3	GTP	C	501	4	25,34,34	0.94	1 (4%)	34,54,54	1.73	6 (17%)
3	GTP	E	501	4	25,34,34	0.88	1 (4%)	34,54,54	1.87	6 (17%)
3	GTP	G	501	4	25,34,34	0.94	1 (4%)	34,54,54	1.75	7 (20%)

In the following table, the Chirals column lists the number of chiral outliers, the number of chiral centers analysed, the number of these observed in the model and the number defined in the chemical component dictionary. Similar counts are reported in the Torsion and Rings columns. '-' means no outliers of that kind were identified.

Mol	Type	Chain	Res	Link	Chirals	Torsions	Rings
3	GTP	A	501	4	-	0/18/38/38	0/3/3/3
3	GTP	C	501	4	-	0/18/38/38	0/3/3/3
3	GTP	E	501	4	-	0/18/38/38	0/3/3/3
3	GTP	G	501	4	-	0/18/38/38	0/3/3/3

All (4) bond length outliers are listed below:

Mol	Chain	Res	Type	Atoms	Z	Observed(Å)	Ideal(Å)
3	E	501	GTP	C6-N1	2.47	1.37	1.33
3	A	501	GTP	C6-N1	2.50	1.37	1.33
3	C	501	GTP	C6-N1	2.71	1.38	1.33
3	G	501	GTP	C6-N1	2.79	1.38	1.33

The worst 5 of 26 bond angle outliers are listed below:

Mol	Chain	Res	Type	Atoms	Z	Observed(°)	Ideal(°)
3	G	501	GTP	N3-C2-N1	-4.68	120.32	127.44
3	C	501	GTP	N3-C2-N1	-4.66	120.35	127.44
3	E	501	GTP	N3-C2-N1	-4.50	120.59	127.44

*Continued on next page...*

*Continued from previous page...*

Mol	Chain	Res	Type	Atoms	Z	Observed(°)	Ideal(°)
3	E	501	GTP	PB-O3B-PG	-4.31	118.20	132.67
3	G	501	GTP	C2'-C1'-N9	-4.25	107.80	114.29

There are no chirality outliers.

There are no torsion outliers.

There are no ring outliers.

3 monomers are involved in 10 short contacts:

Mol	Chain	Res	Type	Clashes	Symm-Clashes
3	A	501	GTP	3	0
3	E	501	GTP	1	0
3	G	501	GTP	6	0

## 5.7 Other polymers [i](#)

There are no such residues in this entry.

## 5.8 Polymer linkage issues [i](#)

There are no chain breaks in this entry.

## 6 Fit of model and data ⓘ

### 6.1 Protein, DNA and RNA chains ⓘ

In the following table, the column labelled ‘#RSRZ> 2’ contains the number (and percentage) of RSRZ outliers, followed by percent RSRZ outliers for the chain as percentile scores relative to all X-ray entries and entries of similar resolution. The OWAB column contains the minimum, median, 95<sup>th</sup> percentile and maximum values of the occupancy-weighted average B-factor per residue. The column labelled ‘Q< 0.9’ lists the number of (and percentage) of residues with an average occupancy less than 0.9.

Mol	Chain	Analysed	<RSRZ>	#RSRZ>2	OWAB(Å <sup>2</sup> )	Q<0.9
1	A	432/447 (96%)	-0.14	7 (1%) 74 80	20, 38, 62, 83	0
1	C	431/447 (96%)	-0.11	7 (1%) 74 80	24, 43, 69, 83	0
1	E	430/447 (96%)	-0.15	11 (2%) 59 68	27, 43, 63, 78	0
1	G	432/447 (96%)	0.17	25 (5%) 26 35	29, 50, 81, 91	0
2	B	357/376 (94%)	-0.31	10 (2%) 56 66	25, 39, 69, 82	0
2	D	357/376 (94%)	-0.33	7 (1%) 68 75	24, 40, 69, 84	0
2	F	355/376 (94%)	-0.34	6 (1%) 73 79	24, 41, 70, 88	0
2	H	356/376 (94%)	-0.23	10 (2%) 56 66	27, 45, 72, 88	0
All	All	3150/3292 (95%)	-0.17	83 (2%) 59 68	20, 43, 71, 91	0

The worst 5 of 83 RSRZ outliers are listed below:

Mol	Chain	Res	Type	RSRZ
1	G	432	VAL	7.5
1	A	432	VAL	4.8
1	A	433	ASP	4.4
2	B	44	VAL	4.3
2	F	46	VAL	4.2

### 6.2 Non-standard residues in protein, DNA, RNA chains ⓘ

There are no non-standard protein/DNA/RNA residues in this entry.

### 6.3 Carbohydrates ⓘ

There are no carbohydrates in this entry.

## 6.4 Ligands [i](#)

In the following table, the Atoms column lists the number of modelled atoms in the group and the number defined in the chemical component dictionary. LLDF column lists the quality of electron density of the group with respect to its neighbouring residues in protein, DNA or RNA chains. The B-factors column lists the minimum, median, 95<sup>th</sup> percentile and maximum values of B factors of atoms in the group. The column labelled 'Q< 0.9' lists the number of atoms with occupancy less than 0.9.

Mol	Type	Chain	Res	Atoms	RSCC	RSR	LLDF	B-factors(Å <sup>2</sup> )	Q<0.9
4	MG	C	502	1/1	0.99	0.19	0.23	37,37,37,37	0
3	GTP	A	501	32/32	0.97	0.15	-0.14	26,43,51,61	0
3	GTP	G	501	32/32	0.97	0.15	-0.17	41,58,66,70	0
3	GTP	C	501	32/32	0.98	0.14	-0.30	32,46,57,57	0
4	MG	G	502	1/1	0.96	0.17	-0.44	50,50,50,50	0
3	GTP	E	501	32/32	0.98	0.11	-0.46	31,42,50,51	0
4	MG	A	502	1/1	0.98	0.17	-0.48	33,33,33,33	0
4	MG	E	502	1/1	0.99	0.15	-0.65	38,38,38,38	0

## 6.5 Other polymers [i](#)

There are no such residues in this entry.