



# Full wwPDB X-ray Structure Validation Report ⓘ

Feb 1, 2016 – 06:33 AM GMT

PDB ID : 2XIM  
Title : ARGININE RESIDUES AS STABILIZING ELEMENTS IN PROTEINS  
Authors : Mrabet, N.T.; Van Denbroek, A.; Van Den Brande, I.; Stanssens, P.; Laroche, Y.; Lambeir, A.-M.; Matthyssens, G.; Jenkins, J.; Chiadmi, M.; Vantilbeurgh, H.; Rey, F.; Janin, J.; Quax, W.J.; Lasters, I.; Demaeyer, M.; Wodak, S.J.  
Deposited on : 1991-05-29  
Resolution : 2.30 Å(reported)

This is a Full wwPDB X-ray Structure Validation Report for a publicly released PDB entry.  
We welcome your comments at [validation@mail.wwpdb.org](mailto:validation@mail.wwpdb.org)  
A user guide is available at  
<http://wwpdb.org/validation/2016/XrayValidationReportHelp>  
with specific help available everywhere you see the ⓘ symbol.

---

The following versions of software and data (see [references ⓘ](#)) were used in the production of this report:

MolProbity : 4.02b-467  
Mogul : 1.7 (RC4), CSD as536be (2015)  
Xtriage (Phenix) : **NOT EXECUTED**  
EDS : **NOT EXECUTED**  
Percentile statistics : 20151230.v01 (using entries in the PDB archive December 30th 2015)  
Ideal geometry (proteins) : Engh & Huber (2001)  
Ideal geometry (DNA, RNA) : Parkinson et al. (1996)  
Validation Pipeline (wwPDB-VP) : trunk26865

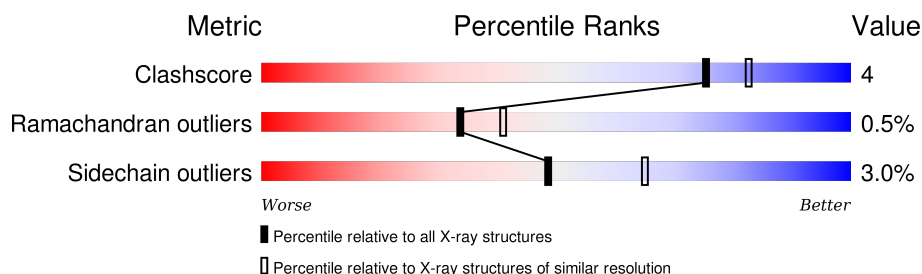
# 1 Overall quality at a glance

The following experimental techniques were used to determine the structure:

*X-RAY DIFFRACTION*

The reported resolution of this entry is 2.30 Å.

Percentile scores (ranging between 0-100) for global validation metrics of the entry are shown in the following graphic. The table shows the number of entries on which the scores are based.



Metric	Whole archive (#Entries)	Similar resolution (#Entries, resolution range(Å))
Clashscore	102246	4452 (2.30-2.30)
Ramachandran outliers	100387	4410 (2.30-2.30)
Sidechain outliers	100360	4409 (2.30-2.30)

The table below summarises the geometric issues observed across the polymeric chains and their fit to the electron density. The red, orange, yellow and green segments on the lower bar indicate the fraction of residues that contain outliers for  $\geq 3$ , 2, 1 and 0 types of geometric quality criteria. A grey segment represents the fraction of residues that are not modelled. The numeric value for each fraction is indicated below the corresponding segment, with a dot representing fractions  $\leq 5\%$ . The upper red bar (where present) indicates the fraction of residues that have poor fit to the electron density. The numeric value is given above the bar.

Note EDS was not executed.

Mol	Chain	Length	Quality of chain
1	A	393	 80% 16% . .
1	B	393	 82% 16% .
1	C	393	 81% 15% . .
1	D	393	 82% 15% .

## 2 Entry composition

There are 4 unique types of molecules in this entry. The entry contains 13187 atoms, of which 0 are hydrogens and 0 are deuteriums.

In the tables below, the ZeroOcc column contains the number of atoms modelled with zero occupancy, the AltConf column contains the number of residues with at least one atom in alternate conformation and the Trace column contains the number of residues modelled with at most 2 atoms.

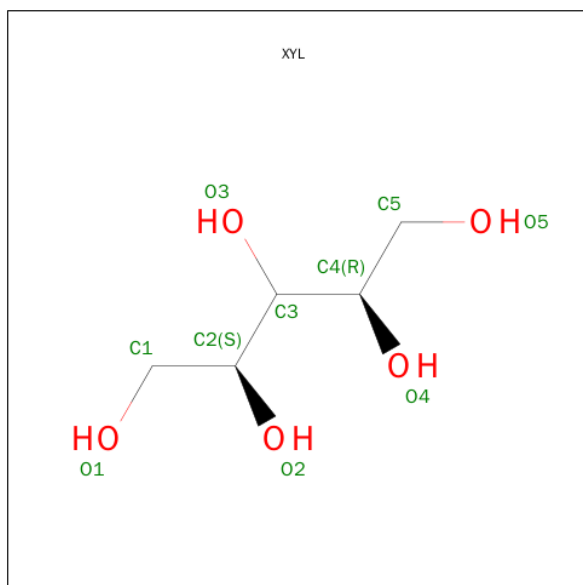
- Molecule 1 is a protein called D-XYLOSE ISOMERASE.

Mol	Chain	Residues	Atoms					ZeroOcc	AltConf	Trace
1	A	392	Total	C	N	O	S	0	0	0
			3055	1939	534	578	4			
1	B	392	Total	C	N	O	S	0	0	0
			3055	1939	534	578	4			
1	C	392	Total	C	N	O	S	0	0	0
			3055	1939	534	578	4			
1	D	392	Total	C	N	O	S	0	0	0
			3055	1939	534	578	4			

There are 4 discrepancies between the modelled and reference sequences:

Chain	Residue	Modelled	Actual	Comment	Reference
A	253	ARG	LYS	CONFLICT	UNP P12851
B	253	ARG	LYS	CONFLICT	UNP P12851
C	253	ARG	LYS	CONFLICT	UNP P12851
D	253	ARG	LYS	CONFLICT	UNP P12851

- Molecule 2 is SUGAR (D-XYLOSE (LINEAR FORM)) (three-letter code: XYL) (formula: C<sub>5</sub>H<sub>12</sub>O<sub>5</sub>).



Mol	Chain	Residues	Atoms			ZeroOcc	AltConf
2	A	1	Total	C	O	0	0
			10	5	5		
2	B	1	Total	C	O	0	0
			10	5	5		
2	C	1	Total	C	O	0	0
			10	5	5		
2	D	1	Total	C	O	0	0
			10	5	5		

- Molecule 3 is MAGNESIUM ION (three-letter code: MG) (formula: Mg).

Mol	Chain	Residues	Atoms		ZeroOcc	AltConf
3	B	2	Total	Mg	0	0
			2	2		
3	A	2	Total	Mg	0	0
			2	2		
3	D	2	Total	Mg	0	0
			2	2		
3	C	2	Total	Mg	0	0
			2	2		

- Molecule 4 is water.

Mol	Chain	Residues	Atoms		ZeroOcc	AltConf
4	A	230	Total	O	0	0
			230	230		

*Continued on next page...*

*Continued from previous page...*

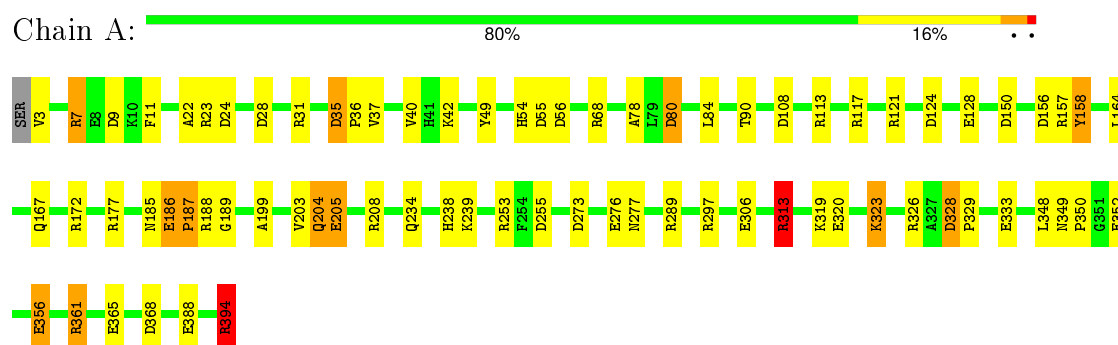
Mol	Chain	Residues	Atoms		ZeroOcc	AltConf
4	B	231	Total 231	O 231	0	0
4	C	236	Total 236	O 236	0	0
4	D	222	Total 222	O 222	0	0

### 3 Residue-property plots [i](#)

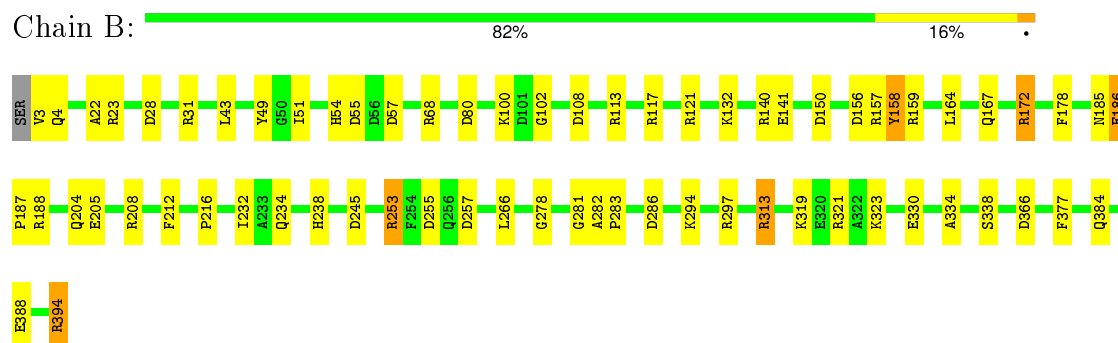
These plots are drawn for all protein, RNA and DNA chains in the entry. The first graphic for a chain summarises the proportions of errors displayed in the second graphic. The second graphic shows the sequence view annotated by issues in geometry and electron density. Residues are color-coded according to the number of geometric quality criteria for which they contain at least one outlier: green = 0, yellow = 1, orange = 2 and red = 3 or more. A red dot above a residue indicates a poor fit to the electron density ( $RSRZ > 2$ ). Stretches of 2 or more consecutive residues without any outlier are shown as a green connector. Residues present in the sample, but not in the model, are shown in grey.

Note EDS was not executed.

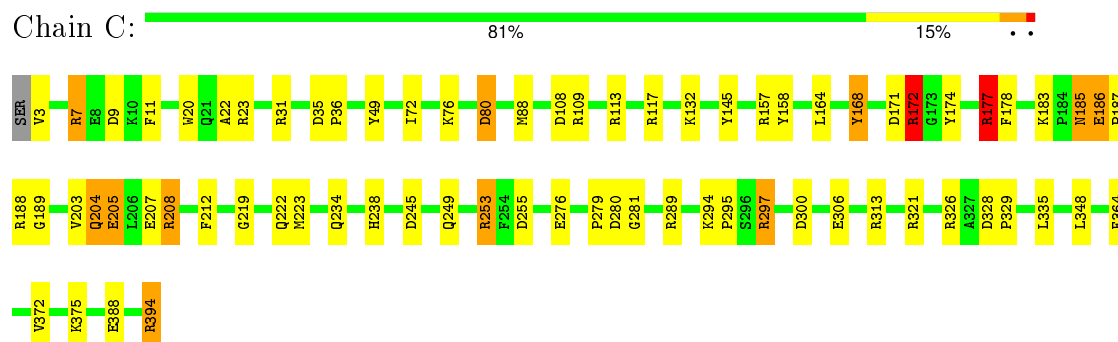
#### • Molecule 1: D-XYLOSE ISOMERASE



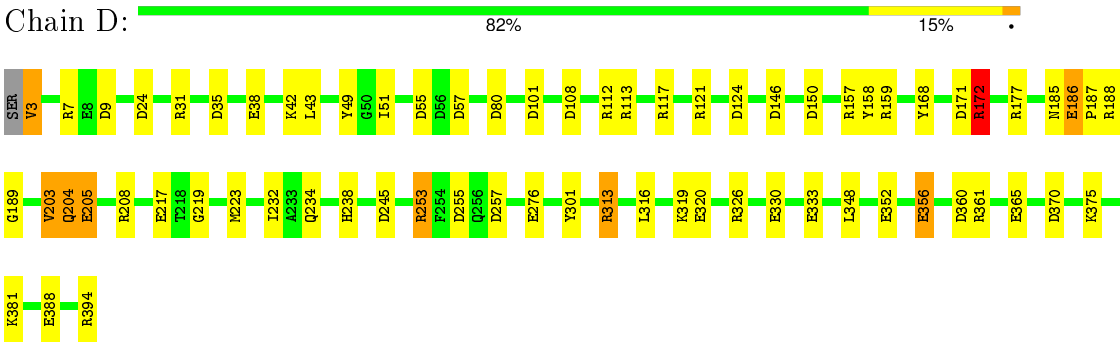
#### • Molecule 1: D-XYLOSE ISOMERASE



#### • Molecule 1: D-XYLOSE ISOMERASE



● Molecule 1: D-XYLOSE ISOMERASE



## 4 Data and refinement statistics

Xtriage (Phenix) and EDS were not executed - this section will therefore be incomplete.

Property	Value	Source
Space group	P 32 2 1	Depositor
Cell constants a, b, c, $\alpha$ , $\beta$ , $\gamma$	143.45Å 143.45Å 231.50Å 90.00° 90.00° 120.00°	Depositor
Resolution (Å)	(Not available) – 2.30	Depositor
% Data completeness (in resolution range)	(Not available) ((Not available)-2.30)	Depositor
$R_{merge}$	(Not available)	Depositor
$R_{sym}$	(Not available)	Depositor
Refinement program	PROLSQ	Depositor
R, $R_{free}$	0.149 , (Not available)	Depositor
Estimated twinning fraction	No twinning to report.	Xtriage
Total number of atoms	13187	wwPDB-VP
Average B, all atoms (Å <sup>2</sup> )	18.0	wwPDB-VP



## 5 Model quality

### 5.1 Standard geometry

Bond lengths and bond angles in the following residue types are not validated in this section: MG, XYL

The Z score for a bond length (or angle) is the number of standard deviations the observed value is removed from the expected value. A bond length (or angle) with  $|Z| > 5$  is considered an outlier worth inspection. RMSZ is the root-mean-square of all Z scores of the bond lengths (or angles).

Mol	Chain	Bond lengths		Bond angles	
		RMSZ	# Z  >5	RMSZ	# Z  >5
1	A	0.80	0/3127	1.62	51/4236 (1.2%)
1	B	0.81	0/3127	1.66	48/4236 (1.1%)
1	C	0.82	0/3127	1.73	51/4236 (1.2%)
1	D	0.82	0/3127	1.60	53/4236 (1.3%)
All	All	0.81	0/12508	1.65	203/16944 (1.2%)

There are no bond length outliers.

All (203) bond angle outliers are listed below:

Mol	Chain	Res	Type	Atoms	Z	Observed(°)	Ideal(°)
1	C	313	ARG	CD-NE-CZ	34.16	171.43	123.60
1	B	313	ARG	CD-NE-CZ	21.04	153.06	123.60
1	B	117	ARG	NE-CZ-NH1	17.94	129.27	120.30
1	B	313	ARG	NE-CZ-NH2	15.20	127.90	120.30
1	C	253	ARG	NE-CZ-NH1	15.16	127.88	120.30
1	C	7	ARG	NE-CZ-NH1	13.60	127.10	120.30
1	B	394	ARG	NE-CZ-NH2	-13.25	113.67	120.30
1	B	157	ARG	NE-CZ-NH1	13.10	126.85	120.30
1	D	117	ARG	NE-CZ-NH1	12.82	126.71	120.30
1	C	313	ARG	NE-CZ-NH2	12.81	126.71	120.30
1	D	150	ASP	CB-CG-OD1	12.55	129.60	118.30
1	C	117	ARG	NE-CZ-NH1	12.52	126.56	120.30
1	A	80	ASP	CB-CG-OD1	-12.34	107.19	118.30
1	B	255	ASP	CB-CG-OD2	-12.21	107.31	118.30
1	C	208	ARG	NE-CZ-NH1	-11.75	114.42	120.30
1	A	121	ARG	NE-CZ-NH2	-11.65	114.47	120.30
1	D	255	ASP	CB-CG-OD1	11.51	128.66	118.30
1	C	172	ARG	NE-CZ-NH1	-11.30	114.65	120.30
1	B	253	ARG	NE-CZ-NH2	-11.18	114.71	120.30
1	C	31	ARG	NE-CZ-NH1	11.05	125.82	120.30

*Continued on next page...*

*Continued from previous page...*

Mol	Chain	Res	Type	Atoms	Z	Observed(°)	Ideal(°)
1	D	121	ARG	NE-CZ-NH2	-10.94	114.83	120.30
1	C	289	ARG	NE-CZ-NH2	-10.90	114.85	120.30
1	D	330	GLU	OE1-CD-OE2	10.58	135.99	123.30
1	A	113	ARG	NE-CZ-NH1	10.43	125.52	120.30
1	B	330	GLU	OE1-CD-OE2	10.35	135.71	123.30
1	C	326	ARG	NE-CZ-NH2	10.23	125.42	120.30
1	B	68	ARG	NE-CZ-NH1	-10.14	115.23	120.30
1	B	117	ARG	NE-CZ-NH2	-10.04	115.28	120.30
1	A	117	ARG	NE-CZ-NH1	9.80	125.20	120.30
1	D	35	ASP	CB-CG-OD1	9.76	127.08	118.30
1	A	121	ARG	NE-CZ-NH1	9.75	125.18	120.30
1	B	80	ASP	CB-CG-OD1	-9.70	109.57	118.30
1	A	7	ARG	NE-CZ-NH1	9.54	125.07	120.30
1	A	205	GLU	OE1-CD-OE2	-9.54	111.86	123.30
1	B	253	ARG	NE-CZ-NH1	9.51	125.05	120.30
1	D	159	ARG	NE-CZ-NH1	9.39	125.00	120.30
1	B	140	ARG	NE-CZ-NH2	-9.37	115.62	120.30
1	C	208	ARG	CD-NE-CZ	-9.22	110.69	123.60
1	D	112	ARG	NE-CZ-NH1	8.86	124.73	120.30
1	D	9	ASP	CB-CG-OD2	8.82	126.24	118.30
1	A	361	ARG	NE-CZ-NH1	8.76	124.68	120.30
1	B	23	ARG	NE-CZ-NH2	-8.71	115.94	120.30
1	C	313	ARG	NH1-CZ-NH2	-8.63	109.91	119.40
1	C	394	ARG	NE-CZ-NH1	-8.62	115.99	120.30
1	A	188	ARG	CD-NE-CZ	8.62	135.66	123.60
1	A	394	ARG	NE-CZ-NH2	-8.58	116.01	120.30
1	A	124	ASP	CB-CG-OD1	8.57	126.01	118.30
1	A	394	ARG	NE-CZ-NH1	-8.57	116.01	120.30
1	C	117	ARG	NE-CZ-NH2	-8.55	116.02	120.30
1	B	159	ARG	NE-CZ-NH1	8.49	124.55	120.30
1	C	245	ASP	CB-CG-OD1	8.42	125.88	118.30
1	C	157	ARG	NE-CZ-NH1	8.39	124.50	120.30
1	A	7	ARG	CD-NE-CZ	8.37	135.31	123.60
1	D	172	ARG	CD-NE-CZ	8.22	135.10	123.60
1	D	7	ARG	NE-CZ-NH1	8.17	124.39	120.30
1	C	80	ASP	CB-CG-OD2	-8.15	110.97	118.30
1	B	23	ARG	NE-CZ-NH1	8.04	124.32	120.30
1	B	150	ASP	CB-CG-OD1	7.99	125.50	118.30
1	C	297	ARG	NE-CZ-NH2	7.96	124.28	120.30
1	A	326	ARG	NE-CZ-NH1	7.95	124.28	120.30
1	D	159	ARG	NE-CZ-NH2	-7.92	116.34	120.30
1	B	57	ASP	CB-CG-OD2	7.88	125.39	118.30

*Continued on next page...*

*Continued from previous page...*

Mol	Chain	Res	Type	Atoms	Z	Observed(°)	Ideal(°)
1	A	23	ARG	NE-CZ-NH1	7.86	124.23	120.30
1	A	394	ARG	NH1-CZ-NH2	7.78	127.96	119.40
1	D	245	ASP	CB-CG-OD1	7.75	125.27	118.30
1	D	171	ASP	CB-CG-OD2	-7.72	111.35	118.30
1	D	117	ARG	NE-CZ-NH2	-7.71	116.45	120.30
1	A	150	ASP	CB-CG-OD1	7.70	125.23	118.30
1	A	328	ASP	CB-CG-OD2	7.64	125.18	118.30
1	A	24	ASP	CB-CG-OD1	7.60	125.14	118.30
1	A	273	ASP	CB-CG-OD1	7.56	125.10	118.30
1	D	24	ASP	CB-CG-OD2	-7.47	111.57	118.30
1	D	326	ARG	NE-CZ-NH2	7.47	124.03	120.30
1	D	157	ARG	NE-CZ-NH2	7.45	124.03	120.30
1	B	321	ARG	NE-CZ-NH2	-7.41	116.60	120.30
1	C	300	ASP	CB-CG-OD2	7.37	124.93	118.30
1	C	205	GLU	OE1-CD-OE2	-7.30	114.54	123.30
1	A	313	ARG	CD-NE-CZ	-7.29	113.40	123.60
1	D	370	ASP	CB-CG-OD2	7.28	124.85	118.30
1	C	7	ARG	NH1-CZ-NH2	-7.27	111.40	119.40
1	D	257	ASP	CB-CG-OD1	7.17	124.75	118.30
1	C	174	TYR	CB-CG-CD2	-7.16	116.70	121.00
1	C	321	ARG	NE-CZ-NH1	7.14	123.87	120.30
1	A	289	ARG	NE-CZ-NH1	-7.13	116.73	120.30
1	C	174	TYR	CB-CG-CD1	7.10	125.26	121.00
1	B	394	ARG	CD-NE-CZ	-7.06	113.72	123.60
1	A	157	ARG	NE-CZ-NH1	7.02	123.81	120.30
1	A	320	GLU	OE1-CD-OE2	-6.92	115.00	123.30
1	A	253	ARG	CD-NE-CZ	6.91	133.28	123.60
1	D	24	ASP	CB-CG-OD1	6.90	124.51	118.30
1	B	158	TYR	CB-CG-CD2	6.87	125.12	121.00
1	D	313	ARG	NE-CZ-NH1	6.86	123.73	120.30
1	A	31	ARG	NE-CZ-NH2	-6.83	116.88	120.30
1	D	101	ASP	CB-CG-OD2	6.83	124.44	118.30
1	D	253	ARG	CD-NE-CZ	6.81	133.13	123.60
1	A	253	ARG	NE-CZ-NH1	6.75	123.68	120.30
1	C	188	ARG	NE-CZ-NH2	6.75	123.67	120.30
1	C	297	ARG	NE-CZ-NH1	-6.75	116.93	120.30
1	C	171	ASP	CB-CG-OD2	-6.71	112.26	118.30
1	B	23	ARG	CD-NE-CZ	6.65	132.91	123.60
1	B	121	ARG	NE-CZ-NH1	6.65	123.62	120.30
1	C	255	ASP	CB-CG-OD1	6.65	124.28	118.30
1	C	276	GLU	CG-CD-OE2	6.65	131.59	118.30
1	A	80	ASP	CA-CB-CG	-6.64	98.80	113.40

*Continued on next page...*

*Continued from previous page...*

Mol	Chain	Res	Type	Atoms	Z	Observed(°)	Ideal(°)
1	D	113	ARG	NE-CZ-NH1	6.62	123.61	120.30
1	A	35	ASP	CB-CG-OD2	6.61	124.25	118.30
1	A	28	ASP	CB-CG-OD1	-6.53	112.42	118.30
1	D	203	VAL	CA-CB-CG1	6.52	120.68	110.90
1	D	208	ARG	CD-NE-CZ	-6.51	114.49	123.60
1	A	333	GLU	OE1-CD-OE2	6.44	131.03	123.30
1	A	156	ASP	CB-CG-OD1	6.40	124.06	118.30
1	A	255	ASP	CB-CG-OD2	-6.39	112.55	118.30
1	C	177	ARG	NE-CZ-NH1	6.35	123.48	120.30
1	B	245	ASP	CB-CG-OD1	6.34	124.00	118.30
1	D	330	GLU	CG-CD-OE2	-6.33	105.63	118.30
1	A	188	ARG	NE-CZ-NH1	6.33	123.47	120.30
1	A	204	GLN	OE1-CD-NE2	-6.33	107.35	121.90
1	B	55	ASP	CB-CG-OD1	6.29	123.96	118.30
1	B	330	GLU	CG-CD-OE2	-6.29	105.72	118.30
1	D	108	ASP	CB-CG-OD1	6.25	123.93	118.30
1	C	253	ARG	NH1-CZ-NH2	-6.17	112.61	119.40
1	C	313	ARG	NE-CZ-NH1	6.15	123.38	120.30
1	A	56	ASP	CB-CG-OD2	6.09	123.78	118.30
1	C	207	GLU	CG-CD-OE2	-6.08	106.13	118.30
1	C	88	MET	CA-CB-CG	6.05	123.59	113.30
1	B	257	ASP	CB-CG-OD2	6.04	123.74	118.30
1	B	394	ARG	NH1-CZ-NH2	6.03	126.03	119.40
1	C	255	ASP	CB-CG-OD2	-6.01	112.89	118.30
1	D	313	ARG	CA-CB-CG	6.01	126.62	113.40
1	B	188	ARG	CD-NE-CZ	5.96	131.95	123.60
1	D	326	ARG	NE-CZ-NH1	-5.96	117.32	120.30
1	D	257	ASP	CB-CG-OD2	-5.94	112.95	118.30
1	B	286	ASP	CB-CG-OD1	5.93	123.64	118.30
1	C	208	ARG	NH1-CZ-NH2	5.92	125.92	119.40
1	A	80	ASP	OD1-CG-OD2	5.89	134.49	123.30
1	A	368	ASP	CB-CG-OD1	5.86	123.57	118.30
1	C	108	ASP	CB-CG-OD1	5.85	123.57	118.30
1	B	113	ARG	NE-CZ-NH1	5.83	123.22	120.30
1	D	146	ASP	CB-CG-OD1	5.83	123.55	118.30
1	A	177	ARG	CD-NE-CZ	-5.80	115.48	123.60
1	B	68	ARG	NE-CZ-NH2	5.80	123.20	120.30
1	D	188	ARG	NE-CZ-NH2	5.78	123.19	120.30
1	C	306	GLU	CG-CD-OE1	5.78	129.86	118.30
1	B	108	ASP	CB-CG-OD1	5.73	123.46	118.30
1	C	109	ARG	NE-CZ-NH2	5.71	123.16	120.30
1	C	207	GLU	CG-CD-OE1	5.67	129.64	118.30

*Continued on next page...*

*Continued from previous page...*

Mol	Chain	Res	Type	Atoms	Z	Observed(°)	Ideal(°)
1	D	57	ASP	CB-CG-OD1	-5.67	113.20	118.30
1	D	360	ASP	CB-CG-OD1	-5.66	113.21	118.30
1	A	356	GLU	OE1-CD-OE2	-5.66	116.51	123.30
1	B	313	ARG	NH1-CZ-NH2	-5.64	113.20	119.40
1	B	255	ASP	N-CA-CB	-5.56	100.60	110.60
1	D	356	GLU	CG-CD-OE2	5.55	129.41	118.30
1	C	145	TYR	CB-CG-CD2	5.54	124.32	121.00
1	B	54	HIS	N-CA-CB	5.52	120.54	110.60
1	B	121	ARG	NE-CZ-NH2	-5.51	117.55	120.30
1	A	55	ASP	CB-CG-OD1	5.51	123.26	118.30
1	A	128	GLU	CG-CD-OE1	-5.49	107.32	118.30
1	D	204	GLN	OE1-CD-NE2	-5.49	109.28	121.90
1	A	68	ARG	NE-CZ-NH2	5.48	123.04	120.30
1	D	124	ASP	CB-CG-OD1	5.47	123.22	118.30
1	A	158	TYR	CB-CG-CD2	5.43	124.26	121.00
1	A	177	ARG	CB-CA-C	5.41	121.21	110.40
1	D	356	GLU	OE1-CD-OE2	-5.39	116.84	123.30
1	D	253	ARG	NE-CZ-NH1	5.36	122.98	120.30
1	C	7	ARG	CB-CG-CD	5.36	125.53	111.60
1	D	205	GLU	OE1-CD-OE2	-5.35	116.88	123.30
1	B	156	ASP	CB-CG-OD2	-5.34	113.49	118.30
1	D	388	GLU	CG-CD-OE1	-5.34	107.62	118.30
1	C	281	GLY	N-CA-C	-5.34	99.75	113.10
1	D	217	GLU	OE1-CD-OE2	5.34	129.71	123.30
1	A	7	ARG	NE-CZ-NH2	-5.33	117.63	120.30
1	C	113	ARG	NE-CZ-NH2	5.33	122.97	120.30
1	B	334	ALA	CB-CA-C	5.32	118.07	110.10
1	B	28	ASP	CB-CG-OD2	-5.31	113.52	118.30
1	C	204	GLN	OE1-CD-NE2	-5.31	109.69	121.90
1	D	255	ASP	CB-CG-OD2	-5.28	113.55	118.30
1	B	366	ASP	CB-CG-OD2	5.27	123.04	118.30
1	C	168	TYR	CB-CG-CD1	-5.26	117.85	121.00
1	D	150	ASP	CB-CG-OD2	-5.23	113.59	118.30
1	B	31	ARG	NE-CZ-NH1	5.22	122.91	120.30
1	C	205	GLU	CG-CD-OE2	5.21	128.72	118.30
1	B	113	ARG	NE-CZ-NH2	-5.20	117.70	120.30
1	C	326	ARG	NE-CZ-NH1	-5.20	117.70	120.30
1	B	157	ARG	NH1-CZ-NH2	-5.17	113.72	119.40
1	B	102	GLY	C-N-CA	5.16	133.13	122.30
1	C	306	GLU	CG-CD-OE2	-5.16	107.99	118.30
1	C	335	LEU	O-C-N	5.16	130.95	122.70
1	A	199	ALA	CB-CA-C	5.15	117.83	110.10

*Continued on next page...*

*Continued from previous page...*

Mol	Chain	Res	Type	Atoms	Z	Observed(°)	Ideal(°)
1	D	31	ARG	NE-CZ-NH1	5.15	122.87	120.30
1	D	205	GLU	CG-CD-OE2	5.14	128.58	118.30
1	D	320	GLU	CA-CB-CG	5.12	124.68	113.40
1	B	255	ASP	CB-CG-OD1	5.12	122.91	118.30
1	B	80	ASP	CB-CG-OD2	5.10	122.89	118.30
1	D	333	GLU	CG-CD-OE2	5.09	128.47	118.30
1	A	187	PRO	N-CA-C	5.08	125.32	112.10
1	A	108	ASP	CB-CG-OD2	5.08	122.87	118.30
1	A	172	ARG	NE-CZ-NH2	-5.07	117.77	120.30
1	D	316	LEU	CB-CA-C	5.06	119.81	110.20
1	B	141	GLU	OE1-CD-OE2	-5.04	117.25	123.30
1	D	55	ASP	CB-CG-OD1	5.04	122.84	118.30
1	C	171	ASP	CB-CG-OD1	5.04	122.83	118.30
1	A	253	ARG	NH1-CZ-NH2	-5.01	113.89	119.40
1	D	301	TYR	CB-CA-C	5.01	120.42	110.40

There are no chirality outliers.

There are no planarity outliers.

## 5.2 Too-close contacts ⓘ

In the following table, the Non-H and H(model) columns list the number of non-hydrogen atoms and hydrogen atoms in the chain respectively. The H(added) column lists the number of hydrogen atoms added and optimized by MolProbity. The Clashes column lists the number of clashes within the asymmetric unit, whereas Symm-Clashes lists symmetry related clashes.

Mol	Chain	Non-H	H(model)	H(added)	Clashes	Symm-Clashes
1	A	3055	0	2954	26	0
1	B	3055	0	2954	25	0
1	C	3055	0	2954	33	0
1	D	3055	0	2954	22	0
2	A	10	0	12	1	0
2	B	10	0	11	1	0
2	C	10	0	11	1	0
2	D	10	0	12	1	0
3	A	2	0	0	0	0
3	B	2	0	0	0	0
3	C	2	0	0	0	0
3	D	2	0	0	0	0
4	A	230	0	0	2	0
4	B	231	0	0	2	0

*Continued on next page...*

*Continued from previous page...*

Mol	Chain	Non-H	H(model)	H(added)	Clashes	Symm-Clashes
4	C	236	0	0	4	0
4	D	222	0	0	5	0
All	All	13187	0	11862	94	0

The all-atom clashscore is defined as the number of clashes found per 1000 atoms (including hydrogen atoms). The all-atom clashscore for this structure is 4.

All (94) close contacts within the same asymmetric unit are listed below, sorted by their clash magnitude.

Atom-1	Atom-2	Interatomic distance (Å)	Clash overlap (Å)
1:A:204:GLN:OE1	1:C:204:GLN:OE1	1.57	1.19
1:B:204:GLN:OE1	1:D:204:GLN:OE1	1.61	1.18
1:D:234:GLN:HE21	1:D:238:HIS:HE1	1.12	0.98
1:B:234:GLN:HE21	1:B:238:HIS:HE1	1.26	0.83
1:C:234:GLN:HE21	1:C:238:HIS:HE1	1.25	0.83
1:D:43:LEU:HD12	1:D:51:ILE:HD12	1.64	0.80
1:A:234:GLN:HE21	1:A:238:HIS:HE1	1.28	0.79
1:C:177:ARG:HD3	4:C:605:HOH:O	1.85	0.77
1:A:22:ALA:HB1	1:A:297:ARG:HG3	1.71	0.71
1:C:372:VAL:HA	1:C:375:LYS:HD2	1.77	0.67
1:A:313:ARG:HG3	4:A:627:HOH:O	1.94	0.67
1:D:3:VAL:HG23	4:D:569:HOH:O	1.93	0.67
1:A:205:GLU:OE2	1:C:238:HIS:HD2	1.78	0.66
1:A:238:HIS:HD2	1:C:205:GLU:OE2	1.79	0.64
1:A:36:PRO:O	1:A:40:VAL:HG23	1.99	0.63
1:A:167:GLN:OE1	1:A:208:ARG:NH2	2.28	0.62
1:B:238:HIS:HD2	1:D:205:GLU:OE2	1.82	0.61
1:D:38:GLU:O	1:D:42:LYS:HG2	2.02	0.60
1:D:234:GLN:HE21	1:D:238:HIS:CE1	2.04	0.60
1:C:22:ALA:HB1	1:C:297:ARG:HG3	1.83	0.60
1:B:43:LEU:HD12	1:B:51:ILE:HD12	1.87	0.57
1:D:394:ARG:HD2	4:D:598:HOH:O	2.05	0.57
2:C:397:XYL:H12	4:C:575:HOH:O	2.03	0.57
1:C:294:LYS:HE2	4:D:420:HOH:O	2.04	0.55
1:A:54:HIS:CD2	1:A:90:THR:HG23	2.41	0.55
1:B:294:LYS:HE2	4:B:547:HOH:O	2.07	0.55
1:B:3:VAL:HG12	1:B:4:GLN:H	1.71	0.55
1:B:22:ALA:HB1	1:B:297:ARG:HG3	1.88	0.54
1:B:164:LEU:C	1:B:164:LEU:HD23	2.28	0.53
1:B:164:LEU:HD12	1:D:348:LEU:HD11	1.89	0.53
1:C:168:TYR:O	1:C:172:ARG:HG2	2.10	0.52

*Continued on next page...*

*Continued from previous page...*

Atom-1	Atom-2	Interatomic distance (Å)	Clash overlap (Å)
1:D:394:ARG:NH1	4:D:598:HOH:O	2.07	0.51
1:D:168:TYR:O	1:D:172:ARG:HG2	2.11	0.50
1:A:277:ASN:OD1	1:A:323:LYS:HE3	2.13	0.49
1:B:167:GLN:OE1	1:B:208:ARG:NH2	2.45	0.49
1:B:205:GLU:OE2	1:D:238:HIS:HD2	1.95	0.49
1:C:72:ILE:O	1:C:76:LYS:HG3	2.14	0.48
1:A:9:ASP:HB3	1:A:11:PHE:CE2	2.49	0.48
2:D:397:XYL:H12	4:D:540:HOH:O	2.14	0.48
1:A:189:GLY:O	1:B:253:ARG:NH1	2.47	0.47
1:B:216:PRO:HG2	1:B:232:ILE:HD11	1.96	0.47
1:C:183:LYS:HE2	1:C:185:ASN:O	2.14	0.47
1:B:172:ARG:HB3	1:B:172:ARG:HE	1.32	0.47
1:C:189:GLY:O	1:D:253:ARG:NH1	2.47	0.47
1:C:20:TRP:CZ2	1:C:22:ALA:HA	2.50	0.47
1:B:100:LYS:NZ	1:D:375:LYS:O	2.43	0.47
1:B:178:PHE:HB2	1:B:212:PHE:CD2	2.50	0.47
1:C:253:ARG:NH1	1:D:189:GLY:O	2.48	0.46
1:C:177:ARG:NH2	4:C:585:HOH:O	2.30	0.46
1:A:388:GLU:HB3	1:A:394:ARG:HG2	1.98	0.46
1:A:306:GLU:HG2	1:D:381:LYS:HB2	1.97	0.46
2:B:397:XYL:H12	4:B:563:HOH:O	2.14	0.46
1:C:222:GLN:HE21	1:C:249:GLN:HB3	1.80	0.45
2:A:397:XYL:H3	4:A:593:HOH:O	2.15	0.45
1:C:208:ARG:HD3	1:C:208:ARG:HH11	1.25	0.45
1:D:361:ARG:HA	1:D:365:GLU:OE1	2.16	0.45
1:A:328:ASP:HA	1:A:329:PRO:HD2	1.76	0.44
1:B:234:GLN:HE21	1:B:238:HIS:CE1	2.18	0.44
1:D:219:GLY:O	1:D:223:MET:HG3	2.17	0.44
1:A:276:GLU:HG3	1:A:319:LYS:HG3	1.98	0.44
1:A:164:LEU:HD12	1:C:348:LEU:HD11	1.98	0.44
1:A:352:GLU:HG3	1:A:356:GLU:HB2	1.99	0.44
1:C:178:PHE:HB2	1:C:212:PHE:CD2	2.51	0.44
1:A:361:ARG:HA	1:A:365:GLU:OE1	2.18	0.43
1:C:168:TYR:O	1:C:172:ARG:CG	2.66	0.43
1:C:9:ASP:HB3	1:C:11:PHE:CE2	2.54	0.43
1:C:20:TRP:CE2	1:C:22:ALA:HA	2.53	0.43
1:A:204:GLN:CD	1:C:204:GLN:OE1	2.48	0.43
1:D:352:GLU:HG3	1:D:356:GLU:HB2	2.01	0.43
1:B:384:GLN:O	1:B:388:GLU:HG3	2.19	0.42
1:C:219:GLY:O	1:C:223:MET:HG3	2.19	0.42
1:B:394:ARG:HH11	1:B:394:ARG:HD3	1.55	0.42

*Continued on next page...*



*Continued from previous page...*

Atom-1	Atom-2	Interatomic distance (Å)	Clash overlap (Å)
1:C:394:ARG:HD3	1:C:394:ARG:HH11	1.55	0.42
1:A:35:ASP:HA	1:A:36:PRO:HD3	1.90	0.42
1:C:172:ARG:HE	1:C:172:ARG:HB3	1.04	0.42
1:A:348:LEU:HD11	1:C:164:LEU:HD12	2.01	0.42
1:C:294:LYS:HA	1:C:295:PRO:HD3	1.89	0.42
1:B:186:GLU:HA	1:B:187:PRO:HA	1.88	0.42
1:D:186:GLU:HA	1:D:187:PRO:HA	1.82	0.42
1:C:35:ASP:HA	1:C:36:PRO:HD3	1.77	0.42
1:A:349:ASN:HB3	1:A:350:PRO:HD2	2.02	0.42
1:B:338:SER:HA	1:B:377:PHE:O	2.20	0.41
1:C:186:GLU:HA	1:C:187:PRO:HA	1.92	0.41
1:C:23:ARG:HD2	4:C:614:HOH:O	2.19	0.41
1:D:276:GLU:HG3	1:D:319:LYS:HG3	2.01	0.41
1:A:37:VAL:HG13	1:A:78:ALA:HB2	2.02	0.41
1:B:313:ARG:NH2	1:C:388:GLU:OE1	2.54	0.41
1:B:319:LYS:O	1:B:323:LYS:HG2	2.21	0.41
1:D:232:ILE:HD13	1:D:232:ILE:HA	1.92	0.41
1:B:278:GLY:CA	1:B:282:ALA:O	2.70	0.40
1:A:238:HIS:O	1:A:239:LYS:HB2	2.21	0.40
1:C:328:ASP:HA	1:C:329:PRO:HD3	1.83	0.40
1:A:186:GLU:HA	1:A:187:PRO:HA	1.78	0.40
1:B:266:LEU:HA	1:B:266:LEU:HD23	1.88	0.40

There are no symmetry-related clashes.

## 5.3 Torsion angles ⓘ

### 5.3.1 Protein backbone ⓘ

In the following table, the Percentiles column shows the percent Ramachandran outliers of the chain as a percentile score with respect to all X-ray entries followed by that with respect to entries of similar resolution.

The Analysed column shows the number of residues for which the backbone conformation was analysed, and the total number of residues.

Mol	Chain	Analysed	Favoured	Allowed	Outliers	Percentiles	
1	A	390/393 (99%)	376 (96%)	13 (3%)	1 (0%)	46	57
1	B	390/393 (99%)	377 (97%)	11 (3%)	2 (0%)	34	41
1	C	390/393 (99%)	376 (96%)	10 (3%)	4 (1%)	19	21

*Continued on next page...*

*Continued from previous page...*

Mol	Chain	Analysed	Favoured	Allowed	Outliers	Percentiles	
1	D	390/393 (99%)	376 (96%)	13 (3%)	1 (0%)	46	57
All	All	1560/1572 (99%)	1505 (96%)	47 (3%)	8 (0%)	34	41

All (8) Ramachandran outliers are listed below:

Mol	Chain	Res	Type
1	C	280	ASP
1	A	186	GLU
1	B	186	GLU
1	C	186	GLU
1	D	186	GLU
1	C	364	PHE
1	C	279	PRO
1	B	281	GLY

### 5.3.2 Protein sidechains ⓘ

In the following table, the Percentiles column shows the percent sidechain outliers of the chain as a percentile score with respect to all X-ray entries followed by that with respect to entries of similar resolution.

The Analysed column shows the number of residues for which the sidechain conformation was analysed, and the total number of residues.

Mol	Chain	Analysed	Rotameric	Outliers	Percentiles	
1	A	306/310 (99%)	294 (96%)	12 (4%)	39	53
1	B	306/310 (99%)	300 (98%)	6 (2%)	63	79
1	C	306/310 (99%)	296 (97%)	10 (3%)	45	61
1	D	306/310 (99%)	297 (97%)	9 (3%)	50	66
All	All	1224/1240 (99%)	1187 (97%)	37 (3%)	48	65

All (37) residues with a non-rotameric sidechain are listed below:

Mol	Chain	Res	Type
1	A	3	VAL
1	A	7	ARG
1	A	42	LYS
1	A	49	TYR
1	A	80	ASP
1	A	84	LEU

*Continued on next page...*

*Continued from previous page...*

Mol	Chain	Res	Type
1	A	158	TYR
1	A	185	ASN
1	A	203	VAL
1	A	313	ARG
1	A	323	LYS
1	A	394	ARG
1	B	49	TYR
1	B	132	LYS
1	B	158	TYR
1	B	172	ARG
1	B	185	ASN
1	B	283	PRO
1	C	3	VAL
1	C	7	ARG
1	C	49	TYR
1	C	80	ASP
1	C	132	LYS
1	C	158	TYR
1	C	172	ARG
1	C	177	ARG
1	C	185	ASN
1	C	203	VAL
1	D	3	VAL
1	D	49	TYR
1	D	80	ASP
1	D	158	TYR
1	D	172	ARG
1	D	177	ARG
1	D	185	ASN
1	D	203	VAL
1	D	313	ARG

Some sidechains can be flipped to improve hydrogen bonding and reduce clashes. All (10) such sidechains are listed below:

Mol	Chain	Res	Type
1	A	185	ASN
1	A	204	GLN
1	A	238	HIS
1	B	204	GLN
1	B	238	HIS
1	C	185	ASN
1	C	222	GLN

*Continued on next page...*

*Continued from previous page...*

Mol	Chain	Res	Type
1	C	238	HIS
1	D	185	ASN
1	D	238	HIS

### 5.3.3 RNA [i](#)

There are no RNA molecules in this entry.

## 5.4 Non-standard residues in protein, DNA, RNA chains [i](#)

There are no non-standard protein/DNA/RNA residues in this entry.

## 5.5 Carbohydrates [i](#)

There are no carbohydrates in this entry.

## 5.6 Ligand geometry [i](#)

Of 12 ligands modelled in this entry, 8 are monoatomic - leaving 4 for Mogul analysis.

In the following table, the Counts columns list the number of bonds (or angles) for which Mogul statistics could be retrieved, the number of bonds (or angles) that are observed in the model and the number of bonds (or angles) that are defined in the chemical component dictionary. The Link column lists molecule types, if any, to which the group is linked. The Z score for a bond length (or angle) is the number of standard deviations the observed value is removed from the expected value. A bond length (or angle) with  $|Z| > 2$  is considered an outlier worth inspection. RMSZ is the root-mean-square of all Z scores of the bond lengths (or angles).

Mol	Type	Chain	Res	Link	Bond lengths			Bond angles		
					Counts	RMSZ	$\# Z  > 2$	Counts	RMSZ	$\# Z  > 2$
2	XYL	A	397	3	9,9,9	0.53	0	10,11,11	1.01	1 (10%)
2	XYL	B	397	3	9,9,9	0.49	0	10,11,11	2.25	2 (20%)
2	XYL	C	397	3	9,9,9	0.40	0	10,11,11	1.51	2 (20%)
2	XYL	D	397	3	9,9,9	0.76	0	10,11,11	1.07	1 (10%)

In the following table, the Chirals column lists the number of chiral outliers, the number of chiral centers analysed, the number of these observed in the model and the number defined in the chemical component dictionary. Similar counts are reported in the Torsion and Rings columns. '-' means no outliers of that kind were identified.

Mol	Type	Chain	Res	Link	Chirals	Torsions	Rings
2	XYL	A	397	3	-	0/12/12/12	0/0/0/0
2	XYL	B	397	3	-	0/12/12/12	0/0/0/0
2	XYL	C	397	3	-	0/12/12/12	0/0/0/0
2	XYL	D	397	3	-	0/12/12/12	0/0/0/0

There are no bond length outliers.

All (6) bond angle outliers are listed below:

Mol	Chain	Res	Type	Atoms	Z	Observed( $^{\circ}$ )	Ideal( $^{\circ}$ )
2	C	397	XYL	O5-C5-C4	-2.29	106.11	111.10
2	B	397	XYL	O5-C5-C4	-2.01	106.73	111.10
2	D	397	XYL	C5-C4-C3	2.11	117.44	112.48
2	A	397	XYL	O4-C4-C3	2.21	114.56	109.02
2	C	397	XYL	O4-C4-C3	3.17	116.99	109.02
2	B	397	XYL	O4-C4-C3	6.07	124.28	109.02

There are no chirality outliers.

There are no torsion outliers.

There are no ring outliers.

4 monomers are involved in 4 short contacts:

Mol	Chain	Res	Type	Clashes	Symm-Clashes
2	A	397	XYL	1	0
2	B	397	XYL	1	0
2	C	397	XYL	1	0
2	D	397	XYL	1	0

## 5.7 Other polymers [i](#)

There are no such residues in this entry.

## 5.8 Polymer linkage issues [i](#)

There are no chain breaks in this entry.

## 6 Fit of model and data ⓘ

### 6.1 Protein, DNA and RNA chains ⓘ

EDS was not executed - this section will therefore be empty.

### 6.2 Non-standard residues in protein, DNA, RNA chains ⓘ

EDS was not executed - this section will therefore be empty.

### 6.3 Carbohydrates ⓘ

EDS was not executed - this section will therefore be empty.

### 6.4 Ligands ⓘ

EDS was not executed - this section will therefore be empty.

### 6.5 Other polymers ⓘ

EDS was not executed - this section will therefore be empty.