



Full wwPDB X-ray Structure Validation Report ⓘ

Feb 1, 2016 – 10:26 PM GMT

PDB ID : 4XT1
Title : Structure of a nanobody-bound viral GPCR bound to human chemokine CX3CL1
Authors : Burg, J.S.; Jude, K.M.; Waghray, D.; Garcia, K.C.
Deposited on : 2015-01-22
Resolution : 2.89 Å(reported)

This is a Full wwPDB X-ray Structure Validation Report for a publicly released PDB entry.
We welcome your comments at validation@mail.wwpdb.org
A user guide is available at
<http://wwpdb.org/validation/2016/XrayValidationReportHelp>
with specific help available everywhere you see the ⓘ symbol.

The following versions of software and data (see [references ⓘ](#)) were used in the production of this report:

MolProbity : 4.02b-467
Mogul : 1.7 (RC4), CSD as536be (2015)
Xtriage (Phenix) : 1.9-1692
EDS : rb-20026688
Percentile statistics : 20151230.v01 (using entries in the PDB archive December 30th 2015)
Refmac : 5.8.0135
CCP4 : 6.5.0
Ideal geometry (proteins) : Engh & Huber (2001)
Ideal geometry (DNA, RNA) : Parkinson et al. (1996)
Validation Pipeline (wwPDB-VP) : trunk26865

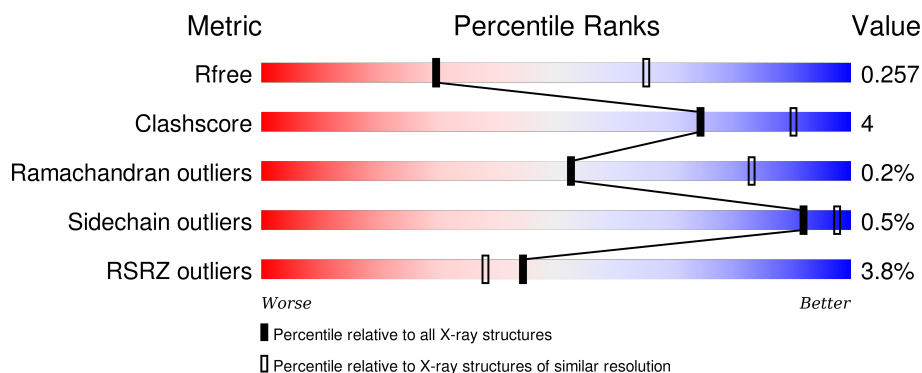
1 Overall quality at a glance

The following experimental techniques were used to determine the structure:

X-RAY DIFFRACTION

The reported resolution of this entry is 2.89 Å.

Percentile scores (ranging between 0-100) for global validation metrics of the entry are shown in the following graphic. The table shows the number of entries on which the scores are based.



Metric	Whole archive (#Entries)	Similar resolution (#Entries, resolution range(Å))
R_{free}	91344	1945 (2.90-2.86)
Clashscore	102246	2202 (2.90-2.86)
Ramachandran outliers	100387	2149 (2.90-2.86)
Sidechain outliers	100360	2152 (2.90-2.86)
RSRZ outliers	91569	1950 (2.90-2.86)

The table below summarises the geometric issues observed across the polymeric chains and their fit to the electron density. The red, orange, yellow and green segments on the lower bar indicate the fraction of residues that contain outliers for ≥ 3 , 2, 1 and 0 types of geometric quality criteria. A grey segment represents the fraction of residues that are not modelled. The numeric value for each fraction is indicated below the corresponding segment, with a dot representing fractions $\leq 5\%$. The upper red bar (where present) indicates the fraction of residues that have poor fit to the electron density. The numeric value is given above the bar.

Mol	Chain	Length	Quality of chain
1	A	362	<div> <div style="width: 100%; height: 10px; background-color: red;"></div> <div style="display: flex; justify-content: space-between; align-items: center;"> % </div> <div style="display: flex; justify-content: space-between; align-items: center;"> 73% 7% 20% </div> </div>
2	B	91	<div> <div style="width: 100%; height: 10px; background-color: red;"></div> <div style="display: flex; justify-content: space-between; align-items: center;"> 7% </div> <div style="display: flex; justify-content: space-between; align-items: center;"> 65% 10% 25% </div> </div>
3	C	134	<div> <div style="width: 100%; height: 10px; background-color: red;"></div> <div style="display: flex; justify-content: space-between; align-items: center;"> 5% </div> <div style="display: flex; justify-content: space-between; align-items: center;"> 81% • • 13% </div> </div>

The following table lists non-polymeric compounds, carbohydrate monomers and non-standard residues in protein, DNA, RNA chains that are outliers for geometric or electron-density-fit criteria:

Mol	Type	Chain	Res	Chirality	Geometry	Clashes	Electron density
4	CLR	A	401	-	-	-	X
4	CLR	A	402	-	-	-	X
5	OLC	A	403	-	-	-	X
5	OLC	A	404	-	-	-	X
5	OLC	A	405	-	-	-	X
5	OLC	A	406	-	-	-	X
5	OLC	A	407	-	-	-	X
5	OLC	A	408	-	-	-	X
6	UNL	A	410	-	-	-	X
6	UNL	A	413	-	-	-	X
6	UNL	A	414	-	-	-	X
6	UNL	A	415	-	-	-	X
7	SIN	A	416	-	-	-	X

2 Entry composition

There are 8 unique types of molecules in this entry. The entry contains 3978 atoms, of which 0 are hydrogens and 0 are deuteriums.

In the tables below, the ZeroOcc column contains the number of atoms modelled with zero occupancy, the AltConf column contains the number of residues with at least one atom in alternate conformation and the Trace column contains the number of residues modelled with at most 2 atoms.

- Molecule 1 is a protein called G-protein coupled receptor homolog US28.

Mol	Chain	Residues	Atoms					ZeroOcc	AltConf	Trace
1	A	291	Total	C	N	O	S	0	0	0
			2357	1582	362	393	20			

There are 8 discrepancies between the modelled and reference sequences:

Chain	Residue	Modelled	Actual	Comment	Reference
A	-7	ASP	-	expression tag	UNP P69332
A	-6	TYR	-	expression tag	UNP P69332
A	-5	LYS	-	expression tag	UNP P69332
A	-4	ASP	-	expression tag	UNP P69332
A	-3	ASP	-	expression tag	UNP P69332
A	-2	ASP	-	expression tag	UNP P69332
A	-1	ASP	-	expression tag	UNP P69332
A	0	ALA	-	expression tag	UNP P69332

- Molecule 2 is a protein called Fractalkine.

Mol	Chain	Residues	Atoms					ZeroOcc	AltConf	Trace
2	B	68	Total	C	N	O	S	0	0	0
			474	297	82	90	5			

There are 15 discrepancies between the modelled and reference sequences:

Chain	Residue	Modelled	Actual	Comment	Reference
B	9	ALA	ASN	engineered mutation	UNP P78423
B	78	SER	-	expression tag	UNP P78423
B	79	GLY	-	expression tag	UNP P78423
B	80	SER	-	expression tag	UNP P78423
B	81	GLY	-	expression tag	UNP P78423
B	82	SER	-	expression tag	UNP P78423
B	83	ALA	-	expression tag	UNP P78423
B	84	ALA	-	expression tag	UNP P78423

Continued on next page...

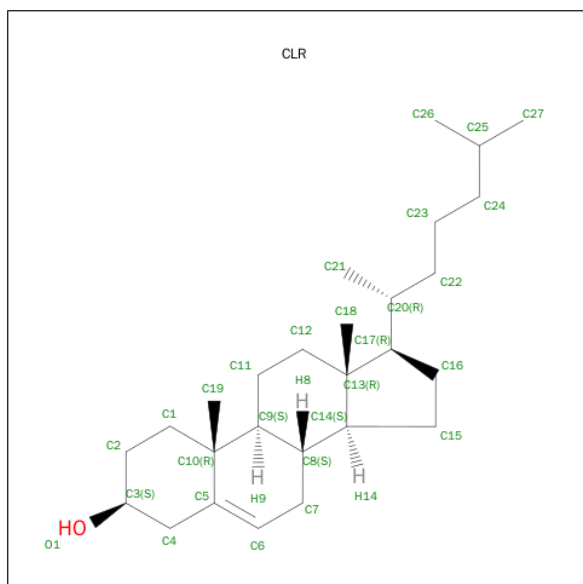
Continued from previous page...

Chain	Residue	Modelled	Actual	Comment	Reference
B	85	ALA	-	expression tag	UNP P78423
B	86	LEU	-	expression tag	UNP P78423
B	87	GLU	-	expression tag	UNP P78423
B	88	VAL	-	expression tag	UNP P78423
B	89	LEU	-	expression tag	UNP P78423
B	90	PHE	-	expression tag	UNP P78423
B	91	GLN	-	expression tag	UNP P78423

- Molecule 3 is a protein called nanobody 7.

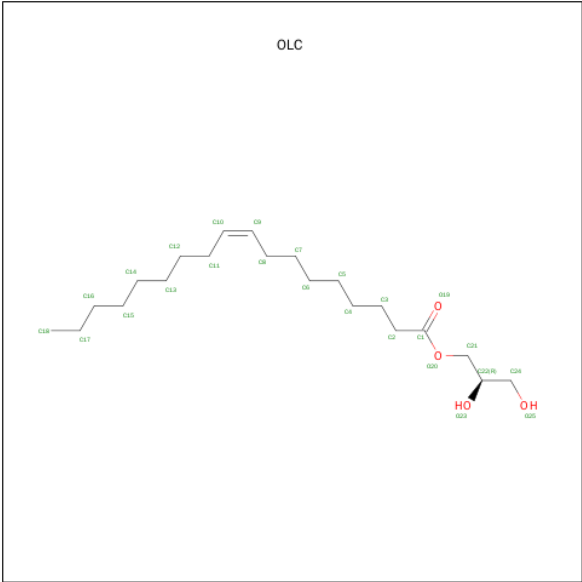
Mol	Chain	Residues	Atoms					ZeroOcc	AltConf	Trace
3	C	116	Total	C	N	O	S	0	0	0
			869	545	149	171	4			

- Molecule 4 is CHOLESTEROL (three-letter code: CLR) (formula: $C_{27}H_{46}O$).



Mol	Chain	Residues	Atoms			ZeroOcc	AltConf
4	A	1	Total	C	O	0	0
			28	27	1		
4	A	1	Total	C	O	0	0
			28	27	1		

- Molecule 5 is (2R)-2,3-dihydroxypropyl (9Z)-octadec-9-enoate (three-letter code: OLC) (formula: $C_{21}H_{40}O_4$).

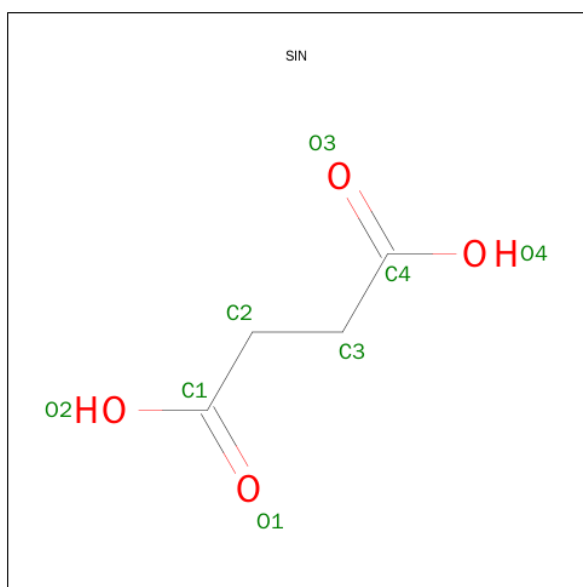


Mol	Chain	Residues	Atoms			ZeroOcc	AltConf
5	A	1	Total	C	O	0	0
			20	16	4		
5	A	1	Total	C	O	0	0
			20	16	4		
5	A	1	Total	C	O	0	0
			16	12	4		
5	A	1	Total	C	O	0	0
			21	17	4		
5	A	1	Total	C	O	0	0
			25	21	4		
5	A	1	Total	C	O	0	0
			14	10	4		

- Molecule 6 is UNKNOWN LIGAND (three-letter code: UNL) (formula:).

Mol	Chain	Residues	Atoms		ZeroOcc	AltConf
6	A	7	Total	C	0	0
			75	75		

- Molecule 7 is SUCCINIC ACID (three-letter code: SIN) (formula: C₄H₆O₄).



Mol	Chain	Residues	Atoms			ZeroOcc	AltConf
7	A	1	Total	C	O	0	0
			8	4	4		

- Molecule 8 is water.

Mol	Chain	Residues	Atoms		ZeroOcc	AltConf
8	A	18	Total	O	0	0
			18	18		
8	B	1	Total	O	0	0
			1	1		
8	C	4	Total	O	0	0
			4	4		

4 Data and refinement statistics

Property	Value	Source
Space group	I 4	Depositor
Cell constants a, b, c, α , β , γ	81.02Å 81.02Å 231.30Å 90.00° 90.00° 90.00°	Depositor
Resolution (Å)	38.23 – 2.89 38.23 – 2.89	Depositor EDS
% Data completeness (in resolution range)	99.6 (38.23-2.89) 94.3 (38.23-2.89)	Depositor EDS
R_{merge}	0.20	Depositor
R_{sym}	(Not available)	Depositor
$\langle I/\sigma(I) \rangle$ ¹	2.35 (at 2.90Å)	Xtriage
Refinement program	PHENIX	Depositor
R, R_{free}	0.199 , 0.249 0.205 , 0.257	Depositor DCC
R_{free} test set	1659 reflections (11.71%)	DCC
Wilson B-factor (Å ²)	52.6	Xtriage
Anisotropy	0.096	Xtriage
Bulk solvent k_{sol} (e/Å ³), B_{sol} (Å ²)	0.31 , 64.5	EDS
Estimated twinning fraction	0.056 for -h,k,-l	Xtriage
L-test for twinning ²	$\langle L \rangle = 0.48$, $\langle L^2 \rangle = 0.32$	Xtriage
Outliers	0 of 16648 reflections	Xtriage
F_o, F_c correlation	0.92	EDS
Total number of atoms	3978	wwPDB-VP
Average B, all atoms (Å ²)	66.0	wwPDB-VP

Xtriage's analysis on translational NCS is as follows: *The largest off-origin peak in the Patterson function is 6.45% of the height of the origin peak. No significant pseudotranslation is detected.*

¹Intensities estimated from amplitudes.

²Theoretical values of $\langle |L| \rangle$, $\langle L^2 \rangle$ for acentric reflections are 0.5, 0.375 respectively for untwinned datasets, and 0.333, 0.2 for perfectly twinned datasets.

5 Model quality [i](#)

5.1 Standard geometry [i](#)

Bond lengths and bond angles in the following residue types are not validated in this section: UNL, OLC, PCA, SIN, CLR

The Z score for a bond length (or angle) is the number of standard deviations the observed value is removed from the expected value. A bond length (or angle) with $|Z| > 5$ is considered an outlier worth inspection. RMSZ is the root-mean-square of all Z scores of the bond lengths (or angles).

Mol	Chain	Bond lengths		Bond angles	
		RMSZ	$\# Z > 5$	RMSZ	$\# Z > 5$
1	A	0.22	0/2423	0.36	0/3306
2	B	0.19	0/475	0.33	0/652
3	C	0.21	0/885	0.36	0/1202
All	All	0.21	0/3783	0.36	0/5160

There are no bond length outliers.

There are no bond angle outliers.

There are no chirality outliers.

There are no planarity outliers.

5.2 Too-close contacts [i](#)

In the following table, the Non-H and H(model) columns list the number of non-hydrogen atoms and hydrogen atoms in the chain respectively. The H(added) column lists the number of hydrogen atoms added and optimized by MolProbity. The Clashes column lists the number of clashes within the asymmetric unit, whereas Symm-Clashes lists symmetry related clashes.

Mol	Chain	Non-H	H(model)	H(added)	Clashes	Symm-Clashes
1	A	2357	0	2380	18	0
2	B	474	0	415	5	0
3	C	869	0	826	5	0
4	A	56	0	92	6	0
5	A	116	0	161	5	0
6	A	75	0	0	0	0
7	A	8	0	4	0	0
8	A	18	0	0	0	0
8	B	1	0	0	0	0
8	C	4	0	0	0	0
All	All	3978	0	3878	31	0

The all-atom clashscore is defined as the number of clashes found per 1000 atoms (including hydrogen atoms). The all-atom clashscore for this structure is 4.

All (31) close contacts within the same asymmetric unit are listed below, sorted by their clash magnitude.

Atom-1	Atom-2	Interatomic distance (Å)	Clash overlap (Å)
1:A:231:ILE:HG12	5:A:406:OLC:H2	1.80	0.63
1:A:243:PRO:HA	4:A:401:CLR:H161	1.82	0.61
1:A:246:LEU:HB3	4:A:401:CLR:H151	1.84	0.59
3:C:34:MET:HB2	3:C:78:VAL:HG21	1.86	0.56
1:A:234:VAL:HG11	5:A:406:OLC:H7A	1.88	0.56
1:A:121:PHE:O	1:A:125:ILE:HG12	2.08	0.53
1:A:54:VAL:HG13	1:A:292:VAL:HG21	1.89	0.52
1:A:27:ASP:OD2	1:A:267:ARG:NH2	2.45	0.50
3:C:71:ARG:HB3	3:C:78:VAL:HG22	1.95	0.49
1:A:70:VAL:O	1:A:74:ASN:ND2	2.36	0.49
1:A:35:VAL:HG13	5:A:403:OLC:H8A	1.95	0.48
2:B:6:THR:HG22	2:B:8:CYS:H	1.80	0.47
1:A:271:ARG:HD2	4:A:402:CLR:H42	1.98	0.46
1:A:209:TYR:CE2	5:A:407:OLC:H6A	2.50	0.46
4:A:401:CLR:H11	4:A:402:CLR:H11	1.98	0.46
1:A:194:LEU:HA	1:A:198:VAL:HB	1.99	0.45
4:A:402:CLR:H232	4:A:402:CLR:H211	1.62	0.45
2:B:19:ILE:HG21	2:B:57:TRP:CE3	2.51	0.45
2:B:38:ALA:HA	2:B:53:PRO:HD3	2.00	0.44
4:A:401:CLR:H232	4:A:401:CLR:H211	1.58	0.44
2:B:16:THR:HG21	2:B:49:PHE:HB3	2.01	0.43
2:B:18:LYS:HB2	2:B:18:LYS:HE3	1.85	0.43
3:C:100:THR:O	3:C:102:VAL:N	2.48	0.43
1:A:54:VAL:O	1:A:58:ILE:HG13	2.19	0.42
1:A:124:GLU:OE2	1:A:151:TRP:NE1	2.52	0.42
1:A:230:LEU:HD21	3:C:101:ILE:HD13	2.01	0.42
3:C:90:THR:HG23	3:C:115:THR:HA	2.02	0.41
5:A:403:OLC:H8	5:A:403:OLC:H11	1.70	0.41
1:A:158:ILE:HA	1:A:158:ILE:HD12	1.95	0.41
1:A:211:ILE:O	1:A:215:VAL:HG23	2.20	0.41
1:A:193:MET:HE1	1:A:249:PHE:HD1	1.86	0.41

There are no symmetry-related clashes.

5.3 Torsion angles

5.3.1 Protein backbone

In the following table, the Percentiles column shows the percent Ramachandran outliers of the chain as a percentile score with respect to all X-ray entries followed by that with respect to entries of similar resolution.

The Analysed column shows the number of residues for which the backbone conformation was analysed, and the total number of residues.

Mol	Chain	Analysed	Favoured	Allowed	Outliers	Percentiles	
1	A	287/362 (79%)	277 (96%)	9 (3%)	1 (0%)	46	78
2	B	66/91 (72%)	62 (94%)	4 (6%)	0	100	100
3	C	114/134 (85%)	111 (97%)	3 (3%)	0	100	100
All	All	467/587 (80%)	450 (96%)	16 (3%)	1 (0%)	52	83

All (1) Ramachandran outliers are listed below:

Mol	Chain	Res	Type
1	A	17	ASP

5.3.2 Protein sidechains

In the following table, the Percentiles column shows the percent sidechain outliers of the chain as a percentile score with respect to all X-ray entries followed by that with respect to entries of similar resolution.

The Analysed column shows the number of residues for which the sidechain conformation was analysed, and the total number of residues.

Mol	Chain	Analysed	Rotameric	Outliers	Percentiles	
1	A	260/334 (78%)	260 (100%)	0	100	100
2	B	43/72 (60%)	43 (100%)	0	100	100
3	C	87/105 (83%)	85 (98%)	2 (2%)	58	86
All	All	390/511 (76%)	388 (100%)	2 (0%)	92	97

All (2) residues with a non-rotameric sidechain are listed below:

Mol	Chain	Res	Type
3	C	71	ARG
3	C	100	THR

Some sidechains can be flipped to improve hydrogen bonding and reduce clashes. There are no such sidechains identified.

5.3.3 RNA ⓘ

There are no RNA molecules in this entry.

5.4 Non-standard residues in protein, DNA, RNA chains ⓘ

1 non-standard protein/DNA/RNA residue is modelled in this entry.

In the following table, the Counts columns list the number of bonds (or angles) for which Mogul statistics could be retrieved, the number of bonds (or angles) that are observed in the model and the number of bonds (or angles) that are defined in the chemical component dictionary. The Link column lists molecule types, if any, to which the group is linked. The Z score for a bond length (or angle) is the number of standard deviations the observed value is removed from the expected value. A bond length (or angle) with $|Z| > 2$ is considered an outlier worth inspection. RMSZ is the root-mean-square of all Z scores of the bond lengths (or angles).

Mol	Type	Chain	Res	Link	Bond lengths			Bond angles		
					Counts	RMSZ	# Z > 2	Counts	RMSZ	# Z > 2
2	PCA	B	1	2	7,8,9	1.53	1 (14%)	9,10,12	2.11	4 (44%)

In the following table, the Chirals column lists the number of chiral outliers, the number of chiral centers analysed, the number of these observed in the model and the number defined in the chemical component dictionary. Similar counts are reported in the Torsion and Rings columns. '-' means no outliers of that kind were identified.

Mol	Type	Chain	Res	Link	Chirals	Torsions	Rings
2	PCA	B	1	2	-	0/0/11/13	0/1/1/1

All (1) bond length outliers are listed below:

Mol	Chain	Res	Type	Atoms	Z	Observed(Å)	Ideal(Å)
2	B	1	PCA	CD-N	3.93	1.46	1.33

All (4) bond angle outliers are listed below:

Mol	Chain	Res	Type	Atoms	Z	Observed(°)	Ideal(°)
2	B	1	PCA	CB-CA-C	-3.21	108.38	112.76
2	B	1	PCA	CA-N-CD	-3.06	103.57	113.81
2	B	1	PCA	OE-CD-CG	-2.40	121.45	126.81
2	B	1	PCA	CB-CA-N	2.59	110.76	103.20

There are no chirality outliers.

There are no torsion outliers.

There are no ring outliers.

No monomer is involved in short contacts.

5.5 Carbohydrates [i](#)

There are no carbohydrates in this entry.

5.6 Ligand geometry [i](#)

Of 16 ligands modelled in this entry, 7 are unknown - leaving 9 for Mogul analysis.

In the following table, the Counts columns list the number of bonds (or angles) for which Mogul statistics could be retrieved, the number of bonds (or angles) that are observed in the model and the number of bonds (or angles) that are defined in the chemical component dictionary. The Link column lists molecule types, if any, to which the group is linked. The Z score for a bond length (or angle) is the number of standard deviations the observed value is removed from the expected value. A bond length (or angle) with $|Z| > 2$ is considered an outlier worth inspection. RMSZ is the root-mean-square of all Z scores of the bond lengths (or angles).

Mol	Type	Chain	Res	Link	Bond lengths			Bond angles		
					Counts	RMSZ	# $ Z > 2$	Counts	RMSZ	# $ Z > 2$
4	CLR	A	401	-	31,31,31	0.48	0	48,48,48	1.14	5 (10%)
4	CLR	A	402	-	31,31,31	0.48	0	48,48,48	1.05	2 (4%)
5	OLC	A	403	-	19,19,24	1.01	1 (5%)	19,20,25	0.92	1 (5%)
5	OLC	A	404	-	19,19,24	1.01	1 (5%)	19,20,25	0.93	1 (5%)
5	OLC	A	405	-	15,15,24	1.11	1 (6%)	16,16,25	0.90	1 (6%)
5	OLC	A	406	-	20,20,24	1.00	1 (5%)	20,21,25	0.99	2 (10%)
5	OLC	A	407	-	24,24,24	0.91	1 (4%)	25,25,25	0.92	2 (8%)
5	OLC	A	408	-	13,13,24	1.24	1 (7%)	14,14,25	1.05	1 (7%)
7	SIN	A	416	-	1,7,7	0.16	0	2,8,8	0.82	0

In the following table, the Chirals column lists the number of chiral outliers, the number of chiral centers analysed, the number of these observed in the model and the number defined in the chemical component dictionary. Similar counts are reported in the Torsion and Rings columns. '-' means no outliers of that kind were identified.

Mol	Type	Chain	Res	Link	Chirals	Torsions	Rings
4	CLR	A	401	-	-	0/10/68/68	0/4/4/4
4	CLR	A	402	-	-	0/10/68/68	0/4/4/4

Continued on next page...

Continued from previous page...

Mol	Type	Chain	Res	Link	Chirals	Torsions	Rings
5	OLC	A	403	-	-	0/19/19/24	0/0/0/0
5	OLC	A	404	-	-	0/19/19/24	0/0/0/0
5	OLC	A	405	-	-	0/15/15/24	0/0/0/0
5	OLC	A	406	-	-	0/20/20/24	0/0/0/0
5	OLC	A	407	-	-	0/24/24/24	0/0/0/0
5	OLC	A	408	-	-	0/13/13/24	0/0/0/0
7	SIN	A	416	-	-	0/1/5/5	0/0/0/0

All (6) bond length outliers are listed below:

Mol	Chain	Res	Type	Atoms	Z	Observed(Å)	Ideal(Å)
5	A	405	OLC	O20-C1	4.10	1.45	1.33
5	A	404	OLC	O20-C1	4.18	1.45	1.33
5	A	407	OLC	O20-C1	4.19	1.45	1.33
5	A	403	OLC	O20-C1	4.19	1.45	1.33
5	A	408	OLC	O20-C1	4.22	1.46	1.33
5	A	406	OLC	O20-C1	4.24	1.46	1.33

All (15) bond angle outliers are listed below:

Mol	Chain	Res	Type	Atoms	Z	Observed(°)	Ideal(°)
4	A	401	CLR	C13-C17-C20	-3.15	114.00	119.46
4	A	402	CLR	C13-C17-C20	-2.90	114.42	119.46
4	A	401	CLR	C13-C14-C8	-2.56	110.36	114.37
4	A	401	CLR	C8-C7-C6	-2.21	109.41	112.75
4	A	401	CLR	C10-C9-C8	-2.20	109.43	112.67
5	A	407	OLC	O20-C1-O19	-2.08	118.14	123.49
5	A	406	OLC	O20-C1-O19	-2.07	118.14	123.49
4	A	402	CLR	C13-C14-C8	-2.06	111.15	114.37
4	A	401	CLR	C11-C9-C10	-2.04	110.41	113.11
5	A	405	OLC	O20-C1-C2	2.35	119.06	111.90
5	A	403	OLC	O20-C1-C2	2.49	119.50	111.90
5	A	404	OLC	O20-C1-C2	2.61	119.85	111.90
5	A	407	OLC	O20-C1-C2	2.73	120.21	111.90
5	A	408	OLC	O20-C1-C2	2.82	120.49	111.90
5	A	406	OLC	O20-C1-C2	2.86	120.62	111.90

There are no chirality outliers.

There are no torsion outliers.

There are no ring outliers.

5 monomers are involved in 11 short contacts:

Mol	Chain	Res	Type	Clashes	Symm-Clashes
4	A	401	CLR	4	0
4	A	402	CLR	3	0
5	A	403	OLC	2	0
5	A	406	OLC	2	0
5	A	407	OLC	1	0

5.7 Other polymers [i](#)

There are no such residues in this entry.

5.8 Polymer linkage issues [i](#)

There are no chain breaks in this entry.

6 Fit of model and data

6.1 Protein, DNA and RNA chains

In the following table, the column labelled ‘#RSRZ> 2’ contains the number (and percentage) of RSRZ outliers, followed by percent RSRZ outliers for the chain as percentile scores relative to all X-ray entries and entries of similar resolution. The OWAB column contains the minimum, median, 95th percentile and maximum values of the occupancy-weighted average B-factor per residue. The column labelled ‘Q< 0.9’ lists the number of (and percentage) of residues with an average occupancy less than 0.9.

Mol	Chain	Analysed	<RSRZ>	#RSRZ>2	OWAB(Å ²)	Q<0.9
1	A	291/362 (80%)	-0.38	5 (1%) 73 71	30, 49, 89, 165	0
2	B	67/91 (73%)	0.45	6 (8%) 12 7	50, 107, 146, 162	0
3	C	116/134 (86%)	0.06	7 (6%) 25 19	40, 76, 119, 144	0
All	All	474/587 (80%)	-0.16	18 (3%) 44 38	30, 57, 123, 165	0

All (18) RSRZ outliers are listed below:

Mol	Chain	Res	Type	RSRZ
1	A	15	ASP	4.6
3	C	44	GLN	4.3
2	B	20	PRO	3.6
2	B	24	LEU	3.5
2	B	19	ILE	3.4
1	A	16	TYR	3.0
2	B	21	VAL	2.7
3	C	74	ALA	2.7
1	A	101	SER	2.6
2	B	22	ALA	2.5
2	B	43	THR	2.4
3	C	11	LEU	2.4
3	C	25	SER	2.3
3	C	1	GLN	2.3
3	C	12	VAL	2.2
3	C	87	PRO	2.2
1	A	179	TYR	2.1
1	A	182	VAL	2.0

6.2 Non-standard residues in protein, DNA, RNA chains [i](#)

In the following table, the Atoms column lists the number of modelled atoms in the group and the number defined in the chemical component dictionary. LLDF column lists the quality of electron density of the group with respect to its neighbouring residues in protein, DNA or RNA chains. The B-factors column lists the minimum, median, 95th percentile and maximum values of B factors of atoms in the group. The column labelled 'Q< 0.9' lists the number of atoms with occupancy less than 0.9.

Mol	Type	Chain	Res	Atoms	RSCC	RSR	LLDF	B-factors(Å ²)	Q<0.9
2	PCA	B	1	8/9	0.93	0.20	-	43,58,67,73	0

6.3 Carbohydrates [i](#)

There are no carbohydrates in this entry.

6.4 Ligands [i](#)

In the following table, the Atoms column lists the number of modelled atoms in the group and the number defined in the chemical component dictionary. LLDF column lists the quality of electron density of the group with respect to its neighbouring residues in protein, DNA or RNA chains. The B-factors column lists the minimum, median, 95th percentile and maximum values of B factors of atoms in the group. The column labelled 'Q< 0.9' lists the number of atoms with occupancy less than 0.9.

Mol	Type	Chain	Res	Atoms	RSCC	RSR	LLDF	B-factors(Å ²)	Q<0.9
7	SIN	A	416	8/8	0.90	0.35	9.53	73,86,98,107	0
5	OLC	A	405	16/25	0.79	0.36	9.51	58,90,106,109	0
4	CLR	A	401	28/28	0.85	0.43	8.09	78,100,112,120	0
5	OLC	A	407	25/25	0.76	0.30	7.29	49,73,114,122	0
5	OLC	A	403	20/25	0.64	0.39	6.43	43,78,125,126	0
5	OLC	A	406	21/25	0.88	0.29	6.05	52,74,94,95	0
5	OLC	A	404	20/25	0.79	0.29	4.88	69,81,106,107	0
4	CLR	A	402	28/28	0.88	0.25	4.19	63,78,92,101	0
5	OLC	A	408	14/25	0.74	0.28	4.06	56,89,116,123	0
6	UNL	A	410	12/-	0.88	0.27	3.41	40,64,82,83	0
6	UNL	A	415	12/-	0.78	0.31	3.38	57,67,77,95	0
6	UNL	A	414	12/-	0.88	0.30	2.72	56,61,66,70	0
6	UNL	A	413	10/-	0.92	0.22	2.17	42,52,62,65	0
6	UNL	A	412	12/-	0.90	0.20	1.06	39,56,68,75	0
6	UNL	A	409	7/-	0.88	0.19	0.94	47,55,64,66	0
6	UNL	A	411	10/-	0.90	0.27	-	54,64,78,85	0

6.5 Other polymers [i](#)

There are no such residues in this entry.