



Full wwPDB X-ray Structure Validation Report ⓘ

Feb 1, 2016 – 10:26 PM GMT

PDB ID : 4XW4
Title : X-ray structure of PKAc with AMPPNP, SP20, calcium ions
Authors : Gerlits, O.; Tian, J.; Das, A.; Taylor, S.; Langan, P.; Heller, T.W.; Kovalevsky, A.
Deposited on : 2015-01-28
Resolution : 1.82 Å(reported)

This is a Full wwPDB X-ray Structure Validation Report for a publicly released PDB entry.
We welcome your comments at validation@mail.wwpdb.org
A user guide is available at
<http://wwpdb.org/validation/2016/XrayValidationReportHelp>
with specific help available everywhere you see the ⓘ symbol.

The following versions of software and data (see [references ⓘ](#)) were used in the production of this report:

MolProbity : 4.02b-467
Mogul : 1.7 (RC4), CSD as536be (2015)
Xtriage (Phenix) : 1.9-1692
EDS : rb-20026688
Percentile statistics : 20151230.v01 (using entries in the PDB archive December 30th 2015)
Refmac : 5.8.0135
CCP4 : 6.5.0
Ideal geometry (proteins) : Engh & Huber (2001)
Ideal geometry (DNA, RNA) : Parkinson et al. (1996)
Validation Pipeline (wwPDB-VP) : trunk26865

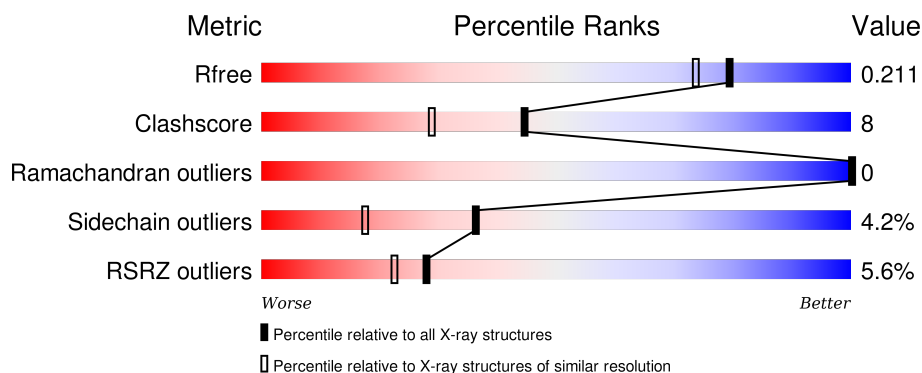
1 Overall quality at a glance

The following experimental techniques were used to determine the structure:

X-RAY DIFFRACTION


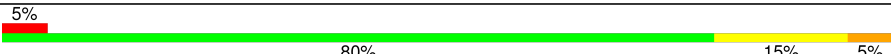
The reported resolution of this entry is 1.82 Å.

Percentile scores (ranging between 0-100) for global validation metrics of the entry are shown in the following graphic. The table shows the number of entries on which the scores are based.



Metric	Whole archive (#Entries)	Similar resolution (#Entries, resolution range(Å))
R_{free}	91344	5422 (1.84-1.80)
Clashscore	102246	6347 (1.84-1.80)
Ramachandran outliers	100387	6276 (1.84-1.80)
Sidechain outliers	100360	6276 (1.84-1.80)
RSRZ outliers	91569	5439 (1.84-1.80)

The table below summarises the geometric issues observed across the polymeric chains and their fit to the electron density. The red, orange, yellow and green segments on the lower bar indicate the fraction of residues that contain outliers for ≥ 3 , 2, 1 and 0 types of geometric quality criteria. A grey segment represents the fraction of residues that are not modelled. The numeric value for each fraction is indicated below the corresponding segment, with a dot representing fractions $\leq 5\%$. The upper red bar (where present) indicates the fraction of residues that have poor fit to the electron density. The numeric value is given above the bar.

Mol	Chain	Length	Quality of chain
1	A	356	 5% 79% 14% • 5%
2	B	20	 5% 80% 15% 5%

2 Entry composition

There are 5 unique types of molecules in this entry. The entry contains 3324 atoms, of which 0 are hydrogens and 0 are deuteriums.

In the tables below, the ZeroOcc column contains the number of atoms modelled with zero occupancy, the AltConf column contains the number of residues with at least one atom in alternate conformation and the Trace column contains the number of residues modelled with at most 2 atoms.

- Molecule 1 is a protein called cAMP-dependent protein kinase catalytic subunit alpha.

Mol	Chain	Residues	Atoms						ZeroOcc	AltConf	Trace
1	A	337	Total	C	N	O	P	S	0	2	0
			2793	1807	466	509	3	8			

There are 19 discrepancies between the modelled and reference sequences:

Chain	Residue	Modelled	Actual	Comment	Reference
A	-5	HIS	-	expression tag	UNP P05132
A	-4	HIS	-	expression tag	UNP P05132
A	-3	HIS	-	expression tag	UNP P05132
A	-2	HIS	-	expression tag	UNP P05132
A	-1	HIS	-	expression tag	UNP P05132
A	0	HIS	-	expression tag	UNP P05132
A	1	GLY	-	expression tag	UNP P05132
A	2	ASN	-	expression tag	UNP P05132
A	3	ALA	-	expression tag	UNP P05132
A	4	ALA	-	expression tag	UNP P05132
A	5	ALA	-	expression tag	UNP P05132
A	6	ALA	-	expression tag	UNP P05132
A	7	LYS	-	expression tag	UNP P05132
A	8	LYS	-	expression tag	UNP P05132
A	9	GLY	-	expression tag	UNP P05132
A	10	SER	-	expression tag	UNP P05132
A	11	GLU	-	expression tag	UNP P05132
A	12	GLN	-	expression tag	UNP P05132
A	13	GLU	-	expression tag	UNP P05132

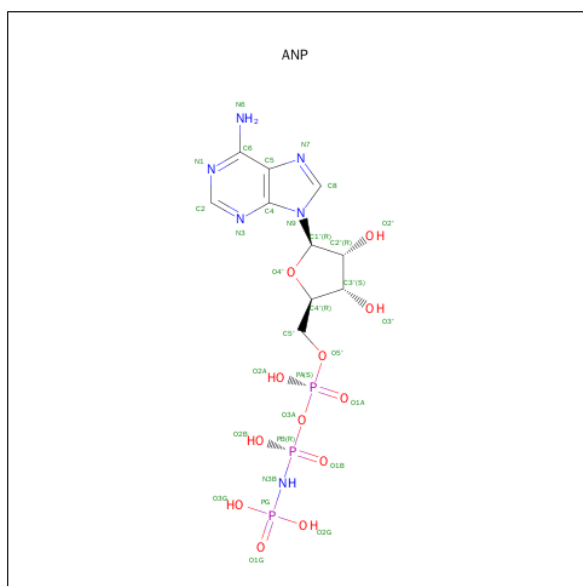
- Molecule 2 is a protein called cAMP-dependent protein kinase inhibitor alpha.

Mol	Chain	Residues	Atoms				ZeroOcc	AltConf	Trace
2	B	20	Total	C	N	O	0	0	0
			155	93	31	31			

- Molecule 3 is CALCIUM ION (three-letter code: CA) (formula: Ca).

Mol	Chain	Residues	Atoms		ZeroOcc	AltConf
3	A	2	Total	Ca	0	0
			2	2		

- Molecule 4 is PHOSPHOAMINOPHOSPHONIC ACID-ADENYLATE ESTER (three-letter code: ANP) (formula: C₁₀H₁₇N₆O₁₂P₃).



Mol	Chain	Residues	Atoms					ZeroOcc	AltConf
4	A	1	Total	C	N	O	P	0	0
			31	10	6	12	3		

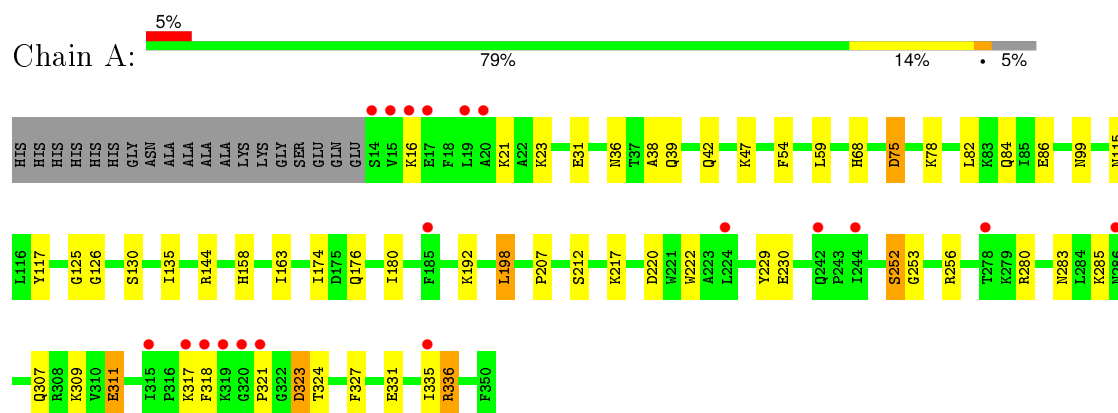
- Molecule 5 is water.

Mol	Chain	Residues	Atoms		ZeroOcc	AltConf
5	A	315	Total	O	0	0
			315	315		
5	B	28	Total	O	0	0
			28	28		

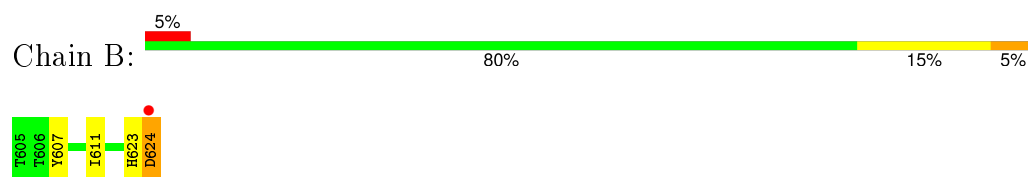
3 Residue-property plots [i](#)

These plots are drawn for all protein, RNA and DNA chains in the entry. The first graphic for a chain summarises the proportions of errors displayed in the second graphic. The second graphic shows the sequence view annotated by issues in geometry and electron density. Residues are color-coded according to the number of geometric quality criteria for which they contain at least one outlier: green = 0, yellow = 1, orange = 2 and red = 3 or more. A red dot above a residue indicates a poor fit to the electron density ($RSRZ > 2$). Stretches of 2 or more consecutive residues without any outlier are shown as a green connector. Residues present in the sample, but not in the model, are shown in grey.

- Molecule 1: cAMP-dependent protein kinase catalytic subunit alpha



- Molecule 2: cAMP-dependent protein kinase inhibitor alpha



4 Data and refinement statistics

Property	Value	Source
Space group	P 21 21 21	Depositor
Cell constants a, b, c, α , β , γ	56.36Å 78.82Å 97.98Å 90.00° 90.00° 90.00°	Depositor
Resolution (Å)	20.00 – 1.82 33.48 – 1.82	Depositor EDS
% Data completeness (in resolution range)	91.9 (20.00-1.82) 89.1 (33.48-1.82)	Depositor EDS
R_{merge}	0.04	Depositor
R_{sym}	(Not available)	Depositor
$\langle I/\sigma(I) \rangle$ ¹	2.82 (at 1.82Å)	Xtriage
Refinement program	SHELXL-97	Depositor
R, R_{free}	0.184 , 0.240 0.173 , 0.211	Depositor DCC
R_{free} test set	1833 reflections (5.43%)	DCC
Wilson B-factor (Å ²)	17.4	Xtriage
Anisotropy	0.029	Xtriage
Bulk solvent k_{sol} (e/Å ³), B_{sol} (Å ²)	0.33 , 71.5	EDS
Estimated twinning fraction	No twinning to report.	Xtriage
L-test for twinning ²	$\langle L \rangle = 0.49$, $\langle L^2 \rangle = 0.32$	Xtriage
Outliers	0 of 36641 reflections	Xtriage
F_o, F_c correlation	0.96	EDS
Total number of atoms	3324	wwPDB-VP
Average B, all atoms (Å ²)	27.0	wwPDB-VP

Xtriage's analysis on translational NCS is as follows: *The largest off-origin peak in the Patterson function is 5.87% of the height of the origin peak. No significant pseudotranslation is detected.*

¹Intensities estimated from amplitudes.

²Theoretical values of $\langle |L| \rangle$, $\langle L^2 \rangle$ for acentric reflections are 0.5, 0.375 respectively for untwinned datasets, and 0.333, 0.2 for perfectly twinned datasets.

5 Model quality ⓘ

5.1 Standard geometry ⓘ

Bond lengths and bond angles in the following residue types are not validated in this section: TPO, CA, ANP, SEP

The Z score for a bond length (or angle) is the number of standard deviations the observed value is removed from the expected value. A bond length (or angle) with $|Z| > 5$ is considered an outlier worth inspection. RMSZ is the root-mean-square of all Z scores of the bond lengths (or angles).

Mol	Chain	Bond lengths		Bond angles	
		RMSZ	$\# Z > 5$	RMSZ	$\# Z > 5$
1	A	0.62	1/2836 (0.0%)	1.00	6/3817 (0.2%)
2	B	0.68	0/157	0.86	0/209
All	All	0.63	1/2993 (0.0%)	1.00	6/4026 (0.1%)

All (1) bond length outliers are listed below:

Mol	Chain	Res	Type	Atoms	Z	Observed(Å)	Ideal(Å)
1	A	230	GLU	CD-OE1	-5.58	1.19	1.25

All (6) bond angle outliers are listed below:

Mol	Chain	Res	Type	Atoms	Z	Observed(°)	Ideal(°)
1	A	144	ARG	NE-CZ-NH1	-8.76	115.92	120.30
1	A	144	ARG	NE-CZ-NH2	7.50	124.05	120.30
1	A	323	ASP	CB-CG-OD1	6.51	124.16	118.30
1	A	280	ARG	NE-CZ-NH2	5.73	123.17	120.30
1	A	229	TYR	CB-CG-CD1	5.34	124.20	121.00
1	A	75	ASP	CB-CG-OD1	5.26	123.03	118.30

There are no chirality outliers.

There are no planarity outliers.

5.2 Too-close contacts ⓘ

In the following table, the Non-H and H(model) columns list the number of non-hydrogen atoms and hydrogen atoms in the chain respectively. The H(added) column lists the number of hydrogen atoms added and optimized by MolProbity. The Clashes column lists the number of clashes within the asymmetric unit, whereas Symm-Clashes lists symmetry related clashes.

Mol	Chain	Non-H	H(model)	H(added)	Clashes	Symm-Clashes
1	A	2793	0	2777	44	0
2	B	155	0	145	2	0
3	A	2	0	0	0	0
4	A	31	0	13	1	0
5	A	315	0	0	16	0
5	B	28	0	0	0	0
All	All	3324	0	2935	47	0

The all-atom clashscore is defined as the number of clashes found per 1000 atoms (including hydrogen atoms). The all-atom clashscore for this structure is 8.

All (47) close contacts within the same asymmetric unit are listed below, sorted by their clash magnitude.

Atom-1	Atom-2	Interatomic distance (Å)	Clash overlap (Å)
1:A:311:GLU:HG2	5:A:759:HOH:O	1.61	1.00
1:A:78:LYS:O	1:A:82:LEU:HD23	1.75	0.86
1:A:256:ARG:HH21	1:A:256:ARG:HG2	1.44	0.82
1:A:318:PHE:CE2	1:A:323:ASP:HB3	2.15	0.81
1:A:283:ASN:HB2	5:A:726:HOH:O	1.86	0.76
1:A:163:ILE:HG12	1:A:217:LYS:HG3	1.72	0.70
1:A:135:ILE:HD11	5:A:770:HOH:O	1.93	0.68
1:A:47:LYS:HE3	5:A:698:HOH:O	1.93	0.67
1:A:256:ARG:NH2	1:A:256:ARG:HG2	2.11	0.66
1:A:335:ILE:HG12	5:A:814:HOH:O	1.96	0.65
1:A:86:GLU:HG3	5:A:518:HOH:O	1.98	0.63
1:A:82:LEU:HD22	1:A:82:LEU:N	2.14	0.62
1:A:158:HIS:HE1	1:A:220:ASP:OD2	1.87	0.58
1:A:38:ALA:HA	1:A:42:GLN:HE22	1.69	0.58
1:A:158:HIS:HD2	5:A:724:HOH:O	1.87	0.57
1:A:135:ILE:CD1	5:A:770:HOH:O	2.48	0.57
2:B:623:HIS:HD2	2:B:624:ASP:OXT	1.88	0.56
1:A:336:ARG:HH11	1:A:336:ARG:CG	2.17	0.56
1:A:311:GLU:CG	5:A:759:HOH:O	2.34	0.54
1:A:39:GLN:H	1:A:42:GLN:NE2	2.07	0.53
1:A:336:ARG:NH1	1:A:336:ARG:CG	2.73	0.52
1:A:82:LEU:N	1:A:82:LEU:CD2	2.73	0.51
4:A:403:ANP:O1G	5:A:588:HOH:O	2.19	0.50
1:A:36:ASN:ND2	5:A:737:HOH:O	2.45	0.49
1:A:75:ASP:CG	1:A:78:LYS:HG3	2.33	0.49
1:A:318:PHE:HE2	1:A:323:ASP:HB3	1.73	0.48
1:A:198:LEU:C	1:A:198:LEU:HD12	2.33	0.48
1:A:321:PRO:HA	5:A:773:HOH:O	2.14	0.48

Continued on next page...

Continued from previous page...

Atom-1	Atom-2	Interatomic distance (Å)	Clash overlap (Å)
1:A:336:ARG:NH1	1:A:336:ARG:HG2	2.29	0.46
1:A:125:GLY:HA3	1:A:174:ILE:O	2.15	0.46
1:A:54:PHE:HZ	1:A:84:GLN:HG3	1.81	0.45
1:A:317:LYS:HD3	1:A:317:LYS:HA	1.86	0.44
1:A:59:LEU:HD22	1:A:324:THR:CG2	2.47	0.43
1:A:256:ARG:NH2	1:A:256:ARG:CG	2.79	0.43
1:A:115:ASN:HB2	1:A:117:TYR:CZ	2.53	0.43
1:A:311:GLU:O	1:A:311:GLU:HG3	2.18	0.43
1:A:99:ASN:HB2	5:A:550:HOH:O	2.18	0.43
1:A:68:HIS:HD2	5:A:772:HOH:O	2.01	0.43
1:A:252:SER:OG	1:A:253:GLY:N	2.50	0.42
1:A:126:GLY:HA2	1:A:327:PHE:CZ	2.55	0.42
2:B:607:TYR:CZ	2:B:611:ILE:HG13	2.54	0.42
1:A:207:PRO:HD3	1:A:222:TRP:CZ2	2.56	0.41
1:A:307:GLN:HE21	1:A:309:LYS:HD2	1.86	0.41
1:A:23:LYS:HB2	5:A:617:HOH:O	2.19	0.41
1:A:176:GLN:HG3	5:A:622:HOH:O	2.21	0.41
1:A:174:ILE:HD13	1:A:180:ILE:HD13	2.03	0.40
1:A:318:PHE:HA	1:A:318:PHE:HD2	1.68	0.40

There are no symmetry-related clashes.

5.3 Torsion angles

5.3.1 Protein backbone

In the following table, the Percentiles column shows the percent Ramachandran outliers of the chain as a percentile score with respect to all X-ray entries followed by that with respect to entries of similar resolution.

The Analysed column shows the number of residues for which the backbone conformation was analysed, and the total number of residues.

Mol	Chain	Analysed	Favoured	Allowed	Outliers	Percentiles	
1	A	334/356 (94%)	327 (98%)	7 (2%)	0	100	100
2	B	18/20 (90%)	16 (89%)	2 (11%)	0	100	100
All	All	352/376 (94%)	343 (97%)	9 (3%)	0	100	100

There are no Ramachandran outliers to report.

5.3.2 Protein sidechains ⓘ

In the following table, the Percentiles column shows the percent sidechain outliers of the chain as a percentile score with respect to all X-ray entries followed by that with respect to entries of similar resolution.

The Analysed column shows the number of residues for which the sidechain conformation was analysed, and the total number of residues.

Mol	Chain	Analysed	Rotameric	Outliers	Percentiles	
1	A	297/308 (96%)	285 (96%)	12 (4%)	38	19
2	B	15/15 (100%)	14 (93%)	1 (7%)	20	6
All	All	312/323 (97%)	299 (96%)	13 (4%)	36	17

All (13) residues with a non-rotameric sidechain are listed below:

Mol	Chain	Res	Type
1	A	16	LYS
1	A	21	LYS
1	A	31	GLU
1	A	130	SER
1	A	192	LYS
1	A	198	LEU
1	A	212	SER
1	A	252	SER
1	A	285	LYS
1	A	311	GLU
1	A	331	GLU
1	A	336	ARG
2	B	624	ASP

Some sidechains can be flipped to improve hydrogen bonding and reduce clashes. All (7) such sidechains are listed below:

Mol	Chain	Res	Type
1	A	36	ASN
1	A	42	GLN
1	A	113	ASN
1	A	158	HIS
1	A	286	ASN
1	A	307	GLN
2	B	623	HIS

5.3.3 RNA ⓘ

There are no RNA molecules in this entry.

5.4 Non-standard residues in protein, DNA, RNA chains ⓘ

3 non-standard protein/DNA/RNA residues are modelled in this entry.

In the following table, the Counts columns list the number of bonds (or angles) for which Mogul statistics could be retrieved, the number of bonds (or angles) that are observed in the model and the number of bonds (or angles) that are defined in the chemical component dictionary. The Link column lists molecule types, if any, to which the group is linked. The Z score for a bond length (or angle) is the number of standard deviations the observed value is removed from the expected value. A bond length (or angle) with $|Z| > 2$ is considered an outlier worth inspection. RMSZ is the root-mean-square of all Z scores of the bond lengths (or angles).

Mol	Type	Chain	Res	Link	Bond lengths			Bond angles		
					Counts	RMSZ	$\# Z > 2$	Counts	RMSZ	$\# Z > 2$
1	SEP	A	139	1	8,9,10	1.62	2 (25%)	8,12,14	2.30	2 (25%)
1	TPO	A	197	1	8,10,11	1.24	1 (12%)	7,14,16	1.01	0
1	SEP	A	338	1	8,9,10	1.26	1 (12%)	8,12,14	2.19	2 (25%)

In the following table, the Chirals column lists the number of chiral outliers, the number of chiral centers analysed, the number of these observed in the model and the number defined in the chemical component dictionary. Similar counts are reported in the Torsion and Rings columns. '-' means no outliers of that kind were identified.

Mol	Type	Chain	Res	Link	Chirals	Torsions	Rings
1	SEP	A	139	1	-	0/6/8/10	0/0/0/0
1	TPO	A	197	1	-	0/8/11/13	0/0/0/0
1	SEP	A	338	1	-	0/6/8/10	0/0/0/0

All (4) bond length outliers are listed below:

Mol	Chain	Res	Type	Atoms	Z	Observed(Å)	Ideal(Å)
1	A	139	SEP	P-O3P	2.14	1.62	1.54
1	A	338	SEP	P-O3P	2.29	1.62	1.54
1	A	197	TPO	P-O1P	2.61	1.59	1.51
1	A	139	SEP	P-O1P	3.51	1.62	1.51

All (4) bond angle outliers are listed below:

Mol	Chain	Res	Type	Atoms	Z	Observed(°)	Ideal(°)
1	A	139	SEP	OG-CB-CA	-5.02	103.99	108.27
1	A	139	SEP	O-C-CA	-3.23	117.08	125.49
1	A	338	SEP	OG-P-O1P	2.28	112.96	107.14
1	A	338	SEP	OG-CB-CA	5.46	112.93	108.27

There are no chirality outliers.

There are no torsion outliers.

There are no ring outliers.

No monomer is involved in short contacts.

5.5 Carbohydrates [i](#)

There are no carbohydrates in this entry.

5.6 Ligand geometry [i](#)

Of 3 ligands modelled in this entry, 2 are monoatomic - leaving 1 for Mogul analysis.

In the following table, the Counts columns list the number of bonds (or angles) for which Mogul statistics could be retrieved, the number of bonds (or angles) that are observed in the model and the number of bonds (or angles) that are defined in the chemical component dictionary. The Link column lists molecule types, if any, to which the group is linked. The Z score for a bond length (or angle) is the number of standard deviations the observed value is removed from the expected value. A bond length (or angle) with $|Z| > 2$ is considered an outlier worth inspection. RMSZ is the root-mean-square of all Z scores of the bond lengths (or angles).

Mol	Type	Chain	Res	Link	Bond lengths			Bond angles		
					Counts	RMSZ	$\# Z > 2$	Counts	RMSZ	$\# Z > 2$
4	ANP	A	403	3	27,33,33	1.93	6 (22%)	30,52,52	2.06	5 (16%)

In the following table, the Chirals column lists the number of chiral outliers, the number of chiral centers analysed, the number of these observed in the model and the number defined in the chemical component dictionary. Similar counts are reported in the Torsion and Rings columns. '-' means no outliers of that kind were identified.

Mol	Type	Chain	Res	Link	Chirals	Torsions	Rings
4	ANP	A	403	3	-	0/12/38/38	0/3/3/3

All (6) bond length outliers are listed below:

Mol	Chain	Res	Type	Atoms	Z	Observed(Å)	Ideal(Å)
4	A	403	ANP	PG-O3G	-3.08	1.48	1.56
4	A	403	ANP	PG-O2G	-2.33	1.50	1.56
4	A	403	ANP	C5-C4	3.52	1.48	1.40
4	A	403	ANP	PB-N3B	3.91	1.73	1.63
4	A	403	ANP	PG-N3B	4.11	1.74	1.63
4	A	403	ANP	PG-O1G	4.12	1.50	1.46

All (5) bond angle outliers are listed below:

Mol	Chain	Res	Type	Atoms	Z	Observed(°)	Ideal(°)
4	A	403	ANP	N3-C2-N1	-8.11	122.69	128.89
4	A	403	ANP	O1G-PG-N3B	-3.66	106.29	111.90
4	A	403	ANP	C1'-N9-C4	-2.54	123.11	126.94
4	A	403	ANP	C2'-C1'-N9	-2.04	111.17	114.29
4	A	403	ANP	O1B-PB-N3B	3.63	117.46	111.90

There are no chirality outliers.

There are no torsion outliers.

There are no ring outliers.

1 monomer is involved in 1 short contact:

Mol	Chain	Res	Type	Clashes	Symm-Clashes
4	A	403	ANP	1	0

5.7 Other polymers [i](#)

There are no such residues in this entry.

5.8 Polymer linkage issues [i](#)

There are no chain breaks in this entry.

6 Fit of model and data ⓘ

6.1 Protein, DNA and RNA chains ⓘ

In the following table, the column labelled ‘#RSRZ> 2’ contains the number (and percentage) of RSRZ outliers, followed by percent RSRZ outliers for the chain as percentile scores relative to all X-ray entries and entries of similar resolution. The OWAB column contains the minimum, median, 95th percentile and maximum values of the occupancy-weighted average B-factor per residue. The column labelled ‘Q< 0.9’ lists the number of (and percentage) of residues with an average occupancy less than 0.9.

Mol	Chain	Analysed	<RSRZ>	#RSRZ>2	OWAB(Å ²)	Q<0.9
1	A	334/356 (93%)	0.13	19 (5%) 27 22	13, 22, 53, 89	0
2	B	20/20 (100%)	-0.15	1 (5%) 32 27	16, 20, 37, 66	0
All	All	354/376 (94%)	0.12	20 (5%) 28 22	13, 22, 53, 89	0

All (20) RSRZ outliers are listed below:

Mol	Chain	Res	Type	RSRZ
1	A	318	PHE	8.4
1	A	14	SER	4.2
1	A	16	LYS	3.6
1	A	321	PRO	3.4
1	A	319	LYS	3.2
1	A	17	GLU	3.2
1	A	15	VAL	3.1
2	B	624	ASP	3.0
1	A	317	LYS	2.9
1	A	278	THR	2.8
1	A	20	ALA	2.8
1	A	244	ILE	2.4
1	A	286	ASN	2.4
1	A	19	LEU	2.3
1	A	185	PHE	2.3
1	A	320	GLY	2.3
1	A	224	LEU	2.3
1	A	315	ILE	2.1
1	A	242	GLN	2.1
1	A	335	ILE	2.0

6.2 Non-standard residues in protein, DNA, RNA chains [i](#)

In the following table, the Atoms column lists the number of modelled atoms in the group and the number defined in the chemical component dictionary. LLDF column lists the quality of electron density of the group with respect to its neighbouring residues in protein, DNA or RNA chains. The B-factors column lists the minimum, median, 95th percentile and maximum values of B factors of atoms in the group. The column labelled 'Q< 0.9' lists the number of atoms with occupancy less than 0.9.

Mol	Type	Chain	Res	Atoms	RSCC	RSR	LLDF	B-factors(Å ²)	Q<0.9
1	SEP	A	338	10/11	0.95	0.10	-	19,25,37,45	0
1	TPO	A	197	11/12	0.98	0.07	-	13,17,20,20	0
1	SEP	A	139	10/11	0.93	0.12	-	14,18,95,110	0

6.3 Carbohydrates [i](#)

There are no carbohydrates in this entry.

6.4 Ligands [i](#)

In the following table, the Atoms column lists the number of modelled atoms in the group and the number defined in the chemical component dictionary. LLDF column lists the quality of electron density of the group with respect to its neighbouring residues in protein, DNA or RNA chains. The B-factors column lists the minimum, median, 95th percentile and maximum values of B factors of atoms in the group. The column labelled 'Q< 0.9' lists the number of atoms with occupancy less than 0.9.

Mol	Type	Chain	Res	Atoms	RSCC	RSR	LLDF	B-factors(Å ²)	Q<0.9
4	ANP	A	403	31/31	0.96	0.09	-0.99	12,20,42,54	0
3	CA	A	402	1/1	0.99	0.10	-	16,16,16,16	0
3	CA	A	401	1/1	0.97	0.08	-	22,22,22,22	0

6.5 Other polymers [i](#)

There are no such residues in this entry.