



# Full wwPDB X-ray Structure Validation Report ⓘ

Feb 19, 2016 – 08:44 PM GMT

PDB ID : 4YRM  
Title : Crystal structure of T. cruzi Histidyl-tRNA synthetase in complex with 3-methoxypyridine (Chem 443)  
Authors : Koh, C.-Y.; Hol, W.G.J.  
Deposited on : 2015-03-15  
Resolution : 2.30 Å(reported)

This is a Full wwPDB X-ray Structure Validation Report for a publicly released PDB entry.  
We welcome your comments at [validation@mail.wwpdb.org](mailto:validation@mail.wwpdb.org)  
A user guide is available at  
<http://wwpdb.org/validation/2016/XrayValidationReportHelp>  
with specific help available everywhere you see the ⓘ symbol.

---

The following versions of software and data (see [references ⓘ](#)) were used in the production of this report:

MolProbity : 4.02b-467  
Mogul : 1.7.1 (RC1), CSD as537be (2016)  
Xtriage (Phenix) : 1.9-1692  
EDS : rb-20026982  
Percentile statistics : 20151230.v01 (using entries in the PDB archive December 30th 2015)  
Refmac : 5.8.0135  
CCP4 : 6.5.0  
Ideal geometry (proteins) : Engh & Huber (2001)  
Ideal geometry (DNA, RNA) : Parkinson et al. (1996)  
Validation Pipeline (wwPDB-VP) : rb-20026982

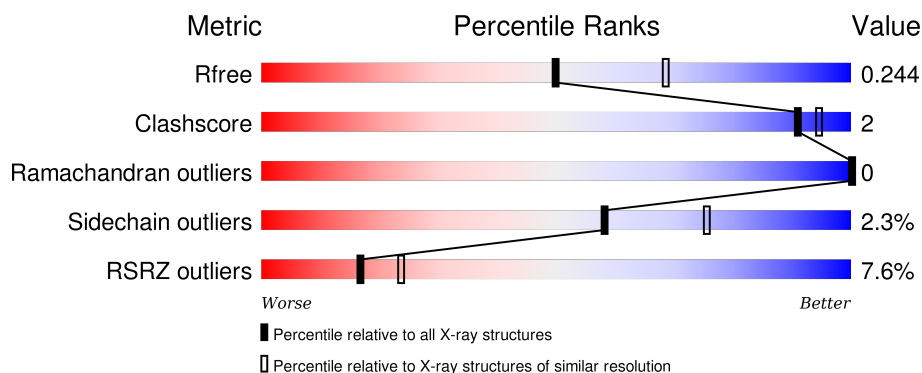
# 1 Overall quality at a glance

The following experimental techniques were used to determine the structure:

## *X-RAY DIFFRACTION*

The reported resolution of this entry is 2.30 Å.

Percentile scores (ranging between 0-100) for global validation metrics of the entry are shown in the following graphic. The table shows the number of entries on which the scores are based.



Metric	Whole archive (#Entries)	Similar resolution (#Entries, resolution range(Å))
$R_{free}$	91344	3852 (2.30-2.30)
Clashscore	102246	4452 (2.30-2.30)
Ramachandran outliers	100387	4410 (2.30-2.30)
Sidechain outliers	100360	4409 (2.30-2.30)
RSRZ outliers	91569	3857 (2.30-2.30)

The table below summarises the geometric issues observed across the polymeric chains and their fit to the electron density. The red, orange, yellow and green segments on the lower bar indicate the fraction of residues that contain outliers for  $\geq 3$ , 2, 1 and 0 types of geometric quality criteria. A grey segment represents the fraction of residues that are not modelled. The numeric value for each fraction is indicated below the corresponding segment, with a dot representing fractions  $\leq 5\%$ . The upper red bar (where present) indicates the fraction of residues that have poor fit to the electron density. The numeric value is given above the bar.

Mol	Chain	Length	Quality of chain
1	A	456	<div> <div>6%</div> <div>84%</div> <div>6%</div> <div>10%</div> </div>
1	B	456	<div> <div>7%</div> <div>85%</div> <div>6%</div> <div>9%</div> </div>

The following table lists non-polymeric compounds, carbohydrate monomers and non-standard residues in protein, DNA, RNA chains that are outliers for geometric or electron-density-fit criteria:

Mol	Type	Chain	Res	Chirality	Geometry	Clashes	Electron density
4	SO4	A	504	-	-	-	X
4	SO4	B	503	-	-	-	X

## 2 Entry composition

There are 7 unique types of molecules in this entry. The entry contains 6766 atoms, of which 0 are hydrogens and 0 are deuteriums.

In the tables below, the ZeroOcc column contains the number of atoms modelled with zero occupancy, the AltConf column contains the number of residues with at least one atom in alternate conformation and the Trace column contains the number of residues modelled with at most 2 atoms.

- Molecule 1 is a protein called Histidyl-tRNA synthetase.

Mol	Chain	Residues	Atoms					ZeroOcc	AltConf	Trace
1	A	412	Total	C	N	O	S	0	2	0
			3194	2041	552	582	19			
1	B	414	Total	C	N	O	S	0	2	0
			3207	2047	554	587	19			

There are 44 discrepancies between the modelled and reference sequences:

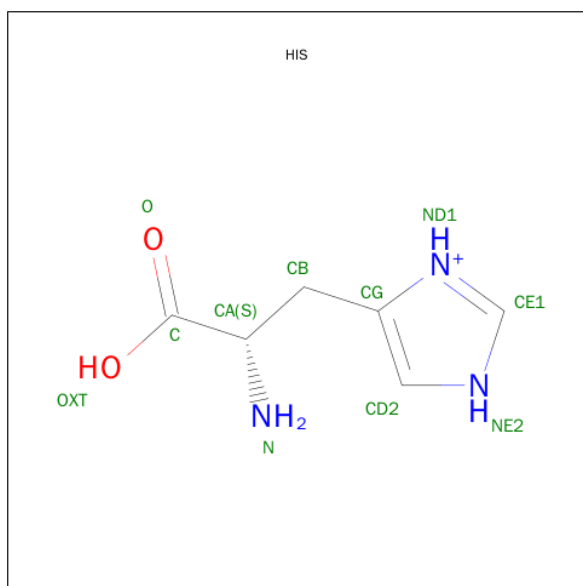
Chain	Residue	Modelled	Actual	Comment	Reference
A	-21	MET	-	initiating methionine	UNP Q4DA54
A	-20	ALA	-	expression tag	UNP Q4DA54
A	-19	HIS	-	expression tag	UNP Q4DA54
A	-18	HIS	-	expression tag	UNP Q4DA54
A	-17	HIS	-	expression tag	UNP Q4DA54
A	-16	HIS	-	expression tag	UNP Q4DA54
A	-15	HIS	-	expression tag	UNP Q4DA54
A	-14	HIS	-	expression tag	UNP Q4DA54
A	-13	MET	-	expression tag	UNP Q4DA54
A	-12	GLY	-	expression tag	UNP Q4DA54
A	-11	THR	-	expression tag	UNP Q4DA54
A	-10	LEU	-	expression tag	UNP Q4DA54
A	-9	GLU	-	expression tag	UNP Q4DA54
A	-8	ALA	-	expression tag	UNP Q4DA54
A	-7	GLN	-	expression tag	UNP Q4DA54
A	-6	THR	-	expression tag	UNP Q4DA54
A	-5	GLN	-	expression tag	UNP Q4DA54
A	-4	GLY	-	expression tag	UNP Q4DA54
A	-3	PRO	-	expression tag	UNP Q4DA54
A	-2	GLY	-	expression tag	UNP Q4DA54
A	-1	SER	-	expression tag	UNP Q4DA54
A	0	MET	-	expression tag	UNP Q4DA54
B	-21	MET	-	initiating methionine	UNP Q4DA54
B	-20	ALA	-	expression tag	UNP Q4DA54
B	-19	HIS	-	expression tag	UNP Q4DA54

*Continued on next page...*

Continued from previous page...

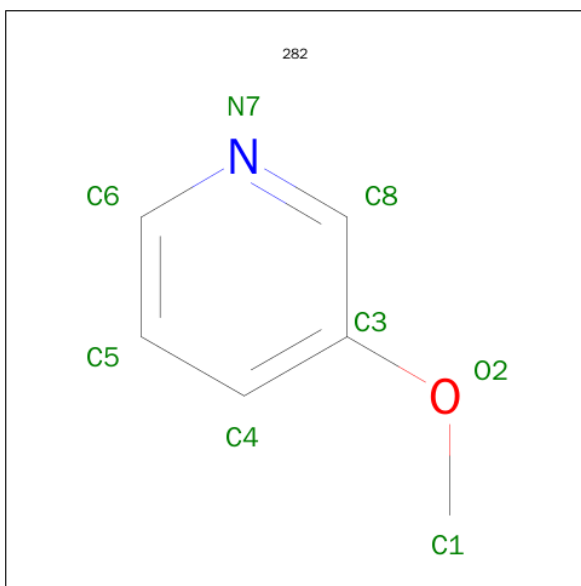
Chain	Residue	Modelled	Actual	Comment	Reference
B	-18	HIS	-	expression tag	UNP Q4DA54
B	-17	HIS	-	expression tag	UNP Q4DA54
B	-16	HIS	-	expression tag	UNP Q4DA54
B	-15	HIS	-	expression tag	UNP Q4DA54
B	-14	HIS	-	expression tag	UNP Q4DA54
B	-13	MET	-	expression tag	UNP Q4DA54
B	-12	GLY	-	expression tag	UNP Q4DA54
B	-11	THR	-	expression tag	UNP Q4DA54
B	-10	LEU	-	expression tag	UNP Q4DA54
B	-9	GLU	-	expression tag	UNP Q4DA54
B	-8	ALA	-	expression tag	UNP Q4DA54
B	-7	GLN	-	expression tag	UNP Q4DA54
B	-6	THR	-	expression tag	UNP Q4DA54
B	-5	GLN	-	expression tag	UNP Q4DA54
B	-4	GLY	-	expression tag	UNP Q4DA54
B	-3	PRO	-	expression tag	UNP Q4DA54
B	-2	GLY	-	expression tag	UNP Q4DA54
B	-1	SER	-	expression tag	UNP Q4DA54
B	0	MET	-	expression tag	UNP Q4DA54

- Molecule 2 is HISTIDINE (three-letter code: HIS) (formula: C<sub>6</sub>H<sub>10</sub>N<sub>3</sub>O<sub>2</sub>).



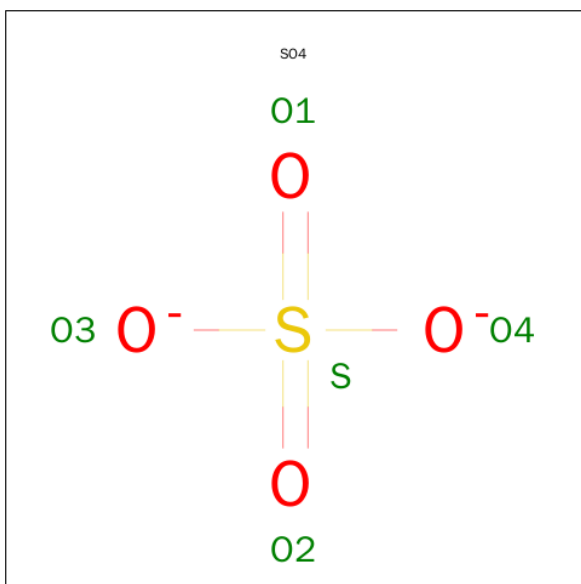
Mol	Chain	Residues	Atoms				ZeroOcc	AltConf
2	A	1	Total	C	N	O	0	0
			11	6	3	2		
2	B	1	Total	C	N	O	0	0
			11	6	3	2		

- Molecule 3 is 3-methoxypyridine (three-letter code: 282) (formula: C<sub>6</sub>H<sub>7</sub>NO).



Mol	Chain	Residues	Atoms				ZeroOcc	AltConf
3	A	1	Total	C	N	O	0	1
			16	12	2	2		
3	B	1	Total	C	N	O	0	1
			16	12	2	2		

- Molecule 4 is SULFATE ION (three-letter code: SO<sub>4</sub>) (formula: O<sub>4</sub>S).



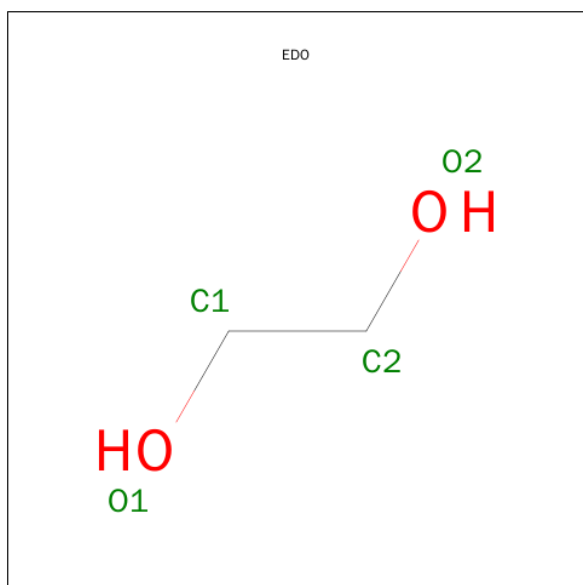
Mol	Chain	Residues	Atoms			ZeroOcc	AltConf
4	A	1	Total	O	S	0	0
			5	4	1		

*Continued on next page...*

Continued from previous page...

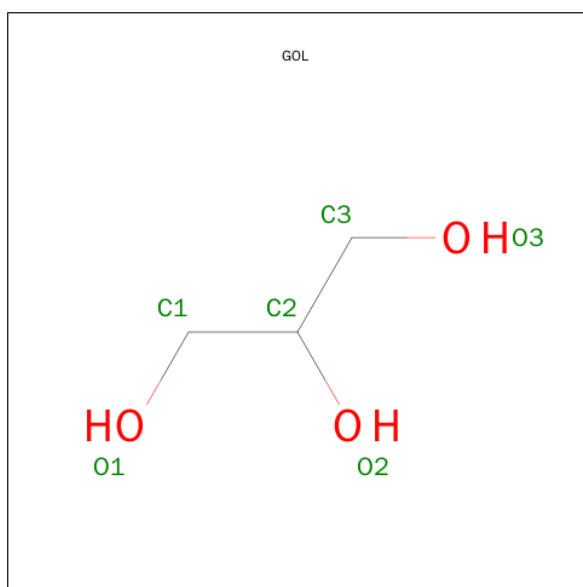
Mol	Chain	Residues	Atoms			ZeroOcc	AltConf
4	A	1	Total	O	S	0	0
			5	4	1		
4	B	1	Total	O	S	0	0
			5	4	1		

- Molecule 5 is 1,2-ETHANEDIOL (three-letter code: EDO) (formula:  $C_2H_6O_2$ ).



Mol	Chain	Residues	Atoms			ZeroOcc	AltConf
5	A	1	Total	C	O	0	0
			4	2	2		
5	B	1	Total	C	O	0	0
			4	2	2		

- Molecule 6 is GLYCEROL (three-letter code: GOL) (formula:  $C_3H_8O_3$ ).



Mol	Chain	Residues	Atoms			ZeroOcc	AltConf
6	A	1	Total	C	O	0	0
			6	3	3		
6	B	1	Total	C	O	0	0
			6	3	3		

- Molecule 7 is water.


Mol	Chain	Residues	Atoms		ZeroOcc	AltConf
7	A	136	Total	O	0	0
			136	136		
7	B	140	Total	O	0	0
			140	140		

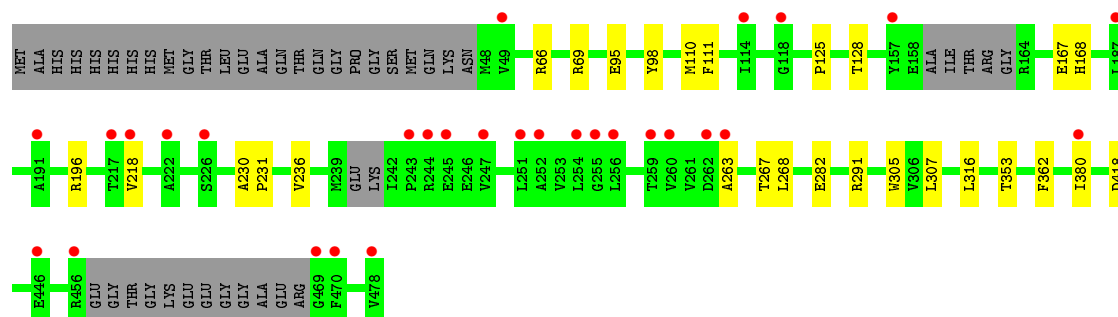


### 3 Residue-property plots [i](#)


These plots are drawn for all protein, RNA and DNA chains in the entry. The first graphic for a chain summarises the proportions of errors displayed in the second graphic. The second graphic shows the sequence view annotated by issues in geometry and electron density. Residues are color-coded according to the number of geometric quality criteria for which they contain at least one outlier: green = 0, yellow = 1, orange = 2 and red = 3 or more. A red dot above a residue indicates a poor fit to the electron density ( $\text{RSRZ} > 2$ ). Stretches of 2 or more consecutive residues without any outlier are shown as a green connector. Residues present in the sample, but not in the model, are shown in grey.

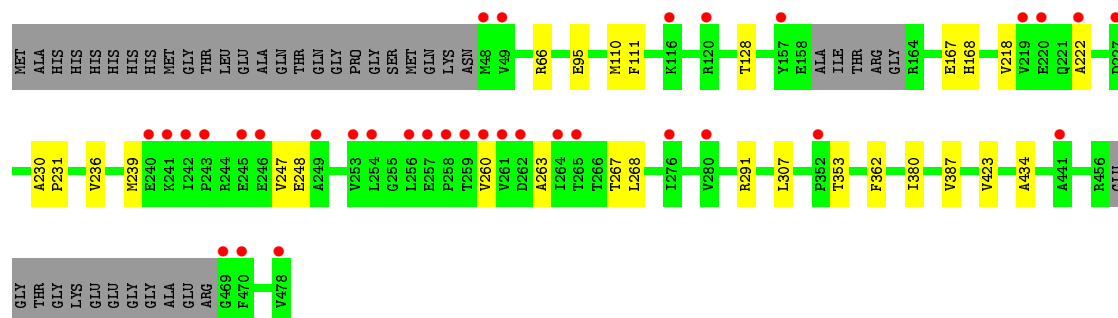
#### • Molecule 1: Histidyl-tRNA synthetase

Chain A: 



#### • Molecule 1: Histidyl-tRNA synthetase

Chain B: 



## 4 Data and refinement statistics

Property	Value	Source
Space group	C 1 2 1	Depositor
Cell constants a, b, c, $\alpha$ , $\beta$ , $\gamma$	90.13Å 119.46Å 94.55Å 90.00° 91.03° 90.00°	Depositor
Resolution (Å)	29.87 – 2.30 29.13 – 2.30	Depositor EDS
% Data completeness (in resolution range)	99.1 (29.87-2.30) 99.1 (29.13-2.30)	Depositor EDS
$R_{merge}$	0.07	Depositor
$R_{sym}$	(Not available)	Depositor
$\langle I/\sigma(I) \rangle$ <sup>1</sup>	2.46 (at 2.31Å)	Xtriage
Refinement program	REFMAC	Depositor
R, $R_{free}$	0.214 , 0.242 0.217 , 0.244	Depositor DCC
$R_{free}$ test set	2256 reflections (5.40%)	DCC
Wilson B-factor (Å <sup>2</sup> )	33.2	Xtriage
Anisotropy	0.365	Xtriage
Bulk solvent $k_{sol}$ (e/Å <sup>3</sup> ), $B_{sol}$ (Å <sup>2</sup> )	0.33 , 38.4	EDS
Estimated twinning fraction	0.024 for -h,-k,l	Xtriage
L-test for twinning <sup>2</sup>	$\langle  L  \rangle = 0.50$ , $\langle L^2 \rangle = 0.33$	Xtriage
Outliers	2 of 44036 reflections (0.005%)	Xtriage
$F_o, F_c$ correlation	0.96	EDS
Total number of atoms	6766	wwPDB-VP
Average B, all atoms (Å <sup>2</sup> )	45.0	wwPDB-VP

Xtriage's analysis on translational NCS is as follows: *The analyses of the Patterson function reveals a significant off-origin peak that is 86.41 % of the origin peak, indicating pseudo translational symmetry. The chance of finding a peak of this or larger height randomly in a structure without pseudo translational symmetry is equal to 9.4575e-08. The detected translational NCS is most likely also responsible for the elevated intensity ratio.*

<sup>1</sup> Intensities estimated from amplitudes.

<sup>2</sup> Theoretical values of  $\langle |L| \rangle$ ,  $\langle L^2 \rangle$  for acentric reflections are 0.5, 0.375 respectively for untwinned datasets, and 0.333, 0.2 for perfectly twinned datasets.

## 5 Model quality

### 5.1 Standard geometry

Bond lengths and bond angles in the following residue types are not validated in this section: GOL, 282, SO4, EDO

The Z score for a bond length (or angle) is the number of standard deviations the observed value is removed from the expected value. A bond length (or angle) with  $|Z| > 5$  is considered an outlier worth inspection. RMSZ is the root-mean-square of all Z scores of the bond lengths (or angles).

Mol	Chain	Bond lengths		Bond angles	
		RMSZ	$\# Z  > 5$	RMSZ	$\# Z  > 5$
1	A	0.39	0/3266	0.59	0/4428
1	B	0.39	0/3280	0.59	0/4449
All	All	0.39	0/6546	0.59	0/8877

There are no bond length outliers.

There are no bond angle outliers.

There are no chirality outliers.

There are no planarity outliers.

### 5.2 Too-close contacts

In the following table, the Non-H and H(model) columns list the number of non-hydrogen atoms and hydrogen atoms in the chain respectively. The H(added) column lists the number of hydrogen atoms added and optimized by MolProbity. The Clashes column lists the number of clashes within the asymmetric unit, whereas Symm-Clashes lists symmetry related clashes.

Mol	Chain	Non-H	H(model)	H(added)	Clashes	Symm-Clashes
1	A	3194	0	3146	15	0
1	B	3207	0	3145	12	0
2	A	11	0	6	2	0
2	B	11	0	6	1	0
3	A	16	0	14	0	0
3	B	16	0	14	0	0
4	A	10	0	0	1	0
4	B	5	0	0	0	0
5	A	4	0	6	0	0
5	B	4	0	6	0	0
6	A	6	0	8	3	0

*Continued on next page...*

*Continued from previous page...*

Mol	Chain	Non-H	H(model)	H(added)	Clashes	Symm-Clashes
6	B	6	0	8	0	0
7	A	136	0	0	2	0
7	B	140	0	0	1	0
All	All	6766	0	6359	28	0

The all-atom clashscore is defined as the number of clashes found per 1000 atoms (including hydrogen atoms). The all-atom clashscore for this structure is 2.

All (28) close contacts within the same asymmetric unit are listed below, sorted by their clash magnitude.

Atom-1	Atom-2	Interatomic distance (Å)	Clash overlap (Å)
4:A:503:SO4:S	7:A:601:HOH:O	2.52	0.67
1:A:128:THR:HG1	2:A:501:HIS:N	1.98	0.62
1:A:305:TRP:HE1	6:A:506:GOL:H2	1.64	0.60
1:A:218:VAL:HG21	1:A:267:THR:HG21	1.84	0.59
1:B:218:VAL:HG21	1:B:267:THR:HG21	1.85	0.58
1:A:236:VAL:HG13	1:A:268:LEU:HD11	1.88	0.54
1:B:236:VAL:HG13	1:B:268:LEU:HD11	1.90	0.52
1:B:222:ALA:HB1	1:B:260:VAL:HG22	1.93	0.50
1:B:128:THR:HG1	2:B:501:HIS:N	2.09	0.50
1:A:230:ALA:HB3	1:A:231:PRO:HD3	1.92	0.50
1:B:230:ALA:HB3	1:B:231:PRO:HD3	1.93	0.49
1:A:66:ARG:NE	1:A:380:ILE:O	2.46	0.49
1:B:423:VAL:HG12	7:B:711:HOH:O	2.11	0.49
1:B:66:ARG:NE	1:B:380:ILE:O	2.46	0.48
1:B:263:ALA:O	1:B:267:THR:HG23	2.13	0.48
1:A:305:TRP:HE1	6:A:506:GOL:C2	2.27	0.47
1:A:263:ALA:O	1:A:267:THR:HG23	2.13	0.47
1:A:316:LEU:CD1	2:A:501:HIS:HA	2.45	0.46
1:A:95:GLU:HG3	1:A:110:MET:HE3	1.98	0.46
1:A:418:ASP:HB2	7:A:712:HOH:O	2.16	0.44
1:A:196:ARG:HE	6:A:506:GOL:C3	2.31	0.43
1:A:236:VAL:CG1	1:A:268:LEU:HD11	2.48	0.42
1:B:239:MET:SD	1:B:247:VAL:HG11	2.59	0.42
1:A:282:GLU:OE2	1:A:291:ARG:NH1	2.50	0.42
1:B:95:GLU:HG3	1:B:110:MET:HE3	2.02	0.41
1:B:236:VAL:CG1	1:B:268:LEU:HD11	2.50	0.41
1:A:98:TYR:CE1	1:A:125:PRO:HD2	2.56	0.41
1:B:387:VAL:HG23	1:B:434:ALA:HB2	2.02	0.40

There are no symmetry-related clashes.

## 5.3 Torsion angles

### 5.3.1 Protein backbone

In the following table, the Percentiles column shows the percent Ramachandran outliers of the chain as a percentile score with respect to all X-ray entries followed by that with respect to entries of similar resolution.

The Analysed column shows the number of residues for which the backbone conformation was analysed, and the total number of residues.

Mol	Chain	Analysed	Favoured	Allowed	Outliers	Percentiles	
1	A	406/456 (89%)	400 (98%)	6 (2%)	0	100	100
1	B	410/456 (90%)	404 (98%)	6 (2%)	0	100	100
All	All	816/912 (90%)	804 (98%)	12 (2%)	0	100	100

There are no Ramachandran outliers to report.

### 5.3.2 Protein sidechains

In the following table, the Percentiles column shows the percent sidechain outliers of the chain as a percentile score with respect to all X-ray entries followed by that with respect to entries of similar resolution.

The Analysed column shows the number of residues for which the sidechain conformation was analysed, and the total number of residues.

Mol	Chain	Analysed	Rotameric	Outliers	Percentiles	
1	A	332/380 (87%)	325 (98%)	7 (2%)	61	78
1	B	332/380 (87%)	324 (98%)	8 (2%)	57	74
All	All	664/760 (87%)	649 (98%)	15 (2%)	58	75

All (15) residues with a non-rotameric sidechain are listed below:

Mol	Chain	Res	Type
1	A	69	ARG
1	A	111	PHE
1	A	167	GLU
1	A	168	HIS
1	A	307	LEU
1	A	353	THR
1	A	362	PHE
1	B	111	PHE

*Continued on next page...*

*Continued from previous page...*

Mol	Chain	Res	Type
1	B	167	GLU
1	B	168	HIS
1	B	248	GLU
1	B	291	ARG
1	B	307	LEU
1	B	353	THR
1	B	362	PHE

Some sidechains can be flipped to improve hydrogen bonding and reduce clashes. All (2) such sidechains are listed below:

Mol	Chain	Res	Type
1	A	112	ASN
1	B	112	ASN

### 5.3.3 RNA [i](#)

There are no RNA molecules in this entry.

## 5.4 Non-standard residues in protein, DNA, RNA chains [i](#)

There are no non-standard protein/DNA/RNA residues in this entry.

## 5.5 Carbohydrates [i](#)

There are no carbohydrates in this entry.

## 5.6 Ligand geometry [i](#)

13 ligands are modelled in this entry.

In the following table, the Counts columns list the number of bonds (or angles) for which Mogul statistics could be retrieved, the number of bonds (or angles) that are observed in the model and the number of bonds (or angles) that are defined in the chemical component dictionary. The Link column lists molecule types, if any, to which the group is linked. The Z score for a bond length (or angle) is the number of standard deviations the observed value is removed from the expected value. A bond length (or angle) with  $|Z| > 2$  is considered an outlier worth inspection. RMSZ is the root-mean-square of all Z scores of the bond lengths (or angles).

Mol	Type	Chain	Res	Link	Bond lengths			Bond angles		
					Counts	RMSZ	# Z  > 2	Counts	RMSZ	# Z  > 2
2	HIS	A	501	-	4,11,11	0.49	0	3,14,14	1.23	0
3	282	A	502[A]	-	8,8,8	0.16	0	9,9,9	0.42	0
3	282	A	502[B]	-	8,8,8	0.17	0	9,9,9	0.42	0
4	SO4	A	503	-	4,4,4	0.52	0	6,6,6	0.41	0
4	SO4	A	504	-	4,4,4	0.39	0	6,6,6	0.32	0
5	EDO	A	505	-	3,3,3	0.36	0	2,2,2	0.68	0
6	GOL	A	506	-	5,5,5	0.32	0	5,5,5	0.67	0
2	HIS	B	501	-	4,11,11	0.47	0	3,14,14	1.17	0
3	282	B	502[A]	-	8,8,8	0.14	0	9,9,9	0.46	0
3	282	B	502[B]	-	8,8,8	0.16	0	9,9,9	0.46	0
4	SO4	B	503	-	4,4,4	0.41	0	6,6,6	0.13	0
5	EDO	B	504	-	3,3,3	0.40	0	2,2,2	0.57	0
6	GOL	B	505	-	5,5,5	0.24	0	5,5,5	0.42	0

In the following table, the Chirals column lists the number of chiral outliers, the number of chiral centers analysed, the number of these observed in the model and the number defined in the chemical component dictionary. Similar counts are reported in the Torsion and Rings columns. '-' means no outliers of that kind were identified.

Mol	Type	Chain	Res	Link	Chirals	Torsions	Rings
2	HIS	A	501	-	-	0/4/8/8	0/1/1/1
3	282	A	502[A]	-	-	0/2/2/2	0/1/1/1
3	282	A	502[B]	-	-	0/2/2/2	0/1/1/1
4	SO4	A	503	-	-	0/0/0/0	0/0/0/0
4	SO4	A	504	-	-	0/0/0/0	0/0/0/0
5	EDO	A	505	-	-	0/1/1/1	0/0/0/0
6	GOL	A	506	-	-	0/4/4/4	0/0/0/0
2	HIS	B	501	-	-	0/4/8/8	0/1/1/1
3	282	B	502[A]	-	-	0/2/2/2	0/1/1/1
3	282	B	502[B]	-	-	0/2/2/2	0/1/1/1
4	SO4	B	503	-	-	0/0/0/0	0/0/0/0
5	EDO	B	504	-	-	0/1/1/1	0/0/0/0
6	GOL	B	505	-	-	0/4/4/4	0/0/0/0

There are no bond length outliers.

There are no bond angle outliers.

There are no chirality outliers.

There are no torsion outliers.

There are no ring outliers.

4 monomers are involved in 7 short contacts:

Mol	Chain	Res	Type	Clashes	Symm-Clashes
2	A	501	HIS	2	0
4	A	503	SO4	1	0
6	A	506	GOL	3	0
2	B	501	HIS	1	0

## 5.7 Other polymers [i](#)

There are no such residues in this entry.

## 5.8 Polymer linkage issues [i](#)

There are no chain breaks in this entry.



## 6 Fit of model and data ⓘ

### 6.1 Protein, DNA and RNA chains ⓘ

In the following table, the column labelled ‘#RSRZ> 2’ contains the number (and percentage) of RSRZ outliers, followed by percent RSRZ outliers for the chain as percentile scores relative to all X-ray entries and entries of similar resolution. The OWAB column contains the minimum, median, 95<sup>th</sup> percentile and maximum values of the occupancy-weighted average B-factor per residue. The column labelled ‘Q< 0.9’ lists the number of (and percentage) of residues with an average occupancy less than 0.9.

Mol	Chain	Analysed	<RSRZ>	#RSRZ>2	OWAB(Å <sup>2</sup> )	Q<0.9
1	A	412/456 (90%)	0.32	29 (7%) 19 27	20, 40, 90, 105	0
1	B	414/456 (90%)	0.37	34 (8%) 14 20	19, 41, 96, 122	0
All	All	826/912 (90%)	0.34	63 (7%) 17 24	19, 41, 93, 122	0

All (63) RSRZ outliers are listed below:

Mol	Chain	Res	Type	RSRZ
1	B	242	ILE	5.9
1	A	243	PRO	5.6
1	B	249	ALA	5.5
1	B	261	VAL	5.0
1	A	254	LEU	4.7
1	A	252	ALA	4.2
1	A	251	LEU	4.2
1	B	280	VAL	4.1
1	B	256	LEU	4.1
1	B	227	ASP	4.1
1	B	276	ILE	4.0
1	A	245	GLU	3.8
1	B	219	VAL	3.7
1	A	256	LEU	3.7
1	B	258	PRO	3.6
1	A	118	GLY	3.5
1	A	226	SER	3.5
1	B	241	LYS	3.5
1	A	259	THR	3.4
1	A	262	ASP	3.4
1	A	244	ARG	3.4
1	B	243	PRO	3.3
1	B	245	GLU	3.2
1	B	157	TYR	3.1

*Continued on next page...*

*Continued from previous page...*

Mol	Chain	Res	Type	RSRZ
1	B	240	GLU	3.1
1	B	259	THR	3.1
1	B	254	LEU	3.0
1	B	469	GLY	3.0
1	B	262	ASP	2.9
1	B	222	ALA	2.9
1	B	116	LYS	2.9
1	B	352	PRO	2.9
1	B	246	GLU	2.9
1	A	470	PHE	2.8
1	A	446	GLU	2.8
1	B	260	VAL	2.7
1	A	222	ALA	2.7
1	A	247	VAL	2.7
1	B	220	GLU	2.7
1	A	456	ARG	2.6
1	A	478	VAL	2.6
1	B	264	ILE	2.6
1	A	255	GLY	2.6
1	A	260	VAL	2.6
1	B	441	ALA	2.6
1	A	469	GLY	2.6
1	B	257	GLU	2.6
1	B	470	PHE	2.5
1	A	263	ALA	2.5
1	A	49	VAL	2.4
1	B	48	MET	2.4
1	B	49	VAL	2.4
1	B	120	ARG	2.4
1	A	187	LEU	2.3
1	A	191	ALA	2.2
1	A	380	ILE	2.2
1	B	265	THR	2.1
1	B	478	VAL	2.1
1	A	217	THR	2.1
1	A	218	VAL	2.1
1	B	253	VAL	2.1
1	A	157	TYR	2.1
1	A	114	ILE	2.0

## 6.2 Non-standard residues in protein, DNA, RNA chains [i](#)

There are no non-standard protein/DNA/RNA residues in this entry.

## 6.3 Carbohydrates [i](#)

There are no carbohydrates in this entry.

## 6.4 Ligands [i](#)

In the following table, the Atoms column lists the number of modelled atoms in the group and the number defined in the chemical component dictionary. LLDF column lists the quality of electron density of the group with respect to its neighbouring residues in protein, DNA or RNA chains. The B-factors column lists the minimum, median, 95<sup>th</sup> percentile and maximum values of B factors of atoms in the group. The column labelled 'Q< 0.9' lists the number of atoms with occupancy less than 0.9.

Mol	Type	Chain	Res	Atoms	RSCC	RSR	LLDF	B-factors(Å <sup>2</sup> )	Q<0.9
4	SO4	B	503	5/5	0.91	0.24	2.43	74,78,81,83	0
4	SO4	A	504	5/5	0.88	0.23	2.03	79,87,89,90	0
3	282	A	502[A]	8/8	0.92	0.23	1.82	40,42,43,44	8
3	282	A	502[B]	8/8	0.92	0.23	1.82	44,46,46,47	8
3	282	B	502[A]	8/8	0.90	0.21	1.37	38,39,40,41	8
3	282	B	502[B]	8/8	0.90	0.21	1.37	41,43,43,44	8
6	GOL	A	506	6/6	0.80	0.19	0.91	43,48,51,52	0
6	GOL	B	505	6/6	0.90	0.17	0.91	50,54,54,57	0
2	HIS	A	501	11/11	0.97	0.18	0.81	22,23,24,24	0
2	HIS	B	501	11/11	0.96	0.18	0.45	21,22,25,26	0
5	EDO	B	504	4/4	0.85	0.17	-1.19	51,54,57,60	0
4	SO4	A	503	5/5	0.97	0.10	-1.46	43,46,51,52	0
5	EDO	A	505	4/4	0.88	0.12	-1.97	48,48,50,53	0

## 6.5 Other polymers [i](#)

There are no such residues in this entry.