



# Full wwPDB X-ray Structure Validation Report ⓘ

Feb 13, 2017 – 04:51 am GMT

PDB ID : 9API  
Title : THE S VARIANT OF HUMAN ALPHA1-ANTITRYPSIN, STRUCTURE AND IMPLICATIONS FOR FUNCTION AND METABOLISM  
Authors : Loebermann, H.; Tokuoka, R.; Deisenhofer, J.; Huber, R.  
Deposited on : 1988-09-08  
Resolution : 3.00 Å(reported)

This is a Full wwPDB X-ray Structure Validation Report for a publicly released PDB entry.

We welcome your comments at [validation@mail.wwpdb.org](mailto:validation@mail.wwpdb.org)

A user guide is available at

<http://wwpdb.org/validation/2016/XrayValidationReportHelp>

with specific help available everywhere you see the ⓘ symbol.

---

The following versions of software and data (see [references ⓘ](#)) were used in the production of this report:

MolProbity	:	4.02b-467
Mogul	:	1.7.2 (RC1), CSD as538be (2017)
Xtriage (Phenix)	:	NOT EXECUTED
EDS	:	NOT EXECUTED
Percentile statistics	:	20161228.v01 (using entries in the PDB archive December 28th 2016)
Ideal geometry (proteins)	:	Engh & Huber (2001)
Ideal geometry (DNA, RNA)	:	Parkinson et al. (1996)
Validation Pipeline (wwPDB-VP)	:	recalc28949

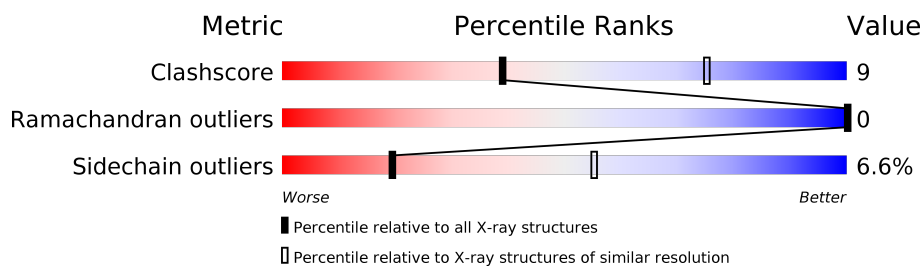
# 1 Overall quality at a glance

The following experimental techniques were used to determine the structure:

*X-RAY DIFFRACTION*

The reported resolution of this entry is 3.00 Å.

Percentile scores (ranging between 0-100) for global validation metrics of the entry are shown in the following graphic. The table shows the number of entries on which the scores are based.



Metric	Whole archive (#Entries)	Similar resolution (#Entries, resolution range(Å))
Clashscore	112137	2037 (3.00-3.00)
Ramachandran outliers	110173	1973 (3.00-3.00)
Sidechain outliers	110143	1976 (3.00-3.00)

The table below summarises the geometric issues observed across the polymeric chains and their fit to the electron density. The red, orange, yellow and green segments on the lower bar indicate the fraction of residues that contain outliers for  $\geq 3$ , 2, 1 and 0 types of geometric quality criteria. A grey segment represents the fraction of residues that are not modelled. The numeric value for each fraction is indicated below the corresponding segment, with a dot representing fractions  $\leq 5\%$ . The upper red bar (where present) indicates the fraction of residues that have poor fit to the electron density. The numeric value is given above the bar.

Note EDS was not executed.

Mol	Chain	Length	Quality of chain
1	A	347	
2	B	36	

The following table lists non-polymeric compounds, carbohydrate monomers and non-standard residues in protein, DNA, RNA chains that are outliers for geometric or electron-density-fit criteria:

Mol	Type	Chain	Res	Chirality	Geometry	Clashes	Electron density
3	NAG	A	501	-	-	X	-
3	NAG	A	502	-	-	X	-
3	MAN	A	503	X	-	X	-

*Continued on next page...*

*Continued from previous page...*

Mol	Type	Chain	Res	Chirality	Geometry	Clashes	Electron density
3	MAN	A	504	-	-	X	-
3	NAG	A	505	-	-	X	-
3	MAN	A	506	-	-	X	-
4	NAG	A	520	X	-	-	-

## 2 Entry composition

There are 5 unique types of molecules in this entry. The entry contains 3119 atoms, of which 0 are hydrogens and 0 are deuteriums.

In the tables below, the ZeroOcc column contains the number of atoms modelled with zero occupancy, the AltConf column contains the number of residues with at least one atom in alternate conformation and the Trace column contains the number of residues modelled with at most 2 atoms.

- Molecule 1 is a protein called ALPHA 1-ANTITRYPSIN.

Mol	Chain	Residues	Atoms					ZeroOcc	AltConf	Trace
1	A	339	Total	C	N	O	S	6	0	0
			2690	1726	441	515	8			

- Molecule 2 is a protein called ALPHA 1-ANTITRYPSIN.

Mol	Chain	Residues	Atoms					ZeroOcc	AltConf	Trace
2	B	36	Total	C	N	O	S	4	0	0
			291	193	46	50	2			

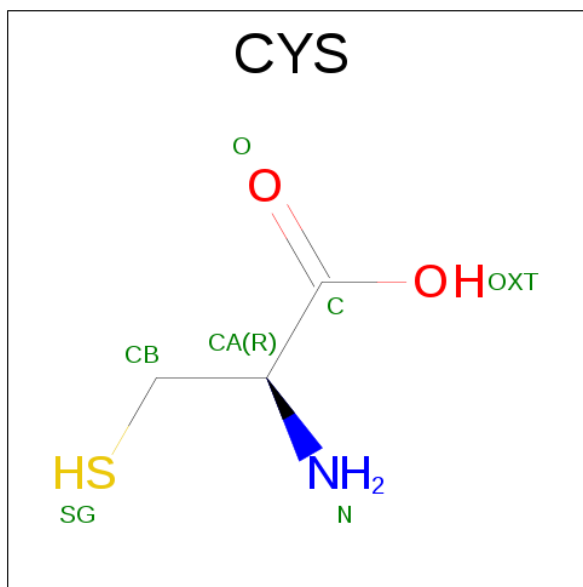
- Molecule 3 is a polymer of unknown type called SUGAR (6-MER).

Mol	Chain	Residues	Atoms				ZeroOcc	AltConf
3	A	6	Total	C	N	O	25	0
			75	42	3	30		

- Molecule 4 is a polymer of unknown type called SUGAR (2-MER).

Mol	Chain	Residues	Atoms				ZeroOcc	AltConf
4	A	2	Total	C	N	O	18	0
			28	16	2	10		
4	A	2	Total	C	N	O	5	0
			28	16	2	10		

- Molecule 5 is CYSTEINE (three-letter code: CYS) (formula: C<sub>3</sub>H<sub>7</sub>NO<sub>2</sub>S).

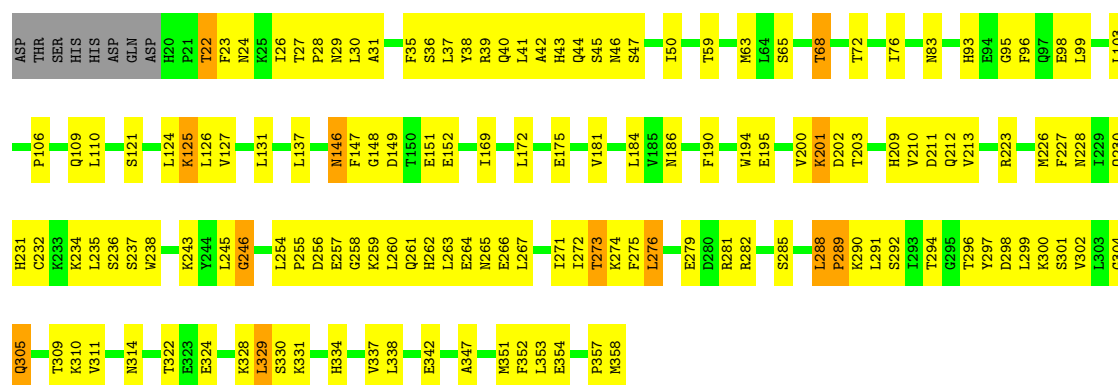


Mol	Chain	Residues	Atoms					ZeroOcc	AltConf
			Total	C	N	O	S		
5	A	1	7	3	1	2	1	0	0

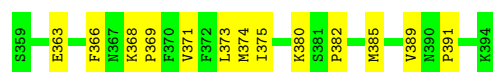


Note EDS was not executed.

Chain A:  56% 38% ..



Chain B:  64% 36%



## 4 Data and refinement statistics

Xtriage (Phenix) and EDS were not executed - this section is therefore incomplete.

Property	Value	Source
Space group	P 43 21 2	Depositor
Cell constants a, b, c, $\alpha$ , $\beta$ , $\gamma$	119.30Å 119.30Å 104.30Å 90.00° 90.00° 90.00°	Depositor
Resolution (Å)	(Not available) – 3.00	Depositor
% Data completeness (in resolution range)	(Not available) ((Not available)-3.00)	Depositor
$R_{merge}$	(Not available)	Depositor
$R_{sym}$	(Not available)	Depositor
Refinement program	EREF	Depositor
R, $R_{free}$	0.209 , (Not available)	Depositor
Estimated twinning fraction	No twinning to report.	Xtriage
Total number of atoms	3119	wwPDB-VP
Average B, all atoms (Å <sup>2</sup> )	20.0	wwPDB-VP

## 5 Model quality

### 5.1 Standard geometry

Bond lengths and bond angles in the following residue types are not validated in this section: NAG, MAN

The Z score for a bond length (or angle) is the number of standard deviations the observed value is removed from the expected value. A bond length (or angle) with  $|Z| > 5$  is considered an outlier worth inspection. RMSZ is the root-mean-square of all Z scores of the bond lengths (or angles).

Mol	Chain	Bond lengths		Bond angles	
		RMSZ	$\# Z  > 5$	RMSZ	$\# Z  > 5$
1	A	0.77	2/2744 (0.1%)	1.07	0/3707
2	B	0.67	0/299	0.98	0/402
All	All	0.76	2/3043 (0.1%)	1.06	0/4109

Chiral center outliers are detected by calculating the chiral volume of a chiral center and verifying if the center is modelled as a planar moiety or with the opposite hand. A planarity outlier is detected by checking planarity of atoms in a peptide group, atoms in a mainchain group or atoms of a sidechain that are expected to be planar.

Mol	Chain	#Chirality outliers	#Planarity outliers
1	A	0	12
3	A	1	0
4	A	1	0
All	All	2	12

All (2) bond length outliers are listed below:

Mol	Chain	Res	Type	Atoms	Z	Observed(Å)	Ideal(Å)
1	A	194	TRP	NE1-CE2	-7.43	1.27	1.37
1	A	238	TRP	NE1-CE2	-6.73	1.28	1.37

There are no bond angle outliers.

All (2) chirality outliers are listed below:

Mol	Chain	Res	Type	Atom
3	A	503	MAN	C1
4	A	520	NAG	C1

All (12) planarity outliers are listed below:

Mol	Chain	Res	Type	Group
1	A	106	PRO	Mainchain
1	A	127	VAL	Mainchain
1	A	203	THR	Mainchain
1	A	237	SER	Mainchain
1	A	243	LYS	Mainchain
1	A	246	GLY	Mainchain
1	A	289	PRO	Mainchain
1	A	290	LYS	Mainchain
1	A	296	THR	Mainchain
1	A	309	THR	Mainchain
1	A	329	LEU	Mainchain
1	A	83	ASN	Mainchain

## 5.2 Too-close contacts

In the following table, the Non-H and H(model) columns list the number of non-hydrogen atoms and hydrogen atoms in the chain respectively. The H(added) column lists the number of hydrogen atoms added and optimized by MolProbity. The Clashes column lists the number of clashes within the asymmetric unit, whereas Symm-Clashes lists symmetry related clashes.

Mol	Chain	Non-H	H(model)	H(added)	Clashes	Symm-Clashes
1	A	2690	0	2685	50	338
2	B	291	0	306	6	27
3	A	75	0	64	0	135
4	A	56	0	50	1	0
5	A	7	0	3	0	3
All	All	3119	0	3108	52	350

The all-atom clashscore is defined as the number of clashes found per 1000 atoms (including hydrogen atoms). The all-atom clashscore for this structure is 9.

All (52) close contacts within the same asymmetric unit are listed below, sorted by their clash magnitude.

Atom-1	Atom-2	Interatomic distance (Å)	Clash overlap (Å)
1:A:110:LEU:HD11	1:A:190:PHE:CE1	2.25	0.72
1:A:294:THR:HG22	1:A:337:VAL:HG22	1.72	0.71
1:A:331:LYS:HB2	1:A:354:GLU:HG2	1.76	0.68
1:A:226:MET:HG3	1:A:281:ARG:HB3	1.77	0.67
1:A:110:LEU:HD11	1:A:190:PHE:HE1	1.58	0.67
1:A:146:ASN:HD22	1:A:148:GLY:H	1.43	0.66
1:A:195:GLU:HG2	1:A:245:LEU:HD23	1.79	0.63

*Continued on next page...*

*Continued from previous page...*

Atom-1	Atom-2	Interatomic distance (Å)	Clash overlap (Å)
1:A:246:GLY:HA2	4:A:520:NAG:H83	1.82	0.60
1:A:201:LYS:H	1:A:201:LYS:HD2	1.69	0.58
1:A:126:LEU:HD13	1:A:131:LEU:HD13	1.89	0.55
1:A:330:SER:OG	1:A:354:GLU:HG3	2.08	0.54
1:A:65:SER:HA	1:A:68:THR:OG1	2.08	0.53
1:A:125:LYS:HE3	1:A:324:GLU:HG3	1.91	0.53
1:A:27:THR:O	1:A:30:LEU:HB2	2.09	0.52
1:A:292:SER:HA	1:A:338:LEU:O	2.11	0.51
2:B:373:LEU:HB3	2:B:385:MET:HG3	1.92	0.51
1:A:228:ASN:HD21	1:A:279:GLU:HA	1.77	0.49
1:A:314:ASN:O	1:A:358:MET:HE1	2.13	0.49
1:A:146:ASN:C	1:A:146:ASN:HD22	2.15	0.48
1:A:93:HIS:HB3	1:A:137:LEU:HD23	1.96	0.48
1:A:285:SER:HB3	2:B:363:GLU:HA	1.95	0.47
2:B:373:LEU:HD12	2:B:375:ILE:HG13	1.96	0.47
1:A:72:THR:HG22	1:A:310:LYS:HD3	1.95	0.47
1:A:146:ASN:ND2	1:A:148:GLY:H	2.12	0.46
1:A:172:LEU:HD21	1:A:352:PHE:HB2	1.97	0.45
1:A:26:ILE:HA	1:A:29:ASN:HD22	1.82	0.45
1:A:288:LEU:HB2	1:A:289:PRO:HD2	1.98	0.45
1:A:35:PHE:O	1:A:39:ARG:HG3	2.17	0.45
1:A:254:LEU:HB2	2:B:366:PHE:CE2	2.52	0.45
1:A:63:MET:HG3	1:A:184:LEU:HD11	1.97	0.45
1:A:22:THR:HB	1:A:95:GLY:HA2	1.98	0.44
1:A:31:ALA:HA	2:B:382:PRO:HG3	1.99	0.44
1:A:223:ARG:HB3	1:A:227:PHE:HZ	1.82	0.44
1:A:121:SER:HB3	1:A:147:PHE:HD2	1.81	0.44
1:A:131:LEU:HD12	1:A:131:LEU:HA	1.86	0.44
1:A:329:LEU:HD21	1:A:353:LEU:HD22	2.00	0.43
1:A:181:VAL:HG23	1:A:357:PRO:HD3	2.01	0.43
1:A:27:THR:HA	1:A:30:LEU:HD12	2.01	0.43
1:A:22:THR:OG1	1:A:98:GLU:HG3	2.19	0.43
1:A:175:GLU:O	1:A:331:LYS:HE2	2.19	0.43
1:A:59:THR:HG22	1:A:96:PHE:CE1	2.53	0.42
1:A:195:GLU:HG2	1:A:245:LEU:CD2	2.48	0.41
1:A:291:LEU:HD21	2:B:391:PRO:HB3	2.01	0.41
1:A:337:VAL:O	1:A:347:ALA:HA	2.20	0.41
1:A:99:LEU:O	1:A:103:LEU:HG	2.20	0.41
1:A:39:ARG:HH11	1:A:39:ARG:HD2	1.58	0.41
1:A:27:THR:HB	1:A:28:PRO:CD	2.51	0.41
1:A:352:PHE:CZ	1:A:354:GLU:HB3	2.55	0.41

*Continued on next page...*

*Continued from previous page...*

Atom-1	Atom-2	Interatomic distance (Å)	Clash overlap (Å)
1:A:124:LEU:HD11	1:A:322:THR:HG21	2.02	0.41
1:A:72:THR:O	1:A:76:ILE:HG13	2.21	0.41
1:A:299:LEU:HD23	1:A:299:LEU:HA	1.92	0.41
1:A:334:HIS:HB2	1:A:351:MET:SD	2.62	0.40

All (350) symmetry-related close contacts are listed below. The label for Atom-2 includes the symmetry operator and encoded unit-cell translations to be applied.

Atom-1	Atom-2	Interatomic distance (Å)	Clash overlap (Å)
1:A:272:ILE:O	3:A:504:MAN:O4[8_666]	0.12	2.08
1:A:276:LEU:N	3:A:504:MAN:C6[8_666]	0.30	1.90
1:A:272:ILE:CD1	3:A:502:NAG:N2[8_666]	0.41	1.79
1:A:39:ARG:NE	1:A:47:SER:N[8_666]	0.45	1.75
1:A:273:THR:CA	3:A:504:MAN:C3[8_666]	0.47	1.73
1:A:259:LYS:CE	2:B:368:LYS:CE[8_666]	0.47	1.73
1:A:211:ASP:CA	1:A:266:GLU:CG[8_666]	0.50	1.70
1:A:39:ARG:NH2	1:A:47:SER:OG[8_666]	0.51	1.69
1:A:255:PRO:CA	1:A:258:GLY:CA[8_666]	0.52	1.68
1:A:267:LEU:CD2	3:A:501:NAG:C5[8_666]	0.57	1.63
1:A:301:SER:N	1:A:301:SER:CA[8_666]	0.60	1.60
1:A:275:PHE:CD1	3:A:503:MAN:O2[8_666]	0.61	1.59
1:A:260:LEU:CA	1:A:260:LEU:CB[8_666]	0.63	1.57
1:A:274:LYS:CA	3:A:503:MAN:C6[8_666]	0.64	1.56
1:A:274:LYS:CA	3:A:503:MAN:O6[8_666]	0.65	1.55
1:A:256:ASP:O	1:A:256:ASP:O[8_666]	0.66	1.54
1:A:210:VAL:C	1:A:266:GLU:OE2[8_666]	0.70	1.50
1:A:256:ASP:N	1:A:257:GLU:C[8_666]	0.70	1.50
1:A:273:THR:O	3:A:504:MAN:O5[8_666]	0.79	1.41
1:A:263:LEU:O	3:A:501:NAG:C8[8_666]	0.82	1.38
1:A:39:ARG:CG	1:A:45:SER:C[8_666]	0.83	1.37
1:A:37:LEU:O	1:A:44:GLN:CA[8_666]	0.84	1.36
1:A:212:GLN:OE1	1:A:232:CYS:SG[8_666]	0.88	1.32
1:A:272:ILE:N	3:A:502:NAG:O3[8_666]	0.88	1.32
1:A:256:ASP:CB	1:A:257:GLU:CA[8_666]	0.89	1.31
1:A:267:LEU:CD2	3:A:501:NAG:C4[8_666]	0.94	1.26
1:A:273:THR:CA	3:A:504:MAN:O3[8_666]	0.95	1.25
2:B:380:LYS:CE	3:A:505:NAG:C4[8_666]	0.96	1.24
1:A:272:ILE:CG1	3:A:502:NAG:C7[8_666]	0.96	1.24
1:A:39:ARG:CB	1:A:45:SER:O[8_666]	0.97	1.23
1:A:260:LEU:C	1:A:260:LEU:CG[8_666]	0.98	1.22

*Continued on next page...*

*Continued from previous page...*

Atom-1	Atom-2	Interatomic distance (Å)	Clash overlap (Å)
1:A:41:LEU:CD1	1:A:43:HIS:ND1[8_666]	0.98	1.22
1:A:274:LYS:N	3:A:503:MAN:O6[8_666]	0.99	1.21
1:A:42:ALA:N	1:A:43:HIS:N[8_666]	0.99	1.21
1:A:275:PHE:CE2	3:A:502:NAG:O6[8_666]	1.00	1.20
1:A:149:ASP:CG	1:A:234:LYS:NZ[6_556]	1.00	1.20
1:A:272:ILE:CA	3:A:502:NAG:O3[8_666]	1.01	1.19
2:B:380:LYS:CD	3:A:505:NAG:O4[8_666]	1.02	1.18
1:A:256:ASP:N	1:A:258:GLY:N[8_666]	1.02	1.18
1:A:276:LEU:N	3:A:504:MAN:O6[8_666]	1.03	1.17
1:A:39:ARG:O	1:A:41:LEU:O[8_666]	1.03	1.17
1:A:256:ASP:CA	1:A:257:GLU:O[8_666]	1.04	1.16
1:A:40:GLN:CB	1:A:44:GLN:CD[8_666]	1.04	1.16
1:A:263:LEU:C	3:A:501:NAG:C8[8_666]	1.05	1.15
1:A:260:LEU:CG	1:A:261:GLN:N[8_666]	1.05	1.15
1:A:260:LEU:C	1:A:260:LEU:CB[8_666]	1.06	1.14
1:A:255:PRO:C	1:A:258:GLY:CA[8_666]	1.06	1.14
2:B:380:LYS:CD	3:A:505:NAG:C4[8_666]	1.07	1.13
1:A:211:ASP:N	1:A:266:GLU:CD[8_666]	1.07	1.13
1:A:266:GLU:N	3:A:501:NAG:O7[8_666]	1.08	1.12
1:A:256:ASP:N	1:A:257:GLU:O[8_666]	1.11	1.09
1:A:38:TYR:OH	1:A:261:GLN:NE2[8_666]	1.12	1.08
1:A:275:PHE:CZ	3:A:502:NAG:O6[8_666]	1.13	1.07
2:B:380:LYS:CE	3:A:505:NAG:O4[8_666]	1.14	1.06
1:A:273:THR:C	3:A:504:MAN:C3[8_666]	1.16	1.04
1:A:301:SER:N	1:A:301:SER:N[8_666]	1.16	1.04
1:A:212:GLN:OE1	1:A:232:CYS:CB[8_666]	1.17	1.03
1:A:275:PHE:C	3:A:504:MAN:O6[8_666]	1.18	1.02
1:A:267:LEU:CG	3:A:501:NAG:C1[8_666]	1.18	1.02
1:A:38:TYR:O	1:A:44:GLN:N[8_666]	1.18	1.02
1:A:38:TYR:O	1:A:43:HIS:C[8_666]	1.19	1.01
1:A:230:GLN:CG	3:A:506:MAN:O4[8_666]	1.19	1.01
1:A:265:ASN:CG	2:B:389:VAL:CG2[8_666]	1.20	1.00
1:A:212:GLN:CD	1:A:232:CYS:SG[8_666]	1.22	0.98
1:A:40:GLN:CB	1:A:44:GLN:CB[8_666]	1.23	0.97
1:A:40:GLN:O	1:A:41:LEU:CA[8_666]	1.24	0.96
1:A:255:PRO:CG	1:A:258:GLY:O[8_666]	1.24	0.96
1:A:260:LEU:CD2	1:A:261:GLN:CA[8_666]	1.24	0.96
1:A:273:THR:C	3:A:504:MAN:C2[8_666]	1.25	0.95
1:A:256:ASP:CA	1:A:257:GLU:C[8_666]	1.26	0.94
1:A:272:ILE:C	3:A:504:MAN:O4[8_666]	1.27	0.93
1:A:273:THR:N	3:A:504:MAN:O3[8_666]	1.27	0.93

*Continued on next page...*

*Continued from previous page...*

Atom-1	Atom-2	Interatomic distance (Å)	Clash overlap (Å)
1:A:41:LEU:CB	1:A:43:HIS:CB[8_666]	1.29	0.91
1:A:43:HIS:CD2	1:A:50:ILE:CG2[8_666]	1.30	0.90
1:A:39:ARG:CG	1:A:46:ASN:N[8_666]	1.31	0.89
1:A:275:PHE:CE2	3:A:502:NAG:C6[8_666]	1.31	0.89
1:A:274:LYS:CB	3:A:503:MAN:C5[8_666]	1.32	0.88
1:A:267:LEU:CG	3:A:501:NAG:O5[8_666]	1.33	0.87
1:A:256:ASP:C	1:A:256:ASP:C[8_666]	1.33	0.87
1:A:256:ASP:CG	1:A:257:GLU:CB[8_666]	1.33	0.87
1:A:267:LEU:CD1	3:A:501:NAG:O5[8_666]	1.33	0.87
1:A:255:PRO:CD	1:A:258:GLY:O[8_666]	1.34	0.86
1:A:260:LEU:CD1	1:A:261:GLN:N[8_666]	1.34	0.86
1:A:265:ASN:ND2	2:B:389:VAL:CG2[8_666]	1.35	0.85
1:A:212:GLN:O	1:A:234:LYS:CG[8_666]	1.36	0.84
1:A:272:ILE:CD1	3:A:502:NAG:C2[8_666]	1.36	0.84
1:A:39:ARG:CB	1:A:45:SER:C[8_666]	1.36	0.84
1:A:230:GLN:NE2	3:A:506:MAN:C4[8_666]	1.36	0.84
1:A:261:GLN:OE1	2:B:371:VAL:CG2[8_666]	1.37	0.83
1:A:275:PHE:CE2	3:A:502:NAG:C5[8_666]	1.37	0.83
1:A:230:GLN:CD	3:A:506:MAN:O4[8_666]	1.38	0.82
1:A:256:ASP:C	1:A:256:ASP:O[8_666]	1.39	0.81
1:A:210:VAL:O	1:A:266:GLU:OE2[8_666]	1.40	0.80
1:A:210:VAL:C	1:A:266:GLU:CD[8_666]	1.40	0.80
1:A:276:LEU:CA	3:A:504:MAN:C6[8_666]	1.41	0.79
1:A:230:GLN:NE2	3:A:506:MAN:C3[8_666]	1.41	0.79
1:A:267:LEU:CB	3:A:501:NAG:C1[8_666]	1.41	0.79
1:A:39:ARG:CD	1:A:47:SER:N[8_666]	1.43	0.77
1:A:267:LEU:CG	3:A:501:NAG:C2[8_666]	1.43	0.77
1:A:39:ARG:N	1:A:45:SER:N[8_666]	1.43	0.77
1:A:40:GLN:N	1:A:44:GLN:CB[8_666]	1.43	0.77
1:A:256:ASP:OD1	1:A:257:GLU:CB[8_666]	1.43	0.77
1:A:211:ASP:OD1	1:A:266:GLU:O[8_666]	1.43	0.77
1:A:41:LEU:CD1	1:A:43:HIS:CE1[8_666]	1.44	0.76
1:A:273:THR:N	3:A:504:MAN:C3[8_666]	1.44	0.76
1:A:259:LYS:CD	2:B:368:LYS:CE[8_666]	1.44	0.76
1:A:40:GLN:OE1	1:A:44:GLN:NE2[8_666]	1.45	0.75
1:A:272:ILE:CG1	3:A:502:NAG:N2[8_666]	1.45	0.75
1:A:274:LYS:CB	3:A:503:MAN:C6[8_666]	1.45	0.75
1:A:42:ALA:CB	1:A:42:ALA:CB[8_666]	1.45	0.75
1:A:46:ASN:O	1:A:264:GLU:O[8_666]	1.46	0.74
1:A:39:ARG:CZ	1:A:47:SER:OG[8_666]	1.46	0.74
1:A:40:GLN:CG	1:A:44:GLN:NE2[8_666]	1.46	0.74

*Continued on next page...*

*Continued from previous page...*

Atom-1	Atom-2	Interatomic distance (Å)	Clash overlap (Å)
1:A:273:THR:C	3:A:504:MAN:C1[8_666]	1.46	0.74
1:A:301:SER:CB	1:A:302:VAL:N[8_666]	1.46	0.74
1:A:273:THR:CG2	3:A:505:NAG:C1[8_666]	1.46	0.74
2:B:380:LYS:CD	3:A:505:NAG:C5[8_666]	1.47	0.73
1:A:275:PHE:CG	3:A:503:MAN:O2[8_666]	1.47	0.73
1:A:255:PRO:CB	1:A:258:GLY:CA[8_666]	1.49	0.71
1:A:272:ILE:CD1	3:A:502:NAG:C7[8_666]	1.49	0.71
1:A:275:PHE:C	3:A:504:MAN:C6[8_666]	1.49	0.71
1:A:300:LYS:O	1:A:301:SER:OG[8_666]	1.49	0.71
1:A:149:ASP:CB	1:A:234:LYS:NZ[6_556]	1.50	0.70
1:A:255:PRO:CG	1:A:258:GLY:C[8_666]	1.50	0.70
1:A:230:GLN:CB	3:A:506:MAN:O4[8_666]	1.51	0.69
1:A:40:GLN:CB	1:A:44:GLN:CG[8_666]	1.51	0.69
1:A:271:ILE:O	3:A:503:MAN:C1[8_666]	1.54	0.66
1:A:260:LEU:O	1:A:260:LEU:CD2[8_666]	1.54	0.66
1:A:259:LYS:CE	2:B:368:LYS:NZ[8_666]	1.54	0.66
1:A:272:ILE:CG1	3:A:502:NAG:C8[8_666]	1.54	0.66
1:A:39:ARG:CG	1:A:45:SER:O[8_666]	1.55	0.65
1:A:273:THR:CB	3:A:504:MAN:C2[8_666]	1.55	0.65
2:B:380:LYS:NZ	3:A:505:NAG:C4[8_666]	1.55	0.65
1:A:259:LYS:NZ	2:B:368:LYS:CD[8_666]	1.55	0.65
1:A:300:LYS:C	1:A:301:SER:CA[8_666]	1.55	0.65
1:A:255:PRO:C	1:A:258:GLY:C[8_666]	1.55	0.65
1:A:255:PRO:O	1:A:258:GLY:C[8_666]	1.56	0.64
1:A:267:LEU:CG	3:A:501:NAG:C5[8_666]	1.57	0.63
1:A:212:GLN:NE2	1:A:232:CYS:SG[8_666]	1.57	0.63
1:A:328:LYS:NZ	1:A:328:LYS:NZ[8_666]	1.57	0.63
1:A:260:LEU:CA	1:A:260:LEU:CA[8_666]	1.57	0.63
1:A:39:ARG:NH2	1:A:47:SER:CB[8_666]	1.58	0.62
1:A:273:THR:O	3:A:504:MAN:C1[8_666]	1.58	0.62
1:A:37:LEU:CA	1:A:44:GLN:O[8_666]	1.58	0.62
1:A:39:ARG:N	1:A:44:GLN:C[8_666]	1.59	0.61
1:A:262:HIS:ND1	2:B:369:PRO:CD[8_666]	1.59	0.61
1:A:260:LEU:N	1:A:260:LEU:CB[8_666]	1.59	0.61
2:B:380:LYS:NZ	3:A:505:NAG:C3[8_666]	1.61	0.59
1:A:42:ALA:C	1:A:42:ALA:CB[8_666]	1.61	0.59
1:A:256:ASP:CB	1:A:257:GLU:N[8_666]	1.62	0.58
1:A:265:ASN:OD1	2:B:389:VAL:CG2[8_666]	1.62	0.58
1:A:273:THR:C	3:A:504:MAN:O5[8_666]	1.62	0.58
1:A:275:PHE:CZ	3:A:502:NAG:C6[8_666]	1.63	0.57
1:A:259:LYS:CE	2:B:368:LYS:CD[8_666]	1.63	0.57

*Continued on next page...*

*Continued from previous page...*

Atom-1	Atom-2	Interatomic distance (Å)	Clash overlap (Å)
1:A:267:LEU:CB	3:A:501:NAG:C2[8_666]	1.63	0.57
1:A:256:ASP:N	1:A:258:GLY:CA[8_666]	1.63	0.57
1:A:259:LYS:NZ	2:B:368:LYS:CE[8_666]	1.64	0.56
1:A:37:LEU:C	1:A:44:GLN:C[8_666]	1.64	0.56
1:A:255:PRO:O	1:A:259:LYS:N[8_666]	1.64	0.56
1:A:41:LEU:CG	1:A:43:HIS:ND1[8_666]	1.64	0.56
1:A:275:PHE:CE1	3:A:503:MAN:O2[8_666]	1.65	0.55
1:A:46:ASN:O	1:A:265:ASN:N[8_666]	1.65	0.55
1:A:40:GLN:CD	1:A:44:GLN:NE2[8_666]	1.66	0.54
1:A:40:GLN:CA	1:A:41:LEU:O[8_666]	1.66	0.54
1:A:211:ASP:N	1:A:266:GLU:CG[8_666]	1.66	0.54
1:A:46:ASN:O	1:A:264:GLU:C[8_666]	1.66	0.54
1:A:256:ASP:CB	1:A:257:GLU:CB[8_666]	1.66	0.54
1:A:39:ARG:C	1:A:41:LEU:O[8_666]	1.67	0.53
1:A:267:LEU:N	3:A:501:NAG:N2[8_666]	1.68	0.52
1:A:259:LYS:CD	2:B:368:LYS:NZ[8_666]	1.68	0.52
1:A:40:GLN:CB	1:A:44:GLN:NE2[8_666]	1.69	0.51
1:A:260:LEU:CD2	1:A:261:GLN:N[8_666]	1.69	0.51
1:A:255:PRO:C	1:A:257:GLU:O[8_666]	1.70	0.50
1:A:358:MET:O	1:A:358:MET:O[8_666]	1.70	0.50
1:A:37:LEU:C	1:A:44:GLN:O[8_666]	1.70	0.50
1:A:211:ASP:CA	1:A:266:GLU:CD[8_666]	1.70	0.50
1:A:38:TYR:N	1:A:44:GLN:O[8_666]	1.71	0.49
1:A:267:LEU:CG	3:A:501:NAG:C4[8_666]	1.71	0.49
1:A:211:ASP:CG	1:A:266:GLU:O[8_666]	1.71	0.49
1:A:259:LYS:CG	2:B:368:LYS:NZ[8_666]	1.72	0.48
1:A:301:SER:CA	1:A:301:SER:CA[8_666]	1.72	0.48
1:A:300:LYS:C	1:A:301:SER:N[8_666]	1.72	0.48
1:A:40:GLN:CA	1:A:44:GLN:CB[8_666]	1.72	0.48
1:A:39:ARG:NH1	1:A:47:SER:OG[8_666]	1.72	0.48
1:A:38:TYR:CA	1:A:43:HIS:O[8_666]	1.73	0.47
1:A:274:LYS:N	3:A:504:MAN:C1[8_666]	1.73	0.47
1:A:149:ASP:OD2	1:A:234:LYS:NZ[6_556]	1.74	0.46
1:A:273:THR:O	3:A:504:MAN:C2[8_666]	1.74	0.46
1:A:273:THR:O	3:A:504:MAN:O2[8_666]	1.74	0.46
1:A:298:ASP:OD2	1:A:304:GLY:CA[8_666]	1.74	0.46
1:A:46:ASN:C	1:A:264:GLU:O[8_666]	1.74	0.46
1:A:256:ASP:CB	1:A:257:GLU:C[8_666]	1.74	0.46
1:A:271:ILE:C	3:A:502:NAG:O3[8_666]	1.75	0.45
1:A:38:TYR:C	1:A:44:GLN:N[8_666]	1.75	0.45
1:A:299:LEU:O	1:A:301:SER:CB[8_666]	1.75	0.45

*Continued on next page...*

*Continued from previous page...*

Atom-1	Atom-2	Interatomic distance (Å)	Clash overlap (Å)
1:A:212:GLN:CA	1:A:234:LYS:CB[8_666]	1.75	0.45
1:A:39:ARG:CG	1:A:46:ASN:CA[8_666]	1.75	0.45
1:A:41:LEU:CD1	1:A:43:HIS:CG[8_666]	1.76	0.44
1:A:211:ASP:C	1:A:266:GLU:CG[8_666]	1.76	0.44
1:A:39:ARG:CZ	1:A:47:SER:CA[8_666]	1.76	0.44
1:A:265:ASN:CB	2:B:389:VAL:CG1[8_666]	1.77	0.43
1:A:236:SER:O	1:A:257:GLU:CG[8_666]	1.77	0.43
1:A:259:LYS:CD	2:B:368:LYS:CD[8_666]	1.78	0.42
1:A:271:ILE:O	3:A:503:MAN:O5[8_666]	1.78	0.42
1:A:274:LYS:N	3:A:504:MAN:C3[8_666]	1.78	0.42
1:A:260:LEU:C	1:A:260:LEU:CD2[8_666]	1.79	0.41
1:A:256:ASP:OD1	1:A:257:GLU:CG[8_666]	1.80	0.40
1:A:267:LEU:CB	3:A:501:NAG:C3[8_666]	1.80	0.40
1:A:273:THR:CG2	3:A:504:MAN:O2[8_666]	1.80	0.40
1:A:212:GLN:C	1:A:234:LYS:CB[8_666]	1.80	0.40
1:A:39:ARG:CA	1:A:45:SER:O[8_666]	1.81	0.39
1:A:39:ARG:CA	1:A:45:SER:N[8_666]	1.81	0.39
1:A:259:LYS:NZ	2:B:368:LYS:CG[8_666]	1.81	0.39
1:A:274:LYS:CA	3:A:504:MAN:C1[8_666]	1.81	0.39
3:A:503:MAN:C3	5:A:395:CYS:N[8_666]	1.82	0.38
1:A:274:LYS:CB	3:A:503:MAN:O6[8_666]	1.82	0.38
1:A:39:ARG:CG	1:A:45:SER:CA[8_666]	1.82	0.38
1:A:298:ASP:O	1:A:305:GLN:NE2[8_666]	1.82	0.38
1:A:40:GLN:O	1:A:40:GLN:O[8_666]	1.83	0.37
1:A:42:ALA:CA	1:A:42:ALA:CB[8_666]	1.83	0.37
1:A:265:ASN:C	3:A:501:NAG:O7[8_666]	1.83	0.37
1:A:37:LEU:C	1:A:44:GLN:CA[8_666]	1.84	0.36
1:A:297:TYR:CB	1:A:305:GLN:OE1[8_666]	1.84	0.36
1:A:211:ASP:OD1	1:A:266:GLU:C[8_666]	1.85	0.35
1:A:274:LYS:CA	3:A:503:MAN:C5[8_666]	1.85	0.35
1:A:39:ARG:NE	1:A:46:ASN:C[8_666]	1.85	0.35
1:A:276:LEU:CA	3:A:504:MAN:O6[8_666]	1.85	0.35
1:A:273:THR:C	3:A:503:MAN:O6[8_666]	1.86	0.34
1:A:275:PHE:N	3:A:503:MAN:O5[8_666]	1.86	0.34
1:A:274:LYS:N	3:A:503:MAN:C6[8_666]	1.87	0.33
1:A:273:THR:CA	3:A:504:MAN:C2[8_666]	1.87	0.33
1:A:274:LYS:C	3:A:503:MAN:C6[8_666]	1.88	0.32
1:A:38:TYR:O	1:A:42:ALA:O[8_666]	1.88	0.32
1:A:210:VAL:CA	1:A:266:GLU:OE2[8_666]	1.88	0.32
1:A:272:ILE:O	3:A:504:MAN:C4[8_666]	1.88	0.32
1:A:38:TYR:C	1:A:44:GLN:CA[8_666]	1.88	0.32

*Continued on next page...*

*Continued from previous page...*

Atom-1	Atom-2	Interatomic distance (Å)	Clash overlap (Å)
1:A:211:ASP:CB	1:A:266:GLU:CG[8_666]	1.88	0.32
1:A:212:GLN:O	1:A:234:LYS:CD[8_666]	1.88	0.32
1:A:39:ARG:CZ	1:A:47:SER:CB[8_666]	1.88	0.32
1:A:209:HIS:O	1:A:262:HIS:CE1[8_666]	1.88	0.32
1:A:231:HIS:NE2	1:A:257:GLU:OE1[8_666]	1.89	0.31
1:A:39:ARG:CB	1:A:45:SER:CA[8_666]	1.89	0.31
1:A:39:ARG:NH1	1:A:47:SER:CB[8_666]	1.90	0.30
1:A:261:GLN:CD	2:B:371:VAL:CG2[8_666]	1.90	0.30
1:A:301:SER:N	1:A:301:SER:C[8_666]	1.90	0.30
1:A:255:PRO:CB	1:A:258:GLY:C[8_666]	1.90	0.30
1:A:212:GLN:O	1:A:234:LYS:CB[8_666]	1.91	0.29
1:A:210:VAL:CG1	1:A:266:GLU:OE1[8_666]	1.91	0.29
1:A:231:HIS:CE1	1:A:257:GLU:OE1[8_666]	1.92	0.28
1:A:260:LEU:CA	1:A:260:LEU:CG[8_666]	1.92	0.28
1:A:267:LEU:CD2	3:A:501:NAG:O5[8_666]	1.92	0.28
1:A:273:THR:OG1	3:A:504:MAN:O3[8_666]	1.92	0.28
1:A:275:PHE:N	3:A:504:MAN:C5[8_666]	1.93	0.27
1:A:39:ARG:CZ	1:A:47:SER:N[8_666]	1.93	0.27
1:A:149:ASP:OD1	5:A:395:CYS:OXT[6_556]	1.93	0.27
1:A:274:LYS:N	3:A:504:MAN:C2[8_666]	1.93	0.27
1:A:275:PHE:O	3:A:504:MAN:O6[8_666]	1.93	0.27
1:A:267:LEU:CG	3:A:501:NAG:C3[8_666]	1.93	0.27
1:A:255:PRO:N	1:A:258:GLY:CA[8_666]	1.94	0.26
1:A:211:ASP:N	1:A:266:GLU:OE2[8_666]	1.95	0.25
1:A:255:PRO:CA	1:A:258:GLY:N[8_666]	1.95	0.25
1:A:276:LEU:CB	3:A:504:MAN:C6[8_666]	1.96	0.24
1:A:230:GLN:NE2	3:A:506:MAN:C5[8_666]	1.97	0.23
1:A:272:ILE:CA	3:A:502:NAG:C3[8_666]	1.97	0.23
1:A:211:ASP:N	1:A:266:GLU:OE1[8_666]	1.97	0.23
1:A:38:TYR:N	1:A:44:GLN:C[8_666]	1.97	0.23
1:A:152:GLU:OE1	1:A:213:VAL:O[3_644]	1.97	0.23
1:A:37:LEU:O	1:A:44:GLN:CB[8_666]	1.98	0.22
1:A:265:ASN:CA	3:A:501:NAG:O7[8_666]	1.98	0.22
1:A:271:ILE:O	3:A:502:NAG:O3[8_666]	1.98	0.22
1:A:264:GLU:N	3:A:501:NAG:C8[8_666]	1.98	0.22
1:A:298:ASP:N	1:A:305:GLN:OE1[8_666]	1.99	0.21
1:A:212:GLN:CD	1:A:232:CYS:CB[8_666]	1.99	0.21
1:A:255:PRO:CA	1:A:258:GLY:C[8_666]	1.99	0.21
1:A:41:LEU:CB	1:A:43:HIS:CG[8_666]	1.99	0.21
1:A:260:LEU:O	1:A:260:LEU:CG[8_666]	2.00	0.20
1:A:230:GLN:NE2	3:A:506:MAN:O3[8_666]	2.00	0.20

*Continued on next page...*

*Continued from previous page...*

Atom-1	Atom-2	Interatomic distance (Å)	Clash overlap (Å)
1:A:42:ALA:N	1:A:42:ALA:C[8_666]	2.01	0.19
1:A:275:PHE:CE1	3:A:506:MAN:C5[8_666]	2.01	0.19
1:A:274:LYS:O	3:A:504:MAN:O5[8_666]	2.01	0.19
1:A:40:GLN:CB	1:A:44:GLN:OE1[8_666]	2.02	0.18
1:A:275:PHE:CD2	3:A:502:NAG:O4[8_666]	2.02	0.18
1:A:264:GLU:C	3:A:501:NAG:C8[8_666]	2.02	0.18
1:A:260:LEU:O	1:A:260:LEU:CB[8_666]	2.02	0.18
1:A:39:ARG:NE	1:A:47:SER:CA[8_666]	2.03	0.17
1:A:255:PRO:C	1:A:258:GLY:N[8_666]	2.03	0.17
1:A:44:GLN:OE1	1:A:302:VAL:CG1[8_666]	2.04	0.16
1:A:46:ASN:CG	1:A:264:GLU:O[8_666]	2.04	0.16
1:A:38:TYR:O	1:A:43:HIS:O[8_666]	2.04	0.16
1:A:274:LYS:C	3:A:504:MAN:O5[8_666]	2.05	0.15
1:A:276:LEU:N	3:A:504:MAN:C5[8_666]	2.05	0.15
1:A:35:PHE:O	1:A:45:SER:CA[8_666]	2.05	0.15
1:A:37:LEU:N	1:A:44:GLN:O[8_666]	2.06	0.14
1:A:39:ARG:CD	1:A:46:ASN:C[8_666]	2.06	0.14
1:A:272:ILE:C	3:A:504:MAN:C4[8_666]	2.06	0.14
1:A:275:PHE:CD2	3:A:502:NAG:O6[8_666]	2.07	0.13
1:A:41:LEU:N	1:A:44:GLN:N[8_666]	2.07	0.13
1:A:275:PHE:CE1	3:A:506:MAN:O5[8_666]	2.07	0.13
1:A:40:GLN:CG	1:A:44:GLN:CG[8_666]	2.08	0.12
1:A:273:THR:O	3:A:504:MAN:C3[8_666]	2.08	0.12
1:A:273:THR:CB	3:A:504:MAN:O3[8_666]	2.09	0.11
1:A:46:ASN:ND2	1:A:267:LEU:CD1[8_666]	2.09	0.11
1:A:272:ILE:C	3:A:502:NAG:O3[8_666]	2.09	0.11
1:A:212:GLN:OE1	1:A:232:CYS:CA[8_666]	2.10	0.10
1:A:273:THR:CG2	3:A:505:NAG:C2[8_666]	2.10	0.10
1:A:255:PRO:O	1:A:258:GLY:O[8_666]	2.10	0.10
1:A:273:THR:C	3:A:504:MAN:O2[8_666]	2.10	0.10
3:A:506:MAN:C1	5:A:395:CYS:CB[8_666]	2.10	0.10
1:A:149:ASP:CB	1:A:234:LYS:CE[6_556]	2.11	0.09
1:A:275:PHE:CE1	3:A:503:MAN:C2[8_666]	2.11	0.09
1:A:39:ARG:CB	1:A:45:SER:N[8_666]	2.11	0.09
1:A:263:LEU:O	3:A:501:NAG:C7[8_666]	2.12	0.08
1:A:272:ILE:CG1	3:A:502:NAG:O7[8_666]	2.12	0.08
1:A:272:ILE:CD1	3:A:502:NAG:C1[8_666]	2.12	0.08
1:A:38:TYR:O	1:A:42:ALA:C[8_666]	2.12	0.08
1:A:274:LYS:C	3:A:503:MAN:C5[8_666]	2.12	0.08
1:A:40:GLN:N	1:A:44:GLN:CA[8_666]	2.12	0.08
1:A:275:PHE:CG	3:A:502:NAG:O4[8_666]	2.12	0.08

*Continued on next page...*

*Continued from previous page...*

Atom-1	Atom-2	Interatomic distance (Å)	Clash overlap (Å)
1:A:41:LEU:C	1:A:43:HIS:N[8_666]	2.13	0.07
1:A:267:LEU:CD2	3:A:501:NAG:C6[8_666]	2.13	0.07
1:A:41:LEU:CB	1:A:43:HIS:CA[8_666]	2.13	0.07
1:A:211:ASP:CB	1:A:266:GLU:OE1[8_666]	2.13	0.07
1:A:38:TYR:OH	1:A:261:GLN:CD[8_666]	2.13	0.07
1:A:273:THR:CA	3:A:504:MAN:C4[8_666]	2.13	0.07
1:A:235:LEU:CD2	3:A:501:NAG:O3[8_666]	2.14	0.06
1:A:273:THR:CG2	3:A:504:MAN:C2[8_666]	2.14	0.06
1:A:275:PHE:CD1	3:A:503:MAN:C2[8_666]	2.14	0.06
1:A:267:LEU:CA	3:A:501:NAG:C3[8_666]	2.14	0.06
1:A:36:SER:O	1:A:45:SER:CB[8_666]	2.15	0.05
1:A:255:PRO:N	1:A:258:GLY:O[8_666]	2.15	0.05
1:A:40:GLN:CG	1:A:44:GLN:CD[8_666]	2.15	0.05
1:A:273:THR:N	3:A:504:MAN:C4[8_666]	2.15	0.05
1:A:39:ARG:NH2	1:A:47:SER:CA[8_666]	2.15	0.05
1:A:276:LEU:CD2	3:A:505:NAG:C6[8_666]	2.15	0.05
1:A:275:PHE:CD2	3:A:502:NAG:C5[8_666]	2.15	0.05
1:A:264:GLU:CA	3:A:501:NAG:C8[8_666]	2.16	0.04
1:A:236:SER:C	1:A:257:GLU:CG[8_666]	2.16	0.04
2:B:380:LYS:CG	3:A:505:NAG:C6[8_666]	2.16	0.04
1:A:35:PHE:O	1:A:46:ASN:N[8_666]	2.16	0.04
1:A:37:LEU:O	1:A:44:GLN:N[8_666]	2.17	0.03
1:A:43:HIS:NE2	1:A:50:ILE:CG2[8_666]	2.17	0.03
1:A:256:ASP:CA	1:A:258:GLY:N[8_666]	2.17	0.03
2:B:380:LYS:CG	3:A:505:NAG:O4[8_666]	2.17	0.03
2:B:380:LYS:NZ	3:A:505:NAG:C2[8_666]	2.17	0.03
1:A:38:TYR:C	1:A:43:HIS:O[8_666]	2.18	0.02
1:A:230:GLN:CD	3:A:506:MAN:C4[8_666]	2.18	0.02
1:A:41:LEU:CB	1:A:43:HIS:ND1[8_666]	2.18	0.02
1:A:42:ALA:N	1:A:42:ALA:N[8_666]	2.18	0.02
1:A:210:VAL:CB	1:A:266:GLU:OE1[8_666]	2.19	0.01
1:A:255:PRO:C	1:A:257:GLU:C[8_666]	2.19	0.01

## 5.3 Torsion angles ⓘ

### 5.3.1 Protein backbone ⓘ

In the following table, the Percentiles column shows the percent Ramachandran outliers of the chain as a percentile score with respect to all X-ray entries followed by that with respect to entries of similar resolution.

The Analysed column shows the number of residues for which the backbone conformation was

analysed, and the total number of residues.

Mol	Chain	Analysed	Favoured	Allowed	Outliers	Percentiles	
1	A	337/347 (97%)	323 (96%)	14 (4%)	0	100	100
2	B	34/36 (94%)	32 (94%)	2 (6%)	0	100	100
All	All	371/383 (97%)	355 (96%)	16 (4%)	0	100	100

There are no Ramachandran outliers to report.

### 5.3.2 Protein sidechains ⓘ

In the following table, the Percentiles column shows the percent sidechain outliers of the chain as a percentile score with respect to all X-ray entries followed by that with respect to entries of similar resolution.

The Analysed column shows the number of residues for which the sidechain conformation was analysed, and the total number of residues.

Mol	Chain	Analysed	Rotameric	Outliers	Percentiles	
1	A	297/305 (97%)	277 (93%)	20 (7%)	19	54
2	B	35/35 (100%)	34 (97%)	1 (3%)	48	82
All	All	332/340 (98%)	311 (94%)	21 (6%)	19	57

All (21) residues with a non-rotameric sidechain are listed below:

Mol	Chain	Res	Type
1	A	22	THR
1	A	23	PHE
1	A	24	ASN
1	A	68	THR
1	A	109	GLN
1	A	125	LYS
1	A	146	ASN
1	A	151	GLU
1	A	169	ILE
1	A	186	ASN
1	A	200	VAL
1	A	201	LYS
1	A	202	ASP
1	A	273	THR
1	A	276	LEU
1	A	282	ARG

*Continued on next page...*

*Continued from previous page...*

Mol	Chain	Res	Type
1	A	288	LEU
1	A	305	GLN
1	A	311	VAL
1	A	342	GLU
2	B	374	MET

Some sidechains can be flipped to improve hydrogen bonding and reduce clashes. All (8) such sidechains are listed below:

Mol	Chain	Res	Type
1	A	29	ASN
1	A	97	GLN
1	A	146	ASN
1	A	186	ASN
1	A	212	GLN
1	A	228	ASN
1	A	278	ASN
2	B	377	GLN

### 5.3.3 RNA ⓘ

There are no RNA molecules in this entry.

## 5.4 Non-standard residues in protein, DNA, RNA chains ⓘ

There are no non-standard protein/DNA/RNA residues in this entry.

## 5.5 Carbohydrates ⓘ

10 carbohydrates are modelled in this entry.

In the following table, the Counts columns list the number of bonds (or angles) for which Mogul statistics could be retrieved, the number of bonds (or angles) that are observed in the model and the number of bonds (or angles) that are defined in the chemical component dictionary. The Link column lists molecule types, if any, to which the group is linked. The Z score for a bond length (or angle) is the number of standard deviations the observed value is removed from the expected value. A bond length (or angle) with  $|Z| > 2$  is considered an outlier worth inspection. RMSZ is the root-mean-square of all Z scores of the bond lengths (or angles).

Mol	Type	Chain	Res	Link	Bond lengths			Bond angles		
					Counts	RMSZ	$\# Z  > 2$	Counts	RMSZ	$\# Z  > 2$
3	NAG	A	501	1,3	14,14,15	0.82	0	15,19,21	1.88	5 (33%)

Mol	Type	Chain	Res	Link	Bond lengths			Bond angles		
					Counts	RMSZ	# Z  > 2	Counts	RMSZ	# Z  > 2
3	NAG	A	502	3	14,14,15	0.84	1 (7%)	15,19,21	1.69	3 (20%)
3	MAN	A	503	3	11,11,12	0.73	0	13,15,17	1.67	1 (7%)
3	MAN	A	504	3	11,11,12	0.71	0	13,15,17	1.70	2 (15%)
3	NAG	A	505	3	14,14,15	0.81	1 (7%)	15,19,21	1.96	3 (20%)
3	MAN	A	506	3	11,11,12	0.68	0	13,15,17	1.71	1 (7%)
4	NAG	A	510	1,4	14,14,15	0.80	0	15,19,21	1.39	1 (6%)
4	NAG	A	511	4	14,14,15	0.66	0	15,19,21	1.54	1 (6%)
4	NAG	A	520	1,4	14,14,15	0.99	1 (7%)	15,19,21	2.01	6 (40%)
4	NAG	A	521	4	14,14,15	0.77	0	15,19,21	2.23	7 (46%)

In the following table, the Chirals column lists the number of chiral outliers, the number of chiral centers analysed, the number of these observed in the model and the number defined in the chemical component dictionary. Similar counts are reported in the Torsion and Rings columns. '-' means no outliers of that kind were identified.

Mol	Type	Chain	Res	Link	Chirals	Torsions	Rings
3	NAG	A	501	1,3	-	0/6/23/26	0/1/1/1
3	NAG	A	502	3	-	0/6/23/26	0/1/1/1
3	MAN	A	503	3	1/1/4/5	0/2/19/22	0/1/1/1
3	MAN	A	504	3	-	0/2/19/22	0/1/1/1
3	NAG	A	505	3	-	0/6/23/26	0/1/1/1
3	MAN	A	506	3	-	0/2/19/22	0/1/1/1
4	NAG	A	510	1,4	-	0/6/23/26	0/1/1/1
4	NAG	A	511	4	-	0/6/23/26	0/1/1/1
4	NAG	A	520	1,4	1/1/5/7	0/6/23/26	0/1/1/1
4	NAG	A	521	4	-	0/6/23/26	0/1/1/1

All (3) bond length outliers are listed below:

Mol	Chain	Res	Type	Atoms	Z	Observed(Å)	Ideal(Å)
3	A	505	NAG	C1-C2	2.01	1.55	1.52
3	A	502	NAG	C1-C2	2.06	1.55	1.52
4	A	520	NAG	C1-C2	2.83	1.56	1.52

All (30) bond angle outliers are listed below:

Mol	Chain	Res	Type	Atoms	Z	Observed(°)	Ideal(°)
3	A	501	NAG	O5-C1-C2	-3.69	106.33	111.47
3	A	505	NAG	O5-C1-C2	-2.84	107.52	111.47
4	A	521	NAG	C4-C3-C2	-2.81	106.91	111.02

*Continued on next page...*

*Continued from previous page...*

Mol	Chain	Res	Type	Atoms	Z	Observed(°)	Ideal(°)
3	A	504	MAN	O5-C1-C2	-2.73	106.52	110.79
4	A	520	NAG	O5-C1-C2	-2.56	107.91	111.47
4	A	520	NAG	O7-C7-C8	-2.34	117.80	122.06
3	A	502	NAG	O5-C1-C2	-2.23	108.37	111.47
3	A	501	NAG	O4-C4-C3	-2.19	105.59	110.36
4	A	521	NAG	O5-C1-C2	-2.17	108.45	111.47
4	A	521	NAG	O7-C7-N2	2.00	125.77	121.92
3	A	505	NAG	O7-C7-N2	2.02	125.81	121.92
3	A	501	NAG	C3-C4-C5	2.03	113.79	110.22
4	A	521	NAG	O4-C4-C3	2.07	114.85	110.36
3	A	502	NAG	O7-C7-N2	2.07	125.91	121.92
4	A	521	NAG	C2-N2-C7	2.22	126.18	122.94
4	A	521	NAG	C1-C2-N2	2.23	114.30	110.49
4	A	520	NAG	C2-N2-C7	2.25	126.23	122.94
3	A	501	NAG	C4-C3-C2	2.30	114.40	111.02
4	A	520	NAG	O7-C7-N2	2.53	126.79	121.92
4	A	520	NAG	C1-C2-N2	2.76	115.20	110.49
4	A	510	NAG	C1-O5-C5	3.67	117.23	112.17
3	A	501	NAG	C1-O5-C5	3.91	117.55	112.17
3	A	504	MAN	C1-O5-C5	4.42	118.26	112.17
3	A	502	NAG	C1-O5-C5	4.56	118.46	112.17
4	A	520	NAG	C1-O5-C5	4.85	118.85	112.17
4	A	511	NAG	C1-O5-C5	5.15	119.27	112.17
3	A	503	MAN	C1-O5-C5	5.39	119.60	112.17
3	A	506	MAN	C1-O5-C5	5.85	120.23	112.17
3	A	505	NAG	C1-O5-C5	5.95	120.36	112.17
4	A	521	NAG	C1-O5-C5	6.26	120.79	112.17

All (2) chirality outliers are listed below:

Mol	Chain	Res	Type	Atom
4	A	520	NAG	C1
3	A	503	MAN	C1

There are no torsion outliers.

There are no ring outliers.

7 monomers are involved in 136 short contacts:

Mol	Chain	Res	Type	Clashes	Symm-Clashes
3	A	501	NAG	0	26
3	A	502	NAG	0	23

*Continued on next page...*

Continued from previous page...

Mol	Chain	Res	Type	Clashes	Symm-Clashes
3	A	503	MAN	0	20
3	A	504	MAN	0	42
3	A	505	NAG	0	13
3	A	506	MAN	0	11
4	A	520	NAG	1	0

## 5.6 Ligand geometry

1 ligand is modelled in this entry.

In the following table, the Counts columns list the number of bonds (or angles) for which Mogul statistics could be retrieved, the number of bonds (or angles) that are observed in the model and the number of bonds (or angles) that are defined in the chemical component dictionary. The Link column lists molecule types, if any, to which the group is linked. The Z score for a bond length (or angle) is the number of standard deviations the observed value is removed from the expected value. A bond length (or angle) with  $|Z| > 2$  is considered an outlier worth inspection. RMSZ is the root-mean-square of all Z scores of the bond lengths (or angles).

Mol	Type	Chain	Res	Link	Bond lengths			Bond angles		
					Counts	RMSZ	$\# Z  > 2$	Counts	RMSZ	$\# Z  > 2$
5	CYS	A	395	1	2,6,6	1.61	1 (50%)	1,7,7	0.17	0

In the following table, the Chirals column lists the number of chiral outliers, the number of chiral centers analysed, the number of these observed in the model and the number defined in the chemical component dictionary. Similar counts are reported in the Torsion and Rings columns. '-' means no outliers of that kind were identified.

Mol	Type	Chain	Res	Link	Chirals	Torsions	Rings
5	CYS	A	395	1	-	0/2/6/6	0/0/0/0

All (1) bond length outliers are listed below:

Mol	Chain	Res	Type	Atoms	Z	Observed(Å)	Ideal(Å)
5	A	395	CYS	CB-CA	2.28	1.55	1.53

There are no bond angle outliers.

There are no chirality outliers.

There are no torsion outliers.

There are no ring outliers.

1 monomer is involved in 3 short contacts:

Mol	Chain	Res	Type	Clashes	Symm-Clashes
5	A	395	CYS	0	3

## 5.7 Other polymers [i](#)

There are no such residues in this entry.

## 5.8 Polymer linkage issues [i](#)

There are no chain breaks in this entry.

## 6 Fit of model and data

### 6.1 Protein, DNA and RNA chains

EDS was not executed - this section is therefore empty.

### 6.2 Non-standard residues in protein, DNA, RNA chains

EDS was not executed - this section is therefore empty.

### 6.3 Carbohydrates

EDS was not executed - this section is therefore empty.

### 6.4 Ligands

EDS was not executed - this section is therefore empty.

### 6.5 Other polymers

EDS was not executed - this section is therefore empty.