



wwPDB X-ray Structure Validation Summary Report ⓘ

Oct 30, 2017 – 06:39 AM EDT

PDB ID : 3NMS
Title : Staphylococcal Complement Inhibitor (SCIN) in complex with Human Complement C3c
Authors : Geisbrecht, B.V.; Garcia, B.L.
Deposited on : unknown
Resolution : 4.10 Å(reported)

This is a wwPDB X-ray Structure Validation Summary Report for a publicly released PDB entry.

We welcome your comments at validation@mail.wwpdb.org

A user guide is available at

<http://wwpdb.org/validation/2016/XrayValidationReportHelp>

with specific help available everywhere you see the ⓘ symbol.

The following versions of software and data (see [references ⓘ](#)) were used in the production of this report:

MolProbity : 4.02b-467
Mogul : 1.7.2 (RC1), CSD as538be (2017)
Xtriage (Phenix) : 1.9-1692
EDS : rb-20030345
Percentile statistics : 20161228.v01 (using entries in the PDB archive December 28th 2016)
Refmac : 5.8.0135
CCP4 : 6.5.0
Ideal geometry (proteins) : Engh & Huber (2001)
Ideal geometry (DNA, RNA) : Parkinson et al. (1996)
Validation Pipeline (wwPDB-VP) : rb-20030345

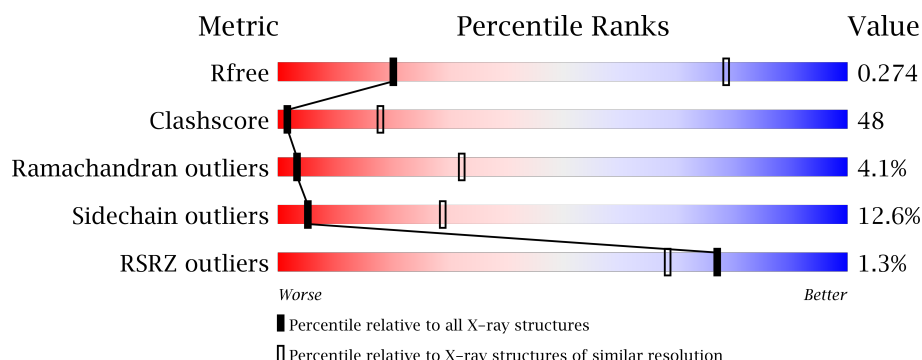
1 Overall quality at a glance i

The following experimental techniques were used to determine the structure:

X-RAY DIFFRACTION

The reported resolution of this entry is 4.10 Å.

Percentile scores (ranging between 0-100) for global validation metrics of the entry are shown in the following graphic. The table shows the number of entries on which the scores are based.



Metric	Whole archive (#Entries)	Similar resolution (#Entries, resolution range(Å))
R_{free}	100719	1153 (4.60-3.60)
Clashscore	112137	1002 (4.54-3.66)
Ramachandran outliers	110173	1000 (4.58-3.62)
Sidechain outliers	110143	1191 (4.60-3.60)
RSRZ outliers	101464	1165 (4.60-3.60)

The table below summarises the geometric issues observed across the polymeric chains and their fit to the electron density. The red, orange, yellow and green segments on the lower bar indicate the fraction of residues that contain outliers for ≥ 3 , 2, 1 and 0 types of geometric quality criteria. A grey segment represents the fraction of residues that are not modelled. The numeric value for each fraction is indicated below the corresponding segment, with a dot representing fractions $\leq 5\%$. The upper red bar (where present) indicates the fraction of residues that have poor fit to the electron density. The numeric value is given above the bar.

Mol	Chain	Length	Quality of chain
1	A	645	<div> <div style="width: 100%; height: 10px; background: linear-gradient(to right, red, orange, yellow, green, grey);"></div> <div style="display: flex; justify-content: space-between; padding: 0 5px;"> 0% 46% 47% 5% </div> </div>
2	C	343	<div> <div style="width: 100%; height: 10px; background: linear-gradient(to right, red, orange, yellow, green, grey);"></div> <div style="display: flex; justify-content: space-between; padding: 0 5px;"> 3% 26% 47% 12% 14% </div> </div>
3	M	88	<div> <div style="width: 100%; height: 10px; background: linear-gradient(to right, red, orange, yellow, green, grey);"></div> <div style="display: flex; justify-content: space-between; padding: 0 5px;"> 0% 45% 38% 13% 5% </div> </div>
4	B	206	<div> <div style="width: 100%; height: 10px; background: linear-gradient(to right, red, orange, yellow, green, grey);"></div> <div style="display: flex; justify-content: space-between; padding: 0 5px;"> 0% 25% 49% 16% 11% </div> </div>

2 Entry composition

There are 5 unique types of molecules in this entry. The entry contains 9561 atoms, of which 0 are hydrogens and 0 are deuteriums.

In the tables below, the ZeroOcc column contains the number of atoms modelled with zero occupancy, the AltConf column contains the number of residues with at least one atom in alternate conformation and the Trace column contains the number of residues modelled with at most 2 atoms.

- Molecule 1 is a protein called Complement C3.

Mol	Chain	Residues	Atoms					ZeroOcc	AltConf	Trace
1	A	641	Total	C	N	O	S	0	0	0
			4989	3175	846	953	15			

- Molecule 2 is a protein called Complement C3.

Mol	Chain	Residues	Atoms					ZeroOcc	AltConf	Trace
2	C	294	Total	C	N	O	S	0	0	0
			2388	1506	391	471	20			

- Molecule 3 is a protein called Staphylococcal complement inhibitor.

Mol	Chain	Residues	Atoms					ZeroOcc	AltConf	Trace
3	M	84	Total	C	N	O	S	0	0	0
			682	432	111	137	2			

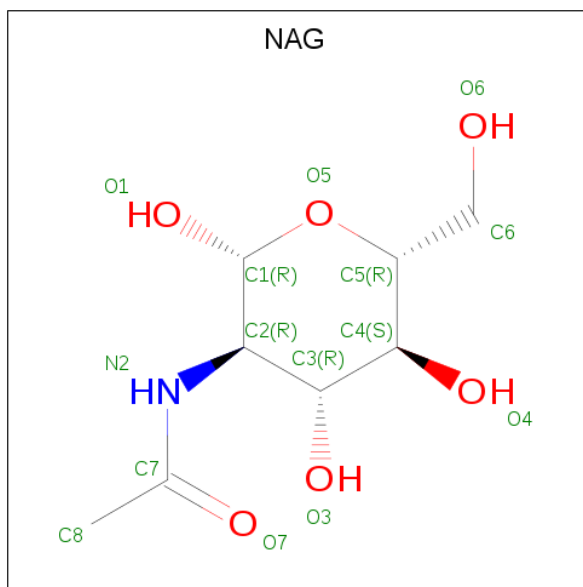
There are 3 discrepancies between the modelled and reference sequences:

Chain	Residue	Modelled	Actual	Comment	Reference
M	-2	GLY	-	EXPRESSION TAG	UNP Q931M7
M	-1	THR	-	EXPRESSION TAG	UNP Q931M7
M	0	SER	-	EXPRESSION TAG	UNP Q931M7

- Molecule 4 is a protein called Complement C3.

Mol	Chain	Residues	Atoms					ZeroOcc	AltConf	Trace
4	B	184	Total	C	N	O	S	0	0	0
			1488	956	250	277	5			

- Molecule 5 is N-ACETYL-D-GLUCOSAMINE (three-letter code: NAG) (formula: C₈H₁₅NO₆).

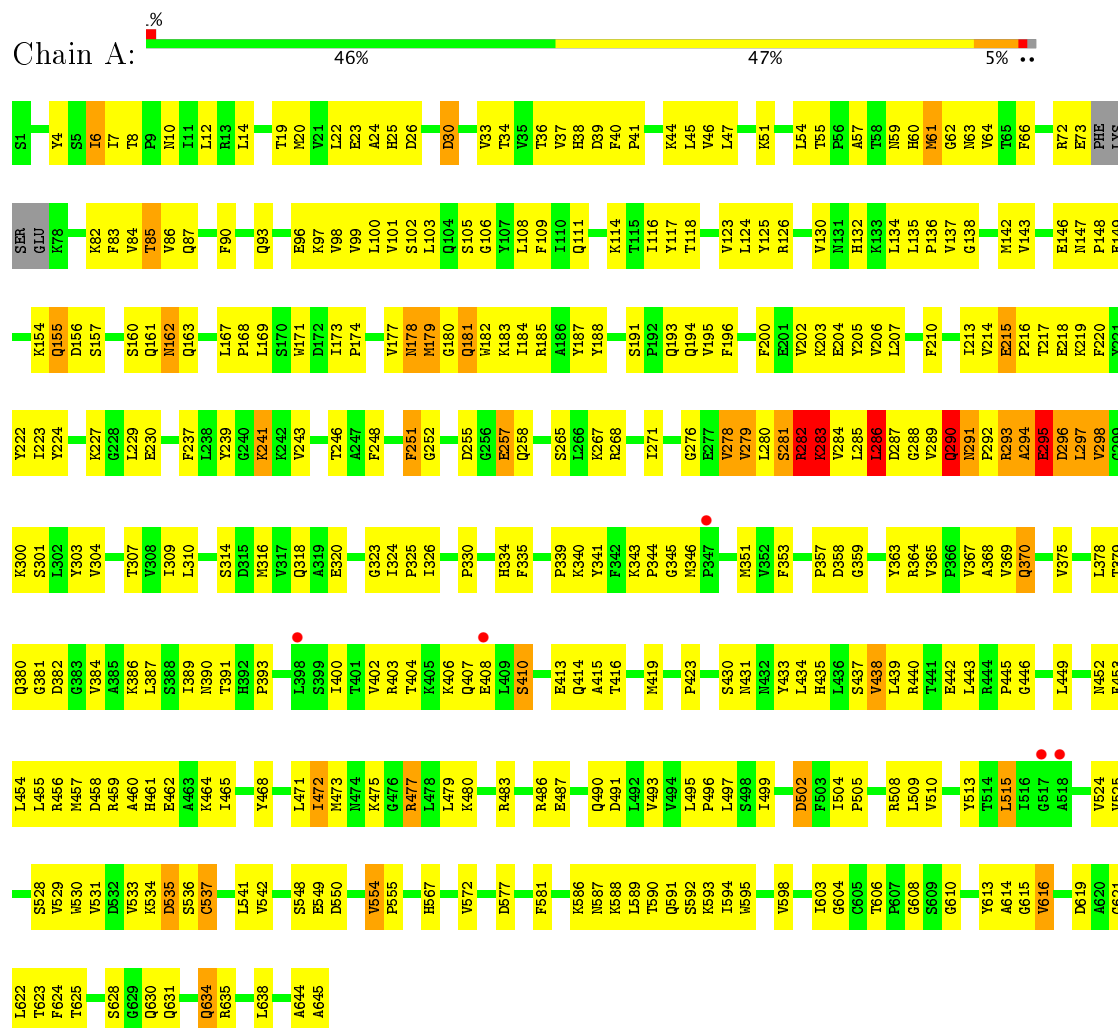


Mol	Chain	Residues	Atoms				ZeroOcc	AltConf
5	A	1	Total	C	N	O	0	0
			14	8	1	5		

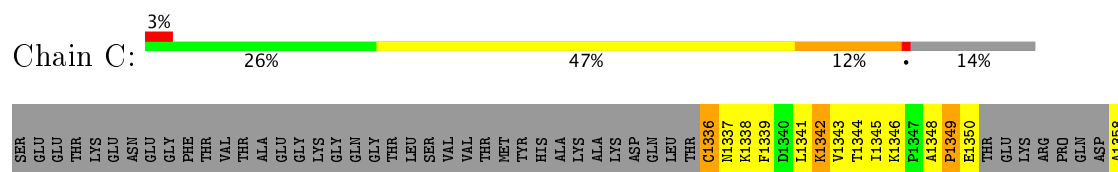
3 Residue-property plots

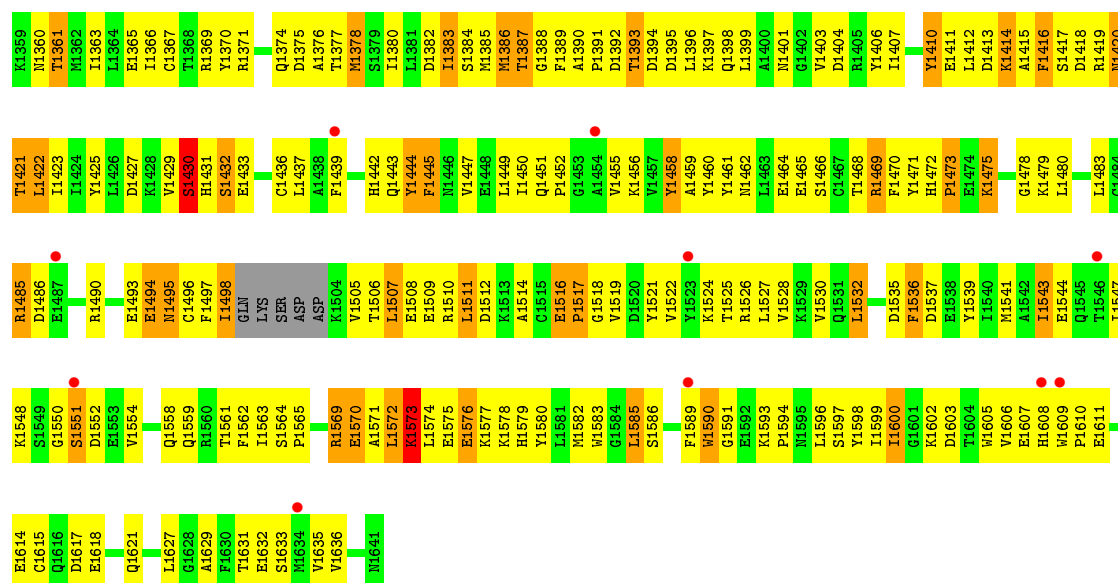
These plots are drawn for all protein, RNA and DNA chains in the entry. The first graphic for a chain summarises the proportions of the various outlier classes displayed in the second graphic. The second graphic shows the sequence view annotated by issues in geometry and electron density. Residues are color-coded according to the number of geometric quality criteria for which they contain at least one outlier: green = 0, yellow = 1, orange = 2 and red = 3 or more. A red dot above a residue indicates a poor fit to the electron density ($RSRZ > 2$). Stretches of 2 or more consecutive residues without any outlier are shown as a green connector. Residues present in the sample, but not in the model, are shown in grey.

• Molecule 1: Complement C3

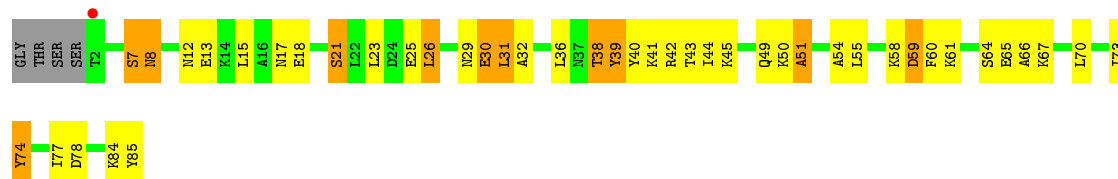


• Molecule 2: Complement C3

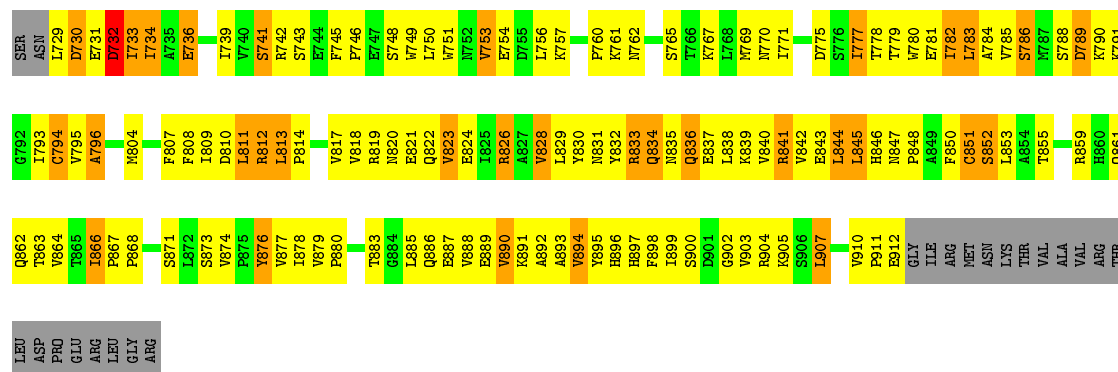




• Molecule 3: Staphylococcal complement inhibitor



• Molecule 4: Complement C3



4 Data and refinement statistics

Property	Value	Source
Space group	P 21 21 2	Depositor
Cell constants a, b, c, α , β , γ	214.07Å 68.43Å 114.93Å 90.00° 90.00° 90.00°	Depositor
Resolution (Å)	49.39 – 4.10 49.39 – 4.10	Depositor EDS
% Data completeness (in resolution range)	98.2 (49.39-4.10) 98.2 (49.39-4.10)	Depositor EDS
R_{merge}	0.18	Depositor
R_{sym}	(Not available)	Depositor
$\langle I/\sigma(I) \rangle$ ¹	3.68 (at 4.14Å)	Xtriage
Refinement program	PHENIX 1.5_2	Depositor
R, R_{free}	0.271 , 0.289 0.252 , 0.274	Depositor DCC
R_{free} test set	1363 reflections (10.00%)	DCC
Wilson B-factor (Å ²)	121.4	Xtriage
Anisotropy	0.376	Xtriage
Bulk solvent k_{sol} (e/Å ³), B_{sol} (Å ²)	0.24 , 115.4	EDS
L-test for twinning ²	$\langle L \rangle = 0.48$, $\langle L^2 \rangle = 0.31$	Xtriage
Estimated twinning fraction	No twinning to report.	Xtriage
F_o, F_c correlation	0.84	EDS
Total number of atoms	9561	wwPDB-VP
Average B, all atoms (Å ²)	161.0	wwPDB-VP

Xtriage's analysis on translational NCS is as follows: *The largest off-origin peak in the Patterson function is 3.49% of the height of the origin peak. No significant pseudotranslation is detected.*

¹Intensities estimated from amplitudes.

²Theoretical values of $\langle |L| \rangle$, $\langle L^2 \rangle$ for acentric reflections are 0.5, 0.333 respectively for untwinned datasets, and 0.375, 0.2 for perfectly twinned datasets.

5 Model quality [i](#)

5.1 Standard geometry [i](#)

Bond lengths and bond angles in the following residue types are not validated in this section: NAG

The Z score for a bond length (or angle) is the number of standard deviations the observed value is removed from the expected value. A bond length (or angle) with $|Z| > 5$ is considered an outlier worth inspection. RMSZ is the root-mean-square of all Z scores of the bond lengths (or angles).

Mol	Chain	Bond lengths		Bond angles	
		RMSZ	$\# Z > 5$	RMSZ	$\# Z > 5$
1	A	0.43	0/5089	0.63	1/6916 (0.0%)
2	C	0.53	1/2434 (0.0%)	0.69	0/3280
3	M	0.51	0/690	0.66	0/923
4	B	0.69	0/1520	0.85	2/2066 (0.1%)
All	All	0.51	1/9733 (0.0%)	0.68	3/13185 (0.0%)

All (1) bond length outliers are listed below:

Mol	Chain	Res	Type	Atoms	Z	Observed(Å)	Ideal(Å)
2	C	1496	CYS	CB-SG	5.87	1.92	1.82

All (3) bond angle outliers are listed below:

Mol	Chain	Res	Type	Atoms	Z	Observed(°)	Ideal(°)
1	A	535	ASP	CB-CA-C	-5.97	98.46	110.40
4	B	866	ILE	CB-CA-C	-5.16	101.28	111.60
4	B	730	ASP	N-CA-C	-5.13	97.14	111.00

There are no chirality outliers.

There are no planarity outliers.

5.2 Too-close contacts [i](#)

In the following table, the Non-H and H(model) columns list the number of non-hydrogen atoms and hydrogen atoms in the chain respectively. The H(added) column lists the number of hydrogen atoms added and optimized by MolProbity. The Clashes column lists the number of clashes within the asymmetric unit, whereas Symm-Clashes lists symmetry related clashes.

Mol	Chain	Non-H	H(model)	H(added)	Clashes	Symm-Clashes
1	A	4989	0	5052	464	0
2	C	2388	0	2295	247	0
3	M	682	0	697	55	0
4	B	1488	0	1513	208	0
5	A	14	0	13	4	0
All	All	9561	0	9570	924	0

The all-atom clashscore is defined as the number of clashes found per 1000 atoms (including hydrogen atoms). The all-atom clashscore for this structure is 48.

The worst 5 of 924 close contacts within the same asymmetric unit are listed below, sorted by their clash magnitude.

Atom-1	Atom-2	Interatomic distance (Å)	Clash overlap (Å)
1:A:280:LEU:CD2	1:A:285:LEU:HD11	1.33	1.56
1:A:230:GLU:HA	1:A:279:VAL:CG1	1.37	1.50
4:B:811:LEU:CD1	4:B:813:LEU:HD22	1.56	1.36
1:A:280:LEU:HD21	1:A:285:LEU:CD1	1.55	1.34
1:A:290:GLN:NE2	1:A:292:PRO:HG3	1.53	1.21

There are no symmetry-related clashes.

5.3 Torsion angles [i](#)

5.3.1 Protein backbone [i](#)

In the following table, the Percentiles column shows the percent Ramachandran outliers of the chain as a percentile score with respect to all X-ray entries followed by that with respect to entries of similar resolution.

The Analysed column shows the number of residues for which the backbone conformation was analysed, and the total number of residues.

Mol	Chain	Analysed	Favoured	Allowed	Outliers	Percentiles	
1	A	637/645 (99%)	545 (86%)	73 (12%)	19 (3%)	5	39
2	C	288/343 (84%)	232 (81%)	39 (14%)	17 (6%)	2	25
3	M	82/88 (93%)	56 (68%)	22 (27%)	4 (5%)	2	28
4	B	182/206 (88%)	145 (80%)	28 (15%)	9 (5%)	2	28
All	All	1189/1282 (93%)	978 (82%)	162 (14%)	49 (4%)	3	32

5 of 49 Ramachandran outliers are listed below:

Mol	Chain	Res	Type
1	A	286	LEU
1	A	290	GLN
1	A	293	ARG
1	A	294	ALA
1	A	295	GLU

5.3.2 Protein sidechains ⓘ

In the following table, the Percentiles column shows the percent sidechain outliers of the chain as a percentile score with respect to all X-ray entries followed by that with respect to entries of similar resolution.

The Analysed column shows the number of residues for which the sidechain conformation was analysed, and the total number of residues.

Mol	Chain	Analysed	Rotameric	Outliers	Percentiles	
1	A	563/567 (99%)	523 (93%)	40 (7%)	17	53
2	C	267/309 (86%)	219 (82%)	48 (18%)	2	15
3	M	76/79 (96%)	66 (87%)	10 (13%)	5	27
4	B	172/191 (90%)	134 (78%)	38 (22%)	1	8
All	All	1078/1146 (94%)	942 (87%)	136 (13%)	5	29

5 of 136 residues with a non-rotameric sidechain are listed below:

Mol	Chain	Res	Type
2	C	1447	VAL
2	C	1536	PHE
4	B	844	LEU
2	C	1465	GLU
2	C	1495	ASN

Some sidechains can be flipped to improve hydrogen bonding and reduce clashes. 5 of 7 such sidechains are listed below:

Mol	Chain	Res	Type
1	A	552	GLN
4	B	897	HIS
2	C	1579	HIS
1	A	290	GLN
3	M	17	ASN

5.3.3 RNA ⓘ

There are no RNA molecules in this entry.

5.4 Non-standard residues in protein, DNA, RNA chains ⓘ

There are no non-standard protein/DNA/RNA residues in this entry.

5.5 Carbohydrates ⓘ

There are no carbohydrates in this entry.

5.6 Ligand geometry ⓘ

1 ligand is modelled in this entry.

In the following table, the Counts columns list the number of bonds (or angles) for which Mogul statistics could be retrieved, the number of bonds (or angles) that are observed in the model and the number of bonds (or angles) that are defined in the Chemical Component Dictionary. The Link column lists molecule types, if any, to which the group is linked. The Z score for a bond length (or angle) is the number of standard deviations the observed value is removed from the expected value. A bond length (or angle) with $|Z| > 2$ is considered an outlier worth inspection. RMSZ is the root-mean-square of all Z scores of the bond lengths (or angles).

Mol	Type	Chain	Res	Link	Bond lengths			Bond angles		
					Counts	RMSZ	$\# Z > 2$	Counts	RMSZ	$\# Z > 2$
5	NAG	A	646	-	14,14,15	0.46	0	15,19,21	1.49	1 (6%)

In the following table, the Chirals column lists the number of chiral outliers, the number of chiral centers analysed, the number of these observed in the model and the number defined in the Chemical Component Dictionary. Similar counts are reported in the Torsion and Rings columns. '-' means no outliers of that kind were identified.

Mol	Type	Chain	Res	Link	Chirals	Torsions	Rings
5	NAG	A	646	-	-	0/6/23/26	0/1/1/1

There are no bond length outliers.

All (1) bond angle outliers are listed below:

Mol	Chain	Res	Type	Atoms	Z	Observed(°)	Ideal(°)
5	A	646	NAG	C1-O5-C5	4.84	118.83	112.17

There are no chirality outliers.

There are no torsion outliers.

There are no ring outliers.

1 monomer is involved in 4 short contacts:

Mol	Chain	Res	Type	Clashes	Symm-Clashes
5	A	646	NAG	4	0

5.7 Other polymers [i](#)

There are no such residues in this entry.

5.8 Polymer linkage issues [i](#)

There are no chain breaks in this entry.

6 Fit of model and data [i](#)

6.1 Protein, DNA and RNA chains [i](#)

In the following table, the column labelled ‘#RSRZ> 2’ contains the number (and percentage) of RSRZ outliers, followed by percent RSRZ outliers for the chain as percentile scores relative to all X-ray entries and entries of similar resolution. The OWAB column contains the minimum, median, 95th percentile and maximum values of the occupancy-weighted average B-factor per residue. The column labelled ‘Q< 0.9’ lists the number of (and percentage) of residues with an average occupancy less than 0.9.

Mol	Chain	Analysed	<RSRZ>	#RSRZ>2	OWAB(Å ²)	Q<0.9
1	A	641/645 (99%)	-0.16	5 (0%) 86 79	26, 151, 213, 245	0
2	C	294/343 (85%)	0.11	10 (3%) 46 36	118, 187, 274, 305	0
3	M	84/88 (95%)	-0.20	1 (1%) 79 71	121, 146, 199, 261	0
4	B	184/206 (89%)	-0.30	0 100 100	99, 130, 161, 183	0
All	All	1203/1282 (93%)	-0.12	16 (1%) 77 68	26, 151, 238, 305	0

The worst 5 of 16 RSRZ outliers are listed below:

Mol	Chain	Res	Type	RSRZ
3	M	2	THR	3.7
1	A	408	GLU	3.2
2	C	1487	GLU	3.1
2	C	1454	ALA	3.0
1	A	517	GLY	2.6

6.2 Non-standard residues in protein, DNA, RNA chains [i](#)

There are no non-standard protein/DNA/RNA residues in this entry.

6.3 Carbohydrates [i](#)

There are no carbohydrates in this entry.

6.4 Ligands [i](#)

In the following table, the Atoms column lists the number of modelled atoms in the group and the number defined in the chemical component dictionary. LLDF column lists the quality of electron density of the group with respect to its neighbouring residues in protein, DNA or RNA chains. The B-factors column lists the minimum, median, 95th percentile and maximum values of B factors

of atoms in the group. The column labelled 'Q< 0.9' lists the number of atoms with occupancy less than 0.9.

Mol	Type	Chain	Res	Atoms	RSCC	RSR	LLDF	B-factors(\AA^2)	Q<0.9
5	NAG	A	646	14/15	0.83	0.53	-	159,175,186,189	0

6.5 Other polymers [i](#)

There are no such residues in this entry.