



Full wwPDB X-ray Structure Validation Report ⓘ

Feb 12, 2017 – 07:08 pm GMT

PDB ID : 365D
Title : STRUCTURAL BASIS FOR G C RECOGNITION IN THE DNA MINOR GROOVE
Authors : Kielkopf, C.L.; Baird, E.E.; Dervan, P.B.; Rees, D.C.
Deposited on : 1997-12-17
Resolution : 2.00 Å(reported)

This is a Full wwPDB X-ray Structure Validation Report for a publicly released PDB entry.

We welcome your comments at validation@mail.wwpdb.org

A user guide is available at

<http://wwpdb.org/validation/2016/XrayValidationReportHelp>

with specific help available everywhere you see the ⓘ symbol.

The following versions of software and data (see [references ⓘ](#)) were used in the production of this report:

MolProbity : 4.02b-467
Mogul : 1.7.2 (RC1), CSD as538be (2017)
Xtriage (Phenix) : **NOT EXECUTED**
EDS : **NOT EXECUTED**
Percentile statistics : 20161228.v01 (using entries in the PDB archive December 28th 2016)
Ideal geometry (proteins) : Engh & Huber (2001)
Ideal geometry (DNA, RNA) : Parkinson et al. (1996)
Validation Pipeline (wwPDB-VP) : recalc28949

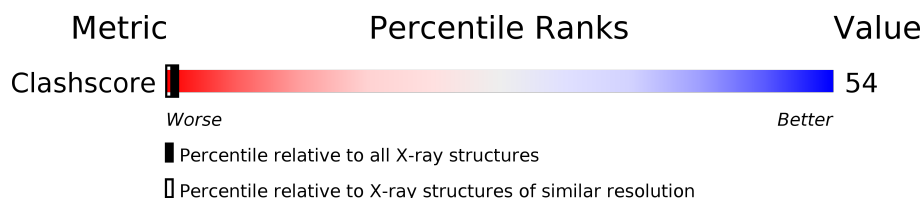
1 Overall quality at a glance

The following experimental techniques were used to determine the structure:

X-RAY DIFFRACTION

The reported resolution of this entry is 2.00 Å.



Percentile scores (ranging between 0-100) for global validation metrics of the entry are shown in the following graphic. The table shows the number of entries on which the scores are based.



Metric	Whole archive (#Entries)	Similar resolution (#Entries, resolution range(Å))
Clashscore	112137	7775 (2.00-2.00)

The table below summarises the geometric issues observed across the polymeric chains and their fit to the electron density. The red, orange, yellow and green segments on the lower bar indicate the fraction of residues that contain outliers for ≥ 3 , 2, 1 and 0 types of geometric quality criteria. A grey segment represents the fraction of residues that are not modelled. The numeric value for each fraction is indicated below the corresponding segment, with a dot representing fractions $\leq 5\%$. The upper red bar (where present) indicates the fraction of residues that have poor fit to the electron density. The numeric value is given above the bar.

Note EDS was not executed.

Mol	Chain	Length	Quality of chain
1	A	10	
1	B	10	

2 Entry composition [i](#)

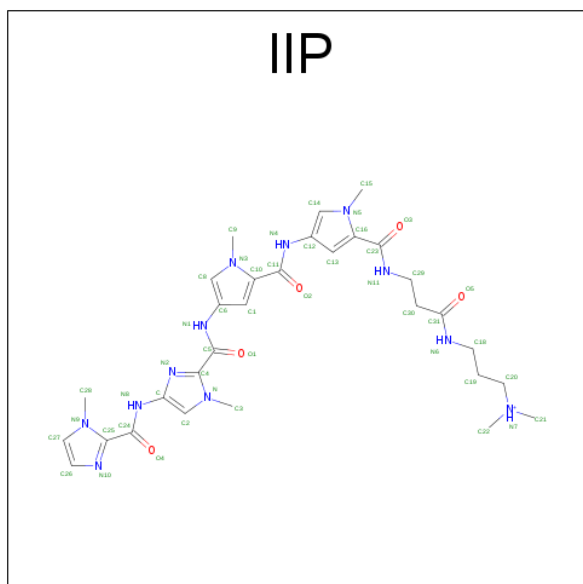
There are 3 unique types of molecules in this entry. The entry contains 573 atoms, of which 0 are hydrogens and 0 are deuteriums.

In the tables below, the ZeroOcc column contains the number of atoms modelled with zero occupancy, the AltConf column contains the number of residues with at least one atom in alternate conformation and the Trace column contains the number of residues modelled with at most 2 atoms.

- Molecule 1 is a DNA chain called DNA (5'-D(*CP*CP*AP*GP*GP*(CBR)P*CP*TP*GP*G)-3').

Mol	Chain	Residues	Atoms						ZeroOcc	AltConf	Trace
1	A	10	Total	Br	C	N	O	P	0	0	0
			203	1	96	39	58	9			
1	B	10	Total	Br	C	N	O	P	0	0	0
			203	1	96	39	58	9			

- Molecule 2 is IMIDAZOLE-PYRROLE POLYAMIDE (three-letter code: IIP) (formula: C₃₀H₄₁N₁₂O₅).



Mol	Chain	Residues	Atoms				ZeroOcc	AltConf
2	B	1	Total	C	N	O	0	0
			47	30	12	5		
2	A	1	Total	C	N	O	0	1
			49	31	12	6		

- Molecule 3 is water.


Mol	Chain	Residues	Atoms		ZeroOcc	AltConf
3	A	43	Total 43	O 43	0	0
3	B	28	Total 28	O 28	0	0

3 Residue-property plots

These plots are drawn for all protein, RNA and DNA chains in the entry. The first graphic for a chain summarises the proportions of the various outlier classes displayed in the second graphic. The second graphic shows the sequence view annotated by issues in geometry and electron density. Residues are color-coded according to the number of geometric quality criteria for which they contain at least one outlier: green = 0, yellow = 1, orange = 2 and red = 3 or more. A red dot above a residue indicates a poor fit to the electron density ($RSRZ > 2$). Stretches of 2 or more consecutive residues without any outlier are shown as a green connector. Residues present in the sample, but not in the model, are shown in grey.

Note EDS was not executed.

- Molecule 1: DNA (5'-D(*CP*CP*AP*GP*GP*(CBR)P*CP*TP*GP*G)-3')

Chain A: 



- Molecule 1: DNA (5'-D(*CP*CP*AP*GP*GP*(CBR)P*CP*TP*GP*G)-3')

Chain B: 



4 Data and refinement statistics

Xtriage (Phenix) and EDS were not executed - this section is therefore incomplete.

Property	Value	Source
Space group	P 21 21 21	Depositor
Cell constants a, b, c, α , β , γ	34.40 Å 38.96 Å 44.42 Å 90.00° 90.00° 90.00°	Depositor
Resolution (Å)	18.00 – 2.00	Depositor
% Data completeness (in resolution range)	91.2 (18.00-2.00)	Depositor
R_{merge}	0.03	Depositor
R_{sym}	(Not available)	Depositor
Refinement program	X-PLOR 3.857	Depositor
R, R_{free}	0.222 , 0.260	Depositor
Estimated twinning fraction	No twinning to report.	Xtriage
Total number of atoms	573	wwPDB-VP
Average B, all atoms (Å ²)	45.0	wwPDB-VP

5 Model quality

5.1 Standard geometry

Bond lengths and bond angles in the following residue types are not validated in this section: CBR, IIP

The Z score for a bond length (or angle) is the number of standard deviations the observed value is removed from the expected value. A bond length (or angle) with $|Z| > 5$ is considered an outlier worth inspection. RMSZ is the root-mean-square of all Z scores of the bond lengths (or angles).

Mol	Chain	Bond lengths		Bond angles	
		RMSZ	$\# Z > 5$	RMSZ	$\# Z > 5$
1	A	2.62	12/205 (5.9%)	1.78	5/315 (1.6%)
1	B	2.72	17/205 (8.3%)	1.90	5/315 (1.6%)
All	All	2.67	29/410 (7.1%)	1.84	10/630 (1.6%)

Chiral center outliers are detected by calculating the chiral volume of a chiral center and verifying if the center is modelled as a planar moiety or with the opposite hand. A planarity outlier is detected by checking planarity of atoms in a peptide group, atoms in a mainchain group or atoms of a sidechain that are expected to be planar.

Mol	Chain	#Chirality outliers	#Planarity outliers
1	B	0	1

All (29) bond length outliers are listed below:

Mol	Chain	Res	Type	Atoms	Z	Observed(Å)	Ideal(Å)
1	B	14	DG	N3-C4	10.90	1.43	1.35
1	A	9	DG	N3-C4	-10.41	1.28	1.35
1	A	1	DC	N1-C2	-8.48	1.31	1.40
1	B	14	DG	N7-C5	8.20	1.44	1.39
1	B	12	DC	C2-O2	-8.14	1.17	1.24
1	A	9	DG	C5-C6	-8.00	1.34	1.42
1	A	9	DG	C2-N3	-7.50	1.26	1.32
1	A	10	DG	C6-O6	-7.45	1.17	1.24
1	B	13	DA	C5-C6	7.18	1.47	1.41
1	B	14	DG	C6-N1	7.13	1.44	1.39
1	A	5	DG	N3-C4	-6.91	1.30	1.35
1	B	17	DC	C2-O2	-6.87	1.18	1.24
1	A	5	DG	N1-C2	-6.36	1.32	1.37
1	A	9	DG	C6-N1	-6.26	1.35	1.39
1	B	12	DC	N1-C2	-5.98	1.34	1.40
1	B	20	DG	C6-O6	5.82	1.29	1.24

Continued on next page...

Continued from previous page...

Mol	Chain	Res	Type	Atoms	Z	Observed(Å)	Ideal(Å)
1	B	13	DA	C2-N3	5.76	1.38	1.33
1	B	13	DA	N1-C2	5.74	1.39	1.34
1	B	15	DG	C6-O6	-5.74	1.19	1.24
1	B	19	DG	C2-N2	-5.73	1.28	1.34
1	A	7	DC	C4-C5	-5.56	1.38	1.43
1	B	17	DC	C4-N4	-5.42	1.29	1.33
1	B	20	DG	C2-N2	-5.37	1.29	1.34
1	A	10	DG	C2-N2	-5.35	1.29	1.34
1	B	15	DG	N1-C2	-5.29	1.33	1.37
1	B	20	DG	C2-N3	-5.27	1.28	1.32
1	B	11	DC	C2'-C1'	-5.24	1.47	1.52
1	A	4	DG	C5-C4	-5.23	1.34	1.38
1	A	1	DC	C4-N4	5.17	1.38	1.33

All (10) bond angle outliers are listed below:

Mol	Chain	Res	Type	Atoms	Z	Observed(°)	Ideal(°)
1	A	10	DG	N3-C2-N2	-6.53	115.33	119.90
1	B	19	DG	C8-N9-C4	-6.06	103.97	106.40
1	B	14	DG	N9-C4-C5	6.01	107.80	105.40
1	A	1	DC	N1-C2-O2	-5.53	115.58	118.90
1	A	9	DG	N3-C2-N2	-5.52	116.04	119.90
1	B	19	DG	N9-C4-C5	5.23	107.49	105.40
1	B	14	DG	C8-N9-C4	-5.19	104.32	106.40
1	A	4	DG	OP1-P-O3'	5.16	116.56	105.20
1	A	5	DG	O4'-C1'-N9	-5.10	104.43	108.00
1	B	20	DG	C1'-O4'-C4'	-5.05	105.05	110.10

There are no chirality outliers.

All (1) planarity outliers are listed below:

Mol	Chain	Res	Type	Group
1	B	15	DG	Sidechain

5.2 Too-close contacts ⓘ

In the following table, the Non-H and H(model) columns list the number of non-hydrogen atoms and hydrogen atoms in the chain respectively. The H(added) column lists the number of hydrogen atoms added and optimized by MolProbity. The Clashes column lists the number of clashes within the asymmetric unit, whereas Symm-Clashes lists symmetry related clashes.

Mol	Chain	Non-H	H(model)	H(added)	Clashes	Symm-Clashes
1	A	203	0	110	7	0
1	B	203	0	106	13	0
2	A	49	0	5	2	0
2	B	47	0	41	10	0
3	A	43	0	0	18	1
3	B	28	0	0	12	1
All	All	573	0	262	42	1

The all-atom clashscore is defined as the number of clashes found per 1000 atoms (including hydrogen atoms). The all-atom clashscore for this structure is 54.

All (42) close contacts within the same asymmetric unit are listed below, sorted by their clash magnitude.

Atom-1	Atom-2	Interatomic distance (Å)	Clash overlap (Å)
2:B:21:IIP:H212	3:B:82:HOH:O	1.29	1.27
3:A:92:HOH:O	2:B:21:IIP:H152	1.40	1.21
1:B:11:DC:H3'	3:B:84:HOH:O	1.51	1.10
3:A:74:HOH:O	2:B:21:IIP:H302	1.56	1.05
1:B:11:DC:C5	3:B:87:HOH:O	2.17	0.97
3:A:92:HOH:O	2:B:21:IIP:C15	2.01	0.92
1:B:12:DC:OP2	3:B:84:HOH:O	1.93	0.85
2:B:21:IIP:H191	3:B:82:HOH:O	1.78	0.83
2:A:22[B]:IIP:O5	3:A:52:HOH:O	2.01	0.79
1:A:6:CBR:H2''	1:A:7:DC:H5''	1.66	0.77
1:B:16:CBR:H6	3:B:42:HOH:O	1.85	0.76
1:B:16:CBR:H2''	1:B:17:DC:H5''	1.71	0.72
1:B:15:DG:OP2	3:B:33:HOH:O	2.17	0.56
1:B:11:DC:C3'	3:B:84:HOH:O	2.29	0.55
2:B:21:IIP:H31	2:B:21:IIP:O1	2.11	0.51
2:B:21:IIP:H211	3:B:81:HOH:O	2.13	0.48
1:B:17:DC:H5'	3:B:65:HOH:O	2.13	0.47
2:B:21:IIP:C21	3:B:81:HOH:O	2.63	0.46
1:A:3:DA:P	3:A:75:HOH:O	2.74	0.45
2:A:22[B]:IIP:C31	3:A:52:HOH:O	2.60	0.44
1:B:17:DC:H2''	1:B:18:DT:C5'	2.48	0.43
1:B:17:DC:H2''	1:B:18:DT:O5'	2.19	0.43
2:B:21:IIP:H8	2:B:21:IIP:O1	2.18	0.43
1:A:6:CBR:N4	1:B:14:DG:C6	2.88	0.42
1:B:12:DC:H2'	3:B:85:HOH:O	2.19	0.42
1:B:16:CBR:H4'	2:B:21:IIP:C2	2.51	0.40

All (1) symmetry-related close contacts are listed below. The label for Atom-2 includes the sym-

metry operator and encoded unit-cell translations to be applied.

Atom-1	Atom-2	Interatomic distance (Å)	Clash overlap (Å)
3:A:61:HOH:O	3:B:81:HOH:O[4_445]	2.00	0.20

5.3 Torsion angles [i](#)

5.3.1 Protein backbone [i](#)

There are no protein molecules in this entry.

5.3.2 Protein sidechains [i](#)

There are no protein molecules in this entry.

5.3.3 RNA [i](#)

There are no RNA molecules in this entry.

5.4 Non-standard residues in protein, DNA, RNA chains [i](#)

2 non-standard protein/DNA/RNA residues are modelled in this entry.

In the following table, the Counts columns list the number of bonds (or angles) for which Mogul statistics could be retrieved, the number of bonds (or angles) that are observed in the model and the number of bonds (or angles) that are defined in the chemical component dictionary. The Link column lists molecule types, if any, to which the group is linked. The Z score for a bond length (or angle) is the number of standard deviations the observed value is removed from the expected value. A bond length (or angle) with $|Z| > 2$ is considered an outlier worth inspection. RMSZ is the root-mean-square of all Z scores of the bond lengths (or angles).

Mol	Type	Chain	Res	Link	Bond lengths			Bond angles		
					Counts	RMSZ	$\# Z > 2$	Counts	RMSZ	$\# Z > 2$
1	CBR	A	6	1	13,21,22	1.53	3 (23%)	15,30,33	0.96	1 (6%)
1	CBR	B	16	1	13,21,22	1.69	2 (15%)	15,30,33	1.61	1 (6%)

In the following table, the Chirals column lists the number of chiral outliers, the number of chiral centers analysed, the number of these observed in the model and the number defined in the chemical component dictionary. Similar counts are reported in the Torsion and Rings columns. '-' means no outliers of that kind were identified.

Mol	Type	Chain	Res	Link	Chirals	Torsions	Rings
1	CBR	A	6	1	-	0/3/21/22	0/2/2/2
1	CBR	B	16	1	-	0/3/21/22	0/2/2/2

All (5) bond length outliers are listed below:

Mol	Chain	Res	Type	Atoms	Z	Observed(Å)	Ideal(Å)
1	B	16	CBR	C2-N3	-4.00	1.30	1.38
1	B	16	CBR	O5'-C5'	-3.23	1.40	1.44
1	A	6	CBR	C2-N3	-2.62	1.33	1.38
1	A	6	CBR	O5'-C5'	-2.00	1.42	1.44
1	A	6	CBR	C4-C5	3.07	1.47	1.41

All (2) bond angle outliers are listed below:

Mol	Chain	Res	Type	Atoms	Z	Observed(°)	Ideal(°)
1	B	16	CBR	C5-C4-N4	-5.74	118.00	122.94
1	A	6	CBR	C5-C4-N4	-3.24	120.15	122.94

There are no chirality outliers.

There are no torsion outliers.

There are no ring outliers.

2 monomers are involved in 6 short contacts:

Mol	Chain	Res	Type	Clashes	Symm-Clashes
1	A	6	CBR	3	0
1	B	16	CBR	3	0

5.5 Carbohydrates [i](#)

There are no carbohydrates in this entry.

5.6 Ligand geometry [i](#)

3 ligands are modelled in this entry.

In the following table, the Counts columns list the number of bonds (or angles) for which Mogul statistics could be retrieved, the number of bonds (or angles) that are observed in the model and the number of bonds (or angles) that are defined in the chemical component dictionary. The Link column lists molecule types, if any, to which the group is linked. The Z score for a bond length (or angle) is the number of standard deviations the observed value is removed from the expected

value. A bond length (or angle) with $|Z| > 2$ is considered an outlier worth inspection. RMSZ is the root-mean-square of all Z scores of the bond lengths (or angles).

Mol	Type	Chain	Res	Link	Bond lengths			Bond angles		
					Counts	RMSZ	# $ Z > 2$	Counts	RMSZ	# $ Z > 2$
2	IIP	A	22[A]	-	42,50,50	2.90	17 (40%)	43,70,70	2.91	15 (34%)
2	IIP	A	22[B]	-	42,50,50	2.89	18 (42%)	43,70,70	2.98	15 (34%)
2	IIP	B	21	-	42,50,50	3.65	15 (35%)	43,70,70	2.41	11 (25%)

In the following table, the Chirals column lists the number of chiral outliers, the number of chiral centers analysed, the number of these observed in the model and the number defined in the chemical component dictionary. Similar counts are reported in the Torsion and Rings columns. '-' means no outliers of that kind were identified.

Mol	Type	Chain	Res	Link	Chirals	Torsions	Rings
2	IIP	A	22[A]	-	-	0/21/41/41	0/4/4/4
2	IIP	A	22[B]	-	-	0/21/41/41	0/4/4/4
2	IIP	B	21	-	-	0/21/41/41	0/4/4/4

All (50) bond length outliers are listed below:

Mol	Chain	Res	Type	Atoms	Z	Observed(Å)	Ideal(Å)
2	B	21	IIP	C4-C5	-14.41	1.43	1.53
2	B	21	IIP	C25-C24	-12.96	1.44	1.53
2	A	22[A]	IIP	C25-C24	-9.60	1.46	1.53
2	A	22[B]	IIP	C25-C24	-9.60	1.46	1.53
2	A	22[A]	IIP	C4-C5	-5.63	1.49	1.53
2	A	22[B]	IIP	C4-C5	-5.63	1.49	1.53
2	B	21	IIP	C1-C6	-4.29	1.35	1.39
2	A	22[A]	IIP	C1-C6	-4.25	1.35	1.39
2	A	22[B]	IIP	C1-C6	-4.25	1.35	1.39
2	B	21	IIP	O5-C31	-3.23	1.16	1.23
2	B	21	IIP	C1-C10	-3.10	1.35	1.39
2	B	21	IIP	C29-C30	-2.93	1.41	1.51
2	B	21	IIP	C29-N11	-2.33	1.40	1.46
2	A	22[B]	IIP	O5-C31	-2.31	1.18	1.23
2	B	21	IIP	C27-N9	-2.29	1.33	1.37
2	A	22[A]	IIP	C27-N9	-2.17	1.34	1.37
2	A	22[B]	IIP	C27-N9	-2.17	1.34	1.37
2	B	21	IIP	O3-C23	2.03	1.27	1.23
2	B	21	IIP	C2-C	2.07	1.39	1.36
2	B	21	IIP	C14-C12	2.19	1.41	1.37
2	A	22[A]	IIP	C5-N1	2.23	1.41	1.35
2	A	22[B]	IIP	C5-N1	2.23	1.41	1.35

Continued on next page...

Continued from previous page...

Mol	Chain	Res	Type	Atoms	Z	Observed(Å)	Ideal(Å)
2	A	22[A]	IIP	C20-N7	2.24	1.54	1.46
2	A	22[B]	IIP	C20-N7	2.24	1.54	1.46
2	A	22[A]	IIP	O1-C5	2.43	1.28	1.23
2	A	22[B]	IIP	O1-C5	2.43	1.28	1.23
2	A	22[A]	IIP	C23-N11	2.52	1.39	1.33
2	A	22[B]	IIP	C23-N11	2.52	1.39	1.33
2	A	22[A]	IIP	O4-C24	2.58	1.28	1.23
2	A	22[B]	IIP	O4-C24	2.58	1.28	1.23
2	A	22[A]	IIP	C14-C12	2.87	1.42	1.37
2	A	22[B]	IIP	C14-C12	2.87	1.42	1.37
2	A	22[A]	IIP	C15-N5	2.88	1.53	1.47
2	A	22[B]	IIP	C15-N5	2.88	1.53	1.47
2	B	21	IIP	O4-C24	2.93	1.29	1.23
2	B	21	IIP	C4-N2	3.87	1.39	1.34
2	A	22[A]	IIP	C13-C16	3.88	1.44	1.39
2	A	22[B]	IIP	C13-C16	3.88	1.44	1.39
2	A	22[A]	IIP	C1-C10	4.30	1.44	1.39
2	A	22[B]	IIP	C1-C10	4.30	1.44	1.39
2	A	22[A]	IIP	C8-C6	4.36	1.45	1.37
2	A	22[B]	IIP	C8-C6	4.36	1.45	1.37
2	A	22[A]	IIP	O3-C23	4.43	1.32	1.23
2	A	22[B]	IIP	O3-C23	4.43	1.32	1.23
2	A	22[A]	IIP	C13-C12	4.56	1.43	1.39
2	A	22[B]	IIP	C13-C12	4.56	1.43	1.39
2	A	22[A]	IIP	C3-N	4.63	1.57	1.47
2	A	22[B]	IIP	C3-N	4.63	1.57	1.47
2	B	21	IIP	O2-C11	5.29	1.34	1.23
2	B	21	IIP	C9-N3	6.18	1.60	1.47

All (41) bond angle outliers are listed below:

Mol	Chain	Res	Type	Atoms	Z	Observed(°)	Ideal(°)
2	A	22[B]	IIP	O5-C31-C30	-4.98	112.65	122.01
2	A	22[A]	IIP	C8-N3-C10	-4.87	103.25	108.71
2	A	22[B]	IIP	C8-N3-C10	-4.87	103.25	108.71
2	B	21	IIP	O1-C5-C4	-4.59	113.98	120.37
2	B	21	IIP	C2-N-C4	-4.02	104.26	108.60
2	B	21	IIP	C8-N3-C10	-3.82	104.42	108.71
2	A	22[A]	IIP	C14-N5-C16	-3.69	104.57	108.71
2	A	22[B]	IIP	C14-N5-C16	-3.69	104.57	108.71
2	A	22[A]	IIP	C28-N9-C27	-3.41	118.44	124.89
2	A	22[B]	IIP	C28-N9-C27	-3.41	118.44	124.89

Continued on next page...

Continued from previous page...

Mol	Chain	Res	Type	Atoms	Z	Observed(°)	Ideal(°)
2	A	22[A]	IIP	O1-C5-C4	-3.17	115.95	120.37
2	A	22[B]	IIP	O1-C5-C4	-3.17	115.95	120.37
2	A	22[A]	IIP	O5-C31-N6	-3.15	116.97	122.97
2	B	21	IIP	C27-N9-C25	-3.10	105.03	108.56
2	A	22[A]	IIP	O4-C24-N8	-3.08	116.66	123.69
2	A	22[B]	IIP	O4-C24-N8	-3.08	116.66	123.69
2	A	22[A]	IIP	C2-N-C4	-2.95	105.41	108.60
2	A	22[B]	IIP	C2-N-C4	-2.95	105.41	108.60
2	B	21	IIP	C12-N4-C11	-2.54	120.08	126.61
2	B	21	IIP	O5-C31-C30	-2.40	117.50	122.01
2	A	22[A]	IIP	C29-N11-C23	2.06	126.83	122.11
2	A	22[B]	IIP	C29-N11-C23	2.06	126.83	122.11
2	A	22[A]	IIP	C20-C19-C18	2.29	122.02	113.76
2	A	22[B]	IIP	C20-C19-C18	2.29	122.02	113.76
2	B	21	IIP	C3-N-C4	2.48	129.91	126.39
2	A	22[A]	IIP	C19-C20-N7	2.67	121.02	113.77
2	A	22[B]	IIP	C19-C20-N7	2.67	121.02	113.77
2	B	21	IIP	C19-C20-N7	2.98	121.88	113.77
2	A	22[A]	IIP	C18-N6-C31	2.99	128.59	122.84
2	A	22[A]	IIP	C19-C18-N6	3.23	121.47	112.18
2	A	22[B]	IIP	C19-C18-N6	3.23	121.47	112.18
2	B	21	IIP	C28-N9-C25	4.04	132.12	126.39
2	A	22[A]	IIP	C3-N-C4	4.73	133.09	126.39
2	A	22[B]	IIP	C3-N-C4	4.73	133.09	126.39
2	B	21	IIP	C18-N6-C31	5.16	132.75	122.84
2	A	22[A]	IIP	C28-N9-C25	5.28	133.87	126.39
2	A	22[B]	IIP	C28-N9-C25	5.28	133.87	126.39
2	A	22[B]	IIP	C29-C30-C31	7.30	123.96	112.22
2	B	21	IIP	C29-C30-C31	9.25	127.10	112.22
2	A	22[B]	IIP	C18-N6-C31	10.87	143.71	122.84
2	A	22[A]	IIP	C29-C30-C31	12.60	132.48	112.22

There are no chirality outliers.

There are no torsion outliers.

There are no ring outliers.

2 monomers are involved in 12 short contacts:

Mol	Chain	Res	Type	Clashes	Symm-Clashes
2	A	22[B]	IIP	2	0
2	B	21	IIP	10	0

5.7 Other polymers [i](#)

There are no such residues in this entry.

5.8 Polymer linkage issues [i](#)

There are no chain breaks in this entry.

6 Fit of model and data

6.1 Protein, DNA and RNA chains

EDS was not executed - this section is therefore empty.

6.2 Non-standard residues in protein, DNA, RNA chains

EDS was not executed - this section is therefore empty.

6.3 Carbohydrates

EDS was not executed - this section is therefore empty.

6.4 Ligands

EDS was not executed - this section is therefore empty.

6.5 Other polymers

EDS was not executed - this section is therefore empty.