



Full wwPDB X-ray Structure Validation Report ⓘ

Feb 13, 2017 – 09:31 pm GMT

PDB ID : 5A1T
Title : Trichomonas vaginalis lactate dehydrogenase in complex with NADH and oxamate
Authors : Steindel, P.A.; Chen, E.H.; Theobald, D.L.
Deposited on : 2015-05-05
Resolution : 1.97 Å(reported)

This is a Full wwPDB X-ray Structure Validation Report for a publicly released PDB entry.

We welcome your comments at validation@mail.wwpdb.org

A user guide is available at

<http://wwpdb.org/validation/2016/XrayValidationReportHelp>

with specific help available everywhere you see the ⓘ symbol.

The following versions of software and data (see [references ⓘ](#)) were used in the production of this report:

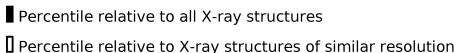
MolProbity	:	4.02b-467
Mogul	:	1.7.2 (RC1), CSD as538be (2017)
Xtriage (Phenix)	:	1.9-1692
EDS	:	trunk28620
Percentile statistics	:	20161228.v01 (using entries in the PDB archive December 28th 2016)
Refmac	:	5.8.0135
CCP4	:	6.5.0
Ideal geometry (proteins)	:	Engh & Huber (2001)
Ideal geometry (DNA, RNA)	:	Parkinson et al. (1996)
Validation Pipeline (wwPDB-VP)	:	recalc28949

i

X-RAY DIFFRACTION

A.

Metric	Percentile Banks	Value
--------	------------------	-------



Metric	Whole archive (#Entries)	Similar resolution (#Entries, resolution range(Å))
R_{free}	100719	9293 (2.00-1.96)
Clashscore	112137	10621 (2.00-1.96)
Ramachandran outliers	110173	10502 (2.00-1.96)
Sidechain outliers	110143	10501 (2.00-1.96)
RSRZ outliers	101464	9395 (2.00-1.96)

Mol	Chain	Length	Quality of chain
1	A	341	<div> <div></div> <div>94%</div> <div></div> </div>
1	B	341	<div> <div>6%</div> <div>93%</div> <div></div> </div>

Mol	Type	Chain	Res	Chirality	Geometry	Clashes	Electron density
3	OXM	A	346	-	-	-	X

2 Entry composition [i](#)

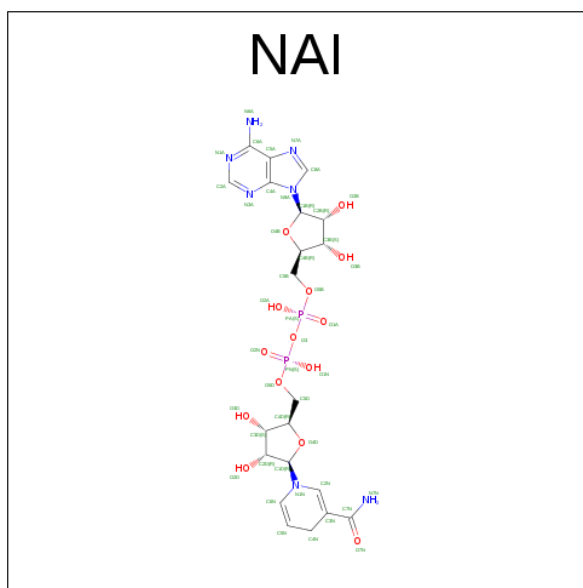
There are 4 unique types of molecules in this entry. The entry contains 11141 atoms, of which 5204 are hydrogens and 0 are deuteriums.

In the tables below, the ZeroOcc column contains the number of atoms modelled with zero occupancy, the AltConf column contains the number of residues with at least one atom in alternate conformation and the Trace column contains the number of residues modelled with at most 2 atoms.

- Molecule 1 is a protein called L-LACTATE DEHYDROGENASE.

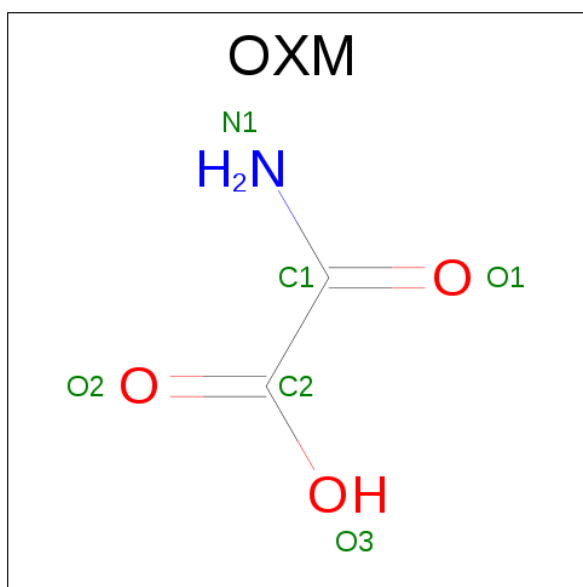
Mol	Chain	Residues	Atoms						ZeroOcc	AltConf	Trace
1	A	331	Total	C	H	N	O	S	0	5	0
			5179	1675	2581	435	476	12			
1	B	328	Total	C	H	N	O	S	0	6	0
			5149	1666	2565	432	473	13			

- Molecule 2 is 1,4-DIHYDRONICOTINAMIDE ADENINE DINUCLEOTIDE (three-letter code: NAI) (formula: $C_{21}H_{29}N_7O_{14}P_2$).



Mol	Chain	Residues	Atoms						ZeroOcc	AltConf
2	A	1	Total	C	H	N	O	P	0	0
			71	21	27	7	14	2		
2	B	1	Total	C	H	N	O	P	0	0
			71	21	27	7	14	2		

- Molecule 3 is OXAMIC ACID (three-letter code: OXM) (formula: $C_2H_3NO_3$).



Mol	Chain	Residues	Atoms					ZeroOcc	AltConf
3	A	1	Total	C	H	N	O	0	0
			8	2	2	1	3		
3	B	1	Total	C	H	N	O	0	0
			8	2	2	1	3		

- Molecule 4 is water.

Mol	Chain	Residues	Atoms		ZeroOcc	AltConf
4	A	403	Total	O	0	0
			403	403		
4	B	252	Total	O	0	0
			252	252		

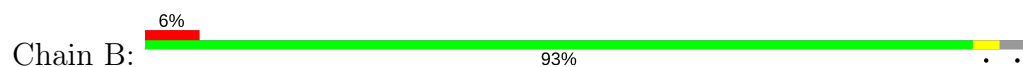
3 Residue-property plots [i](#)

These plots are drawn for all protein, RNA and DNA chains in the entry. The first graphic for a chain summarises the proportions of the various outlier classes displayed in the second graphic. The second graphic shows the sequence view annotated by issues in geometry and electron density. Residues are color-coded according to the number of geometric quality criteria for which they contain at least one outlier: green = 0, yellow = 1, orange = 2 and red = 3 or more. A red dot above a residue indicates a poor fit to the electron density ($RSRZ > 2$). Stretches of 2 or more consecutive residues without any outlier are shown as a green connector. Residues present in the sample, but not in the model, are shown in grey.

● Molecule 1: L-LACTATE DEHYDROGENASE



● Molecule 1: L-LACTATE DEHYDROGENASE



4 Data and refinement statistics

Property	Value	Source
Space group	P 2 21 21	Depositor
Cell constants a, b, c, α , β , γ	80.12Å 82.68Å 114.25Å 90.00° 90.00° 90.00°	Depositor
Resolution (Å)	47.00 – 1.97 47.00 – 1.97	Depositor EDS
% Data completeness (in resolution range)	71.5 (47.00-1.97) 71.6 (47.00-1.97)	Depositor EDS
R_{merge}	0.02	Depositor
R_{sym}	(Not available)	Depositor
$\langle I/\sigma(I) \rangle$ ¹	1.06 (at 1.97Å)	Xtriage
Refinement program	PHENIX (PHENIX.REFINE)	Depositor
R, R_{free}	0.201 , 0.250 0.201 , 0.250	Depositor DCC
R_{free} test set	1936 reflections (4.98%)	DCC
Wilson B-factor (Å ²)	20.3	Xtriage
Anisotropy	0.221	Xtriage
Bulk solvent k_{sol} (e/Å ³), B_{sol} (Å ²)	0.40 , 42.0	EDS
L-test for twinning ²	$\langle L \rangle = 0.46$, $\langle L^2 \rangle = 0.29$	Xtriage
Estimated twinning fraction	0.028 for k,h,-l	Xtriage
F_o, F_c correlation	0.92	EDS
Total number of atoms	11141	wwPDB-VP
Average B, all atoms (Å ²)	26.0	wwPDB-VP

Xtriage's analysis on translational NCS is as follows: *The analyses of the Patterson function reveals a significant off-origin peak that is 21.95 % of the origin peak, indicating pseudo translational symmetry. The chance of finding a peak of this or larger height randomly in a structure without pseudo translational symmetry is equal to 6.3068e-03. The detected translational NCS is most likely also responsible for the elevated intensity ratio.*

¹Intensities estimated from amplitudes.

²Theoretical values of $\langle |L| \rangle$, $\langle L^2 \rangle$ for acentric reflections are 0.5, 0.333 respectively for untwinned datasets, and 0.375, 0.2 for perfectly twinned datasets.

5 Model quality ⓘ

5.1 Standard geometry ⓘ

Bond lengths and bond angles in the following residue types are not validated in this section: OXM, NAI

The Z score for a bond length (or angle) is the number of standard deviations the observed value is removed from the expected value. A bond length (or angle) with $|Z| > 5$ is considered an outlier worth inspection. RMSZ is the root-mean-square of all Z scores of the bond lengths (or angles).

Mol	Chain	Bond lengths		Bond angles	
		RMSZ	$\# Z > 5$	RMSZ	$\# Z > 5$
1	A	0.22	0/2689	0.38	0/3653
1	B	0.22	0/2677	0.37	0/3635
All	All	0.22	0/5366	0.37	0/7288

There are no bond length outliers.

There are no bond angle outliers.

There are no chirality outliers.

There are no planarity outliers.

5.2 Too-close contacts ⓘ

In the following table, the Non-H and H(model) columns list the number of non-hydrogen atoms and hydrogen atoms in the chain respectively. The H(added) column lists the number of hydrogen atoms added and optimized by MolProbity. The Clashes column lists the number of clashes within the asymmetric unit, whereas Symm-Clashes lists symmetry related clashes.

Mol	Chain	Non-H	H(model)	H(added)	Clashes	Symm-Clashes
1	A	2598	2581	2554	9	0
1	B	2584	2565	2542	7	1
2	A	44	27	27	1	0
2	B	44	27	27	1	0
3	A	6	2	2	0	0
3	B	6	2	2	0	0
4	A	403	0	0	11	5
4	B	252	0	0	7	1
All	All	5937	5204	5154	19	5

The all-atom clashscore is defined as the number of clashes found per 1000 atoms (including hydrogen atoms). The all-atom clashscore for this structure is 2.

All (19) close contacts within the same asymmetric unit are listed below, sorted by their clash magnitude.

Atom-1	Atom-2	Interatomic distance (Å)	Clash overlap (Å)
1:A:237:GLY:O	4:A:2300:HOH:O	2.04	0.76
1:B:231:ASP:OD2	4:B:2193:HOH:O	2.11	0.68
1:B:197:ALA:N	4:B:2159:HOH:O	2.26	0.67
1:A:270:PRO:O	4:A:2322:HOH:O	2.12	0.67
1:B:95:GLN:OE1	4:B:2090:HOH:O	2.13	0.67
1:A:333:GLN:NE2	4:A:2395:HOH:O	2.30	0.63
1:A:290:ASN:ND2	4:A:2337:HOH:O	2.31	0.63
1:A:144:LYS:O	4:A:2197:HOH:O	2.16	0.60
1:A:275:ASN:N	4:A:2330:HOH:O	2.33	0.60
1:B:179:ASP:OD2	4:B:2161:HOH:O	2.17	0.57
1:A:207:LYS:NZ	4:A:2266:HOH:O	2.38	0.55
1:B:48:ARG:NH1	4:B:2047:HOH:O	2.30	0.55
1:B:179:ASP:OD2	4:B:2162:HOH:O	2.19	0.54
1:A:95:GLN:OE1	4:A:2112:HOH:O	2.20	0.47
2:A:345:NAI:N1A	4:A:2399:HOH:O	2.36	0.46
1:A:273:GLU:N	4:A:2325:HOH:O	2.33	0.44
2:B:345:NAI:N1A	4:B:2243:HOH:O	2.37	0.42
1:B:89:MET:HB3	1:B:90:PRO:HD2	2.04	0.40

All (5) symmetry-related close contacts are listed below. The label for Atom-2 includes the symmetry operator and encoded unit-cell translations to be applied.

Atom-1	Atom-2	Interatomic distance (Å)	Clash overlap (Å)
4:A:2123:HOH:O	4:B:2033:HOH:O[2_555]	1.87	0.33
4:A:2080:HOH:O	4:A:2214:HOH:O[2_555]	2.10	0.10
1:B:301:GLU:OE1	4:A:2395:HOH:O[3_544]	2.12	0.08
4:A:2077:HOH:O	4:A:2377:HOH:O[3_544]	2.16	0.04
4:A:2039:HOH:O	4:A:2223:HOH:O[2_555]	2.19	0.01

5.3 Torsion angles ⓘ

5.3.1 Protein backbone ⓘ

In the following table, the Percentiles column shows the percent Ramachandran outliers of the chain as a percentile score with respect to all X-ray entries followed by that with respect to entries of similar resolution.

The Analysed column shows the number of residues for which the backbone conformation was analysed, and the total number of residues.

Mol	Chain	Analysed	Favoured	Allowed	Outliers	Percentiles	
1	A	334/341 (98%)	330 (99%)	4 (1%)	0	100	100
1	B	332/341 (97%)	324 (98%)	7 (2%)	1 (0%)	44	38
All	All	666/682 (98%)	654 (98%)	11 (2%)	1 (0%)	51	46

All (1) Ramachandran outliers are listed below:

Mol	Chain	Res	Type
1	B	219	ASP

5.3.2 Protein sidechains ⓘ

In the following table, the Percentiles column shows the percent sidechain outliers of the chain as a percentile score with respect to all X-ray entries followed by that with respect to entries of similar resolution.

The Analysed column shows the number of residues for which the sidechain conformation was analysed, and the total number of residues.

Mol	Chain	Analysed	Rotameric	Outliers	Percentiles	
1	A	281/287 (98%)	280 (100%)	1 (0%)	93	94
1	B	280/287 (98%)	278 (99%)	2 (1%)	87	89
All	All	561/574 (98%)	558 (100%)	3 (0%)	91	93

All (3) residues with a non-rotameric sidechain are listed below:

Mol	Chain	Res	Type
1	A	200	THR
1	B	96	VAL
1	B	273	GLU

Some sidechains can be flipped to improve hydrogen bonding and reduce clashes. All (1) such sidechains are listed below:

Mol	Chain	Res	Type
1	B	95	GLN

5.3.3 RNA ⓘ

There are no RNA molecules in this entry.

5.4 Non-standard residues in protein, DNA, RNA chains ⓘ

There are no non-standard protein/DNA/RNA residues in this entry.

5.5 Carbohydrates ⓘ

There are no carbohydrates in this entry.

5.6 Ligand geometry ⓘ

4 ligands are modelled in this entry.

In the following table, the Counts columns list the number of bonds (or angles) for which Mogul statistics could be retrieved, the number of bonds (or angles) that are observed in the model and the number of bonds (or angles) that are defined in the chemical component dictionary. The Link column lists molecule types, if any, to which the group is linked. The Z score for a bond length (or angle) is the number of standard deviations the observed value is removed from the expected value. A bond length (or angle) with $|Z| > 2$ is considered an outlier worth inspection. RMSZ is the root-mean-square of all Z scores of the bond lengths (or angles).

Mol	Type	Chain	Res	Link	Bond lengths			Bond angles		
					Counts	RMSZ	# $ Z > 2$	Counts	RMSZ	# $ Z > 2$
2	NAI	A	345	-	40,48,48	1.01	2 (5%)	41,73,73	1.65	6 (14%)
3	OXM	A	346	-	2,5,5	3.43	1 (50%)	2,6,6	2.15	1 (50%)
2	NAI	B	345	-	40,48,48	1.01	2 (5%)	41,73,73	1.57	4 (9%)
3	OXM	B	346	-	2,5,5	3.46	1 (50%)	2,6,6	2.20	1 (50%)

In the following table, the Chirals column lists the number of chiral outliers, the number of chiral centers analysed, the number of these observed in the model and the number defined in the chemical component dictionary. Similar counts are reported in the Torsion and Rings columns. '-' means no outliers of that kind were identified.

Mol	Type	Chain	Res	Link	Chirals	Torsions	Rings
2	NAI	A	345	-	-	0/25/72/72	0/5/5/5
3	OXM	A	346	-	-	0/0/4/4	0/0/0/0
2	NAI	B	345	-	-	0/25/72/72	0/5/5/5
3	OXM	B	346	-	-	0/0/4/4	0/0/0/0

All (6) bond length outliers are listed below:

Mol	Chain	Res	Type	Atoms	Z	Observed(Å)	Ideal(Å)
2	A	345	NAI	C5A-C4A	2.97	1.47	1.40
2	B	345	NAI	C5A-C4A	2.99	1.47	1.40

Continued on next page...

Continued from previous page...

Mol	Chain	Res	Type	Atoms	Z	Observed(Å)	Ideal(Å)
2	B	345	NAI	C6N-C5N	3.03	1.38	1.33
2	A	345	NAI	C6N-C5N	3.05	1.38	1.33
3	A	346	OXM	C1-N1	4.73	1.42	1.33
3	B	346	OXM	C1-N1	4.76	1.42	1.33

All (12) bond angle outliers are listed below:

Mol	Chain	Res	Type	Atoms	Z	Observed(°)	Ideal(°)
2	A	345	NAI	N3A-C2A-N1A	-7.20	122.59	128.86
2	B	345	NAI	N3A-C2A-N1A	-6.98	122.78	128.86
2	A	345	NAI	O7N-C7N-N7N	-3.39	114.68	122.92
2	B	345	NAI	C4A-C5A-N7A	-3.10	106.41	109.41
2	B	345	NAI	O7N-C7N-N7N	-3.06	115.50	122.92
2	A	345	NAI	C4A-C5A-N7A	-3.06	106.46	109.41
2	A	345	NAI	C1D-N1N-C2N	-2.46	116.92	121.09
2	A	345	NAI	C4B-O4B-C1B	-2.03	107.61	109.77
2	B	345	NAI	C2A-N1A-C6A	2.03	122.32	118.77
2	A	345	NAI	C2A-N1A-C6A	2.11	122.45	118.77
3	B	346	OXM	C2-C1-N1	2.48	120.04	115.85
3	A	346	OXM	C2-C1-N1	2.49	120.04	115.85

There are no chirality outliers.

There are no torsion outliers.

There are no ring outliers.

2 monomers are involved in 2 short contacts:

Mol	Chain	Res	Type	Clashes	Symm-Clashes
2	A	345	NAI	1	0
2	B	345	NAI	1	0

5.7 Other polymers [i](#)

There are no such residues in this entry.

5.8 Polymer linkage issues [i](#)

There are no chain breaks in this entry.

6 Fit of model and data

6.1 Protein, DNA and RNA chains

In the following table, the column labelled ‘#RSRZ> 2’ contains the number (and percentage) of RSRZ outliers, followed by percent RSRZ outliers for the chain as percentile scores relative to all X-ray entries and entries of similar resolution. The OWAB column contains the minimum, median, 95th percentile and maximum values of the occupancy-weighted average B-factor per residue. The column labelled ‘Q< 0.9’ lists the number of (and percentage) of residues with an average occupancy less than 0.9.

Mol	Chain	Analysed	<RSRZ>	#RSRZ>2	OWAB(Å ²)	Q<0.9
1	A	331/341 (97%)	0.12	4 (1%) 79 80	11, 19, 26, 53	0
1	B	328/341 (96%)	0.49	19 (5%) 24 26	15, 26, 40, 52	0
All	All	659/682 (96%)	0.31	23 (3%) 44 48	11, 22, 38, 53	0

All (23) RSRZ outliers are listed below:

Mol	Chain	Res	Type	RSRZ
1	B	118	TRP	4.5
1	A	334	LEU	4.0
1	B	144	LYS	3.8
1	B	114	TYR	3.3
1	B	146	LEU	3.2
1	B	47[A]	ASN	3.2
1	A	23[A]	TRP	3.0
1	B	172	VAL	2.8
1	B	328	LEU	2.8
1	B	145	ASN	2.7
1	B	116	SER	2.7
1	B	117	LYS	2.5
1	B	23[A]	TRP	2.5
1	B	331	LEU	2.5
1	B	211	VAL	2.5
1	A	118	TRP	2.4
1	B	115	LEU	2.3
1	B	46[A]	MET	2.3
1	B	273	GLU	2.3
1	A	174	VAL	2.2
1	B	218	PHE	2.2
1	B	304	LYS	2.1
1	B	143	ALA	2.1

6.2 Non-standard residues in protein, DNA, RNA chains [i](#)

There are no non-standard protein/DNA/RNA residues in this entry.

6.3 Carbohydrates [i](#)

There are no carbohydrates in this entry.

6.4 Ligands [i](#)

In the following table, the Atoms column lists the number of modelled atoms in the group and the number defined in the chemical component dictionary. LLDF column lists the quality of electron density of the group with respect to its neighbouring residues in protein, DNA or RNA chains. The B-factors column lists the minimum, median, 95th percentile and maximum values of B factors of atoms in the group. The column labelled 'Q< 0.9' lists the number of atoms with occupancy less than 0.9.

Mol	Type	Chain	Res	Atoms	RSCC	RSR	LLDF	B-factors(Å ²)	Q<0.9
3	OXM	A	346	6/6	0.94	0.15	3.79	14,16,17,17	0
2	NAI	A	345	44/44	0.96	0.12	0.46	13,17,20,23	0
2	NAI	B	345	44/44	0.96	0.11	-0.36	16,19,24,27	0
3	OXM	B	346	6/6	0.96	0.10	-0.89	20,22,26,26	0

6.5 Other polymers [i](#)

There are no such residues in this entry.