



# Full wwPDB X-ray Structure Validation Report ⓘ

Feb 12, 2017 – 09:52 pm GMT

PDB ID : 5A2L  
Title : Crystal structure of scFv-SM3 in complex with APD-CGalNAc-RP  
Authors : Martinez-Saez, N.; Castro-Lopez, J.; Valero-Gonzalez, J.; Madariaga, D.; Companon, I.; Somovilla, V.J.; Salvado, M.; Asensio, J.L.; Jimenez-Barbero, J.; Avenoz, A.; Busto, J.H.; Bernardes, G.J.L.; Peregrina, J.M.; Hurtado-Guerrero, R.; Corzana, F.  
Deposited on : 2015-05-20  
Resolution : 1.79 Å(reported)

This is a Full wwPDB X-ray Structure Validation Report for a publicly released PDB entry.

We welcome your comments at [validation@mail.wwpdb.org](mailto:validation@mail.wwpdb.org)

A user guide is available at

<http://wwpdb.org/validation/2016/XrayValidationReportHelp>

with specific help available everywhere you see the ⓘ symbol.

---

The following versions of software and data (see [references ⓘ](#)) were used in the production of this report:

MolProbity : 4.02b-467  
Mogul : 1.7.2 (RC1), CSD as538be (2017)  
Xtriage (Phenix) : 1.9-1692  
EDS : trunk28620  
Percentile statistics : 20161228.v01 (using entries in the PDB archive December 28th 2016)  
Refmac : 5.8.0135  
CCP4 : 6.5.0  
Ideal geometry (proteins) : Engh & Huber (2001)  
Ideal geometry (DNA, RNA) : Parkinson et al. (1996)  
Validation Pipeline (wwPDB-VP) : recalc28949

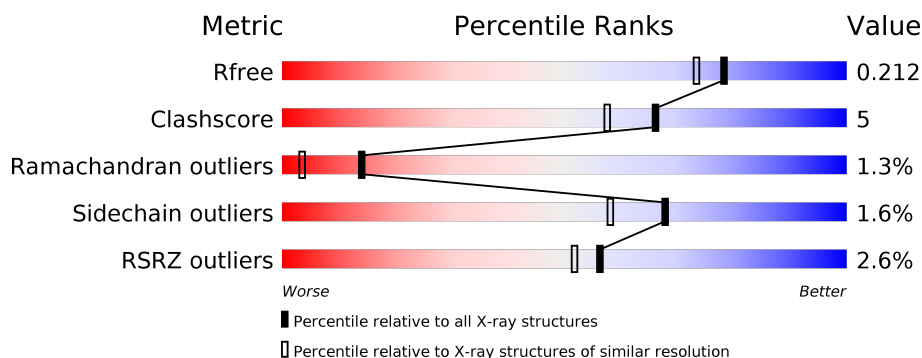
# 1 Overall quality at a glance

The following experimental techniques were used to determine the structure:

*X-RAY DIFFRACTION*

The reported resolution of this entry is 1.79 Å.

Percentile scores (ranging between 0-100) for global validation metrics of the entry are shown in the following graphic. The table shows the number of entries on which the scores are based.



Metric	Whole archive (#Entries)	Similar resolution (#Entries, resolution range(Å))
$R_{free}$	100719	4827 (1.80-1.80)
Clashscore	112137	5742 (1.80-1.80)
Ramachandran outliers	110173	5676 (1.80-1.80)
Sidechain outliers	110143	5675 (1.80-1.80)
RSRZ outliers	101464	4906 (1.80-1.80)

The table below summarises the geometric issues observed across the polymeric chains and their fit to the electron density. The red, orange, yellow and green segments on the lower bar indicate the fraction of residues that contain outliers for  $\geq 3$ , 2, 1 and 0 types of geometric quality criteria. A grey segment represents the fraction of residues that are not modelled. The numeric value for each fraction is indicated below the corresponding segment, with a dot representing fractions  $\leq 5\%$ . The upper red bar (where present) indicates the fraction of residues that have poor fit to the electron density. The numeric value is given above the bar.

Mol	Chain	Length	Quality of chain
1	H	244	<div> <div>2%</div> <div> <div></div> <div>78%</div> <div>11%</div> <div>••</div> <div>8%</div> </div> </div>
2	P	6	<div> <div>17%</div> <div> <div></div> <div>83%</div> <div>17%</div> </div> </div>

The following table lists non-polymeric compounds, carbohydrate monomers and non-standard residues in protein, DNA, RNA chains that are outliers for geometric or electron-density-fit criteria:

Mol	Type	Chain	Res	Chirality	Geometry	Clashes	Electron density
3	EDO	H	3003	-	-	-	X

## 2 Entry composition

There are 5 unique types of molecules in this entry. The entry contains 1909 atoms, of which 0 are hydrogens and 0 are deuteriums.

In the tables below, the ZeroOcc column contains the number of atoms modelled with zero occupancy, the AltConf column contains the number of residues with at least one atom in alternate conformation and the Trace column contains the number of residues modelled with at most 2 atoms.

- Molecule 1 is a protein called SCFV-SM3.

Mol	Chain	Residues	Atoms					ZeroOcc	AltConf	Trace
1	H	225	Total	C	N	O	S	0	2	0
			1722	1085	291	339	7			

There are 30 discrepancies between the modelled and reference sequences:

Chain	Residue	Modelled	Actual	Comment	Reference
H	1	GLN	-	CLONING ARTIFACT	UNP P01801
H	2	VAL	-	CLONING ARTIFACT	UNP P01801
H	3	GLN	-	CLONING ARTIFACT	UNP P01801
H	4	LEU	-	CLONING ARTIFACT	UNP P01801
H	5	GLN	-	CLONING ARTIFACT	UNP P01801
H	94	GLY	-	INSERTION	UNP P01801
H	95	VAL	THR	CONFLICT	UNP P01801
H	97	GLN	-	INSERTION	UNP P01801
H	108	THR	LEU	CONFLICT	UNP P01801
H	114	SER	-	LINKER	UNP P01801
H	115	SER	-	LINKER	UNP P01801
H	116	GLY	-	LINKER	UNP P01801
H	117	GLY	-	LINKER	UNP P01801
H	118	GLY	-	LINKER	UNP P01801
H	119	GLY	-	LINKER	UNP P01801
H	120	SER	-	LINKER	UNP P01801
H	121	GLY	-	LINKER	UNP P01801
H	122	GLY	-	LINKER	UNP P01801
H	123	GLY	-	LINKER	UNP P01801
H	124	GLY	-	LINKER	UNP P01801
H	125	GLY	-	LINKER	UNP P01801
H	126	SER	-	LINKER	UNP P01801
H	127	SER	-	LINKER	UNP P01801
H	128	GLY	-	LINKER	UNP P01801
H	129	SER	-	LINKER	UNP P01801
H	130	SER	-	LINKER	UNP P01801
H	1002	ASP	GLN	CONFLICT	UNP P01727

*Continued on next page...*

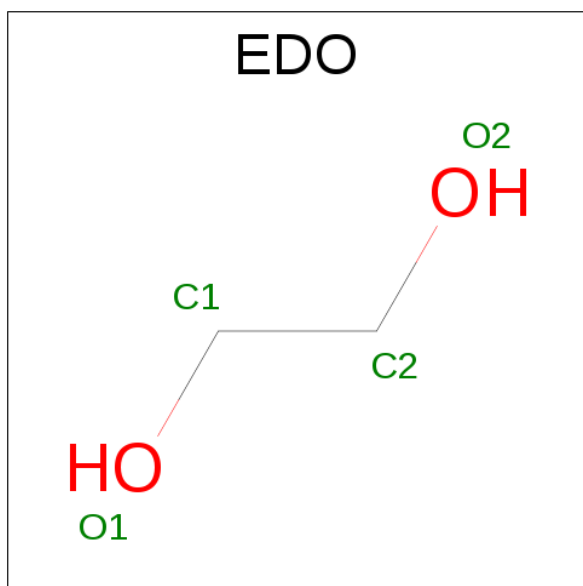
Continued from previous page...

Chain	Residue	Modelled	Actual	Comment	Reference
H	1003	ILE	ALA	CONFLICT	UNP P01727
H	1078	ALA	THR	CONFLICT	UNP P01727
H	1085	ILE	MET	CONFLICT	UNP P01727

- Molecule 2 is a protein called MODIFIED ANTIGEN TN.

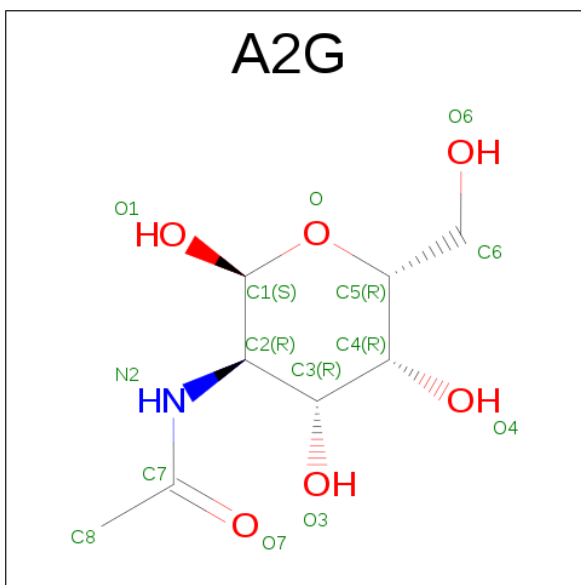
Mol	Chain	Residues	Atoms					ZeroOcc	AltConf	Trace
2	P	6	Total	C	N	O	S	0	0	0
			44	26	9	8	1			

- Molecule 3 is 1,2-ETHANEDIOL (three-letter code: EDO) (formula:  $C_2H_6O_2$ ).



Mol	Chain	Residues	Atoms			ZeroOcc	AltConf
3	H	1	Total	C	O	0	0
			4	2	2		
3	H	1	Total	C	O	0	0
			4	2	2		
3	H	1	Total	C	O	0	0
			4	2	2		
3	H	1	Total	C	O	0	0
			4	2	2		

- Molecule 4 is SUGAR (N-ACETYL-2-DEOXY-2-AMINO-GALACTOSE) (three-letter code: A2G) (formula:  $C_8H_{15}NO_6$ ).



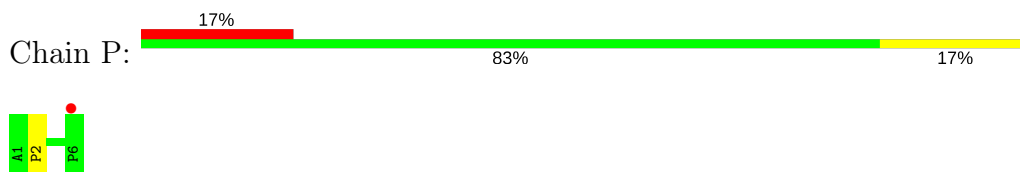
Mol	Chain	Residues	Atoms				ZeroOcc	AltConf
4	P	1	Total	C	N	O	0	0
			14	8	1	5		

- Molecule 5 is water.

Mol	Chain	Residues	Atoms		ZeroOcc	AltConf
5	H	108	Total	O	0	0
			108	108		
5	P	5	Total	O	0	0
			5	5		

i

- Molecule 1: SCFV-SM3



## 4 Data and refinement statistics

Property	Value	Source
Space group	P 1 21 1	Depositor
Cell constants a, b, c, $\alpha$ , $\beta$ , $\gamma$	46.08Å 35.19Å 66.29Å 90.00° 103.01° 90.00°	Depositor
Resolution (Å)	64.59 – 1.79 44.90 – 1.79	Depositor EDS
% Data completeness (in resolution range)	99.4 (64.59-1.79) 99.4 (44.90-1.79)	Depositor EDS
$R_{merge}$	0.11	Depositor
$R_{sym}$	(Not available)	Depositor
$\langle I/\sigma(I) \rangle$ <sup>1</sup>	2.20 (at 1.78Å)	Xtriage
Refinement program	REFMAC 5.8.0049	Depositor
R, $R_{free}$	0.184 , 0.204 0.193 , 0.212	Depositor DCC
$R_{free}$ test set	569 reflections (2.97%)	DCC
Wilson B-factor (Å <sup>2</sup> )	18.0	Xtriage
Anisotropy	0.282	Xtriage
Bulk solvent $k_{sol}$ (e/Å <sup>3</sup> ), $B_{sol}$ (Å <sup>2</sup> )	0.41 , 50.2	EDS
L-test for twinning <sup>2</sup>	$\langle  L  \rangle = 0.47$ , $\langle L^2 \rangle = 0.30$	Xtriage
Estimated twinning fraction	No twinning to report.	Xtriage
$F_o, F_c$ correlation	0.95	EDS
Total number of atoms	1909	wwPDB-VP
Average B, all atoms (Å <sup>2</sup> )	27.0	wwPDB-VP

Xtriage's analysis on translational NCS is as follows: *The largest off-origin peak in the Patterson function is 9.52% of the height of the origin peak. No significant pseudotranslation is detected.*

<sup>1</sup>Intensities estimated from amplitudes.

<sup>2</sup>Theoretical values of  $\langle |L| \rangle$ ,  $\langle L^2 \rangle$  for acentric reflections are 0.5, 0.333 respectively for untwinned datasets, and 0.375, 0.2 for perfectly twinned datasets.



## 5 Model quality

### 5.1 Standard geometry

Bond lengths and bond angles in the following residue types are not validated in this section: EDO, A2G

The Z score for a bond length (or angle) is the number of standard deviations the observed value is removed from the expected value. A bond length (or angle) with  $|Z| > 5$  is considered an outlier worth inspection. RMSZ is the root-mean-square of all Z scores of the bond lengths (or angles).

Mol	Chain	Bond lengths		Bond angles	
		RMSZ	$\# Z  > 5$	RMSZ	$\# Z  > 5$
1	H	1.04	12/1767 (0.7%)	0.85	6/2404 (0.2%)
2	P	0.57	0/45	0.88	0/61
All	All	1.03	12/1812 (0.7%)	0.85	6/2465 (0.2%)

Chiral center outliers are detected by calculating the chiral volume of a chiral center and verifying if the center is modelled as a planar moiety or with the opposite hand. A planarity outlier is detected by checking planarity of atoms in a peptide group, atoms in a mainchain group or atoms of a sidechain that are expected to be planar.

Mol	Chain	#Chirality outliers	#Planarity outliers
1	H	0	2

All (12) bond length outliers are listed below:

Mol	Chain	Res	Type	Atoms	Z	Observed(Å)	Ideal(Å)
1	H	52(B)	LYS	C-N	14.51	1.67	1.34
1	H	82	MET	C-N	14.09	1.66	1.34
1	H	82(A)	ASN	C-N	13.59	1.65	1.34
1	H	52	ARG	C-N	12.24	1.62	1.34
1	H	52(A)	LEU	C-N	10.09	1.57	1.34
1	H	1106	VAL	C-N	9.57	1.56	1.34
1	H	82(B)	ASN	C-N	9.54	1.55	1.34
1	H	1027	THR	C-N	8.66	1.48	1.33
1	H	98	PHE	C-N	8.51	1.53	1.34
1	H	1027(A)	GLY	C-N	8.07	1.52	1.34
1	H	1027(B)	ALA	C-N	7.48	1.51	1.34
1	H	82(C)	LEU	C-N	5.18	1.46	1.34

All (6) bond angle outliers are listed below:

Mol	Chain	Res	Type	Atoms	Z	Observed(°)	Ideal(°)
1	H	52	ARG	NE-CZ-NH1	8.41	124.50	120.30
1	H	1027	THR	O-C-N	-7.24	110.89	123.20
1	H	66	ARG	NE-CZ-NH2	-7.02	116.79	120.30
1	H	66	ARG	NE-CZ-NH1	6.53	123.56	120.30
1	H	1027(A)	GLY	O-C-N	5.78	131.94	122.70
1	H	82(B)	ASN	O-C-N	-5.21	114.37	122.70

There are no chirality outliers.

All (2) planarity outliers are listed below:

Mol	Chain	Res	Type	Group
1	H	82(A)	ASN	Mainchain
1	H	82(B)	ASN	Mainchain

## 5.2 Too-close contacts ⓘ

In the following table, the Non-H and H(model) columns list the number of non-hydrogen atoms and hydrogen atoms in the chain respectively. The H(added) column lists the number of hydrogen atoms added and optimized by MolProbity. The Clashes column lists the number of clashes within the asymmetric unit, whereas Symm-Clashes lists symmetry related clashes.

Mol	Chain	Non-H	H(model)	H(added)	Clashes	Symm-Clashes
1	H	1722	0	1653	16	0
2	P	44	0	42	0	0
3	H	16	0	24	2	0
4	P	14	0	13	0	0
5	H	108	0	0	2	1
5	P	5	0	0	0	0
All	All	1909	0	1732	16	1

The all-atom clashscore is defined as the number of clashes found per 1000 atoms (including hydrogen atoms). The all-atom clashscore for this structure is 5.

All (16) close contacts within the same asymmetric unit are listed below, sorted by their clash magnitude.

Atom-1	Atom-2	Interatomic distance (Å)	Clash overlap (Å)
1:H:66:ARG:NH2	1:H:86:ASP:OD2	2.09	0.85
1:H:12:VAL:HG11	1:H:82(C):LEU:HD12	1.66	0.78
1:H:1079:GLN:OE1	5:H:2102:HOH:O	2.10	0.69
1:H:82(B):ASN:HD21	3:H:3002:EDO:H22	1.59	0.67

*Continued on next page...*

Continued from previous page...

Atom-1	Atom-2	Interatomic distance (Å)	Clash overlap (Å)
1:H:1045:THR:HG23	5:H:2085:HOH:O	1.96	0.65
1:H:1054:ARG:HG2	1:H:1058:VAL:HB	1.81	0.61
1:H:52:ARG:HG3	1:H:56:ALA:HB3	1.93	0.50
1:H:66:ARG:HH22	1:H:86:ASP:CG	2.13	0.50
1:H:91:TYR:OH	1:H:1042:HIS:HB3	2.15	0.47
1:H:55:TYR:CD1	1:H:71:ARG:HD3	2.51	0.45
1:H:14:PRO:HD3	1:H:112:SER:HA	1.98	0.44
1:H:82(B):ASN:ND2	3:H:3002:EDO:H22	2.29	0.44
1:H:1105:THR:HG22	1:H:1106(A):LEU:HD13	2.00	0.43
1:H:96:GLY:N	1:H:97:GLN:HA	2.34	0.43
1:H:1039:LYS:HB3	1:H:1040:PRO:HD2	2.01	0.43
1:H:82(C):LEU:HA	1:H:82(C):LEU:HD23	1.89	0.40

All (1) symmetry-related close contacts are listed below. The label for Atom-2 includes the symmetry operator and encoded unit-cell translations to be applied.

Atom-1	Atom-2	Interatomic distance (Å)	Clash overlap (Å)
5:H:2064:HOH:O	5:H:2102:HOH:O[2_645]	1.28	0.92

## 5.3 Torsion angles

### 5.3.1 Protein backbone

In the following table, the Percentiles column shows the percent Ramachandran outliers of the chain as a percentile score with respect to all X-ray entries followed by that with respect to entries of similar resolution.

The Analysed column shows the number of residues for which the backbone conformation was analysed, and the total number of residues.

Mol	Chain	Analysed	Favoured	Allowed	Outliers	Percentiles	
1	H	223/244 (91%)	214 (96%)	7 (3%)	2 (1%)	20	6
2	P	4/6 (67%)	2 (50%)	1 (25%)	1 (25%)	0	0
All	All	227/250 (91%)	216 (95%)	8 (4%)	3 (1%)	14	3

All (3) Ramachandran outliers are listed below:

Mol	Chain	Res	Type
1	H	95	VAL

Continued on next page...

*Continued from previous page...*

Mol	Chain	Res	Type
1	H	1040	PRO
2	P	2	PRO

### 5.3.2 Protein sidechains ⓘ

In the following table, the Percentiles column shows the percent sidechain outliers of the chain as a percentile score with respect to all X-ray entries followed by that with respect to entries of similar resolution.

The Analysed column shows the number of residues for which the sidechain conformation was analysed, and the total number of residues.

Mol	Chain	Analysed	Rotameric	Outliers	Percentiles	
1	H	185/191 (97%)	182 (98%)	3 (2%)	68	58
2	P	5/5 (100%)	5 (100%)	0	100	100
All	All	190/196 (97%)	187 (98%)	3 (2%)	68	58

All (3) residues with a non-rotameric sidechain are listed below:

Mol	Chain	Res	Type
1	H	11	LEU
1	H	52	ARG
1	H	1045	THR

Some sidechains can be flipped to improve hydrogen bonding and reduce clashes. All (4) such sidechains are listed below:

Mol	Chain	Res	Type
1	H	5	GLN
1	H	82(B)	ASN
1	H	1079	GLN
1	H	1095	HIS

### 5.3.3 RNA ⓘ

There are no RNA molecules in this entry.

## 5.4 Non-standard residues in protein, DNA, RNA chains ⓘ

There are no non-standard protein/DNA/RNA residues in this entry.

## 5.5 Carbohydrates [i](#)

There are no carbohydrates in this entry.

## 5.6 Ligand geometry [i](#)

5 ligands are modelled in this entry.

In the following table, the Counts columns list the number of bonds (or angles) for which Mogul statistics could be retrieved, the number of bonds (or angles) that are observed in the model and the number of bonds (or angles) that are defined in the chemical component dictionary. The Link column lists molecule types, if any, to which the group is linked. The Z score for a bond length (or angle) is the number of standard deviations the observed value is removed from the expected value. A bond length (or angle) with  $|Z| > 2$  is considered an outlier worth inspection. RMSZ is the root-mean-square of all Z scores of the bond lengths (or angles).

Mol	Type	Chain	Res	Link	Bond lengths			Bond angles		
					Counts	RMSZ	$\# Z  > 2$	Counts	RMSZ	$\# Z  > 2$
3	EDO	H	3001	-	3,3,3	0.44	0	2,2,2	0.24	0
3	EDO	H	3002	-	3,3,3	0.61	0	2,2,2	0.16	0
3	EDO	H	3003	-	3,3,3	0.54	0	2,2,2	0.10	0
3	EDO	H	3004	-	3,3,3	0.53	0	2,2,2	0.53	0
4	A2G	P	1009	2	14,14,15	0.29	0	15,19,21	1.54	1 (6%)

In the following table, the Chirals column lists the number of chiral outliers, the number of chiral centers analysed, the number of these observed in the model and the number defined in the chemical component dictionary. Similar counts are reported in the Torsion and Rings columns. '-' means no outliers of that kind were identified.

Mol	Type	Chain	Res	Link	Chirals	Torsions	Rings
3	EDO	H	3001	-	-	0/1/1/1	0/0/0/0
3	EDO	H	3002	-	-	0/1/1/1	0/0/0/0
3	EDO	H	3003	-	-	0/1/1/1	0/0/0/0
3	EDO	H	3004	-	-	0/1/1/1	0/0/0/0
4	A2G	P	1009	2	-	0/6/23/26	0/1/1/1

There are no bond length outliers.

All (1) bond angle outliers are listed below:

Mol	Chain	Res	Type	Atoms	Z	Observed(°)	Ideal(°)
4	P	1009	A2G	O-C1-C2	-4.96	104.58	111.47

There are no chirality outliers.

There are no torsion outliers.

There are no ring outliers.

1 monomer is involved in 2 short contacts:

Mol	Chain	Res	Type	Clashes	Symm-Clashes
3	H	3002	EDO	2	0

## 5.7 Other polymers [i](#)

There are no such residues in this entry.

## 5.8 Polymer linkage issues [i](#)

There are no chain breaks in this entry.

## 6 Fit of model and data [i](#)

### 6.1 Protein, DNA and RNA chains [i](#)

In the following table, the column labelled ‘#RSRZ> 2’ contains the number (and percentage) of RSRZ outliers, followed by percent RSRZ outliers for the chain as percentile scores relative to all X-ray entries and entries of similar resolution. The OWAB column contains the minimum, median, 95<sup>th</sup> percentile and maximum values of the occupancy-weighted average B-factor per residue. The column labelled ‘Q< 0.9’ lists the number of (and percentage) of residues with an average occupancy less than 0.9.

Mol	Chain	Analysed	<RSRZ>	#RSRZ>2	OWAB(Å <sup>2</sup> )	Q<0.9
1	H	225/244 (92%)	0.03	5 (2%) 62 58	16, 24, 44, 74	3 (1%)
2	P	6/6 (100%)	0.31	1 (16%) 2 1	21, 29, 46, 50	0
All	All	231/250 (92%)	0.04	6 (2%) 56 52	16, 24, 46, 74	3 (1%)

All (6) RSRZ outliers are listed below:

Mol	Chain	Res	Type	RSRZ
1	H	1041	ASP	5.6
1	H	1040	PRO	4.8
1	H	42	GLU	3.3
1	H	2	VAL	3.0
1	H	1107	GLY	2.8
2	P	6	PRO	2.5

### 6.2 Non-standard residues in protein, DNA, RNA chains [i](#)

There are no non-standard protein/DNA/RNA residues in this entry.

### 6.3 Carbohydrates [i](#)

There are no carbohydrates in this entry.

### 6.4 Ligands [i](#)

In the following table, the Atoms column lists the number of modelled atoms in the group and the number defined in the chemical component dictionary. LLDF column lists the quality of electron density of the group with respect to its neighbouring residues in protein, DNA or RNA chains. The B-factors column lists the minimum, median, 95<sup>th</sup> percentile and maximum values of B factors

of atoms in the group. The column labelled 'Q < 0.9' lists the number of atoms with occupancy less than 0.9.

Mol	Type	Chain	Res	Atoms	RSCC	RSR	LLDF	B-factors( $\text{\AA}^2$ )	Q<0.9
3	EDO	H	3003	4/4	0.93	0.12	2.70	35,44,45,52	0
4	A2G	P	1009	14/15	0.89	0.13	0.50	36,41,45,49	0
3	EDO	H	3002	4/4	0.91	0.12	0.13	29,34,36,40	0
3	EDO	H	3004	4/4	0.87	0.13	-	41,42,44,44	0
3	EDO	H	3001	4/4	0.92	0.22	-	39,41,42,46	0

## 6.5 Other polymers [i](#)

There are no such residues in this entry.