



# Full wwPDB X-ray Structure Validation Report ⓘ

Feb 13, 2017 – 03:12 am GMT

PDB ID : 4A4M  
Title : Crystal structure of the light-activated constitutively active N2C, M257Y,D282C rhodopsin mutant in complex with a peptide resembling the C-terminus of the Galpha-protein subunit (GaCT)  
Authors : Deupi, X.; Edwards, P.; Singhal, A.; Nickle, B.; Oprian, D.D.; Schertler, G.F.X.; Standfuss, J.  
Deposited on : 2011-10-17  
Resolution : 3.30 Å(reported)

This is a Full wwPDB X-ray Structure Validation Report for a publicly released PDB entry.

We welcome your comments at [validation@mail.wwpdb.org](mailto:validation@mail.wwpdb.org)

A user guide is available at

<http://wwpdb.org/validation/2016/XrayValidationReportHelp>

with specific help available everywhere you see the ⓘ symbol.

---

The following versions of software and data (see [references ⓘ](#)) were used in the production of this report:

MolProbity	:	4.02b-467
Mogul	:	1.7.2 (RC1), CSD as538be (2017)
Xtriage (Phenix)	:	1.9-1692
EDS	:	trunk28620
Percentile statistics	:	20161228.v01 (using entries in the PDB archive December 28th 2016)
Refmac	:	5.8.0135
CCP4	:	6.5.0
Ideal geometry (proteins)	:	Engh & Huber (2001)
Ideal geometry (DNA, RNA)	:	Parkinson et al. (1996)
Validation Pipeline (wwPDB-VP)	:	recalc28949

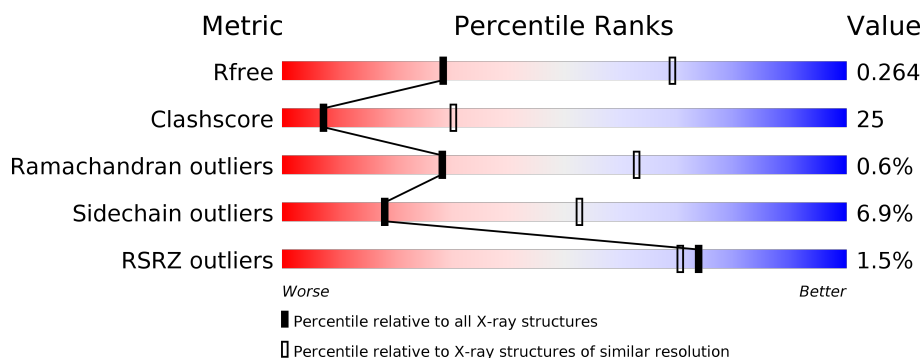
# 1 Overall quality at a glance

The following experimental techniques were used to determine the structure:

*X-RAY DIFFRACTION*

The reported resolution of this entry is 3.30 Å.

Percentile scores (ranging between 0-100) for global validation metrics of the entry are shown in the following graphic. The table shows the number of entries on which the scores are based.



Metric	Whole archive (#Entries)	Similar resolution (#Entries, resolution range(Å))
$R_{free}$	100719	1034 (3.36-3.24)
Clashscore	112137	1100 (3.36-3.24)
Ramachandran outliers	110173	1081 (3.36-3.24)
Sidechain outliers	110143	1080 (3.36-3.24)
RSRZ outliers	101464	1039 (3.36-3.24)

The table below summarises the geometric issues observed across the polymeric chains and their fit to the electron density. The red, orange, yellow and green segments on the lower bar indicate the fraction of residues that contain outliers for  $\geq 3$ , 2, 1 and 0 types of geometric quality criteria. A grey segment represents the fraction of residues that are not modelled. The numeric value for each fraction is indicated below the corresponding segment, with a dot representing fractions  $\leq 5\%$ . The upper red bar (where present) indicates the fraction of residues that have poor fit to the electron density. The numeric value is given above the bar.

Mol	Chain	Length	Quality of chain
1	A	349	<div> <div style="width: 100%; height: 10px; position: relative;"> <div style="position: absolute; top: -10px; left: 0;">%</div> <div style="position: absolute; top: 0; left: 0; width: 54%; height: 10px; background-color: green;"></div> <div style="position: absolute; top: 0; left: 54%; width: 36%; height: 10px; background-color: yellow;"></div> <div style="position: absolute; top: 0; left: 90%; width: 6%; height: 10px; background-color: orange;"></div> <div style="position: absolute; top: 0; left: 100%; width: 6%; height: 10px; background-color: grey;"></div> </div> <div style="display: flex; justify-content: space-between; width: 100%;"> <span>54%</span> <span>36%</span> <span>• 6%</span> </div> </div>
2	B	11	<div> <div style="width: 100%; height: 10px; position: relative;"> <div style="position: absolute; top: 0; left: 0; width: 45%; height: 10px; background-color: green;"></div> <div style="position: absolute; top: 0; left: 45%; width: 45%; height: 10px; background-color: yellow;"></div> <div style="position: absolute; top: 0; left: 90%; width: 9%; height: 10px; background-color: orange;"></div> </div> <div style="display: flex; justify-content: space-between; width: 100%;"> <span>45%</span> <span>45%</span> <span>9%</span> </div> </div>

The following table lists non-polymeric compounds, carbohydrate monomers and non-standard residues in protein, DNA, RNA chains that are outliers for geometric or electron-density-fit criteria:

Mol	Type	Chain	Res	Chirality	Geometry	Clashes	Electron density
3	RET	A	401	-	-	-	X
4	ACT	A	1402	-	-	-	X
6	PLM	A	1404	-	-	-	X

## 2 Entry composition

There are 8 unique types of molecules in this entry. The entry contains 2781 atoms, of which 0 are hydrogens and 0 are deuteriums.

In the tables below, the ZeroOcc column contains the number of atoms modelled with zero occupancy, the AltConf column contains the number of residues with at least one atom in alternate conformation and the Trace column contains the number of residues modelled with at most 2 atoms.

- Molecule 1 is a protein called RHODOPSIN.

Mol	Chain	Residues	Atoms					ZeroOcc	AltConf	Trace
1	A	327	Total	C	N	O	S	0	0	0
			2595	1729	399	440	27			

There are 4 discrepancies between the modelled and reference sequences:

Chain	Residue	Modelled	Actual	Comment	Reference
A	0	ACE	-	ACETYLATION	UNP P02699
A	2	CYS	ASN	ENGINEERED MUTATION	UNP P02699
A	257	TYR	MET	ENGINEERED MUTATION	UNP P02699
A	282	CYS	ASP	ENGINEERED MUTATION	UNP P02699

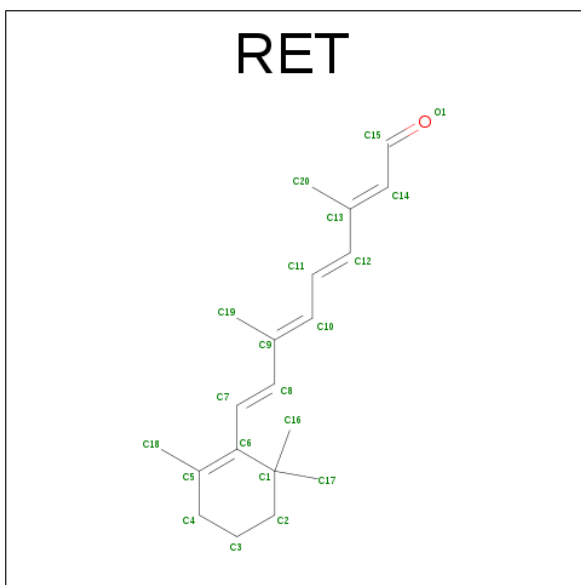
- Molecule 2 is a protein called GUANINE NUCLEOTIDE-BINDING PROTEIN G(T) SUB-UNIT ALPHA-3.

Mol	Chain	Residues	Atoms					ZeroOcc	AltConf	Trace
2	B	11	Total	C	N	O	S	0	0	0
			88	57	13	17	1			

There is a discrepancy between the modelled and reference sequences:

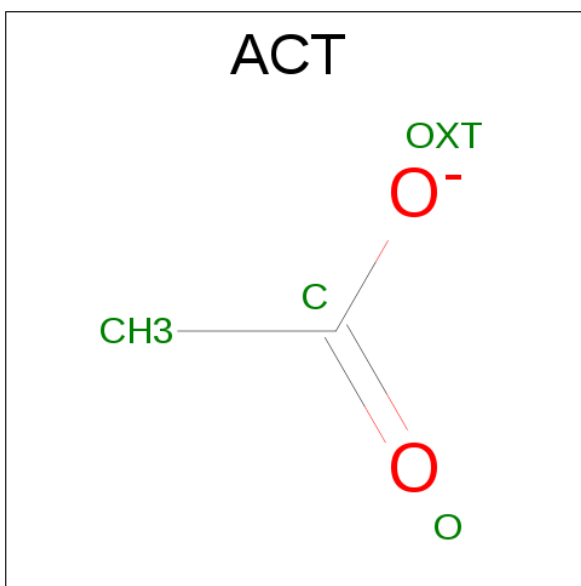
Chain	Residue	Modelled	Actual	Comment	Reference
B	341	LEU	LYS	ENGINEERED MUTATION	UNP P0C7Q4

- Molecule 3 is RETINAL (three-letter code: RET) (formula: C<sub>20</sub>H<sub>28</sub>O).



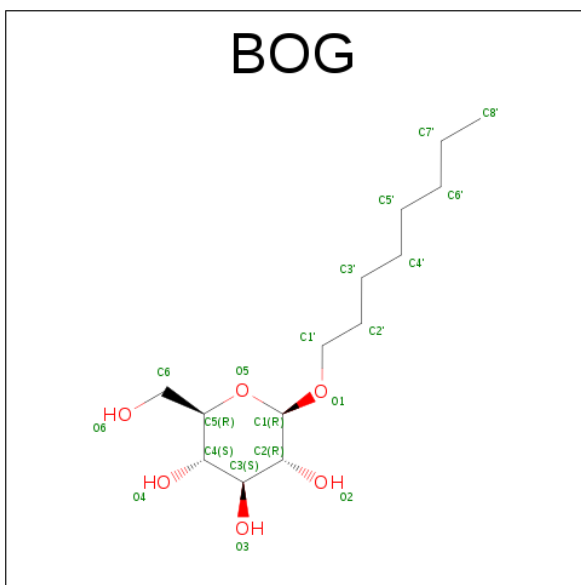
Mol	Chain	Residues	Atoms		ZeroOcc	AltConf
3	A	1	Total	C	0	0
			20	20		

- Molecule 4 is ACETATE ION (three-letter code: ACT) (formula:  $C_2H_3O_2$ ).



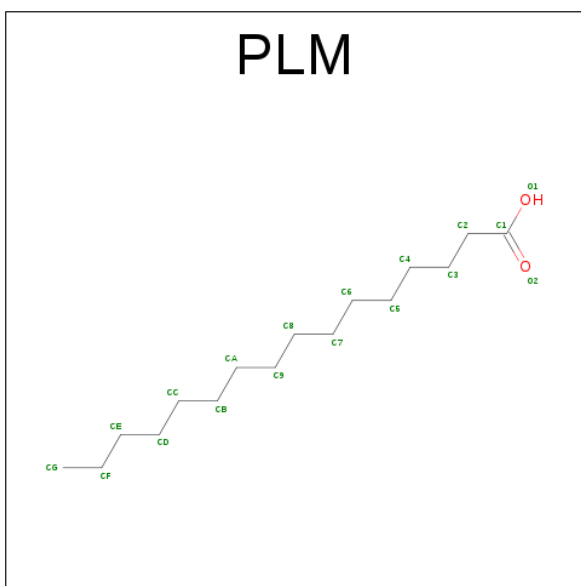
Mol	Chain	Residues	Atoms			ZeroOcc	AltConf
4	A	1	Total	C	O	0	0
			4	2	2		

- Molecule 5 is SUGAR (B-OCTYLGLUCOSIDE) (three-letter code: BOG) (formula:  $C_{14}H_{28}O_6$ ).



Mol	Chain	Residues	Atoms			ZeroOcc	AltConf
5	A	1	Total	C	O	0	0
			20	14	6		

- Molecule 6 is PALMITIC ACID (three-letter code: PLM) (formula:  $C_{16}H_{32}O_2$ ).



Mol	Chain	Residues	Atoms			ZeroOcc	AltConf
6	A	1	Total	C	O	0	0
			17	16	1		

- Molecule 7 is a polymer of unknown type called SUGAR (2-MER).

Mol	Chain	Residues	Atoms				ZeroOcc	AltConf
7	A	2	Total	C	N	O	0	0
			28	16	2	10		

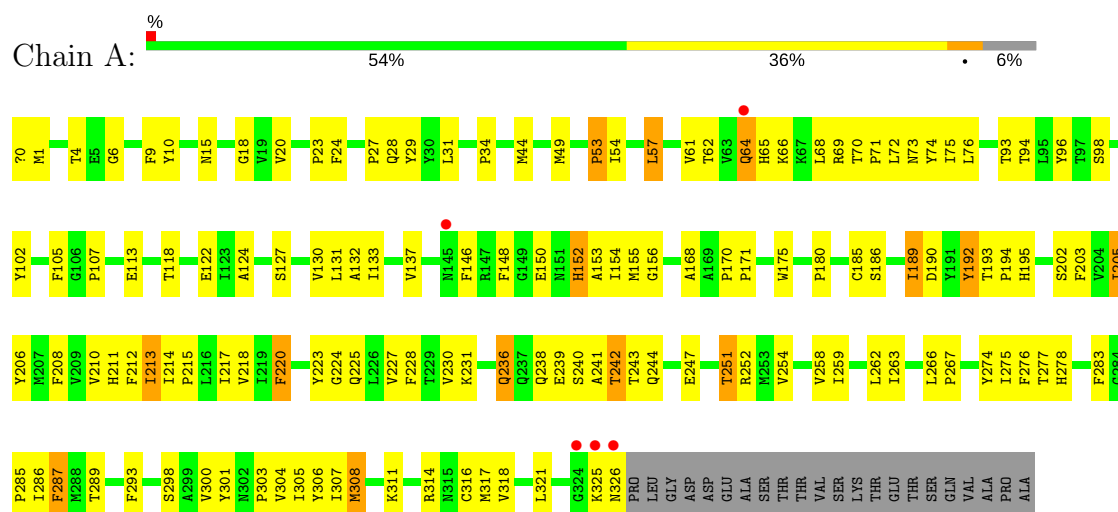
- Molecule 8 is water.

Mol	Chain	Residues	Atoms		ZeroOcc	AltConf
8	A	9	Total	O	0	0
			9	9		

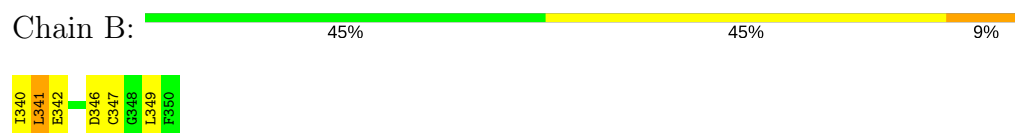
### 3 Residue-property plots [i](#)

These plots are drawn for all protein, RNA and DNA chains in the entry. The first graphic for a chain summarises the proportions of the various outlier classes displayed in the second graphic. The second graphic shows the sequence view annotated by issues in geometry and electron density. Residues are color-coded according to the number of geometric quality criteria for which they contain at least one outlier: green = 0, yellow = 1, orange = 2 and red = 3 or more. A red dot above a residue indicates a poor fit to the electron density ( $RSRZ > 2$ ). Stretches of 2 or more consecutive residues without any outlier are shown as a green connector. Residues present in the sample, but not in the model, are shown in grey.

#### • Molecule 1: RHODOPSIN



#### • Molecule 2: GUANINE NUCLEOTIDE-BINDING PROTEIN G(T) SUBUNIT ALPHA-3





## 4 Data and refinement statistics

Property	Value	Source
Space group	H 3 2	Depositor
Cell constants a, b, c, $\alpha$ , $\beta$ , $\gamma$	242.19Å 242.19Å 109.83Å 90.00° 90.00° 120.00°	Depositor
Resolution (Å)	45.77 – 3.30 45.77 – 3.30	Depositor EDS
% Data completeness (in resolution range)	94.6 (45.77-3.30) 70.8 (45.77-3.30)	Depositor EDS
$R_{merge}$	0.18	Depositor
$R_{sym}$	(Not available)	Depositor
$\langle I/\sigma(I) \rangle$ <sup>1</sup>	2.06 (at 3.32Å)	Xtriage
Refinement program	PHENIX (PHENIX.REFINE: 1.6.1_357)	Depositor
R, $R_{free}$	0.216 , 0.262 0.204 , 0.264	Depositor DCC
$R_{free}$ test set	672 reflections (5.10%)	DCC
Wilson B-factor (Å <sup>2</sup> )	73.1	Xtriage
Anisotropy	0.635	Xtriage
Bulk solvent $k_{sol}$ (e/Å <sup>3</sup> ), $B_{sol}$ (Å <sup>2</sup> )	0.31 , 54.0	EDS
L-test for twinning <sup>2</sup>	$\langle  L  \rangle = 0.44$ , $\langle L^2 \rangle = 0.26$	Xtriage
Estimated twinning fraction	No twinning to report.	Xtriage
$F_o, F_c$ correlation	0.89	EDS
Total number of atoms	2781	wwPDB-VP
Average B, all atoms (Å <sup>2</sup> )	74.0	wwPDB-VP

Xtriage's analysis on translational NCS is as follows: *The largest off-origin peak in the Patterson function is 6.78% of the height of the origin peak. No significant pseudotranslation is detected.*

<sup>1</sup>Intensities estimated from amplitudes.

<sup>2</sup>Theoretical values of  $\langle |L| \rangle$ ,  $\langle L^2 \rangle$  for acentric reflections are 0.5, 0.333 respectively for untwinned datasets, and 0.375, 0.2 for perfectly twinned datasets.

## 5 Model quality [i](#)

### 5.1 Standard geometry [i](#)

Bond lengths and bond angles in the following residue types are not validated in this section: NAG, ACE, RET, ACT, PLM, BOG

The Z score for a bond length (or angle) is the number of standard deviations the observed value is removed from the expected value. A bond length (or angle) with  $|Z| > 5$  is considered an outlier worth inspection. RMSZ is the root-mean-square of all Z scores of the bond lengths (or angles).

Mol	Chain	Bond lengths		Bond angles	
		RMSZ	$\# Z  > 5$	RMSZ	$\# Z  > 5$
1	A	0.59	0/2676	0.70	2/3647 (0.1%)
2	B	0.44	0/88	0.55	0/115
All	All	0.58	0/2764	0.70	2/3762 (0.1%)

There are no bond length outliers.

All (2) bond angle outliers are listed below:

Mol	Chain	Res	Type	Atoms	Z	Observed(°)	Ideal(°)
1	A	0	ACE	C-N-CA	14.80	158.70	121.70
1	A	0	ACE	O-C-N	-7.64	110.48	122.70

There are no chirality outliers.

There are no planarity outliers.

### 5.2 Too-close contacts [i](#)

In the following table, the Non-H and H(model) columns list the number of non-hydrogen atoms and hydrogen atoms in the chain respectively. The H(added) column lists the number of hydrogen atoms added and optimized by MolProbity. The Clashes column lists the number of clashes within the asymmetric unit, whereas Symm-Clashes lists symmetry related clashes.

Mol	Chain	Non-H	H(model)	H(added)	Clashes	Symm-Clashes
1	A	2595	0	2564	132	1
2	B	88	0	89	11	0
3	A	20	0	27	2	0
4	A	4	0	3	0	0
5	A	20	0	28	3	0
6	A	17	0	31	0	0
7	A	28	0	25	1	0

*Continued on next page...*

*Continued from previous page...*

Mol	Chain	Non-H	H(model)	H(added)	Clashes	Symm-Clashes
8	A	9	0	0	1	0
All	All	2781	0	2767	138	1

The all-atom clashscore is defined as the number of clashes found per 1000 atoms (including hydrogen atoms). The all-atom clashscore for this structure is 25.

All (138) close contacts within the same asymmetric unit are listed below, sorted by their clash magnitude.

Atom-1	Atom-2	Interatomic distance (Å)	Clash overlap (Å)
1:A:93:THR:HG21	1:A:113:GLU:HG3	1.31	1.09
1:A:236:GLN:HA	1:A:236:GLN:OE1	1.48	1.08
1:A:210:VAL:HG12	1:A:211:HIS:CD2	2.10	0.87
1:A:214:ILE:HB	1:A:215:PRO:HD3	1.59	0.82
1:A:224:GLY:N	5:A:1403:BOG:H8'2	1.94	0.82
1:A:66:LYS:HA	1:A:69:ARG:NH1	1.97	0.80
1:A:304:VAL:HA	1:A:308:MET:HG3	1.66	0.77
1:A:189:ILE:HD13	1:A:203:PHE:HE2	1.51	0.75
1:A:286:ILE:O	1:A:289:THR:HB	1.86	0.75
1:A:24:PHE:CE2	1:A:107:PRO:HG3	2.22	0.73
1:A:75:ILE:HG21	1:A:131:LEU:HD13	1.71	0.73
1:A:28:GLN:HB3	1:A:31:LEU:HD12	1.71	0.72
1:A:213:ILE:HG22	1:A:217:ILE:HD12	1.71	0.72
1:A:236:GLN:OE1	1:A:236:GLN:CA	2.30	0.71
1:A:93:THR:HG21	1:A:113:GLU:CG	2.16	0.71
1:A:170:PRO:HB2	1:A:171:PRO:HD3	1.72	0.70
1:A:27:PRO:HB3	1:A:29:TYR:CE2	2.26	0.69
1:A:6:GLY:HA3	1:A:9:PHE:CE1	2.28	0.69
3:A:401:RET:H181	3:A:401:RET:C8	2.23	0.69
1:A:208:PHE:O	1:A:212:PHE:HB3	1.94	0.66
1:A:267:PRO:HB2	8:A:2009:HOH:O	1.95	0.66
1:A:242:THR:HG22	2:B:341:LEU:HD11	1.78	0.64
1:A:314:ARG:O	1:A:318:VAL:HG23	1.97	0.64
2:B:347:CYS:CB	2:B:349:LEU:HD12	2.27	0.64
1:A:240:SER:O	1:A:244:GLN:HG2	1.98	0.64
2:B:347:CYS:HB2	2:B:349:LEU:HD12	1.81	0.63
1:A:192:TYR:N	1:A:192:TYR:CD1	2.67	0.63
1:A:175:TRP:NE1	1:A:203:PHE:HB2	2.15	0.62
1:A:57:LEU:HD21	1:A:317:MET:HG2	1.81	0.62
1:A:65:HIS:HB2	1:A:68:LEU:HD12	1.82	0.62
1:A:305:ILE:HG22	1:A:306:TYR:CD1	2.35	0.61
1:A:76:LEU:HD13	1:A:307:ILE:HD13	1.82	0.60

*Continued on next page...*

*Continued from previous page...*

Atom-1	Atom-2	Interatomic distance (Å)	Clash overlap (Å)
1:A:189:ILE:HD13	1:A:203:PHE:CE2	2.36	0.60
3:A:401:RET:H181	3:A:401:RET:H8	1.82	0.60
1:A:148:PHE:CE1	1:A:152:HIS:HB2	2.37	0.60
1:A:242:THR:CG2	2:B:341:LEU:CD1	2.79	0.59
1:A:262:LEU:O	1:A:266:LEU:HB2	2.03	0.59
1:A:210:VAL:CG1	1:A:211:HIS:CD2	2.83	0.59
1:A:66:LYS:HG3	1:A:69:ARG:HH12	1.67	0.59
1:A:242:THR:HG22	2:B:341:LEU:CD1	2.33	0.59
1:A:214:ILE:HB	1:A:215:PRO:CD	2.29	0.58
1:A:6:GLY:HA3	1:A:9:PHE:CZ	2.38	0.58
1:A:49:MET:O	1:A:53:PRO:HD2	2.03	0.58
1:A:283:PHE:HD2	1:A:287:PHE:CE1	2.22	0.57
1:A:259:ILE:O	1:A:263:ILE:HG13	2.05	0.56
1:A:72:LEU:HD23	1:A:148:PHE:CE2	2.40	0.56
1:A:4:THR:HG21	1:A:20:VAL:HG11	1.87	0.56
1:A:242:THR:CG2	2:B:341:LEU:HD13	2.36	0.56
1:A:230:VAL:HG22	2:B:340:ILE:HD12	1.86	0.56
1:A:132:ALA:HB2	1:A:223:TYR:CE2	2.42	0.55
1:A:230:VAL:HG22	2:B:340:ILE:CD1	2.37	0.54
1:A:266:LEU:HB3	1:A:267:PRO:HD3	1.90	0.54
1:A:224:GLY:H	5:A:1403:BOG:H8'2	1.69	0.54
1:A:311:LYS:HA	1:A:314:ARG:NH2	2.23	0.54
1:A:64:GLN:HB2	1:A:65:HIS:CD2	2.43	0.54
1:A:300:VAL:O	1:A:304:VAL:HG23	2.08	0.53
1:A:205:ILE:HD11	1:A:276:PHE:CZ	2.42	0.53
1:A:49:MET:O	1:A:53:PRO:CD	2.57	0.53
1:A:150:GLU:O	1:A:154:ILE:HG12	2.08	0.53
1:A:223:TYR:HB3	1:A:254:VAL:CG1	2.39	0.53
1:A:287:PHE:C	1:A:287:PHE:CD1	2.82	0.52
1:A:66:LYS:HG3	1:A:69:ARG:NH1	2.24	0.52
1:A:4:THR:HG21	7:A:1405:NAG:H82	1.91	0.52
1:A:64:GLN:N	1:A:64:GLN:HE21	2.09	0.51
1:A:175:TRP:CZ2	1:A:203:PHE:HA	2.46	0.51
1:A:241:ALA:O	1:A:244:GLN:HB2	2.11	0.51
1:A:225:GLN:O	1:A:228:PHE:HB3	2.11	0.51
1:A:283:PHE:CD2	1:A:287:PHE:CE1	2.98	0.51
1:A:193:THR:HG22	1:A:195:HIS:HB2	1.93	0.50
1:A:28:GLN:CB	1:A:31:LEU:HD12	2.39	0.50
1:A:75:ILE:CG2	1:A:131:LEU:HD13	2.40	0.50
1:A:49:MET:CE	1:A:49:MET:HA	2.41	0.50
1:A:118:THR:HG22	1:A:168:ALA:HB2	1.93	0.49

*Continued on next page...*

*Continued from previous page...*

Atom-1	Atom-2	Interatomic distance (Å)	Clash overlap (Å)
1:A:298:SER:HA	1:A:301:TYR:CE2	2.48	0.49
1:A:223:TYR:HB3	1:A:254:VAL:HG11	1.93	0.49
1:A:258:VAL:HG12	1:A:259:ILE:N	2.27	0.49
1:A:277:THR:O	1:A:278:HIS:ND1	2.46	0.49
1:A:242:THR:HG22	1:A:243:THR:N	2.27	0.48
2:B:347:CYS:HB3	2:B:349:LEU:HD12	1.95	0.48
1:A:24:PHE:HE1	1:A:180:PRO:HG3	1.79	0.48
1:A:180:PRO:HA	1:A:186:SER:O	2.14	0.47
1:A:64:GLN:HA	1:A:64:GLN:NE2	2.30	0.47
1:A:28:GLN:O	1:A:31:LEU:HB2	2.14	0.47
1:A:24:PHE:CD2	1:A:107:PRO:HG3	2.49	0.47
1:A:62:THR:HG22	1:A:62:THR:O	2.14	0.47
1:A:190:ASP:OD2	1:A:193:THR:HB	2.15	0.46
1:A:64:GLN:CA	1:A:64:GLN:HE21	2.28	0.46
1:A:74:TYR:CD2	1:A:153:ALA:HB1	2.51	0.46
1:A:65:HIS:CD2	1:A:316:CYS:HB3	2.50	0.46
1:A:220:PHE:HA	5:A:1403:BOG:HS'1	1.96	0.46
1:A:155:MET:O	1:A:156:GLY:C	2.54	0.46
1:A:10:TYR:CD1	1:A:10:TYR:C	2.89	0.46
1:A:124:ALA:O	1:A:127:SER:HB2	2.16	0.46
1:A:44:MET:HG3	1:A:94:THR:HG22	1.98	0.46
1:A:189:ILE:CD1	1:A:203:PHE:HE2	2.24	0.45
1:A:231:LYS:HA	1:A:247:GLU:HG3	1.97	0.45
1:A:15:ASN:OD1	1:A:18:GLY:HA2	2.15	0.45
1:A:230:VAL:CG1	1:A:247:GLU:HA	2.46	0.45
2:B:340:ILE:O	2:B:342:GLU:N	2.50	0.45
1:A:23:PRO:O	1:A:102:TYR:HB2	2.17	0.45
1:A:210:VAL:HG12	1:A:211:HIS:HD2	1.75	0.45
1:A:29:TYR:CD1	1:A:34:PRO:HG3	2.52	0.45
1:A:170:PRO:CB	1:A:171:PRO:HD3	2.42	0.44
1:A:98:SER:HA	1:A:185:CYS:SG	2.58	0.44
1:A:210:VAL:CG1	1:A:211:HIS:HD2	2.31	0.44
1:A:64:GLN:CA	1:A:64:GLN:NE2	2.80	0.44
1:A:303:PRO:O	1:A:307:ILE:HB	2.17	0.44
1:A:96:TYR:HD2	1:A:105:PHE:CZ	2.35	0.44
1:A:130:VAL:HA	1:A:133:ILE:HD12	1.99	0.44
1:A:146:PHE:HZ	1:A:152:HIS:CD2	2.35	0.44
1:A:266:LEU:HA	1:A:266:LEU:HD12	1.55	0.44
1:A:231:LYS:NZ	1:A:247:GLU:OE2	2.50	0.43
1:A:57:LEU:CD1	1:A:321:LEU:HD21	2.48	0.43
1:A:66:LYS:HA	1:A:69:ARG:CZ	2.46	0.43

*Continued on next page...*

Continued from previous page...

Atom-1	Atom-2	Interatomic distance (Å)	Clash overlap (Å)
1:A:31:LEU:HD22	1:A:285:PRO:HG3	2.01	0.43
1:A:274:TYR:CD1	1:A:274:TYR:C	2.92	0.43
1:A:31:LEU:CD2	1:A:285:PRO:HG3	2.49	0.43
1:A:146:PHE:CZ	1:A:152:HIS:CD2	3.06	0.43
1:A:227:VAL:O	1:A:231:LYS:HG3	2.18	0.42
1:A:72:LEU:HD12	2:B:346:ASP:HB3	2.00	0.42
1:A:93:THR:HG22	1:A:94:THR:N	2.34	0.42
1:A:208:PHE:CE2	1:A:213:ILE:HD11	2.55	0.42
1:A:133:ILE:O	1:A:137:VAL:HG23	2.19	0.42
1:A:217:ILE:HG22	1:A:218:VAL:N	2.34	0.42
1:A:193:THR:HA	1:A:194:PRO:HD3	1.81	0.41
1:A:70:THR:O	1:A:73:ASN:HB2	2.20	0.41
1:A:325:LYS:O	1:A:326:ASN:HB2	2.21	0.41
1:A:122:GLU:OE1	1:A:211:HIS:ND1	2.47	0.41
1:A:298:SER:HA	1:A:301:TYR:CD2	2.55	0.41
1:A:96:TYR:CD2	1:A:105:PHE:HZ	2.39	0.41
1:A:214:ILE:CB	1:A:215:PRO:CD	2.97	0.41
1:A:251:THR:HG22	1:A:252:ARG:N	2.36	0.41
1:A:66:LYS:HA	1:A:69:ARG:HH12	1.80	0.41
1:A:49:MET:O	1:A:53:PRO:HG2	2.21	0.40
1:A:192:TYR:HA	1:A:275:ILE:HG21	2.04	0.40
1:A:31:LEU:HD22	1:A:285:PRO:CB	2.52	0.40
1:A:210:VAL:HA	1:A:214:ILE:HG12	2.02	0.40
1:A:54:ILE:CG2	1:A:303:PRO:HB2	2.51	0.40

All (1) symmetry-related close contacts are listed below. The label for Atom-2 includes the symmetry operator and encoded unit-cell translations to be applied.

Atom-1	Atom-2	Interatomic distance (Å)	Clash overlap (Å)
1:A:65:HIS:ND1	1:A:239:GLU:OE1[3_555]	2.12	0.08

## 5.3 Torsion angles [i](#)

### 5.3.1 Protein backbone [i](#)

In the following table, the Percentiles column shows the percent Ramachandran outliers of the chain as a percentile score with respect to all X-ray entries followed by that with respect to entries of similar resolution.

The Analysed column shows the number of residues for which the backbone conformation was

analysed, and the total number of residues.

Mol	Chain	Analysed	Favoured	Allowed	Outliers	Percentiles	
1	A	325/349 (93%)	268 (82%)	56 (17%)	1 (0%)	44	76
2	B	9/11 (82%)	8 (89%)	0	1 (11%)	0	3
All	All	334/360 (93%)	276 (83%)	56 (17%)	2 (1%)	28	63

All (2) Ramachandran outliers are listed below:

Mol	Chain	Res	Type
2	B	341	LEU
1	A	53	PRO

### 5.3.2 Protein sidechains ⓘ

In the following table, the Percentiles column shows the percent sidechain outliers of the chain as a percentile score with respect to all X-ray entries followed by that with respect to entries of similar resolution.

The Analysed column shows the number of residues for which the sidechain conformation was analysed, and the total number of residues.

Mol	Chain	Analysed	Rotameric	Outliers	Percentiles	
1	A	278/296 (94%)	258 (93%)	20 (7%)	17	50
2	B	10/10 (100%)	10 (100%)	0	100	100
All	All	288/306 (94%)	268 (93%)	20 (7%)	18	53

All (20) residues with a non-rotameric sidechain are listed below:

Mol	Chain	Res	Type
1	A	1	MET
1	A	57	LEU
1	A	61	VAL
1	A	64	GLN
1	A	71	PRO
1	A	152	HIS
1	A	189	ILE
1	A	192	TYR
1	A	202	SER
1	A	205	ILE
1	A	206	TYR
1	A	213	ILE

*Continued on next page...*

*Continued from previous page...*

Mol	Chain	Res	Type
1	A	220	PHE
1	A	236	GLN
1	A	238	GLN
1	A	242	THR
1	A	251	THR
1	A	287	PHE
1	A	293	PHE
1	A	308	MET

Some sidechains can be flipped to improve hydrogen bonding and reduce clashes. All (4) such sidechains are listed below:

Mol	Chain	Res	Type
1	A	28	GLN
1	A	64	GLN
1	A	65	HIS
1	A	100	HIS

### 5.3.3 RNA ⓘ

There are no RNA molecules in this entry.

## 5.4 Non-standard residues in protein, DNA, RNA chains ⓘ

There are no non-standard protein/DNA/RNA residues in this entry.

## 5.5 Carbohydrates ⓘ

2 carbohydrates are modelled in this entry.

In the following table, the Counts columns list the number of bonds (or angles) for which Mogul statistics could be retrieved, the number of bonds (or angles) that are observed in the model and the number of bonds (or angles) that are defined in the chemical component dictionary. The Link column lists molecule types, if any, to which the group is linked. The Z score for a bond length (or angle) is the number of standard deviations the observed value is removed from the expected value. A bond length (or angle) with  $|Z| > 2$  is considered an outlier worth inspection. RMSZ is the root-mean-square of all Z scores of the bond lengths (or angles).

Mol	Type	Chain	Res	Link	Bond lengths			Bond angles		
					Counts	RMSZ	$\# Z  > 2$	Counts	RMSZ	$\# Z  > 2$
7	NAG	A	1405	1,7	14,14,15	0.55	0	15,19,21	3.11	7 (46%)



Mol	Type	Chain	Res	Link	Bond lengths			Bond angles		
					Counts	RMSZ	# Z  > 2	Counts	RMSZ	# Z  > 2
7	NAG	A	1406	7	14,14,15	0.81	0	15,19,21	1.92	3 (20%)

In the following table, the Chirals column lists the number of chiral outliers, the number of chiral centers analysed, the number of these observed in the model and the number defined in the chemical component dictionary. Similar counts are reported in the Torsion and Rings columns. '-' means no outliers of that kind were identified.

Mol	Type	Chain	Res	Link	Chirals	Torsions	Rings
7	NAG	A	1405	1,7	-	0/6/23/26	0/1/1/1
7	NAG	A	1406	7	-	0/6/23/26	0/1/1/1

There are no bond length outliers.

All (10) bond angle outliers are listed below:

Mol	Chain	Res	Type	Atoms	Z	Observed(°)	Ideal(°)
7	A	1405	NAG	O4-C4-C3	-3.34	103.09	110.36
7	A	1405	NAG	O7-C7-C8	-2.38	117.72	122.06
7	A	1405	NAG	O3-C3-C2	-2.14	104.79	109.39
7	A	1405	NAG	O7-C7-N2	2.27	126.28	121.92
7	A	1406	NAG	C8-C7-N2	2.46	120.54	116.11
7	A	1405	NAG	C2-N2-C7	3.29	127.75	122.94
7	A	1406	NAG	O4-C4-C5	3.79	118.84	109.28
7	A	1406	NAG	C1-O5-C5	4.73	118.69	112.17
7	A	1405	NAG	O5-C1-C2	5.85	119.62	111.47
7	A	1405	NAG	C1-O5-C5	8.10	123.34	112.17

There are no chirality outliers.

There are no torsion outliers.

There are no ring outliers.

1 monomer is involved in 1 short contact:

Mol	Chain	Res	Type	Clashes	Symm-Clashes
7	A	1405	NAG	1	0

## 5.6 Ligand geometry

4 ligands are modelled in this entry.

In the following table, the Counts columns list the number of bonds (or angles) for which Mogul statistics could be retrieved, the number of bonds (or angles) that are observed in the model and

the number of bonds (or angles) that are defined in the chemical component dictionary. The Link column lists molecule types, if any, to which the group is linked. The Z score for a bond length (or angle) is the number of standard deviations the observed value is removed from the expected value. A bond length (or angle) with  $|Z| > 2$  is considered an outlier worth inspection. RMSZ is the root-mean-square of all Z scores of the bond lengths (or angles).

Mol	Type	Chain	Res	Link	Bond lengths			Bond angles		
					Counts	RMSZ	# Z  > 2	Counts	RMSZ	# Z  > 2
4	ACT	A	1402	-	1,3,3	2.49	1 (100%)	0,3,3	0.00	-
5	BOG	A	1403	-	20,20,20	0.70	1 (5%)	25,25,25	1.33	2 (8%)
6	PLM	A	1404	1	16,16,17	0.91	1 (6%)	15,15,17	1.19	1 (6%)
3	RET	A	401	1	19,20,21	0.90	2 (10%)	27,27,28	2.17	9 (33%)

In the following table, the Chirals column lists the number of chiral outliers, the number of chiral centers analysed, the number of these observed in the model and the number defined in the chemical component dictionary. Similar counts are reported in the Torsion and Rings columns. '-' means no outliers of that kind were identified.

Mol	Type	Chain	Res	Link	Chirals	Torsions	Rings
4	ACT	A	1402	-	-	0/0/0/0	0/0/0/0
5	BOG	A	1403	-	-	0/11/31/31	0/1/1/1
6	PLM	A	1404	1	-	0/13/14/15	0/0/0/0
3	RET	A	401	1	-	0/13/30/31	0/1/1/1

All (5) bond length outliers are listed below:

Mol	Chain	Res	Type	Atoms	Z	Observed(Å)	Ideal(Å)
3	A	401	RET	C12-C13	2.01	1.50	1.45
3	A	401	RET	C8-C9	2.10	1.50	1.45
5	A	1403	BOG	O1-C1	2.11	1.43	1.40
4	A	1402	ACT	CH3-C	2.49	1.52	1.48
6	A	1404	PLM	C2-C1	2.76	1.57	1.49

All (12) bond angle outliers are listed below:

Mol	Chain	Res	Type	Atoms	Z	Observed(°)	Ideal(°)
3	A	401	RET	C11-C10-C9	-5.14	119.97	127.31
3	A	401	RET	C18-C5-C6	-4.54	119.43	124.51
3	A	401	RET	C7-C8-C9	-4.13	120.01	126.21
3	A	401	RET	C19-C9-C10	-2.87	118.90	122.92
6	A	1404	PLM	C3-C2-C1	-2.22	106.96	113.05
5	A	1403	BOG	O1-C1'-C2'	-2.09	102.22	109.68
3	A	401	RET	C20-C13-C14	-2.05	117.51	123.66

*Continued on next page...*

*Continued from previous page...*

Mol	Chain	Res	Type	Atoms	Z	Observed(°)	Ideal(°)
3	A	401	RET	C18-C5-C4	2.21	117.65	113.45
3	A	401	RET	C20-C13-C12	2.39	121.91	118.10
3	A	401	RET	C17-C1-C6	2.60	114.53	110.31
3	A	401	RET	C19-C9-C8	2.86	122.66	118.10
5	A	1403	BOG	C1'-O1-C1	4.63	121.82	113.87

There are no chirality outliers.

There are no torsion outliers.

There are no ring outliers.

2 monomers are involved in 5 short contacts:

Mol	Chain	Res	Type	Clashes	Symm-Clashes
5	A	1403	BOG	3	0
3	A	401	RET	2	0

## 5.7 Other polymers [i](#)

There are no such residues in this entry.

## 5.8 Polymer linkage issues [i](#)

There are no chain breaks in this entry.

## 6 Fit of model and data [i](#)

### 6.1 Protein, DNA and RNA chains [i](#)

In the following table, the column labelled ‘#RSRZ> 2’ contains the number (and percentage) of RSRZ outliers, followed by percent RSRZ outliers for the chain as percentile scores relative to all X-ray entries and entries of similar resolution. The OWAB column contains the minimum, median, 95<sup>th</sup> percentile and maximum values of the occupancy-weighted average B-factor per residue. The column labelled ‘Q< 0.9’ lists the number of (and percentage) of residues with an average occupancy less than 0.9.

Mol	Chain	Analysed	<RSRZ>	#RSRZ>2	OWAB(Å <sup>2</sup> )	Q<0.9
1	A	326/349 (93%)	-0.37	5 (1%) 74 70	48, 71, 97, 135	0
2	B	11/11 (100%)	-0.57	0 100 100	82, 91, 95, 102	0
All	All	337/360 (93%)	-0.37	5 (1%) 74 70	48, 72, 98, 135	0

All (5) RSRZ outliers are listed below:

Mol	Chain	Res	Type	RSRZ
1	A	326	ASN	3.4
1	A	324	GLY	3.0
1	A	64	GLN	2.3
1	A	325	LYS	2.2
1	A	145	ASN	2.0

### 6.2 Non-standard residues in protein, DNA, RNA chains [i](#)

There are no non-standard protein/DNA/RNA residues in this entry.

### 6.3 Carbohydrates [i](#)

In the following table, the Atoms column lists the number of modelled atoms in the group and the number defined in the chemical component dictionary. LLDF column lists the quality of electron density of the group with respect to its neighbouring residues in protein, DNA or RNA chains. The B-factors column lists the minimum, median, 95<sup>th</sup> percentile and maximum values of B factors of atoms in the group. The column labelled ‘Q< 0.9’ lists the number of atoms with occupancy less than 0.9.

Mol	Type	Chain	Res	Atoms	RSCC	RSR	LLDF	B-factors(Å <sup>2</sup> )	Q<0.9
7	NAG	A	1405	14/15	0.98	0.13	-2.29	53,56,59,60	0
7	NAG	A	1406	14/15	0.94	0.23	-	41,48,52,63	0

## 6.4 Ligands [i](#)

In the following table, the Atoms column lists the number of modelled atoms in the group and the number defined in the chemical component dictionary. LLDF column lists the quality of electron density of the group with respect to its neighbouring residues in protein, DNA or RNA chains. The B-factors column lists the minimum, median, 95<sup>th</sup> percentile and maximum values of B factors of atoms in the group. The column labelled 'Q< 0.9' lists the number of atoms with occupancy less than 0.9.

Mol	Type	Chain	Res	Atoms	RSCC	RSR	LLDF	B-factors(Å <sup>2</sup> )	Q<0.9
4	ACT	A	1402	4/4	0.94	0.39	5.56	74,78,83,86	0
3	RET	A	401	20/21	0.92	0.33	5.02	87,100,110,113	0
6	PLM	A	1404	17/18	0.93	0.28	2.10	56,65,106,109	0
5	BOG	A	1403	20/20	0.94	0.25	1.71	65,111,124,125	0

## 6.5 Other polymers [i](#)

There are no such residues in this entry.