



Full wwPDB X-ray Structure Validation Report ⓘ

Feb 13, 2017 – 04:34 am GMT

PDB ID : 2A9Z
Title : Crystal structure of T. gondii adenosine kinase complexed with N6-dimethyladenosine and AMP-PCP
Authors : Zhang, Y.; el Kouni, M.H.; Ealick, S.E.
Deposited on : 2005-07-12
Resolution : 1.35 Å(reported)

This is a Full wwPDB X-ray Structure Validation Report for a publicly released PDB entry.

We welcome your comments at validation@mail.wwpdb.org

A user guide is available at

<http://wwpdb.org/validation/2016/XrayValidationReportHelp>

with specific help available everywhere you see the ⓘ symbol.

The following versions of software and data (see [references ⓘ](#)) were used in the production of this report:

MolProbity : 4.02b-467
Mogul : 1.7.2 (RC1), CSD as538be (2017)
Xtriage (Phenix) : 1.9-1692
EDS : trunk28620
Percentile statistics : 20161228.v01 (using entries in the PDB archive December 28th 2016)
Refmac : 5.8.0135
CCP4 : 6.5.0
Ideal geometry (proteins) : Engh & Huber (2001)
Ideal geometry (DNA, RNA) : Parkinson et al. (1996)
Validation Pipeline (wwPDB-VP) : recalc28949

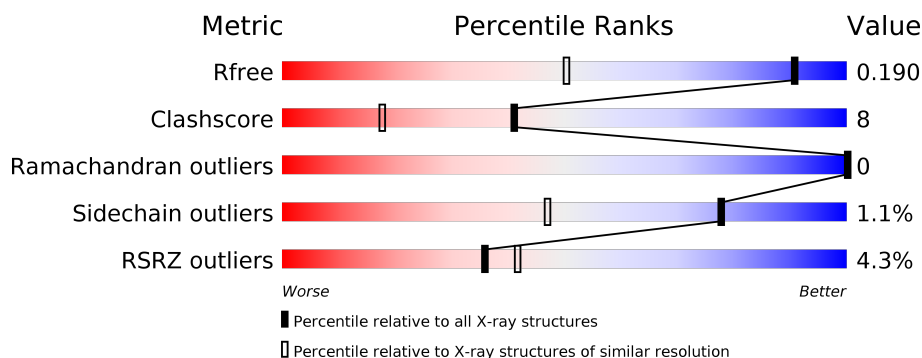
1 Overall quality at a glance

The following experimental techniques were used to determine the structure:

X-RAY DIFFRACTION

The reported resolution of this entry is 1.35 Å.

Percentile scores (ranging between 0-100) for global validation metrics of the entry are shown in the following graphic. The table shows the number of entries on which the scores are based.



Metric	Whole archive (#Entries)	Similar resolution (#Entries, resolution range(Å))
R_{free}	100719	1024 (1.38-1.34)
Clashscore	112137	1063 (1.38-1.34)
Ramachandran outliers	110173	1048 (1.38-1.34)
Sidechain outliers	110143	1048 (1.38-1.34)
RSRZ outliers	101464	1025 (1.38-1.34)

The table below summarises the geometric issues observed across the polymeric chains and their fit to the electron density. The red, orange, yellow and green segments on the lower bar indicate the fraction of residues that contain outliers for ≥ 3 , 2, 1 and 0 types of geometric quality criteria. A grey segment represents the fraction of residues that are not modelled. The numeric value for each fraction is indicated below the corresponding segment, with a dot representing fractions $\leq 5\%$. The upper red bar (where present) indicates the fraction of residues that have poor fit to the electron density. The numeric value is given above the bar.

Mol	Chain	Length	Quality of chain
1	A	383	<div> <div>4%</div> <div>78%</div> <div>14%</div> <div>8%</div> </div>

2 Entry composition

There are 6 unique types of molecules in this entry. The entry contains 3116 atoms, of which 0 are hydrogens and 0 are deuteriums.

In the tables below, the ZeroOcc column contains the number of atoms modelled with zero occupancy, the AltConf column contains the number of residues with at least one atom in alternate conformation and the Trace column contains the number of residues modelled with at most 2 atoms.

- Molecule 1 is a protein called adenosine kinase.

Mol	Chain	Residues	Atoms					ZeroOcc	AltConf	Trace
1	A	351	Total	C	N	O	S	0	13	0
			2658	1694	448	499	17			

There are 25 discrepancies between the modelled and reference sequences:

Chain	Residue	Modelled	Actual	Comment	Reference
A	-19	MET	-	EXPRESSION TAG	UNP Q9TVW2
A	-18	GLY	-	EXPRESSION TAG	UNP Q9TVW2
A	-17	SER	-	EXPRESSION TAG	UNP Q9TVW2
A	-16	SER	-	EXPRESSION TAG	UNP Q9TVW2
A	-15	HIS	-	EXPRESSION TAG	UNP Q9TVW2
A	-14	HIS	-	EXPRESSION TAG	UNP Q9TVW2
A	-13	HIS	-	EXPRESSION TAG	UNP Q9TVW2
A	-12	HIS	-	EXPRESSION TAG	UNP Q9TVW2
A	-11	HIS	-	EXPRESSION TAG	UNP Q9TVW2
A	-10	HIS	-	EXPRESSION TAG	UNP Q9TVW2
A	-9	SER	-	EXPRESSION TAG	UNP Q9TVW2
A	-8	SER	-	EXPRESSION TAG	UNP Q9TVW2
A	-7	GLY	-	EXPRESSION TAG	UNP Q9TVW2
A	-6	LEU	-	EXPRESSION TAG	UNP Q9TVW2
A	-5	VAL	-	EXPRESSION TAG	UNP Q9TVW2
A	-4	PRO	-	EXPRESSION TAG	UNP Q9TVW2
A	-3	ARG	-	EXPRESSION TAG	UNP Q9TVW2
A	-2	GLY	-	EXPRESSION TAG	UNP Q9TVW2
A	-1	SER	-	EXPRESSION TAG	UNP Q9TVW2
A	0	HIS	-	EXPRESSION TAG	UNP Q9TVW2
A	270	SER	GLY	ENGINEERED	UNP Q9TVW2
A	360	PHE	SER	ENGINEERED	UNP Q9TVW2
A	361	THR	LEU	ENGINEERED	UNP Q9TVW2
A	362	SER	PRO	ENGINEERED	UNP Q9TVW2
A	363	GLY	CYS	ENGINEERED	UNP Q9TVW2

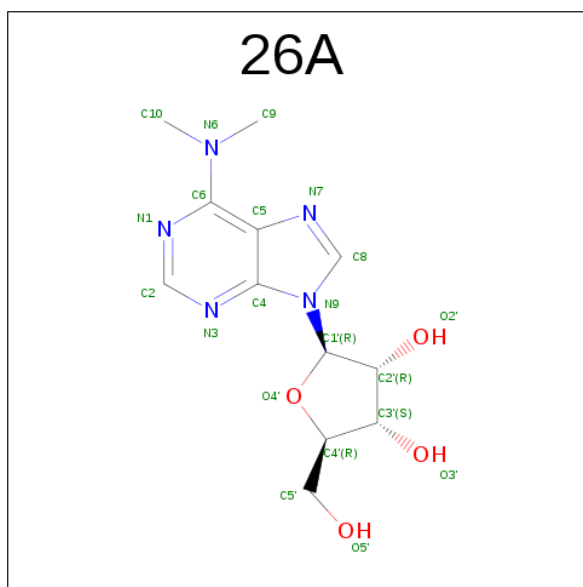
- Molecule 2 is CHLORIDE ION (three-letter code: CL) (formula: Cl).

Mol	Chain	Residues	Atoms		ZeroOcc	AltConf
2	A	1	Total	Cl	0	0
			1	1		

- Molecule 3 is SODIUM ION (three-letter code: NA) (formula: Na).

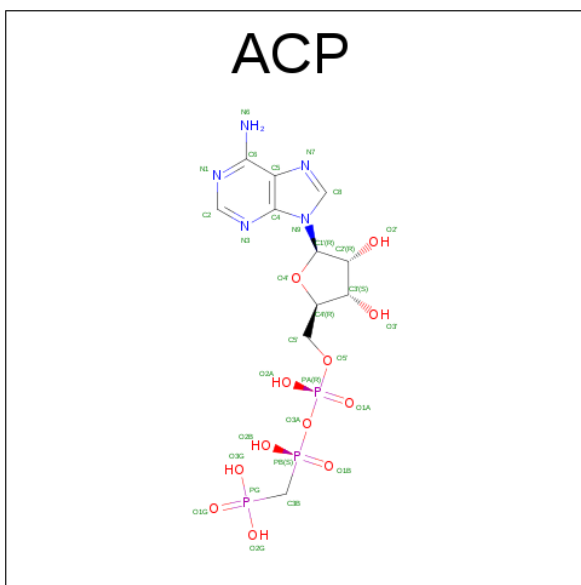
Mol	Chain	Residues	Atoms		ZeroOcc	AltConf
3	A	2	Total	Na	0	0
			2	2		

- Molecule 4 is 6N-DIMETHYLADENOSINE (three-letter code: 26A) (formula: C₁₂H₁₇N₅O₄).



Mol	Chain	Residues	Atoms				ZeroOcc	AltConf
4	A	1	Total	C	N	O	0	0
			21	12	5	4		
4	A	1	Total	C	N	O	0	1
			21	12	5	4		

- Molecule 5 is PHOSPHOMETHYLPHOSPHONIC ACID ADENYLATE ESTER (three-letter code: ACP) (formula: C₁₁H₁₈N₅O₁₂P₃).



Mol	Chain	Residues	Atoms					ZeroOcc	AltConf
5	A	1	Total	C	N	O	P	0	1
			31	11	5	12	3		

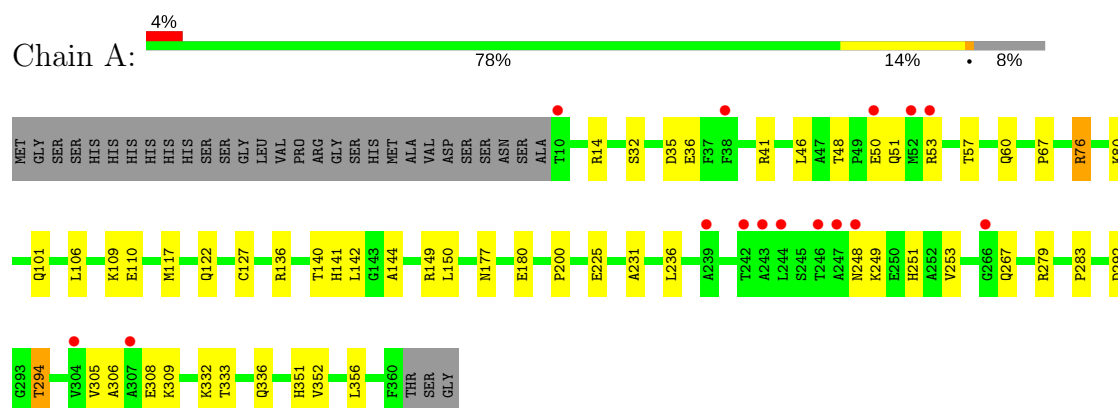
- Molecule 6 is water.

Mol	Chain	Residues	Atoms	ZeroOcc	AltConf
6	A	382	Total O 382 382	0	0

3 Residue-property plots [i](#)

These plots are drawn for all protein, RNA and DNA chains in the entry. The first graphic for a chain summarises the proportions of the various outlier classes displayed in the second graphic. The second graphic shows the sequence view annotated by issues in geometry and electron density. Residues are color-coded according to the number of geometric quality criteria for which they contain at least one outlier: green = 0, yellow = 1, orange = 2 and red = 3 or more. A red dot above a residue indicates a poor fit to the electron density ($RSRZ > 2$). Stretches of 2 or more consecutive residues without any outlier are shown as a green connector. Residues present in the sample, but not in the model, are shown in grey.

- Molecule 1: adenosine kinase



4 Data and refinement statistics

Property	Value	Source
Space group	P 21 21 21	Depositor
Cell constants a, b, c, α , β , γ	60.07Å 61.59Å 91.65Å 90.00° 90.00° 90.00°	Depositor
Resolution (Å)	10.00 – 1.35 30.79 – 1.28	Depositor EDS
% Data completeness (in resolution range)	86.0 (10.00-1.35) 86.7 (30.79-1.28)	Depositor EDS
R_{merge}	(Not available)	Depositor
R_{sym}	0.04	Depositor
$\langle I/\sigma(I) \rangle$ ¹	2.93 (at 1.28Å)	Xtriage
Refinement program	SHELXL-97	Depositor
R, R_{free}	0.137 , 0.196 0.137 , 0.190	Depositor DCC
R_{free} test set	5340 reflections (8.25%)	DCC
Wilson B-factor (Å ²)	11.0	Xtriage
Anisotropy	0.673	Xtriage
Bulk solvent k_{sol} (e/Å ³), B_{sol} (Å ²)	0.34 , 55.2	EDS
L-test for twinning ²	$\langle L \rangle = 0.50$, $\langle L^2 \rangle = 0.33$	Xtriage
Estimated twinning fraction	0.017 for k,h,-l	Xtriage
F_o, F_c correlation	0.98	EDS
Total number of atoms	3116	wwPDB-VP
Average B, all atoms (Å ²)	21.0	wwPDB-VP

Xtriage's analysis on translational NCS is as follows: *The largest off-origin peak in the Patterson function is 5.86% of the height of the origin peak. No significant pseudotranslation is detected.*

¹Intensities estimated from amplitudes.

²Theoretical values of $\langle |L| \rangle$, $\langle L^2 \rangle$ for acentric reflections are 0.5, 0.333 respectively for untwinned datasets, and 0.375, 0.2 for perfectly twinned datasets.

5 Model quality [i](#)

5.1 Standard geometry [i](#)

Bond lengths and bond angles in the following residue types are not validated in this section: NA, 26A, ACP, CL

The Z score for a bond length (or angle) is the number of standard deviations the observed value is removed from the expected value. A bond length (or angle) with $|Z| > 5$ is considered an outlier worth inspection. RMSZ is the root-mean-square of all Z scores of the bond lengths (or angles).

Mol	Chain	Bond lengths		Bond angles	
		RMSZ	$\# Z > 5$	RMSZ	$\# Z > 5$
1	A	0.58	0/2757	1.14	8/3750 (0.2%)

There are no bond length outliers.

All (8) bond angle outliers are listed below:

Mol	Chain	Res	Type	Atoms	Z	Observed(°)	Ideal(°)
1	A	149	ARG	NE-CZ-NH2	-10.58	115.01	120.30
1	A	149	ARG	NE-CZ-NH1	9.12	124.86	120.30
1	A	53	ARG	NE-CZ-NH2	-8.63	115.98	120.30
1	A	41	ARG	NE-CZ-NH1	-6.80	116.90	120.30
1	A	76	ARG	NE-CZ-NH1	-6.31	117.14	120.30
1	A	136	ARG	NE-CZ-NH1	-5.48	117.56	120.30
1	A	35	ASP	CB-CG-OD1	5.20	122.98	118.30
1	A	53	ARG	NE-CZ-NH1	5.08	122.84	120.30

There are no chirality outliers.

There are no planarity outliers.

5.2 Too-close contacts [i](#)

In the following table, the Non-H and H(model) columns list the number of non-hydrogen atoms and hydrogen atoms in the chain respectively. The H(added) column lists the number of hydrogen atoms added and optimized by MolProbity. The Clashes column lists the number of clashes within the asymmetric unit, whereas Symm-Clashes lists symmetry related clashes.

Mol	Chain	Non-H	H(model)	H(added)	Clashes	Symm-Clashes
1	A	2658	0	2656	40	0
2	A	1	0	0	1	0
3	A	2	0	0	0	0

Continued on next page...

Continued from previous page...

Mol	Chain	Non-H	H(model)	H(added)	Clashes	Symm-Clashes
4	A	42	0	34	5	0
5	A	31	0	14	1	0
6	A	382	0	0	10	0
All	All	3116	0	2704	44	0

The all-atom clashscore is defined as the number of clashes found per 1000 atoms (including hydrogen atoms). The all-atom clashscore for this structure is 8.

All (44) close contacts within the same asymmetric unit are listed below, sorted by their clash magnitude.

Atom-1	Atom-2	Interatomic distance (Å)	Clash overlap (Å)
1:A:305:VAL:HG13	1:A:309:LYS:HZ1	1.32	0.94
1:A:292:ASP:OD1	1:A:294[A]:THR:HG22	1.82	0.79
1:A:248:ASN:HD22	1:A:251:HIS:H	1.34	0.74
1:A:122:GLN:HE21	1:A:144:ALA:HA	1.55	0.71
1:A:306:ALA:HB1	1:A:308:GLU:OE2	1.91	0.70
1:A:333:THR:H	1:A:336:GLN:HE21	1.38	0.69
1:A:57:THR:O	1:A:60:GLN:HG2	1.94	0.67
1:A:180[B]:GLU:HG3	6:A:5184:HOH:O	2.01	0.60
4:A:1001:26A:H91	4:A:1001:26A:N7	2.16	0.60
1:A:67:PRO:HD3	1:A:106:LEU:HD13	1.84	0.59
1:A:141:HIS:HD2	6:A:5056:HOH:O	1.85	0.59
1:A:50[A]:GLU:HG2	6:A:5093:HOH:O	2.07	0.54
1:A:48:THR:H	1:A:51:GLN:NE2	2.06	0.54
1:A:142:LEU:HD11	4:A:1001:26A:H102	1.91	0.53
1:A:127:CYS:HB2	1:A:140[A]:THR:HG22	1.91	0.52
1:A:150:LEU:H	1:A:177:ASN:ND2	2.08	0.52
1:A:305:VAL:HG13	1:A:309:LYS:NZ	2.14	0.51
1:A:80:LYS:HD3	1:A:356:LEU:HB2	1.93	0.50
4:A:1002[A]:26A:N7	4:A:1002[A]:26A:H91	2.25	0.50
5:A:1005[B]:ACP:H3B1	5:A:1005[B]:ACP:O1A	2.12	0.50
1:A:248:ASN:ND2	1:A:251:HIS:H	2.07	0.50
1:A:140[A]:THR:HG23	6:A:5019:HOH:O	2.12	0.48
1:A:351:HIS:HD2	1:A:352:VAL:O	1.96	0.48
1:A:32:SER:O	1:A:36:GLU:HG3	2.13	0.48
1:A:48:THR:H	1:A:51:GLN:HE21	1.62	0.47
1:A:333:THR:H	1:A:336:GLN:NE2	2.09	0.47
1:A:200:PRO:HG3	1:A:225:GLU:HG3	1.97	0.47
1:A:106:LEU:O	1:A:109:LYS:HG2	2.14	0.47
1:A:306:ALA:H	1:A:309:LYS:HE2	1.81	0.46
1:A:46:LEU:HD21	4:A:1001:26A:H93	1.97	0.46

Continued on next page...

Continued from previous page...

Atom-1	Atom-2	Interatomic distance (Å)	Clash overlap (Å)
1:A:122:GLN:NE2	1:A:144:ALA:HA	2.27	0.46
1:A:294[A]:THR:HG23	6:A:5306:HOH:O	2.15	0.46
2:A:2001:CL:CL	4:A:1001:26A:H2	2.53	0.46
1:A:80:LYS:HD3	1:A:356:LEU:HD12	1.97	0.46
1:A:279:ARG:HD3	1:A:283:PRO:O	2.16	0.45
1:A:14[A]:ARG:NH2	6:A:5361:HOH:O	2.50	0.45
1:A:332:LYS:NZ	6:A:5371:HOH:O	2.50	0.45
1:A:101:GLN:HG2	6:A:5158:HOH:O	2.18	0.44
1:A:14[A]:ARG:NH2	6:A:5176:HOH:O	2.50	0.44
1:A:249:LYS:HZ3	1:A:253:VAL:HG21	1.83	0.43
1:A:127:CYS:CB	1:A:140[A]:THR:HG22	2.48	0.43
1:A:76:ARG:HD2	1:A:110:GLU:OE2	2.20	0.42
1:A:231:ALA:HA	1:A:236:LEU:HD12	2.02	0.40
1:A:309:LYS:NZ	6:A:5086:HOH:O	2.49	0.40

There are no symmetry-related clashes.

5.3 Torsion angles [i](#)

5.3.1 Protein backbone [i](#)

In the following table, the Percentiles column shows the percent Ramachandran outliers of the chain as a percentile score with respect to all X-ray entries followed by that with respect to entries of similar resolution.

The Analysed column shows the number of residues for which the backbone conformation was analysed, and the total number of residues.

Mol	Chain	Analysed	Favoured	Allowed	Outliers	Percentiles	
1	A	362/383 (94%)	354 (98%)	8 (2%)	0	100	100

There are no Ramachandran outliers to report.

5.3.2 Protein sidechains [i](#)

In the following table, the Percentiles column shows the percent sidechain outliers of the chain as a percentile score with respect to all X-ray entries followed by that with respect to entries of similar resolution.

The Analysed column shows the number of residues for which the sidechain conformation was analysed, and the total number of residues.

Mol	Chain	Analysed	Rotameric	Outliers	Percentiles
1	A	287/304 (94%)	282 (98%)	5 (2%)	66 30

All (5) residues with a non-rotameric sidechain are listed below:

Mol	Chain	Res	Type
1	A	117[A]	MET
1	A	117[B]	MET
1	A	267	GLN
1	A	294[A]	THR
1	A	294[B]	THR

Some sidechains can be flipped to improve hydrogen bonding and reduce clashes. All (12) such sidechains are listed below:

Mol	Chain	Res	Type
1	A	51	GLN
1	A	62	ASN
1	A	101	GLN
1	A	122	GLN
1	A	141	HIS
1	A	177	ASN
1	A	211	GLN
1	A	229	HIS
1	A	248	ASN
1	A	336	GLN
1	A	342	ASN
1	A	351	HIS

5.3.3 RNA ⓘ

There are no RNA molecules in this entry.

5.4 Non-standard residues in protein, DNA, RNA chains ⓘ

There are no non-standard protein/DNA/RNA residues in this entry.

5.5 Carbohydrates ⓘ

There are no carbohydrates in this entry.

5.6 Ligand geometry

Of 6 ligands modelled in this entry, 3 are monoatomic - leaving 3 for Mogul analysis.

In the following table, the Counts columns list the number of bonds (or angles) for which Mogul statistics could be retrieved, the number of bonds (or angles) that are observed in the model and the number of bonds (or angles) that are defined in the chemical component dictionary. The Link column lists molecule types, if any, to which the group is linked. The Z score for a bond length (or angle) is the number of standard deviations the observed value is removed from the expected value. A bond length (or angle) with $|Z| > 2$ is considered an outlier worth inspection. RMSZ is the root-mean-square of all Z scores of the bond lengths (or angles).

Mol	Type	Chain	Res	Link	Bond lengths			Bond angles		
					Counts	RMSZ	# $ Z > 2$	Counts	RMSZ	# $ Z > 2$
4	26A	A	1001	-	17,23,23	1.09	1 (5%)	19,34,34	2.32	4 (21%)
4	26A	A	1002[A]	-	17,23,23	0.95	0	19,34,34	1.97	3 (15%)
5	ACP	A	1005[B]	-	27,33,33	1.52	6 (22%)	30,52,52	1.95	2 (6%)

In the following table, the Chirals column lists the number of chiral outliers, the number of chiral centers analysed, the number of these observed in the model and the number defined in the chemical component dictionary. Similar counts are reported in the Torsion and Rings columns. '-' means no outliers of that kind were identified.

Mol	Type	Chain	Res	Link	Chirals	Torsions	Rings
4	26A	A	1001	-	-	0/6/26/26	0/3/3/3
4	26A	A	1002[A]	-	-	0/6/26/26	0/3/3/3
5	ACP	A	1005[B]	-	-	0/15/38/38	0/3/3/3

All (7) bond length outliers are listed below:

Mol	Chain	Res	Type	Atoms	Z	Observed(Å)	Ideal(Å)
5	A	1005[B]	ACP	PB-O2B	-3.23	1.48	1.56
4	A	1001	26A	C2-N3	2.10	1.35	1.32
5	A	1005[B]	ACP	O4'-C1'	2.19	1.44	1.41
5	A	1005[B]	ACP	PG-O3G	2.59	1.61	1.54
5	A	1005[B]	ACP	PG-O2G	2.83	1.61	1.54
5	A	1005[B]	ACP	C2-N1	3.22	1.40	1.33
5	A	1005[B]	ACP	PB-O3A	3.72	1.62	1.58

All (9) bond angle outliers are listed below:

Mol	Chain	Res	Type	Atoms	Z	Observed(°)	Ideal(°)
5	A	1005[B]	ACP	N3-C2-N1	-9.01	121.01	128.86
4	A	1002[A]	26A	N3-C2-N1	-6.16	123.49	128.86

Continued on next page...

Continued from previous page...

Mol	Chain	Res	Type	Atoms	Z	Observed(°)	Ideal(°)
4	A	1001	26A	N3-C2-N1	-6.16	123.50	128.86
4	A	1001	26A	C4'-O4'-C1'	-4.65	104.82	109.77
5	A	1005[B]	ACP	PA-O3A-PB	-3.50	121.11	132.39
4	A	1002[A]	26A	O2'-C2'-C3'	2.38	119.46	111.83
4	A	1001	26A	O2'-C2'-C3'	3.04	121.55	111.83
4	A	1002[A]	26A	C2-N1-C6	3.79	121.13	111.82
4	A	1001	26A	C2-N1-C6	4.12	121.93	111.82

There are no chirality outliers.

There are no torsion outliers.

There are no ring outliers.

3 monomers are involved in 6 short contacts:

Mol	Chain	Res	Type	Clashes	Symm-Clashes
4	A	1001	26A	4	0
4	A	1002[A]	26A	1	0
5	A	1005[B]	ACP	1	0

5.7 Other polymers [i](#)

There are no such residues in this entry.

5.8 Polymer linkage issues [i](#)

There are no chain breaks in this entry.

6 Fit of model and data [i](#)

6.1 Protein, DNA and RNA chains [i](#)

In the following table, the column labelled ‘#RSRZ> 2’ contains the number (and percentage) of RSRZ outliers, followed by percent RSRZ outliers for the chain as percentile scores relative to all X-ray entries and entries of similar resolution. The OWAB column contains the minimum, median, 95th percentile and maximum values of the occupancy-weighted average B-factor per residue. The column labelled ‘Q< 0.9’ lists the number of (and percentage) of residues with an average occupancy less than 0.9.

Mol	Chain	Analysed	<RSRZ>	#RSRZ>2		OWAB(Å ²)	Q<0.9
1	A	351/383 (91%)	-0.09	15 (4%)	36 42	9, 17, 37, 55	0

All (15) RSRZ outliers are listed below:

Mol	Chain	Res	Type	RSRZ
1	A	38[A]	PHE	4.9
1	A	244	LEU	3.6
1	A	247	ALA	3.1
1	A	243	ALA	3.0
1	A	242	THR	2.9
1	A	10	THR	2.4
1	A	50[A]	GLU	2.2
1	A	304[A]	VAL	2.2
1	A	53	ARG	2.2
1	A	266	GLY	2.1
1	A	239	ALA	2.1
1	A	307	ALA	2.1
1	A	246	THR	2.1
1	A	52	MET	2.1
1	A	248	ASN	2.0

6.2 Non-standard residues in protein, DNA, RNA chains [i](#)

There are no non-standard protein/DNA/RNA residues in this entry.

6.3 Carbohydrates [i](#)

There are no carbohydrates in this entry.

6.4 Ligands [i](#)

In the following table, the Atoms column lists the number of modelled atoms in the group and the number defined in the chemical component dictionary. LLDF column lists the quality of electron density of the group with respect to its neighbouring residues in protein, DNA or RNA chains. The B-factors column lists the minimum, median, 95th percentile and maximum values of B factors of atoms in the group. The column labelled 'Q < 0.9' lists the number of atoms with occupancy less than 0.9.

Mol	Type	Chain	Res	Atoms	RSCC	RSR	LLDF	B-factors(Å ²)	Q<0.9
3	NA	A	2002	1/1	1.00	0.06	0.78	19,19,19,19	0
5	ACP	A	1005[B]	31/31	0.94	0.09	0.74	13,18,78,86	31
4	26A	A	1002[A]	21/21	0.96	0.07	0.16	14,17,19,21	21
4	26A	A	1001	21/21	0.97	0.07	-0.35	11,13,18,25	0
2	CL	A	2001	1/1	1.00	0.08	-0.35	10,10,10,10	0
3	NA	A	2003	1/1	0.99	0.04	-1.83	21,21,21,21	0

6.5 Other polymers [i](#)

There are no such residues in this entry.