



# Full wwPDB NMR Structure Validation Report ⓘ

Jul 6, 2017 – 07:43 AM EDT

PDB ID : 1AC0  
Title : GLUCOAMYLASE, GRANULAR STARCH-BINDING DOMAIN COMPLEX WITH CYCLODEXTRIN, NMR, MINIMIZED AVERAGE STRUCTURE  
Authors : Sorimachi, K.; Le Gal-Coeffet, M.-F.; Williamson, G.; Archer, D.B.; Williamson, M.P.  
Deposited on : unknown

This is a Full wwPDB NMR Structure Validation Report for a publicly released PDB entry.

We welcome your comments at [validation@mail.wwpdb.org](mailto:validation@mail.wwpdb.org)

A user guide is available at

<http://wwpdb.org/validation/2016/NMRValidationReportHelp>

with specific help available everywhere you see the ⓘ symbol.

---

The following versions of software and data (see [references ⓘ](#)) were used in the production of this report:

Cyrange	:	Kirchner and Güntert (2011)
NmrClust	:	Kelley et al. (1996)
MolProbity	:	4.02b-467
Mogul	:	1.7.2 (RC1), CSD as538be (2017)
Percentile statistics	:	20161228.v01 (using entries in the PDB archive December 28th 2016)
RCI	:	v_1n_11_5_13_A (Berjanski et al., 2005)
PANAV	:	Wang et al. (2010)
ShiftChecker	:	rb-20029824
Ideal geometry (proteins)	:	Engh & Huber (2001)
Ideal geometry (DNA, RNA)	:	Parkinson et al. (1996)
Validation Pipeline (wwPDB-VP)	:	rb-20029824

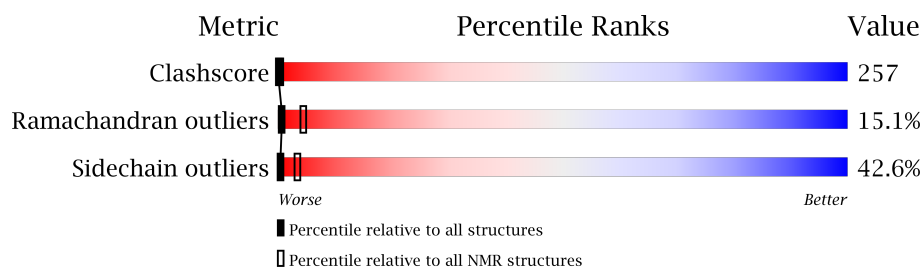
# 1 Overall quality at a glance

The following experimental techniques were used to determine the structure:

*SOLUTION NMR*

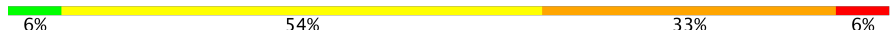
The overall completeness of chemical shifts assignment was not calculated.

Percentile scores (ranging between 0-100) for global validation metrics of the entry are shown in the following graphic. The table shows the number of entries on which the scores are based.



Metric	Whole archive (#Entries)	NMR archive (#Entries)
Clashscore	125131	11601
Ramachandran outliers	121729	10391
Sidechain outliers	121581	10367

The table below summarises the geometric issues observed across the polymeric chains and their fit to the experimental data. The red, orange, yellow and green segments indicate the fraction of residues that contain outliers for  $\geq 3$ , 2, 1 and 0 types of geometric quality criteria. A cyan segment indicates the fraction of residues that are not part of the well-defined cores, and a grey segment represents the fraction of residues that are not modelled. The numeric value for each fraction is indicated below the corresponding segment, with a dot representing fractions  $\leq 5\%$

Mol	Chain	Length	Quality of chain
1	A	108	

The following table lists non-polymeric compounds, carbohydrate monomers and non-standard residues in protein, DNA and RNA chains that are outliers for geometric criteria:

Mol	Chain	Compound	Res	Total models with violations	
				Chirality	Geometry
2	A	GLC	622(B)	1	-
2	A	GLC	623(B)	1	-

## 2 Ensemble composition and analysis ⓘ

This entry contains 1 models. Identification of well-defined residues and clustering analysis are not possible.

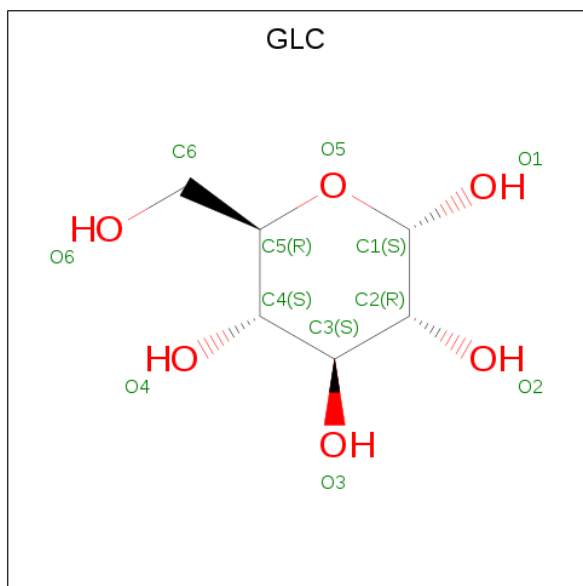
### 3 Entry composition [i](#)

There are 4 unique types of molecules in this entry. The entry contains 1907 atoms, of which 915 are hydrogens and 0 are deuteriums.

- Molecule 1 is a protein called GLUCOAMYLASE.

Mol	Chain	Residues	Atoms						Trace
1	A	108	Total	C	H	N	O	S	0
			1613	527	775	127	182	2	

- Molecule 2 is ALPHA-D-GLUCOSE (three-letter code: GLC) (formula:  $C_6H_{12}O_6$ ).



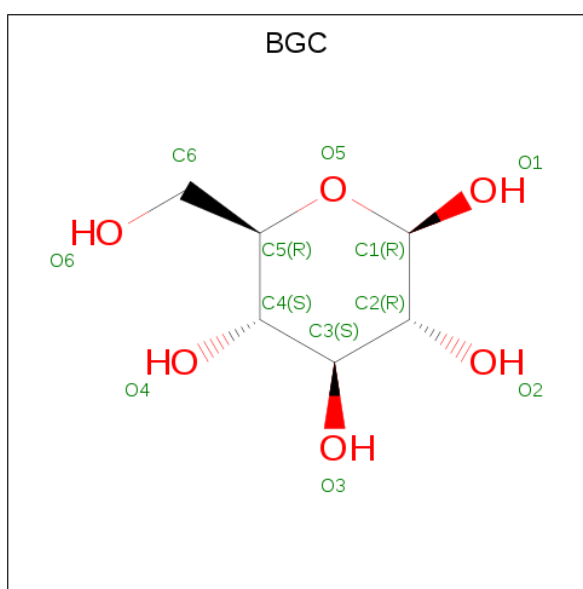
Mol	Chain	Residues	Atoms			
2	A	1	Total	C	H	O
			21	6	10	5
2	A	1	Total	C	H	O
			21	6	10	5
2	A	1	Total	C	H	O
			21	6	10	5
2	A	1	Total	C	H	O
			21	6	10	5
2	A	1	Total	C	H	O
			21	6	10	5
2	A	1	Total	C	H	O
			21	6	10	5

*Continued on next page...*

*Continued from previous page...*

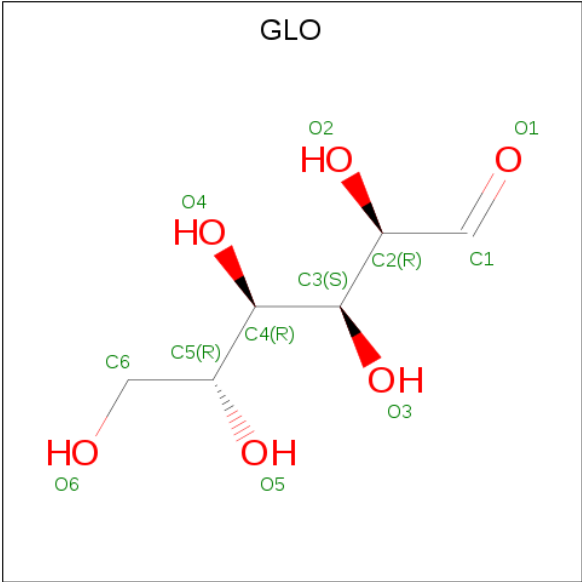
Mol	Chain	Residues	Atoms			
2	A	1	Total	C	H	O
			21	6	10	5
2	A	1	Total	C	H	O
			21	6	10	5
2	A	1	Total	C	H	O
			21	6	10	5
2	A	1	Total	C	H	O
			21	6	10	5

- Molecule 3 is BETA-D-GLUCOSE (three-letter code: BGC) (formula:  $C_6H_{12}O_6$ ).



Mol	Chain	Residues	Atoms			
3	A	1	Total	C	H	O
			21	6	10	5
3	A	1	Total	C	H	O
			21	6	10	5

- Molecule 4 is D-GLUCOSE IN LINEAR FORM (three-letter code: GLO) (formula:  $C_6H_{12}O_6$ ).



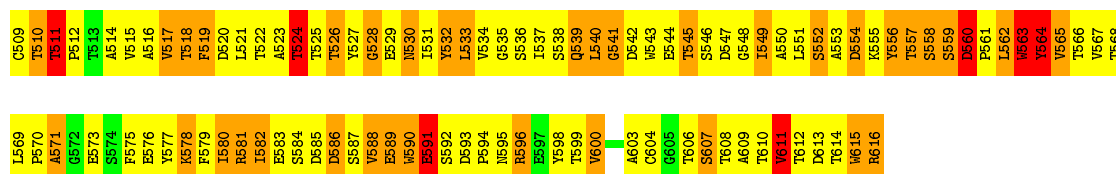
Mol	Chain	Residues	Atoms			
			Total	C	H	O
4	A	1	21	6	10	5

## 4 Residue-property plots

These plots are provided for all protein, RNA and DNA chains in the entry. The first graphic is the same as shown in the summary in section 1 of this report. The second graphic shows the sequence where residues are colour-coded according to the number of geometric quality criteria for which they contain at least one outlier: green = 0, yellow = 1, orange = 2 and red = 3 or more. Stretches of 2 or more consecutive residues without any outliers are shown as green connectors. Residues which are classified as ill-defined in the NMR ensemble, are shown in cyan with an underline colour-coded according to the previous scheme. Residues which were present in the experimental sample, but not modelled in the final structure are shown in grey.

### • Molecule 1: GLUCOAMYLASE

Chain A: 



## 5 Refinement protocol and experimental data overview

The models were refined using the following method: *simulated annealing*.

Of the 100 calculated structures, 1 were deposited, based on the following criterion: *RANDOM FROM 81 GOOD STRUCTURES*.

The following table shows the software used for structure solution, optimisation and refinement.

Software name	Classification	Version
X-PLOR	refinement	3.1
X-PLOR	structure solution	

No chemical shift data was provided. No validations of the models with respect to experimental NMR restraints is performed at this time.



## 6 Model quality

### 6.1 Standard geometry

Bond lengths and bond angles in the following residue types are not validated in this section: BGC, GLC, GLO

The Z score for a bond length (or angle) is the number of standard deviations the observed value is removed from the expected value. A bond length (or angle) with  $|Z| > 5$  is considered an outlier worth inspection. RMSZ is the (average) root-mean-square of all Z scores of the bond lengths (or angles).

Mol	Chain	Bond lengths		Bond angles	
		RMSZ	#Z>5	RMSZ	#Z>5
1	A	1.07	0/859 (0.0%)	1.11	2/1181 (0.2%)
All	All	1.07	0/859 (0.0%)	1.11	2/1181 (0.2%)

Chiral center outliers are detected by calculating the chiral volume of a chiral center and verifying if the center is modelled as a planar moiety or with the opposite hand. A planarity outlier is detected by checking planarity of atoms in a peptide group, atoms in a mainchain group or atoms of a sidechain that are expected to be planar.

Mol	Chain	Chirality	Planarity
1	A	0	3
All	All	0	3

There are no bond-length outliers.

All angle outliers are listed below. They are sorted according to the Z-score.

Mol	Chain	Res	Type	Atoms	Z	Observed(°)	Ideal(°)
1	A	564	TYR	CB-CG-CD1	-6.14	117.31	121.00
1	A	556	TYR	CB-CG-CD1	-6.04	117.38	121.00

There are no chirality outliers.

All planar outliers are listed below.

Mol	Chain	Res	Type	Group
1	A	596	ARG	Sidechain
1	A	616	ARG	Sidechain
1	A	581	ARG	Sidechain

## 6.2 Too-close contacts ⓘ

In the following table, the Non-H and H(model) columns list the number of non-hydrogen atoms and hydrogen atoms in each chain respectively. The H(added) column lists the number of hydrogen atoms added and optimized by MolProbity. The Clashes column lists the number of clashes averaged over the ensemble.

Mol	Chain	Non-H	H(model)	H(added)	Clashes
1	A	838	775	772	446
2	A	121	110	99	57
3	A	22	20	18	23
4	A	11	10	9	13
All	All	992	915	898	485

The all-atom clashscore is defined as the number of clashes found per 1000 atoms (including hydrogen atoms). The all-atom clashscore for this structure is 257.

All clashes are listed below, sorted by their clash magnitude.

Atom-1	Atom-2	Clash(Å)	Distance(Å)
1:A:535:GLY:C	1:A:542:ASP:HB2	1.30	1.43
1:A:534:VAL:HG22	1:A:542:ASP:CA	1.21	1.64
1:A:553:ALA:HB1	1:A:556:TYR:CB	1.15	1.71
1:A:535:GLY:O	1:A:542:ASP:HB2	1.15	1.40
1:A:515:VAL:CG2	1:A:600:VAL:HG11	1.12	1.73
1:A:521:LEU:HD11	1:A:615:TRP:CZ3	1.11	1.79
1:A:535:GLY:HA3	1:A:540:LEU:HD23	1.08	1.21
1:A:535:GLY:C	1:A:542:ASP:CB	1.03	2.25
1:A:542:ASP:O	1:A:543:TRP:CE3	1.01	2.14
1:A:562:LEU:C	1:A:562:LEU:HD13	1.00	1.71
1:A:561:PRO:HG2	2:A:617(B):GLC:O2	1.00	1.57
1:A:556:TYR:CE2	1:A:562:LEU:HD12	0.99	1.91
1:A:537:ILE:HG21	1:A:569:LEU:HD11	0.98	1.34
1:A:556:TYR:CD2	1:A:562:LEU:HD12	0.96	1.95
1:A:553:ALA:HB1	1:A:556:TYR:HB3	0.96	1.32
1:A:579:PHE:CD1	1:A:615:TRP:CH2	0.96	2.53
1:A:531:ILE:HG12	1:A:579:PHE:CZ	0.95	1.97
1:A:543:TRP:CG	4:A:6:GLO:O2	0.93	2.21
1:A:556:TYR:CD2	2:A:617(B):GLC:H2	0.93	1.99
1:A:536:SER:N	1:A:542:ASP:HB2	0.92	1.79
1:A:556:TYR:CG	2:A:617(B):GLC:H2	0.91	2.00
1:A:521:LEU:HD11	1:A:615:TRP:CE3	0.91	2.00
1:A:531:ILE:HB	1:A:563:TRP:CE3	0.90	2.00
1:A:537:ILE:CG2	1:A:569:LEU:HD11	0.90	1.96
1:A:564:TYR:CD1	1:A:564:TYR:C	0.90	2.42

*Continued on next page...*

*Continued from previous page...*

Atom-1	Atom-2	Clash(Å)	Distance(Å)
1:A:571:ALA:HB3	1:A:575:PHE:CZ	0.90	2.02
1:A:556:TYR:CE2	1:A:562:LEU:CG	0.90	2.55
1:A:515:VAL:HG21	1:A:600:VAL:HG11	0.90	1.38
1:A:545:THR:HG22	1:A:580:ILE:HD12	0.90	1.44
1:A:535:GLY:O	1:A:542:ASP:CB	0.88	2.21
1:A:556:TYR:CE2	1:A:562:LEU:CD1	0.88	2.56
1:A:553:ALA:CB	1:A:556:TYR:HB2	0.87	2.00
1:A:530:ASN:ND2	1:A:550:ALA:HB1	0.87	1.84
1:A:553:ALA:HB1	1:A:556:TYR:HB2	0.86	1.43
1:A:598:TYR:OH	1:A:609:ALA:HB3	0.86	1.70
1:A:553:ALA:CB	1:A:556:TYR:CB	0.85	2.54
1:A:556:TYR:CZ	1:A:562:LEU:HG	0.85	2.07
1:A:534:VAL:HG22	1:A:542:ASP:C	0.84	1.93
1:A:532:TYR:CB	1:A:580:ILE:HG12	0.84	2.02
1:A:580:ILE:O	1:A:580:ILE:HG12	0.84	1.70
1:A:535:GLY:CA	1:A:540:LEU:HD23	0.84	2.02
1:A:534:VAL:HG22	1:A:542:ASP:HA	0.83	1.48
1:A:525:THR:HB	1:A:563:TRP:CH2	0.82	2.10
1:A:540:LEU:HD21	1:A:549:ILE:HD11	0.82	1.52
1:A:534:VAL:HG22	1:A:542:ASP:N	0.82	1.89
1:A:532:TYR:HB3	1:A:580:ILE:CG1	0.82	2.05
1:A:534:VAL:HB	1:A:580:ILE:CD1	0.81	2.05
1:A:562:LEU:C	1:A:562:LEU:CD1	0.81	2.47
1:A:553:ALA:CA	1:A:556:TYR:HB2	0.81	2.04
1:A:515:VAL:HG22	1:A:600:VAL:HG11	0.81	1.50
1:A:542:ASP:HB3	1:A:543:TRP:CE2	0.81	2.10
1:A:519:PHE:HB2	1:A:565:VAL:CG1	0.81	2.06
1:A:562:LEU:HD13	1:A:563:TRP:N	0.80	1.91
1:A:534:VAL:C	1:A:542:ASP:HA	0.80	1.97
1:A:532:TYR:HB3	1:A:580:ILE:HG12	0.80	1.51
1:A:569:LEU:HD21	1:A:575:PHE:CD2	0.79	2.12
1:A:537:ILE:HG21	1:A:569:LEU:CD1	0.79	2.07
1:A:536:SER:CB	1:A:576:GLU:HB2	0.79	2.08
1:A:580:ILE:HG21	1:A:590:TRP:CD2	0.79	2.12
1:A:563:TRP:N	1:A:563:TRP:CD1	0.79	2.51
1:A:556:TYR:CD1	2:A:617(B):GLC:H61	0.78	2.13
1:A:556:TYR:CE2	2:A:617(B):GLC:C2	0.78	2.66
1:A:560:ASP:O	1:A:563:TRP:CE2	0.78	2.37
1:A:598:TYR:CD1	1:A:600:VAL:HG22	0.78	2.13
1:A:556:TYR:CD2	2:A:617(B):GLC:C2	0.78	2.67
1:A:537:ILE:HG23	1:A:540:LEU:HB2	0.78	1.55
1:A:519:PHE:CD2	1:A:611:VAL:HB	0.77	2.14

*Continued on next page...*

*Continued from previous page...*

Atom-1	Atom-2	Clash(Å)	Distance(Å)
1:A:530:ASN:CG	1:A:550:ALA:HB1	0.77	2.00
1:A:579:PHE:CD1	1:A:580:ILE:N	0.77	2.53
3:A:5:BGC:H6C1	4:A:6:GLO:C6	0.77	2.09
1:A:562:LEU:HD22	1:A:562:LEU:O	0.77	1.79
1:A:556:TYR:CE2	2:A:617(B):GLC:H2	0.77	2.14
1:A:554:ASP:OD1	1:A:564:TYR:CE2	0.76	2.38
1:A:524:THR:HA	1:A:561:PRO:HA	0.76	1.57
1:A:580:ILE:HG13	1:A:588:VAL:HG11	0.75	1.57
1:A:537:ILE:O	1:A:540:LEU:C	0.75	2.24
1:A:530:ASN:H	1:A:582:ILE:HG22	0.75	1.41
2:A:4:GLC:H5	3:A:5:BGC:H6C2	0.75	1.57
1:A:524:THR:N	1:A:563:TRP:HE1	0.75	1.80
1:A:537:ILE:CG2	1:A:540:LEU:HB2	0.75	2.12
2:A:617(B):GLC:H62	2:A:617(B):GLC:O3	0.75	1.80
1:A:556:TYR:HE2	1:A:562:LEU:CB	0.74	1.95
1:A:533:LEU:HB3	1:A:549:ILE:HD12	0.74	1.58
1:A:590:TRP:CE3	2:A:1:GLC:O3	0.74	2.38
1:A:556:TYR:CE2	1:A:562:LEU:CB	0.73	2.72
1:A:531:ILE:N	1:A:563:TRP:CE3	0.73	2.56
1:A:543:TRP:CD2	4:A:6:GLO:O2	0.73	2.39
1:A:560:ASP:O	1:A:563:TRP:CD2	0.73	2.42
1:A:556:TYR:CD1	2:A:617(B):GLC:C6	0.73	2.72
1:A:549:ILE:CG2	1:A:567:VAL:HG21	0.72	2.14
1:A:531:ILE:N	1:A:563:TRP:CZ3	0.72	2.58
1:A:532:TYR:CE2	1:A:545:THR:O	0.72	2.41
1:A:523:ALA:C	1:A:524:THR:HG22	0.72	2.05
1:A:532:TYR:HB3	1:A:580:ILE:CD1	0.72	2.15
1:A:517:VAL:CG1	1:A:611:VAL:CG2	0.72	2.67
1:A:542:ASP:CG	1:A:543:TRP:CZ2	0.71	2.63
1:A:521:LEU:HA	1:A:613:ASP:O	0.71	1.85
1:A:534:VAL:CG2	1:A:542:ASP:CA	0.71	2.59
2:A:617(B):GLC:H5	2:A:618(B):GLC:H2	0.71	1.63
1:A:569:LEU:HD21	1:A:575:PHE:CG	0.71	2.19
1:A:531:ILE:CB	1:A:563:TRP:CE3	0.70	2.74
1:A:556:TYR:CD1	2:A:617(B):GLC:H2	0.70	2.20
1:A:531:ILE:CG1	1:A:579:PHE:CZ	0.70	2.75
1:A:532:TYR:CB	1:A:580:ILE:CG1	0.69	2.69
1:A:571:ALA:CB	1:A:575:PHE:CZ	0.69	2.75
1:A:536:SER:HB2	1:A:576:GLU:HB2	0.68	1.65
1:A:577:TYR:CE1	1:A:598:TYR:CB	0.68	2.76
1:A:525:THR:HG21	1:A:560:ASP:N	0.68	2.03
1:A:532:TYR:O	1:A:579:PHE:CZ	0.68	2.47

*Continued on next page...*

*Continued from previous page...*

Atom-1	Atom-2	Clash(Å)	Distance(Å)
1:A:580:ILE:CG2	1:A:590:TRP:CD2	0.68	2.76
1:A:536:SER:N	1:A:542:ASP:CB	0.68	2.55
1:A:556:TYR:CE2	1:A:562:LEU:HB3	0.68	2.23
1:A:536:SER:CA	1:A:542:ASP:HB2	0.68	2.19
1:A:536:SER:CB	1:A:576:GLU:CB	0.68	2.71
1:A:593:ASP:CB	1:A:594:PRO:HD3	0.68	2.19
1:A:551:LEU:HD12	1:A:551:LEU:N	0.68	2.05
1:A:515:VAL:HG21	1:A:600:VAL:CG1	0.67	2.19
1:A:532:TYR:O	1:A:579:PHE:CE1	0.67	2.47
1:A:540:LEU:HD11	1:A:549:ILE:HG12	0.67	1.66
1:A:552:SER:HA	1:A:560:ASP:CB	0.67	2.20
2:A:4:GLC:H5	3:A:5:BGC:O5	0.66	1.88
1:A:545:THR:HG22	1:A:580:ILE:CD1	0.66	2.20
1:A:552:SER:OG	1:A:560:ASP:HB3	0.66	1.90
1:A:525:THR:HG21	1:A:560:ASP:CG	0.66	2.11
1:A:556:TYR:HE2	1:A:562:LEU:HB3	0.66	1.47
1:A:542:ASP:O	1:A:590:TRP:CZ3	0.66	2.49
1:A:519:PHE:CD2	1:A:611:VAL:CB	0.66	2.79
1:A:530:ASN:N	1:A:582:ILE:HG22	0.66	2.06
1:A:569:LEU:CD2	1:A:575:PHE:CD2	0.66	2.79
1:A:519:PHE:HB2	1:A:565:VAL:HG11	0.65	1.67
1:A:533:LEU:CD2	1:A:549:ILE:HD12	0.65	2.21
2:A:4:GLC:C5	3:A:5:BGC:H6C2	0.65	2.21
1:A:579:PHE:CD1	1:A:615:TRP:CZ2	0.65	2.83
1:A:545:THR:CG2	1:A:590:TRP:CZ2	0.65	2.79
1:A:534:VAL:CG2	1:A:542:ASP:C	0.65	2.65
1:A:537:ILE:CG2	1:A:575:PHE:HB3	0.65	2.22
1:A:571:ALA:CB	1:A:575:PHE:CE1	0.65	2.79
1:A:553:ALA:HB2	1:A:560:ASP:HA	0.65	1.69
1:A:536:SER:HB3	1:A:576:GLU:H	0.64	1.52
1:A:537:ILE:HG23	1:A:540:LEU:CB	0.64	2.20
1:A:554:ASP:CG	1:A:564:TYR:CZ	0.64	2.71
1:A:549:ILE:CG2	1:A:567:VAL:CG2	0.64	2.75
1:A:533:LEU:O	1:A:549:ILE:HG13	0.64	1.92
1:A:560:ASP:OD2	1:A:563:TRP:CZ3	0.64	2.50
1:A:598:TYR:OH	1:A:609:ALA:CB	0.64	2.44
1:A:536:SER:CB	1:A:576:GLU:CG	0.64	2.75
1:A:521:LEU:C	1:A:521:LEU:HD23	0.64	2.13
1:A:535:GLY:O	1:A:542:ASP:N	0.64	2.31
1:A:536:SER:HB3	1:A:576:GLU:CG	0.64	2.23
1:A:553:ALA:HB2	1:A:561:PRO:HD2	0.64	1.69
1:A:537:ILE:CG2	1:A:540:LEU:CB	0.63	2.76

*Continued on next page...*

*Continued from previous page...*

Atom-1	Atom-2	Clash(Å)	Distance(Å)
2:A:623(B):GLC:H2	2:A:623(B):GLC:H61	0.63	1.69
1:A:556:TYR:CE2	1:A:562:LEU:HG	0.63	2.22
1:A:521:LEU:CD1	1:A:615:TRP:CZ3	0.63	2.72
1:A:593:ASP:CB	1:A:594:PRO:CD	0.63	2.76
1:A:523:ALA:HB3	1:A:563:TRP:NE1	0.63	2.09
1:A:556:TYR:CE2	2:A:617(B):GLC:O2	0.62	2.52
1:A:530:ASN:O	1:A:582:ILE:CB	0.62	2.47
1:A:542:ASP:OD1	1:A:543:TRP:CH2	0.62	2.53
1:A:534:VAL:HG11	1:A:590:TRP:CZ3	0.62	2.28
3:A:2:BGC:C6	3:A:2:BGC:H2	0.62	2.25
1:A:542:ASP:OD1	1:A:543:TRP:CZ3	0.62	2.53
1:A:553:ALA:N	1:A:560:ASP:HA	0.61	2.09
1:A:532:TYR:O	1:A:579:PHE:CD1	0.61	2.52
1:A:536:SER:N	1:A:542:ASP:OD2	0.61	2.33
1:A:542:ASP:CB	1:A:543:TRP:CE2	0.61	2.84
2:A:4:GLC:H5	3:A:5:BGC:C6	0.61	2.26
1:A:533:LEU:HD22	1:A:549:ILE:HD12	0.61	1.70
1:A:554:ASP:CG	1:A:555:LYS:N	0.61	2.54
1:A:531:ILE:HB	1:A:563:TRP:CD2	0.61	2.30
1:A:577:TYR:CE1	1:A:598:TYR:HB2	0.61	2.30
1:A:537:ILE:O	1:A:541:GLY:N	0.61	2.33
1:A:552:SER:HA	1:A:560:ASP:HB3	0.61	1.73
1:A:552:SER:CA	1:A:560:ASP:HB3	0.61	2.26
1:A:554:ASP:OD1	1:A:564:TYR:CZ	0.61	2.54
1:A:537:ILE:HB	1:A:575:PHE:CD1	0.60	2.30
1:A:575:PHE:CE2	1:A:600:VAL:HG23	0.60	2.31
1:A:517:VAL:HG12	1:A:611:VAL:CG2	0.60	2.26
1:A:551:LEU:CD2	1:A:565:VAL:CG1	0.60	2.80
1:A:543:TRP:CD1	3:A:5:BGC:O4	0.60	2.54
1:A:531:ILE:CG2	1:A:551:LEU:HB2	0.60	2.26
3:A:5:BGC:C6	4:A:6:GLO:H62	0.60	2.26
1:A:539:GLN:HB3	1:A:569:LEU:HD12	0.60	1.74
1:A:530:ASN:O	1:A:582:ILE:HG22	0.60	1.96
1:A:542:ASP:O	1:A:590:TRP:HZ3	0.60	1.79
2:A:617(B):GLC:O2	2:A:623(B):GLC:H3	0.60	1.96
3:A:2:BGC:C2	3:A:2:BGC:C6	0.59	2.80
1:A:525:THR:CG2	1:A:560:ASP:N	0.59	2.65
1:A:532:TYR:O	1:A:579:PHE:CE2	0.59	2.55
1:A:580:ILE:CG1	1:A:580:ILE:O	0.59	2.49
1:A:525:THR:HB	1:A:560:ASP:OD2	0.59	1.97
1:A:542:ASP:C	1:A:543:TRP:CD2	0.59	2.75
1:A:591:GLU:HB2	1:A:615:TRP:CZ2	0.59	2.32

*Continued on next page...*

*Continued from previous page...*

Atom-1	Atom-2	Clash(Å)	Distance(Å)
2:A:4:GLC:C5	3:A:5:BGC:O5	0.59	2.50
1:A:527:TYR:HD1	2:A:620(B):GLC:HO3	0.59	1.37
1:A:590:TRP:CD2	2:A:1:GLC:O3	0.59	2.54
2:A:4:GLC:O4	3:A:5:BGC:O6	0.59	2.18
1:A:545:THR:HG22	1:A:590:TRP:CZ2	0.59	2.33
1:A:536:SER:HB3	1:A:576:GLU:CB	0.59	2.28
1:A:527:TYR:C	1:A:559:SER:OG	0.58	2.41
2:A:621(B):GLC:O3	2:A:622(B):GLC:C1	0.58	2.51
1:A:556:TYR:CZ	2:A:617(B):GLC:H2	0.58	2.32
1:A:580:ILE:HA	1:A:590:TRP:HA	0.58	1.75
1:A:615:TRP:CE3	1:A:615:TRP:HA	0.58	2.32
3:A:5:BGC:C6	4:A:6:GLO:C6	0.58	2.82
1:A:519:PHE:CD1	1:A:519:PHE:N	0.58	2.70
1:A:556:TYR:HB3	2:A:617(B):GLC:O3	0.58	1.97
1:A:525:THR:HG22	1:A:560:ASP:C	0.58	2.19
1:A:527:TYR:HA	1:A:559:SER:CB	0.57	2.29
1:A:540:LEU:HD11	1:A:549:ILE:CG1	0.57	2.28
1:A:564:TYR:CD1	1:A:564:TYR:N	0.57	2.72
1:A:537:ILE:CG2	1:A:569:LEU:CD1	0.57	2.74
1:A:527:TYR:HA	1:A:559:SER:HB2	0.57	1.76
1:A:536:SER:HA	1:A:542:ASP:CB	0.57	2.29
1:A:542:ASP:O	1:A:543:TRP:CD2	0.57	2.56
1:A:551:LEU:HG	1:A:565:VAL:CG1	0.57	2.30
1:A:561:PRO:O	1:A:563:TRP:CD1	0.57	2.57
1:A:580:ILE:HB	1:A:590:TRP:CD1	0.57	2.34
1:A:530:ASN:O	1:A:582:ILE:N	0.57	2.37
1:A:536:SER:HA	1:A:542:ASP:HB2	0.57	1.76
1:A:564:TYR:CG	1:A:565:VAL:N	0.57	2.72
2:A:619(B):GLC:H5	2:A:620(B):GLC:O2	0.57	2.00
1:A:549:ILE:HG22	1:A:567:VAL:HG21	0.56	1.77
1:A:551:LEU:CD2	1:A:565:VAL:HG11	0.56	2.29
1:A:553:ALA:CB	1:A:560:ASP:HA	0.56	2.29
1:A:577:TYR:CE1	1:A:598:TYR:HB3	0.56	2.35
1:A:564:TYR:HD1	1:A:564:TYR:N	0.56	1.97
2:A:623(B):GLC:C6	2:A:623(B):GLC:H2	0.56	2.30
1:A:610:THR:C	1:A:611:VAL:CG2	0.56	2.73
2:A:4:GLC:O4	3:A:5:BGC:C6	0.56	2.53
1:A:551:LEU:HB3	1:A:564:TYR:O	0.56	2.00
1:A:516:ALA:O	1:A:608:THR:HB	0.56	2.00
1:A:540:LEU:O	1:A:542:ASP:N	0.56	2.38
1:A:591:GLU:CB	1:A:615:TRP:CH2	0.56	2.89
1:A:579:PHE:CD1	1:A:579:PHE:C	0.55	2.80

*Continued on next page...*

*Continued from previous page...*

Atom-1	Atom-2	Clash(Å)	Distance(Å)
1:A:534:VAL:CG2	1:A:542:ASP:HA	0.55	2.25
1:A:532:TYR:O	1:A:579:PHE:CG	0.55	2.60
2:A:623(B):GLC:C6	2:A:623(B):GLC:C2	0.55	2.84
1:A:554:ASP:CG	1:A:564:TYR:CE2	0.55	2.79
1:A:554:ASP:HB3	1:A:564:TYR:CZ	0.55	2.36
1:A:579:PHE:CD1	1:A:615:TRP:HH2	0.55	2.11
1:A:556:TYR:CE1	2:A:617(B):GLC:H2	0.55	2.36
1:A:571:ALA:HB3	1:A:575:PHE:CE1	0.55	2.37
1:A:537:ILE:HB	1:A:575:PHE:HD1	0.55	1.60
1:A:517:VAL:CG1	1:A:611:VAL:HG22	0.55	2.31
1:A:542:ASP:HB3	1:A:543:TRP:NE1	0.55	2.16
1:A:560:ASP:O	1:A:563:TRP:CG	0.55	2.61
1:A:545:THR:CG2	1:A:580:ILE:CD1	0.55	2.85
1:A:532:TYR:CB	1:A:580:ILE:O	0.54	2.54
1:A:544:GLU:O	1:A:546:SER:N	0.54	2.40
1:A:551:LEU:HD23	1:A:565:VAL:HG12	0.54	1.78
1:A:559:SER:C	1:A:560:ASP:OD1	0.54	2.45
3:A:5:BGC:H6C1	4:A:6:GLO:O5	0.54	2.03
1:A:535:GLY:O	1:A:542:ASP:CA	0.54	2.56
1:A:581:ARG:HB2	1:A:615:TRP:NE1	0.54	2.18
1:A:537:ILE:HG13	1:A:538:SER:N	0.54	2.18
1:A:580:ILE:CG2	1:A:590:TRP:CG	0.54	2.91
1:A:540:LEU:O	1:A:541:GLY:C	0.54	2.43
1:A:525:THR:CG2	1:A:560:ASP:H	0.54	2.16
1:A:523:ALA:C	1:A:561:PRO:O	0.54	2.45
1:A:531:ILE:H	1:A:563:TRP:HE3	0.54	1.43
1:A:519:PHE:CE2	1:A:611:VAL:HG21	0.54	2.38
1:A:591:GLU:HB3	1:A:615:TRP:CH2	0.54	2.37
1:A:531:ILE:HG12	1:A:579:PHE:CE1	0.53	2.36
1:A:543:TRP:CB	4:A:6:GLO:O2	0.53	2.56
1:A:532:TYR:N	1:A:580:ILE:O	0.53	2.41
1:A:560:ASP:O	1:A:563:TRP:CD1	0.53	2.61
1:A:525:THR:N	1:A:563:TRP:CZ2	0.53	2.76
1:A:580:ILE:HG13	1:A:588:VAL:CG1	0.53	2.30
1:A:582:ILE:HA	1:A:588:VAL:HA	0.53	1.80
2:A:4:GLC:C4	3:A:5:BGC:H6C2	0.53	2.34
1:A:554:ASP:HB3	1:A:564:TYR:OH	0.53	2.04
1:A:528:GLY:N	1:A:559:SER:OG	0.53	2.41
1:A:518:THR:HG22	1:A:566:THR:OG1	0.53	2.04
1:A:517:VAL:HG11	1:A:598:TYR:CE2	0.53	2.39
1:A:530:ASN:O	1:A:582:ILE:CG2	0.53	2.57
1:A:536:SER:CA	1:A:542:ASP:CB	0.53	2.87

*Continued on next page...*



*Continued from previous page...*

Atom-1	Atom-2	Clash(Å)	Distance(Å)
1:A:543:TRP:CH2	1:A:578:LYS:HB2	0.53	2.39
3:A:5:BGC:C5	4:A:6:GLO:O5	0.53	2.56
1:A:556:TYR:CZ	2:A:617(B):GLC:C2	0.53	2.91
1:A:524:THR:HA	1:A:561:PRO:CA	0.53	2.31
1:A:527:TYR:HD1	2:A:620(B):GLC:O3	0.53	1.87
1:A:549:ILE:HG23	1:A:567:VAL:HG21	0.53	1.80
1:A:562:LEU:O	1:A:563:TRP:C	0.53	2.47
1:A:531:ILE:CG1	1:A:579:PHE:CE1	0.53	2.92
1:A:532:TYR:O	1:A:579:PHE:CD2	0.52	2.62
1:A:517:VAL:O	1:A:519:PHE:CE1	0.52	2.61
1:A:532:TYR:HB3	1:A:580:ILE:HD11	0.52	1.80
1:A:536:SER:HB2	1:A:576:GLU:CB	0.52	2.34
1:A:554:ASP:CB	1:A:564:TYR:OH	0.52	2.57
1:A:576:GLU:O	1:A:577:TYR:CD1	0.52	2.61
1:A:543:TRP:HA	1:A:590:TRP:CH2	0.52	2.39
1:A:533:LEU:HB3	1:A:549:ILE:HB	0.52	1.80
1:A:535:GLY:CA	1:A:576:GLU:O	0.52	2.57
1:A:531:ILE:CG2	1:A:563:TRP:CB	0.52	2.87
1:A:521:LEU:HD23	1:A:522:THR:N	0.52	2.19
1:A:589:GLU:CG	1:A:589:GLU:O	0.52	2.56
1:A:590:TRP:O	1:A:592:SER:N	0.52	2.42
1:A:537:ILE:HD13	1:A:575:PHE:CD1	0.51	2.41
1:A:511:THR:N	1:A:512:PRO:CD	0.51	2.74
4:A:6:GLO:H61	2:A:7:GLC:C1	0.51	2.35
1:A:525:THR:OG1	1:A:529:GLU:HG2	0.51	2.05
1:A:556:TYR:OH	1:A:562:LEU:HG	0.51	2.04
1:A:525:THR:HB	1:A:563:TRP:CZ2	0.51	2.39
1:A:567:VAL:HG12	1:A:568:THR:H	0.51	1.65
1:A:534:VAL:HB	1:A:580:ILE:HD13	0.51	1.81
1:A:534:VAL:HG13	1:A:542:ASP:O	0.51	2.04
3:A:5:BGC:H6C1	4:A:6:GLO:O6	0.51	2.06
1:A:610:THR:O	1:A:611:VAL:HG22	0.51	2.05
3:A:2:BGC:H6C2	3:A:2:BGC:H2	0.51	1.83
1:A:519:PHE:CB	1:A:565:VAL:CG1	0.51	2.86
1:A:511:THR:N	1:A:512:PRO:HD2	0.51	2.21
1:A:531:ILE:HG21	1:A:563:TRP:CB	0.51	2.36
1:A:541:GLY:C	1:A:543:TRP:H	0.51	2.08
1:A:561:PRO:HG2	2:A:617(B):GLC:H3	0.51	1.82
1:A:607:SER:C	1:A:608:THR:CG2	0.50	2.79
1:A:511:THR:CB	1:A:512:PRO:HD3	0.50	2.36
1:A:543:TRP:CZ3	1:A:578:LYS:HD2	0.50	2.40
1:A:542:ASP:CG	1:A:543:TRP:CH2	0.50	2.83

*Continued on next page...*

*Continued from previous page...*

Atom-1	Atom-2	Clash(Å)	Distance(Å)
1:A:554:ASP:CB	1:A:564:TYR:CZ	0.50	2.94
1:A:607:SER:O	1:A:608:THR:HG22	0.50	2.06
1:A:527:TYR:CE1	1:A:558:SER:HA	0.50	2.42
1:A:544:GLU:C	1:A:546:SER:N	0.50	2.65
1:A:615:TRP:CE3	1:A:615:TRP:CA	0.50	2.93
1:A:515:VAL:HG21	1:A:600:VAL:HG21	0.50	1.84
2:A:4:GLC:H5	3:A:5:BGC:C5	0.50	2.37
1:A:529:GLU:HB2	1:A:583:GLU:C	0.50	2.27
1:A:578:LYS:HE3	1:A:595:ASN:CB	0.50	2.37
1:A:579:PHE:CG	1:A:615:TRP:CH2	0.50	2.99
2:A:4:GLC:O6	2:A:4:GLC:O3	0.50	2.30
1:A:531:ILE:HG12	1:A:579:PHE:HZ	0.50	1.59
1:A:548:GLY:C	1:A:549:ILE:HG13	0.49	2.28
1:A:529:GLU:CG	1:A:563:TRP:HH2	0.49	2.20
1:A:589:GLU:O	1:A:591:GLU:N	0.49	2.45
3:A:5:BGC:H5	4:A:6:GLO:C5	0.49	2.37
1:A:530:ASN:O	1:A:582:ILE:CA	0.49	2.60
1:A:515:VAL:HG12	1:A:517:VAL:HG22	0.49	1.85
1:A:533:LEU:HB3	1:A:549:ILE:CD1	0.49	2.36
1:A:560:ASP:O	1:A:563:TRP:NE1	0.49	2.45
1:A:561:PRO:HG2	2:A:617(B):GLC:C3	0.49	2.38
1:A:545:THR:HB	1:A:580:ILE:HD11	0.49	1.85
1:A:564:TYR:CD1	1:A:564:TYR:O	0.49	2.65
1:A:580:ILE:HG21	1:A:590:TRP:CE2	0.48	2.43
1:A:525:THR:CB	1:A:560:ASP:OD2	0.48	2.61
1:A:542:ASP:HB3	1:A:543:TRP:CD2	0.48	2.41
1:A:519:PHE:CB	1:A:565:VAL:HG13	0.48	2.39
1:A:530:ASN:ND2	1:A:550:ALA:CB	0.48	2.70
1:A:553:ALA:HB2	1:A:561:PRO:CD	0.48	2.38
1:A:551:LEU:CB	1:A:564:TYR:O	0.48	2.61
1:A:556:TYR:HA	2:A:617(B):GLC:C6	0.48	2.39
1:A:532:TYR:HB2	1:A:580:ILE:O	0.48	2.07
1:A:590:TRP:N	1:A:590:TRP:CD1	0.48	2.80
1:A:519:PHE:O	1:A:565:VAL:CG1	0.48	2.61
1:A:556:TYR:CB	2:A:617(B):GLC:O3	0.48	2.61
1:A:561:PRO:CG	2:A:617(B):GLC:O2	0.48	2.46
1:A:551:LEU:HG	1:A:565:VAL:CB	0.47	2.38
1:A:551:LEU:HG	1:A:565:VAL:HG11	0.47	1.85
1:A:549:ILE:HG22	1:A:567:VAL:CG2	0.47	2.39
1:A:529:GLU:CG	1:A:563:TRP:CH2	0.47	2.97
1:A:553:ALA:HA	1:A:556:TYR:HB2	0.47	1.85
1:A:515:VAL:HA	1:A:607:SER:O	0.47	2.08

*Continued on next page...*

*Continued from previous page...*

Atom-1	Atom-2	Clash(Å)	Distance(Å)
1:A:542:ASP:OD2	1:A:576:GLU:HB2	0.47	2.10
1:A:565:VAL:CG2	1:A:566:THR:N	0.47	2.77
1:A:561:PRO:HG2	2:A:617(B):GLC:C2	0.47	2.37
1:A:591:GLU:CB	1:A:615:TRP:CZ2	0.47	2.98
1:A:551:LEU:HG	1:A:565:VAL:HB	0.47	1.86
1:A:530:ASN:C	1:A:563:TRP:HZ3	0.47	2.12
1:A:534:VAL:O	1:A:542:ASP:OD1	0.47	2.32
1:A:579:PHE:O	1:A:591:GLU:N	0.47	2.47
1:A:530:ASN:C	1:A:563:TRP:CZ3	0.47	2.88
1:A:551:LEU:CG	1:A:565:VAL:CG1	0.47	2.93
1:A:516:ALA:HA	1:A:567:VAL:O	0.47	2.09
1:A:545:THR:HG23	1:A:590:TRP:CZ2	0.46	2.44
1:A:556:TYR:CZ	2:A:617(B):GLC:C1	0.46	2.98
1:A:531:ILE:CG1	1:A:579:PHE:HZ	0.46	2.22
1:A:551:LEU:HD23	1:A:565:VAL:CG1	0.46	2.40
1:A:552:SER:HA	1:A:560:ASP:HB2	0.46	1.87
1:A:535:GLY:C	1:A:542:ASP:CG	0.46	2.73
1:A:534:VAL:CG1	1:A:542:ASP:O	0.46	2.63
1:A:510:THR:C	1:A:511:THR:OG1	0.46	2.54
1:A:521:LEU:O	1:A:562:LEU:O	0.46	2.33
1:A:536:SER:HB3	1:A:576:GLU:N	0.46	2.22
1:A:511:THR:OG1	1:A:512:PRO:HD3	0.46	2.10
1:A:528:GLY:O	1:A:584:SER:CB	0.46	2.64
1:A:537:ILE:HB	1:A:575:PHE:HB3	0.46	1.88
1:A:531:ILE:HG22	1:A:563:TRP:HB3	0.46	1.88
1:A:531:ILE:O	1:A:531:ILE:HG23	0.46	2.11
1:A:543:TRP:HB3	4:A:6:GLO:O2	0.46	2.10
1:A:534:VAL:CG2	1:A:542:ASP:N	0.45	2.72
1:A:554:ASP:CG	1:A:555:LYS:H	0.45	2.13
1:A:543:TRP:CH2	1:A:578:LYS:HD2	0.45	2.45
1:A:534:VAL:CB	1:A:580:ILE:CD1	0.45	2.89
1:A:580:ILE:CA	1:A:590:TRP:HA	0.45	2.40
1:A:553:ALA:HB2	1:A:560:ASP:CA	0.45	2.40
1:A:561:PRO:C	1:A:563:TRP:CD1	0.45	2.90
1:A:564:TYR:O	1:A:565:VAL:CB	0.45	2.64
1:A:531:ILE:O	1:A:531:ILE:CG2	0.45	2.64
1:A:537:ILE:CG1	1:A:538:SER:N	0.45	2.79
1:A:515:VAL:HG23	1:A:569:LEU:O	0.45	2.11
2:A:619(B):GLC:O6	2:A:622(B):GLC:H2	0.45	2.12
1:A:556:TYR:CD2	2:A:617(B):GLC:O2	0.45	2.70
2:A:619(B):GLC:O4	2:A:620(B):GLC:O4	0.45	2.35
1:A:534:VAL:O	1:A:534:VAL:HG13	0.45	2.11

*Continued on next page...*

*Continued from previous page...*

Atom-1	Atom-2	Clash(Å)	Distance(Å)
1:A:573:GLU:N	1:A:600:VAL:O	0.45	2.49
3:A:5:BGC:C6	4:A:6:GLO:O5	0.45	2.65
1:A:511:THR:CB	1:A:512:PRO:CD	0.45	2.94
1:A:521:LEU:C	1:A:521:LEU:CD2	0.45	2.84
1:A:542:ASP:CG	1:A:543:TRP:CE2	0.45	2.90
1:A:560:ASP:N	1:A:561:PRO:HD3	0.45	2.26
1:A:527:TYR:HA	1:A:559:SER:OG	0.44	2.11
1:A:537:ILE:CB	1:A:575:PHE:CD1	0.44	3.00
1:A:551:LEU:CG	1:A:565:VAL:HG11	0.44	2.42
1:A:534:VAL:O	1:A:534:VAL:CG1	0.44	2.65
1:A:545:THR:CG2	1:A:590:TRP:CE2	0.44	3.00
1:A:593:ASP:HB2	1:A:594:PRO:HD3	0.44	1.86
1:A:531:ILE:HG21	1:A:563:TRP:HB2	0.44	1.89
1:A:543:TRP:HA	1:A:590:TRP:CZ3	0.44	2.47
1:A:531:ILE:HG23	1:A:551:LEU:HD13	0.44	1.89
1:A:578:LYS:HE3	1:A:595:ASN:HB3	0.44	1.90
1:A:556:TYR:CD1	2:A:617(B):GLC:H62	0.44	2.44
1:A:575:PHE:HE2	1:A:600:VAL:HG23	0.44	1.71
1:A:536:SER:CB	1:A:576:GLU:HG3	0.44	2.42
2:A:617(B):GLC:C5	2:A:618(B):GLC:H2	0.44	2.29
2:A:3:GLC:H5	2:A:4:GLC:H62	0.44	1.89
1:A:533:LEU:HD22	1:A:549:ILE:CD1	0.44	2.42
1:A:525:THR:CA	1:A:563:TRP:CZ2	0.44	3.01
1:A:527:TYR:HD1	1:A:558:SER:HG	0.44	1.56
1:A:509:CYS:HA	1:A:604:CYS:CB	0.43	2.43
1:A:537:ILE:CB	1:A:575:PHE:HB3	0.43	2.42
1:A:544:GLU:HG3	3:A:2:BGC:O3	0.43	2.14
1:A:561:PRO:O	1:A:563:TRP:NE1	0.43	2.50
1:A:607:SER:O	1:A:608:THR:CG2	0.43	2.66
1:A:519:PHE:CD1	1:A:565:VAL:HG22	0.43	2.49
1:A:523:ALA:HB3	1:A:563:TRP:CD1	0.43	2.48
1:A:527:TYR:CD1	1:A:558:SER:OG	0.43	2.71
1:A:532:TYR:HB2	1:A:580:ILE:HG12	0.43	1.85
1:A:588:VAL:HG12	1:A:589:GLU:H	0.43	1.74
1:A:569:LEU:HD22	1:A:577:TYR:OH	0.43	2.13
1:A:580:ILE:CB	1:A:590:TRP:HA	0.43	2.43
1:A:539:GLN:NE2	1:A:539:GLN:O	0.43	2.52
1:A:542:ASP:OD2	1:A:543:TRP:CZ2	0.43	2.71
1:A:531:ILE:O	1:A:551:LEU:CD1	0.43	2.67
1:A:551:LEU:CD1	1:A:551:LEU:N	0.43	2.77
1:A:561:PRO:CG	2:A:617(B):GLC:H3	0.43	2.44
1:A:534:VAL:O	1:A:578:LYS:O	0.43	2.36

*Continued on next page...*

*Continued from previous page...*

Atom-1	Atom-2	Clash(Å)	Distance(Å)
1:A:591:GLU:HG2	1:A:594:PRO:CG	0.43	2.43
1:A:533:LEU:CB	1:A:549:ILE:HB	0.43	2.43
1:A:557:THR:O	1:A:557:THR:CG2	0.43	2.67
1:A:514:ALA:HA	1:A:570:PRO:HA	0.43	1.91
1:A:582:ILE:HG12	1:A:588:VAL:HG13	0.43	1.89
1:A:541:GLY:O	1:A:543:TRP:CD1	0.42	2.72
1:A:542:ASP:C	1:A:543:TRP:CG	0.42	2.91
1:A:564:TYR:O	1:A:565:VAL:HB	0.42	2.14
1:A:530:ASN:CA	1:A:563:TRP:HZ3	0.42	2.27
1:A:591:GLU:CG	1:A:594:PRO:HD2	0.42	2.44
2:A:1:GLC:O2	2:A:7:GLC:H61	0.42	2.14
1:A:544:GLU:C	1:A:546:SER:H	0.42	2.18
1:A:554:ASP:OD1	1:A:555:LYS:HG3	0.42	2.14
1:A:531:ILE:C	1:A:579:PHE:CZ	0.42	2.93
1:A:526:THR:OG1	1:A:526:THR:O	0.42	2.36
1:A:551:LEU:HD13	1:A:579:PHE:CE2	0.42	2.50
1:A:519:PHE:O	1:A:565:VAL:HG12	0.42	2.15
1:A:556:TYR:HA	2:A:617(B):GLC:H62	0.41	1.91
1:A:527:TYR:CA	1:A:559:SER:OG	0.41	2.68
1:A:586:ASP:C	1:A:586:ASP:OD1	0.41	2.56
2:A:4:GLC:C4	3:A:5:BGC:C6	0.41	2.98
1:A:539:GLN:HG3	1:A:570:PRO:HD2	0.41	1.93
1:A:524:THR:N	1:A:563:TRP:NE1	0.41	2.60
1:A:531:ILE:HG22	1:A:551:LEU:HB2	0.41	1.91
1:A:515:VAL:O	1:A:568:THR:HA	0.41	2.15
1:A:517:VAL:HG11	1:A:611:VAL:HG22	0.41	1.91
1:A:536:SER:CB	1:A:543:TRP:HE1	0.41	2.29
1:A:533:LEU:O	1:A:549:ILE:CG1	0.41	2.65
1:A:535:GLY:HA2	1:A:542:ASP:OD2	0.40	2.17
2:A:3:GLC:O2	2:A:3:GLC:H5	0.40	2.16
1:A:525:THR:OG1	1:A:526:THR:N	0.40	2.54
1:A:575:PHE:CD2	1:A:600:VAL:HG23	0.40	2.51
1:A:536:SER:N	1:A:576:GLU:HB2	0.40	2.31
1:A:543:TRP:CA	1:A:590:TRP:CH2	0.40	3.05
2:A:1:GLC:C2	2:A:7:GLC:H5	0.40	2.46
1:A:536:SER:HB2	1:A:576:GLU:CG	0.40	2.44
1:A:579:PHE:CE1	1:A:615:TRP:CZ2	0.40	3.09
1:A:581:ARG:CB	1:A:615:TRP:HE1	0.40	2.28
2:A:3:GLC:H5	2:A:4:GLC:O5	0.40	2.16
1:A:519:PHE:CZ	1:A:549:ILE:HD13	0.40	2.52

## 6.3 Torsion angles [i](#)

### 6.3.1 Protein backbone [i](#)

In the following table, the Percentiles column shows the percent Ramachandran outliers of the chain as a percentile score with respect to all PDB entries followed by that with respect to all NMR entries. The Analysed column shows the number of residues for which the backbone conformation was analysed and the total number of residues.

Mol	Chain	Analysed	Favoured	Allowed	Outliers	Percentiles	
1	A	106/108 (98%)	65 (61%)	25 (24%)	16 (15%)	1	4
All	All	106/108 (98%)	65 (61%)	25 (24%)	16 (15%)	1	4

All 16 Ramachandran outliers are listed below. They are sorted by the frequency of occurrence in the ensemble.

Mol	Chain	Res	Type
1	A	591	GLU
1	A	524	THR
1	A	541	GLY
1	A	560	ASP
1	A	590	TRP
1	A	511	THR
1	A	563	TRP
1	A	587	SER
1	A	586	ASP
1	A	558	SER
1	A	528	GLY
1	A	545	THR
1	A	603	ALA
1	A	611	VAL
1	A	571	ALA
1	A	565	VAL

### 6.3.2 Protein sidechains [i](#)

In the following table, the Percentiles column shows the percent sidechain outliers of the chain as a percentile score with respect to all PDB entries followed by that with respect to all NMR entries. The Analysed column shows the number of residues for which the sidechain conformation was analysed and the total number of residues.

Mol	Chain	Analysed	Rotameric	Outliers	Percentiles
1	A	94/94 (100%)	54 (57%)	40 (43%)	0 3

*Continued on next page...*

*Continued from previous page...*

Mol	Chain	Analysed	Rotameric	Outliers	Percentiles
All	All	94/94 (100%)	54 (57%)	40 (43%)	<b>0</b> <b>3</b>

All 40 residues with a non-rotameric sidechain are listed below. They are sorted by the frequency of occurrence in the ensemble.

Mol	Chain	Res	Type
1	A	518	THR
1	A	582	ILE
1	A	557	THR
1	A	519	PHE
1	A	563	TRP
1	A	585	ASP
1	A	616	ARG
1	A	580	ILE
1	A	596	ARG
1	A	600	VAL
1	A	560	ASP
1	A	511	THR
1	A	607	SER
1	A	540	LEU
1	A	532	TYR
1	A	554	ASP
1	A	564	TYR
1	A	599	THR
1	A	589	GLU
1	A	520	ASP
1	A	559	SER
1	A	539	GLN
1	A	524	THR
1	A	530	ASN
1	A	510	THR
1	A	591	GLU
1	A	615	TRP
1	A	562	LEU
1	A	578	LYS
1	A	588	VAL
1	A	549	ILE
1	A	606	THR
1	A	547	ASP
1	A	614	THR
1	A	552	SER
1	A	526	THR

*Continued on next page...*

*Continued from previous page...*

Mol	Chain	Res	Type
1	A	611	VAL
1	A	612	THR
1	A	533	LEU
1	A	517	VAL

### 6.3.3 RNA [i](#)

There are no RNA molecules in this entry.

## 6.4 Non-standard residues in protein, DNA, RNA chains [i](#)

There are no non-standard protein/DNA/RNA residues in this entry.

## 6.5 Carbohydrates [i](#)

There are no carbohydrates in this entry.

## 6.6 Ligand geometry [i](#)

14 ligands are modelled in this entry.

In the following table, the Counts columns list the number of bonds for which Mogul statistics could be retrieved, the number of bonds that are observed in the model and the number of bonds that are defined in the chemical component dictionary. The Link column lists molecule types, if any, to which the group is linked. The Z score for a bond length is the number of standard deviations the observed value is removed from the expected value. A bond length with  $|Z| > 2$  is considered an outlier worth inspection. RMSZ is the average root-mean-square of all Z scores of the bond lengths.

Mol	Type	Chain	Res	Link	Bond lengths		
					Counts	RMSZ	#Z>2
2	GLC	A	1	3,2	11,11,12	0.56	0 (0%)
3	BGC	A	2	2	11,11,12	0.39	0 (0%)
2	GLC	A	3	3,2	11,11,12	0.42	0 (0%)
2	GLC	A	4	3,2	11,11,12	0.62	0 (0%)
3	BGC	A	5	2,4	11,11,12	0.52	0 (0%)
4	GLO	A	6	3,2	9,10,11	0.49	0 (0%)
2	GLC	A	617(B)	2	11,11,12	0.42	0 (0%)
2	GLC	A	618(B)	2	11,11,12	0.66	0 (0%)
2	GLC	A	619(B)	2	11,11,12	0.41	0 (0%)
2	GLC	A	620(B)	2	11,11,12	0.65	0 (0%)



Mol	Type	Chain	Res	Link	Bond lengths		
					Counts	RMSZ	#Z>2
2	GLC	A	621(B)	2	11,11,12	0.46	0 (0%)
2	GLC	A	622(B)	2	11,11,12	0.52	0 (0%)
2	GLC	A	623(B)	2	11,11,12	0.41	0 (0%)
2	GLC	A	7	2,4	11,11,12	0.43	0 (0%)

In the following table, the Counts columns list the number of angles for which Mogul statistics could be retrieved, the number of angles that are observed in the model and the number of angles that are defined in the chemical component dictionary. The Link column lists molecule types, if any, to which the group is linked. The Z score for a bond angle is the number of standard deviations the observed value is removed from the expected value. A bond angle with  $|Z| > 2$  is considered an outlier worth inspection. RMSZ is the average root-mean-square of all Z scores of the bond angles.

Mol	Type	Chain	Res	Link	Bond angles		
					Counts	RMSZ	#Z>2
2	GLC	A	1	3,2	13,15,17	1.37	0 (0%)
3	BGC	A	2	2	13,15,17	0.88	0 (0%)
2	GLC	A	3	3,2	13,15,17	0.93	0 (0%)
2	GLC	A	4	3,2	13,15,17	0.86	0 (0%)
3	BGC	A	5	2,4	13,15,17	1.08	0 (0%)
4	GLO	A	6	3,2	10,13,14	0.84	0 (0%)
2	GLC	A	617(B)	2	13,15,17	1.38	0 (0%)
2	GLC	A	618(B)	2	13,15,17	1.57	0 (0%)
2	GLC	A	619(B)	2	13,15,17	0.47	0 (0%)
2	GLC	A	620(B)	2	13,15,17	1.23	0 (0%)
2	GLC	A	621(B)	2	13,15,17	1.07	0 (0%)
2	GLC	A	622(B)	2	13,15,17	0.91	0 (0%)
2	GLC	A	623(B)	2	13,15,17	1.02	0 (0%)
2	GLC	A	7	2,4	13,15,17	0.68	0 (0%)

In the following table, the Chirals column lists the number of chiral outliers, the number of chiral centers analysed, the number of these observed in the model and the number defined in the chemical component dictionary. Similar counts are reported in the Torsion and Rings columns. '-' means no outliers of that kind were identified.

Mol	Type	Chain	Res	Link	Chirals	Torsions	Rings
2	GLC	A	1	3,2	-	0,2,19,22	0,1,1,1
3	BGC	A	2	2	-	0,2,19,22	0,1,1,1
2	GLC	A	3	3,2	-	0,2,19,22	0,1,1,1
2	GLC	A	4	3,2	-	0,2,19,22	0,1,1,1
3	BGC	A	5	2,4	-	0,2,19,22	0,1,1,1
4	GLO	A	6	3,2	-	0,14,14,16	0,0,0,0
2	GLC	A	617(B)	2	-	0,2,19,22	0,1,1,1

*Continued on next page...*

*Continued from previous page...*

Mol	Type	Chain	Res	Link	Chirals	Torsions	Rings
2	GLC	A	618(B)	2	-	0,2,19,22	0,1,1,1
2	GLC	A	619(B)	2	-	0,2,19,22	0,1,1,1
2	GLC	A	620(B)	2	-	0,2,19,22	0,1,1,1
2	GLC	A	621(B)	2	-	0,2,19,22	0,1,1,1
2	GLC	A	622(B)	2	1,1,5,5	0,2,19,22	0,1,1,1
2	GLC	A	623(B)	2	1,1,5,5	0,2,19,22	0,1,1,1
2	GLC	A	7	2,4	-	0,2,19,22	0,1,1,1

There are no bond-length outliers.

There are no bond-angle outliers.

All chiral outliers are listed below.

Mol	Chain	Res	Type	Atoms
2	A	622(B)	GLC	C1
2	A	623(B)	GLC	C1

There are no torsion outliers.

There are no ring outliers.

## 6.7 Other polymers [i](#)

There are no such molecules in this entry.

## 6.8 Polymer linkage issues [i](#)

There are no chain breaks in this entry.

## 7 Chemical shift validation

No chemical shift data were provided