



# Full wwPDB X-ray Structure Validation Report ⓘ

Oct 2, 2017 – 05:08 AM EDT

PDB ID : 3AEM  
Title : Reaction intermediate structure of Entamoeba histolytica methionine gamma-lyase 1 containing Michaelis complex and methionine imine-pyridoxamine-5'-phosphate  
Authors : Karaki, T.; Sato, D.; Shimizu, A.; Nozaki, T.; Harada, S.  
Deposited on : unknown  
Resolution : 2.20 Å(reported)

This is a Full wwPDB X-ray Structure Validation Report for a publicly released PDB entry.

We welcome your comments at [validation@mail.wwpdb.org](mailto:validation@mail.wwpdb.org)

A user guide is available at

<http://wwpdb.org/validation/2016/XrayValidationReportHelp>

with specific help available everywhere you see the ⓘ symbol.

---

The following versions of software and data (see [references ⓘ](#)) were used in the production of this report:

MolProbity : 4.02b-467  
Mogul : 1.7.2 (RC1), CSD as538be (2017)  
Xtriage (Phenix) : 1.9-1692  
EDS : rb-20030345  
Percentile statistics : 20161228.v01 (using entries in the PDB archive December 28th 2016)  
Refmac : 5.8.0135  
CCP4 : 6.5.0  
Ideal geometry (proteins) : Engh & Huber (2001)  
Ideal geometry (DNA, RNA) : Parkinson et al. (1996)  
Validation Pipeline (wwPDB-VP) : rb-20030345

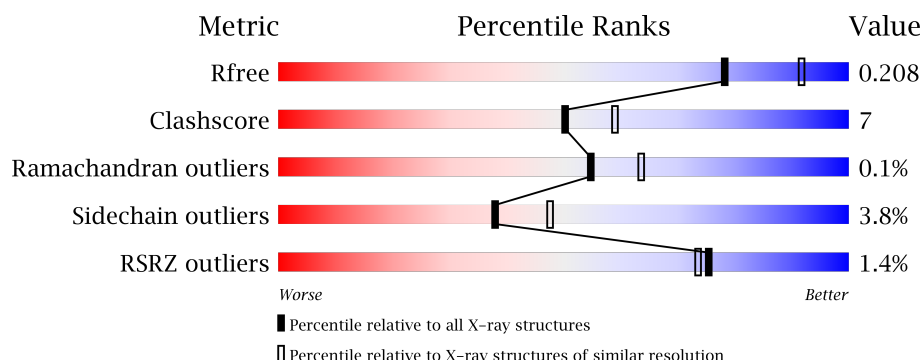
# 1 Overall quality at a glance

The following experimental techniques were used to determine the structure:

*X-RAY DIFFRACTION*

The reported resolution of this entry is 2.20 Å.

Percentile scores (ranging between 0-100) for global validation metrics of the entry are shown in the following graphic. The table shows the number of entries on which the scores are based.



Metric	Whole archive (#Entries)	Similar resolution (#Entries, resolution range(Å))
$R_{free}$	100719	4002 (2.20-2.20)
Clashscore	112137	4730 (2.20-2.20)
Ramachandran outliers	110173	4656 (2.20-2.20)
Sidechain outliers	110143	4657 (2.20-2.20)
RSRZ outliers	101464	4033 (2.20-2.20)

The table below summarises the geometric issues observed across the polymeric chains and their fit to the electron density. The red, orange, yellow and green segments on the lower bar indicate the fraction of residues that contain outliers for  $\geq 3$ , 2, 1 and 0 types of geometric quality criteria. A grey segment represents the fraction of residues that are not modelled. The numeric value for each fraction is indicated below the corresponding segment, with a dot representing fractions  $\leq 5\%$ . The upper red bar (where present) indicates the fraction of residues that have poor fit to the electron density. The numeric value is given above the bar.

Mol	Chain	Length	Quality of chain
1	A	389	<div> <div>0.1%</div> <div> <div></div> <div>84%</div> <div>13%</div> <div>..</div> </div> </div>
1	B	389	<div> <div>2%</div> <div> <div></div> <div>87%</div> <div>11%</div> <div>..</div> </div> </div>
1	D	389	<div> <div>0.1%</div> <div> <div></div> <div>83%</div> <div>14%</div> <div>..</div> </div> </div>
2	C	389	<div> <div>2%</div> <div> <div></div> <div>87%</div> <div>12%</div> <div>..</div> </div> </div>

The following table lists non-polymeric compounds, carbohydrate monomers and non-standard residues in protein, DNA, RNA chains that are outliers for geometric or electron-density-fit crite-

ria:

Mol	Type	Chain	Res	Chirality	Geometry	Clashes	Electron density
5	GOL	A	2009	-	-	-	X
6	MET	C	2003	-	-	X	X

## 2 Entry composition

There are 7 unique types of molecules in this entry. The entry contains 12782 atoms, of which 0 are hydrogens and 0 are deuteriums.

In the tables below, the ZeroOcc column contains the number of atoms modelled with zero occupancy, the AltConf column contains the number of residues with at least one atom in alternate conformation and the Trace column contains the number of residues modelled with at most 2 atoms.

- Molecule 1 is a protein called Methionine gamma-lyase.

Mol	Chain	Residues	Atoms					ZeroOcc	AltConf	Trace
1	A	387	Total	C	N	O	S	0	1	0
			2952	1878	497	553	24			
1	B	386	Total	C	N	O	S	0	1	0
			2937	1867	495	551	24			
1	D	384	Total	C	N	O	S	0	1	0
			2923	1859	492	548	24			

There are 3 discrepancies between the modelled and reference sequences:

Chain	Residue	Modelled	Actual	Comment	Reference
A	308	LEU	SER	SEE REMARK 999	UNP Q86D28
B	808	LEU	SER	SEE REMARK 999	UNP Q86D28
D	1808	LEU	SER	SEE REMARK 999	UNP Q86D28

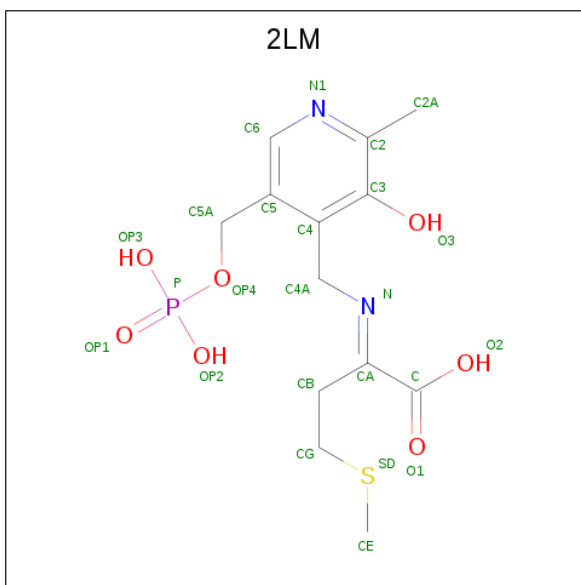
- Molecule 2 is a protein called Methionine gamma-lyase.

Mol	Chain	Residues	Atoms					ZeroOcc	AltConf	Trace
2	C	387	Total	C	N	O	P S	0	1	0
			2967	1886	498	558	1 24			

There is a discrepancy between the modelled and reference sequences:

Chain	Residue	Modelled	Actual	Comment	Reference
C	1308	LEU	SER	SEE REMARK 999	UNP Q86D28

- Molecule 3 is (2E)-2-[(3-hydroxy-2-methyl-5-[(phosphonoxy)methyl]pyridin-4-yl)methyl]imino-4-(methylsulfanyl)butanoic acid (three-letter code: 2LM) (formula: C<sub>13</sub>H<sub>19</sub>N<sub>2</sub>O<sub>7</sub>PS).



Mol	Chain	Residues	Atoms						ZeroOcc	AltConf
3	A	1	Total	C	N	O	P	S	0	0
			24	13	2	7	1	1		
3	B	1	Total	C	N	O	P	S	0	0
			24	13	2	7	1	1		
3	D	1	Total	C	N	O	P	S	0	0
			24	13	2	7	1	1		

- Molecule 4 is SULFATE ION (three-letter code: SO<sub>4</sub>) (formula: O<sub>4</sub>S).



Mol	Chain	Residues	Atoms			ZeroOcc	AltConf
4	A	1	Total	O	S	0	0
			5	4	1		

*Continued on next page...*

*Continued from previous page...*

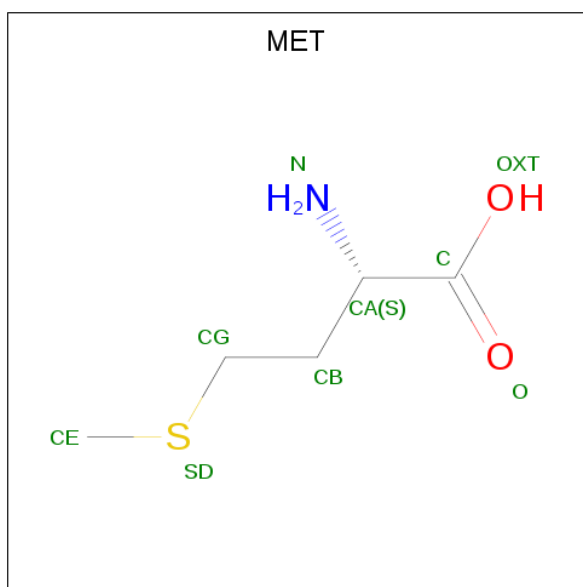
Mol	Chain	Residues	Atoms			ZeroOcc	AltConf
4	B	1	Total	O	S	0	0
			5	4	1		
4	C	1	Total	O	S	0	0
			5	4	1		
4	D	1	Total	O	S	0	0
			5	4	1		

- Molecule 5 is GLYCEROL (three-letter code: GOL) (formula:  $C_3H_8O_3$ ).



Mol	Chain	Residues	Atoms			ZeroOcc	AltConf
5	A	1	Total	C	O	0	0
			6	3	3		
5	C	1	Total	C	O	0	0
			6	3	3		

- Molecule 6 is METHIONINE (three-letter code: MET) (formula:  $C_5H_{11}NO_2S$ ).



Mol	Chain	Residues	Atoms					ZeroOcc	AltConf
6	C	1	Total	C	N	O	S	0	0
			9	5	1	2	1		

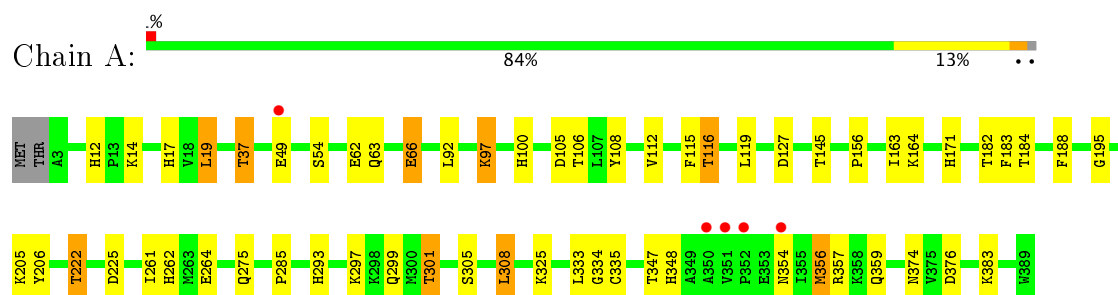
- Molecule 7 is water.

Mol	Chain	Residues	Atoms		ZeroOcc	AltConf
7	A	289	Total	O	0	0
			289	289		
7	B	172	Total	O	0	0
			172	172		
7	C	270	Total	O	0	0
			270	270		
7	D	159	Total	O	0	0
			159	159		

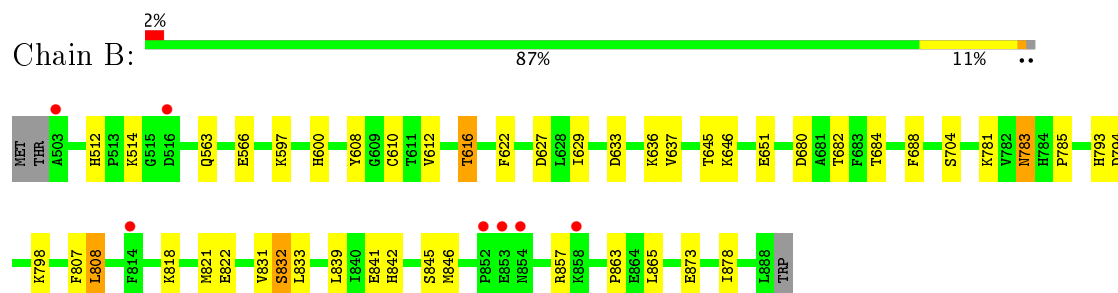
### 3 Residue-property plots [i](#)

These plots are drawn for all protein, RNA and DNA chains in the entry. The first graphic for a chain summarises the proportions of the various outlier classes displayed in the second graphic. The second graphic shows the sequence view annotated by issues in geometry and electron density. Residues are color-coded according to the number of geometric quality criteria for which they contain at least one outlier: green = 0, yellow = 1, orange = 2 and red = 3 or more. A red dot above a residue indicates a poor fit to the electron density ( $RSRZ > 2$ ). Stretches of 2 or more consecutive residues without any outlier are shown as a green connector. Residues present in the sample, but not in the model, are shown in grey.

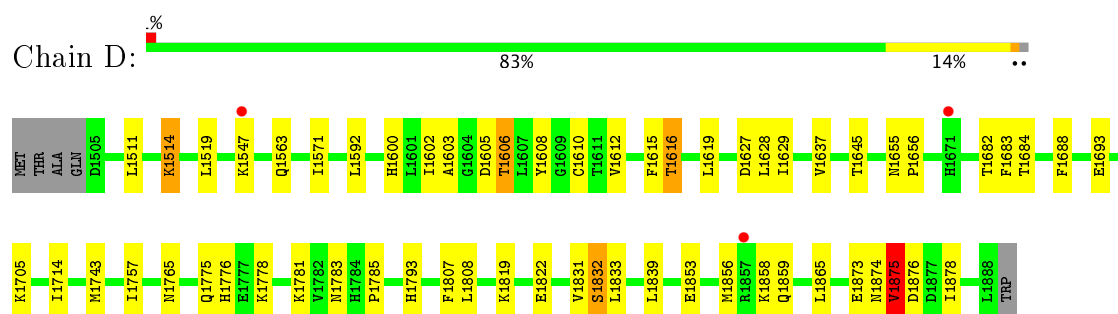
#### • Molecule 1: Methionine gamma-lyase



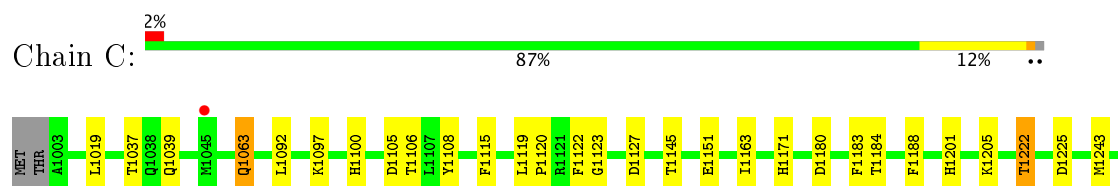
#### • Molecule 1: Methionine gamma-lyase



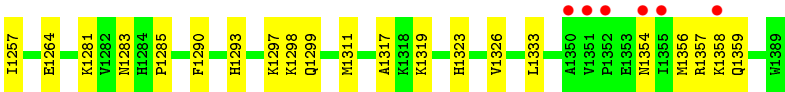
#### • Molecule 1: Methionine gamma-lyase



#### • Molecule 2: Methionine gamma-lyase







## 4 Data and refinement statistics

Property	Value	Source
Space group	P 1 21 1	Depositor
Cell constants a, b, c, $\alpha$ , $\beta$ , $\gamma$	99.09 Å   85.33 Å   114.33 Å 90.00°   101.90°   90.00°	Depositor
Resolution (Å)	48.48 – 2.20 48.48 – 2.20	Depositor EDS
% Data completeness (in resolution range)	99.7 (48.48-2.20) 99.7 (48.48-2.20)	Depositor EDS
$R_{merge}$	0.09	Depositor
$R_{sym}$	(Not available)	Depositor
$\langle I/\sigma(I) \rangle$ <sup>1</sup>	3.80 (at 2.20 Å)	Xtriage
Refinement program	REFMAC	Depositor
R, $R_{free}$	0.151   ,   0.196 0.172   ,   0.208	Depositor DCC
$R_{free}$ test set	4738 reflections (5.27%)	DCC
Wilson B-factor (Å <sup>2</sup> )	22.2	Xtriage
Anisotropy	0.138	Xtriage
Bulk solvent $k_{sol}$ (e/Å <sup>3</sup> ), $B_{sol}$ (Å <sup>2</sup> )	0.35 , 42.1	EDS
L-test for twinning <sup>2</sup>	$\langle  L  \rangle = 0.50$ , $\langle L^2 \rangle = 0.34$	Xtriage
Estimated twinning fraction	No twinning to report.	Xtriage
$F_o, F_c$ correlation	0.95	EDS
Total number of atoms	12782	wwPDB-VP
Average B, all atoms (Å <sup>2</sup> )	43.0	wwPDB-VP

Xtriage's analysis on translational NCS is as follows: *The largest off-origin peak in the Patterson function is 3.53% of the height of the origin peak. No significant pseudotranslation is detected.*

<sup>1</sup>Intensities estimated from amplitudes.

<sup>2</sup>Theoretical values of  $\langle |L| \rangle$ ,  $\langle L^2 \rangle$  for acentric reflections are 0.5, 0.333 respectively for untwinned datasets, and 0.375, 0.2 for perfectly twinned datasets.

## 5 Model quality

### 5.1 Standard geometry

Bond lengths and bond angles in the following residue types are not validated in this section: 2LM, GOL, LLP, SO4

The Z score for a bond length (or angle) is the number of standard deviations the observed value is removed from the expected value. A bond length (or angle) with  $|Z| > 5$  is considered an outlier worth inspection. RMSZ is the root-mean-square of all Z scores of the bond lengths (or angles).

Mol	Chain	Bond lengths		Bond angles	
		RMSZ	# Z  >5	RMSZ	# Z  >5
1	A	0.80	2/3018 (0.1%)	0.75	3/4080 (0.1%)
1	B	0.65	0/3001	0.67	1/4057 (0.0%)
1	D	0.63	0/2987	0.68	2/4038 (0.0%)
2	C	0.81	0/3008	0.74	0/4066
All	All	0.73	2/12014 (0.0%)	0.71	6/16241 (0.0%)

Chiral center outliers are detected by calculating the chiral volume of a chiral center and verifying if the center is modelled as a planar moiety or with the opposite hand. A planarity outlier is detected by checking planarity of atoms in a peptide group, atoms in a mainchain group or atoms of a sidechain that are expected to be planar.

Mol	Chain	#Chirality outliers	#Planarity outliers
2	C	0	1

All (2) bond length outliers are listed below:

Mol	Chain	Res	Type	Atoms	Z	Observed(Å)	Ideal(Å)
1	A	264	GLU	CG-CD	5.31	1.59	1.51
1	A	66	GLU	CG-CD	5.21	1.59	1.51

All (6) bond angle outliers are listed below:

Mol	Chain	Res	Type	Atoms	Z	Observed(°)	Ideal(°)
1	D	1519	LEU	CA-CB-CG	5.96	129.01	115.30
1	A	308	LEU	CB-CG-CD2	-5.78	101.17	111.00
1	D	1875	VAL	CB-CA-C	-5.46	101.02	111.40
1	A	19	LEU	CA-CB-CG	5.31	127.51	115.30
1	B	808	LEU	CA-CB-CG	5.27	127.42	115.30
1	A	19	LEU	CB-CG-CD2	5.20	119.84	111.00

There are no chirality outliers.

All (1) planarity outliers are listed below:

Mol	Chain	Res	Type	Group
2	C	1201	HIS	Peptide

## 5.2 Too-close contacts ⓘ

In the following table, the Non-H and H(model) columns list the number of non-hydrogen atoms and hydrogen atoms in the chain respectively. The H(added) column lists the number of hydrogen atoms added and optimized by MolProbity. The Clashes column lists the number of clashes within the asymmetric unit, whereas Symm-Clashes lists symmetry related clashes.

Mol	Chain	Non-H	H(model)	H(added)	Clashes	Symm-Clashes
1	A	2952	0	2957	50	0
1	B	2937	0	2947	33	0
1	D	2923	0	2934	44	0
2	C	2967	0	2960	45	0
3	A	24	0	15	4	0
3	B	24	0	15	1	0
3	D	24	0	15	3	0
4	A	5	0	0	0	0
4	B	5	0	0	0	0
4	C	5	0	0	0	0
4	D	5	0	0	0	0
5	A	6	0	8	0	0
5	C	6	0	8	0	0
6	C	9	0	8	6	0
7	A	289	0	0	17	0
7	B	172	0	0	3	0
7	C	270	0	0	8	0
7	D	159	0	0	5	0
All	All	12782	0	11867	157	0

The all-atom clashscore is defined as the number of clashes found per 1000 atoms (including hydrogen atoms). The all-atom clashscore for this structure is 7.

All (157) close contacts within the same asymmetric unit are listed below, sorted by their clash magnitude.

Atom-1	Atom-2	Interatomic distance (Å)	Clash overlap (Å)
2:C:1205:LLP:H4'1	6:C:2003:MET:N	1.66	1.11
1:B:822:GLU:OE2	2:C:1037:THR:HG22	1.52	1.07

*Continued on next page...*

*Continued from previous page...*

Atom-1	Atom-2	Interatomic distance (Å)	Clash overlap (Å)
2:C:1205:LLP:C4'	6:C:2003:MET:N	2.20	1.04
1:A:222:THR:HG22	1:A:225:ASP:H	1.31	0.94
1:A:63:GLN:HG2	7:A:3525:HOH:O	1.67	0.93
2:C:1092:LEU:HD21	2:C:1119:LEU:HD22	1.48	0.92
2:C:1357:ARG:HA	7:C:3306:HOH:O	1.73	0.87
2:C:1108:TYR:CE1	6:C:2003:MET:N	2.44	0.85
2:C:1222:THR:HG22	2:C:1225:ASP:H	1.45	0.80
2:C:1222:THR:HG21	7:C:3559:HOH:O	1.80	0.79
1:B:612:VAL:O	1:B:616:THR:HB	1.85	0.76
1:A:188:PHE:HA	1:A:301:THR:HG22	1.69	0.75
1:D:1592:LEU:HD21	1:D:1619:LEU:HD22	1.67	0.75
1:D:1781:LYS:HD3	1:D:1783:ASN:ND2	2.02	0.74
1:A:222:THR:HG21	7:A:3061:HOH:O	1.87	0.74
1:A:92:LEU:HD21	1:A:119:LEU:HD22	1.69	0.73
1:D:1612:VAL:O	1:D:1616:THR:HB	1.88	0.73
2:C:1106:THR:HG22	2:C:1359:GLN:HG2	1.71	0.73
2:C:1108:TYR:OH	6:C:2003:MET:HG3	1.88	0.72
1:B:600:HIS:HD2	1:B:645:THR:OG1	1.73	0.71
1:A:106:THR:HG22	1:A:359:GLN:HG2	1.72	0.71
1:D:1757:ILE:HD12	7:D:3224:HOH:O	1.91	0.70
1:A:66:GLU:HB3	7:A:3130:HOH:O	1.90	0.69
2:C:1319:LYS:O	2:C:1323:HIS:HD2	1.76	0.69
1:A:112:VAL:O	1:A:116:THR:HB	1.93	0.68
1:D:1781:LYS:HD3	1:D:1783:ASN:HD21	1.57	0.68
1:B:600:HIS:HE1	1:B:627:ASP:OD2	1.78	0.67
2:C:1100:HIS:HE1	2:C:1127:ASP:OD2	1.78	0.67
1:A:297:LYS:HD3	7:A:3315:HOH:O	1.94	0.66
2:C:1243:MET:CE	1:D:1743:MET:HE1	2.26	0.66
2:C:1100:HIS:HD2	2:C:1145:THR:OG1	1.79	0.65
2:C:1063:GLN:HG2	7:C:3382:HOH:O	1.96	0.65
1:A:37:THR:HG23	1:D:1822:GLU:OE1	1.97	0.64
1:A:54:SER:HB2	1:D:1714:ILE:HD12	1.80	0.63
1:A:100:HIS:HE1	1:A:127:ASP:OD2	1.83	0.62
1:A:335[A]:CYS:SG	7:A:3799:HOH:O	2.27	0.62
1:D:1600:HIS:HD2	1:D:1645:THR:OG1	1.83	0.61
2:C:1163:ILE:H	2:C:1299:GLN:HE22	1.49	0.61
1:B:512:HIS:HE1	1:D:1873:GLU:OE1	1.82	0.61
1:A:301:THR:HG23	7:A:3168:HOH:O	2.01	0.60
1:A:285:PRO:O	1:A:293:HIS:HD2	1.85	0.59
1:A:383:LYS:NZ	7:A:3837:HOH:O	2.31	0.59
1:A:163:ILE:H	1:A:299:GLN:HE22	1.50	0.59

*Continued on next page...*

*Continued from previous page...*

Atom-1	Atom-2	Interatomic distance (Å)	Clash overlap (Å)
1:A:222:THR:CG2	1:A:225:ASP:H	2.11	0.59
1:B:597:LYS:HD2	2:C:1097:LYS:HD2	1.84	0.58
1:D:1874:ASN:HD21	1:D:1876:ASP:HB2	1.66	0.58
1:D:1605:ASP:OD2	1:D:1606:THR:HG22	2.03	0.58
1:D:1606:THR:HG21	7:D:3611:HOH:O	2.02	0.58
2:C:1264:GLU:HG3	7:C:3561:HOH:O	2.03	0.58
2:C:1205:LLP:HE3	6:C:2003:MET:HA	1.85	0.58
1:A:357:ARG:HA	7:A:3145:HOH:O	2.04	0.57
1:D:1682:THR:HB	3:D:2004:2LM:H2A1	1.87	0.57
1:A:184:THR:HG22	1:A:188:PHE:HB2	1.86	0.57
1:A:356:MET:HE1	7:A:3360:HOH:O	2.04	0.57
1:D:1684:THR:HG22	1:D:1688:PHE:HB2	1.87	0.56
2:C:1243:MET:HE1	1:D:1743:MET:CE	2.36	0.56
2:C:1243:MET:CE	1:D:1743:MET:CE	2.84	0.56
1:B:842:HIS:HD2	1:B:845:SER:OG	1.88	0.56
1:A:100:HIS:HD2	1:A:145:THR:OG1	1.89	0.55
1:A:66:GLU:HG3	7:A:3548:HOH:O	2.06	0.55
1:D:1765:ASN:ND2	1:D:1875:VAL:HG22	2.22	0.55
1:A:106:THR:HG21	7:A:3207:HOH:O	2.07	0.55
1:A:301:THR:CG2	7:A:3168:HOH:O	2.53	0.55
1:D:1808:LEU:HD21	1:D:1865:LEU:HD22	1.90	0.54
1:A:156:PRO:HD3	1:A:348:HIS:NE2	2.23	0.54
1:A:14:LYS:HE3	7:A:3337:HOH:O	2.06	0.53
1:D:1615:PHE:HA	1:D:1619:LEU:HG	1.89	0.53
1:D:1606:THR:HB	1:D:1859:GLN:HG2	1.89	0.53
1:A:156:PRO:HD3	1:A:348:HIS:CE1	2.44	0.53
2:C:1171:HIS:HD2	7:C:3026:HOH:O	1.91	0.52
1:D:1785:PRO:O	1:D:1793:HIS:HD2	1.92	0.52
2:C:1285:PRO:O	2:C:1293:HIS:HD2	1.92	0.52
1:A:105:ASP:OD1	1:A:106:THR:HG23	2.10	0.51
1:A:374:ASN:HD21	1:A:376:ASP:HB2	1.75	0.51
1:D:1705:LYS:HZ1	3:D:2004:2LM:HBA	1.76	0.50
1:A:17:HIS:HD2	7:A:3672:HOH:O	1.93	0.50
1:D:1608:TYR:CE2	1:D:1610:CYS:HB2	2.46	0.50
1:D:1603:ALA:HB3	1:D:1628:LEU:HD22	1.93	0.50
1:D:1514:LYS:HD3	7:D:3558:HOH:O	2.11	0.49
1:D:1819:LYS:HD3	7:D:3249:HOH:O	2.11	0.49
1:A:205:LYS:HE2	3:A:2001:2LM:H4A	1.95	0.49
1:B:842:HIS:HE1	1:B:863:PRO:O	1.96	0.49
1:D:1819:LYS:CD	7:D:3249:HOH:O	2.60	0.49
1:A:115:PHE:HA	1:A:119:LEU:HG	1.96	0.48

*Continued on next page...*

*Continued from previous page...*

Atom-1	Atom-2	Interatomic distance (Å)	Clash overlap (Å)
1:A:182:THR:HB	3:A:2001:2LM:H2A1	1.96	0.48
1:B:794:ASP:O	1:B:798:LYS:HE2	2.12	0.48
1:B:808:LEU:HB3	7:B:3482:HOH:O	2.12	0.48
1:A:261:ILE:HD11	2:C:1257:ILE:HG12	1.95	0.48
1:D:1874:ASN:ND2	1:D:1876:ASP:HB2	2.28	0.48
1:B:682:THR:HB	3:B:2002:2LM:H2A1	1.94	0.48
1:B:646:LYS:HE3	7:B:3764:HOH:O	2.14	0.48
1:B:873:GLU:HB2	1:B:878:ILE:HD11	1.95	0.48
1:A:205:LYS:CE	3:A:2001:2LM:H4A	2.44	0.48
1:B:822:GLU:OE2	2:C:1037:THR:CG2	2.43	0.48
2:C:1108:TYR:CZ	6:C:2003:MET:N	2.81	0.48
1:B:622:PHE:HB3	2:C:1122:PHE:HB3	1.94	0.47
2:C:1319:LYS:O	2:C:1323:HIS:CD2	2.63	0.47
1:D:1600:HIS:HE1	1:D:1627:ASP:OD2	1.97	0.47
1:A:108:TYR:CE1	3:A:2001:2LM:N	2.83	0.47
1:B:651:GLU:HG2	1:B:680:ASP:HB3	1.95	0.47
1:B:785:PRO:O	1:B:793:HIS:HD2	1.98	0.47
2:C:1106:THR:HG21	7:C:3461:HOH:O	2.14	0.46
1:A:54:SER:HB2	1:D:1714:ILE:CD1	2.45	0.46
1:A:100:HIS:CE1	1:A:127:ASP:OD2	2.65	0.46
1:D:1776:HIS:CE1	1:D:1778:LYS:HB2	2.50	0.46
2:C:1100:HIS:CE1	2:C:1127:ASP:OD2	2.63	0.46
1:D:1705:LYS:NZ	3:D:2004:2LM:HBA	2.30	0.46
2:C:1184:THR:HG22	2:C:1188:PHE:HB2	1.98	0.46
2:C:1097:LYS:HG3	2:C:1123:GLY:HA3	1.97	0.45
2:C:1106:THR:HG22	2:C:1359:GLN:HA	1.97	0.45
1:B:808:LEU:CB	7:B:3482:HOH:O	2.65	0.45
1:B:808:LEU:HD21	1:B:865:LEU:HD13	1.98	0.45
1:D:1514:LYS:HE2	1:D:1514:LYS:HB2	1.84	0.45
1:D:1783:ASN:O	1:D:1807:PHE:HB2	2.17	0.45
1:B:608:TYR:CE2	1:B:610:CYS:HB2	2.52	0.45
1:A:262:HIS:O	1:A:305:SER:HB3	2.18	0.44
1:B:629:ILE:HD11	1:B:637:VAL:HA	2.00	0.44
1:B:684:THR:HG22	1:B:688:PHE:HB2	1.99	0.44
1:D:1808:LEU:HD11	1:D:1865:LEU:HD13	1.98	0.44
1:D:1853:GLU:O	1:D:1856:MET:HB3	2.17	0.44
1:A:308:LEU:HB3	7:A:3444:HOH:O	2.17	0.43
1:A:374:ASN:ND2	1:A:376:ASP:HB2	2.32	0.43
2:C:1222:THR:CG2	2:C:1225:ASP:H	2.23	0.43
1:B:514:LYS:H	1:B:514:LYS:HG2	1.59	0.43
2:C:1092:LEU:HD21	2:C:1119:LEU:CD2	2.35	0.43

*Continued on next page...*

*Continued from previous page...*

Atom-1	Atom-2	Interatomic distance (Å)	Clash overlap (Å)
1:D:1831:VAL:O	1:D:1832:SER:HB3	2.19	0.43
1:A:12:HIS:CE1	2:C:1326:VAL:O	2.71	0.43
2:C:1119:LEU:HB2	2:C:1120:PRO:HD3	2.00	0.43
1:B:831:VAL:O	1:B:832:SER:CB	2.67	0.43
1:D:1831:VAL:O	1:D:1832:SER:CB	2.66	0.43
2:C:1115:PHE:HA	2:C:1119:LEU:HG	2.00	0.43
1:B:841:GLU:OE2	1:B:846:MET:HB2	2.19	0.43
1:B:633:ASP:HB3	1:B:636:LYS:HD2	2.01	0.43
2:C:1151:GLU:HG3	2:C:1180:ASP:HB3	2.00	0.43
1:B:600:HIS:CD2	1:B:645:THR:OG1	2.63	0.43
1:B:783:ASN:O	1:B:807:PHE:HB2	2.19	0.42
2:C:1105:ASP:OD2	2:C:1106:THR:HG23	2.19	0.42
2:C:1281:LYS:HE2	7:C:3052:HOH:O	2.19	0.42
1:A:171:HIS:HE1	1:A:195:GLY:O	2.03	0.42
1:B:831:VAL:HG22	7:C:3049:HOH:O	2.20	0.42
1:B:831:VAL:O	1:B:832:SER:HB3	2.18	0.42
2:C:1311:MET:HG3	2:C:1317:ALA:HA	2.01	0.42
1:A:206:TYR:CE2	1:A:334:GLY:HA2	2.55	0.42
1:D:1602:ILE:HG23	1:D:1629:ILE:HG12	2.03	0.41
1:D:1781:LYS:CD	1:D:1783:ASN:ND2	2.78	0.41
2:C:1105:ASP:HB2	2:C:1358:LYS:HD2	2.02	0.41
1:A:66:GLU:CG	7:A:3548:HOH:O	2.64	0.41
2:C:1285:PRO:HA	2:C:1290:PHE:CD2	2.56	0.41
1:D:1655:ASN:HA	1:D:1656:PRO:HA	1.88	0.41
1:A:347:THR:HB	7:A:3345:HOH:O	2.21	0.41
1:B:873:GLU:HG3	1:D:1511:LEU:HD12	2.03	0.41
1:A:97:LYS:HE3	1:A:97:LYS:HB3	1.94	0.41
1:A:62:GLU:O	1:A:66:GLU:HG3	2.21	0.41
1:D:1629:ILE:HD11	1:D:1637:VAL:HA	2.03	0.41
1:B:821:MET:SD	1:B:842:HIS:HB2	2.62	0.41
1:A:222:THR:HG22	1:A:225:ASP:N	2.15	0.40
1:B:818:LYS:HG3	2:C:1037:THR:HG21	2.02	0.40

There are no symmetry-related clashes.

## 5.3 Torsion angles ⓘ

### 5.3.1 Protein backbone ⓘ

In the following table, the Percentiles column shows the percent Ramachandran outliers of the chain as a percentile score with respect to all X-ray entries followed by that with respect to entries



of similar resolution.

The Analysed column shows the number of residues for which the backbone conformation was analysed, and the total number of residues.

Mol	Chain	Analysed	Favoured	Allowed	Outliers	Percentiles	
1	A	386/389 (99%)	375 (97%)	11 (3%)	0	100	100
1	B	385/389 (99%)	374 (97%)	10 (3%)	1 (0%)	44	49
1	D	383/389 (98%)	375 (98%)	7 (2%)	1 (0%)	44	49
2	C	385/389 (99%)	375 (97%)	10 (3%)	0	100	100
All	All	1539/1556 (99%)	1499 (97%)	38 (2%)	2 (0%)	55	63

All (2) Ramachandran outliers are listed below:

Mol	Chain	Res	Type
1	D	1832	SER
1	B	832	SER

### 5.3.2 Protein sidechains ⓘ

In the following table, the Percentiles column shows the percent sidechain outliers of the chain as a percentile score with respect to all X-ray entries followed by that with respect to entries of similar resolution.

The Analysed column shows the number of residues for which the sidechain conformation was analysed, and the total number of residues.

Mol	Chain	Analysed	Rotameric	Outliers	Percentiles	
1	A	321/322 (100%)	307 (96%)	14 (4%)	33	40
1	B	320/322 (99%)	311 (97%)	9 (3%)	49	61
1	D	319/322 (99%)	305 (96%)	14 (4%)	33	40
2	C	320/321 (100%)	309 (97%)	11 (3%)	42	53
All	All	1280/1287 (100%)	1232 (96%)	48 (4%)	38	47

All (48) residues with a non-rotameric sidechain are listed below:

Mol	Chain	Res	Type
1	A	19	LEU
1	A	37	THR
1	A	49	GLU
1	A	97	LYS

*Continued on next page...*

*Continued from previous page...*

Mol	Chain	Res	Type
1	A	116	THR
1	A	164	LYS
1	A	183	PHE
1	A	222	THR
1	A	275	GLN
1	A	301	THR
1	A	325	LYS
1	A	333	LEU
1	A	354	ASN
1	A	356	MET
1	B	563	GLN
1	B	566	GLU
1	B	616	THR
1	B	704	SER
1	B	781	LYS
1	B	783	ASN
1	B	833	LEU
1	B	839	LEU
1	B	857	ARG
2	C	1019	LEU
2	C	1039	GLN
2	C	1063	GLN
2	C	1183	PHE
2	C	1222	THR
2	C	1283	ASN
2	C	1297	LYS
2	C	1298	LYS
2	C	1333	LEU
2	C	1354	ASN
2	C	1356	MET
1	D	1514	LYS
1	D	1547	LYS
1	D	1563	GLN
1	D	1571	ILE
1	D	1606	THR
1	D	1616	THR
1	D	1683	PHE
1	D	1693	GLU
1	D	1775	GLN
1	D	1833	LEU
1	D	1839	LEU
1	D	1858	LYS

*Continued on next page...*

*Continued from previous page...*

Mol	Chain	Res	Type
1	D	1875	VAL
1	D	1878	ILE

Some sidechains can be flipped to improve hydrogen bonding and reduce clashes. All (39) such sidechains are listed below:

Mol	Chain	Res	Type
1	A	17	HIS
1	A	28	GLN
1	A	100	HIS
1	A	265	ASN
1	A	275	GLN
1	A	293	HIS
1	A	299	GLN
1	A	348	HIS
1	A	354	ASN
1	A	374	ASN
1	B	512	HIS
1	B	517	HIS
1	B	528	GLN
1	B	563	GLN
1	B	600	HIS
1	B	765	ASN
1	B	783	ASN
1	B	793	HIS
1	B	799	GLN
1	B	842	HIS
2	C	1039	GLN
2	C	1100	HIS
2	C	1117	HIS
2	C	1265	ASN
2	C	1283	ASN
2	C	1293	HIS
2	C	1299	GLN
2	C	1323	HIS
2	C	1348	HIS
2	C	1354	ASN
2	C	1374	ASN
1	D	1517	HIS
1	D	1600	HIS
1	D	1617	HIS
1	D	1765	ASN
1	D	1775	GLN

*Continued on next page...*

*Continued from previous page...*

Mol	Chain	Res	Type
1	D	1783	ASN
1	D	1793	HIS
1	D	1874	ASN

### 5.3.3 RNA ⓘ

There are no RNA molecules in this entry.

## 5.4 Non-standard residues in protein, DNA, RNA chains ⓘ

1 non-standard protein/DNA/RNA residue is modelled in this entry.

In the following table, the Counts columns list the number of bonds (or angles) for which Mogul statistics could be retrieved, the number of bonds (or angles) that are observed in the model and the number of bonds (or angles) that are defined in the Chemical Component Dictionary. The Link column lists molecule types, if any, to which the group is linked. The Z score for a bond length (or angle) is the number of standard deviations the observed value is removed from the expected value. A bond length (or angle) with  $|Z| > 2$  is considered an outlier worth inspection. RMSZ is the root-mean-square of all Z scores of the bond lengths (or angles).

Mol	Type	Chain	Res	Link	Bond lengths			Bond angles		
					Counts	RMSZ	# Z  > 2	Counts	RMSZ	# Z  > 2
2	LLP	C	1205	2	24,24,25	2.41	8 (33%)	28,32,34	1.58	4 (14%)

In the following table, the Chirals column lists the number of chiral outliers, the number of chiral centers analysed, the number of these observed in the model and the number defined in the Chemical Component Dictionary. Similar counts are reported in the Torsion and Rings columns. '-' means no outliers of that kind were identified.

Mol	Type	Chain	Res	Link	Chirals	Torsions	Rings
2	LLP	C	1205	2	-	0/15/17/19	0/1/1/1

All (8) bond length outliers are listed below:

Mol	Chain	Res	Type	Atoms	Z	Observed(Å)	Ideal(Å)
2	C	1205	LLP	O3-C3	-5.80	1.23	1.37
2	C	1205	LLP	P-OP2	-2.01	1.46	1.54
2	C	1205	LLP	CD-CE	2.04	1.58	1.51
2	C	1205	LLP	C2-N1	2.28	1.38	1.33
2	C	1205	LLP	C4-C4'	3.33	1.52	1.46
2	C	1205	LLP	C4'-NZ	4.25	1.39	1.27

*Continued on next page...*

*Continued from previous page...*

Mol	Chain	Res	Type	Atoms	Z	Observed(Å)	Ideal(Å)
2	C	1205	LLP	CA-C	4.36	1.56	1.50
2	C	1205	LLP	CE-NZ	5.04	1.57	1.46

All (4) bond angle outliers are listed below:

Mol	Chain	Res	Type	Atoms	Z	Observed(°)	Ideal(°)
2	C	1205	LLP	C4-C4'-NZ	-3.23	108.96	124.66
2	C	1205	LLP	O-C-CA	-2.24	118.83	125.02
2	C	1205	LLP	CB-CA-C	2.71	116.12	111.65
2	C	1205	LLP	OP4-C5'-C5	4.84	119.05	109.32

There are no chirality outliers.

There are no torsion outliers.

There are no ring outliers.

1 monomer is involved in 3 short contacts:

Mol	Chain	Res	Type	Clashes	Symm-Clashes
2	C	1205	LLP	3	0

## 5.5 Carbohydrates [i](#)

There are no carbohydrates in this entry.

## 5.6 Ligand geometry [i](#)

10 ligands are modelled in this entry.

In the following table, the Counts columns list the number of bonds (or angles) for which Mogul statistics could be retrieved, the number of bonds (or angles) that are observed in the model and the number of bonds (or angles) that are defined in the Chemical Component Dictionary. The Link column lists molecule types, if any, to which the group is linked. The Z score for a bond length (or angle) is the number of standard deviations the observed value is removed from the expected value. A bond length (or angle) with  $|Z| > 2$  is considered an outlier worth inspection. RMSZ is the root-mean-square of all Z scores of the bond lengths (or angles).

Mol	Type	Chain	Res	Link	Bond lengths			Bond angles		
					Counts	RMSZ	$\# Z  > 2$	Counts	RMSZ	$\# Z  > 2$
3	2LM	A	2001	-	21,24,24	2.30	3 (14%)	24,33,33	2.50	8 (33%)
4	SO4	A	2005	-	4,4,4	0.11	0	6,6,6	0.35	0
5	GOL	A	2009	-	5,5,5	0.38	0	5,5,5	0.39	0

Mol	Type	Chain	Res	Link	Bond lengths			Bond angles		
					Counts	RMSZ	# Z  > 2	Counts	RMSZ	# Z  > 2
3	2LM	B	2002	-	21,24,24	2.75	2 (9%)	24,33,33	1.75	3 (12%)
4	SO4	B	2006	-	4,4,4	0.22	0	6,6,6	0.17	0
6	MET	C	2003	-	3,8,8	0.77	0	3,9,9	1.61	1 (33%)
4	SO4	C	2007	-	4,4,4	0.11	0	6,6,6	0.19	0
5	GOL	C	2010	-	5,5,5	0.29	0	5,5,5	0.35	0
3	2LM	D	2004	-	21,24,24	2.86	4 (19%)	24,33,33	1.54	5 (20%)
4	SO4	D	2008	-	4,4,4	0.16	0	6,6,6	0.09	0

In the following table, the Chirals column lists the number of chiral outliers, the number of chiral centers analysed, the number of these observed in the model and the number defined in the Chemical Component Dictionary. Similar counts are reported in the Torsion and Rings columns. '-' means no outliers of that kind were identified.

Mol	Type	Chain	Res	Link	Chirals	Torsions	Rings
3	2LM	A	2001	-	-	0/14/19/19	0/1/1/1
4	SO4	A	2005	-	-	0/0/0/0	0/0/0/0
5	GOL	A	2009	-	-	0/4/4/4	0/0/0/0
3	2LM	B	2002	-	-	0/14/19/19	0/1/1/1
4	SO4	B	2006	-	-	0/0/0/0	0/0/0/0
6	MET	C	2003	-	-	0/4/8/8	0/0/0/0
4	SO4	C	2007	-	-	0/0/0/0	0/0/0/0
5	GOL	C	2010	-	-	0/4/4/4	0/0/0/0
3	2LM	D	2004	-	-	0/14/19/19	0/1/1/1
4	SO4	D	2008	-	-	0/0/0/0	0/0/0/0

All (9) bond length outliers are listed below:

Mol	Chain	Res	Type	Atoms	Z	Observed(Å)	Ideal(Å)
3	D	2004	2LM	C4A-N	-11.76	1.29	1.46
3	B	2002	2LM	C4A-N	-11.67	1.29	1.46
3	A	2001	2LM	C4A-N	-9.30	1.32	1.46
3	D	2004	2LM	C3-C2	-2.73	1.38	1.40
3	A	2001	2LM	C-CA	-2.16	1.48	1.52
3	D	2004	2LM	C-CA	-2.08	1.48	1.52
3	A	2001	2LM	CB-CA	2.76	1.54	1.51
3	B	2002	2LM	CB-CA	3.20	1.54	1.51
3	D	2004	2LM	CB-CA	3.50	1.55	1.51

All (17) bond angle outliers are listed below:

Mol	Chain	Res	Type	Atoms	Z	Observed(°)	Ideal(°)
3	A	2001	2LM	CG-CB-CA	-4.52	104.41	112.41
3	A	2001	2LM	C3-C4-C5	-4.00	114.76	118.71
3	D	2004	2LM	OP2-P-OP4	-2.24	100.78	106.73
3	A	2001	2LM	OP2-P-OP4	-2.22	100.83	106.73
3	B	2002	2LM	C4-C4A-N	2.03	122.08	113.97
3	D	2004	2LM	OP2-P-OP1	2.13	118.85	110.50
6	C	2003	MET	CG-CB-CA	2.19	119.25	112.97
3	D	2004	2LM	CG-CB-CA	2.38	116.62	112.41
3	A	2001	2LM	C4-C4A-N	2.41	123.57	113.97
3	A	2001	2LM	C4A-C4-C3	2.59	125.29	121.56
3	D	2004	2LM	CE-SD-CG	2.65	109.86	100.35
3	A	2001	2LM	C6-C5-C4	3.42	120.67	118.13
3	D	2004	2LM	C4A-N-CA	3.46	128.15	121.08
3	B	2002	2LM	CE-SD-CG	4.28	115.72	100.35
3	A	2001	2LM	CE-SD-CG	4.49	116.45	100.35
3	B	2002	2LM	C4A-N-CA	5.05	131.38	121.08
3	A	2001	2LM	C4A-N-CA	7.19	135.75	121.08

There are no chirality outliers.

There are no torsion outliers.

There are no ring outliers.

4 monomers are involved in 14 short contacts:

Mol	Chain	Res	Type	Clashes	Symm-Clashes
3	A	2001	2LM	4	0
3	B	2002	2LM	1	0
6	C	2003	MET	6	0
3	D	2004	2LM	3	0

## 5.7 Other polymers

There are no such residues in this entry.

## 5.8 Polymer linkage issues

There are no chain breaks in this entry.

## 6 Fit of model and data ⓘ

### 6.1 Protein, DNA and RNA chains ⓘ

In the following table, the column labelled ‘#RSRZ> 2’ contains the number (and percentage) of RSRZ outliers, followed by percent RSRZ outliers for the chain as percentile scores relative to all X-ray entries and entries of similar resolution. The OWAB column contains the minimum, median, 95<sup>th</sup> percentile and maximum values of the occupancy-weighted average B-factor per residue. The column labelled ‘Q< 0.9’ lists the number of (and percentage) of residues with an average occupancy less than 0.9.

Mol	Chain	Analysed	<RSRZ>	#RSRZ>2	OWAB(Å <sup>2</sup> )	Q<0.9
1	A	387/389 (99%)	-0.40	5 (1%) 77 75	17, 28, 62, 88	1 (0%)
1	B	386/389 (99%)	-0.05	7 (1%) 69 66	20, 48, 92, 121	1 (0%)
1	D	384/389 (98%)	0.10	3 (0%) 86 85	21, 54, 97, 118	0
2	C	386/389 (99%)	-0.41	7 (1%) 69 66	18, 29, 63, 93	1 (0%)
All	All	1543/1556 (99%)	-0.19	22 (1%) 75 73	17, 36, 88, 121	3 (0%)

All (22) RSRZ outliers are listed below:

Mol	Chain	Res	Type	RSRZ
2	C	1351	VAL	4.2
2	C	1350	ALA	3.6
1	B	854	ASN	3.4
1	B	503	ALA	3.3
1	B	858	LYS	3.0
2	C	1354	ASN	3.0
1	B	853	GLU	2.9
1	D	1857	ARG	2.8
1	A	351	VAL	2.7
2	C	1352	PRO	2.7
1	A	354	ASN	2.6
1	A	352	PRO	2.5
1	D	1671	HIS	2.4
1	B	516	ASP	2.3
2	C	1358	LYS	2.2
1	A	350	ALA	2.2
1	B	814	PHE	2.1
1	B	852	PRO	2.1
2	C	1045	MET	2.1
2	C	1355	ILE	2.0
1	D	1547	LYS	2.0
1	A	49	GLU	2.0



## 6.2 Non-standard residues in protein, DNA, RNA chains [i](#)

In the following table, the Atoms column lists the number of modelled atoms in the group and the number defined in the chemical component dictionary. LLDF column lists the quality of electron density of the group with respect to its neighbouring residues in protein, DNA or RNA chains. The B-factors column lists the minimum, median, 95<sup>th</sup> percentile and maximum values of B factors of atoms in the group. The column labelled 'Q< 0.9' lists the number of atoms with occupancy less than 0.9.

Mol	Type	Chain	Res	Atoms	RSCC	RSR	LLDF	B-factors(Å <sup>2</sup> )	Q<0.9
2	LLP	C	1205	24/25	0.98	0.11	-	19,22,24,31	6

## 6.3 Carbohydrates [i](#)

There are no carbohydrates in this entry.

## 6.4 Ligands [i](#)

In the following table, the Atoms column lists the number of modelled atoms in the group and the number defined in the chemical component dictionary. LLDF column lists the quality of electron density of the group with respect to its neighbouring residues in protein, DNA or RNA chains. The B-factors column lists the minimum, median, 95<sup>th</sup> percentile and maximum values of B factors of atoms in the group. The column labelled 'Q< 0.9' lists the number of atoms with occupancy less than 0.9.

Mol	Type	Chain	Res	Atoms	RSCC	RSR	LLDF	B-factors(Å <sup>2</sup> )	Q<0.9
6	MET	C	2003	9/9	0.87	0.21	4.72	25,30,42,45	0
5	GOL	A	2009	6/6	0.84	0.17	2.36	42,45,46,47	0
5	GOL	C	2010	6/6	0.92	0.14	1.98	38,42,43,43	0
3	2LM	D	2004	24/24	0.95	0.14	1.49	19,31,40,52	0
3	2LM	B	2002	24/24	0.95	0.13	0.62	17,30,40,52	0
3	2LM	A	2001	24/24	0.95	0.12	0.60	7,17,33,43	0
4	SO4	C	2007	5/5	0.94	0.25	-	58,59,60,60	0
4	SO4	A	2005	5/5	0.95	0.25	-	58,59,60,60	0
4	SO4	B	2006	5/5	0.94	0.28	-	71,71,72,72	0
4	SO4	D	2008	5/5	0.95	0.33	-	72,72,72,73	0

## 6.5 Other polymers [i](#)

There are no such residues in this entry.