



Full wwPDB X-ray Structure Validation Report ⓘ

Jan 16, 2018 – 08:16 PM EST

PDB ID : 4AGU
Title : CRYSTAL STRUCTURE OF THE HUMAN CDKL1 KINASE DOMAIN
Authors : Canning, P.; Sharpe, T.D.; Allerston, C.; Savitsky, P.; Pike, A.C.W.; Muniz, J.R.C.; Chaikuad, A.; Kuo, K.; Burgess-Brown, N.; Ayinampudi, V.; Zhang, Y.; Thangaratnarajah, C.; Ugochukwu, E.; Vollmar, M.; Krojer, T.; Weigelt, J.; Arrowsmith, C.H.; Edwards, A.M.; Bountra, C.; von Delft, F.; Knapp, S.; Bullock, A.
Deposited on : 2012-01-31
Resolution : 2.40 Å(reported)

This is a Full wwPDB X-ray Structure Validation Report for a publicly released PDB entry.

We welcome your comments at validation@mail.wwpdb.org

A user guide is available at

<http://wwpdb.org/validation/2016/XrayValidationReportHelp>

with specific help available everywhere you see the ⓘ symbol.

The following versions of software and data (see [references ⓘ](#)) were used in the production of this report:

MolProbity	:	4.02b-467
Mogul	:	1.7.2 (RC1), CSD as538be (2017)
Xtriage (Phenix)	:	1.9-1692
EDS	:	rb-20030736
Percentile statistics	:	20161228.v01 (using entries in the PDB archive December 28th 2016)
Refmac	:	5.8.0135
CCP4	:	6.5.0
Ideal geometry (proteins)	:	Engh & Huber (2001)
Ideal geometry (DNA, RNA)	:	Parkinson et al. (1996)
Validation Pipeline (wwPDB-VP)	:	rb-20030736

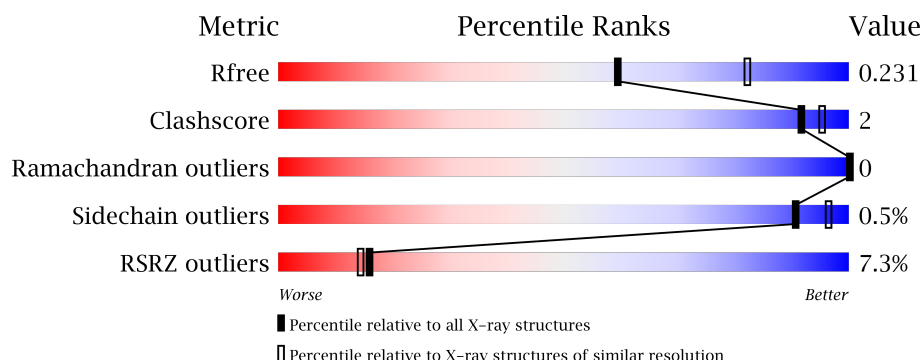
1 Overall quality at a glance

The following experimental techniques were used to determine the structure:

X-RAY DIFFRACTION

The reported resolution of this entry is 2.40 Å.

Percentile scores (ranging between 0-100) for global validation metrics of the entry are shown in the following graphic. The table shows the number of entries on which the scores are based.



Metric	Whole archive (#Entries)	Similar resolution (#Entries, resolution range(Å))
R_{free}	100719	3166 (2.40-2.40)
Clashscore	112137	3674 (2.40-2.40)
Ramachandran outliers	110173	3616 (2.40-2.40)
Sidechain outliers	110143	3617 (2.40-2.40)
RSRZ outliers	101464	3195 (2.40-2.40)

The table below summarises the geometric issues observed across the polymeric chains and their fit to the electron density. The red, orange, yellow and green segments on the lower bar indicate the fraction of residues that contain outliers for ≥ 3 , 2, 1 and 0 types of geometric quality criteria. A grey segment represents the fraction of residues that are not modelled. The numeric value for each fraction is indicated below the corresponding segment, with a dot representing fractions $\leq 5\%$. The upper red bar (where present) indicates the fraction of residues that have poor fit to the electron density. The numeric value is given above the bar.

Mol	Chain	Length	Quality of chain
1	A	311	<div> <div>5%</div> <div> <div></div> <div>83%</div> <div>6%</div> <div>11%</div> </div> </div>
1	B	311	<div> <div>6%</div> <div> <div></div> <div>84%</div> <div>5%</div> <div>11%</div> </div> </div>
1	C	311	<div> <div>9%</div> <div> <div></div> <div>86%</div> <div>•</div> <div>11%</div> </div> </div>

The following table lists non-polymeric compounds, carbohydrate monomers and non-standard residues in protein, DNA, RNA chains that are outliers for geometric or electron-density-fit criteria:

Mol	Type	Chain	Res	Chirality	Geometry	Clashes	Electron density
2	D15	A	500	X	-	-	-
2	D15	B	500	X	-	-	-
2	D15	C	500	X	-	-	-

2 Entry composition

There are 3 unique types of molecules in this entry. The entry contains 6810 atoms, of which 0 are hydrogens and 0 are deuteriums.

In the tables below, the ZeroOcc column contains the number of atoms modelled with zero occupancy, the AltConf column contains the number of residues with at least one atom in alternate conformation and the Trace column contains the number of residues modelled with at most 2 atoms.

- Molecule 1 is a protein called CYCLIN-DEPENDENT KINASE-LIKE 1.

Mol	Chain	Residues	Atoms					ZeroOcc	AltConf	Trace
1	A	277	Total	C	N	O	S	0	0	0
			2169	1414	373	371	11			
1	B	276	Total	C	N	O	S	0	0	0
			2133	1390	370	362	11			
1	C	278	Total	C	N	O	S	0	0	0
			2097	1366	356	364	11			

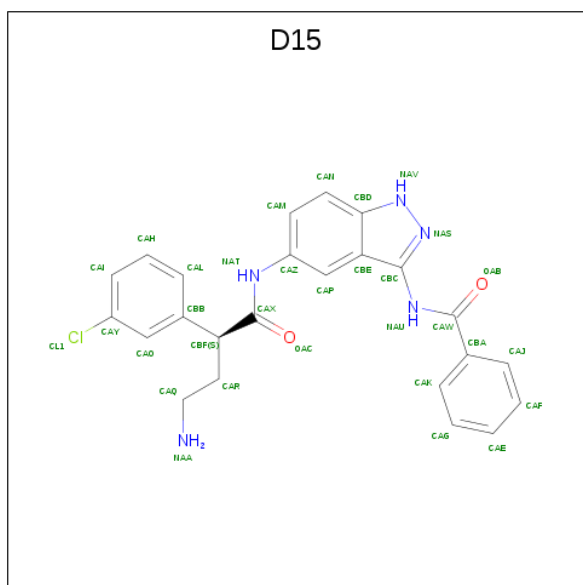
There are 45 discrepancies between the modelled and reference sequences:

Chain	Residue	Modelled	Actual	Comment	Reference
A	0	MET	-	cloning artifact	UNP Q00532
A	301	ASP	-	expression tag	UNP Q00532
A	302	LYS	-	expression tag	UNP Q00532
A	303	PRO	-	expression tag	UNP Q00532
A	304	ALA	-	expression tag	UNP Q00532
A	305	GLU	-	expression tag	UNP Q00532
A	306	ASN	-	expression tag	UNP Q00532
A	307	LEU	-	expression tag	UNP Q00532
A	308	TYR	-	expression tag	UNP Q00532
A	309	PHE	-	expression tag	UNP Q00532
A	310	GLN	-	expression tag	UNP Q00532
A	152	THR	ALA	variant	UNP Q00532
A	159	ASP	THR	engineered mutation	UNP Q00532
A	161	GLU	TYR	engineered mutation	UNP Q00532
A	274	GLU	GLN	variant	UNP Q00532
B	0	MET	-	cloning artifact	UNP Q00532
B	301	ASP	-	expression tag	UNP Q00532
B	302	LYS	-	expression tag	UNP Q00532
B	303	PRO	-	expression tag	UNP Q00532
B	304	ALA	-	expression tag	UNP Q00532
B	305	GLU	-	expression tag	UNP Q00532
B	306	ASN	-	expression tag	UNP Q00532
B	307	LEU	-	expression tag	UNP Q00532

Continued on next page...

Chain	Residue	Modelled	Actual	Comment	Reference
B	308	TYR	-	expression tag	UNP Q00532
B	309	PHE	-	expression tag	UNP Q00532
B	310	GLN	-	expression tag	UNP Q00532
B	152	THR	ALA	variant	UNP Q00532
B	159	ASP	THR	engineered mutation	UNP Q00532
B	161	GLU	TYR	engineered mutation	UNP Q00532
B	274	GLU	GLN	variant	UNP Q00532
C	0	MET	-	cloning artifact	UNP Q00532
C	301	ASP	-	expression tag	UNP Q00532
C	302	LYS	-	expression tag	UNP Q00532
C	303	PRO	-	expression tag	UNP Q00532
C	304	ALA	-	expression tag	UNP Q00532
C	305	GLU	-	expression tag	UNP Q00532
C	306	ASN	-	expression tag	UNP Q00532
C	307	LEU	-	expression tag	UNP Q00532
C	308	TYR	-	expression tag	UNP Q00532
C	309	PHE	-	expression tag	UNP Q00532
C	310	GLN	-	expression tag	UNP Q00532
C	152	THR	ALA	variant	UNP Q00532
C	159	ASP	THR	engineered mutation	UNP Q00532
C	161	GLU	TYR	engineered mutation	UNP Q00532
C	274	GLU	GLN	variant	UNP Q00532

- Molecule 2 is N-(5-[(2S)-4-amino-2-(3-chlorophenyl)butanoyl]amino)-1H-indazol-3-yl)benzamide (three-letter code: D15) (formula: $C_{24}H_{22}ClN_5O_2$).



Mol	Chain	Residues	Atoms					ZeroOcc	AltConf
2	A	1	Total	C	Cl	N	O	0	0
			32	24	1	5	2		
2	B	1	Total	C	Cl	N	O	0	0
			32	24	1	5	2		
2	C	1	Total	C	Cl	N	O	0	0
			32	24	1	5	2		

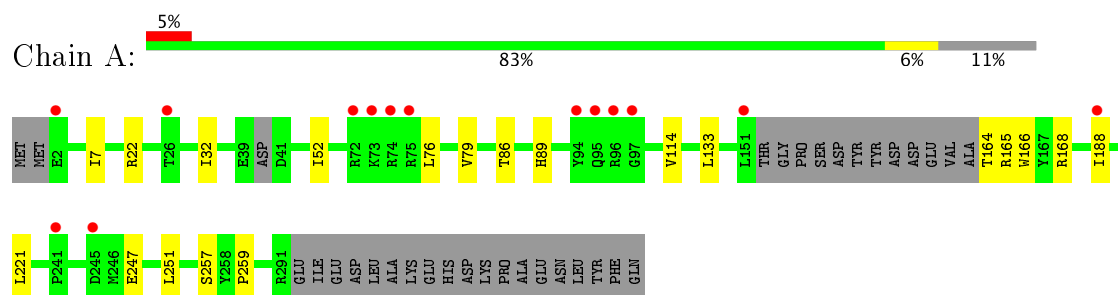
- Molecule 3 is water.

Mol	Chain	Residues	Atoms		ZeroOcc	AltConf
3	A	108	Total	O	0	0
			108	108		
3	B	106	Total	O	0	0
			106	106		
3	C	101	Total	O	0	0
			101	101		

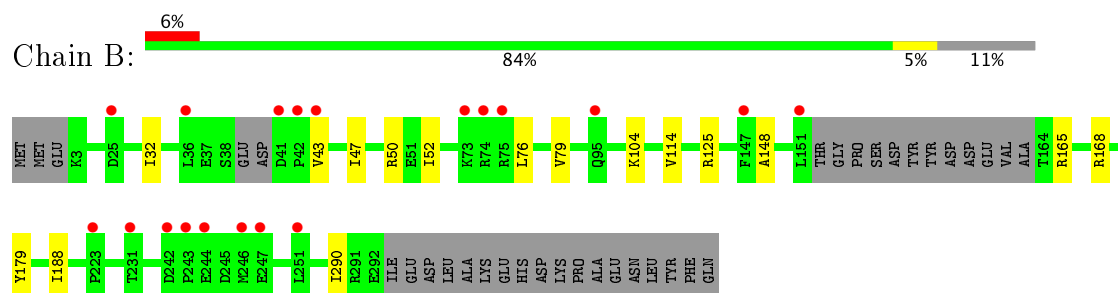
3 Residue-property plots [i](#)

These plots are drawn for all protein, RNA and DNA chains in the entry. The first graphic for a chain summarises the proportions of the various outlier classes displayed in the second graphic. The second graphic shows the sequence view annotated by issues in geometry and electron density. Residues are color-coded according to the number of geometric quality criteria for which they contain at least one outlier: green = 0, yellow = 1, orange = 2 and red = 3 or more. A red dot above a residue indicates a poor fit to the electron density ($RSRZ > 2$). Stretches of 2 or more consecutive residues without any outlier are shown as a green connector. Residues present in the sample, but not in the model, are shown in grey.

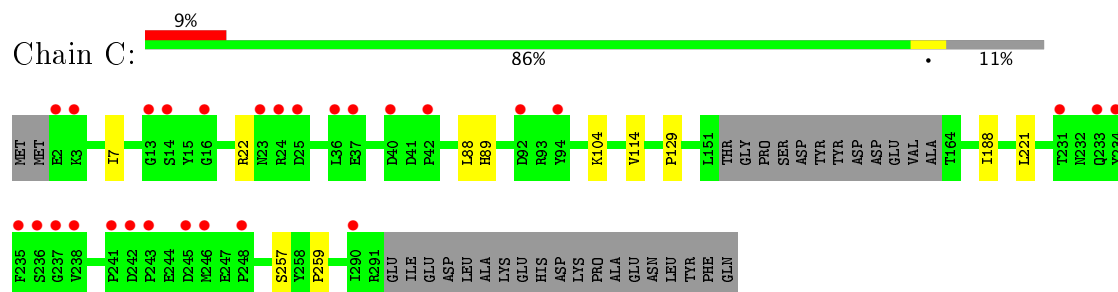
• Molecule 1: CYCLIN-DEPENDENT KINASE-LIKE 1



• Molecule 1: CYCLIN-DEPENDENT KINASE-LIKE 1



• Molecule 1: CYCLIN-DEPENDENT KINASE-LIKE 1



4 Data and refinement statistics

Property	Value	Source
Space group	P 32	Depositor
Cell constants a, b, c, α , β , γ	123.98 Å 123.98 Å 49.31 Å 90.00° 90.00° 120.00°	Depositor
Resolution (Å)	29.78 – 2.40 29.78 – 2.40	Depositor EDS
% Data completeness (in resolution range)	100.0 (29.78-2.40) 100.0 (29.78-2.40)	Depositor EDS
R_{merge}	0.11	Depositor
R_{sym}	(Not available)	Depositor
$\langle I/\sigma(I) \rangle$ ¹	2.25 (at 2.39 Å)	Xtriage
Refinement program	BUSTER 2.10.0	Depositor
R, R_{free}	0.186 , 0.226 0.188 , 0.231	Depositor DCC
R_{free} test set	1676 reflections (5.32%)	DCC
Wilson B-factor (Å ²)	45.2	Xtriage
Anisotropy	0.184	Xtriage
Bulk solvent k_{sol} (e/Å ³), B_{sol} (Å ²)	0.35 , 77.5	EDS
L-test for twinning ²	$\langle L \rangle = 0.52$, $\langle L^2 \rangle = 0.36$	Xtriage
Estimated twinning fraction	0.000 for -h,-k,l 0.046 for h,-h-k,-l 0.000 for -k,-h,-l	Xtriage
F_o, F_c correlation	0.96	EDS
Total number of atoms	6810	wwPDB-VP
Average B, all atoms (Å ²)	60.0	wwPDB-VP

Xtriage's analysis on translational NCS is as follows: *The analyses of the Patterson function reveals a significant off-origin peak that is 62.22 % of the origin peak, indicating pseudo translational symmetry. The chance of finding a peak of this or larger height randomly in a structure without pseudo translational symmetry is equal to 1.1641e-05. The detected translational NCS is most likely also responsible for the elevated intensity ratio.*

¹ Intensities estimated from amplitudes.

² Theoretical values of $\langle |L| \rangle$, $\langle L^2 \rangle$ for acentric reflections are 0.5, 0.333 respectively for untwinned datasets, and 0.375, 0.2 for perfectly twinned datasets.

5 Model quality

5.1 Standard geometry

Bond lengths and bond angles in the following residue types are not validated in this section: D15

The Z score for a bond length (or angle) is the number of standard deviations the observed value is removed from the expected value. A bond length (or angle) with $|Z| > 5$ is considered an outlier worth inspection. RMSZ is the root-mean-square of all Z scores of the bond lengths (or angles).

Mol	Chain	Bond lengths		Bond angles	
		RMSZ	# Z >5	RMSZ	# Z >5
1	A	0.51	0/2226	0.62	0/3028
1	B	0.49	0/2189	0.61	0/2979
1	C	0.49	0/2153	0.61	0/2942
All	All	0.50	0/6568	0.61	0/8949

There are no bond length outliers.

There are no bond angle outliers.

There are no chirality outliers.

There are no planarity outliers.

5.2 Too-close contacts

In the following table, the Non-H and H(model) columns list the number of non-hydrogen atoms and hydrogen atoms in the chain respectively. The H(added) column lists the number of hydrogen atoms added and optimized by MolProbity. The Clashes column lists the number of clashes within the asymmetric unit, whereas Symm-Clashes lists symmetry related clashes.

Mol	Chain	Non-H	H(model)	H(added)	Clashes	Symm-Clashes
1	A	2169	0	2113	10	0
1	B	2133	0	2058	8	0
1	C	2097	0	1968	6	0
2	A	32	0	22	1	0
2	B	32	0	22	0	0
2	C	32	0	22	2	0
3	A	108	0	0	0	0
3	B	106	0	0	0	0
3	C	101	0	0	0	0
All	All	6810	0	6205	24	0

The all-atom clashscore is defined as the number of clashes found per 1000 atoms (including hydrogen atoms). The all-atom clashscore for this structure is 2.

All (24) close contacts within the same asymmetric unit are listed below, sorted by their clash magnitude.

Atom-1	Atom-2	Interatomic distance (Å)	Clash overlap (Å)
1:A:32:ILE:HG12	1:A:79:VAL:HG22	1.80	0.63
1:A:89:HIS:CE1	2:A:500:D15:HAF	2.46	0.50
1:B:52:ILE:HD11	1:B:76:LEU:HD21	1.92	0.50
1:A:52:ILE:HD11	1:A:76:LEU:HD21	1.94	0.49
1:A:164:THR:HG22	1:A:166:TRP:H	1.78	0.49
1:A:165:ARG:HA	1:A:168:ARG:HD3	1.94	0.49
1:B:165:ARG:HA	1:B:168:ARG:HD3	1.95	0.48
1:C:89:HIS:CE1	2:C:500:D15:HAG	2.49	0.47
1:B:32:ILE:HG12	1:B:79:VAL:HG22	1.96	0.47
1:B:43:VAL:O	1:B:47:ILE:HG12	2.15	0.46
1:A:86:THR:HG22	1:A:133:LEU:HD23	1.98	0.46
1:B:50:ARG:HD2	1:B:148:ALA:O	2.16	0.45
1:B:104:LYS:HG2	1:B:290:ILE:HD12	1.97	0.45
1:A:257:SER:HB2	1:A:259:PRO:HD2	1.98	0.44
1:B:114:VAL:HG21	1:B:188:ILE:HD11	1.98	0.44
1:C:257:SER:HB2	1:C:259:PRO:HD2	1.99	0.43
1:A:114:VAL:HG21	1:A:188:ILE:HD11	2.00	0.43
1:A:247:GLU:HG3	1:A:251:LEU:HD23	2.02	0.42
1:A:7:ILE:HD11	1:A:22:ARG:HB2	2.02	0.41
1:C:7:ILE:HD11	1:C:22:ARG:HB2	2.01	0.41
1:C:88:LEU:HD13	1:C:129:PRO:HB2	2.01	0.41
1:C:114:VAL:HG21	1:C:188:ILE:HD11	2.03	0.41
1:B:125:ARG:HD3	1:B:179:TYR:CE1	2.56	0.40
1:C:89:HIS:NE2	2:C:500:D15:HAG	2.37	0.40

There are no symmetry-related clashes.

5.3 Torsion angles [i](#)

5.3.1 Protein backbone [i](#)

In the following table, the Percentiles column shows the percent Ramachandran outliers of the chain as a percentile score with respect to all X-ray entries followed by that with respect to entries of similar resolution.

The Analysed column shows the number of residues for which the backbone conformation was analysed, and the total number of residues.

Mol	Chain	Analysed	Favoured	Allowed	Outliers	Percentiles	
1	A	271/311 (87%)	265 (98%)	6 (2%)	0	100	100
1	B	270/311 (87%)	264 (98%)	6 (2%)	0	100	100
1	C	274/311 (88%)	267 (97%)	7 (3%)	0	100	100
All	All	815/933 (87%)	796 (98%)	19 (2%)	0	100	100

There are no Ramachandran outliers to report.

5.3.2 Protein sidechains ⓘ

In the following table, the Percentiles column shows the percent sidechain outliers of the chain as a percentile score with respect to all X-ray entries followed by that with respect to entries of similar resolution.

The Analysed column shows the number of residues for which the sidechain conformation was analysed, and the total number of residues.

Mol	Chain	Analysed	Rotameric	Outliers	Percentiles	
1	A	224/284 (79%)	223 (100%)	1 (0%)	93	97
1	B	215/284 (76%)	215 (100%)	0	100	100
1	C	206/284 (72%)	204 (99%)	2 (1%)	80	91
All	All	645/852 (76%)	642 (100%)	3 (0%)	91	96

All (3) residues with a non-rotameric sidechain are listed below:

Mol	Chain	Res	Type
1	A	221	LEU
1	C	104	LYS
1	C	221	LEU

Some sidechains can be flipped to improve hydrogen bonding and reduce clashes. All (3) such sidechains are listed below:

Mol	Chain	Res	Type
1	A	112	GLN
1	B	112	GLN
1	C	112	GLN

5.3.3 RNA ⓘ

There are no RNA molecules in this entry.

5.4 Non-standard residues in protein, DNA, RNA chains [i](#)

There are no non-standard protein/DNA/RNA residues in this entry.

5.5 Carbohydrates [i](#)

There are no carbohydrates in this entry.

5.6 Ligand geometry [i](#)

3 ligands are modelled in this entry.

In the following table, the Counts columns list the number of bonds (or angles) for which Mogul statistics could be retrieved, the number of bonds (or angles) that are observed in the model and the number of bonds (or angles) that are defined in the Chemical Component Dictionary. The Link column lists molecule types, if any, to which the group is linked. The Z score for a bond length (or angle) is the number of standard deviations the observed value is removed from the expected value. A bond length (or angle) with $|Z| > 2$ is considered an outlier worth inspection. RMSZ is the root-mean-square of all Z scores of the bond lengths (or angles).

Mol	Type	Chain	Res	Link	Bond lengths			Bond angles		
					Counts	RMSZ	$\# Z > 2$	Counts	RMSZ	$\# Z > 2$
2	D15	A	500	-	32,35,35	1.96	5 (15%)	34,48,48	0.72	0
2	D15	B	500	-	32,35,35	1.76	5 (15%)	34,48,48	0.93	2 (5%)
2	D15	C	500	-	32,35,35	1.96	5 (15%)	34,48,48	0.71	0

In the following table, the Chirals column lists the number of chiral outliers, the number of chiral centers analysed, the number of these observed in the model and the number defined in the Chemical Component Dictionary. Similar counts are reported in the Torsion and Rings columns. '-' means no outliers of that kind were identified.

Mol	Type	Chain	Res	Link	Chirals	Torsions	Rings
2	D15	A	500	-	1/1/3/5	0/21/23/23	0/4/4/4
2	D15	B	500	-	1/1/3/5	0/21/23/23	0/4/4/4
2	D15	C	500	-	1/1/3/5	0/21/23/23	0/4/4/4

All (15) bond length outliers are listed below:

Mol	Chain	Res	Type	Atoms	Z	Observed(Å)	Ideal(Å)
2	B	500	D15	CAZ-NAT	2.14	1.45	1.41
2	B	500	D15	CAP-CAZ	2.55	1.43	1.37
2	A	500	D15	CAP-CAZ	2.93	1.44	1.37
2	A	500	D15	CAZ-NAT	2.97	1.47	1.41

Continued on next page...

Continued from previous page...

Mol	Chain	Res	Type	Atoms	Z	Observed(Å)	Ideal(Å)
2	C	500	D15	CAP-CAZ	2.98	1.44	1.37
2	C	500	D15	CAZ-NAT	2.99	1.47	1.41
2	B	500	D15	CAW-NAU	3.15	1.44	1.35
2	C	500	D15	CAW-NAU	3.18	1.44	1.35
2	A	500	D15	CAW-NAU	3.20	1.44	1.35
2	B	500	D15	CBC-NAU	4.67	1.44	1.36
2	A	500	D15	CBC-NAU	4.96	1.45	1.36
2	C	500	D15	CBC-NAU	5.27	1.45	1.36
2	B	500	D15	CAX-NAT	6.42	1.47	1.35
2	A	500	D15	CAX-NAT	7.06	1.48	1.35
2	C	500	D15	CAX-NAT	7.20	1.48	1.35

All (2) bond angle outliers are listed below:

Mol	Chain	Res	Type	Atoms	Z	Observed(°)	Ideal(°)
2	B	500	D15	CAM-CAN-CBD	-2.07	118.30	120.84
2	B	500	D15	CAR-CBF-CBB	3.51	121.42	112.45

All (3) chirality outliers are listed below:

Mol	Chain	Res	Type	Atom
2	A	500	D15	CBF
2	B	500	D15	CBF
2	C	500	D15	CBF

There are no torsion outliers.

There are no ring outliers.

2 monomers are involved in 3 short contacts:

Mol	Chain	Res	Type	Clashes	Symm-Clashes
2	A	500	D15	1	0
2	C	500	D15	2	0

5.7 Other polymers [i](#)

There are no such residues in this entry.

5.8 Polymer linkage issues [i](#)

There are no chain breaks in this entry.

6 Fit of model and data

6.1 Protein, DNA and RNA chains

In the following table, the column labelled ‘#RSRZ> 2’ contains the number (and percentage) of RSRZ outliers, followed by percent RSRZ outliers for the chain as percentile scores relative to all X-ray entries and entries of similar resolution. The OWAB column contains the minimum, median, 95th percentile and maximum values of the occupancy-weighted average B-factor per residue. The column labelled ‘Q< 0.9’ lists the number of (and percentage) of residues with an average occupancy less than 0.9.

Mol	Chain	Analysed	<RSRZ>	#RSRZ>2	OWAB(Å ²)	Q<0.9
1	A	277/311 (89%)	0.03	14 (5%) 29 27	27, 54, 94, 123	0
1	B	276/311 (88%)	0.22	19 (6%) 18 16	33, 61, 101, 129	0
1	C	278/311 (89%)	0.25	28 (10%) 8 7	33, 61, 102, 135	0
All	All	831/933 (89%)	0.17	61 (7%) 16 14	27, 59, 100, 135	0

All (61) RSRZ outliers are listed below:

Mol	Chain	Res	Type	RSRZ
1	B	42	PRO	7.2
1	A	245	ASP	5.7
1	A	2	GLU	5.5
1	C	2	GLU	5.0
1	B	74	ARG	4.7
1	C	14	SER	4.4
1	C	237	GLY	4.3
1	A	151	LEU	4.2
1	B	36	LEU	4.2
1	B	246	MET	4.1
1	C	40	ASP	3.7
1	B	243	PRO	3.7
1	B	95	GLN	3.6
1	C	36	LEU	3.6
1	C	24	ARG	3.5
1	B	41	ASP	3.4
1	C	92	ASP	3.1
1	C	238	VAL	3.1
1	C	3	LYS	3.1
1	C	290	ILE	3.0
1	C	16	GLY	3.0
1	B	251	LEU	3.0
1	C	231	THR	2.9

Continued on next page...

Continued from previous page...

Mol	Chain	Res	Type	RSRZ
1	B	231	THR	2.9
1	B	242	ASP	2.9
1	C	243	PRO	2.9
1	B	73	LYS	2.9
1	C	236	SER	2.8
1	B	151	LEU	2.8
1	C	23	ASN	2.7
1	A	75	ARG	2.7
1	C	13	GLY	2.7
1	A	26	THR	2.7
1	A	97	GLY	2.7
1	C	233	GLN	2.6
1	A	241	PRO	2.6
1	C	234	TYR	2.6
1	B	43	VAL	2.5
1	C	245	ASP	2.5
1	C	94	TYR	2.5
1	B	223	PRO	2.5
1	C	235	PHE	2.4
1	A	74	ARG	2.4
1	B	75	ARG	2.4
1	B	244	GLU	2.4
1	B	247	GLU	2.3
1	A	95	GLN	2.3
1	B	25	ASP	2.3
1	A	96	ARG	2.2
1	C	25	ASP	2.2
1	A	188	ILE	2.2
1	B	147	PHE	2.2
1	C	241	PRO	2.2
1	C	248	PRO	2.2
1	A	72	ARG	2.1
1	C	42	PRO	2.1
1	A	73	LYS	2.1
1	C	246	MET	2.1
1	C	37	GLU	2.0
1	C	242	ASP	2.0
1	A	94	TYR	2.0

6.2 Non-standard residues in protein, DNA, RNA chains ⓘ

There are no non-standard protein/DNA/RNA residues in this entry.

6.3 Carbohydrates [i](#)

There are no carbohydrates in this entry.

6.4 Ligands [i](#)

In the following table, the Atoms column lists the number of modelled atoms in the group and the number defined in the chemical component dictionary. LLDF column lists the quality of electron density of the group with respect to its neighbouring residues in protein, DNA or RNA chains. The B-factors column lists the minimum, median, 95th percentile and maximum values of B factors of atoms in the group. The column labelled 'Q< 0.9' lists the number of atoms with occupancy less than 0.9.

Mol	Type	Chain	Res	Atoms	RSCC	RSR	LLDF	B-factors(\AA^2)	Q<0.9
2	D15	A	500	32/32	0.90	0.21	1.16	42,61,75,83	0
2	D15	B	500	32/32	0.87	0.19	0.97	53,73,91,98	0
2	D15	C	500	32/32	0.82	0.20	0.35	46,60,75,82	0

6.5 Other polymers [i](#)

There are no such residues in this entry.