



Full wwPDB X-ray Structure Validation Report ⓘ

Feb 14, 2017 – 03:03 am GMT

PDB ID : 5AIS
Title : Complex of human hematopoietic prostagandin D2 synthase (hH-PGDS) in complex with an active site inhibitor.
Authors : Edfeldt, F.; Evenas, J.; Lepisto, M.; Ward, A.; Petersen, J.; Wissler, L.; Rohman, M.; Sivars, U.; Svensson, K.; Perry, M.; Feierberg, I.; Zhou, X.; Hansson, T.; Narjes, F.
Deposited on : 2015-02-17
Resolution : 1.85 Å(reported)

This is a Full wwPDB X-ray Structure Validation Report for a publicly released PDB entry.

We welcome your comments at validation@mail.wwpdb.org

A user guide is available at

<http://wwpdb.org/validation/2016/XrayValidationReportHelp>

with specific help available everywhere you see the ⓘ symbol.

The following versions of software and data (see [references ⓘ](#)) were used in the production of this report:

MolProbity : 4.02b-467
Mogul : 1.7.2 (RC1), CSD as538be (2017)
Xtriage (Phenix) : 1.9-1692
EDS : trunk28620
Percentile statistics : 20161228.v01 (using entries in the PDB archive December 28th 2016)
Refmac : 5.8.0135
CCP4 : 6.5.0
Ideal geometry (proteins) : Engh & Huber (2001)
Ideal geometry (DNA, RNA) : Parkinson et al. (1996)
Validation Pipeline (wwPDB-VP) : recalc28949

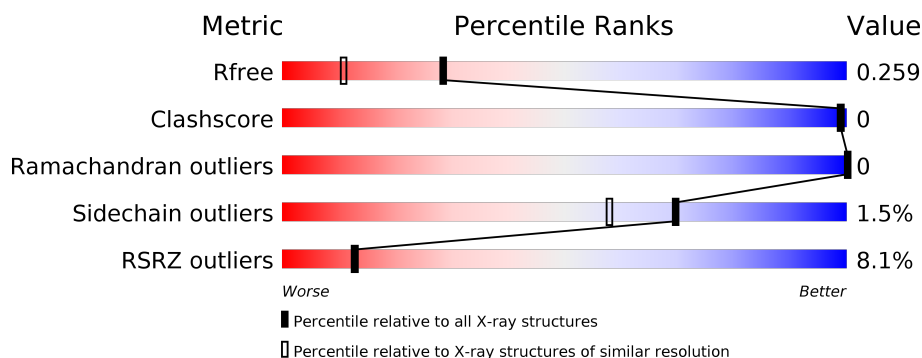
1 Overall quality at a glance

The following experimental techniques were used to determine the structure:

X-RAY DIFFRACTION

The reported resolution of this entry is 1.85 Å.

Percentile scores (ranging between 0-100) for global validation metrics of the entry are shown in the following graphic. The table shows the number of entries on which the scores are based.



Metric	Whole archive (#Entries)	Similar resolution (#Entries, resolution range(Å))
R_{free}	100719	1923 (1.86-1.86)
Clashscore	112137	2083 (1.86-1.86)
Ramachandran outliers	110173	2060 (1.86-1.86)
Sidechain outliers	110143	2060 (1.86-1.86)
RSRZ outliers	101464	1932 (1.86-1.86)

The table below summarises the geometric issues observed across the polymeric chains and their fit to the electron density. The red, orange, yellow and green segments on the lower bar indicate the fraction of residues that contain outliers for ≥ 3 , 2, 1 and 0 types of geometric quality criteria. A grey segment represents the fraction of residues that are not modelled. The numeric value for each fraction is indicated below the corresponding segment, with a dot representing fractions $\leq 5\%$. The upper red bar (where present) indicates the fraction of residues that have poor fit to the electron density. The numeric value is given above the bar.

Mol	Chain	Length	Quality of chain
1	A	199	<div> <div>7%</div> <div>96%</div> </div>
1	B	199	<div> <div>3%</div> <div>96%</div> </div>
1	C	199	<div> <div>10%</div> <div>97%</div> </div>
1	D	199	<div> <div>14%</div> <div>97%</div> </div>

2 Entry composition

There are 5 unique types of molecules in this entry. The entry contains 7069 atoms, of which 0 are hydrogens and 0 are deuteriums.

In the tables below, the ZeroOcc column contains the number of atoms modelled with zero occupancy, the AltConf column contains the number of residues with at least one atom in alternate conformation and the Trace column contains the number of residues modelled with at most 2 atoms.

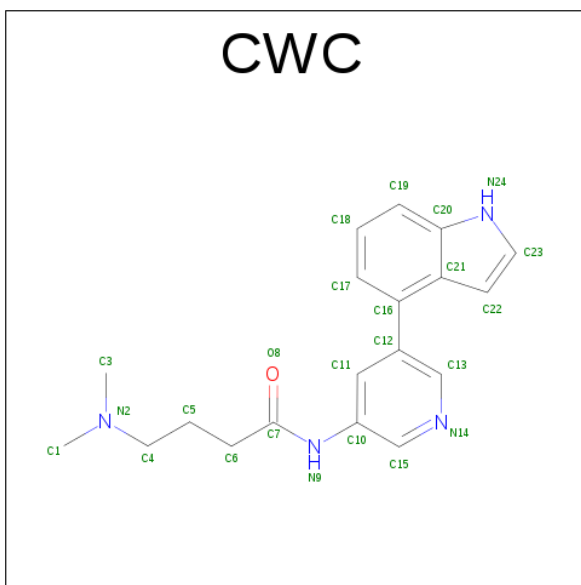
- Molecule 1 is a protein called HEMATOPOIETIC PROSTAGLANDIN D SYNTHASE.

Mol	Chain	Residues	Atoms					ZeroOcc	AltConf	Trace
1	A	198	Total	C	N	O	S	0	2	0
			1656	1067	279	302	8			
1	B	198	Total	C	N	O	S	0	2	0
			1655	1066	278	303	8			
1	C	198	Total	C	N	O	S	0	1	0
			1646	1062	275	300	9			
1	D	198	Total	C	N	O	S	0	1	0
			1646	1061	276	301	8			

There are 4 discrepancies between the modelled and reference sequences:

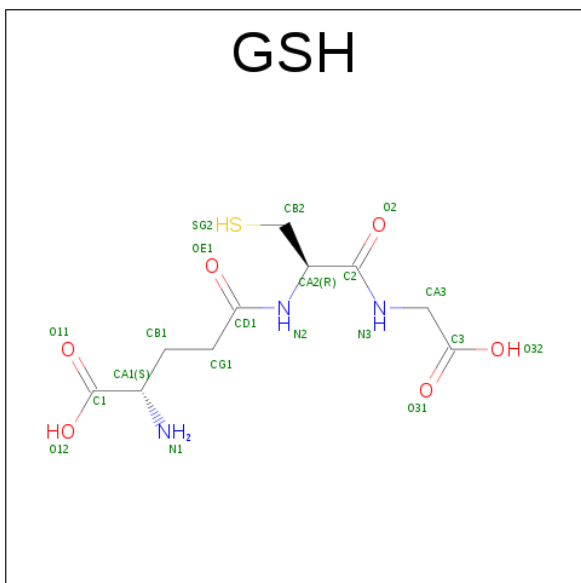
Chain	Residue	Modelled	Actual	Comment	Reference
A	1	HIS	-	EXPRESSION TAG	UNP O60760
B	1	HIS	-	EXPRESSION TAG	UNP O60760
C	1	HIS	-	EXPRESSION TAG	UNP O60760
D	1	HIS	-	EXPRESSION TAG	UNP O60760

- Molecule 2 is 4-(DIMETHYLAMINO)-N-[5-(1H-INDOL-4-YL)PYRIDIN-3-YL]BUTANAMIDE (three-letter code: CWC) (formula: C₁₉H₂₂N₄O).



Mol	Chain	Residues	Atoms				ZeroOcc	AltConf
2	A	1	Total	C	N	O	0	0
			24	19	4	1		
2	B	1	Total	C	N	O	0	0
			24	19	4	1		
2	C	1	Total	C	N	O	0	0
			24	19	4	1		
2	D	1	Total	C	N	O	0	0
			24	19	4	1		

- Molecule 3 is GLUTATHIONE (three-letter code: GSH) (formula: $C_{10}H_{17}N_3O_6S$).



Mol	Chain	Residues	Atoms					ZeroOcc	AltConf
3	A	1	Total	C	N	O	S	0	0
			20	10	3	6	1		
3	B	1	Total	C	N	O	S	0	0
			20	10	3	6	1		
3	C	1	Total	C	N	O	S	0	0
			20	10	3	6	1		
3	D	1	Total	C	N	O	S	0	0
			20	10	3	6	1		

- Molecule 4 is MAGNESIUM ION (three-letter code: MG) (formula: Mg).

Mol	Chain	Residues	Atoms		ZeroOcc	AltConf
4	B	1	Total	Mg	0	0
			1	1		
4	D	1	Total	Mg	0	0
			1	1		

- Molecule 5 is water.

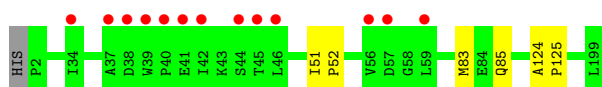
Mol	Chain	Residues	Atoms		ZeroOcc	AltConf
5	A	84	Total	O	0	0
			84	84		
5	B	80	Total	O	0	0
			80	80		
5	C	65	Total	O	0	0
			65	65		
5	D	59	Total	O	0	0
			59	59		

3 Residue-property plots [i](#)

These plots are drawn for all protein, RNA and DNA chains in the entry. The first graphic for a chain summarises the proportions of the various outlier classes displayed in the second graphic. The second graphic shows the sequence view annotated by issues in geometry and electron density. Residues are color-coded according to the number of geometric quality criteria for which they contain at least one outlier: green = 0, yellow = 1, orange = 2 and red = 3 or more. A red dot above a residue indicates a poor fit to the electron density ($RSRZ > 2$). Stretches of 2 or more consecutive residues without any outlier are shown as a green connector. Residues present in the sample, but not in the model, are shown in grey.

- Molecule 1: HEMATOPOIETIC PROSTAGLANDIN D SYNTHASE

Chain A: 7% 96%



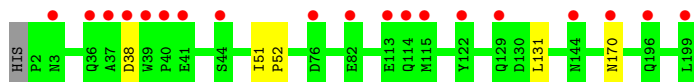
- Molecule 1: HEMATOPOIETIC PROSTAGLANDIN D SYNTHASE

Chain B: 3% 96%



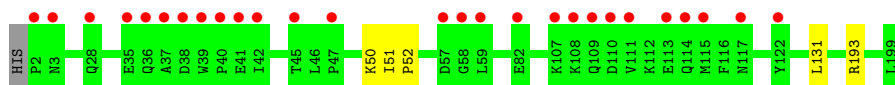
- Molecule 1: HEMATOPOIETIC PROSTAGLANDIN D SYNTHASE

Chain C: 10% 97%



- Molecule 1: HEMATOPOIETIC PROSTAGLANDIN D SYNTHASE

Chain D: 14% 97%



4 Data and refinement statistics

Property	Value	Source
Space group	I 41	Depositor
Cell constants a, b, c, α , β , γ	124.80Å 124.80Å 106.88Å 90.00° 90.00° 90.00°	Depositor
Resolution (Å)	49.47 – 1.85 49.47 – 1.85	Depositor EDS
% Data completeness (in resolution range)	97.4 (49.47-1.85) 97.4 (49.47-1.85)	Depositor EDS
R_{merge}	0.19	Depositor
R_{sym}	(Not available)	Depositor
$\langle I/\sigma(I) \rangle$ ¹	2.31 (at 1.86Å)	Xtriage
Refinement program	REFMAC 5.7.0027	Depositor
R, R_{free}	0.231 , 0.255 0.236 , 0.259	Depositor DCC
R_{free} test set	3439 reflections (5.33%)	DCC
Wilson B-factor (Å ²)	18.6	Xtriage
Anisotropy	0.055	Xtriage
Bulk solvent k_{sol} (e/Å ³), B_{sol} (Å ²)	0.41 , 39.8	EDS
L-test for twinning ²	$\langle L \rangle = 0.48$, $\langle L^2 \rangle = 0.31$	Xtriage
Estimated twinning fraction	0.032 for -k,-h,-l	Xtriage
F_o, F_c correlation	0.92	EDS
Total number of atoms	7069	wwPDB-VP
Average B, all atoms (Å ²)	22.0	wwPDB-VP

Xtriage's analysis on translational NCS is as follows: *The largest off-origin peak in the Patterson function is 3.34% of the height of the origin peak. No significant pseudotranslation is detected.*

¹Intensities estimated from amplitudes.

²Theoretical values of $\langle |L| \rangle$, $\langle L^2 \rangle$ for acentric reflections are 0.5, 0.333 respectively for untwinned datasets, and 0.375, 0.2 for perfectly twinned datasets.

5 Model quality [i](#)

5.1 Standard geometry [i](#)

Bond lengths and bond angles in the following residue types are not validated in this section: GSH, CWC, MG

The Z score for a bond length (or angle) is the number of standard deviations the observed value is removed from the expected value. A bond length (or angle) with $|Z| > 5$ is considered an outlier worth inspection. RMSZ is the root-mean-square of all Z scores of the bond lengths (or angles).

Mol	Chain	Bond lengths		Bond angles	
		RMSZ	$\# Z > 5$	RMSZ	$\# Z > 5$
1	A	0.26	0/1700	0.44	0/2310
1	B	0.26	0/1698	0.45	0/2307
1	C	0.26	0/1689	0.43	0/2294
1	D	0.26	0/1689	0.45	0/2295
All	All	0.26	0/6776	0.44	0/9206

There are no bond length outliers.

There are no bond angle outliers.

There are no chirality outliers.

There are no planarity outliers.

5.2 Too-close contacts [i](#)

In the following table, the Non-H and H(model) columns list the number of non-hydrogen atoms and hydrogen atoms in the chain respectively. The H(added) column lists the number of hydrogen atoms added and optimized by MolProbity. The Clashes column lists the number of clashes within the asymmetric unit, whereas Symm-Clashes lists symmetry related clashes.

Mol	Chain	Non-H	H(model)	H(added)	Clashes	Symm-Clashes
1	A	1656	0	1630	4	0
1	B	1655	0	1631	2	0
1	C	1646	0	1627	1	0
1	D	1646	0	1624	1	0
2	A	24	0	22	0	0
2	B	24	0	22	0	0
2	C	24	0	22	0	0
2	D	24	0	22	0	0
3	A	20	0	15	0	0

Continued on next page...

Continued from previous page...

Mol	Chain	Non-H	H(model)	H(added)	Clashes	Symm-Clashes
3	B	20	0	15	0	0
3	C	20	0	15	0	0
3	D	20	0	15	0	0
4	B	1	0	0	0	0
4	D	1	0	0	0	0
5	A	84	0	0	0	0
5	B	80	0	0	0	0
5	C	65	0	0	0	0
5	D	59	0	0	0	0
All	All	7069	0	6660	6	0

The all-atom clashscore is defined as the number of clashes found per 1000 atoms (including hydrogen atoms). The all-atom clashscore for this structure is 0.

All (6) close contacts within the same asymmetric unit are listed below, sorted by their clash magnitude.

Atom-1	Atom-2	Interatomic distance (Å)	Clash overlap (Å)
1:A:124:ALA:HB3	1:A:125:PRO:HD3	1.86	0.57
1:A:85:GLN:OE1	1:B:73:LYS:HE2	2.09	0.52
1:A:83:MET:SD	1:B:61:LEU:HD21	2.56	0.45
1:D:51:ILE:HB	1:D:52:PRO:HA	2.00	0.42
1:C:51:ILE:HB	1:C:52:PRO:HA	2.01	0.41
1:A:51:ILE:HB	1:A:52:PRO:HA	2.03	0.40

There are no symmetry-related clashes.

5.3 Torsion angles [i](#)

5.3.1 Protein backbone [i](#)

In the following table, the Percentiles column shows the percent Ramachandran outliers of the chain as a percentile score with respect to all X-ray entries followed by that with respect to entries of similar resolution.

The Analysed column shows the number of residues for which the backbone conformation was analysed, and the total number of residues.

Mol	Chain	Analysed	Favoured	Allowed	Outliers	Percentiles	
1	A	198/199 (100%)	195 (98%)	3 (2%)	0	100	100
1	B	198/199 (100%)	196 (99%)	2 (1%)	0	100	100

Continued on next page...

Continued from previous page...

Mol	Chain	Analysed	Favoured	Allowed	Outliers	Percentiles	
1	C	197/199 (99%)	195 (99%)	2 (1%)	0	100	100
1	D	197/199 (99%)	195 (99%)	2 (1%)	0	100	100
All	All	790/796 (99%)	781 (99%)	9 (1%)	0	100	100

There are no Ramachandran outliers to report.

5.3.2 Protein sidechains [i](#)

In the following table, the Percentiles column shows the percent sidechain outliers of the chain as a percentile score with respect to all X-ray entries followed by that with respect to entries of similar resolution.

The Analysed column shows the number of residues for which the sidechain conformation was analysed, and the total number of residues.

Mol	Chain	Analysed	Rotameric	Outliers	Percentiles	
1	A	180/179 (101%)	180 (100%)	0	100	100
1	B	180/179 (101%)	175 (97%)	5 (3%)	49	31
1	C	179/179 (100%)	176 (98%)	3 (2%)	66	52
1	D	179/179 (100%)	176 (98%)	3 (2%)	66	52
All	All	718/716 (100%)	707 (98%)	11 (2%)	70	58

All (11) residues with a non-rotameric sidechain are listed below:

Mol	Chain	Res	Type
1	B	35	GLU
1	B	38	ASP
1	B	50	LYS
1	B	115	MET
1	B	193	ARG
1	C	38	ASP
1	C	131	LEU
1	C	170	ASN
1	D	50	LYS
1	D	131	LEU
1	D	193	ARG

Some sidechains can be flipped to improve hydrogen bonding and reduce clashes. All (3) such sidechains are listed below:

Mol	Chain	Res	Type
1	A	129	GLN
1	C	109	GLN
1	C	189	ASN

5.3.3 RNA [i](#)

There are no RNA molecules in this entry.

5.4 Non-standard residues in protein, DNA, RNA chains [i](#)

There are no non-standard protein/DNA/RNA residues in this entry.

5.5 Carbohydrates [i](#)

There are no carbohydrates in this entry.

5.6 Ligand geometry [i](#)

Of 10 ligands modelled in this entry, 2 are monoatomic - leaving 8 for Mogul analysis.

In the following table, the Counts columns list the number of bonds (or angles) for which Mogul statistics could be retrieved, the number of bonds (or angles) that are observed in the model and the number of bonds (or angles) that are defined in the chemical component dictionary. The Link column lists molecule types, if any, to which the group is linked. The Z score for a bond length (or angle) is the number of standard deviations the observed value is removed from the expected value. A bond length (or angle) with $|Z| > 2$ is considered an outlier worth inspection. RMSZ is the root-mean-square of all Z scores of the bond lengths (or angles).

Mol	Type	Chain	Res	Link	Bond lengths			Bond angles		
					Counts	RMSZ	# $ Z > 2$	Counts	RMSZ	# $ Z > 2$
2	CWC	A	1200	-	24,26,26	0.96	2 (8%)	30,35,35	1.33	2 (6%)
3	GSH	A	1201	-	11,19,19	0.32	0	14,24,24	0.62	0
2	CWC	B	1200	-	24,26,26	0.93	2 (8%)	30,35,35	1.29	3 (10%)
3	GSH	B	1202	-	11,19,19	0.29	0	14,24,24	0.60	0
2	CWC	C	1200	-	24,26,26	0.93	2 (8%)	30,35,35	1.33	2 (6%)
3	GSH	C	1201	-	11,19,19	0.33	0	14,24,24	0.62	0
2	CWC	D	1200	-	24,26,26	0.95	2 (8%)	30,35,35	1.29	3 (10%)
3	GSH	D	1202	-	11,19,19	0.32	0	14,24,24	0.80	0

In the following table, the Chirals column lists the number of chiral outliers, the number of chiral centers analysed, the number of these observed in the model and the number defined in the chemical

component dictionary. Similar counts are reported in the Torsion and Rings columns. '-' means no outliers of that kind were identified.

Mol	Type	Chain	Res	Link	Chirals	Torsions	Rings
2	CWC	A	1200	-	-	0/14/14/14	0/3/3/3
3	GSH	A	1201	-	-	0/18/24/24	0/0/0/0
2	CWC	B	1200	-	-	0/14/14/14	0/3/3/3
3	GSH	B	1202	-	-	0/18/24/24	0/0/0/0
2	CWC	C	1200	-	-	0/14/14/14	0/3/3/3
3	GSH	C	1201	-	-	0/18/24/24	0/0/0/0
2	CWC	D	1200	-	-	0/14/14/14	0/3/3/3
3	GSH	D	1202	-	-	0/18/24/24	0/0/0/0

All (8) bond length outliers are listed below:

Mol	Chain	Res	Type	Atoms	Z	Observed(Å)	Ideal(Å)
2	A	1200	CWC	C16-C12	-2.68	1.44	1.49
2	D	1200	CWC	C16-C12	-2.65	1.44	1.49
2	C	1200	CWC	C16-C12	-2.54	1.45	1.49
2	B	1200	CWC	C16-C12	-2.52	1.45	1.49
2	B	1200	CWC	C19-C20	-2.27	1.37	1.41
2	D	1200	CWC	C19-C20	-2.25	1.37	1.41
2	A	1200	CWC	C19-C20	-2.22	1.38	1.41
2	C	1200	CWC	C19-C20	-2.20	1.38	1.41

All (10) bond angle outliers are listed below:

Mol	Chain	Res	Type	Atoms	Z	Observed(°)	Ideal(°)
2	B	1200	CWC	C18-C19-C20	-3.56	114.71	120.07
2	C	1200	CWC	C18-C19-C20	-3.53	114.75	120.07
2	A	1200	CWC	C18-C19-C20	-3.50	114.81	120.07
2	D	1200	CWC	C18-C19-C20	-3.40	114.95	120.07
2	C	1200	CWC	C6-C7-N9	-2.87	109.39	114.53
2	A	1200	CWC	C6-C7-N9	-2.71	109.69	114.53
2	D	1200	CWC	C10-N9-C7	-2.35	123.29	127.49
2	B	1200	CWC	C6-C7-N9	-2.25	110.50	114.53
2	B	1200	CWC	C10-N9-C7	-2.06	123.80	127.49
2	D	1200	CWC	C6-C7-N9	-2.05	110.88	114.53

There are no chirality outliers.

There are no torsion outliers.

There are no ring outliers.

No monomer is involved in short contacts.

5.7 Other polymers [i](#)

There are no such residues in this entry.

5.8 Polymer linkage issues [i](#)

There are no chain breaks in this entry.

6 Fit of model and data

6.1 Protein, DNA and RNA chains

In the following table, the column labelled ‘#RSRZ> 2’ contains the number (and percentage) of RSRZ outliers, followed by percent RSRZ outliers for the chain as percentile scores relative to all X-ray entries and entries of similar resolution. The OWAB column contains the minimum, median, 95th percentile and maximum values of the occupancy-weighted average B-factor per residue. The column labelled ‘Q< 0.9’ lists the number of (and percentage) of residues with an average occupancy less than 0.9.

Mol	Chain	Analysed	<RSRZ>	#RSRZ>2	OWAB(Å ²)	Q<0.9
1	A	198/199 (99%)	0.63	13 (6%) 19 18	12, 18, 39, 50	0
1	B	198/199 (99%)	0.46	5 (2%) 58 56	11, 19, 29, 31	0
1	C	198/199 (99%)	0.67	19 (9%) 9 8	14, 25, 35, 49	0
1	D	198/199 (99%)	0.75	27 (13%) 3 3	12, 19, 50, 58	0
All	All	792/796 (99%)	0.63	64 (8%) 13 13	11, 20, 39, 58	0

All (64) RSRZ outliers are listed below:

Mol	Chain	Res	Type	RSRZ
1	A	42	ILE	6.2
1	D	110	ASP	6.0
1	D	107	LYS	6.0
1	D	36	GLN	5.9
1	A	38	ASP	5.8
1	D	37	ALA	4.8
1	D	113	GLU	4.6
1	C	41	GLU	4.5
1	A	59	LEU	4.5
1	A	41	GLU	4.5
1	C	122	TYR	4.5
1	A	44	SER	4.3
1	D	122	TYR	4.2
1	D	111	VAL	4.2
1	C	38	ASP	4.2
1	B	59	LEU	4.1
1	A	39	TRP	3.9
1	D	115	MET	3.8
1	D	39	TRP	3.8
1	D	42	ILE	3.6
1	D	40	PRO	3.6

Continued on next page...

Continued from previous page...

Mol	Chain	Res	Type	RSRZ
1	C	114	GLN	3.5
1	D	28	GLN	3.5
1	D	117	ASN	3.4
1	D	41	GLU	3.3
1	B	115	MET	3.3
1	A	40	PRO	3.3
1	C	3	ASN	3.3
1	D	38	ASP	3.3
1	A	45	THR	3.2
1	A	57	ASP	3.2
1	C	44	SER	3.1
1	D	109	GLN	3.0
1	C	76	ASP	2.9
1	C	39	TRP	2.9
1	D	35	GLU	2.9
1	C	36	GLN	2.9
1	D	57	ASP	2.9
1	C	37	ALA	2.9
1	C	199	LEU	2.8
1	D	108	LYS	2.8
1	C	170	ASN	2.8
1	C	113	GLU	2.7
1	B	139	GLU	2.7
1	B	110	ASP	2.6
1	C	144	ASN	2.6
1	A	37	ALA	2.6
1	C	82	GLU	2.5
1	D	58	GLY	2.4
1	D	59	LEU	2.4
1	D	114	GLN	2.4
1	C	40	PRO	2.4
1	D	82	GLU	2.3
1	D	47	PRO	2.3
1	D	45	THR	2.2
1	A	46	LEU	2.2
1	D	3	ASN	2.1
1	A	34	ILE	2.1
1	A	56	VAL	2.1
1	B	83	MET	2.1
1	C	196	GLN	2.1
1	C	129	GLN	2.1
1	C	115[A]	MET	2.0

Continued on next page...

Continued from previous page...

Mol	Chain	Res	Type	RSRZ
1	D	2	PRO	2.0

6.2 Non-standard residues in protein, DNA, RNA chains [i](#)

There are no non-standard protein/DNA/RNA residues in this entry.

6.3 Carbohydrates [i](#)

There are no carbohydrates in this entry.

6.4 Ligands [i](#)

In the following table, the Atoms column lists the number of modelled atoms in the group and the number defined in the chemical component dictionary. LLDF column lists the quality of electron density of the group with respect to its neighbouring residues in protein, DNA or RNA chains. The B-factors column lists the minimum, median, 95th percentile and maximum values of B factors of atoms in the group. The column labelled 'Q< 0.9' lists the number of atoms with occupancy less than 0.9.

Mol	Type	Chain	Res	Atoms	RSCC	RSR	LLDF	B-factors(Å ²)	Q<0.9
3	GSH	D	1202	20/20	0.88	0.16	0.60	18,20,24,24	0
2	CWC	B	1200	24/24	0.88	0.14	0.44	15,15,20,21	0
4	MG	B	1201	1/1	0.95	0.15	0.26	25,25,25,25	0
3	GSH	C	1201	20/20	0.87	0.14	0.21	19,20,24,24	0
2	CWC	C	1200	24/24	0.88	0.14	-0.04	19,21,26,26	0
3	GSH	A	1201	20/20	0.86	0.15	-0.05	20,23,29,30	0
2	CWC	A	1200	24/24	0.92	0.12	-0.13	19,20,26,26	0
2	CWC	D	1200	24/24	0.90	0.12	-0.24	17,19,25,25	0
3	GSH	B	1202	20/20	0.92	0.11	-0.86	15,16,18,18	0
4	MG	D	1201	1/1	0.96	0.11	-1.13	24,24,24,24	0

6.5 Other polymers [i](#)

There are no such residues in this entry.