



wwPDB X-ray Structure Validation Summary Report ⓘ

Feb 14, 2017 – 10:39 pm GMT

PDB ID : 3AKL
Title : Crystal structure of A Helicobacter pylori proinflammatory kinase CtkA
Authors : Kim, D.J.; Suh, S.W.
Deposited on : 2010-07-14
Resolution : 2.90 Å(reported)

This is a wwPDB X-ray Structure Validation Summary Report for a publicly released PDB entry.

We welcome your comments at validation@mail.wwpdb.org

A user guide is available at

<http://wwpdb.org/validation/2016/XrayValidationReportHelp>

with specific help available everywhere you see the ⓘ symbol.

The following versions of software and data (see [references ⓘ](#)) were used in the production of this report:

MolProbity	:	4.02b-467
Mogul	:	1.7.2 (RC1), CSD as538be (2017)
Xtriage (Phenix)	:	1.9-1692
EDS	:	trunk28620
Percentile statistics	:	20161228.v01 (using entries in the PDB archive December 28th 2016)
Refmac	:	5.8.0135
CCP4	:	6.5.0
Ideal geometry (proteins)	:	Engh & Huber (2001)
Ideal geometry (DNA, RNA)	:	Parkinson et al. (1996)
Validation Pipeline (wwPDB-VP)	:	recalc28949

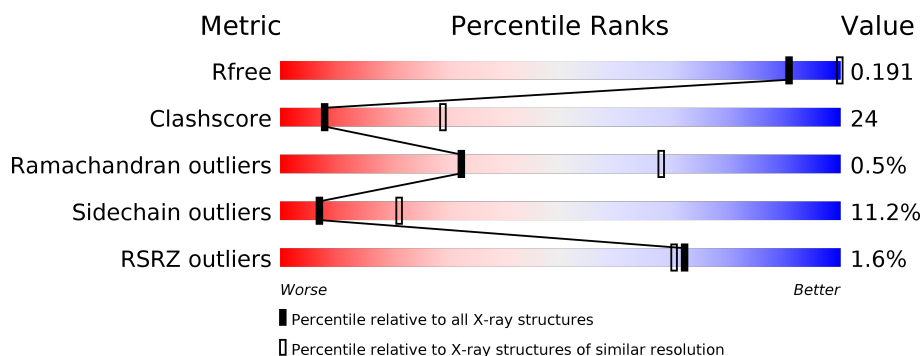
1 Overall quality at a glance

The following experimental techniques were used to determine the structure:

X-RAY DIFFRACTION

The reported resolution of this entry is 2.90 Å.

Percentile scores (ranging between 0-100) for global validation metrics of the entry are shown in the following graphic. The table shows the number of entries on which the scores are based.



Metric	Whole archive (#Entries)	Similar resolution (#Entries, resolution range(Å))
R_{free}	100719	1586 (2.90-2.90)
Clashscore	112137	1807 (2.90-2.90)
Ramachandran outliers	110173	1768 (2.90-2.90)
Sidechain outliers	110143	1770 (2.90-2.90)
RSRZ outliers	101464	1596 (2.90-2.90)

The table below summarises the geometric issues observed across the polymeric chains and their fit to the electron density. The red, orange, yellow and green segments on the lower bar indicate the fraction of residues that contain outliers for ≥ 3 , 2, 1 and 0 types of geometric quality criteria. A grey segment represents the fraction of residues that are not modelled. The numeric value for each fraction is indicated below the corresponding segment, with a dot representing fractions $\leq 5\%$. The upper red bar (where present) indicates the fraction of residues that have poor fit to the electron density. The numeric value is given above the bar.

Mol	Chain	Length	Quality of chain
1	A	325	<div> <div style="width: 100%; height: 10px; background: linear-gradient(to right, red 0%, red 1%, green 1%, green 53%, yellow 53%, yellow 79%, orange 79%, orange 84%, grey 84%, grey 100%);"></div> <div style="display: flex; justify-content: space-between; width: 100%;"> % 53% 29% 5% 14% </div> </div>
1	B	325	<div> <div style="width: 100%; height: 10px; background: linear-gradient(to right, green 0%, green 57%, yellow 57%, yellow 83%, orange 83%, orange 87%, grey 87%, grey 100%);"></div> <div style="display: flex; justify-content: space-between; width: 100%;"> 57% 26% • 14% </div> </div>
1	C	325	<div> <div style="width: 100%; height: 10px; background: linear-gradient(to right, red 0%, red 3%, green 3%, green 33%, yellow 33%, yellow 81%, orange 81%, orange 89%, grey 89%, grey 100%);"></div> <div style="display: flex; justify-content: space-between; width: 100%;"> 3% 33% 45% 8% 14% </div> </div>
1	D	325	<div> <div style="width: 100%; height: 10px; background: linear-gradient(to right, red 0%, red 1%, green 1%, green 46%, yellow 46%, yellow 80%, orange 80%, orange 86%, grey 86%, grey 100%);"></div> <div style="display: flex; justify-content: space-between; width: 100%;"> % 46% 34% 6% 14% </div> </div>

The following table lists non-polymeric compounds, carbohydrate monomers and non-standard residues in protein, DNA, RNA chains that are outliers for geometric or electron-density-fit crite-

ria:

Mol	Type	Chain	Res	Chirality	Geometry	Clashes	Electron density
3	MG	B	404	-	-	-	X

2 Entry composition [i](#)

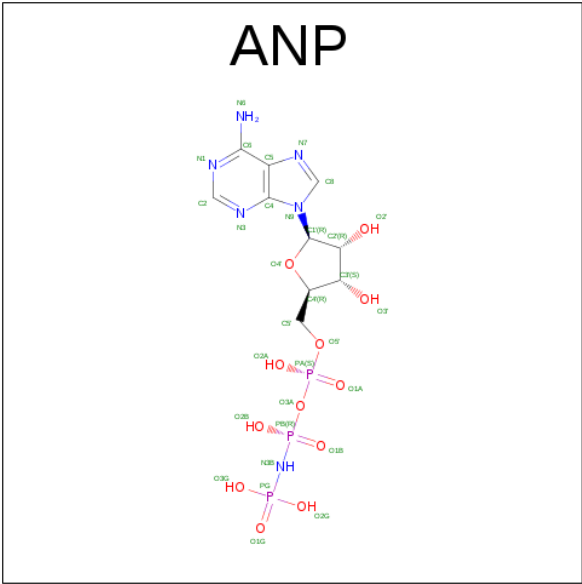
There are 5 unique types of molecules in this entry. The entry contains 9276 atoms, of which 0 are hydrogens and 0 are deuteriums.

In the tables below, the ZeroOcc column contains the number of atoms modelled with zero occupancy, the AltConf column contains the number of residues with at least one atom in alternate conformation and the Trace column contains the number of residues modelled with at most 2 atoms.

- Molecule 1 is a protein called CtkA.

Mol	Chain	Residues	Atoms					ZeroOcc	AltConf	Trace
			Total	C	N	O	S			
1	A	281	Total 2282	1467	375	425	15	0	0	0
1	B	281	Total 2282	1467	375	425	15	0	0	0
1	C	279	Total 2263	1456	370	422	15	0	0	0
1	D	279	Total 2263	1456	370	422	15	0	0	0

- Molecule 2 is PHOSPHOAMINOPHOSPHONIC ACID-ADENYLATE ESTER (three-letter code: ANP) (formula: C₁₀H₁₇N₆O₁₂P₃).



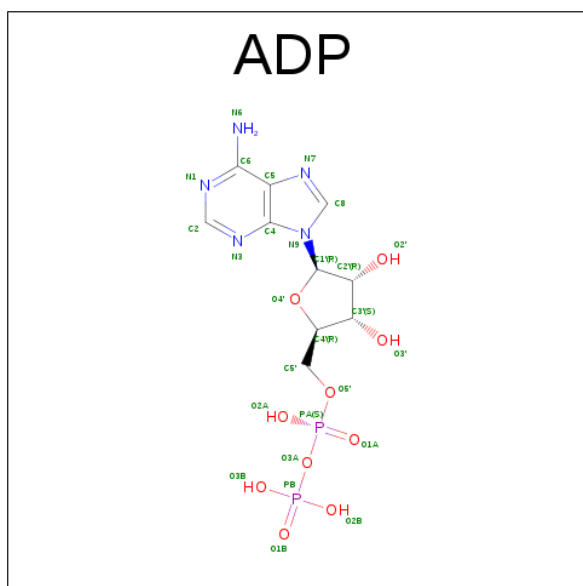
Continued from previous page...

Mol	Chain	Residues	Atoms					ZeroOcc	AltConf
2	D	1	Total	C	N	O	P	0	0
			31	10	6	12	3		

- Molecule 3 is MAGNESIUM ION (three-letter code: MG) (formula: Mg).

Mol	Chain	Residues	Atoms		ZeroOcc	AltConf
3	B	2	Total	Mg	0	0
			2	2		
3	A	2	Total	Mg	0	0
			2	2		
3	D	2	Total	Mg	0	0
			2	2		
3	C	1	Total	Mg	0	0
			1	1		

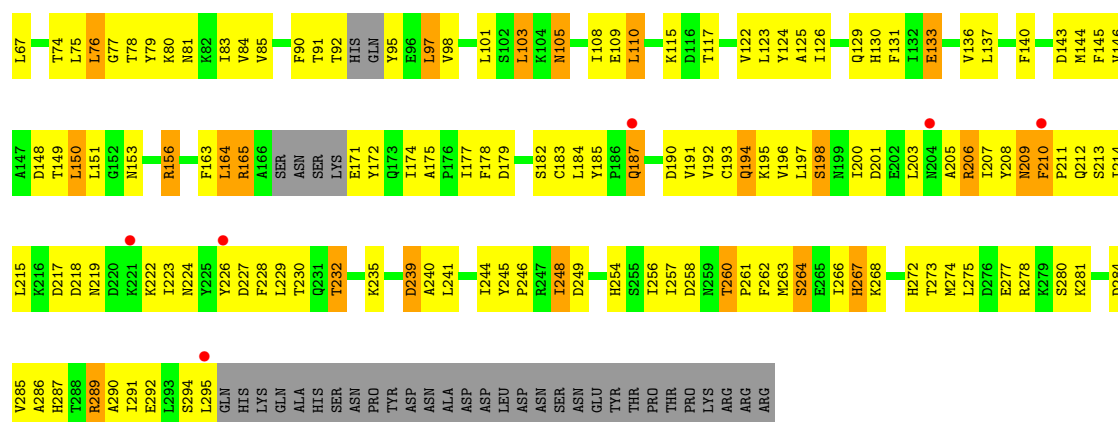
- Molecule 4 is ADENOSINE-5'-DIPHOSPHATE (three-letter code: ADP) (formula: $C_{10}H_{15}N_5O_{10}P_2$).



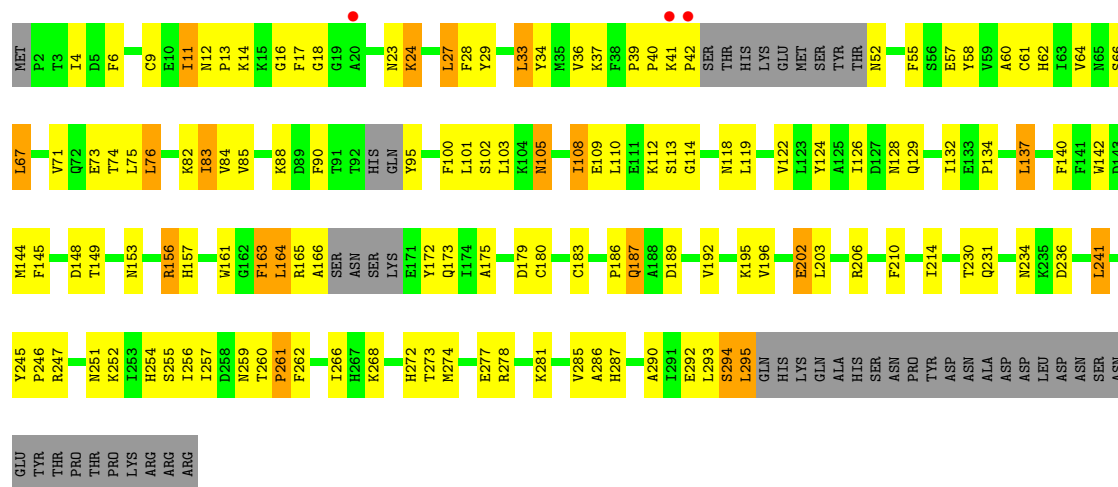
Mol	Chain	Residues	Atoms					ZeroOcc	AltConf
4	C	1	Total	C	N	O	P	0	0
			27	10	5	10	2		

- Molecule 5 is water.

Mol	Chain	Residues	Atoms		ZeroOcc	AltConf
5	A	13	Total 13	O 13	0	0
5	B	16	Total 16	O 16	0	0
5	C	10	Total 10	O 10	0	0
5	D	20	Total 20	O 20	0	0



• Molecule 1: Ctka



4 Data and refinement statistics

Property	Value	Source
Space group	P 1	Depositor
Cell constants a, b, c, α , β , γ	60.13Å 74.83Å 75.81Å 78.84° 71.36° 85.44°	Depositor
Resolution (Å)	19.94 – 2.90 19.94 – 2.90	Depositor EDS
% Data completeness (in resolution range)	93.7 (19.94-2.90) 93.0 (19.94-2.90)	Depositor EDS
R_{merge}	0.14	Depositor
R_{sym}	(Not available)	Depositor
$\langle I/\sigma(I) \rangle$ ¹	3.41 (at 2.88Å)	Xtriage
Refinement program	PHENIX (phenix.refine: 1.5_2)	Depositor
R, R_{free}	0.189 , 0.280 0.182 , 0.191	Depositor DCC
R_{free} test set	2679 reflections (10.02%)	DCC
Wilson B-factor (Å ²)	57.0	Xtriage
Anisotropy	0.208	Xtriage
Bulk solvent k_{sol} (e/Å ³), B_{sol} (Å ²)	0.27 , 25.5	EDS
L-test for twinning ²	$\langle L \rangle = 0.51$, $\langle L^2 \rangle = 0.34$	Xtriage
Estimated twinning fraction	No twinning to report.	Xtriage
F_o, F_c correlation	0.94	EDS
Total number of atoms	9276	wwPDB-VP
Average B, all atoms (Å ²)	62.0	wwPDB-VP

Xtriage's analysis on translational NCS is as follows: *The largest off-origin peak in the Patterson function is 5.84% of the height of the origin peak. No significant pseudotranslation is detected.*

¹Intensities estimated from amplitudes.

²Theoretical values of $\langle |L| \rangle$, $\langle L^2 \rangle$ for acentric reflections are 0.5, 0.333 respectively for untwinned datasets, and 0.375, 0.2 for perfectly twinned datasets.

5 Model quality [i](#)

5.1 Standard geometry [i](#)

Bond lengths and bond angles in the following residue types are not validated in this section: MG, ANP, ADP

The Z score for a bond length (or angle) is the number of standard deviations the observed value is removed from the expected value. A bond length (or angle) with $|Z| > 5$ is considered an outlier worth inspection. RMSZ is the root-mean-square of all Z scores of the bond lengths (or angles).

Mol	Chain	Bond lengths		Bond angles	
		RMSZ	$\# Z > 5$	RMSZ	$\# Z > 5$
1	A	0.73	0/2333	0.73	1/3153 (0.0%)
1	B	0.51	0/2333	0.63	0/3153
1	C	0.48	0/2312	0.62	0/3123
1	D	0.56	0/2312	0.65	1/3123 (0.0%)
All	All	0.58	0/9290	0.66	2/12552 (0.0%)

There are no bond length outliers.

All (2) bond angle outliers are listed below:

Mol	Chain	Res	Type	Atoms	Z	Observed(°)	Ideal(°)
1	D	261	PRO	N-CA-C	6.05	127.82	112.10
1	A	219	ASN	N-CA-C	-5.27	96.76	111.00

There are no chirality outliers.

There are no planarity outliers.

5.2 Too-close contacts [i](#)

In the following table, the Non-H and H(model) columns list the number of non-hydrogen atoms and hydrogen atoms in the chain respectively. The H(added) column lists the number of hydrogen atoms added and optimized by MolProbity. The Clashes column lists the number of clashes within the asymmetric unit, whereas Symm-Clashes lists symmetry related clashes.

Mol	Chain	Non-H	H(model)	H(added)	Clashes	Symm-Clashes
1	A	2282	0	2242	96	0
1	B	2282	0	2244	76	0
1	C	2263	0	2228	167	0
1	D	2263	0	2228	109	0
2	A	31	0	13	4	0

Continued on next page...

Continued from previous page...

Mol	Chain	Non-H	H(model)	H(added)	Clashes	Symm-Clashes
2	B	31	0	13	3	0
2	D	31	0	13	2	0
3	A	2	0	0	0	0
3	B	2	0	0	0	0
3	C	1	0	0	0	0
3	D	2	0	0	0	0
4	C	27	0	12	5	0
5	A	13	0	0	0	0
5	B	16	0	0	1	0
5	C	10	0	0	3	0
5	D	20	0	0	2	0
All	All	9276	0	8993	435	0

The all-atom clashscore is defined as the number of clashes found per 1000 atoms (including hydrogen atoms). The all-atom clashscore for this structure is 24.

The worst 5 of 435 close contacts within the same asymmetric unit are listed below, sorted by their clash magnitude.

Atom-1	Atom-2	Interatomic distance (Å)	Clash overlap (Å)
1:C:208:TYR:C	1:C:209:ASN:HD22	1.38	1.24
1:C:208:TYR:C	1:C:209:ASN:ND2	1.97	1.15
4:C:500:ADP:H8	4:C:500:ADP:H5'2	1.09	1.11
1:C:210:PHE:HB2	1:C:211:PRO:HD3	1.23	1.10
1:D:40:PRO:C	1:D:42:PRO:HD2	1.72	1.09

There are no symmetry-related clashes.

5.3 Torsion angles [i](#)

5.3.1 Protein backbone [i](#)

In the following table, the Percentiles column shows the percent Ramachandran outliers of the chain as a percentile score with respect to all X-ray entries followed by that with respect to entries of similar resolution.

The Analysed column shows the number of residues for which the backbone conformation was analysed, and the total number of residues.

Mol	Chain	Analysed	Favoured	Allowed	Outliers	Percentiles
1	A	275/325 (85%)	250 (91%)	25 (9%)	0	100 100

Continued on next page...

Continued from previous page...

Mol	Chain	Analysed	Favoured	Allowed	Outliers	Percentiles	
1	B	275/325 (85%)	252 (92%)	23 (8%)	0	100	100
1	C	271/325 (83%)	236 (87%)	33 (12%)	2 (1%)	25	60
1	D	271/325 (83%)	247 (91%)	21 (8%)	3 (1%)	17	48
All	All	1092/1300 (84%)	985 (90%)	102 (9%)	5 (0%)	32	68

All (5) Ramachandran outliers are listed below:

Mol	Chain	Res	Type
1	C	7	THR
1	D	293	LEU
1	C	248	ILE
1	D	39	PRO
1	D	285	VAL

5.3.2 Protein sidechains ⓘ

In the following table, the Percentiles column shows the percent sidechain outliers of the chain as a percentile score with respect to all X-ray entries followed by that with respect to entries of similar resolution.

The Analysed column shows the number of residues for which the sidechain conformation was analysed, and the total number of residues.

Mol	Chain	Analysed	Rotameric	Outliers	Percentiles	
1	A	257/299 (86%)	229 (89%)	28 (11%)	7	22
1	B	257/299 (86%)	230 (90%)	27 (10%)	8	24
1	C	255/299 (85%)	222 (87%)	33 (13%)	5	15
1	D	255/299 (85%)	228 (89%)	27 (11%)	8	24
All	All	1024/1196 (86%)	909 (89%)	115 (11%)	7	21

5 of 115 residues with a non-rotameric sidechain are listed below:

Mol	Chain	Res	Type
1	B	280	SER
1	C	105	ASN
1	D	164	LEU
1	B	291	ILE
1	C	41	LYS

Some sidechains can be flipped to improve hydrogen bonding and reduce clashes. 5 of 40 such sidechains are listed below:

Mol	Chain	Res	Type
1	B	272	HIS
1	C	158	ASN
1	D	219	ASN
1	C	105	ASN
1	C	187	GLN

5.3.3 RNA [i](#)

There are no RNA molecules in this entry.

5.4 Non-standard residues in protein, DNA, RNA chains [i](#)

There are no non-standard protein/DNA/RNA residues in this entry.

5.5 Carbohydrates [i](#)

There are no carbohydrates in this entry.

5.6 Ligand geometry [i](#)

Of 11 ligands modelled in this entry, 7 are monoatomic - leaving 4 for Mogul analysis.

In the following table, the Counts columns list the number of bonds (or angles) for which Mogul statistics could be retrieved, the number of bonds (or angles) that are observed in the model and the number of bonds (or angles) that are defined in the chemical component dictionary. The Link column lists molecule types, if any, to which the group is linked. The Z score for a bond length (or angle) is the number of standard deviations the observed value is removed from the expected value. A bond length (or angle) with $|Z| > 2$ is considered an outlier worth inspection. RMSZ is the root-mean-square of all Z scores of the bond lengths (or angles).

Mol	Type	Chain	Res	Link	Bond lengths			Bond angles		
					Counts	RMSZ	$\# Z > 2$	Counts	RMSZ	$\# Z > 2$
2	ANP	A	601	3	29,33,33	1.77	7 (24%)	28,52,52	1.99	5 (17%)
2	ANP	B	600	3	29,33,33	1.53	5 (17%)	28,52,52	2.01	5 (17%)
4	ADP	C	500	3	25,29,29	1.06	1 (4%)	24,45,45	1.74	4 (16%)
2	ANP	D	602	3	29,33,33	1.66	6 (20%)	28,52,52	2.13	4 (14%)

In the following table, the Chirals column lists the number of chiral outliers, the number of chiral

centers analysed, the number of these observed in the model and the number defined in the chemical component dictionary. Similar counts are reported in the Torsion and Rings columns. '-' means no outliers of that kind were identified.

Mol	Type	Chain	Res	Link	Chirals	Torsions	Rings
2	ANP	A	601	3	-	0/13/38/38	0/3/3/3
2	ANP	B	600	3	-	0/13/38/38	0/3/3/3
4	ADP	C	500	3	-	0/12/32/32	0/3/3/3
2	ANP	D	602	3	-	0/13/38/38	0/3/3/3

The worst 5 of 19 bond length outliers are listed below:

Mol	Chain	Res	Type	Atoms	Z	Observed(Å)	Ideal(Å)
2	D	602	ANP	PB-O2B	-3.24	1.47	1.56
2	A	601	ANP	PB-O2B	-3.12	1.48	1.56
2	B	600	ANP	PB-O2B	-2.52	1.49	1.56
2	A	601	ANP	PA-O2A	-2.03	1.44	1.55
2	B	600	ANP	PG-O1G	2.06	1.48	1.46

The worst 5 of 18 bond angle outliers are listed below:

Mol	Chain	Res	Type	Atoms	Z	Observed(°)	Ideal(°)
2	D	602	ANP	N3-C2-N1	-7.70	122.15	128.86
2	B	600	ANP	N3-C2-N1	-7.37	122.44	128.86
2	A	601	ANP	N3-C2-N1	-7.31	122.49	128.86
4	C	500	ADP	N3-C2-N1	-5.61	123.97	128.86
2	D	602	ANP	PA-O3A-PB	-4.51	116.44	132.38

There are no chirality outliers.

There are no torsion outliers.

There are no ring outliers.

4 monomers are involved in 14 short contacts:

Mol	Chain	Res	Type	Clashes	Symm-Clashes
2	A	601	ANP	4	0
2	B	600	ANP	3	0
4	C	500	ADP	5	0
2	D	602	ANP	2	0

5.7 Other polymers ⓘ

There are no such residues in this entry.

5.8 Polymer linkage issues ⓘ

There are no chain breaks in this entry.

6 Fit of model and data [i](#)

6.1 Protein, DNA and RNA chains [i](#)

In the following table, the column labelled ‘#RSRZ> 2’ contains the number (and percentage) of RSRZ outliers, followed by percent RSRZ outliers for the chain as percentile scores relative to all X-ray entries and entries of similar resolution. The OWAB column contains the minimum, median, 95th percentile and maximum values of the occupancy-weighted average B-factor per residue. The column labelled ‘Q< 0.9’ lists the number of (and percentage) of residues with an average occupancy less than 0.9.

Mol	Chain	Analysed	<RSRZ>	#RSRZ>2	OWAB(Å ²)	Q<0.9
1	A	281/325 (86%)	-0.40	4 (1%) 75 74	40, 52, 76, 110	0
1	B	281/325 (86%)	-0.53	1 (0%) 92 92	39, 52, 80, 109	0
1	C	279/325 (85%)	-0.08	10 (3%) 43 37	50, 78, 113, 122	0
1	D	279/325 (85%)	-0.47	3 (1%) 80 79	41, 57, 74, 97	0
All	All	1120/1300 (86%)	-0.37	18 (1%) 72 70	39, 58, 101, 122	0

The worst 5 of 18 RSRZ outliers are listed below:

Mol	Chain	Res	Type	RSRZ
1	C	42	PRO	7.0
1	A	42	PRO	6.4
1	C	295	LEU	4.5
1	C	41	LYS	3.8
1	D	42	PRO	3.7

6.2 Non-standard residues in protein, DNA, RNA chains [i](#)

There are no non-standard protein/DNA/RNA residues in this entry.

6.3 Carbohydrates [i](#)

There are no carbohydrates in this entry.

6.4 Ligands [i](#)

In the following table, the Atoms column lists the number of modelled atoms in the group and the number defined in the chemical component dictionary. LLDF column lists the quality of electron density of the group with respect to its neighbouring residues in protein, DNA or RNA chains. The B-factors column lists the minimum, median, 95th percentile and maximum values of B factors

of atoms in the group. The column labelled 'Q< 0.9' lists the number of atoms with occupancy less than 0.9.

Mol	Type	Chain	Res	Atoms	RSCC	RSR	LLDF	B-factors(\AA^2)	Q<0.9
3	MG	B	404	1/1	0.97	0.20	5.95	48,48,48,48	0
3	MG	A	402	1/1	0.95	0.23	1.24	61,61,61,61	0
3	MG	B	401	1/1	0.69	0.17	-0.18	60,60,60,60	0
2	ANP	B	600	31/31	0.97	0.11	-0.55	34,42,54,67	0
4	ADP	C	500	27/27	0.96	0.12	-0.60	55,64,75,78	0
2	ANP	D	602	31/31	0.96	0.11	-0.74	40,46,64,68	0
2	ANP	A	601	31/31	0.97	0.12	-0.78	37,46,56,71	0
3	MG	A	405	1/1	0.98	0.07	-1.57	38,38,38,38	0
3	MG	D	406	1/1	0.92	0.17	-	51,51,51,51	0
3	MG	C	400	1/1	0.95	0.08	-	57,57,57,57	0
3	MG	D	403	1/1	0.88	0.27	-	68,68,68,68	0

6.5 Other polymers [i](#)

There are no such residues in this entry.