



# Full wwPDB X-ray Structure Validation Report ⓘ

Feb 13, 2017 – 02:56 am GMT

PDB ID : 1AL8  
Title : THREE-DIMENSIONAL STRUCTURE OF GLYCOLATE OXIDASE WITH  
BOUND ACTIVE-SITE INHIBITORS  
Authors : Stenberg, K.; Lindqvist, Y.  
Deposited on : 1997-06-12  
Resolution : 2.20 Å(reported)

This is a Full wwPDB X-ray Structure Validation Report for a publicly released PDB entry.

We welcome your comments at [validation@mail.wwpdb.org](mailto:validation@mail.wwpdb.org)

A user guide is available at

<http://wwpdb.org/validation/2016/XrayValidationReportHelp>

with specific help available everywhere you see the ⓘ symbol.

---

The following versions of software and data (see [references ⓘ](#)) were used in the production of this report:

MolProbity : 4.02b-467  
Mogul : 1.7.2 (RC1), CSD as538be (2017)  
Xtriage (Phenix) : 1.9-1692  
EDS : trunk28620  
Percentile statistics : 20161228.v01 (using entries in the PDB archive December 28th 2016)  
Refmac : 5.8.0135  
CCP4 : 6.5.0  
Ideal geometry (proteins) : Engh & Huber (2001)  
Ideal geometry (DNA, RNA) : Parkinson et al. (1996)  
Validation Pipeline (wwPDB-VP) : recalc28949

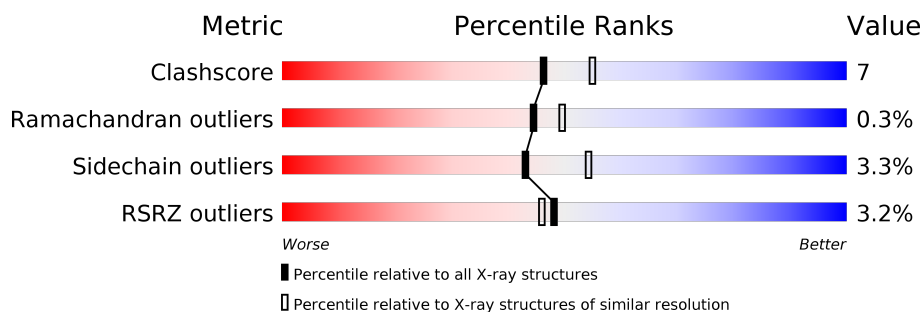
# 1 Overall quality at a glance

The following experimental techniques were used to determine the structure:

*X-RAY DIFFRACTION*


The reported resolution of this entry is 2.20 Å.

Percentile scores (ranging between 0-100) for global validation metrics of the entry are shown in the following graphic. The table shows the number of entries on which the scores are based.



Metric	Whole archive (#Entries)	Similar resolution (#Entries, resolution range(Å))
Clashscore	112137	4730 (2.20-2.20)
Ramachandran outliers	110173	4656 (2.20-2.20)
Sidechain outliers	110143	4657 (2.20-2.20)
RSRZ outliers	101464	4033 (2.20-2.20)

The table below summarises the geometric issues observed across the polymeric chains and their fit to the electron density. The red, orange, yellow and green segments on the lower bar indicate the fraction of residues that contain outliers for  $\geq 3$ , 2, 1 and 0 types of geometric quality criteria. A grey segment represents the fraction of residues that are not modelled. The numeric value for each fraction is indicated below the corresponding segment, with a dot representing fractions  $\leq 5\%$ . The upper red bar (where present) indicates the fraction of residues that have poor fit to the electron density. The numeric value is given above the bar.

Mol	Chain	Length	Quality of chain
1	A	359	

The following table lists non-polymeric compounds, carbohydrate monomers and non-standard residues in protein, DNA, RNA chains that are outliers for geometric or electron-density-fit criteria:

Mol	Type	Chain	Res	Chirality	Geometry	Clashes	Electron density
2	FMN	A	360	X	-	-	-

## 2 Entry composition [i](#)

There are 4 unique types of molecules in this entry. The entry contains 2766 atoms, of which 0 are hydrogens and 0 are deuteriums.

In the tables below, the ZeroOcc column contains the number of atoms modelled with zero occupancy, the AltConf column contains the number of residues with at least one atom in alternate conformation and the Trace column contains the number of residues modelled with at most 2 atoms.

- Molecule 1 is a protein called GLYCOLATE OXIDASE.

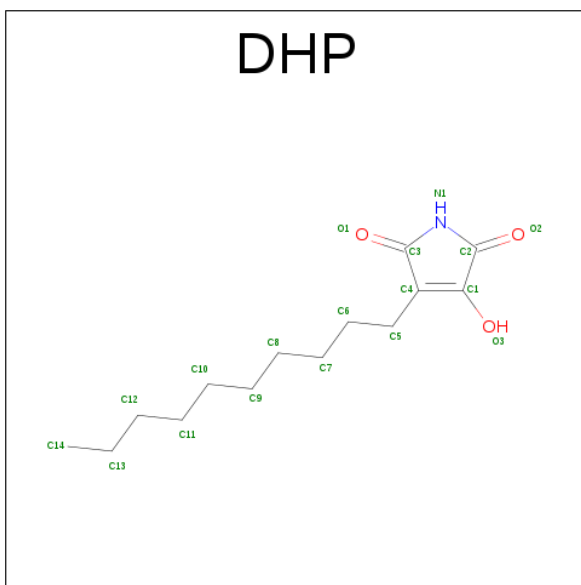
Mol	Chain	Residues	Atoms					ZeroOcc	AltConf	Trace
1	A	344	Total	C	N	O	S	0	0	0
			2649	1692	459	485	13			

- Molecule 2 is FLAVIN MONONUCLEOTIDE (three-letter code: FMN) (formula:  $C_{17}H_{21}N_4O_9P$ ).



Mol	Chain	Residues	Atoms					ZeroOcc	AltConf
2	A	1	Total	C	N	O	P	0	0
			31	17	4	9	1		

- Molecule 3 is 3-DECYL-2,5-DIOXO-4-HYDROXY-3-PYRROLINE (three-letter code: DHP) (formula:  $C_{14}H_{23}NO_3$ ).



Mol	Chain	Residues	Atoms				ZeroOcc	AltConf
3	A	1	Total	C	N	O	2	0
			18	14	1	3		

- Molecule 4 is water.

Mol	Chain	Residues	Atoms		ZeroOcc	AltConf
4	A	68	Total	O	0	0
			68	68		



- Molecule 1: GLYCOLATE OXIDASE



## 4 Data and refinement statistics

Property	Value	Source
Space group	I 4	Depositor
Cell constants a, b, c, $\alpha$ , $\beta$ , $\gamma$	95.40Å 95.40Å 93.50Å 90.00° 90.00° 90.00°	Depositor
Resolution (Å)	8.00 – 2.20 67.46 – 2.20	Depositor EDS
% Data completeness (in resolution range)	100.0 (8.00-2.20) 98.6 (67.46-2.20)	Depositor EDS
$R_{merge}$	(Not available)	Depositor
$R_{sym}$	0.09	Depositor
$\langle I/\sigma(I) \rangle$ <sup>1</sup>	2.88 (at 2.20Å)	Xtriage
Refinement program	X-PLOR 3.1	Depositor
R, $R_{free}$	0.194 , 0.251 0.183 , (Not available)	Depositor DCC
$R_{free}$ test set	No test flags present.	DCC
Wilson B-factor (Å <sup>2</sup> )	25.2	Xtriage
Anisotropy	0.131	Xtriage
Bulk solvent $k_{sol}$ (e/Å <sup>3</sup> ), $B_{sol}$ (Å <sup>2</sup> )	0.34 , 49.0	EDS
L-test for twinning <sup>2</sup>	$\langle  L  \rangle = 0.45$ , $\langle L^2 \rangle = 0.27$	Xtriage
Estimated twinning fraction	0.026 for l,-k,h 0.036 for -l,-k,-h 0.029 for -h,-l,-k 0.026 for -h,l,k 0.098 for -k,-h,-l	Xtriage
$F_o, F_c$ correlation	0.95	EDS
Total number of atoms	2766	wwPDB-VP
Average B, all atoms (Å <sup>2</sup> )	27.0	wwPDB-VP

Xtriage's analysis on translational NCS is as follows: *The largest off-origin peak in the Patterson function is 4.07% of the height of the origin peak. No significant pseudotranslation is detected.*

<sup>1</sup>Intensities estimated from amplitudes.

<sup>2</sup>Theoretical values of  $\langle |L| \rangle$ ,  $\langle L^2 \rangle$  for acentric reflections are 0.5, 0.333 respectively for untwinned datasets, and 0.375, 0.2 for perfectly twinned datasets.

## 5 Model quality [i](#)

### 5.1 Standard geometry [i](#)

Bond lengths and bond angles in the following residue types are not validated in this section: FMN, DHP

The Z score for a bond length (or angle) is the number of standard deviations the observed value is removed from the expected value. A bond length (or angle) with  $|Z| > 5$  is considered an outlier worth inspection. RMSZ is the root-mean-square of all Z scores of the bond lengths (or angles).

Mol	Chain	Bond lengths		Bond angles	
		RMSZ	$\# Z  > 5$	RMSZ	$\# Z  > 5$
1	A	0.37	0/2696	0.65	0/3649

There are no bond length outliers.

There are no bond angle outliers.

There are no chirality outliers.

There are no planarity outliers.

### 5.2 Too-close contacts [i](#)

In the following table, the Non-H and H(model) columns list the number of non-hydrogen atoms and hydrogen atoms in the chain respectively. The H(added) column lists the number of hydrogen atoms added and optimized by MolProbity. The Clashes column lists the number of clashes within the asymmetric unit, whereas Symm-Clashes lists symmetry related clashes.

Mol	Chain	Non-H	H(model)	H(added)	Clashes	Symm-Clashes
1	A	2649	0	2710	38	0
2	A	31	0	18	1	0
3	A	18	0	22	0	0
4	A	68	0	0	2	0
All	All	2766	0	2750	39	0

The all-atom clashscore is defined as the number of clashes found per 1000 atoms (including hydrogen atoms). The all-atom clashscore for this structure is 7.

All (39) close contacts within the same asymmetric unit are listed below, sorted by their clash magnitude.

Atom-1	Atom-2	Interatomic distance (Å)	Clash overlap (Å)
1:A:67:PHE:HB3	1:A:123:ILE:HD13	1.66	0.77
1:A:300:LEU:HD13	1:A:354:ILE:HD11	1.68	0.74
1:A:54:ASP:O	1:A:344:ARG:HD3	1.90	0.71
1:A:33:TRP:CH2	1:A:37:GLU:HG3	2.30	0.66
1:A:23:ASP:O	1:A:27:SER:HB2	2.01	0.61
1:A:138:ALA:O	1:A:142:ARG:HG2	2.01	0.60
1:A:68:LYS:HB2	1:A:68:LYS:HZ3	1.69	0.56
1:A:108:TRP:CZ3	1:A:131:TYR:OH	2.61	0.54
1:A:175:PRO:HD2	1:A:178:LEU:HD12	1.92	0.52
1:A:100:GLY:HA2	4:A:416:HOH:O	2.12	0.50
1:A:238:ALA:HB2	1:A:272:VAL:HG13	1.94	0.50
1:A:1:MET:HG3	1:A:2:GLU:H	1.77	0.49
1:A:181:LYS:HA	1:A:184:GLU:HG2	1.95	0.49
1:A:3:ILE:HD12	1:A:3:ILE:N	2.27	0.49
1:A:108:TRP:HZ3	1:A:131:TYR:OH	1.93	0.49
1:A:60:MET:CE	1:A:335:GLU:HB2	2.42	0.49
1:A:76:ALA:HB2	1:A:306:PHE:HB3	1.94	0.48
1:A:85:HIS:HD2	1:A:87:GLU:H	1.60	0.48
1:A:79:ALA:CB	1:A:108:TRP:HB2	2.44	0.47
1:A:1:MET:HG3	1:A:2:GLU:N	2.30	0.47
1:A:68:LYS:HB2	1:A:68:LYS:NZ	2.30	0.47
2:A:360:FMN:H9	2:A:360:FMN:H1'2	1.66	0.46
1:A:79:ALA:HB1	1:A:108:TRP:HB2	1.97	0.46
1:A:267:MET:HG3	4:A:465:HOH:O	2.14	0.46
1:A:82:LYS:HA	1:A:85:HIS:O	2.15	0.46
1:A:133:ASP:OD2	1:A:136:VAL:HG23	2.17	0.45
1:A:181:LYS:HA	1:A:184:GLU:CG	2.47	0.45
1:A:285:ASP:HB3	1:A:306:PHE:HB2	2.00	0.44
1:A:277:GLN:HB3	1:A:279:ARG:HH11	1.84	0.43
1:A:112:SER:HA	1:A:182:ASN:OD1	2.19	0.42
1:A:232:VAL:O	1:A:251:VAL:HA	2.19	0.42
1:A:206:GLN:HA	1:A:206:GLN:NE2	2.35	0.42
1:A:233:ILE:HD12	1:A:234:THR:HG23	2.00	0.42
1:A:87:GLU:HB3	1:A:91:ALA:HB2	2.02	0.41
1:A:228:LEU:HD22	1:A:248:GLY:HA3	2.01	0.41
1:A:131:TYR:HA	1:A:206:GLN:O	2.21	0.41
1:A:350:SER:O	1:A:353:HIS:HB2	2.21	0.41
1:A:11:ALA:O	1:A:15:GLN:HG3	2.21	0.40
1:A:258:GLN:HB3	1:A:258:GLN:HE21	1.65	0.40

There are no symmetry-related clashes.



## 5.3 Torsion angles [i](#)

### 5.3.1 Protein backbone [i](#)

In the following table, the Percentiles column shows the percent Ramachandran outliers of the chain as a percentile score with respect to all X-ray entries followed by that with respect to entries of similar resolution.

The Analysed column shows the number of residues for which the backbone conformation was analysed, and the total number of residues.

Mol	Chain	Analysed	Favoured	Allowed	Outliers	Percentiles	
1	A	338/359 (94%)	322 (95%)	15 (4%)	1 (0%)	44	49

All (1) Ramachandran outliers are listed below:

Mol	Chain	Res	Type
1	A	204	ALA

### 5.3.2 Protein sidechains [i](#)

In the following table, the Percentiles column shows the percent sidechain outliers of the chain as a percentile score with respect to all X-ray entries followed by that with respect to entries of similar resolution.

The Analysed column shows the number of residues for which the sidechain conformation was analysed, and the total number of residues.

Mol	Chain	Analysed	Rotameric	Outliers	Percentiles	
1	A	276/287 (96%)	267 (97%)	9 (3%)	43	54

All (9) residues with a non-rotameric sidechain are listed below:

Mol	Chain	Res	Type
1	A	68	LYS
1	A	103	MET
1	A	114	GLU
1	A	128	LEU
1	A	170	ASN
1	A	211	LEU
1	A	258	GLN
1	A	271	GLU
1	A	300	LEU

Some sidechains can be flipped to improve hydrogen bonding and reduce clashes. All (4) such sidechains are listed below:

Mol	Chain	Res	Type
1	A	7	ASN
1	A	57	ASN
1	A	85	HIS
1	A	258	GLN

### 5.3.3 RNA [i](#)

There are no RNA molecules in this entry.

## 5.4 Non-standard residues in protein, DNA, RNA chains [i](#)

There are no non-standard protein/DNA/RNA residues in this entry.

## 5.5 Carbohydrates [i](#)

There are no carbohydrates in this entry.

## 5.6 Ligand geometry [i](#)

2 ligands are modelled in this entry.

In the following table, the Counts columns list the number of bonds (or angles) for which Mogul statistics could be retrieved, the number of bonds (or angles) that are observed in the model and the number of bonds (or angles) that are defined in the chemical component dictionary. The Link column lists molecule types, if any, to which the group is linked. The Z score for a bond length (or angle) is the number of standard deviations the observed value is removed from the expected value. A bond length (or angle) with  $|Z| > 2$  is considered an outlier worth inspection. RMSZ is the root-mean-square of all Z scores of the bond lengths (or angles).

Mol	Type	Chain	Res	Link	Bond lengths			Bond angles		
					Counts	RMSZ	$\# Z  > 2$	Counts	RMSZ	$\# Z  > 2$
2	FMN	A	360	-	31,33,33	2.87	7 (22%)	38,50,50	3.22	15 (39%)
3	DHP	A	361	-	18,18,18	4.07	6 (33%)	19,22,22	5.38	7 (36%)

In the following table, the Chirals column lists the number of chiral outliers, the number of chiral centers analysed, the number of these observed in the model and the number defined in the chemical component dictionary. Similar counts are reported in the Torsion and Rings columns. '-' means no outliers of that kind were identified.

Mol	Type	Chain	Res	Link	Chirals	Torsions	Rings
2	FMN	A	360	-	2/2/4/4	0/16/18/18	0/3/3/3
3	DHP	A	361	-	-	0/10/26/26	0/1/1/1

All (13) bond length outliers are listed below:

Mol	Chain	Res	Type	Atoms	Z	Observed(Å)	Ideal(Å)
2	A	360	FMN	C1'-N10	-12.92	1.35	1.48
3	A	361	DHP	C3-C4	-6.45	1.35	1.48
3	A	361	DHP	O3-C1	-4.44	1.18	1.33
3	A	361	DHP	C1-C2	-4.20	1.32	1.49
2	A	360	FMN	O2'-C2'	-3.47	1.35	1.43
3	A	361	DHP	C2-N1	-2.63	1.32	1.37
2	A	360	FMN	C6-C5A	-2.45	1.38	1.41
2	A	360	FMN	C2'-C3'	-2.35	1.48	1.53
2	A	360	FMN	C4A-N5	2.62	1.37	1.33
2	A	360	FMN	C10-N1	3.57	1.38	1.33
2	A	360	FMN	C4-N3	4.93	1.42	1.33
3	A	361	DHP	O2-C2	6.72	1.36	1.23
3	A	361	DHP	O1-C3	12.54	1.47	1.23

All (22) bond angle outliers are listed below:

Mol	Chain	Res	Type	Atoms	Z	Observed(°)	Ideal(°)
3	A	361	DHP	O1-C3-N1	-9.91	100.95	125.11
2	A	360	FMN	C4A-C4-N3	-7.14	113.31	123.48
2	A	360	FMN	C4-C4A-N5	-3.63	114.70	118.68
3	A	361	DHP	C3-N1-C2	-3.37	107.69	111.19
3	A	361	DHP	O3-C1-C4	-3.02	121.47	129.05
2	A	360	FMN	O2P-P-O5'	-2.11	101.11	106.73
3	A	361	DHP	O3-C1-C2	2.04	128.02	120.53
2	A	360	FMN	O3'-C3'-C4'	2.34	114.61	108.82
2	A	360	FMN	C1'-N10-C10	2.60	121.17	118.50
2	A	360	FMN	C1'-N10-C9A	3.02	121.12	118.35
2	A	360	FMN	O2'-C2'-C1'	3.19	117.17	109.79
2	A	360	FMN	C1'-C2'-C3'	3.48	119.76	109.82
2	A	360	FMN	O5'-C5'-C4'	3.86	119.66	109.36
3	A	361	DHP	C4-C3-N1	4.03	110.16	106.75
2	A	360	FMN	P-O5'-C5'	4.15	129.72	118.30
2	A	360	FMN	C5A-C9A-N10	4.19	120.77	117.66
2	A	360	FMN	C4'-C3'-C2'	4.25	122.56	113.41
2	A	360	FMN	C4-C4A-C10	4.79	123.84	119.96
2	A	360	FMN	O4'-C4'-C3'	5.82	123.53	109.09
3	A	361	DHP	C5-C4-C3	7.78	129.43	121.49

*Continued on next page...*

*Continued from previous page...*

Mol	Chain	Res	Type	Atoms	Z	Observed(°)	Ideal(°)
2	A	360	FMN	C4-N3-C2	11.42	125.14	115.16
3	A	361	DHP	O1-C3-C4	18.62	148.88	128.11

All (2) chirality outliers are listed below:

Mol	Chain	Res	Type	Atom
2	A	360	FMN	C4'
2	A	360	FMN	C2'

There are no torsion outliers.

There are no ring outliers.

1 monomer is involved in 1 short contact:

Mol	Chain	Res	Type	Clashes	Symm-Clashes
2	A	360	FMN	1	0

## 5.7 Other polymers [i](#)

There are no such residues in this entry.

## 5.8 Polymer linkage issues [i](#)

There are no chain breaks in this entry.

## 6 Fit of model and data [i](#)

### 6.1 Protein, DNA and RNA chains [i](#)

In the following table, the column labelled ‘#RSRZ > 2’ contains the number (and percentage) of RSRZ outliers, followed by percent RSRZ outliers for the chain as percentile scores relative to all X-ray entries and entries of similar resolution. The OWAB column contains the minimum, median, 95<sup>th</sup> percentile and maximum values of the occupancy-weighted average B-factor per residue. The column labelled ‘Q < 0.9’ lists the number of (and percentage) of residues with an average occupancy less than 0.9.

Mol	Chain	Analysed	<RSRZ>	#RSRZ > 2		OWAB(Å <sup>2</sup> )	Q < 0.9
1	A	344/359 (95%)	-0.56	11 (3%)	48 46	8, 22, 64, 131	0

All (11) RSRZ outliers are listed below:

Mol	Chain	Res	Type	RSRZ
1	A	202	TYR	7.3
1	A	1	MET	5.2
1	A	200	SER	5.0
1	A	199	LEU	4.4
1	A	188	LEU	3.6
1	A	203	VAL	3.0
1	A	186	ILE	2.7
1	A	187	ASP	2.6
1	A	168	ILE	2.6
1	A	204	ALA	2.6
1	A	359	ASP	2.1

### 6.2 Non-standard residues in protein, DNA, RNA chains [i](#)

There are no non-standard protein/DNA/RNA residues in this entry.

### 6.3 Carbohydrates [i](#)

There are no carbohydrates in this entry.

### 6.4 Ligands [i](#)

In the following table, the Atoms column lists the number of modelled atoms in the group and the number defined in the chemical component dictionary. LLDF column lists the quality of electron density of the group with respect to its neighbouring residues in protein, DNA or RNA chains.

The B-factors column lists the minimum, median, 95<sup>th</sup> percentile and maximum values of B factors of atoms in the group. The column labelled 'Q< 0.9' lists the number of atoms with occupancy less than 0.9.

Mol	Type	Chain	Res	Atoms	RSCC	RSR	LLDF	B-factors( $\text{\AA}^2$ )	Q<0.9
3	DHP	A	361	18/18	0.96	0.13	0.32	13,23,34,34	2
2	FMN	A	360	31/31	0.98	0.08	0.06	9,15,18,18	0

## 6.5 Other polymers [i](#)

There are no such residues in this entry.