



Full wwPDB X-ray Structure Validation Report ⓘ

Feb 13, 2017 – 04:31 pm GMT

PDB ID : 3AS0
Title : Crystal Structure Analysis of Chitinase A from *Vibrio harveyi* with novel inhibitors - W275G mutant complex structure with Sanguinarine
Authors : Pantoom, S.; Vetter, I.R.; Prinz, H.; Suginta, W.
Deposited on : 2010-12-09
Resolution : 2.00 Å(reported)

This is a Full wwPDB X-ray Structure Validation Report for a publicly released PDB entry.

We welcome your comments at validation@mail.wwpdb.org

A user guide is available at

<http://wwpdb.org/validation/2016/XrayValidationReportHelp>

with specific help available everywhere you see the ⓘ symbol.

The following versions of software and data (see [references ⓘ](#)) were used in the production of this report:

MolProbity : 4.02b-467
Mogul : 1.7.2 (RC1), CSD as538be (2017)
Xtriage (Phenix) : 1.9-1692
EDS : trunk28620
Percentile statistics : 20161228.v01 (using entries in the PDB archive December 28th 2016)
Refmac : 5.8.0135
CCP4 : 6.5.0
Ideal geometry (proteins) : Engh & Huber (2001)
Ideal geometry (DNA, RNA) : Parkinson et al. (1996)
Validation Pipeline (wwPDB-VP) : recalc28949

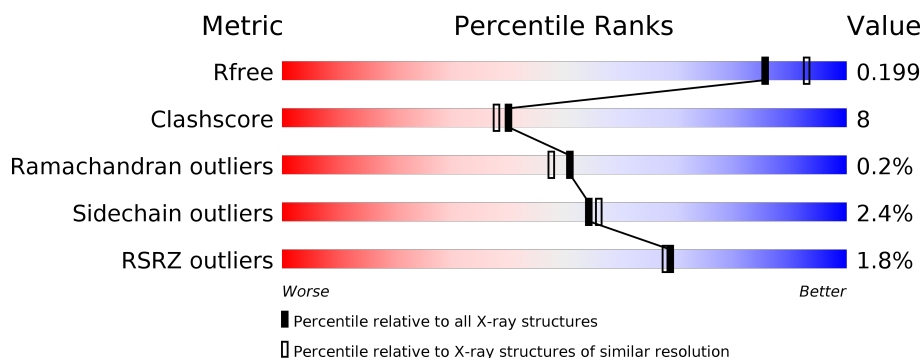
1 Overall quality at a glance

The following experimental techniques were used to determine the structure:

X-RAY DIFFRACTION

The reported resolution of this entry is 2.00 Å.

Percentile scores (ranging between 0-100) for global validation metrics of the entry are shown in the following graphic. The table shows the number of entries on which the scores are based.



Metric	Whole archive (#Entries)	Similar resolution (#Entries, resolution range(Å))
R_{free}	100719	6609 (2.00-2.00)
Clashscore	112137	7775 (2.00-2.00)
Ramachandran outliers	110173	7679 (2.00-2.00)
Sidechain outliers	110143	7678 (2.00-2.00)
RSRZ outliers	101464	6696 (2.00-2.00)

The table below summarises the geometric issues observed across the polymeric chains and their fit to the electron density. The red, orange, yellow and green segments on the lower bar indicate the fraction of residues that contain outliers for ≥ 3 , 2, 1 and 0 types of geometric quality criteria. A grey segment represents the fraction of residues that are not modelled. The numeric value for each fraction is indicated below the corresponding segment, with a dot representing fractions $\leq 5\%$. The upper red bar (where present) indicates the fraction of residues that have poor fit to the electron density. The numeric value is given above the bar.

Mol	Chain	Length	Quality of chain
1	A	584	<div> <div>2%</div> <div> <div></div> <div>84%</div> <div>12%</div> <div>..</div> </div> </div>

The following table lists non-polymeric compounds, carbohydrate monomers and non-standard residues in protein, DNA, RNA chains that are outliers for geometric or electron-density-fit criteria:

Mol	Type	Chain	Res	Chirality	Geometry	Clashes	Electron density
2	SAU	A	606	-	-	-	X
2	SAU	A	607	-	-	-	X

2 Entry composition

There are 4 unique types of molecules in this entry. The entry contains 4934 atoms, of which 0 are hydrogens and 0 are deuteriums.

In the tables below, the ZeroOcc column contains the number of atoms modelled with zero occupancy, the AltConf column contains the number of residues with at least one atom in alternate conformation and the Trace column contains the number of residues modelled with at most 2 atoms.

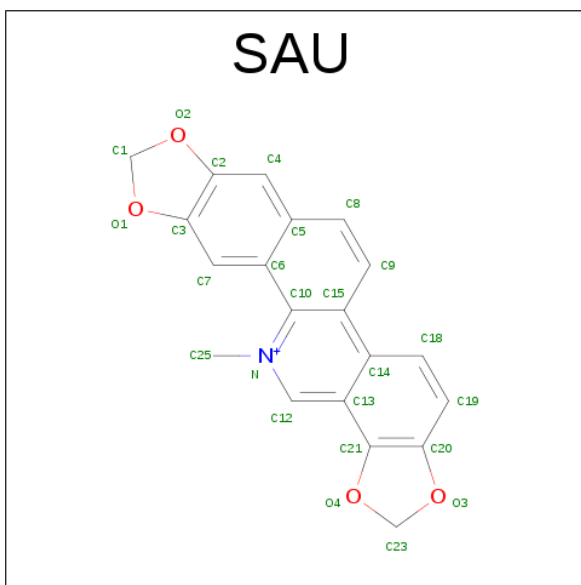
- Molecule 1 is a protein called Chitinase A.

Mol	Chain	Residues	Atoms					ZeroOcc	AltConf	Trace
1	A	570	Total	C	N	O	S	0	14	0
			4435	2818	712	877	28			

There are 9 discrepancies between the modelled and reference sequences:

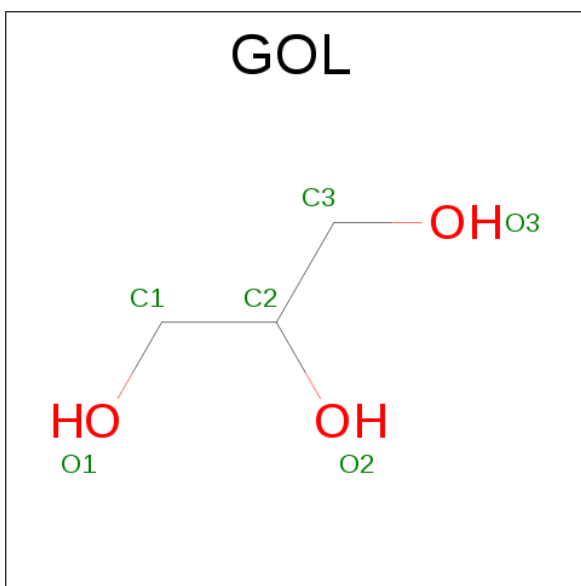
Chain	Residue	Modelled	Actual	Comment	Reference
A	275	GLY	TRP	ENGINEERED MUTATION	UNP Q9AMP1
A	598	ARG	-	EXPRESSION TAG	UNP Q9AMP1
A	599	SER	-	EXPRESSION TAG	UNP Q9AMP1
A	600	HIS	-	EXPRESSION TAG	UNP Q9AMP1
A	601	HIS	-	EXPRESSION TAG	UNP Q9AMP1
A	602	HIS	-	EXPRESSION TAG	UNP Q9AMP1
A	603	HIS	-	EXPRESSION TAG	UNP Q9AMP1
A	604	HIS	-	EXPRESSION TAG	UNP Q9AMP1
A	605	HIS	-	EXPRESSION TAG	UNP Q9AMP1

- Molecule 2 is 13-METHYL[1,3]BENZODIOXOLO[5,6-C][1,3]DIOXOLO[4,5-I]PHENANTHRIDIN-13-IUM (three-letter code: SAU) (formula: C₂₀H₁₄NO₄).



Mol	Chain	Residues	Atoms				ZeroOcc	AltConf
2	A	1	Total 25	C 20	N 1	O 4	0	0
2	A	1	Total 25	C 20	N 1	O 4	0	0

- Molecule 3 is GLYCEROL (three-letter code: GOL) (formula: $\text{C}_3\text{H}_8\text{O}_3$).



Mol	Chain	Residues	Atoms			ZeroOcc	AltConf
3	A	1	Total	C	O	0	0
			6	3	3		

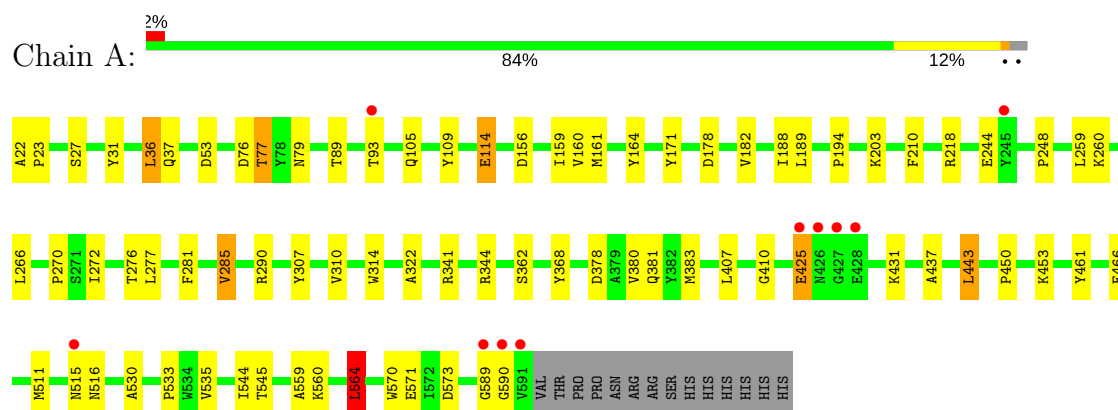
- Molecule 4 is water.

Mol	Chain	Residues	Atoms		ZeroOcc	AltConf
4	A	443	Total 443	O 443	0	0

3 Residue-property plots

These plots are drawn for all protein, RNA and DNA chains in the entry. The first graphic for a chain summarises the proportions of the various outlier classes displayed in the second graphic. The second graphic shows the sequence view annotated by issues in geometry and electron density. Residues are color-coded according to the number of geometric quality criteria for which they contain at least one outlier: green = 0, yellow = 1, orange = 2 and red = 3 or more. A red dot above a residue indicates a poor fit to the electron density ($\text{RSRZ} > 2$). Stretches of 2 or more consecutive residues without any outlier are shown as a green connector. Residues present in the sample, but not in the model, are shown in grey.

• Molecule 1: Chitinase A



4 Data and refinement statistics

Property	Value	Source
Space group	P 21 21 21	Depositor
Cell constants a, b, c, α , β , γ	66.69Å 83.34Å 102.76Å 90.00° 90.00° 90.00°	Depositor
Resolution (Å)	19.96 – 2.00 19.95 – 2.00	Depositor EDS
% Data completeness (in resolution range)	100.0 (19.96-2.00) 100.0 (19.95-2.00)	Depositor EDS
R_{merge}	0.09	Depositor
R_{sym}	(Not available)	Depositor
$\langle I/\sigma(I) \rangle$ ¹	5.69 (at 2.01Å)	Xtriage
Refinement program	REFMAC 5.5.0102	Depositor
R, R_{free}	0.145 , 0.197 0.147 , 0.199	Depositor DCC
R_{free} test set	1968 reflections (5.27%)	DCC
Wilson B-factor (Å ²)	20.8	Xtriage
Anisotropy	0.172	Xtriage
Bulk solvent k_{sol} (e/Å ³), B_{sol} (Å ²)	0.39 , 50.5	EDS
L-test for twinning ²	$\langle L \rangle = 0.48$, $\langle L^2 \rangle = 0.32$	Xtriage
Estimated twinning fraction	No twinning to report.	Xtriage
F_o, F_c correlation	0.96	EDS
Total number of atoms	4934	wwPDB-VP
Average B, all atoms (Å ²)	21.0	wwPDB-VP

Xtriage's analysis on translational NCS is as follows: *The largest off-origin peak in the Patterson function is 5.56% of the height of the origin peak. No significant pseudotranslation is detected.*

¹Intensities estimated from amplitudes.

²Theoretical values of $\langle |L| \rangle$, $\langle L^2 \rangle$ for acentric reflections are 0.5, 0.333 respectively for untwinned datasets, and 0.375, 0.2 for perfectly twinned datasets.

5 Model quality

5.1 Standard geometry

Bond lengths and bond angles in the following residue types are not validated in this section: GOL, SAU

The Z score for a bond length (or angle) is the number of standard deviations the observed value is removed from the expected value. A bond length (or angle) with $|Z| > 5$ is considered an outlier worth inspection. RMSZ is the root-mean-square of all Z scores of the bond lengths (or angles).

Mol	Chain	Bond lengths		Bond angles	
		RMSZ	$\# Z > 5$	RMSZ	$\# Z > 5$
1	A	1.11	2/4587 (0.0%)	0.96	13/6235 (0.2%)

All (2) bond length outliers are listed below:

Mol	Chain	Res	Type	Atoms	Z	Observed(Å)	Ideal(Å)
1	A	114	GLU	CB-CG	-6.13	1.40	1.52
1	A	285	VAL	CB-CG2	5.15	1.63	1.52

All (13) bond angle outliers are listed below:

Mol	Chain	Res	Type	Atoms	Z	Observed(°)	Ideal(°)
1	A	341	ARG	NE-CZ-NH2	-9.42	115.59	120.30
1	A	341	ARG	NE-CZ-NH1	9.33	124.97	120.30
1	A	290	ARG	NE-CZ-NH2	-6.65	116.98	120.30
1	A	218	ARG	NE-CZ-NH2	-6.65	116.98	120.30
1	A	344	ARG	NE-CZ-NH2	-6.44	117.08	120.30
1	A	156	ASP	CB-CG-OD1	6.19	123.87	118.30
1	A	36	LEU	CB-CG-CD2	6.18	121.51	111.00
1	A	178	ASP	CB-CG-OD1	5.39	123.15	118.30
1	A	443	LEU	CB-CG-CD1	5.32	120.05	111.00
1	A	589	GLY	N-CA-C	5.31	126.37	113.10
1	A	564	LEU	CB-CG-CD1	5.28	119.98	111.00
1	A	27	SER	CB-CA-C	-5.11	100.39	110.10
1	A	218	ARG	NE-CZ-NH1	5.00	122.80	120.30

There are no chirality outliers.

There are no planarity outliers.

5.2 Too-close contacts ⓘ

In the following table, the Non-H and H(model) columns list the number of non-hydrogen atoms and hydrogen atoms in the chain respectively. The H(added) column lists the number of hydrogen atoms added and optimized by MolProbity. The Clashes column lists the number of clashes within the asymmetric unit, whereas Symm-Clashes lists symmetry related clashes.

Mol	Chain	Non-H	H(model)	H(added)	Clashes	Symm-Clashes
1	A	4435	0	4222	64	0
2	A	50	0	28	10	0
3	A	6	0	8	0	0
4	A	443	0	0	9	1
All	All	4934	0	4258	73	1

The all-atom clashscore is defined as the number of clashes found per 1000 atoms (including hydrogen atoms). The all-atom clashscore for this structure is 8.

All (73) close contacts within the same asymmetric unit are listed below, sorted by their clash magnitude.

Atom-1	Atom-2	Interatomic distance (Å)	Clash overlap (Å)
1:A:511[B]:MET:HE3	1:A:544:ILE:CD1	1.52	1.39
1:A:511[B]:MET:CE	1:A:544:ILE:HD12	1.53	1.36
1:A:560:LYS:HE3	4:A:1024:HOH:O	1.57	1.05
1:A:511[B]:MET:CE	1:A:544:ILE:CD1	2.24	1.04
2:A:607:SAU:C25	2:A:607:SAU:H7	1.88	1.02
1:A:79:ASN:OD1	1:A:89[B]:THR:HG22	1.58	0.99
2:A:606:SAU:C25	2:A:606:SAU:H7	1.94	0.97
1:A:560:LYS:HZ1	1:A:590:GLY:N	1.67	0.92
1:A:511[B]:MET:HE3	1:A:544:ILE:HD12	0.90	0.90
2:A:607:SAU:H7	2:A:607:SAU:H25A	1.62	0.80
1:A:76[A]:ASP:OD2	1:A:77[A]:THR:HG22	1.81	0.80
1:A:53:ASP:HB3	4:A:1018:HOH:O	1.81	0.80
2:A:607:SAU:H25B	2:A:607:SAU:H7	1.64	0.76
2:A:606:SAU:H7	2:A:606:SAU:H25B	1.67	0.74
2:A:606:SAU:H7	2:A:606:SAU:H25A	1.68	0.74
1:A:560:LYS:HZ1	1:A:590:GLY:H	1.40	0.70
1:A:53:ASP:CB	4:A:1018:HOH:O	2.42	0.66
2:A:607:SAU:C25	2:A:607:SAU:C7	2.69	0.65
1:A:285:VAL:HG13	4:A:1019:HOH:O	1.97	0.64
1:A:511[B]:MET:HE1	1:A:544:ILE:CD1	2.23	0.64
1:A:511[B]:MET:HE2	1:A:535:VAL:HG21	1.80	0.63
1:A:79:ASN:OD1	1:A:89[A]:THR:HG23	1.98	0.63
1:A:160:VAL:O	1:A:161:MET:HE2	1.98	0.62

Continued on next page...

Continued from previous page...

Atom-1	Atom-2	Interatomic distance (Å)	Clash overlap (Å)
1:A:77[A]:THR:HG23	4:A:1015:HOH:O	2.00	0.62
1:A:93[A]:THR:HG22	4:A:834:HOH:O	1.99	0.62
1:A:37:GLN:HE21	1:A:248:PRO:HD3	1.64	0.61
1:A:560:LYS:NZ	1:A:590:GLY:N	2.48	0.60
1:A:76[A]:ASP:OD2	1:A:77[A]:THR:CG2	2.49	0.59
1:A:79:ASN:OD1	1:A:89[B]:THR:CG2	2.43	0.59
1:A:31:TYR:HD2	4:A:999:HOH:O	1.85	0.58
1:A:22:ALA:N	1:A:23:PRO:CD	2.68	0.57
1:A:188[B]:ILE:HD12	1:A:266:LEU:HD21	1.85	0.57
1:A:511[B]:MET:CE	1:A:544:ILE:HD13	2.28	0.57
1:A:378:ASP:O	1:A:381:GLN:HG2	2.07	0.55
1:A:362:SER:HB3	1:A:383:MET:HE1	1.88	0.54
1:A:511[B]:MET:HE2	1:A:535:VAL:CG2	2.37	0.54
1:A:560:LYS:HZ1	1:A:590:GLY:CA	2.20	0.54
1:A:77[A]:THR:CG2	4:A:1015:HOH:O	2.56	0.53
1:A:511[B]:MET:HE3	1:A:544:ILE:HD11	1.77	0.52
1:A:560:LYS:NZ	1:A:590:GLY:CA	2.73	0.51
1:A:270:PRO:HD3	1:A:307:TYR:CD2	2.46	0.51
1:A:322:ALA:HA	2:A:607:SAU:C15	2.41	0.50
1:A:559:ALA:HA	1:A:564:LEU:HD22	1.93	0.50
1:A:203:LYS:HG3	1:A:210:PHE:CG	2.47	0.50
1:A:194:PRO:HB3	1:A:277:LEU:HD22	1.94	0.50
1:A:560:LYS:NZ	1:A:590:GLY:H	2.07	0.49
1:A:380:VAL:HG22	1:A:453:LYS:HD3	1.93	0.49
1:A:22:ALA:HB3	4:A:738:HOH:O	2.13	0.48
1:A:159:ILE:HG22	1:A:161:MET:HE3	1.94	0.48
1:A:182:VAL:HG11	1:A:259:LEU:HD11	1.96	0.47
1:A:515:ASN:O	1:A:516:ASN:HB2	2.15	0.46
1:A:511[B]:MET:HE1	1:A:544:ILE:HD13	1.95	0.45
1:A:560:LYS:HZ3	1:A:590:GLY:HA3	1.82	0.45
1:A:105:GLN:HG2	1:A:109:TYR:OH	2.16	0.45
1:A:560:LYS:NZ	1:A:590:GLY:HA3	2.32	0.45
1:A:425:GLU:CD	1:A:425:GLU:H	2.21	0.44
1:A:362:SER:HB3	1:A:383:MET:CE	2.48	0.43
1:A:380:VAL:HG11	1:A:450:PRO:HD2	1.99	0.43
1:A:272:ILE:HD12	1:A:310:VAL:CG2	2.49	0.43
1:A:272:ILE:HD12	1:A:310:VAL:HG21	2.00	0.43
1:A:461:TYR:CE1	1:A:570[B]:TRP:HD1	2.37	0.42
1:A:571:GLU:OE2	1:A:573:ASP:OD2	2.36	0.42
1:A:260[A]:LYS:HD2	1:A:260[A]:LYS:HA	1.84	0.42
1:A:164:TYR:CE1	1:A:189:LEU:HD12	2.55	0.42

Continued on next page...

Continued from previous page...

Atom-1	Atom-2	Interatomic distance (Å)	Clash overlap (Å)
1:A:407:LEU:HA	1:A:437:ALA:HB3	2.01	0.41
2:A:606:SAU:H18	2:A:606:SAU:H9	1.85	0.41
1:A:410:GLY:HA2	1:A:530:ALA:HB2	2.02	0.41
1:A:570[B]:TRP:HA	1:A:571:GLU:HA	1.92	0.41
1:A:37:GLN:NE2	1:A:248:PRO:HD3	2.35	0.41
2:A:607:SAU:H9	2:A:607:SAU:H18	1.72	0.40
1:A:380:VAL:HG22	1:A:453:LYS:CD	2.52	0.40
1:A:281:PHE:HB3	1:A:314:TRP:CD2	2.57	0.40
1:A:368:TYR:OH	1:A:431:LYS:HB2	2.21	0.40

All (1) symmetry-related close contacts are listed below. The label for Atom-2 includes the symmetry operator and encoded unit-cell translations to be applied.

Atom-1	Atom-2	Interatomic distance (Å)	Clash overlap (Å)
4:A:1003:HOH:O	4:A:1016:HOH:O[2_554]	1.88	0.32

5.3 Torsion angles [i](#)

5.3.1 Protein backbone [i](#)

In the following table, the Percentiles column shows the percent Ramachandran outliers of the chain as a percentile score with respect to all X-ray entries followed by that with respect to entries of similar resolution.

The Analysed column shows the number of residues for which the backbone conformation was analysed, and the total number of residues.

Mol	Chain	Analysed	Favoured	Allowed	Outliers	Percentiles
1	A	582/584 (100%)	568 (98%)	13 (2%)	1 (0%)	51 48

All (1) Ramachandran outliers are listed below:

Mol	Chain	Res	Type
1	A	171	TYR

5.3.2 Protein sidechains [i](#)

In the following table, the Percentiles column shows the percent sidechain outliers of the chain as a percentile score with respect to all X-ray entries followed by that with respect to entries of similar

resolution.

The Analysed column shows the number of residues for which the sidechain conformation was analysed, and the total number of residues.

Mol	Chain	Analysed	Rotameric	Outliers	Percentiles	
1	A	468/468 (100%)	456 (97%)	12 (3%)	51	52

All (12) residues with a non-rotameric sidechain are listed below:

Mol	Chain	Res	Type
1	A	36	LEU
1	A	77[A]	THR
1	A	77[B]	THR
1	A	114	GLU
1	A	244	GLU
1	A	276	THR
1	A	425	GLU
1	A	443	LEU
1	A	466	GLU
1	A	533	PRO
1	A	545	THR
1	A	564	LEU

Some sidechains can be flipped to improve hydrogen bonding and reduce clashes. All (3) such sidechains are listed below:

Mol	Chain	Res	Type
1	A	35	ASN
1	A	37	GLN
1	A	549	HIS

5.3.3 RNA ⓘ

There are no RNA molecules in this entry.

5.4 Non-standard residues in protein, DNA, RNA chains ⓘ

There are no non-standard protein/DNA/RNA residues in this entry.

5.5 Carbohydrates ⓘ

There are no carbohydrates in this entry.

5.6 Ligand geometry

3 ligands are modelled in this entry.

In the following table, the Counts columns list the number of bonds (or angles) for which Mogul statistics could be retrieved, the number of bonds (or angles) that are observed in the model and the number of bonds (or angles) that are defined in the chemical component dictionary. The Link column lists molecule types, if any, to which the group is linked. The Z score for a bond length (or angle) is the number of standard deviations the observed value is removed from the expected value. A bond length (or angle) with $|Z| > 2$ is considered an outlier worth inspection. RMSZ is the root-mean-square of all Z scores of the bond lengths (or angles).

Mol	Type	Chain	Res	Link	Bond lengths			Bond angles		
					Counts	RMSZ	# $ Z > 2$	Counts	RMSZ	# $ Z > 2$
3	GOL	A	3500	-	5,5,5	0.56	0	5,5,5	1.06	1 (20%)
2	SAU	A	606	-	29,30,30	1.78	7 (24%)	43,46,46	1.72	9 (20%)
2	SAU	A	607	-	29,30,30	1.55	7 (24%)	43,46,46	2.53	18 (41%)

In the following table, the Chirals column lists the number of chiral outliers, the number of chiral centers analysed, the number of these observed in the model and the number defined in the chemical component dictionary. Similar counts are reported in the Torsion and Rings columns. '-' means no outliers of that kind were identified.

Mol	Type	Chain	Res	Link	Chirals	Torsions	Rings
3	GOL	A	3500	-	-	0/4/4/4	0/0/0/0
2	SAU	A	606	-	-	0/0/12/12	0/6/6/6
2	SAU	A	607	-	-	0/0/12/12	0/6/6/6

All (14) bond length outliers are listed below:

Mol	Chain	Res	Type	Atoms	Z	Observed(Å)	Ideal(Å)
2	A	607	SAU	C15-C14	-2.18	1.38	1.45
2	A	606	SAU	O2-C1	2.02	1.46	1.43
2	A	607	SAU	C9-C8	2.12	1.41	1.35
2	A	606	SAU	O1-C1	2.23	1.47	1.43
2	A	607	SAU	O2-C1	2.28	1.47	1.43
2	A	606	SAU	O4-C23	2.33	1.47	1.43
2	A	607	SAU	O4-C23	2.38	1.47	1.43
2	A	606	SAU	C4-C2	2.51	1.41	1.36
2	A	606	SAU	O3-C23	2.77	1.48	1.43
2	A	607	SAU	C4-C2	2.92	1.41	1.36
2	A	606	SAU	C10-N	3.02	1.45	1.39
2	A	607	SAU	C10-N	3.08	1.45	1.39
2	A	607	SAU	C12-N	3.22	1.39	1.34
2	A	606	SAU	C12-N	5.66	1.43	1.34

All (28) bond angle outliers are listed below:

Mol	Chain	Res	Type	Atoms	Z	Observed(°)	Ideal(°)
2	A	607	SAU	C23-O4-C21	-4.83	98.91	105.09
2	A	606	SAU	O4-C23-O3	-4.71	100.75	108.10
2	A	607	SAU	O2-C1-O1	-4.53	101.03	108.10
2	A	607	SAU	O4-C23-O3	-4.30	101.38	108.10
2	A	607	SAU	C12-C13-C21	-4.22	118.29	121.77
2	A	607	SAU	O2-C2-C3	-3.95	105.26	109.78
2	A	607	SAU	C12-N-C10	-3.89	118.11	121.73
2	A	607	SAU	O3-C20-C21	-3.49	106.38	109.72
2	A	607	SAU	C7-C6-C10	-2.79	119.17	124.07
2	A	607	SAU	C7-C3-C2	-2.52	118.46	121.75
2	A	606	SAU	C4-C2-C3	-2.45	118.55	121.75
2	A	607	SAU	C23-O3-C20	-2.43	102.09	105.35
2	A	606	SAU	O3-C20-C21	-2.43	107.40	109.72
2	A	606	SAU	C12-N-C10	-2.42	119.48	121.73
2	A	607	SAU	C13-C12-N	-2.35	120.12	121.90
2	A	607	SAU	C9-C15-C14	-2.07	118.41	122.42
2	A	606	SAU	O2-C1-O1	-2.06	104.88	108.10
2	A	607	SAU	O3-C20-C19	2.04	131.31	127.86
3	A	3500	GOL	O2-C2-C3	2.07	118.59	108.84
2	A	606	SAU	O3-C20-C19	2.56	132.18	127.86
2	A	606	SAU	O1-C3-C7	2.82	130.56	128.13
2	A	607	SAU	C18-C14-C13	3.09	121.77	117.75
2	A	606	SAU	O4-C21-C13	3.75	132.30	122.63
2	A	606	SAU	O2-C2-C4	3.76	131.37	128.13
2	A	607	SAU	C9-C15-C10	3.78	121.88	117.83
2	A	607	SAU	O4-C21-C13	3.90	132.70	122.63
2	A	607	SAU	O1-C3-C7	4.11	131.67	128.13
2	A	607	SAU	O2-C2-C4	5.63	132.98	128.13

There are no chirality outliers.

There are no torsion outliers.

There are no ring outliers.

2 monomers are involved in 10 short contacts:

Mol	Chain	Res	Type	Clashes	Symm-Clashes
2	A	606	SAU	4	0
2	A	607	SAU	6	0

5.7 Other polymers [i](#)

There are no such residues in this entry.

5.8 Polymer linkage issues [i](#)

There are no chain breaks in this entry.

6 Fit of model and data [i](#)

6.1 Protein, DNA and RNA chains [i](#)

In the following table, the column labelled ‘#RSRZ> 2’ contains the number (and percentage) of RSRZ outliers, followed by percent RSRZ outliers for the chain as percentile scores relative to all X-ray entries and entries of similar resolution. The OWAB column contains the minimum, median, 95th percentile and maximum values of the occupancy-weighted average B-factor per residue. The column labelled ‘Q< 0.9’ lists the number of (and percentage) of residues with an average occupancy less than 0.9.

Mol	Chain	Analysed	<RSRZ>	#RSRZ>2	OWAB(Å ²)	Q<0.9
1	A	570/584 (97%)	-0.43	10 (1%) 69 68	12, 18, 32, 63	0

All (10) RSRZ outliers are listed below:

Mol	Chain	Res	Type	RSRZ
1	A	590	GLY	5.2
1	A	426	ASN	4.6
1	A	425	GLU	4.1
1	A	93[A]	THR	3.0
1	A	428	GLU	2.7
1	A	245	TYR	2.7
1	A	427	GLY	2.5
1	A	591	VAL	2.4
1	A	515	ASN	2.1
1	A	589	GLY	2.0

6.2 Non-standard residues in protein, DNA, RNA chains [i](#)

There are no non-standard protein/DNA/RNA residues in this entry.

6.3 Carbohydrates [i](#)

There are no carbohydrates in this entry.

6.4 Ligands [i](#)

In the following table, the Atoms column lists the number of modelled atoms in the group and the number defined in the chemical component dictionary. LLDF column lists the quality of electron density of the group with respect to its neighbouring residues in protein, DNA or RNA chains. The B-factors column lists the minimum, median, 95th percentile and maximum values of B factors

of atoms in the group. The column labelled 'Q< 0.9' lists the number of atoms with occupancy less than 0.9.

Mol	Type	Chain	Res	Atoms	RSCC	RSR	LLDF	B-factors(\AA^2)	Q<0.9
2	SAU	A	606	25/25	0.70	0.28	9.19	54,62,72,74	0
2	SAU	A	607	25/25	0.81	0.27	6.64	32,43,58,60	0
3	GOL	A	3500	6/6	0.96	0.08	-0.65	17,21,29,36	0

6.5 Other polymers [i](#)

There are no such residues in this entry.