



Full wwPDB X-ray Structure Validation Report ⓘ

Oct 2, 2017 – 04:41 AM EDT

PDB ID : 3ASQ
Title : Crystal structure of P domain from Norovirus Funabashi258 stain in the complex with H-antigen
Authors : Kubota, T.; Kumagai, A.; Itoh, H.; Furukawa, S.; Narimatsu, H.; Wakita, T.; Ishii, K.; Takeda, N.; Someya, Y.; Shirato, H.
Deposited on : unknown
Resolution : 1.60 Å(reported)

This is a Full wwPDB X-ray Structure Validation Report for a publicly released PDB entry.

We welcome your comments at validation@mail.wwpdb.org

A user guide is available at

<http://wwpdb.org/validation/2016/XrayValidationReportHelp>

with specific help available everywhere you see the ⓘ symbol.

The following versions of software and data (see [references ⓘ](#)) were used in the production of this report:

MolProbity	:	4.02b-467
Mogul	:	1.7.2 (RC1), CSD as538be (2017)
Xtriage (Phenix)	:	1.9-1692
EDS	:	rb-20030345
Percentile statistics	:	20161228.v01 (using entries in the PDB archive December 28th 2016)
Refmac	:	5.8.0135
CCP4	:	6.5.0
Ideal geometry (proteins)	:	Engh & Huber (2001)
Ideal geometry (DNA, RNA)	:	Parkinson et al. (1996)
Validation Pipeline (wwPDB-VP)	:	rb-20030345

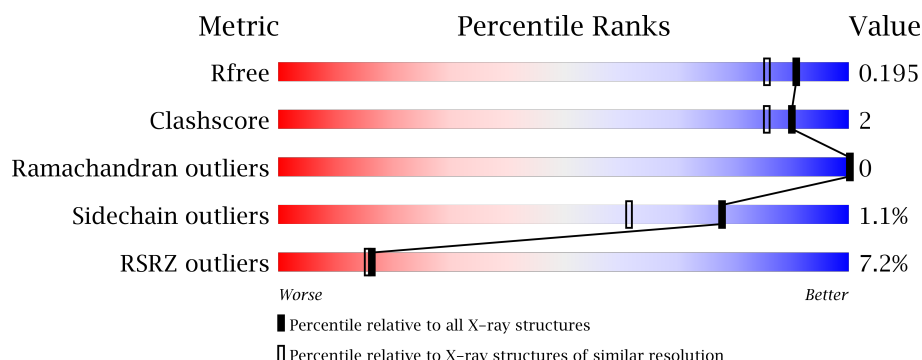
1 Overall quality at a glance

The following experimental techniques were used to determine the structure:

X-RAY DIFFRACTION

The reported resolution of this entry is 1.60 Å.

Percentile scores (ranging between 0-100) for global validation metrics of the entry are shown in the following graphic. The table shows the number of entries on which the scores are based.



Metric	Whole archive (#Entries)	Similar resolution (#Entries, resolution range(Å))
R_{free}	100719	2696 (1.60-1.60)
Clashscore	112137	2967 (1.60-1.60)
Ramachandran outliers	110173	2887 (1.60-1.60)
Sidechain outliers	110143	2886 (1.60-1.60)
RSRZ outliers	101464	2714 (1.60-1.60)

The table below summarises the geometric issues observed across the polymeric chains and their fit to the electron density. The red, orange, yellow and green segments on the lower bar indicate the fraction of residues that contain outliers for ≥ 3 , 2, 1 and 0 types of geometric quality criteria. A grey segment represents the fraction of residues that are not modelled. The numeric value for each fraction is indicated below the corresponding segment, with a dot representing fractions $\leq 5\%$. The upper red bar (where present) indicates the fraction of residues that have poor fit to the electron density. The numeric value is given above the bar.

Mol	Chain	Length	Quality of chain
1	A	326	<div> <div>7%</div> <div> <div></div> <div>88%</div> <div>7%</div> <div>5%</div> </div> </div>
1	B	326	<div> <div>6%</div> <div> <div></div> <div>88%</div> <div>• • 7%</div> </div> </div>

2 Entry composition

There are 7 unique types of molecules in this entry. The entry contains 5230 atoms, of which 0 are hydrogens and 0 are deuteriums.

In the tables below, the ZeroOcc column contains the number of atoms modelled with zero occupancy, the AltConf column contains the number of residues with at least one atom in alternate conformation and the Trace column contains the number of residues modelled with at most 2 atoms.

- Molecule 1 is a protein called Capsid protein.

Mol	Chain	Residues	Atoms					ZeroOcc	AltConf	Trace
1	A	311	Total	C	N	O	S	0	2	0
			2392	1530	403	450	9			
1	B	302	Total	C	N	O	S	0	3	0
			2335	1496	394	436	9			

There are 10 discrepancies between the modelled and reference sequences:

Chain	Residue	Modelled	Actual	Comment	Reference
A	216	GLY	-	EXPRESSION TAG	UNP Q8JW44
A	217	PRO	-	EXPRESSION TAG	UNP Q8JW44
A	218	LEU	-	EXPRESSION TAG	UNP Q8JW44
A	219	GLY	-	EXPRESSION TAG	UNP Q8JW44
A	220	SER	-	EXPRESSION TAG	UNP Q8JW44
B	216	GLY	-	EXPRESSION TAG	UNP Q8JW44
B	217	PRO	-	EXPRESSION TAG	UNP Q8JW44
B	218	LEU	-	EXPRESSION TAG	UNP Q8JW44
B	219	GLY	-	EXPRESSION TAG	UNP Q8JW44
B	220	SER	-	EXPRESSION TAG	UNP Q8JW44

- Molecule 2 is SODIUM ION (three-letter code: NA) (formula: Na).

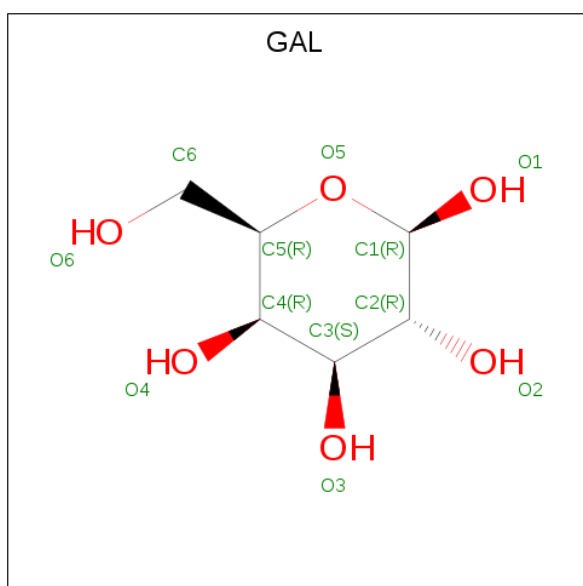
Mol	Chain	Residues	Atoms		ZeroOcc	AltConf
2	B	1	Total	Na	0	0
			1	1		
2	A	1	Total	Na	0	0
			1	1		

- Molecule 3 is N-ACETYL-D-GLUCOSAMINE (three-letter code: NAG) (formula: C₈H₁₅NO₆).



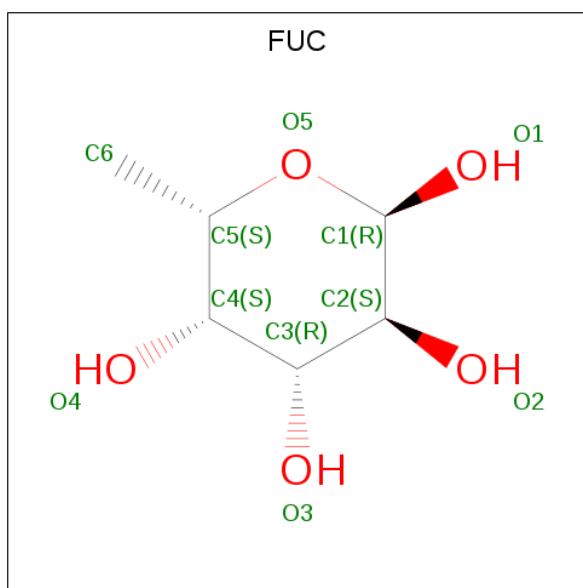
Mol	Chain	Residues	Atoms				ZeroOcc	AltConf
3	A	1	Total	C	N	O	0	0
			14	8	1	5		
3	B	1	Total	C	N	O	0	0
			14	8	1	5		

- Molecule 4 is BETA-D-GALACTOSE (three-letter code: GAL) (formula: $C_6H_{12}O_6$).



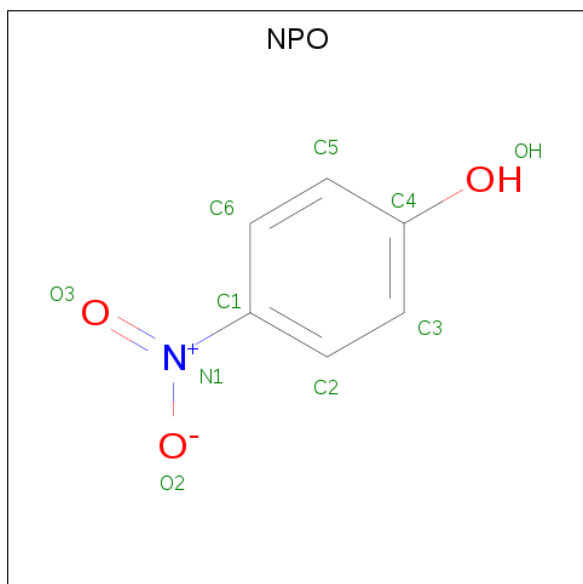
Mol	Chain	Residues	Atoms			ZeroOcc	AltConf
4	A	1	Total	C	O	0	0
			11	6	5		
4	B	1	Total	C	O	0	0
			11	6	5		

- Molecule 5 is ALPHA-L-FUCOSE (three-letter code: FUC) (formula: $C_6H_{12}O_5$).



Mol	Chain	Residues	Atoms			ZeroOcc	AltConf
5	A	1	Total	C	O	0	0
			10	6	4		
5	B	1	Total	C	O	0	0
			10	6	4		

- Molecule 6 is P-NITROPHENOL (three-letter code: NPO) (formula: $C_6H_5NO_3$).



Mol	Chain	Residues	Atoms				ZeroOcc	AltConf
6	A	1	Total	C	N	O	0	0
			10	6	1	3		

Continued on next page...

Continued from previous page...

Mol	Chain	Residues	Atoms				ZeroOcc	AltConf
6	B	1	Total	C	N	O	0	0
			10	6	1	3		

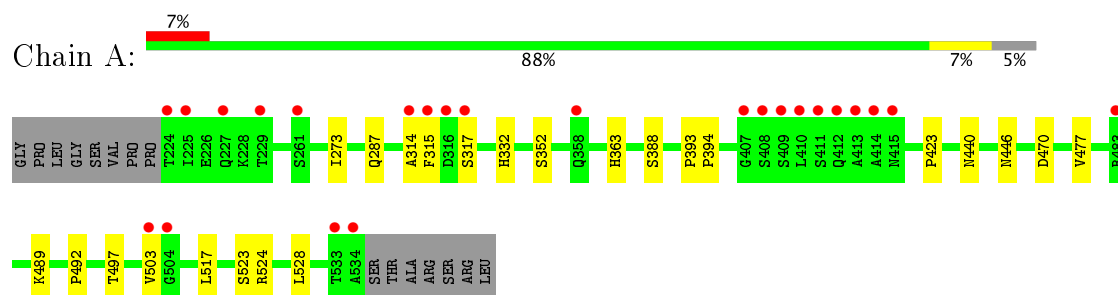
- Molecule 7 is water.

Mol	Chain	Residues	Atoms		ZeroOcc	AltConf
7	A	207	Total	O	0	0
			207	207		
7	B	204	Total	O	0	0
			204	204		

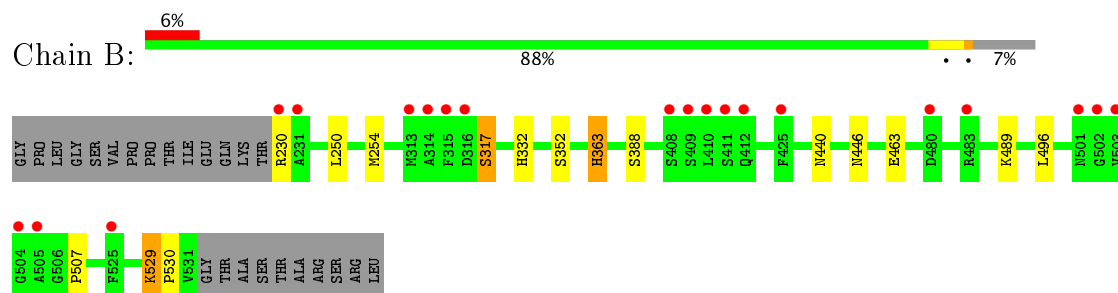
3 Residue-property plots [i](#)

These plots are drawn for all protein, RNA and DNA chains in the entry. The first graphic for a chain summarises the proportions of the various outlier classes displayed in the second graphic. The second graphic shows the sequence view annotated by issues in geometry and electron density. Residues are color-coded according to the number of geometric quality criteria for which they contain at least one outlier: green = 0, yellow = 1, orange = 2 and red = 3 or more. A red dot above a residue indicates a poor fit to the electron density ($RSRZ > 2$). Stretches of 2 or more consecutive residues without any outlier are shown as a green connector. Residues present in the sample, but not in the model, are shown in grey.

• Molecule 1: Capsid protein



• Molecule 1: Capsid protein



4 Data and refinement statistics

Property	Value	Source
Space group	P 31	Depositor
Cell constants a, b, c, α , β , γ	74.69Å 74.69Å 107.11Å 90.00° 90.00° 120.00°	Depositor
Resolution (Å)	35.26 – 1.60 35.26 – 1.60	Depositor EDS
% Data completeness (in resolution range)	100.0 (35.26-1.60) 100.0 (35.26-1.60)	Depositor EDS
R_{merge}	0.08	Depositor
R_{sym}	(Not available)	Depositor
$\langle I/\sigma(I) \rangle$ ¹	7.20 (at 1.60Å)	Xtriage
Refinement program	REFMAC 5.5.0109	Depositor
R, R_{free}	0.178 , 0.194 0.179 , 0.195	Depositor DCC
R_{free} test set	4420 reflections (5.28%)	DCC
Wilson B-factor (Å ²)	15.2	Xtriage
Anisotropy	0.017	Xtriage
Bulk solvent k_{sol} (e/Å ³), B_{sol} (Å ²)	0.40 , 51.4	EDS
L-test for twinning ²	$\langle L \rangle = 0.50$, $\langle L^2 \rangle = 0.33$	Xtriage
Estimated twinning fraction	0.006 for -h,-k,l 0.027 for h,-h-k,-l 0.015 for -k,-h,-l	Xtriage
F_o, F_c correlation	0.96	EDS
Total number of atoms	5230	wwPDB-VP
Average B, all atoms (Å ²)	16.0	wwPDB-VP

Xtriage's analysis on translational NCS is as follows: *The largest off-origin peak in the Patterson function is 4.07% of the height of the origin peak. No significant pseudotranslation is detected.*

¹Intensities estimated from amplitudes.

²Theoretical values of $\langle |L| \rangle$, $\langle L^2 \rangle$ for acentric reflections are 0.5, 0.333 respectively for untwinned datasets, and 0.375, 0.2 for perfectly twinned datasets.

5 Model quality

5.1 Standard geometry

Bond lengths and bond angles in the following residue types are not validated in this section: NA, NPO, GAL, NAG, FUC

The Z score for a bond length (or angle) is the number of standard deviations the observed value is removed from the expected value. A bond length (or angle) with $|Z| > 5$ is considered an outlier worth inspection. RMSZ is the root-mean-square of all Z scores of the bond lengths (or angles).

Mol	Chain	Bond lengths		Bond angles	
		RMSZ	$\# Z > 5$	RMSZ	$\# Z > 5$
1	A	0.35	0/2471	0.51	0/3383
1	B	0.36	0/2415	0.52	0/3307
All	All	0.35	0/4886	0.52	0/6690

There are no bond length outliers.

There are no bond angle outliers.

There are no chirality outliers.

There are no planarity outliers.

5.2 Too-close contacts

In the following table, the Non-H and H(model) columns list the number of non-hydrogen atoms and hydrogen atoms in the chain respectively. The H(added) column lists the number of hydrogen atoms added and optimized by MolProbity. The Clashes column lists the number of clashes within the asymmetric unit, whereas Symm-Clashes lists symmetry related clashes.

Mol	Chain	Non-H	H(model)	H(added)	Clashes	Symm-Clashes
1	A	2392	0	2322	12	0
1	B	2335	0	2260	9	0
2	A	1	0	0	0	0
2	B	1	0	0	0	0
3	A	14	0	12	0	0
3	B	14	0	12	0	0
4	A	11	0	9	0	0
4	B	11	0	9	0	0
5	A	10	0	10	0	0
5	B	10	0	10	0	0
6	A	10	0	4	0	0

Continued on next page...

Continued from previous page...

Mol	Chain	Non-H	H(model)	H(added)	Clashes	Symm-Clashes
6	B	10	0	4	0	0
7	A	207	0	0	0	0
7	B	204	0	0	0	0
All	All	5230	0	4652	20	0

The all-atom clashscore is defined as the number of clashes found per 1000 atoms (including hydrogen atoms). The all-atom clashscore for this structure is 2.

All (20) close contacts within the same asymmetric unit are listed below, sorted by their clash magnitude.

Atom-1	Atom-2	Interatomic distance (Å)	Clash overlap (Å)
1:B:254:MET:HG2	1:B:507:PRO:HB2	1.74	0.67
1:A:332:HIS:HE1	1:A:388:SER:OG	1.80	0.64
1:B:440:ASN:HD22	1:B:446:ASN:ND2	1.96	0.63
1:B:332:HIS:HE1	1:B:388:SER:OG	1.83	0.61
1:A:440:ASN:HD22	1:A:446:ASN:ND2	2.04	0.56
1:B:529:LYS:HE2	1:B:530:PRO:HD2	1.87	0.54
1:A:315:PHE:HA	1:A:363:HIS:CE1	2.42	0.54
1:A:332:HIS:HD2	1:A:352:SER:OG	1.93	0.51
1:B:230:ARG:HD3	1:B:463:GLU:OE1	2.10	0.51
1:B:332:HIS:HD2	1:B:352:SER:OG	1.94	0.50
1:A:423:PRO:HG3	1:A:497:THR:HG21	1.97	0.46
1:A:470:ASP:OD2	1:A:524:ARG:HG2	2.15	0.46
1:A:273:ILE:HG12	1:A:492:PRO:HA	1.99	0.45
1:A:477:VAL:HG21	1:A:517:LEU:HD12	1.99	0.45
1:A:314:ALA:O	1:A:315:PHE:HB2	2.17	0.44
1:B:317:SER:O	1:B:363[B]:HIS:HD2	2.01	0.44
1:B:489:LYS:O	1:B:496:LEU:HD23	2.19	0.42
1:A:489:LYS:HG3	1:A:528:LEU:HD21	2.03	0.41
1:A:393:PRO:HA	1:A:394:PRO:HD3	1.97	0.41
1:A:287:GLN:HG3	1:B:250:LEU:HD11	2.03	0.40

There are no symmetry-related clashes.

5.3 Torsion angles ⓘ

5.3.1 Protein backbone ⓘ

In the following table, the Percentiles column shows the percent Ramachandran outliers of the chain as a percentile score with respect to all X-ray entries followed by that with respect to entries of similar resolution.

The Analysed column shows the number of residues for which the backbone conformation was analysed, and the total number of residues.

Mol	Chain	Analysed	Favoured	Allowed	Outliers	Percentiles	
1	A	311/326 (95%)	308 (99%)	3 (1%)	0	100	100
1	B	303/326 (93%)	298 (98%)	5 (2%)	0	100	100
All	All	614/652 (94%)	606 (99%)	8 (1%)	0	100	100

There are no Ramachandran outliers to report.

5.3.2 Protein sidechains ⓘ

In the following table, the Percentiles column shows the percent sidechain outliers of the chain as a percentile score with respect to all X-ray entries followed by that with respect to entries of similar resolution.

The Analysed column shows the number of residues for which the sidechain conformation was analysed, and the total number of residues.

Mol	Chain	Analysed	Rotameric	Outliers	Percentiles	
1	A	267/277 (96%)	264 (99%)	3 (1%)	78	61
1	B	261/277 (94%)	257 (98%)	4 (2%)	70	48
All	All	528/554 (95%)	521 (99%)	7 (1%)	78	55

All (7) residues with a non-rotameric sidechain are listed below:

Mol	Chain	Res	Type
1	A	317	SER
1	A	503	VAL
1	A	523	SER
1	B	317	SER
1	B	363[A]	HIS
1	B	363[B]	HIS
1	B	529	LYS

Some sidechains can be flipped to improve hydrogen bonding and reduce clashes. All (9) such sidechains are listed below:

Mol	Chain	Res	Type
1	A	296	ASN
1	A	332	HIS
1	A	415	ASN

Continued on next page...

Continued from previous page...

Mol	Chain	Res	Type
1	A	446	ASN
1	B	296	ASN
1	B	332	HIS
1	B	415	ASN
1	B	446	ASN
1	B	527	GLN

5.3.3 RNA [i](#)

There are no RNA molecules in this entry.

5.4 Non-standard residues in protein, DNA, RNA chains [i](#)

There are no non-standard protein/DNA/RNA residues in this entry.

5.5 Carbohydrates [i](#)

There are no carbohydrates in this entry.

5.6 Ligand geometry [i](#)

Of 10 ligands modelled in this entry, 2 are monoatomic - leaving 8 for Mogul analysis.

In the following table, the Counts columns list the number of bonds (or angles) for which Mogul statistics could be retrieved, the number of bonds (or angles) that are observed in the model and the number of bonds (or angles) that are defined in the Chemical Component Dictionary. The Link column lists molecule types, if any, to which the group is linked. The Z score for a bond length (or angle) is the number of standard deviations the observed value is removed from the expected value. A bond length (or angle) with $|Z| > 2$ is considered an outlier worth inspection. RMSZ is the root-mean-square of all Z scores of the bond lengths (or angles).

Mol	Type	Chain	Res	Link	Bond lengths			Bond angles		
					Counts	RMSZ	$\# Z > 2$	Counts	RMSZ	$\# Z > 2$
6	NPO	A	1001	3	9,10,10	0.88	1 (11%)	11,13,13	0.41	0
3	NAG	A	1002	4,6	14,14,15	0.51	0	15,19,21	0.79	0
4	GAL	A	1003	3,5	11,11,12	0.59	0	13,15,17	0.55	0
5	FUC	A	1005	4	9,10,11	0.59	0	13,14,16	0.47	0
6	NPO	B	1001	3	9,10,10	0.89	1 (11%)	11,13,13	0.52	0
3	NAG	B	1002	4,6	14,14,15	0.48	0	15,19,21	0.68	0
4	GAL	B	1003	3,5	11,11,12	0.59	0	13,15,17	0.64	0
5	FUC	B	1005	4	9,10,11	0.61	0	13,14,16	0.41	0

In the following table, the Chirals column lists the number of chiral outliers, the number of chiral centers analysed, the number of these observed in the model and the number defined in the Chemical Component Dictionary. Similar counts are reported in the Torsion and Rings columns. '-' means no outliers of that kind were identified.

Mol	Type	Chain	Res	Link	Chirals	Torsions	Rings
6	NPO	A	1001	3	-	0/2/4/4	0/1/1/1
3	NAG	A	1002	4,6	-	0/6/23/26	0/1/1/1
4	GAL	A	1003	3,5	-	0/2/19/22	0/1/1/1
5	FUC	A	1005	4	-	0/0/17/20	0/1/1/1
6	NPO	B	1001	3	-	0/2/4/4	0/1/1/1
3	NAG	B	1002	4,6	-	0/6/23/26	0/1/1/1
4	GAL	B	1003	3,5	-	0/2/19/22	0/1/1/1
5	FUC	B	1005	4	-	0/0/17/20	0/1/1/1

All (2) bond length outliers are listed below:

Mol	Chain	Res	Type	Atoms	Z	Observed(Å)	Ideal(Å)
6	A	1001	NPO	C1-N1	-2.33	1.41	1.45
6	B	1001	NPO	C1-N1	-2.25	1.41	1.45

There are no bond angle outliers.

There are no chirality outliers.

There are no torsion outliers.

There are no ring outliers.

No monomer is involved in short contacts.

5.7 Other polymers [i](#)

There are no such residues in this entry.

5.8 Polymer linkage issues [i](#)

There are no chain breaks in this entry.

6 Fit of model and data ⓘ

6.1 Protein, DNA and RNA chains ⓘ

In the following table, the column labelled ‘#RSRZ> 2’ contains the number (and percentage) of RSRZ outliers, followed by percent RSRZ outliers for the chain as percentile scores relative to all X-ray entries and entries of similar resolution. The OWAB column contains the minimum, median, 95th percentile and maximum values of the occupancy-weighted average B-factor per residue. The column labelled ‘Q< 0.9’ lists the number of (and percentage) of residues with an average occupancy less than 0.9.

Mol	Chain	Analysed	<RSRZ>	#RSRZ>2	OWAB(Å ²)	Q<0.9
1	A	311/326 (95%)	0.16	24 (7%) 14 13	9, 15, 28, 40	0
1	B	302/326 (92%)	0.11	20 (6%) 19 18	9, 15, 29, 35	0
All	All	613/652 (94%)	0.13	44 (7%) 16 16	9, 15, 29, 40	0

All (44) RSRZ outliers are listed below:

Mol	Chain	Res	Type	RSRZ
1	A	315	PHE	14.1
1	A	410	LEU	12.7
1	B	315	PHE	10.5
1	B	410	LEU	10.4
1	A	409	SER	10.1
1	B	314	ALA	9.0
1	A	314	ALA	8.4
1	B	503	VAL	7.9
1	B	409	SER	7.9
1	A	225	ILE	7.2
1	A	412	GLN	7.0
1	A	411	SER	7.0
1	A	503	VAL	6.8
1	B	425	PHE	6.7
1	A	408	SER	6.4
1	A	504	GLY	6.1
1	B	412	GLN	5.3
1	A	414	ALA	5.2
1	B	525	PHE	5.2
1	B	504	GLY	5.0
1	B	313	MET	4.9
1	A	316	ASP	4.9
1	A	407	GLY	4.2
1	B	230	ARG	4.1

Continued on next page...

Continued from previous page...

Mol	Chain	Res	Type	RSRZ
1	A	413	ALA	4.0
1	B	411	SER	3.8
1	A	224	THR	3.6
1	B	316	ASP	3.4
1	A	415	ASN	3.3
1	A	261	SER	3.3
1	B	501	ASN	3.2
1	B	408	SER	3.2
1	A	317	SER	3.0
1	B	480	ASP	2.9
1	A	358	GLN	2.9
1	B	483	ARG	2.7
1	B	505	ALA	2.7
1	B	502	GLY	2.5
1	A	229	THR	2.5
1	A	534	ALA	2.4
1	A	227	GLN	2.4
1	A	483	ARG	2.4
1	B	231	ALA	2.2
1	A	533	THR	2.1

6.2 Non-standard residues in protein, DNA, RNA chains [i](#)

There are no non-standard protein/DNA/RNA residues in this entry.

6.3 Carbohydrates [i](#)

There are no carbohydrates in this entry.

6.4 Ligands [i](#)

In the following table, the Atoms column lists the number of modelled atoms in the group and the number defined in the chemical component dictionary. LLDF column lists the quality of electron density of the group with respect to its neighbouring residues in protein, DNA or RNA chains. The B-factors column lists the minimum, median, 95th percentile and maximum values of B factors of atoms in the group. The column labelled 'Q< 0.9' lists the number of atoms with occupancy less than 0.9.

Mol	Type	Chain	Res	Atoms	RSCC	RSR	LLDF	B-factors(Å ²)	Q<0.9
5	FUC	B	1005	10/11	0.96	0.06	0.33	13,15,17,18	0

Continued on next page...

Continued from previous page...

Mol	Type	Chain	Res	Atoms	RSCC	RSR	LLDF	B-factors(\AA^2)	Q<0.9
4	GAL	B	1003	11/12	0.96	0.06	-0.35	13,14,16,18	0
5	FUC	A	1005	10/11	0.97	0.07	-0.43	12,13,14,14	0
2	NA	A	701	1/1	0.91	0.09	-0.49	32,32,32,32	0
4	GAL	A	1003	11/12	0.98	0.05	-0.65	12,12,13,15	0
2	NA	B	701	1/1	0.98	0.07	-0.75	21,21,21,21	0
3	NAG	A	1002	14/15	0.96	0.06	-	12,13,16,17	0
6	NPO	A	1001	10/10	0.93	0.12	-	16,20,23,24	0
3	NAG	B	1002	14/15	0.92	0.11	-	16,19,20,23	0
6	NPO	B	1001	10/10	0.67	0.33	-	25,31,34,34	0

6.5 Other polymers [i](#)

There are no such residues in this entry.