



Full wwPDB X-ray Structure Validation Report ⓘ

Feb 28, 2018 – 09:49 AM EST

PDB ID : 1AU2
Title : CRYSTAL STRUCTURE OF THE CYSTEINE PROTEASE HUMAN CATHEPSIN K IN COMPLEX WITH A COVALENT PROPANONE INHIBITOR
Authors : Zhao, B.; Smith, W.W.; Janson, C.A.; Abdel-Meguid, S.S.
Deposited on : 1997-09-10
Resolution : 2.60 Å(reported)

This is a Full wwPDB X-ray Structure Validation Report for a publicly released PDB entry.

We welcome your comments at validation@mail.wwpdb.org

A user guide is available at

<http://wwpdb.org/validation/2016/XrayValidationReportHelp>

with specific help available everywhere you see the ⓘ symbol.

The following versions of software and data (see [references ⓘ](#)) were used in the production of this report:

MolProbity : 4.02b-467
Mogul : 1.7.2 (RC1), CSD as538be (2017)
Xtriage (Phenix) : **NOT EXECUTED**
EDS : **NOT EXECUTED**
Percentile statistics : 20161228.v01 (using entries in the PDB archive December 28th 2016)
Ideal geometry (proteins) : Engh & Huber (2001)
Ideal geometry (DNA, RNA) : Parkinson et al. (1996)
Validation Pipeline (wwPDB-VP) : rb-20030736

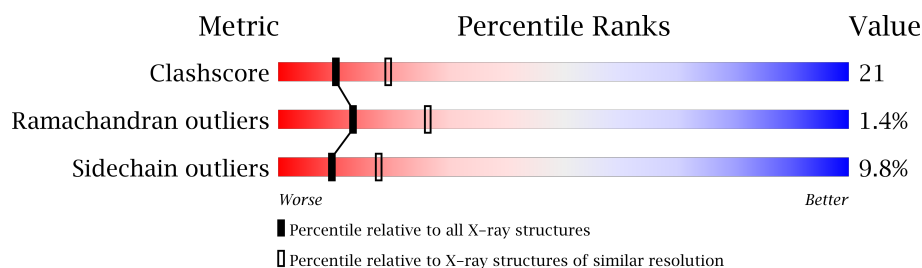
1 Overall quality at a glance

The following experimental techniques were used to determine the structure:

X-RAY DIFFRACTION

The reported resolution of this entry is 2.60 Å.

Percentile scores (ranging between 0-100) for global validation metrics of the entry are shown in the following graphic. The table shows the number of entries on which the scores are based.



Metric	Whole archive (#Entries)	Similar resolution (#Entries, resolution range(Å))
Clashscore	112137	2895 (2.60-2.60)
Ramachandran outliers	110173	2848 (2.60-2.60)
Sidechain outliers	110143	2848 (2.60-2.60)

The table below summarises the geometric issues observed across the polymeric chains and their fit to the electron density. The red, orange, yellow and green segments on the lower bar indicate the fraction of residues that contain outliers for ≥ 3 , 2, 1 and 0 types of geometric quality criteria. A grey segment represents the fraction of residues that are not modelled. The numeric value for each fraction is indicated below the corresponding segment, with a dot representing fractions $\leq 5\%$. The upper red bar (where present) indicates the fraction of residues that have poor fit to the electron density. The numeric value is given above the bar.

Note EDS was not executed.

Mol	Chain	Length	Quality of chain
1	A	215	

2 Entry composition [i](#)

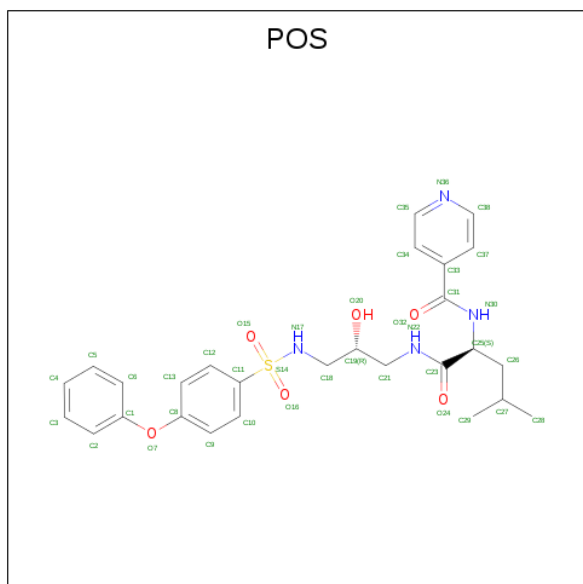
There are 3 unique types of molecules in this entry. The entry contains 1749 atoms, of which 0 are hydrogens and 0 are deuteriums.

In the tables below, the ZeroOcc column contains the number of atoms modelled with zero occupancy, the AltConf column contains the number of residues with at least one atom in alternate conformation and the Trace column contains the number of residues modelled with at most 2 atoms.

- Molecule 1 is a protein called CATHEPSIN K.

Mol	Chain	Residues	Atoms					ZeroOcc	AltConf	Trace
1	A	215	Total	C	N	O	S	0	0	0
			1649	1030	291	316	12			

- Molecule 2 is 1-[[[(4-PHENOXYPHENYL)SULFONYL]AMINO]-3-[[N/N-(4-PYRIDINYLCARBONYL)-L-LEUCYL]AMINO]-2-PROPANOL (three-letter code: POS) (formula: C₂₇H₃₂N₄O₆S).



Mol	Chain	Residues	Atoms					ZeroOcc	AltConf
2	A	1	Total	C	N	O	S	0	0
			38	27	4	6	1		

- Molecule 3 is water.

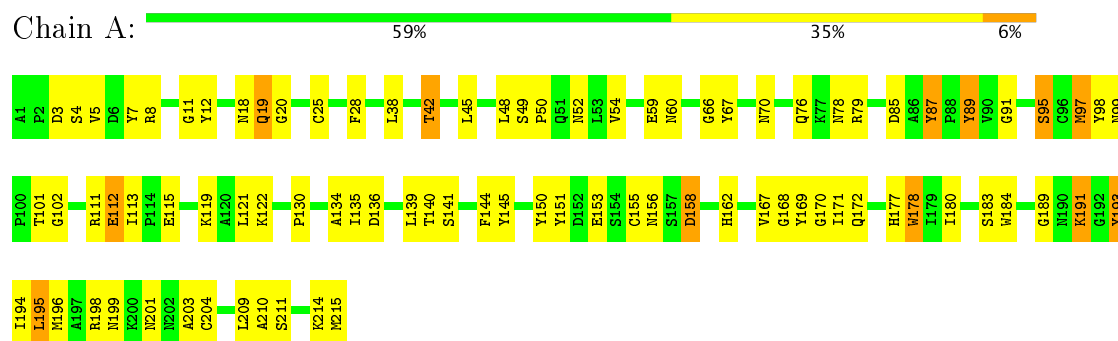
Mol	Chain	Residues	Atoms		ZeroOcc	AltConf
3	A	62	Total	O	0	0
			62	62		

3 Residue-property plots [i](#)

These plots are drawn for all protein, RNA and DNA chains in the entry. The first graphic for a chain summarises the proportions of the various outlier classes displayed in the second graphic. The second graphic shows the sequence view annotated by issues in geometry and electron density. Residues are color-coded according to the number of geometric quality criteria for which they contain at least one outlier: green = 0, yellow = 1, orange = 2 and red = 3 or more. A red dot above a residue indicates a poor fit to the electron density ($\text{RSRZ} > 2$). Stretches of 2 or more consecutive residues without any outlier are shown as a green connector. Residues present in the sample, but not in the model, are shown in grey.

Note EDS was not executed.

• Molecule 1: CATHEPSIN K



4 Data and refinement statistics

Xtriage (Phenix) and EDS were not executed - this section is therefore incomplete.

Property	Value	Source
Space group	P 43 21 2	Depositor
Cell constants a, b, c, α , β , γ	58.24Å 58.24Å 131.70Å 90.00° 90.00° 90.00°	Depositor
Resolution (Å)	8.00 – 2.60	Depositor
% Data completeness (in resolution range)	79.0 (8.00-2.60)	Depositor
R_{merge}	0.09	Depositor
R_{sym}	0.09	Depositor
Refinement program	X-PLOR 3.1	Depositor
R, R_{free}	0.240 , 0.333	Depositor
Estimated twinning fraction	No twinning to report.	Xtriage
Total number of atoms	1749	wwPDB-VP
Average B, all atoms (Å ²)	15.0	wwPDB-VP

5 Model quality

5.1 Standard geometry

Bond lengths and bond angles in the following residue types are not validated in this section: POS

The Z score for a bond length (or angle) is the number of standard deviations the observed value is removed from the expected value. A bond length (or angle) with $|Z| > 5$ is considered an outlier worth inspection. RMSZ is the root-mean-square of all Z scores of the bond lengths (or angles).

Mol	Chain	Bond lengths		Bond angles	
		RMSZ	$\# Z > 5$	RMSZ	$\# Z > 5$
1	A	1.04	13/1684 (0.8%)	0.95	3/2270 (0.1%)

All (13) bond length outliers are listed below:

Mol	Chain	Res	Type	Atoms	Z	Observed(Å)	Ideal(Å)
1	A	89	TYR	CE1-CZ	-9.40	1.26	1.38
1	A	89	TYR	CE2-CZ	-8.35	1.27	1.38
1	A	150	TYR	CE2-CZ	8.22	1.49	1.38
1	A	150	TYR	CE1-CZ	7.53	1.48	1.38
1	A	89	TYR	CG-CD2	-7.15	1.29	1.39
1	A	178	TRP	CZ3-CH2	6.46	1.50	1.40
1	A	151	TYR	CE2-CZ	-6.16	1.30	1.38
1	A	150	TYR	CG-CD1	5.46	1.46	1.39
1	A	7	TYR	CE1-CZ	-5.44	1.31	1.38
1	A	151	TYR	CE1-CZ	-5.36	1.31	1.38
1	A	7	TYR	CE2-CZ	-5.29	1.31	1.38
1	A	193	TYR	CE1-CZ	-5.12	1.31	1.38
1	A	28	PHE	CE1-CZ	5.01	1.46	1.37

All (3) bond angle outliers are listed below:

Mol	Chain	Res	Type	Atoms	Z	Observed($^{\circ}$)	Ideal($^{\circ}$)
1	A	151	TYR	CD1-CE1-CZ	6.34	125.51	119.80
1	A	89	TYR	CZ-CE2-CD2	6.01	125.21	119.80
1	A	150	TYR	CB-CG-CD2	-5.78	117.53	121.00

There are no chirality outliers.

There are no planarity outliers.

5.2 Too-close contacts ⓘ

In the following table, the Non-H and H(model) columns list the number of non-hydrogen atoms and hydrogen atoms in the chain respectively. The H(added) column lists the number of hydrogen atoms added and optimized by MolProbity. The Clashes column lists the number of clashes within the asymmetric unit, whereas Symm-Clashes lists symmetry related clashes.

Mol	Chain	Non-H	H(model)	H(added)	Clashes	Symm-Clashes
1	A	1649	0	1595	69	0
2	A	38	0	31	17	0
3	A	62	0	0	3	0
All	All	1749	0	1626	70	0

The all-atom clashscore is defined as the number of clashes found per 1000 atoms (including hydrogen atoms). The all-atom clashscore for this structure is 21.

All (70) close contacts within the same asymmetric unit are listed below, sorted by their clash magnitude.

Atom-1	Atom-2	Interatomic distance (Å)	Clash overlap (Å)
1:A:191:LYS:HZ3	1:A:191:LYS:H	1.27	0.81
1:A:139:LEU:HD11	1:A:155:CYS:HA	1.68	0.74
1:A:66:GLY:O	2:A:300:POS:H292	1.89	0.73
1:A:134:ALA:HB2	2:A:300:POS:H283	1.70	0.71
1:A:113:ILE:HD13	1:A:210:ALA:CB	2.23	0.68
1:A:191:LYS:HA	1:A:191:LYS:HZ2	1.59	0.68
1:A:112:GLU:HG2	1:A:211:SER:HB3	1.78	0.65
1:A:162:HIS:CE1	2:A:300:POS:H10	2.32	0.64
1:A:136:ASP:HB3	1:A:155:CYS:SG	2.38	0.63
1:A:198:ARG:O	1:A:199:ASN:HB2	1.99	0.63
1:A:38:LEU:O	1:A:42:THR:HB	1.99	0.63
1:A:171:ILE:HG22	1:A:172:GLN:H	1.65	0.62
1:A:145:TYR:O	1:A:189:GLY:HA2	2.03	0.59
1:A:59:GLU:C	1:A:60:ASN:HD22	2.06	0.59
1:A:119:LYS:HD2	1:A:122:LYS:HZ1	1.66	0.59
1:A:8:ARG:HD3	1:A:193:TYR:CE2	2.38	0.58
1:A:19:GLN:CD	2:A:300:POS:H9	2.24	0.57
1:A:180:ILE:HB	1:A:194:ILE:HG23	1.87	0.57
1:A:184:TRP:HE1	2:A:300:POS:C9	2.18	0.56
1:A:191:LYS:NZ	1:A:191:LYS:H	2.01	0.56
1:A:177:HIS:CD2	1:A:195:LEU:HG	2.42	0.55
1:A:19:GLN:NE2	2:A:300:POS:H9	2.21	0.55
1:A:99:ASN:OD1	1:A:101:THR:HB	2.07	0.55
1:A:113:ILE:N	1:A:113:ILE:HD12	2.22	0.54

Continued on next page...

Continued from previous page...

Atom-1	Atom-2	Interatomic distance (Å)	Clash overlap (Å)
1:A:141:SER:HA	1:A:144:PHE:CZ	2.42	0.54
1:A:209:LEU:HD23	2:A:300:POS:H281	1.88	0.54
1:A:113:ILE:HD13	1:A:210:ALA:HB3	1.90	0.54
1:A:113:ILE:HD13	1:A:210:ALA:HB1	1.89	0.54
1:A:191:LYS:HA	1:A:191:LYS:NZ	2.21	0.53
1:A:134:ALA:CB	2:A:300:POS:H283	2.39	0.53
1:A:111:ARG:HG3	1:A:214:LYS:HE2	1.92	0.51
2:A:300:POS:H293	2:A:300:POS:N30	2.27	0.49
1:A:162:HIS:ND1	2:A:300:POS:N17	2.60	0.49
1:A:87:TYR:OH	1:A:97:MET:HG3	2.12	0.48
1:A:134:ALA:HB2	2:A:300:POS:C28	2.41	0.48
1:A:99:ASN:OD1	1:A:102:GLY:N	2.47	0.48
1:A:95:SER:O	1:A:97:MET:HG2	2.14	0.47
1:A:20:GLY:O	2:A:300:POS:C6	2.62	0.47
1:A:50:PRO:O	1:A:54:VAL:HG23	2.15	0.47
1:A:67:TYR:HA	2:A:300:POS:H291	1.97	0.47
1:A:119:LYS:HD2	1:A:122:LYS:NZ	2.30	0.46
1:A:18:ASN:HA	1:A:183:SER:O	2.15	0.46
1:A:162:HIS:HE1	2:A:300:POS:H10	1.80	0.46
1:A:135:ILE:CD1	1:A:196:MET:SD	3.04	0.45
1:A:67:TYR:HB3	3:A:319:HOH:O	2.17	0.45
1:A:5:VAL:O	1:A:168:GLY:HA3	2.17	0.45
1:A:11:GLY:O	1:A:45:LEU:HD22	2.16	0.45
1:A:178:TRP:CE2	1:A:198:ARG:HD3	2.52	0.45
1:A:8:ARG:HG3	1:A:167:VAL:HG11	1.99	0.45
1:A:19:GLN:OE1	1:A:25:CYS:HB3	2.17	0.45
1:A:4:SER:HB3	1:A:170:GLY:HA2	2.00	0.44
1:A:4:SER:HA	1:A:169:TYR:CD1	2.52	0.44
1:A:135:ILE:HD13	1:A:196:MET:SD	2.58	0.44
1:A:76:GLN:O	1:A:78:ASN:N	2.50	0.44
1:A:134:ALA:CB	2:A:300:POS:C28	2.96	0.44
1:A:141:SER:HA	1:A:144:PHE:CE1	2.53	0.43
1:A:178:TRP:CD1	1:A:198:ARG:HB2	2.53	0.43
1:A:156:ASN:OD1	1:A:158:ASP:HB2	2.18	0.43
1:A:203:ALA:O	1:A:204:CYS:HB2	2.19	0.43
1:A:48:LEU:O	1:A:50:PRO:HD3	2.17	0.43
1:A:89:TYR:CZ	1:A:91:GLY:HA2	2.54	0.43
1:A:153:GLU:CD	1:A:153:GLU:H	2.22	0.43
1:A:171:ILE:HG22	1:A:172:GLN:N	2.31	0.42
1:A:19:GLN:HG3	2:A:300:POS:H6	2.01	0.42
1:A:119:LYS:NZ	3:A:313:HOH:O	2.52	0.42

Continued on next page...

Continued from previous page...

Atom-1	Atom-2	Interatomic distance (Å)	Clash overlap (Å)
1:A:49:SER:OG	1:A:87:TYR:HB3	2.20	0.41
1:A:111:ARG:HD2	1:A:214:LYS:HZ1	1.85	0.41
1:A:209:LEU:HD23	2:A:300:POS:C28	2.50	0.41
1:A:98:TYR:N	3:A:333:HOH:O	2.54	0.41
1:A:121:LEU:HD23	1:A:178:TRP:CZ2	2.56	0.40

There are no symmetry-related clashes.

5.3 Torsion angles [i](#)

5.3.1 Protein backbone [i](#)

In the following table, the Percentiles column shows the percent Ramachandran outliers of the chain as a percentile score with respect to all X-ray entries followed by that with respect to entries of similar resolution.

The Analysed column shows the number of residues for which the backbone conformation was analysed, and the total number of residues.

Mol	Chain	Analysed	Favoured	Allowed	Outliers	Percentiles
1	A	213/215 (99%)	184 (86%)	26 (12%)	3 (1%)	13 26

All (3) Ramachandran outliers are listed below:

Mol	Chain	Res	Type
1	A	115	GLU
1	A	42	THR
1	A	79	ARG

5.3.2 Protein sidechains [i](#)

In the following table, the Percentiles column shows the percent sidechain outliers of the chain as a percentile score with respect to all X-ray entries followed by that with respect to entries of similar resolution.

The Analysed column shows the number of residues for which the sidechain conformation was analysed, and the total number of residues.

Mol	Chain	Analysed	Rotameric	Outliers	Percentiles
1	A	173/173 (100%)	156 (90%)	17 (10%)	9 17

All (17) residues with a non-rotameric sidechain are listed below:

Mol	Chain	Res	Type
1	A	3	ASP
1	A	12	TYR
1	A	19	GLN
1	A	52	ASN
1	A	70	ASN
1	A	85	ASP
1	A	87	TYR
1	A	95	SER
1	A	97	MET
1	A	112	GLU
1	A	130	PRO
1	A	140	THR
1	A	158	ASP
1	A	191	LYS
1	A	195	LEU
1	A	201	ASN
1	A	215	MET

Some sidechains can be flipped to improve hydrogen bonding and reduce clashes. All (4) such sidechains are listed below:

Mol	Chain	Res	Type
1	A	60	ASN
1	A	70	ASN
1	A	92	GLN
1	A	177	HIS

5.3.3 RNA ⓘ

There are no RNA molecules in this entry.

5.4 Non-standard residues in protein, DNA, RNA chains ⓘ

There are no non-standard protein/DNA/RNA residues in this entry.

5.5 Carbohydrates ⓘ

There are no carbohydrates in this entry.

5.6 Ligand geometry ⓘ

1 ligand is modelled in this entry.

In the following table, the Counts columns list the number of bonds (or angles) for which Mogul statistics could be retrieved, the number of bonds (or angles) that are observed in the model and the number of bonds (or angles) that are defined in the Chemical Component Dictionary. The Link column lists molecule types, if any, to which the group is linked. The Z score for a bond length (or angle) is the number of standard deviations the observed value is removed from the expected value. A bond length (or angle) with $|Z| > 2$ is considered an outlier worth inspection. RMSZ is the root-mean-square of all Z scores of the bond lengths (or angles).

Mol	Type	Chain	Res	Link	Bond lengths			Bond angles		
					Counts	RMSZ	# Z > 2	Counts	RMSZ	# Z > 2
2	POS	A	300	1	40,40,40	2.68	11 (27%)	54,54,54	2.71	19 (35%)

In the following table, the Chirals column lists the number of chiral outliers, the number of chiral centers analysed, the number of these observed in the model and the number defined in the Chemical Component Dictionary. Similar counts are reported in the Torsion and Rings columns. '-' means no outliers of that kind were identified.

Mol	Type	Chain	Res	Link	Chirals	Torsions	Rings
2	POS	A	300	1	-	0/37/37/37	0/3/3/3

All (11) bond length outliers are listed below:

Mol	Chain	Res	Type	Atoms	Z	Observed(Å)	Ideal(Å)
2	A	300	POS	C5-C6	-2.17	1.34	1.38
2	A	300	POS	O24-C23	2.16	1.27	1.23
2	A	300	POS	C13-C8	2.21	1.43	1.38
2	A	300	POS	C10-C11	2.37	1.42	1.38
2	A	300	POS	C21-C19	4.05	1.60	1.52
2	A	300	POS	O16-S14	5.15	1.49	1.43
2	A	300	POS	C10-C9	5.36	1.48	1.38
2	A	300	POS	O7-C1	5.68	1.51	1.39
2	A	300	POS	O15-S14	5.74	1.49	1.43
2	A	300	POS	C13-C12	7.16	1.51	1.38
2	A	300	POS	S14-N17	7.74	1.71	1.61

All (19) bond angle outliers are listed below:

Mol	Chain	Res	Type	Atoms	Z	Observed(°)	Ideal(°)
2	A	300	POS	O32-C31-C33	-8.71	105.49	120.94
2	A	300	POS	O20-C19-C18	-5.45	89.53	109.35
2	A	300	POS	O16-S14-O15	-4.38	113.95	119.55

Continued on next page...

Continued from previous page...

Mol	Chain	Res	Type	Atoms	Z	Observed(°)	Ideal(°)
2	A	300	POS	C34-C35-N36	-4.17	116.35	123.63
2	A	300	POS	C19-C21-N22	-3.54	99.88	111.18
2	A	300	POS	C34-C33-C31	-2.72	111.89	120.61
2	A	300	POS	C37-C38-N36	-2.52	119.22	123.63
2	A	300	POS	C18-N17-S14	2.12	123.93	119.91
2	A	300	POS	O7-C8-C13	2.15	127.16	119.41
2	A	300	POS	C12-C11-S14	2.20	122.20	119.77
2	A	300	POS	O15-S14-C11	2.34	110.84	107.95
2	A	300	POS	C38-N36-C35	2.51	122.86	116.83
2	A	300	POS	C13-C12-C11	2.54	122.21	119.46
2	A	300	POS	C37-C33-C31	2.75	129.45	120.61
2	A	300	POS	C10-C9-C8	3.09	123.61	119.74
2	A	300	POS	C35-C34-C33	3.39	122.83	119.05
2	A	300	POS	C27-C26-C25	4.33	127.95	115.47
2	A	300	POS	C19-C18-N17	5.87	129.33	111.16
2	A	300	POS	C33-C31-N30	8.97	133.52	116.97

There are no chirality outliers.

There are no torsion outliers.

There are no ring outliers.

1 monomer is involved in 17 short contacts:

Mol	Chain	Res	Type	Clashes	Symm-Clashes
2	A	300	POS	17	0

5.7 Other polymers [i](#)

There are no such residues in this entry.

5.8 Polymer linkage issues [i](#)

There are no chain breaks in this entry.

6 Fit of model and data ⓘ

6.1 Protein, DNA and RNA chains ⓘ

EDS was not executed - this section is therefore empty.

6.2 Non-standard residues in protein, DNA, RNA chains ⓘ

EDS was not executed - this section is therefore empty.

6.3 Carbohydrates ⓘ

EDS was not executed - this section is therefore empty.

6.4 Ligands ⓘ

EDS was not executed - this section is therefore empty.

6.5 Other polymers ⓘ

EDS was not executed - this section is therefore empty.