



# Full wwPDB X-ray Structure Validation Report ⓘ

Feb 14, 2017 – 03:52 am GMT

PDB ID : 4AVG  
Title : Influenza strain pH1N1 2009 polymerase subunit PA endonuclease in complex with diketo compound 2  
Authors : Kowalinski, E.; Zubieta, C.; Wolkerstorfer, A.; Szolar, O.H.; Ruigrok, R.W.; Cusack, S.  
Deposited on : 2012-05-25  
Resolution : 2.20 Å(reported)

This is a Full wwPDB X-ray Structure Validation Report for a publicly released PDB entry.

We welcome your comments at [validation@mail.wwpdb.org](mailto:validation@mail.wwpdb.org)

A user guide is available at

<http://wwpdb.org/validation/2016/XrayValidationReportHelp>

with specific help available everywhere you see the ⓘ symbol.

---

The following versions of software and data (see [references ⓘ](#)) were used in the production of this report:

MolProbity	:	4.02b-467
Mogul	:	1.7.2 (RC1), CSD as538be (2017)
Xtriage (Phenix)	:	1.9-1692
EDS	:	trunk28620
Percentile statistics	:	20161228.v01 (using entries in the PDB archive December 28th 2016)
Refmac	:	5.8.0135
CCP4	:	6.5.0
Ideal geometry (proteins)	:	Engh & Huber (2001)
Ideal geometry (DNA, RNA)	:	Parkinson et al. (1996)
Validation Pipeline (wwPDB-VP)	:	recalc28949

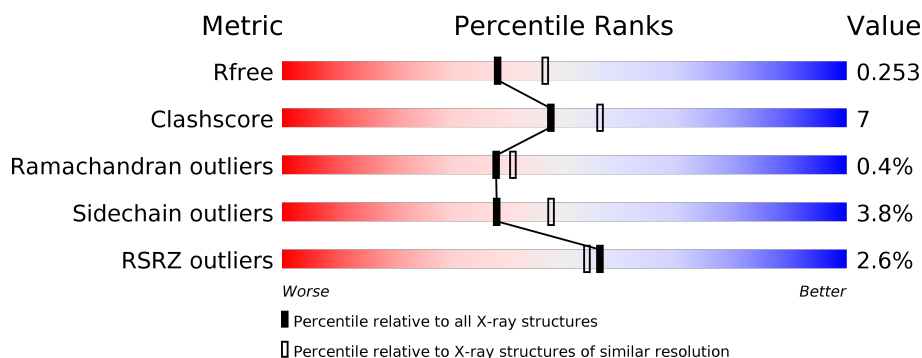
# 1 Overall quality at a glance

The following experimental techniques were used to determine the structure:

*X-RAY DIFFRACTION*

The reported resolution of this entry is 2.20 Å.

Percentile scores (ranging between 0-100) for global validation metrics of the entry are shown in the following graphic. The table shows the number of entries on which the scores are based.



Metric	Whole archive (#Entries)	Similar resolution (#Entries, resolution range(Å))
$R_{free}$	100719	4002 (2.20-2.20)
Clashscore	112137	4730 (2.20-2.20)
Ramachandran outliers	110173	4656 (2.20-2.20)
Sidechain outliers	110143	4657 (2.20-2.20)
RSRZ outliers	101464	4033 (2.20-2.20)

The table below summarises the geometric issues observed across the polymeric chains and their fit to the electron density. The red, orange, yellow and green segments on the lower bar indicate the fraction of residues that contain outliers for  $\geq 3$ , 2, 1 and 0 types of geometric quality criteria. A grey segment represents the fraction of residues that are not modelled. The numeric value for each fraction is indicated below the corresponding segment, with a dot representing fractions  $\leq 5\%$ . The upper red bar (where present) indicates the fraction of residues that have poor fit to the electron density. The numeric value is given above the bar.

Mol	Chain	Length	Quality of chain
1	A	204	 80% 13% • 5%
1	B	204	 4% 77% 15% • • 5%
1	C	204	 2% 82% 11% • •
1	D	204	 3% 77% 17% • •

## 2 Entry composition

There are 4 unique types of molecules in this entry. The entry contains 6785 atoms, of which 0 are hydrogens and 0 are deuteriums.

In the tables below, the ZeroOcc column contains the number of atoms modelled with zero occupancy, the AltConf column contains the number of residues with at least one atom in alternate conformation and the Trace column contains the number of residues modelled with at most 2 atoms.

- Molecule 1 is a protein called POLYMERASE PA.

Mol	Chain	Residues	Atoms					ZeroOcc	AltConf	Trace
1	A	194	Total	C	N	O	S	0	0	0
			1614	1025	277	300	12			
1	B	194	Total	C	N	O	S	0	0	0
			1616	1026	277	301	12			
1	C	195	Total	C	N	O	S	0	0	0
			1619	1028	278	302	11			
1	D	197	Total	C	N	O	S	0	0	0
			1631	1034	280	306	11			

There are 24 discrepancies between the modelled and reference sequences:

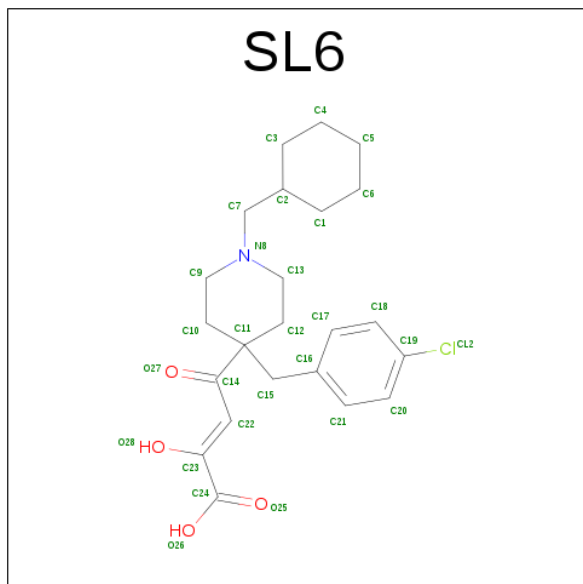
Chain	Residue	Modelled	Actual	Comment	Reference
A	-5	MET	-	EXPRESSION TAG	UNP C3W5S0
A	-4	GLY	-	EXPRESSION TAG	UNP C3W5S0
A	-3	SER	-	EXPRESSION TAG	UNP C3W5S0
A	-2	GLY	-	EXPRESSION TAG	UNP C3W5S0
A	-1	MET	-	EXPRESSION TAG	UNP C3W5S0
A	0	ALA	-	EXPRESSION TAG	UNP C3W5S0
B	-5	MET	-	EXPRESSION TAG	UNP C3W5S0
B	-4	GLY	-	EXPRESSION TAG	UNP C3W5S0
B	-3	SER	-	EXPRESSION TAG	UNP C3W5S0
B	-2	GLY	-	EXPRESSION TAG	UNP C3W5S0
B	-1	MET	-	EXPRESSION TAG	UNP C3W5S0
B	0	ALA	-	EXPRESSION TAG	UNP C3W5S0
C	-5	MET	-	EXPRESSION TAG	UNP C3W5S0
C	-4	GLY	-	EXPRESSION TAG	UNP C3W5S0
C	-3	SER	-	EXPRESSION TAG	UNP C3W5S0
C	-2	GLY	-	EXPRESSION TAG	UNP C3W5S0
C	-1	MET	-	EXPRESSION TAG	UNP C3W5S0
C	0	ALA	-	EXPRESSION TAG	UNP C3W5S0
D	-5	MET	-	EXPRESSION TAG	UNP C3W5S0
D	-4	GLY	-	EXPRESSION TAG	UNP C3W5S0
D	-3	SER	-	EXPRESSION TAG	UNP C3W5S0

*Continued on next page...*

Continued from previous page...

Chain	Residue	Modelled	Actual	Comment	Reference
D	-2	GLY	-	EXPRESSION TAG	UNP C3W5S0
D	-1	MET	-	EXPRESSION TAG	UNP C3W5S0
D	0	ALA	-	EXPRESSION TAG	UNP C3W5S0

- Molecule 2 is (Z)-4-[4-[(4-CHLOROPHENYL)METHYL]-1-(CYCLOHEXYLMETHYL)PIPERIDIN-4-YL]-2-OXIDANYL-4-OXIDANYLIDENE-BUT-2-ENOIC ACID (three-letter code: SL6) (formula: C<sub>23</sub>H<sub>30</sub>ClNO<sub>4</sub>).



Mol	Chain	Residues	Atoms					ZeroOcc	AltConf
2	A	1	Total 29	C 23	Cl 1	N 1	O 4	0	0
2	B	1	Total 29	C 23	Cl 1	N 1	O 4	0	0
2	C	1	Total 29	C 23	Cl 1	N 1	O 4	0	0
2	D	1	Total 29	C 23	Cl 1	N 1	O 4	0	0

- Molecule 3 is MANGANESE (II) ION (three-letter code: MN) (formula: Mn).

Mol	Chain	Residues	Atoms		ZeroOcc	AltConf
3	B	2	Total	Mn	0	0
			2	2		
3	A	2	Total	Mn	0	0
			2	2		
3	D	2	Total	Mn	0	0
			2	2		

Continued on next page...

*Continued from previous page...*

Mol	Chain	Residues	Atoms		ZeroOcc	AltConf
3	C	2	Total 2	Mn 2	0	0


- Molecule 4 is water.

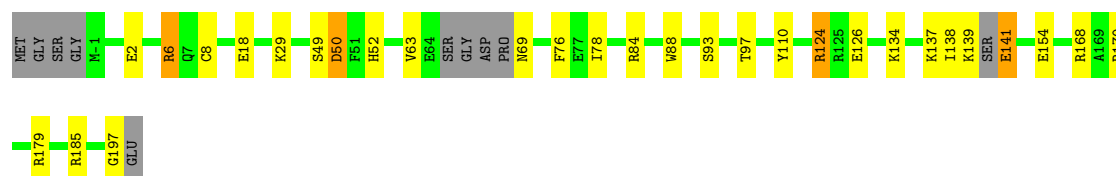
Mol	Chain	Residues	Atoms		ZeroOcc	AltConf
4	A	56	Total 56	O 56	0	0
4	B	49	Total 49	O 49	0	0
4	C	38	Total 38	O 38	0	0
4	D	38	Total 38	O 38	0	0

### 3 Residue-property plots [i](#)


These plots are drawn for all protein, RNA and DNA chains in the entry. The first graphic for a chain summarises the proportions of the various outlier classes displayed in the second graphic. The second graphic shows the sequence view annotated by issues in geometry and electron density. Residues are color-coded according to the number of geometric quality criteria for which they contain at least one outlier: green = 0, yellow = 1, orange = 2 and red = 3 or more. A red dot above a residue indicates a poor fit to the electron density ( $RSRZ > 2$ ). Stretches of 2 or more consecutive residues without any outlier are shown as a green connector. Residues present in the sample, but not in the model, are shown in grey.

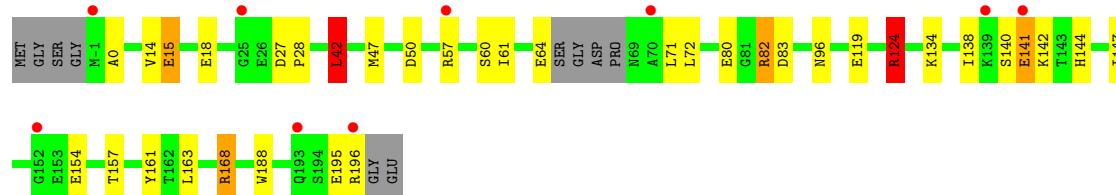
#### • Molecule 1: POLYMERASE PA

Chain A: 




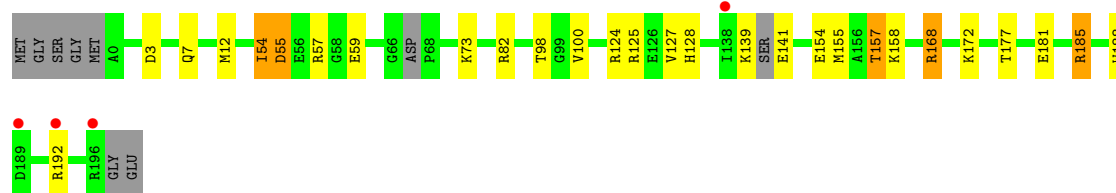
#### • Molecule 1: POLYMERASE PA

Chain B: 




#### • Molecule 1: POLYMERASE PA

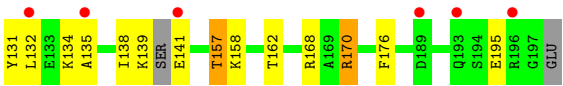
Chain C: 



#### • Molecule 1: POLYMERASE PA

Chain D: 





## 4 Data and refinement statistics

Property	Value	Source
Space group	P 21 21 21	Depositor
Cell constants a, b, c, $\alpha$ , $\beta$ , $\gamma$	56.59Å 120.81Å 128.20Å 90.00° 90.00° 90.00°	Depositor
Resolution (Å)	43.96 – 2.20 43.96 – 2.20	Depositor EDS
% Data completeness (in resolution range)	99.5 (43.96-2.20) 99.6 (43.96-2.20)	Depositor EDS
$R_{merge}$	0.07	Depositor
$R_{sym}$	(Not available)	Depositor
$\langle I/\sigma(I) \rangle$ <sup>1</sup>	2.12 (at 2.20Å)	Xtriage
Refinement program	REFMAC 5.6.0116	Depositor
R, $R_{free}$	0.196 , 0.252 0.199 , 0.253	Depositor DCC
$R_{free}$ test set	2307 reflections (5.37%)	DCC
Wilson B-factor (Å <sup>2</sup> )	33.1	Xtriage
Anisotropy	0.324	Xtriage
Bulk solvent $k_{sol}$ (e/Å <sup>3</sup> ), $B_{sol}$ (Å <sup>2</sup> )	0.35 , 50.1	EDS
L-test for twinning <sup>2</sup>	$\langle  L  \rangle = 0.45$ , $\langle L^2 \rangle = 0.28$	Xtriage
Estimated twinning fraction	No twinning to report.	Xtriage
$F_o, F_c$ correlation	0.95	EDS
Total number of atoms	6785	wwPDB-VP
Average B, all atoms (Å <sup>2</sup> )	36.0	wwPDB-VP

Xtriage's analysis on translational NCS is as follows: *The largest off-origin peak in the Patterson function is 10.36% of the height of the origin peak. No significant pseudotranslation is detected.*

<sup>1</sup>Intensities estimated from amplitudes.

<sup>2</sup>Theoretical values of  $\langle |L| \rangle$ ,  $\langle L^2 \rangle$  for acentric reflections are 0.5, 0.333 respectively for untwinned datasets, and 0.375, 0.2 for perfectly twinned datasets.

## 5 Model quality ⓘ

### 5.1 Standard geometry ⓘ

Bond lengths and bond angles in the following residue types are not validated in this section: SL6, MN

The Z score for a bond length (or angle) is the number of standard deviations the observed value is removed from the expected value. A bond length (or angle) with  $|Z| > 5$  is considered an outlier worth inspection. RMSZ is the root-mean-square of all Z scores of the bond lengths (or angles).

Mol	Chain	Bond lengths		Bond angles	
		RMSZ	$\# Z  > 5$	RMSZ	$\# Z  > 5$
1	A	0.93	2/1645 (0.1%)	1.03	8/2205 (0.4%)
1	B	0.94	1/1648 (0.1%)	1.08	12/2211 (0.5%)
1	C	0.83	1/1651 (0.1%)	1.01	7/2214 (0.3%)
1	D	0.83	0/1664	0.89	5/2234 (0.2%)
All	All	0.88	4/6608 (0.1%)	1.00	32/8864 (0.4%)

All (4) bond length outliers are listed below:

Mol	Chain	Res	Type	Atoms	Z	Observed(Å)	Ideal(Å)
1	B	188	TRP	CD2-CE2	6.14	1.48	1.41
1	C	188	TRP	CD2-CE2	6.05	1.48	1.41
1	A	126	GLU	CG-CD	-5.88	1.43	1.51
1	A	88	TRP	CD2-CE2	5.67	1.48	1.41

All (32) bond angle outliers are listed below:

Mol	Chain	Res	Type	Atoms	Z	Observed(°)	Ideal(°)
1	C	82	ARG	NE-CZ-NH2	-14.67	112.96	120.30
1	C	82	ARG	NE-CZ-NH1	13.03	126.81	120.30
1	B	82	ARG	NE-CZ-NH2	-11.69	114.46	120.30
1	B	82	ARG	NE-CZ-NH1	10.58	125.59	120.30
1	A	124	ARG	NE-CZ-NH1	10.16	125.38	120.30
1	D	124	ARG	NE-CZ-NH1	9.46	125.03	120.30
1	A	124	ARG	NE-CZ-NH2	-8.57	116.01	120.30
1	A	6	ARG	NE-CZ-NH2	-8.50	116.05	120.30
1	B	50	ASP	CB-CG-OD1	7.93	125.44	118.30
1	B	83	ASP	CB-CG-OD1	6.89	124.50	118.30
1	A	84	ARG	NE-CZ-NH1	6.68	123.64	120.30
1	B	168	ARG	NE-CZ-NH2	-6.64	116.98	120.30
1	A	6	ARG	NE-CZ-NH1	6.51	123.56	120.30

*Continued on next page...*

*Continued from previous page...*

Mol	Chain	Res	Type	Atoms	Z	Observed(°)	Ideal(°)
1	B	124	ARG	NE-CZ-NH1	6.43	123.52	120.30
1	B	168	ARG	NE-CZ-NH1	6.31	123.46	120.30
1	B	83	ASP	CB-CG-OD2	-6.20	112.72	118.30
1	B	124	ARG	NE-CZ-NH2	-6.17	117.21	120.30
1	C	168	ARG	NE-CZ-NH1	5.92	123.26	120.30
1	B	42	LEU	CA-CB-CG	5.84	128.74	115.30
1	A	84	ARG	NE-CZ-NH2	-5.69	117.45	120.30
1	B	50	ASP	CB-CG-OD2	-5.69	113.18	118.30
1	C	55	ASP	CB-CG-OD1	5.69	123.42	118.30
1	C	82	ARG	CD-NE-CZ	5.63	131.49	123.60
1	C	12	MET	CG-SD-CE	-5.63	91.19	100.20
1	D	124	ARG	NE-CZ-NH2	-5.57	117.52	120.30
1	B	47	MET	CG-SD-CE	-5.52	91.36	100.20
1	A	179	ARG	NE-CZ-NH1	5.48	123.04	120.30
1	D	157	THR	CB-CA-C	-5.22	97.51	111.60
1	D	50	ASP	CB-CG-OD1	5.18	122.96	118.30
1	A	50	ASP	CB-CG-OD2	-5.17	113.64	118.30
1	D	102	LYS	CD-CE-NZ	-5.13	99.91	111.70
1	C	125	ARG	NE-CZ-NH1	5.03	122.81	120.30

There are no chirality outliers.

There are no planarity outliers.

## 5.2 Too-close contacts ⓘ

In the following table, the Non-H and H(model) columns list the number of non-hydrogen atoms and hydrogen atoms in the chain respectively. The H(added) column lists the number of hydrogen atoms added and optimized by MolProbity. The Clashes column lists the number of clashes within the asymmetric unit, whereas Symm-Clashes lists symmetry related clashes.

Mol	Chain	Non-H	H(model)	H(added)	Clashes	Symm-Clashes
1	A	1614	0	1588	21	0
1	B	1616	0	1591	24	0
1	C	1619	0	1592	20	0
1	D	1631	0	1599	29	0
2	A	29	0	28	3	0
2	B	29	0	28	2	0
2	C	29	0	28	0	0
2	D	29	0	28	1	0
3	A	2	0	0	0	0
3	B	2	0	0	0	0

*Continued on next page...*

*Continued from previous page...*

Mol	Chain	Non-H	H(model)	H(added)	Clashes	Symm-Clashes
3	C	2	0	0	0	0
3	D	2	0	0	0	0
4	A	56	0	0	2	0
4	B	49	0	0	1	0
4	C	38	0	0	0	0
4	D	38	0	0	2	0
All	All	6785	0	6482	91	0

The all-atom clashscore is defined as the number of clashes found per 1000 atoms (including hydrogen atoms). The all-atom clashscore for this structure is 7.

All (91) close contacts within the same asymmetric unit are listed below, sorted by their clash magnitude.

Atom-1	Atom-2	Interatomic distance (Å)	Clash overlap (Å)
1:B:154:GLU:OE2	1:B:168:ARG:HD2	1.76	0.85
1:A:63:VAL:HG22	1:D:168:ARG:HH22	1.44	0.82
1:B:140:SER:C	1:B:142:LYS:H	1.83	0.82
1:D:98:THR:HG22	1:D:100:VAL:H	1.42	0.81
1:D:170:ARG:NH1	4:D:2036:HOH:O	2.16	0.79
1:C:128:HIS:CG	1:C:155:MET:HE1	2.22	0.75
1:C:154:GLU:OE1	1:C:172:LYS:NZ	2.18	0.74
1:D:98:THR:HG23	1:D:100:VAL:HG23	1.72	0.72
1:A:93:SER:O	1:A:97:THR:HG23	1.89	0.72
1:D:98:THR:CG2	1:D:100:VAL:HG23	2.20	0.71
1:C:154:GLU:OE1	1:C:168:ARG:NH1	2.23	0.71
1:B:154:GLU:OE1	1:B:168:ARG:NH1	2.24	0.70
1:B:140:SER:C	1:B:142:LYS:N	2.44	0.70
1:A:154:GLU:OE2	1:A:168:ARG:NH1	2.24	0.70
1:C:154:GLU:OE2	1:C:168:ARG:HD2	1.93	0.68
1:A:49:SER:OG	1:A:78:ILE:HD11	1.93	0.68
1:C:57:ARG:NH1	1:C:59:GLU:OE2	2.28	0.67
1:D:66:GLY:O	1:D:68:PRO:HD3	1.95	0.67
4:A:2030:HOH:O	1:B:15:GLU:HG2	1.94	0.66
1:A:197:GLY:C	4:A:2056:HOH:O	2.36	0.64
1:C:181:GLU:O	1:C:185:ARG:NH1	2.30	0.64
1:A:2:GLU:OE2	1:A:6:ARG:NH2	2.31	0.64
1:C:127:VAL:HG23	1:C:155:MET:CE	2.29	0.63
1:C:127:VAL:HB	1:C:155:MET:HE3	1.81	0.63
1:B:154:GLU:CD	1:B:168:ARG:HH11	2.02	0.62
1:D:131:TYR:CE1	1:D:135:ALA:HB2	2.35	0.61
1:A:138:ILE:HG22	1:A:141:GLU:CB	2.31	0.60

*Continued on next page...*

*Continued from previous page...*

Atom-1	Atom-2	Interatomic distance (Å)	Clash overlap (Å)
1:A:138:ILE:HG22	1:A:141:GLU:HB3	1.83	0.60
1:D:157:THR:HG22	1:D:158:LYS:N	2.17	0.59
1:D:162:THR:HG21	1:D:168:ARG:NH1	2.17	0.59
1:B:134:LYS:NZ	2:B:801:SL6:C24	2.65	0.59
1:D:131:TYR:O	1:D:132:LEU:C	2.36	0.59
2:D:801:SL6:H11C	2:D:801:SL6:H92C	1.85	0.58
1:B:119:GLU:OE2	1:B:134:LYS:NZ	2.37	0.58
1:D:139:LYS:O	1:D:141:GLU:HB3	2.02	0.58
1:D:47:MET:CE	1:D:170:ARG:HG2	2.34	0.58
1:A:185:ARG:NH2	1:B:71:LEU:CD2	2.68	0.56
1:C:55:ASP:OD2	1:C:59:GLU:OE1	2.25	0.55
1:D:71:LEU:HD23	1:D:71:LEU:N	2.22	0.55
1:B:61:ILE:HD11	1:B:72:LEU:HD13	1.88	0.54
1:D:3:ASP:O	1:D:7:GLN:HG2	2.08	0.54
1:A:185:ARG:NH2	1:B:71:LEU:HD23	2.23	0.54
1:D:94:ILE:O	1:D:98:THR:HB	2.08	0.53
1:D:98:THR:HG22	1:D:100:VAL:N	2.16	0.53
1:C:177:THR:O	1:C:181:GLU:HG2	2.08	0.53
1:A:137:LYS:HB2	2:A:801:SL6:CL2	2.46	0.52
1:C:54:ILE:HD12	1:C:73:LYS:HB2	1.93	0.52
1:D:124:ARG:CZ	1:D:195:GLU:HB2	2.41	0.51
1:A:50:ASP:O	1:A:52:HIS:ND1	2.43	0.51
1:B:0:ALA:HB1	4:B:2001:HOH:O	2.10	0.50
1:A:18:GLU:OE1	1:B:82:ARG:HD3	2.11	0.50
1:B:124:ARG:HG2	1:B:195:GLU:OE1	2.11	0.50
1:D:98:THR:CG2	1:D:100:VAL:CG2	2.88	0.49
1:A:76:PHE:HA	1:A:110:TYR:O	2.12	0.49
1:A:137:LYS:HD2	2:A:801:SL6:CL2	2.50	0.49
1:A:8:CYS:HA	1:B:71:LEU:HD12	1.94	0.48
1:B:134:LYS:HZ3	2:B:801:SL6:C24	2.26	0.47
1:D:10:ASN:HB3	1:D:13:ILE:HD12	1.95	0.47
1:A:154:GLU:OE1	1:A:168:ARG:HD2	2.15	0.47
1:C:154:GLU:CD	1:C:168:ARG:HH11	2.16	0.47
1:C:157:THR:HG22	1:C:158:LYS:HG3	1.97	0.47
1:B:147:ILE:O	1:B:154:GLU:HA	2.15	0.47
1:A:154:GLU:CD	1:A:168:ARG:HH11	2.19	0.46
1:C:127:VAL:CG2	1:C:155:MET:HE3	2.46	0.46
1:C:127:VAL:CG2	1:C:155:MET:CE	2.93	0.46
1:D:79:ILE:HD13	1:D:107:PRO:HG2	1.98	0.46
1:A:141:GLU:OE1	1:A:141:GLU:O	2.35	0.45
1:D:116:ARG:NH2	4:D:2028:HOH:O	2.49	0.45

*Continued on next page...*

Continued from previous page...

Atom-1	Atom-2	Interatomic distance (Å)	Clash overlap (Å)
1:C:127:VAL:CB	1:C:155:MET:HE3	2.45	0.45
1:D:98:THR:HG21	1:D:110:TYR:OH	2.18	0.43
1:D:20:ALA:O	1:D:24:TYR:HD2	2.01	0.43
1:C:128:HIS:CD2	1:C:155:MET:HE1	2.52	0.43
1:C:128:HIS:CA	1:C:155:MET:HE1	2.48	0.43
1:D:126:GLU:HB2	1:D:129:ILE:HD12	2.01	0.43
1:D:124:ARG:HG2	1:D:195:GLU:OE1	2.19	0.42
1:B:42:LEU:HD13	1:B:80:GLU:HG3	2.01	0.42
2:A:801:SL6:H101	2:A:801:SL6:H22	1.74	0.42
1:D:157:THR:CG2	1:D:158:LYS:N	2.82	0.42
1:B:14:VAL:O	1:B:18:GLU:HG3	2.20	0.41
1:B:144:HIS:CE1	1:B:157:THR:HB	2.55	0.41
1:B:161:TYR:O	1:B:163:LEU:N	2.50	0.41
1:C:98:THR:OG1	1:C:100:VAL:HG22	2.21	0.41
1:B:27:ASP:HA	1:B:28:PRO:HD2	1.95	0.41
1:B:72:LEU:HA	1:B:72:LEU:HD23	1.80	0.41
1:D:24:TYR:OH	1:D:84:ARG:HD3	2.20	0.41
1:C:139:LYS:C	1:C:141:GLU:HB2	2.42	0.40
1:D:77:GLU:OE2	1:D:82:ARG:NH2	2.55	0.40
1:A:134:LYS:HD3	1:A:134:LYS:HA	1.97	0.40
1:B:138:ILE:CG2	1:B:140:SER:O	2.70	0.40
1:A:139:LYS:C	1:A:141:GLU:HB3	2.42	0.40
1:D:162:THR:CG2	1:D:168:ARG:NH1	2.83	0.40

There are no symmetry-related clashes.

## 5.3 Torsion angles [i](#)

### 5.3.1 Protein backbone [i](#)

In the following table, the Percentiles column shows the percent Ramachandran outliers of the chain as a percentile score with respect to all X-ray entries followed by that with respect to entries of similar resolution.

The Analysed column shows the number of residues for which the backbone conformation was analysed, and the total number of residues.

Mol	Chain	Analysed	Favoured	Allowed	Outliers	Percentiles	
1	A	188/204 (92%)	183 (97%)	5 (3%)	0	100	100
1	B	190/204 (93%)	183 (96%)	6 (3%)	1 (0%)	32	34

Continued on next page...

*Continued from previous page...*

Mol	Chain	Analysed	Favoured	Allowed	Outliers	Percentiles	
1	C	189/204 (93%)	182 (96%)	6 (3%)	1 (0%)	32	34
1	D	193/204 (95%)	185 (96%)	7 (4%)	1 (0%)	32	34
All	All	760/816 (93%)	733 (96%)	24 (3%)	3 (0%)	38	41

All (3) Ramachandran outliers are listed below:

Mol	Chain	Res	Type
1	B	141	GLU
1	D	138	ILE
1	C	157	THR

### 5.3.2 Protein sidechains ⓘ

In the following table, the Percentiles column shows the percent sidechain outliers of the chain as a percentile score with respect to all X-ray entries followed by that with respect to entries of similar resolution.

The Analysed column shows the number of residues for which the sidechain conformation was analysed, and the total number of residues.

Mol	Chain	Analysed	Rotameric	Outliers	Percentiles	
1	A	175/182 (96%)	170 (97%)	5 (3%)	48	60
1	B	176/182 (97%)	167 (95%)	9 (5%)	28	33
1	C	176/182 (97%)	170 (97%)	6 (3%)	42	53
1	D	177/182 (97%)	170 (96%)	7 (4%)	36	45
All	All	704/728 (97%)	677 (96%)	27 (4%)	38	47

All (27) residues with a non-rotameric sidechain are listed below:

Mol	Chain	Res	Type
1	A	29	LYS
1	A	69	ASN
1	A	124	ARG
1	A	141	GLU
1	A	170	ARG
1	B	15	GLU
1	B	42	LEU
1	B	57	ARG
1	B	60	SER

*Continued on next page...*

*Continued from previous page...*

Mol	Chain	Res	Type
1	B	64	GLU
1	B	96	ASN
1	B	124	ARG
1	B	141	GLU
1	B	196	ARG
1	C	3	ASP
1	C	7	GLN
1	C	54	ILE
1	C	124	ARG
1	C	185	ARG
1	C	192	ARG
1	D	3	ASP
1	D	61	ILE
1	D	98	THR
1	D	124	ARG
1	D	134	LYS
1	D	170	ARG
1	D	176	PHE

Some sidechains can be flipped to improve hydrogen bonding and reduce clashes. All (1) such sidechains are listed below:

Mol	Chain	Res	Type
1	A	115	ASN

### 5.3.3 RNA [i](#)

There are no RNA molecules in this entry.

## 5.4 Non-standard residues in protein, DNA, RNA chains [i](#)

There are no non-standard protein/DNA/RNA residues in this entry.

## 5.5 Carbohydrates [i](#)

There are no carbohydrates in this entry.

## 5.6 Ligand geometry [i](#)

Of 12 ligands modelled in this entry, 8 are monoatomic - leaving 4 for Mogul analysis.

In the following table, the Counts columns list the number of bonds (or angles) for which Mogul statistics could be retrieved, the number of bonds (or angles) that are observed in the model and the number of bonds (or angles) that are defined in the chemical component dictionary. The Link column lists molecule types, if any, to which the group is linked. The Z score for a bond length (or angle) is the number of standard deviations the observed value is removed from the expected value. A bond length (or angle) with  $|Z| > 2$  is considered an outlier worth inspection. RMSZ is the root-mean-square of all Z scores of the bond lengths (or angles).

Mol	Type	Chain	Res	Link	Bond lengths			Bond angles		
					Counts	RMSZ	# Z  > 2	Counts	RMSZ	# Z  > 2
2	SL6	A	801	3	28,31,31	1.21	3 (10%)	34,43,43	1.76	6 (17%)
2	SL6	B	801	3	28,31,31	1.08	3 (10%)	34,43,43	2.18	9 (26%)
2	SL6	C	801	3	28,31,31	1.17	3 (10%)	34,43,43	1.34	4 (11%)
2	SL6	D	801	3	28,31,31	1.08	3 (10%)	34,43,43	1.74	9 (26%)

In the following table, the Chirals column lists the number of chiral outliers, the number of chiral centers analysed, the number of these observed in the model and the number defined in the chemical component dictionary. Similar counts are reported in the Torsion and Rings columns. '-' means no outliers of that kind were identified.

Mol	Type	Chain	Res	Link	Chirals	Torsions	Rings
2	SL6	A	801	3	-	0/19/43/43	1/3/3/3
2	SL6	B	801	3	-	0/19/43/43	0/3/3/3
2	SL6	C	801	3	-	0/19/43/43	1/3/3/3
2	SL6	D	801	3	-	0/19/43/43	1/3/3/3

All (12) bond length outliers are listed below:

Mol	Chain	Res	Type	Atoms	Z	Observed(Å)	Ideal(Å)
2	A	801	SL6	C15-C11	-3.45	1.52	1.56
2	D	801	SL6	C15-C11	-2.09	1.53	1.56
2	B	801	SL6	C11-C14	2.02	1.56	1.53
2	A	801	SL6	C22-C14	2.33	1.49	1.41
2	C	801	SL6	C22-C14	2.40	1.49	1.41
2	B	801	SL6	C22-C14	2.45	1.50	1.41
2	B	801	SL6	C19-CL2	2.50	1.80	1.74
2	D	801	SL6	C22-C14	2.61	1.50	1.41
2	D	801	SL6	C19-CL2	2.63	1.80	1.74
2	C	801	SL6	C19-CL2	2.89	1.80	1.74
2	A	801	SL6	C19-CL2	2.89	1.80	1.74
2	C	801	SL6	C11-C14	3.38	1.57	1.53

All (28) bond angle outliers are listed below:

Mol	Chain	Res	Type	Atoms	Z	Observed(°)	Ideal(°)
2	B	801	SL6	C12-C11-C15	-4.29	100.69	109.71
2	A	801	SL6	C12-C11-C15	-3.84	101.64	109.71
2	B	801	SL6	C12-C11-C10	-3.30	104.06	108.25
2	B	801	SL6	C13-N8-C7	-2.86	102.41	111.17
2	D	801	SL6	C12-C11-C15	-2.85	103.71	109.71
2	D	801	SL6	C6-C1-C2	-2.46	107.68	112.19
2	B	801	SL6	O27-C14-C22	-2.45	118.38	126.39
2	D	801	SL6	C4-C3-C2	-2.13	108.28	112.19
2	D	801	SL6	C11-C15-C16	-2.09	113.25	116.33
2	C	801	SL6	O27-C14-C22	-2.08	119.58	126.39
2	A	801	SL6	C13-N8-C7	-2.06	104.85	111.17
2	D	801	SL6	C9-N8-C7	2.03	117.38	111.17
2	C	801	SL6	C9-N8-C7	2.05	117.44	111.17
2	D	801	SL6	O28-C23-C22	2.10	124.20	121.09
2	B	801	SL6	C11-C14-C22	2.11	123.16	118.84
2	A	801	SL6	C21-C16-C17	2.24	121.72	118.16
2	D	801	SL6	C15-C11-C14	2.38	112.39	107.14
2	C	801	SL6	O28-C23-C22	2.77	125.19	121.09
2	C	801	SL6	C15-C11-C14	2.77	113.24	107.14
2	B	801	SL6	C15-C11-C14	2.85	113.42	107.14
2	A	801	SL6	C11-C15-C16	3.06	120.87	116.33
2	B	801	SL6	C13-N8-C9	3.32	116.39	108.87
2	A	801	SL6	C12-C13-N8	3.72	114.31	111.01
2	D	801	SL6	C10-C9-N8	4.21	114.73	111.01
2	D	801	SL6	C12-C13-N8	5.30	115.70	111.01
2	B	801	SL6	C12-C13-N8	5.37	115.76	111.01
2	A	801	SL6	C10-C9-N8	5.48	115.86	111.01
2	B	801	SL6	C10-C9-N8	6.90	117.11	111.01

There are no chirality outliers.

There are no torsion outliers.

All (3) ring outliers are listed below:

Mol	Chain	Res	Type	Atoms
2	C	801	SL6	C10-C11-C12-C13-C9-N8
2	D	801	SL6	C10-C11-C12-C13-C9-N8
2	A	801	SL6	C10-C11-C12-C13-C9-N8

3 monomers are involved in 6 short contacts:

Mol	Chain	Res	Type	Clashes	Symm-Clashes
2	A	801	SL6	3	0

*Continued on next page...*

*Continued from previous page...*

Mol	Chain	Res	Type	Clashes	Symm-Clashes
2	B	801	SL6	2	0
2	D	801	SL6	1	0

## 5.7 Other polymers [i](#)

There are no such residues in this entry.

## 5.8 Polymer linkage issues [i](#)

There are no chain breaks in this entry.

## 6 Fit of model and data

### 6.1 Protein, DNA and RNA chains

In the following table, the column labelled ‘#RSRZ> 2’ contains the number (and percentage) of RSRZ outliers, followed by percent RSRZ outliers for the chain as percentile scores relative to all X-ray entries and entries of similar resolution. The OWAB column contains the minimum, median, 95<sup>th</sup> percentile and maximum values of the occupancy-weighted average B-factor per residue. The column labelled ‘Q< 0.9’ lists the number of (and percentage) of residues with an average occupancy less than 0.9.

Mol	Chain	Analysed	<RSRZ>	#RSRZ>2	OWAB(Å <sup>2</sup> )	Q<0.9
1	A	194/204 (95%)	-0.36	0 <span>100</span> <span>100</span>	15, 30, 55, 82	0
1	B	194/204 (95%)	-0.13	9 (4%) <span>33</span> <span>32</span>	16, 32, 60, 97	0
1	C	195/204 (95%)	-0.13	4 (2%) <span>64</span> <span>61</span>	21, 38, 61, 80	0
1	D	197/204 (96%)	-0.01	7 (3%) <span>43</span> <span>41</span>	18, 38, 65, 90	0
All	All	780/816 (95%)	-0.16	20 (2%) <span>56</span> <span>54</span>	15, 34, 61, 97	0

All (20) RSRZ outliers are listed below:

Mol	Chain	Res	Type	RSRZ
1	D	196	ARG	3.7
1	B	25	GLY	3.4
1	D	135	ALA	3.3
1	B	57	ARG	3.2
1	B	196	ARG	3.0
1	B	193	GLN	2.8
1	C	138	ILE	2.7
1	D	189	ASP	2.6
1	C	189	ASP	2.6
1	B	-1	MET	2.6
1	D	141	GLU	2.5
1	D	193	GLN	2.4
1	B	139	LYS	2.3
1	D	65	SER	2.2
1	C	192	ARG	2.1
1	B	152	GLY	2.1
1	D	132	LEU	2.1
1	B	141	GLU	2.0
1	B	70	ALA	2.0
1	C	196	ARG	2.0

## 6.2 Non-standard residues in protein, DNA, RNA chains [i](#)

There are no non-standard protein/DNA/RNA residues in this entry.

## 6.3 Carbohydrates [i](#)

There are no carbohydrates in this entry.

## 6.4 Ligands [i](#)

In the following table, the Atoms column lists the number of modelled atoms in the group and the number defined in the chemical component dictionary. LLDF column lists the quality of electron density of the group with respect to its neighbouring residues in protein, DNA or RNA chains. The B-factors column lists the minimum, median, 95<sup>th</sup> percentile and maximum values of B factors of atoms in the group. The column labelled 'Q< 0.9' lists the number of atoms with occupancy less than 0.9.

Mol	Type	Chain	Res	Atoms	RSCC	RSR	LLDF	B-factors(Å <sup>2</sup> )	Q<0.9
2	SL6	A	801	29/29	0.87	0.15	0.92	33,50,68,74	0
2	SL6	B	801	29/29	0.89	0.17	0.79	29,48,74,75	0
2	SL6	C	801	29/29	0.93	0.15	0.15	23,49,67,68	0
2	SL6	D	801	29/29	0.90	0.16	0.03	32,58,70,73	0
3	MN	D	901	1/1	1.00	0.06	-1.43	30,30,30,30	0
3	MN	B	901	1/1	0.99	0.09	-1.62	25,25,25,25	0
3	MN	D	902	1/1	0.98	0.03	-3.39	42,42,42,42	0
3	MN	A	901	1/1	1.00	0.06	-3.54	28,28,28,28	0
3	MN	C	902	1/1	0.99	0.05	-3.94	38,38,38,38	0
3	MN	A	902	1/1	0.99	0.06	-6.12	36,36,36,36	0
3	MN	B	902	1/1	0.99	0.04	-6.49	33,33,33,33	0
3	MN	C	901	1/1	1.00	0.06	-	27,27,27,27	0

## 6.5 Other polymers [i](#)

There are no such residues in this entry.