



wwPDB X-ray Structure Validation Summary Report ⓘ

Feb 15, 2017 – 04:17 am GMT

PDB ID : 5B0M
Title : Structure of MoeN5-Sso7d fusion protein in complex with beta-dodecyl maltoside
Authors : Ko, T.-P.; Zhang, L.; Chen, C.-C.; Guo, R.-T.; Oldfield, E.O.
Deposited on : 2015-11-02
Resolution : 3.05 Å(reported)

This is a wwPDB X-ray Structure Validation Summary Report for a publicly released PDB entry.

We welcome your comments at validation@mail.wwpdb.org

A user guide is available at

<http://wwpdb.org/validation/2016/XrayValidationReportHelp>

with specific help available everywhere you see the ⓘ symbol.

The following versions of software and data (see [references ⓘ](#)) were used in the production of this report:

MolProbity : 4.02b-467
Mogul : 1.7.2 (RC1), CSD as538be (2017)
Xtriage (Phenix) : 1.9-1692
EDS : trunk28620
Percentile statistics : 20161228.v01 (using entries in the PDB archive December 28th 2016)
Refmac : 5.8.0135
CCP4 : 6.5.0
Ideal geometry (proteins) : Engh & Huber (2001)
Ideal geometry (DNA, RNA) : Parkinson et al. (1996)
Validation Pipeline (wwPDB-VP) : recalc28949

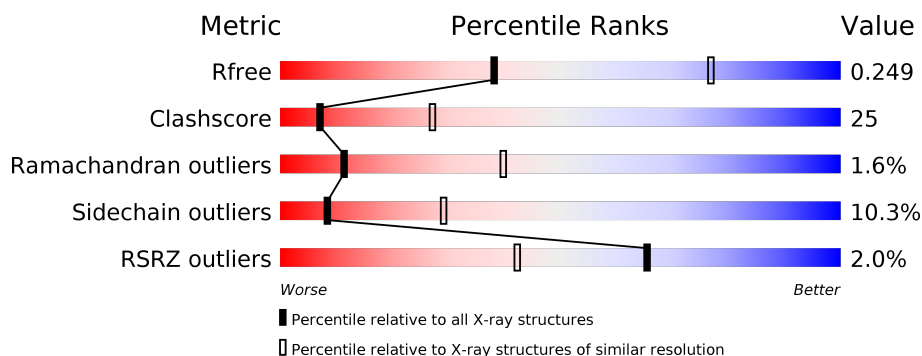
1 Overall quality at a glance

The following experimental techniques were used to determine the structure:

X-RAY DIFFRACTION

The reported resolution of this entry is 3.05 Å.

Percentile scores (ranging between 0-100) for global validation metrics of the entry are shown in the following graphic. The table shows the number of entries on which the scores are based.



Metric	Whole archive (#Entries)	Similar resolution (#Entries, resolution range(Å))
R_{free}	100719	1348 (3.10-3.02)
Clashscore	112137	1462 (3.10-3.02)
Ramachandran outliers	110173	1410 (3.10-3.02)
Sidechain outliers	110143	1410 (3.10-3.02)
RSRZ outliers	101464	1355 (3.10-3.02)

The table below summarises the geometric issues observed across the polymeric chains and their fit to the electron density. The red, orange, yellow and green segments on the lower bar indicate the fraction of residues that contain outliers for ≥ 3 , 2, 1 and 0 types of geometric quality criteria. A grey segment represents the fraction of residues that are not modelled. The numeric value for each fraction is indicated below the corresponding segment, with a dot representing fractions $\leq 5\%$. The upper red bar (where present) indicates the fraction of residues that have poor fit to the electron density. The numeric value is given above the bar.

Mol	Chain	Length	Quality of chain
1	A	343	<div> <div>0%</div> <div> <div>45%</div> <div>28%</div> <div>•</div> <div>23%</div> </div> </div>
1	B	343	<div> <div>2%</div> <div> <div>50%</div> <div>43%</div> <div>• •</div> </div> </div>
1	C	343	<div> <div>0%</div> <div> <div>41%</div> <div>31%</div> <div>•</div> <div>23%</div> </div> </div>
1	D	343	<div> <div>2%</div> <div> <div>50%</div> <div>41%</div> <div>5%</div> <div>• •</div> </div> </div>
1	E	343	<div> <div>0%</div> <div> <div>44%</div> <div>32%</div> <div>•</div> <div>21%</div> </div> </div>
1	F	343	<div> <div>3%</div> <div> <div>57%</div> <div>35%</div> <div>• •</div> </div> </div>

Continued on next page...

Continued from previous page...

Mol	Chain	Length	Quality of chain
1	G	343	
1	H	343	

The following table lists non-polymeric compounds, carbohydrate monomers and non-standard residues in protein, DNA, RNA chains that are outliers for geometric or electron-density-fit criteria:

Mol	Type	Chain	Res	Chirality	Geometry	Clashes	Electron density
2	LMT	F	901	-	-	-	X
2	LMT	F	902	-	-	-	X
2	LMT	G	902	-	-	-	X
2	LMT	H	901	-	-	-	X
2	LMT	H	902	-	-	-	X
2	LMT	H	903	-	-	-	X

2 Entry composition

There are 3 unique types of molecules in this entry. The entry contains 19074 atoms, of which 0 are hydrogens and 0 are deuteriums.

In the tables below, the ZeroOcc column contains the number of atoms modelled with zero occupancy, the AltConf column contains the number of residues with at least one atom in alternate conformation and the Trace column contains the number of residues modelled with at most 2 atoms.

- Molecule 1 is a protein called MoeN5,DNA-binding protein 7d.

Mol	Chain	Residues	Atoms					ZeroOcc	AltConf	Trace
1	A	264	Total	C	N	O	S	0	0	0
			2010	1240	374	385	11			
1	B	334	Total	C	N	O	S	0	0	0
			2549	1582	466	487	14			
1	C	264	Total	C	N	O	S	0	0	0
			2010	1240	374	385	11			
1	D	332	Total	C	N	O	S	0	0	0
			2533	1571	463	485	14			
1	E	270	Total	C	N	O	S	0	0	0
			2066	1274	388	393	11			
1	F	332	Total	C	N	O	S	0	0	0
			2534	1573	464	483	14			
1	G	267	Total	C	N	O	S	0	0	0
			2036	1256	379	390	11			
1	H	333	Total	C	N	O	S	0	0	0
			2542	1577	465	486	14			

There are 152 discrepancies between the modelled and reference sequences:

Chain	Residue	Modelled	Actual	Comment	Reference
A	-13	MET	-	expression tag	UNP A0A010
A	-12	ALA	-	expression tag	UNP A0A010
A	-11	HIS	-	expression tag	UNP A0A010
A	-10	HIS	-	expression tag	UNP A0A010
A	-9	HIS	-	expression tag	UNP A0A010
A	-8	HIS	-	expression tag	UNP A0A010
A	-7	HIS	-	expression tag	UNP A0A010
A	-6	HIS	-	expression tag	UNP A0A010
A	-5	VAL	-	expression tag	UNP A0A010
A	-4	ASP	-	expression tag	UNP A0A010
A	-3	ASP	-	expression tag	UNP A0A010
A	-2	ASP	-	expression tag	UNP A0A010
A	-1	ASP	-	expression tag	UNP A0A010

Continued on next page...

Continued from previous page...

Chain	Residue	Modelled	Actual	Comment	Reference
A	0	LYS	-	expression tag	UNP A0A010
A	261	ALA	-	linker	UNP A0A010
A	262	GLY	-	linker	UNP A0A010
A	263	ALA	-	linker	UNP A0A010
A	264	GLY	-	linker	UNP A0A010
A	265	ALA	-	linker	UNP A0A010
B	-13	MET	-	expression tag	UNP A0A010
B	-12	ALA	-	expression tag	UNP A0A010
B	-11	HIS	-	expression tag	UNP A0A010
B	-10	HIS	-	expression tag	UNP A0A010
B	-9	HIS	-	expression tag	UNP A0A010
B	-8	HIS	-	expression tag	UNP A0A010
B	-7	HIS	-	expression tag	UNP A0A010
B	-6	HIS	-	expression tag	UNP A0A010
B	-5	VAL	-	expression tag	UNP A0A010
B	-4	ASP	-	expression tag	UNP A0A010
B	-3	ASP	-	expression tag	UNP A0A010
B	-2	ASP	-	expression tag	UNP A0A010
B	-1	ASP	-	expression tag	UNP A0A010
B	0	LYS	-	expression tag	UNP A0A010
B	261	ALA	-	linker	UNP A0A010
B	262	GLY	-	linker	UNP A0A010
B	263	ALA	-	linker	UNP A0A010
B	264	GLY	-	linker	UNP A0A010
B	265	ALA	-	linker	UNP A0A010
C	-13	MET	-	expression tag	UNP A0A010
C	-12	ALA	-	expression tag	UNP A0A010
C	-11	HIS	-	expression tag	UNP A0A010
C	-10	HIS	-	expression tag	UNP A0A010
C	-9	HIS	-	expression tag	UNP A0A010
C	-8	HIS	-	expression tag	UNP A0A010
C	-7	HIS	-	expression tag	UNP A0A010
C	-6	HIS	-	expression tag	UNP A0A010
C	-5	VAL	-	expression tag	UNP A0A010
C	-4	ASP	-	expression tag	UNP A0A010
C	-3	ASP	-	expression tag	UNP A0A010
C	-2	ASP	-	expression tag	UNP A0A010
C	-1	ASP	-	expression tag	UNP A0A010
C	0	LYS	-	expression tag	UNP A0A010
C	261	ALA	-	linker	UNP A0A010
C	262	GLY	-	linker	UNP A0A010
C	263	ALA	-	linker	UNP A0A010

Continued on next page...

Continued from previous page...

Chain	Residue	Modelled	Actual	Comment	Reference
C	264	GLY	-	linker	UNP A0A010
C	265	ALA	-	linker	UNP A0A010
D	-13	MET	-	expression tag	UNP A0A010
D	-12	ALA	-	expression tag	UNP A0A010
D	-11	HIS	-	expression tag	UNP A0A010
D	-10	HIS	-	expression tag	UNP A0A010
D	-9	HIS	-	expression tag	UNP A0A010
D	-8	HIS	-	expression tag	UNP A0A010
D	-7	HIS	-	expression tag	UNP A0A010
D	-6	HIS	-	expression tag	UNP A0A010
D	-5	VAL	-	expression tag	UNP A0A010
D	-4	ASP	-	expression tag	UNP A0A010
D	-3	ASP	-	expression tag	UNP A0A010
D	-2	ASP	-	expression tag	UNP A0A010
D	-1	ASP	-	expression tag	UNP A0A010
D	0	LYS	-	expression tag	UNP A0A010
D	261	ALA	-	linker	UNP A0A010
D	262	GLY	-	linker	UNP A0A010
D	263	ALA	-	linker	UNP A0A010
D	264	GLY	-	linker	UNP A0A010
D	265	ALA	-	linker	UNP A0A010
E	-13	MET	-	expression tag	UNP A0A010
E	-12	ALA	-	expression tag	UNP A0A010
E	-11	HIS	-	expression tag	UNP A0A010
E	-10	HIS	-	expression tag	UNP A0A010
E	-9	HIS	-	expression tag	UNP A0A010
E	-8	HIS	-	expression tag	UNP A0A010
E	-7	HIS	-	expression tag	UNP A0A010
E	-6	HIS	-	expression tag	UNP A0A010
E	-5	VAL	-	expression tag	UNP A0A010
E	-4	ASP	-	expression tag	UNP A0A010
E	-3	ASP	-	expression tag	UNP A0A010
E	-2	ASP	-	expression tag	UNP A0A010
E	-1	ASP	-	expression tag	UNP A0A010
E	0	LYS	-	expression tag	UNP A0A010
E	261	ALA	-	linker	UNP A0A010
E	262	GLY	-	linker	UNP A0A010
E	263	ALA	-	linker	UNP A0A010
E	264	GLY	-	linker	UNP A0A010
E	265	ALA	-	linker	UNP A0A010
F	-13	MET	-	expression tag	UNP A0A010
F	-12	ALA	-	expression tag	UNP A0A010

Continued on next page...

Continued from previous page...

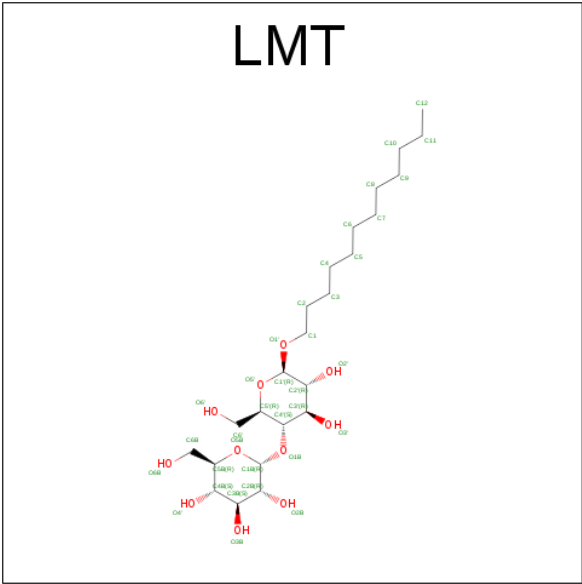
Chain	Residue	Modelled	Actual	Comment	Reference
F	-11	HIS	-	expression tag	UNP A0A010
F	-10	HIS	-	expression tag	UNP A0A010
F	-9	HIS	-	expression tag	UNP A0A010
F	-8	HIS	-	expression tag	UNP A0A010
F	-7	HIS	-	expression tag	UNP A0A010
F	-6	HIS	-	expression tag	UNP A0A010
F	-5	VAL	-	expression tag	UNP A0A010
F	-4	ASP	-	expression tag	UNP A0A010
F	-3	ASP	-	expression tag	UNP A0A010
F	-2	ASP	-	expression tag	UNP A0A010
F	-1	ASP	-	expression tag	UNP A0A010
F	0	LYS	-	expression tag	UNP A0A010
F	261	ALA	-	linker	UNP A0A010
F	262	GLY	-	linker	UNP A0A010
F	263	ALA	-	linker	UNP A0A010
F	264	GLY	-	linker	UNP A0A010
F	265	ALA	-	linker	UNP A0A010
G	-13	MET	-	expression tag	UNP A0A010
G	-12	ALA	-	expression tag	UNP A0A010
G	-11	HIS	-	expression tag	UNP A0A010
G	-10	HIS	-	expression tag	UNP A0A010
G	-9	HIS	-	expression tag	UNP A0A010
G	-8	HIS	-	expression tag	UNP A0A010
G	-7	HIS	-	expression tag	UNP A0A010
G	-6	HIS	-	expression tag	UNP A0A010
G	-5	VAL	-	expression tag	UNP A0A010
G	-4	ASP	-	expression tag	UNP A0A010
G	-3	ASP	-	expression tag	UNP A0A010
G	-2	ASP	-	expression tag	UNP A0A010
G	-1	ASP	-	expression tag	UNP A0A010
G	0	LYS	-	expression tag	UNP A0A010
G	261	ALA	-	linker	UNP A0A010
G	262	GLY	-	linker	UNP A0A010
G	263	ALA	-	linker	UNP A0A010
G	264	GLY	-	linker	UNP A0A010
G	265	ALA	-	linker	UNP A0A010
H	-13	MET	-	expression tag	UNP A0A010
H	-12	ALA	-	expression tag	UNP A0A010
H	-11	HIS	-	expression tag	UNP A0A010
H	-10	HIS	-	expression tag	UNP A0A010
H	-9	HIS	-	expression tag	UNP A0A010
H	-8	HIS	-	expression tag	UNP A0A010

Continued on next page...

Continued from previous page...

Chain	Residue	Modelled	Actual	Comment	Reference
H	-7	HIS	-	expression tag	UNP A0A010
H	-6	HIS	-	expression tag	UNP A0A010
H	-5	VAL	-	expression tag	UNP A0A010
H	-4	ASP	-	expression tag	UNP A0A010
H	-3	ASP	-	expression tag	UNP A0A010
H	-2	ASP	-	expression tag	UNP A0A010
H	-1	ASP	-	expression tag	UNP A0A010
H	0	LYS	-	expression tag	UNP A0A010
H	261	ALA	-	linker	UNP A0A010
H	262	GLY	-	linker	UNP A0A010
H	263	ALA	-	linker	UNP A0A010
H	264	GLY	-	linker	UNP A0A010
H	265	ALA	-	linker	UNP A0A010

- Molecule 2 is DODECYL-BETA-D-MALTOSE (three-letter code: LMT) (formula: C₂₄H₄₆O₁₁).



Mol	Chain	Residues	Atoms			ZeroOcc	AltConf
2	E	1	Total	C	O	0	0
			35	24	11		
2	F	1	Total	C	O	0	0
			35	24	11		
2	F	1	Total	C	O	0	0
			35	24	11		
2	G	1	Total	C	O	0	0
			35	24	11		

Continued on next page...

Continued from previous page...

Mol	Chain	Residues	Atoms			ZeroOcc	AltConf
2	G	1	Total	C	O	0	0
			35	24	11		
2	H	1	Total	C	O	0	0
			35	24	11		
2	H	1	Total	C	O	0	0
			35	24	11		
2	H	1	Total	C	O	0	0
			35	24	11		

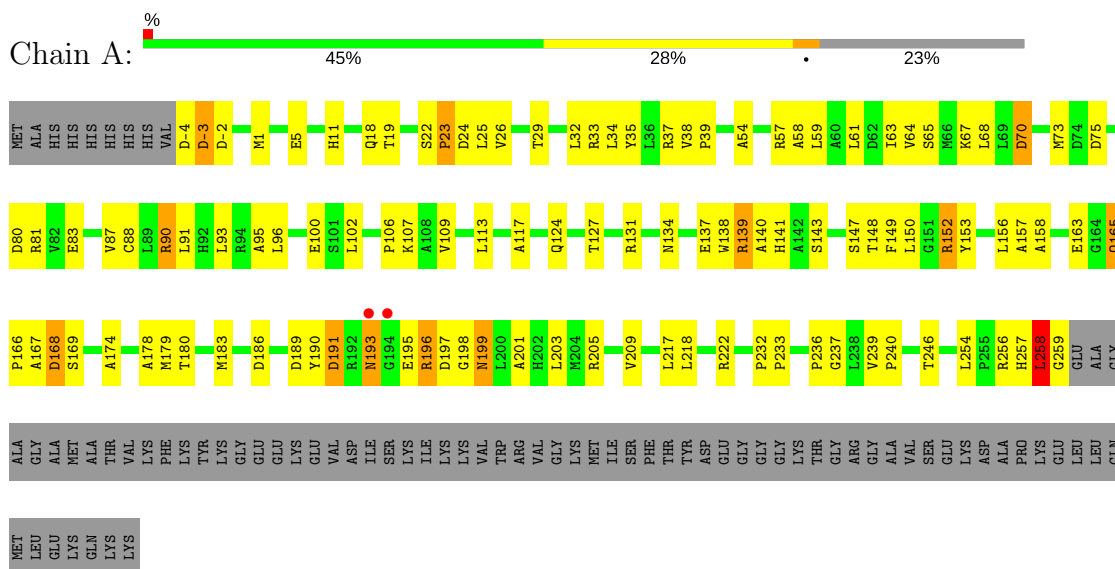
- Molecule 3 is water.

Mol	Chain	Residues	Atoms		ZeroOcc	AltConf
3	A	77	Total	O	0	0
			77	77		
3	B	70	Total	O	0	0
			70	70		
3	C	69	Total	O	0	0
			69	69		
3	D	62	Total	O	0	0
			62	62		
3	E	54	Total	O	0	0
			54	54		
3	F	59	Total	O	0	0
			59	59		
3	G	48	Total	O	0	0
			48	48		
3	H	75	Total	O	0	0
			75	75		

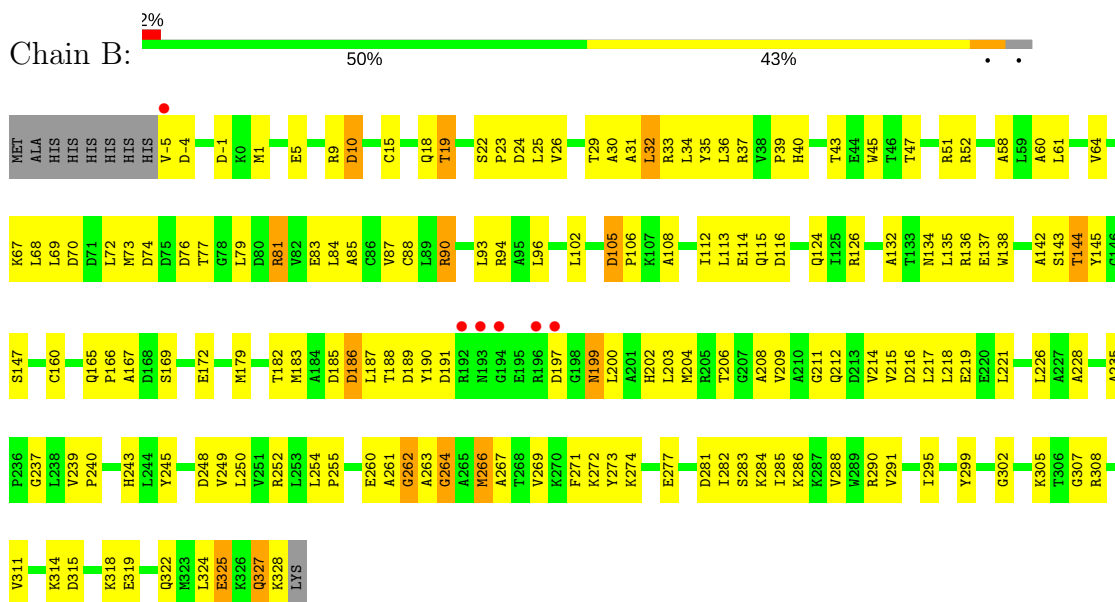
3 Residue-property plots [i](#)

These plots are drawn for all protein, RNA and DNA chains in the entry. The first graphic for a chain summarises the proportions of the various outlier classes displayed in the second graphic. The second graphic shows the sequence view annotated by issues in geometry and electron density. Residues are color-coded according to the number of geometric quality criteria for which they contain at least one outlier: green = 0, yellow = 1, orange = 2 and red = 3 or more. A red dot above a residue indicates a poor fit to the electron density ($RSRZ > 2$). Stretches of 2 or more consecutive residues without any outlier are shown as a green connector. Residues present in the sample, but not in the model, are shown in grey.

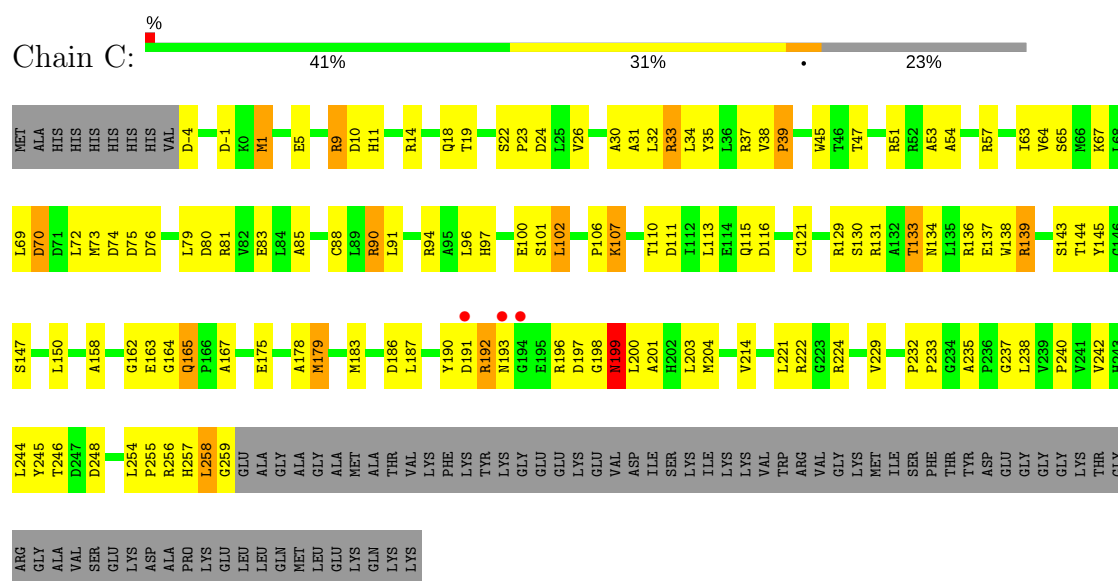
• Molecule 1: MoeN5,DNA-binding protein 7d



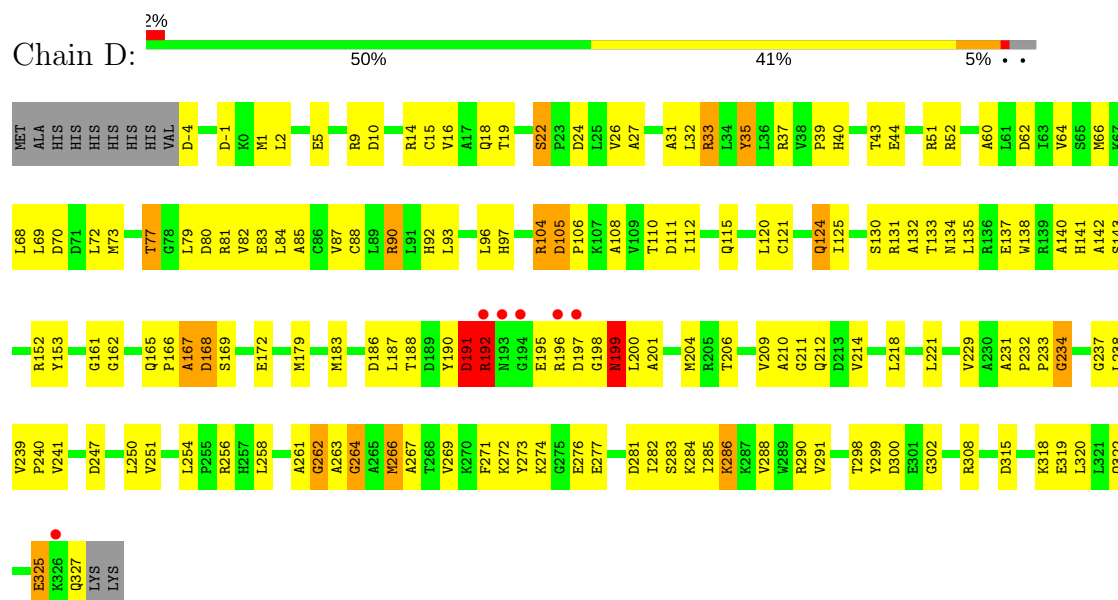
• Molecule 1: MoeN5,DNA-binding protein 7d



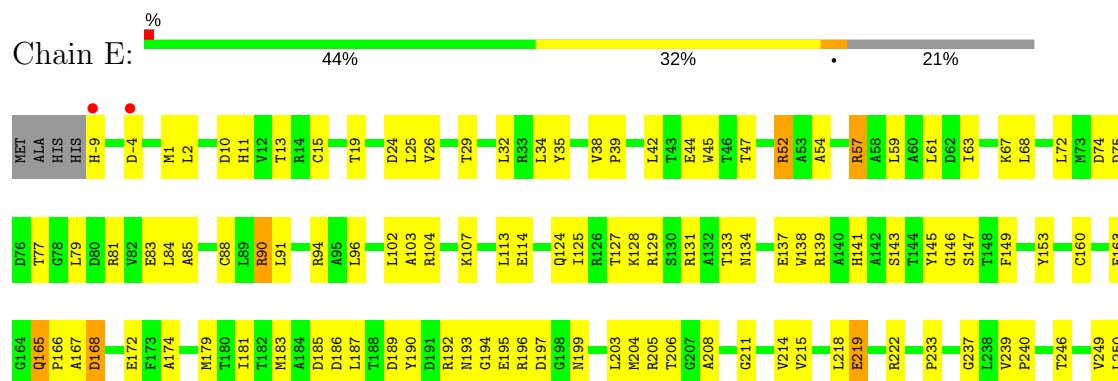
• Molecule 1: MoeN5,DNA-binding protein 7d

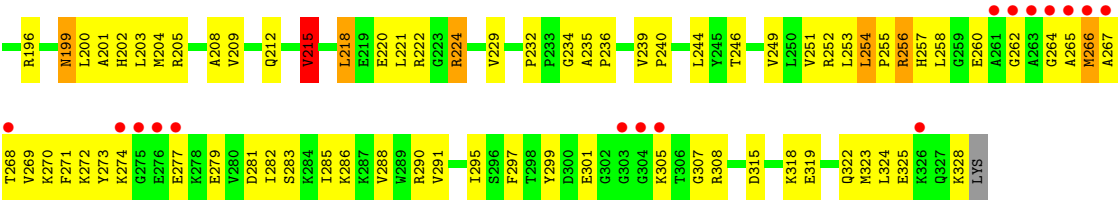


• Molecule 1: MoeN5,DNA-binding protein 7d



• Molecule 1: MoeN5,DNA-binding protein 7d





4 Data and refinement statistics

Property	Value	Source
Space group	I 2 2 2	Depositor
Cell constants a, b, c, α , β , γ	143.06Å 206.13Å 218.92Å 90.00° 90.00° 90.00°	Depositor
Resolution (Å)	25.00 – 3.05 24.92 – 3.00	Depositor EDS
% Data completeness (in resolution range)	89.0 (25.00-3.05) 88.5 (24.92-3.00)	Depositor EDS
R_{merge}	0.09	Depositor
R_{sym}	(Not available)	Depositor
$\langle I/\sigma(I) \rangle$ ¹	1.98 (at 2.99Å)	Xtriage
Refinement program	CNS	Depositor
R, R_{free}	0.177 , 0.249 0.178 , 0.249	Depositor DCC
R_{free} test set	2773 reflections (5.05%)	DCC
Wilson B-factor (Å ²)	51.4	Xtriage
Anisotropy	0.258	Xtriage
Bulk solvent k_{sol} (e/Å ³), B_{sol} (Å ²)	0.28 , 46.0	EDS
L-test for twinning ²	$\langle L \rangle = 0.48$, $\langle L^2 \rangle = 0.32$	Xtriage
Estimated twinning fraction	No twinning to report.	Xtriage
F_o, F_c correlation	0.95	EDS
Total number of atoms	19074	wwPDB-VP
Average B, all atoms (Å ²)	58.0	wwPDB-VP

Xtriage's analysis on translational NCS is as follows: *The analyses of the Patterson function reveals a significant off-origin peak that is 49.47 % of the origin peak, indicating pseudo translational symmetry. The chance of finding a peak of this or larger height randomly in a structure without pseudo translational symmetry is equal to 7.4249e-05. The detected translational NCS is most likely also responsible for the elevated intensity ratio.*

¹ Intensities estimated from amplitudes.

² Theoretical values of $\langle |L| \rangle$, $\langle L^2 \rangle$ for acentric reflections are 0.5, 0.333 respectively for untwinned datasets, and 0.375, 0.2 for perfectly twinned datasets.

5 Model quality

5.1 Standard geometry

Bond lengths and bond angles in the following residue types are not validated in this section: LMT

The Z score for a bond length (or angle) is the number of standard deviations the observed value is removed from the expected value. A bond length (or angle) with $|Z| > 5$ is considered an outlier worth inspection. RMSZ is the root-mean-square of all Z scores of the bond lengths (or angles).

Mol	Chain	Bond lengths		Bond angles	
		RMSZ	$\# Z > 5$	RMSZ	$\# Z > 5$
1	A	0.76	0/2042	0.88	0/2775
1	B	0.70	0/2588	0.87	0/3499
1	C	0.74	1/2042 (0.0%)	0.92	2/2775 (0.1%)
1	D	0.69	0/2572	0.86	0/3478
1	E	0.71	1/2102 (0.0%)	0.86	0/2857
1	F	0.70	0/2573	0.84	2/3478 (0.1%)
1	G	0.73	0/2069	0.91	2/2812 (0.1%)
1	H	0.70	0/2581	0.87	1/3489 (0.0%)
All	All	0.71	2/18569 (0.0%)	0.88	7/25163 (0.0%)

Chiral center outliers are detected by calculating the chiral volume of a chiral center and verifying if the center is modelled as a planar moiety or with the opposite hand. A planarity outlier is detected by checking planarity of atoms in a peptide group, atoms in a mainchain group or atoms of a sidechain that are expected to be planar.

Mol	Chain	#Chirality outliers	#Planarity outliers
1	C	0	1
1	D	0	1
1	E	0	1
1	F	0	1
1	G	0	1
1	H	0	1
All	All	0	6

All (2) bond length outliers are listed below:

Mol	Chain	Res	Type	Atoms	Z	Observed(Å)	Ideal(Å)
1	C	121	CYS	CB-SG	-6.24	1.71	1.82
1	E	219	GLU	CG-CD	5.28	1.59	1.51

The worst 5 of 7 bond angle outliers are listed below:

Mol	Chain	Res	Type	Atoms	Z	Observed(°)	Ideal(°)
1	F	96	LEU	CA-CB-CG	7.58	132.73	115.30
1	G	244	LEU	CA-CB-CG	6.97	131.33	115.30
1	C	9	ARG	NE-CZ-NH2	-6.80	116.90	120.30
1	C	102	LEU	CA-CB-CG	6.20	129.55	115.30
1	F	62	ASP	CB-CG-OD2	5.47	123.22	118.30

There are no chirality outliers.

5 of 6 planarity outliers are listed below:

Mol	Chain	Res	Type	Group
1	C	245	TYR	Sidechain
1	D	35	TYR	Sidechain
1	E	153	TYR	Sidechain
1	F	153	TYR	Sidechain
1	G	153	TYR	Sidechain

5.2 Too-close contacts

In the following table, the Non-H and H(model) columns list the number of non-hydrogen atoms and hydrogen atoms in the chain respectively. The H(added) column lists the number of hydrogen atoms added and optimized by MolProbity. The Clashes column lists the number of clashes within the asymmetric unit, whereas Symm-Clashes lists symmetry related clashes.

Mol	Chain	Non-H	H(model)	H(added)	Clashes	Symm-Clashes
1	A	2010	0	1990	86	0
1	B	2549	0	2554	143	0
1	C	2010	0	1990	108	0
1	D	2533	0	2532	150	0
1	E	2066	0	2033	103	0
1	F	2534	0	2541	138	0
1	G	2036	0	2012	105	0
1	H	2542	0	2545	140	0
2	E	35	0	46	9	0
2	F	70	0	92	17	0
2	G	70	0	92	17	0
2	H	105	0	138	28	0
3	A	77	0	0	2	0
3	B	70	0	0	4	0
3	C	69	0	0	2	0
3	D	62	0	0	1	0
3	E	54	0	0	1	0
3	F	59	0	0	3	0

Continued on next page...

Continued from previous page...

Mol	Chain	Non-H	H(model)	H(added)	Clashes	Symm-Clashes
3	G	48	0	0	0	0
3	H	75	0	0	0	0
All	All	19074	0	18565	940	0

The all-atom clashscore is defined as the number of clashes found per 1000 atoms (including hydrogen atoms). The all-atom clashscore for this structure is 25.

The worst 5 of 940 close contacts within the same asymmetric unit are listed below, sorted by their clash magnitude.

Atom-1	Atom-2	Interatomic distance (Å)	Clash overlap (Å)
1:F:34:LEU:HG	2:F:902:LMT:H6D	1.18	1.18
1:B:77:THR:HB	1:B:79:LEU:HD12	1.28	1.07
1:H:67:LYS:NZ	2:H:902:LMT:H6'2	1.73	1.03
1:D:266:MET:HE2	1:D:267:ALA:H	1.21	1.02
1:G:245:TYR:HE1	2:G:902:LMT:H4O1	1.03	1.01

There are no symmetry-related clashes.

5.3 Torsion angles [i](#)

5.3.1 Protein backbone [i](#)

In the following table, the Percentiles column shows the percent Ramachandran outliers of the chain as a percentile score with respect to all X-ray entries followed by that with respect to entries of similar resolution.

The Analysed column shows the number of residues for which the backbone conformation was analysed, and the total number of residues.

Mol	Chain	Analysed	Favoured	Allowed	Outliers	Percentiles	
1	A	262/343 (76%)	239 (91%)	19 (7%)	4 (2%)	12	42
1	B	332/343 (97%)	300 (90%)	25 (8%)	7 (2%)	8	32
1	C	262/343 (76%)	241 (92%)	18 (7%)	3 (1%)	17	50
1	D	330/343 (96%)	296 (90%)	25 (8%)	9 (3%)	6	26
1	E	268/343 (78%)	251 (94%)	15 (6%)	2 (1%)	25	61
1	F	330/343 (96%)	297 (90%)	29 (9%)	4 (1%)	15	47
1	G	265/343 (77%)	247 (93%)	15 (6%)	3 (1%)	17	50
1	H	331/343 (96%)	298 (90%)	28 (8%)	5 (2%)	12	42

Continued on next page...

Continued from previous page...

Mol	Chain	Analysed	Favoured	Allowed	Outliers	Percentiles	
All	All	2380/2744 (87%)	2169 (91%)	174 (7%)	37 (2%)	11	40

5 of 37 Ramachandran outliers are listed below:

Mol	Chain	Res	Type
1	A	167	ALA
1	B	32	LEU
1	B	167	ALA
1	C	167	ALA
1	D	167	ALA

5.3.2 Protein sidechains ⓘ

In the following table, the Percentiles column shows the percent sidechain outliers of the chain as a percentile score with respect to all X-ray entries followed by that with respect to entries of similar resolution.

The Analysed column shows the number of residues for which the sidechain conformation was analysed, and the total number of residues.

Mol	Chain	Analysed	Rotameric	Outliers	Percentiles	
1	A	207/270 (77%)	187 (90%)	20 (10%)	9	32
1	B	262/270 (97%)	240 (92%)	22 (8%)	13	41
1	C	207/270 (77%)	183 (88%)	24 (12%)	6	24
1	D	260/270 (96%)	235 (90%)	25 (10%)	10	33
1	E	213/270 (79%)	193 (91%)	20 (9%)	10	35
1	F	260/270 (96%)	235 (90%)	25 (10%)	10	33
1	G	210/270 (78%)	178 (85%)	32 (15%)	3	13
1	H	261/270 (97%)	236 (90%)	25 (10%)	10	33
All	All	1880/2160 (87%)	1687 (90%)	193 (10%)	8	29

5 of 193 residues with a non-rotameric sidechain are listed below:

Mol	Chain	Res	Type
1	D	266	MET
1	E	252	ARG
1	H	131	ARG
1	D	315	ASP
1	E	90	ARG

Some sidechains can be flipped to improve hydrogen bonding and reduce clashes. 5 of 24 such sidechains are listed below:

Mol	Chain	Res	Type
1	C	193	ASN
1	D	124	GLN
1	G	165	GLN
1	C	199	ASN
1	D	18	GLN

5.3.3 RNA ⓘ

There are no RNA molecules in this entry.

5.4 Non-standard residues in protein, DNA, RNA chains ⓘ

There are no non-standard protein/DNA/RNA residues in this entry.

5.5 Carbohydrates ⓘ

There are no carbohydrates in this entry.

5.6 Ligand geometry ⓘ

8 ligands are modelled in this entry.

In the following table, the Counts columns list the number of bonds (or angles) for which Mogul statistics could be retrieved, the number of bonds (or angles) that are observed in the model and the number of bonds (or angles) that are defined in the chemical component dictionary. The Link column lists molecule types, if any, to which the group is linked. The Z score for a bond length (or angle) is the number of standard deviations the observed value is removed from the expected value. A bond length (or angle) with $|Z| > 2$ is considered an outlier worth inspection. RMSZ is the root-mean-square of all Z scores of the bond lengths (or angles).

Mol	Type	Chain	Res	Link	Bond lengths			Bond angles		
					Counts	RMSZ	$\# Z > 2$	Counts	RMSZ	$\# Z > 2$
2	LMT	E	901	-	36,36,36	0.88	2 (5%)	47,47,47	1.01	2 (4%)
2	LMT	F	901	-	36,36,36	0.99	2 (5%)	47,47,47	0.95	3 (6%)
2	LMT	F	902	-	36,36,36	1.11	3 (8%)	47,47,47	1.09	3 (6%)
2	LMT	G	901	-	36,36,36	0.95	2 (5%)	47,47,47	1.17	5 (10%)
2	LMT	G	902	-	36,36,36	1.07	1 (2%)	47,47,47	0.81	2 (4%)
2	LMT	H	901	-	36,36,36	0.80	1 (2%)	47,47,47	0.60	0

Mol	Type	Chain	Res	Link	Bond lengths			Bond angles		
					Counts	RMSZ	# Z > 2	Counts	RMSZ	# Z > 2
2	LMT	H	902	-	36,36,36	1.03	1 (2%)	47,47,47	0.89	2 (4%)
2	LMT	H	903	-	36,36,36	1.18	3 (8%)	47,47,47	0.81	2 (4%)

In the following table, the Chirals column lists the number of chiral outliers, the number of chiral centers analysed, the number of these observed in the model and the number defined in the chemical component dictionary. Similar counts are reported in the Torsion and Rings columns. '-' means no outliers of that kind were identified.

Mol	Type	Chain	Res	Link	Chirals	Torsions	Rings
2	LMT	E	901	-	-	0/21/61/61	0/2/2/2
2	LMT	F	901	-	-	0/21/61/61	0/2/2/2
2	LMT	F	902	-	-	0/21/61/61	0/2/2/2
2	LMT	G	901	-	-	0/21/61/61	0/2/2/2
2	LMT	G	902	-	-	0/21/61/61	0/2/2/2
2	LMT	H	901	-	-	0/21/61/61	0/2/2/2
2	LMT	H	902	-	-	0/21/61/61	0/2/2/2
2	LMT	H	903	-	-	0/21/61/61	0/2/2/2

The worst 5 of 15 bond length outliers are listed below:

Mol	Chain	Res	Type	Atoms	Z	Observed(Å)	Ideal(Å)
2	F	901	LMT	C3'-C4'	2.03	1.57	1.52
2	E	901	LMT	O5B-C1B	2.07	1.47	1.41
2	F	902	LMT	C1B-C2B	2.11	1.58	1.52
2	H	903	LMT	C1B-C2B	2.12	1.58	1.52
2	H	903	LMT	O5B-C1B	2.17	1.47	1.41

The worst 5 of 19 bond angle outliers are listed below:

Mol	Chain	Res	Type	Atoms	Z	Observed(°)	Ideal(°)
2	G	901	LMT	O5B-C1B-C2B	-3.22	104.08	110.30
2	E	901	LMT	O1B-C1B-O5B	-2.11	105.56	110.70
2	G	901	LMT	C4B-C3B-C2B	2.00	114.37	110.84
2	G	901	LMT	C1B-O1B-C4'	2.03	122.95	118.00
2	F	901	LMT	C6'-C5'-C4'	2.08	118.90	113.24

There are no chirality outliers.

There are no torsion outliers.

There are no ring outliers.

8 monomers are involved in 71 short contacts:

Mol	Chain	Res	Type	Clashes	Symm-Clashes
2	E	901	LMT	9	0
2	F	901	LMT	8	0
2	F	902	LMT	11	0
2	G	901	LMT	4	0
2	G	902	LMT	13	0
2	H	901	LMT	7	0
2	H	902	LMT	16	0
2	H	903	LMT	7	0

5.7 Other polymers [i](#)

There are no such residues in this entry.

5.8 Polymer linkage issues [i](#)

There are no chain breaks in this entry.

6 Fit of model and data [i](#)

6.1 Protein, DNA and RNA chains [i](#)

In the following table, the column labelled ‘#RSRZ > 2’ contains the number (and percentage) of RSRZ outliers, followed by percent RSRZ outliers for the chain as percentile scores relative to all X-ray entries and entries of similar resolution. The OWAB column contains the minimum, median, 95th percentile and maximum values of the occupancy-weighted average B-factor per residue. The column labelled ‘Q < 0.9’ lists the number of (and percentage) of residues with an average occupancy less than 0.9.

Mol	Chain	Analysed	<RSRZ>	#RSRZ > 2	OWAB(Å ²)	Q < 0.9
1	A	264/343 (76%)	-0.70	2 (0%) 86 69	30, 45, 76, 122	0
1	B	334/343 (97%)	-0.49	6 (1%) 69 45	28, 56, 102, 130	0
1	C	264/343 (76%)	-0.67	3 (1%) 80 61	31, 47, 83, 127	0
1	D	332/343 (96%)	-0.50	6 (1%) 69 45	31, 57, 105, 134	0
1	E	270/343 (78%)	-0.71	2 (0%) 87 72	29, 52, 81, 109	0
1	F	332/343 (96%)	-0.54	10 (3%) 51 26	28, 50, 128, 148	0
1	G	267/343 (77%)	-0.70	2 (0%) 87 72	28, 50, 72, 118	0
1	H	333/343 (97%)	-0.44	16 (4%) 31 14	29, 49, 134, 151	0
All	All	2396/2744 (87%)	-0.58	47 (1%) 65 42	28, 51, 111, 151	0

The worst 5 of 47 RSRZ outliers are listed below:

Mol	Chain	Res	Type	RSRZ
1	B	193	ASN	7.6
1	D	193	ASN	7.0
1	H	264	GLY	6.2
1	C	193	ASN	5.6
1	F	263	ALA	5.2

6.2 Non-standard residues in protein, DNA, RNA chains [i](#)

There are no non-standard protein/DNA/RNA residues in this entry.

6.3 Carbohydrates [i](#)

There are no carbohydrates in this entry.

6.4 Ligands [i](#)

In the following table, the Atoms column lists the number of modelled atoms in the group and the number defined in the chemical component dictionary. LLDF column lists the quality of electron density of the group with respect to its neighbouring residues in protein, DNA or RNA chains. The B-factors column lists the minimum, median, 95th percentile and maximum values of B factors of atoms in the group. The column labelled 'Q< 0.9' lists the number of atoms with occupancy less than 0.9.

Mol	Type	Chain	Res	Atoms	RSCC	RSR	LLDF	B-factors(Å ²)	Q<0.9
2	LMT	G	902	35/35	0.59	0.68	7.23	98,146,157,159	0
2	LMT	H	902	35/35	0.75	0.37	6.09	91,144,159,159	0
2	LMT	H	903	35/35	0.67	0.43	4.07	98,125,148,148	0
2	LMT	F	902	35/35	0.79	0.32	3.90	71,121,126,126	0
2	LMT	H	901	35/35	0.91	0.23	3.18	94,108,113,114	0
2	LMT	F	901	35/35	0.89	0.24	2.99	77,111,113,114	0
2	LMT	E	901	35/35	0.90	0.22	1.92	72,97,100,102	0
2	LMT	G	901	35/35	0.91	0.21	1.34	65,88,94,95	0

6.5 Other polymers [i](#)

There are no such residues in this entry.