



Full wwPDB X-ray Structure Validation Report ⓘ

Feb 15, 2017 – 01:49 am GMT

PDB ID : 5B0W
Title : Crystal structure of the 11-cis isomer of pharaonis halorhodopsin in the absence of halide ions
Authors : Kouyama, T.; Chan, S.K.
Deposited on : 2015-11-11
Resolution : 1.70 Å(reported)

This is a Full wwPDB X-ray Structure Validation Report for a publicly released PDB entry.

We welcome your comments at validation@mail.wwpdb.org

A user guide is available at

<http://wwpdb.org/validation/2016/XrayValidationReportHelp>

with specific help available everywhere you see the ⓘ symbol.

The following versions of software and data (see [references ⓘ](#)) were used in the production of this report:

MolProbity : 4.02b-467
Mogul : 1.7.2 (RC1), CSD as538be (2017)
Xtriage (Phenix) : 1.9-1692
EDS : trunk28683
Percentile statistics : 20161228.v01 (using entries in the PDB archive December 28th 2016)
Refmac : 5.8.0135
CCP4 : 6.5.0
Ideal geometry (proteins) : Engh & Huber (2001)
Ideal geometry (DNA, RNA) : Parkinson et al. (1996)
Validation Pipeline (wwPDB-VP) : recalc28949

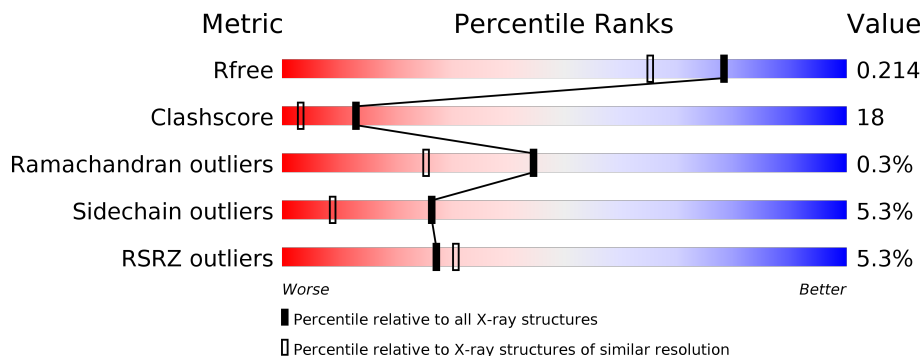
1 Overall quality at a glance

The following experimental techniques were used to determine the structure:

X-RAY DIFFRACTION

The reported resolution of this entry is 1.70 Å.

Percentile scores (ranging between 0-100) for global validation metrics of the entry are shown in the following graphic. The table shows the number of entries on which the scores are based.



Metric	Whole archive (#Entries)	Similar resolution (#Entries, resolution range(Å))
R_{free}	100719	3453 (1.70-1.70)
Clashscore	112137	3876 (1.70-1.70)
Ramachandran outliers	110173	3815 (1.70-1.70)
Sidechain outliers	110143	3815 (1.70-1.70)
RSRZ outliers	101464	3491 (1.70-1.70)

The table below summarises the geometric issues observed across the polymeric chains and their fit to the electron density. The red, orange, yellow and green segments on the lower bar indicate the fraction of residues that contain outliers for ≥ 3 , 2, 1 and 0 types of geometric quality criteria. A grey segment represents the fraction of residues that are not modelled. The numeric value for each fraction is indicated below the corresponding segment, with a dot representing fractions $\leq 5\%$. The upper red bar (where present) indicates the fraction of residues that have poor fit to the electron density. The numeric value is given above the bar.

Mol	Chain	Length	Quality of chain
1	A	291	<div> <div>4%</div> <div> <div></div> <div>60%</div> <div>25%</div> <div>•</div> <div>10%</div> </div> </div>
1	B	291	<div> <div>4%</div> <div> <div></div> <div>56%</div> <div>31%</div> <div>•</div> <div>11%</div> </div> </div>
1	D	291	<div> <div>6%</div> <div> <div></div> <div>63%</div> <div>24%</div> <div>•</div> <div>11%</div> </div> </div>
1	E	291	<div> <div>3%</div> <div> <div></div> <div>73%</div> <div>15%</div> <div>•</div> <div>11%</div> </div> </div>
1	F	291	<div> <div>5%</div> <div> <div></div> <div>73%</div> <div>16%</div> <div>•</div> <div>11%</div> </div> </div>
1	G	291	<div> <div>5%</div> <div> <div></div> <div>73%</div> <div>15%</div> <div>•</div> <div>11%</div> </div> </div>

The following table lists non-polymeric compounds, carbohydrate monomers and non-standard residues in protein, DNA, RNA chains that are outliers for geometric or electron-density-fit criteria:

Mol	Type	Chain	Res	Chirality	Geometry	Clashes	Electron density
3	22B	A	302	-	-	X	X
4	L3P	A	303	-	-	-	X
4	L3P	A	304	-	-	-	X
4	L3P	B	302	-	-	-	X
4	L3P	F	302	-	-	-	X
4	L3P	F	303	-	-	-	X
4	L3P	G	302	-	-	-	X
5	BNG	A	306	-	-	-	X
5	BNG	A	307	-	-	-	X
5	BNG	B	303	-	-	-	X
5	BNG	G	303	-	-	-	X
5	BNG	G	304	-	-	-	X

2 Entry composition [i](#)

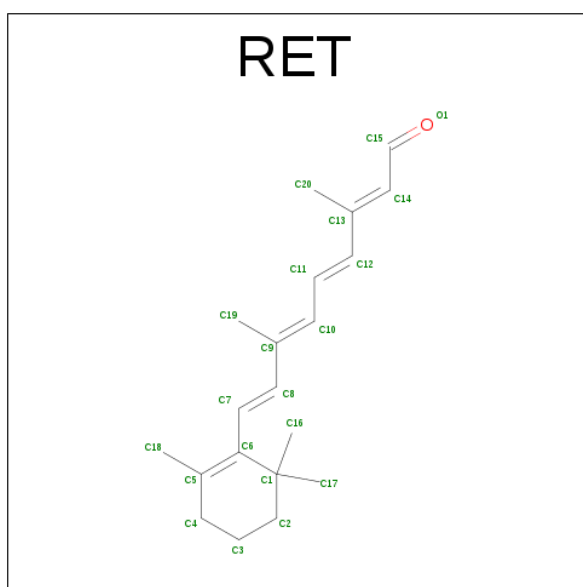
There are 7 unique types of molecules in this entry. The entry contains 12650 atoms, of which 0 are hydrogens and 0 are deuteriums.

In the tables below, the ZeroOcc column contains the number of atoms modelled with zero occupancy, the AltConf column contains the number of residues with at least one atom in alternate conformation and the Trace column contains the number of residues modelled with at most 2 atoms.

- Molecule 1 is a protein called Halorhodopsin.

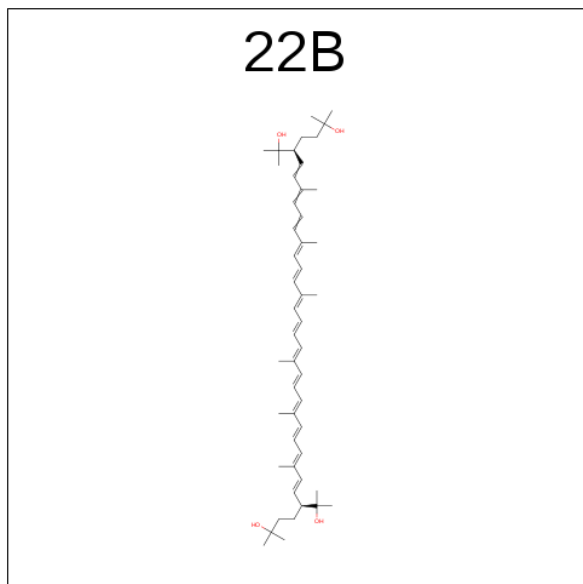
Mol	Chain	Residues	Atoms					ZeroOcc	AltConf	Trace
1	A	261	Total	C	N	O	S	0	261	0
			1971	1308	300	352	11			
1	B	260	Total	C	N	O	S	0	260	0
			1963	1302	299	351	11			
1	D	259	Total	C	N	O	S	0	259	0
			1957	1299	298	349	11			
1	E	260	Total	C	N	O	S	0	260	0
			1963	1302	299	351	11			
1	F	260	Total	C	N	O	S	0	260	0
			1963	1302	299	351	11			
1	G	259	Total	C	N	O	S	0	259	0
			1957	1299	298	349	11			

- Molecule 2 is RETINAL (three-letter code: RET) (formula: C₂₀H₂₈O).



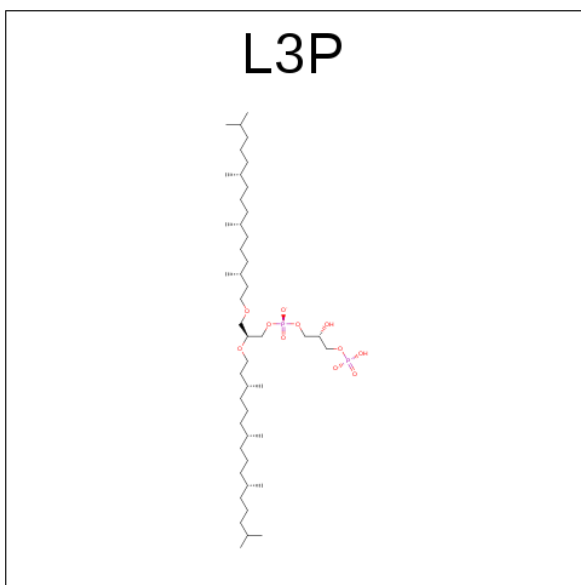
Mol	Chain	Residues	Atoms	ZeroOcc	AltConf
2	A	1	Total C 20 20	0	1
2	B	1	Total C 20 20	0	1
2	D	1	Total C 20 20	0	1
2	E	1	Total C 20 20	0	1
2	F	1	Total C 20 20	0	1
2	G	1	Total C 20 20	0	1

- Molecule 3 is BACTERIORUBERIN (three-letter code: 22B) (formula: $C_{50}H_{76}O_4$).



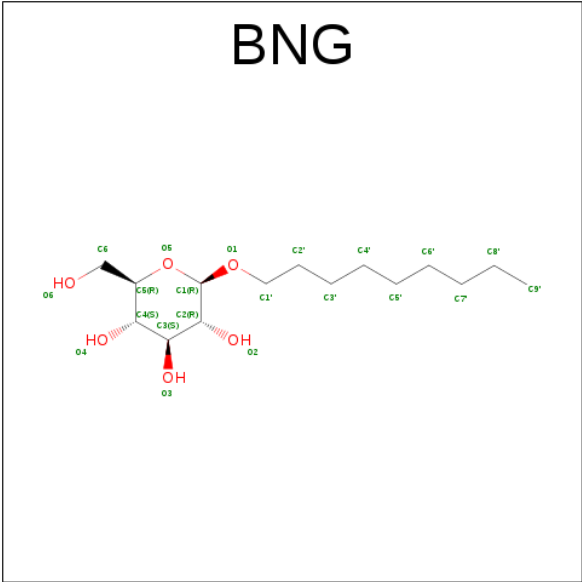
Mol	Chain	Residues	Atoms	ZeroOcc	AltConf
3	A	1	Total C O 37 35 2	0	0

- Molecule 4 is 2,3-DI-O-PHYTANLY-3-SN-GLYCERO-1-PHOSPHORYL-3'-SN-GLYCEROL-1'-PHOSPHATE (three-letter code: L3P) (formula: $C_{46}H_{94}O_{11}P_2$).



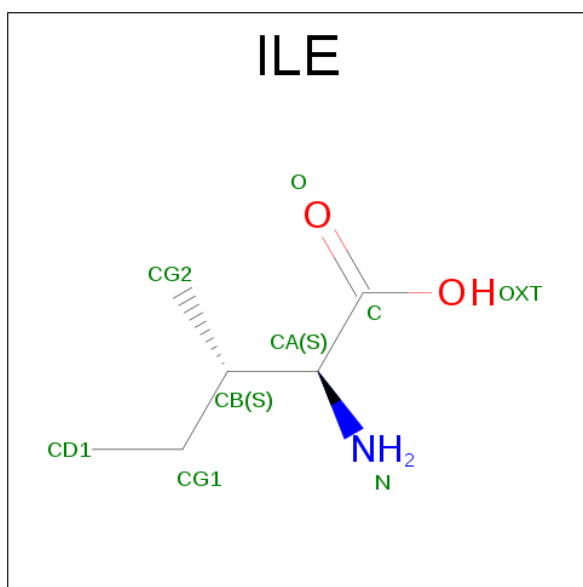
Mol	Chain	Residues	Atoms	ZeroOcc	AltConf
4	A	1	Total C 20 20	0	0
4	A	1	Total C 20 20	0	0
4	B	1	Total C 20 20	0	0
4	F	1	Total C 20 20	0	0
4	F	1	Total C 20 20	0	0
4	G	1	Total C 20 20	0	0

- Molecule 5 is B-NONYLGLUCOSIDE (three-letter code: BNG) (formula: $C_{15}H_{30}O_6$).



Mol	Chain	Residues	Atoms			ZeroOcc	AltConf
5	A	1	Total	C	O	0	0
			21	15	6		
5	A	1	Total	C	O	0	0
			21	15	6		
5	A	1	Total	C	O	0	0
			21	15	6		
5	B	1	Total	C	O	0	0
			21	15	6		
5	F	1	Total	C	O	0	0
			21	15	6		
5	G	1	Total	C	O	0	0
			21	15	6		
5	G	1	Total	C	O	0	0
			21	15	6		

- Molecule 6 is ISOLEUCINE (three-letter code: ILE) (formula: C₆H₁₃NO₂).



Mol	Chain	Residues	Atoms				ZeroOcc	AltConf
6	E	1	Total	C	N	O	0	1
			8	6	1	1		

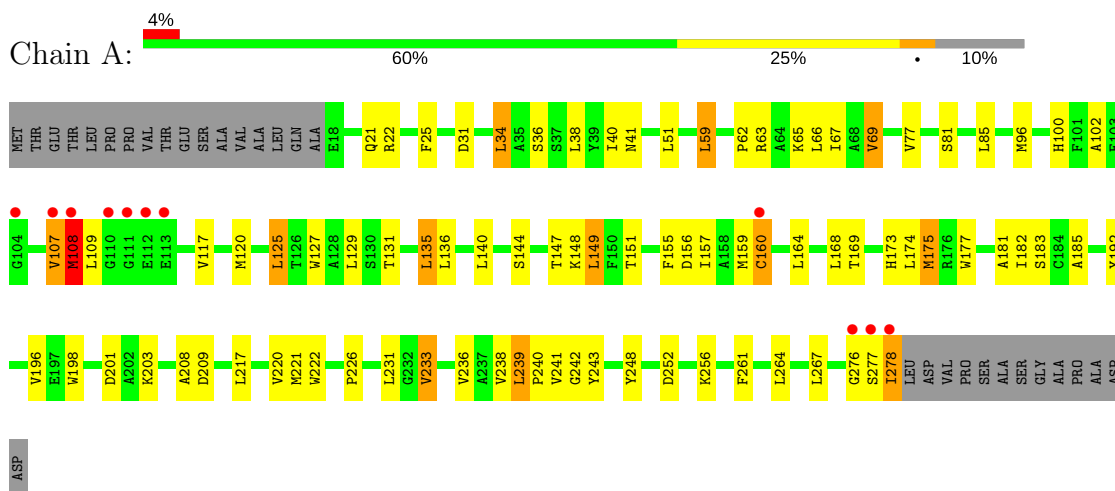
- Molecule 7 is water.

Mol	Chain	Residues	Atoms		ZeroOcc	AltConf
7	A	94	Total	O	0	94
			94	94		
7	B	78	Total	O	0	78
			78	78		
7	D	68	Total	O	0	68
			68	68		
7	E	69	Total	O	0	69
			69	69		
7	F	64	Total	O	0	64
			64	64		
7	G	71	Total	O	0	71
			71	71		

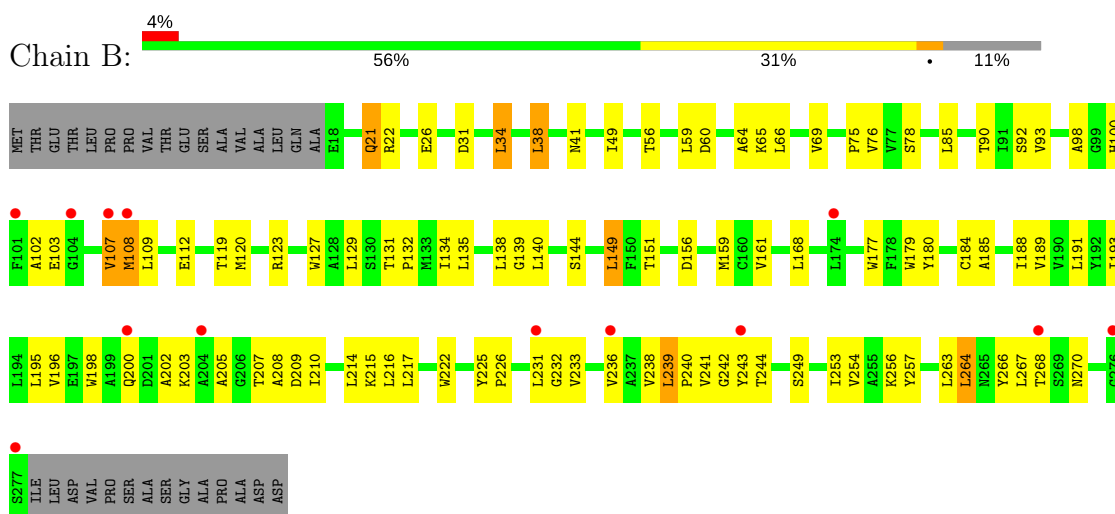
3 Residue-property plots

These plots are drawn for all protein, RNA and DNA chains in the entry. The first graphic for a chain summarises the proportions of the various outlier classes displayed in the second graphic. The second graphic shows the sequence view annotated by issues in geometry and electron density. Residues are color-coded according to the number of geometric quality criteria for which they contain at least one outlier: green = 0, yellow = 1, orange = 2 and red = 3 or more. A red dot above a residue indicates a poor fit to the electron density ($RSRZ > 2$). Stretches of 2 or more consecutive residues without any outlier are shown as a green connector. Residues present in the sample, but not in the model, are shown in grey.

• Molecule 1: Halorhodopsin

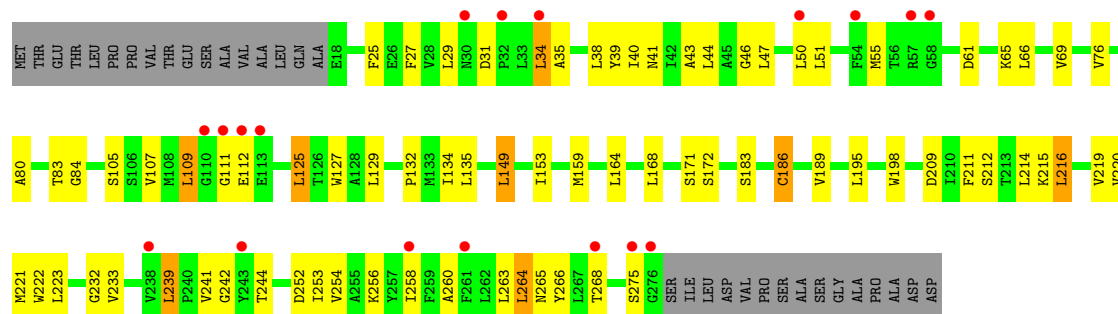


• Molecule 1: Halorhodopsin

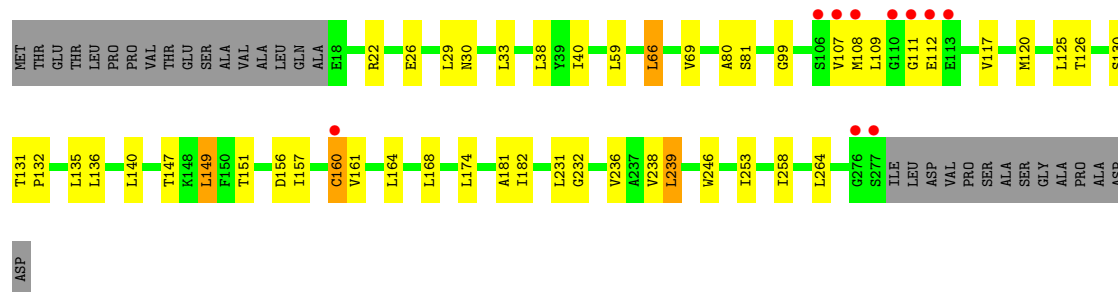
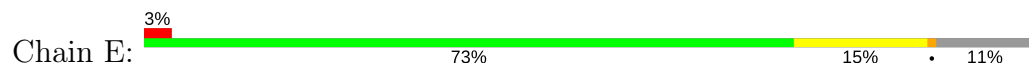


• Molecule 1: Halorhodopsin

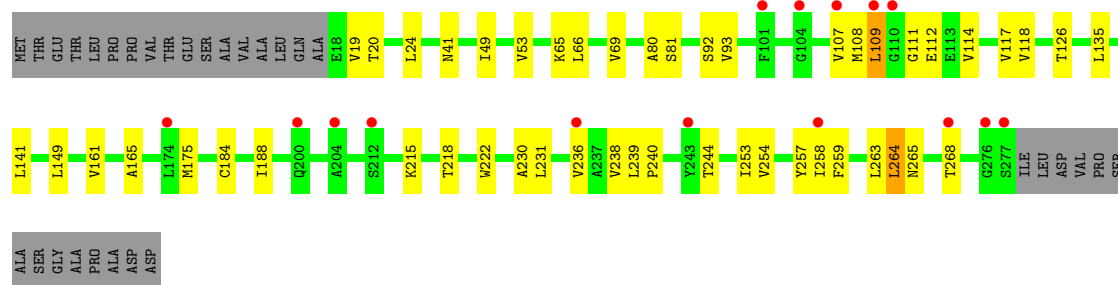
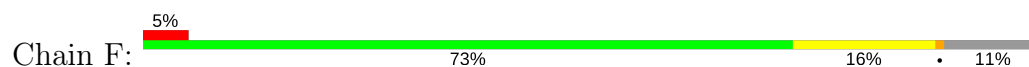




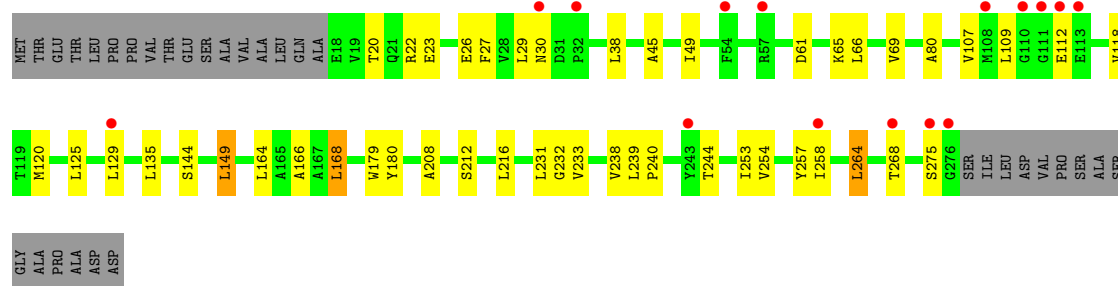
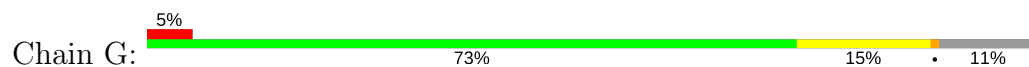
• Molecule 1: Halorhodopsin



• Molecule 1: Halorhodopsin



• Molecule 1: Halorhodopsin



4 Data and refinement statistics

Property	Value	Source
Space group	C 1 2 1	Depositor
Cell constants a, b, c, α , β , γ	154.32Å 97.93Å 101.53Å 90.00° 128.67° 90.00°	Depositor
Resolution (Å)	15.00 – 1.70 41.68 – 1.70	Depositor EDS
% Data completeness (in resolution range)	96.7 (15.00-1.70) 96.7 (41.68-1.70)	Depositor EDS
R_{merge}	0.06	Depositor
R_{sym}	0.06	Depositor
$\langle I/\sigma(I) \rangle$ ¹	2.40 (at 1.70Å)	Xtriage
Refinement program	CNS	Depositor
R, R_{free}	0.202 , 0.215 0.201 , 0.214	Depositor DCC
R_{free} test set	5461 reflections (4.37%)	DCC
Wilson B-factor (Å ²)	19.2	Xtriage
Anisotropy	0.105	Xtriage
Bulk solvent k_{sol} (e/Å ³), B_{sol} (Å ²)	0.40 , 68.5	EDS
L-test for twinning ²	$\langle L \rangle = 0.51$, $\langle L^2 \rangle = 0.34$	Xtriage
Estimated twinning fraction	0.008 for -h+k-l,-l,-k 0.000 for -h-k-l,l,k 0.012 for -h-2*l,-k,l	Xtriage
F_o, F_c correlation	0.94	EDS
Total number of atoms	12650	wwPDB-VP
Average B, all atoms (Å ²)	20.0	wwPDB-VP

Xtriage's analysis on translational NCS is as follows: *The largest off-origin peak in the Patterson function is 4.62% of the height of the origin peak. No significant pseudotranslation is detected.*

¹Intensities estimated from amplitudes.

²Theoretical values of $\langle |L| \rangle$, $\langle L^2 \rangle$ for acentric reflections are 0.5, 0.333 respectively for untwinned datasets, and 0.375, 0.2 for perfectly twinned datasets.

5 Model quality

5.1 Standard geometry

Bond lengths and bond angles in the following residue types are not validated in this section: BNG, RET, L3P, 22B

The Z score for a bond length (or angle) is the number of standard deviations the observed value is removed from the expected value. A bond length (or angle) with $|Z| > 5$ is considered an outlier worth inspection. RMSZ is the root-mean-square of all Z scores of the bond lengths (or angles).

Mol	Chain	Bond lengths		Bond angles	
		RMSZ	$\# Z > 5$	RMSZ	$\# Z > 5$
1	A	0.66	1/2017 (0.0%)	0.78	1/2762 (0.0%)
1	B	0.52	0/2009	0.71	0/2751
1	D	0.57	1/2003 (0.0%)	0.70	0/2743
1	E	0.54	0/2009	0.65	1/2751 (0.0%)
1	F	0.44	0/2009	0.59	0/2751
1	G	0.47	0/2003	0.58	0/2743
All	All	0.54	2/12050 (0.0%)	0.67	2/16501 (0.0%)

Chiral center outliers are detected by calculating the chiral volume of a chiral center and verifying if the center is modelled as a planar moiety or with the opposite hand. A planarity outlier is detected by checking planarity of atoms in a peptide group, atoms in a mainchain group or atoms of a sidechain that are expected to be planar.

Mol	Chain	#Chirality outliers	#Planarity outliers
1	A	0	1

All (2) bond length outliers are listed below:

Mol	Chain	Res	Type	Atoms	Z	Observed(Å)	Ideal(Å)
1	D	186[A]	CYS	CB-SG	-5.68	1.72	1.81
1	A	160[A]	CYS	CB-SG	-5.34	1.73	1.81

All (2) bond angle outliers are listed below:

Mol	Chain	Res	Type	Atoms	Z	Observed(°)	Ideal(°)
1	E	149[B]	LEU	CA-CB-CG	5.57	128.11	115.30
1	A	107[A]	VAL	N-CA-C	5.48	125.80	111.00

There are no chirality outliers.

All (1) planarity outliers are listed below:

Mol	Chain	Res	Type	Group
1	A	248[A]	TYR	Sidechain

5.2 Too-close contacts ⓘ

In the following table, the Non-H and H(model) columns list the number of non-hydrogen atoms and hydrogen atoms in the chain respectively. The H(added) column lists the number of hydrogen atoms added and optimized by MolProbity. The Clashes column lists the number of clashes within the asymmetric unit, whereas Symm-Clashes lists symmetry related clashes.

Mol	Chain	Non-H	H(model)	H(added)	Clashes	Symm-Clashes
1	A	1971	0	1898	122	0
1	B	1963	0	1871	107	0
1	D	1957	0	1900	81	0
1	E	1963	0	1868	54	0
1	F	1963	0	1836	39	0
1	G	1957	0	1850	34	0
2	A	20	0	17	5	0
2	B	20	0	14	5	0
2	D	20	0	18	2	0
2	E	20	0	13	0	0
2	F	20	0	13	0	0
2	G	20	0	15	2	0
3	A	37	0	49	46	0
4	A	40	0	78	11	0
4	B	20	0	39	1	0
4	F	40	0	78	14	0
4	G	20	0	39	6	0
5	A	63	0	90	3	0
5	B	21	0	30	3	0
5	F	21	0	30	2	0
5	G	42	0	60	2	0
6	E	8	0	10	0	0
7	A	94	0	0	8	0
7	B	78	0	0	7	0
7	D	68	0	0	3	0
7	E	69	0	0	3	0
7	F	64	0	0	5	0
7	G	71	0	0	2	0
All	All	12650	0	11816	439	0

The all-atom clashscore is defined as the number of clashes found per 1000 atoms (including hydrogen atoms). The all-atom clashscore for this structure is 18.

All (439) close contacts within the same asymmetric unit are listed below, sorted by their clash

magnitude.

Atom-1	Atom-2	Interatomic distance (Å)	Clash overlap (Å)
1:A:147[A]:THR:CG2	3:A:302:22B:H241	1.72	1.19
1:B:233[A]:VAL:H	1:B:244[A]:THR:HG21	1.06	1.15
1:D:254[A]:VAL:HG13	1:D:258[A]:ILE:HD11	1.18	1.12
1:A:147[A]:THR:HG22	3:A:302:22B:H241	1.14	1.12
1:D:164[A]:LEU:O	1:D:168[A]:LEU:HD13	1.57	1.04
1:A:131[A]:THR:O	1:A:135[A]:LEU:HD23	1.60	1.02
1:A:174[A]:LEU:HD13	5:A:305:BNG:H1'2	1.41	1.02
1:A:151[A]:THR:OG1	3:A:302:22B:H253	1.60	1.00
1:B:203[A]:LYS:HA	1:B:208[A]:ALA:HB2	1.44	0.99
1:E:157[B]:ILE:HA	1:E:160[B]:CYS:SG	2.03	0.98
1:D:233[A]:VAL:H	1:D:244[A]:THR:HG21	1.24	0.96
3:A:302:22B:H203	1:B:76[A]:VAL:HG13	1.46	0.95
1:A:66[A]:LEU:HD13	1:A:278[A]:ILE:HG21	1.52	0.92
1:A:181[A]:ALA:CB	3:A:302:22B:H261	2.02	0.90
3:A:302:22B:H15	3:A:302:22B:H42	1.54	0.90
1:A:135[A]:LEU:HD21	1:A:222[A]:TRP:HH2	1.40	0.86
3:A:302:22B:H261	1:E:181[B]:ALA:CB	2.06	0.85
1:B:233[A]:VAL:N	1:B:244[A]:THR:HG21	1.91	0.85
1:A:69[A]:VAL:HG22	7:A:474[A]:HOH:O	1.77	0.85
1:A:209[A]:ASP:OD1	7:A:401[A]:HOH:O	1.93	0.85
3:A:302:22B:H253	1:E:151[B]:THR:HG21	1.58	0.85
1:A:151[A]:THR:OG1	3:A:302:22B:C25	2.25	0.84
1:A:66[A]:LEU:HD22	1:A:140[A]:LEU:CD1	2.09	0.82
1:B:238[A]:VAL:HG23	1:B:239[A]:LEU:HD13	1.60	0.82
1:B:66[A]:LEU:O	1:B:66[A]:LEU:HD13	1.79	0.82
1:B:108[A]:MET:HA	1:B:112[A]:GLU:O	1.80	0.81
1:A:147[A]:THR:CG2	3:A:302:22B:C24	2.56	0.79
1:B:214[A]:LEU:CD1	1:B:263[A]:LEU:HD13	2.12	0.79
1:G:168[B]:LEU:HD11	4:G:302:L3P:H193	1.64	0.79
1:A:129[A]:LEU:HD13	4:A:304:L3P:H23	1.63	0.79
1:A:135[A]:LEU:HD21	1:A:222[A]:TRP:CH2	2.17	0.79
1:B:233[A]:VAL:H	1:B:244[A]:THR:CG2	1.92	0.78
1:A:151[A]:THR:CB	3:A:302:22B:H253	2.12	0.78
1:A:151[A]:THR:CB	3:A:302:22B:C25	2.60	0.78
1:A:164[A]:LEU:CD1	1:A:168[A]:LEU:HD21	2.14	0.78
1:A:66[A]:LEU:CD1	1:A:278[A]:ILE:HG21	2.14	0.77
1:D:254[A]:VAL:HA	1:D:258[A]:ILE:HG12	1.68	0.76
1:B:144[A]:SER:HB3	1:B:149[A]:LEU:HD13	1.68	0.75
1:D:254[A]:VAL:CG1	1:D:258[A]:ILE:HD11	2.08	0.75
1:A:231[A]:LEU:HB3	1:A:239[A]:LEU:HD11	1.69	0.74
1:A:144[A]:SER:OG	1:A:149[A]:LEU:HD13	1.88	0.74

Continued on next page...

Continued from previous page...

Atom-1	Atom-2	Interatomic distance (Å)	Clash overlap (Å)
1:D:164[A]:LEU:CD1	1:D:168[A]:LEU:HD11	2.17	0.74
1:A:66[A]:LEU:HD23	1:A:66[A]:LEU:O	1.89	0.73
1:B:233[A]:VAL:HG22	1:B:244[A]:THR:HG21	1.69	0.73
1:D:41[A]:ASN:HD21	1:D:253[A]:ILE:HD11	1.53	0.73
3:A:302:22B:H241	1:E:147[B]:THR:HG22	1.70	0.73
1:G:164[B]:LEU:HD21	4:G:302:L3P:H251	1.70	0.72
1:E:22[B]:ARG:HD2	7:E:448[B]:HOH:O	1.87	0.72
4:F:302:L3P:H241	1:G:80[B]:ALA:HB3	1.72	0.72
1:B:41[A]:ASN:HD21	1:B:253[A]:ILE:HD11	1.54	0.72
1:B:144[A]:SER:CB	1:B:149[A]:LEU:HD13	2.20	0.71
1:B:129[A]:LEU:HD13	4:F:303:L3P:H23	1.73	0.71
1:D:80[A]:ALA:HB3	4:F:302:L3P:H241	1.72	0.71
1:A:59[A]:LEU:HD13	7:A:417[A]:HOH:O	1.90	0.71
1:A:220[A]:VAL:CG1	1:A:221[A]:MET:HE1	2.21	0.71
1:A:127[A]:TRP:CD1	2:A:301[A]:RET:H201	2.26	0.71
1:D:164[A]:LEU:HD12	1:D:168[A]:LEU:HD11	1.73	0.71
1:A:136[A]:LEU:C	1:A:136[A]:LEU:HD13	2.12	0.70
1:B:56[A]:THR:O	1:B:59[A]:LEU:HD13	1.92	0.70
1:D:159[A]:MET:HA	1:D:186[A]:CYS:SG	2.32	0.70
1:A:63[A]:ARG:HD2	1:A:277[A]:SER:O	1.91	0.69
1:B:75[A]:PRO:HA	1:B:78[A]:SER:HB3	1.74	0.69
1:A:231[A]:LEU:HB3	1:A:239[A]:LEU:CD1	2.23	0.69
1:E:81[B]:SER:HB3	1:E:126[B]:THR:OG1	1.93	0.69
1:A:135[A]:LEU:HD22	1:A:135[A]:LEU:N	2.08	0.68
1:A:63[A]:ARG:HG3	1:A:278[A]:ILE:HG23	1.74	0.68
1:A:231[A]:LEU:C	1:A:239[A]:LEU:HD13	2.14	0.68
1:F:254[B]:VAL:HA	1:F:258[B]:ILE:HG12	1.76	0.68
1:G:264[B]:LEU:O	1:G:268[B]:THR:HG22	1.95	0.67
1:G:233[B]:VAL:H	1:G:244[B]:THR:HG21	1.58	0.67
1:A:157[A]:ILE:O	1:A:160[A]:CYS:SG	2.53	0.67
1:A:236[A]:VAL:HG22	1:A:236[A]:VAL:O	1.94	0.66
1:E:156[B]:ASP:O	1:E:160[B]:CYS:SG	2.53	0.66
4:A:303:L3P:H243	1:E:164[B]:LEU:HD21	1.78	0.66
3:A:302:22B:H261	1:E:181[B]:ALA:HB1	1.77	0.66
1:A:129[A]:LEU:HD22	4:A:304:L3P:H262	1.76	0.66
1:A:238[A]:VAL:HG23	1:A:239[A]:LEU:HD12	1.77	0.66
1:A:164[A]:LEU:HD12	1:A:168[A]:LEU:HD21	1.77	0.66
1:F:108[B]:MET:HA	1:F:112[B]:GLU:O	1.96	0.66
1:A:147[A]:THR:HG21	3:A:302:22B:H241	1.77	0.66
1:G:240[B]:PRO:O	1:G:244[B]:THR:HG23	1.96	0.66
1:G:254[B]:VAL:HG13	1:G:258[B]:ILE:CD1	2.27	0.65

Continued on next page...

Continued from previous page...

Atom-1	Atom-2	Interatomic distance (Å)	Clash overlap (Å)
1:F:19[B]:VAL:HG11	1:F:109[B]:LEU:HD13	1.77	0.65
1:A:66[A]:LEU:HD22	1:A:140[A]:LEU:HD11	1.76	0.65
1:E:69[B]:VAL:HG22	7:G:445[B]:HOH:O	1.97	0.65
3:A:302:22B:C20	1:B:76[A]:VAL:HG13	2.22	0.65
3:A:302:22B:C25	1:E:151[B]:THR:HG21	2.26	0.65
1:D:41[A]:ASN:HD21	1:D:253[A]:ILE:CD1	2.09	0.65
1:G:254[B]:VAL:HG13	1:G:258[B]:ILE:HD11	1.78	0.64
1:E:236[B]:VAL:HG13	1:E:238[B]:VAL:HG13	1.78	0.64
1:F:80[B]:ALA:HB3	4:F:303:L3P:H242	1.78	0.64
1:A:125[A]:LEU:HD23	4:A:304:L3P:H192	1.80	0.63
3:A:302:22B:H253	1:E:151[B]:THR:CG2	2.27	0.63
1:A:181[A]:ALA:HB1	3:A:302:22B:H261	1.80	0.63
1:F:184[B]:CYS:O	1:F:188[B]:ILE:HD13	1.98	0.63
1:A:107[A]:VAL:HG11	7:A:452[A]:HOH:O	1.98	0.63
1:E:157[B]:ILE:CA	1:E:160[B]:CYS:SG	2.84	0.63
1:A:164[A]:LEU:O	1:A:168[A]:LEU:CD2	2.46	0.63
1:E:231[B]:LEU:O	1:E:238[B]:VAL:HG22	1.98	0.63
1:E:29[B]:LEU:O	1:E:30[B]:ASN:HB2	1.99	0.63
1:F:240[B]:PRO:O	1:F:244[B]:THR:HG23	1.99	0.62
1:B:214[A]:LEU:HD11	1:B:263[A]:LEU:HD13	1.80	0.62
1:E:22[B]:ARG:O	1:E:26[B]:GLU:HG3	1.99	0.62
1:A:182[A]:ILE:HG23	3:A:302:22B:H14	1.81	0.62
1:A:220[A]:VAL:HG12	1:A:221[A]:MET:HE1	1.81	0.62
1:D:212[A]:SER:HA	1:D:215[A]:LYS:HE2	1.80	0.62
1:F:254[B]:VAL:HG13	1:F:258[B]:ILE:HD11	1.82	0.62
1:F:81[B]:SER:HB2	1:F:126[B]:THR:OG1	2.00	0.62
1:G:20[B]:THR:OG1	1:G:22[B]:ARG:HG2	2.00	0.61
1:A:135[A]:LEU:CD2	1:A:135[A]:LEU:N	2.63	0.61
1:D:189[A]:VAL:HG21	5:G:304:BNG:H3'2	1.82	0.61
1:D:41[A]:ASN:HD21	1:D:253[A]:ILE:CG1	2.11	0.61
1:F:161[B]:VAL:HG11	4:F:302:L3P:H221	1.83	0.61
1:B:131[A]:THR:O	1:B:135[A]:LEU:HD23	2.01	0.61
1:B:232[A]:GLY:HA3	1:B:244[A]:THR:HG22	1.83	0.61
1:D:164[A]:LEU:HD12	1:D:168[A]:LEU:CD1	2.31	0.61
1:B:217[A]:LEU:HD11	1:B:254[A]:VAL:HG12	1.82	0.60
1:D:183[A]:SER:O	1:D:186[A]:CYS:SG	2.59	0.60
1:F:111[B]:GLY:N	7:F:401[B]:HOH:O	2.34	0.60
1:B:232[A]:GLY:HA2	1:B:239[A]:LEU:HB2	1.83	0.60
1:B:232[A]:GLY:CA	1:B:244[A]:THR:HG22	2.32	0.60
1:D:65[A]:LYS:O	1:D:69[A]:VAL:HG23	2.02	0.60
1:B:236[A]:VAL:O	1:B:236[A]:VAL:HG22	2.01	0.60

Continued on next page...

Continued from previous page...

Atom-1	Atom-2	Interatomic distance (Å)	Clash overlap (Å)
1:F:258[B]:ILE:HG13	1:F:259[B]:PHE:N	2.16	0.60
1:B:90[A]:THR:HG22	4:F:303:L3P:H143	1.85	0.59
1:B:149[A]:LEU:HD12	1:B:198[A]:TRP:CZ2	2.38	0.59
1:B:127[A]:TRP:CD1	2:B:301[A]:RET:H201	2.37	0.59
1:A:21[A]:GLN:HG2	1:D:171[A]:SER:HB3	1.85	0.59
1:A:159[A]:MET:SD	2:A:301[A]:RET:H192	2.43	0.59
1:B:109[A]:LEU:HA	7:B:432[A]:HOH:O	2.02	0.58
1:A:66[A]:LEU:HD13	1:A:278[A]:ILE:CG2	2.31	0.58
1:B:134[A]:ILE:HD11	1:B:256[A]:LYS:HE2	1.85	0.58
1:B:65[A]:LYS:NZ	7:B:404[A]:HOH:O	2.37	0.58
1:A:151[A]:THR:CG2	3:A:302:22B:H253	2.31	0.58
1:A:164[A]:LEU:O	1:A:168[A]:LEU:HD23	2.03	0.58
1:B:268[A]:THR:HG23	7:B:447[A]:HOH:O	2.03	0.58
1:G:168[B]:LEU:HD21	4:G:302:L3P:H221	1.86	0.58
1:D:233[A]:VAL:HG22	1:D:244[A]:THR:HG21	1.86	0.58
1:A:151[A]:THR:HG21	3:A:302:22B:H253	1.86	0.58
1:F:264[B]:LEU:O	1:F:268[B]:THR:HG22	2.04	0.58
7:F:407[B]:HOH:O	1:G:65[B]:LYS:HE2	2.04	0.58
1:E:107[B]:VAL:HG23	1:E:109[B]:LEU:HD13	1.86	0.57
1:B:66[A]:LEU:HD13	1:B:66[A]:LEU:C	2.24	0.57
1:A:65[A]:LYS:O	1:A:69[A]:VAL:HG23	2.04	0.57
1:B:93[A]:VAL:HG21	1:B:109[A]:LEU:CD1	2.34	0.57
1:B:256[A]:LYS:HG3	7:B:436[A]:HOH:O	2.04	0.57
1:A:217[A]:LEU:HD12	1:A:221[A]:MET:HE3	1.87	0.57
1:B:144[A]:SER:HB3	1:B:149[A]:LEU:CD1	2.35	0.57
1:B:41[A]:ASN:HD21	1:B:253[A]:ILE:CD1	2.16	0.57
1:A:181[A]:ALA:HB3	3:A:302:22B:H261	1.79	0.57
1:B:180[A]:TYR:OH	1:B:226[A]:PRO:O	2.23	0.57
1:B:202[A]:ALA:O	1:B:203[A]:LYS:C	2.43	0.56
1:F:109[B]:LEU:HD12	1:F:114[B]:VAL:HB	1.88	0.56
4:A:303:L3P:C24	1:E:164[B]:LEU:HD21	2.35	0.56
1:A:63[A]:ARG:HB2	1:A:276[A]:GLY:O	2.05	0.56
1:B:207[A]:THR:HG22	1:B:266[A]:TYR:OH	2.05	0.55
1:B:135[A]:LEU:HD21	1:B:222[A]:TRP:HH2	1.70	0.55
1:B:139[A]:GLY:HA3	1:B:149[A]:LEU:HD11	1.88	0.55
1:F:161[B]:VAL:CG1	4:F:302:L3P:H221	2.35	0.55
1:F:141[B]:LEU:HD22	1:F:263[B]:LEU:HD13	1.87	0.55
1:D:31[A]:ASP:OD2	1:D:34[A]:LEU:HD22	2.07	0.54
1:B:151[A]:THR:CG2	1:B:193[A]:ILE:HD11	2.38	0.54
1:D:214[A]:LEU:CD1	1:D:263[A]:LEU:HD13	2.38	0.54
1:D:127[A]:TRP:CD1	2:D:301[A]:RET:H201	2.43	0.54

Continued on next page...

Continued from previous page...

Atom-1	Atom-2	Interatomic distance (Å)	Clash overlap (Å)
1:D:134[A]:ILE:HD11	1:D:256[A]:LYS:HD3	1.90	0.54
1:A:66[A]:LEU:HD21	1:A:136[A]:LEU:HD11	1.89	0.54
1:D:168[A]:LEU:HD12	1:D:168[A]:LEU:N	2.22	0.54
1:B:66[A]:LEU:HD12	1:B:140[A]:LEU:HD13	1.89	0.54
1:B:236[A]:VAL:HG13	1:B:238[A]:VAL:HG13	1.90	0.54
1:A:151[A]:THR:HG21	3:A:302:22B:C25	2.37	0.53
1:D:46[A]:GLY:O	1:D:50[A]:LEU:HG	2.08	0.53
1:B:226[A]:PRO:HB3	2:B:301[A]:RET:H183	1.89	0.53
1:G:120[B]:MET:HG2	7:G:437[B]:HOH:O	2.08	0.53
1:A:168[A]:LEU:HD12	4:A:303:L3P:H193	1.91	0.53
1:A:185[A]:ALA:HB1	3:A:302:22B:H12	1.91	0.53
1:B:21[A]:GLN:HG3	7:B:422[A]:HOH:O	2.07	0.53
1:B:144[A]:SER:OG	1:B:149[A]:LEU:HD13	2.09	0.53
1:B:240[A]:PRO:O	1:B:244[A]:THR:HG23	2.09	0.53
1:E:238[B]:VAL:HG23	1:E:239[B]:LEU:HD13	1.91	0.53
1:G:168[B]:LEU:CD1	4:G:302:L3P:H193	2.35	0.53
1:B:151[A]:THR:HG22	1:B:193[A]:ILE:HD11	1.90	0.53
1:A:66[A]:LEU:HD23	1:A:66[A]:LEU:C	2.29	0.53
1:D:164[A]:LEU:HD11	1:D:168[A]:LEU:HD11	1.90	0.53
5:A:305:BNG:O2	1:E:99[B]:GLY:HA3	2.08	0.53
1:D:159[A]:MET:CA	1:D:186[A]:CYS:SG	2.96	0.53
1:A:236[A]:VAL:CG2	1:A:236[A]:VAL:O	2.57	0.52
1:D:260[A]:ALA:O	1:D:264[A]:LEU:HB2	2.09	0.52
1:A:108[A]:MET:HB2	7:A:403[A]:HOH:O	2.09	0.52
1:A:217[A]:LEU:HD12	1:A:221[A]:MET:CE	2.39	0.52
1:G:29[B]:LEU:O	1:G:30[B]:ASN:HB2	2.09	0.52
1:A:220[A]:VAL:HG12	1:A:221[A]:MET:CE	2.39	0.52
1:A:231[A]:LEU:O	1:A:239[A]:LEU:HD13	2.09	0.52
1:A:164[A]:LEU:HD12	1:A:168[A]:LEU:CD2	2.40	0.52
1:F:236[B]:VAL:HG13	1:F:238[B]:VAL:HG13	1.92	0.52
1:G:254[B]:VAL:HA	1:G:258[B]:ILE:HG12	1.92	0.52
1:F:141[B]:LEU:HD22	1:F:263[B]:LEU:CD1	2.40	0.52
1:D:40[A]:ILE:O	1:D:44[A]:LEU:HG	2.10	0.52
1:A:220[A]:VAL:HG11	1:A:221[A]:MET:HE1	1.92	0.51
1:A:59[A]:LEU:CD1	7:A:417[A]:HOH:O	2.54	0.51
1:G:216[B]:LEU:O	1:G:216[B]:LEU:HD13	2.10	0.51
1:A:151[A]:THR:HB	3:A:302:22B:C25	2.40	0.51
1:B:100[A]:HIS:HD1	1:B:102[A]:ALA:N	2.09	0.51
1:B:184[A]:CYS:O	1:B:188[A]:ILE:HG12	2.10	0.51
1:B:241[A]:VAL:HG13	1:B:242[A]:GLY:N	2.25	0.51
1:A:155[A]:PHE:CE1	3:A:302:22B:H10	2.45	0.51

Continued on next page...

Continued from previous page...

Atom-1	Atom-2	Interatomic distance (Å)	Clash overlap (Å)
1:B:134[A]:ILE:HD11	1:B:256[A]:LYS:CE	2.40	0.51
1:B:66[A]:LEU:HD12	1:B:140[A]:LEU:CD1	2.41	0.51
1:D:168[A]:LEU:N	1:D:168[A]:LEU:CD1	2.73	0.51
1:E:232[B]:GLY:HA2	1:E:239[B]:LEU:HB2	1.92	0.51
1:A:96[A]:MET:HG3	1:A:100[A]:HIS:CE1	2.46	0.51
1:D:129[A]:LEU:HD13	4:F:302:L3P:H23	1.92	0.51
1:A:164[A]:LEU:O	1:A:168[A]:LEU:HD22	2.11	0.51
3:A:302:22B:H15	3:A:302:22B:C42	2.35	0.51
1:G:65[B]:LYS:O	1:G:69[B]:VAL:HG23	2.11	0.51
1:D:164[A]:LEU:HD21	4:G:302:L3P:H251	1.93	0.50
1:D:51[A]:LEU:O	1:D:55[A]:MET:HG3	2.11	0.50
1:G:216[B]:LEU:C	1:G:216[B]:LEU:HD13	2.31	0.50
1:B:131[A]:THR:O	1:B:135[A]:LEU:CD2	2.59	0.50
1:D:254[A]:VAL:HA	1:D:258[A]:ILE:CG1	2.39	0.50
1:A:36[A]:SER:O	1:A:40[A]:ILE:HG12	2.12	0.50
1:B:107[A]:VAL:O	1:B:108[A]:MET:HB3	2.11	0.50
1:F:254[B]:VAL:HG13	1:F:258[B]:ILE:CD1	2.41	0.50
1:B:107[A]:VAL:O	1:B:108[A]:MET:CB	2.59	0.50
1:A:144[A]:SER:HB2	1:A:198[A]:TRP:NE1	2.27	0.50
1:E:33[B]:LEU:HD22	1:E:246[B]:TRP:CD1	2.46	0.50
1:B:64[A]:ALA:HB1	1:B:267[A]:LEU:HD11	1.93	0.50
1:B:85[A]:LEU:HD22	1:B:120[A]:MET:HB3	1.94	0.49
1:A:100[A]:HIS:HD1	1:A:102[A]:ALA:N	2.11	0.49
1:B:98[A]:ALA:HA	1:B:103[A]:GLU:OE1	2.13	0.49
1:D:27[A]:PHE:CE2	1:D:107[A]:VAL:HG23	2.47	0.49
1:G:61[B]:ASP:OD2	1:G:275[B]:SER:HA	2.12	0.49
1:A:66[A]:LEU:CD2	1:A:136[A]:LEU:HD11	2.43	0.49
1:B:222[A]:TRP:CE2	2:B:301[A]:RET:H12	2.47	0.49
1:A:147[A]:THR:HG21	3:A:302:22B:C24	2.39	0.49
1:D:159[A]:MET:HB2	1:D:186[A]:CYS:SG	2.53	0.49
1:D:233[A]:VAL:HG13	1:D:239[A]:LEU:O	2.13	0.49
1:D:35[A]:ALA:O	1:D:39[A]:TYR:HD1	1.95	0.49
1:E:174[B]:LEU:HD23	5:F:304:BNG:C4'	2.43	0.49
1:A:164[A]:LEU:HD11	1:A:168[A]:LEU:HD21	1.92	0.49
1:A:81[A]:SER:HA	4:A:304:L3P:H191	1.93	0.49
1:E:66[B]:LEU:HD13	1:E:140[B]:LEU:HD11	1.93	0.49
3:A:302:22B:C12	3:A:302:22B:H191	2.43	0.49
1:D:125[A]:LEU:HD11	4:G:302:L3P:H262	1.95	0.49
1:B:241[A]:VAL:O	1:B:244[A]:THR:OG1	2.31	0.49
3:A:302:22B:C25	1:E:151[B]:THR:CB	2.89	0.49
1:E:258[B]:ILE:N	1:E:258[B]:ILE:HD12	2.27	0.48

Continued on next page...

Continued from previous page...

Atom-1	Atom-2	Interatomic distance (Å)	Clash overlap (Å)
1:B:49[A]:ILE:HD11	1:B:76[A]:VAL:HA	1.95	0.48
1:D:220[A]:VAL:HG12	1:D:221[A]:MET:HE2	1.94	0.48
3:A:302:22B:H241	1:E:147[B]:THR:CG2	2.37	0.48
1:A:192[A]:TYR:CE2	1:A:196[A]:VAL:HG21	2.48	0.48
1:A:198[A]:TRP:HA	1:A:201[A]:ASP:HB2	1.95	0.48
1:B:241[A]:VAL:HG13	1:B:242[A]:GLY:H	1.79	0.48
1:B:41[A]:ASN:HD21	1:B:253[A]:ILE:CG1	2.26	0.48
1:B:264[A]:LEU:O	1:B:268[A]:THR:HG22	2.13	0.48
1:F:107[B]:VAL:O	1:F:108[B]:MET:HB3	2.13	0.48
1:D:159[A]:MET:CB	1:D:186[A]:CYS:SG	3.01	0.48
1:D:233[A]:VAL:N	1:D:244[A]:THR:HG21	2.09	0.48
1:B:123[A]:ARG:NH2	1:B:249[A]:SER:OG	2.42	0.48
1:B:177[A]:TRP:O	1:B:180[A]:TYR:HB3	2.14	0.48
1:D:111[A]:GLY:O	1:D:112[A]:GLU:HG2	2.13	0.48
1:D:233[A]:VAL:H	1:D:244[A]:THR:CG2	2.12	0.48
1:E:33[B]:LEU:HD22	1:E:246[B]:TRP:HD1	1.77	0.48
4:A:304:L3P:H211	1:E:80[B]:ALA:CB	2.44	0.48
1:A:144[A]:SER:CB	1:A:149[A]:LEU:HD13	2.44	0.48
1:B:22[A]:ARG:O	1:B:26[A]:GLU:HG3	2.13	0.48
1:D:254[A]:VAL:O	1:D:258[A]:ILE:CG1	2.62	0.48
1:D:164[A]:LEU:CD1	1:D:168[A]:LEU:CD1	2.90	0.48
1:B:200[A]:GLN:HE22	1:B:203[A]:LYS:NZ	2.11	0.47
3:A:302:22B:H14	1:E:182[B]:ILE:HA	1.95	0.47
1:B:135[A]:LEU:HD22	1:B:135[A]:LEU:N	2.29	0.47
1:A:169[A]:THR:HG21	1:A:175[A]:MET:HB3	1.97	0.47
1:A:240[A]:PRO:HD2	1:A:243[A]:TYR:HD1	1.78	0.47
1:E:258[B]:ILE:N	1:E:258[B]:ILE:CD1	2.78	0.47
1:F:117[B]:VAL:HG21	7:F:415[B]:HOH:O	2.13	0.47
1:F:93[B]:VAL:HG21	1:F:109[B]:LEU:HD11	1.96	0.47
1:F:80[B]:ALA:HB1	4:F:303:L3P:H211	1.97	0.47
1:A:151[A]:THR:CG2	3:A:302:22B:C25	2.92	0.47
1:D:241[A]:VAL:HG13	1:D:242[A]:GLY:N	2.30	0.47
1:F:231[B]:LEU:O	1:F:238[B]:VAL:HG22	2.14	0.47
1:A:203[A]:LYS:HA	1:A:208[A]:ALA:HB2	1.97	0.47
1:A:238[A]:VAL:HG23	1:A:239[A]:LEU:CD1	2.45	0.47
1:A:34[A]:LEU:HD13	1:A:242[A]:GLY:HA2	1.97	0.47
1:A:51[A]:LEU:HD21	1:A:261[A]:PHE:CE1	2.50	0.47
1:A:220[A]:VAL:CG1	1:A:221[A]:MET:CE	2.93	0.47
1:A:239[A]:LEU:N	1:A:239[A]:LEU:HD12	2.29	0.47
1:D:189[A]:VAL:CG2	5:G:304:BNG:H3'2	2.44	0.47
1:B:56[A]:THR:HA	1:B:59[A]:LEU:CD1	2.45	0.47

Continued on next page...

Continued from previous page...

Atom-1	Atom-2	Interatomic distance (Å)	Clash overlap (Å)
1:A:192[A]:TYR:CZ	1:A:196[A]:VAL:HG11	2.51	0.46
3:A:302:22B:H242	1:B:69[A]:VAL:HG21	1.97	0.46
1:G:45[B]:ALA:O	1:G:49[B]:ILE:HG13	2.15	0.46
1:D:239[A]:LEU:HB3	1:D:244[A]:THR:HG23	1.97	0.46
1:D:254[A]:VAL:O	1:D:258[A]:ILE:HG12	2.15	0.46
1:E:253[B]:ILE:O	1:E:258[B]:ILE:HD13	2.14	0.46
1:F:165[B]:ALA:HB2	4:F:302:L3P:H172	1.97	0.46
1:D:105[A]:SER:HB3	7:D:433[A]:HOH:O	2.15	0.46
1:A:164[A]:LEU:HD21	4:A:303:L3P:H243	1.98	0.46
1:E:29[B]:LEU:O	1:E:30[B]:ASN:CB	2.64	0.46
1:F:215[B]:LYS:NZ	7:F:402[B]:HOH:O	2.49	0.46
1:F:253[B]:ILE:HA	1:F:257[B]:TYR:CD2	2.50	0.46
1:G:180[B]:TYR:CD2	2:G:301[B]:RET:H32	2.51	0.46
1:E:26[B]:GLU:O	1:E:29[B]:LEU:O	2.34	0.46
4:F:302:L3P:H23	1:G:129[B]:LEU:HD13	1.98	0.46
1:E:125[B]:LEU:HD12	1:E:125[B]:LEU:N	2.31	0.46
1:B:135[A]:LEU:HD21	1:B:222[A]:TRP:CH2	2.50	0.45
1:D:132[A]:PRO:HB3	1:D:153[A]:ILE:HG23	1.99	0.45
1:D:149[A]:LEU:HD12	1:D:198[A]:TRP:CZ2	2.51	0.45
1:D:266[A]:TYR:CD2	1:D:266[A]:TYR:C	2.89	0.45
1:B:217[A]:LEU:HD11	1:B:254[A]:VAL:CG1	2.45	0.45
1:A:226[A]:PRO:HB3	2:A:301[A]:RET:H183	1.98	0.45
3:A:302:22B:H243	1:F:65[B]:LYS:HB3	1.98	0.45
1:B:270[A]:ASN:N	1:B:270[A]:ASN:HD22	2.14	0.45
1:A:217[A]:LEU:CD1	1:A:221[A]:MET:HE3	2.45	0.45
1:B:210[A]:ILE:HD13	1:B:266[A]:TYR:HB2	1.99	0.45
1:A:77[A]:VAL:HG11	1:A:129[A]:LEU:HB2	1.97	0.45
3:A:302:22B:H253	1:E:151[B]:THR:CB	2.46	0.45
1:F:49[B]:ILE:O	1:F:53[B]:VAL:HG23	2.17	0.45
1:B:189[A]:VAL:HG21	5:B:303:BNG:H3'2	1.99	0.45
1:B:257[A]:TYR:CD1	1:B:257[A]:TYR:N	2.83	0.45
1:B:93[A]:VAL:HG21	1:B:109[A]:LEU:HD13	1.98	0.45
1:B:131[A]:THR:OG1	1:B:156[A]:ASP:OD2	2.35	0.45
1:E:174[B]:LEU:HD23	5:F:304:BNG:H4'1	1.98	0.45
3:A:302:22B:H243	1:B:65[A]:LYS:HB3	1.99	0.45
1:G:125[B]:LEU:N	1:G:125[B]:LEU:HD12	2.31	0.45
1:G:208[B]:ALA:O	1:G:212[B]:SER:OG	2.35	0.45
1:B:233[A]:VAL:HG22	1:B:244[A]:THR:CG2	2.45	0.45
1:E:108[B]:MET:O	1:E:109[B]:LEU:HD12	2.17	0.45
3:A:302:22B:H14	1:E:182[B]:ILE:HG23	1.99	0.45
1:G:22[B]:ARG:O	1:G:26[B]:GLU:HG3	2.17	0.45

Continued on next page...

Continued from previous page...

Atom-1	Atom-2	Interatomic distance (Å)	Clash overlap (Å)
1:B:56[A]:THR:CA	1:B:59[A]:LEU:HD13	2.47	0.45
1:E:69[B]:VAL:HG23	7:E:461[B]:HOH:O	2.15	0.45
1:F:41[B]:ASN:HD22	1:F:41[B]:ASN:HA	1.58	0.45
3:A:302:22B:H242	1:F:69[B]:VAL:HG21	2.00	0.44
1:A:136[A]:LEU:C	1:A:136[A]:LEU:CD1	2.84	0.44
1:B:149[A]:LEU:HD12	1:B:198[A]:TRP:HZ2	1.79	0.44
1:A:151[A]:THR:OG1	3:A:302:22B:H251	2.15	0.44
1:A:31[A]:ASP:CG	1:A:34[A]:LEU:HD22	2.38	0.44
1:D:241[A]:VAL:CG1	1:D:242[A]:GLY:N	2.81	0.44
1:A:256[A]:LYS:HA	1:A:256[A]:LYS:HD3	1.73	0.44
1:B:238[A]:VAL:HG23	1:B:239[A]:LEU:CD1	2.40	0.44
1:B:159[A]:MET:SD	2:B:301[A]:RET:H192	2.57	0.44
1:D:61[A]:ASP:CG	1:D:275[A]:SER:HB2	2.37	0.44
1:E:117[B]:VAL:HG21	7:E:432[B]:HOH:O	2.16	0.44
1:A:66[A]:LEU:HD22	1:A:140[A]:LEU:HD13	1.96	0.44
1:A:233[A]:VAL:HG21	1:A:241[A]:VAL:HG23	2.00	0.44
1:B:195[A]:LEU:HA	1:B:215[A]:LYS:HD2	2.00	0.44
1:E:131[B]:THR:OG1	1:E:132[B]:PRO:HD3	2.18	0.44
1:F:20[B]:THR:O	1:F:24[B]:LEU:HD23	2.18	0.44
1:G:231[B]:LEU:HB3	1:G:239[B]:LEU:HD13	2.00	0.44
1:A:136[A]:LEU:CD1	1:A:140[A]:LEU:HD12	2.47	0.44
1:B:202[A]:ALA:O	1:B:205[A]:ALA:N	2.50	0.44
1:E:107[B]:VAL:CG2	1:E:109[B]:LEU:HD13	2.48	0.44
1:A:173[A]:HIS:HE2	1:A:177[A]:TRP:HE1	1.65	0.43
1:B:238[A]:VAL:CG2	1:B:239[A]:LEU:HD13	2.40	0.43
1:D:222[A]:TRP:CE2	2:D:301[A]:RET:H12	2.52	0.43
1:G:238[B]:VAL:HG23	1:G:239[B]:LEU:CD1	2.47	0.43
1:G:27[B]:PHE:CE1	1:G:118[B]:VAL:HG21	2.53	0.43
1:D:195[A]:LEU:HD21	1:D:219[A]:VAL:HG21	2.01	0.43
1:A:85[A]:LEU:HD22	1:A:120[A]:MET:HB3	2.00	0.43
1:D:41[A]:ASN:HD21	1:D:253[A]:ILE:HG12	1.81	0.43
1:G:144[B]:SER:OG	1:G:149[B]:LEU:HD22	2.18	0.43
1:B:131[A]:THR:OG1	1:B:132[A]:PRO:HD3	2.18	0.43
1:D:43[A]:ALA:O	1:D:47[A]:LEU:HG	2.19	0.43
1:F:107[B]:VAL:HG11	1:F:118[B]:VAL:HG23	2.01	0.43
1:E:126[B]:THR:O	1:E:130[B]:SER:OG	2.36	0.43
1:F:268[B]:THR:HG23	7:F:435[B]:HOH:O	2.18	0.43
3:A:302:22B:H242	1:F:69[B]:VAL:CG2	2.49	0.43
1:A:148[A]:LYS:NZ	7:A:410[A]:HOH:O	2.51	0.43
1:D:209[A]:ASP:HB2	7:D:459[A]:HOH:O	2.19	0.43
3:A:302:22B:C25	1:E:151[B]:THR:OG1	2.66	0.43

Continued on next page...

Continued from previous page...

Atom-1	Atom-2	Interatomic distance (Å)	Clash overlap (Å)
1:A:164[A]:LEU:HD21	4:A:303:L3P:C24	2.49	0.43
1:A:217[A]:LEU:O	1:A:221[A]:MET:HG2	2.18	0.43
1:A:252[A]:ASP:O	1:A:256[A]:LYS:HB2	2.19	0.43
3:A:302:22B:H202	1:B:49[A]:ILE:HD13	2.01	0.43
1:B:231[A]:LEU:O	1:B:238[A]:VAL:HG22	2.18	0.42
1:A:156[A]:ASP:O	1:A:159[A]:MET:HB3	2.19	0.42
1:B:60[A]:ASP:CA	1:B:65[A]:LYS:HE3	2.50	0.42
4:A:304:L3P:H211	1:E:80[B]:ALA:HB1	2.00	0.42
1:B:161[A]:VAL:HG11	4:F:302:L3P:H221	2.00	0.42
1:B:92[A]:SER:O	1:B:119[A]:THR:HB	2.19	0.42
1:D:239[A]:LEU:O	1:D:244[A]:THR:HG23	2.20	0.42
1:F:218[B]:THR:HG23	1:F:222[B]:TRP:NE1	2.34	0.42
1:F:238[B]:VAL:HG23	1:F:239[B]:LEU:CD1	2.49	0.42
4:F:303:L3P:H192	4:F:303:L3P:H152	2.02	0.42
1:G:232[B]:GLY:HA2	1:G:239[B]:LEU:HB2	2.00	0.42
1:G:253[B]:ILE:HA	1:G:257[B]:TYR:CD2	2.55	0.42
1:A:136[A]:LEU:HD13	1:A:140[A]:LEU:HD12	2.02	0.42
1:B:66[A]:LEU:CD1	1:B:66[A]:LEU:C	2.88	0.42
1:D:107[A]:VAL:HG13	1:D:109[A]:LEU:HD22	2.02	0.42
1:G:20[B]:THR:OG1	1:G:23[B]:GLU:HG3	2.20	0.42
7:B:439[A]:HOH:O	1:D:65[A]:LYS:HE2	2.19	0.42
1:F:230[B]:ALA:O	1:F:236[B]:VAL:HG12	2.19	0.42
1:D:254[A]:VAL:HA	1:D:258[A]:ILE:CD1	2.50	0.42
1:D:25[A]:PHE:O	1:D:29[A]:LEU:HG	2.19	0.42
1:F:238[B]:VAL:HG23	1:F:239[B]:LEU:HD13	2.01	0.42
1:E:161[B]:VAL:HG11	4:F:303:L3P:H221	2.02	0.42
1:B:240[A]:PRO:HD2	1:B:243[A]:TYR:CD1	2.55	0.42
1:D:212[A]:SER:O	1:D:216[A]:LEU:HB2	2.20	0.42
1:D:219[A]:VAL:O	1:D:223[A]:LEU:HG	2.19	0.42
1:A:77[A]:VAL:CG1	1:A:129[A]:LEU:HB2	2.49	0.41
1:B:225[A]:TYR:HB3	2:B:301[A]:RET:H161	2.02	0.41
4:B:302:L3P:H143	1:F:92[B]:SER:HB3	2.02	0.41
1:D:41[A]:ASN:ND2	1:D:253[A]:ILE:HD11	2.30	0.41
1:D:263[A]:LEU:HD12	1:D:263[A]:LEU:O	2.20	0.41
1:D:47[A]:LEU:HA	1:D:50[A]:LEU:HD12	2.02	0.41
1:E:236[B]:VAL:HG22	1:E:236[B]:VAL:O	2.19	0.41
1:D:254[A]:VAL:CA	1:D:258[A]:ILE:HG12	2.45	0.41
1:A:22[A]:ARG:NH1	7:A:412[A]:HOH:O	2.53	0.41
1:B:268[A]:THR:CG2	7:B:447[A]:HOH:O	2.66	0.41
1:D:252[A]:ASP:O	1:D:256[A]:LYS:HB2	2.20	0.41
1:A:183[A]:SER:OG	2:A:301[A]:RET:H31	2.19	0.41

Continued on next page...

Continued from previous page...

Atom-1	Atom-2	Interatomic distance (Å)	Clash overlap (Å)
1:A:67[A]:ILE:HG22	1:A:267[A]:LEU:HD22	2.02	0.41
1:D:241[A]:VAL:O	1:D:244[A]:THR:OG1	2.38	0.41
1:A:59[A]:LEU:N	1:A:59[A]:LEU:CD1	2.84	0.41
1:D:40[A]:ILE:N	1:D:40[A]:ILE:HD13	2.35	0.41
3:A:302:22B:H253	1:E:151[B]:THR:OG1	2.20	0.41
3:A:302:22B:H211	1:B:69[A]:VAL:CG2	2.51	0.41
1:E:22[B]:ARG:NH1	1:E:22[B]:ARG:HB3	2.35	0.41
1:B:179[A]:TRP:CZ2	1:D:83[A]:THR:HG22	2.55	0.41
5:B:303:BNG:H8'1	1:D:76[A]:VAL:HG22	2.03	0.41
1:B:38[A]:LEU:HD21	1:B:120[A]:MET:SD	2.61	0.41
1:A:66[A]:LEU:CD2	1:A:140[A]:LEU:HD11	2.46	0.41
1:D:149[A]:LEU:HD12	1:D:149[A]:LEU:HA	1.75	0.41
1:E:40[B]:ILE:HA	1:E:40[B]:ILE:HD13	1.95	0.41
1:E:108[B]:MET:HA	1:E:112[B]:GLU:O	2.20	0.41
1:A:168[A]:LEU:HD22	1:A:168[A]:LEU:N	2.36	0.40
1:B:185[A]:ALA:HB3	5:B:303:BNG:H9'2	2.02	0.40
1:A:222[A]:TRP:CE2	2:A:301[A]:RET:H12	2.56	0.40
1:D:211[A]:PHE:HD2	7:D:409[A]:HOH:O	2.04	0.40
1:D:232[A]:GLY:CA	1:D:244[A]:THR:HG22	2.51	0.40
1:B:188[A]:ILE:HD13	1:B:191[A]:LEU:HD12	2.03	0.40
1:G:107[B]:VAL:HG22	1:G:109[B]:LEU:HD13	2.03	0.40
1:A:136[A]:LEU:HD11	1:A:140[A]:LEU:HD11	2.03	0.40
2:G:301[B]:RET:H7	2:G:301[B]:RET:H181	1.87	0.40
1:A:25[A]:PHE:HZ	5:A:307:BNG:H1'2	1.87	0.40
1:A:66[A]:LEU:C	1:A:66[A]:LEU:CD2	2.90	0.40
1:B:31[A]:ASP:HB3	1:B:34[A]:LEU:HB2	2.03	0.40
1:B:179[A]:TRP:HZ2	1:D:84[A]:GLY:HA2	1.86	0.40
1:E:66[B]:LEU:HD13	1:E:140[B]:LEU:CD1	2.52	0.40
1:G:166[B]:ALA:HB2	1:G:179[B]:TRP:CB	2.52	0.40

There are no symmetry-related clashes.

5.3 Torsion angles ⓘ

5.3.1 Protein backbone ⓘ

In the following table, the Percentiles column shows the percent Ramachandran outliers of the chain as a percentile score with respect to all X-ray entries followed by that with respect to entries of similar resolution.

The Analysed column shows the number of residues for which the backbone conformation was analysed, and the total number of residues.

Mol	Chain	Analysed	Favoured	Allowed	Outliers	Percentiles	
1	A	259/291 (89%)	256 (99%)	2 (1%)	1 (0%)	38	20
1	B	258/291 (89%)	248 (96%)	8 (3%)	2 (1%)	22	7
1	D	257/291 (88%)	251 (98%)	6 (2%)	0	100	100
1	E	258/291 (89%)	251 (97%)	6 (2%)	1 (0%)	38	20
1	F	258/291 (89%)	253 (98%)	5 (2%)	0	100	100
1	G	257/291 (88%)	253 (98%)	4 (2%)	0	100	100
All	All	1547/1746 (89%)	1512 (98%)	31 (2%)	4 (0%)	44	25

All (4) Ramachandran outliers are listed below:

Mol	Chain	Res	Type
1	A	108[A]	MET
1	B	108[A]	MET
1	E	111[B]	GLY
1	B	196[A]	VAL

5.3.2 Protein sidechains ⓘ

In the following table, the Percentiles column shows the percent sidechain outliers of the chain as a percentile score with respect to all X-ray entries followed by that with respect to entries of similar resolution.

The Analysed column shows the number of residues for which the sidechain conformation was analysed, and the total number of residues.

Mol	Chain	Analysed	Rotameric	Outliers	Percentiles	
1	A	209/233 (90%)	192 (92%)	17 (8%)	14	3
1	B	208/233 (89%)	197 (95%)	11 (5%)	26	9
1	D	207/233 (89%)	194 (94%)	13 (6%)	21	6
1	E	208/233 (89%)	197 (95%)	11 (5%)	26	9
1	F	208/233 (89%)	201 (97%)	7 (3%)	42	20
1	G	207/233 (89%)	200 (97%)	7 (3%)	42	20
All	All	1247/1398 (89%)	1181 (95%)	66 (5%)	26	9

All (66) residues with a non-rotameric sidechain are listed below:

Mol	Chain	Res	Type
1	A	34[A]	LEU

Continued on next page...

Continued from previous page...

Mol	Chain	Res	Type
1	A	38[A]	LEU
1	A	41[A]	ASN
1	A	59[A]	LEU
1	A	62[A]	PRO
1	A	69[A]	VAL
1	A	108[A]	MET
1	A	109[A]	LEU
1	A	117[A]	VAL
1	A	125[A]	LEU
1	A	135[A]	LEU
1	A	149[A]	LEU
1	A	175[A]	MET
1	A	233[A]	VAL
1	A	239[A]	LEU
1	A	264[A]	LEU
1	A	278[A]	ILE
1	B	21[A]	GLN
1	B	34[A]	LEU
1	B	38[A]	LEU
1	B	107[A]	VAL
1	B	138[A]	LEU
1	B	149[A]	LEU
1	B	168[A]	LEU
1	B	209[A]	ASP
1	B	216[A]	LEU
1	B	239[A]	LEU
1	B	264[A]	LEU
1	D	34[A]	LEU
1	D	38[A]	LEU
1	D	66[A]	LEU
1	D	109[A]	LEU
1	D	125[A]	LEU
1	D	135[A]	LEU
1	D	149[A]	LEU
1	D	172[A]	SER
1	D	216[A]	LEU
1	D	239[A]	LEU
1	D	264[A]	LEU
1	D	265[A]	ASN
1	D	268[A]	THR
1	E	38[B]	LEU
1	E	59[B]	LEU

Continued on next page...

Continued from previous page...

Mol	Chain	Res	Type
1	E	66[B]	LEU
1	E	120[B]	MET
1	E	135[B]	LEU
1	E	136[B]	LEU
1	E	149[B]	LEU
1	E	160[B]	CYS
1	E	168[B]	LEU
1	E	239[B]	LEU
1	E	264[B]	LEU
1	F	66[B]	LEU
1	F	109[B]	LEU
1	F	135[B]	LEU
1	F	149[B]	LEU
1	F	175[B]	MET
1	F	264[B]	LEU
1	F	265[B]	ASN
1	G	38[B]	LEU
1	G	66[B]	LEU
1	G	112[B]	GLU
1	G	135[B]	LEU
1	G	149[B]	LEU
1	G	168[B]	LEU
1	G	264[B]	LEU

Some sidechains can be flipped to improve hydrogen bonding and reduce clashes. All (10) such sidechains are listed below:

Mol	Chain	Res	Type
1	A	265[A]	ASN
1	B	145[A]	ASN
1	B	270[A]	ASN
1	D	41[A]	ASN
1	D	145[A]	ASN
1	E	41[B]	ASN
1	F	30[B]	ASN
1	F	41[B]	ASN
1	F	265[B]	ASN
1	G	265[B]	ASN

5.3.3 RNA ⓘ

There are no RNA molecules in this entry.

5.4 Non-standard residues in protein, DNA, RNA chains [i](#)

There are no non-standard protein/DNA/RNA residues in this entry.

5.5 Carbohydrates [i](#)

There are no carbohydrates in this entry.

5.6 Ligand geometry [i](#)

21 ligands are modelled in this entry.

In the following table, the Counts columns list the number of bonds (or angles) for which Mogul statistics could be retrieved, the number of bonds (or angles) that are observed in the model and the number of bonds (or angles) that are defined in the chemical component dictionary. The Link column lists molecule types, if any, to which the group is linked. The Z score for a bond length (or angle) is the number of standard deviations the observed value is removed from the expected value. A bond length (or angle) with $|Z| > 2$ is considered an outlier worth inspection. RMSZ is the root-mean-square of all Z scores of the bond lengths (or angles).

Mol	Type	Chain	Res	Link	Bond lengths			Bond angles		
					Counts	RMSZ	# $ Z > 2$	Counts	RMSZ	# $ Z > 2$
2	RET	A	301[A]	1	19,20,21	2.39	6 (31%)	27,27,28	1.62	5 (18%)
3	22B	A	302	-	35,36,53	3.32	20 (57%)	40,47,72	1.45	5 (12%)
4	L3P	A	303	-	19,19,58	1.78	7 (36%)	22,22,73	1.11	1 (4%)
4	L3P	A	304	-	19,19,58	1.71	4 (21%)	22,22,73	1.27	3 (13%)
5	BNG	A	305	-	21,21,21	1.44	5 (23%)	26,26,26	0.72	0
5	BNG	A	306	-	21,21,21	1.61	5 (23%)	26,26,26	0.78	1 (3%)
5	BNG	A	307	-	21,21,21	1.56	4 (19%)	26,26,26	0.82	1 (3%)
2	RET	B	301[A]	1	19,20,21	2.14	6 (31%)	27,27,28	1.56	7 (25%)
4	L3P	B	302	-	19,19,58	1.85	8 (42%)	22,22,73	1.43	4 (18%)
5	BNG	B	303	-	21,21,21	1.79	6 (28%)	26,26,26	0.74	0
2	RET	D	301[A]	1	19,20,21	2.20	6 (31%)	27,27,28	1.56	6 (22%)
6	ILE	E	301[B]	-	7,7,8	0.89	1 (14%)	6,8,10	1.42	1 (16%)
2	RET	E	302[B]	1	19,20,21	2.08	6 (31%)	27,27,28	1.55	5 (18%)
2	RET	F	301[B]	1	19,20,21	2.00	4 (21%)	27,27,28	1.76	7 (25%)
4	L3P	F	302	-	19,19,58	1.80	7 (36%)	22,22,73	1.11	2 (9%)
4	L3P	F	303	-	19,19,58	1.94	10 (52%)	22,22,73	1.59	4 (18%)
5	BNG	F	304	-	21,21,21	1.25	3 (14%)	26,26,26	0.73	0
2	RET	G	301[B]	1	19,20,21	1.97	5 (26%)	27,27,28	1.56	4 (14%)

Mol	Type	Chain	Res	Link	Bond lengths			Bond angles		
					Counts	RMSZ	# Z > 2	Counts	RMSZ	# Z > 2
4	L3P	G	302	-	19,19,58	1.86	7 (36%)	22,22,73	1.35	2 (9%)
5	BNG	G	303	-	21,21,21	1.74	7 (33%)	26,26,26	0.75	0
5	BNG	G	304	-	21,21,21	1.67	6 (28%)	26,26,26	0.76	0

In the following table, the Chirals column lists the number of chiral outliers, the number of chiral centers analysed, the number of these observed in the model and the number defined in the chemical component dictionary. Similar counts are reported in the Torsion and Rings columns. '-' means no outliers of that kind were identified.

Mol	Type	Chain	Res	Link	Chirals	Torsions	Rings
2	RET	A	301[A]	1	-	0/13/30/31	0/1/1/1
3	22B	A	302	-	-	2/42/42/65	0/0/0/0
4	L3P	A	303	-	-	0/20/20/67	0/0/0/0
4	L3P	A	304	-	-	0/20/20/67	0/0/0/0
5	BNG	A	305	-	-	0/12/32/32	0/1/1/1
5	BNG	A	306	-	-	0/12/32/32	0/1/1/1
5	BNG	A	307	-	-	0/12/32/32	0/1/1/1
2	RET	B	301[A]	1	-	0/13/30/31	0/1/1/1
4	L3P	B	302	-	-	0/20/20/67	0/0/0/0
5	BNG	B	303	-	-	0/12/32/32	0/1/1/1
2	RET	D	301[A]	1	-	0/13/30/31	0/1/1/1
6	ILE	E	301[B]	-	-	0/7/8/10	0/0/0/0
2	RET	E	302[B]	1	-	0/13/30/31	0/1/1/1
2	RET	F	301[B]	1	-	0/13/30/31	0/1/1/1
4	L3P	F	302	-	-	0/20/20/67	0/0/0/0
4	L3P	F	303	-	-	0/20/20/67	0/0/0/0
5	BNG	F	304	-	-	0/12/32/32	0/1/1/1
2	RET	G	301[B]	1	-	0/13/30/31	0/1/1/1
4	L3P	G	302	-	-	0/20/20/67	0/0/0/0
5	BNG	G	303	-	-	0/12/32/32	0/1/1/1
5	BNG	G	304	-	-	0/12/32/32	0/1/1/1

All (133) bond length outliers are listed below:

Mol	Chain	Res	Type	Atoms	Z	Observed(Å)	Ideal(Å)
2	B	301[A]	RET	C2-C3	-3.44	1.43	1.52
2	D	301[A]	RET	C2-C3	-3.37	1.43	1.52
2	A	301[A]	RET	C2-C3	-2.84	1.45	1.52
2	G	301[B]	RET	C2-C3	-2.73	1.45	1.52
2	F	301[B]	RET	C2-C3	-2.34	1.46	1.52
2	E	302[B]	RET	C2-C3	-2.18	1.46	1.52

Continued on next page...

Continued from previous page...

Mol	Chain	Res	Type	Atoms	Z	Observed(Å)	Ideal(Å)
4	F	302	L3P	C19-C18	2.00	1.59	1.52
4	A	303	L3P	C19-C18	2.01	1.59	1.52
4	B	302	L3P	C16-C15	2.02	1.61	1.52
4	G	302	L3P	C16-C15	2.02	1.61	1.52
6	E	301[B]	ILE	CA-C	2.03	1.52	1.50
3	A	302	22B	C41-C40	2.03	1.49	1.43
3	A	302	22B	C12-C13	2.04	1.50	1.45
5	G	304	BNG	C3-C2	2.04	1.57	1.52
5	G	303	BNG	C4-C3	2.05	1.57	1.52
4	F	303	L3P	C16-C17	2.06	1.61	1.52
5	G	303	BNG	C3-C2	2.08	1.57	1.52
5	F	304	BNG	O1-C1	2.08	1.43	1.40
4	F	303	L3P	C16-C15	2.09	1.61	1.52
5	G	304	BNG	O5-C5	2.10	1.49	1.44
5	A	305	BNG	C1-C2	2.10	1.58	1.52
4	G	302	L3P	C17-C18	2.12	1.64	1.52
4	F	303	L3P	C21-C22	2.12	1.61	1.52
4	F	303	L3P	C19-C18	2.13	1.59	1.52
5	G	303	BNG	C1-C2	2.13	1.58	1.52
5	F	304	BNG	O5-C1	2.15	1.47	1.41
5	A	306	BNG	O5-C5	2.15	1.49	1.44
5	A	306	BNG	C1-C2	2.18	1.58	1.52
5	G	304	BNG	C1-C2	2.19	1.58	1.52
5	B	303	BNG	C1-C2	2.19	1.58	1.52
4	A	303	L3P	C17-C18	2.20	1.64	1.52
5	B	303	BNG	C3-C2	2.20	1.58	1.52
2	G	301[B]	RET	C2-C1	2.22	1.59	1.54
2	E	302[B]	RET	C4-C5	2.23	1.55	1.51
2	B	301[A]	RET	C18-C5	2.25	1.54	1.51
4	F	303	L3P	C26-C25	2.26	1.62	1.52
4	F	303	L3P	C26-C27	2.27	1.62	1.52
4	F	303	L3P	C14-C13	2.28	1.60	1.52
4	A	304	L3P	C19-C18	2.29	1.60	1.52
5	A	306	BNG	C4-C5	2.31	1.57	1.53
5	A	305	BNG	C4-C5	2.32	1.58	1.53
4	F	302	L3P	C14-C13	2.33	1.60	1.52
4	B	302	L3P	C14-C13	2.35	1.60	1.52
4	F	302	L3P	C26-C27	2.36	1.62	1.52
5	A	305	BNG	O1-C1	2.37	1.44	1.40
4	A	304	L3P	C14-C13	2.38	1.60	1.52
4	A	303	L3P	C26-C25	2.38	1.62	1.52
4	F	302	L3P	C26-C25	2.38	1.62	1.52

Continued on next page...

Continued from previous page...

Mol	Chain	Res	Type	Atoms	Z	Observed(Å)	Ideal(Å)
4	B	302	L3P	C26-C25	2.40	1.62	1.52
4	F	302	L3P	C17-C18	2.41	1.66	1.52
5	A	305	BNG	C3-C2	2.42	1.58	1.52
4	G	302	L3P	C14-C13	2.43	1.60	1.52
5	G	303	BNG	O5-C5	2.43	1.50	1.44
4	B	302	L3P	C25-C23	2.46	1.66	1.52
2	A	301[A]	RET	C5-C6	2.46	1.38	1.34
4	A	304	L3P	C17-C18	2.48	1.66	1.52
5	A	307	BNG	C1-C2	2.48	1.59	1.52
4	G	302	L3P	C26-C25	2.48	1.63	1.52
4	B	302	L3P	C17-C18	2.48	1.66	1.52
2	E	302[B]	RET	C2-C1	2.50	1.59	1.54
4	A	303	L3P	C14-C13	2.51	1.61	1.52
4	G	302	L3P	C25-C23	2.51	1.66	1.52
4	F	303	L3P	C25-C23	2.52	1.66	1.52
4	A	303	L3P	C25-C23	2.53	1.66	1.52
4	B	302	L3P	C19-C18	2.53	1.61	1.52
4	B	302	L3P	C26-C27	2.60	1.63	1.52
4	A	303	L3P	C15-C13	2.60	1.67	1.52
4	A	303	L3P	C26-C27	2.62	1.63	1.52
2	B	301[A]	RET	C12-C13	2.64	1.51	1.45
2	G	301[B]	RET	C7-C6	2.64	1.55	1.45
5	B	303	BNG	O5-C5	2.65	1.50	1.44
2	D	301[A]	RET	C5-C6	2.66	1.39	1.34
5	A	307	BNG	C4-C5	2.70	1.58	1.53
3	A	302	22B	C40-C39	2.70	1.41	1.34
4	G	302	L3P	C15-C13	2.71	1.67	1.52
2	D	301[A]	RET	C18-C5	2.72	1.55	1.51
3	A	302	22B	C38-C39	2.73	1.58	1.50
2	F	301[B]	RET	C7-C6	2.73	1.55	1.45
4	B	302	L3P	C15-C13	2.75	1.67	1.52
2	D	301[A]	RET	C12-C13	2.75	1.51	1.45
3	A	302	22B	O27-C23	2.76	1.51	1.44
4	F	302	L3P	C15-C13	2.80	1.68	1.52
4	F	302	L3P	C25-C23	2.80	1.68	1.52
4	A	304	L3P	C15-C13	2.82	1.68	1.52
3	A	302	22B	C11-C10	2.83	1.52	1.43
4	F	303	L3P	C17-C18	2.84	1.68	1.52
4	G	302	L3P	C26-C27	2.84	1.64	1.52
5	B	303	BNG	C4-C5	2.85	1.59	1.53
2	B	301[A]	RET	C7-C6	2.89	1.55	1.45
3	A	302	22B	C45-C44	2.92	1.52	1.43

Continued on next page...

Continued from previous page...

Mol	Chain	Res	Type	Atoms	Z	Observed(Å)	Ideal(Å)
2	B	301[A]	RET	C5-C6	2.95	1.39	1.34
3	A	302	22B	C18-C5	2.98	1.57	1.50
4	F	303	L3P	C15-C13	2.99	1.69	1.52
2	E	302[B]	RET	C7-C6	3.03	1.56	1.45
2	A	301[A]	RET	C12-C13	3.04	1.52	1.45
5	G	304	BNG	C4-C5	3.06	1.59	1.53
2	A	301[A]	RET	C18-C5	3.11	1.56	1.51
3	A	302	22B	C20-C13	3.15	1.57	1.50
2	D	301[A]	RET	C7-C6	3.16	1.56	1.45
5	G	303	BNG	C4-C5	3.23	1.59	1.53
5	G	304	BNG	O1-C1	3.26	1.45	1.40
2	A	301[A]	RET	C7-C6	3.27	1.57	1.45
5	A	307	BNG	O1-C1	3.38	1.46	1.40
5	A	307	BNG	O5-C1	3.61	1.50	1.41
5	A	305	BNG	O5-C1	3.63	1.50	1.41
3	A	302	22B	C17-C1	3.67	1.59	1.52
3	A	302	22B	C50-C43	3.67	1.58	1.50
5	F	304	BNG	C4-C5	3.68	1.60	1.53
5	A	306	BNG	O1-C1	3.77	1.46	1.40
5	G	303	BNG	O1-C1	3.84	1.46	1.40
5	A	306	BNG	O5-C1	4.15	1.52	1.41
5	G	303	BNG	O5-C1	4.19	1.52	1.41
5	G	304	BNG	O5-C1	4.21	1.52	1.41
3	A	302	22B	C42-C43	4.23	1.55	1.45
2	E	302[B]	RET	C5-C6	4.26	1.41	1.34
5	B	303	BNG	O1-C1	4.27	1.47	1.40
5	B	303	BNG	O5-C1	4.32	1.52	1.41
3	A	302	22B	C19-C9	4.35	1.60	1.50
2	G	301[B]	RET	C5-C6	4.44	1.42	1.34
2	F	301[B]	RET	C5-C6	4.45	1.42	1.34
3	A	302	22B	C22-C21	4.50	1.63	1.53
3	A	302	22B	C4-C5	4.61	1.55	1.45
3	A	302	22B	C16-C1	4.67	1.60	1.52
2	G	301[B]	RET	C1-C6	5.00	1.60	1.53
3	A	302	22B	C44-C43	5.18	1.42	1.35
3	A	302	22B	C2-C3	5.25	1.55	1.49
2	F	301[B]	RET	C1-C6	5.68	1.61	1.53
2	E	302[B]	RET	C1-C6	5.70	1.61	1.53
2	D	301[A]	RET	C1-C6	5.81	1.61	1.53
2	B	301[A]	RET	C1-C6	6.01	1.62	1.53
3	A	302	22B	C10-C9	6.71	1.44	1.35
2	A	301[A]	RET	C1-C6	7.27	1.63	1.53

Continued on next page...

Continued from previous page...

Mol	Chain	Res	Type	Atoms	Z	Observed(Å)	Ideal(Å)
3	A	302	22B	C4-C3	8.78	1.54	1.32

All (58) bond angle outliers are listed below:

Mol	Chain	Res	Type	Atoms	Z	Observed(°)	Ideal(°)
3	A	302	22B	C50-C43-C44	-4.64	116.43	122.92
2	A	301[A]	RET	C11-C10-C9	-3.61	122.16	127.31
2	D	301[A]	RET	C11-C10-C9	-3.53	122.27	127.31
2	F	301[B]	RET	C1-C6-C5	-3.23	118.05	122.59
2	G	301[B]	RET	C1-C6-C5	-3.20	118.09	122.59
2	E	302[B]	RET	C1-C6-C5	-3.06	118.29	122.59
3	A	302	22B	C20-C13-C14	-2.95	118.79	122.92
2	A	301[A]	RET	C18-C5-C6	-2.86	121.30	124.51
2	B	301[A]	RET	C18-C5-C6	-2.82	121.35	124.51
6	E	301[B]	ILE	CB-CA-C	-2.72	108.63	112.84
3	A	302	22B	C7-C6-C5	-2.61	123.58	127.31
2	B	301[A]	RET	C11-C10-C9	-2.54	123.68	127.31
2	D	301[A]	RET	C18-C5-C6	-2.47	121.75	124.51
2	B	301[A]	RET	C7-C8-C9	-2.38	122.64	126.21
2	F	301[B]	RET	C8-C9-C10	-2.34	115.34	118.94
2	B	301[A]	RET	C1-C6-C5	-2.24	119.44	122.59
2	D	301[A]	RET	C1-C6-C5	-2.23	119.46	122.59
5	A	306	BNG	C1'-O1-C1	2.06	117.40	113.87
2	F	301[B]	RET	C20-C13-C12	2.08	121.41	118.10
4	B	302	L3P	C17-C16-C15	2.10	123.42	113.25
2	F	301[B]	RET	C2-C1-C6	2.18	113.89	110.48
2	A	301[A]	RET	C18-C5-C4	2.18	117.59	113.45
2	B	301[A]	RET	C18-C5-C4	2.19	117.61	113.45
4	B	302	L3P	C21-C20-C18	2.20	122.97	115.73
2	D	301[A]	RET	C19-C9-C8	2.23	121.66	118.10
2	D	301[A]	RET	C1-C6-C7	2.24	122.01	115.73
3	A	302	22B	C20-C13-C12	2.26	121.69	118.10
4	F	302	L3P	C26-C25-C23	2.26	123.16	115.73
5	A	307	BNG	C1'-O1-C1	2.34	117.89	113.87
4	A	304	L3P	C26-C25-C23	2.41	123.63	115.73
2	D	301[A]	RET	C20-C13-C12	2.42	121.96	118.10
4	F	302	L3P	C16-C17-C18	2.48	123.86	115.73
2	E	302[B]	RET	C19-C9-C8	2.48	122.05	118.10
2	A	301[A]	RET	C1-C6-C7	2.53	122.85	115.73
2	G	301[B]	RET	C17-C1-C6	2.57	114.47	110.31
4	F	303	L3P	C17-C16-C15	2.58	125.74	113.25
2	B	301[A]	RET	C1-C6-C7	2.59	123.02	115.73

Continued on next page...

Continued from previous page...

Mol	Chain	Res	Type	Atoms	Z	Observed(°)	Ideal(°)
2	G	301[B]	RET	C20-C13-C12	2.63	122.30	118.10
2	A	301[A]	RET	C20-C13-C12	2.66	122.33	118.10
2	F	301[B]	RET	C19-C9-C8	2.67	122.36	118.10
2	B	301[A]	RET	C20-C13-C12	2.73	122.44	118.10
2	E	302[B]	RET	C20-C13-C12	2.76	122.50	118.10
4	F	303	L3P	C26-C25-C23	2.77	124.81	115.73
4	A	304	L3P	C16-C17-C18	2.78	124.86	115.73
4	G	302	L3P	C21-C20-C18	2.79	124.91	115.73
2	E	302[B]	RET	C1-C6-C7	2.82	123.65	115.73
4	A	304	L3P	C21-C20-C18	2.99	125.54	115.73
2	G	301[B]	RET	C1-C6-C7	3.07	124.34	115.73
2	E	302[B]	RET	C17-C1-C6	3.09	115.32	110.31
4	F	303	L3P	C21-C20-C18	3.11	125.94	115.73
3	A	302	22B	C42-C43-C44	3.29	123.99	118.94
2	F	301[B]	RET	C1-C6-C7	3.29	124.99	115.73
4	B	302	L3P	C16-C17-C18	3.30	126.58	115.73
2	F	301[B]	RET	C17-C1-C6	3.31	115.67	110.31
4	A	303	L3P	C26-C25-C23	3.49	127.18	115.73
4	B	302	L3P	C26-C25-C23	3.66	127.74	115.73
4	G	302	L3P	C26-C25-C23	4.08	129.13	115.73
4	F	303	L3P	C16-C17-C18	4.42	130.25	115.73

There are no chirality outliers.

All (2) torsion outliers are listed below:

Mol	Chain	Res	Type	Atoms
3	A	302	22B	C15-C14-C13-C20
3	A	302	22B	C15-C14-C13-C12

There are no ring outliers.

16 monomers are involved in 102 short contacts:

Mol	Chain	Res	Type	Clashes	Symm-Clashes
2	A	301[A]	RET	5	0
3	A	302	22B	46	0
4	A	303	L3P	5	0
4	A	304	L3P	6	0
5	A	305	BNG	2	0
5	A	307	BNG	1	0
2	B	301[A]	RET	5	0
4	B	302	L3P	1	0

Continued on next page...

Continued from previous page...

Mol	Chain	Res	Type	Clashes	Symm-Clashes
5	B	303	BNG	3	0
2	D	301[A]	RET	2	0
4	F	302	L3P	8	0
4	F	303	L3P	6	0
5	F	304	BNG	2	0
2	G	301[B]	RET	2	0
4	G	302	L3P	6	0
5	G	304	BNG	2	0

5.7 Other polymers [i](#)

There are no such residues in this entry.

5.8 Polymer linkage issues [i](#)

There are no chain breaks in this entry.

6 Fit of model and data ⓘ

6.1 Protein, DNA and RNA chains ⓘ

In the following table, the column labelled ‘#RSRZ > 2’ contains the number (and percentage) of RSRZ outliers, followed by percent RSRZ outliers for the chain as percentile scores relative to all X-ray entries and entries of similar resolution. The OWAB column contains the minimum, median, 95th percentile and maximum values of the occupancy-weighted average B-factor per residue. The column labelled ‘Q < 0.9’ lists the number of (and percentage) of residues with an average occupancy less than 0.9.

Mol	Chain	Analysed	<RSRZ>	#RSRZ>2	OWAB(Å ²)	Q<0.9
1	A	261/291 (89%)	0.05	11 (4%) 37 42	9, 13, 30, 47	261 (100%)
1	B	260/291 (89%)	0.34	13 (5%) 30 34	9, 21, 32, 50	260 (100%)
1	D	259/291 (89%)	0.27	18 (6%) 18 21	10, 17, 33, 45	259 (100%)
1	E	260/291 (89%)	-0.02	10 (3%) 41 47	10, 15, 31, 47	260 (100%)
1	F	260/291 (89%)	0.28	15 (5%) 24 27	13, 22, 36, 52	260 (100%)
1	G	259/291 (89%)	0.19	15 (5%) 24 27	11, 19, 34, 47	259 (100%)
All	All	1559/1746 (89%)	0.18	82 (5%) 27 31	9, 18, 33, 52	1559 (100%)

All (82) RSRZ outliers are listed below:

Mol	Chain	Res	Type	RSRZ
1	B	277[A]	SER	11.1
1	F	277[B]	SER	10.0
1	D	276[A]	GLY	9.4
1	D	111[A]	GLY	9.1
1	G	276[B]	GLY	7.3
1	F	110[B]	GLY	6.4
1	G	111[B]	GLY	6.2
1	E	110[B]	GLY	5.3
1	E	111[B]	GLY	5.0
1	A	111[A]	GLY	4.9
1	B	243[A]	TYR	4.9
1	E	107[B]	VAL	4.8
1	G	57[B]	ARG	4.7
1	A	277[A]	SER	4.7
1	B	104[A]	GLY	4.6
1	G	30[B]	ASN	4.6
1	F	107[B]	VAL	4.5
1	A	278[A]	ILE	4.3
1	D	112[A]	GLU	4.3

Continued on next page...

Continued from previous page...

Mol	Chain	Res	Type	RSRZ
1	B	276[A]	GLY	4.3
1	A	107[A]	VAL	4.3
1	F	276[B]	GLY	4.2
1	E	277[B]	SER	4.1
1	F	243[B]	TYR	4.1
1	D	58[A]	GLY	4.0
1	A	112[A]	GLU	4.0
1	G	243[B]	TYR	3.8
1	D	54[A]	PHE	3.7
1	E	112[B]	GLU	3.6
1	G	54[B]	PHE	3.6
1	E	160[B]	CYS	3.6
1	D	243[A]	TYR	3.6
1	G	110[B]	GLY	3.6
1	G	112[B]	GLU	3.6
1	D	30[A]	ASN	3.4
1	A	276[A]	GLY	3.4
1	B	200[A]	GLN	3.3
1	D	57[A]	ARG	3.3
1	A	160[A]	CYS	3.1
1	F	109[B]	LEU	3.0
1	F	104[B]	GLY	3.0
1	F	200[B]	GLN	3.0
1	D	110[A]	GLY	2.8
1	B	268[A]	THR	2.8
1	B	204[A]	ALA	2.8
1	F	236[B]	VAL	2.8
1	B	107[A]	VAL	2.7
1	A	104[A]	GLY	2.7
1	A	110[A]	GLY	2.7
1	B	101[A]	PHE	2.6
1	G	275[B]	SER	2.6
1	E	108[B]	MET	2.6
1	G	268[B]	THR	2.6
1	G	113[B]	GLU	2.6
1	G	258[B]	ILE	2.6
1	D	275[A]	SER	2.5
1	D	268[A]	THR	2.5
1	D	32[A]	PRO	2.4
1	D	261[A]	PHE	2.4
1	B	236[A]	VAL	2.3
1	G	129[B]	LEU	2.3

Continued on next page...

Continued from previous page...

Mol	Chain	Res	Type	RSRZ
1	B	108[A]	MET	2.3
1	D	113[A]	GLU	2.3
1	E	276[B]	GLY	2.3
1	B	174[A]	LEU	2.2
1	F	204[B]	ALA	2.2
1	E	113[B]	GLU	2.2
1	D	34[A]	LEU	2.2
1	G	32[B]	PRO	2.2
1	F	174[B]	LEU	2.2
1	G	108[B]	MET	2.2
1	B	231[A]	LEU	2.2
1	E	106[B]	SER	2.1
1	D	238[A]	VAL	2.1
1	D	50[A]	LEU	2.1
1	D	258[A]	ILE	2.1
1	F	101[B]	PHE	2.1
1	F	258[B]	ILE	2.1
1	A	108[A]	MET	2.0
1	F	268[B]	THR	2.0
1	F	212[B]	SER	2.0
1	A	113[A]	GLU	2.0

6.2 Non-standard residues in protein, DNA, RNA chains [i](#)

There are no non-standard protein/DNA/RNA residues in this entry.

6.3 Carbohydrates [i](#)

There are no carbohydrates in this entry.

6.4 Ligands [i](#)

In the following table, the Atoms column lists the number of modelled atoms in the group and the number defined in the chemical component dictionary. LLDF column lists the quality of electron density of the group with respect to its neighbouring residues in protein, DNA or RNA chains. The B-factors column lists the minimum, median, 95th percentile and maximum values of B factors of atoms in the group. The column labelled 'Q< 0.9' lists the number of atoms with occupancy less than 0.9.

Mol	Type	Chain	Res	Atoms	RSCC	RSR	LLDF	B-factors(Å ²)	Q<0.9
4	L3P	A	304	20/59	0.72	0.65	26.00	63,66,70,71	0

Continued on next page...

Continued from previous page...

Mol	Type	Chain	Res	Atoms	RSCC	RSR	LLDF	B-factors(\AA^2)	Q<0.9
4	L3P	F	303	20/59	0.65	0.68	22.40	75,79,84,85	0
4	L3P	A	303	20/59	0.58	0.77	22.38	85,88,90,90	0
4	L3P	G	302	20/59	0.57	0.72	19.21	87,89,90,91	0
4	L3P	F	302	20/59	0.57	0.58	18.27	66,68,70,70	0
4	L3P	B	302	20/59	0.71	0.65	17.94	77,79,80,81	0
3	22B	A	302	37/54	0.72	0.35	11.64	41,53,64,65	0
5	BNG	G	303	21/21	0.63	0.29	7.02	86,88,90,90	0
5	BNG	G	304	21/21	0.84	0.15	5.32	27,45,52,53	0
5	BNG	B	303	21/21	0.69	0.20	4.99	57,62,65,65	0
5	BNG	A	307	21/21	0.76	0.19	3.11	54,60,74,75	0
5	BNG	A	306	21/21	0.71	0.21	2.29	70,73,74,75	0
2	RET	D	301[A]	20/21	0.95	0.11	1.65	8,10,14,14	20
2	RET	B	301[A]	20/21	0.96	0.10	1.30	15,18,21,22	20
2	RET	G	301[B]	20/21	0.95	0.11	1.27	13,16,22,22	20
2	RET	F	301[B]	20/21	0.94	0.10	1.13	21,21,26,29	19
5	BNG	A	305	21/21	0.85	0.15	1.04	34,44,68,69	0
2	RET	A	301[A]	20/21	0.96	0.12	0.97	8,11,16,19	20
2	RET	E	302[B]	20/21	0.95	0.11	0.97	10,12,18,19	20
5	BNG	F	304	21/21	0.93	0.11	0.62	24,27,39,42	0
6	ILE	E	301[B]	8/9	0.74	0.17	0.37	37,38,40,41	8

6.5 Other polymers [i](#)

There are no such residues in this entry.