



Full wwPDB X-ray Structure Validation Report ⓘ

Apr 3, 2017 – 11:38 AM EDT

PDB ID : 5B4P
Title : Complex structure of human C5a and its binding repebody
Authors : Kim, H.-S.; Choi, J.M.; Hwang, D.E.
Deposited on : 2016-04-12
Resolution : 2.40 Å(reported)

This is a Full wwPDB X-ray Structure Validation Report for a publicly released PDB entry.

We welcome your comments at validation@mail.wwpdb.org

A user guide is available at

<http://wwpdb.org/validation/2016/XrayValidationReportHelp>

with specific help available everywhere you see the ⓘ symbol.

The following versions of software and data (see [references ⓘ](#)) were used in the production of this report:

MolProbity : 4.02b-467
Mogul : 1.7.2 (RC1), CSD as538be (2017)
Xtriage (Phenix) : 1.9-1692
EDS : rb-20029077
Percentile statistics : 20161228.v01 (using entries in the PDB archive December 28th 2016)
Refmac : 5.8.0135
CCP4 : 6.5.0
Ideal geometry (proteins) : Engh & Huber (2001)
Ideal geometry (DNA, RNA) : Parkinson et al. (1996)
Validation Pipeline (wwPDB-VP) : rb-20029077

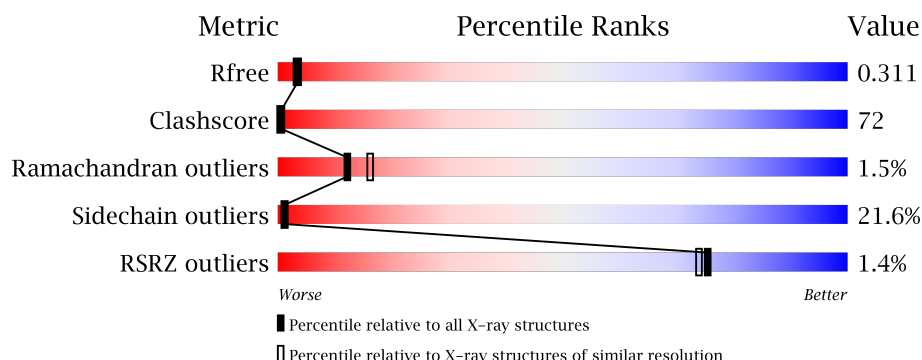
1 Overall quality at a glance

The following experimental techniques were used to determine the structure:

X-RAY DIFFRACTION

The reported resolution of this entry is 2.40 Å.

Percentile scores (ranging between 0-100) for global validation metrics of the entry are shown in the following graphic. The table shows the number of entries on which the scores are based.



Metric	Whole archive (#Entries)	Similar resolution (#Entries, resolution range(Å))
R_{free}	100719	3166 (2.40-2.40)
Clashscore	112137	3674 (2.40-2.40)
Ramachandran outliers	110173	3616 (2.40-2.40)
Sidechain outliers	110143	3617 (2.40-2.40)
RSRZ outliers	101464	3195 (2.40-2.40)

The table below summarises the geometric issues observed across the polymeric chains and their fit to the electron density. The red, orange, yellow and green segments on the lower bar indicate the fraction of residues that contain outliers for ≥ 3 , 2, 1 and 0 types of geometric quality criteria. A grey segment represents the fraction of residues that are not modelled. The numeric value for each fraction is indicated below the corresponding segment, with a dot representing fractions $\leq 5\%$. The upper red bar (where present) indicates the fraction of residues that have poor fit to the electron density. The numeric value is given above the bar.

Mol	Chain	Length	Quality of chain
1	A	261	<div> <div>2%</div> <div> <div></div> <div>30%</div> <div>51%</div> <div>16%</div> <div>• •</div> </div> </div>
1	C	261	<div> <div>30%</div> <div>54%</div> <div>15%</div> <div>•</div> </div>
2	B	75	<div> <div>3%</div> <div> <div></div> <div>44%</div> <div>39%</div> <div>13%</div> <div>•</div> </div> </div>
2	D	75	<div> <div>•%</div> <div> <div></div> <div>41%</div> <div>44%</div> <div>11%</div> <div>•</div> </div> </div>

The following table lists non-polymeric compounds, carbohydrate monomers and non-standard residues in protein, DNA, RNA chains that are outliers for geometric or electron-density-fit crite-

ria:

Mol	Type	Chain	Res	Chirality	Geometry	Clashes	Electron density
4	SO4	A	302	-	-	-	X
4	SO4	C	301	-	-	-	X

2 Entry composition

There are 5 unique types of molecules in this entry. The entry contains 5157 atoms, of which 0 are hydrogens and 0 are deuteriums.

In the tables below, the ZeroOcc column contains the number of atoms modelled with zero occupancy, the AltConf column contains the number of residues with at least one atom in alternate conformation and the Trace column contains the number of residues modelled with at most 2 atoms.

- Molecule 1 is a protein called repebody.

Mol	Chain	Residues	Atoms					ZeroOcc	AltConf	Trace
1	A	254	Total	C	N	O	S	0	0	0
			1928	1227	313	384	4			
1	C	260	Total	C	N	O	S	0	0	0
			2005	1281	325	394	5			

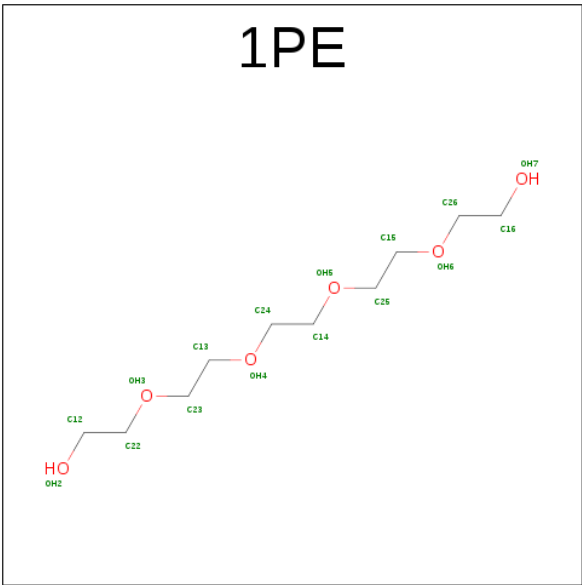
- Molecule 2 is a protein called C5a anaphylatoxin.

Mol	Chain	Residues	Atoms					ZeroOcc	AltConf	Trace
2	B	72	Total	C	N	O	S	0	0	0
			540	330	101	101	8			
2	D	72	Total	C	N	O	S	0	0	0
			543	331	100	104	8			

There are 2 discrepancies between the modelled and reference sequences:

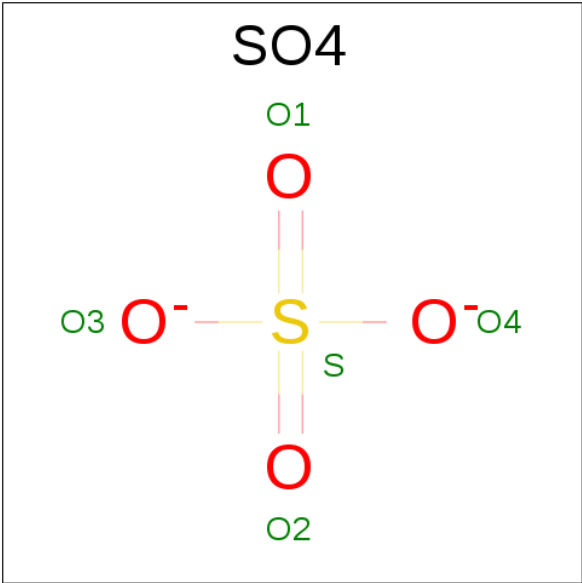
Chain	Residue	Modelled	Actual	Comment	Reference
B	0	SER	-	expression tag	UNP P01031
D	0	SER	-	expression tag	UNP P01031

- Molecule 3 is PENTAETHYLENE GLYCOL (three-letter code: 1PE) (formula: C₁₀H₂₂O₆).



Mol	Chain	Residues	Atoms			ZeroOcc	AltConf
3	A	1	Total	C	O	0	0
			16	10	6		
3	B	1	Total	C	O	0	0
			16	10	6		

- Molecule 4 is SULFATE ION (three-letter code: SO4) (formula: O₄S).



Mol	Chain	Residues	Atoms			ZeroOcc	AltConf
4	A	1	Total	O	S	0	0
			5	4	1		
4	A	1	Total	O	S	0	0
			5	4	1		

Continued on next page...

Continued from previous page...

Mol	Chain	Residues	Atoms			ZeroOcc	AltConf
4	A	1	Total	O	S	0	0
			5	4	1		
4	B	1	Total	O	S	0	0
			5	4	1		
4	C	1	Total	O	S	0	0
			5	4	1		
4	C	1	Total	O	S	0	0
			5	4	1		
4	C	1	Total	O	S	0	0
			5	4	1		
4	D	1	Total	O	S	0	0
			5	4	1		

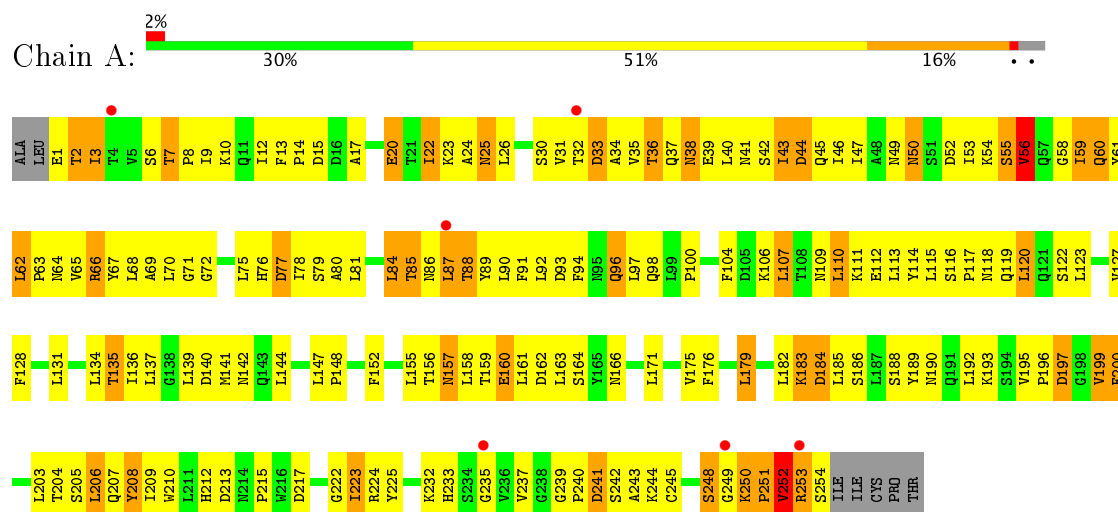
- Molecule 5 is water.

Mol	Chain	Residues	Atoms		ZeroOcc	AltConf
5	A	28	Total	O	0	0
			28	28		
5	B	9	Total	O	0	0
			9	9		
5	C	25	Total	O	0	0
			25	25		
5	D	7	Total	O	0	0
			7	7		

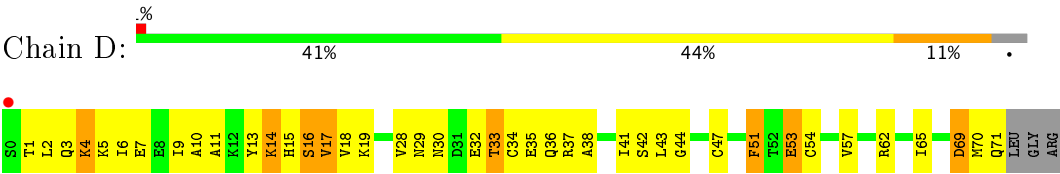
3 Residue-property plots

These plots are drawn for all protein, RNA and DNA chains in the entry. The first graphic for a chain summarises the proportions of the various outlier classes displayed in the second graphic. The second graphic shows the sequence view annotated by issues in geometry and electron density. Residues are color-coded according to the number of geometric quality criteria for which they contain at least one outlier: green = 0, yellow = 1, orange = 2 and red = 3 or more. A red dot above a residue indicates a poor fit to the electron density ($RSRZ > 2$). Stretches of 2 or more consecutive residues without any outlier are shown as a green connector. Residues present in the sample, but not in the model, are shown in grey.

• Molecule 1: repebody



● Molecule 2: C5a anaphylatoxin



4 Data and refinement statistics

Property	Value	Source
Space group	P 2 2 21	Depositor
Cell constants a, b, c, α , β , γ	55.84Å 87.55Å 188.39Å 90.00° 90.00° 90.00°	Depositor
Resolution (Å)	20.00 – 2.40 19.96 – 2.40	Depositor EDS
% Data completeness (in resolution range)	92.0 (20.00-2.40) 92.2 (19.96-2.40)	Depositor EDS
R_{merge}	(Not available)	Depositor
R_{sym}	(Not available)	Depositor
$\langle I/\sigma(I) \rangle$ ¹	1.88 (at 2.41Å)	Xtriage
Refinement program	REFMAC 5.6.0117	Depositor
R, R_{free}	0.272 , 0.310 0.268 , 0.311	Depositor DCC
R_{free} test set	1723 reflections (5.32%)	DCC
Wilson B-factor (Å ²)	41.5	Xtriage
Anisotropy	0.029	Xtriage
Bulk solvent k_{sol} (e/Å ³), B_{sol} (Å ²)	0.20 , 38.5	EDS
L-test for twinning ²	$\langle L \rangle = 0.47$, $\langle L^2 \rangle = 0.30$	Xtriage
Estimated twinning fraction	No twinning to report.	Xtriage
F_o, F_c correlation	0.93	EDS
Total number of atoms	5157	wwPDB-VP
Average B, all atoms (Å ²)	60.0	wwPDB-VP

Xtriage's analysis on translational NCS is as follows: *The analyses of the Patterson function reveals a significant off-origin peak that is 47.79 % of the origin peak, indicating pseudo translational symmetry. The chance of finding a peak of this or larger height randomly in a structure without pseudo translational symmetry is equal to 9.4408e-05. The detected translational NCS is most likely also responsible for the elevated intensity ratio.*

¹ Intensities estimated from amplitudes.

² Theoretical values of $\langle |L| \rangle$, $\langle L^2 \rangle$ for acentric reflections are 0.5, 0.333 respectively for untwinned datasets, and 0.375, 0.2 for perfectly twinned datasets.

5 Model quality [i](#)

5.1 Standard geometry [i](#)

Bond lengths and bond angles in the following residue types are not validated in this section: SO4, 1PE

The Z score for a bond length (or angle) is the number of standard deviations the observed value is removed from the expected value. A bond length (or angle) with $|Z| > 5$ is considered an outlier worth inspection. RMSZ is the root-mean-square of all Z scores of the bond lengths (or angles).

Mol	Chain	Bond lengths		Bond angles	
		RMSZ	$\# Z > 5$	RMSZ	$\# Z > 5$
1	A	0.64	0/1966	0.76	0/2691
1	C	0.72	3/2043 (0.1%)	0.80	0/2786
2	B	0.67	0/545	0.83	2/732 (0.3%)
2	D	0.68	0/548	0.84	0/736
All	All	0.68	3/5102 (0.1%)	0.79	2/6945 (0.0%)

All (3) bond length outliers are listed below:

Mol	Chain	Res	Type	Atoms	Z	Observed(Å)	Ideal(Å)
1	C	210	TRP	CD2-CE2	5.93	1.48	1.41
1	C	229	TRP	CD2-CE2	5.78	1.48	1.41
1	C	216	TRP	CD2-CE2	5.52	1.48	1.41

All (2) bond angle outliers are listed below:

Mol	Chain	Res	Type	Atoms	Z	Observed(°)	Ideal(°)
2	B	54	CYS	CA-CB-SG	-7.76	100.03	114.00
2	B	47	CYS	CA-CB-SG	-5.61	103.90	114.00

There are no chirality outliers.

There are no planarity outliers.

5.2 Too-close contacts [i](#)

In the following table, the Non-H and H(model) columns list the number of non-hydrogen atoms and hydrogen atoms in the chain respectively. The H(added) column lists the number of hydrogen atoms added and optimized by MolProbity. The Clashes column lists the number of clashes within the asymmetric unit, whereas Symm-Clashes lists symmetry related clashes.

Mol	Chain	Non-H	H(model)	H(added)	Clashes	Symm-Clashes
1	A	1928	0	1857	324	0
1	C	2005	0	1988	290	0
2	B	540	0	532	49	0
2	D	543	0	532	68	0
3	A	16	0	21	2	0
3	B	16	0	21	2	0
4	A	15	0	0	0	0
4	B	5	0	0	0	0
4	C	15	0	0	0	0
4	D	5	0	0	0	0
5	A	28	0	0	3	0
5	B	9	0	0	2	0
5	C	25	0	0	4	0
5	D	7	0	0	2	0
All	All	5157	0	4951	726	0

The all-atom clashscore is defined as the number of clashes found per 1000 atoms (including hydrogen atoms). The all-atom clashscore for this structure is 72.

All (726) close contacts within the same asymmetric unit are listed below, sorted by their clash magnitude.

Atom-1	Atom-2	Interatomic distance (Å)	Clash overlap (Å)
2:D:14:LYS:HG2	2:D:15:HIS:CD2	1.37	1.56
1:A:36:THR:HG23	1:A:39:GLU:CG	1.41	1.48
1:C:17:ALA:CB	1:C:53:ILE:HG22	1.55	1.36
2:D:1:THR:CG2	2:D:4:LYS:HB3	1.59	1.29
1:C:219:THR:C	1:C:221:PRO:HD2	1.54	1.26
1:A:38:ASN:HA	1:A:41:ASN:ND2	1.52	1.22
1:A:7:THR:O	1:A:34:ALA:HA	1.41	1.19
1:C:226:LEU:HD12	1:C:226:LEU:N	1.58	1.17
1:A:85:THR:O	1:A:109:ASN:ND2	1.78	1.16
1:A:36:THR:HG23	1:A:39:GLU:HG3	1.26	1.15
1:C:219:THR:O	1:C:223:ILE:HD11	1.46	1.15
1:A:223:ILE:HD13	1:A:223:ILE:C	1.66	1.14
1:C:256:ILE:HD12	1:C:256:ILE:N	1.61	1.14
1:C:226:LEU:H	1:C:226:LEU:CD1	1.57	1.13
2:D:14:LYS:CG	2:D:15:HIS:CD2	2.31	1.13
2:D:4:LYS:O	2:D:4:LYS:HE3	1.47	1.12
1:C:17:ALA:HB1	1:C:53:ILE:HG22	1.13	1.09
1:A:36:THR:HG23	1:A:39:GLU:CD	1.72	1.08
1:C:173:LYS:HD3	1:C:173:LYS:N	1.67	1.08
1:A:38:ASN:CA	1:A:41:ASN:HD22	1.64	1.08

Continued on next page...

Continued from previous page...

Atom-1	Atom-2	Interatomic distance (Å)	Clash overlap (Å)
1:C:253:ARG:O	1:C:256:ILE:CD1	2.02	1.08
1:C:220:CYS:N	1:C:221:PRO:HD2	1.65	1.07
1:C:256:ILE:HD12	1:C:256:ILE:H	0.96	1.07
1:A:38:ASN:HA	1:A:41:ASN:HD22	0.92	1.07
1:C:206:LEU:CD2	1:C:206:LEU:H	1.62	1.07
1:C:206:LEU:HD23	1:C:206:LEU:H	0.90	1.06
1:A:44:ASP:HB3	1:A:66:ARG:HD3	1.36	1.06
1:A:9:ILE:HD11	1:A:35:VAL:HG11	1.30	1.06
1:A:223:ILE:HD13	1:A:224:ARG:N	1.68	1.05
1:C:173:LYS:H	1:C:173:LYS:CD	1.65	1.05
1:A:176:PHE:O	1:A:179:LEU:HD12	1.55	1.05
1:C:256:ILE:H	1:C:256:ILE:CD1	1.60	1.05
2:D:1:THR:HG22	2:D:4:LYS:HB3	1.30	1.05
1:A:112:GLU:OE1	1:A:114:TYR:OH	1.73	1.05
1:A:196:PRO:O	1:A:199:VAL:HG22	1.57	1.04
2:D:1:THR:HG23	2:D:4:LYS:HB3	1.37	1.04
1:A:252:VAL:HG13	1:A:253:ARG:H	1.19	1.03
1:C:173:LYS:H	1:C:173:LYS:HD3	0.87	1.03
1:C:176:PHE:HA	1:C:179:LEU:HD13	1.37	1.03
1:A:176:PHE:O	1:A:179:LEU:CD1	2.08	1.02
2:B:2:LEU:HD22	2:B:6:ILE:HD11	1.41	1.02
1:A:44:ASP:HA	1:A:64:ASN:O	1.59	1.01
1:C:253:ARG:O	1:C:256:ILE:HD12	1.56	1.01
1:A:36:THR:CG2	1:A:39:GLU:CG	2.38	1.01
1:C:240:PRO:HB2	1:C:252:VAL:HG21	1.38	1.01
1:C:203:LEU:O	1:C:206:LEU:HD21	1.60	1.01
1:A:15:ASP:OD2	1:A:55:SER:N	1.94	1.00
1:C:17:ALA:HB3	1:C:53:ILE:HG22	1.41	1.00
1:C:206:LEU:HD23	1:C:206:LEU:N	1.72	1.00
2:D:53:GLU:O	2:D:57:VAL:HG12	1.59	1.00
1:C:258:PRO:O	1:C:259:THR:HB	1.55	0.99
1:C:225:TYR:HD1	1:C:226:LEU:N	1.60	0.99
1:C:241:ASP:O	1:C:244:LYS:NZ	1.94	0.99
1:A:251:PRO:O	1:A:252:VAL:HG23	1.63	0.99
2:D:3:GLN:HB3	5:D:206:HOH:O	1.63	0.98
1:A:112:GLU:HG2	1:A:136:ILE:HB	1.46	0.97
1:A:68:LEU:HD21	1:A:70:LEU:HD11	1.44	0.97
2:D:1:THR:CG2	2:D:4:LYS:CB	2.43	0.96
1:A:88:THR:HG22	1:A:111:LYS:HD2	1.48	0.96
1:A:7:THR:O	1:A:34:ALA:CA	2.12	0.95
1:A:72:GLY:HA3	1:A:94:PHE:CE1	2.01	0.95

Continued on next page...

Continued from previous page...

Atom-1	Atom-2	Interatomic distance (Å)	Clash overlap (Å)
1:C:72:GLY:HA3	1:C:94:PHE:CE2	1.99	0.95
2:D:1:THR:HG23	2:D:4:LYS:H	1.31	0.95
1:A:36:THR:CG2	1:A:39:GLU:CD	2.34	0.94
1:C:198:GLY:N	1:C:225:TYR:CE2	2.35	0.94
1:A:44:ASP:CB	1:A:66:ARG:HD3	1.97	0.93
1:C:195:VAL:HG13	1:C:226:LEU:HD23	1.50	0.93
1:C:225:TYR:C	1:C:225:TYR:CD1	2.42	0.93
1:A:65:VAL:HG12	1:A:87:LEU:CD1	1.99	0.92
1:C:226:LEU:H	1:C:226:LEU:HD12	0.76	0.92
1:A:199:VAL:HG23	1:A:200:PHE:CD1	2.05	0.91
1:A:110:LEU:HD12	1:A:110:LEU:O	1.70	0.91
2:B:28:VAL:HA	5:B:203:HOH:O	1.71	0.91
1:A:84:LEU:O	1:A:107:LEU:HD12	1.71	0.91
1:C:243:ALA:O	1:C:244:LYS:HD2	1.70	0.90
1:C:240:PRO:CB	1:C:252:VAL:HG21	2.00	0.90
2:D:14:LYS:HG2	2:D:15:HIS:NE2	1.87	0.90
1:C:17:ALA:HB1	1:C:53:ILE:CG2	2.01	0.90
1:A:206:LEU:HD12	1:A:206:LEU:C	1.93	0.89
1:C:220:CYS:N	1:C:221:PRO:CD	2.35	0.89
1:C:17:ALA:CB	1:C:53:ILE:CG2	2.49	0.89
1:C:219:THR:O	1:C:223:ILE:CD1	2.21	0.89
1:A:127:VAL:HG22	1:A:128:PHE:CD1	2.08	0.88
1:A:200:PHE:HA	1:A:203:LEU:CD1	2.04	0.88
2:D:14:LYS:HG2	2:D:15:HIS:HD2	1.25	0.88
1:C:253:ARG:C	1:C:256:ILE:HD11	1.94	0.87
1:A:112:GLU:CG	1:A:136:ILE:HB	2.04	0.87
1:A:9:ILE:CD1	1:A:35:VAL:HG11	2.04	0.87
1:A:38:ASN:CA	1:A:41:ASN:ND2	2.30	0.87
1:A:36:THR:HG23	1:A:39:GLU:HG2	1.54	0.87
1:C:82:LYS:O	1:C:106:LYS:CB	2.22	0.87
1:A:85:THR:HG22	1:A:106:LYS:O	1.73	0.86
1:A:152:PHE:HA	1:A:155:LEU:HD12	1.57	0.86
1:A:252:VAL:HG13	1:A:253:ARG:N	1.84	0.86
1:A:37:GLN:O	1:A:41:ASN:ND2	2.09	0.85
1:C:72:GLY:O	1:C:94:PHE:HA	1.75	0.85
1:A:252:VAL:CG1	1:A:253:ARG:N	2.38	0.85
2:B:14:LYS:H	2:B:14:LYS:HD2	1.38	0.85
2:B:29:ASN:HB3	2:B:37:ARG:HD2	1.57	0.85
1:A:7:THR:H	1:A:34:ALA:HB1	1.41	0.85
1:C:255:ILE:N	1:C:256:ILE:HD12	1.91	0.85
1:C:72:GLY:CA	1:C:94:PHE:CE2	2.59	0.85

Continued on next page...

Continued from previous page...

Atom-1	Atom-2	Interatomic distance (Å)	Clash overlap (Å)
2:D:28:VAL:HA	5:D:202:HOH:O	1.75	0.84
1:A:44:ASP:HB3	1:A:66:ARG:CD	2.07	0.84
1:A:110:LEU:C	1:A:110:LEU:HD12	1.98	0.84
1:A:200:PHE:HA	1:A:203:LEU:HD12	1.60	0.83
1:C:254:SER:C	1:C:256:ILE:CD1	2.47	0.83
1:A:85:THR:CG2	1:A:106:LYS:O	2.26	0.83
1:A:72:GLY:CA	1:A:94:PHE:CE1	2.62	0.83
2:B:35:GLU:HA	2:B:35:GLU:OE1	1.77	0.83
1:A:183:LYS:HA	1:A:206:LEU:HA	1.59	0.83
1:A:251:PRO:O	1:A:252:VAL:CG2	2.27	0.82
1:A:88:THR:HA	1:A:110:LEU:HA	1.61	0.82
1:A:107:LEU:H	1:A:107:LEU:HD22	1.42	0.82
1:C:219:THR:HB	1:C:221:PRO:CD	2.10	0.82
1:A:200:PHE:CA	1:A:203:LEU:HD12	2.10	0.82
2:B:2:LEU:O	2:B:6:ILE:HG12	1.79	0.82
1:A:223:ILE:C	1:A:223:ILE:CD1	2.41	0.81
1:A:111:LYS:HA	1:A:134:LEU:HA	1.62	0.81
1:A:65:VAL:HG12	1:A:87:LEU:HD12	1.61	0.81
1:C:225:TYR:CD1	1:C:226:LEU:N	2.48	0.81
1:A:120:LEU:HD23	1:A:122:SER:HB3	1.62	0.81
1:A:22:ILE:HG23	1:A:26:LEU:HD12	1.62	0.81
1:A:185:LEU:O	1:A:209:ILE:HG13	1.80	0.81
2:B:41:ILE:HG22	2:B:48:ILE:HD11	1.64	0.80
1:C:43:ILE:CD1	1:C:62:LEU:HD13	2.11	0.80
2:D:1:THR:HG22	2:D:4:LYS:CB	2.10	0.80
1:C:152:PHE:HA	1:C:155:LEU:HD12	1.64	0.80
2:D:5:LYS:O	2:D:9:ILE:CD1	2.30	0.79
1:A:196:PRO:HD2	1:A:199:VAL:HG11	1.65	0.79
1:A:20:GLU:OE2	1:A:31:VAL:CG2	2.30	0.79
1:A:96:GLN:OE1	1:A:119:GLN:HA	1.83	0.78
1:A:88:THR:CG2	1:A:111:LYS:HD2	2.12	0.78
1:A:136:ILE:HG12	1:A:160:GLU:OE1	1.83	0.78
1:C:230:ILE:HG22	1:C:240:PRO:HB3	1.65	0.78
1:C:120:LEU:O	1:C:121:GLN:HB2	1.82	0.78
1:A:67:TYR:HD2	1:A:89:TYR:HB3	1.48	0.78
1:A:179:LEU:H	1:A:179:LEU:HD12	1.47	0.78
2:D:14:LYS:H	2:D:14:LYS:CD	1.97	0.78
1:A:253:ARG:O	1:A:254:SER:HB2	1.81	0.78
1:C:82:LYS:O	1:C:106:LYS:HB3	1.84	0.78
1:C:253:ARG:C	1:C:256:ILE:CD1	2.50	0.78
1:A:253:ARG:O	1:A:254:SER:CB	2.32	0.77

Continued on next page...

Continued from previous page...

Atom-1	Atom-2	Interatomic distance (Å)	Clash overlap (Å)
1:A:20:GLU:OE2	1:A:31:VAL:HG21	1.84	0.77
1:A:43:ILE:CD1	1:A:62:LEU:HD13	2.13	0.77
1:C:230:ILE:CG2	1:C:240:PRO:HB3	2.15	0.77
1:C:53:ILE:HG12	1:C:53:ILE:O	1.81	0.77
1:A:90:LEU:HD23	1:A:113:LEU:CD1	2.14	0.77
1:A:113:LEU:HD11	1:A:115:LEU:HD21	1.66	0.77
1:A:12:ILE:HD12	1:A:12:ILE:H	1.49	0.77
1:A:251:PRO:O	1:A:252:VAL:CB	2.31	0.76
1:C:198:GLY:HA2	1:C:225:TYR:HE2	1.50	0.76
1:A:36:THR:HG22	1:A:39:GLU:OE1	1.86	0.76
1:C:219:THR:HB	1:C:221:PRO:CG	2.15	0.76
1:A:190:ASN:HB3	1:A:192:LEU:HD12	1.65	0.76
1:A:50:ASN:OD1	1:A:52:ASP:N	2.19	0.76
1:C:195:VAL:CG1	1:C:226:LEU:HD23	2.15	0.76
1:C:106:LYS:HB2	5:C:401:HOH:O	1.84	0.75
1:C:253:ARG:O	1:C:256:ILE:HD11	1.85	0.75
1:A:183:LYS:O	1:A:206:LEU:HD13	1.86	0.75
1:C:112:GLU:HG2	1:C:136:ILE:HB	1.66	0.75
1:A:87:LEU:O	1:A:110:LEU:HB3	1.87	0.75
2:D:4:LYS:C	2:D:4:LYS:HE3	2.07	0.75
1:C:211:LEU:HB3	1:C:216:TRP:CZ2	2.21	0.74
2:D:29:ASN:HB3	2:D:37:ARG:HD2	1.68	0.74
2:D:4:LYS:O	2:D:4:LYS:CE	2.32	0.74
1:A:120:LEU:CD2	1:A:122:SER:HB3	2.17	0.74
1:C:256:ILE:N	1:C:256:ILE:CD1	2.31	0.74
2:D:5:LYS:O	2:D:9:ILE:HD13	1.88	0.74
1:A:36:THR:CG2	1:A:39:GLU:OE1	2.36	0.74
1:A:7:THR:N	1:A:34:ALA:HB1	2.03	0.74
2:D:42:SER:O	2:D:43:LEU:HD23	1.88	0.73
1:C:94:PHE:O	1:C:116:SER:HB3	1.89	0.73
1:C:216:TRP:HD1	1:C:244:LYS:O	1.72	0.73
1:C:176:PHE:CA	1:C:179:LEU:HD13	2.17	0.73
1:A:156:THR:OG1	1:A:157:ASN:ND2	2.20	0.73
1:A:56:VAL:O	1:A:59:ILE:HB	1.89	0.73
2:B:56:VAL:O	2:B:60:GLN:HG3	1.89	0.73
1:A:2:THR:OG1	1:A:3:ILE:N	2.21	0.73
1:C:105:ASP:HA	1:C:130:LYS:HG2	1.71	0.73
1:C:171:LEU:HB2	1:C:196:PRO:HD3	1.70	0.72
1:C:61:TYR:C	1:C:62:LEU:HD23	2.09	0.72
1:C:72:GLY:CA	1:C:94:PHE:CD2	2.72	0.72
1:A:190:ASN:HB3	1:A:192:LEU:CD1	2.19	0.72

Continued on next page...

Continued from previous page...

Atom-1	Atom-2	Interatomic distance (Å)	Clash overlap (Å)
1:C:239:GLY:O	1:C:242:SER:N	2.23	0.72
1:A:196:PRO:HB2	1:A:199:VAL:HG13	1.71	0.72
2:D:1:THR:HG23	2:D:4:LYS:CB	2.15	0.72
2:B:14:LYS:HD2	2:B:14:LYS:N	2.03	0.72
1:A:36:THR:CG2	1:A:39:GLU:HG3	2.12	0.71
1:A:112:GLU:HG2	1:A:136:ILE:CB	2.20	0.71
1:A:206:LEU:HD12	1:A:207:GLN:N	2.05	0.71
1:C:230:ILE:HG23	1:C:236:VAL:HG21	1.73	0.71
1:C:254:SER:C	1:C:256:ILE:HD12	2.09	0.71
1:A:44:ASP:O	1:A:66:ARG:N	2.24	0.71
1:A:6:SER:O	1:A:7:THR:HG23	1.90	0.71
1:C:78:ILE:O	1:C:81:LEU:HG	1.91	0.70
1:C:17:ALA:HB3	1:C:53:ILE:CG2	2.16	0.70
2:D:33:THR:HG23	2:D:36:GLN:CG	2.22	0.70
1:A:210:TRP:NE1	1:A:237:VAL:HG11	2.05	0.70
1:C:240:PRO:CB	1:C:252:VAL:CG2	2.69	0.70
1:C:254:SER:C	1:C:256:ILE:HD13	2.12	0.70
1:A:13:PHE:HZ	1:A:62:LEU:HD21	1.57	0.70
1:C:171:LEU:HD22	1:C:192:LEU:HD21	1.74	0.70
1:C:72:GLY:C	1:C:94:PHE:CD2	2.65	0.70
2:B:41:ILE:CG2	2:B:48:ILE:HD11	2.20	0.70
1:C:43:ILE:HD11	1:C:62:LEU:HD13	1.73	0.70
1:A:184:ASP:HA	1:A:208:TYR:O	1.91	0.70
1:A:217:ASP:O	1:A:223:ILE:HG21	1.92	0.70
1:C:196:PRO:O	1:C:199:VAL:HB	1.91	0.70
2:D:35:GLU:HA	2:D:35:GLU:OE2	1.91	0.70
2:B:67:HIS:HD1	2:B:67:HIS:C	1.96	0.69
1:A:120:LEU:O	1:A:120:LEU:HG	1.92	0.69
2:B:14:LYS:H	2:B:14:LYS:CD	2.06	0.69
1:C:211:LEU:HB3	1:C:216:TRP:HZ2	1.57	0.69
1:A:67:TYR:CD2	1:A:89:TYR:HB3	2.28	0.68
1:A:25:ASN:HD22	1:A:25:ASN:C	1.97	0.68
1:C:206:LEU:CD2	1:C:206:LEU:N	2.41	0.68
2:D:33:THR:HG23	2:D:36:GLN:CD	2.13	0.68
1:A:152:PHE:CA	1:A:155:LEU:HD12	2.24	0.68
1:A:199:VAL:HG23	1:A:200:PHE:CE1	2.28	0.68
1:A:20:GLU:O	1:A:23:LYS:HG2	1.94	0.68
1:C:207:GLN:C	1:C:208:TYR:HD1	1.98	0.68
1:C:226:LEU:CD1	1:C:226:LEU:N	2.33	0.68
1:C:97:LEU:HD21	1:C:99:LEU:HD23	1.76	0.68
1:A:159:THR:HG22	1:A:160:GLU:HG3	1.76	0.68

Continued on next page...

Continued from previous page...

Atom-1	Atom-2	Interatomic distance (Å)	Clash overlap (Å)
2:B:28:VAL:HG12	2:B:62:ARG:CZ	2.24	0.67
1:C:83:GLU:OE2	1:C:106:LYS:HE2	1.95	0.67
1:A:155:LEU:O	1:A:158:LEU:HB2	1.94	0.67
1:C:198:GLY:CA	1:C:225:TYR:CE2	2.76	0.67
1:C:72:GLY:HA3	1:C:94:PHE:HE2	1.59	0.67
1:A:200:PHE:HA	1:A:203:LEU:HD11	1.77	0.67
1:C:195:VAL:HG13	1:C:226:LEU:CD2	2.23	0.67
1:C:118:ASN:OD1	1:C:118:ASN:C	2.33	0.67
1:C:196:PRO:HG2	1:C:199:VAL:CG2	2.24	0.66
2:D:1:THR:HG23	2:D:4:LYS:N	2.06	0.66
2:B:15:HIS:HA	3:B:101:1PE:H132	1.78	0.66
1:C:90:LEU:HD23	1:C:113:LEU:HD11	1.77	0.66
1:C:254:SER:CA	1:C:256:ILE:HD13	2.26	0.66
1:C:161:LEU:O	1:C:185:LEU:HD12	1.94	0.66
1:A:152:PHE:HA	1:A:155:LEU:CD1	2.26	0.66
1:A:183:LYS:O	1:A:207:GLN:N	2.29	0.66
1:C:198:GLY:CA	1:C:225:TYR:HE2	2.09	0.65
1:A:139:LEU:HA	1:A:142:ASN:OD1	1.96	0.65
1:A:203:LEU:O	1:A:206:LEU:HB3	1.97	0.65
1:C:116:SER:HB3	1:C:117:PRO:HD2	1.78	0.65
2:B:28:VAL:HG12	2:B:62:ARG:NH2	2.12	0.65
1:C:239:GLY:O	1:C:241:ASP:N	2.30	0.65
1:A:199:VAL:HG23	1:A:200:PHE:HD1	1.59	0.65
1:C:207:GLN:C	1:C:208:TYR:CD1	2.70	0.65
1:C:48:ALA:O	1:C:70:LEU:HA	1.96	0.65
1:C:89:TYR:C	1:C:89:TYR:CD1	2.70	0.65
2:B:2:LEU:HD22	2:B:6:ILE:CD1	2.21	0.65
1:C:72:GLY:N	1:C:94:PHE:CE2	2.65	0.65
1:C:240:PRO:HB3	1:C:252:VAL:CG2	2.27	0.64
1:C:44:ASP:HA	1:C:65:VAL:HA	1.78	0.64
1:C:43:ILE:HD13	1:C:62:LEU:HD13	1.79	0.64
1:A:159:THR:O	1:A:182:LEU:HD12	1.97	0.64
1:C:243:ALA:O	1:C:251:PRO:HD3	1.98	0.64
1:A:44:ASP:O	1:A:65:VAL:HA	1.99	0.63
1:A:111:LYS:HB3	1:A:135:THR:HG23	1.81	0.63
1:A:123:LEU:HG	1:A:144:LEU:HD21	1.81	0.63
1:A:9:ILE:CD1	1:A:35:VAL:CG1	2.76	0.63
1:C:72:GLY:O	1:C:94:PHE:CD2	2.51	0.63
1:A:33:ASP:OD2	1:A:33:ASP:N	2.31	0.63
1:A:72:GLY:HA3	1:A:94:PHE:HE1	1.57	0.63
1:C:118:ASN:OD1	1:C:120:LEU:N	2.32	0.63

Continued on next page...

Continued from previous page...

Atom-1	Atom-2	Interatomic distance (Å)	Clash overlap (Å)
1:C:231:ASN:OD1	1:C:252:VAL:HG13	1.98	0.63
1:C:89:TYR:C	1:C:89:TYR:HD1	2.02	0.63
1:A:8:PRO:O	1:A:12:ILE:HD12	1.98	0.63
2:B:21:CYS:HA	5:B:204:HOH:O	1.98	0.63
1:A:98:GLN:O	1:A:100:PRO:HD3	1.99	0.62
1:A:8:PRO:O	1:A:12:ILE:CD1	2.47	0.62
1:C:199:VAL:N	1:C:225:TYR:OH	2.32	0.62
1:A:225:TYR:HD2	5:A:418:HOH:O	1.80	0.62
1:A:12:ILE:HG23	1:A:61:TYR:HD2	1.64	0.62
1:A:65:VAL:HG12	1:A:87:LEU:HD11	1.81	0.62
1:A:249:GLY:O	1:A:250:LYS:O	2.18	0.62
1:C:127:VAL:HG13	1:C:128:PHE:CD2	2.34	0.62
1:A:199:VAL:CG2	1:A:200:PHE:CE1	2.82	0.62
1:C:119:GLN:HG2	1:C:120:LEU:HD12	1.80	0.61
1:C:219:THR:HB	1:C:221:PRO:HD2	1.81	0.61
1:A:171:LEU:O	1:A:196:PRO:HG3	1.99	0.61
1:C:43:ILE:HD11	1:C:62:LEU:CD1	2.29	0.61
1:C:171:LEU:HD22	1:C:192:LEU:CD2	2.30	0.61
1:A:137:LEU:CD2	1:A:152:PHE:HE1	2.13	0.61
1:A:204:THR:OG1	1:A:205:SER:N	2.29	0.61
2:B:63:ALA:CB	2:B:65:ILE:HD11	2.30	0.61
1:C:196:PRO:HG2	1:C:199:VAL:HG23	1.81	0.61
1:C:44:ASP:HB3	1:C:64:ASN:O	2.00	0.61
1:C:62:LEU:HD23	1:C:62:LEU:N	2.15	0.61
1:C:97:LEU:CD2	1:C:99:LEU:HD23	2.31	0.61
2:B:60:GLN:HB2	2:B:70:MET:HE3	1.83	0.61
1:C:252:VAL:O	1:C:255:ILE:CB	2.49	0.61
1:A:107:LEU:HD22	1:A:107:LEU:N	2.14	0.61
1:A:116:SER:HB3	1:A:117:PRO:HD2	1.82	0.61
1:C:20:GLU:HG3	1:C:23:LYS:NZ	2.16	0.61
1:A:9:ILE:HD11	1:A:35:VAL:CG1	2.18	0.61
1:A:112:GLU:CD	1:A:136:ILE:HD12	2.21	0.61
1:A:192:LEU:H	1:A:192:LEU:HD12	1.67	0.60
1:C:212:HIS:O	1:C:213:ASP:HB2	1.99	0.60
2:D:14:LYS:CG	2:D:15:HIS:NE2	2.58	0.60
1:C:255:ILE:N	1:C:256:ILE:CD1	2.59	0.60
1:A:159:THR:HG23	1:A:183:LYS:HE2	1.84	0.60
1:A:67:TYR:CE2	1:A:89:TYR:CG	2.89	0.60
1:C:6:SER:HA	1:C:35:VAL:O	2.01	0.60
2:D:33:THR:CG2	2:D:36:GLN:NE2	2.65	0.60
1:A:183:LYS:O	1:A:206:LEU:CD1	2.50	0.60

Continued on next page...

Continued from previous page...

Atom-1	Atom-2	Interatomic distance (Å)	Clash overlap (Å)
1:A:244:LYS:HA	1:A:249:GLY:O	2.02	0.59
2:B:29:ASN:OD1	2:B:30:ASN:N	2.35	0.59
1:C:173:LYS:CD	1:C:173:LYS:N	2.41	0.59
1:A:84:LEU:O	1:A:107:LEU:CD1	2.48	0.59
1:C:219:THR:HB	1:C:221:PRO:HG3	1.84	0.59
1:A:197:ASP:HA	1:A:225:TYR:CE2	2.37	0.59
1:A:210:TRP:HE1	1:A:237:VAL:HG11	1.67	0.59
1:A:127:VAL:HG22	1:A:128:PHE:CE1	2.38	0.59
1:C:175:VAL:HG12	1:C:176:PHE:CD2	2.38	0.59
1:A:44:ASP:CA	1:A:64:ASN:O	2.46	0.59
2:B:63:ALA:HB3	2:B:65:ILE:HD11	1.85	0.59
1:C:22:ILE:HG22	1:C:26:LEU:HD12	1.84	0.59
1:A:159:THR:CG2	1:A:183:LYS:HE2	2.33	0.59
1:A:44:ASP:O	1:A:66:ARG:HG2	2.03	0.59
1:A:200:PHE:N	1:A:200:PHE:CD1	2.71	0.59
2:D:54:CYS:HA	2:D:57:VAL:CG1	2.33	0.59
1:C:90:LEU:HD23	1:C:113:LEU:CD1	2.33	0.58
1:A:249:GLY:C	1:A:250:LYS:O	2.39	0.58
1:C:10:LYS:HE3	1:C:31:VAL:CG2	2.32	0.58
1:A:190:ASN:CB	1:A:192:LEU:CD1	2.80	0.58
5:A:406:HOH:O	2:B:15:HIS:HB3	2.03	0.58
1:A:7:THR:C	1:A:34:ALA:HA	2.20	0.58
1:C:227:SER:OG	1:C:255:ILE:CB	2.51	0.58
2:D:14:LYS:HE2	2:D:18:VAL:HG21	1.85	0.58
1:A:206:LEU:CD1	1:A:206:LEU:C	2.65	0.58
1:A:66:ARG:HA	1:A:87:LEU:HA	1.86	0.58
1:C:10:LYS:HE3	1:C:31:VAL:HG21	1.86	0.58
1:A:208:TYR:HB3	1:A:237:VAL:HG23	1.84	0.58
1:A:171:LEU:HD12	1:A:175:VAL:HG11	1.86	0.58
1:A:251:PRO:O	1:A:252:VAL:HB	2.03	0.58
1:C:15:ASP:OD2	1:C:55:SER:N	2.36	0.57
1:C:82:LYS:O	1:C:106:LYS:HB2	2.04	0.57
1:A:1:GLU:C	1:A:2:THR:HG22	2.24	0.57
1:C:106:LYS:CB	5:C:401:HOH:O	2.47	0.57
2:D:14:LYS:HD2	2:D:14:LYS:H	1.68	0.57
1:A:67:TYR:CE2	1:A:89:TYR:CD1	2.92	0.57
1:C:95:ASN:O	1:C:117:PRO:HG2	2.05	0.57
2:D:33:THR:HG23	2:D:36:GLN:HG3	1.85	0.57
2:B:67:HIS:C	2:B:67:HIS:ND1	2.56	0.57
2:D:29:ASN:CB	2:D:37:ARG:HD2	2.35	0.57
1:C:105:ASP:CA	1:C:130:LYS:HG2	2.34	0.56

Continued on next page...

Continued from previous page...

Atom-1	Atom-2	Interatomic distance (Å)	Clash overlap (Å)
1:A:253:ARG:HD2	1:A:253:ARG:H	1.71	0.56
2:D:33:THR:CG2	2:D:36:GLN:CD	2.72	0.56
1:A:179:LEU:N	1:A:179:LEU:HD12	2.17	0.56
1:A:72:GLY:C	1:A:94:PHE:CD1	2.78	0.56
1:C:94:PHE:O	1:C:117:PRO:HD2	2.05	0.56
1:C:71:GLY:HA2	1:C:93:ASP:O	2.05	0.56
1:C:36:THR:OG1	1:C:39:GLU:HG3	2.06	0.56
1:A:200:PHE:CB	1:A:203:LEU:HD12	2.35	0.56
1:C:171:LEU:HB2	1:C:196:PRO:CD	2.35	0.56
1:A:200:PHE:HB3	1:A:203:LEU:HD12	1.86	0.56
1:A:183:LYS:CA	1:A:206:LEU:HA	2.35	0.56
1:C:43:ILE:O	1:C:43:ILE:HG12	2.05	0.56
1:C:89:TYR:HB2	5:C:423:HOH:O	2.05	0.56
2:B:1:THR:HG23	2:B:4:LYS:HB2	1.87	0.56
1:A:13:PHE:CE1	1:A:58:GLY:O	2.59	0.56
1:A:118:ASN:OD1	1:A:118:ASN:C	2.44	0.56
1:A:223:ILE:HD13	1:A:224:ARG:CA	2.34	0.55
1:A:72:GLY:O	1:A:94:PHE:HA	2.06	0.55
1:A:59:ILE:HG21	1:A:81:LEU:HB3	1.87	0.55
1:A:192:LEU:N	1:A:192:LEU:HD12	2.21	0.55
1:A:195:VAL:HG21	1:A:200:PHE:HE1	1.71	0.55
1:C:62:LEU:O	1:C:65:VAL:HG12	2.06	0.55
1:C:6:SER:OG	1:C:34:ALA:HB1	2.05	0.55
1:C:93:ASP:OD2	2:D:44:GLY:HA3	2.06	0.55
1:A:116:SER:HB3	1:A:117:PRO:CD	2.36	0.55
1:A:239:GLY:O	1:A:241:ASP:N	2.39	0.55
1:C:3:ILE:CG2	1:C:5:VAL:O	2.54	0.55
1:A:38:ASN:C	1:A:41:ASN:HD22	2.10	0.55
2:B:28:VAL:HG23	2:B:28:VAL:O	2.07	0.55
1:A:68:LEU:CD2	1:A:70:LEU:HD11	2.28	0.55
1:A:72:GLY:CA	1:A:94:PHE:CD1	2.90	0.55
1:C:83:GLU:OE2	1:C:106:LYS:HG2	2.07	0.55
1:A:36:THR:N	1:A:39:GLU:OE1	2.30	0.55
1:C:243:ALA:CB	1:C:251:PRO:HG2	2.37	0.55
1:A:212:HIS:O	1:A:213:ASP:HB2	2.06	0.54
1:A:243:ALA:O	1:A:251:PRO:HD3	2.06	0.54
1:A:7:THR:O	1:A:35:VAL:N	2.40	0.54
1:A:47:ILE:HG12	1:A:69:ALA:HB3	1.90	0.54
1:A:47:ILE:HD11	1:A:67:TYR:HE1	1.73	0.54
1:A:49:ASN:ND2	2:B:43:LEU:HD13	2.23	0.54
1:C:254:SER:HA	1:C:256:ILE:HD13	1.88	0.54

Continued on next page...

Continued from previous page...

Atom-1	Atom-2	Interatomic distance (Å)	Clash overlap (Å)
2:D:28:VAL:CG1	2:D:62:ARG:NH2	2.70	0.54
1:A:208:TYR:HB3	1:A:237:VAL:CG2	2.38	0.54
1:C:236:VAL:HG11	1:C:240:PRO:HA	1.89	0.54
1:A:23:LYS:HG3	1:A:24:ALA:N	2.22	0.54
1:C:221:PRO:HG2	1:C:223:ILE:CD1	2.37	0.54
1:A:144:LEU:HD12	1:A:166:ASN:OD1	2.08	0.54
1:A:147:LEU:HD23	1:A:148:PRO:HD3	1.90	0.54
1:A:183:LYS:HA	1:A:205:SER:O	2.08	0.54
1:A:88:THR:O	1:A:110:LEU:HB2	2.08	0.53
2:B:14:LYS:CD	2:B:14:LYS:N	2.69	0.53
1:C:254:SER:CA	1:C:256:ILE:CD1	2.86	0.53
1:A:20:GLU:OE2	1:A:31:VAL:HG22	2.08	0.53
1:C:140:ASP:OD1	1:C:140:ASP:N	2.41	0.53
1:A:208:TYR:HD2	1:A:237:VAL:CG2	2.21	0.53
1:A:241:ASP:C	1:A:241:ASP:OD1	2.47	0.53
1:A:44:ASP:HB2	1:A:66:ARG:HD3	1.85	0.53
1:A:7:THR:O	1:A:34:ALA:CB	2.56	0.53
2:B:29:ASN:CB	2:B:37:ARG:HD2	2.36	0.53
2:B:33:THR:N	2:B:36:GLN:OE1	2.34	0.53
1:C:209:ILE:HG22	1:C:236:VAL:HA	1.89	0.53
1:C:68:LEU:HD11	1:C:70:LEU:HD21	1.90	0.53
1:C:73:ASN:HA	1:C:95:ASN:HD22	1.74	0.53
1:A:136:ILE:HD11	3:A:301:1PE:H251	1.89	0.53
1:C:170:SER:N	1:C:192:LEU:HD23	2.23	0.53
1:A:12:ILE:HG23	1:A:61:TYR:CD2	2.42	0.53
2:B:28:VAL:CG1	2:B:62:ARG:CZ	2.87	0.53
2:B:60:GLN:O	2:B:63:ALA:HB3	2.09	0.52
1:C:255:ILE:CA	1:C:256:ILE:HD12	2.39	0.52
1:A:67:TYR:CD2	1:A:89:TYR:CG	2.97	0.52
1:C:7:THR:CG2	1:C:8:PRO:HD2	2.39	0.52
1:A:157:ASN:HD22	1:A:157:ASN:N	2.07	0.52
1:A:1:GLU:HB3	1:A:61:TYR:HE1	1.74	0.52
1:C:60:GLN:HB3	1:C:80:ALA:O	2.10	0.52
1:A:66:ARG:HA	1:A:86:ASN:O	2.09	0.52
1:A:112:GLU:HG3	1:A:136:ILE:HB	1.87	0.52
1:A:193:LYS:HA	1:A:215:PRO:O	2.09	0.52
1:A:72:GLY:O	1:A:94:PHE:CD1	2.62	0.52
1:C:193:LYS:HA	1:C:216:TRP:HA	1.91	0.52
1:C:243:ALA:O	1:C:251:PRO:CD	2.56	0.52
1:A:110:LEU:C	1:A:110:LEU:CD1	2.72	0.52
1:C:152:PHE:HA	1:C:155:LEU:CD1	2.37	0.52

Continued on next page...

Continued from previous page...

Atom-1	Atom-2	Interatomic distance (Å)	Clash overlap (Å)
1:A:223:ILE:CD1	1:A:224:ARG:N	2.58	0.52
1:A:12:ILE:O	1:A:14:PRO:HD3	2.10	0.52
1:A:245:CYS:HB2	1:A:248:SER:OG	2.09	0.52
1:C:258:PRO:O	1:C:259:THR:CB	2.38	0.52
1:C:72:GLY:N	1:C:94:PHE:CD2	2.77	0.52
1:A:1:GLU:HB3	1:A:61:TYR:CE1	2.45	0.51
1:C:128:PHE:HB3	1:C:155:LEU:HD21	1.92	0.51
1:A:43:ILE:HD12	1:A:62:LEU:HD13	1.87	0.51
1:A:72:GLY:N	1:A:94:PHE:CE1	2.77	0.51
1:C:111:LYS:C	1:C:134:LEU:HD12	2.29	0.51
1:C:118:ASN:OD1	1:C:119:GLN:N	2.43	0.51
1:C:171:LEU:CD2	1:C:192:LEU:CD2	2.89	0.51
1:C:68:LEU:HD23	1:C:90:LEU:CD1	2.41	0.51
2:D:9:ILE:HD12	2:D:9:ILE:N	2.24	0.51
1:A:164:SER:HA	1:A:188:SER:O	2.11	0.51
1:C:107:LEU:N	1:C:107:LEU:HD13	2.25	0.51
1:A:60:GLN:HG2	1:A:61:TYR:N	2.25	0.51
1:A:152:PHE:HD1	1:A:155:LEU:CD1	2.24	0.51
1:A:61:TYR:O	1:A:63:PRO:HD3	2.11	0.51
1:A:67:TYR:HD2	1:A:89:TYR:CB	2.20	0.51
1:C:13:PHE:CE2	1:C:22:ILE:HG21	2.45	0.51
1:A:71:GLY:HA2	1:A:93:ASP:O	2.11	0.51
1:A:210:TRP:NE1	1:A:237:VAL:CG1	2.74	0.51
1:A:37:GLN:C	1:A:41:ASN:ND2	2.63	0.51
1:C:185:LEU:O	1:C:209:ILE:HA	2.10	0.51
1:C:112:GLU:N	1:C:134:LEU:HD12	2.25	0.51
1:C:17:ALA:HB3	1:C:53:ILE:CB	2.41	0.51
1:C:199:VAL:HG13	1:C:200:PHE:CD1	2.47	0.50
1:C:237:VAL:C	1:C:239:GLY:H	2.14	0.50
1:C:245:CYS:SG	1:C:249:GLY:O	2.69	0.50
2:D:3:GLN:O	2:D:7:GLU:HG3	2.11	0.50
2:D:28:VAL:HG12	2:D:62:ARG:NH2	2.25	0.50
1:A:59:ILE:HG22	1:A:80:ALA:HB1	1.93	0.50
1:C:17:ALA:HB3	1:C:53:ILE:CA	2.42	0.50
1:C:179:LEU:HB2	1:C:203:LEU:HD21	1.93	0.50
1:A:208:TYR:CD2	1:A:237:VAL:HG22	2.47	0.50
1:A:37:GLN:C	1:A:41:ASN:HD21	2.14	0.50
1:A:196:PRO:CB	1:A:199:VAL:HG13	2.42	0.50
1:A:85:THR:HB	1:A:109:ASN:HD21	1.77	0.50
1:C:119:GLN:N	1:C:119:GLN:OE1	2.32	0.50
1:C:146:SER:HA	1:C:168:LEU:CD2	2.42	0.49

Continued on next page...

Continued from previous page...

Atom-1	Atom-2	Interatomic distance (Å)	Clash overlap (Å)
1:A:232:LYS:O	1:A:233:HIS:CD2	2.65	0.49
1:A:81:LEU:HB2	1:A:84:LEU:HD12	1.94	0.49
2:B:1:THR:O	2:B:4:LYS:HB3	2.13	0.49
2:B:41:ILE:CG2	2:B:48:ILE:CD1	2.89	0.49
1:C:40:LEU:O	1:C:43:ILE:HG23	2.12	0.49
1:A:30:SER:OG	1:A:31:VAL:N	2.44	0.49
1:A:13:PHE:HE1	1:A:58:GLY:C	2.16	0.49
1:A:68:LEU:HB3	1:A:90:LEU:HD12	1.94	0.49
1:C:134:LEU:HD11	1:C:136:ILE:O	2.12	0.49
1:C:220:CYS:O	1:C:221:PRO:C	2.50	0.49
1:A:208:TYR:CD2	1:A:237:VAL:CG2	2.94	0.49
1:C:104:PHE:CZ	1:C:115:LEU:HD21	2.48	0.49
1:C:21:THR:O	1:C:24:ALA:HB3	2.12	0.49
2:B:67:HIS:O	2:B:70:MET:HB2	2.12	0.49
1:C:143:GLN:O	1:C:144:LEU:C	2.49	0.49
1:C:195:VAL:O	1:C:196:PRO:C	2.50	0.49
2:B:62:ARG:O	2:B:64:ASN:OD1	2.31	0.49
1:C:152:PHE:CA	1:C:155:LEU:HD12	2.38	0.49
1:C:195:VAL:O	1:C:195:VAL:HG22	2.13	0.49
2:D:10:ALA:C	2:D:19:LYS:HZ3	2.16	0.49
1:A:185:LEU:O	1:A:209:ILE:HA	2.13	0.49
1:C:63:PRO:O	1:C:86:ASN:HB2	2.13	0.49
2:D:51:PHE:CD1	2:D:51:PHE:C	2.85	0.49
1:C:171:LEU:CD2	1:C:192:LEU:HD22	2.42	0.49
1:C:121:GLN:O	1:C:144:LEU:HA	2.13	0.48
1:A:160:GLU:HA	1:A:182:LEU:CD1	2.43	0.48
1:A:66:ARG:O	1:A:88:THR:N	2.46	0.48
1:A:142:ASN:HB2	1:A:144:LEU:CD1	2.43	0.48
2:D:14:LYS:N	2:D:14:LYS:CD	2.72	0.48
1:A:25:ASN:O	1:A:25:ASN:ND2	2.46	0.48
1:A:43:ILE:HD11	1:A:62:LEU:HD13	1.95	0.48
1:A:204:THR:C	1:A:206:LEU:H	2.15	0.48
1:A:46:ILE:HB	1:A:68:LEU:CD1	2.43	0.48
1:C:180:THR:OG1	1:C:181:GLN:N	2.47	0.48
2:D:13:TYR:O	2:D:19:LYS:HE2	2.14	0.48
1:C:183:LYS:O	1:C:206:LEU:HA	2.12	0.48
1:A:209:ILE:HG12	1:A:210:TRP:N	2.28	0.48
2:D:14:LYS:H	2:D:14:LYS:HD3	1.74	0.48
1:A:112:GLU:HG2	1:A:136:ILE:CG2	2.44	0.48
1:A:139:LEU:CA	1:A:142:ASN:OD1	2.61	0.48
1:A:59:ILE:HA	1:A:59:ILE:HD13	1.72	0.48

Continued on next page...

Continued from previous page...

Atom-1	Atom-2	Interatomic distance (Å)	Clash overlap (Å)
1:A:13:PHE:CZ	1:A:62:LEU:HD21	2.43	0.48
1:A:65:VAL:CG1	1:A:87:LEU:CD1	2.83	0.48
1:A:123:LEU:HG	1:A:144:LEU:CD2	2.43	0.48
1:A:127:VAL:CG2	1:A:128:PHE:CE1	2.97	0.48
1:A:44:ASP:C	1:A:65:VAL:HA	2.34	0.48
1:A:85:THR:HG23	1:A:106:LYS:O	2.12	0.47
1:A:200:PHE:HD1	1:A:200:PHE:H	1.61	0.47
1:C:7:THR:HG22	1:C:8:PRO:HD2	1.94	0.47
2:B:51:PHE:CD1	2:B:51:PHE:C	2.87	0.47
1:C:106:LYS:N	5:C:401:HOH:O	2.34	0.47
1:A:10:LYS:HD3	1:A:31:VAL:CG1	2.44	0.47
1:A:59:ILE:HG22	1:A:80:ALA:CB	2.45	0.47
1:C:107:LEU:CD1	1:C:107:LEU:N	2.76	0.47
1:A:128:PHE:HA	1:A:131:LEU:HD12	1.96	0.47
2:B:6:ILE:HG12	2:B:6:ILE:H	1.51	0.47
1:C:106:LYS:HA	1:C:106:LYS:HD3	1.58	0.47
1:C:207:GLN:O	1:C:208:TYR:CD1	2.67	0.47
1:A:15:ASP:OD2	1:A:55:SER:CA	2.63	0.47
1:C:104:PHE:HZ	1:C:115:LEU:HD21	1.79	0.47
1:C:184:ASP:N	1:C:184:ASP:OD1	2.46	0.47
1:C:89:TYR:OH	2:D:15:HIS:ND1	2.48	0.47
2:D:32:GLU:OE1	2:D:37:ARG:HA	2.14	0.47
1:A:25:ASN:ND2	1:A:25:ASN:C	2.66	0.47
1:C:50:ASN:OD1	1:C:52:ASP:HB2	2.14	0.47
1:C:54:LYS:O	1:C:76:HIS:N	2.33	0.47
1:C:8:PRO:HA	1:C:33:ASP:O	2.14	0.47
1:A:199:VAL:CG2	1:A:200:PHE:CD1	2.90	0.47
1:A:43:ILE:HD11	1:A:65:VAL:CG2	2.45	0.47
1:A:46:ILE:HB	1:A:68:LEU:HD12	1.97	0.47
2:B:15:HIS:HB2	2:B:18:VAL:HG23	1.97	0.47
1:C:219:THR:O	1:C:223:ILE:CG1	2.63	0.47
1:C:183:LYS:HG2	1:C:207:GLN:NE2	2.30	0.47
1:C:195:VAL:HG23	1:C:199:VAL:HG11	1.97	0.47
1:C:20:GLU:HG3	1:C:23:LYS:HZ2	1.79	0.47
1:A:13:PHE:CE1	1:A:58:GLY:C	2.88	0.47
1:C:219:THR:CB	1:C:221:PRO:HD2	2.45	0.47
1:A:9:ILE:HG12	1:A:35:VAL:HG13	1.96	0.46
2:B:41:ILE:HG21	2:B:48:ILE:CD1	2.45	0.46
1:C:203:LEU:C	1:C:206:LEU:HD21	2.33	0.46
1:A:175:VAL:HG13	1:A:176:PHE:CG	2.50	0.46
1:A:7:THR:C	1:A:34:ALA:CB	2.83	0.46

Continued on next page...

Continued from previous page...

Atom-1	Atom-2	Interatomic distance (Å)	Clash overlap (Å)
1:A:60:GLN:HB3	1:A:80:ALA:O	2.15	0.46
2:B:49:LYS:HB2	2:B:49:LYS:HE2	1.37	0.46
1:C:219:THR:CA	1:C:221:PRO:HD2	2.40	0.46
2:D:14:LYS:NZ	2:D:18:VAL:HG11	2.31	0.46
1:A:104:PHE:CE2	1:A:115:LEU:HD11	2.50	0.46
1:A:249:GLY:O	1:A:250:LYS:C	2.54	0.46
1:C:23:LYS:O	1:C:27:LYS:N	2.48	0.46
2:D:43:LEU:HD12	2:D:47:CYS:SG	2.56	0.46
1:A:116:SER:CA	1:A:142:ASN:HD22	2.28	0.46
1:C:208:TYR:N	1:C:208:TYR:CD1	2.84	0.46
1:A:13:PHE:HE1	1:A:58:GLY:O	1.97	0.46
1:C:247:GLY:O	1:C:248:SER:OG	2.30	0.46
2:D:38:ALA:O	2:D:41:ILE:HB	2.16	0.46
1:C:195:VAL:CG2	1:C:199:VAL:HG11	2.46	0.46
1:A:116:SER:CA	1:A:142:ASN:ND2	2.79	0.46
1:A:17:ALA:HB1	1:A:53:ILE:HG13	1.98	0.46
1:A:17:ALA:HB3	1:A:53:ILE:HA	1.98	0.46
2:D:14:LYS:CD	2:D:15:HIS:HD2	2.29	0.46
2:D:4:LYS:CA	2:D:4:LYS:HE3	2.46	0.46
1:C:139:LEU:HA	1:C:139:LEU:HD23	1.83	0.46
1:C:175:VAL:CG1	1:C:176:PHE:CD2	2.99	0.46
3:B:101:1PE:H262	2:D:16:SER:HB3	1.98	0.46
2:D:29:ASN:HB2	2:D:37:ARG:NH1	2.31	0.45
2:D:11:ALA:HA	2:D:19:LYS:NZ	2.31	0.45
1:C:93:ASP:CG	2:D:44:GLY:HA3	2.37	0.45
1:C:69:ALA:CB	1:C:91:PHE:HB3	2.47	0.45
1:A:116:SER:C	1:A:142:ASN:HD22	2.19	0.45
1:A:158:LEU:HD21	1:A:161:LEU:HB2	1.98	0.45
1:A:186:SER:HB2	1:A:210:TRP:CE3	2.51	0.45
3:A:301:1PE:H161	2:B:14:LYS:HE2	1.98	0.45
1:C:123:LEU:O	1:C:148:PRO:CG	2.64	0.45
1:C:219:THR:O	1:C:221:PRO:HD2	2.06	0.45
1:C:50:ASN:OD1	1:C:52:ASP:N	2.50	0.45
1:A:157:ASN:H	1:A:157:ASN:HD22	1.65	0.45
1:C:56:VAL:HG23	1:C:80:ALA:HB3	1.98	0.45
1:A:104:PHE:HA	1:A:107:LEU:CD2	2.47	0.45
1:A:128:PHE:O	1:A:131:LEU:HB2	2.16	0.45
1:A:137:LEU:CD2	1:A:152:PHE:CE1	2.98	0.45
1:A:8:PRO:HA	1:A:34:ALA:HA	1.98	0.45
1:C:218:CYS:HB2	1:C:245:CYS:HB3	1.32	0.45
2:B:2:LEU:CD2	2:B:6:ILE:HD11	2.31	0.45

Continued on next page...

Continued from previous page...

Atom-1	Atom-2	Interatomic distance (Å)	Clash overlap (Å)
1:C:49:ASN:HB2	2:D:17:VAL:CG1	2.47	0.45
2:D:2:LEU:CD1	2:D:6:ILE:HD11	2.46	0.45
1:A:62:LEU:H	1:A:62:LEU:HG	1.59	0.45
1:A:54:LYS:O	1:A:76:HIS:HB2	2.16	0.45
1:A:92:LEU:O	1:A:116:SER:OG	2.34	0.44
1:A:140:ASP:N	1:A:140:ASP:OD1	2.50	0.44
1:C:220:CYS:O	1:C:221:PRO:O	2.35	0.44
1:C:225:TYR:HD1	1:C:226:LEU:CA	2.28	0.44
1:C:27:LYS:HB2	1:C:27:LYS:HE3	1.92	0.44
2:B:66:SER:O	2:B:69:ASP:N	2.51	0.44
1:C:110:LEU:HD13	1:C:113:LEU:HD13	1.98	0.44
1:A:197:ASP:HA	1:A:225:TYR:CD2	2.52	0.44
1:A:208:TYR:HD2	1:A:237:VAL:HG22	1.81	0.44
1:C:175:VAL:CG1	1:C:176:PHE:N	2.80	0.44
1:C:159:THR:HG23	1:C:183:LYS:HD3	1.99	0.44
2:D:11:ALA:HA	2:D:19:LYS:HZ1	1.82	0.44
1:A:107:LEU:H	1:A:107:LEU:CD2	2.23	0.44
1:C:104:PHE:HB3	1:C:131:LEU:HD21	2.00	0.44
1:A:85:THR:HB	1:A:109:ASN:ND2	2.31	0.44
1:A:175:VAL:HG13	1:A:176:PHE:N	2.32	0.44
1:A:232:LYS:C	1:A:233:HIS:CD2	2.91	0.44
1:C:142:ASN:HB3	1:C:144:LEU:HG	2.00	0.44
2:D:14:LYS:HZ3	2:D:18:VAL:HG11	1.83	0.44
1:A:147:LEU:HA	1:A:148:PRO:HD3	1.63	0.44
1:A:89:TYR:CE1	1:A:91:PHE:HB2	2.53	0.44
1:C:84:LEU:HA	1:C:84:LEU:HD23	1.65	0.44
2:D:65:ILE:CG2	2:D:69:ASP:HB2	2.48	0.44
2:D:70:MET:O	2:D:71:GLN:C	2.56	0.44
1:A:3:ILE:HD13	1:A:7:THR:OG1	2.18	0.44
1:A:77:ASP:C	1:A:79:SER:H	2.21	0.44
1:C:61:TYR:O	1:C:62:LEU:HD23	2.17	0.44
2:D:33:THR:HG21	2:D:36:GLN:NE2	2.32	0.44
1:C:192:LEU:O	1:C:215:PRO:HD2	2.18	0.43
1:C:8:PRO:HA	1:C:34:ALA:HA	1.98	0.43
1:C:97:LEU:CD2	1:C:99:LEU:CD2	2.96	0.43
1:C:111:LYS:HA	1:C:134:LEU:HA	1.99	0.43
1:C:69:ALA:HA	1:C:91:PHE:O	2.18	0.43
1:A:67:TYR:CD2	1:A:89:TYR:CB	2.97	0.43
1:A:75:LEU:CD2	1:A:78:ILE:HG22	2.48	0.43
1:C:10:LYS:HE3	1:C:31:VAL:HG22	2.01	0.43
1:A:115:LEU:C	1:A:142:ASN:HD21	2.21	0.43

Continued on next page...

Continued from previous page...

Atom-1	Atom-2	Interatomic distance (Å)	Clash overlap (Å)
1:A:22:ILE:HG23	1:A:26:LEU:CD1	2.42	0.43
2:B:63:ALA:O	2:B:64:ASN:CB	2.67	0.43
1:C:154:LYS:HD2	1:C:154:LYS:HA	1.72	0.43
1:C:44:ASP:CA	1:C:65:VAL:HA	2.47	0.43
1:A:89:TYR:C	1:A:89:TYR:CD1	2.92	0.43
2:B:9:ILE:HD13	2:B:57:VAL:HG21	1.99	0.43
1:C:244:LYS:HA	1:C:251:PRO:HD3	2.00	0.43
1:C:250:LYS:HA	1:C:251:PRO:HD3	1.83	0.43
1:A:9:ILE:HB	1:A:31:VAL:O	2.18	0.43
1:A:182:LEU:HD12	1:A:183:LYS:N	2.34	0.43
1:A:112:GLU:CG	1:A:136:ILE:CB	2.87	0.43
1:A:161:LEU:HD11	1:A:163:LEU:HD21	2.01	0.43
1:A:6:SER:OG	1:A:34:ALA:HB1	2.19	0.43
1:C:151:VAL:HG13	1:C:152:PHE:CG	2.54	0.43
2:D:6:ILE:HA	2:D:9:ILE:HD13	2.00	0.43
1:A:189:TYR:CE1	1:A:213:ASP:OD1	2.72	0.43
1:A:40:LEU:O	1:A:43:ILE:HG23	2.18	0.43
1:C:243:ALA:HB3	1:C:251:PRO:HG2	2.00	0.43
1:C:92:LEU:HD12	1:C:115:LEU:HD23	2.01	0.43
1:A:139:LEU:C	1:A:142:ASN:OD1	2.57	0.42
1:A:196:PRO:HD2	1:A:199:VAL:CG1	2.43	0.42
1:C:183:LYS:C	1:C:184:ASP:OD1	2.56	0.42
1:C:239:GLY:C	1:C:241:ASP:N	2.72	0.42
1:A:159:THR:O	1:A:182:LEU:CD1	2.65	0.42
1:A:59:ILE:HG22	1:A:80:ALA:C	2.39	0.42
1:C:20:GLU:HG3	1:C:23:LYS:HZ3	1.81	0.42
1:C:82:LYS:O	1:C:106:LYS:CG	2.65	0.42
2:D:2:LEU:C	2:D:2:LEU:HD13	2.40	0.42
1:A:116:SER:HA	1:A:142:ASN:ND2	2.33	0.42
1:C:67:TYR:HA	1:C:89:TYR:O	2.19	0.42
1:C:116:SER:CB	1:C:117:PRO:HD2	2.47	0.42
1:C:198:GLY:HA2	1:C:225:TYR:CE2	2.37	0.42
1:C:78:ILE:HD13	1:C:97:LEU:HD21	2.01	0.42
1:C:123:LEU:O	1:C:148:PRO:HG3	2.19	0.42
1:A:88:THR:CA	1:A:110:LEU:HA	2.42	0.42
1:A:49:ASN:N	5:A:402:HOH:O	2.39	0.42
1:C:255:ILE:C	1:C:256:ILE:HD12	2.31	0.42
1:C:97:LEU:HD22	1:C:99:LEU:HG	2.00	0.42
1:A:12:ILE:CD1	1:A:12:ILE:H	2.26	0.42
1:C:130:LYS:HD2	1:C:130:LYS:N	2.34	0.42
1:C:135:THR:OG1	1:C:136:ILE:HG13	2.20	0.42

Continued on next page...

Continued from previous page...

Atom-1	Atom-2	Interatomic distance (Å)	Clash overlap (Å)
1:C:62:LEU:O	1:C:65:VAL:CG1	2.68	0.42
2:B:63:ALA:HB3	2:B:65:ILE:CD1	2.49	0.42
1:C:154:LYS:O	1:C:156:THR:N	2.53	0.42
1:A:12:ILE:HD12	1:A:12:ILE:N	2.24	0.42
1:A:161:LEU:HD12	1:A:162:ASP:N	2.35	0.42
1:A:157:ASN:ND2	1:A:157:ASN:N	2.68	0.41
1:A:20:GLU:HG3	1:A:23:LYS:HE2	2.02	0.41
1:C:151:VAL:HG13	1:C:152:PHE:CD2	2.55	0.41
1:C:81:LEU:C	1:C:83:GLU:H	2.23	0.41
1:A:199:VAL:HG21	1:A:200:PHE:CE1	2.55	0.41
1:C:113:LEU:HA	1:C:113:LEU:HD12	1.91	0.41
1:C:26:LEU:HD21	1:C:43:ILE:CG2	2.51	0.41
1:A:140:ASP:O	1:A:141:MET:HB2	2.20	0.41
1:A:161:LEU:O	1:A:185:LEU:HD12	2.20	0.41
1:C:243:ALA:HB1	1:C:251:PRO:HG2	2.02	0.41
2:D:5:LYS:O	2:D:9:ILE:HD12	2.13	0.41
1:C:183:LYS:HE3	1:C:207:GLN:HE22	1.85	0.41
1:C:226:LEU:O	1:C:230:ILE:HG13	2.20	0.41
1:C:72:GLY:O	1:C:94:PHE:CA	2.57	0.41
2:D:2:LEU:O	2:D:2:LEU:HD13	2.20	0.41
2:B:63:ALA:CB	2:B:65:ILE:CD1	2.97	0.41
1:C:225:TYR:N	1:C:226:LEU:HD12	2.36	0.41
1:A:90:LEU:HD23	1:A:113:LEU:HD12	2.00	0.41
1:C:151:VAL:CG1	1:C:152:PHE:CD2	3.03	0.41
1:C:83:GLU:OE2	1:C:106:LYS:CG	2.69	0.41
1:C:127:VAL:HG13	1:C:128:PHE:CG	2.56	0.41
1:C:243:ALA:C	1:C:244:LYS:HD2	2.36	0.41
1:C:46:ILE:HG22	1:C:47:ILE:N	2.35	0.41
2:B:26:ALA:O	2:B:27:CYS:C	2.58	0.41
1:A:43:ILE:HD11	1:A:65:VAL:HG22	2.02	0.41
1:A:6:SER:OG	1:A:34:ALA:CB	2.69	0.41
1:C:119:GLN:HE21	1:C:120:LEU:HD13	1.86	0.41
1:C:73:ASN:HA	1:C:95:ASN:ND2	2.35	0.41
2:D:10:ALA:O	2:D:13:TYR:N	2.53	0.41
1:C:146:SER:HA	1:C:168:LEU:HD23	2.03	0.41
2:D:33:THR:O	2:D:34:CYS:C	2.58	0.41
1:A:179:LEU:HD22	1:A:182:LEU:HD22	2.03	0.40
1:A:1:GLU:C	1:A:2:THR:CG2	2.88	0.40
2:B:54:CYS:O	2:B:57:VAL:CG2	2.69	0.40
1:C:73:ASN:O	1:C:95:ASN:HB2	2.21	0.40
1:C:86:ASN:HA	1:C:86:ASN:HD22	1.64	0.40

Continued on next page...

Continued from previous page...

Atom-1	Atom-2	Interatomic distance (Å)	Clash overlap (Å)
1:C:186:SER:O	1:C:187:LEU:HD23	2.21	0.40
1:C:216:TRP:CD1	1:C:244:LYS:O	2.63	0.40
1:C:72:GLY:C	1:C:94:PHE:HD2	2.20	0.40
1:A:209:ILE:N	1:A:235:GLY:O	2.54	0.40
1:C:176:PHE:CE1	1:C:185:LEU:HD21	2.56	0.40
1:A:161:LEU:HD12	1:A:161:LEU:C	2.42	0.40
1:A:242:SER:OG	1:A:243:ALA:N	2.55	0.40
1:C:171:LEU:HA	1:C:171:LEU:HD13	1.95	0.40
1:C:100:PRO:HD2	1:C:103:VAL:HB	2.02	0.40

There are no symmetry-related clashes.

5.3 Torsion angles [i](#)

5.3.1 Protein backbone [i](#)

In the following table, the Percentiles column shows the percent Ramachandran outliers of the chain as a percentile score with respect to all X-ray entries followed by that with respect to entries of similar resolution.

The Analysed column shows the number of residues for which the backbone conformation was analysed, and the total number of residues.

Mol	Chain	Analysed	Favoured	Allowed	Outliers	Percentiles	
1	A	252/261 (97%)	224 (89%)	22 (9%)	6 (2%)	7	7
1	C	256/261 (98%)	226 (88%)	26 (10%)	4 (2%)	11	15
2	B	70/75 (93%)	62 (89%)	8 (11%)	0	100	100
2	D	70/75 (93%)	63 (90%)	7 (10%)	0	100	100
All	All	648/672 (96%)	575 (89%)	63 (10%)	10 (2%)	12	16

All (10) Ramachandran outliers are listed below:

Mol	Chain	Res	Type
1	A	252	VAL
1	C	254	SER
1	A	240	PRO
1	C	253	ARG
1	C	240	PRO
1	C	256	ILE

Continued on next page...

Continued from previous page...

Mol	Chain	Res	Type
1	A	222	GLY
1	A	250	LYS
1	A	56	VAL
1	A	251	PRO

5.3.2 Protein sidechains ⓘ

In the following table, the Percentiles column shows the percent sidechain outliers of the chain as a percentile score with respect to all X-ray entries followed by that with respect to entries of similar resolution.

The Analysed column shows the number of residues for which the sidechain conformation was analysed, and the total number of residues.

Mol	Chain	Analysed	Rotameric	Outliers	Percentiles	
1	A	215/237 (91%)	168 (78%)	47 (22%)	1	1
1	C	229/237 (97%)	176 (77%)	53 (23%)	1	1
2	B	58/64 (91%)	46 (79%)	12 (21%)	1	1
2	D	59/64 (92%)	50 (85%)	9 (15%)	3	4
All	All	561/602 (93%)	440 (78%)	121 (22%)	1	1

All (121) residues with a non-rotameric sidechain are listed below:

Mol	Chain	Res	Type
1	A	2	THR
1	A	3	ILE
1	A	7	THR
1	A	20	GLU
1	A	22	ILE
1	A	25	ASN
1	A	32	THR
1	A	33	ASP
1	A	36	THR
1	A	38	ASN
1	A	42	SER
1	A	43	ILE
1	A	44	ASP
1	A	45	GLN
1	A	50	ASN
1	A	55	SER
1	A	56	VAL

Continued on next page...

Continued from previous page...

Mol	Chain	Res	Type
1	A	59	ILE
1	A	60	GLN
1	A	62	LEU
1	A	66	ARG
1	A	77	ASP
1	A	84	LEU
1	A	85	THR
1	A	87	LEU
1	A	88	THR
1	A	96	GLN
1	A	97	LEU
1	A	107	LEU
1	A	110	LEU
1	A	120	LEU
1	A	135	THR
1	A	157	ASN
1	A	160	GLU
1	A	179	LEU
1	A	183	LYS
1	A	184	ASP
1	A	197	ASP
1	A	199	VAL
1	A	200	PHE
1	A	206	LEU
1	A	208	TYR
1	A	223	ILE
1	A	241	ASP
1	A	248	SER
1	A	252	VAL
1	A	253	ARG
2	B	0	SER
2	B	1	THR
2	B	4	LYS
2	B	6	ILE
2	B	17	VAL
2	B	41	ILE
2	B	42	SER
2	B	47	CYS
2	B	49	LYS
2	B	64	ASN
2	B	65	ILE
2	B	67	HIS

Continued on next page...

Continued from previous page...

Mol	Chain	Res	Type
1	C	0	LEU
1	C	1	GLU
1	C	2	THR
1	C	3	ILE
1	C	6	SER
1	C	20	GLU
1	C	33	ASP
1	C	43	ILE
1	C	44	ASP
1	C	45	GLN
1	C	51	SER
1	C	53	ILE
1	C	59	ILE
1	C	65	VAL
1	C	70	LEU
1	C	77	ASP
1	C	81	LEU
1	C	86	ASN
1	C	89	TYR
1	C	93	ASP
1	C	106	LYS
1	C	107	LEU
1	C	118	ASN
1	C	130	LYS
1	C	131	LEU
1	C	135	THR
1	C	142	ASN
1	C	144	LEU
1	C	145	GLN
1	C	149	LYS
1	C	155	LEU
1	C	169	GLN
1	C	173	LYS
1	C	175	VAL
1	C	184	ASP
1	C	194	SER
1	C	195	VAL
1	C	199	VAL
1	C	206	LEU
1	C	208	TYR
1	C	211	LEU
1	C	214	ASN

Continued on next page...

Continued from previous page...

Mol	Chain	Res	Type
1	C	217	ASP
1	C	219	THR
1	C	225	TYR
1	C	226	LEU
1	C	228	GLU
1	C	233	HIS
1	C	237	VAL
1	C	245	CYS
1	C	253	ARG
1	C	256	ILE
1	C	259	THR
2	D	4	LYS
2	D	14	LYS
2	D	16	SER
2	D	17	VAL
2	D	30	ASN
2	D	33	THR
2	D	51	PHE
2	D	53	GLU
2	D	69	ASP

Some sidechains can be flipped to improve hydrogen bonding and reduce clashes. All (13) such sidechains are listed below:

Mol	Chain	Res	Type
1	A	25	ASN
1	A	37	GLN
1	A	41	ASN
1	A	64	ASN
1	A	109	ASN
1	A	142	ASN
1	A	157	ASN
1	A	231	ASN
1	A	233	HIS
1	C	73	ASN
1	C	95	ASN
1	C	207	GLN
2	D	36	GLN

5.3.3 RNA ⓘ

There are no RNA molecules in this entry.

5.4 Non-standard residues in protein, DNA, RNA chains ⓘ

There are no non-standard protein/DNA/RNA residues in this entry.

5.5 Carbohydrates ⓘ

There are no carbohydrates in this entry.

5.6 Ligand geometry ⓘ

10 ligands are modelled in this entry.

In the following table, the Counts columns list the number of bonds (or angles) for which Mogul statistics could be retrieved, the number of bonds (or angles) that are observed in the model and the number of bonds (or angles) that are defined in the chemical component dictionary. The Link column lists molecule types, if any, to which the group is linked. The Z score for a bond length (or angle) is the number of standard deviations the observed value is removed from the expected value. A bond length (or angle) with $|Z| > 2$ is considered an outlier worth inspection. RMSZ is the root-mean-square of all Z scores of the bond lengths (or angles).

Mol	Type	Chain	Res	Link	Bond lengths			Bond angles		
					Counts	RMSZ	$\# Z > 2$	Counts	RMSZ	$\# Z > 2$
3	1PE	A	301	-	15,15,15	0.83	0	14,14,14	1.11	1 (7%)
4	SO4	A	302	-	4,4,4	0.42	0	6,6,6	0.17	0
4	SO4	A	303	-	4,4,4	0.48	0	6,6,6	0.11	0
4	SO4	A	304	-	4,4,4	0.40	0	6,6,6	0.26	0
3	1PE	B	101	-	15,15,15	0.89	0	14,14,14	1.28	1 (7%)
4	SO4	B	102	-	4,4,4	0.48	0	6,6,6	0.16	0
4	SO4	C	301	-	4,4,4	0.43	0	6,6,6	0.18	0
4	SO4	C	302	-	4,4,4	0.55	0	6,6,6	0.14	0
4	SO4	C	303	-	4,4,4	0.46	0	6,6,6	0.23	0
4	SO4	D	101	-	4,4,4	0.44	0	6,6,6	0.15	0

In the following table, the Chirals column lists the number of chiral outliers, the number of chiral centers analysed, the number of these observed in the model and the number defined in the chemical component dictionary. Similar counts are reported in the Torsion and Rings columns. '-' means no outliers of that kind were identified.

Mol	Type	Chain	Res	Link	Chirals	Torsions	Rings
3	1PE	A	301	-	-	0/13/13/13	0/0/0/0
4	SO4	A	302	-	-	0/0/0/0	0/0/0/0
4	SO4	A	303	-	-	0/0/0/0	0/0/0/0
4	SO4	A	304	-	-	0/0/0/0	0/0/0/0

Continued on next page...

Continued from previous page...

Mol	Type	Chain	Res	Link	Chirals	Torsions	Rings
3	1PE	B	101	-	-	0/13/13/13	0/0/0/0
4	SO4	B	102	-	-	0/0/0/0	0/0/0/0
4	SO4	C	301	-	-	0/0/0/0	0/0/0/0
4	SO4	C	302	-	-	0/0/0/0	0/0/0/0
4	SO4	C	303	-	-	0/0/0/0	0/0/0/0
4	SO4	D	101	-	-	0/0/0/0	0/0/0/0

There are no bond length outliers.

All (2) bond angle outliers are listed below:

Mol	Chain	Res	Type	Atoms	Z	Observed(°)	Ideal(°)
3	A	301	1PE	C23-OH3-C22	2.41	123.76	113.30
3	B	101	1PE	C23-OH3-C22	3.04	126.48	113.30

There are no chirality outliers.

There are no torsion outliers.

There are no ring outliers.

2 monomers are involved in 4 short contacts:

Mol	Chain	Res	Type	Clashes	Symm-Clashes
3	A	301	1PE	2	0
3	B	101	1PE	2	0

5.7 Other polymers [i](#)

There are no such residues in this entry.

5.8 Polymer linkage issues [i](#)

There are no chain breaks in this entry.

6 Fit of model and data ⓘ

6.1 Protein, DNA and RNA chains ⓘ

In the following table, the column labelled ‘#RSRZ> 2’ contains the number (and percentage) of RSRZ outliers, followed by percent RSRZ outliers for the chain as percentile scores relative to all X-ray entries and entries of similar resolution. The OWAB column contains the minimum, median, 95th percentile and maximum values of the occupancy-weighted average B-factor per residue. The column labelled ‘Q< 0.9’ lists the number of (and percentage) of residues with an average occupancy less than 0.9.

Mol	Chain	Analysed	<RSRZ>	#RSRZ>2	OWAB(Å ²)	Q<0.9
1	A	254/261 (97%)	-0.14	6 (2%) 59 56	30, 65, 97, 135	0
1	C	260/261 (99%)	-0.26	0 100 100	26, 55, 90, 121	0
2	B	72/75 (96%)	-0.20	2 (2%) 53 51	31, 49, 95, 118	0
2	D	72/75 (96%)	-0.36	1 (1%) 75 74	30, 50, 102, 128	0
All	All	658/672 (97%)	-0.22	9 (1%) 75 74	26, 57, 95, 135	0

All (9) RSRZ outliers are listed below:

Mol	Chain	Res	Type	RSRZ
2	B	0	SER	3.3
2	D	0	SER	2.7
1	A	249	GLY	2.6
1	A	4	THR	2.4
1	A	253	ARG	2.3
1	A	235	GLY	2.2
1	A	87	LEU	2.2
2	B	70	MET	2.1
1	A	32	THR	2.1

6.2 Non-standard residues in protein, DNA, RNA chains ⓘ

There are no non-standard protein/DNA/RNA residues in this entry.

6.3 Carbohydrates ⓘ

There are no carbohydrates in this entry.

6.4 Ligands [i](#)

In the following table, the Atoms column lists the number of modelled atoms in the group and the number defined in the chemical component dictionary. LLDF column lists the quality of electron density of the group with respect to its neighbouring residues in protein, DNA or RNA chains. The B-factors column lists the minimum, median, 95th percentile and maximum values of B factors of atoms in the group. The column labelled 'Q< 0.9' lists the number of atoms with occupancy less than 0.9.

Mol	Type	Chain	Res	Atoms	RSCC	RSR	LLDF	B-factors(Å ²)	Q<0.9
4	SO4	A	302	5/5	0.78	0.37	6.34	162,162,171,172	0
4	SO4	C	301	5/5	0.85	0.43	5.32	155,161,164,168	0
3	1PE	A	301	16/16	0.86	0.22	1.76	57,75,101,103	0
3	1PE	B	101	16/16	0.88	0.11	-0.89	73,80,86,89	0
4	SO4	A	304	5/5	0.90	0.33	-	108,118,121,122	0
4	SO4	B	102	5/5	0.93	0.33	-	123,131,132,135	0
4	SO4	D	101	5/5	0.91	0.39	-	132,132,135,136	0
4	SO4	C	302	5/5	0.47	0.44	-	161,167,168,169	0
4	SO4	C	303	5/5	0.88	0.32	-	108,109,118,130	0
4	SO4	A	303	5/5	0.85	0.21	-	127,129,134,144	0

6.5 Other polymers [i](#)

There are no such residues in this entry.