



Full wwPDB X-ray Structure Validation Report ⓘ

Feb 13, 2017 – 01:08 pm GMT

PDB ID : 1BDA
Title : CATALYTIC DOMAIN OF HUMAN SINGLE CHAIN TISSUE PLASMINOGEN ACTIVATOR IN COMPLEX WITH DANSYL-EGR-CMK (DANSYL-GLU-GLY-ARG CHLOROMETHYL KETONE)
Authors : Bode, W.; Renatus, M.; Engh, R.A.
Deposited on : 1998-05-07
Resolution : 3.35 Å(reported)

This is a Full wwPDB X-ray Structure Validation Report for a publicly released PDB entry.

We welcome your comments at validation@mail.wwpdb.org

A user guide is available at

<http://wwpdb.org/validation/2016/XrayValidationReportHelp>

with specific help available everywhere you see the ⓘ symbol.

The following versions of software and data (see [references ⓘ](#)) were used in the production of this report:

MolProbity : 4.02b-467
Mogul : 1.7.2 (RC1), CSD as538be (2017)
Xtriage (Phenix) : NOT EXECUTED
EDS : NOT EXECUTED
Percentile statistics : 20161228.v01 (using entries in the PDB archive December 28th 2016)
Ideal geometry (proteins) : Engh & Huber (2001)
Ideal geometry (DNA, RNA) : Parkinson et al. (1996)
Validation Pipeline (wwPDB-VP) : recalc28949

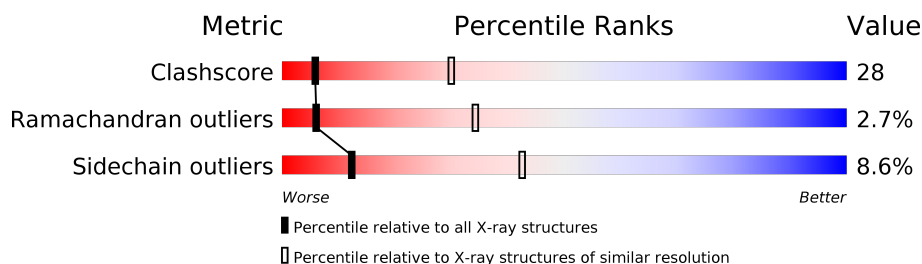
1 Overall quality at a glance

The following experimental techniques were used to determine the structure:

X-RAY DIFFRACTION

The reported resolution of this entry is 3.35 Å.

Percentile scores (ranging between 0-100) for global validation metrics of the entry are shown in the following graphic. The table shows the number of entries on which the scores are based.



Metric	Whole archive (#Entries)	Similar resolution (#Entries, resolution range(Å))
Clashscore	112137	1231 (3.42-3.30)
Ramachandran outliers	110173	1212 (3.42-3.30)
Sidechain outliers	110143	1211 (3.42-3.30)

The table below summarises the geometric issues observed across the polymeric chains and their fit to the electron density. The red, orange, yellow and green segments on the lower bar indicate the fraction of residues that contain outliers for ≥ 3 , 2, 1 and 0 types of geometric quality criteria. A grey segment represents the fraction of residues that are not modelled. The numeric value for each fraction is indicated below the corresponding segment, with a dot representing fractions $\leq 5\%$. The upper red bar (where present) indicates the fraction of residues that have poor fit to the electron density. The numeric value is given above the bar.

Note EDS was not executed.

Mol	Chain	Length	Quality of chain
1	A	265	
1	B	265	

2 Entry composition [i](#)

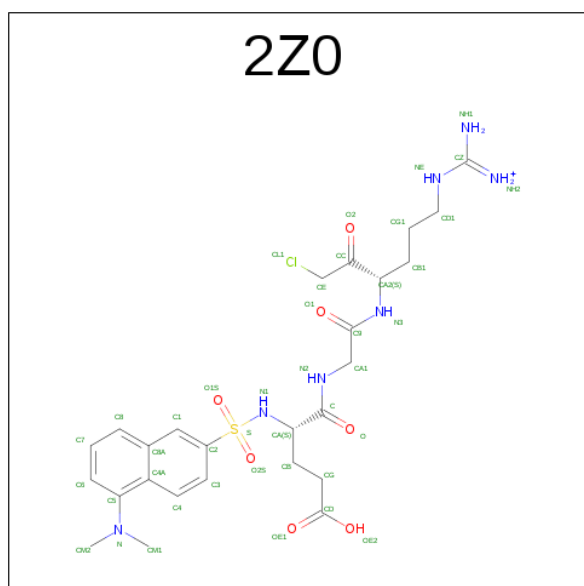
There are 3 unique types of molecules in this entry. The entry contains 4271 atoms, of which 0 are hydrogens and 0 are deuteriums.

In the tables below, the ZeroOcc column contains the number of atoms modelled with zero occupancy, the AltConf column contains the number of residues with at least one atom in alternate conformation and the Trace column contains the number of residues modelled with at most 2 atoms.

- Molecule 1 is a protein called SINGLE CHAIN TISSUE TYPE PLASMINOGEN ACTIVATOR.

Mol	Chain	Residues	Atoms					ZeroOcc	AltConf	Trace
1	A	265	Total	C	N	O	S	142	0	0
			2085	1306	374	390	15			
1	B	265	Total	C	N	O	S	162	0	0
			2085	1306	374	390	15			

- Molecule 2 is N-{[5-(DIMETHYLAMINO)NAPHTHALEN-2-YL]SULFONYL}-L-ALPHA-GLUTAMYL-N-[(1S)-4-{[AMINO(IMINIO)METHYL]AMINO}-1-(CHLOROACETYL)BUTYL]GLYCINAMIDE (three-letter code: 2Z0) (formula: C₂₆H₃₇ClN₇O₇S).



Mol	Chain	Residues	Atoms					ZeroOcc	AltConf
2	A	1	Total	C	N	O	S	0	0
			41	26	7	7	1		
2	B	1	Total	C	N	O	S	0	0
			41	26	7	7	1		

- Molecule 3 is water.

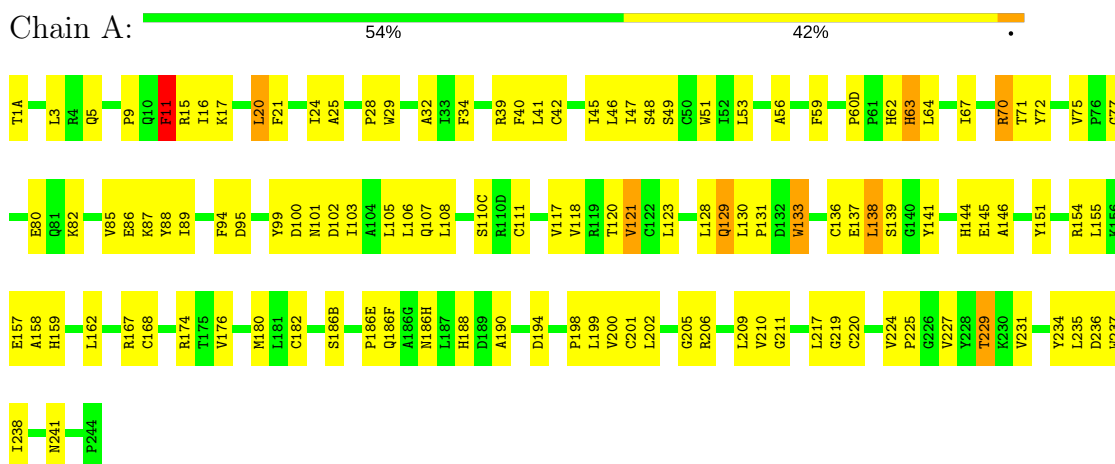
Mol	Chain	Residues	Atoms		ZeroOcc	AltConf
3	A	11	Total	O	0	0
			11	11		
3	B	8	Total	O	0	0
			8	8		

3 Residue-property plots

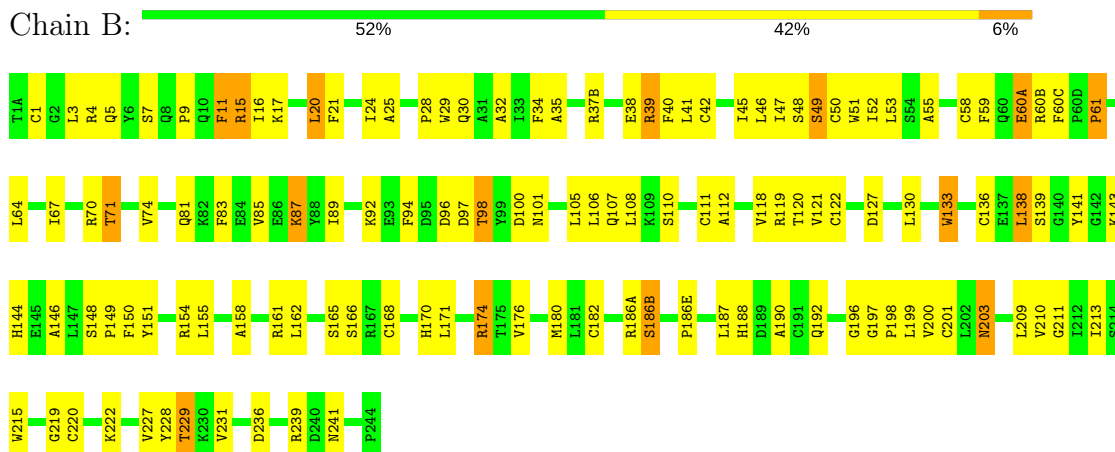
These plots are drawn for all protein, RNA and DNA chains in the entry. The first graphic for a chain summarises the proportions of the various outlier classes displayed in the second graphic. The second graphic shows the sequence view annotated by issues in geometry and electron density. Residues are color-coded according to the number of geometric quality criteria for which they contain at least one outlier: green = 0, yellow = 1, orange = 2 and red = 3 or more. A red dot above a residue indicates a poor fit to the electron density ($RSRZ > 2$). Stretches of 2 or more consecutive residues without any outlier are shown as a green connector. Residues present in the sample, but not in the model, are shown in grey.

Note EDS was not executed.

• Molecule 1: SINGLE CHAIN TISSUE TYPE PLASMINOGEN ACTIVATOR



• Molecule 1: SINGLE CHAIN TISSUE TYPE PLASMINOGEN ACTIVATOR



4 Data and refinement statistics

Xtriage (Phenix) and EDS were not executed - this section is therefore incomplete.

Property	Value	Source
Space group	P 21 21 21	Depositor
Cell constants a, b, c, α , β , γ	43.99Å 80.78Å 159.16Å 90.00° 90.00° 90.00°	Depositor
Resolution (Å)	7.00 – 3.35	Depositor
% Data completeness (in resolution range)	81.0 (7.00-3.35)	Depositor
R_{merge}	0.15	Depositor
R_{sym}	(Not available)	Depositor
Refinement program	X-PLOR 3.851	Depositor
R, R_{free}	(Not available) , (Not available)	Depositor
Estimated twinning fraction	No twinning to report.	Xtriage
Total number of atoms	4271	wwPDB-VP
Average B, all atoms (Å ²)	31.0	wwPDB-VP

5 Model quality [i](#)

5.1 Standard geometry [i](#)

Bond lengths and bond angles in the following residue types are not validated in this section:
2Z0

The Z score for a bond length (or angle) is the number of standard deviations the observed value is removed from the expected value. A bond length (or angle) with $|Z| > 5$ is considered an outlier worth inspection. RMSZ is the root-mean-square of all Z scores of the bond lengths (or angles).

Mol	Chain	Bond lengths		Bond angles	
		RMSZ	$\# Z > 5$	RMSZ	$\# Z > 5$
1	A	0.47	0/2137	0.73	1/2897 (0.0%)
1	B	0.47	0/2137	0.75	1/2897 (0.0%)
All	All	0.47	0/4274	0.74	2/5794 (0.0%)

There are no bond length outliers.

All (2) bond angle outliers are listed below:

Mol	Chain	Res	Type	Atoms	Z	Observed(°)	Ideal(°)
1	B	199	LEU	N-CA-C	-6.38	93.79	111.00
1	A	199	LEU	N-CA-C	-5.10	97.23	111.00

There are no chirality outliers.

There are no planarity outliers.

5.2 Too-close contacts [i](#)

In the following table, the Non-H and H(model) columns list the number of non-hydrogen atoms and hydrogen atoms in the chain respectively. The H(added) column lists the number of hydrogen atoms added and optimized by MolProbity. The Clashes column lists the number of clashes within the asymmetric unit, whereas Symm-Clashes lists symmetry related clashes.

Mol	Chain	Non-H	H(model)	H(added)	Clashes	Symm-Clashes
1	A	2085	0	2010	103	0
1	B	2085	0	2010	112	0
2	A	41	0	34	1	0
2	B	41	0	34	0	0
3	A	11	0	0	0	0
3	B	8	0	0	0	0
All	All	4271	0	4088	214	0

The all-atom clashscore is defined as the number of clashes found per 1000 atoms (including hydrogen atoms). The all-atom clashscore for this structure is 28.

All (214) close contacts within the same asymmetric unit are listed below, sorted by their clash magnitude.

Atom-1	Atom-2	Interatomic distance (Å)	Clash overlap (Å)
1:A:209:LEU:HG	1:A:231:VAL:HG21	1.55	0.87
1:B:9:PRO:HB2	1:B:20:LEU:HD11	1.58	0.85
1:B:158:ALA:HB1	1:B:188:HIS:HB3	1.58	0.84
1:B:209:LEU:HG	1:B:231:VAL:HG21	1.61	0.82
1:B:4:ARG:HA	1:B:119:ARG:NH2	1.95	0.82
1:A:51:TRP:HE3	1:A:105:LEU:HD22	1.44	0.80
1:B:51:TRP:HE3	1:B:105:LEU:HD22	1.46	0.80
1:A:11:PHE:HB3	1:A:21:PHE:HD2	1.45	0.80
1:B:211:GLY:HA2	1:B:231:VAL:HG23	1.66	0.78
1:B:171:LEU:O	1:B:174:ARG:HG2	1.85	0.77
1:B:45:ILE:HG12	1:B:198:PRO:HB3	1.66	0.76
1:A:9:PRO:HB2	1:A:20:LEU:HD11	1.72	0.71
1:A:128:LEU:HD11	1:A:130:LEU:HG	1.69	0.71
1:A:11:PHE:HB3	1:A:21:PHE:CD2	2.27	0.69
1:A:180:MET:HE3	1:A:227:VAL:HG11	1.73	0.69
1:B:161:ARG:HG2	1:B:161:ARG:HH11	1.56	0.69
1:B:180:MET:HE3	1:B:227:VAL:HG11	1.74	0.69
1:A:32:ALA:HB2	1:A:141:TYR:CE2	2.28	0.69
1:A:32:ALA:HB2	1:A:141:TYR:HE2	1.57	0.68
1:A:56:ALA:HB2	1:A:103:ILE:H	1.59	0.68
1:A:34:PHE:CE2	1:A:67:ILE:HD12	2.30	0.67
1:A:94:PHE:HE1	1:A:99:TYR:HA	1.60	0.67
1:B:139:SER:HB2	1:B:155:LEU:HD11	1.77	0.67
1:B:59:PHE:CZ	1:B:106:LEU:HD11	2.30	0.67
1:A:202:LEU:HD12	1:A:206:ARG:O	1.96	0.66
1:A:129:GLN:HA	1:A:129:GLN:HE21	1.60	0.66
1:B:35:ALA:HB1	1:B:60(C):PHE:CE1	2.31	0.65
1:B:34:PHE:CD2	1:B:67:ILE:HD12	2.32	0.64
1:A:176:VAL:HA	1:A:180:MET:CE	2.26	0.64
1:B:55:ALA:O	1:B:58:CYS:HB2	1.98	0.64
1:B:5:GLN:H	1:B:119:ARG:HH22	1.46	0.64
1:A:70:ARG:HG2	1:A:72:TYR:O	1.98	0.63
1:A:51:TRP:CE3	1:A:105:LEU:HD22	2.32	0.63
1:B:9:PRO:HB2	1:B:20:LEU:CD1	2.28	0.63
1:B:211:GLY:HA2	1:B:229:THR:O	1.99	0.62
1:A:139:SER:HB2	1:A:155:LEU:HD11	1.81	0.62
1:A:40:PHE:HB3	1:A:151:TYR:CD2	2.33	0.62

Continued on next page...

Continued from previous page...

Atom-1	Atom-2	Interatomic distance (Å)	Clash overlap (Å)
1:B:81:GLN:NE2	1:B:118:VAL:HG21	2.15	0.62
1:A:211:GLY:HA2	1:A:229:THR:O	1.99	0.62
1:A:25:ALA:O	1:A:28:PRO:HD3	2.01	0.61
1:B:51:TRP:CE3	1:B:105:LEU:HD22	2.30	0.61
1:B:21:PHE:CD1	1:B:154:ARG:HB3	2.35	0.61
1:B:161:ARG:NH1	1:B:161:ARG:HG2	2.13	0.61
1:A:9:PRO:HB3	1:A:21:PHE:O	2.00	0.61
1:B:16:ILE:HG22	1:B:17:LYS:N	2.16	0.61
1:B:130:LEU:HD21	1:B:203:ASN:ND2	2.15	0.61
1:A:141:TYR:HE1	1:A:155:LEU:HB2	1.67	0.60
1:A:88:TYR:HB2	1:A:106:LEU:HG	1.84	0.60
1:A:16:ILE:HG21	1:A:144:HIS:CE1	2.36	0.60
1:B:28:PRO:HG3	1:B:119:ARG:HE	1.66	0.60
1:B:48:SER:OG	1:B:51:TRP:HB2	2.02	0.59
1:A:136:CYS:HB3	1:A:200:VAL:O	2.01	0.59
1:A:16:ILE:HD11	1:A:21:PHE:CD1	2.38	0.59
1:A:95:ASP:HB3	1:A:100:ASP:HB3	1.84	0.59
1:B:174:ARG:HG3	1:B:174:ARG:HH11	1.68	0.59
1:A:34:PHE:CD2	1:A:67:ILE:HD12	2.37	0.59
1:B:21:PHE:CE1	1:B:154:ARG:HB3	2.37	0.59
1:B:168:CYS:SG	1:B:182:CYS:N	2.76	0.58
1:B:176:VAL:HA	1:B:180:MET:CE	2.34	0.58
1:B:50:CYS:HA	1:B:108:LEU:HD12	1.85	0.57
1:A:141:TYR:CE1	1:A:155:LEU:HB2	2.39	0.57
1:B:9:PRO:O	1:B:20:LEU:HD11	2.05	0.57
1:B:100:ASP:O	1:B:101:ASN:HB2	2.05	0.56
1:A:201:CYS:SG	1:A:210:VAL:HG21	2.46	0.56
1:B:211:GLY:CA	1:B:231:VAL:HG23	2.34	0.56
1:A:40:PHE:HB3	1:A:151:TYR:HD2	1.72	0.55
1:B:40:PHE:HB3	1:B:151:TYR:CD2	2.42	0.55
1:B:236:ASP:O	1:B:239:ARG:HB3	2.06	0.55
1:A:11:PHE:HB3	1:A:21:PHE:HB2	1.89	0.55
1:B:4:ARG:HA	1:B:119:ARG:CZ	2.37	0.55
1:A:29:TRP:CG	1:A:121:VAL:HG22	2.42	0.54
1:A:16:ILE:HG22	1:A:17:LYS:N	2.23	0.54
1:A:40:PHE:HE2	1:A:141:TYR:HD2	1.56	0.54
1:A:117:VAL:HG23	1:A:118:VAL:HG23	1.88	0.54
1:B:94:PHE:HA	1:B:101:ASN:HB2	1.91	0.53
1:B:110:SER:HB3	1:B:111:CYS:SG	2.48	0.53
1:B:34:PHE:CE2	1:B:67:ILE:HD12	2.44	0.53
1:A:176:VAL:HG13	1:A:180:MET:HE2	1.90	0.53

Continued on next page...

Continued from previous page...

Atom-1	Atom-2	Interatomic distance (Å)	Clash overlap (Å)
1:A:138:LEU:CD1	1:A:190:ALA:HB2	2.39	0.52
1:B:176:VAL:HA	1:B:180:MET:HE2	1.91	0.52
1:A:176:VAL:HA	1:A:180:MET:HE1	1.90	0.52
1:A:209:LEU:CG	1:A:231:VAL:HG21	2.34	0.52
1:B:40:PHE:O	1:B:151:TYR:HE2	1.93	0.52
1:B:83:PHE:HB2	1:B:108:LEU:HD22	1.90	0.52
1:B:201:CYS:SG	1:B:210:VAL:HG21	2.49	0.52
1:A:168:CYS:SG	1:A:182:CYS:N	2.83	0.52
1:A:48:SER:OG	1:A:51:TRP:HB2	2.09	0.52
1:B:136:CYS:HB3	1:B:200:VAL:O	2.11	0.51
1:A:3:LEU:HD21	1:A:206:ARG:CZ	2.40	0.51
1:A:9:PRO:HB2	1:A:20:LEU:CD1	2.40	0.51
1:B:180:MET:HE3	1:B:215:TRP:HE1	1.75	0.51
1:A:67:ILE:HG12	1:A:82:LYS:HG2	1.92	0.51
1:A:219:GLY:O	1:A:220:CYS:SG	2.69	0.51
1:B:47:ILE:HG12	1:B:51:TRP:O	2.11	0.51
1:B:81:GLN:HE21	1:B:118:VAL:HG21	1.75	0.51
1:A:29:TRP:CB	1:A:121:VAL:HG22	2.40	0.51
1:A:41:LEU:O	1:A:42:CYS:SG	2.69	0.50
1:B:47:ILE:HD13	1:B:53:LEU:HG	1.94	0.50
1:A:17:LYS:HA	1:A:186(H):ASN:HB2	1.92	0.50
1:A:86:GLU:HB3	1:A:107:GLN:O	2.11	0.50
1:B:186(A):ARG:HB2	1:B:187:LEU:CD2	2.42	0.50
1:A:182:CYS:HB3	1:A:225:PRO:HB2	1.94	0.50
1:B:149:PRO:HG2	1:B:150:PHE:CD2	2.46	0.49
1:B:40:PHE:CZ	1:B:141:TYR:HB2	2.46	0.49
1:A:16:ILE:HD11	1:A:21:PHE:CG	2.47	0.49
1:B:30:GLN:NE2	1:B:139:SER:O	2.45	0.49
1:A:219:GLY:C	1:A:220:CYS:SG	2.91	0.49
1:A:21:PHE:CE1	1:A:154:ARG:HB3	2.47	0.49
1:A:67:ILE:HG21	1:A:70:ARG:NH1	2.27	0.49
1:B:138:LEU:CD1	1:B:190:ALA:HB2	2.43	0.49
1:B:29:TRP:CG	1:B:121:VAL:HG22	2.47	0.49
1:B:89:ILE:HD12	1:B:241:ASN:HB3	1.95	0.49
1:A:174:ARG:HH21	2:A:245:2Z0:C3	2.25	0.49
1:A:86:GLU:HG2	1:A:107:GLN:NE2	2.28	0.49
1:B:16:ILE:HG21	1:B:144:HIS:CE1	2.48	0.49
1:B:143:LYS:HD3	1:B:148:SER:O	2.12	0.48
1:A:144:HIS:O	1:A:145:GLU:HB2	2.14	0.48
1:A:51:TRP:CZ3	1:A:105:LEU:HD13	2.48	0.48
1:B:130:LEU:HD21	1:B:203:ASN:HD22	1.78	0.48

Continued on next page...

Continued from previous page...

Atom-1	Atom-2	Interatomic distance (Å)	Clash overlap (Å)
1:B:149:PRO:HG2	1:B:150:PHE:CE2	2.48	0.48
1:A:67:ILE:HD13	1:A:70:ARG:NH1	2.28	0.48
1:A:24:ILE:HG22	1:A:71:THR:OG1	2.14	0.48
1:B:5:GLN:H	1:B:119:ARG:NH2	2.10	0.48
1:A:128:LEU:HD21	1:A:130:LEU:HD11	1.96	0.48
1:B:51:TRP:CZ3	1:B:105:LEU:HB3	2.49	0.47
1:A:45:ILE:HG22	1:A:121:VAL:HG21	1.95	0.47
1:B:45:ILE:HD11	1:B:197:GLY:C	2.34	0.47
1:A:101:ASN:HA	1:A:234:TYR:OH	2.14	0.47
1:B:110:SER:CB	1:B:111:CYS:SG	3.03	0.47
1:A:64:LEU:HB2	1:A:85:VAL:HG21	1.95	0.47
1:B:161:ARG:CG	1:B:161:ARG:HH11	2.24	0.47
1:B:28:PRO:HG2	1:B:29:TRP:CE3	2.49	0.47
1:B:133:TRP:HA	1:B:162:LEU:O	2.15	0.47
1:B:219:GLY:O	1:B:220:CYS:SG	2.72	0.47
1:A:70:ARG:O	1:A:141:TYR:OH	2.29	0.47
1:B:45:ILE:HG23	1:B:121:VAL:HG21	1.97	0.47
1:B:97:ASP:O	1:B:98:THR:HG23	2.15	0.47
1:A:59:PHE:CZ	1:A:106:LEU:HD11	2.49	0.46
1:B:215:TRP:CZ2	1:B:227:VAL:HG21	2.50	0.46
1:B:51:TRP:HZ3	1:B:105:LEU:HB3	1.78	0.46
1:B:64:LEU:HD23	1:B:85:VAL:HG21	1.98	0.46
1:A:167:ARG:HG2	1:A:167:ARG:HH11	1.79	0.46
1:A:217:LEU:HB2	1:A:224:VAL:HG11	1.97	0.46
1:B:32:ALA:HB2	1:B:141:TYR:CE2	2.51	0.46
1:B:49:SER:O	1:B:111:CYS:HB2	2.14	0.46
1:A:234:TYR:O	1:A:238:ILE:HG13	2.16	0.46
1:B:170:HIS:C	1:B:171:LEU:HD23	2.35	0.46
1:B:87:LYS:HE2	1:B:107:GLN:OE1	2.15	0.46
1:B:29:TRP:CB	1:B:121:VAL:HG22	2.46	0.46
1:B:49:SER:O	1:B:50:CYS:SG	2.73	0.46
1:B:52:ILE:HG13	1:B:106:LEU:HB2	1.97	0.46
1:B:16:ILE:HG12	1:B:21:PHE:CE2	2.51	0.46
1:B:41:LEU:O	1:B:42:CYS:SG	2.74	0.46
1:B:94:PHE:CZ	1:B:96:ASP:HA	2.51	0.46
1:B:133:TRP:O	1:B:161:ARG:NH1	2.48	0.45
1:B:9:PRO:HB3	1:B:21:PHE:O	2.15	0.45
1:A:176:VAL:HA	1:A:180:MET:HE2	1.96	0.45
1:A:47:ILE:HD13	1:A:53:LEU:HG	1.98	0.45
1:A:158:ALA:HB1	1:A:188:HIS:HB3	1.98	0.45
1:A:190:ALA:HB1	1:A:194:ASP:CB	2.47	0.45

Continued on next page...

Continued from previous page...

Atom-1	Atom-2	Interatomic distance (Å)	Clash overlap (Å)
1:B:3:LEU:O	1:B:29:TRP:HZ3	2.00	0.45
1:B:16:ILE:HD11	1:B:21:PHE:CD1	2.53	0.45
1:A:129:GLN:CA	1:A:129:GLN:HE21	2.29	0.44
1:B:45:ILE:CG2	1:B:121:VAL:HG21	2.48	0.44
1:B:186(A):ARG:HB2	1:B:187:LEU:HD21	1.98	0.44
1:B:11:PHE:O	1:B:20:LEU:HD12	2.16	0.44
1:B:40:PHE:O	1:B:151:TYR:CE2	2.71	0.44
1:B:83:PHE:CZ	1:B:112:ALA:HA	2.53	0.44
1:A:21:PHE:CD1	1:A:154:ARG:HB3	2.53	0.44
1:B:59:PHE:HZ	1:B:106:LEU:HD11	1.81	0.44
1:B:24:ILE:H	1:B:71:THR:HG23	1.81	0.44
1:B:34:PHE:O	1:B:64:LEU:HD12	2.17	0.44
1:A:40:PHE:O	1:A:151:TYR:HE2	2.00	0.43
1:A:16:ILE:HD11	1:A:21:PHE:CE1	2.53	0.43
1:A:133:TRP:HA	1:A:162:LEU:O	2.19	0.43
1:B:213:ILE:HG12	1:B:228:TYR:CE2	2.54	0.43
1:B:55:ALA:N	1:B:196:GLY:HA2	2.34	0.43
1:B:146:ALA:HB2	1:B:220:CYS:SG	2.59	0.43
1:A:40:PHE:CE2	1:A:141:TYR:HB2	2.54	0.43
1:A:237:TRP:CD2	1:A:241:ASN:ND2	2.87	0.43
1:A:40:PHE:CE2	1:A:141:TYR:HD2	2.36	0.43
1:B:40:PHE:HB3	1:B:151:TYR:HD2	1.81	0.43
1:A:60(D):PRO:O	1:A:63:HIS:HB2	2.19	0.43
1:A:108:LEU:HB2	1:A:111:CYS:SG	2.59	0.43
1:A:137:GLU:O	1:A:200:VAL:HG22	2.19	0.42
1:A:77:GLY:O	1:A:80:GLU:HG2	2.19	0.42
1:A:89:ILE:H	1:A:89:ILE:HD12	1.83	0.42
1:B:50:CYS:O	1:B:107:GLN:HA	2.20	0.42
1:B:89:ILE:HG21	1:B:241:ASN:OD1	2.20	0.42
1:A:128:LEU:HD12	1:A:129:GLN:H	1.85	0.42
1:B:35:ALA:HB3	1:B:39:ARG:HD3	2.01	0.42
1:A:46:LEU:HG	1:A:120:THR:HG22	2.02	0.42
1:A:29:TRP:HB2	1:A:121:VAL:HG22	2.01	0.42
1:A:49:SER:O	1:A:111:CYS:HB2	2.19	0.42
1:B:15:ARG:HH22	1:B:186(A):ARG:NH2	2.18	0.42
1:A:205:GLY:O	1:A:206:ARG:HD3	2.19	0.41
1:A:67:ILE:HD13	1:A:70:ARG:HH12	1.85	0.41
1:A:34:PHE:HE2	1:A:67:ILE:HD12	1.80	0.41
1:B:9:PRO:HB2	1:B:20:LEU:CG	2.50	0.41
1:B:52:ILE:CG1	1:B:106:LEU:HB2	2.50	0.41
1:A:60(D):PRO:HD2	1:A:63:HIS:CB	2.50	0.41

Continued on next page...

Continued from previous page...

Atom-1	Atom-2	Interatomic distance (Å)	Clash overlap (Å)
1:A:102:ASP:O	1:A:229:THR:HG21	2.21	0.41
1:A:157:GLU:OE2	1:A:159:HIS:NE2	2.50	0.41
1:B:25:ALA:O	1:B:28:PRO:HD3	2.21	0.41
1:A:75:VAL:HG21	1:B:74:VAL:HB	2.03	0.41
1:B:46:LEU:HG	1:B:120:THR:HG22	2.03	0.41
1:A:70:ARG:HD2	1:A:80:GLU:OE1	2.21	0.40
1:B:60(A):GLU:O	1:B:60(B):ARG:HB2	2.21	0.40
1:A:130:LEU:HA	1:A:131:PRO:HD3	1.85	0.40
1:A:89:ILE:N	1:A:89:ILE:HD12	2.37	0.40
1:B:1:CYS:C	1:B:122:CYS:SG	3.00	0.40
1:B:192:GLN:N	1:B:192:GLN:OE1	2.52	0.40
1:B:48:SER:O	1:B:50:CYS:N	2.54	0.40
1:A:56:ALA:N	1:A:102:ASP:OD1	2.54	0.40

There are no symmetry-related clashes.

5.3 Torsion angles [i](#)

5.3.1 Protein backbone [i](#)

In the following table, the Percentiles column shows the percent Ramachandran outliers of the chain as a percentile score with respect to all X-ray entries followed by that with respect to entries of similar resolution.

The Analysed column shows the number of residues for which the backbone conformation was analysed, and the total number of residues.

Mol	Chain	Analysed	Favoured	Allowed	Outliers	Percentiles	
1	A	263/265 (99%)	213 (81%)	44 (17%)	6 (2%)	7	38
1	B	263/265 (99%)	218 (83%)	37 (14%)	8 (3%)	5	33
All	All	526/530 (99%)	431 (82%)	81 (15%)	14 (3%)	6	34

All (14) Ramachandran outliers are listed below:

Mol	Chain	Res	Type
1	A	11	PHE
1	A	186(E)	PRO
1	B	186(E)	PRO
1	A	186(B)	SER
1	B	49	SER

Continued on next page...

Continued from previous page...

Mol	Chain	Res	Type
1	B	186(B)	SER
1	A	133	TRP
1	A	146	ALA
1	A	186(F)	GLN
1	B	133	TRP
1	B	174	ARG
1	B	92	LYS
1	B	60(A)	GLU
1	B	61	PRO

5.3.2 Protein sidechains ⓘ

In the following table, the Percentiles column shows the percent sidechain outliers of the chain as a percentile score with respect to all X-ray entries followed by that with respect to entries of similar resolution.

The Analysed column shows the number of residues for which the sidechain conformation was analysed, and the total number of residues.

Mol	Chain	Analysed	Rotameric	Outliers	Percentiles	
1	A	228/228 (100%)	209 (92%)	19 (8%)	13	44
1	B	228/228 (100%)	208 (91%)	20 (9%)	12	40
All	All	456/456 (100%)	417 (91%)	39 (9%)	12	42

All (39) residues with a non-rotameric sidechain are listed below:

Mol	Chain	Res	Type
1	A	1(A)	THR
1	A	5	GLN
1	A	11	PHE
1	A	15	ARG
1	A	20	LEU
1	A	39	ARG
1	A	62	HIS
1	A	63	HIS
1	A	70	ARG
1	A	87	LYS
1	A	110(C)	SER
1	A	121	VAL
1	A	123	LEU
1	A	129	GLN

Continued on next page...

Continued from previous page...

Mol	Chain	Res	Type
1	A	138	LEU
1	A	198	PRO
1	A	229	THR
1	A	235	LEU
1	A	236	ASP
1	B	7	SER
1	B	11	PHE
1	B	15	ARG
1	B	20	LEU
1	B	37(B)	ARG
1	B	38	GLU
1	B	39	ARG
1	B	61	PRO
1	B	70	ARG
1	B	71	THR
1	B	87	LYS
1	B	98	THR
1	B	127	ASP
1	B	138	LEU
1	B	165	SER
1	B	166	SER
1	B	186(B)	SER
1	B	203	ASN
1	B	222	LYS
1	B	229	THR

Some sidechains can be flipped to improve hydrogen bonding and reduce clashes. All (4) such sidechains are listed below:

Mol	Chain	Res	Type
1	A	107	GLN
1	A	129	GLN
1	B	144	HIS
1	B	203	ASN

5.3.3 RNA ⓘ

There are no RNA molecules in this entry.

5.4 Non-standard residues in protein, DNA, RNA chains [i](#)

There are no non-standard protein/DNA/RNA residues in this entry.

5.5 Carbohydrates [i](#)

There are no carbohydrates in this entry.

5.6 Ligand geometry [i](#)

2 ligands are modelled in this entry.

In the following table, the Counts columns list the number of bonds (or angles) for which Mogul statistics could be retrieved, the number of bonds (or angles) that are observed in the model and the number of bonds (or angles) that are defined in the chemical component dictionary. The Link column lists molecule types, if any, to which the group is linked. The Z score for a bond length (or angle) is the number of standard deviations the observed value is removed from the expected value. A bond length (or angle) with $|Z| > 2$ is considered an outlier worth inspection. RMSZ is the root-mean-square of all Z scores of the bond lengths (or angles).

Mol	Type	Chain	Res	Link	Bond lengths			Bond angles		
					Counts	RMSZ	$\# Z > 2$	Counts	RMSZ	$\# Z > 2$
2	2Z0	A	245	1	38,42,43	3.48	6 (15%)	49,58,59	3.41	12 (24%)
2	2Z0	B	245	1	38,42,43	4.26	6 (15%)	49,58,59	4.32	11 (22%)

In the following table, the Chirals column lists the number of chiral outliers, the number of chiral centers analysed, the number of these observed in the model and the number defined in the chemical component dictionary. Similar counts are reported in the Torsion and Rings columns. '-' means no outliers of that kind were identified.

Mol	Type	Chain	Res	Link	Chirals	Torsions	Rings
2	2Z0	A	245	1	-	0/42/44/46	0/2/2/2
2	2Z0	B	245	1	-	0/42/44/46	0/2/2/2

All (12) bond length outliers are listed below:

Mol	Chain	Res	Type	Atoms	Z	Observed(Å)	Ideal(Å)
2	B	245	2Z0	C2-S	-6.65	1.66	1.76
2	A	245	2Z0	C2-S	-4.83	1.69	1.76
2	A	245	2Z0	S-N1	3.08	1.66	1.61
2	B	245	2Z0	S-N1	3.28	1.67	1.61
2	A	245	2Z0	CE-CC	3.45	1.58	1.49
2	B	245	2Z0	CE-CC	3.75	1.59	1.49

Continued on next page...

Continued from previous page...

Mol	Chain	Res	Type	Atoms	Z	Observed(Å)	Ideal(Å)
2	A	245	2Z0	O2-CC	9.05	1.45	1.21
2	B	245	2Z0	O2-CC	9.72	1.46	1.21
2	A	245	2Z0	O1S-S	12.08	1.56	1.43
2	A	245	2Z0	O2S-S	12.94	1.57	1.43
2	B	245	2Z0	O2S-S	14.73	1.59	1.43
2	B	245	2Z0	O1S-S	16.96	1.61	1.43

All (23) bond angle outliers are listed below:

Mol	Chain	Res	Type	Atoms	Z	Observed(°)	Ideal(°)
2	B	245	2Z0	C1-C2-S	-14.15	108.75	120.10
2	A	245	2Z0	C1-C2-S	-13.60	109.19	120.10
2	B	245	2Z0	O1S-S-N1	-11.79	85.32	106.88
2	B	245	2Z0	CA-N1-S	-7.32	106.89	121.29
2	B	245	2Z0	O2S-S-O1S	-6.54	111.19	119.55
2	A	245	2Z0	CA-N1-S	-6.35	108.80	121.29
2	B	245	2Z0	C6-C5-N	-5.69	112.94	121.70
2	B	245	2Z0	C2-S-N1	-5.46	100.19	107.76
2	A	245	2Z0	O2S-S-O1S	-5.37	112.68	119.55
2	A	245	2Z0	C2-S-N1	-5.06	100.73	107.76
2	A	245	2Z0	O1S-S-N1	-4.90	97.92	106.88
2	A	245	2Z0	C6-C5-N	-4.64	114.56	121.70
2	A	245	2Z0	O2-CC-CE	-3.34	114.95	121.09
2	B	245	2Z0	O2-CC-CE	-2.28	116.89	121.09
2	A	245	2Z0	O2S-S-C2	2.03	110.46	107.95
2	A	245	2Z0	CM1-N-C5	2.14	120.34	114.01
2	B	245	2Z0	CM2-N-CM1	2.58	124.39	116.03
2	B	245	2Z0	C4A-C5-N	5.30	125.74	118.17
2	A	245	2Z0	C4A-C5-N	5.44	125.94	118.17
2	B	245	2Z0	C3-C2-S	8.76	129.45	119.77
2	A	245	2Z0	C3-C2-S	9.10	129.83	119.77
2	A	245	2Z0	O2S-S-N1	9.51	124.28	106.88
2	B	245	2Z0	O2S-S-N1	16.70	137.43	106.88

There are no chirality outliers.

There are no torsion outliers.

There are no ring outliers.

1 monomer is involved in 1 short contact:

Mol	Chain	Res	Type	Clashes	Symm-Clashes
2	A	245	2Z0	1	0

5.7 Other polymers [i](#)

There are no such residues in this entry.

5.8 Polymer linkage issues [i](#)

There are no chain breaks in this entry.

6 Fit of model and data

6.1 Protein, DNA and RNA chains

EDS was not executed - this section is therefore empty.

6.2 Non-standard residues in protein, DNA, RNA chains

EDS was not executed - this section is therefore empty.

6.3 Carbohydrates

EDS was not executed - this section is therefore empty.

6.4 Ligands

EDS was not executed - this section is therefore empty.

6.5 Other polymers

EDS was not executed - this section is therefore empty.