



# Full wwPDB X-ray Structure Validation Report ⓘ

Feb 13, 2017 – 11:21 am GMT

PDB ID : 4BH4  
Title : Haemagglutinin from a Transmissible Mutant H5 Influenza Virus in Complex with Avian Receptor Analogue 3'-SLN  
Authors : Xiong, X.; Coombs, P.J.; Martin, S.R.; Liu, J.; Xiao, H.; McCauley, J.W.; Locher, K.; Walker, P.A.; Collins, P.J.; Kawaoka, Y.; Skehel, J.J.; Gamblin, S.J.  
Deposited on : 2013-03-29  
Resolution : 1.90 Å(reported)

This is a Full wwPDB X-ray Structure Validation Report for a publicly released PDB entry.

We welcome your comments at [validation@mail.wwpdb.org](mailto:validation@mail.wwpdb.org)

A user guide is available at

<http://wwpdb.org/validation/2016/XrayValidationReportHelp>

with specific help available everywhere you see the ⓘ symbol.

---

The following versions of software and data (see [references ⓘ](#)) were used in the production of this report:

MolProbity	:	4.02b-467
Mogul	:	1.7.2 (RC1), CSD as538be (2017)
Xtriage (Phenix)	:	1.9-1692
EDS	:	trunk28620
Percentile statistics	:	20161228.v01 (using entries in the PDB archive December 28th 2016)
Refmac	:	5.8.0135
CCP4	:	6.5.0
Ideal geometry (proteins)	:	Engh & Huber (2001)
Ideal geometry (DNA, RNA)	:	Parkinson et al. (1996)
Validation Pipeline (wwPDB-VP)	:	recalc28949

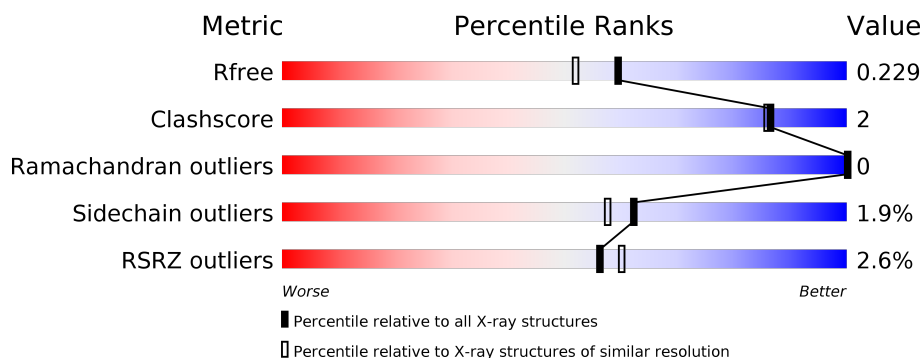
# 1 Overall quality at a glance

The following experimental techniques were used to determine the structure:

*X-RAY DIFFRACTION*

The reported resolution of this entry is 1.90 Å.

Percentile scores (ranging between 0-100) for global validation metrics of the entry are shown in the following graphic. The table shows the number of entries on which the scores are based.



Metric	Whole archive (#Entries)	Similar resolution (#Entries, resolution range(Å))
$R_{free}$	100719	5047 (1.90-1.90)
Clashscore	112137	5731 (1.90-1.90)
Ramachandran outliers	110173	5669 (1.90-1.90)
Sidechain outliers	110143	5670 (1.90-1.90)
RSRZ outliers	101464	5100 (1.90-1.90)

The table below summarises the geometric issues observed across the polymeric chains and their fit to the electron density. The red, orange, yellow and green segments on the lower bar indicate the fraction of residues that contain outliers for  $\geq 3$ , 2, 1 and 0 types of geometric quality criteria. A grey segment represents the fraction of residues that are not modelled. The numeric value for each fraction is indicated below the corresponding segment, with a dot representing fractions  $\leq 5\%$ . The upper red bar (where present) indicates the fraction of residues that have poor fit to the electron density. The numeric value is given above the bar.

Mol	Chain	Length	Quality of chain
1	A	328	
2	B	167	

The following table lists non-polymeric compounds, carbohydrate monomers and non-standard residues in protein, DNA, RNA chains that are outliers for geometric or electron-density-fit criteria:

Mol	Type	Chain	Res	Chirality	Geometry	Clashes	Electron density
4	FUC	A	1330	X	-	-	-
6	EPE	B	1168	-	-	-	X

## 2 Entry composition

There are 7 unique types of molecules in this entry. The entry contains 4480 atoms, of which 0 are hydrogens and 0 are deuteriums.

In the tables below, the ZeroOcc column contains the number of atoms modelled with zero occupancy, the AltConf column contains the number of residues with at least one atom in alternate conformation and the Trace column contains the number of residues modelled with at most 2 atoms.

- Molecule 1 is a protein called HEMAGGLUTININ.

Mol	Chain	Residues	Atoms					ZeroOcc	AltConf	Trace
1	A	324	Total	C	N	O	S	0	1	0
			2578	1633	444	486	15			

There are 7 discrepancies between the modelled and reference sequences:

Chain	Residue	Modelled	Actual	Comment	Reference
A	-1	ASP	-	EXPRESSION TAG	UNP Q5EP31
A	0	PRO	-	EXPRESSION TAG	UNP Q5EP31
A	154	ASP	ASN	CONFLICT	UNP Q5EP31
A	220	LYS	ASN	CONFLICT	UNP Q5EP31
A	222	LEU	GLN	CONFLICT	UNP Q5EP31
A	315	ILE	THR	CONFLICT	UNP Q5EP31
A	325	THR	ARG	CONFLICT	UNP Q5EP31

- Molecule 2 is a protein called HEMAGGLUTININ.

Mol	Chain	Residues	Atoms					ZeroOcc	AltConf	Trace
2	B	167	Total	C	N	O	S	0	0	0
			1345	837	231	269	8			

- Molecule 3 is SUGAR (N-ACETYL-D-GLUCOSAMINE) (three-letter code: NAG) (formula:  $C_8H_{15}NO_6$ ).



Mol	Chain	Residues	Atoms				ZeroOcc	AltConf
3	A	1	Total	C	N	O	0	0
			14	8	1	5		
3	A	1	Total	C	N	O	0	0
			14	8	1	5		

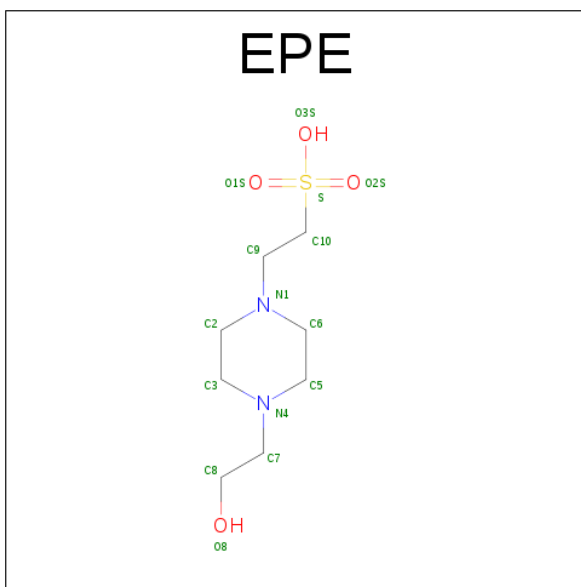
- Molecule 4 is a polymer of unknown type called SUGAR (6-MER).

Mol	Chain	Residues	Atoms				ZeroOcc	AltConf
4	A	6	Total	C	N	O	0	0
			71	40	2	29		

- Molecule 5 is a polymer of unknown type called SUGAR (3-MER).

Mol	Chain	Residues	Atoms				ZeroOcc	AltConf
5	A	3	Total	C	N	O	0	0
			46	25	2	19		

- Molecule 6 is 4-(2-HYDROXYETHYL)-1-PIPERAZINE ETHANESULFONIC ACID (three-letter code: EPE) (formula: C<sub>8</sub>H<sub>18</sub>N<sub>2</sub>O<sub>4</sub>S).



Mol	Chain	Residues	Atoms					ZeroOcc	AltConf
6	B	1	Total	C	N	O	S	0	0
			15	8	2	4	1		

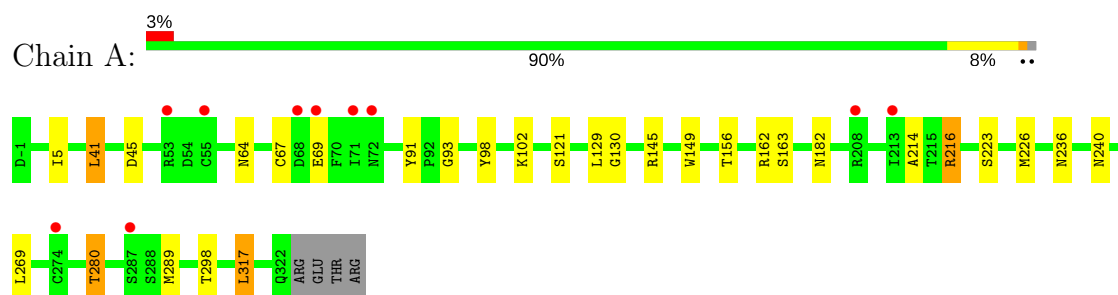
- Molecule 7 is water.

Mol	Chain	Residues	Atoms		ZeroOcc	AltConf
7	A	248	Total	O	0	0
			248	248		
7	B	149	Total	O	0	0
			149	149		

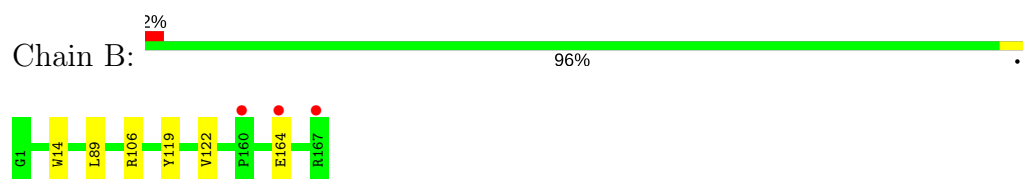
### 3 Residue-property plots [i](#)

These plots are drawn for all protein, RNA and DNA chains in the entry. The first graphic for a chain summarises the proportions of the various outlier classes displayed in the second graphic. The second graphic shows the sequence view annotated by issues in geometry and electron density. Residues are color-coded according to the number of geometric quality criteria for which they contain at least one outlier: green = 0, yellow = 1, orange = 2 and red = 3 or more. A red dot above a residue indicates a poor fit to the electron density ( $RSRZ > 2$ ). Stretches of 2 or more consecutive residues without any outlier are shown as a green connector. Residues present in the sample, but not in the model, are shown in grey.

#### • Molecule 1: HEMAGGLUTININ



#### • Molecule 2: HEMAGGLUTININ



## 4 Data and refinement statistics

Property	Value	Source
Space group	H 3 2	Depositor
Cell constants a, b, c, $\alpha$ , $\beta$ , $\gamma$	101.74Å 101.74Å 329.93Å 90.00° 90.00° 120.00°	Depositor
Resolution (Å)	77.84 – 1.90 77.72 – 1.90	Depositor EDS
% Data completeness (in resolution range)	100.0 (77.84-1.90) 100.0 (77.72-1.90)	Depositor EDS
$R_{merge}$	0.06	Depositor
$R_{sym}$	(Not available)	Depositor
$\langle I/\sigma(I) \rangle$ <sup>1</sup>	2.07 (at 1.90Å)	Xtriage
Refinement program	REFMAC 5.7.0032	Depositor
R, $R_{free}$	0.189 , 0.223 0.194 , 0.229	Depositor DCC
$R_{free}$ test set	2669 reflections (5.38%)	DCC
Wilson B-factor (Å <sup>2</sup> )	31.7	Xtriage
Anisotropy	0.451	Xtriage
Bulk solvent $k_{sol}$ (e/Å <sup>3</sup> ), $B_{sol}$ (Å <sup>2</sup> )	0.33 , 41.7	EDS
L-test for twinning <sup>2</sup>	$\langle  L  \rangle = 0.48$ , $\langle L^2 \rangle = 0.31$	Xtriage
Estimated twinning fraction	No twinning to report.	Xtriage
$F_o, F_c$ correlation	0.96	EDS
Total number of atoms	4480	wwPDB-VP
Average B, all atoms (Å <sup>2</sup> )	39.0	wwPDB-VP

Xtriage's analysis on translational NCS is as follows: *The largest off-origin peak in the Patterson function is 4.10% of the height of the origin peak. No significant pseudotranslation is detected.*

<sup>1</sup>Intensities estimated from amplitudes.

<sup>2</sup>Theoretical values of  $\langle |L| \rangle$ ,  $\langle L^2 \rangle$  for acentric reflections are 0.5, 0.333 respectively for untwinned datasets, and 0.375, 0.2 for perfectly twinned datasets.



## 5 Model quality [i](#)

### 5.1 Standard geometry [i](#)

Bond lengths and bond angles in the following residue types are not validated in this section: BMA, NAG, SIA, GAL, FUC, EPE, MAN

The Z score for a bond length (or angle) is the number of standard deviations the observed value is removed from the expected value. A bond length (or angle) with  $|Z| > 5$  is considered an outlier worth inspection. RMSZ is the root-mean-square of all Z scores of the bond lengths (or angles).

Mol	Chain	Bond lengths		Bond angles	
		RMSZ	$\# Z  > 5$	RMSZ	$\# Z  > 5$
1	A	0.35	0/2644	0.60	0/3590
2	B	0.37	0/1372	0.56	0/1846
All	All	0.35	0/4016	0.59	0/5436

Chiral center outliers are detected by calculating the chiral volume of a chiral center and verifying if the center is modelled as a planar moiety or with the opposite hand. A planarity outlier is detected by checking planarity of atoms in a peptide group, atoms in a mainchain group or atoms of a sidechain that are expected to be planar.

Mol	Chain	#Chirality outliers	#Planarity outliers
1	A	0	1
4	A	1	0
All	All	1	1

There are no bond length outliers.

There are no bond angle outliers.

All (1) chirality outliers are listed below:

Mol	Chain	Res	Type	Atom
4	A	1330	FUC	C1

All (1) planarity outliers are listed below:

Mol	Chain	Res	Type	Group
1	A	45	ASP	Peptide

## 5.2 Too-close contacts ⓘ

In the following table, the Non-H and H(model) columns list the number of non-hydrogen atoms and hydrogen atoms in the chain respectively. The H(added) column lists the number of hydrogen atoms added and optimized by MolProbity. The Clashes column lists the number of clashes within the asymmetric unit, whereas Symm-Clashes lists symmetry related clashes.

Mol	Chain	Non-H	H(model)	H(added)	Clashes	Symm-Clashes
1	A	2578	0	2533	17	0
2	B	1345	0	1242	4	0
3	A	28	0	26	0	0
4	A	71	0	61	1	0
5	A	46	0	40	1	0
6	B	15	0	18	1	0
7	A	248	0	0	1	0
7	B	149	0	0	1	0
All	All	4480	0	3920	20	0

The all-atom clashscore is defined as the number of clashes found per 1000 atoms (including hydrogen atoms). The all-atom clashscore for this structure is 2.

All (20) close contacts within the same asymmetric unit are listed below, sorted by their clash magnitude.

Atom-1	Atom-2	Interatomic distance (Å)	Clash overlap (Å)
1:A:289:MET:SD	7:A:2212:HOH:O	2.36	0.82
2:B:14:TRP:NE1	6:B:1168:EPE:O2S	2.29	0.65
1:A:98:TYR:CZ	1:A:102:LYS:HD2	2.39	0.58
1:A:5:ILE:HD11	2:B:122:VAL:HG21	1.86	0.56
2:B:106:ARG:NH2	7:B:2122:HOH:O	2.39	0.56
1:A:317:LEU:N	1:A:317:LEU:HD23	2.21	0.55
1:A:41:LEU:HD22	1:A:269:LEU:HB2	1.93	0.50
1:A:93:GLY:HA3	1:A:226:MET:O	2.12	0.49
4:A:1326:NAG:H5	4:A:1330:FUC:H61	1.95	0.49
1:A:129:LEU:O	5:A:1331:SIA:H113	2.15	0.47
1:A:163:SER:OG	1:A:240:ASN:ND2	2.44	0.47
1:A:280:THR:HG22	1:A:298:THR:HG22	1.99	0.44
1:A:130:GLY:HA3	1:A:149:TRP:HB3	1.99	0.44
1:A:69:GLU:OE1	1:A:145:ARG:NH2	2.51	0.43
1:A:214:ALA:HB3	1:A:216:ARG:HD3	2.01	0.43
1:A:91:TYR:CD1	1:A:226:MET:HG2	2.55	0.42
1:A:5:ILE:HG13	2:B:119:TYR:HA	2.03	0.41
1:A:121:SER:O	1:A:162:ARG:NH2	2.54	0.41
1:A:64:ASN:O	1:A:67:CYS:HB2	2.22	0.40

*Continued on next page...*

*Continued from previous page...*

Atom-1	Atom-2	Interatomic distance (Å)	Clash overlap (Å)
1:A:182:ASN:OD1	1:A:223:SER:C	2.60	0.40

There are no symmetry-related clashes.

## 5.3 Torsion angles [i](#)

### 5.3.1 Protein backbone [i](#)

In the following table, the Percentiles column shows the percent Ramachandran outliers of the chain as a percentile score with respect to all X-ray entries followed by that with respect to entries of similar resolution.

The Analysed column shows the number of residues for which the backbone conformation was analysed, and the total number of residues.

Mol	Chain	Analysed	Favoured	Allowed	Outliers	Percentiles	
1	A	323/328 (98%)	312 (97%)	11 (3%)	0	100	100
2	B	165/167 (99%)	161 (98%)	4 (2%)	0	100	100
All	All	488/495 (99%)	473 (97%)	15 (3%)	0	100	100

There are no Ramachandran outliers to report.

### 5.3.2 Protein sidechains [i](#)

In the following table, the Percentiles column shows the percent sidechain outliers of the chain as a percentile score with respect to all X-ray entries followed by that with respect to entries of similar resolution.

The Analysed column shows the number of residues for which the sidechain conformation was analysed, and the total number of residues.

Mol	Chain	Analysed	Rotameric	Outliers	Percentiles	
1	A	292/296 (99%)	286 (98%)	6 (2%)	59	53
2	B	141/142 (99%)	139 (99%)	2 (1%)	71	69
All	All	433/438 (99%)	425 (98%)	8 (2%)	62	60

All (8) residues with a non-rotameric sidechain are listed below:

Mol	Chain	Res	Type
1	A	41	LEU
1	A	156	THR
1	A	216	ARG
1	A	236	ASN
1	A	280	THR
1	A	317	LEU
2	B	89	LEU
2	B	164	GLU

Some sidechains can be flipped to improve hydrogen bonding and reduce clashes. All (3) such sidechains are listed below:

Mol	Chain	Res	Type
1	A	192	GLN
1	A	240	ASN
2	B	42	GLN

### 5.3.3 RNA ⓘ

There are no RNA molecules in this entry.

## 5.4 Non-standard residues in protein, DNA, RNA chains ⓘ

There are no non-standard protein/DNA/RNA residues in this entry.

## 5.5 Carbohydrates ⓘ

9 carbohydrates are modelled in this entry.

In the following table, the Counts columns list the number of bonds (or angles) for which Mogul statistics could be retrieved, the number of bonds (or angles) that are observed in the model and the number of bonds (or angles) that are defined in the chemical component dictionary. The Link column lists molecule types, if any, to which the group is linked. The Z score for a bond length (or angle) is the number of standard deviations the observed value is removed from the expected value. A bond length (or angle) with  $|Z| > 2$  is considered an outlier worth inspection. RMSZ is the root-mean-square of all Z scores of the bond lengths (or angles).

Mol	Type	Chain	Res	Link	Bond lengths			Bond angles		
					Counts	RMSZ	$\# Z  > 2$	Counts	RMSZ	$\# Z  > 2$
4	NAG	A	1325	1,4	14,14,15	0.57	0	15,19,21	1.44	3 (20%)
4	NAG	A	1326	4	14,14,15	0.43	0	15,19,21	1.32	2 (13%)
4	BMA	A	1327	4	11,11,12	0.60	0	13,15,17	2.16	3 (23%)

Mol	Type	Chain	Res	Link	Bond lengths			Bond angles		
					Counts	RMSZ	# Z  > 2	Counts	RMSZ	# Z  > 2
4	BMA	A	1328	4	11,11,12	0.51	0	13,15,17	1.54	3 (23%)
4	MAN	A	1329	4	11,11,12	0.52	0	13,15,17	1.25	1 (7%)
4	FUC	A	1330	4	9,10,11	0.61	0	13,14,16	1.31	1 (7%)
5	SIA	A	1331	5	17,20,21	0.37	0	19,28,31	0.93	2 (10%)
5	GAL	A	1332	5	11,11,12	0.20	0	13,15,17	0.65	0
5	NAG	A	1333	5	15,15,15	0.43	0	21,21,21	1.46	3 (14%)

In the following table, the Chirals column lists the number of chiral outliers, the number of chiral centers analysed, the number of these observed in the model and the number defined in the chemical component dictionary. Similar counts are reported in the Torsion and Rings columns. '-' means no outliers of that kind were identified.

Mol	Type	Chain	Res	Link	Chirals	Torsions	Rings
4	NAG	A	1325	1,4	-	0/6/23/26	0/1/1/1
4	NAG	A	1326	4	-	0/6/23/26	0/1/1/1
4	BMA	A	1327	4	-	0/2/19/22	0/1/1/1
4	BMA	A	1328	4	-	0/2/19/22	0/1/1/1
4	MAN	A	1329	4	-	0/2/19/22	0/1/1/1
4	FUC	A	1330	4	1/1/4/5	0/0/17/20	0/1/1/1
5	SIA	A	1331	5	-	0/14/34/38	0/1/1/1
5	GAL	A	1332	5	-	0/2/19/22	0/1/1/1
5	NAG	A	1333	5	-	0/6/26/26	0/1/1/1

There are no bond length outliers.

All (18) bond angle outliers are listed below:

Mol	Chain	Res	Type	Atoms	Z	Observed(°)	Ideal(°)
5	A	1333	NAG	C1-C2-N2	-3.91	106.20	110.73
5	A	1333	NAG	C3-C2-N2	-2.58	105.66	110.61
4	A	1327	BMA	O3-C3-C4	-2.34	105.26	110.36
4	A	1328	BMA	O5-C1-C2	-2.28	107.22	110.79
4	A	1327	BMA	C2-C3-C4	-2.13	107.16	110.88
5	A	1331	SIA	C4-C5-N5	-2.07	106.14	110.40
4	A	1328	BMA	C1-O5-C5	-2.07	109.32	112.17
5	A	1331	SIA	C6-C5-N5	-2.03	107.43	111.00
4	A	1326	NAG	C3-C4-C5	2.01	113.76	110.22
4	A	1325	NAG	C1-O5-C5	2.33	115.37	112.17
4	A	1326	NAG	C2-N2-C7	2.35	126.37	122.94
5	A	1333	NAG	C4-C3-C2	2.44	113.95	110.33
4	A	1325	NAG	C2-N2-C7	2.74	126.94	122.94
4	A	1325	NAG	C8-C7-N2	2.75	121.07	116.11

*Continued on next page...*

Continued from previous page...

Mol	Chain	Res	Type	Atoms	Z	Observed(°)	Ideal(°)
4	A	1328	BMA	C3-C4-C5	2.90	115.33	110.22
4	A	1330	FUC	C1-O5-C5	3.45	120.02	112.39
4	A	1329	MAN	C1-O5-C5	3.50	116.98	112.17
4	A	1327	BMA	O3-C3-C2	6.11	121.14	110.02

All (1) chirality outliers are listed below:

Mol	Chain	Res	Type	Atom
4	A	1330	FUC	C1

There are no torsion outliers.

There are no ring outliers.

3 monomers are involved in 2 short contacts:

Mol	Chain	Res	Type	Clashes	Symm-Clashes
4	A	1326	NAG	1	0
4	A	1330	FUC	1	0
5	A	1331	SIA	1	0

## 5.6 Ligand geometry

3 ligands are modelled in this entry.

In the following table, the Counts columns list the number of bonds (or angles) for which Mogul statistics could be retrieved, the number of bonds (or angles) that are observed in the model and the number of bonds (or angles) that are defined in the chemical component dictionary. The Link column lists molecule types, if any, to which the group is linked. The Z score for a bond length (or angle) is the number of standard deviations the observed value is removed from the expected value. A bond length (or angle) with  $|Z| > 2$  is considered an outlier worth inspection. RMSZ is the root-mean-square of all Z scores of the bond lengths (or angles).

Mol	Type	Chain	Res	Link	Bond lengths			Bond angles		
					Counts	RMSZ	$\# Z  > 2$	Counts	RMSZ	$\# Z  > 2$
3	NAG	A	1323	1	14,14,15	0.37	0	15,19,21	1.12	1 (6%)
3	NAG	A	1324	1	14,14,15	0.41	0	15,19,21	2.06	3 (20%)
6	EPE	B	1168	-	15,15,15	2.11	1 (6%)	18,20,20	2.87	10 (55%)

In the following table, the Chirals column lists the number of chiral outliers, the number of chiral centers analysed, the number of these observed in the model and the number defined in the chemical component dictionary. Similar counts are reported in the Torsion and Rings columns. '-' means no outliers of that kind were identified.

Mol	Type	Chain	Res	Link	Chirals	Torsions	Rings
3	NAG	A	1323	1	-	0/6/23/26	0/1/1/1
3	NAG	A	1324	1	-	0/6/23/26	0/1/1/1
6	EPE	B	1168	-	-	0/9/19/19	0/1/1/1

All (1) bond length outliers are listed below:

Mol	Chain	Res	Type	Atoms	Z	Observed(Å)	Ideal(Å)
6	B	1168	EPE	C10-S	-7.85	1.65	1.77

All (14) bond angle outliers are listed below:

Mol	Chain	Res	Type	Atoms	Z	Observed(°)	Ideal(°)
6	B	1168	EPE	C6-C5-N4	-4.32	101.89	110.63
3	A	1324	NAG	C6-C5-C4	-2.31	107.59	113.00
3	A	1324	NAG	C4-C3-C2	-2.30	107.65	111.02
6	B	1168	EPE	C5-C6-N1	-2.16	106.27	110.63
3	A	1323	NAG	C8-C7-N2	2.07	119.84	116.11
6	B	1168	EPE	O3S-S-C10	2.09	108.63	106.06
6	B	1168	EPE	C5-N4-C3	3.15	116.00	108.87
6	B	1168	EPE	C9-N1-C6	3.31	119.75	111.26
6	B	1168	EPE	C9-N1-C2	3.54	120.34	111.26
6	B	1168	EPE	C7-N4-C3	3.77	120.93	111.26
6	B	1168	EPE	C7-N4-C5	4.60	123.06	111.26
6	B	1168	EPE	C6-N1-C2	4.87	119.90	108.87
6	B	1168	EPE	O1S-S-C10	4.95	111.04	106.79
3	A	1324	NAG	C1-O5-C5	6.71	121.42	112.17

There are no chirality outliers.

There are no torsion outliers.

There are no ring outliers.

1 monomer is involved in 1 short contact:

Mol	Chain	Res	Type	Clashes	Symm-Clashes
6	B	1168	EPE	1	0

## 5.7 Other polymers

There are no such residues in this entry.

## 5.8 Polymer linkage issues ⓘ

There are no chain breaks in this entry.



## 6 Fit of model and data [i](#)

### 6.1 Protein, DNA and RNA chains [i](#)

In the following table, the column labelled ‘#RSRZ > 2’ contains the number (and percentage) of RSRZ outliers, followed by percent RSRZ outliers for the chain as percentile scores relative to all X-ray entries and entries of similar resolution. The OWAB column contains the minimum, median, 95<sup>th</sup> percentile and maximum values of the occupancy-weighted average B-factor per residue. The column labelled ‘Q < 0.9’ lists the number of (and percentage) of residues with an average occupancy less than 0.9.

Mol	Chain	Analysed	<RSRZ>	#RSRZ>2	OWAB(Å <sup>2</sup> )	Q<0.9
1	A	324/328 (98%)	0.08	10 (3%) 49 53	24, 38, 58, 78	0
2	B	167/167 (100%)	-0.20	3 (1%) 69 72	21, 32, 55, 80	0
All	All	491/495 (99%)	-0.02	13 (2%) 56 60	21, 36, 58, 80	0

All (13) RSRZ outliers are listed below:

Mol	Chain	Res	Type	RSRZ
1	A	208[A]	ARG	2.9
2	B	164	GLU	2.8
1	A	53	ARG	2.7
1	A	69	GLU	2.7
1	A	72	ASN	2.6
2	B	167	ARG	2.6
1	A	68	ASP	2.5
1	A	71	ILE	2.3
1	A	287	SER	2.2
1	A	274	CYS	2.1
2	B	160	PRO	2.1
1	A	55	CYS	2.0
1	A	213	ILE	2.0

### 6.2 Non-standard residues in protein, DNA, RNA chains [i](#)

There are no non-standard protein/DNA/RNA residues in this entry.

### 6.3 Carbohydrates [i](#)

In the following table, the Atoms column lists the number of modelled atoms in the group and the number defined in the chemical component dictionary. LLDF column lists the quality of electron density of the group with respect to its neighbouring residues in protein, DNA or RNA chains.

The B-factors column lists the minimum, median, 95<sup>th</sup> percentile and maximum values of B factors of atoms in the group. The column labelled 'Q< 0.9' lists the number of atoms with occupancy less than 0.9.

Mol	Type	Chain	Res	Atoms	RSCC	RSR	LLDF	B-factors(Å <sup>2</sup> )	Q<0.9
4	BMA	A	1327	11/12	0.90	0.15	1.43	36,39,40,44	0
4	MAN	A	1329	11/12	0.91	0.14	1.16	33,37,39,40	0
4	NAG	A	1325	14/15	0.88	0.12	0.61	37,41,47,53	0
5	SIA	A	1331	20/21	0.93	0.08	-1.11	42,45,48,48	0
4	FUC	A	1330	10/11	0.88	0.25	-	59,62,63,64	0
5	NAG	A	1333	15/15	0.76	0.30	-	73,84,89,89	0
4	NAG	A	1326	14/15	0.85	0.18	-	37,39,42,48	0
4	BMA	A	1328	11/12	0.82	0.27	-	49,52,54,55	0
5	GAL	A	1332	11/12	0.92	0.10	-	54,62,65,65	0

## 6.4 Ligands [i](#)

In the following table, the Atoms column lists the number of modelled atoms in the group and the number defined in the chemical component dictionary. LLDF column lists the quality of electron density of the group with respect to its neighbouring residues in protein, DNA or RNA chains. The B-factors column lists the minimum, median, 95<sup>th</sup> percentile and maximum values of B factors of atoms in the group. The column labelled 'Q< 0.9' lists the number of atoms with occupancy less than 0.9.

Mol	Type	Chain	Res	Atoms	RSCC	RSR	LLDF	B-factors(Å <sup>2</sup> )	Q<0.9
6	EPE	B	1168	15/15	0.61	0.34	25.59	64,66,73,78	0
3	NAG	A	1323	14/15	0.79	0.21	-	50,61,67,68	0
3	NAG	A	1324	14/15	0.83	0.19	-	45,52,56,62	0

## 6.5 Other polymers [i](#)

There are no such residues in this entry.