



Full wwPDB X-ray Structure Validation Report ⓘ

Oct 15, 2017 – 12:58 PM EDT

PDB ID : 3BL8
Title : Crystal structure of the extracellular domain of neuroligin 2A from mouse
Authors : Jin, X.; Koehnke, J.; Shapiro, L.
Deposited on : unknown
Resolution : 3.30 Å(reported)

This is a Full wwPDB X-ray Structure Validation Report for a publicly released PDB entry.

We welcome your comments at validation@mail.wwpdb.org

A user guide is available at

<http://wwpdb.org/validation/2016/XrayValidationReportHelp>

with specific help available everywhere you see the ⓘ symbol.

The following versions of software and data (see [references ⓘ](#)) were used in the production of this report:

MolProbity : 4.02b-467
Mogul : 1.7.2 (RC1), CSD as538be (2017)
Xtriage (Phenix) : 1.9-1692
EDS : rb-20030345
Percentile statistics : 20161228.v01 (using entries in the PDB archive December 28th 2016)
Refmac : 5.8.0135
CCP4 : 6.5.0
Ideal geometry (proteins) : Engh & Huber (2001)
Ideal geometry (DNA, RNA) : Parkinson et al. (1996)
Validation Pipeline (wwPDB-VP) : rb-20030345

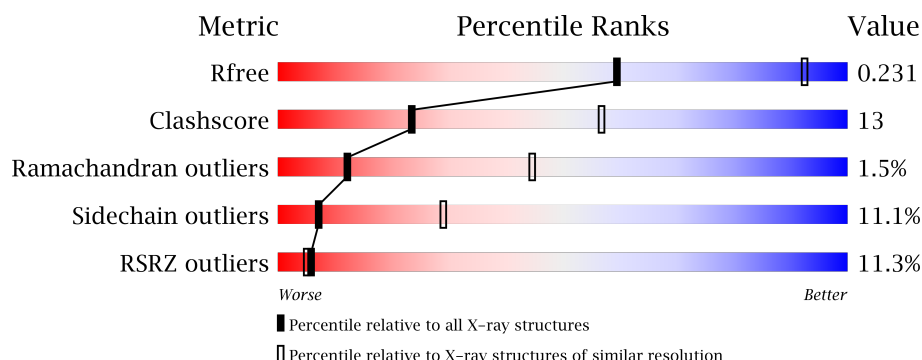
1 Overall quality at a glance

The following experimental techniques were used to determine the structure:

X-RAY DIFFRACTION

The reported resolution of this entry is 3.30 Å.

Percentile scores (ranging between 0-100) for global validation metrics of the entry are shown in the following graphic. The table shows the number of entries on which the scores are based.



Metric	Whole archive (#Entries)	Similar resolution (#Entries, resolution range(Å))
R_{free}	100719	1034 (3.36-3.24)
Clashscore	112137	1100 (3.36-3.24)
Ramachandran outliers	110173	1081 (3.36-3.24)
Sidechain outliers	110143	1080 (3.36-3.24)
RSRZ outliers	101464	1039 (3.36-3.24)

The table below summarises the geometric issues observed across the polymeric chains and their fit to the electron density. The red, orange, yellow and green segments on the lower bar indicate the fraction of residues that contain outliers for ≥ 3 , 2, 1 and 0 types of geometric quality criteria. A grey segment represents the fraction of residues that are not modelled. The numeric value for each fraction is indicated below the corresponding segment, with a dot representing fractions $\leq 5\%$. The upper red bar (where present) indicates the fraction of residues that have poor fit to the electron density. The numeric value is given above the bar.

Mol	Chain	Length	Quality of chain
1	A	580	<div> <div>4%</div> <div> <div></div> <div>59%</div> <div>31%</div> <div>6%</div> <div>•</div> </div> </div>
1	B	580	<div> <div>9%</div> <div> <div></div> <div>64%</div> <div>24%</div> <div>6%</div> <div>6%</div> </div> </div>
1	C	580	<div> <div>8%</div> <div> <div></div> <div>66%</div> <div>25%</div> <div>•</div> <div>6%</div> </div> </div>
1	D	580	<div> <div>21%</div> <div> <div></div> <div>65%</div> <div>24%</div> <div>•</div> <div>7%</div> </div> </div>

The following table lists non-polymeric compounds, carbohydrate monomers and non-standard residues in protein, DNA, RNA chains that are outliers for geometric or electron-density-fit crite-

ria:

Mol	Type	Chain	Res	Chirality	Geometry	Clashes	Electron density
2	NAG	A	710	-	-	-	X
3	MAN	A	703	X	-	-	-

2 Entry composition

There are 5 unique types of molecules in this entry. The entry contains 17374 atoms, of which 0 are hydrogens and 0 are deuteriums.

In the tables below, the ZeroOcc column contains the number of atoms modelled with zero occupancy, the AltConf column contains the number of residues with at least one atom in alternate conformation and the Trace column contains the number of residues modelled with at most 2 atoms.

- Molecule 1 is a protein called Neuroligin-2.

Mol	Chain	Residues	Atoms					ZeroOcc	AltConf	Trace
1	A	556	Total	C	N	O	S	0	0	0
			4358	2782	744	814	18			
1	B	546	Total	C	N	O	S	0	0	0
			4283	2737	731	797	18			
1	C	545	Total	C	N	O	S	0	0	0
			4282	2736	732	796	18			
1	D	541	Total	C	N	O	S	0	0	0
			4249	2714	726	791	18			

There are 36 discrepancies between the modelled and reference sequences:

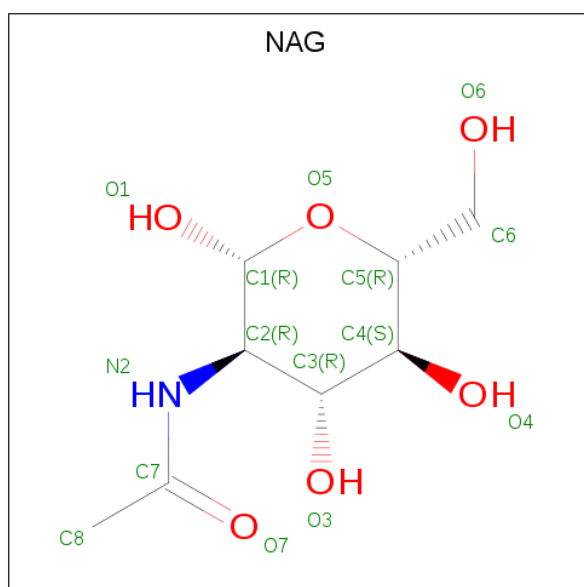
Chain	Residue	Modelled	Actual	Comment	Reference
A	40	GLN	-	EXPRESSION TAG	UNP Q69ZK9
A	41	LYS	-	EXPRESSION TAG	UNP Q69ZK9
A	613	HIS	-	EXPRESSION TAG	UNP Q69ZK9
A	614	HIS	-	EXPRESSION TAG	UNP Q69ZK9
A	615	HIS	-	EXPRESSION TAG	UNP Q69ZK9
A	616	HIS	-	EXPRESSION TAG	UNP Q69ZK9
A	617	HIS	-	EXPRESSION TAG	UNP Q69ZK9
A	618	HIS	-	EXPRESSION TAG	UNP Q69ZK9
A	619	HIS	-	EXPRESSION TAG	UNP Q69ZK9
B	40	GLN	-	EXPRESSION TAG	UNP Q69ZK9
B	41	LYS	-	EXPRESSION TAG	UNP Q69ZK9
B	613	HIS	-	EXPRESSION TAG	UNP Q69ZK9
B	614	HIS	-	EXPRESSION TAG	UNP Q69ZK9
B	615	HIS	-	EXPRESSION TAG	UNP Q69ZK9
B	616	HIS	-	EXPRESSION TAG	UNP Q69ZK9
B	617	HIS	-	EXPRESSION TAG	UNP Q69ZK9
B	618	HIS	-	EXPRESSION TAG	UNP Q69ZK9
B	619	HIS	-	EXPRESSION TAG	UNP Q69ZK9
C	40	GLN	-	EXPRESSION TAG	UNP Q69ZK9
C	41	LYS	-	EXPRESSION TAG	UNP Q69ZK9
C	613	HIS	-	EXPRESSION TAG	UNP Q69ZK9

Continued on next page...

Continued from previous page...

Chain	Residue	Modelled	Actual	Comment	Reference
C	614	HIS	-	EXPRESSION TAG	UNP Q69ZK9
C	615	HIS	-	EXPRESSION TAG	UNP Q69ZK9
C	616	HIS	-	EXPRESSION TAG	UNP Q69ZK9
C	617	HIS	-	EXPRESSION TAG	UNP Q69ZK9
C	618	HIS	-	EXPRESSION TAG	UNP Q69ZK9
C	619	HIS	-	EXPRESSION TAG	UNP Q69ZK9
D	40	GLN	-	EXPRESSION TAG	UNP Q69ZK9
D	41	LYS	-	EXPRESSION TAG	UNP Q69ZK9
D	613	HIS	-	EXPRESSION TAG	UNP Q69ZK9
D	614	HIS	-	EXPRESSION TAG	UNP Q69ZK9
D	615	HIS	-	EXPRESSION TAG	UNP Q69ZK9
D	616	HIS	-	EXPRESSION TAG	UNP Q69ZK9
D	617	HIS	-	EXPRESSION TAG	UNP Q69ZK9
D	618	HIS	-	EXPRESSION TAG	UNP Q69ZK9
D	619	HIS	-	EXPRESSION TAG	UNP Q69ZK9

- Molecule 2 is N-ACETYL-D-GLUCOSAMINE (three-letter code: NAG) (formula: $C_8H_{15}NO_6$).



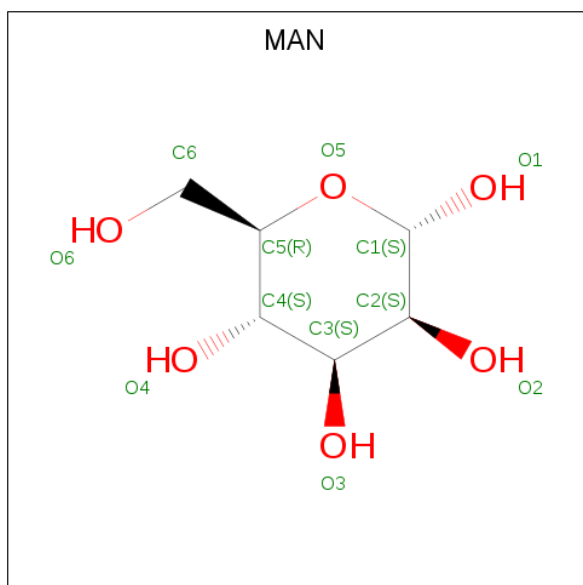
Mol	Chain	Residues	Atoms				ZeroOcc	AltConf
2	A	1	Total	C	N	O	0	0
			14	8	1	5		
2	A	1	Total	C	N	O	0	0
			14	8	1	5		
2	A	1	Total	C	N	O	0	0
			14	8	1	5		
2	B	1	Total	C	N	O	0	0
			14	8	1	5		

Continued on next page...

Continued from previous page...

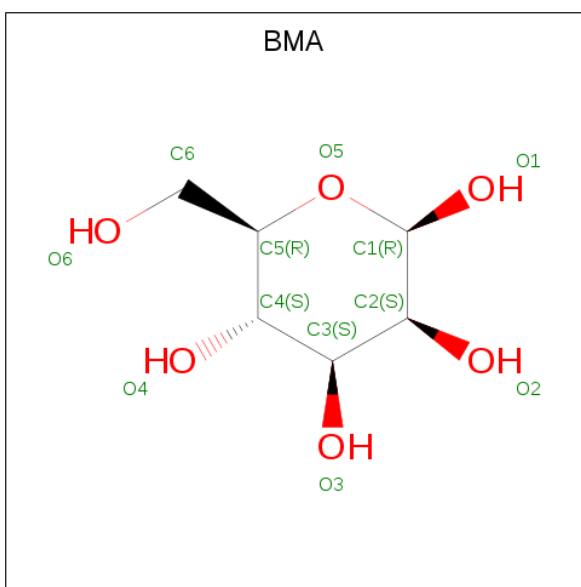
Mol	Chain	Residues	Atoms				ZeroOcc	AltConf
2	B	1	Total	C	N	O	0	0
			14	8	1	5		
2	B	1	Total	C	N	O	0	0
			14	8	1	5		

- Molecule 3 is ALPHA-D-MANNOSE (three-letter code: MAN) (formula: $C_6H_{12}O_6$).



Mol	Chain	Residues	Atoms			ZeroOcc	AltConf
3	A	1	Total	C	O	0	0
			11	6	5		
3	B	1	Total	C	O	0	0
			11	6	5		
3	B	1	Total	C	O	0	0
			11	6	5		
3	B	1	Total	C	O	0	0
			11	6	5		
3	B	1	Total	C	O	0	0
			11	6	5		

- Molecule 4 is BETA-D-MANNOSE (three-letter code: BMA) (formula: $C_6H_{12}O_6$).



Mol	Chain	Residues	Atoms			ZeroOcc	AltConf
4	B	1	Total	C	O	0	0
			11	6	5		

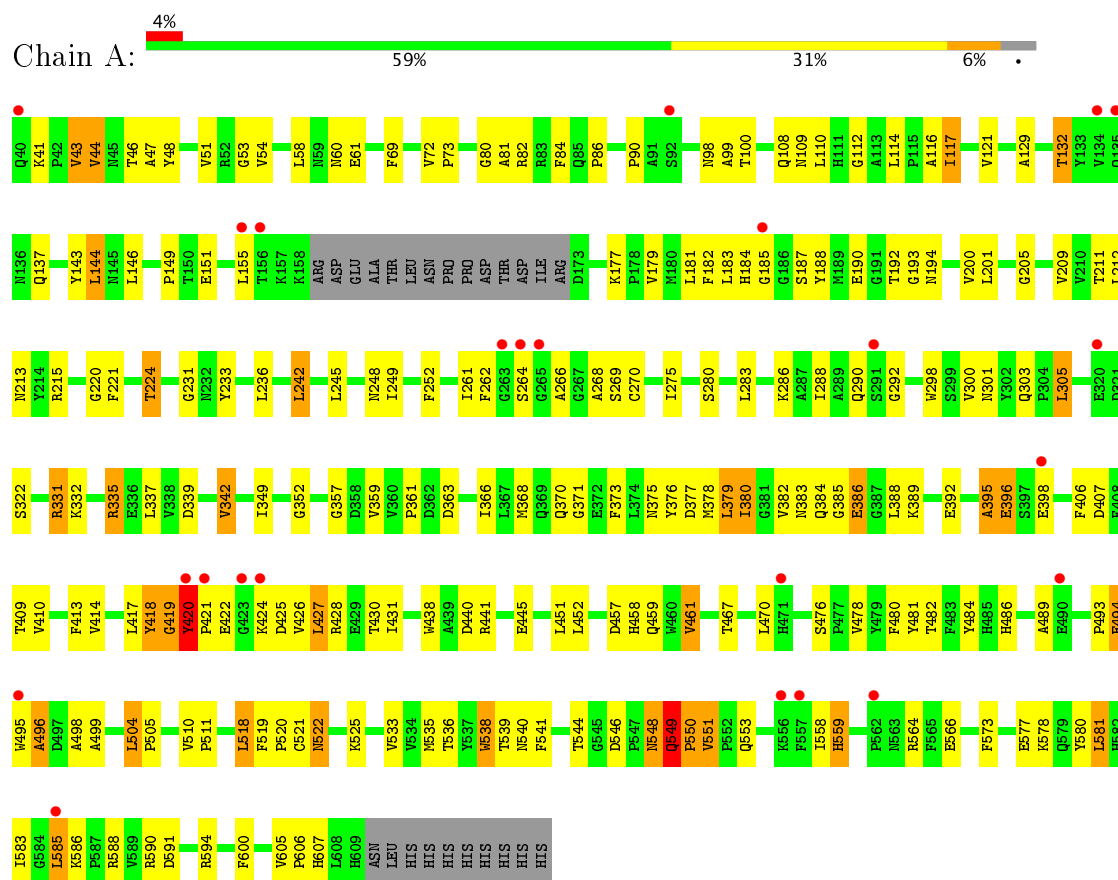
- Molecule 5 is water.

Mol	Chain	Residues	Atoms		ZeroOcc	AltConf
5	A	31	Total	O	0	0
			31	31		
5	B	11	Total	O	0	0
			11	11		
5	C	5	Total	O	0	0
			5	5		
5	D	5	Total	O	0	0
			5	5		

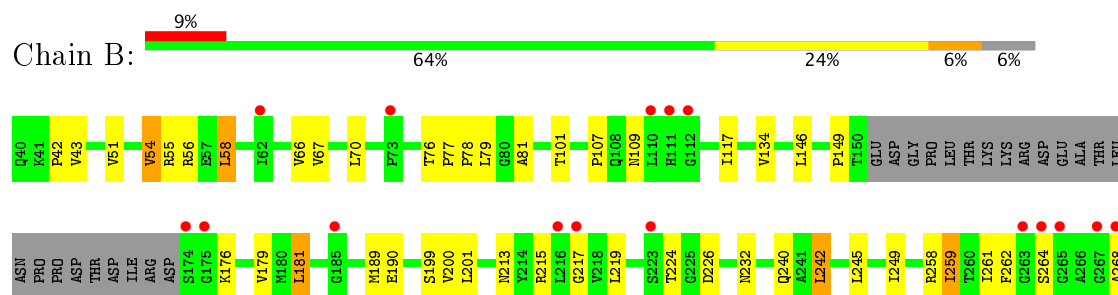
3 Residue-property plots

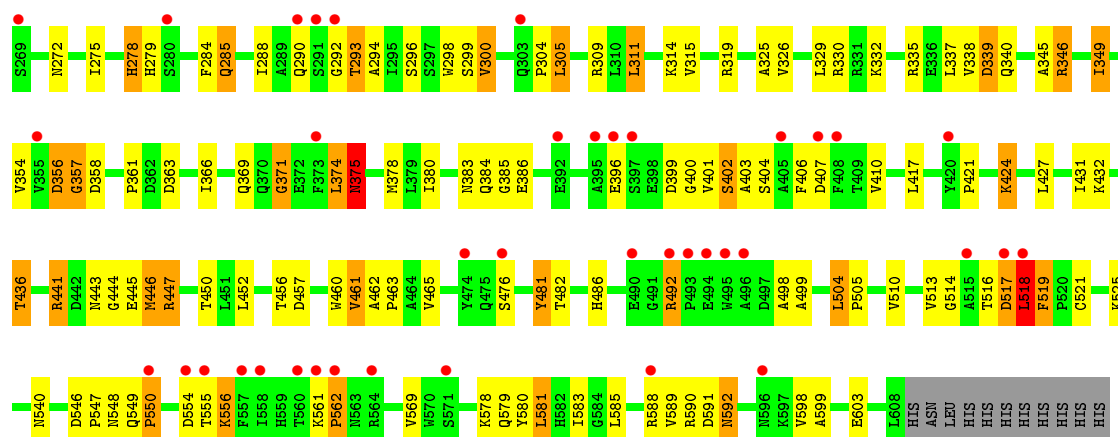
These plots are drawn for all protein, RNA and DNA chains in the entry. The first graphic for a chain summarises the proportions of the various outlier classes displayed in the second graphic. The second graphic shows the sequence view annotated by issues in geometry and electron density. Residues are color-coded according to the number of geometric quality criteria for which they contain at least one outlier: green = 0, yellow = 1, orange = 2 and red = 3 or more. A red dot above a residue indicates a poor fit to the electron density ($RSRZ > 2$). Stretches of 2 or more consecutive residues without any outlier are shown as a green connector. Residues present in the sample, but not in the model, are shown in grey.

• Molecule 1: Neuroligin-2

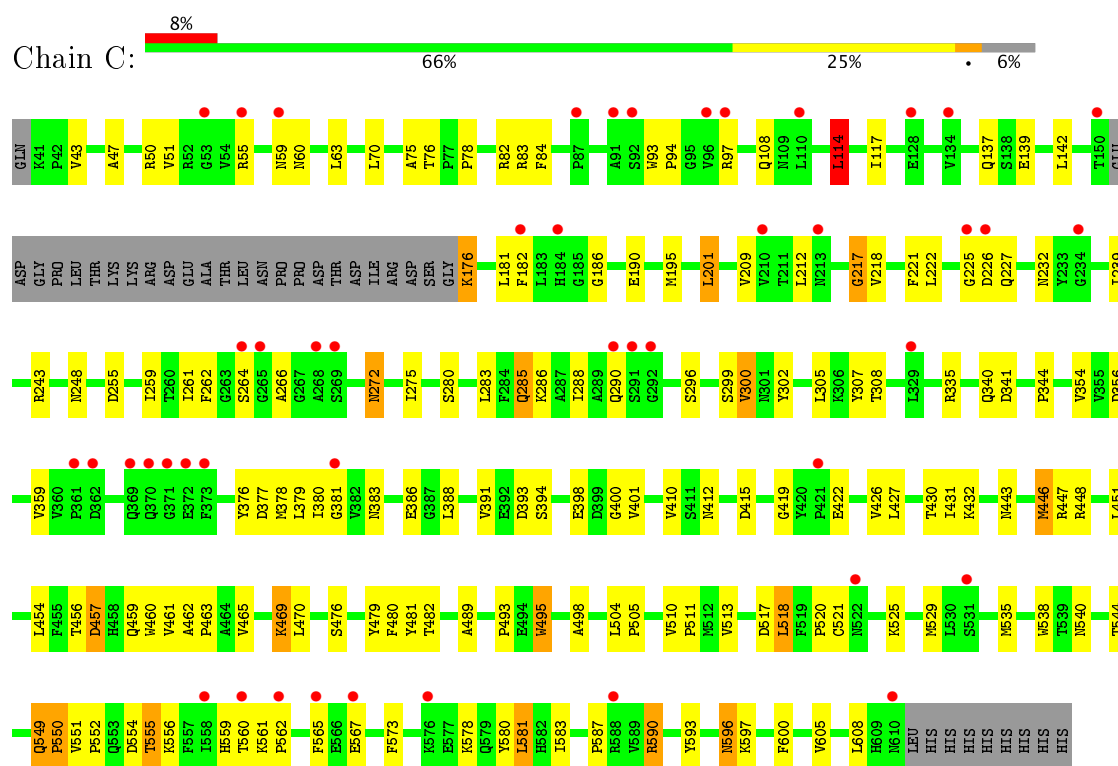


• Molecule 1: Neuroligin-2

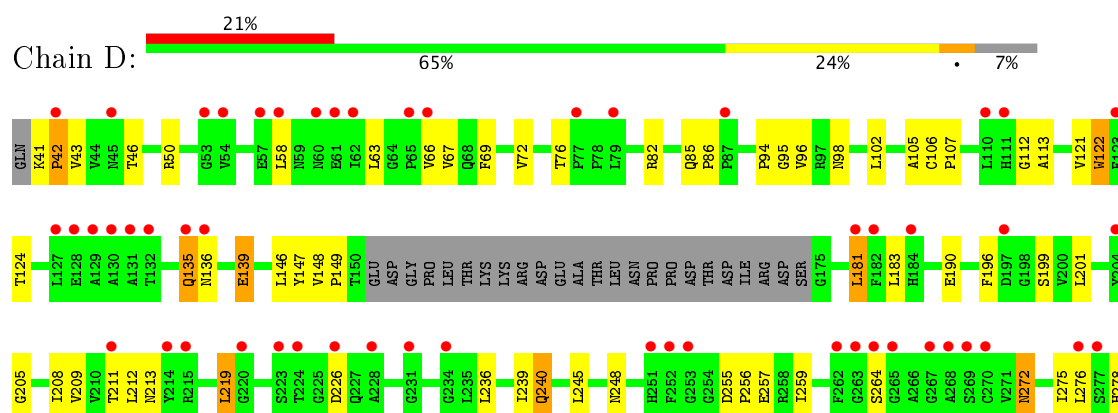


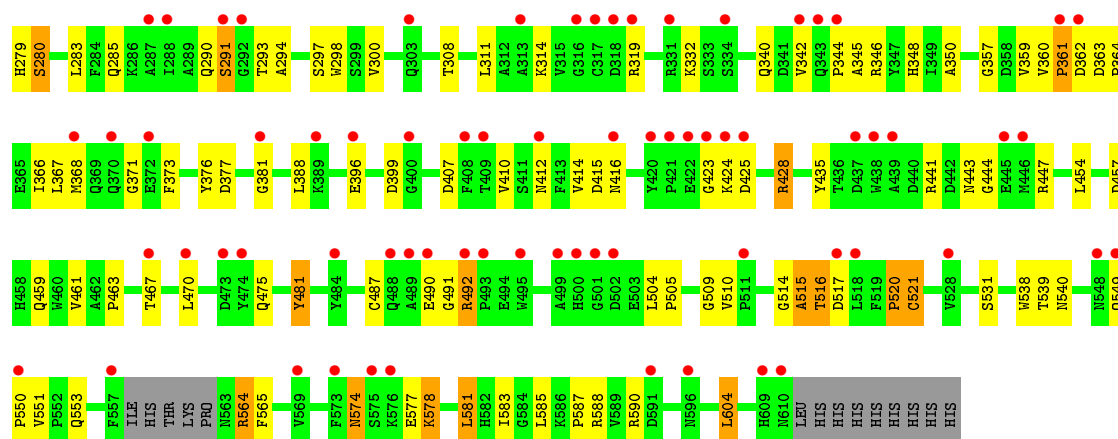


• Molecule 1: Neuroligin-2



• Molecule 1: Neuroligin-2





4 Data and refinement statistics

Property	Value	Source
Space group	C 1 2 1	Depositor
Cell constants a, b, c, α , β , γ	214.72Å 92.57Å 188.41Å 90.00° 98.36° 90.00°	Depositor
Resolution (Å)	20.00 – 3.30 29.74 – 3.30	Depositor EDS
% Data completeness (in resolution range)	98.5 (20.00-3.30) 98.5 (29.74-3.30)	Depositor EDS
R_{merge}	0.10	Depositor
R_{sym}	(Not available)	Depositor
$\langle I/\sigma(I) \rangle$ ¹	1.29 (at 3.31Å)	Xtriage
Refinement program	REFMAC 5.2.0019	Depositor
R, R_{free}	0.219 , 0.262 0.229 , 0.231	Depositor DCC
R_{free} test set	2748 reflections (5.34%)	DCC
Wilson B-factor (Å ²)	108.0	Xtriage
Anisotropy	0.159	Xtriage
Bulk solvent k_{sol} (e/Å ³), B_{sol} (Å ²)	0.29 , 135.4	EDS
L-test for twinning ²	$\langle L \rangle = 0.49$, $\langle L^2 \rangle = 0.32$	Xtriage
Estimated twinning fraction	No twinning to report.	Xtriage
F_o, F_c correlation	0.93	EDS
Total number of atoms	17374	wwPDB-VP
Average B, all atoms (Å ²)	125.0	wwPDB-VP

Xtriage's analysis on translational NCS is as follows: *The largest off-origin peak in the Patterson function is 3.25% of the height of the origin peak. No significant pseudotranslation is detected.*

¹Intensities estimated from amplitudes.

²Theoretical values of $\langle |L| \rangle$, $\langle L^2 \rangle$ for acentric reflections are 0.5, 0.333 respectively for untwinned datasets, and 0.375, 0.2 for perfectly twinned datasets.

5 Model quality

5.1 Standard geometry

Bond lengths and bond angles in the following residue types are not validated in this section: BMA, NAG, MAN

The Z score for a bond length (or angle) is the number of standard deviations the observed value is removed from the expected value. A bond length (or angle) with $|Z| > 5$ is considered an outlier worth inspection. RMSZ is the root-mean-square of all Z scores of the bond lengths (or angles).

Mol	Chain	Bond lengths		Bond angles	
		RMSZ	$\# Z > 5$	RMSZ	$\# Z > 5$
1	A	0.44	0/4478	0.65	6/6101 (0.1%)
1	B	0.36	0/4401	0.60	5/5996 (0.1%)
1	C	0.38	0/4401	0.57	4/5998 (0.1%)
1	D	0.34	0/4365	0.61	12/5945 (0.2%)
All	All	0.38	0/17645	0.61	27/24040 (0.1%)

Chiral center outliers are detected by calculating the chiral volume of a chiral center and verifying if the center is modelled as a planar moiety or with the opposite hand. A planarity outlier is detected by checking planarity of atoms in a peptide group, atoms in a mainchain group or atoms of a sidechain that are expected to be planar.

Mol	Chain	#Chirality outliers	#Planarity outliers
1	A	0	5
1	B	0	4
1	C	0	1
1	D	0	3
All	All	0	13

There are no bond length outliers.

All (27) bond angle outliers are listed below:

Mol	Chain	Res	Type	Atoms	Z	Observed(°)	Ideal(°)
1	B	396	GLU	CB-CA-C	-9.49	91.41	110.40
1	A	395	ALA	CB-CA-C	-9.02	96.57	110.10
1	D	279	HIS	N-CA-C	9.01	135.33	111.00
1	D	279	HIS	CB-CA-C	-8.34	93.72	110.40
1	D	113	ALA	N-CA-CB	8.23	121.62	110.10
1	D	112	GLY	N-CA-C	8.09	133.32	113.10
1	B	345	ALA	CB-CA-C	7.43	121.24	110.10
1	D	564	ARG	CB-CA-C	-7.30	95.81	110.40

Continued on next page...

Continued from previous page...

Mol	Chain	Res	Type	Atoms	Z	Observed(°)	Ideal(°)
1	D	291	SER	N-CA-C	7.01	129.92	111.00
1	A	496	ALA	N-CA-C	-6.28	94.04	111.00
1	D	521	CYS	CB-CA-C	6.18	122.77	110.40
1	D	280	SER	N-CA-C	-6.12	94.49	111.00
1	C	498	ALA	N-CA-C	5.91	126.95	111.00
1	C	226	ASP	N-CA-C	5.87	126.85	111.00
1	D	565	PHE	N-CA-CB	5.86	121.15	110.60
1	D	280	SER	N-CA-CB	5.83	119.25	110.50
1	C	114	LEU	CA-CB-CG	5.82	128.69	115.30
1	B	345	ALA	N-CA-C	-5.69	95.63	111.00
1	C	227	GLN	N-CA-CB	5.49	120.49	110.60
1	D	113	ALA	N-CA-C	-5.45	96.30	111.00
1	A	496	ALA	CB-CA-C	5.42	118.23	110.10
1	B	384	GLN	CB-CA-C	-5.40	99.59	110.40
1	A	395	ALA	N-CA-C	5.19	125.01	111.00
1	B	384	GLN	N-CA-C	5.18	124.99	111.00
1	D	604	LEU	CA-CB-CG	5.12	127.08	115.30
1	A	518	LEU	CA-CB-CG	5.11	127.04	115.30
1	A	396	GLU	N-CA-CB	5.05	119.69	110.60

There are no chirality outliers.

All (13) planarity outliers are listed below:

Mol	Chain	Res	Type	Group
1	A	418	TYR	Peptide
1	A	419	GLY	Peptide
1	A	420	TYR	Peptide
1	A	494	GLU	Peptide
1	A	549	GLN	Peptide
1	B	402	SER	Peptide
1	B	517	ASP	Peptide
1	B	518	LEU	Peptide
1	B	78	PRO	Peptide
1	C	549	GLN	Peptide
1	D	371	GLY	Peptide
1	D	396	GLU	Peptide
1	D	549	GLN	Peptide

5.2 Too-close contacts ⓘ

In the following table, the Non-H and H(model) columns list the number of non-hydrogen atoms and hydrogen atoms in the chain respectively. The H(added) column lists the number of hydrogen atoms added and optimized by MolProbity. The Clashes column lists the number of clashes within the asymmetric unit, whereas Symm-Clashes lists symmetry related clashes.

Mol	Chain	Non-H	H(model)	H(added)	Clashes	Symm-Clashes
1	A	4358	0	4194	157	0
1	B	4283	0	4129	102	0
1	C	4282	0	4123	91	0
1	D	4249	0	4091	80	0
2	A	42	0	37	0	0
2	B	42	0	37	4	0
3	A	11	0	10	0	0
3	B	44	0	38	0	0
4	B	11	0	8	4	0
5	A	31	0	0	0	0
5	B	11	0	0	0	0
5	C	5	0	0	0	0
5	D	5	0	0	0	0
All	All	17374	0	16667	433	0

The all-atom clashscore is defined as the number of clashes found per 1000 atoms (including hydrogen atoms). The all-atom clashscore for this structure is 13.

All (433) close contacts within the same asymmetric unit are listed below, sorted by their clash magnitude.

Atom-1	Atom-2	Interatomic distance (Å)	Clash overlap (Å)
1:A:420:TYR:H	1:A:421:PRO:HA	1.02	1.17
1:B:561:LYS:HG3	1:B:562:PRO:HD2	1.20	1.11
1:C:540:ASN:HD21	1:C:551:VAL:HG12	1.18	1.03
1:A:420:TYR:H	1:A:421:PRO:CA	1.77	0.98
1:A:421:PRO:O	1:A:424:LYS:N	1.97	0.97
1:B:561:LYS:CG	1:B:562:PRO:HD2	2.00	0.92
1:A:286:LYS:HG2	1:A:377:ASP:HB2	1.51	0.91
1:A:420:TYR:N	1:A:421:PRO:HA	1.86	0.90
1:A:457:ASP:HA	1:A:461:VAL:HG13	1.54	0.88
1:A:335:ARG:O	1:A:339:ASP:OD2	1.91	0.87
1:B:518:LEU:C	1:B:518:LEU:HD22	1.96	0.87
1:B:581:LEU:HD13	1:B:583:ILE:HG12	1.56	0.86
1:B:66:VAL:HG12	1:B:149:PRO:HA	1.58	0.85
1:A:493:PRO:O	1:A:496:ALA:CB	2.26	0.83

Continued on next page...

Continued from previous page...

Atom-1	Atom-2	Interatomic distance (Å)	Clash overlap (Å)
1:A:486:HIS:CE1	1:A:496:ALA:O	2.34	0.81
1:A:493:PRO:O	1:A:496:ALA:HB2	1.81	0.80
1:B:400:GLY:C	1:B:401:VAL:HG22	2.02	0.79
1:B:548:ASN:O	1:B:549:GLN:HG2	1.81	0.78
1:A:80:GLY:C	1:A:82:ARG:H	1.86	0.78
1:B:346:ARG:H	1:B:346:ARG:HD2	1.47	0.77
1:A:201:LEU:HA	1:A:535:MET:CE	2.13	0.77
1:A:236:LEU:HD21	1:A:359:VAL:HG11	1.66	0.76
1:A:395:ALA:O	1:A:495:TRP:CH2	2.38	0.76
1:D:514:GLY:O	1:D:515:ALA:HB3	1.85	0.75
1:A:201:LEU:HA	1:A:535:MET:HE3	1.68	0.75
1:B:403:ALA:HA	1:B:406:PHE:HB3	1.70	0.74
1:C:431:ILE:HG22	1:C:600:PHE:HZ	1.53	0.74
1:B:70:LEU:HB3	1:B:101:THR:O	1.87	0.73
1:B:375:ASN:HB2	1:B:476:SER:HB3	1.71	0.73
1:D:492:ARG:H	1:D:492:ARG:HE	1.36	0.73
1:A:420:TYR:N	1:A:421:PRO:CA	2.48	0.73
1:D:444:GLY:HA2	1:D:447:ARG:HB2	1.72	0.72
1:A:421:PRO:O	1:A:424:LYS:CB	2.37	0.72
1:D:121:VAL:HA	1:D:124:THR:HG22	1.70	0.72
1:A:108:GLN:HG2	1:A:137:GLN:NE2	2.05	0.72
1:A:41:LYS:HE2	1:A:54:VAL:HG12	1.72	0.71
1:C:286:LYS:HG2	1:C:377:ASP:HB2	1.72	0.70
1:A:73:PRO:HA	1:A:143:TYR:HD2	1.55	0.70
1:D:564:ARG:O	1:D:587:PRO:HG2	1.91	0.70
1:B:457:ASP:HA	1:B:461:VAL:HG22	1.73	0.69
1:C:431:ILE:HG22	1:C:600:PHE:CZ	2.27	0.69
1:A:201:LEU:HB3	1:A:209:VAL:HG21	1.74	0.69
1:A:268:ALA:HB3	1:A:292:GLY:HA3	1.75	0.69
1:B:400:GLY:C	1:B:401:VAL:CG2	2.61	0.69
1:A:44:VAL:HG11	1:A:252:PHE:CE2	2.28	0.69
1:D:551:VAL:O	1:D:551:VAL:HG13	1.94	0.68
1:A:378:MET:HB2	1:A:478:VAL:HA	1.74	0.68
1:C:540:ASN:ND2	1:C:551:VAL:HG12	2.02	0.68
1:D:581:LEU:HD12	1:D:583:ILE:HG13	1.74	0.67
1:D:514:GLY:O	1:D:515:ALA:CB	2.42	0.67
1:A:489:ALA:HA	1:A:521:CYS:HB3	1.77	0.67
1:B:268:ALA:HB3	1:B:292:GLY:HA3	1.75	0.67
1:A:349:ILE:HD12	1:A:352:GLY:HA3	1.77	0.66
1:B:518:LEU:H	1:B:518:LEU:HD13	1.61	0.65
1:B:518:LEU:HD22	1:B:518:LEU:O	1.96	0.65

Continued on next page...

Continued from previous page...

Atom-1	Atom-2	Interatomic distance (Å)	Clash overlap (Å)
1:B:407:ASP:HA	1:B:410:VAL:HG12	1.78	0.65
1:A:544:THR:OG1	1:A:549:GLN:HB3	1.97	0.65
1:B:432:LYS:O	1:B:436:THR:HG22	1.96	0.65
1:A:109:ASN:HB2	1:A:339:ASP:HB3	1.78	0.65
1:A:414:VAL:HG21	1:A:428:ARG:HB2	1.79	0.64
1:B:259:ILE:HD11	1:B:284:PHE:HB3	1.77	0.64
1:B:357:GLY:HA2	1:B:361:PRO:HA	1.80	0.64
1:B:518:LEU:C	1:B:518:LEU:CD2	2.66	0.63
1:B:77:PRO:HB2	1:B:79:LEU:HG	1.79	0.63
1:C:412:ASN:HA	1:C:415:ASP:HB2	1.79	0.63
1:D:106:CYS:HB3	1:D:107:PRO:HD2	1.81	0.63
1:D:236:LEU:HA	1:D:239:ILE:HG22	1.80	0.63
1:A:205:GLY:HA3	1:A:539:THR:HG21	1.79	0.63
1:C:461:VAL:O	1:C:465:VAL:HG12	1.98	0.63
1:C:114:LEU:H	1:C:114:LEU:HD22	1.63	0.63
1:D:291:SER:O	1:D:291:SER:OG	2.15	0.63
1:B:304:PRO:HG3	1:B:354:VAL:HG11	1.80	0.63
1:B:402:SER:O	1:B:404:SER:N	2.32	0.62
1:A:342:VAL:CG2	1:A:342:VAL:O	2.47	0.62
1:B:400:GLY:O	1:B:401:VAL:CG2	2.47	0.62
1:B:446:MET:HE2	1:B:446:MET:H	1.64	0.62
1:C:559:HIS:HD2	1:C:561:LYS:HB2	1.65	0.62
1:B:486:HIS:HB3	1:B:498:ALA:HA	1.82	0.62
1:A:493:PRO:O	1:A:496:ALA:HB3	1.98	0.61
1:B:581:LEU:CD1	1:B:583:ILE:HG12	2.27	0.61
1:A:264:SER:HA	1:A:290:GLN:O	1.99	0.61
1:C:378:MET:HE3	1:C:380:ILE:HD11	1.82	0.61
1:A:41:LYS:HG2	1:A:54:VAL:HA	1.83	0.61
1:C:427:LEU:HD21	1:C:605:VAL:HG13	1.82	0.61
1:D:46:THR:HB	1:D:248:ASN:HD22	1.66	0.61
1:A:548:ASN:H	1:A:548:ASN:ND2	1.99	0.61
1:B:181:LEU:HD12	1:B:242:LEU:HD13	1.81	0.61
1:D:314:LYS:HB3	1:D:340:GLN:HE22	1.66	0.60
1:D:490:GLU:CD	1:D:520:PRO:O	2.40	0.60
1:C:529:MET:HG2	1:C:555:THR:HG21	1.83	0.60
1:A:406:PHE:O	1:A:410:VAL:HG23	2.02	0.60
1:C:426:VAL:O	1:C:430:THR:HG22	2.02	0.60
1:B:374:LEU:HD12	1:B:374:LEU:H	1.67	0.59
1:B:518:LEU:CD2	1:B:518:LEU:O	2.51	0.59
1:D:490:GLU:OE1	1:D:520:PRO:O	2.20	0.59
1:D:510:VAL:HG12	1:D:515:ALA:HA	1.85	0.59

Continued on next page...

Continued from previous page...

Atom-1	Atom-2	Interatomic distance (Å)	Clash overlap (Å)
1:D:50:ARG:HD3	1:D:96:VAL:HG22	1.83	0.59
1:C:356:ASP:OD2	1:C:359:VAL:HG12	2.03	0.58
1:A:80:GLY:C	1:A:82:ARG:N	2.57	0.58
1:B:181:LEU:HD12	1:B:242:LEU:CD1	2.33	0.58
1:D:357:GLY:HA2	1:D:361:PRO:HA	1.85	0.58
1:C:186:GLY:H	1:C:266:ALA:HB3	1.69	0.58
1:A:121:VAL:HG22	1:A:389:LYS:HE2	1.84	0.58
1:B:514:GLY:O	1:B:516:THR:HG23	2.03	0.58
1:A:505:PRO:HG3	1:A:519:PHE:CD2	2.38	0.58
1:A:546:ASP:OD1	1:A:548:ASN:ND2	2.37	0.58
1:B:278:HIS:N	1:B:278:HIS:ND1	2.51	0.57
1:C:427:LEU:O	1:C:431:ILE:HG23	2.03	0.57
1:A:426:VAL:O	1:A:430:THR:HG22	2.04	0.57
1:A:368:MET:SD	1:A:467:THR:HG23	2.44	0.57
1:D:509:GLY:HA2	1:D:531:SER:OG	2.05	0.57
1:B:579:GLN:HA	1:B:591:ASP:HA	1.86	0.57
2:B:802:NAG:H4	4:B:803:BMA:O2	2.03	0.57
1:C:391:VAL:HG12	1:C:394:SER:HB3	1.85	0.57
1:D:280:SER:HB2	1:D:283:LEU:HB2	1.87	0.57
1:A:538:TRP:O	1:A:541:PHE:HB3	2.04	0.57
1:C:540:ASN:ND2	1:C:550:PRO:HD2	2.18	0.57
2:B:802:NAG:O3	4:B:803:BMA:H2	2.05	0.56
1:D:362:ASP:H	1:D:367:LEU:HD21	1.70	0.56
1:A:185:GLY:O	1:A:266:ALA:HB3	2.05	0.56
1:B:58:LEU:HD21	1:B:199:SER:HB3	1.87	0.56
1:C:381:GLY:HA3	1:C:481:TYR:CD2	2.41	0.56
1:B:400:GLY:O	1:B:401:VAL:HG23	2.06	0.56
1:D:41:LYS:HB3	1:D:42:PRO:HD2	1.88	0.56
1:D:275:ILE:HG23	1:D:376:TYR:HD2	1.71	0.55
1:A:47:ALA:H	1:A:248:ASN:ND2	2.04	0.55
1:B:356:ASP:O	1:B:358:ASP:N	2.40	0.55
1:C:465:VAL:O	1:C:469:LYS:HB2	2.07	0.55
1:C:554:ASP:OD1	1:C:556:LYS:HE2	2.07	0.55
1:B:403:ALA:CA	1:B:406:PHE:HB3	2.36	0.55
1:B:561:LYS:O	1:B:562:PRO:C	2.45	0.55
1:A:98:ASN:HB3	1:A:100:THR:HG22	1.88	0.55
1:C:550:PRO:O	1:C:552:PRO:HD3	2.07	0.55
1:A:427:LEU:O	1:A:431:ILE:HG23	2.07	0.55
1:B:561:LYS:HG3	1:B:562:PRO:CD	2.13	0.55
1:A:540:ASN:OD1	1:A:551:VAL:HG13	2.07	0.54
1:A:224:THR:HG21	1:A:322:SER:HB2	1.89	0.54

Continued on next page...

Continued from previous page...

Atom-1	Atom-2	Interatomic distance (Å)	Clash overlap (Å)
1:A:431:ILE:HG22	1:A:600:PHE:HZ	1.72	0.54
1:C:217:GLY:H	1:C:221:PHE:HD2	1.54	0.54
1:C:83:ARG:HD3	1:C:139:GLU:OE1	2.08	0.54
1:B:232:ASN:HD21	1:B:354:VAL:H	1.56	0.54
1:C:264:SER:HA	1:C:290:GLN:O	2.08	0.54
1:D:205:GLY:HA3	1:D:539:THR:HG21	1.89	0.54
1:A:395:ALA:O	1:A:495:TRP:CZ2	2.61	0.54
1:D:272:ASN:HA	1:D:275:ILE:HD12	1.90	0.54
1:B:109:ASN:HB2	1:B:339:ASP:HB3	1.90	0.53
1:C:272:ASN:HA	1:C:275:ILE:HD12	1.91	0.53
1:B:314:LYS:HB3	1:B:340:GLN:NE2	2.24	0.53
1:C:573:PHE:CE2	1:C:578:LYS:HB2	2.43	0.53
1:B:349:ILE:HD13	1:B:349:ILE:H	1.74	0.53
1:C:296:SER:HB3	1:C:299:SER:OG	2.07	0.53
1:C:462:ALA:HB3	1:C:463:PRO:HD3	1.90	0.53
1:B:375:ASN:HB2	1:B:476:SER:CB	2.37	0.53
1:C:78:PRO:HD3	1:C:142:LEU:HD12	1.91	0.53
1:C:93:TRP:CD1	1:C:97:ARG:HG3	2.44	0.53
1:C:513:VAL:HG13	1:C:513:VAL:O	2.09	0.52
1:C:443:ASN:OD1	1:C:446:MET:HB2	2.09	0.52
1:A:395:ALA:O	1:A:495:TRP:HH2	1.90	0.52
1:D:264:SER:HA	1:D:290:GLN:O	2.10	0.52
1:D:540:ASN:OD1	1:D:551:VAL:HG12	2.10	0.52
1:C:381:GLY:HA3	1:C:481:TYR:CE2	2.45	0.52
1:A:144:LEU:HA	1:A:212:LEU:HA	1.91	0.52
1:A:540:ASN:ND2	1:A:549:GLN:O	2.43	0.52
1:C:201:LEU:HB3	1:C:209:VAL:HG21	1.92	0.52
1:A:549:GLN:HB3	1:A:550:PRO:HD2	1.91	0.52
1:D:368:MET:HE2	1:D:470:LEU:HD12	1.92	0.52
1:B:378:MET:HG2	1:B:380:ILE:HG13	1.92	0.52
1:A:459:GLN:NE2	1:A:459:GLN:HA	2.24	0.51
1:B:232:ASN:ND2	1:B:354:VAL:H	2.08	0.51
1:D:58:LEU:HD11	1:D:66:VAL:HG22	1.92	0.51
1:A:236:LEU:CD2	1:A:359:VAL:HG11	2.37	0.51
1:D:412:ASN:O	1:D:416:ASN:ND2	2.44	0.51
1:D:381:GLY:HA3	1:D:481:TYR:CE2	2.44	0.51
1:A:363:ASP:HB3	1:A:366:ILE:HD12	1.93	0.51
1:B:134:VAL:HG12	1:B:134:VAL:O	2.11	0.51
1:A:414:VAL:O	1:A:419:GLY:N	2.44	0.51
1:C:201:LEU:HA	1:C:535:MET:HE3	1.93	0.50
1:D:147:TYR:HE2	1:D:211:THR:HG22	1.76	0.50

Continued on next page...

Continued from previous page...

Atom-1	Atom-2	Interatomic distance (Å)	Clash overlap (Å)
1:D:181:LEU:HD23	1:D:245:LEU:HD22	1.93	0.50
1:D:407:ASP:HA	1:D:410:VAL:HG12	1.93	0.50
1:A:421:PRO:O	1:A:424:LYS:HB3	2.11	0.50
1:A:46:THR:HB	1:A:248:ASN:HD22	1.74	0.50
1:A:540:ASN:ND2	1:A:551:VAL:O	2.36	0.50
1:D:66:VAL:HG12	1:D:149:PRO:HA	1.93	0.50
1:C:596:ASN:HD22	1:C:596:ASN:H	1.58	0.50
1:B:107:PRO:HB2	1:B:338:VAL:HG21	1.93	0.50
1:A:342:VAL:HG23	1:A:342:VAL:O	2.11	0.50
1:A:385:GLY:O	1:A:499:ALA:HA	2.11	0.50
1:B:578:LYS:HG3	1:B:592:ASN:HD21	1.77	0.50
1:D:510:VAL:CG1	1:D:515:ALA:HA	2.42	0.50
1:B:385:GLY:HA2	1:B:452:LEU:HD21	1.94	0.50
1:C:551:VAL:O	1:C:551:VAL:HG13	2.12	0.50
1:A:417:LEU:HD13	1:A:458:HIS:CD2	2.47	0.49
1:A:558:ILE:HG22	1:A:559:HIS:HD2	1.77	0.49
1:A:181:LEU:HD12	1:A:183:LEU:HD13	1.93	0.49
1:A:236:LEU:HD21	1:A:359:VAL:CG1	2.40	0.49
1:A:580:TYR:CE1	1:A:590:ARG:HB2	2.47	0.49
1:A:486:HIS:HB3	1:A:498:ALA:HA	1.95	0.49
1:C:181:LEU:HB3	1:C:261:ILE:HG22	1.95	0.49
1:C:340:GLN:O	1:C:341:ASP:HB3	2.13	0.49
1:A:117:ILE:HD12	1:A:117:ILE:H	1.78	0.49
1:A:376:TYR:O	1:A:476:SER:HB3	2.12	0.49
1:A:431:ILE:HG22	1:A:600:PHE:CZ	2.47	0.49
1:B:580:TYR:CZ	1:B:590:ARG:HB3	2.48	0.49
1:D:297:SER:HB3	1:D:459:GLN:HE22	1.78	0.49
1:B:441:ARG:HH22	1:D:578:LYS:HZ2	1.60	0.48
1:C:401:VAL:HG21	1:C:451:LEU:HD12	1.94	0.48
1:C:580:TYR:CE1	1:C:590:ARG:HB2	2.48	0.48
1:C:60:ASN:HD22	1:C:63:LEU:HG	1.77	0.48
1:A:427:LEU:HD21	1:A:605:VAL:HG13	1.94	0.48
1:C:47:ALA:H	1:C:248:ASN:ND2	2.11	0.48
1:A:332:LYS:HB2	1:A:337:LEU:HD13	1.96	0.48
1:A:600:PHE:O	1:A:605:VAL:HG23	2.14	0.48
1:C:108:GLN:H	1:C:137:GLN:HE22	1.59	0.48
1:B:54:VAL:HB	1:B:56:ARG:HD3	1.95	0.48
1:A:221:PHE:HB3	1:A:352:GLY:O	2.14	0.48
1:A:383:ASN:O	1:A:386:GLU:HG2	2.14	0.48
1:A:533:VAL:HA	1:A:553:GLN:HE22	1.79	0.48
1:A:457:ASP:OD1	1:A:594:ARG:NH2	2.47	0.48

Continued on next page...

Continued from previous page...

Atom-1	Atom-2	Interatomic distance (Å)	Clash overlap (Å)
1:B:179:VAL:HG21	1:B:249:ILE:HG12	1.96	0.48
1:A:382:VAL:HG11	1:A:461:VAL:HA	1.95	0.47
1:D:551:VAL:O	1:D:551:VAL:CG1	2.60	0.47
1:B:314:LYS:HB3	1:B:340:GLN:HE21	1.79	0.47
1:A:301:ASN:ND2	1:A:303:GLN:H	2.11	0.47
1:A:290:GLN:HB3	1:A:481:TYR:OH	2.14	0.47
1:A:368:MET:HB3	1:A:470:LEU:HD13	1.96	0.47
1:A:421:PRO:O	1:A:424:LYS:HB2	2.12	0.47
1:A:183:LEU:HD23	1:A:270:CYS:HB2	1.96	0.47
1:D:105:ALA:HA	1:D:213:ASN:HD21	1.79	0.47
1:A:564:ARG:HH12	1:A:586:LYS:HE3	1.79	0.47
1:B:421:PRO:HA	1:B:424:LYS:HB2	1.97	0.47
1:A:414:VAL:O	1:A:418:TYR:HB2	2.14	0.47
1:A:438:TRP:HZ3	1:A:441:ARG:HH11	1.61	0.47
1:B:305:LEU:HD12	1:B:305:LEU:H	1.79	0.47
1:D:435:TYR:CE2	1:D:454:LEU:HA	2.50	0.47
1:D:574:ASN:HB3	1:D:577:GLU:H	1.79	0.47
1:D:201:LEU:HB3	1:D:209:VAL:HG21	1.96	0.47
1:C:379:LEU:HD12	1:C:479:TYR:HB2	1.97	0.47
1:A:179:VAL:HG21	1:A:249:ILE:HG12	1.96	0.46
1:C:391:VAL:HG11	1:C:448:ARG:HG3	1.97	0.46
1:A:108:GLN:HG2	1:A:137:GLN:HE21	1.76	0.46
1:B:293:THR:OG1	1:B:294:ALA:N	2.49	0.46
1:A:149:PRO:HG2	1:A:177:LYS:HE3	1.96	0.46
1:B:319:ARG:HB2	1:B:325:ALA:HB2	1.98	0.46
1:D:364:PRO:O	1:D:368:MET:HG2	2.16	0.46
1:A:548:ASN:H	1:A:548:ASN:HD22	1.62	0.46
1:D:107:PRO:HG3	1:D:219:LEU:HD13	1.97	0.46
1:D:69:PHE:HB2	1:D:146:LEU:HB2	1.97	0.46
1:A:184:HIS:CE1	1:A:192:THR:HA	2.50	0.46
1:A:418:TYR:O	1:A:420:TYR:HB3	2.16	0.46
1:A:114:LEU:C	1:A:116:ALA:H	2.19	0.46
1:A:84:PHE:HA	1:A:233:TYR:CE2	2.50	0.46
1:B:465:VAL:HG11	1:B:598:VAL:HG11	1.98	0.46
1:B:518:LEU:HD21	1:B:519:PHE:CE1	2.51	0.46
1:D:196:PHE:HE1	1:D:504:LEU:HD11	1.80	0.46
1:A:129:ALA:O	1:A:132:THR:HG22	2.16	0.45
1:A:181:LEU:HD12	1:A:183:LEU:CD1	2.46	0.45
1:A:224:THR:HG22	1:A:305:LEU:HD12	1.97	0.45
1:B:42:PRO:HG2	1:B:67:VAL:HG11	1.98	0.45
1:C:493:PRO:HB3	1:C:495:TRP:CE2	2.50	0.45

Continued on next page...

Continued from previous page...

Atom-1	Atom-2	Interatomic distance (Å)	Clash overlap (Å)
1:A:181:LEU:HD11	1:A:212:LEU:HD22	1.99	0.45
1:B:578:LYS:HG3	1:B:592:ASN:ND2	2.31	0.45
1:C:422:GLU:O	1:C:426:VAL:HB	2.17	0.45
1:D:139:GLU:OE1	1:D:219:LEU:HD21	2.16	0.45
1:A:357:GLY:HA2	1:A:361:PRO:HA	1.99	0.45
1:A:413:PHE:CE1	1:A:417:LEU:HD12	2.52	0.45
1:B:599:ALA:O	1:B:603:GLU:HB2	2.16	0.45
1:C:243:ARG:HG2	1:C:283:LEU:HD21	1.98	0.45
1:D:346:ARG:HG2	1:D:416:ASN:ND2	2.31	0.45
1:A:69:PHE:HB2	1:A:146:LEU:HB2	1.97	0.45
1:B:581:LEU:HD13	1:B:583:ILE:CG1	2.39	0.45
1:C:457:ASP:OD1	1:C:597:LYS:HB3	2.17	0.45
1:C:460:TRP:C	1:C:463:PRO:HD2	2.36	0.45
1:B:444:GLY:O	1:B:447:ARG:HB2	2.17	0.45
1:D:67:VAL:HB	1:D:148:VAL:HG23	1.99	0.45
1:D:587:PRO:O	1:D:588:ARG:HG3	2.17	0.45
1:B:264:SER:HB2	1:B:290:GLN:HB2	1.99	0.45
1:C:217:GLY:HA2	1:C:221:PHE:HB2	1.99	0.45
1:D:148:VAL:HG12	1:D:208:ILE:HG12	1.98	0.45
1:A:262:PHE:HB2	1:A:288:ILE:HB	1.99	0.45
1:D:359:VAL:HG13	1:D:360:VAL:HG23	1.99	0.45
1:A:510:VAL:N	1:A:511:PRO:CD	2.80	0.45
1:D:516:THR:HG22	1:D:517:ASP:H	1.81	0.45
1:C:93:TRP:HA	1:C:94:PRO:HD3	1.86	0.44
1:A:53:GLY:HA2	1:A:99:ALA:O	2.17	0.44
1:B:300:VAL:C	1:B:349:ILE:HD11	2.38	0.44
1:B:585:LEU:HD22	1:B:585:LEU:H	1.82	0.44
1:C:75:ALA:HB3	1:C:142:LEU:HD13	2.00	0.44
1:D:122:TRP:CD1	1:D:122:TRP:C	2.91	0.44
1:C:300:VAL:HG13	1:C:302:TYR:HE2	1.81	0.44
1:C:489:ALA:HA	1:C:521:CYS:HB3	1.98	0.44
1:C:83:ARG:HG2	1:C:84:PHE:CD2	2.53	0.44
1:C:51:VAL:HG12	1:C:97:ARG:HB2	1.98	0.44
1:A:548:ASN:ND2	1:A:548:ASN:N	2.65	0.44
1:A:86:PRO:HB3	1:A:236:LEU:HD13	1.98	0.44
1:C:398:GLU:C	1:C:400:GLY:H	2.21	0.44
1:D:293:THR:OG1	1:D:294:ALA:N	2.50	0.44
1:C:114:LEU:H	1:C:114:LEU:CD2	2.31	0.44
1:D:256:PRO:HA	1:D:259:ILE:HD11	2.00	0.44
1:D:585:LEU:HD22	1:D:585:LEU:H	1.82	0.44
1:A:181:LEU:HD13	1:A:182:PHE:N	2.32	0.44

Continued on next page...

Continued from previous page...

Atom-1	Atom-2	Interatomic distance (Å)	Clash overlap (Å)
1:A:187:SER:O	1:A:188:TYR:HB2	2.18	0.44
1:A:215:ARG:HB3	1:A:220:GLY:CA	2.48	0.44
1:A:406:PHE:CE1	1:A:451:LEU:HG	2.52	0.44
1:A:384:GLN:HB2	1:A:484:TYR:CD1	2.53	0.44
1:A:581:LEU:CD1	1:A:583:ILE:HG12	2.48	0.44
1:C:518:LEU:O	1:C:520:PRO:HD3	2.18	0.44
1:A:371:GLY:HA2	1:A:373:PHE:CE2	2.52	0.44
1:B:338:VAL:HG12	1:B:339:ASP:N	2.33	0.44
1:B:462:ALA:HB3	1:B:463:PRO:HD3	2.00	0.44
1:C:482:THR:HG21	1:C:593:TYR:CE1	2.53	0.44
1:A:144:LEU:H	1:A:144:LEU:HG	1.64	0.43
1:B:55:ARG:O	1:B:56:ARG:HD2	2.17	0.43
1:C:280:SER:HA	1:C:283:LEU:HD13	1.99	0.43
1:C:376:TYR:O	1:C:476:SER:OG	2.33	0.43
1:C:410:VAL:HG11	1:C:432:LYS:HG2	2.00	0.43
1:A:151:GLU:HG3	1:A:155:LEU:HD11	2.01	0.43
1:B:176:LYS:O	1:B:258:ARG:NH2	2.51	0.43
1:B:259:ILE:H	1:B:285:GLN:NE2	2.16	0.43
1:B:445:GLU:HB2	1:B:446:MET:HE1	2.00	0.43
1:B:461:VAL:CG2	1:B:462:ALA:N	2.81	0.43
1:C:383:ASN:HB2	1:C:386:GLU:HG2	2.00	0.43
1:D:102:LEU:H	1:D:102:LEU:HD12	1.83	0.43
1:A:181:LEU:HB3	1:A:261:ILE:HG22	2.00	0.43
1:A:379:LEU:CD2	1:A:481:TYR:HD2	2.31	0.43
1:B:369:GLN:C	1:B:371:GLY:H	2.22	0.43
2:B:802:NAG:H4	4:B:803:BMA:HO2	1.83	0.43
1:C:510:VAL:N	1:C:511:PRO:CD	2.81	0.43
1:D:381:GLY:HA3	1:D:481:TYR:CD2	2.54	0.43
1:A:144:LEU:HD22	1:A:245:LEU:HD11	2.00	0.43
1:B:554:ASP:O	1:B:556:LYS:N	2.50	0.43
1:D:255:ASP:C	1:D:257:GLU:H	2.22	0.43
1:D:564:ARG:HB3	1:D:587:PRO:HG2	2.01	0.43
1:A:215:ARG:HB3	1:A:220:GLY:HA2	2.00	0.43
1:B:278:HIS:CE1	1:B:361:PRO:HG3	2.54	0.43
1:C:504:LEU:N	1:C:505:PRO:HD2	2.34	0.43
1:A:301:ASN:HB2	1:A:349:ILE:HG13	2.01	0.43
1:A:573:PHE:CZ	1:A:578:LYS:HG2	2.54	0.43
1:B:383:ASN:HB2	1:B:386:GLU:HG2	2.00	0.43
1:C:232:ASN:HD21	1:C:354:VAL:H	1.65	0.43
1:D:46:THR:HB	1:D:248:ASN:ND2	2.33	0.43
1:A:421:PRO:O	1:A:424:LYS:CA	2.64	0.43

Continued on next page...

Continued from previous page...

Atom-1	Atom-2	Interatomic distance (Å)	Clash overlap (Å)
1:B:481:TYR:CD1	1:B:481:TYR:C	2.91	0.43
1:A:410:VAL:O	1:A:413:PHE:HB3	2.19	0.43
1:A:193:GLY:H	1:A:213:ASN:ND2	2.16	0.43
1:C:430:THR:HG21	1:C:608:LEU:HD13	2.01	0.43
1:D:457:ASP:HA	1:D:461:VAL:HB	2.00	0.43
1:A:566:GLU:HA	1:A:566:GLU:OE2	2.19	0.42
1:A:388:LEU:HA	1:A:452:LEU:HD11	2.01	0.42
1:A:605:VAL:N	1:A:606:PRO:HD2	2.34	0.42
1:B:272:ASN:HA	1:B:275:ILE:HD12	2.02	0.42
1:C:264:SER:HB2	1:C:290:GLN:HE21	1.83	0.42
1:A:378:MET:HE2	1:A:380:ILE:HD11	2.01	0.42
1:B:81:ALA:HA	1:B:330:ARG:HD3	2.00	0.42
1:B:514:GLY:O	1:B:516:THR:CG2	2.68	0.42
1:C:288:ILE:HD13	1:C:538:TRP:CD1	2.54	0.42
1:D:278:HIS:HB2	1:D:361:PRO:HG3	2.01	0.42
1:A:504:LEU:O	1:A:505:PRO:C	2.57	0.42
1:B:262:PHE:HB2	1:B:288:ILE:HB	2.02	0.42
1:C:93:TRP:CE2	1:C:97:ARG:HD2	2.54	0.42
1:D:540:ASN:HD21	1:D:551:VAL:HG12	1.84	0.42
1:A:242:LEU:HD12	1:A:242:LEU:HA	1.94	0.42
1:D:280:SER:HA	1:D:283:LEU:HD13	2.01	0.42
1:A:375:ASN:HA	1:A:476:SER:OG	2.18	0.42
1:A:44:VAL:HG12	1:A:69:PHE:CZ	2.55	0.42
1:C:565:PHE:CE2	1:C:587:PRO:HB3	2.54	0.42
1:A:414:VAL:HG23	1:A:424:LYS:HE2	2.02	0.42
2:B:802:NAG:O3	4:B:803:BMA:C2	2.68	0.42
1:C:84:PHE:HE1	1:C:222:LEU:HB3	1.84	0.42
1:A:262:PHE:CB	1:A:288:ILE:HB	2.50	0.42
1:D:135:GLN:HG3	1:D:136:ASN:HD22	1.84	0.42
1:D:414:VAL:HG21	1:D:428:ARG:HG2	2.02	0.42
1:C:559:HIS:CD2	1:C:561:LYS:HB2	2.49	0.42
1:D:585:LEU:O	1:D:587:PRO:HD3	2.20	0.42
1:C:176:LYS:HB3	1:C:255:ASP:HB2	2.02	0.41
1:A:380:ILE:O	1:A:480:PHE:HA	2.20	0.41
1:A:420:TYR:O	1:A:420:TYR:CD1	2.73	0.41
1:B:363:ASP:HB2	1:B:366:ILE:HD12	2.01	0.41
1:C:459:GLN:O	1:C:463:PRO:HG2	2.20	0.41
1:C:581:LEU:HD12	1:C:583:ILE:HG12	2.02	0.41
1:D:344:PRO:HB3	1:D:350:ALA:N	2.35	0.41
1:B:79:LEU:HD23	1:B:79:LEU:HA	1.94	0.41
1:A:266:ALA:O	1:A:269:SER:HB2	2.20	0.41

Continued on next page...

Continued from previous page...

Atom-1	Atom-2	Interatomic distance (Å)	Clash overlap (Å)
1:B:546:ASP:HA	1:B:547:PRO:HD3	1.88	0.41
1:D:196:PHE:CE1	1:D:504:LEU:HD11	2.55	0.41
1:D:345:ALA:HB3	1:D:348:HIS:HB2	2.02	0.41
1:D:363:ASP:HB3	1:D:366:ILE:HD12	2.03	0.41
1:D:364:PRO:HA	1:D:367:LEU:HD12	2.03	0.41
1:B:326:VAL:HA	1:B:329:LEU:HD12	2.03	0.41
1:B:385:GLY:O	1:B:499:ALA:HA	2.21	0.41
1:C:580:TYR:CZ	1:C:590:ARG:HB2	2.56	0.41
1:A:182:PHE:HB3	1:A:211:THR:HG22	2.02	0.41
1:A:525:LYS:HD2	1:A:559:HIS:NE2	2.36	0.41
1:B:504:LEU:N	1:B:505:PRO:HD2	2.36	0.41
1:C:78:PRO:HA	1:C:82:ARG:HB2	2.03	0.41
1:D:236:LEU:O	1:D:240:GLN:HB2	2.19	0.41
1:A:192:THR:C	1:A:194:ASN:N	2.73	0.41
1:A:275:ILE:HA	1:A:376:TYR:HE2	1.86	0.41
1:A:522:ASN:HD22	1:A:522:ASN:HA	1.56	0.41
1:B:492:ARG:H	1:B:492:ARG:HG2	1.74	0.41
1:C:288:ILE:HG21	1:C:538:TRP:NE1	2.35	0.41
1:C:556:LYS:HB2	1:C:560:THR:HG22	2.02	0.41
1:C:93:TRP:CD2	1:C:97:ARG:HD2	2.56	0.41
1:D:275:ILE:HG23	1:D:376:TYR:CD2	2.52	0.41
1:B:549:GLN:HA	1:B:550:PRO:HA	1.71	0.41
1:C:182:PHE:HB2	1:C:262:PHE:CE2	2.56	0.41
1:A:458:HIS:CD2	1:A:459:GLN:NE2	2.89	0.41
1:A:60:ASN:OD1	1:A:61:GLU:N	2.54	0.41
1:C:259:ILE:H	1:C:285:GLN:NE2	2.19	0.41
1:C:43:VAL:HA	1:C:51:VAL:O	2.21	0.41
1:A:188:TYR:CE2	1:A:349:ILE:HD13	2.56	0.41
1:A:43:VAL:HA	1:A:51:VAL:O	2.21	0.41
1:A:585:LEU:HD12	1:A:585:LEU:HA	1.81	0.41
1:D:85:GLN:HG3	1:D:86:PRO:HD2	2.02	0.41
1:A:231:GLY:HA2	1:A:233:TYR:CE2	2.56	0.40
1:B:311:LEU:HD22	1:B:340:GLN:HG2	2.03	0.40
1:B:456:THR:HA	1:B:460:TRP:CE3	2.56	0.40
1:C:380:ILE:O	1:C:480:PHE:HA	2.22	0.40
1:A:44:VAL:HG11	1:A:252:PHE:CD2	2.56	0.40
1:A:540:ASN:HB3	1:A:549:GLN:O	2.22	0.40
1:B:293:THR:HG23	1:B:296:SER:OG	2.21	0.40
1:B:315:VAL:O	1:B:332:LYS:NZ	2.55	0.40
1:C:307:TYR:CE2	1:C:344:PRO:HA	2.55	0.40
1:D:504:LEU:N	1:D:505:PRO:HD2	2.37	0.40

Continued on next page...

Continued from previous page...

Atom-1	Atom-2	Interatomic distance (Å)	Clash overlap (Å)
1:B:58:LEU:HD13	1:B:58:LEU:HA	1.94	0.40
1:A:200:VAL:HG12	1:A:535:MET:HE1	2.03	0.40
1:A:331:ARG:HE	1:A:331:ARG:HB2	1.70	0.40
1:A:392:GLU:HA	1:A:395:ALA:HB2	2.04	0.40
1:A:48:TYR:CZ	1:A:90:PRO:HD2	2.57	0.40
1:B:293:THR:O	1:B:299:SER:OG	2.38	0.40
1:B:513:VAL:CG1	1:B:514:GLY:N	2.85	0.40
1:C:456:THR:HA	1:C:460:TRP:HE3	1.86	0.40
1:D:293:THR:HG21	1:D:463:PRO:CB	2.51	0.40

There are no symmetry-related clashes.

5.3 Torsion angles [i](#)

5.3.1 Protein backbone [i](#)

In the following table, the Percentiles column shows the percent Ramachandran outliers of the chain as a percentile score with respect to all X-ray entries followed by that with respect to entries of similar resolution.

The Analysed column shows the number of residues for which the backbone conformation was analysed, and the total number of residues.

Mol	Chain	Analysed	Favoured	Allowed	Outliers	Percentiles	
1	A	552/580 (95%)	490 (89%)	56 (10%)	6 (1%)	17	52
1	B	542/580 (93%)	467 (86%)	66 (12%)	9 (2%)	11	42
1	C	541/580 (93%)	469 (87%)	67 (12%)	5 (1%)	20	55
1	D	535/580 (92%)	456 (85%)	67 (12%)	12 (2%)	8	37
All	All	2170/2320 (94%)	1882 (87%)	256 (12%)	32 (2%)	12	44

All (32) Ramachandran outliers are listed below:

Mol	Chain	Res	Type
1	A	550	PRO
1	B	357	GLY
1	C	550	PRO
1	D	94	PRO
1	D	550	PRO
1	B	217	GLY

Continued on next page...

Continued from previous page...

Mol	Chain	Res	Type
1	B	279	HIS
1	B	371	GLY
1	B	399	ASP
1	B	562	PRO
1	D	42	PRO
1	D	491	GLY
1	D	515	ALA
1	A	420	TYR
1	C	562	PRO
1	D	361	PRO
1	A	386	GLU
1	A	520	PRO
1	B	375	ASN
1	B	550	PRO
1	B	555	THR
1	C	419	GLY
1	D	441	ARG
1	D	475	GLN
1	D	95	GLY
1	A	81	ALA
1	C	217	GLY
1	D	423	GLY
1	C	225	GLY
1	A	112	GLY
1	D	43	VAL
1	D	520	PRO

5.3.2 Protein sidechains ⓘ

In the following table, the Percentiles column shows the percent sidechain outliers of the chain as a percentile score with respect to all X-ray entries followed by that with respect to entries of similar resolution.

The Analysed column shows the number of residues for which the sidechain conformation was analysed, and the total number of residues.

Mol	Chain	Analysed	Rotameric	Outliers	Percentiles	
1	A	462/488 (95%)	413 (89%)	49 (11%)	8	31
1	B	454/488 (93%)	388 (86%)	66 (14%)	4	18
1	C	454/488 (93%)	415 (91%)	39 (9%)	12	42
1	D	450/488 (92%)	402 (89%)	48 (11%)	8	30

Continued on next page...

Continued from previous page...

Mol	Chain	Analysed	Rotameric	Outliers	Percentiles
All	All	1820/1952 (93%)	1618 (89%)	202 (11%)	7 29

All (202) residues with a non-rotameric sidechain are listed below:

Mol	Chain	Res	Type
1	A	43	VAL
1	A	44	VAL
1	A	58	LEU
1	A	72	VAL
1	A	110	LEU
1	A	117	ILE
1	A	132	THR
1	A	144	LEU
1	A	190	GLU
1	A	224	THR
1	A	242	LEU
1	A	280	SER
1	A	283	LEU
1	A	298	TRP
1	A	300	VAL
1	A	305	LEU
1	A	331	ARG
1	A	335	ARG
1	A	342	VAL
1	A	370	GLN
1	A	379	LEU
1	A	380	ILE
1	A	396	GLU
1	A	398	GLU
1	A	407	ASP
1	A	409	THR
1	A	422	GLU
1	A	425	ASP
1	A	427	LEU
1	A	440	ASP
1	A	445	GLU
1	A	461	VAL
1	A	482	THR
1	A	494	GLU
1	A	504	LEU
1	A	518	LEU
1	A	522	ASN

Continued on next page...

Continued from previous page...

Mol	Chain	Res	Type
1	A	536	THR
1	A	538	TRP
1	A	548	ASN
1	A	549	GLN
1	A	551	VAL
1	A	559	HIS
1	A	577	GLU
1	A	581	LEU
1	A	585	LEU
1	A	588	ARG
1	A	591	ASP
1	A	607	HIS
1	B	43	VAL
1	B	51	VAL
1	B	54	VAL
1	B	58	LEU
1	B	76	THR
1	B	117	ILE
1	B	146	LEU
1	B	181	LEU
1	B	189	MET
1	B	190	GLU
1	B	200	VAL
1	B	201	LEU
1	B	213	ASN
1	B	215	ARG
1	B	219	LEU
1	B	224	THR
1	B	226	ASP
1	B	240	GLN
1	B	242	LEU
1	B	245	LEU
1	B	259	ILE
1	B	261	ILE
1	B	278	HIS
1	B	285	GLN
1	B	293	THR
1	B	298	TRP
1	B	300	VAL
1	B	305	LEU
1	B	309	ARG
1	B	311	LEU

Continued on next page...

Continued from previous page...

Mol	Chain	Res	Type
1	B	335	ARG
1	B	337	LEU
1	B	339	ASP
1	B	346	ARG
1	B	349	ILE
1	B	356	ASP
1	B	374	LEU
1	B	375	ASN
1	B	417	LEU
1	B	424	LYS
1	B	427	LEU
1	B	431	ILE
1	B	436	THR
1	B	441	ARG
1	B	443	ASN
1	B	446	MET
1	B	447	ARG
1	B	450	THR
1	B	461	VAL
1	B	481	TYR
1	B	482	THR
1	B	492	ARG
1	B	504	LEU
1	B	510	VAL
1	B	517	ASP
1	B	518	LEU
1	B	519	PHE
1	B	521	CYS
1	B	525	LYS
1	B	540	ASN
1	B	556	LYS
1	B	569	VAL
1	B	581	LEU
1	B	588	ARG
1	B	589	VAL
1	B	592	ASN
1	C	50	ARG
1	C	55	ARG
1	C	59	ASN
1	C	70	LEU
1	C	76	THR
1	C	114	LEU

Continued on next page...

Continued from previous page...

Mol	Chain	Res	Type
1	C	117	ILE
1	C	176	LYS
1	C	190	GLU
1	C	195	MET
1	C	201	LEU
1	C	212	LEU
1	C	218	VAL
1	C	239	ILE
1	C	272	ASN
1	C	285	GLN
1	C	300	VAL
1	C	305	LEU
1	C	308	THR
1	C	335	ARG
1	C	388	LEU
1	C	393	ASP
1	C	446	MET
1	C	447	ARG
1	C	454	LEU
1	C	457	ASP
1	C	469	LYS
1	C	470	LEU
1	C	495	TRP
1	C	517	ASP
1	C	518	LEU
1	C	525	LYS
1	C	544	THR
1	C	549	GLN
1	C	555	THR
1	C	567	GLU
1	C	581	LEU
1	C	590	ARG
1	C	596	ASN
1	D	63	LEU
1	D	72	VAL
1	D	76	THR
1	D	82	ARG
1	D	98	ASN
1	D	122	TRP
1	D	135	GLN
1	D	139	GLU
1	D	181	LEU

Continued on next page...

Continued from previous page...

Mol	Chain	Res	Type
1	D	183	LEU
1	D	190	GLU
1	D	199	SER
1	D	212	LEU
1	D	219	LEU
1	D	226	ASP
1	D	240	GLN
1	D	272	ASN
1	D	276	LEU
1	D	285	GLN
1	D	298	TRP
1	D	300	VAL
1	D	308	THR
1	D	311	LEU
1	D	319	ARG
1	D	332	LYS
1	D	342	VAL
1	D	373	PHE
1	D	377	ASP
1	D	388	LEU
1	D	399	ASP
1	D	415	ASP
1	D	424	LYS
1	D	425	ASP
1	D	428	ARG
1	D	443	ASN
1	D	467	THR
1	D	481	TYR
1	D	487	CYS
1	D	492	ARG
1	D	516	THR
1	D	521	CYS
1	D	538	TRP
1	D	553	GLN
1	D	574	ASN
1	D	578	LYS
1	D	581	LEU
1	D	590	ARG
1	D	604	LEU

Some sidechains can be flipped to improve hydrogen bonding and reduce clashes. All (59) such sidechains are listed below:

Mol	Chain	Res	Type
1	A	109	ASN
1	A	184	HIS
1	A	213	ASN
1	A	248	ASN
1	A	272	ASN
1	A	303	GLN
1	A	340	GLN
1	A	384	GLN
1	A	412	ASN
1	A	416	ASN
1	A	458	HIS
1	A	459	GLN
1	A	471	HIS
1	A	522	ASN
1	A	553	GLN
1	A	559	HIS
1	B	68	GLN
1	B	206	ASN
1	B	227	GLN
1	B	232	ASN
1	B	272	ASN
1	B	285	GLN
1	B	303	GLN
1	B	340	GLN
1	B	375	ASN
1	B	384	GLN
1	B	459	GLN
1	B	540	ASN
1	B	559	HIS
1	B	592	ASN
1	C	59	ASN
1	C	60	ASN
1	C	136	ASN
1	C	137	GLN
1	C	238	GLN
1	C	248	ASN
1	C	279	HIS
1	C	285	GLN
1	C	340	GLN
1	C	348	HIS
1	C	384	GLN
1	C	458	HIS
1	C	540	ASN

Continued on next page...

Continued from previous page...

Mol	Chain	Res	Type
1	C	553	GLN
1	C	559	HIS
1	C	563	ASN
1	C	596	ASN
1	D	68	GLN
1	D	98	ASN
1	D	136	ASN
1	D	248	ASN
1	D	285	GLN
1	D	340	GLN
1	D	369	GLN
1	D	416	ASN
1	D	458	HIS
1	D	459	GLN
1	D	553	GLN
1	D	574	ASN

5.3.3 RNA [i](#)

There are no RNA molecules in this entry.

5.4 Non-standard residues in protein, DNA, RNA chains [i](#)

There are no non-standard protein/DNA/RNA residues in this entry.

5.5 Carbohydrates [i](#)

There are no carbohydrates in this entry.

5.6 Ligand geometry [i](#)

12 ligands are modelled in this entry.

In the following table, the Counts columns list the number of bonds (or angles) for which Mogul statistics could be retrieved, the number of bonds (or angles) that are observed in the model and the number of bonds (or angles) that are defined in the Chemical Component Dictionary. The Link column lists molecule types, if any, to which the group is linked. The Z score for a bond length (or angle) is the number of standard deviations the observed value is removed from the expected value. A bond length (or angle) with $|Z| > 2$ is considered an outlier worth inspection. RMSZ is the root-mean-square of all Z scores of the bond lengths (or angles).

Mol	Type	Chain	Res	Link	Bond lengths			Bond angles		
					Counts	RMSZ	# Z > 2	Counts	RMSZ	# Z > 2
2	NAG	A	701	1,2	14,14,15	0.63	0	15,19,21	1.36	3 (20%)
2	NAG	A	702	3,2	14,14,15	0.55	0	15,19,21	1.31	3 (20%)
3	MAN	A	703	2	11,11,12	0.69	0	13,15,17	0.62	0
2	NAG	A	710	-	14,14,15	0.67	0	15,19,21	1.32	1 (6%)
2	NAG	B	801	1,2	14,14,15	1.19	1 (7%)	15,19,21	1.28	2 (13%)
2	NAG	B	802	2,4	14,14,15	0.52	0	15,19,21	1.56	4 (26%)
4	BMA	B	803	3,2	11,11,12	0.92	0	13,15,17	2.15	2 (15%)
3	MAN	B	804	4	11,11,12	0.87	0	13,15,17	2.78	4 (30%)
3	MAN	B	805	3	11,11,12	0.65	0	13,15,17	1.80	2 (15%)
3	MAN	B	806	3,4	11,11,12	0.69	0	13,15,17	2.86	5 (38%)
3	MAN	B	807	3	11,11,12	0.59	0	13,15,17	2.20	2 (15%)
2	NAG	B	810	1	14,14,15	0.70	0	15,19,21	1.47	2 (13%)

In the following table, the Chirals column lists the number of chiral outliers, the number of chiral centers analysed, the number of these observed in the model and the number defined in the Chemical Component Dictionary. Similar counts are reported in the Torsion and Rings columns. '-' means no outliers of that kind were identified.

Mol	Type	Chain	Res	Link	Chirals	Torsions	Rings
2	NAG	A	701	1,2	-	0/6/23/26	0/1/1/1
2	NAG	A	702	3,2	-	0/6/23/26	0/1/1/1
3	MAN	A	703	2	1/1/4/5	0/2/19/22	0/1/1/1
2	NAG	A	710	-	-	0/6/23/26	0/1/1/1
2	NAG	B	801	1,2	-	0/6/23/26	0/1/1/1
2	NAG	B	802	2,4	-	0/6/23/26	0/1/1/1
4	BMA	B	803	3,2	-	0/2/19/22	0/1/1/1
3	MAN	B	804	4	-	0/2/19/22	0/1/1/1
3	MAN	B	805	3	-	0/2/19/22	0/1/1/1
3	MAN	B	806	3,4	-	0/2/19/22	0/1/1/1
3	MAN	B	807	3	-	0/2/19/22	0/1/1/1
2	NAG	B	810	1	-	0/6/23/26	0/1/1/1

All (1) bond length outliers are listed below:

Mol	Chain	Res	Type	Atoms	Z	Observed(Å)	Ideal(Å)
2	B	801	NAG	O5-C1	-4.06	1.37	1.43

All (30) bond angle outliers are listed below:

Mol	Chain	Res	Type	Atoms	Z	Observed(°)	Ideal(°)
4	B	803	BMA	C3-C4-C5	-5.85	99.90	110.22
3	B	804	MAN	C1-C2-C3	-5.52	102.65	109.65
3	B	806	MAN	O3-C3-C2	-3.90	102.93	110.02
3	B	804	MAN	O4-C4-C3	-3.87	101.93	110.36
4	B	803	BMA	O6-C6-C5	-3.11	100.88	111.34
2	B	802	NAG	O3-C3-C2	-3.00	102.95	109.39
2	A	702	NAG	O5-C1-C2	-2.90	107.44	111.47
2	A	701	NAG	O4-C4-C3	-2.35	105.24	110.36
2	B	801	NAG	O5-C1-C2	-2.34	108.22	111.47
2	A	702	NAG	C4-C3-C2	-2.23	107.75	111.02
2	B	802	NAG	O5-C1-C2	-2.20	108.41	111.47
2	A	701	NAG	O5-C1-C2	-2.07	108.59	111.47
2	A	702	NAG	C1-C2-N2	2.05	114.00	110.49
3	B	805	MAN	C3-C4-C5	2.07	113.86	110.22
3	B	807	MAN	O5-C1-C2	2.62	114.89	110.79
2	B	801	NAG	C1-O5-C5	2.64	115.81	112.17
2	B	810	NAG	C3-C4-C5	2.68	114.94	110.22
2	B	802	NAG	C1-O5-C5	2.81	116.05	112.17
2	B	802	NAG	C4-C3-C2	2.87	115.22	111.02
2	A	701	NAG	C4-C3-C2	2.89	115.25	111.02
3	B	804	MAN	C1-O5-C5	3.06	116.39	112.17
3	B	806	MAN	C3-C4-C5	3.67	116.68	110.22
2	A	710	NAG	C4-C3-C2	3.98	116.85	111.02
3	B	806	MAN	O5-C1-C2	4.20	117.37	110.79
3	B	806	MAN	C1-C2-C3	4.25	115.04	109.65
2	B	810	NAG	C4-C3-C2	4.42	117.50	111.02
3	B	805	MAN	C1-O5-C5	5.35	119.54	112.17
3	B	804	MAN	C3-C4-C5	5.87	120.57	110.22
3	B	806	MAN	C1-O5-C5	6.02	120.47	112.17
3	B	807	MAN	C1-O5-C5	6.92	121.71	112.17

All (1) chirality outliers are listed below:

Mol	Chain	Res	Type	Atom
3	A	703	MAN	C1

There are no torsion outliers.

There are no ring outliers.

2 monomers are involved in 4 short contacts:

Mol	Chain	Res	Type	Clashes	Symm-Clashes
2	B	802	NAG	4	0

Continued on next page...

Continued from previous page...

Mol	Chain	Res	Type	Clashes	Symm-Clashes
4	B	803	BMA	4	0

5.7 Other polymers [i](#)

There are no such residues in this entry.

5.8 Polymer linkage issues [i](#)

There are no chain breaks in this entry.

6 Fit of model and data

6.1 Protein, DNA and RNA chains

In the following table, the column labelled ‘#RSRZ> 2’ contains the number (and percentage) of RSRZ outliers, followed by percent RSRZ outliers for the chain as percentile scores relative to all X-ray entries and entries of similar resolution. The OWAB column contains the minimum, median, 95th percentile and maximum values of the occupancy-weighted average B-factor per residue. The column labelled ‘Q< 0.9’ lists the number of (and percentage) of residues with an average occupancy less than 0.9.

Mol	Chain	Analysed	<RSRZ>	#RSRZ>2	OWAB(Å ²)	Q<0.9
1	A	556/580 (95%)	0.27	24 (4%) 36 34	37, 122, 137, 148	0
1	B	546/580 (94%)	0.65	55 (10%) 8 7	33, 127, 137, 145	0
1	C	545/580 (93%)	0.53	46 (8%) 12 11	33, 123, 134, 139	0
1	D	541/580 (93%)	1.11	123 (22%) 1 1	34, 130, 138, 153	0
All	All	2188/2320 (94%)	0.64	248 (11%) 6 5	33, 126, 137, 153	0

All (248) RSRZ outliers are listed below:

Mol	Chain	Res	Type	RSRZ
1	D	557	PHE	8.1
1	C	92	SER	7.2
1	C	91	ALA	7.1
1	D	437	ASP	6.7
1	D	57	GLU	6.6
1	D	493	PRO	6.0
1	B	558	ILE	5.9
1	D	343	GLN	5.8
1	D	54	VAL	5.7
1	D	421	PRO	5.7
1	D	263	GLY	5.4
1	C	560	THR	5.3
1	D	317	CYS	5.3
1	D	264	SER	4.9
1	D	318	ASP	4.9
1	D	423	GLY	4.8
1	D	132	THR	4.7
1	D	473	ASP	4.7
1	C	59	ASN	4.6
1	D	528	VAL	4.5
1	B	555	THR	4.5

Continued on next page...

Continued from previous page...

Mol	Chain	Res	Type	RSRZ
1	D	424	LYS	4.5
1	D	292	GLY	4.4
1	D	408	PHE	4.4
1	D	111	HIS	4.4
1	D	596	ASN	4.4
1	A	420	TYR	4.3
1	D	223	SER	4.2
1	D	446	MET	4.2
1	D	53	GLY	4.1
1	D	372	GLU	4.1
1	C	264	SER	4.0
1	C	291	SER	4.0
1	D	416	ASN	4.0
1	A	92	SER	4.0
1	D	488	GLN	4.0
1	B	517	ASP	4.0
1	D	389	LYS	4.0
1	B	268	ALA	3.9
1	B	290	GLN	3.9
1	D	182	PHE	3.9
1	D	303	GLN	3.9
1	B	395	ALA	3.9
1	A	156	THR	3.9
1	D	370	GLN	3.8
1	D	489	ALA	3.8
1	C	96	VAL	3.8
1	B	264	SER	3.7
1	B	408	PHE	3.7
1	D	65	PRO	3.7
1	B	492	ARG	3.6
1	C	362	ASP	3.6
1	D	276	LEU	3.6
1	D	214	TYR	3.6
1	B	175	GLY	3.5
1	D	228	ALA	3.5
1	D	342	VAL	3.5
1	A	185	GLY	3.4
1	A	424	LYS	3.4
1	D	127	LEU	3.4
1	B	476	SER	3.4
1	D	265	GLY	3.4
1	B	493	PRO	3.3

Continued on next page...

Continued from previous page...

Mol	Chain	Res	Type	RSRZ
1	D	445	GLU	3.3
1	B	518	LEU	3.3
1	D	135	GLN	3.3
1	D	291	SER	3.3
1	B	554	ASP	3.3
1	C	576	LYS	3.2
1	D	425	ASP	3.2
1	B	292	GLY	3.2
1	C	55	ARG	3.2
1	B	490	GLU	3.2
1	D	253	GLY	3.1
1	D	439	ALA	3.1
1	B	420	TYR	3.1
1	D	495	TRP	3.1
1	D	224	THR	3.1
1	D	129	ALA	3.1
1	A	557	PHE	3.1
1	D	470	LEU	3.1
1	B	561	LYS	3.1
1	B	223	SER	3.1
1	D	548	ASN	3.1
1	B	396	GLU	3.0
1	C	610	ASN	3.0
1	D	211	THR	3.0
1	A	40	GLN	3.0
1	D	226	ASP	3.0
1	D	467	THR	3.0
1	B	291	SER	3.0
1	D	412	ASN	3.0
1	B	217	GLY	3.0
1	D	409	THR	3.0
1	D	575	SER	3.0
1	B	405	ALA	2.9
1	C	565	PHE	2.9
1	A	556	LYS	2.9
1	A	423	GLY	2.9
1	B	496	ALA	2.9
1	B	596	ASN	2.9
1	D	267	GLY	2.9
1	C	370	GLN	2.9
1	B	110	LEU	2.8
1	D	234	GLY	2.8

Continued on next page...

Continued from previous page...

Mol	Chain	Res	Type	RSRZ
1	D	591	ASP	2.8
1	B	392	GLU	2.8
1	D	396	GLU	2.8
1	D	492	ARG	2.8
1	C	53	GLY	2.8
1	C	128	GLU	2.8
1	B	550	PRO	2.8
1	C	567	GLU	2.8
1	D	131	ALA	2.8
1	B	588	ARG	2.8
1	C	182	PHE	2.8
1	D	184	HIS	2.8
1	B	571	SER	2.7
1	B	562	PRO	2.7
1	D	130	ALA	2.7
1	C	210	VAL	2.6
1	C	588	ARG	2.6
1	C	97	ARG	2.6
1	C	290	GLN	2.6
1	D	42	PRO	2.6
1	A	291	SER	2.6
1	C	265	GLY	2.6
1	A	421	PRO	2.6
1	D	270	CYS	2.6
1	D	319	ARG	2.6
1	D	381	GLY	2.6
1	D	438	TRP	2.6
1	C	531	SER	2.6
1	A	398	GLU	2.6
1	C	421	PRO	2.6
1	D	361	PRO	2.6
1	D	511	PRO	2.6
1	B	303	GLN	2.5
1	B	397	SER	2.5
1	C	562	PRO	2.5
1	B	265	GLY	2.5
1	B	557	PHE	2.5
1	D	268	ALA	2.5
1	C	234	GLY	2.5
1	D	344	PRO	2.5
1	D	231	GLY	2.5
1	D	77	PRO	2.5

Continued on next page...

Continued from previous page...

Mol	Chain	Res	Type	RSRZ
1	D	550	PRO	2.5
1	B	269	SER	2.5
1	B	407	ASP	2.5
1	C	372	GLU	2.5
1	A	265	GLY	2.5
1	D	610	ASN	2.5
1	B	560	THR	2.5
1	D	576	LYS	2.5
1	C	213	ASN	2.5
1	D	499	ALA	2.5
1	D	45	ASN	2.4
1	D	66	VAL	2.4
1	B	495	TRP	2.4
1	D	474	TYR	2.4
1	D	484	TYR	2.4
1	A	562	PRO	2.4
1	D	420	TYR	2.4
1	A	490	GLU	2.4
1	B	62	ILE	2.4
1	D	288	ILE	2.4
1	D	79	LEU	2.4
1	D	128	GLU	2.4
1	D	60	ASN	2.4
1	C	329	LEU	2.4
1	B	263	GLY	2.4
1	D	331	ARG	2.4
1	D	422	GLU	2.4
1	D	501	GLY	2.4
1	D	549	GLN	2.3
1	C	292	GLY	2.3
1	D	400	GLY	2.3
1	D	490	GLU	2.3
1	D	573	PHE	2.3
1	C	268	ALA	2.3
1	D	569	VAL	2.3
1	C	371	GLY	2.3
1	B	494	GLU	2.3
1	C	361	PRO	2.3
1	A	135	GLN	2.3
1	D	61	GLU	2.3
1	A	263	GLY	2.3
1	A	585	LEU	2.3

Continued on next page...

Continued from previous page...

Mol	Chain	Res	Type	RSRZ
1	B	112	GLY	2.2
1	C	184	HIS	2.3
1	C	269	SER	2.3
1	D	518	LEU	2.2
1	C	558	ILE	2.2
1	A	264	SER	2.2
1	D	334	SER	2.2
1	B	185	GLY	2.2
1	D	204	TYR	2.2
1	D	368	MET	2.2
1	C	134	VAL	2.2
1	B	267	GLY	2.2
1	D	58	LEU	2.2
1	D	362	ASP	2.2
1	D	277	SER	2.2
1	D	287	ALA	2.2
1	D	313	ALA	2.2
1	C	381	GLY	2.2
1	D	269	SER	2.2
1	B	515	ALA	2.2
1	D	197	ASP	2.2
1	D	502	ASP	2.2
1	B	216	LEU	2.2
1	D	220	GLY	2.1
1	C	150	THR	2.1
1	D	136	ASN	2.1
1	D	517	ASP	2.1
1	C	522	ASN	2.1
1	D	500	HIS	2.1
1	D	252	PHE	2.1
1	C	226	ASP	2.1
1	D	181	LEU	2.1
1	D	123	PHE	2.1
1	D	251	HIS	2.1
1	D	87	PRO	2.1
1	C	369	GLN	2.1
1	D	62	ILE	2.1
1	D	316	GLY	2.1
1	D	215	ARG	2.1
1	A	495	TRP	2.1
1	D	609	HIS	2.1
1	D	262	PHE	2.1

Continued on next page...

Continued from previous page...

Mol	Chain	Res	Type	RSRZ
1	A	134	VAL	2.1
1	B	280	SER	2.1
1	A	471	HIS	2.1
1	B	111	HIS	2.1
1	C	373	PHE	2.0
1	B	355	VAL	2.0
1	C	87	PRO	2.0
1	B	174	SER	2.0
1	B	564	ARG	2.0
1	B	474	TYR	2.0
1	C	110	LEU	2.0
1	C	225	GLY	2.0
1	A	155	LEU	2.0
1	D	110	LEU	2.0
1	B	73	PRO	2.0
1	B	373	PHE	2.0
1	A	320	GLU	2.0

6.2 Non-standard residues in protein, DNA, RNA chains [i](#)

There are no non-standard protein/DNA/RNA residues in this entry.

6.3 Carbohydrates [i](#)

There are no carbohydrates in this entry.

6.4 Ligands [i](#)

In the following table, the Atoms column lists the number of modelled atoms in the group and the number defined in the chemical component dictionary. LLDF column lists the quality of electron density of the group with respect to its neighbouring residues in protein, DNA or RNA chains. The B-factors column lists the minimum, median, 95th percentile and maximum values of B factors of atoms in the group. The column labelled 'Q< 0.9' lists the number of atoms with occupancy less than 0.9.

Mol	Type	Chain	Res	Atoms	RSCC	RSR	LLDF	B-factors(Å ²)	Q<0.9
2	NAG	A	710	14/15	0.44	0.68	3.34	174,176,176,176	0
3	MAN	B	804	11/12	0.92	0.36	1.70	89,91,93,95	0
2	NAG	B	802	14/15	0.94	0.29	1.06	89,90,93,93	0
2	NAG	A	701	14/15	0.82	0.34	0.76	136,138,140,144	0

Continued on next page...

Continued from previous page...

Mol	Type	Chain	Res	Atoms	RSCC	RSR	LLDF	B-factors(\AA^2)	Q<0.9
2	NAG	B	801	14/15	0.90	0.25	-0.17	95,99,101,103	0
4	BMA	B	803	11/12	0.93	0.19	-0.29	87,88,91,94	0
3	MAN	A	703	11/12	0.56	0.40	-	155,157,157,157	0
3	MAN	B	807	11/12	0.73	0.47	-	112,113,113,114	0
2	NAG	B	810	14/15	0.66	0.57	-	142,144,144,144	0
3	MAN	B	806	11/12	0.85	0.38	-	99,105,108,110	0
3	MAN	B	805	11/12	0.81	0.37	-	112,113,115,115	0
2	NAG	A	702	14/15	0.83	0.45	-	148,149,151,153	0

6.5 Other polymers [i](#)

There are no such residues in this entry.