



# Full wwPDB X-ray Structure Validation Report ⓘ

Feb 13, 2017 – 08:03 pm GMT

PDB ID : 2BT3  
Title : AGAO IN COMPLEX WITH RUTHENIUM-C4-WIRE AT 1.73  
ANGSTROMS  
Authors : Langley, D.B.; Duff, A.P.; Freeman, H.C.; Guss, J.M.; Juda, G.A.; Dooley,  
D.M.; Contakes, S.M.; Halpern-Manners, N.W.; Dunn, A.R.; Gray, H.B.  
Deposited on : 2005-05-26  
Resolution : 1.73 Å(reported)

This is a Full wwPDB X-ray Structure Validation Report for a publicly released PDB entry.

We welcome your comments at [validation@mail.wwpdb.org](mailto:validation@mail.wwpdb.org)

A user guide is available at

<http://wwpdb.org/validation/2016/XrayValidationReportHelp>

with specific help available everywhere you see the ⓘ symbol.

---

The following versions of software and data (see [references ⓘ](#)) were used in the production of this report:

MolProbity : 4.02b-467  
Mogul : 1.7.2 (RC1), CSD as538be (2017)  
Xtriage (Phenix) : 1.9-1692  
EDS : trunk28620  
Percentile statistics : 20161228.v01 (using entries in the PDB archive December 28th 2016)  
Refmac : 5.8.0135  
CCP4 : 6.5.0  
Ideal geometry (proteins) : Engh & Huber (2001)  
Ideal geometry (DNA, RNA) : Parkinson et al. (1996)  
Validation Pipeline (wwPDB-VP) : recalc28949

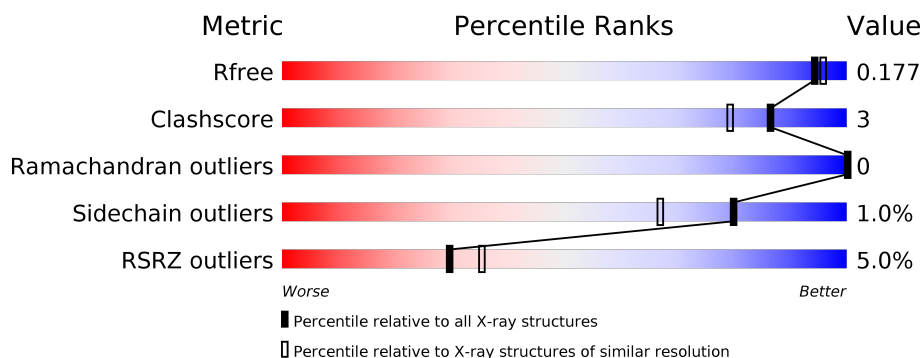
# 1 Overall quality at a glance

The following experimental techniques were used to determine the structure:

*X-RAY DIFFRACTION*

The reported resolution of this entry is 1.73 Å.

Percentile scores (ranging between 0-100) for global validation metrics of the entry are shown in the following graphic. The table shows the number of entries on which the scores are based.



Metric	Whole archive (#Entries)	Similar resolution (#Entries, resolution range(Å))
$R_{free}$	100719	2694 (1.76-1.72)
Clashscore	112137	2854 (1.76-1.72)
Ramachandran outliers	110173	2824 (1.76-1.72)
Sidechain outliers	110143	2824 (1.76-1.72)
RSRZ outliers	101464	2705 (1.76-1.72)

The table below summarises the geometric issues observed across the polymeric chains and their fit to the electron density. The red, orange, yellow and green segments on the lower bar indicate the fraction of residues that contain outliers for  $\geq 3$ , 2, 1 and 0 types of geometric quality criteria. A grey segment represents the fraction of residues that are not modelled. The numeric value for each fraction is indicated below the corresponding segment, with a dot representing fractions  $\leq 5\%$ . The upper red bar (where present) indicates the fraction of residues that have poor fit to the electron density. The numeric value is given above the bar.

Mol	Chain	Length	Quality of chain
1	A	646	<div> <div>5%</div> <div>91%</div> <div>5%</div> </div>

The following table lists non-polymeric compounds, carbohydrate monomers and non-standard residues in protein, DNA, RNA chains that are outliers for geometric or electron-density-fit criteria:

Mol	Type	Chain	Res	Chirality	Geometry	Clashes	Electron density
4	R4A	A	1631[A]	X	-	-	X
4	R4A	A	1631[B]	X	-	-	X

*Continued on next page...*

*Continued from previous page...*

Mol	Type	Chain	Res	Chirality	Geometry	Clashes	Electron density
5	SO4	A	1632	-	-	-	X
6	GOL	A	1635	-	-	-	X
6	GOL	A	1636	-	-	-	X
6	GOL	A	1637	-	-	-	X
6	GOL	A	1639	-	-	-	X
6	GOL	A	1640	-	-	-	X

## 2 Entry composition

There are 7 unique types of molecules in this entry. The entry contains 10157 atoms, of which 4604 are hydrogens and 0 are deuteriums.

In the tables below, the ZeroOcc column contains the number of atoms modelled with zero occupancy, the AltConf column contains the number of residues with at least one atom in alternate conformation and the Trace column contains the number of residues modelled with at most 2 atoms.

- Molecule 1 is a protein called PHENYLETHYLAMINE OXIDASE.

Mol	Chain	Residues	Atoms						ZeroOcc	AltConf	Trace
1	A	620	Total	C	H	N	O	S	0	8	0
			9397	3093	4502	856	935	11			

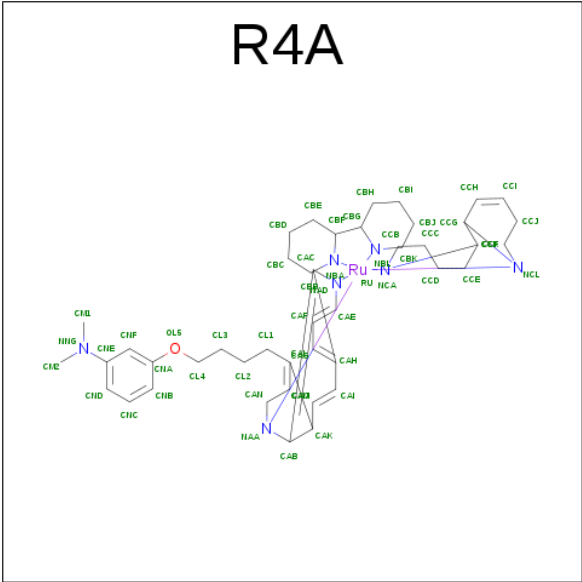
- Molecule 2 is COPPER (II) ION (three-letter code: CU) (formula: Cu).

Mol	Chain	Residues	Atoms		ZeroOcc	AltConf
2	A	1	Total	Cu	0	0
			1	1		

- Molecule 3 is SODIUM ION (three-letter code: NA) (formula: Na).

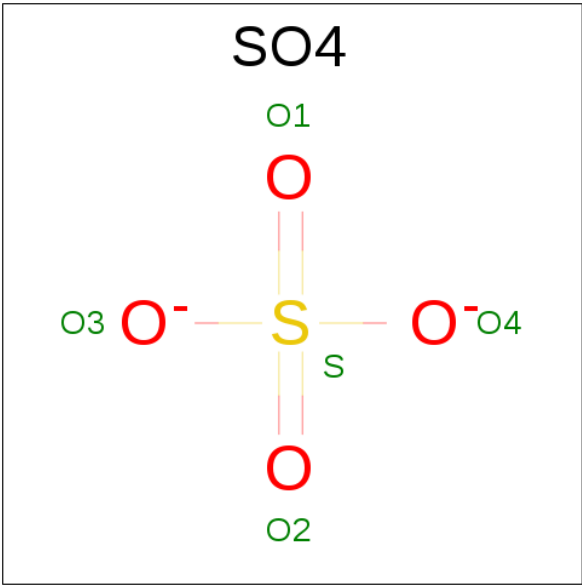
Mol	Chain	Residues	Atoms		ZeroOcc	AltConf
3	A	1	Total	Na	0	0
			1	1		

- Molecule 4 is BIS[1H,1'H-2,2'-BIPYRIDINATO(2-)-KAPPA 2 N 1 ,N 1' ]{3-[4-(1,10-DIHYDRO-1,10-PHENANTHROLIN-4-YL-KAPPA 2 N 1 ,N 10 )BUTOXY]-N,N-DIMETHYLANILINATO(2-)}RUTHENIUM (three-letter code: R4A) (formula: C<sub>44</sub>H<sub>61</sub>N<sub>7</sub>ORu).



Mol	Chain	Residues	Atoms					ZeroOcc	AltConf
4	A	1	Total	C	H	N	O	Ru	
			169	80	72	13	2	2	0
									1

- Molecule 5 is SULFATE ION (three-letter code: SO4) (formula: O<sub>4</sub>S).



Mol	Chain	Residues	Atoms			ZeroOcc	AltConf
5	A	1	Total	O	S	0	0
			5	4	1		
5	A	1	Total	O	S	0	0
			5	4	1		
5	A	1	Total	O	S	0	0
			5	4	1		

- Molecule 6 is GLYCEROL (three-letter code: GOL) (formula:  $C_3H_8O_3$ ).



Mol	Chain	Residues	Atoms				ZeroOcc	AltConf
6	A	1	Total	C	H	O	0	0
			11	3	5	3		
6	A	1	Total	C	H	O	0	0
			11	3	5	3		
6	A	1	Total	C	H	O	0	0
			11	3	5	3		
6	A	1	Total	C	H	O	0	0
			11	3	5	3		
6	A	1	Total	C	H	O	0	0
			11	3	5	3		

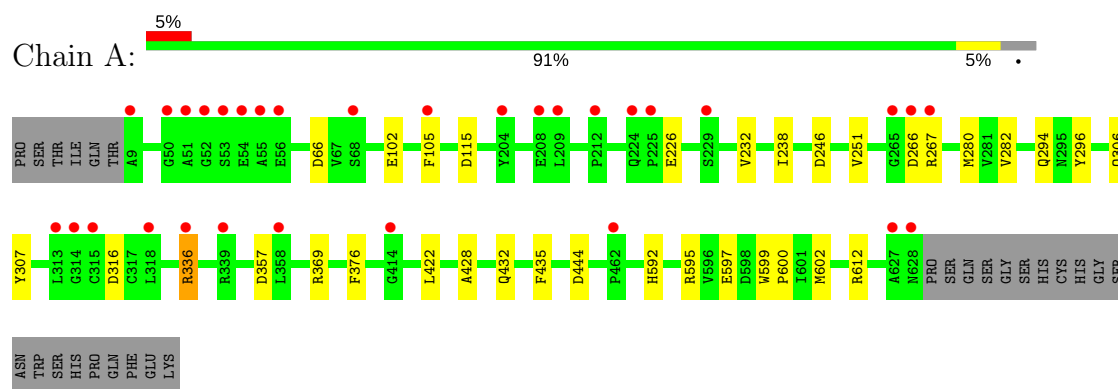
- Molecule 7 is water.

Mol	Chain	Residues	Atoms		ZeroOcc	AltConf
7	A	508	Total	O	0	0
			508	508		

### 3 Residue-property plots [i](#)

These plots are drawn for all protein, RNA and DNA chains in the entry. The first graphic for a chain summarises the proportions of the various outlier classes displayed in the second graphic. The second graphic shows the sequence view annotated by issues in geometry and electron density. Residues are color-coded according to the number of geometric quality criteria for which they contain at least one outlier: green = 0, yellow = 1, orange = 2 and red = 3 or more. A red dot above a residue indicates a poor fit to the electron density ( $RSRZ > 2$ ). Stretches of 2 or more consecutive residues without any outlier are shown as a green connector. Residues present in the sample, but not in the model, are shown in grey.

#### • Molecule 1: PHENYLETHYLAMINE OXIDASE



## 4 Data and refinement statistics

Property	Value	Source
Space group	C 1 2 1	Depositor
Cell constants a, b, c, $\alpha$ , $\beta$ , $\gamma$	158.06Å 62.91Å 92.10Å 90.00° 112.11° 90.00°	Depositor
Resolution (Å)	15.02 – 1.73 15.02 – 1.73	Depositor EDS
% Data completeness (in resolution range)	94.5 (15.02-1.73) 94.5 (15.02-1.73)	Depositor EDS
$R_{merge}$	0.04	Depositor
$R_{sym}$	(Not available)	Depositor
$\langle I/\sigma(I) \rangle$ <sup>1</sup>	2.18 (at 1.73Å)	Xtriage
Refinement program	REFMAC 5.1.24	Depositor
R, $R_{free}$	0.154 , 0.171 0.163 , 0.177	Depositor DCC
$R_{free}$ test set	4106 reflections (5.27%)	DCC
Wilson B-factor (Å <sup>2</sup> )	20.0	Xtriage
Anisotropy	0.668	Xtriage
Bulk solvent $k_{sol}$ (e/Å <sup>3</sup> ), $B_{sol}$ (Å <sup>2</sup> )	0.45 , 53.5	EDS
L-test for twinning <sup>2</sup>	$\langle  L  \rangle = 0.49$ , $\langle L^2 \rangle = 0.33$	Xtriage
Estimated twinning fraction	No twinning to report.	Xtriage
$F_o, F_c$ correlation	0.97	EDS
Total number of atoms	10157	wwPDB-VP
Average B, all atoms (Å <sup>2</sup> )	15.0	wwPDB-VP

Xtriage's analysis on translational NCS is as follows: *The largest off-origin peak in the Patterson function is 4.90% of the height of the origin peak. No significant pseudotranslation is detected.*

<sup>1</sup>Intensities estimated from amplitudes.

<sup>2</sup>Theoretical values of  $\langle |L| \rangle$ ,  $\langle L^2 \rangle$  for acentric reflections are 0.5, 0.333 respectively for untwinned datasets, and 0.375, 0.2 for perfectly twinned datasets.



## 5 Model quality

### 5.1 Standard geometry

Bond lengths and bond angles in the following residue types are not validated in this section: GOL, R4A, NA, SO4, TPQ, CU

The Z score for a bond length (or angle) is the number of standard deviations the observed value is removed from the expected value. A bond length (or angle) with  $|Z| > 5$  is considered an outlier worth inspection. RMSZ is the root-mean-square of all Z scores of the bond lengths (or angles).

Mol	Chain	Bond lengths		Bond angles	
		RMSZ	$\# Z  > 5$	RMSZ	$\# Z  > 5$
1	A	0.61	3/5037 (0.1%)	0.78	7/6858 (0.1%)

All (3) bond length outliers are listed below:

Mol	Chain	Res	Type	Atoms	Z	Observed(Å)	Ideal(Å)
1	A	226	GLU	CD-OE2	22.33	1.50	1.25
1	A	226	GLU	CD-OE1	10.64	1.37	1.25
1	A	226	GLU	C-N	7.70	1.47	1.33

All (7) bond angle outliers are listed below:

Mol	Chain	Res	Type	Atoms	Z	Observed(°)	Ideal(°)
1	A	316	ASP	CB-CG-OD2	6.05	123.75	118.30
1	A	357	ASP	CB-CG-OD2	5.54	123.28	118.30
1	A	66	ASP	CB-CG-OD2	5.36	123.13	118.30
1	A	246	ASP	CB-CG-OD2	5.28	123.05	118.30
1	A	115	ASP	CB-CG-OD2	5.07	122.86	118.30
1	A	266	ASP	CB-CG-OD2	5.05	122.84	118.30
1	A	612	ARG	NE-CZ-NH1	5.01	122.81	120.30

There are no chirality outliers.

There are no planarity outliers.

### 5.2 Too-close contacts

In the following table, the Non-H and H(model) columns list the number of non-hydrogen atoms and hydrogen atoms in the chain respectively. The H(added) column lists the number of hydrogen atoms added and optimized by MolProbity. The Clashes column lists the number of clashes within the asymmetric unit, whereas Symm-Clashes lists symmetry related clashes.

Mol	Chain	Non-H	H(model)	H(added)	Clashes	Symm-Clashes
1	A	4895	4502	4711	24	0
2	A	1	0	0	0	0
3	A	1	0	0	0	0
4	A	97	72	92	10	0
5	A	15	0	0	0	0
6	A	36	30	48	0	0
7	A	508	0	0	0	0
All	All	5553	4604	4851	25	0

The all-atom clashscore is defined as the number of clashes found per 1000 atoms (including hydrogen atoms). The all-atom clashscore for this structure is 3.

All (25) close contacts within the same asymmetric unit are listed below, sorted by their clash magnitude.

Atom-1	Atom-2	Interatomic distance (Å)	Clash overlap (Å)
1:A:294[A]:GLN:HG3	1:A:296:TYR:CZ	2.26	0.70
1:A:307:TYR:CE1	4:A:1631[B]:R4A:CAM	2.78	0.66
1:A:102:GLU:HA	1:A:105:PHE:CE2	2.33	0.64
1:A:336:ARG:NH1	4:A:1631[A]:R4A:HCE	2.17	0.59
1:A:599:TRP:CD2	1:A:600:PRO:HA	2.38	0.59
1:A:307:TYR:CE1	4:A:1631[B]:R4A:HAM	2.40	0.57
1:A:294[A]:GLN:HG3	1:A:296:TYR:CE2	2.43	0.54
1:A:102:GLU:OE1	4:A:1631[B]:R4A:HBI1	2.09	0.52
1:A:102:GLU:OE2	4:A:1631[A]:R4A:HCC1	2.11	0.50
1:A:422:LEU:HD11	1:A:428:ALA:HB2	1.94	0.49
1:A:105:PHE:CE2	4:A:1631[A]:R4A:HL21	2.47	0.49
1:A:251:VAL:HG22	1:A:306:GLN:HB3	1.94	0.48
1:A:105:PHE:CD2	4:A:1631[A]:R4A:HL21	2.49	0.47
1:A:280[B]:MET:HG3	1:A:435:PHE:CE2	2.50	0.47
1:A:105:PHE:HE2	1:A:307:TYR:OH	1.98	0.47
1:A:280[B]:MET:HG3	1:A:435:PHE:CD2	2.50	0.46
1:A:105:PHE:CE2	1:A:307:TYR:OH	2.68	0.46
1:A:595:ARG:HG3	1:A:597:GLU:HB2	1.97	0.46
1:A:232:VAL:HG22	1:A:238:ILE:CD1	2.46	0.44
1:A:592:HIS:HE1	1:A:602[A]:MET:SD	2.41	0.44
4:A:1631[B]:R4A:HBK	4:A:1631[B]:R4A:CCF	2.50	0.42
1:A:294[A]:GLN:CG	1:A:296:TYR:CE2	3.02	0.42
1:A:282:VAL:HA	1:A:432:GLN:O	2.21	0.41
1:A:307:TYR:CZ	4:A:1631[B]:R4A:HAM	2.56	0.41
1:A:102:GLU:OE1	4:A:1631[B]:R4A:HBH1	2.20	0.40

There are no symmetry-related clashes.

## 5.3 Torsion angles [i](#)

### 5.3.1 Protein backbone [i](#)

In the following table, the Percentiles column shows the percent Ramachandran outliers of the chain as a percentile score with respect to all X-ray entries followed by that with respect to entries of similar resolution.

The Analysed column shows the number of residues for which the backbone conformation was analysed, and the total number of residues.

Mol	Chain	Analysed	Favoured	Allowed	Outliers	Percentiles	
1	A	625/646 (97%)	606 (97%)	19 (3%)	0	100	100

There are no Ramachandran outliers to report.

### 5.3.2 Protein sidechains [i](#)

In the following table, the Percentiles column shows the percent sidechain outliers of the chain as a percentile score with respect to all X-ray entries followed by that with respect to entries of similar resolution.

The Analysed column shows the number of residues for which the sidechain conformation was analysed, and the total number of residues.

Mol	Chain	Analysed	Rotameric	Outliers	Percentiles	
1	A	521/537 (97%)	516 (99%)	5 (1%)	80	67

All (5) residues with a non-rotameric sidechain are listed below:

Mol	Chain	Res	Type
1	A	267	ARG
1	A	336	ARG
1	A	369	ARG
1	A	376	PHE
1	A	444	ASP

Some sidechains can be flipped to improve hydrogen bonding and reduce clashes. There are no such sidechains identified.

### 5.3.3 RNA [i](#)

There are no RNA molecules in this entry.

## 5.4 Non-standard residues in protein, DNA, RNA chains ⓘ

1 non-standard protein/DNA/RNA residue is modelled in this entry.

In the following table, the Counts columns list the number of bonds (or angles) for which Mogul statistics could be retrieved, the number of bonds (or angles) that are observed in the model and the number of bonds (or angles) that are defined in the chemical component dictionary. The Link column lists molecule types, if any, to which the group is linked. The Z score for a bond length (or angle) is the number of standard deviations the observed value is removed from the expected value. A bond length (or angle) with  $|Z| > 2$  is considered an outlier worth inspection. RMSZ is the root-mean-square of all Z scores of the bond lengths (or angles).

Mol	Type	Chain	Res	Link	Bond lengths			Bond angles		
					Counts	RMSZ	$\# Z  > 2$	Counts	RMSZ	$\# Z  > 2$
1	TPQ	A	382	1	14,14,15	1.41	2 (14%)	17,19,21	1.78	2 (11%)

In the following table, the Chirals column lists the number of chiral outliers, the number of chiral centers analysed, the number of these observed in the model and the number defined in the chemical component dictionary. Similar counts are reported in the Torsion and Rings columns. '-' means no outliers of that kind were identified.

Mol	Type	Chain	Res	Link	Chirals	Torsions	Rings
1	TPQ	A	382	1	-	0/4/22/24	0/1/1/1

All (2) bond length outliers are listed below:

Mol	Chain	Res	Type	Atoms	Z	Observed(Å)	Ideal(Å)
1	A	382	TPQ	O4-C4	-2.36	1.27	1.33
1	A	382	TPQ	C3-C4	3.34	1.40	1.35

All (2) bond angle outliers are listed below:

Mol	Chain	Res	Type	Atoms	Z	Observed(°)	Ideal(°)
1	A	382	TPQ	CB-CA-C	-5.21	101.38	111.41
1	A	382	TPQ	C6-C1-C2	2.37	120.45	118.54

There are no chirality outliers.

There are no torsion outliers.

There are no ring outliers.

No monomer is involved in short contacts.

## 5.5 Carbohydrates [i](#)

There are no carbohydrates in this entry.

## 5.6 Ligand geometry [i](#)

Of 13 ligands modelled in this entry, 2 are monoatomic - leaving 11 for Mogul analysis.

In the following table, the Counts columns list the number of bonds (or angles) for which Mogul statistics could be retrieved, the number of bonds (or angles) that are observed in the model and the number of bonds (or angles) that are defined in the chemical component dictionary. The Link column lists molecule types, if any, to which the group is linked. The Z score for a bond length (or angle) is the number of standard deviations the observed value is removed from the expected value. A bond length (or angle) with  $|Z| > 2$  is considered an outlier worth inspection. RMSZ is the root-mean-square of all Z scores of the bond lengths (or angles).

Mol	Type	Chain	Res	Link	Bond lengths			Bond angles		
					Counts	RMSZ	$\# Z  > 2$	Counts	RMSZ	$\# Z  > 2$
4	R4A	A	1631[A]	-	53,63,63	4.35	25 (47%)	49,101,101	2.89	25 (51%)
4	R4A	A	1631[B]	-	53,63,63	4.24	23 (43%)	49,101,101	3.01	25 (51%)
5	SO4	A	1632	-	4,4,4	0.14	0	6,6,6	0.46	0
5	SO4	A	1633	-	4,4,4	0.14	0	6,6,6	0.13	0
5	SO4	A	1634	-	4,4,4	0.15	0	6,6,6	0.11	0
6	GOL	A	1635	-	5,5,5	0.25	0	5,5,5	0.35	0
6	GOL	A	1636	-	5,5,5	0.30	0	5,5,5	0.26	0
6	GOL	A	1637	-	5,5,5	0.29	0	5,5,5	0.38	0
6	GOL	A	1638	-	5,5,5	0.31	0	5,5,5	0.19	0
6	GOL	A	1639	-	5,5,5	0.41	0	5,5,5	0.37	0
6	GOL	A	1640	-	5,5,5	0.21	0	5,5,5	0.51	0

In the following table, the Chirals column lists the number of chiral outliers, the number of chiral centers analysed, the number of these observed in the model and the number defined in the chemical component dictionary. Similar counts are reported in the Torsion and Rings columns. '-' means no outliers of that kind were identified.

Mol	Type	Chain	Res	Link	Chirals	Torsions	Rings
4	R4A	A	1631[A]	-	5/5/19/19	0/12/150/150	0/10/11/11
4	R4A	A	1631[B]	-	5/5/19/19	0/12/150/150	0/10/11/11
5	SO4	A	1632	-	-	0/0/0/0	0/0/0/0
5	SO4	A	1633	-	-	0/0/0/0	0/0/0/0
5	SO4	A	1634	-	-	0/0/0/0	0/0/0/0
6	GOL	A	1635	-	-	0/4/4/4	0/0/0/0
6	GOL	A	1636	-	-	0/4/4/4	0/0/0/0
6	GOL	A	1637	-	-	0/4/4/4	0/0/0/0

*Continued on next page...*

*Continued from previous page...*

Mol	Type	Chain	Res	Link	Chirals	Torsions	Rings
6	GOL	A	1638	-	-	0/4/4/4	0/0/0/0
6	GOL	A	1639	-	-	0/4/4/4	0/0/0/0
6	GOL	A	1640	-	-	0/4/4/4	0/0/0/0

All (48) bond length outliers are listed below:

Mol	Chain	Res	Type	Atoms	Z	Observed(Å)	Ideal(Å)
4	A	1631[A]	R4A	CCB-NCA	-14.61	1.27	1.48
4	A	1631[A]	R4A	CBB-NBA	-13.92	1.28	1.48
4	A	1631[B]	R4A	CCB-NCA	-13.87	1.28	1.48
4	A	1631[B]	R4A	CBB-NBA	-13.53	1.28	1.48
4	A	1631[A]	R4A	CCK-NCL	-9.81	1.34	1.48
4	A	1631[B]	R4A	CCK-NCL	-9.59	1.34	1.48
4	A	1631[A]	R4A	CBK-NBL	-9.56	1.34	1.48
4	A	1631[B]	R4A	CBK-NBL	-9.03	1.35	1.48
4	A	1631[B]	R4A	CBD-CBE	-7.75	1.32	1.53
4	A	1631[A]	R4A	CBD-CBE	-7.62	1.33	1.53
4	A	1631[B]	R4A	CCD-CCE	-7.61	1.33	1.53
4	A	1631[A]	R4A	CCD-CCE	-7.56	1.33	1.53
4	A	1631[A]	R4A	CBH-CBG	-6.18	1.39	1.53
4	A	1631[B]	R4A	CBH-CBG	-6.09	1.39	1.53
4	A	1631[B]	R4A	CBI-CBH	-5.11	1.39	1.53
4	A	1631[A]	R4A	CBI-CBH	-5.11	1.39	1.53
4	A	1631[A]	R4A	CCB-CCC	-4.82	1.33	1.51
4	A	1631[B]	R4A	CBB-CBC	-4.71	1.34	1.51
4	A	1631[A]	R4A	CBB-CBC	-4.71	1.34	1.51
4	A	1631[B]	R4A	CCB-CCC	-4.63	1.34	1.51
4	A	1631[B]	R4A	CAK-CAL	-4.09	1.48	1.54
4	A	1631[A]	R4A	CCK-CCJ	-4.00	1.40	1.51
4	A	1631[B]	R4A	CCK-CCJ	-3.93	1.40	1.51
4	A	1631[B]	R4A	CBK-CBJ	-3.17	1.39	1.51
4	A	1631[A]	R4A	CAK-CAL	-3.16	1.50	1.54
4	A	1631[B]	R4A	CCG-CCF	-3.09	1.49	1.54
4	A	1631[B]	R4A	CBI-CBJ	-3.02	1.39	1.51
4	A	1631[A]	R4A	CBK-CBJ	-2.97	1.40	1.51
4	A	1631[A]	R4A	CBI-CBJ	-2.80	1.40	1.51
4	A	1631[A]	R4A	CCG-CCF	-2.57	1.50	1.54
4	A	1631[B]	R4A	CCJ-CCI	-2.56	1.39	1.48
4	A	1631[A]	R4A	CCJ-CCI	-2.52	1.40	1.48
4	A	1631[A]	R4A	CCE-CCF	-2.31	1.48	1.53
4	A	1631[A]	R4A	CAN-CAM	-2.22	1.40	1.48
4	A	1631[A]	R4A	CBE-CBF	-2.18	1.48	1.53

*Continued on next page...*

*Continued from previous page...*

Mol	Chain	Res	Type	Atoms	Z	Observed(Å)	Ideal(Å)
4	A	1631[B]	R4A	CAN-CAM	-2.17	1.41	1.48
4	A	1631[B]	R4A	CCE-CCF	-2.01	1.48	1.53
4	A	1631[A]	R4A	CAC-NAD	2.10	1.40	1.37
4	A	1631[B]	R4A	CCH-CCI	2.72	1.39	1.32
4	A	1631[A]	R4A	CCH-CCI	2.78	1.39	1.32
4	A	1631[A]	R4A	CAM-CAL	3.39	1.40	1.33
4	A	1631[B]	R4A	CAM-CAL	3.44	1.40	1.33
4	A	1631[B]	R4A	CAC-CAH	3.54	1.46	1.42
4	A	1631[A]	R4A	CAC-CAH	3.67	1.46	1.42
4	A	1631[B]	R4A	CAC-CAB	3.93	1.45	1.39
4	A	1631[A]	R4A	CAC-CAB	4.67	1.46	1.39
4	A	1631[B]	R4A	CAI-CAJ	5.30	1.41	1.33
4	A	1631[A]	R4A	CAI-CAJ	5.45	1.41	1.33

All (50) bond angle outliers are listed below:

Mol	Chain	Res	Type	Atoms	Z	Observed(°)	Ideal(°)
4	A	1631[A]	R4A	CAG-CAH-CAC	-3.79	115.73	118.75
4	A	1631[B]	R4A	CAG-CAH-CAC	-3.52	115.94	118.75
4	A	1631[B]	R4A	CAC-CAH-CAI	-3.31	118.07	124.08
4	A	1631[A]	R4A	CAC-CAH-CAI	-3.17	118.32	124.08
4	A	1631[B]	R4A	CCJ-CCI-CCH	-2.15	119.81	123.62
4	A	1631[A]	R4A	CAF-CAE-NAD	-2.12	119.95	122.70
4	A	1631[A]	R4A	CL1-CAL-CAM	-2.11	118.19	125.74
4	A	1631[B]	R4A	CAE-CAF-CAG	2.05	122.54	119.44
4	A	1631[A]	R4A	CCJ-CCK-NCL	2.18	119.47	111.94
4	A	1631[A]	R4A	CAE-CAF-CAG	2.19	122.73	119.44
4	A	1631[A]	R4A	CAG-CAH-CAI	2.23	125.95	121.31
4	A	1631[B]	R4A	CAG-CAH-CAI	2.25	125.99	121.31
4	A	1631[B]	R4A	CCJ-CCK-NCL	2.29	119.84	111.94
4	A	1631[B]	R4A	CAK-CAL-CAM	2.39	117.28	112.14
4	A	1631[B]	R4A	CL4-OL5-CNA	2.65	124.92	117.90
4	A	1631[B]	R4A	CBC-CBD-CBE	2.65	116.91	111.42
4	A	1631[A]	R4A	CCC-CCD-CCE	2.71	117.02	111.42
4	A	1631[A]	R4A	CAK-CAL-CAM	2.78	118.12	112.14
4	A	1631[B]	R4A	CCC-CCD-CCE	2.78	117.16	111.42
4	A	1631[A]	R4A	CBF-CBG-NBL	2.96	113.50	109.07
4	A	1631[A]	R4A	CBC-CBD-CBE	2.97	117.57	111.42
4	A	1631[B]	R4A	CCD-CCE-CCF	3.62	117.83	111.22
4	A	1631[A]	R4A	CBD-CBE-CBF	3.63	117.85	111.22
4	A	1631[A]	R4A	CCD-CCE-CCF	3.78	118.13	111.22
4	A	1631[A]	R4A	CBI-CBH-CBG	3.87	118.30	111.22

*Continued on next page...*

*Continued from previous page...*

Mol	Chain	Res	Type	Atoms	Z	Observed(°)	Ideal(°)
4	A	1631[B]	R4A	CBF-CBG-NBL	3.88	114.87	109.07
4	A	1631[B]	R4A	CBD-CBE-CBF	3.92	118.39	111.22
4	A	1631[B]	R4A	CBJ-CBI-CBH	4.09	119.88	111.42
4	A	1631[A]	R4A	CBJ-CBK-NBL	4.09	119.67	113.00
4	A	1631[B]	R4A	CBI-CBH-CBG	4.25	118.98	111.22
4	A	1631[A]	R4A	CBJ-CBI-CBH	4.29	120.28	111.42
4	A	1631[A]	R4A	CAJ-CAK-CAB	4.40	117.75	108.64
4	A	1631[B]	R4A	CBJ-CBK-NBL	4.53	120.38	113.00
4	A	1631[A]	R4A	CAL-CAK-CAB	4.66	114.27	108.46
4	A	1631[B]	R4A	CAL-CAK-CAB	4.71	114.32	108.46
4	A	1631[B]	R4A	CAJ-CAK-CAB	4.75	118.49	108.64
4	A	1631[B]	R4A	CCG-CCF-NCA	4.76	116.18	109.07
4	A	1631[A]	R4A	CCG-CCF-NCA	4.91	116.41	109.07
4	A	1631[A]	R4A	CBG-CBF-NBA	5.04	116.61	109.07
4	A	1631[A]	R4A	CBB-CBC-CBD	5.08	119.30	111.43
4	A	1631[A]	R4A	CCB-CCC-CCD	5.25	119.58	111.43
4	A	1631[B]	R4A	CBB-CBC-CBD	5.28	119.62	111.43
4	A	1631[B]	R4A	CCB-CCC-CCD	5.34	119.72	111.43
4	A	1631[A]	R4A	CCC-CCB-NCA	5.46	121.89	113.00
4	A	1631[A]	R4A	CBC-CBB-NBA	5.59	122.12	113.00
4	A	1631[A]	R4A	CBK-CBJ-CBI	5.62	120.15	111.43
4	A	1631[B]	R4A	CBG-CBF-NBA	5.67	117.54	109.07
4	A	1631[B]	R4A	CCC-CCB-NCA	5.71	122.31	113.00
4	A	1631[B]	R4A	CBK-CBJ-CBI	5.74	120.33	111.43
4	A	1631[B]	R4A	CBC-CBB-NBA	6.16	123.05	113.00

All (10) chirality outliers are listed below:

Mol	Chain	Res	Type	Atom
4	A	1631[A]	R4A	CAK
4	A	1631[A]	R4A	CBG
4	A	1631[A]	R4A	CCF
4	A	1631[A]	R4A	CBF
4	A	1631[A]	R4A	CCG
4	A	1631[B]	R4A	CAK
4	A	1631[B]	R4A	CBG
4	A	1631[B]	R4A	CCF
4	A	1631[B]	R4A	CBF
4	A	1631[B]	R4A	CCG

There are no torsion outliers.

There are no ring outliers.



2 monomers are involved in 10 short contacts:

Mol	Chain	Res	Type	Clashes	Symm-Clashes
4	A	1631[A]	R4A	4	0
4	A	1631[B]	R4A	6	0

## 5.7 Other polymers [i](#)

There are no such residues in this entry.

## 5.8 Polymer linkage issues [i](#)

There are no chain breaks in this entry.

## 6 Fit of model and data ⓘ

### 6.1 Protein, DNA and RNA chains ⓘ

In the following table, the column labelled ‘#RSRZ > 2’ contains the number (and percentage) of RSRZ outliers, followed by percent RSRZ outliers for the chain as percentile scores relative to all X-ray entries and entries of similar resolution. The OWAB column contains the minimum, median, 95<sup>th</sup> percentile and maximum values of the occupancy-weighted average B-factor per residue. The column labelled ‘Q < 0.9’ lists the number of (and percentage) of residues with an average occupancy less than 0.9.

Mol	Chain	Analysed	<RSRZ>	#RSRZ>2	OWAB(Å <sup>2</sup> )	Q<0.9
1	A	619/646 (95%)	-0.25	31 (5%) 30 35	5, 12, 28, 62	0

All (31) RSRZ outliers are listed below:

Mol	Chain	Res	Type	RSRZ
1	A	53	SER	10.5
1	A	52	GLY	8.6
1	A	628	ASN	5.8
1	A	54	GLU	5.8
1	A	9	ALA	5.8
1	A	51	ALA	5.2
1	A	266	ASP	4.6
1	A	314	GLY	4.5
1	A	229	SER	4.4
1	A	315	CYS	4.2
1	A	204	TYR	4.1
1	A	55	ALA	3.9
1	A	358	LEU	3.1
1	A	313	LEU	3.0
1	A	105	PHE	2.7
1	A	225	PRO	2.7
1	A	336	ARG	2.5
1	A	462	PRO	2.4
1	A	209	LEU	2.3
1	A	68	SER	2.3
1	A	267	ARG	2.3
1	A	318	LEU	2.3
1	A	56	GLU	2.3
1	A	414	GLY	2.2
1	A	265	GLY	2.1
1	A	339	ARG	2.1
1	A	224	GLN	2.1

*Continued on next page...*

*Continued from previous page...*

Mol	Chain	Res	Type	RSRZ
1	A	50	GLY	2.1
1	A	212	PRO	2.0
1	A	627	ALA	2.0
1	A	208	GLU	2.0

## 6.2 Non-standard residues in protein, DNA, RNA chains [i](#)

In the following table, the Atoms column lists the number of modelled atoms in the group and the number defined in the chemical component dictionary. LLDF column lists the quality of electron density of the group with respect to its neighbouring residues in protein, DNA or RNA chains. The B-factors column lists the minimum, median, 95<sup>th</sup> percentile and maximum values of B factors of atoms in the group. The column labelled 'Q < 0.9' lists the number of atoms with occupancy less than 0.9.

Mol	Type	Chain	Res	Atoms	RSCC	RSR	LLDF	B-factors(Å <sup>2</sup> )	Q<0.9
1	TPQ	A	382	14/15	0.94	0.10	-	7,14,33,46	0

## 6.3 Carbohydrates [i](#)

There are no carbohydrates in this entry.

## 6.4 Ligands [i](#)

In the following table, the Atoms column lists the number of modelled atoms in the group and the number defined in the chemical component dictionary. LLDF column lists the quality of electron density of the group with respect to its neighbouring residues in protein, DNA or RNA chains. The B-factors column lists the minimum, median, 95<sup>th</sup> percentile and maximum values of B factors of atoms in the group. The column labelled 'Q < 0.9' lists the number of atoms with occupancy less than 0.9.

Mol	Type	Chain	Res	Atoms	RSCC	RSR	LLDF	B-factors(Å <sup>2</sup> )	Q<0.9
6	GOL	A	1639	6/6	0.82	0.18	12.26	38,41,43,47	0
6	GOL	A	1640	6/6	0.87	0.15	11.14	28,40,42,50	0
6	GOL	A	1637	6/6	0.81	0.15	7.41	55,57,62,65	0
6	GOL	A	1636	6/6	0.86	0.19	6.10	29,35,41,43	0
4	R4A	A	1631[A]	53/53	0.86	0.27	4.99	22,32,40,47	75
4	R4A	A	1631[B]	53/53	0.86	0.27	4.99	30,42,44,47	75
5	SO4	A	1632	5/5	0.92	0.16	2.70	47,49,52,53	0
6	GOL	A	1635	6/6	0.91	0.16	2.67	23,26,28,28	0
6	GOL	A	1638	6/6	0.92	0.14	1.28	27,48,58,58	0

*Continued on next page...*

*Continued from previous page...*

Mol	Type	Chain	Res	Atoms	RSCC	RSR	LLDF	B-factors( $\text{\AA}^2$ )	Q<0.9
3	NA	A	1630	1/1	0.98	0.07	-0.27	21,21,21,21	0
2	CU	A	1629	1/1	0.99	0.03	-2.40	19,19,19,19	0
5	SO4	A	1633	5/5	0.74	0.37	-	107,107,108,110	0
5	SO4	A	1634	5/5	0.69	0.45	-	74,80,84,86	0

## 6.5 Other polymers [i](#)

There are no such residues in this entry.